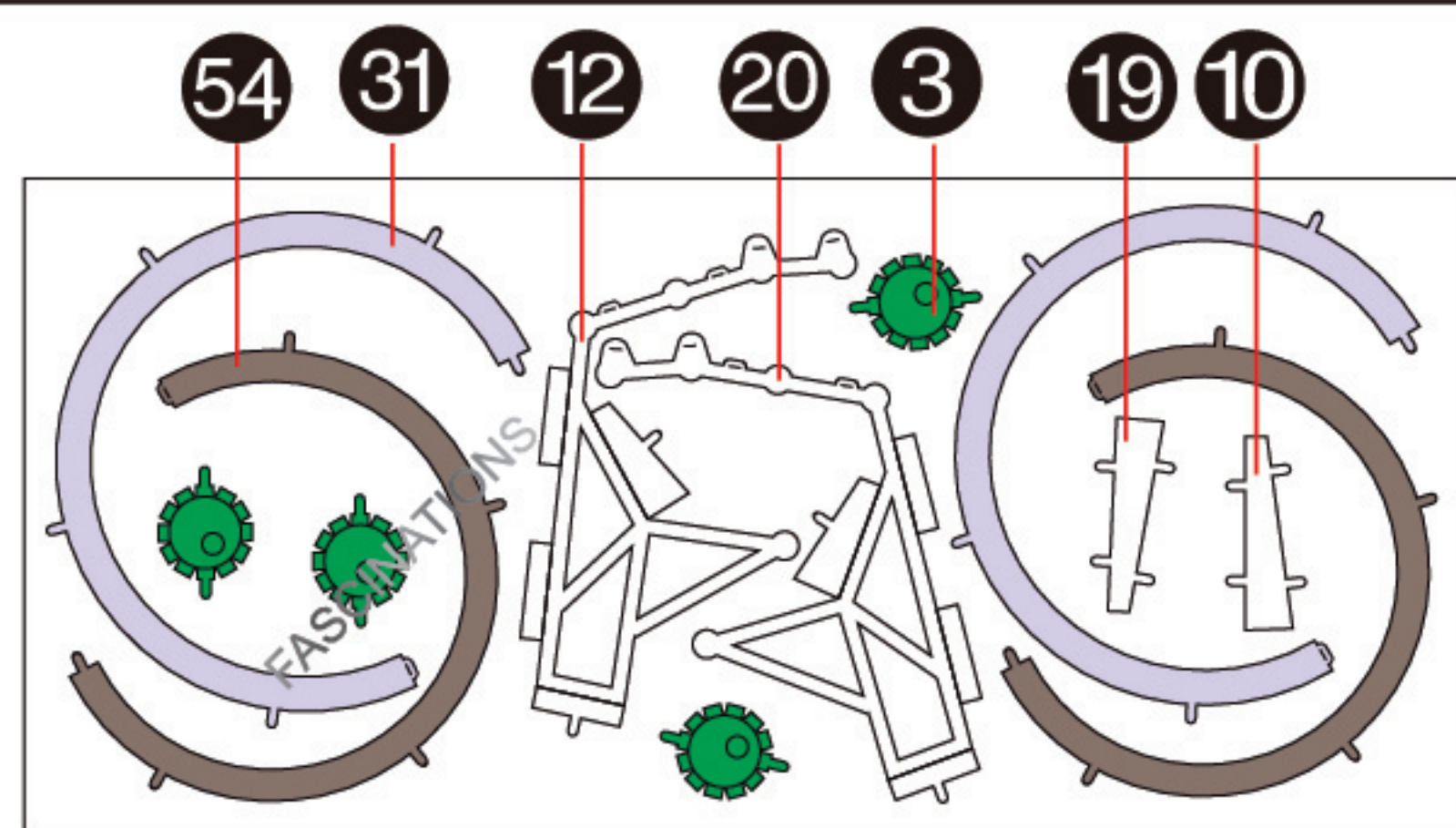
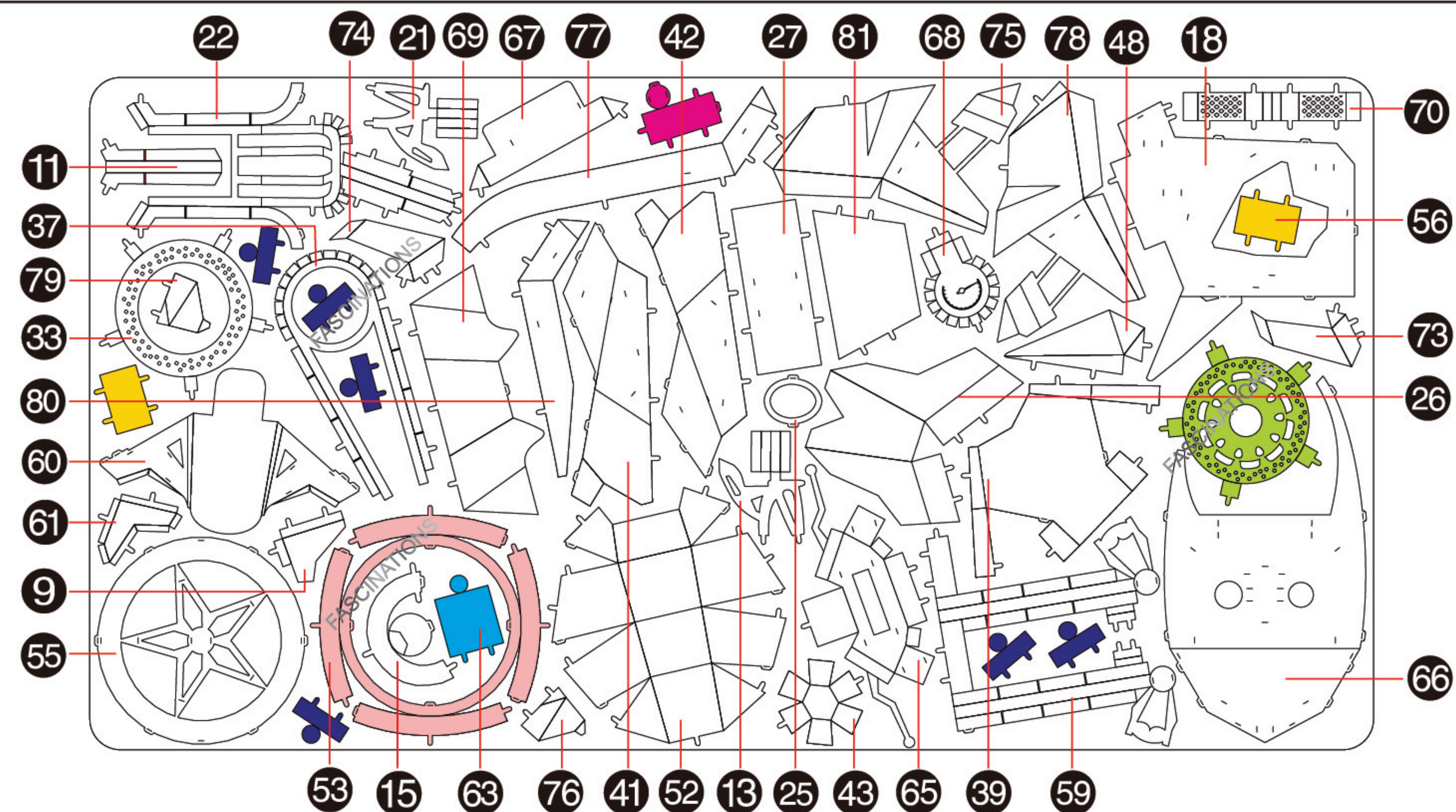
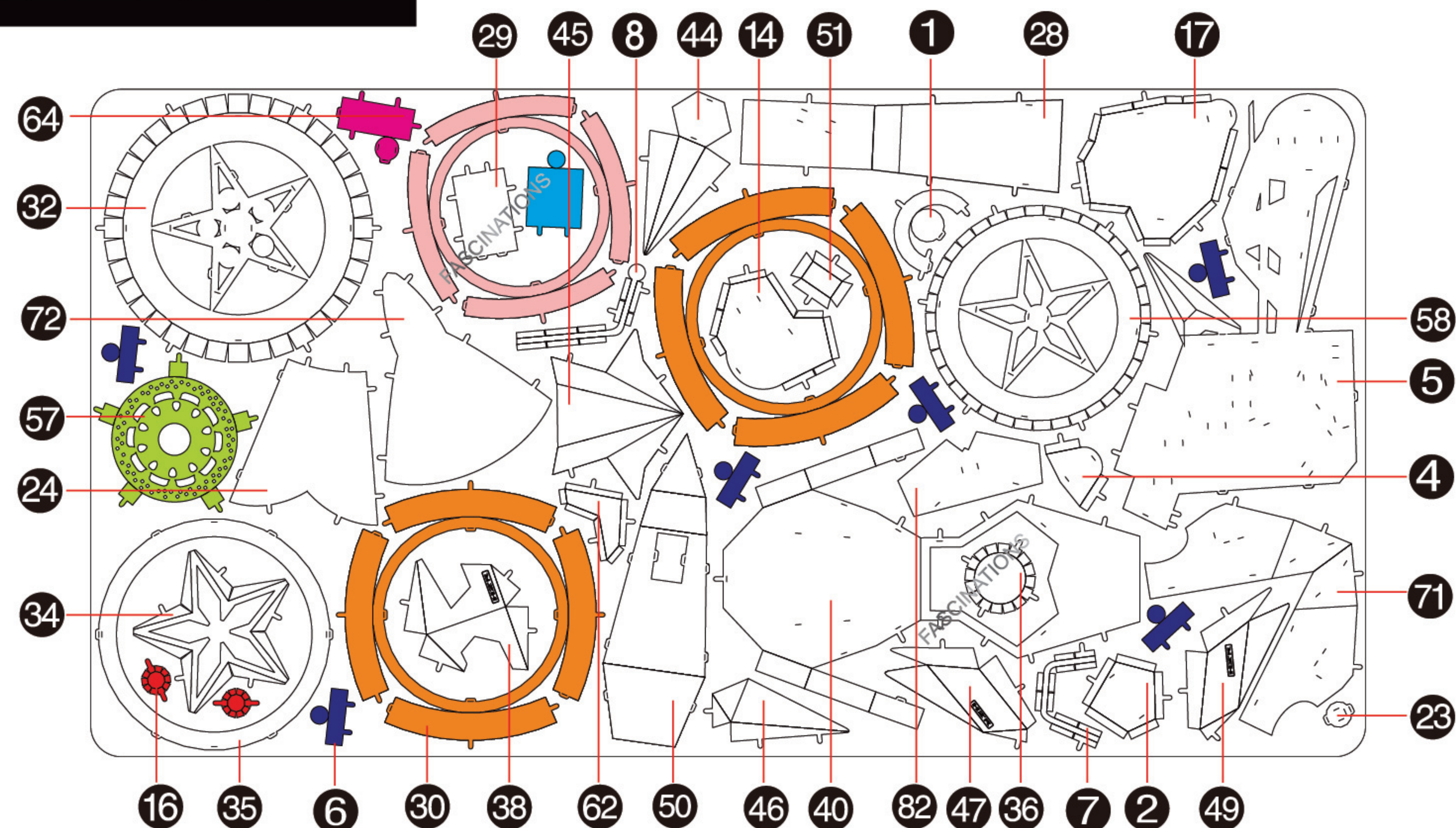


METAL SHEETS



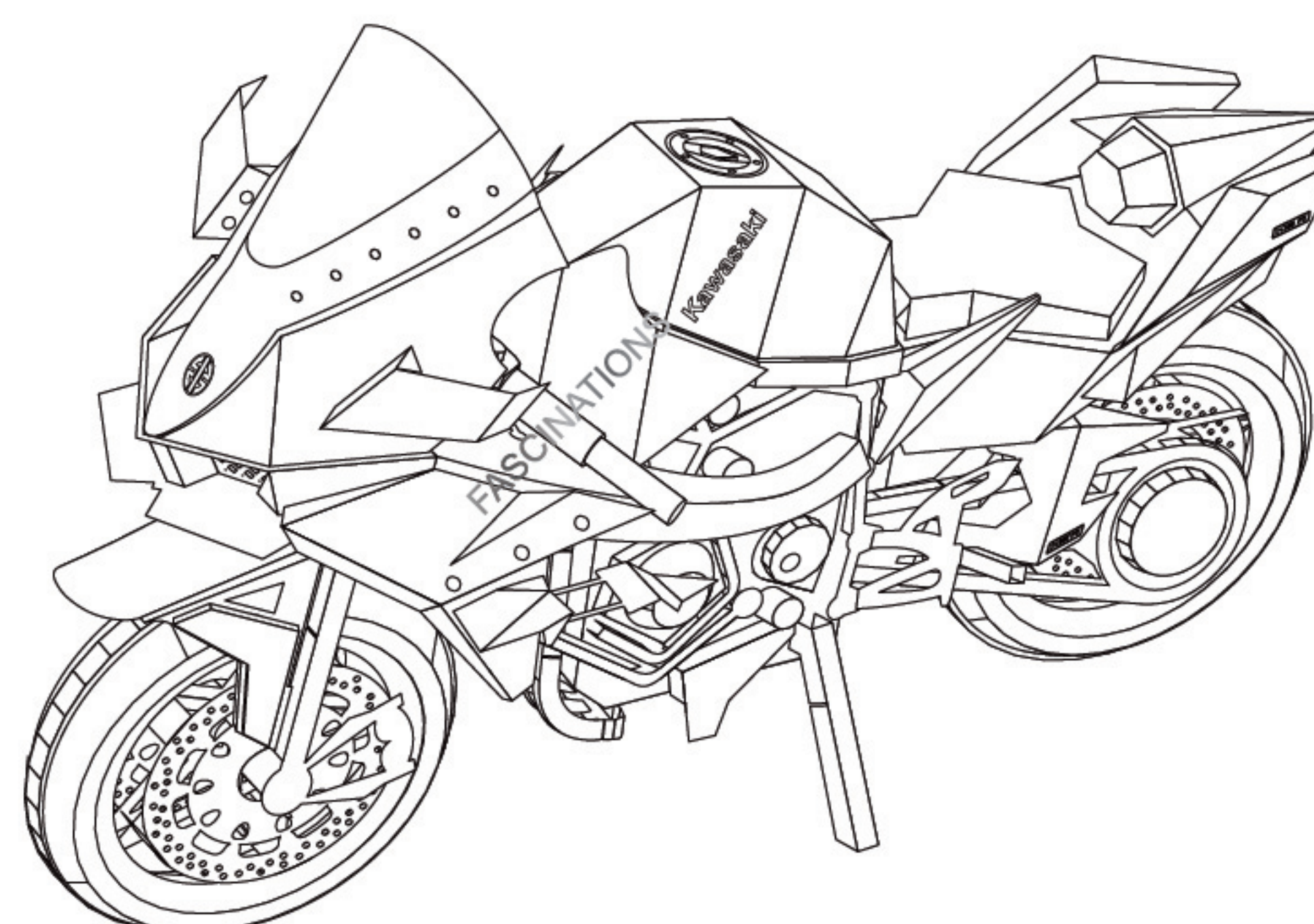
In order to avoid possible injury from sharp edges, please carefully discard the metal sheets after parts have been removed.



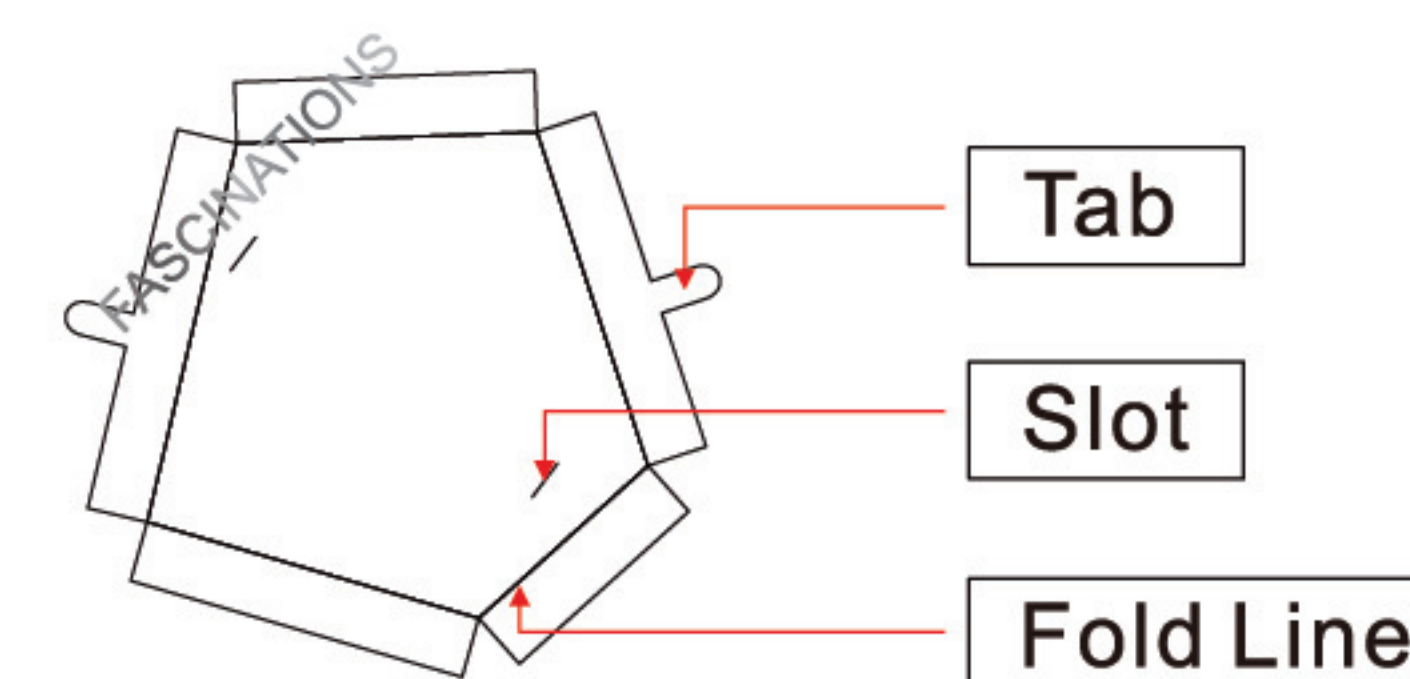
Go to www.metalearth.com/360/icx021 to see the zoomable PDF version of this instruction sheet

ICX021

Kawasaki Ninja H2R



TO CREATE THE BEST CONNECTIONS



Legends:

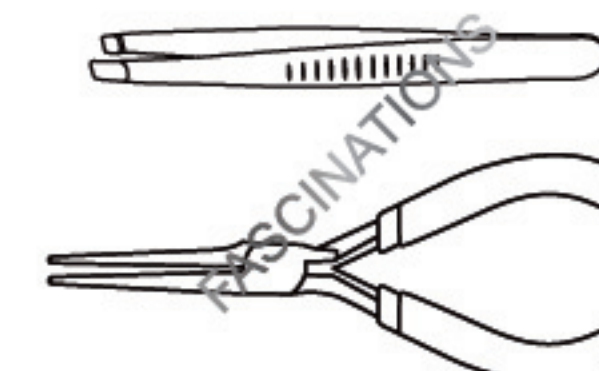
- Engraved side
- Non-engraved side
- Attention point
- Insert tab and bend 90 degrees
- Insert tab and twist 90 degrees

Recommended tools:

-Wire cutters: helpful for taking parts from the metal sheets.



-Tweezers or needle nose pliers: helpful for folding parts, bending and twisting tabs.

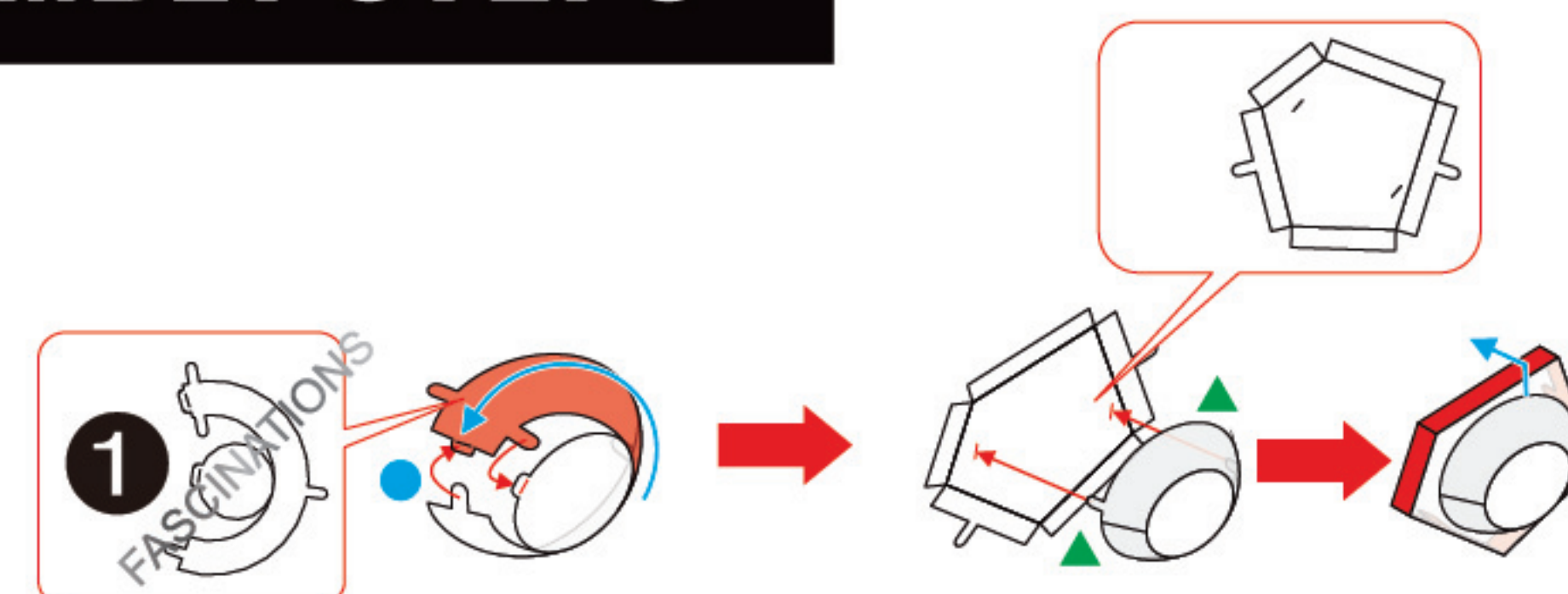


Assembly tip:

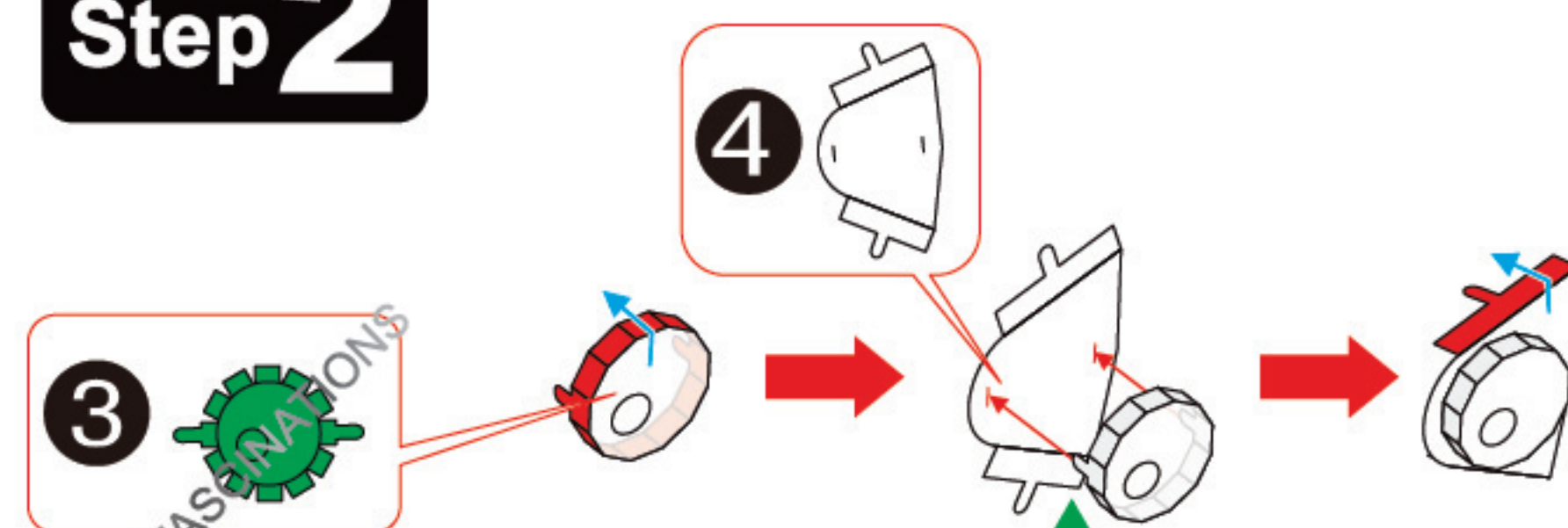
If needed, slightly twist tabs to hold parts together then untwist and bend them down for a nice finish

ASSEMBLY STEPS

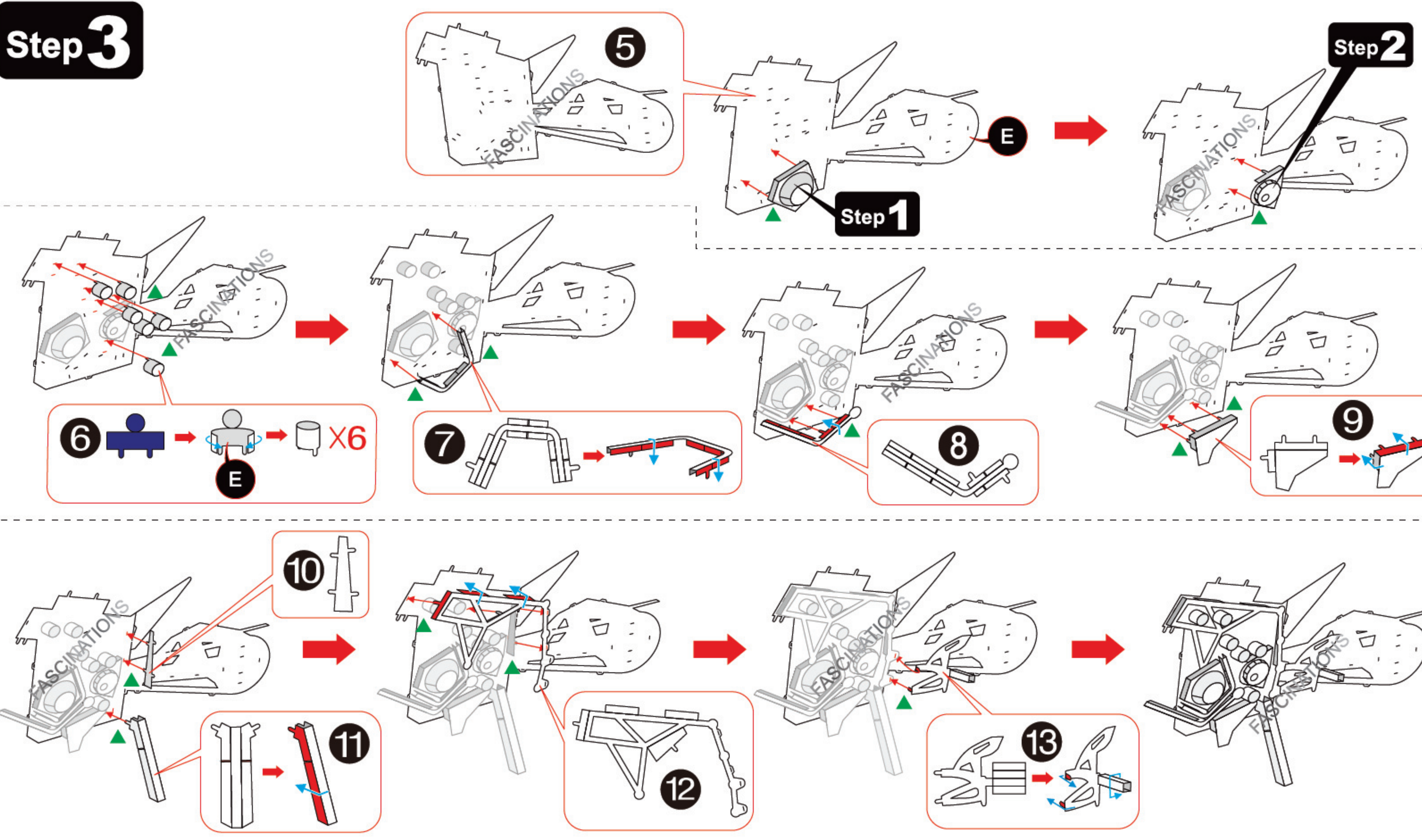
Step 1

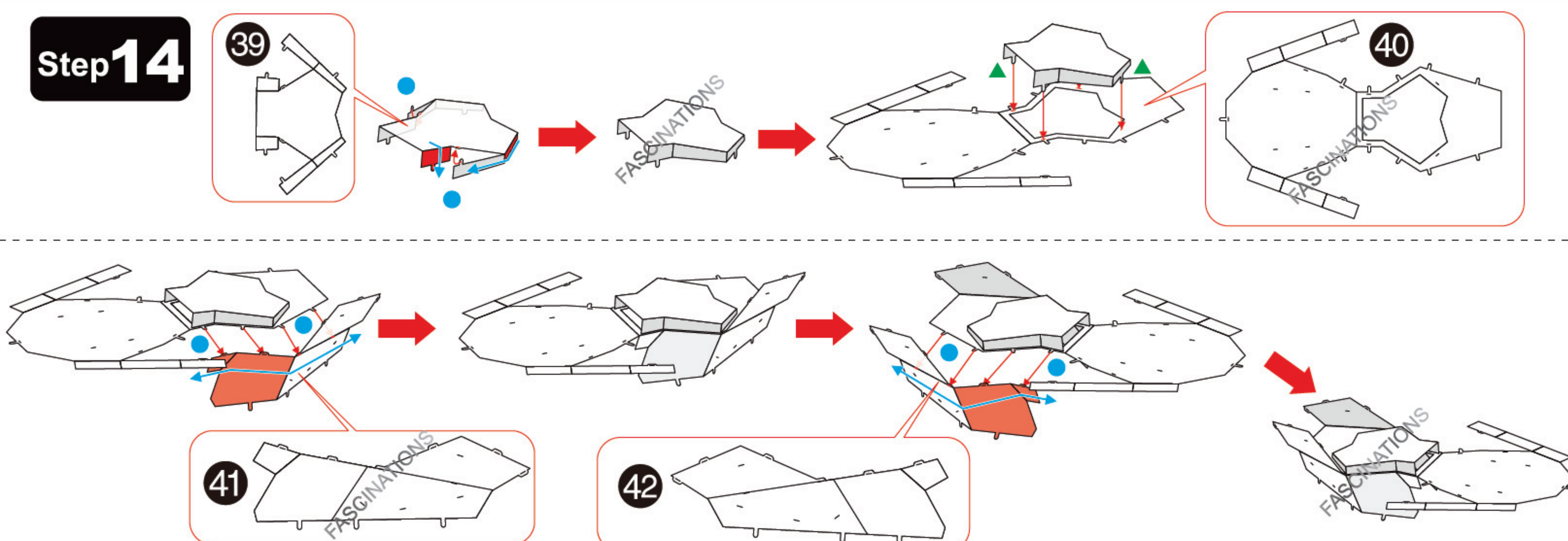
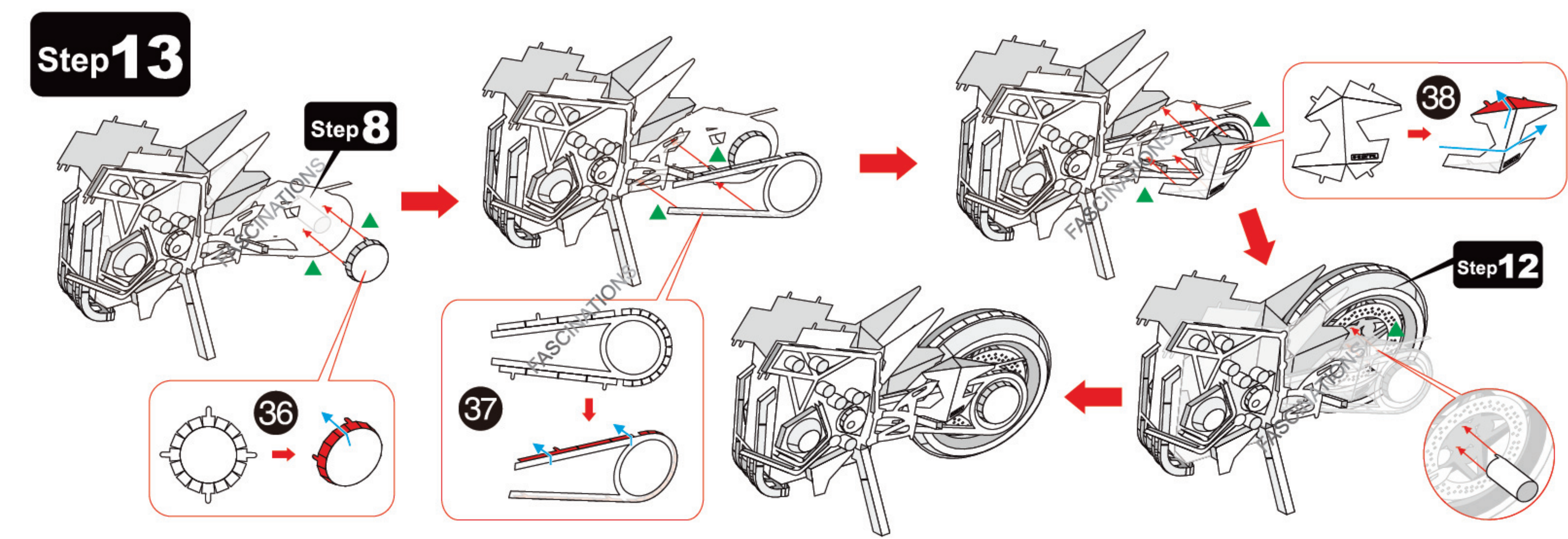
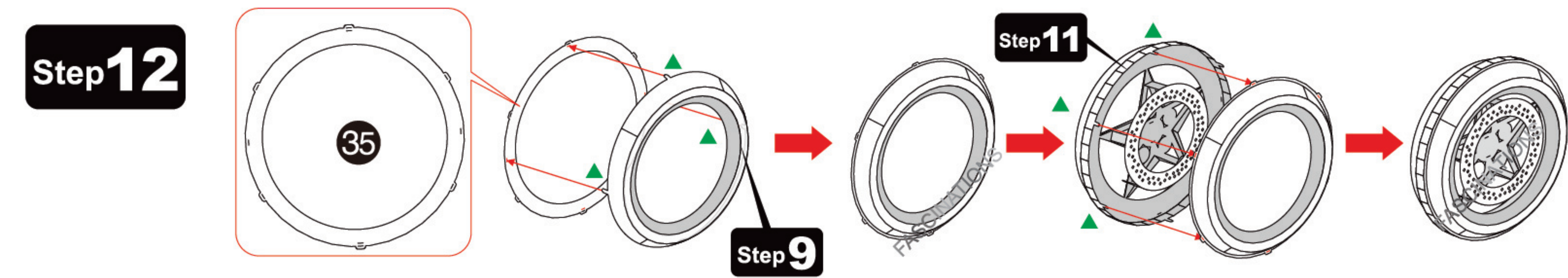
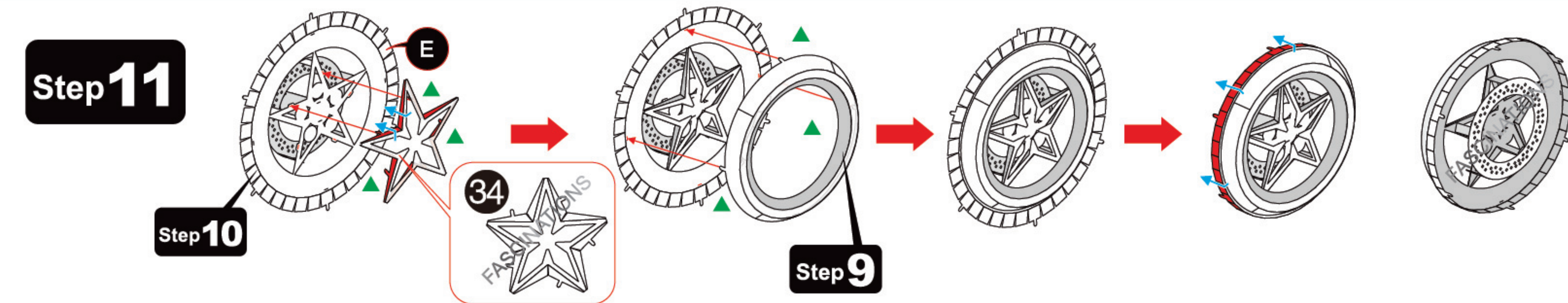
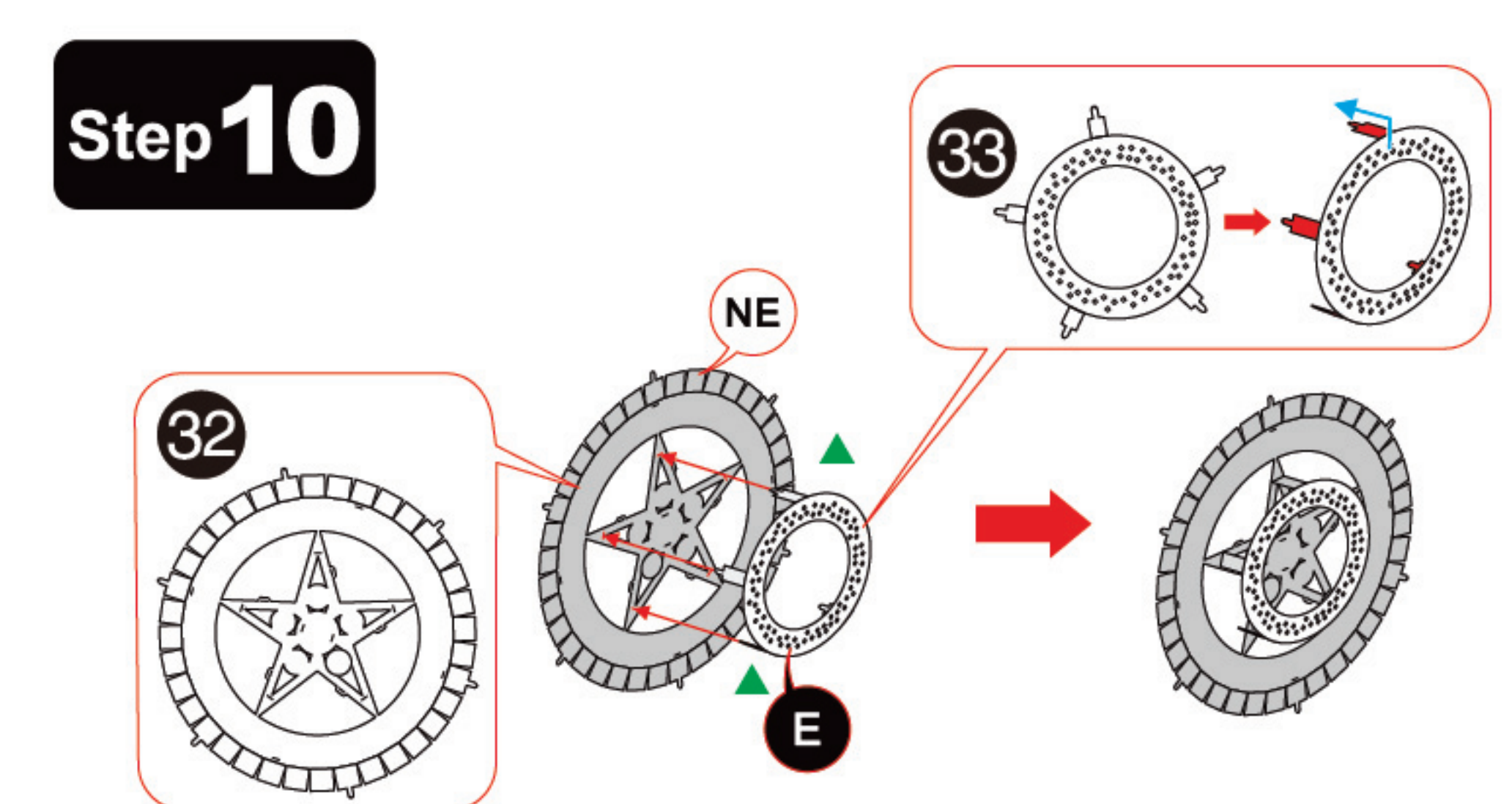
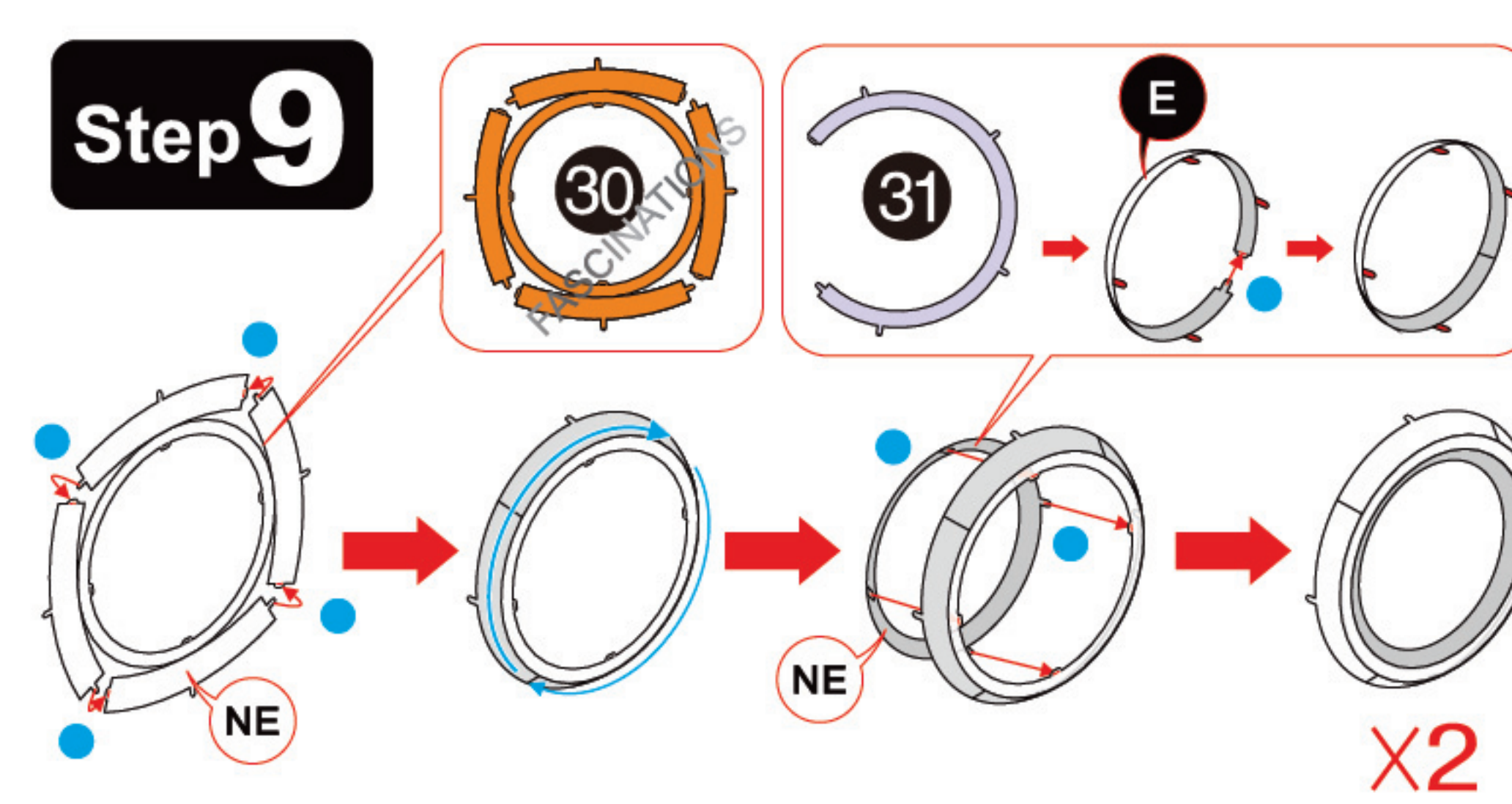
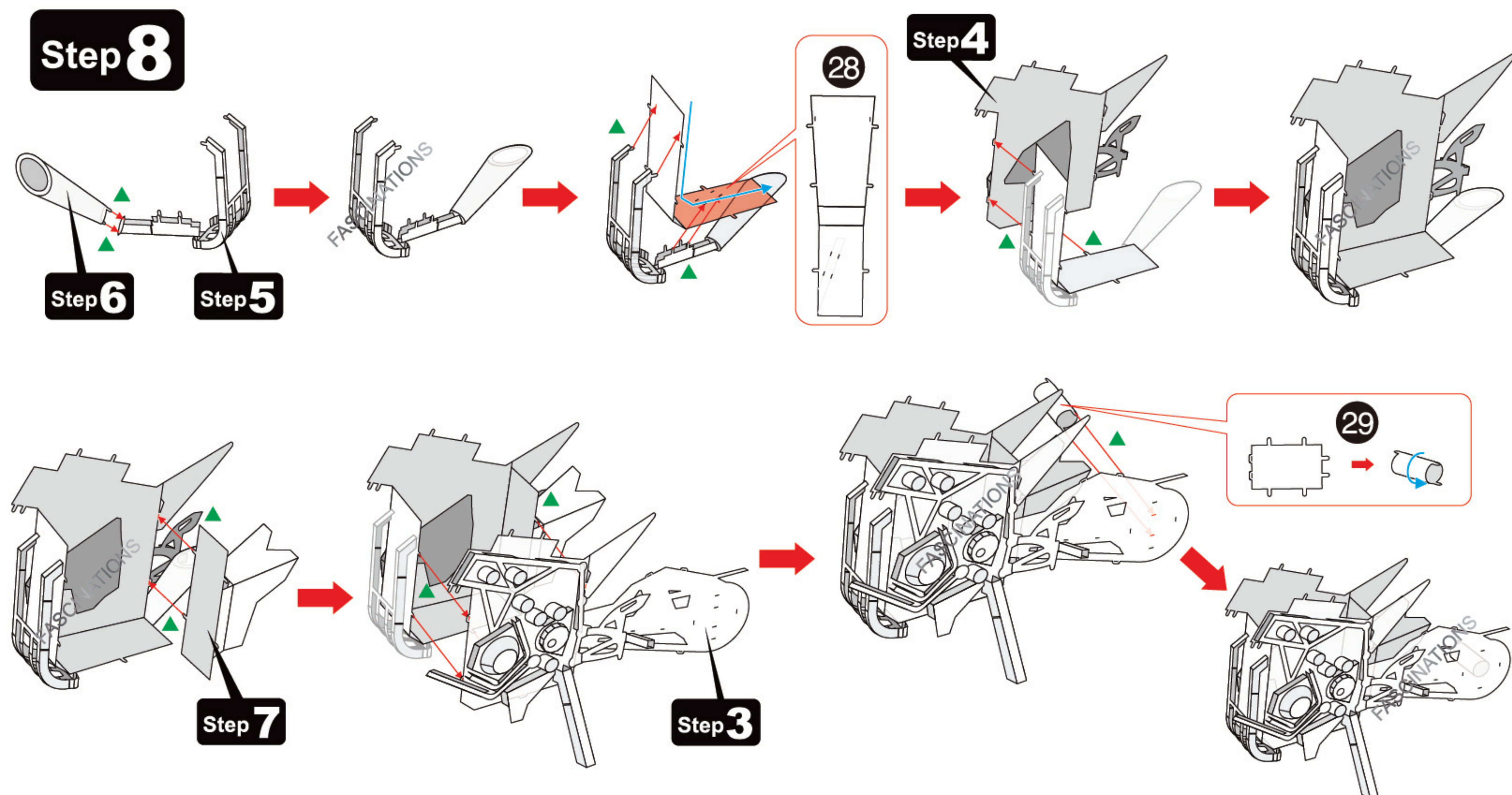
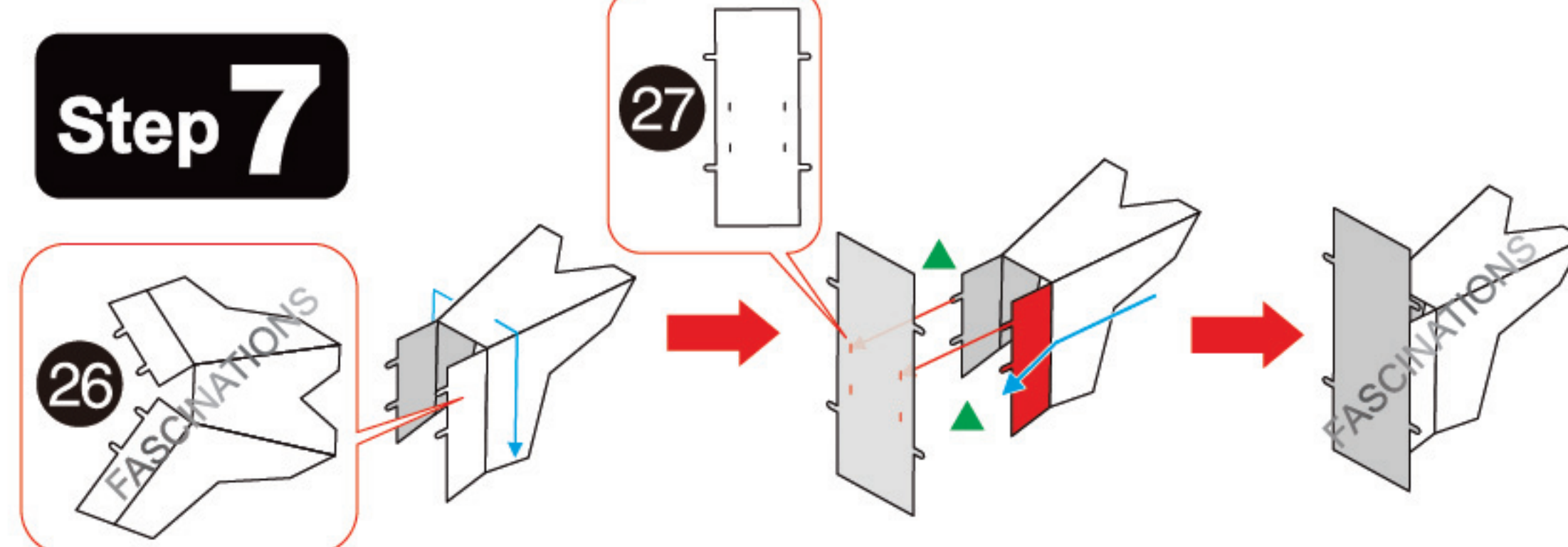
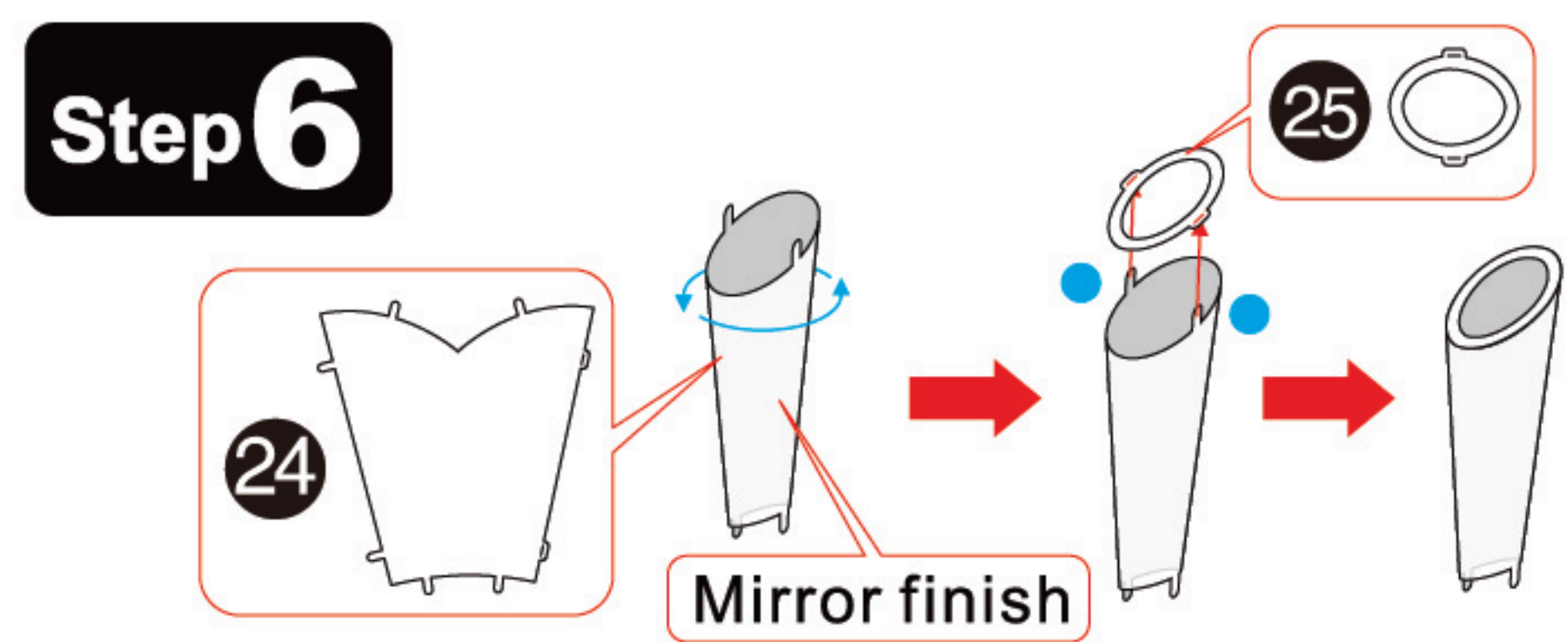
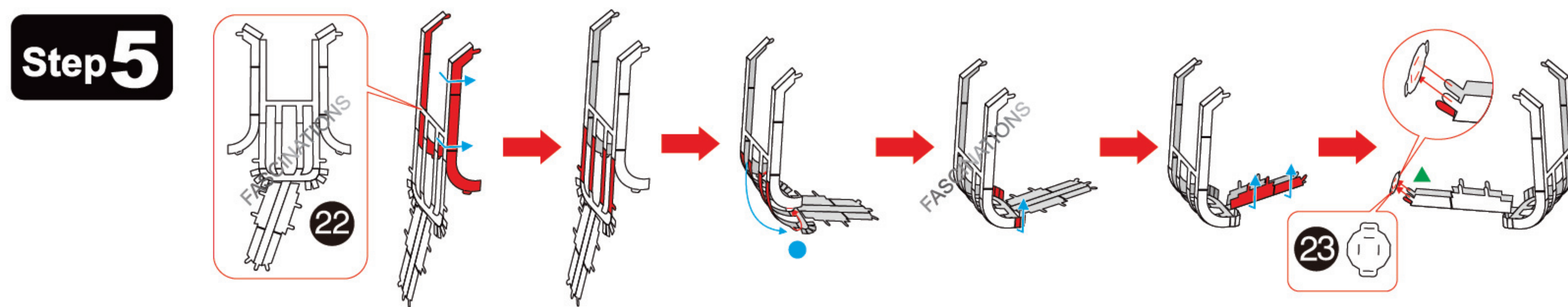
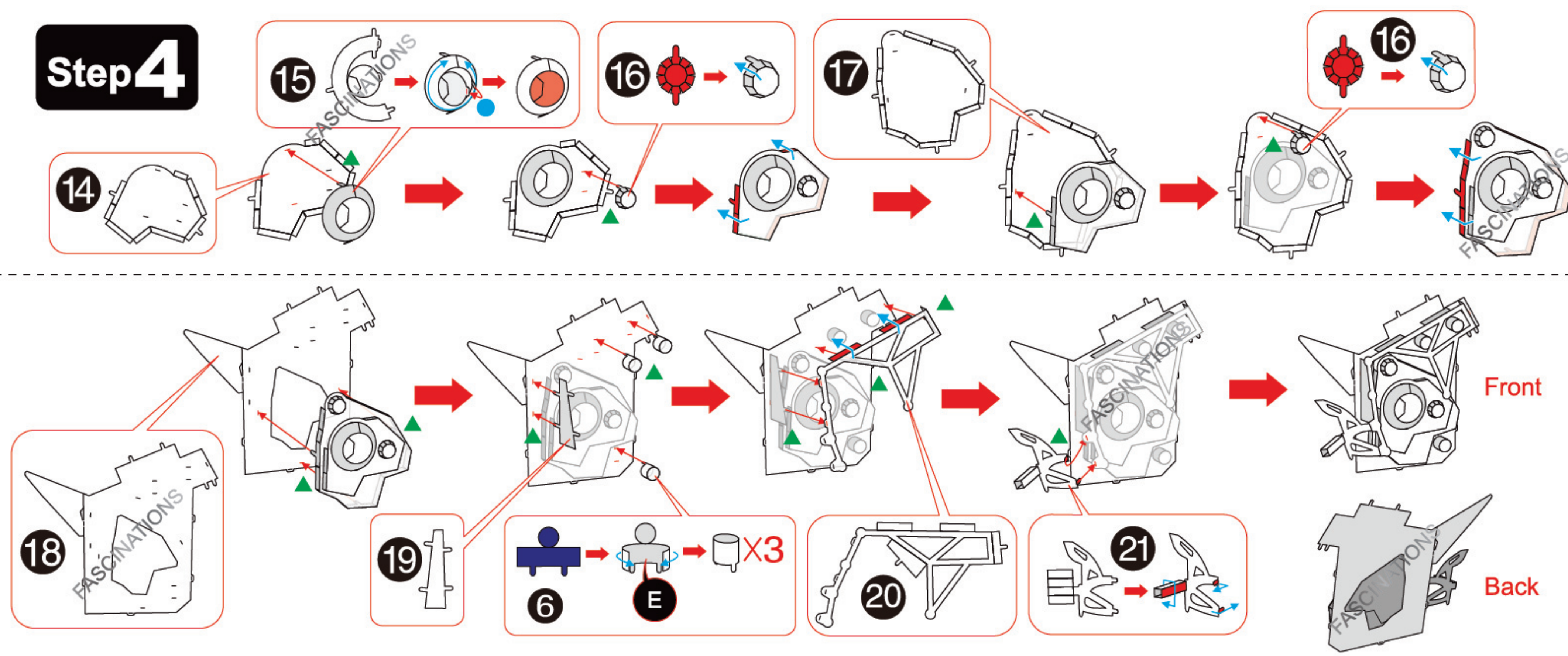


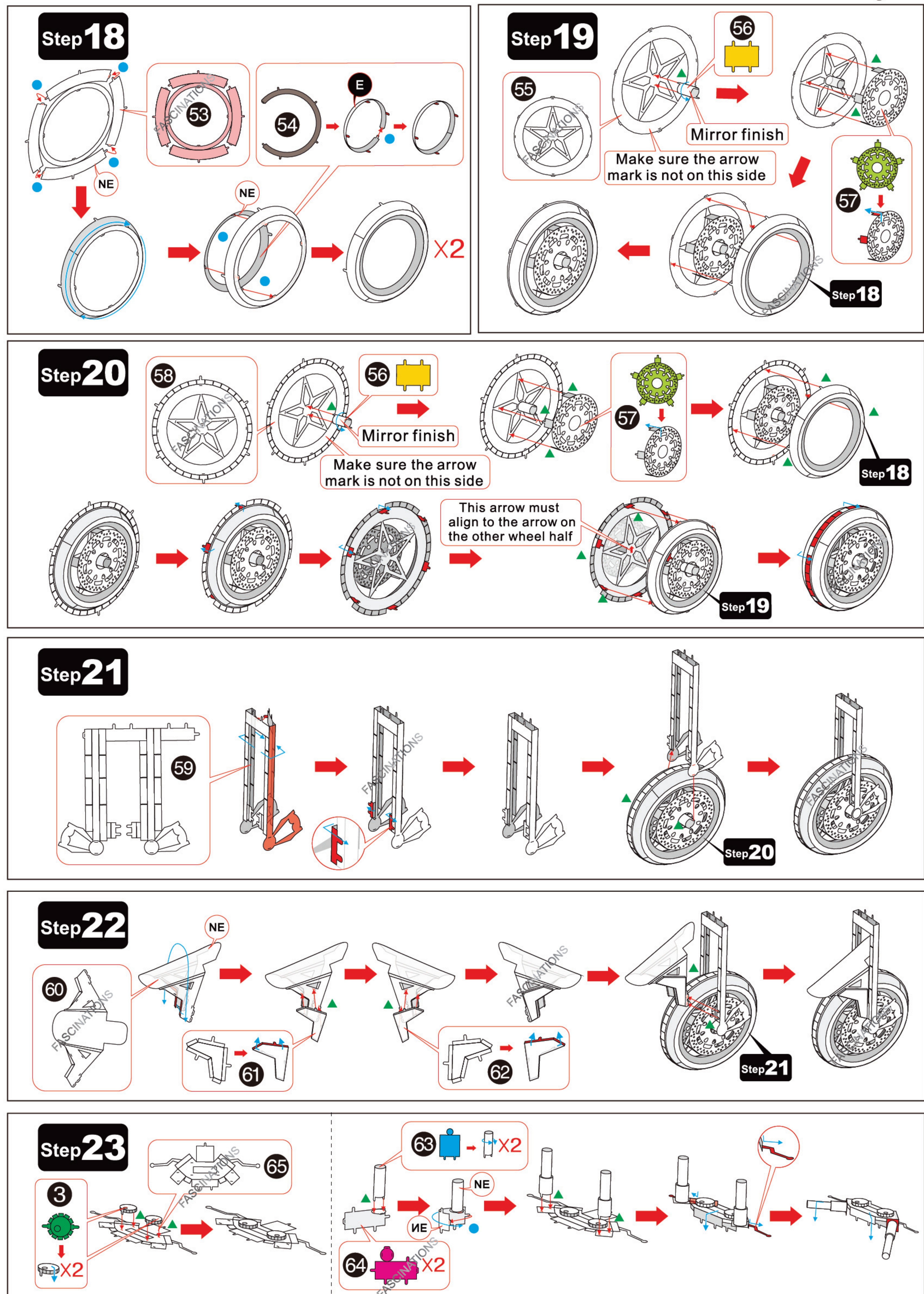
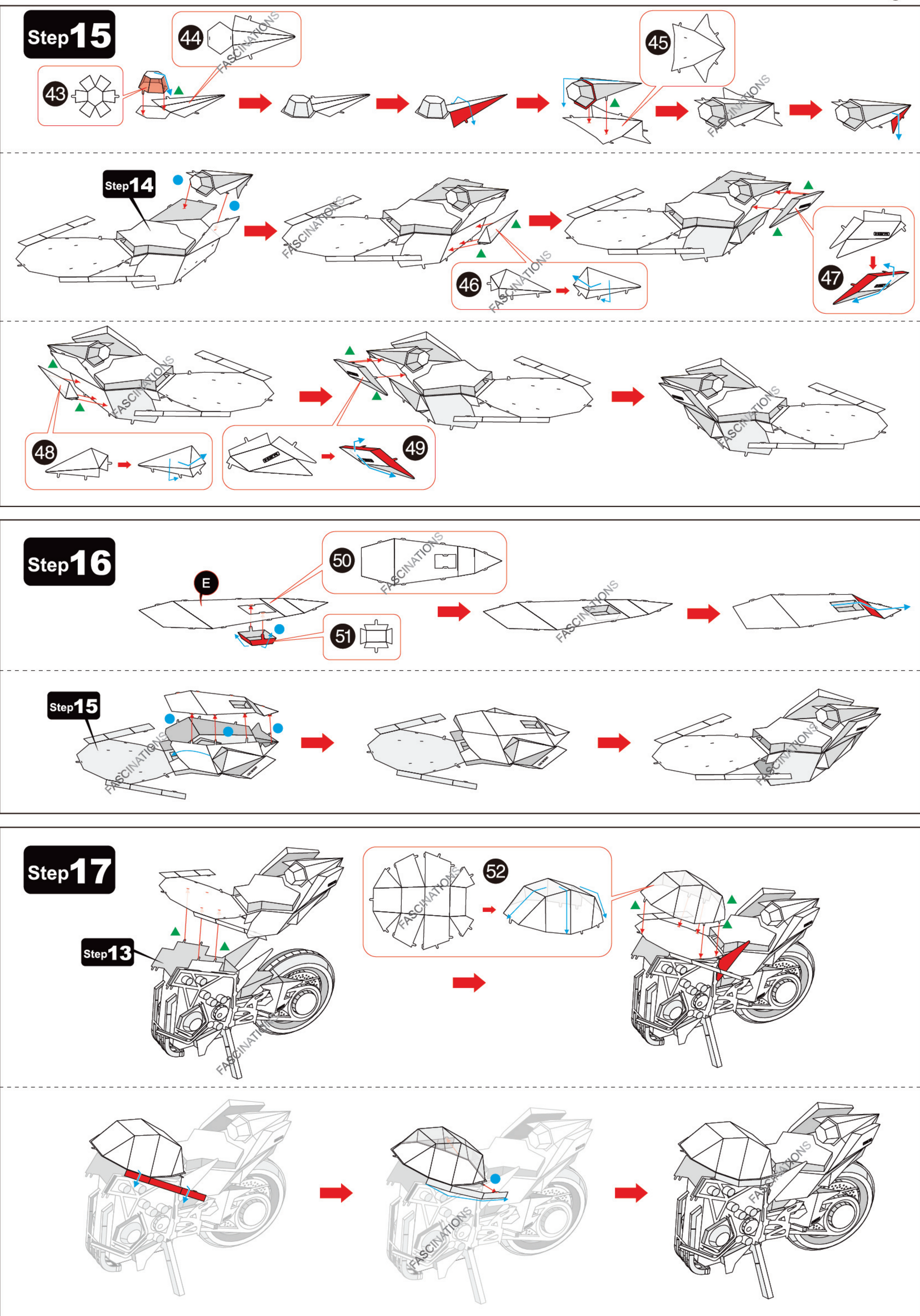
Step 2



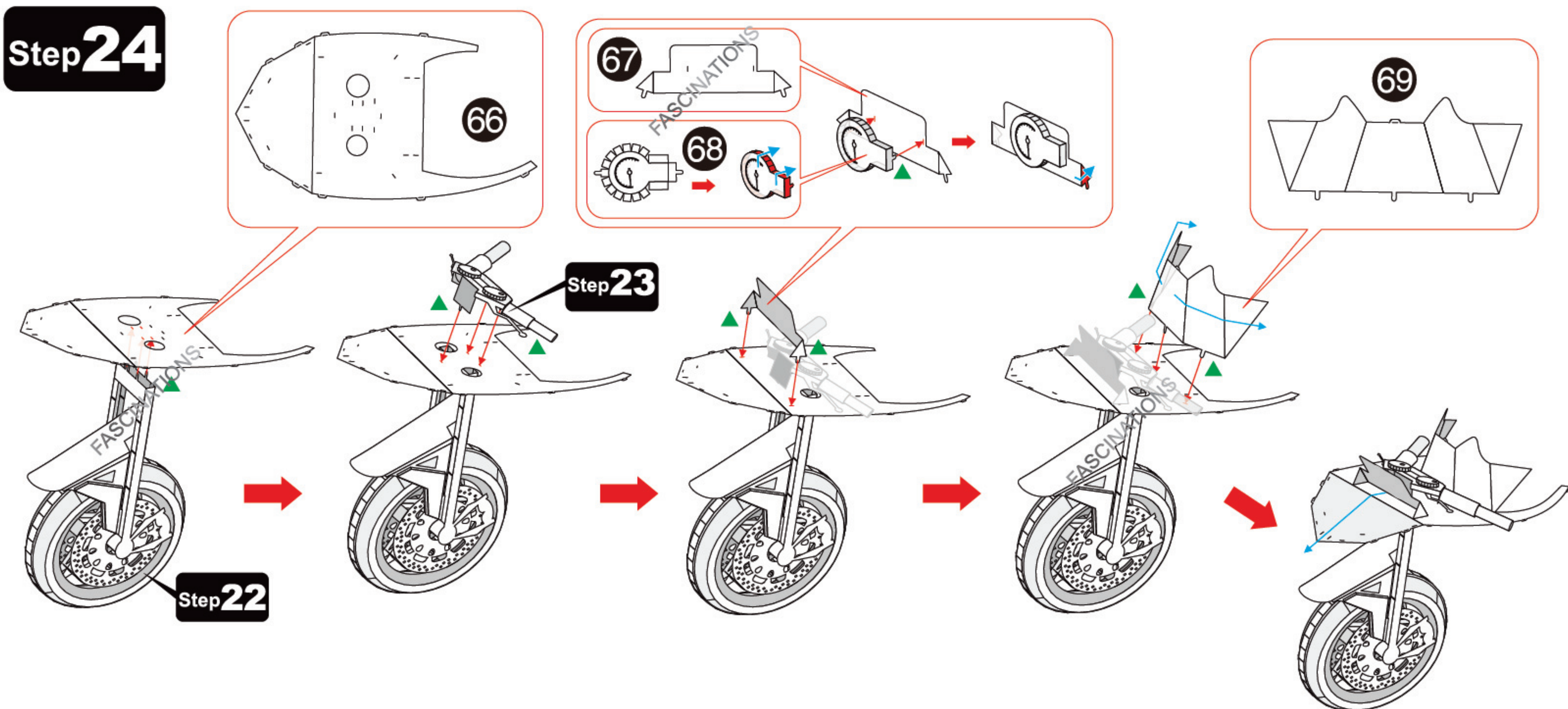
Step 3



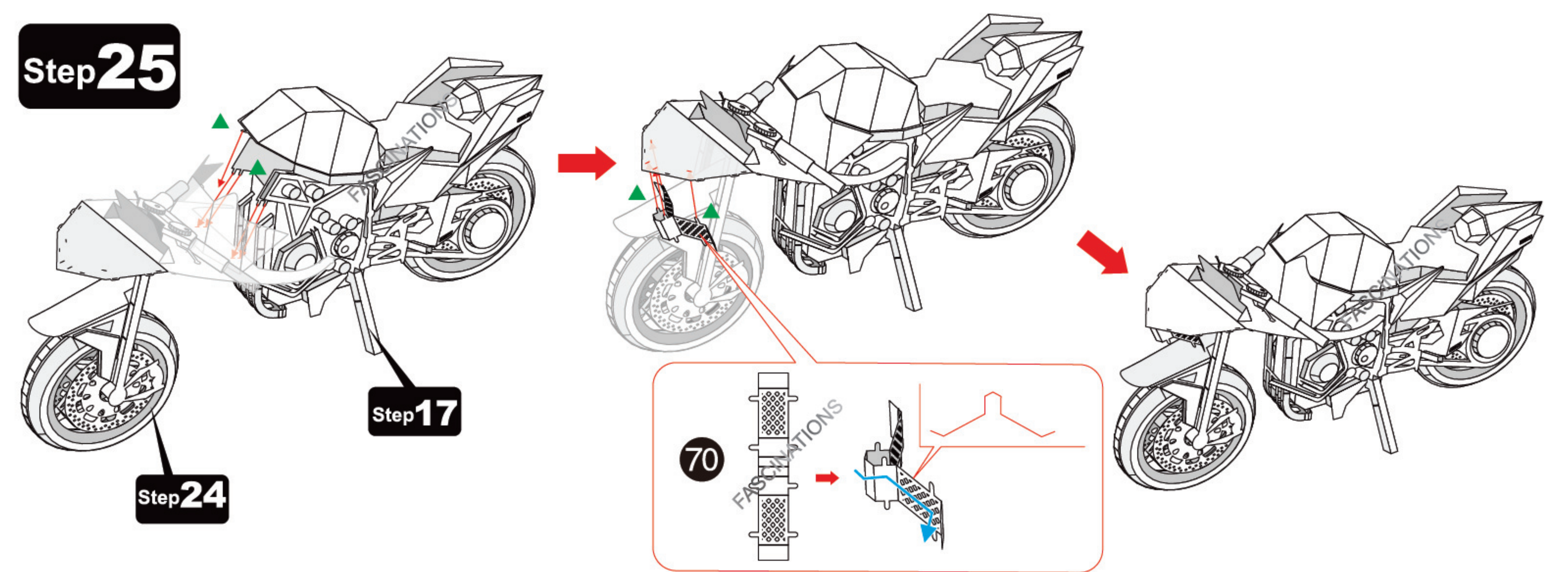




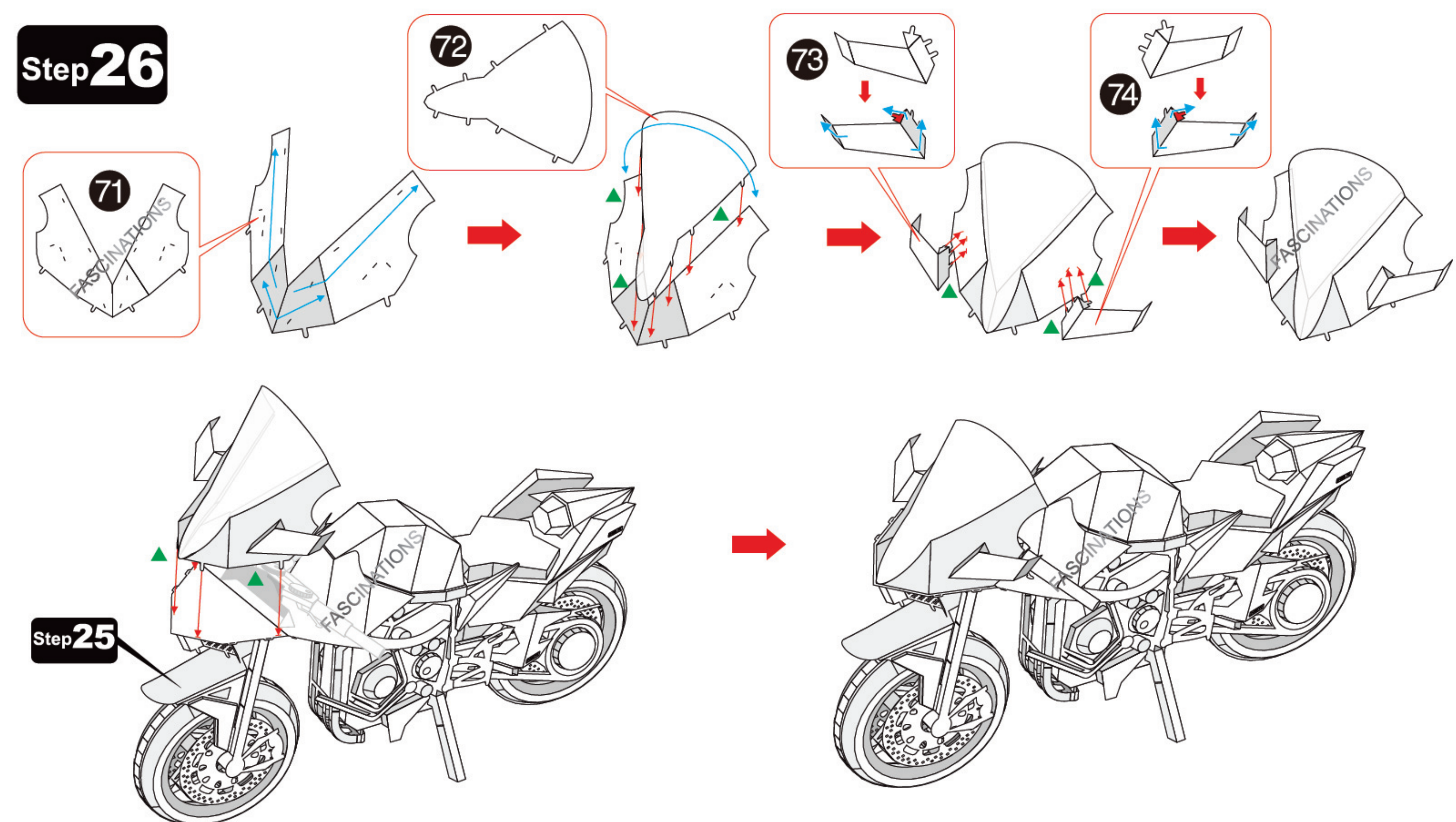
Step24



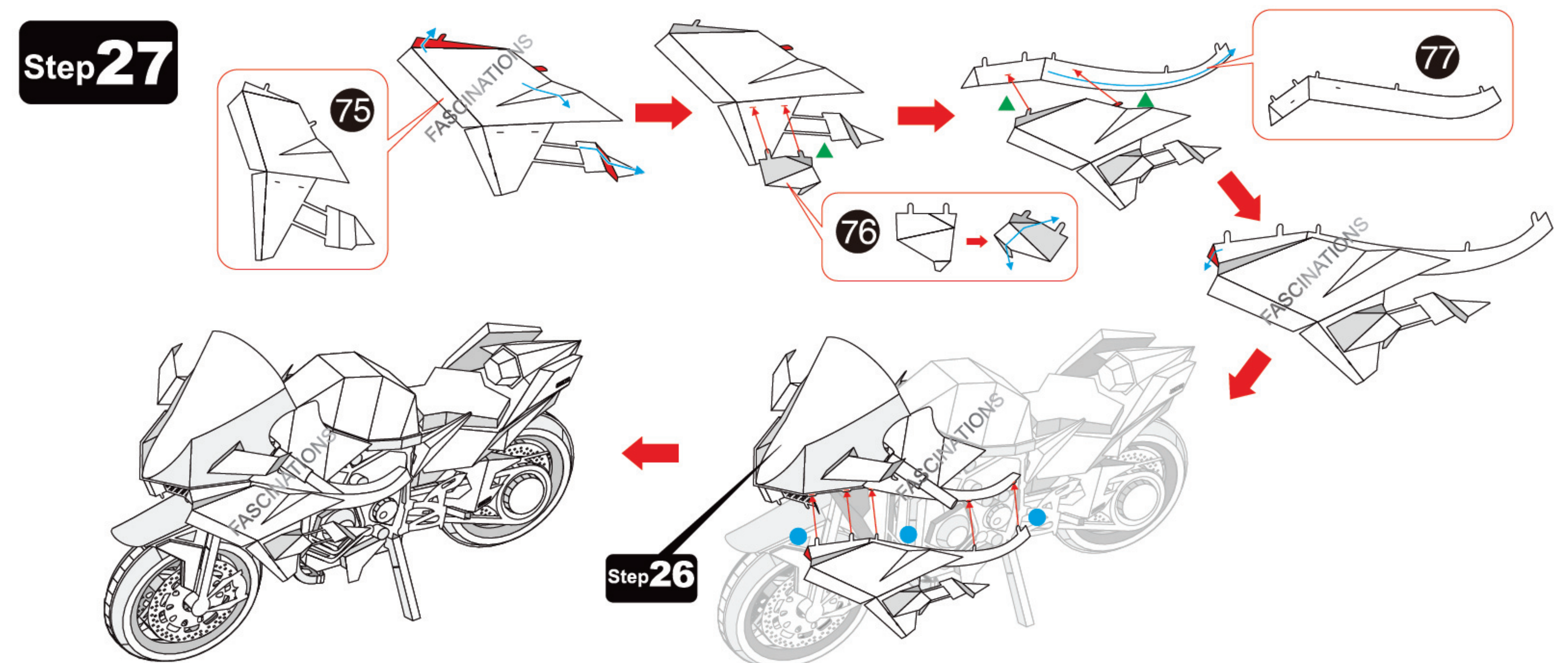
Step25



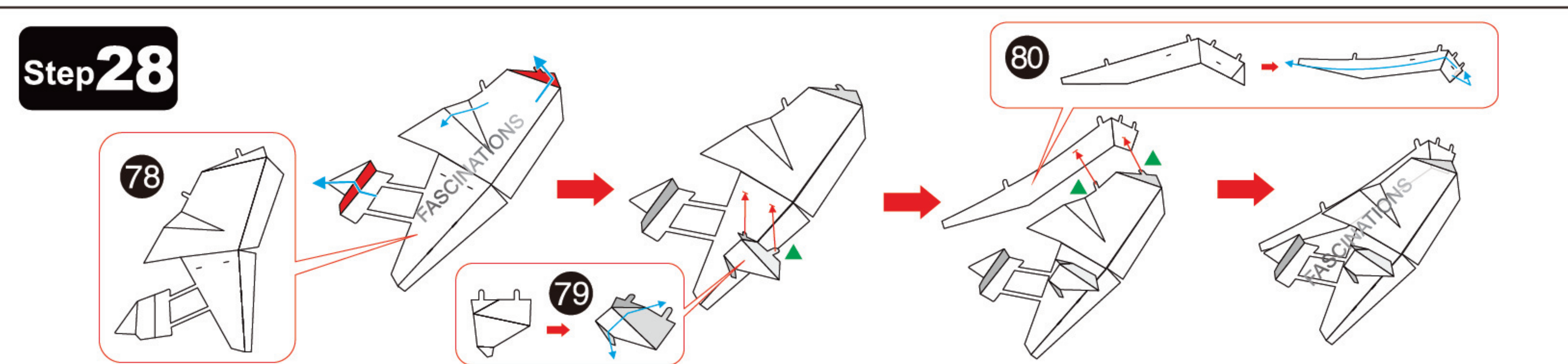
Step26



Step27



Step28



Step29

