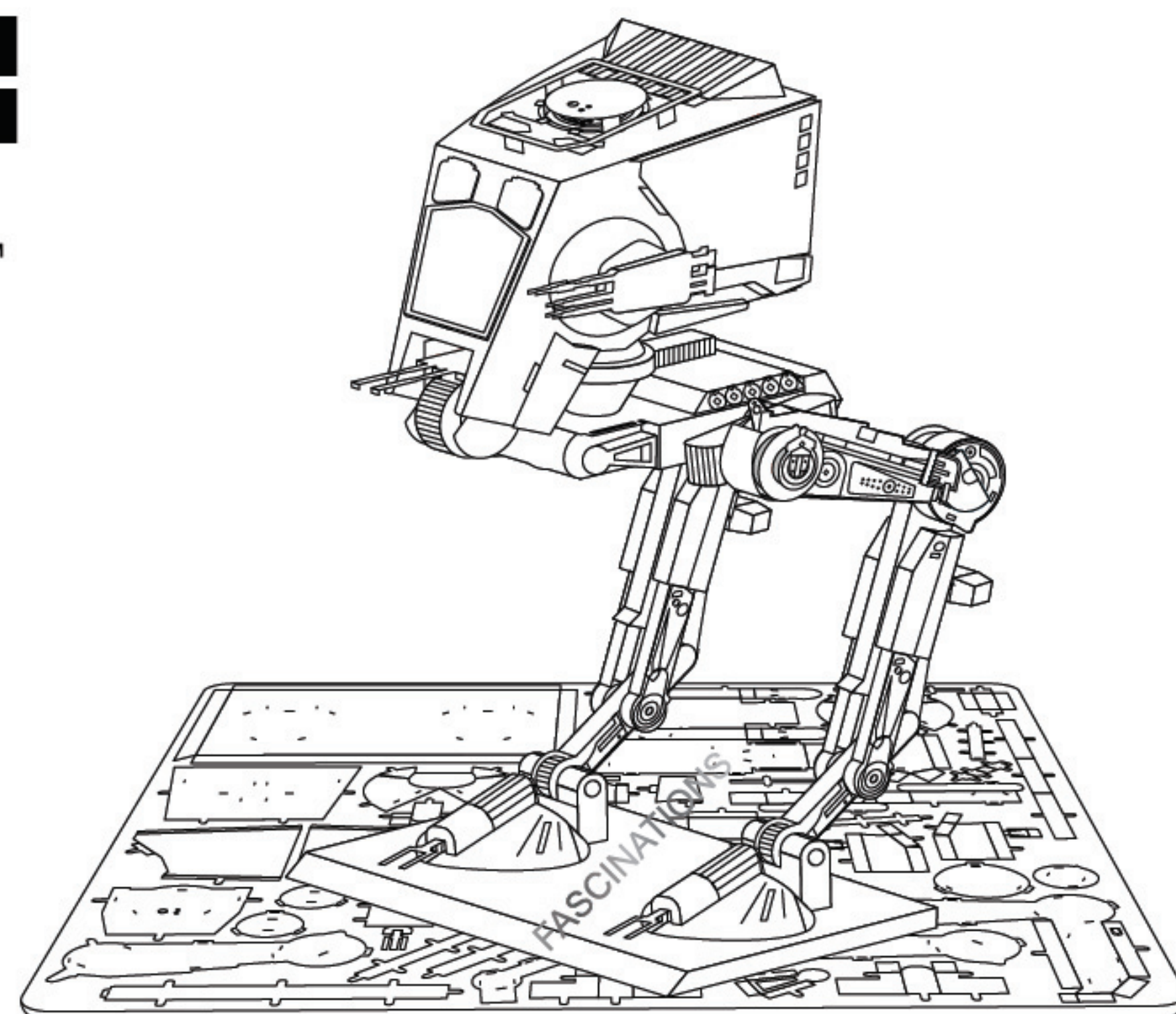




www.starwars.com
© &™ Lucasfilm Ltd.



AT-ST™

Item No. MMS261



It is highly recommended that you visit
www.metal-earth.com/360/mms261
to see the completed model before assembling your own

Metal
Earth®

3D METAL MODEL KITS

Legends:

- E** Engraved side
- NE** Non-engraved side
- Attention point
- Insert tab and bend 90 degrees
- Insert tab and twist 90 degrees

Assembly tip:

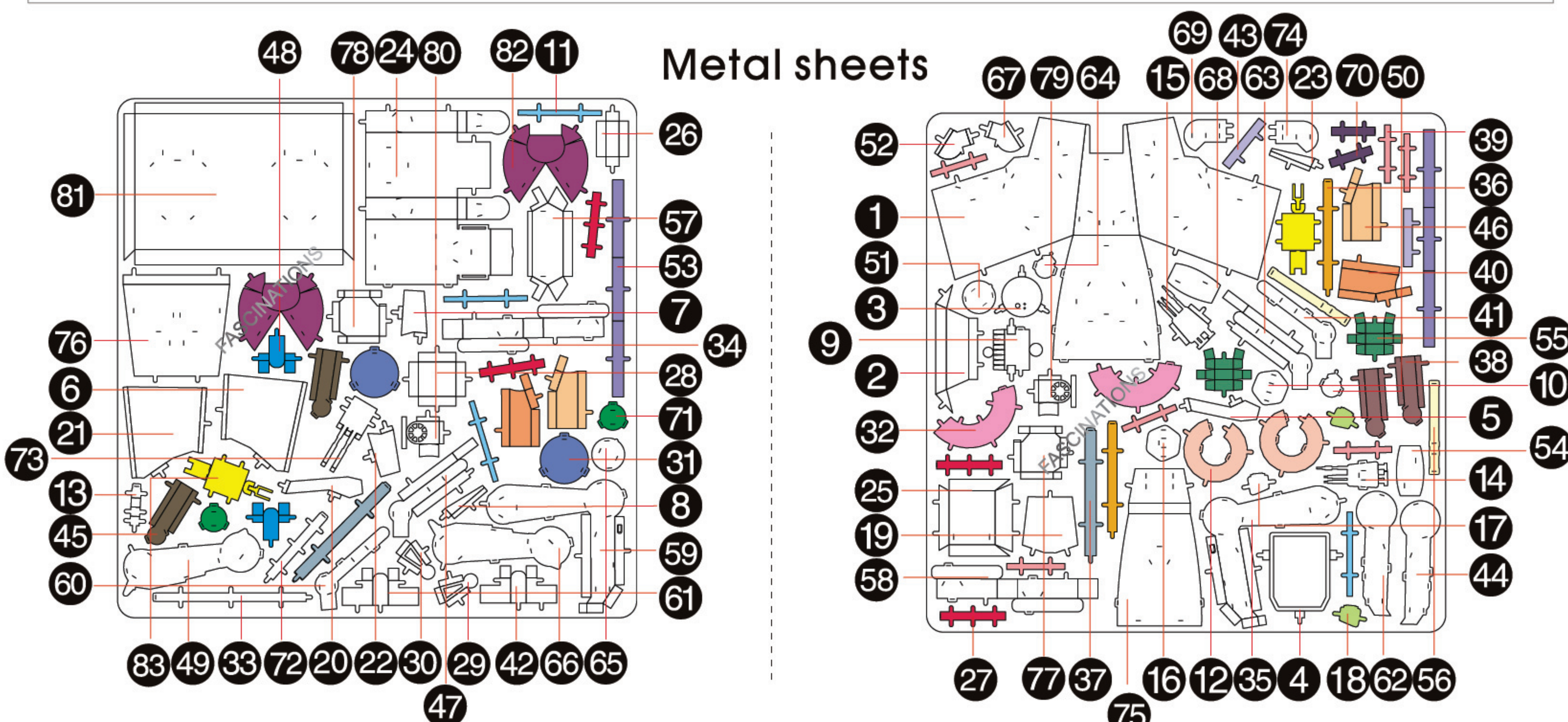
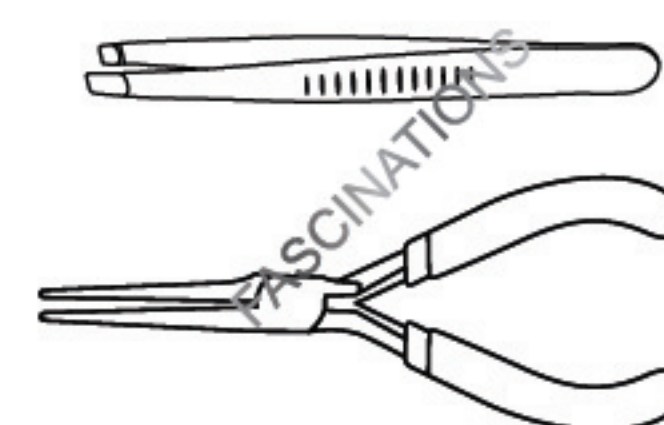
If needed, slightly twist tabs to hold parts together then untwist and bend them down for a nice finish

Recommended tools:

-Wire cutters: helpful for taking parts from the metal sheets.

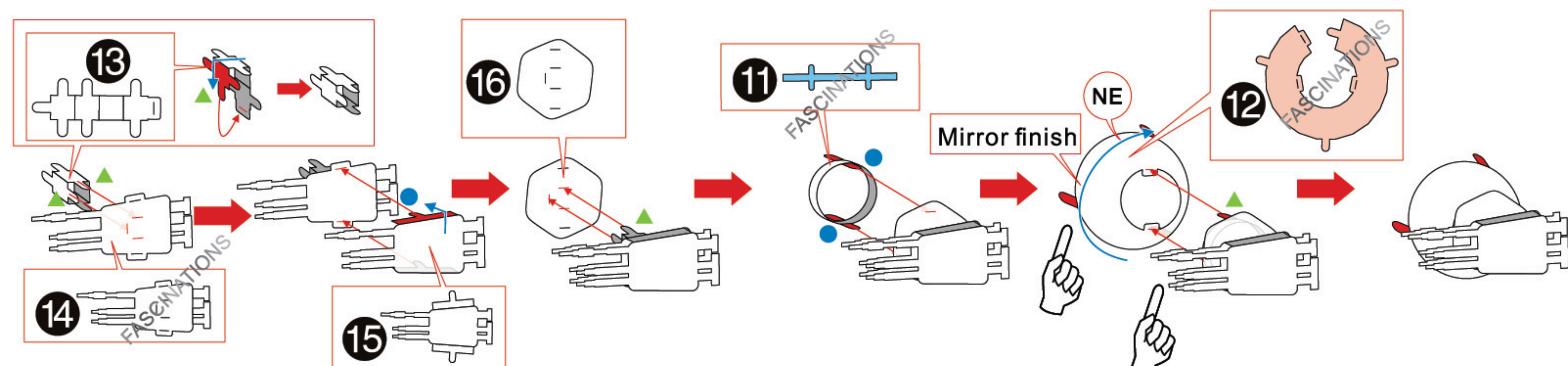
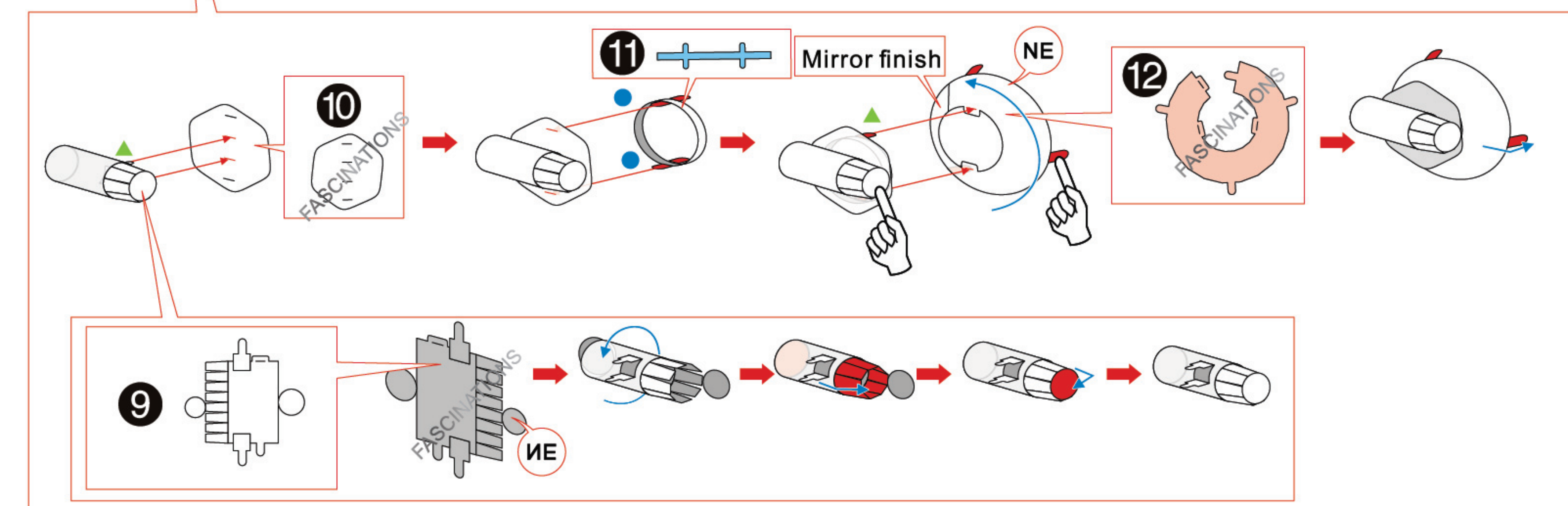
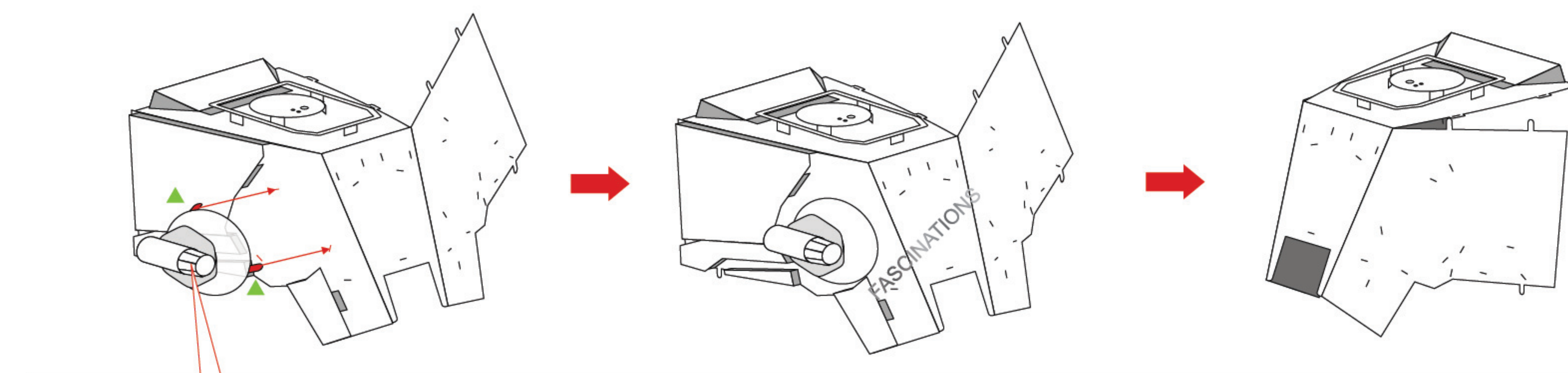
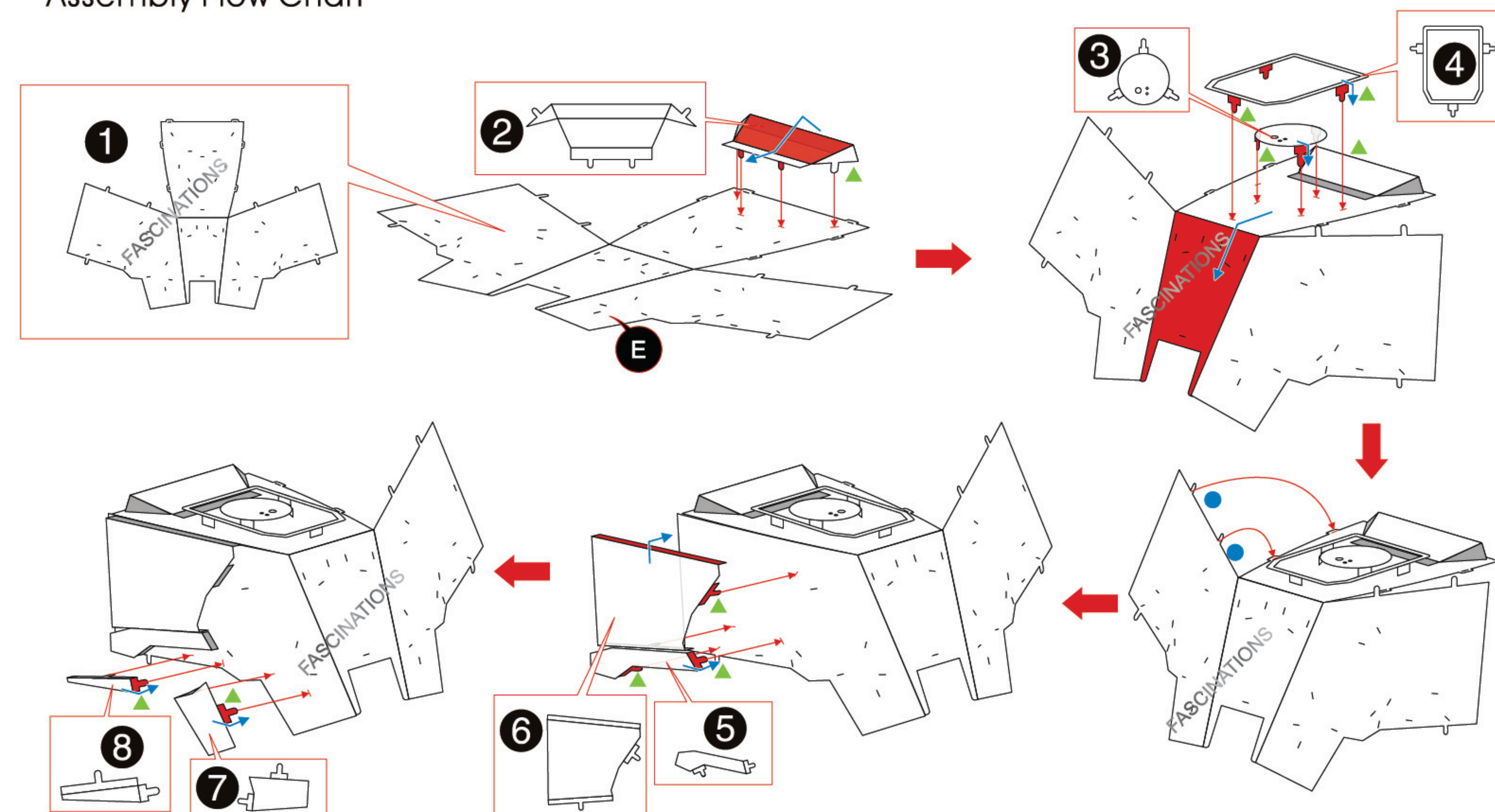


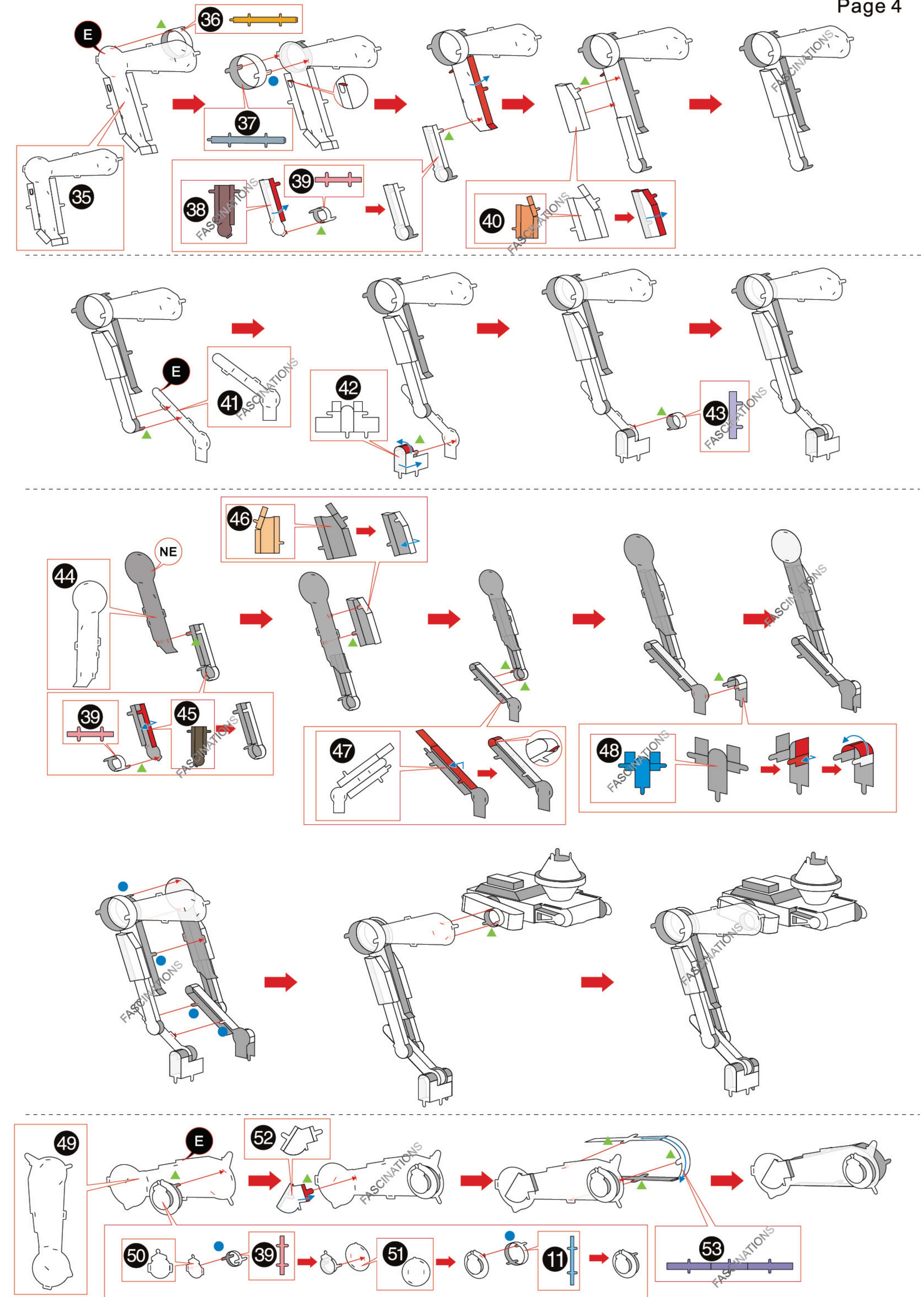
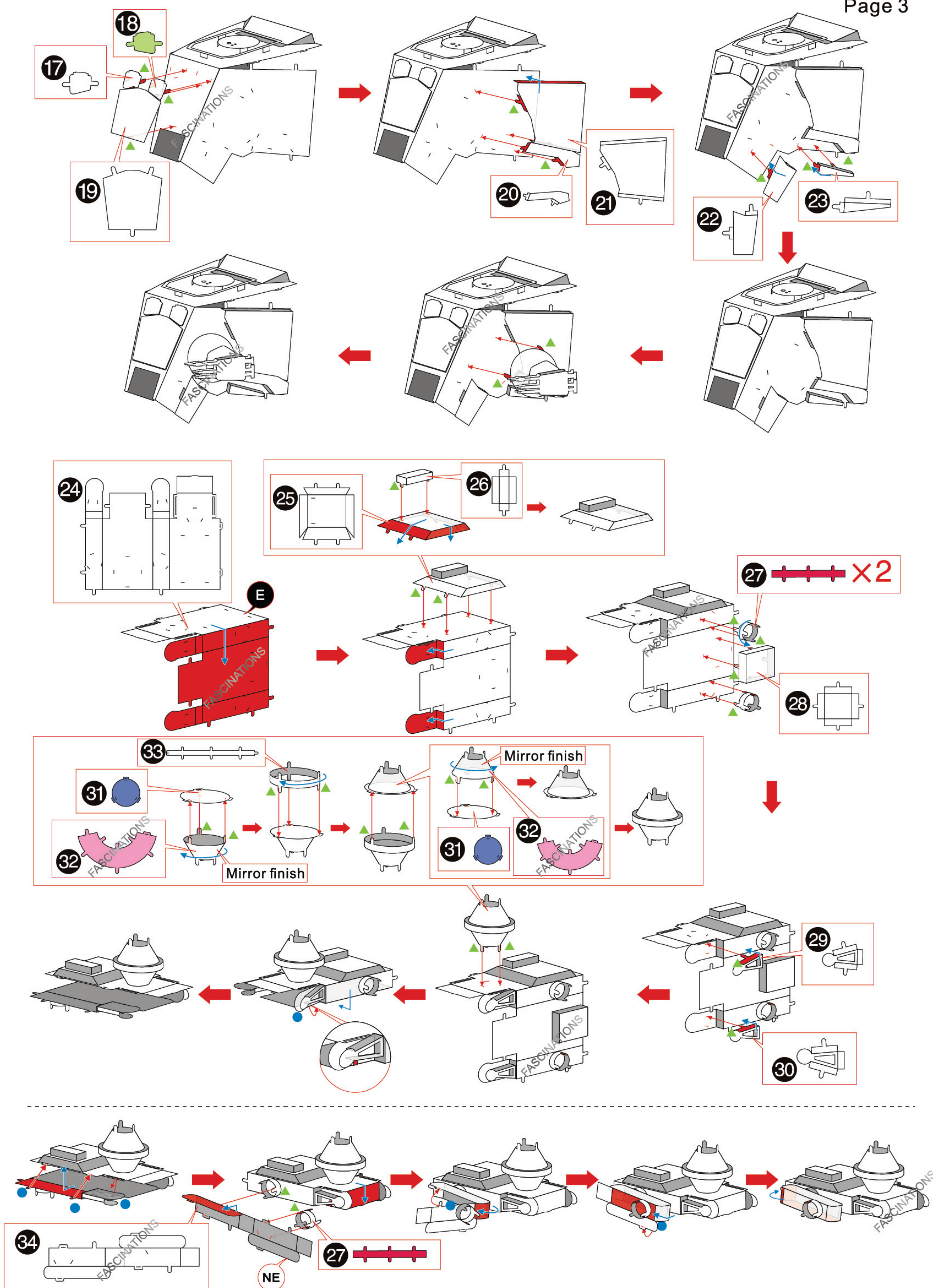
-Tweezers or needle nose pliers: helpful for folding parts, bending and twisting tabs.

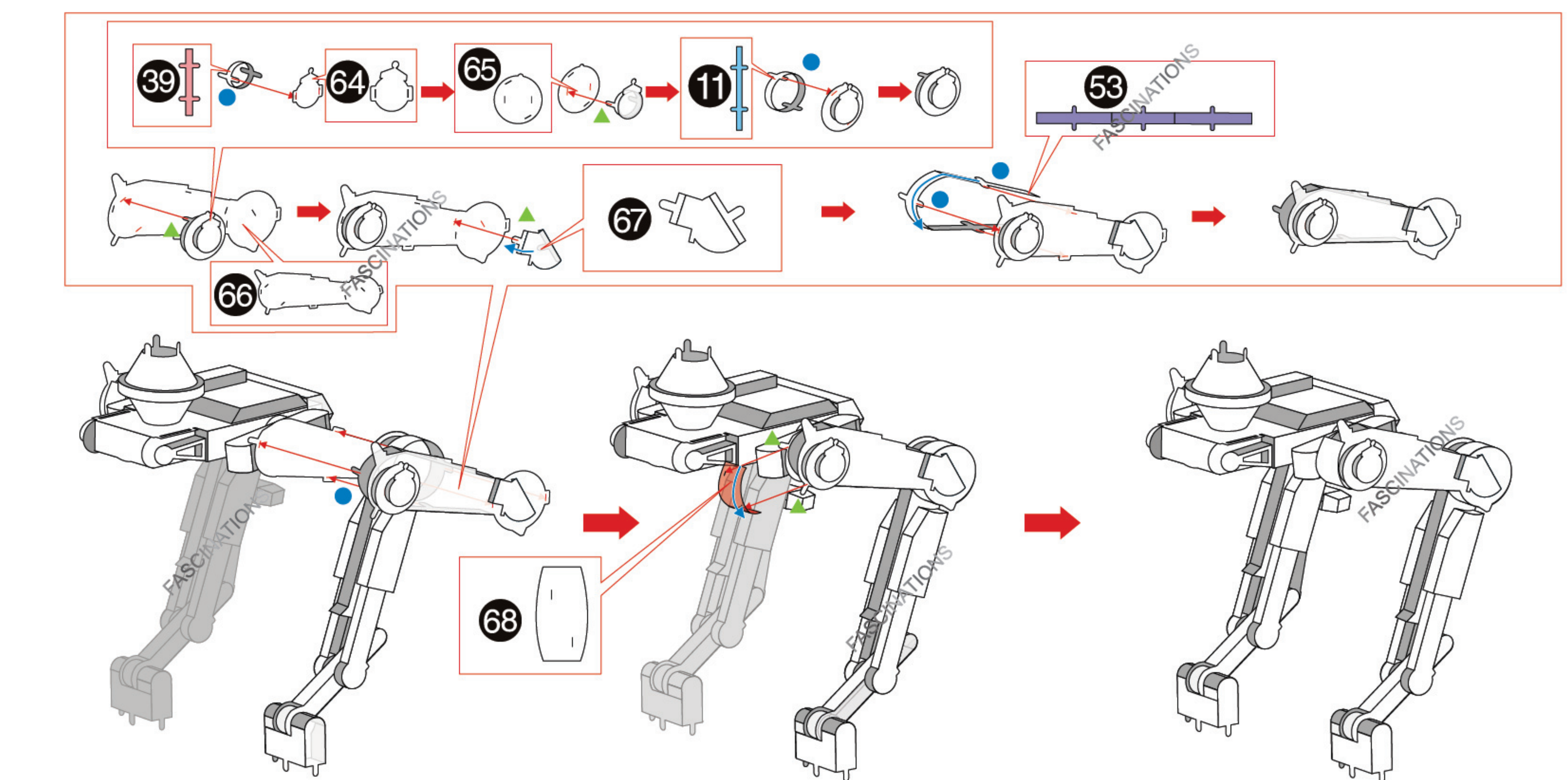
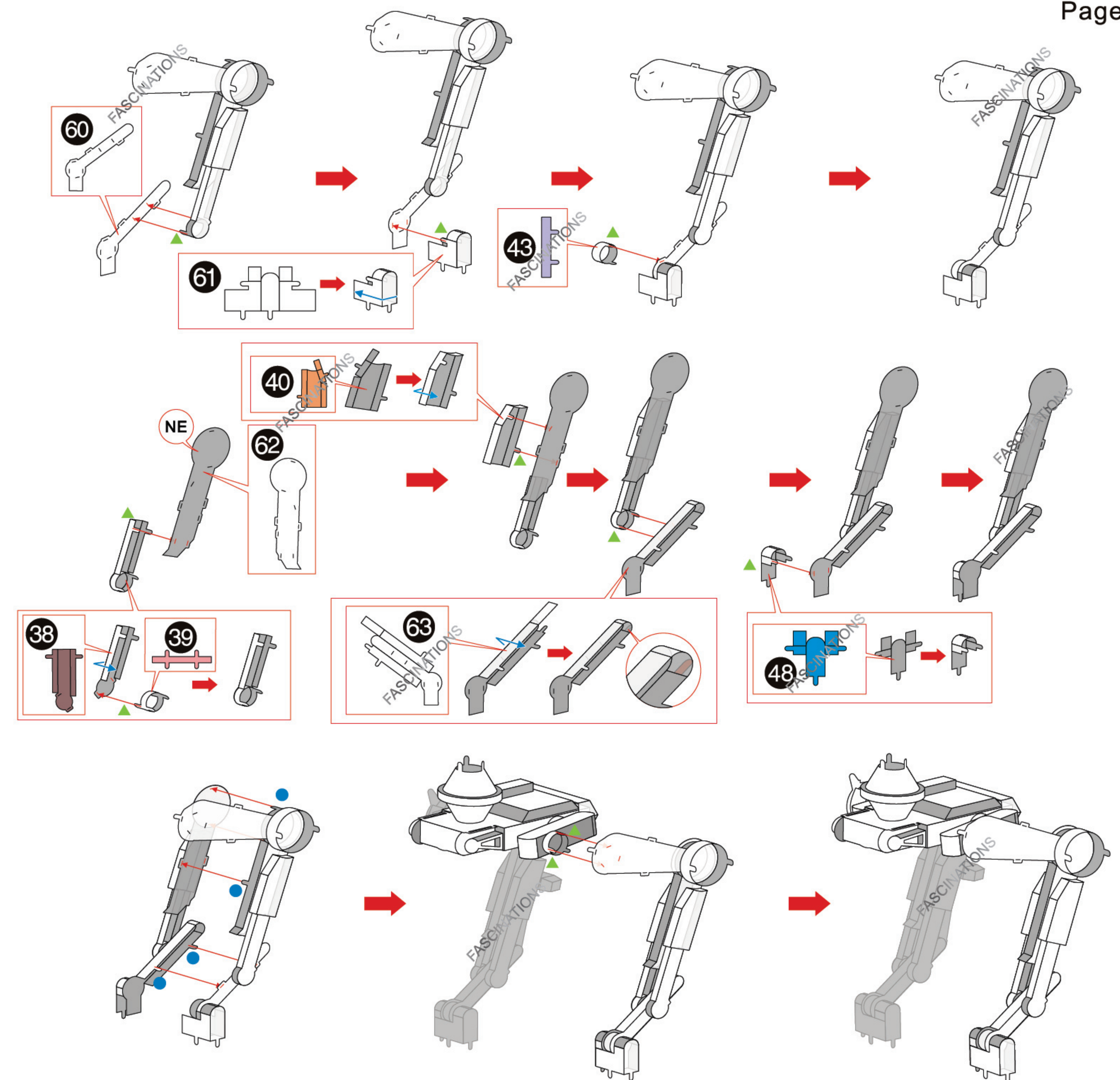
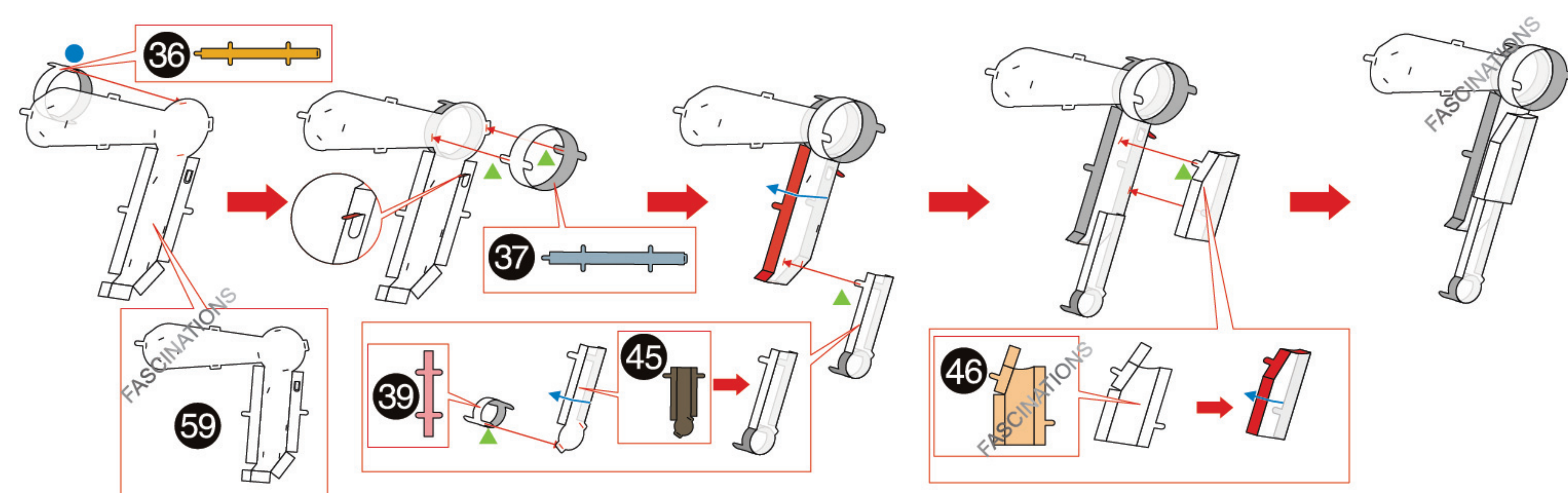
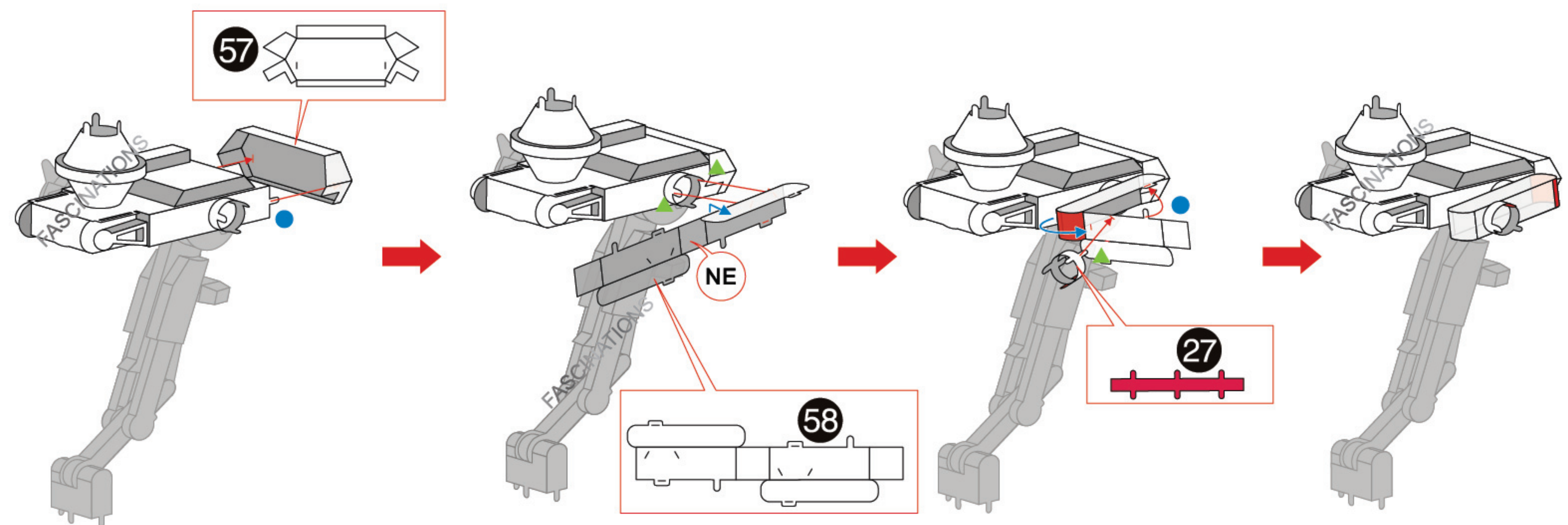
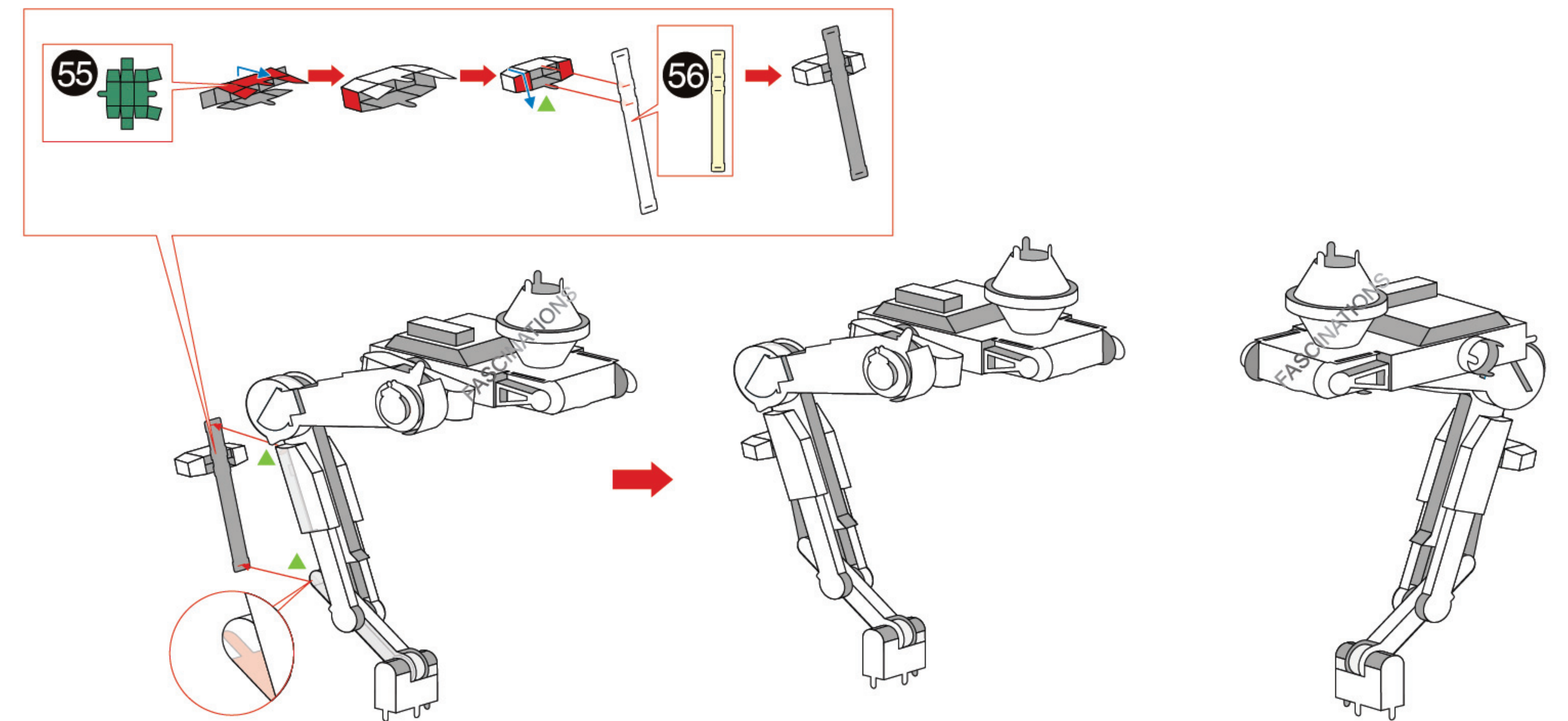
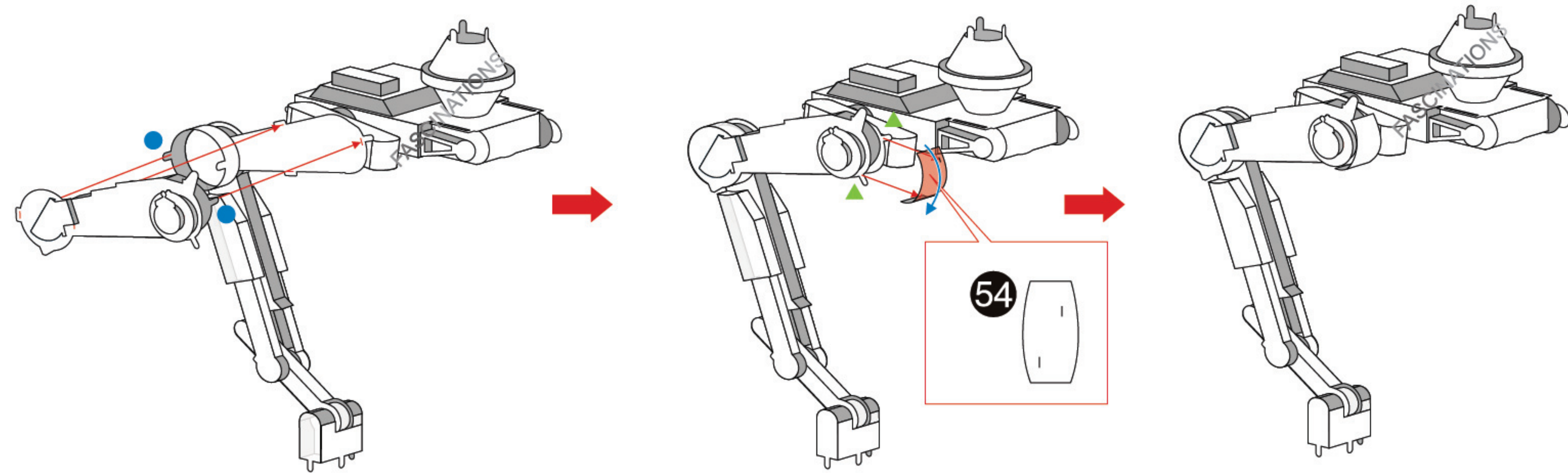


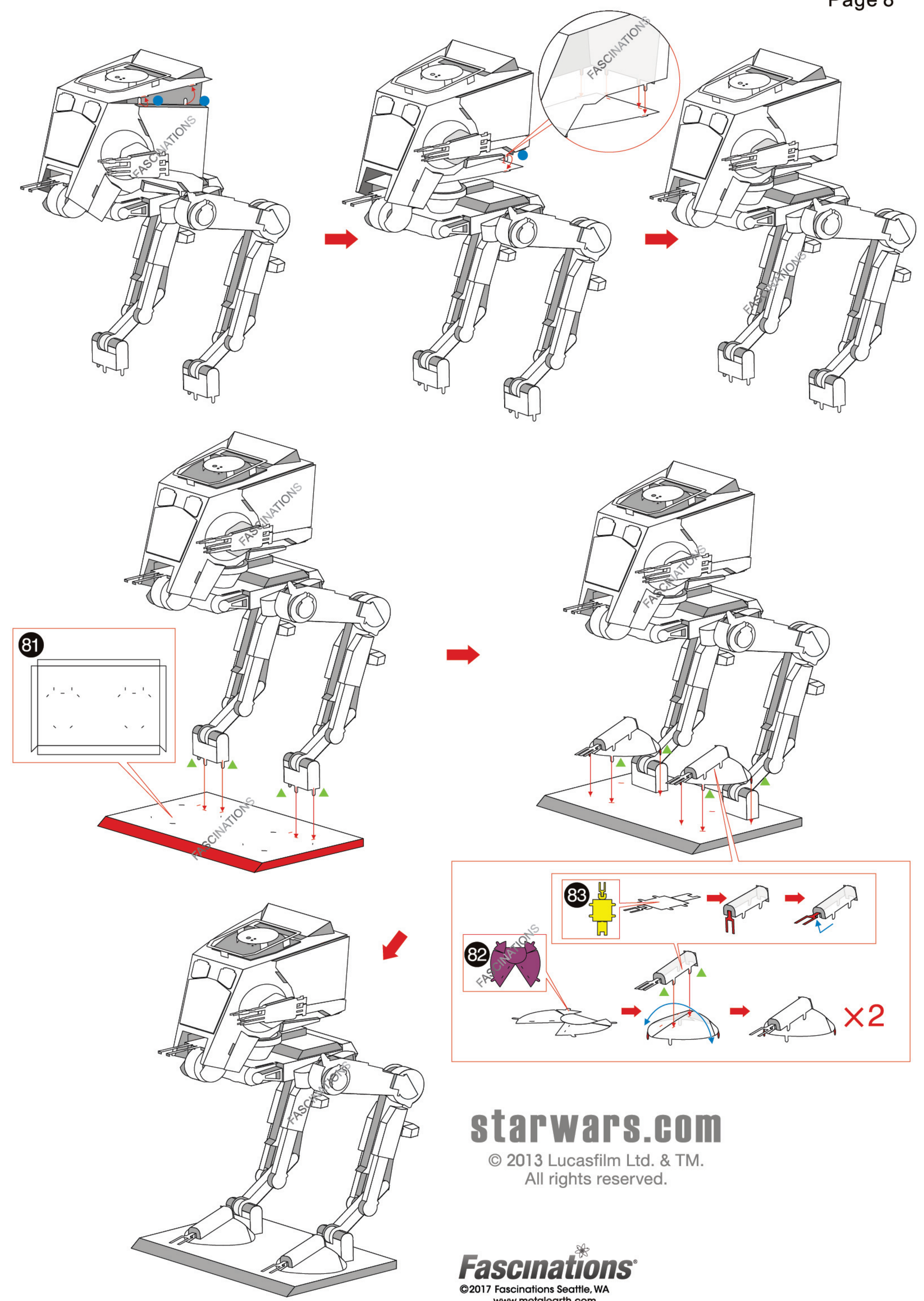
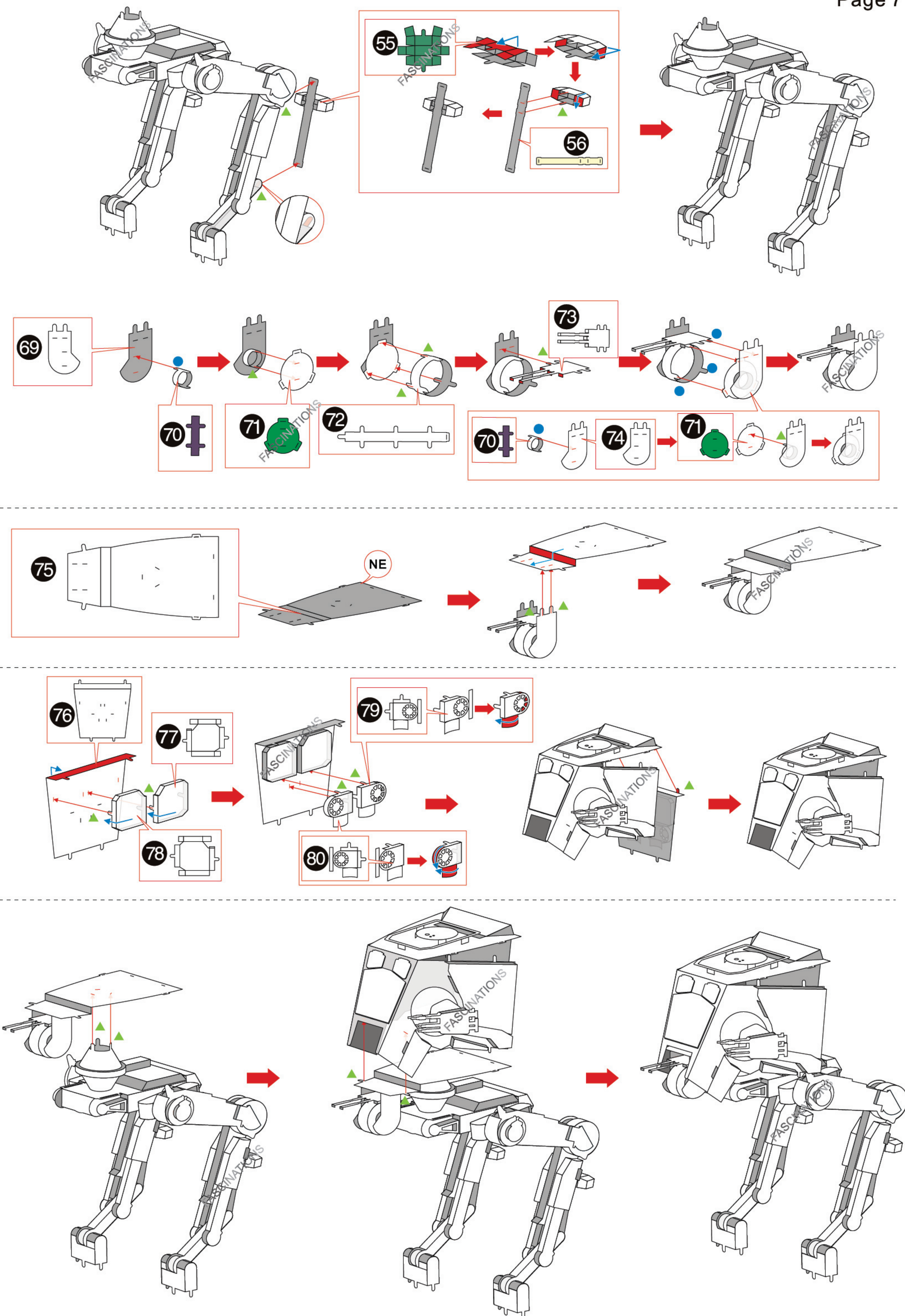
In order to avoid possible injury from sharp edges, please carefully discard the metal sheets after parts have been removed

Assembly Flow Chart









starwars.com

© 2013 Lucasfilm Ltd. & TM.
All rights reserved.

Fascinations
©2017 Fascinations Seattle, WA
www.metalearth.com