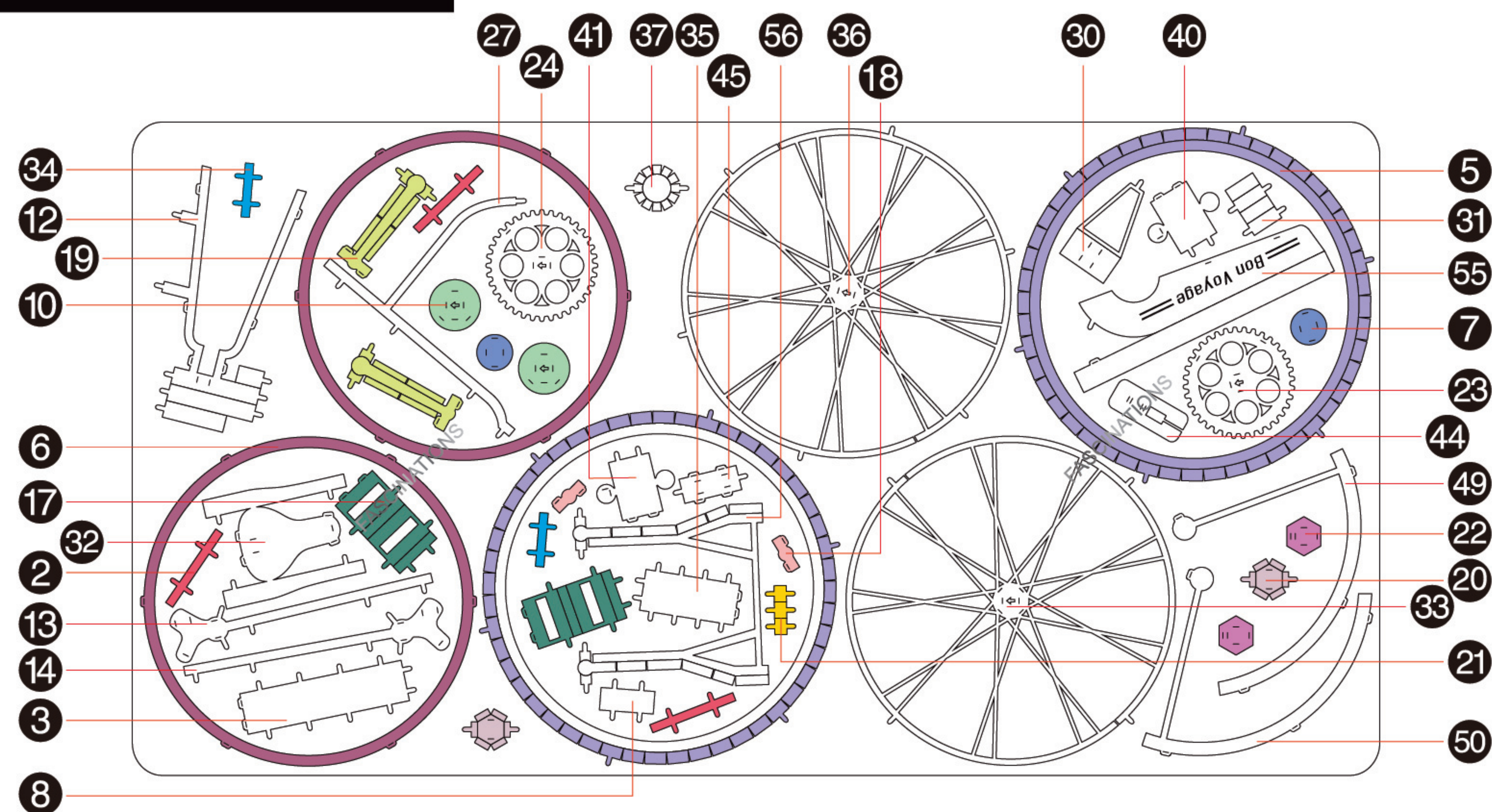
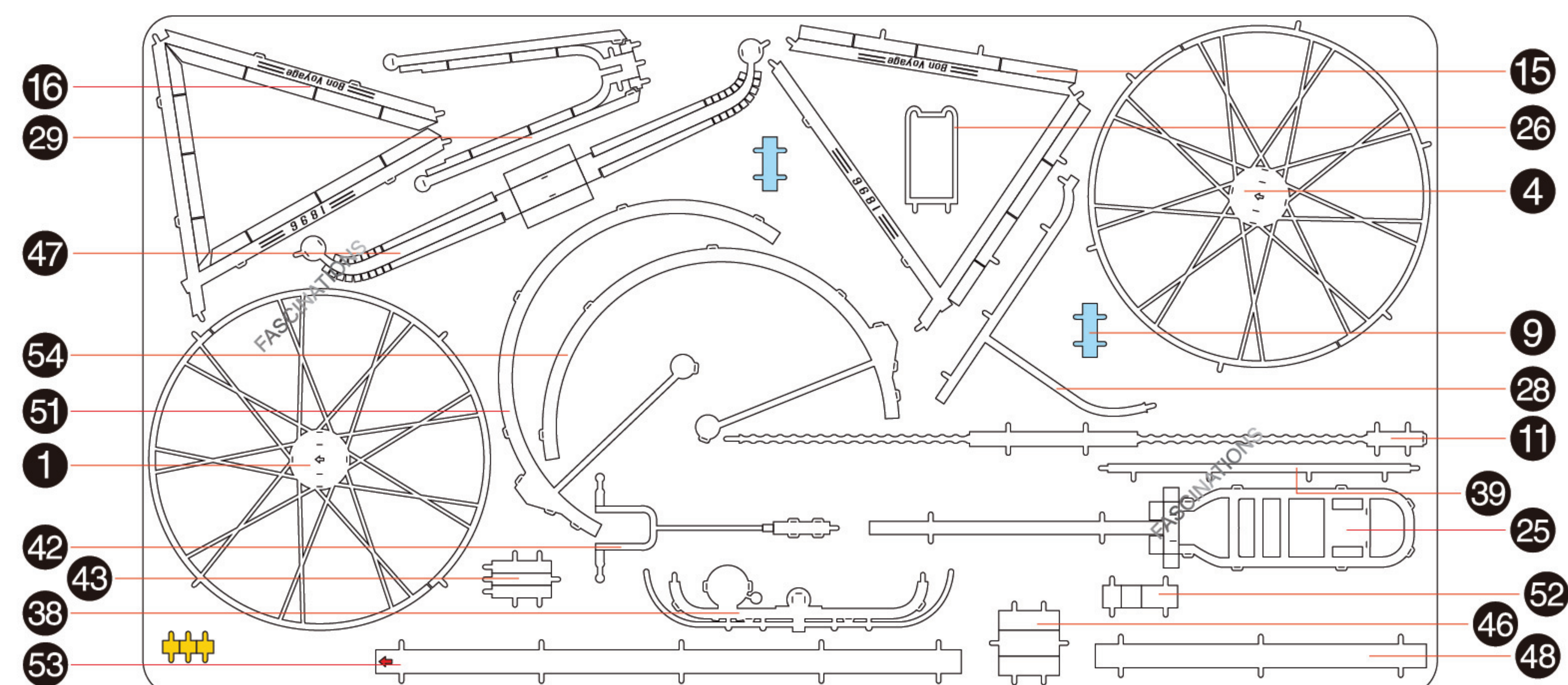


## METAL SHEET 1



## METAL SHEET 2



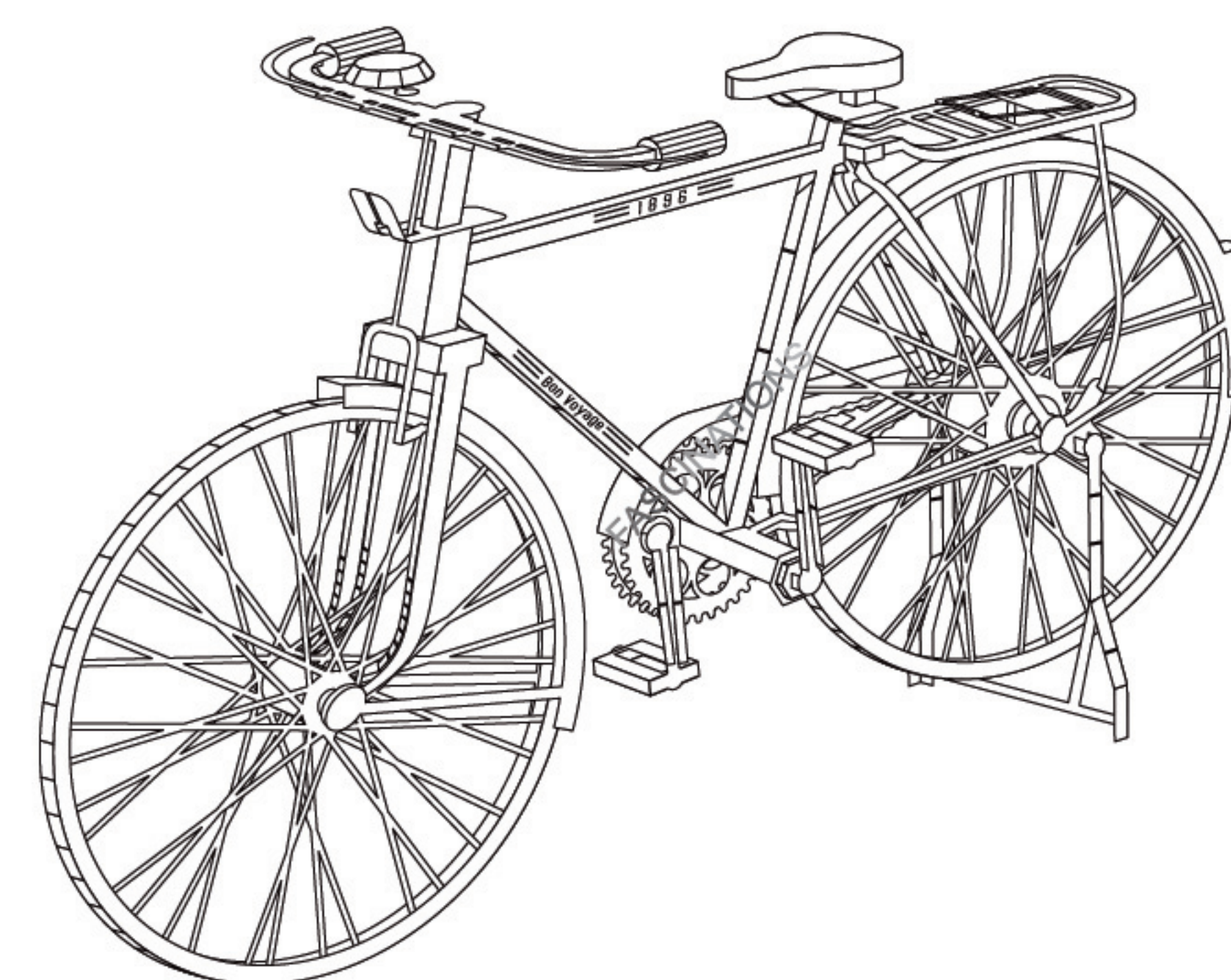
In order to avoid possible injury from sharp edges, please carefully discard the metal sheets after parts have been removed



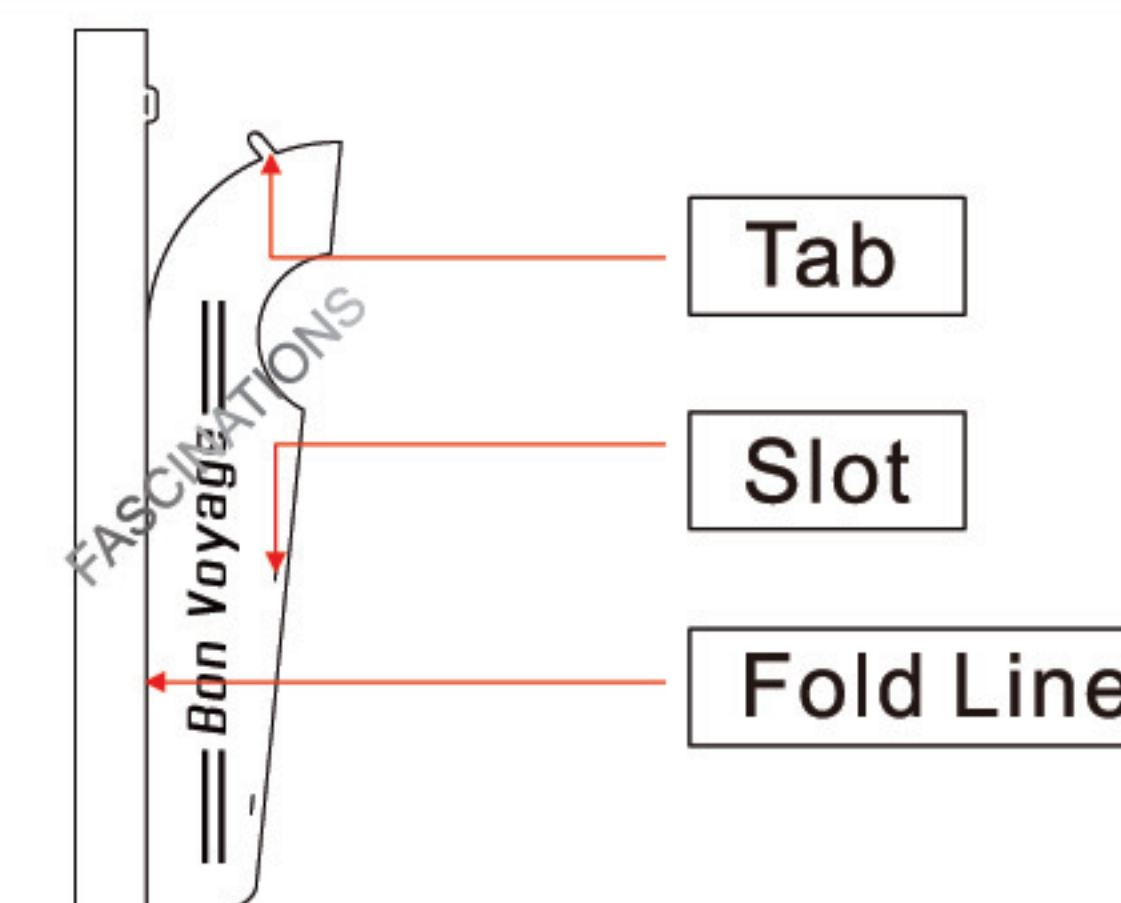
Go to [www.metal-earth.com/360/icx020](http://www.metal-earth.com/360/icx020) to see the zoomable PDF version of this instruction sheet

ICX020

## Classic Bicycle



## TO CREATE THE BEST CONNECTIONS



### Legends:

- Engraved side
- Non-engraved side
- Attention point
- Insert tab and bend 90 degrees
- Insert tab and twist 90 degrees

### Assembly tip:

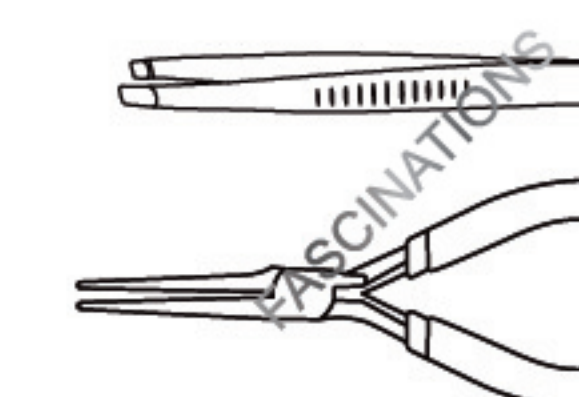
If needed, slightly twist tabs to hold parts together then untwist and bend them down for a nice finish

### Recommended tools:

-Wire cutters: helpful for taking parts from the metal sheets.

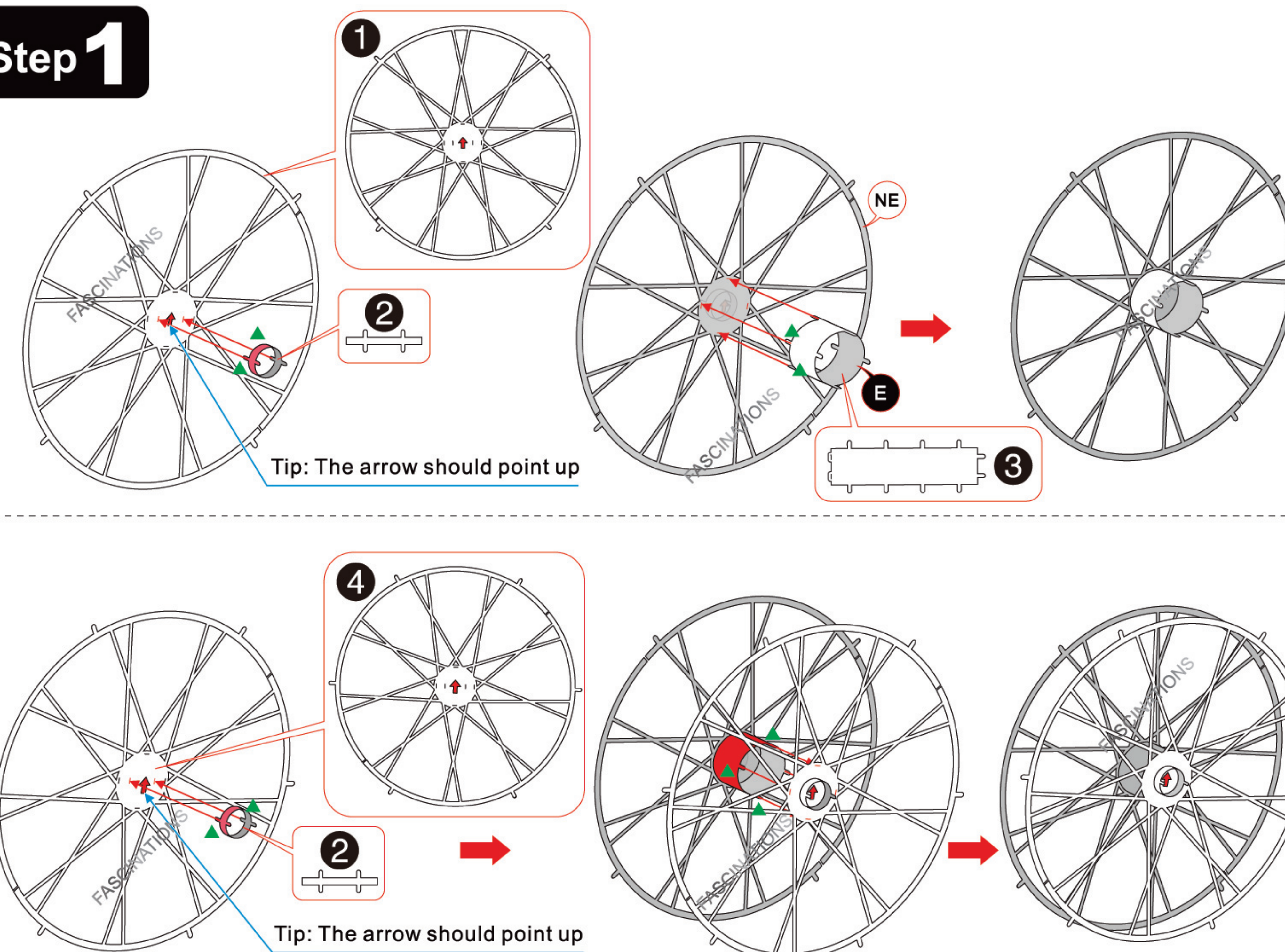


-Tweezers or needle nose pliers: helpful for folding parts, bending and twisting tabs.

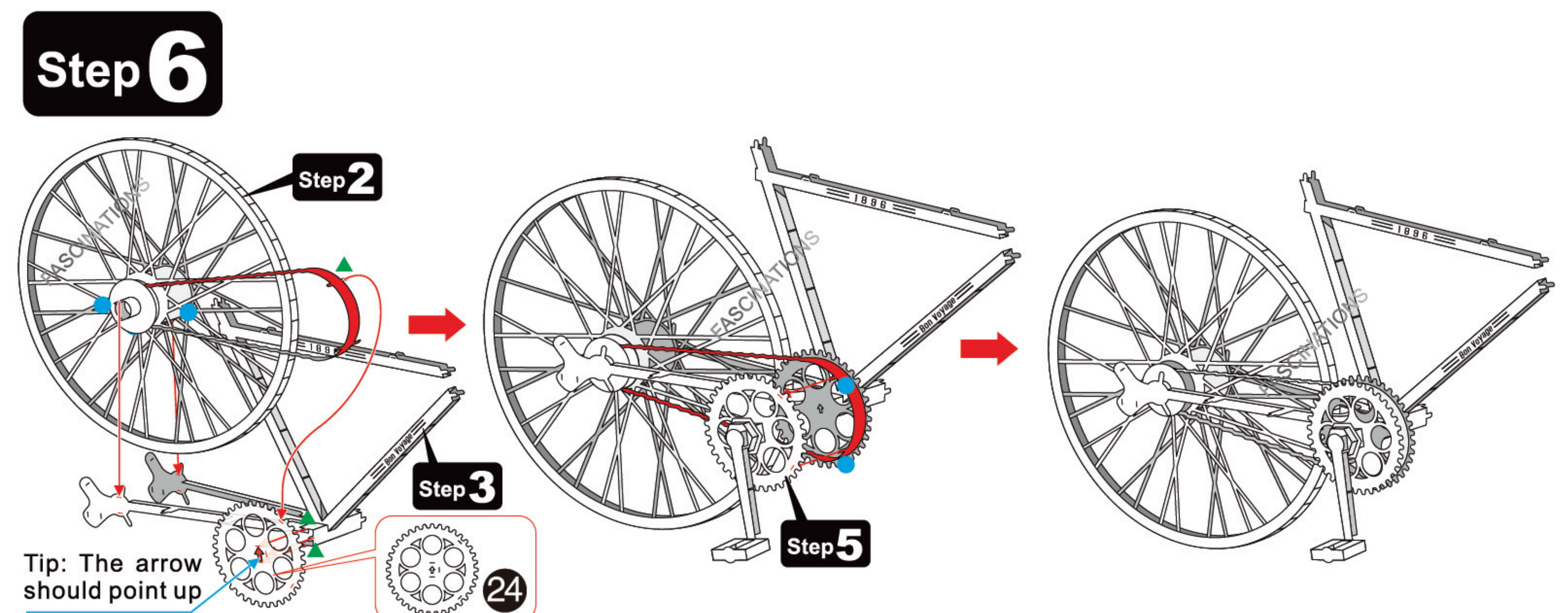
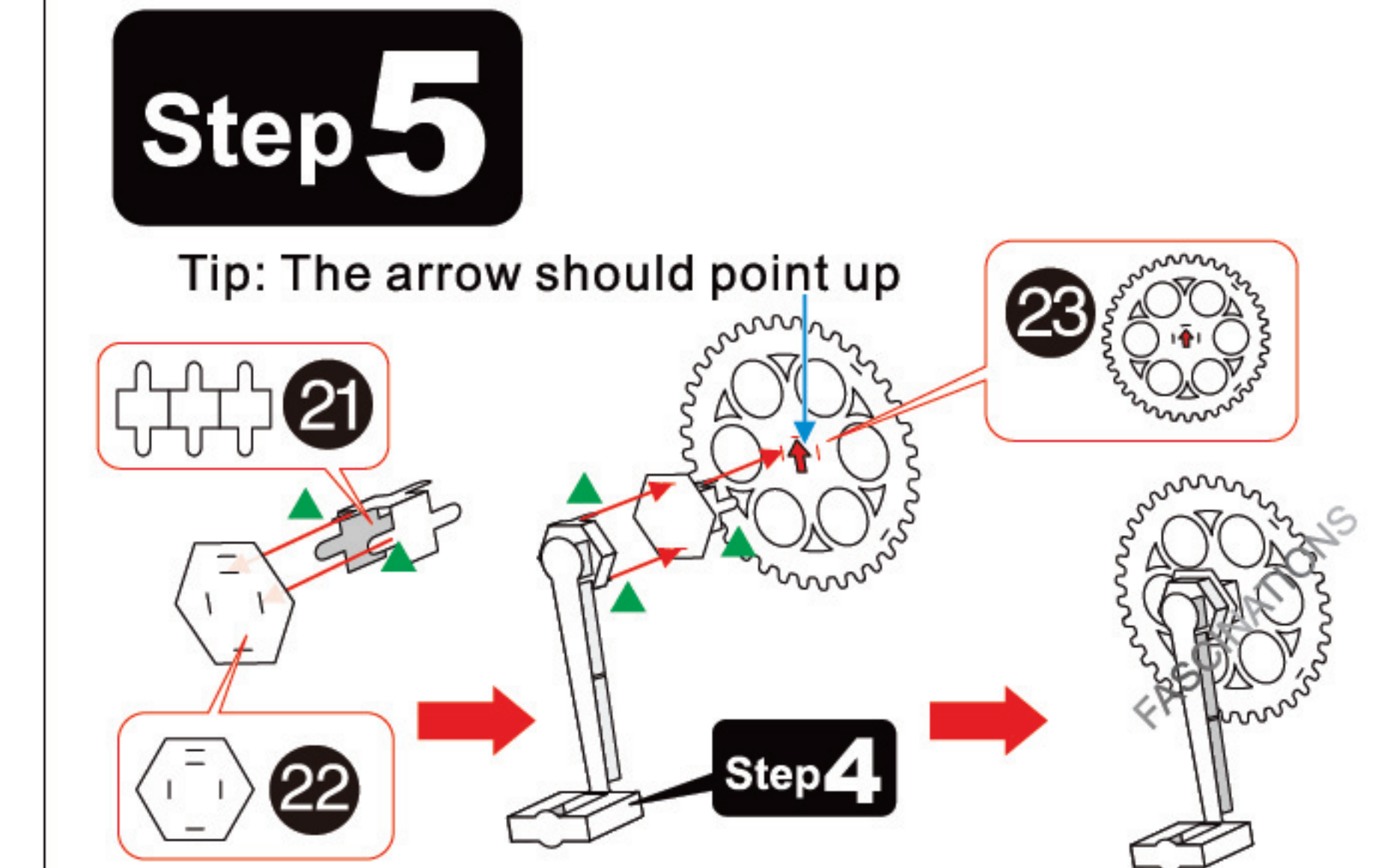
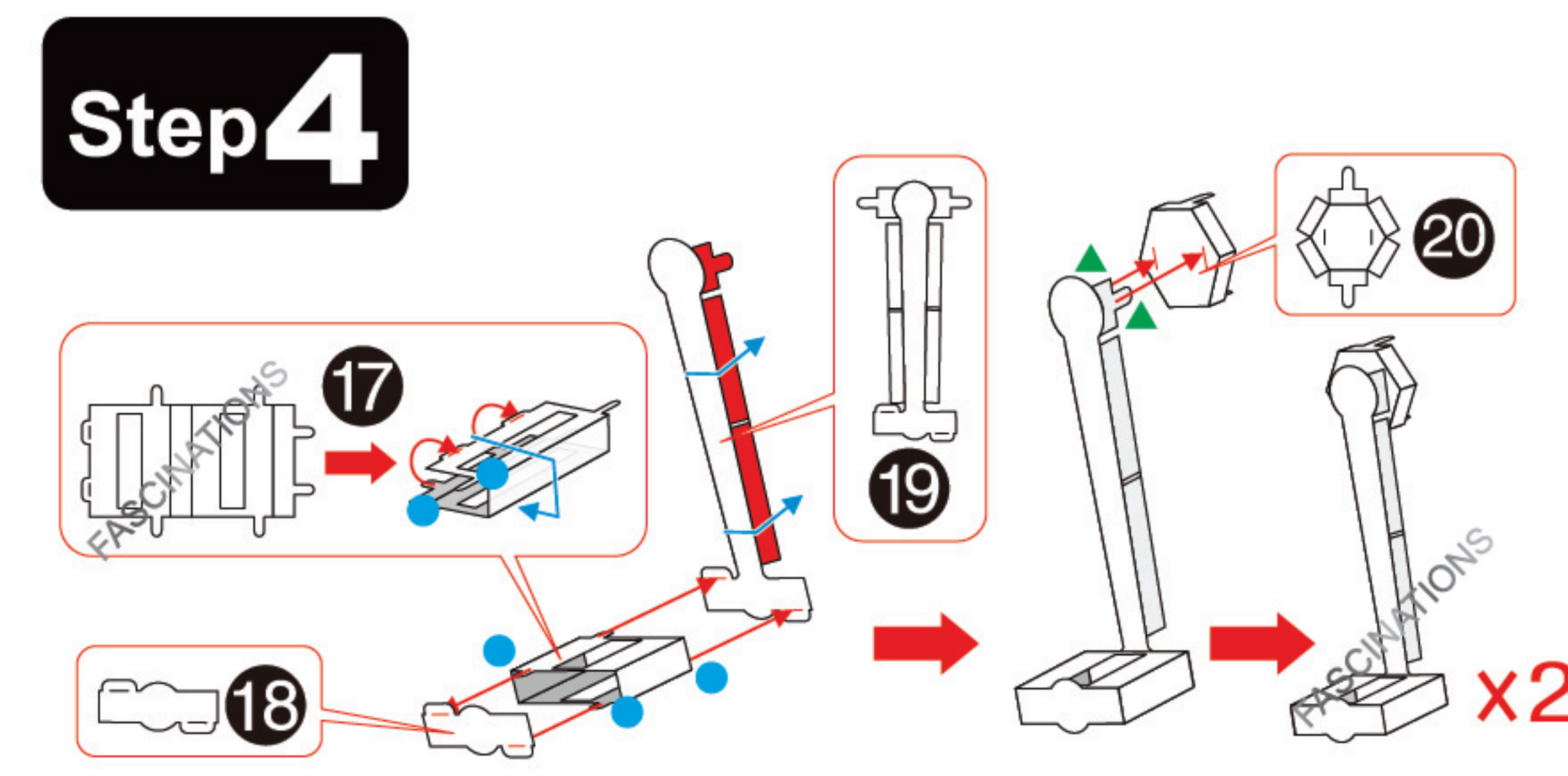
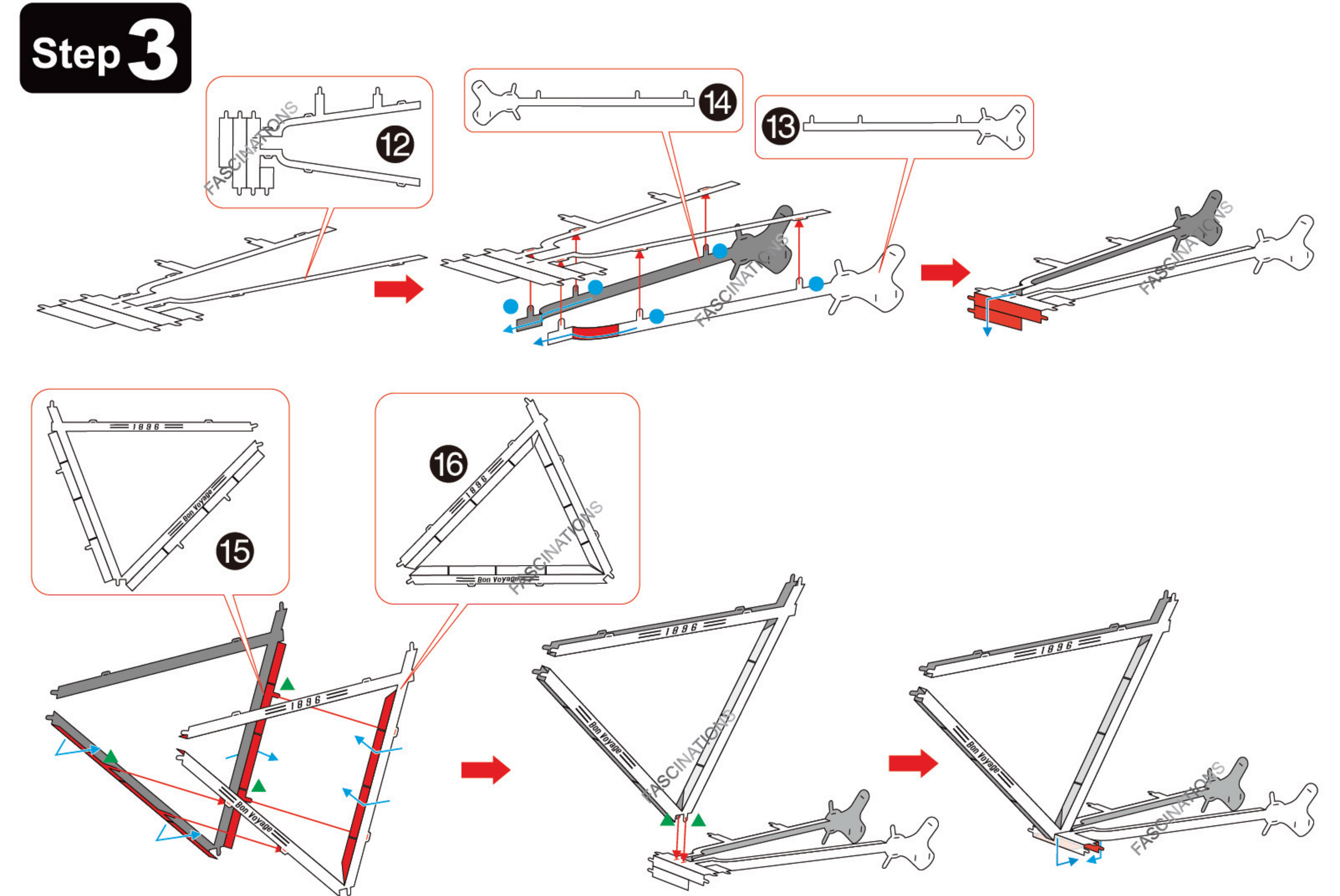
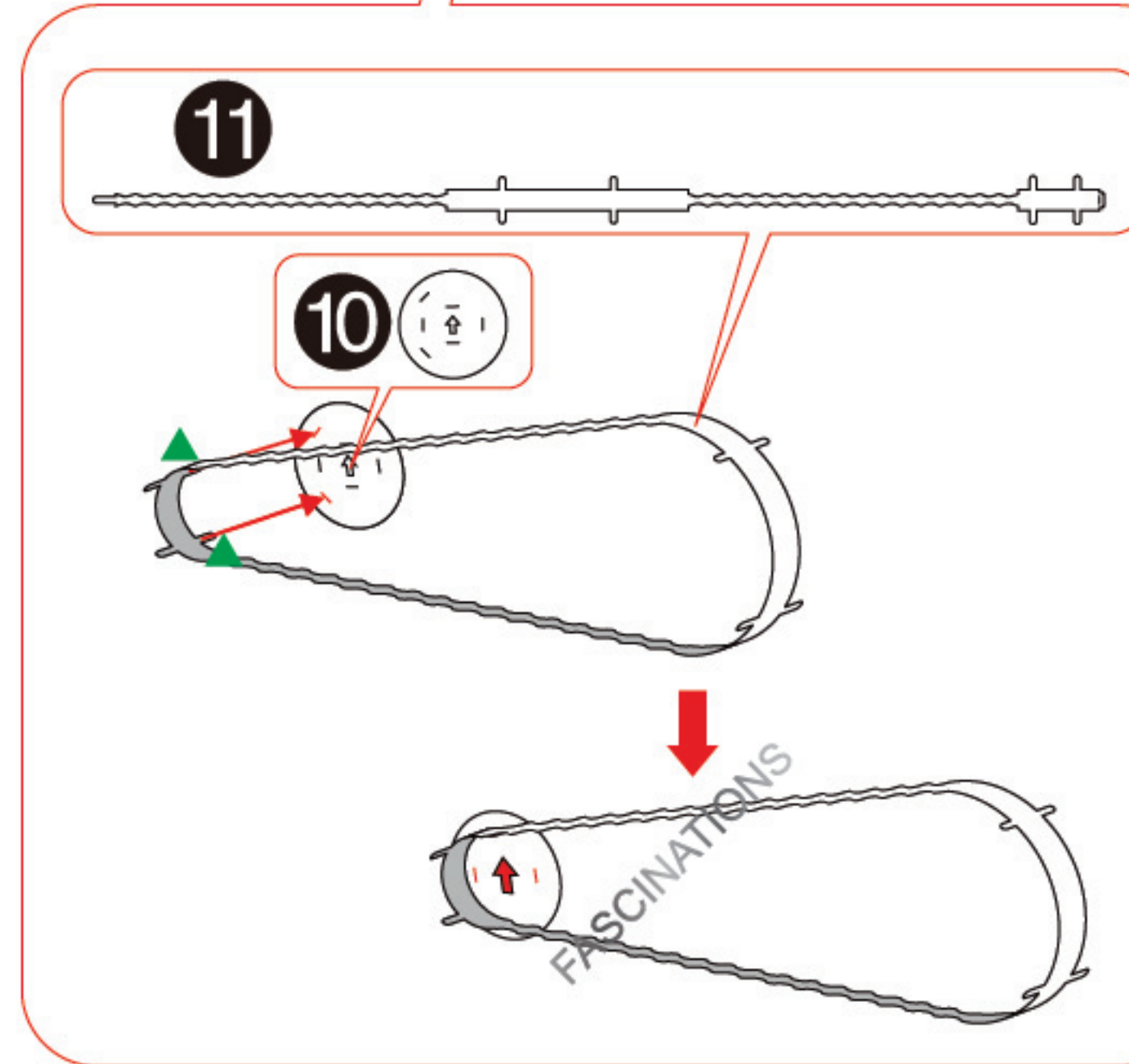
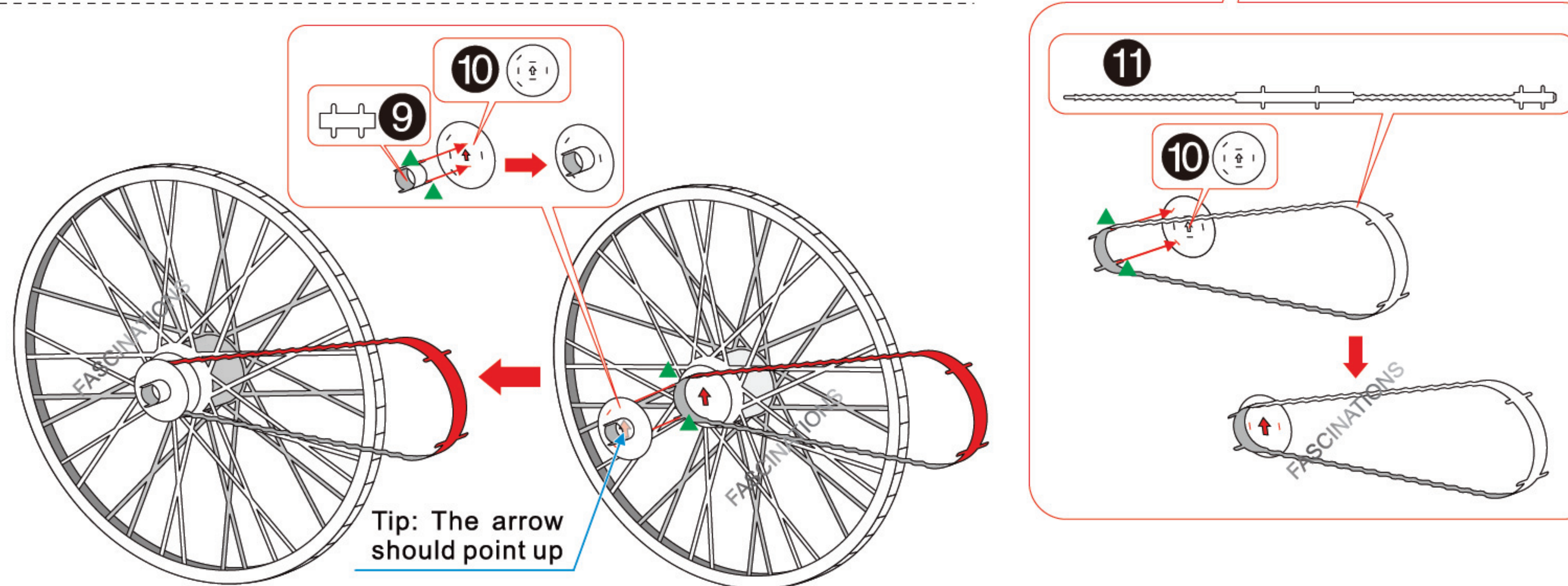
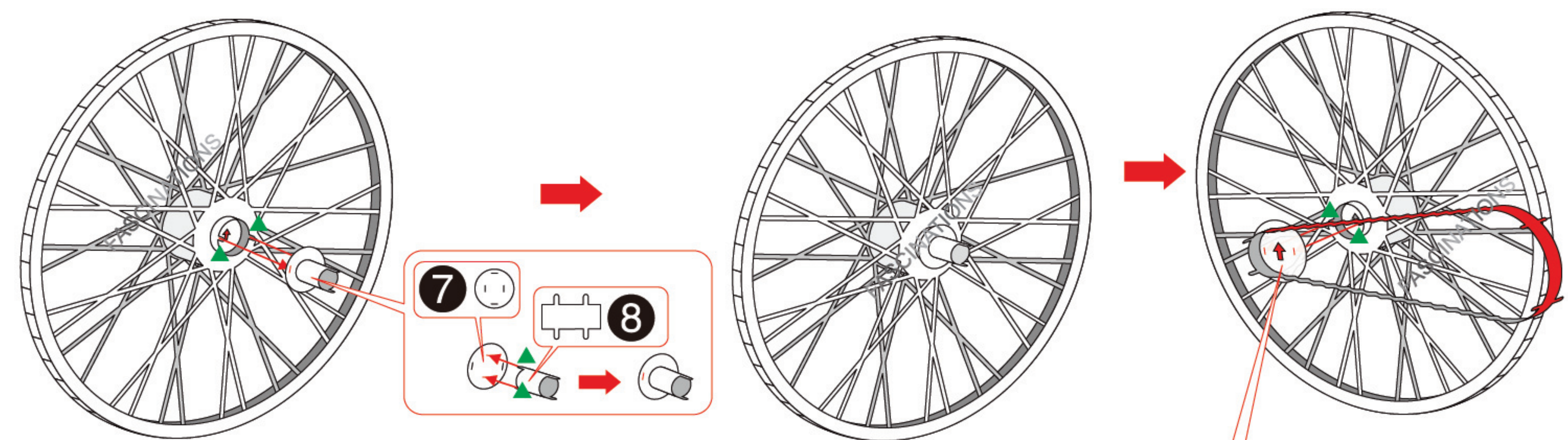
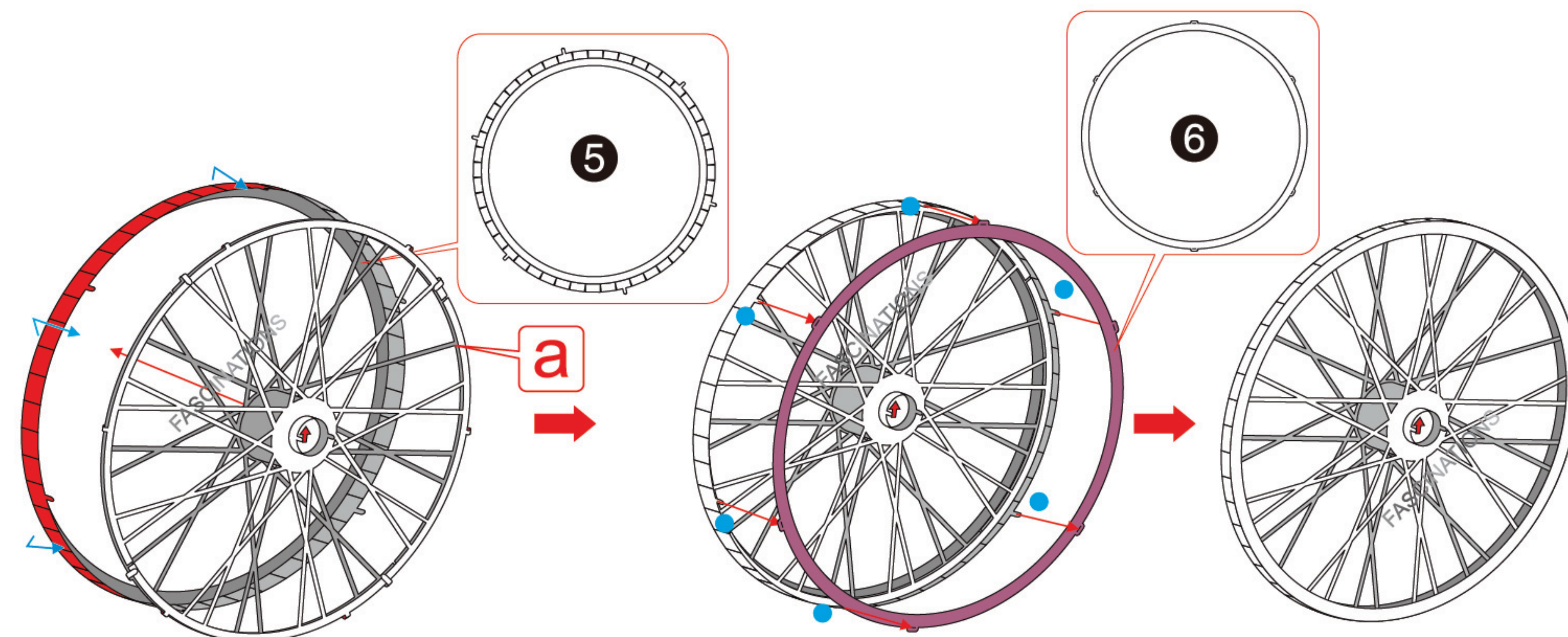
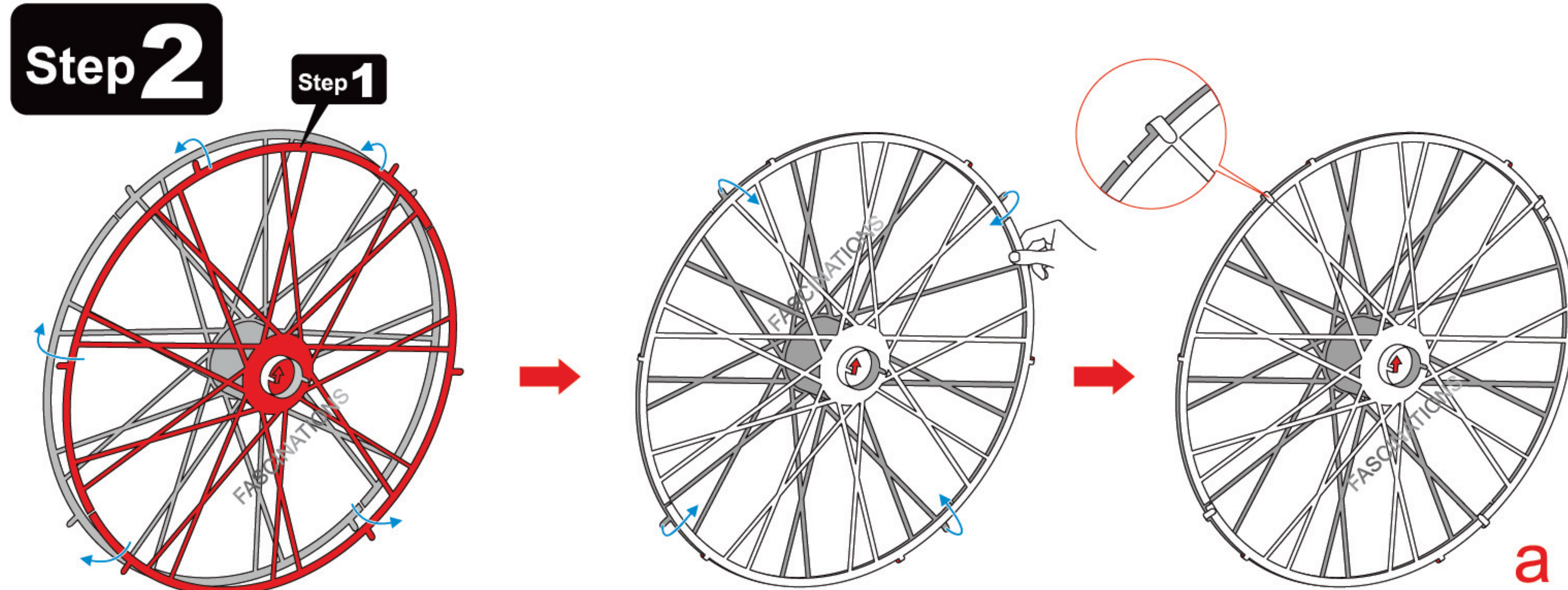


## ASSEMBLY STEPS

### Step 1

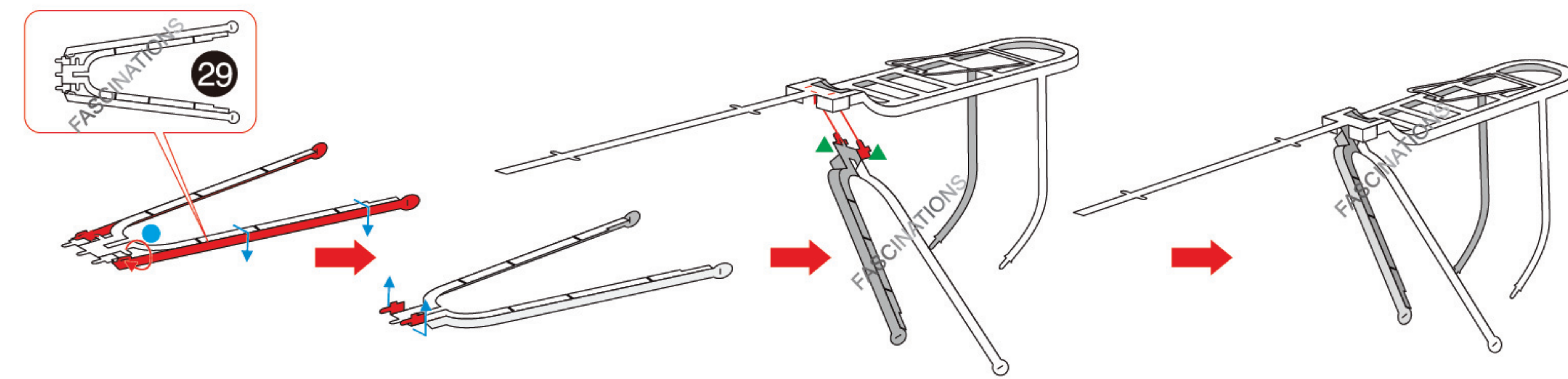
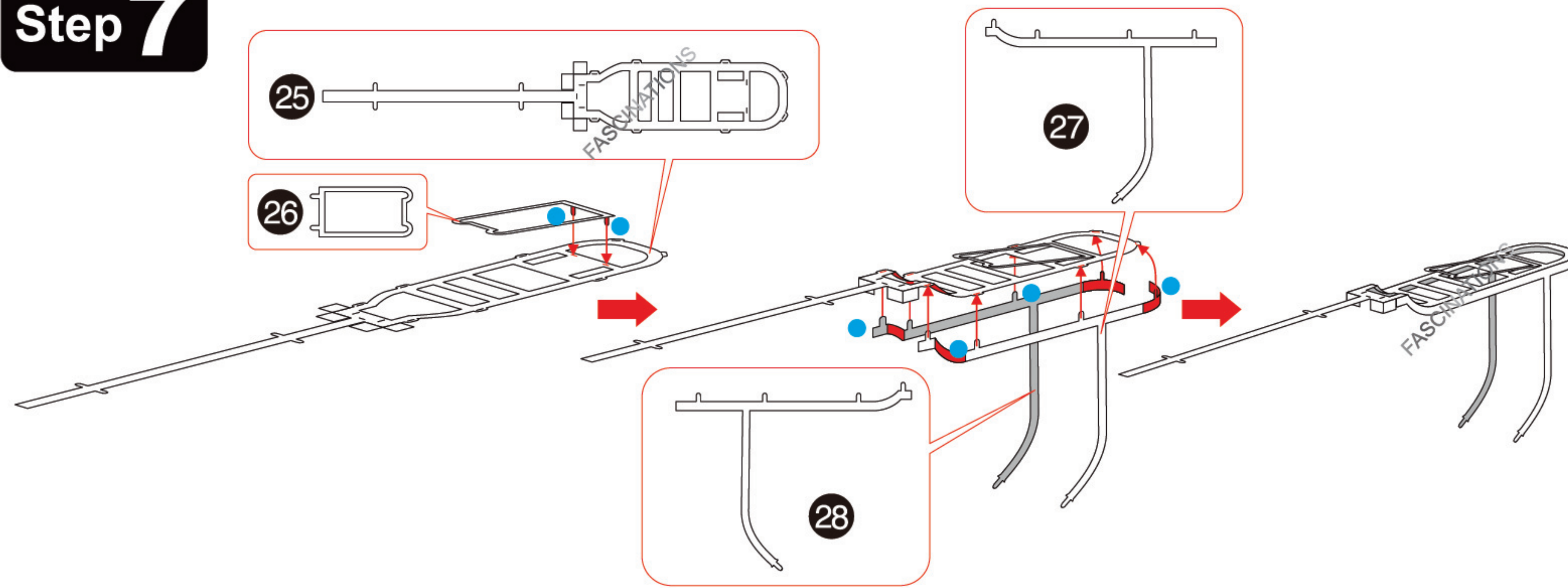




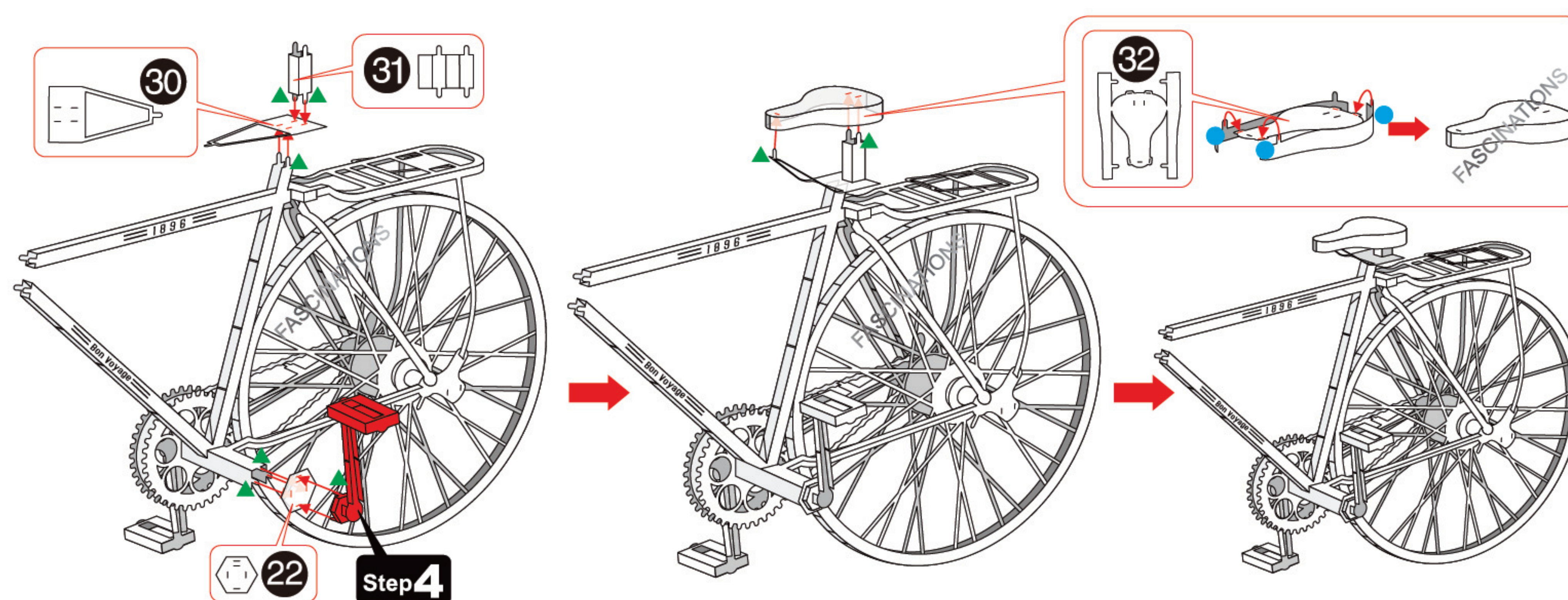
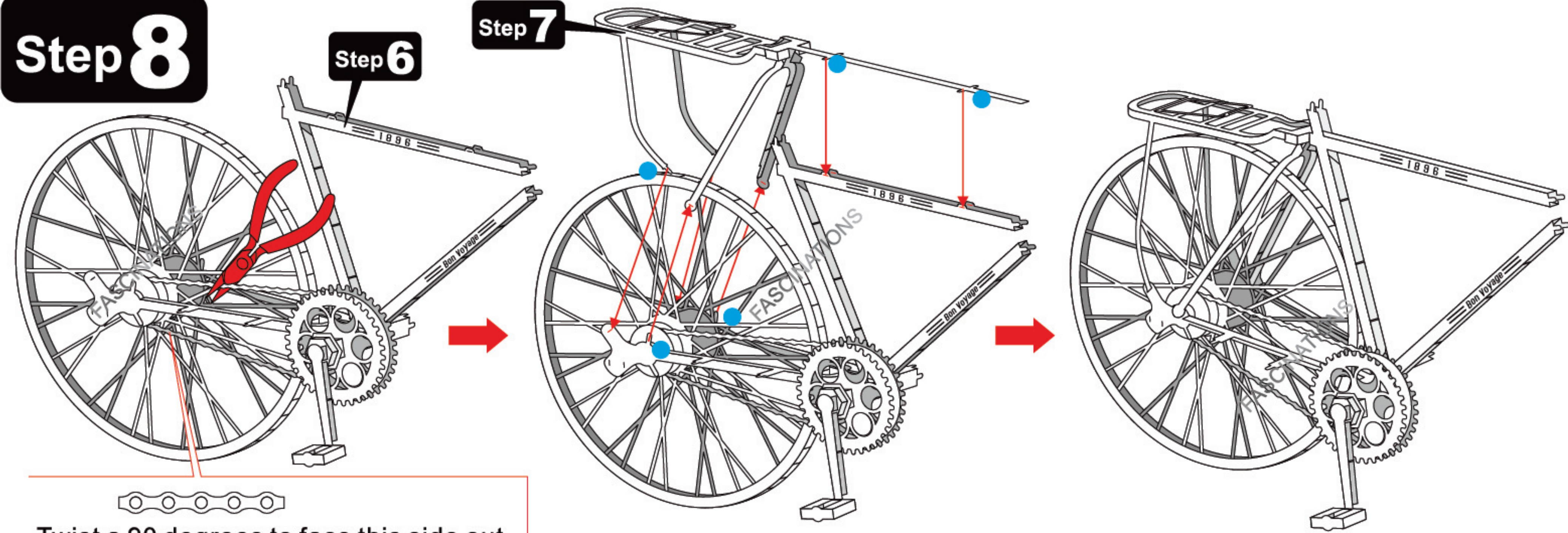




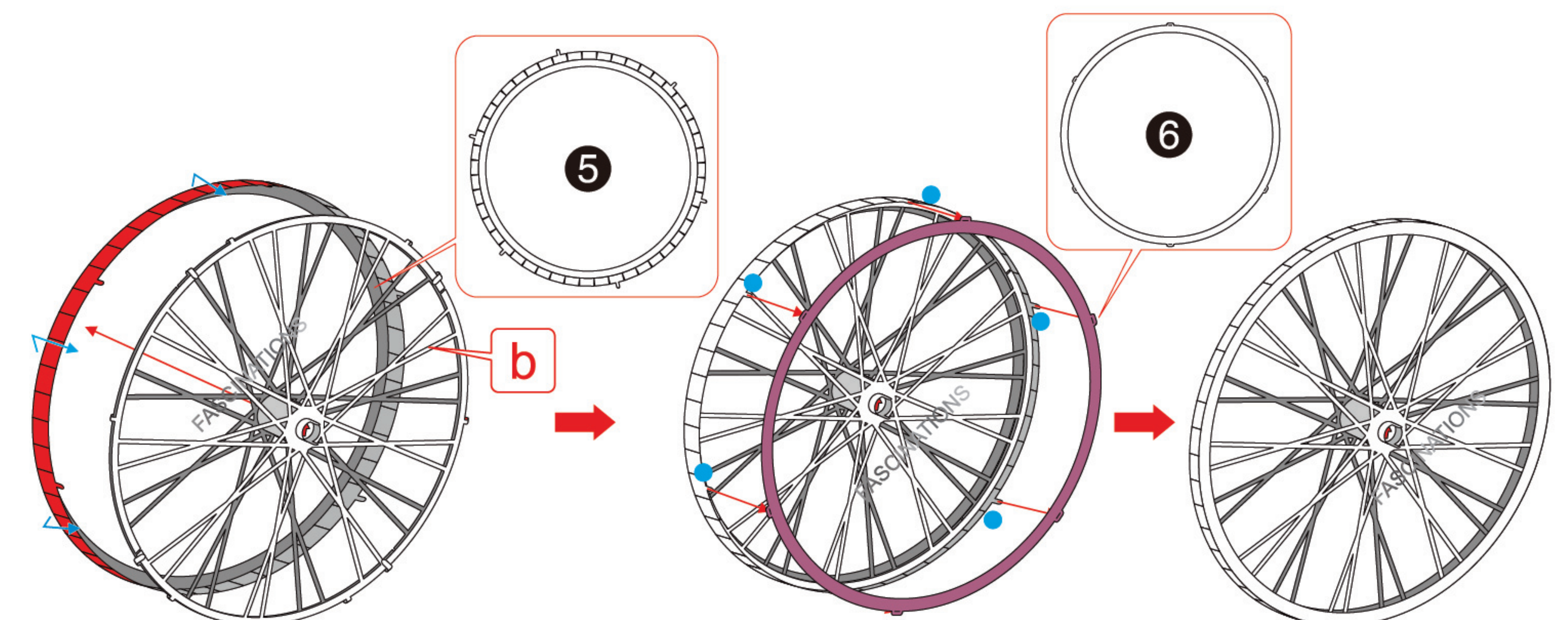
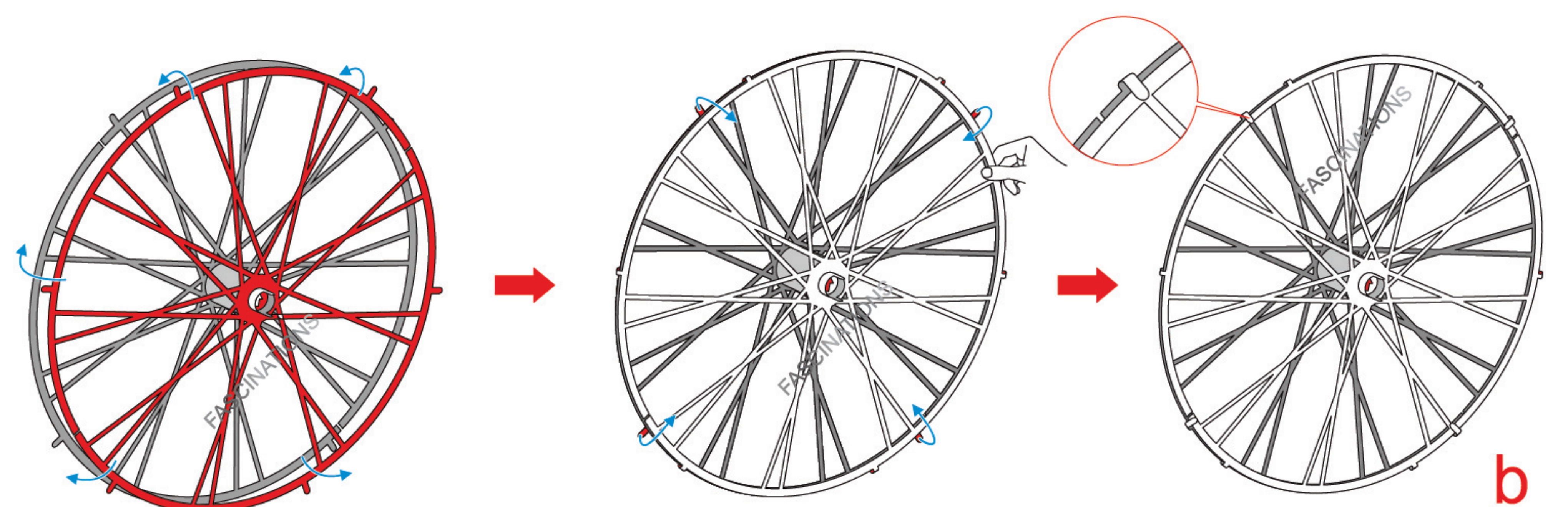
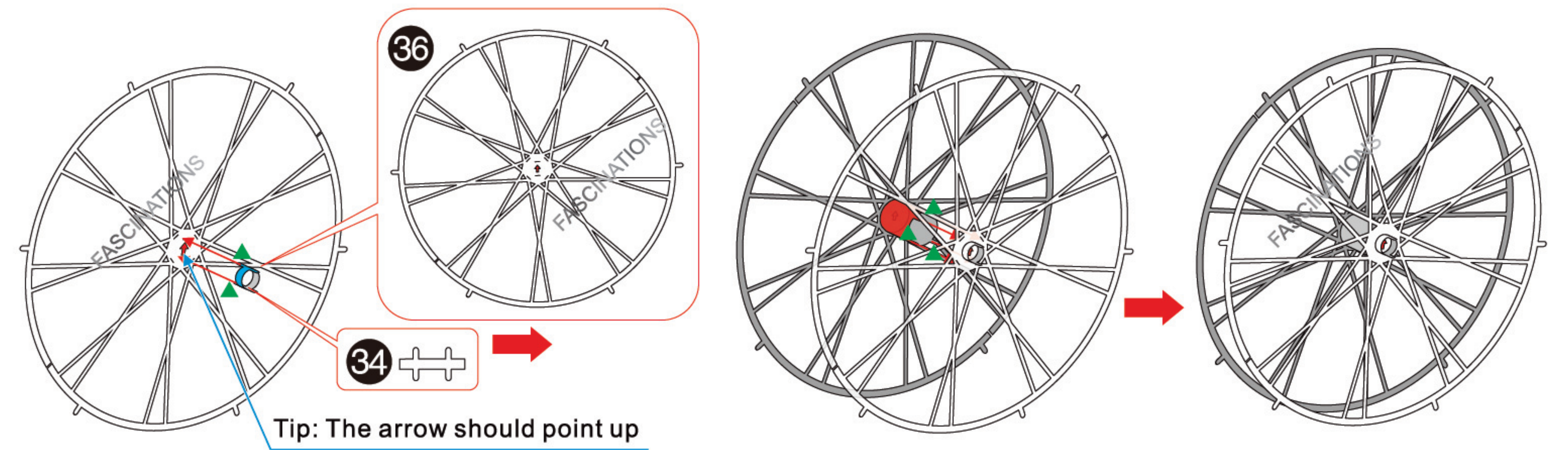
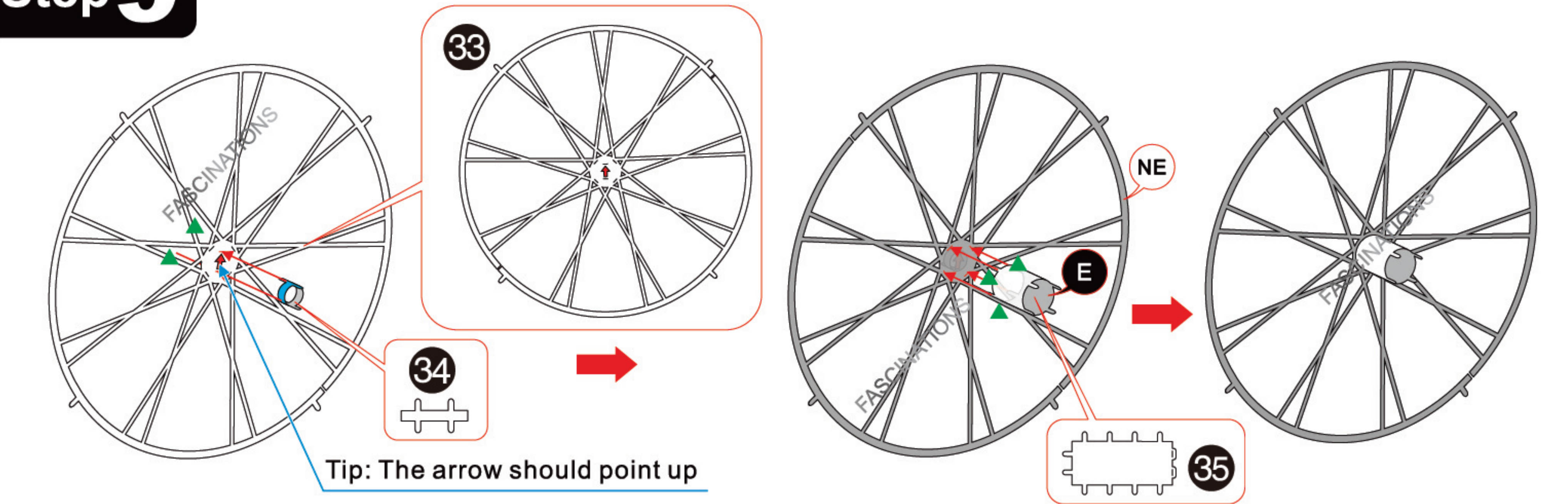
# Step 7



# Step 8

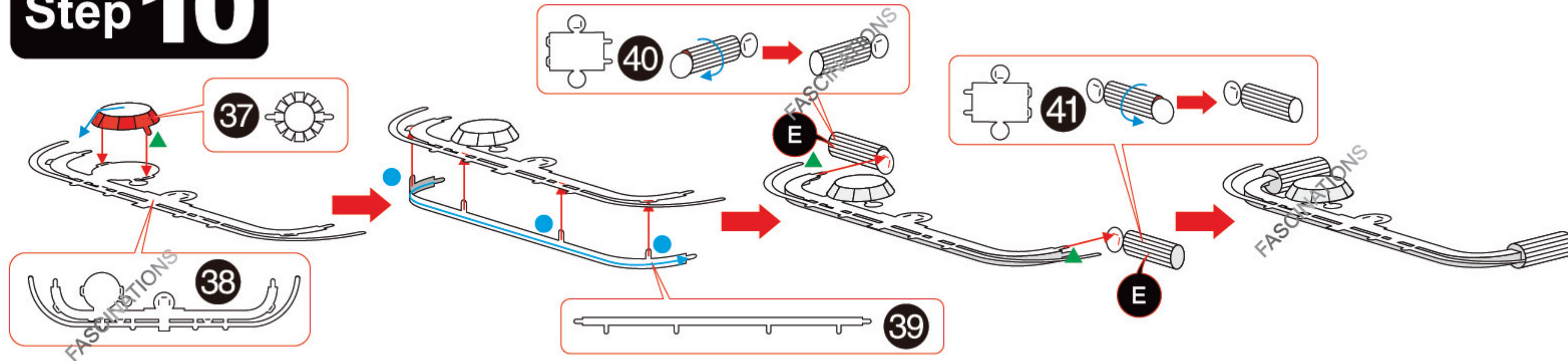


# Step 9

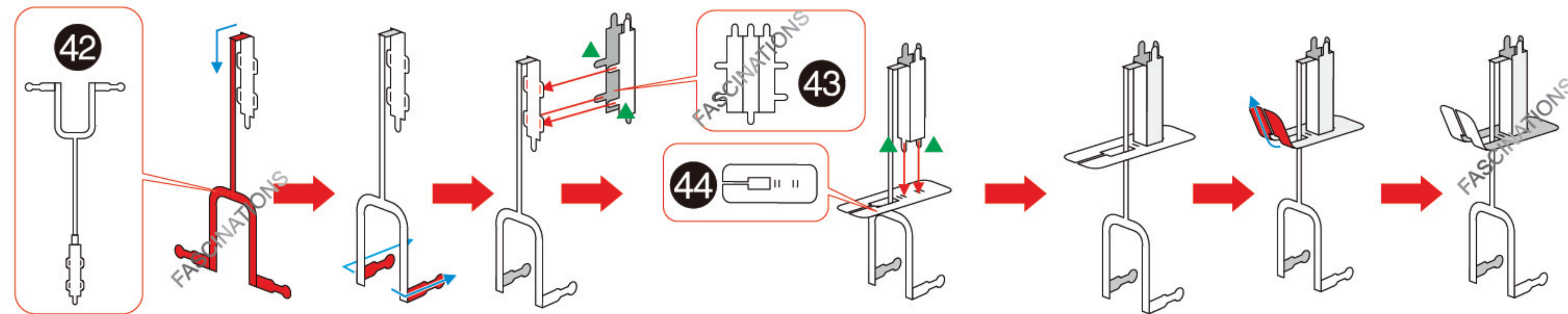




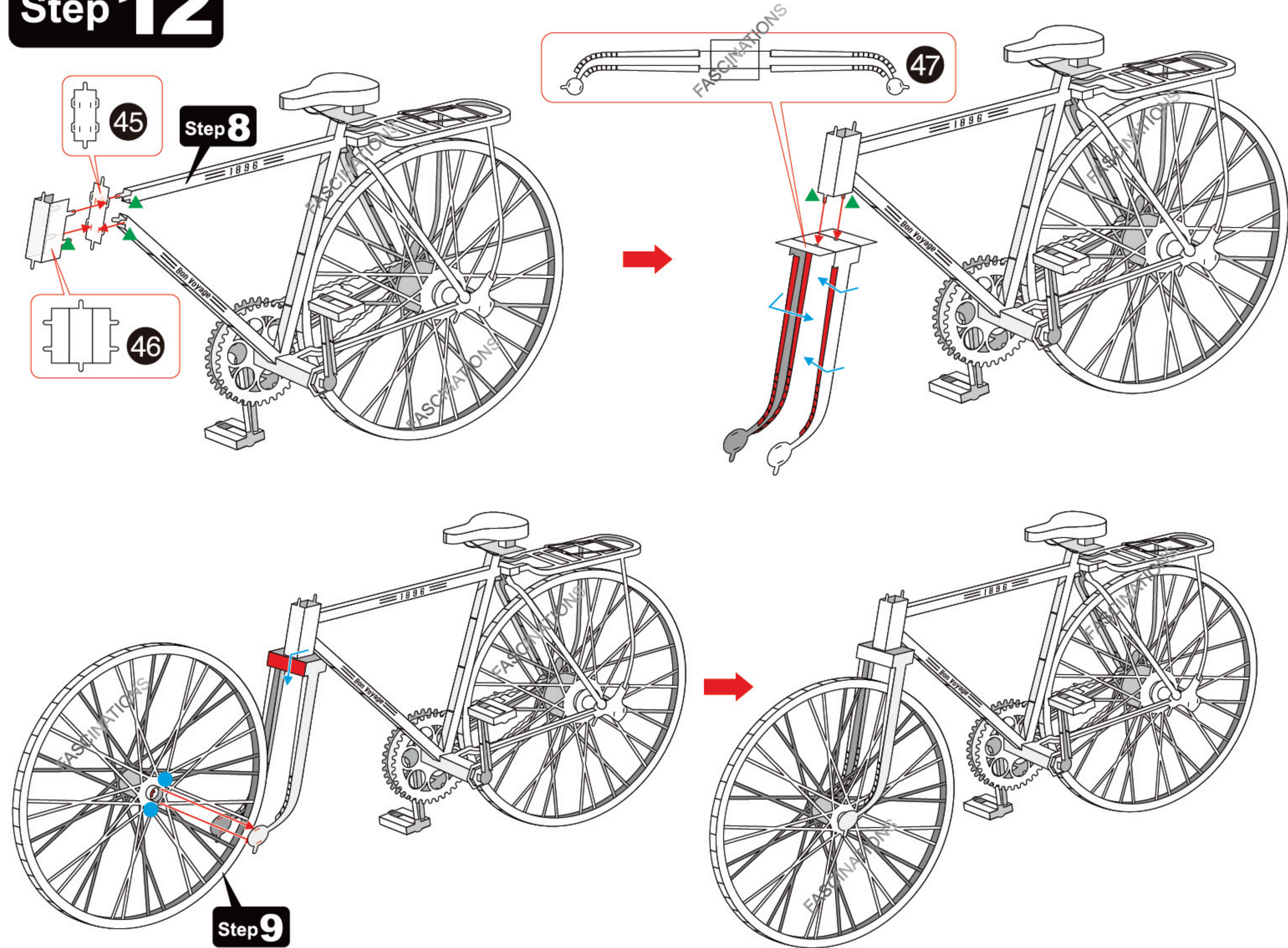
## Step 10



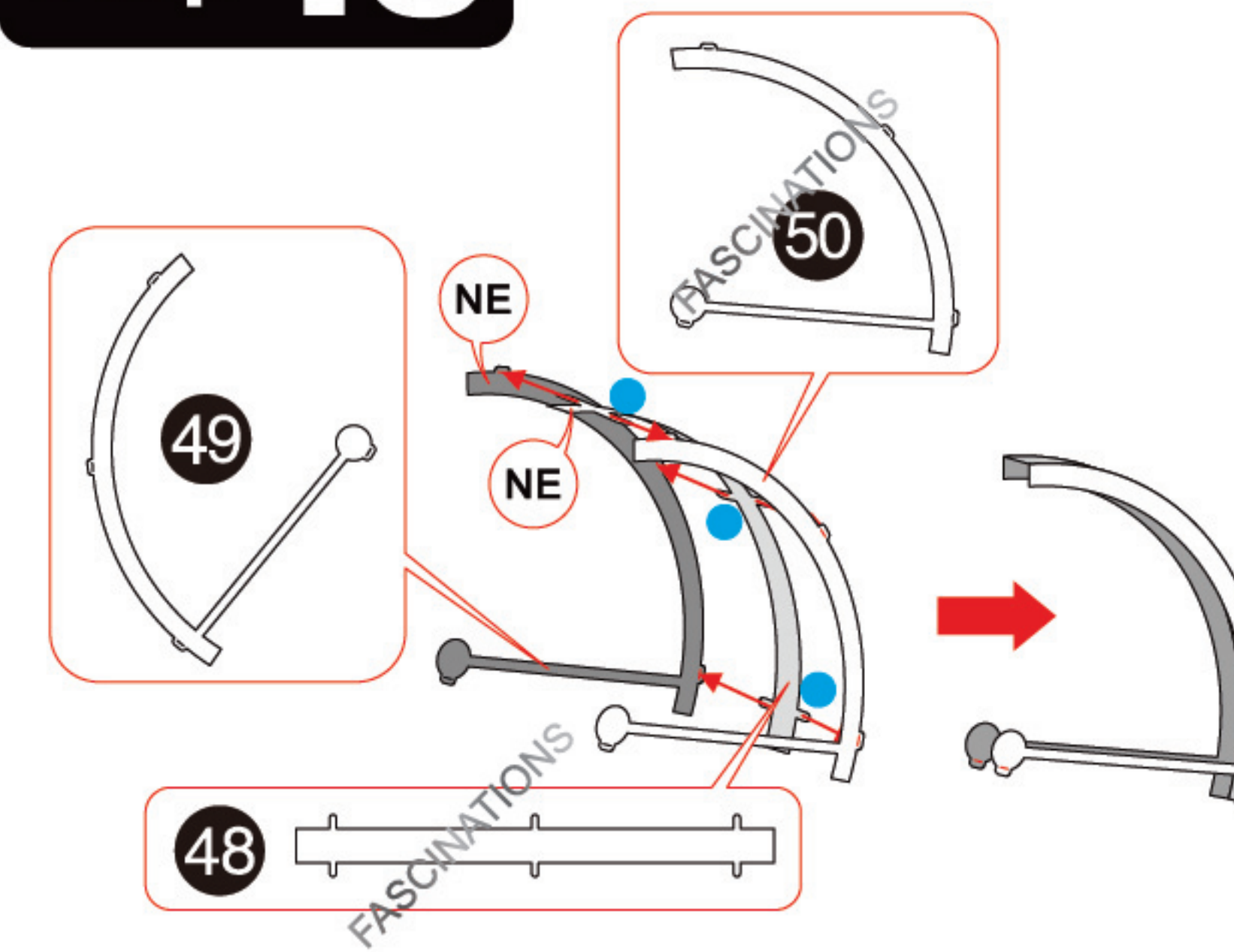
## Step 11



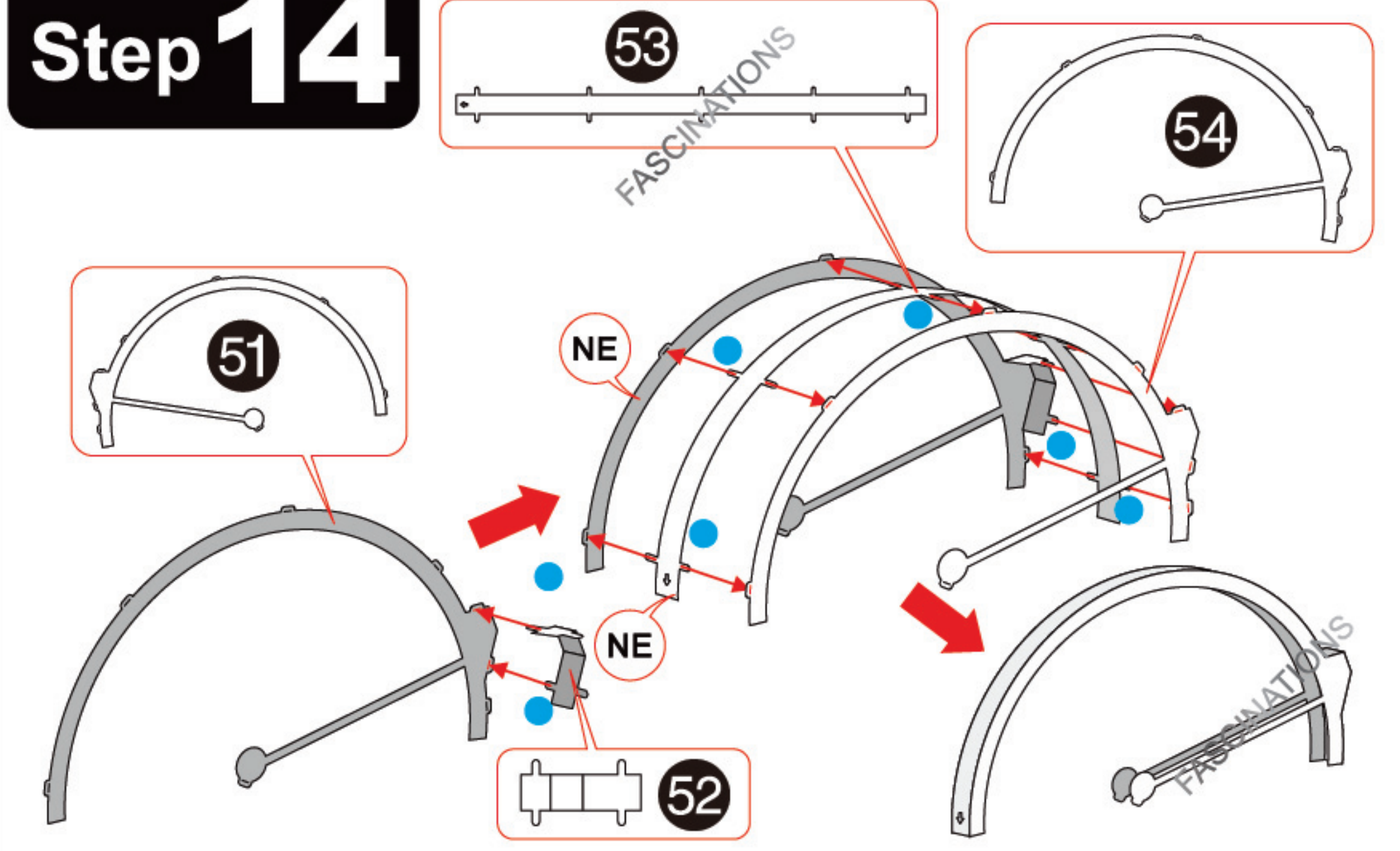
## Step 12



## Step 13



## Step 14



## Step 15

