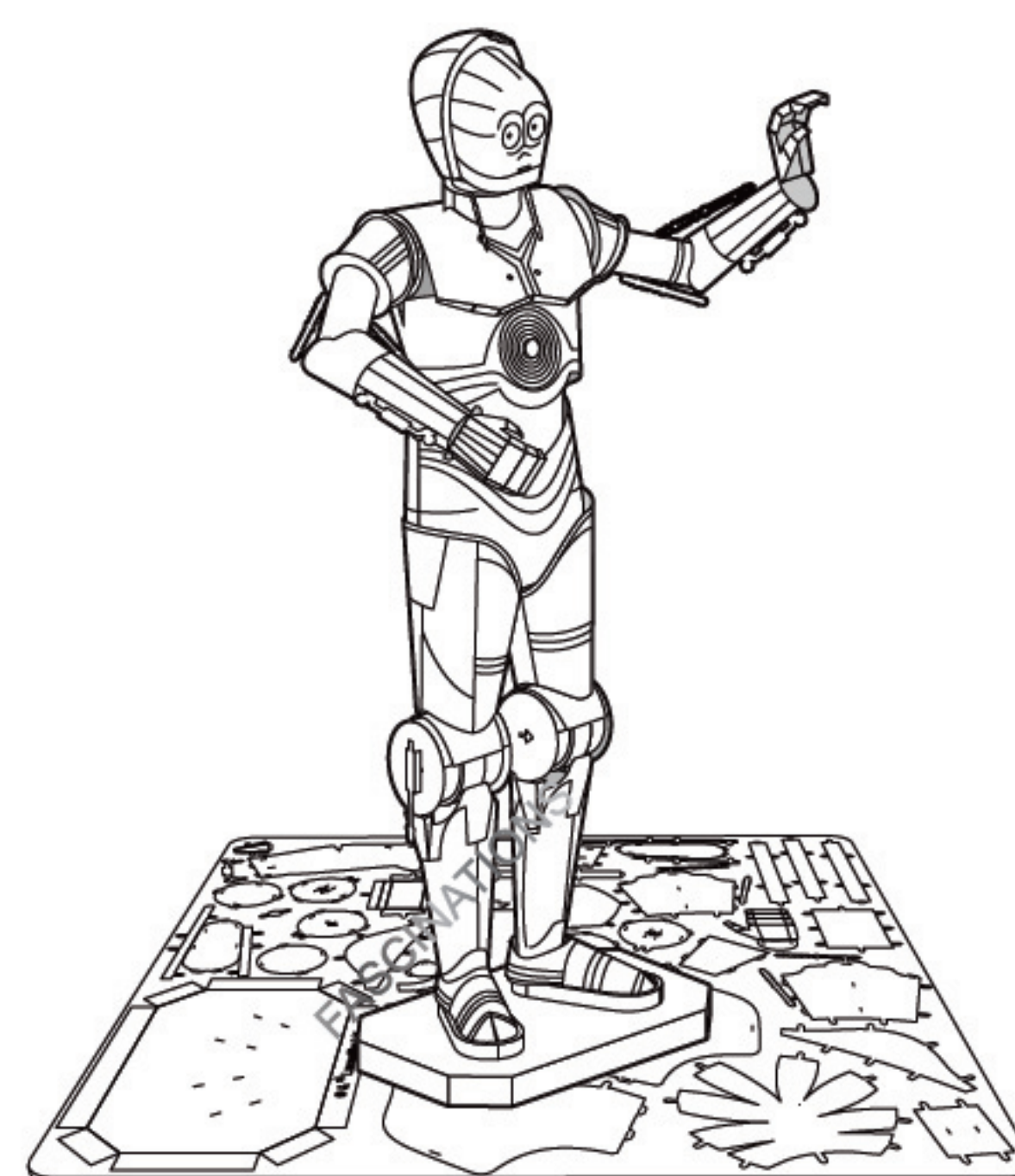




www.starwars.com

© & ™ Lucasfilm Ltd.



C-3PO™

Item No. MMS270

Metal Earth®

3D METAL MODEL KITS

360°  
view



It is highly recommended that you visit  
[www.metal-earth.com/360/mms270](http://www.metal-earth.com/360/mms270)  
to see the completed model before assembling your own

#### Legends:

- E** Engraved side
- NE** Non-engraved side
- Attention point

- Insert tab and bend 90 degrees
- Insert tab and twist 90 degrees

#### Assembly tip:

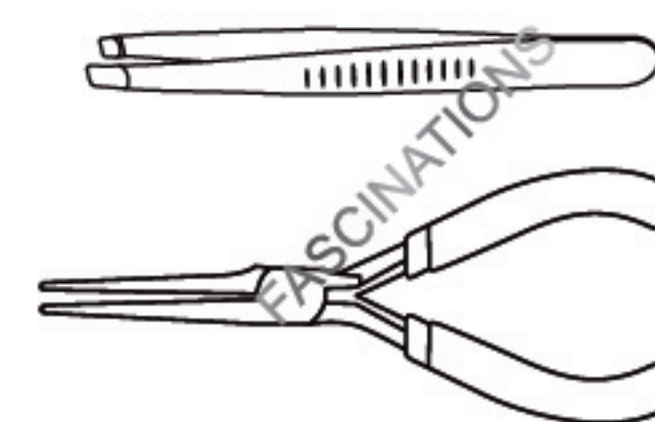
If needed, slightly twist tabs to hold parts together then untwist and bend them down for a nice finish

#### Recommended tools:

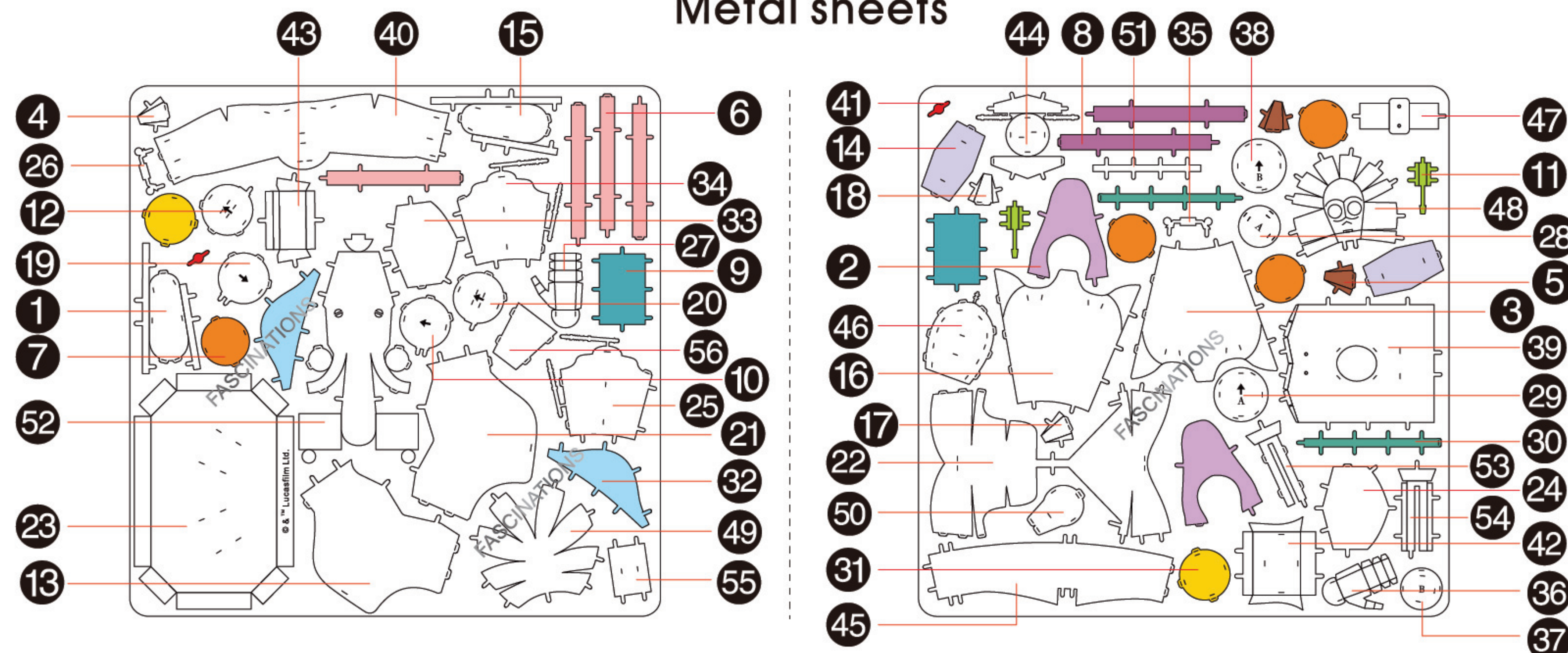
-Wire cutters: helpful for taking parts from the metal sheets.



-Tweezers or needle nose pliers: helpful for folding parts, bending and twisting tabs.

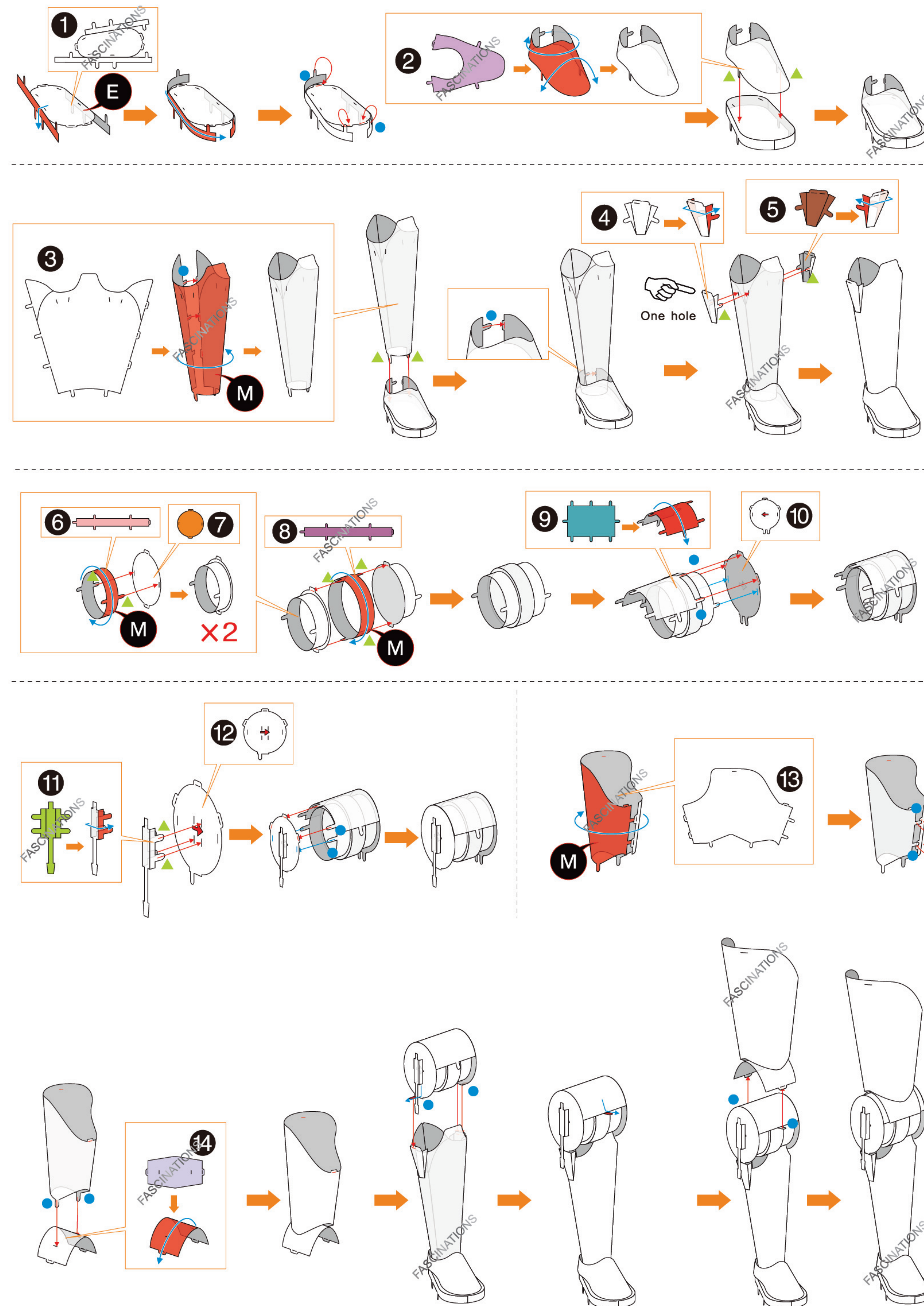


#### Metal sheets

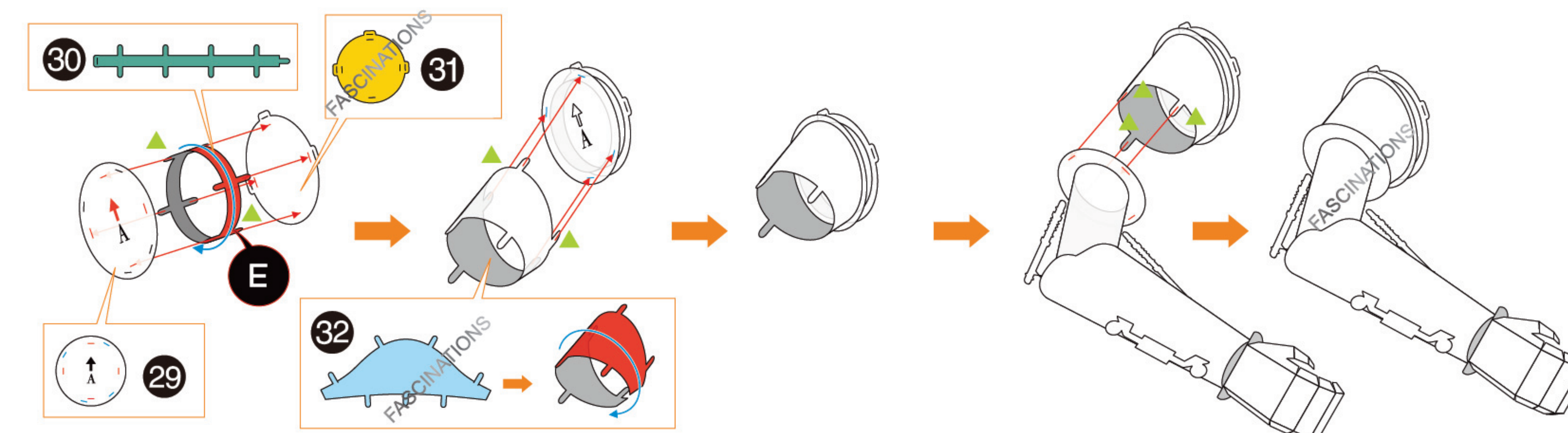
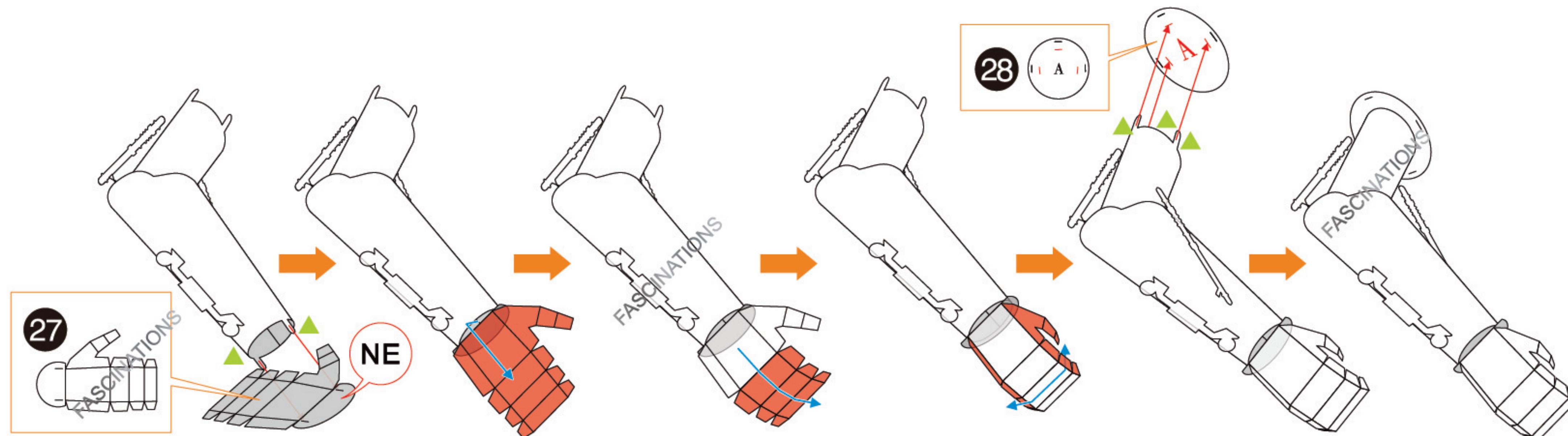
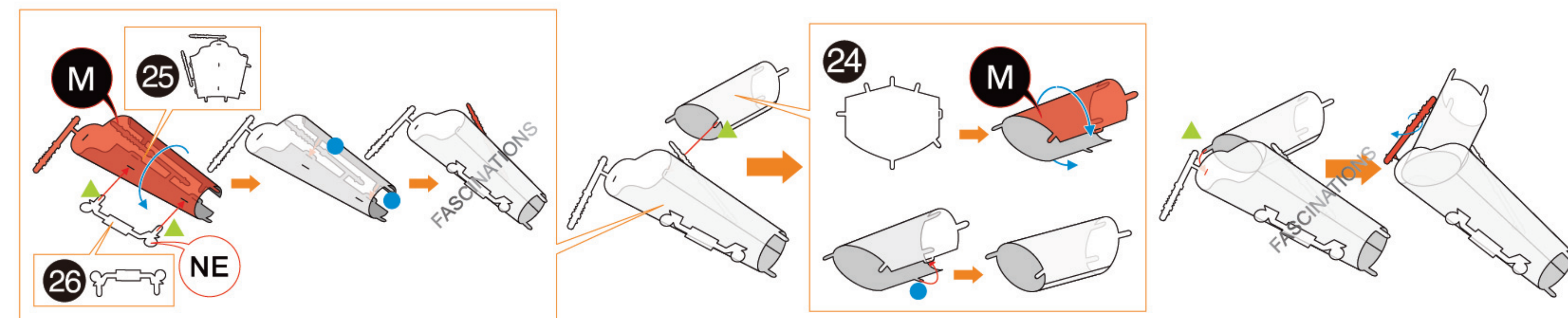
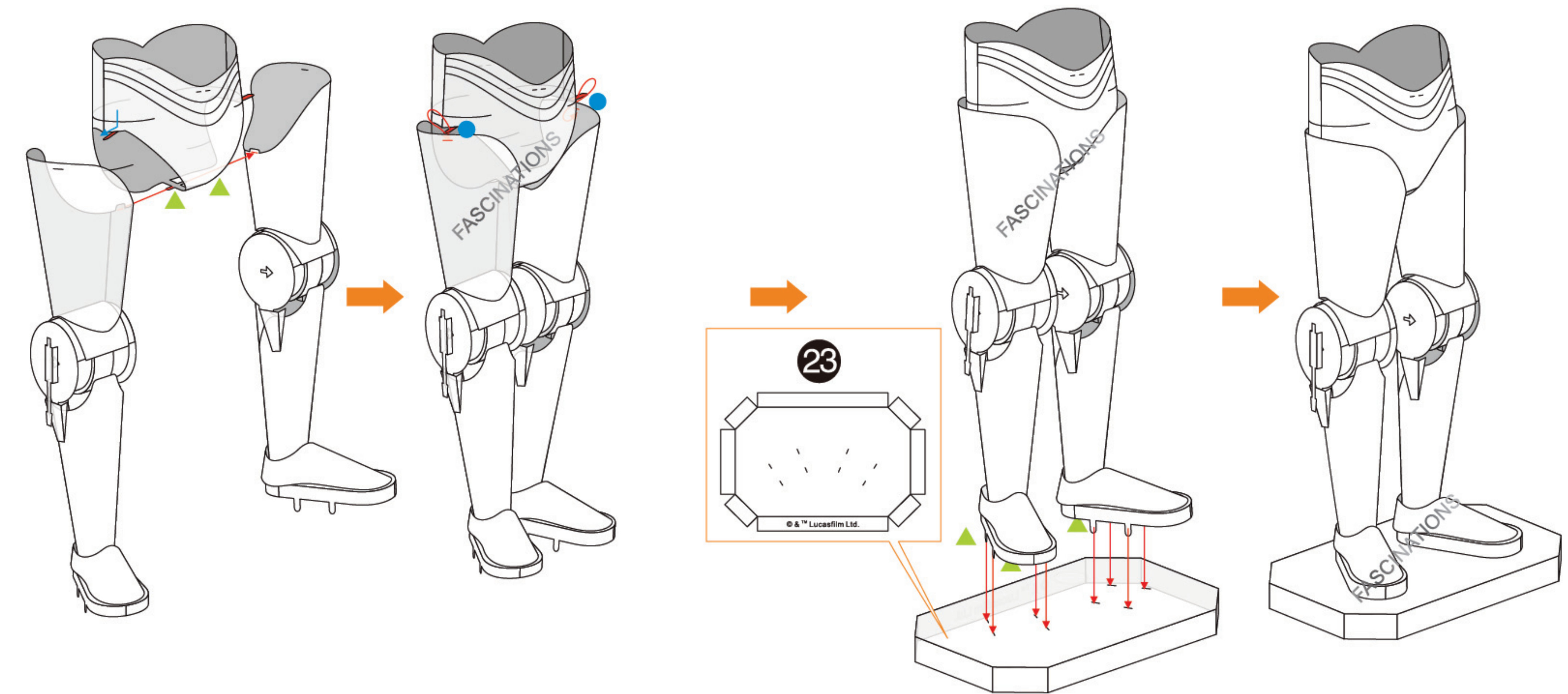
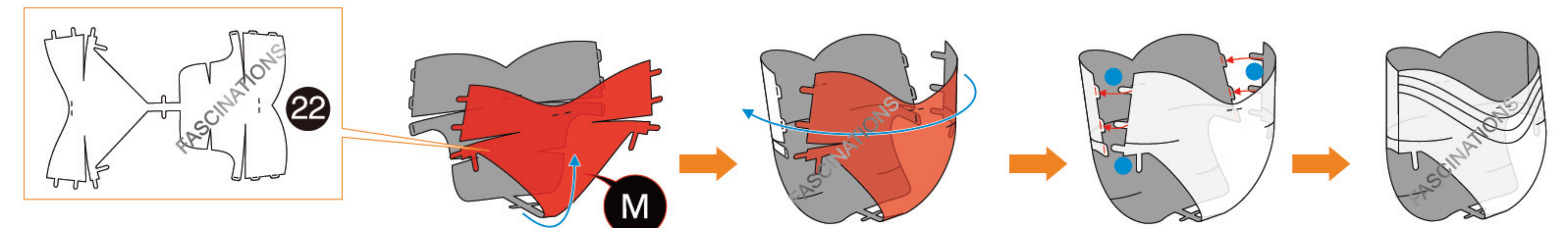
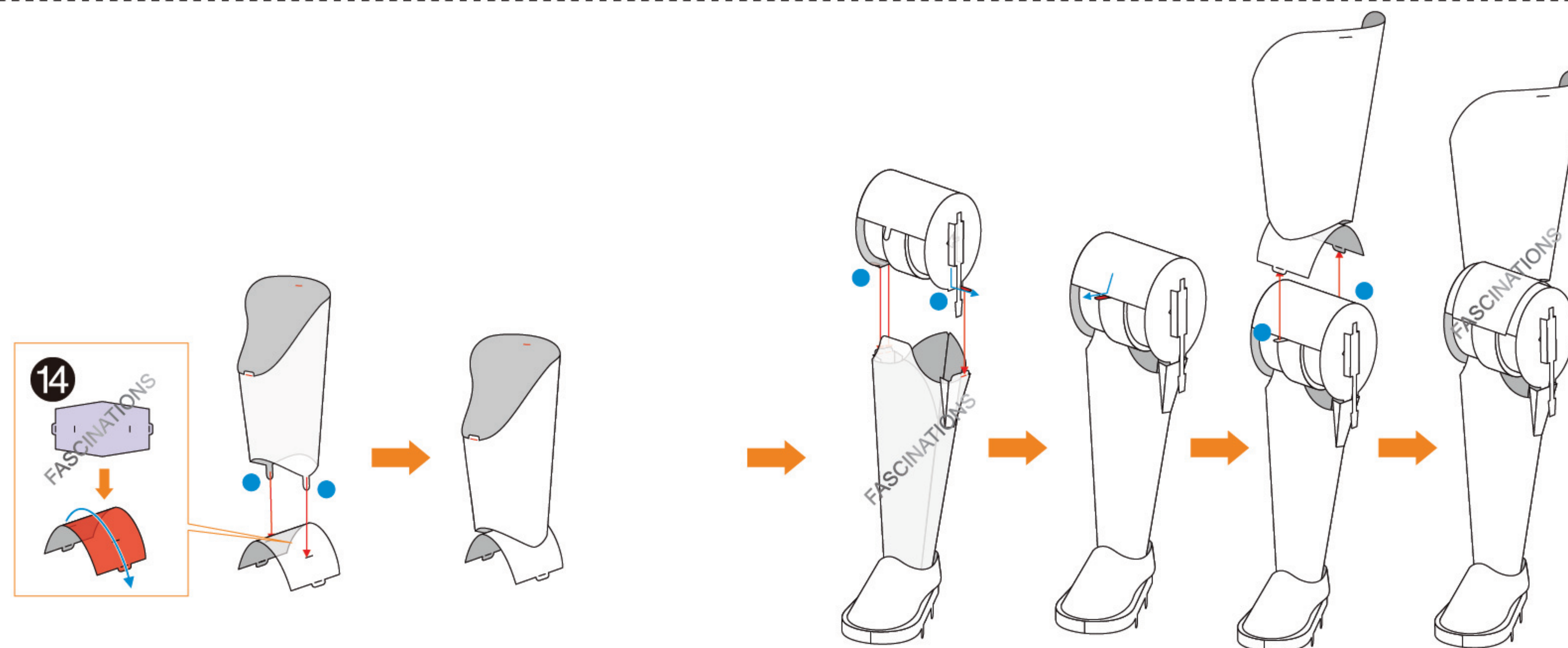
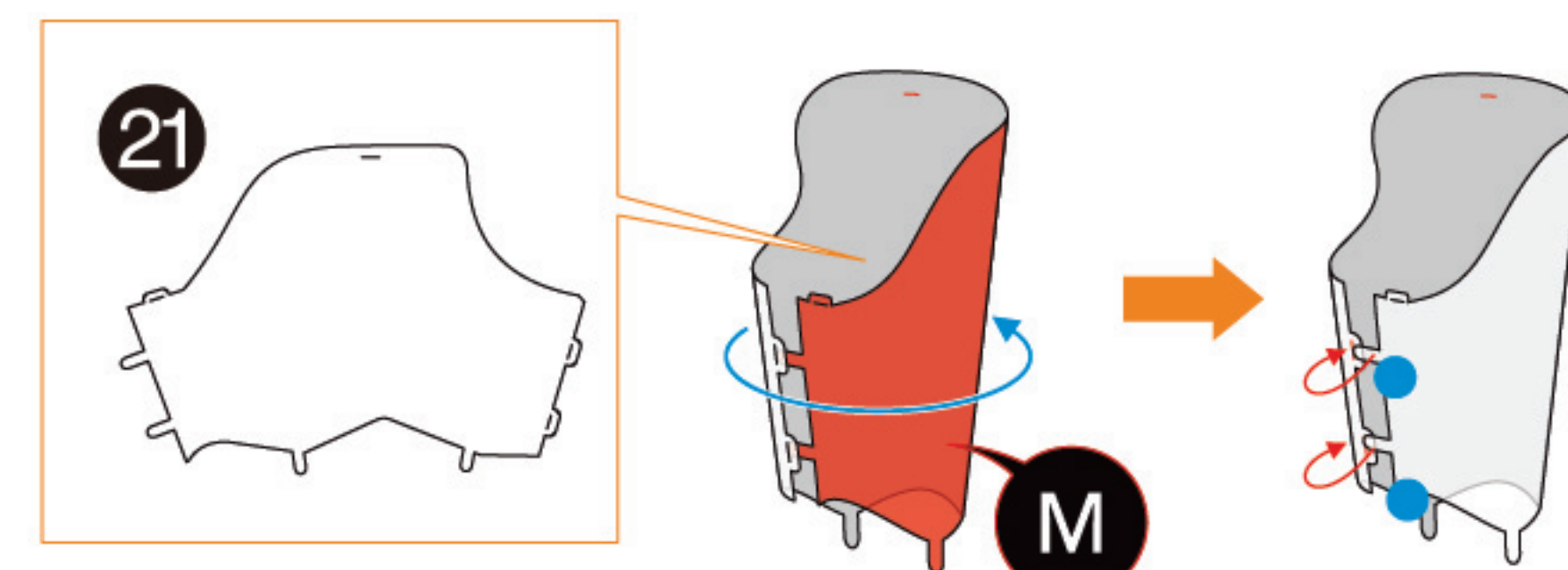
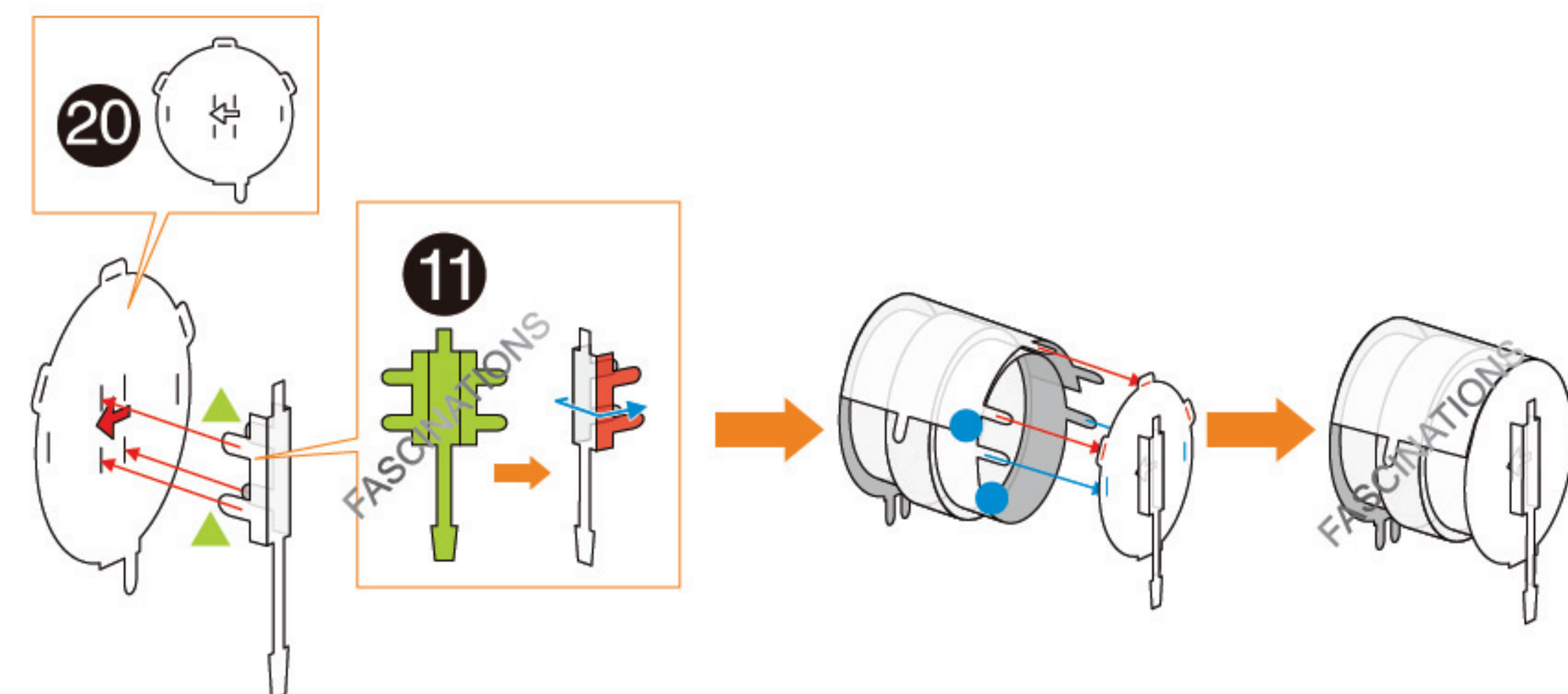
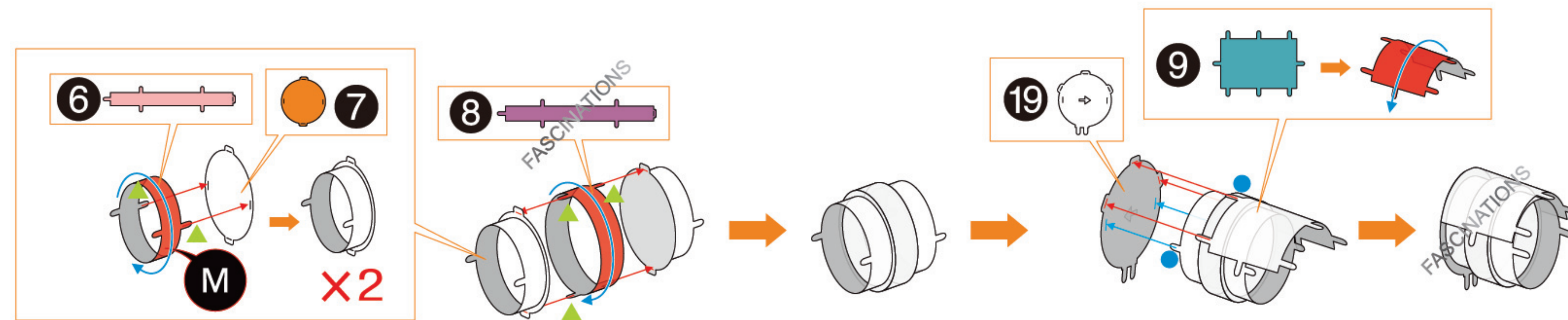
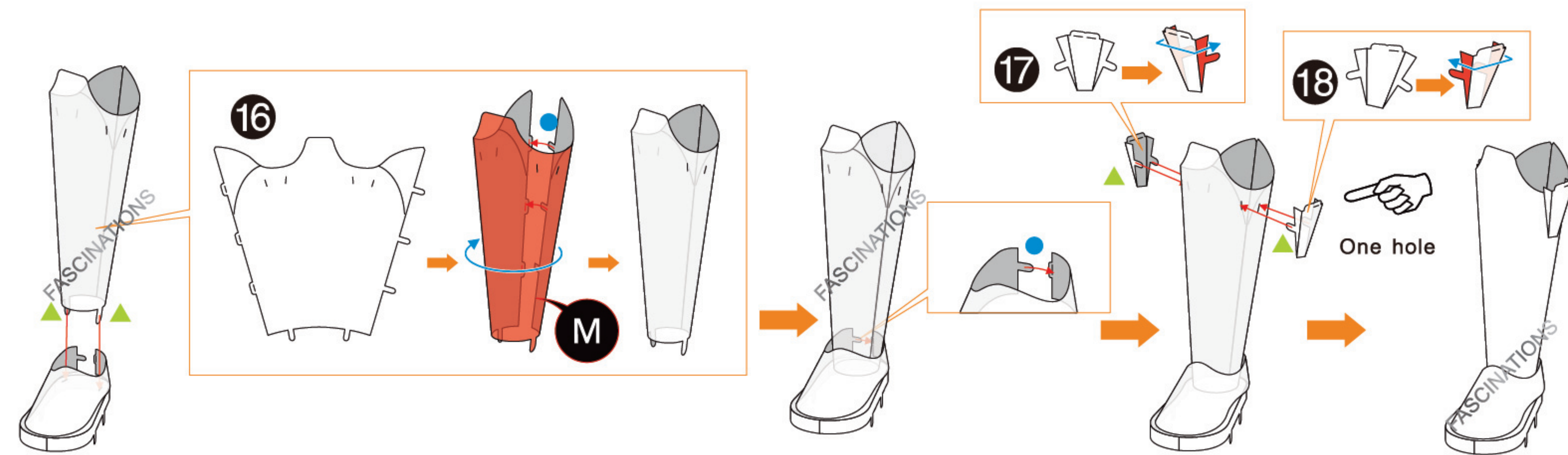
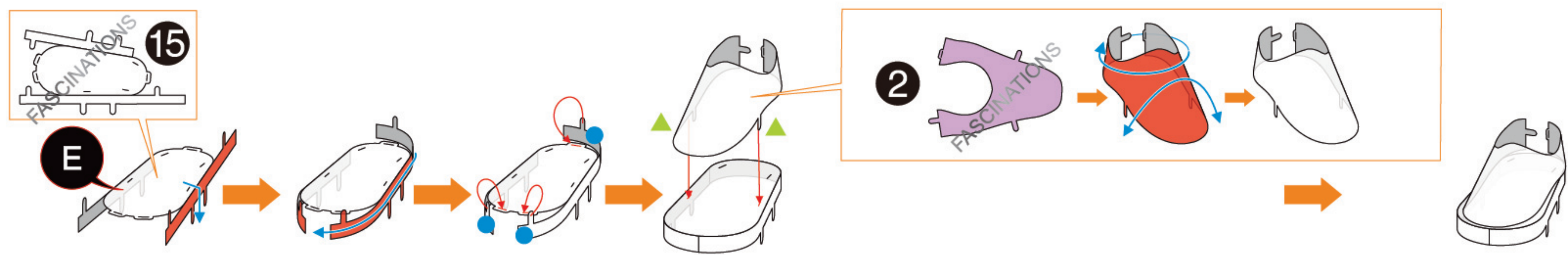


In order to avoid possible injury from sharp edges, please carefully discard the metal sheet after parts have been removed

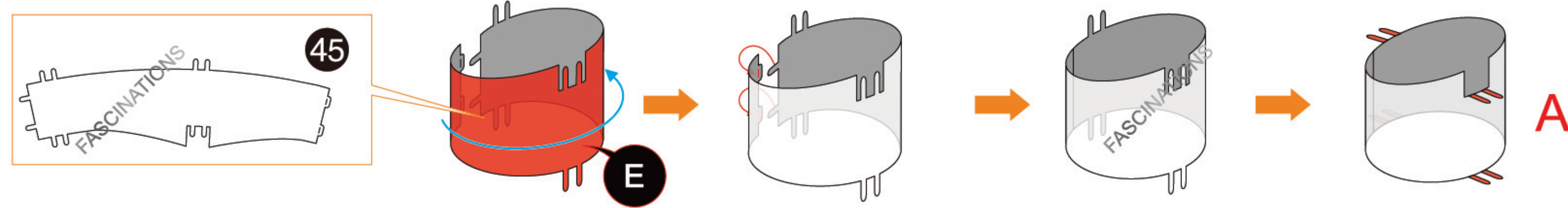
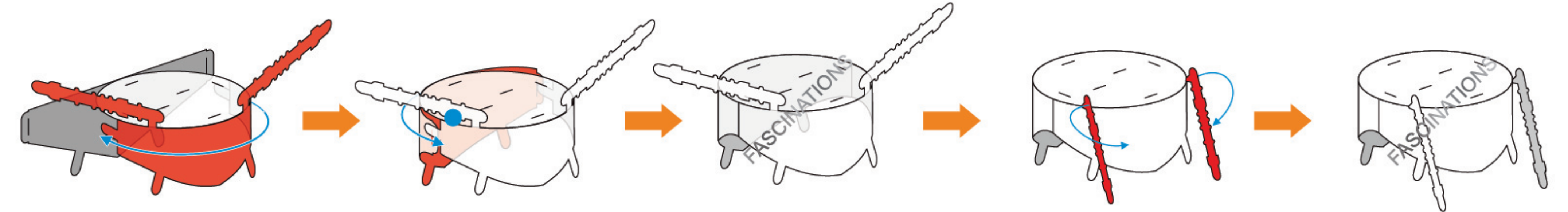
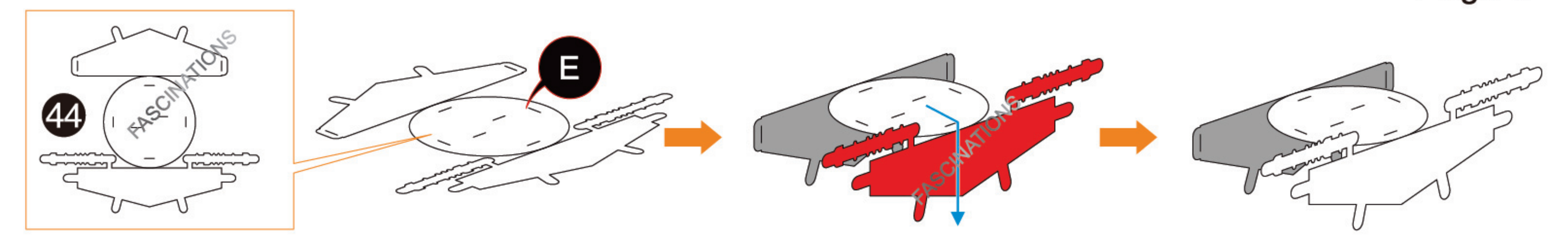
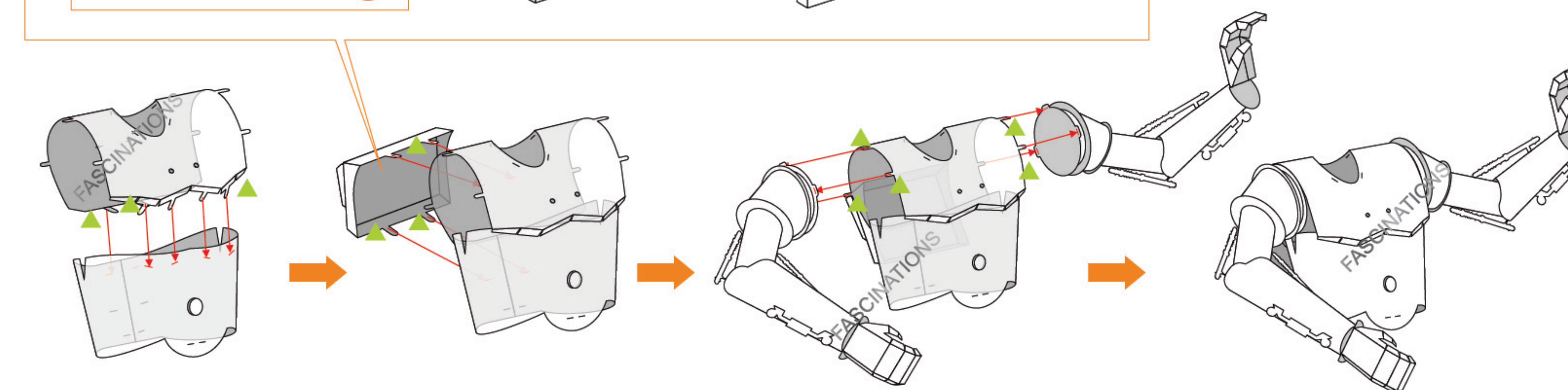
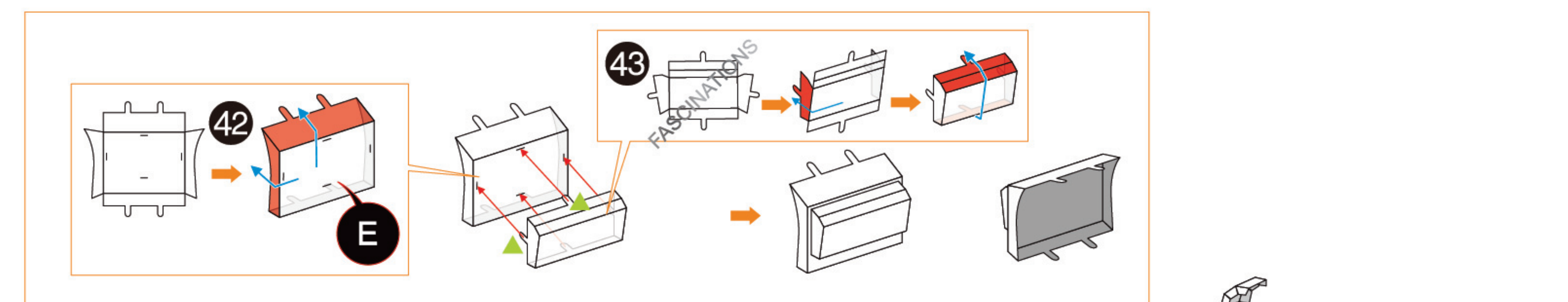
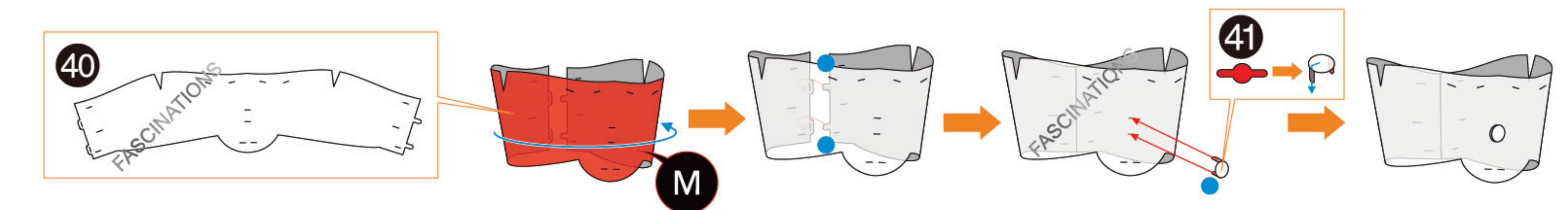
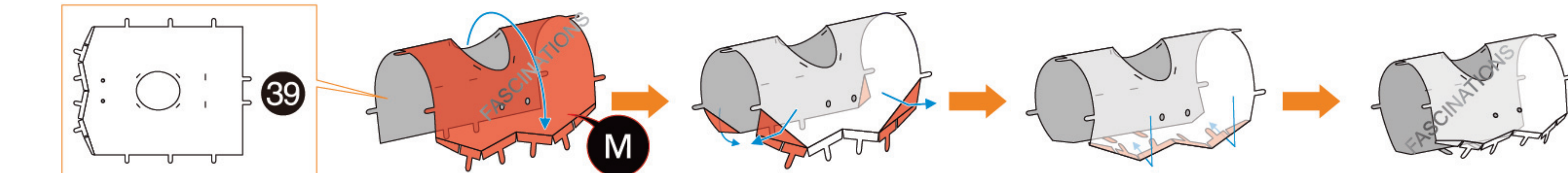
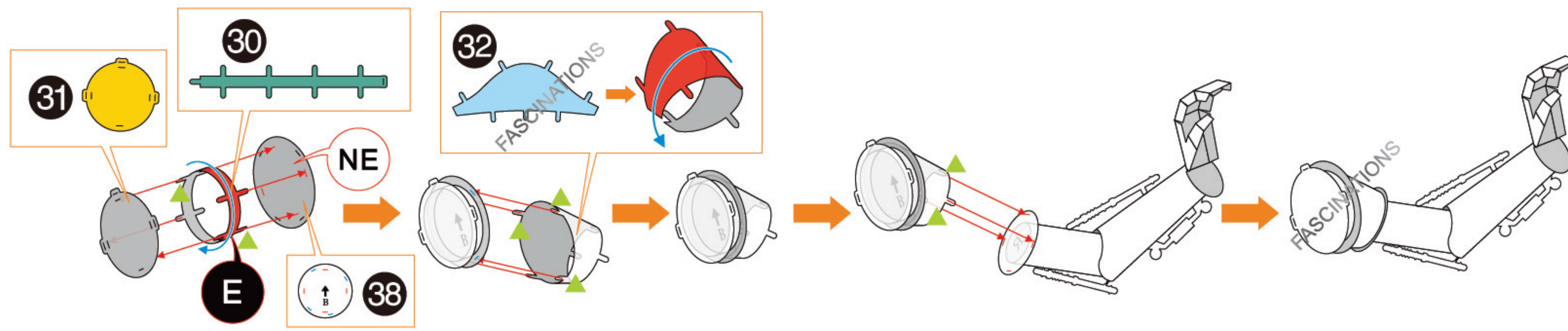
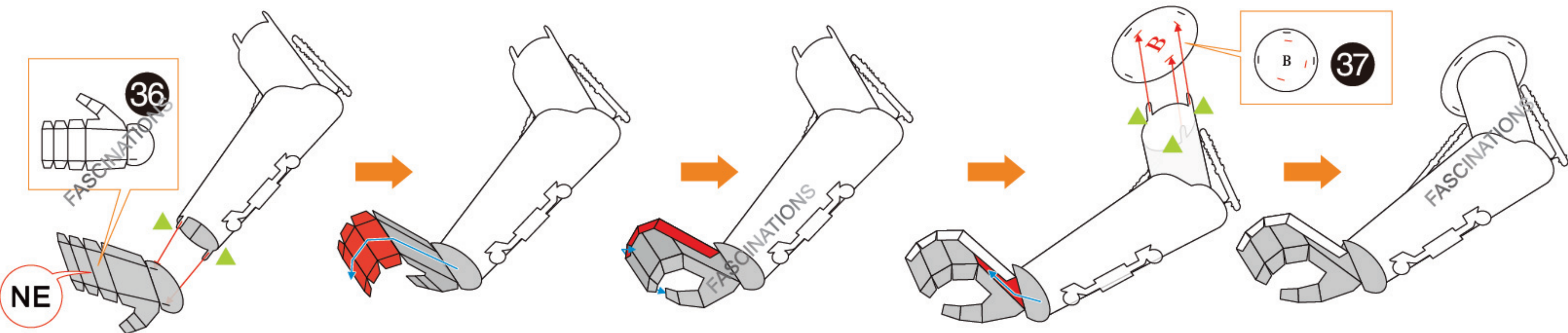
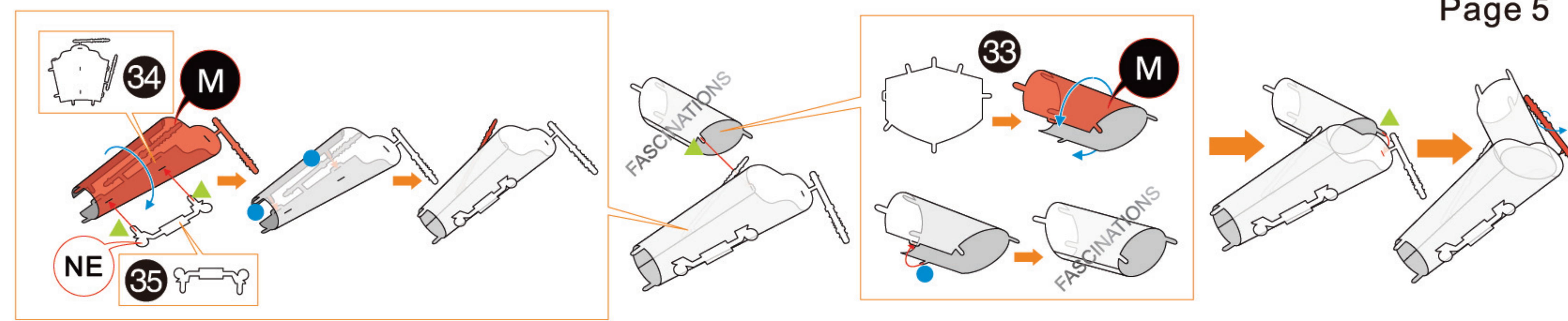
#### Assembly Flow Chart





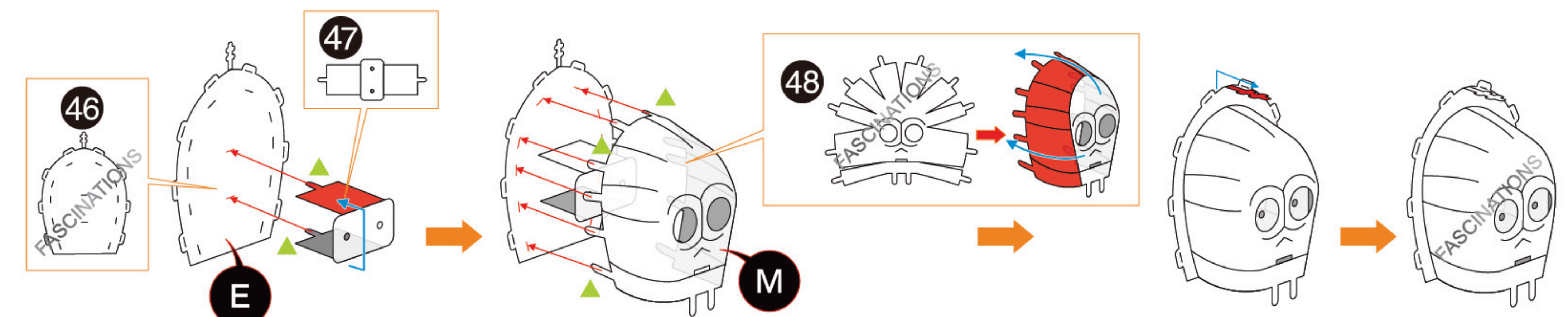




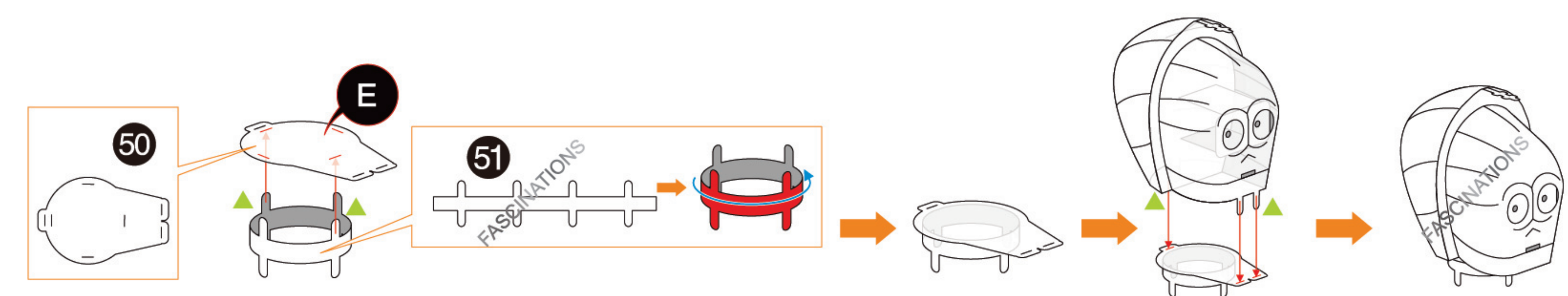
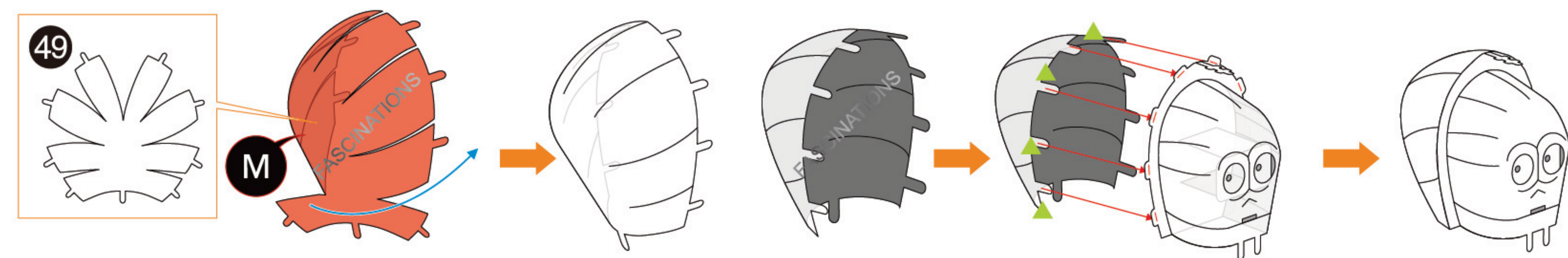


## Display Option 1

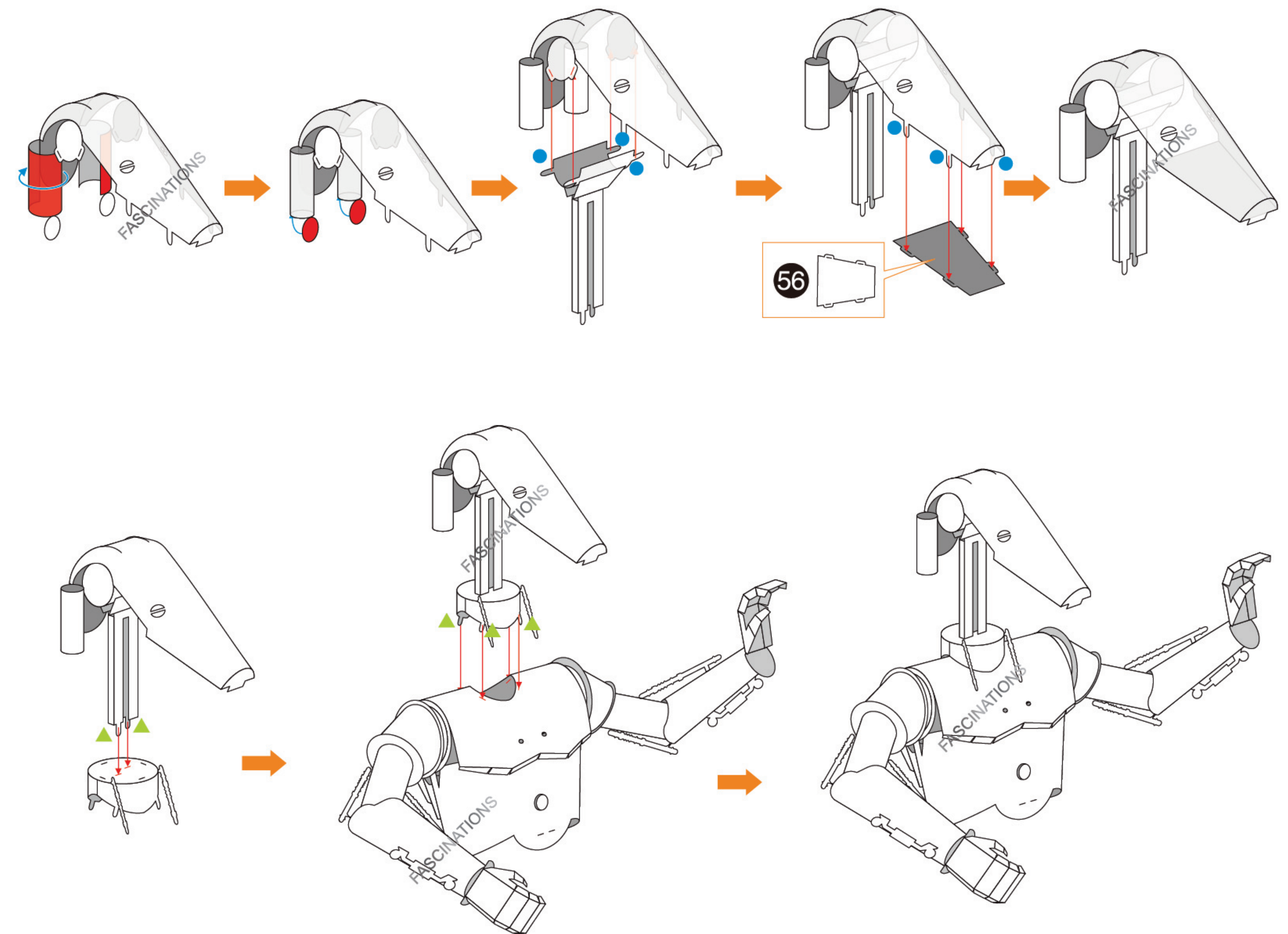
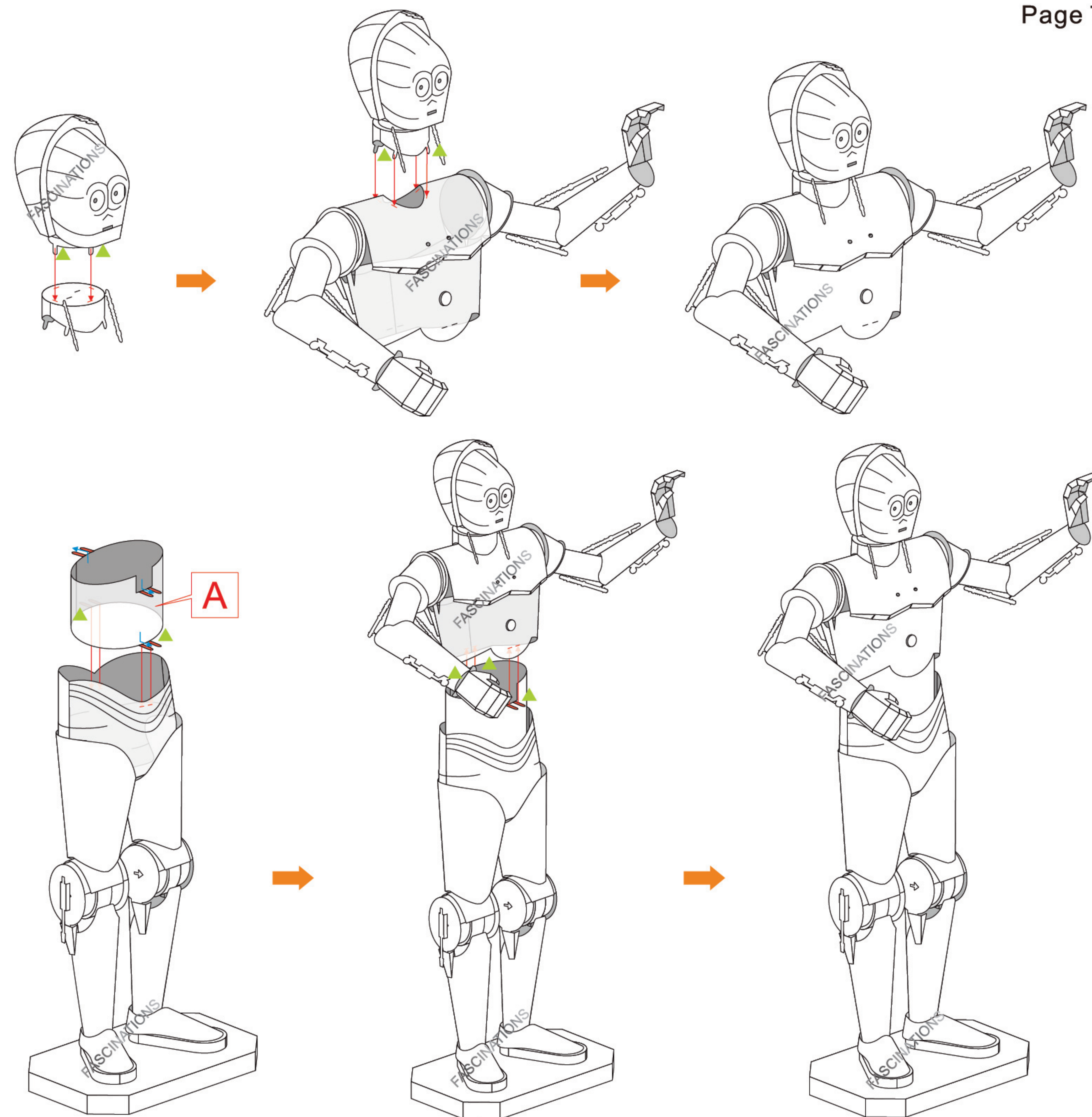
Tip: connect the 2 tabs at the top of the head first



Tip: connect the 2 tabs at the top of the head first







## Display Option 2

