

ICONX



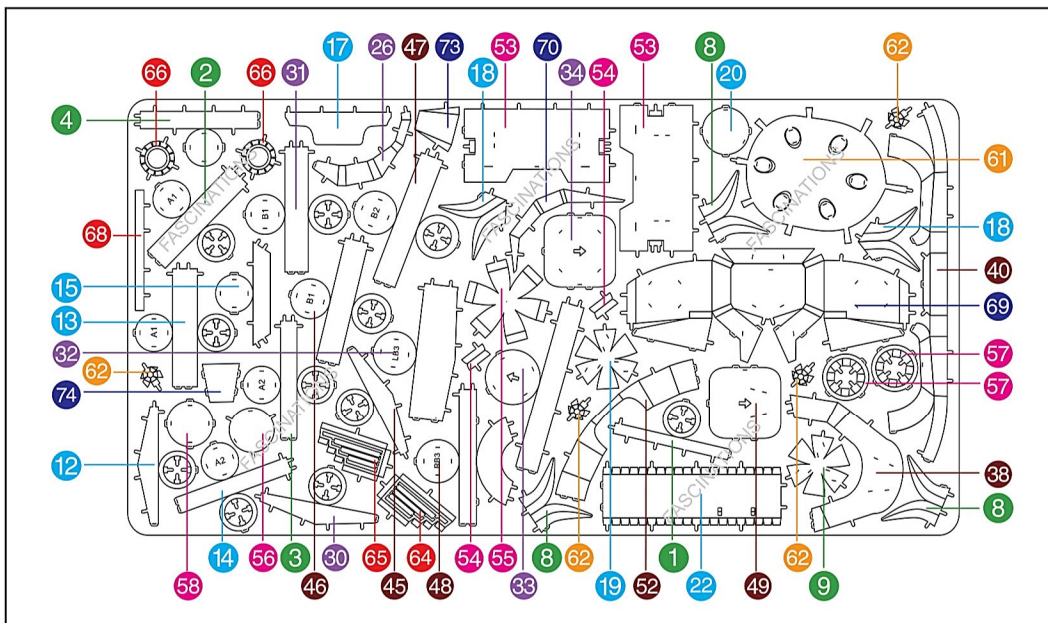
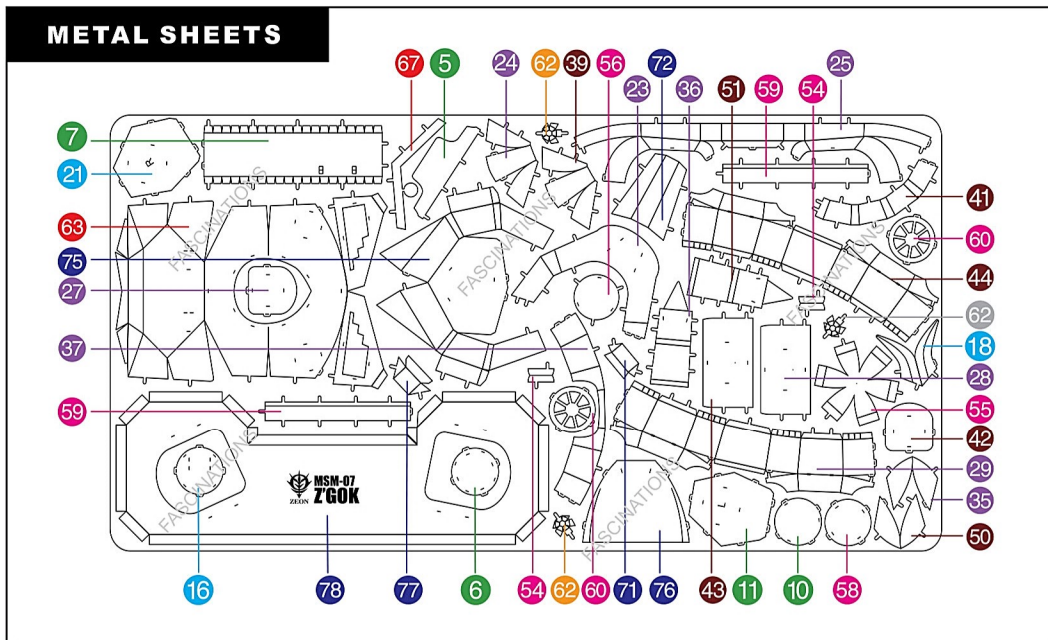
It is highly recommended that you visit www.metalearth.com/360/icx103 to see the completed model before assembling your own

Metal Earth

3D METAL MODEL KITS

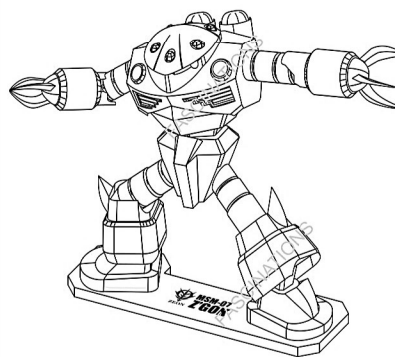
Go to www.metalearth.com/360/icx103 to see the zoomable PDF version of this instruction sheet

METAL SHEETS



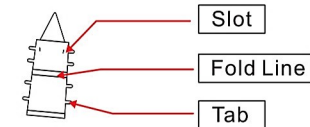
! In order to avoid possible injury from sharp edges, please carefully discard the metal sheet after parts have been removed.

ICX103 MSM-07 Z'GOK



©SOTSU · SUNRISE PLEX 2017 MADE IN CHINA

TO CREATE THE BEST CONNECTIONS



Legends:

- E** Engraved side
- NE** Non-engraved side
- Attention point
- Insert tab and bend 90 degrees
- Insert tab and twist 90 degrees

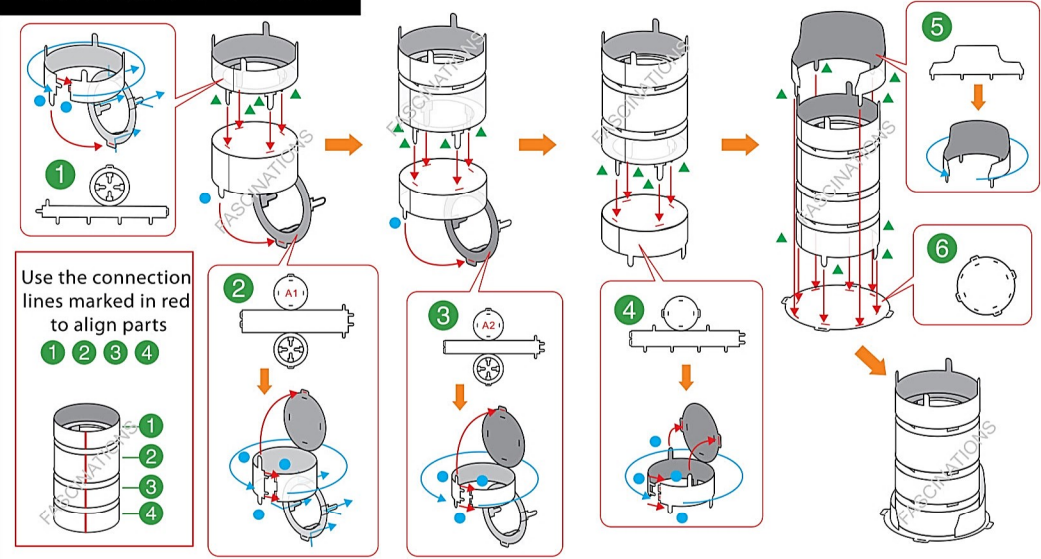
Recommended tools:

- Wire cutters: helpful for taking parts from the metal sheets.
-
- Tweezers or needle nose pliers: helpful for folding parts, bending and twisting tabs.
-

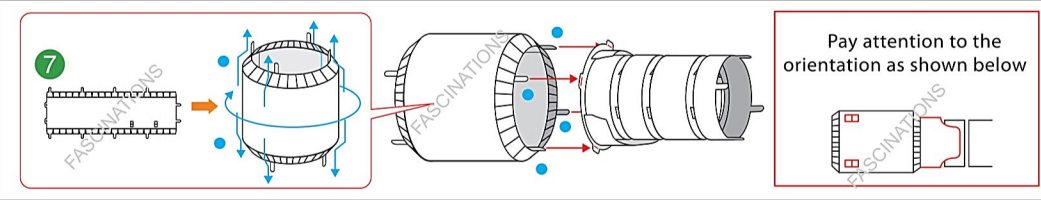
Assembly tip:

If needed, slightly twist tabs to hold parts together then untwist and bend them down for a nice finish.

ASSEMBLY STEPS



Use the connection lines marked in red to align parts
1 2 3 4



Pay attention to the orientation as shown below

