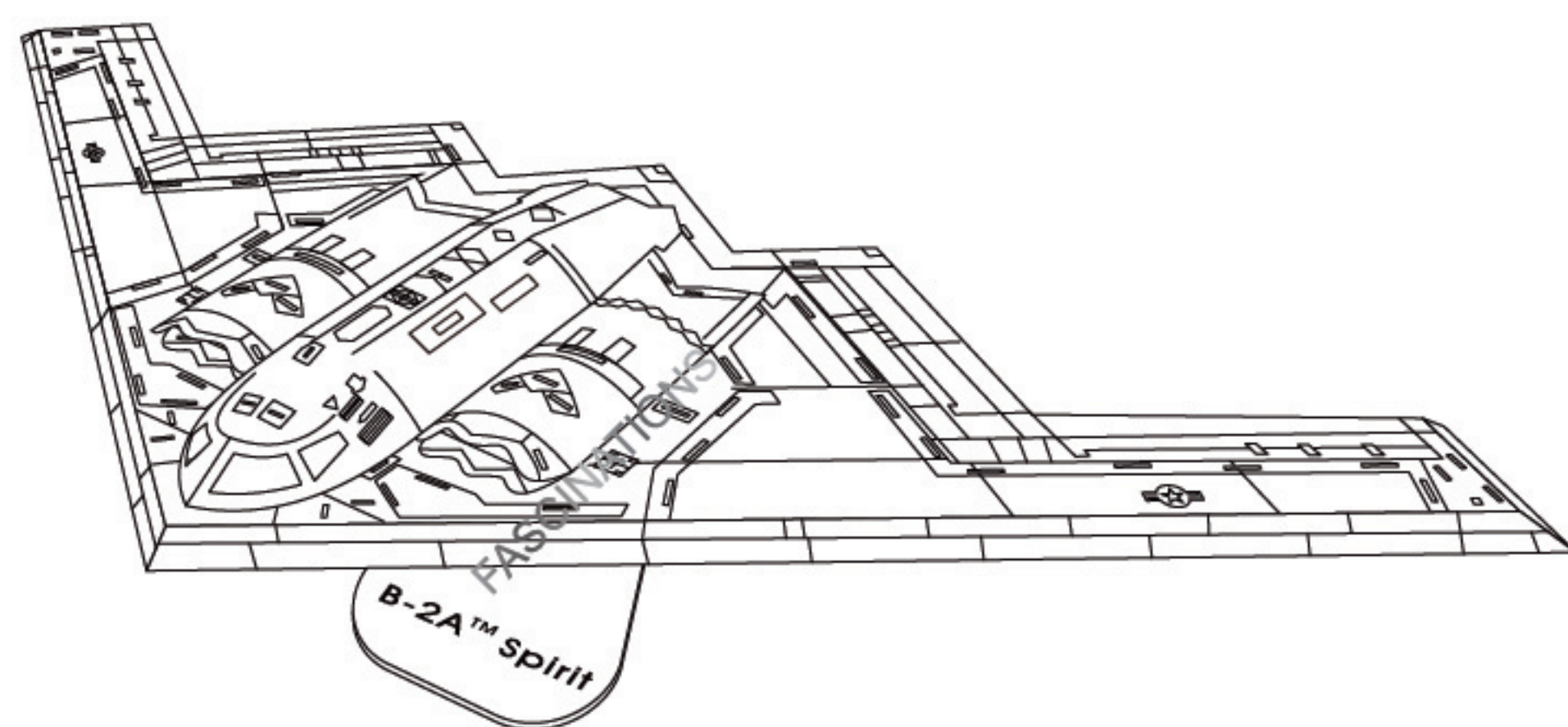
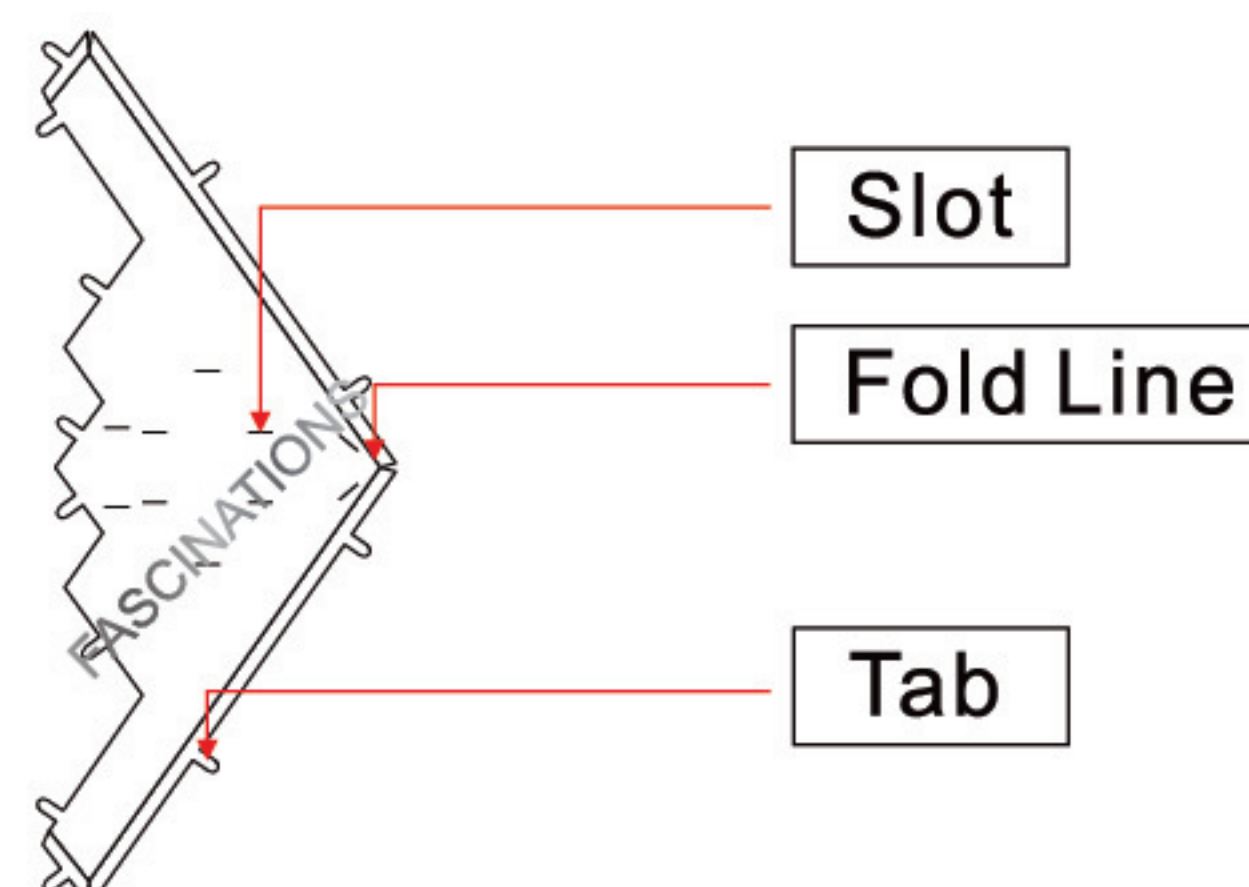


ICX113

B-2A™ Spirit



TO CREATE THE BEST CONNECTIONS



Legends:

- Engraved side
- Non-engraved side
- Attention point
- Insert tab and bend 90 degrees
- Insert tab and twist 90 degrees

Assembly tip:

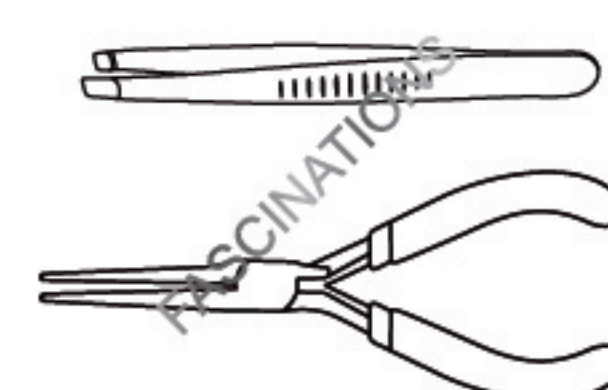
If needed, slightly twist tabs to hold parts together then untwist and bend them down for a nice finish

Recommended tools:

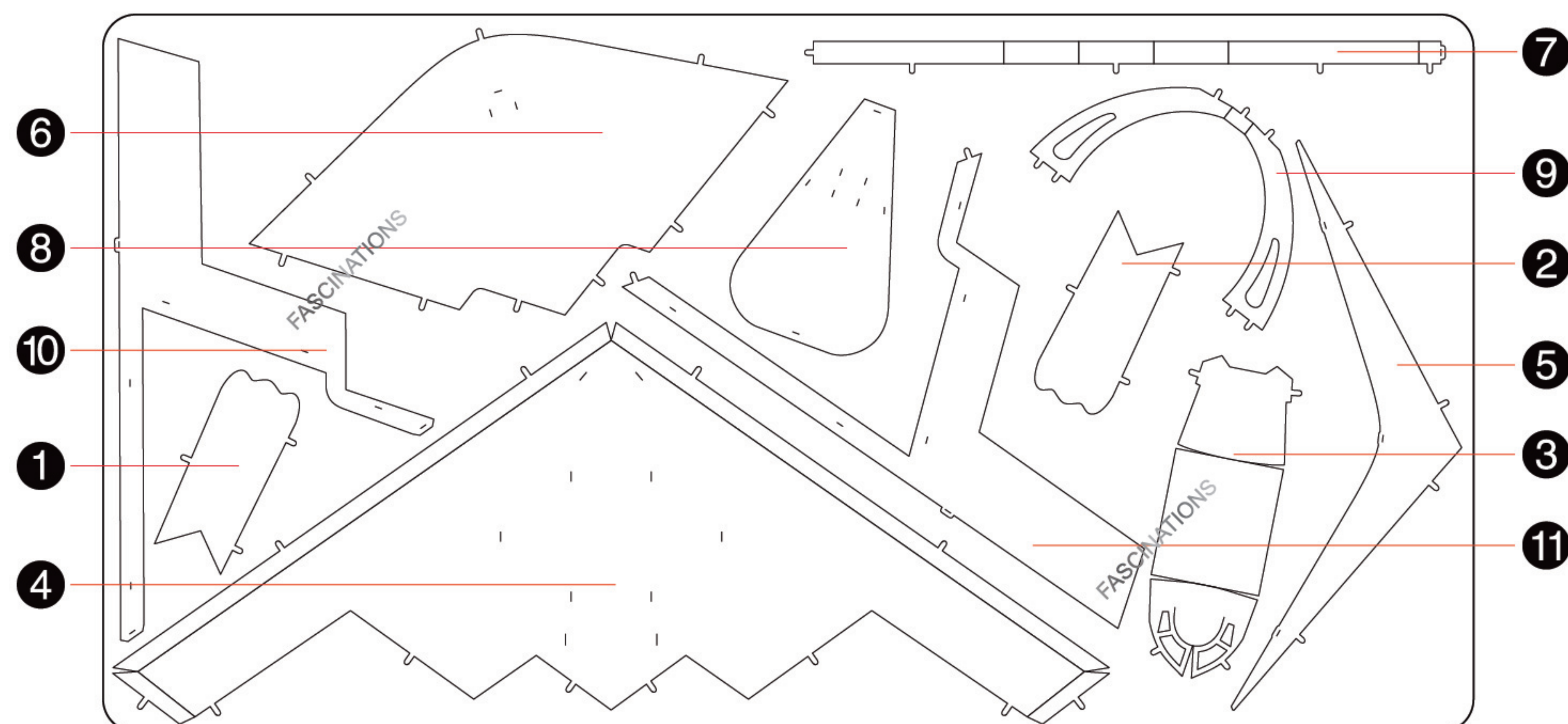
-Wire cutters: helpful for taking parts from the metal sheets.



-Tweezers or needle nose pliers: helpful for folding parts, bending and twisting tabs.



METAL SHEET



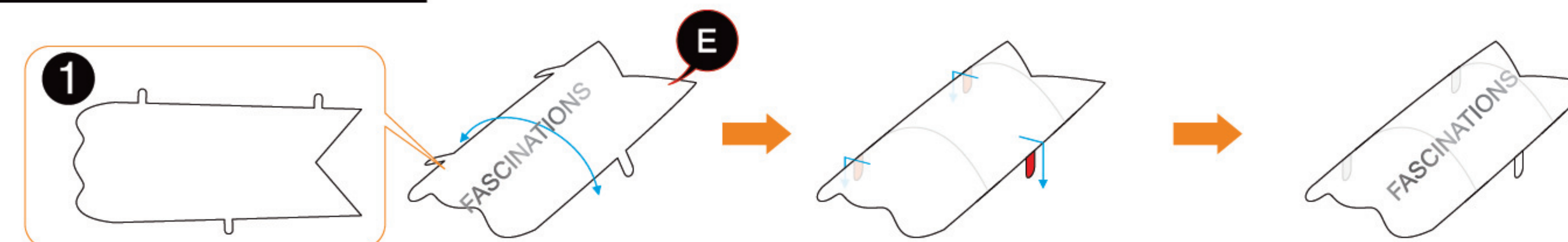
In order to avoid possible injury from sharp edges, please carefully discard the metal sheet after parts have been removed.



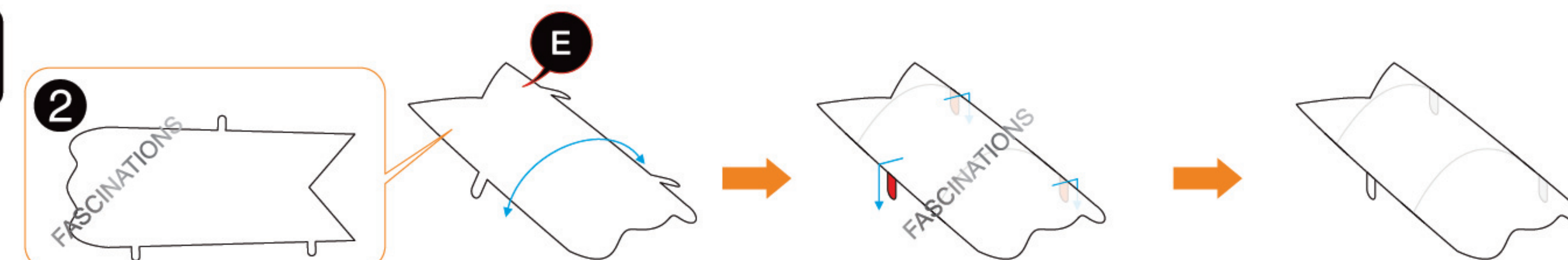
Go to www.fascinations.com/iconx360/icx113 to see the zoomable PDF version of this instruction sheet

ASSEMBLY STEPS

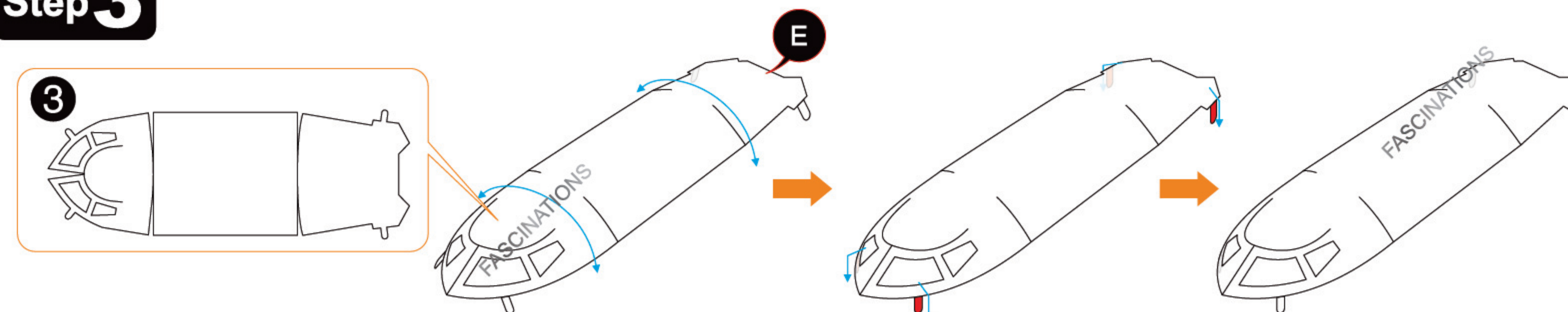
Step 1



Step 2



Step 3



Step 4

