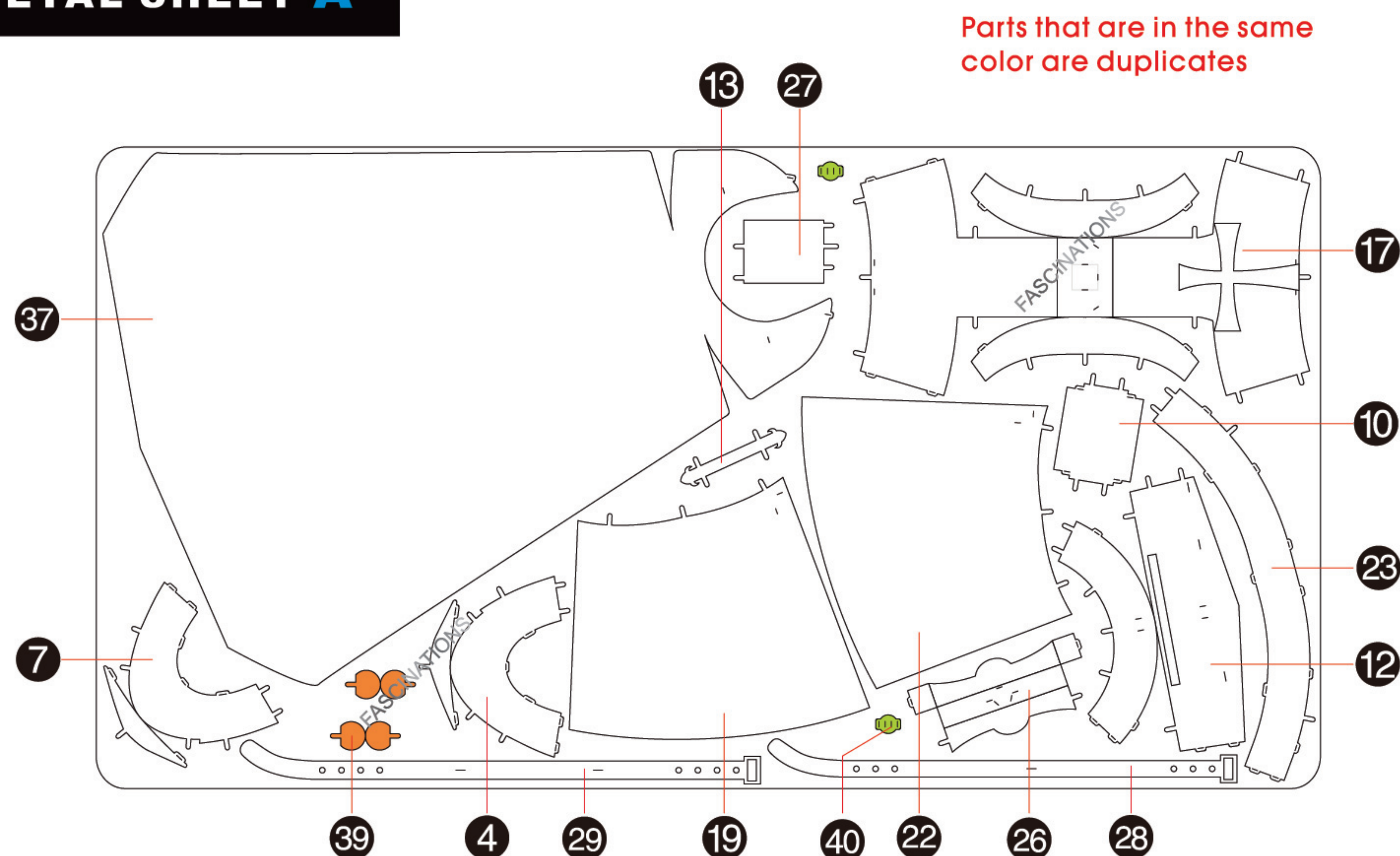


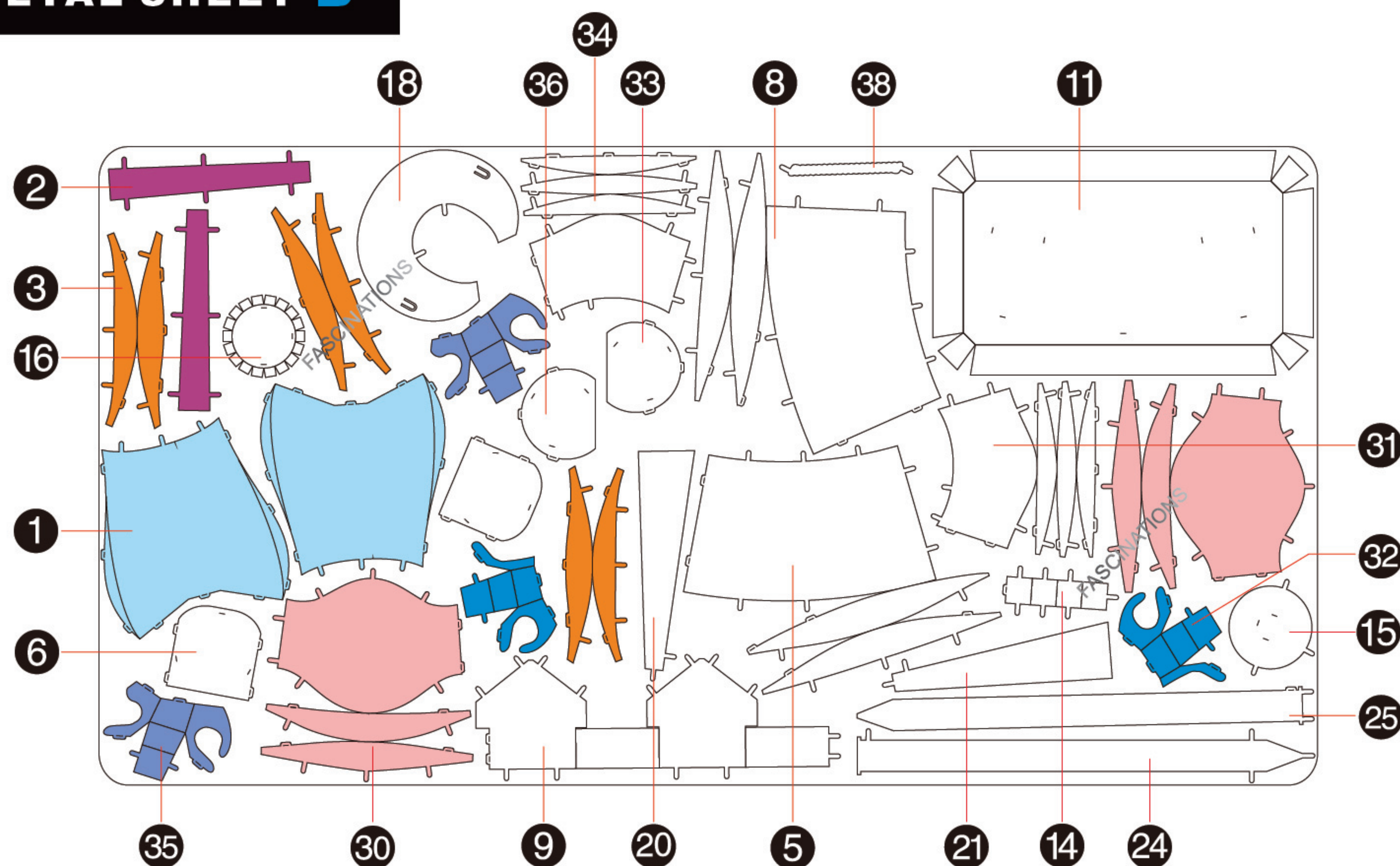


It is highly recommended that you visit
www.metal-earth.com/360/icx116
 to see the completed model before assembling your own

METAL SHEET A



METAL SHEET B



In order to avoid possible injury from sharp edges, please carefully discard the metal sheets after parts have been removed



Go to www.metal-earth.com/360/icx116 to see the zoomable PDF version of this instruction sheet

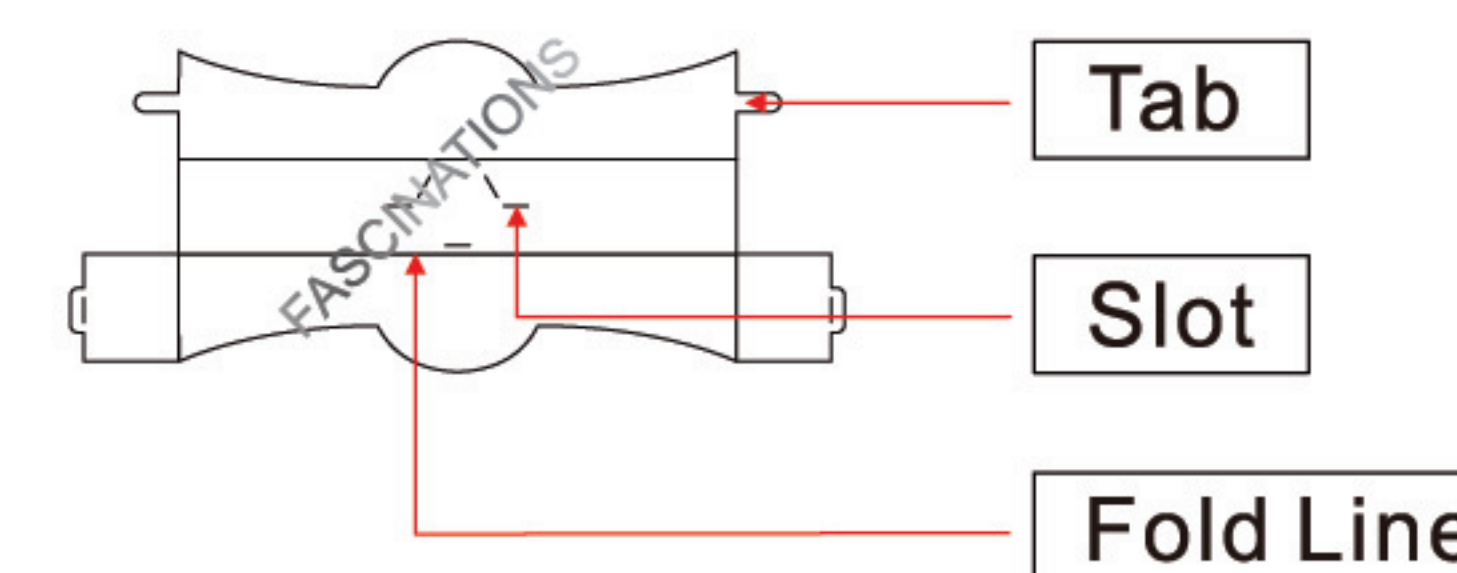
ICX116



Templar Knight



TO CREATE THE BEST CONNECTIONS



Legends:

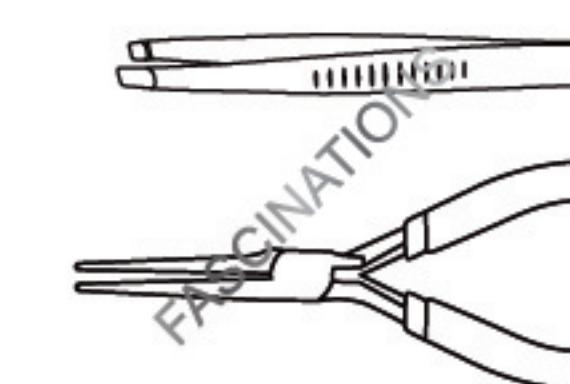
- E** Engraved/Color side
- NE** Non-engraved/Silver side
- Attention point
- Insert tab and bend 90 degrees
- Insert tab and twist 90 degrees

Recommended tools:

-Wire cutters: helpful for taking parts from the metal sheets.



-Tweezers or needle nose pliers: helpful for folding parts, bending and twisting tabs.

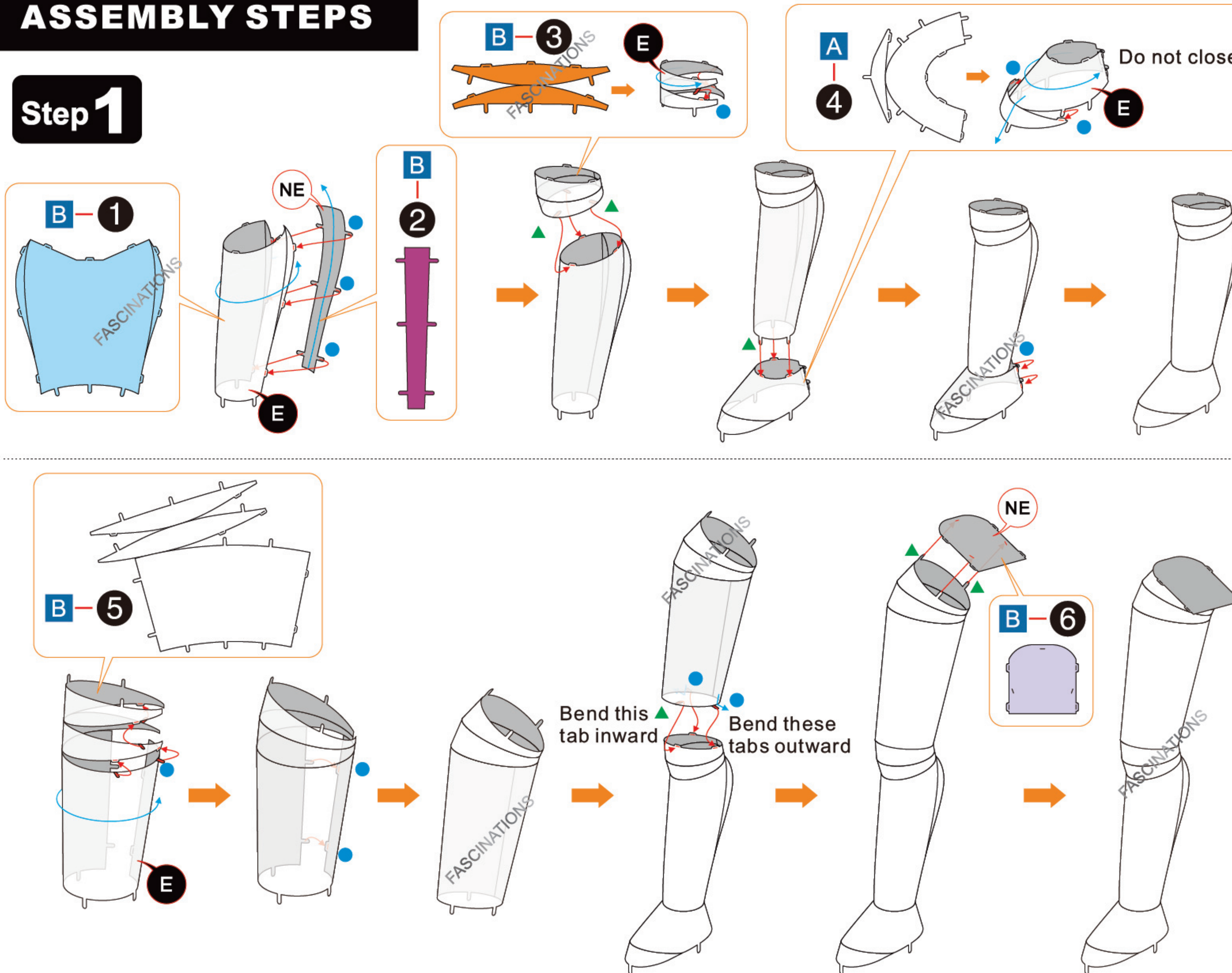


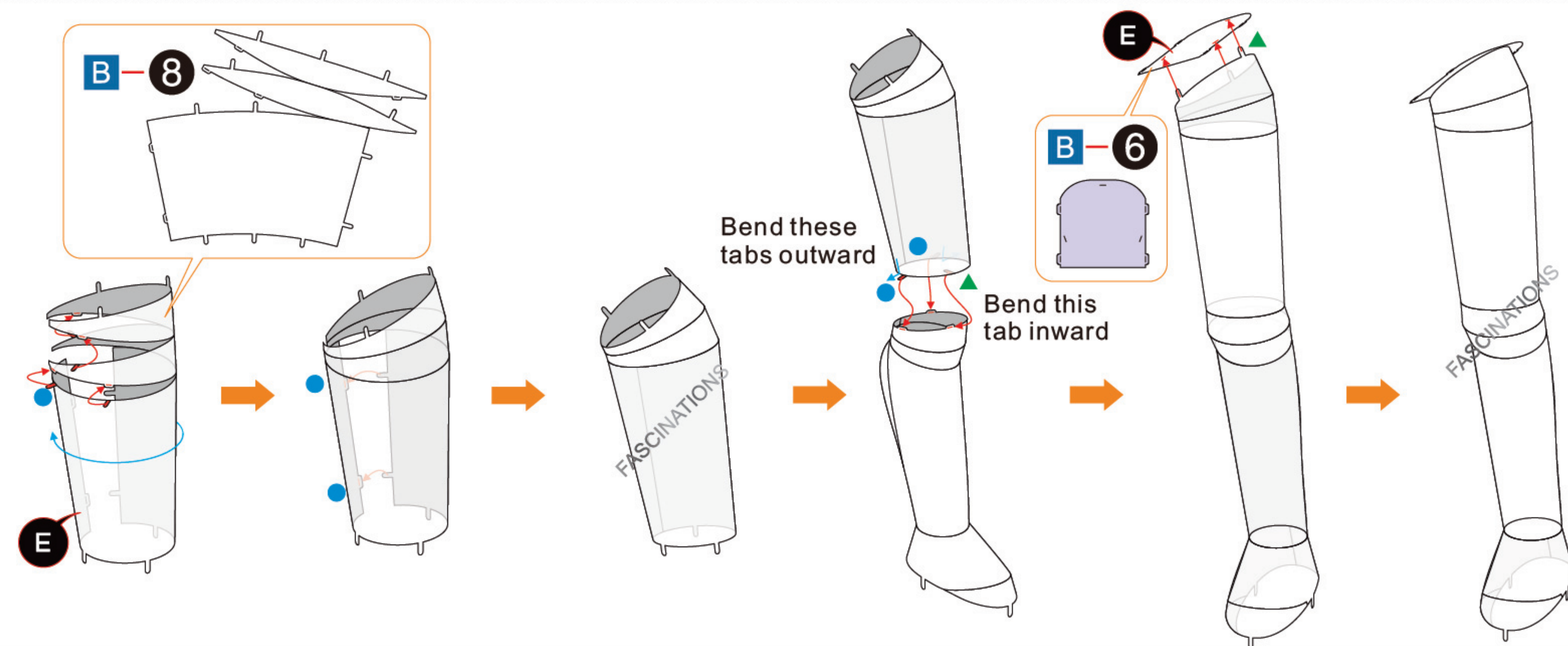
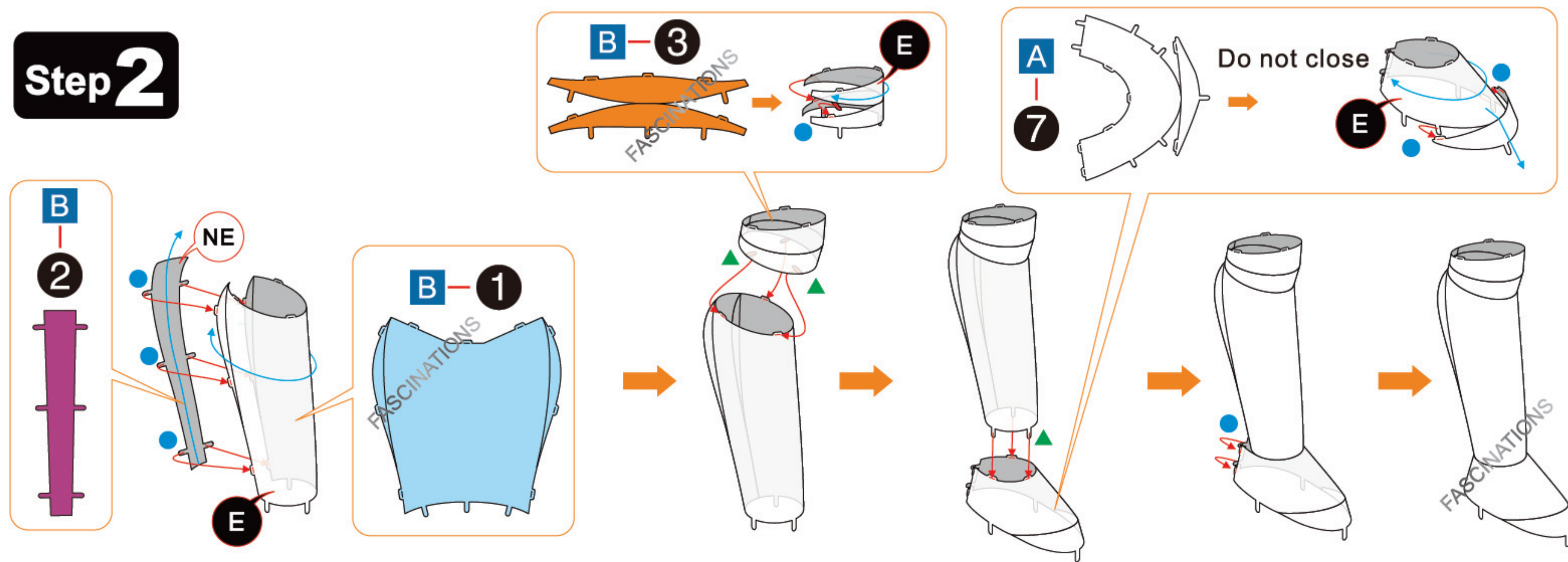
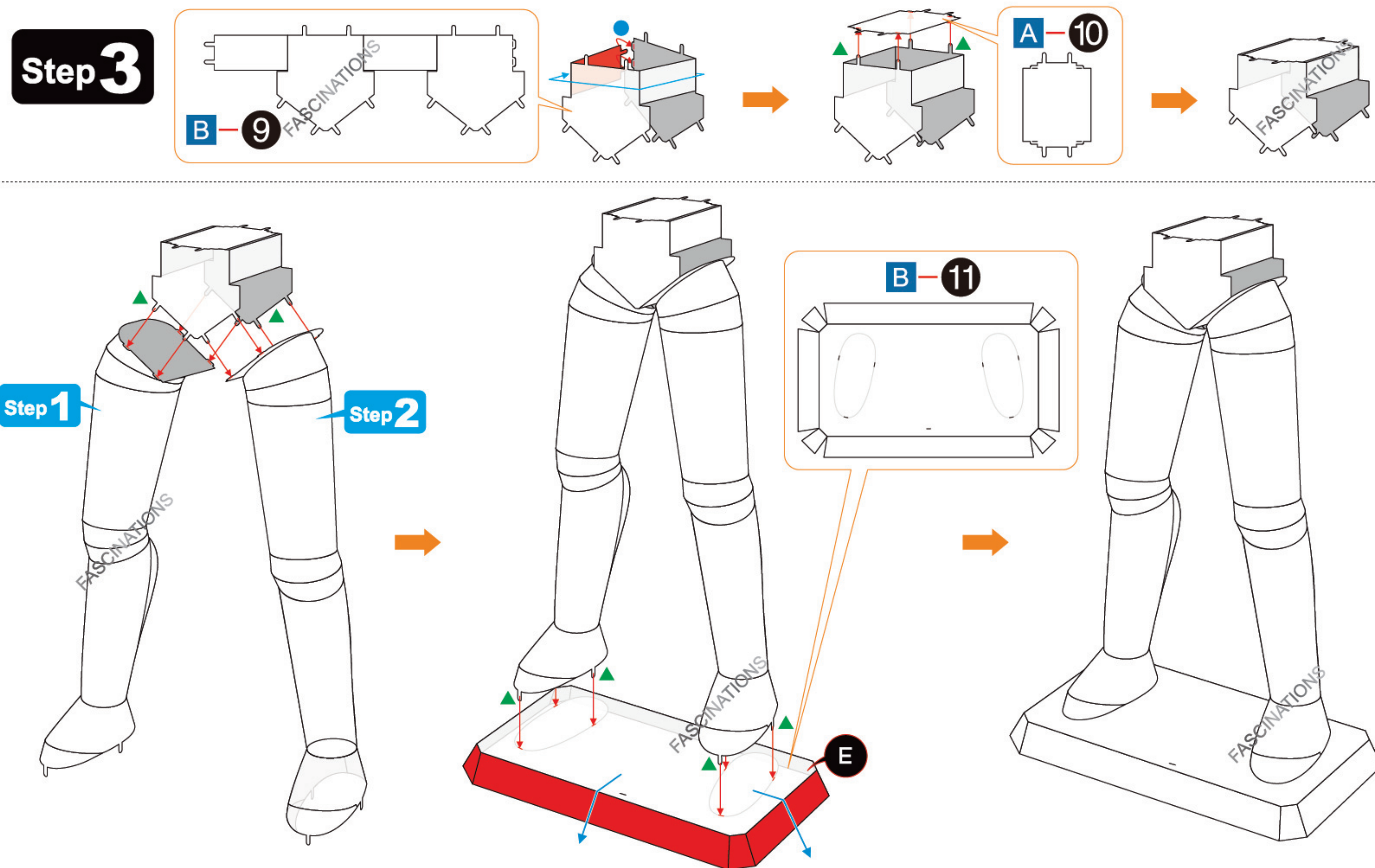
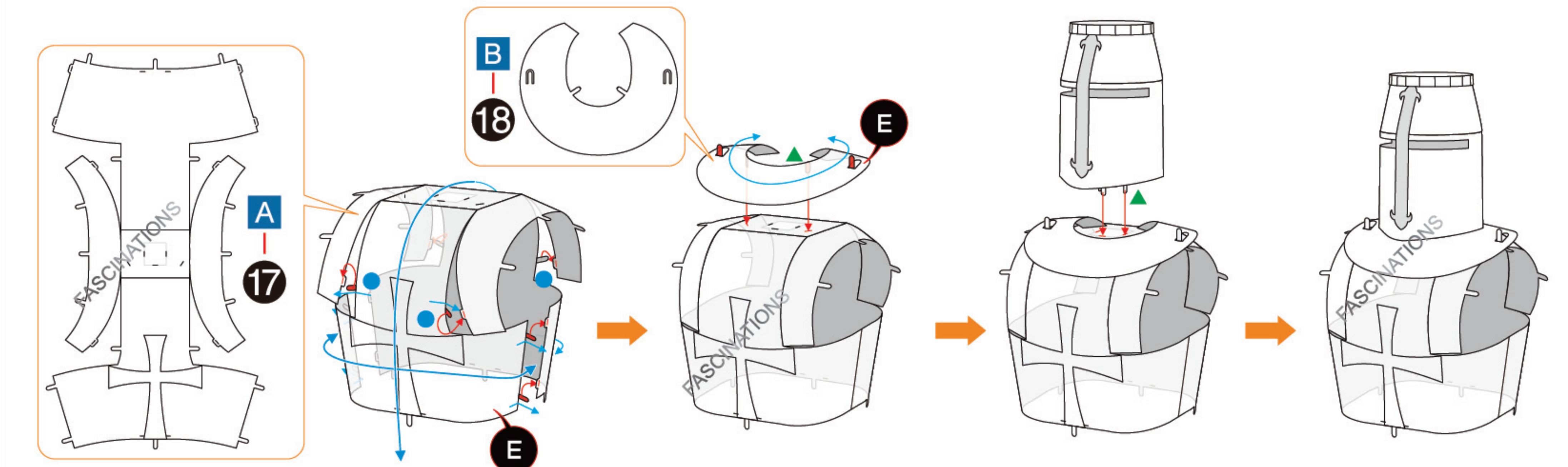
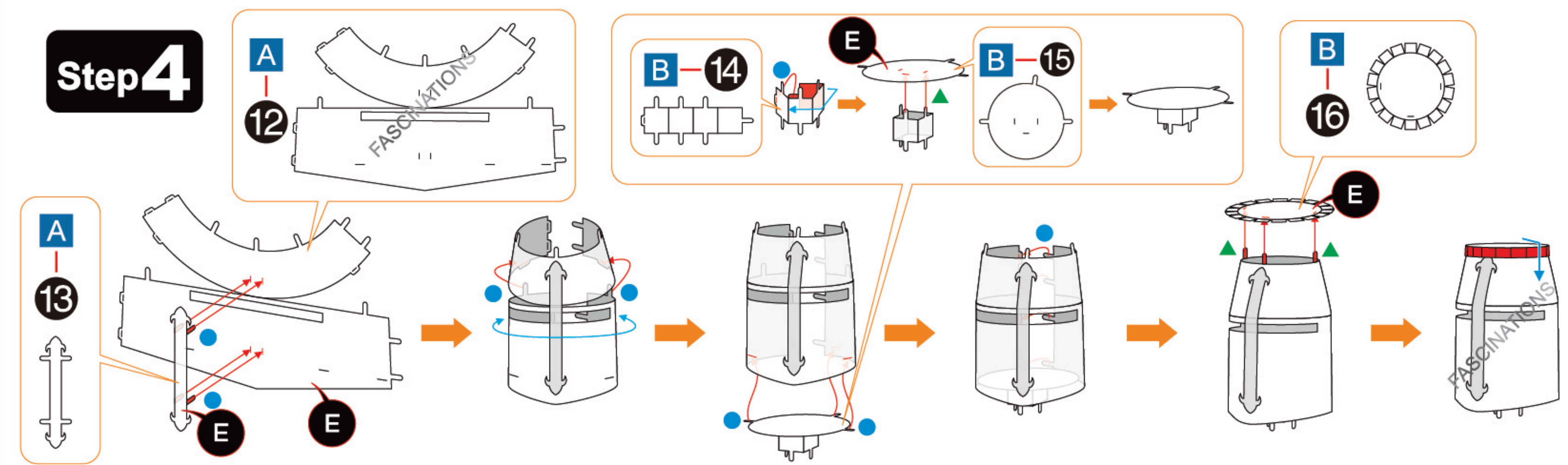
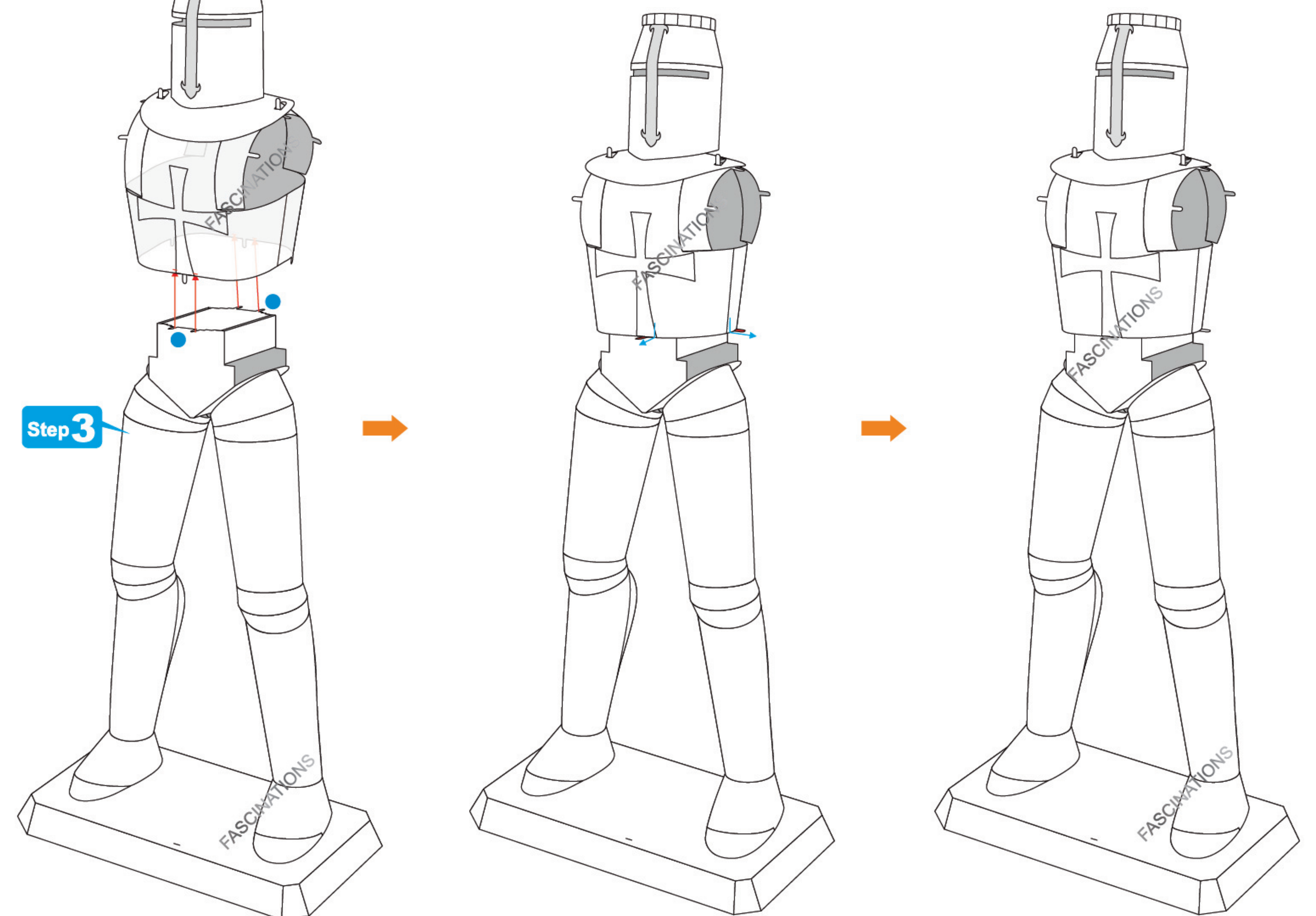
Assembly tip:

If needed, slightly twist tabs to hold parts together then untwist and bend them down for a nice finish

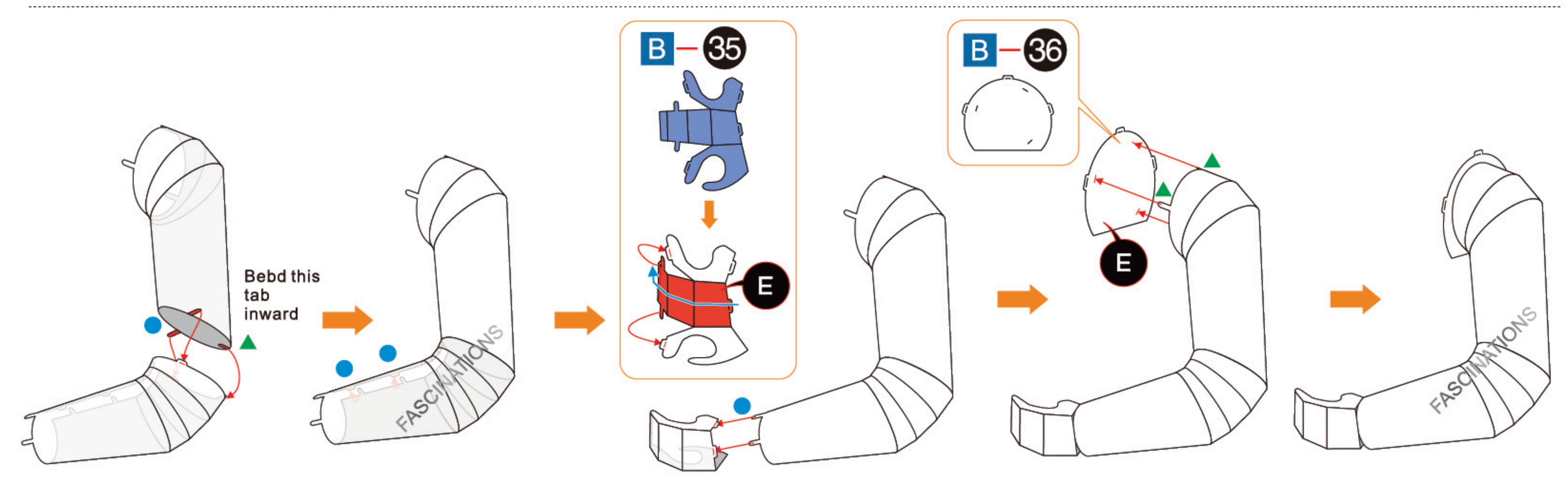
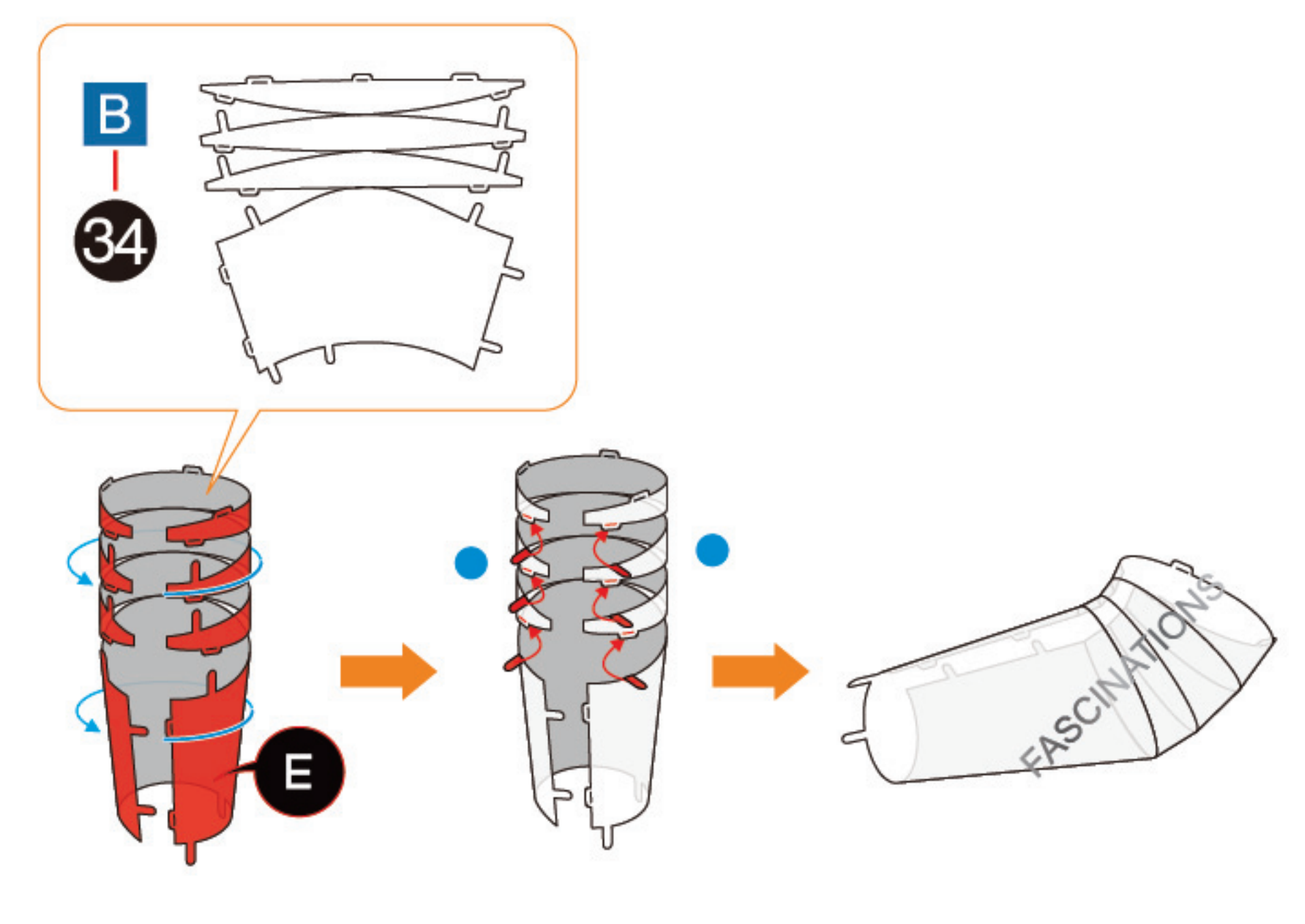
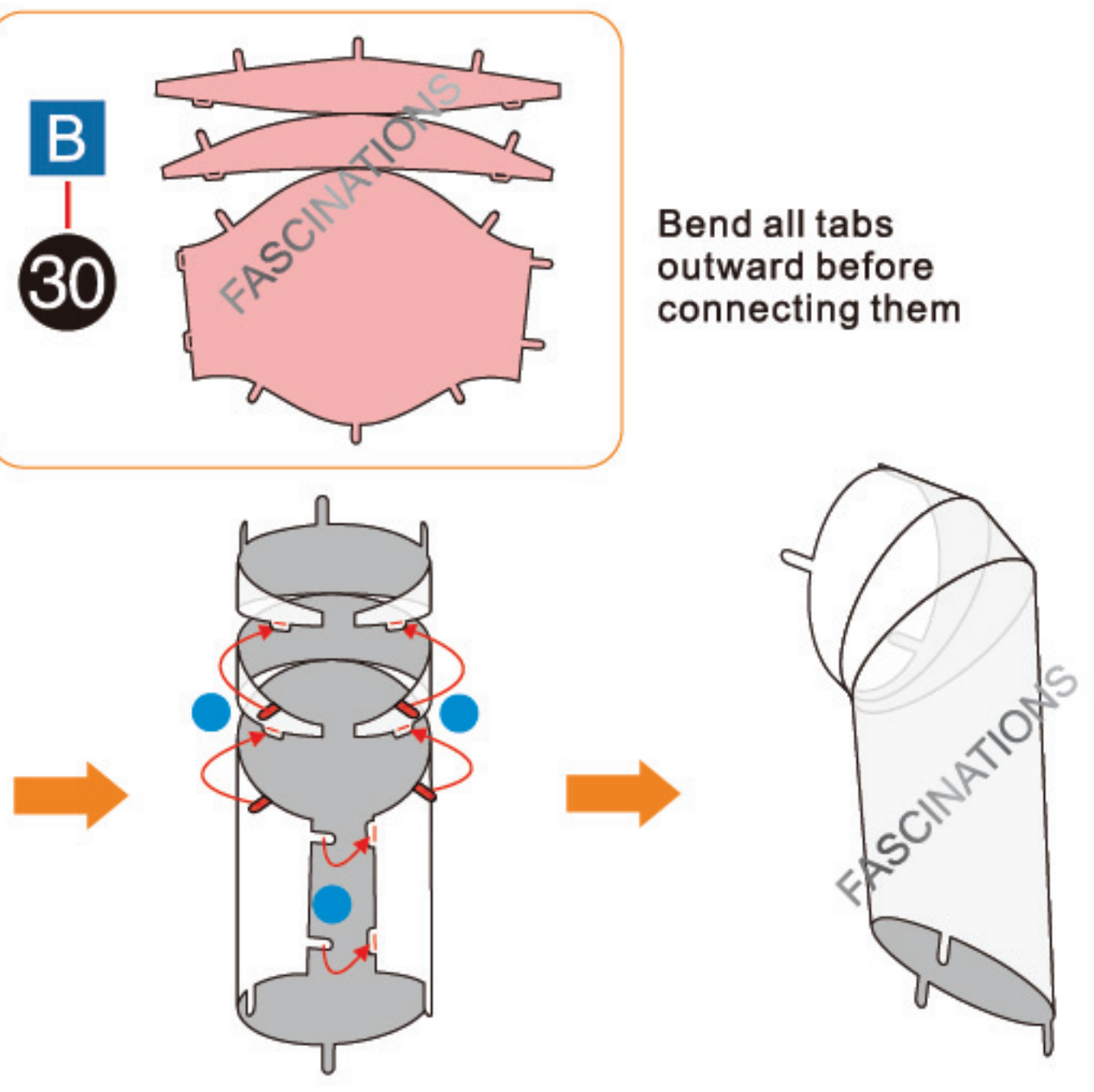
ASSEMBLY STEPS

Step 1

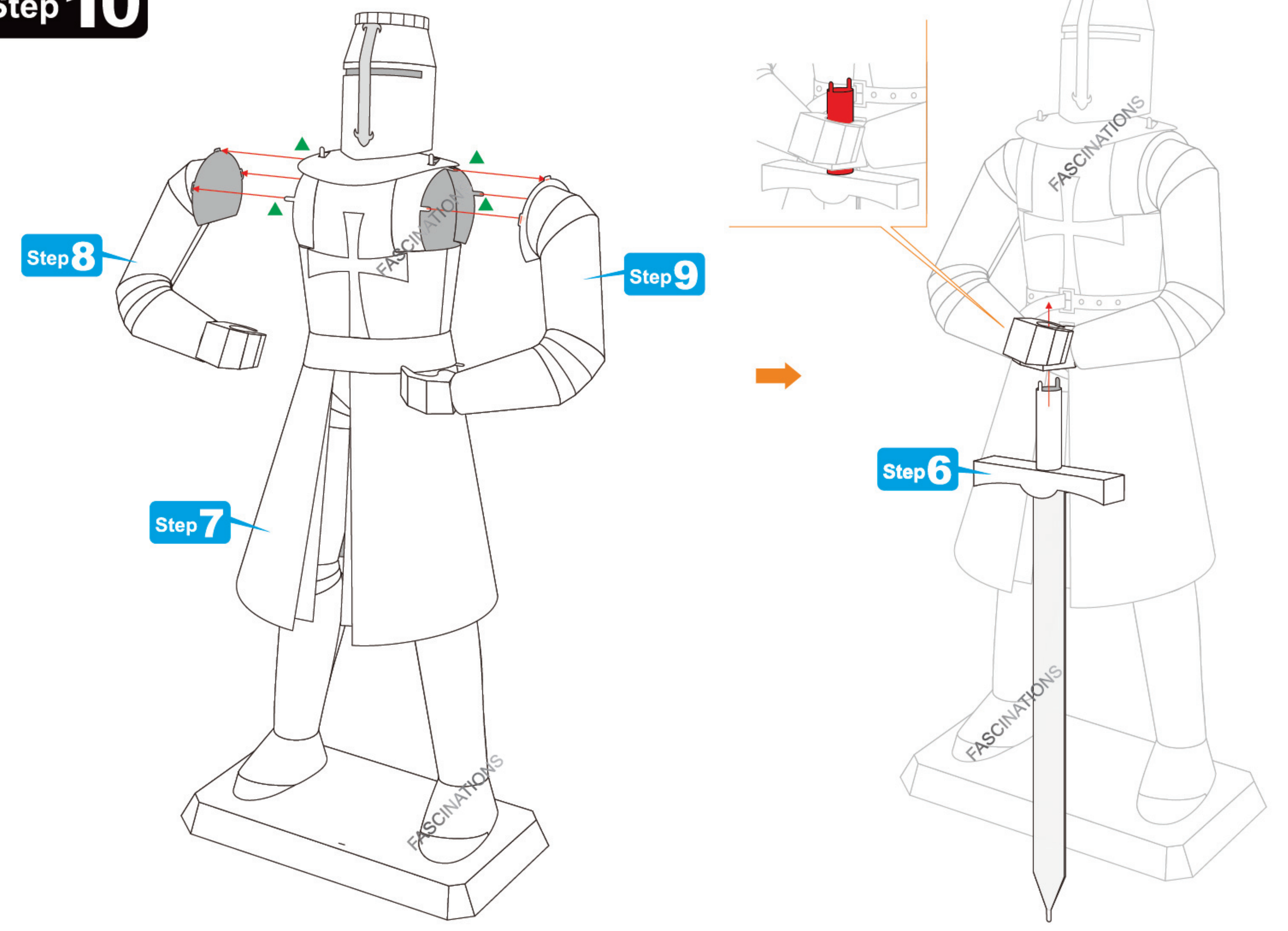


Step 2**Step 3****Step 4****Step 3**

Step 9



Step 10



Step 11

Step 10

