

Western Star 4900 Log Truck & Trailer

Item No. ICX136



It is highly recommended that you visit www.metal-earth.com/360/icx136 to see the completed model before assembling your own

Legends:

- E** Engraved/Color side
- NE** Non-engraved/Silver side
- Attention point
- Insert tab and bend 90 degrees
- Insert tab and twist 90 degrees

Assembly tip:

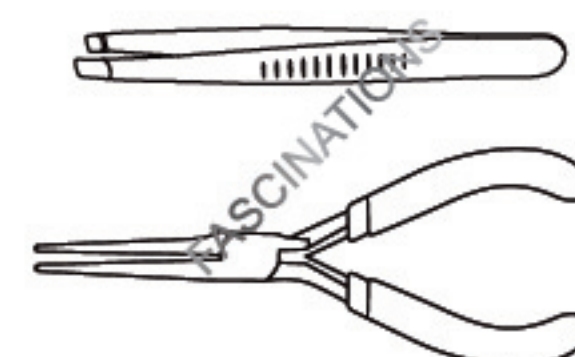
If needed, slightly twist tabs to hold parts together then untwist and bend them down for a nice finish

Recommended tools:

-Wire cutters: helpful for taking parts from the metal sheets.



-Tweezers or needle nose pliers: helpful for folding parts, bending and twisting tabs.

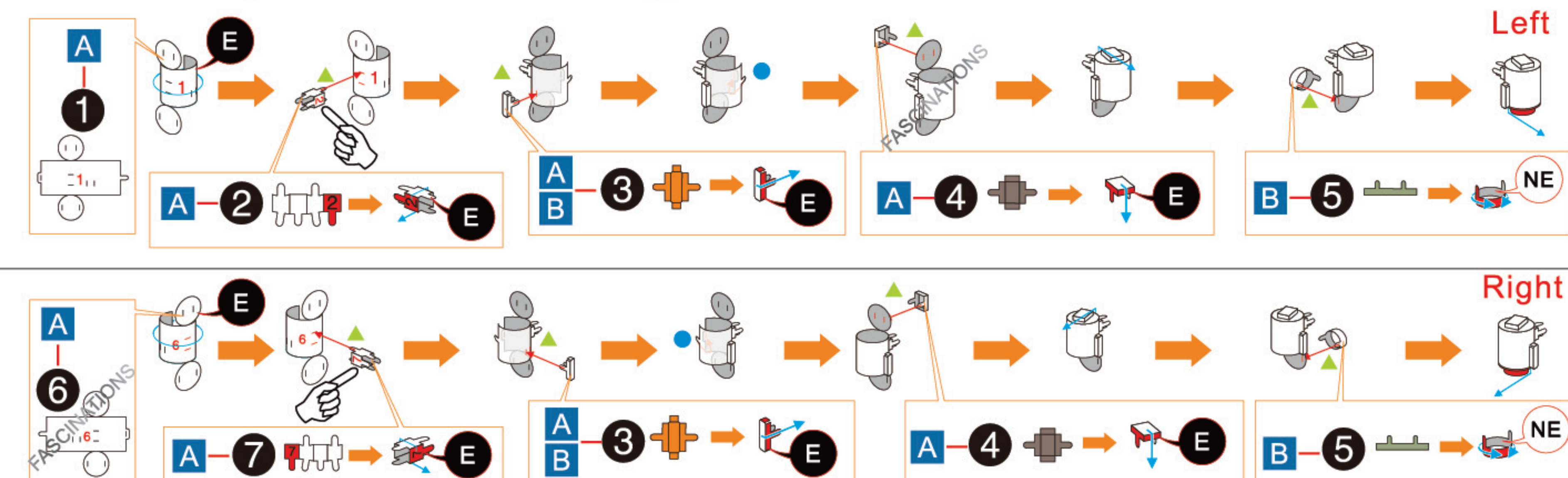


Insertion tabs are inserted and then folded

Insertion holes

Fold lines can be seen as shown here

Assembly Flow Chart: Log Truck

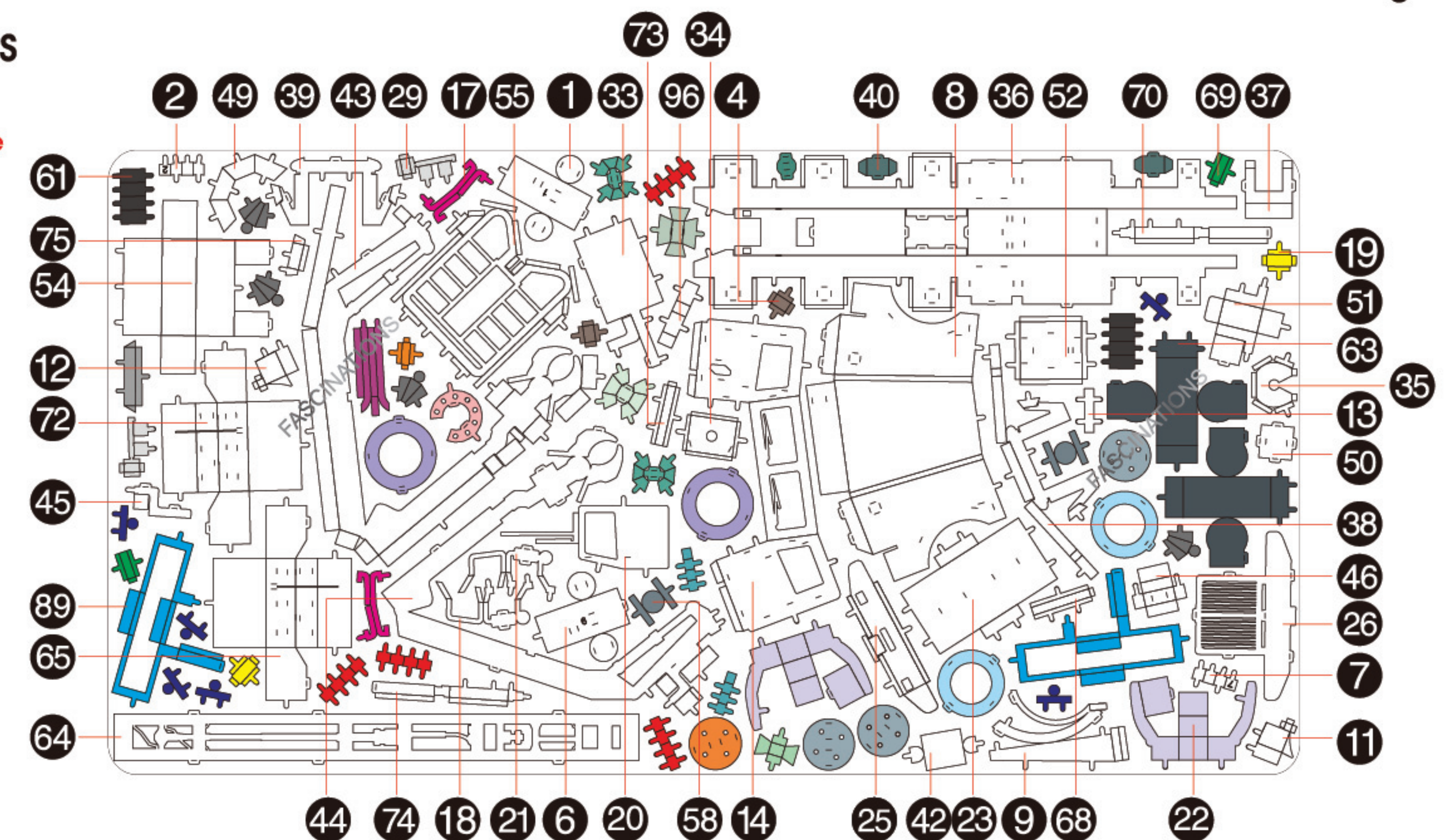


In order to avoid possible injury from sharp edges, please carefully discard the metal sheets after parts have been removed

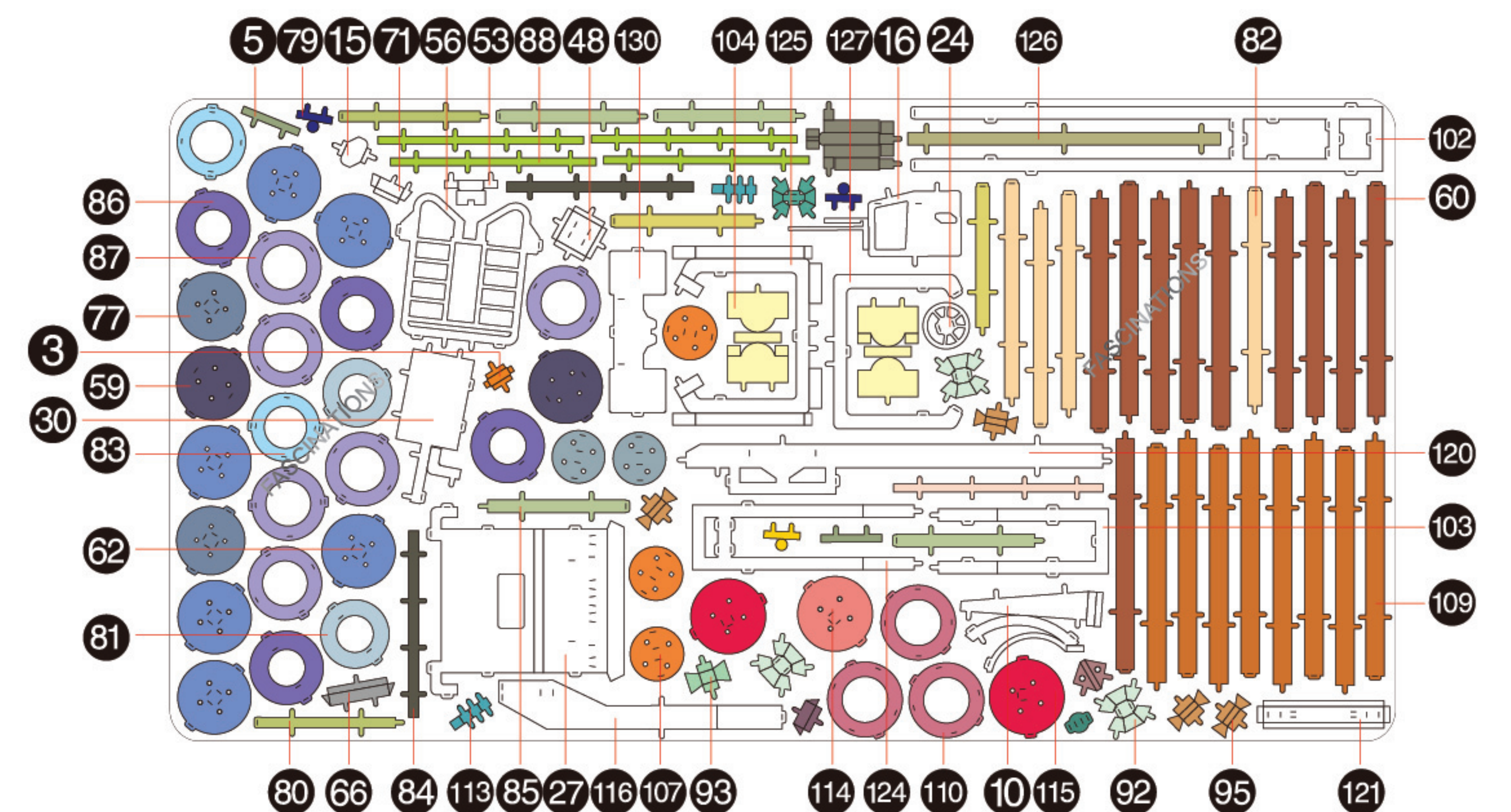
Metal sheets

Parts that are in the same color are duplicates

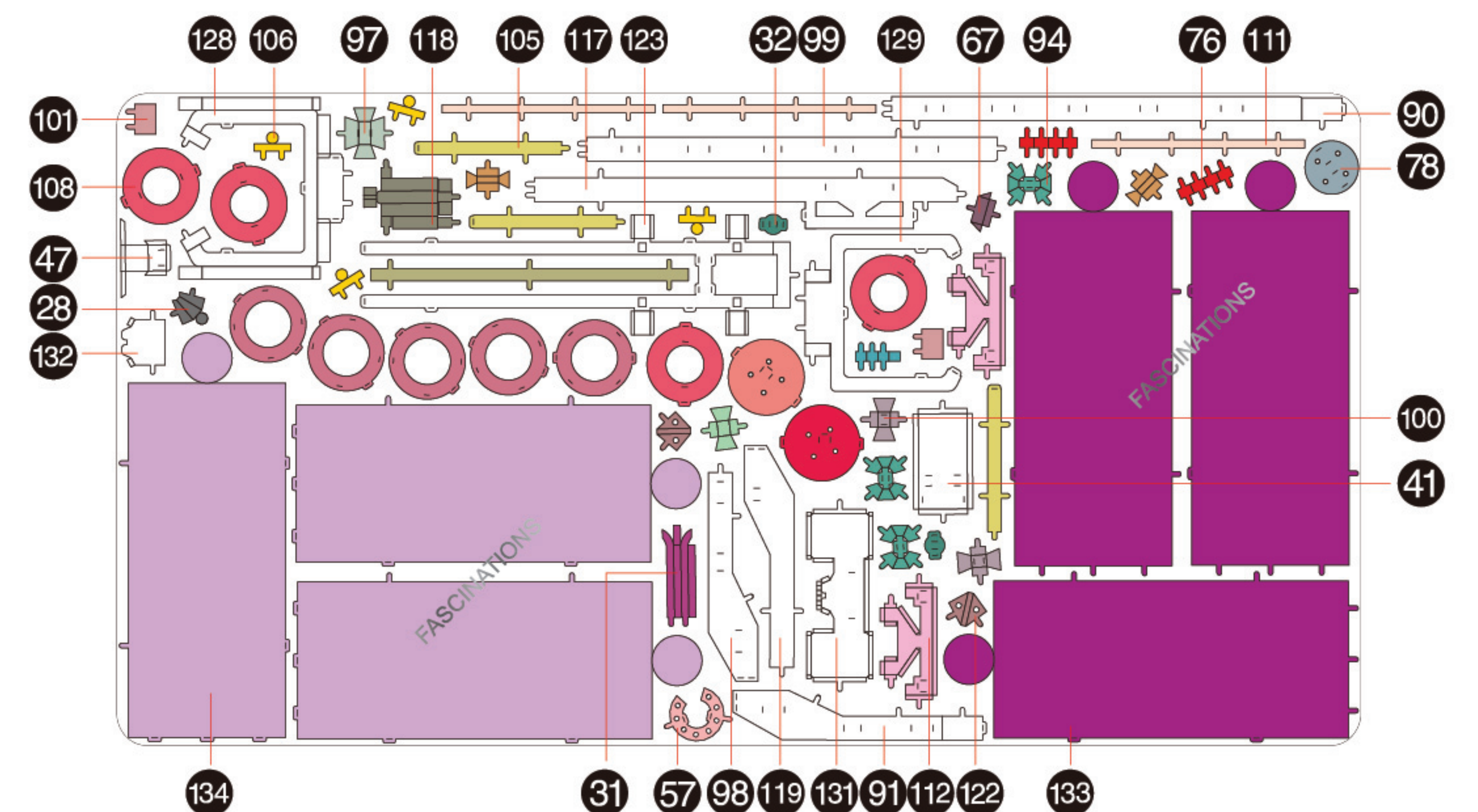
A



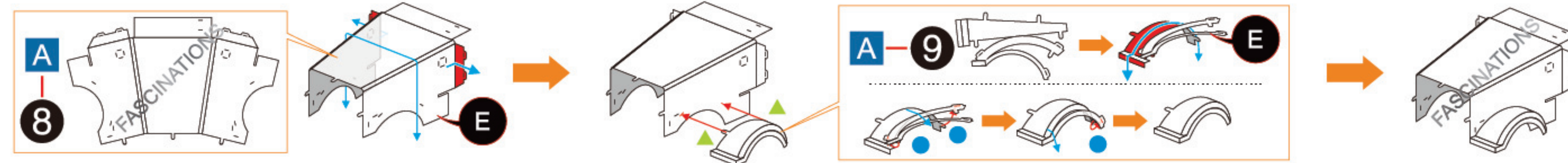
B



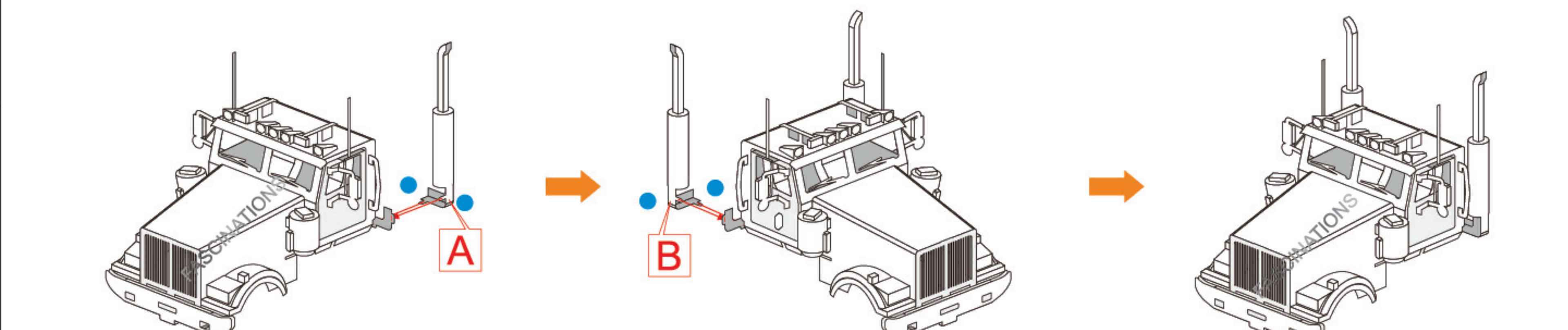
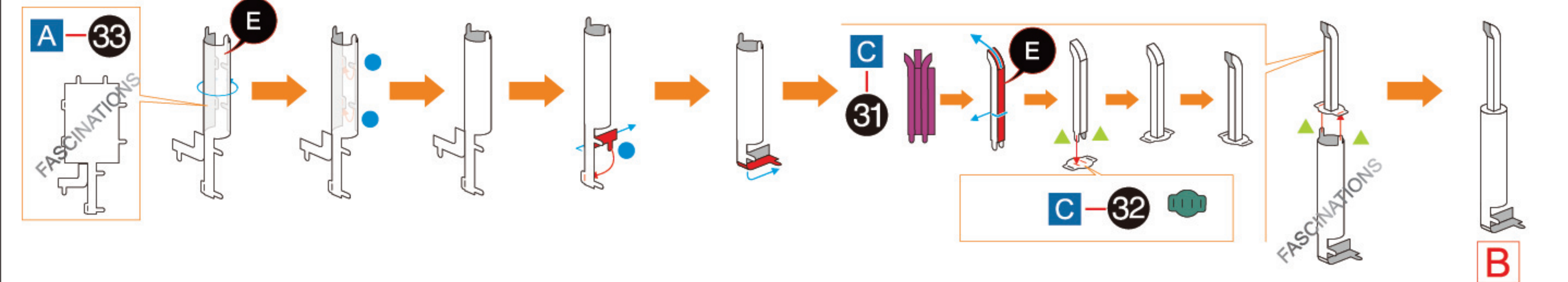
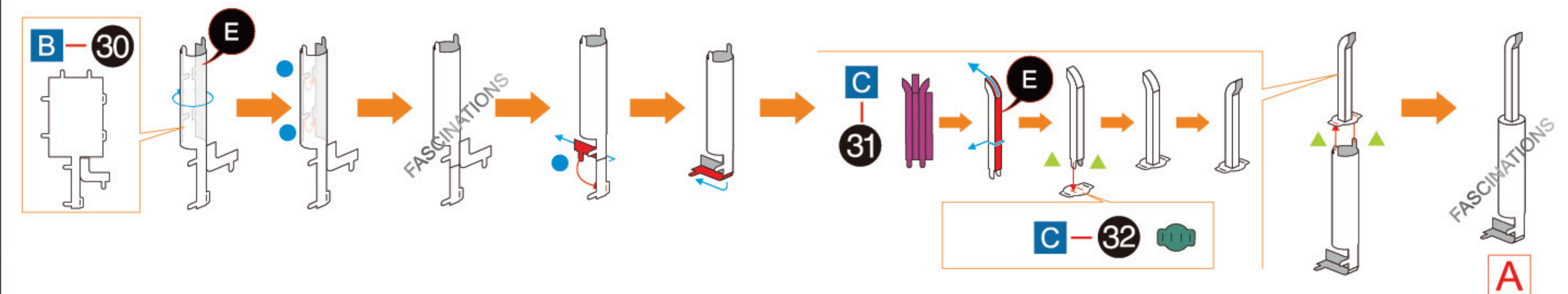
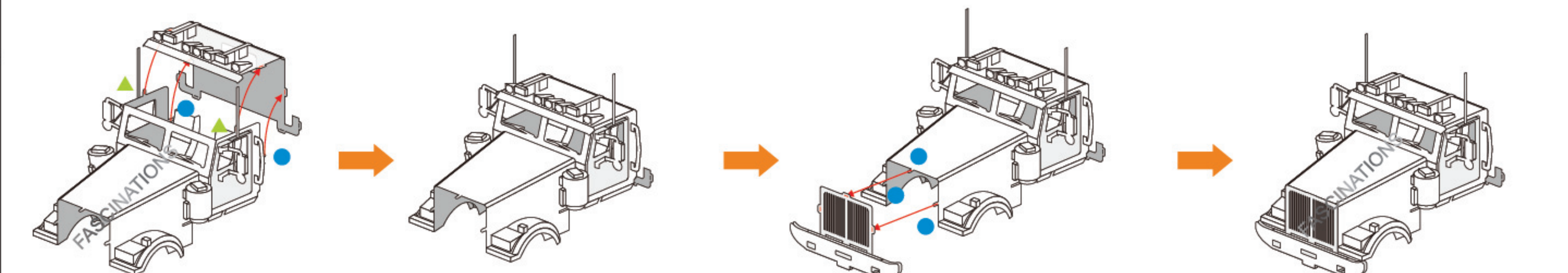
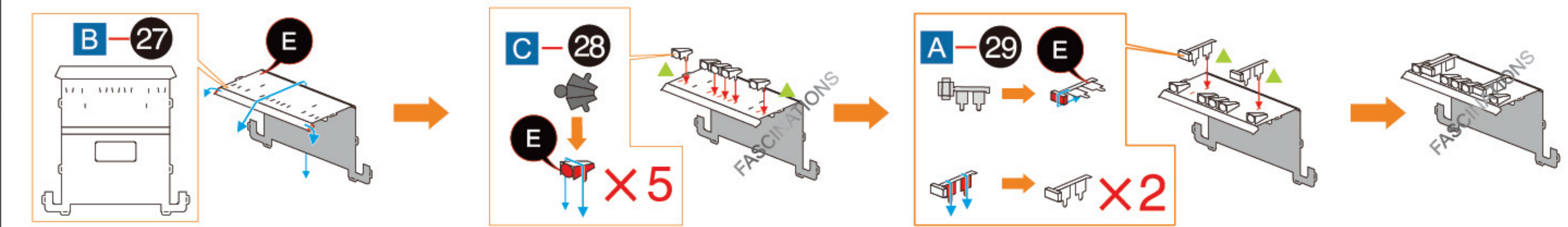
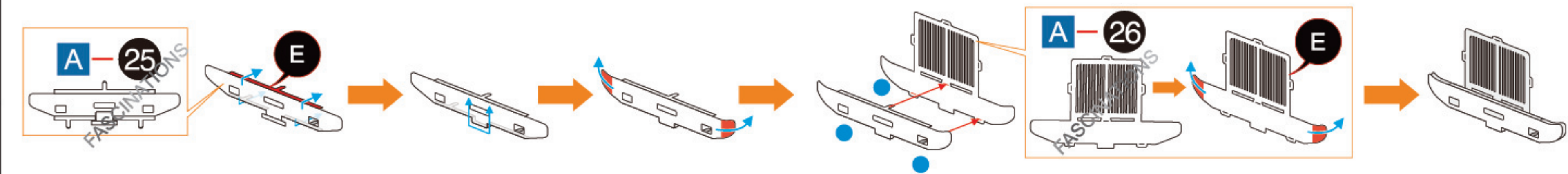
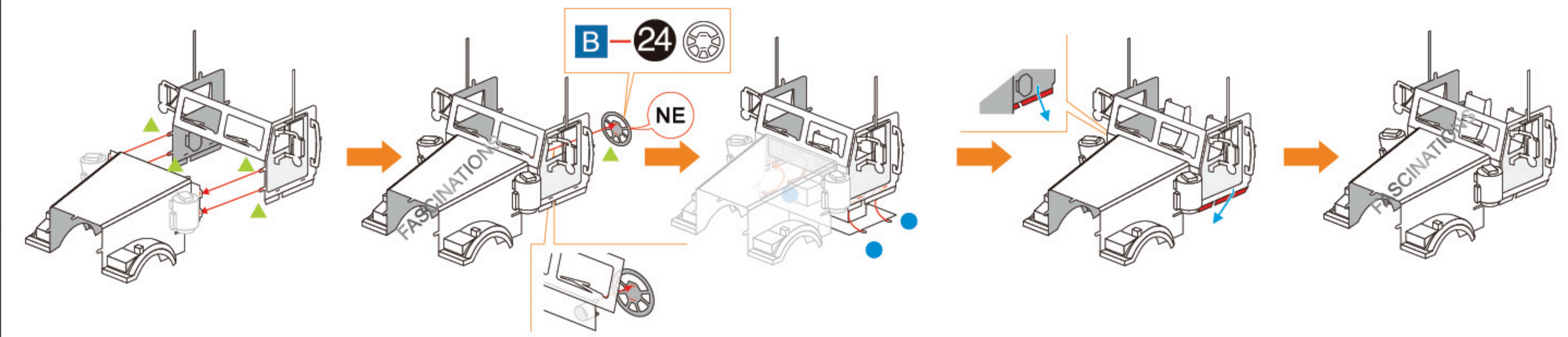
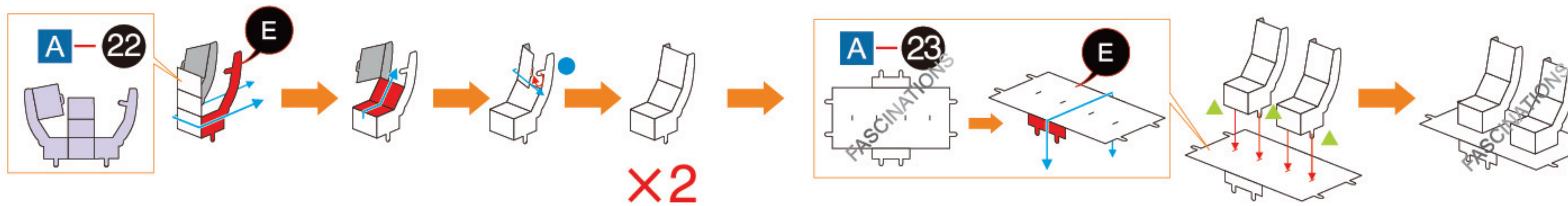
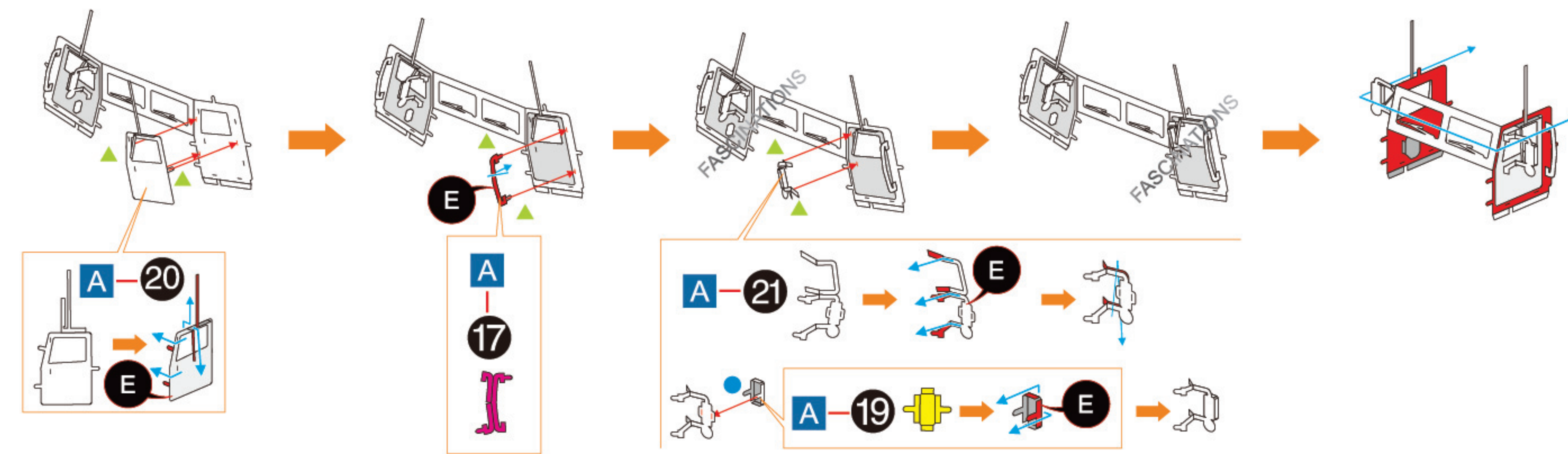
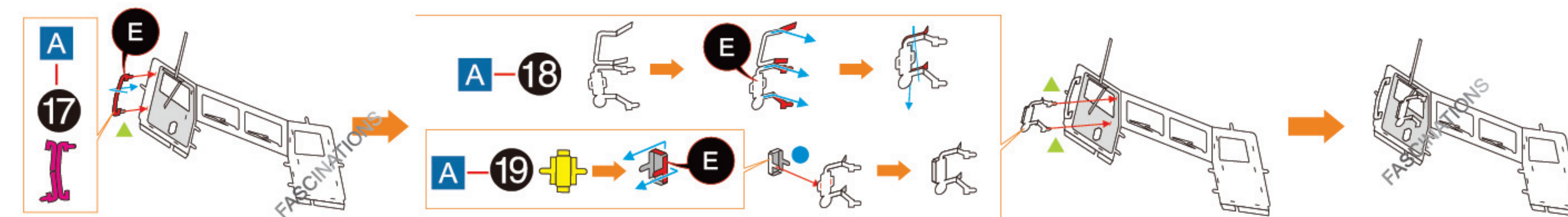
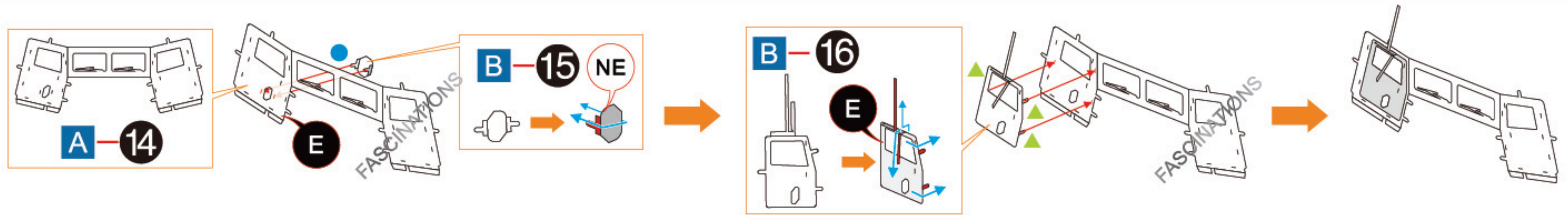
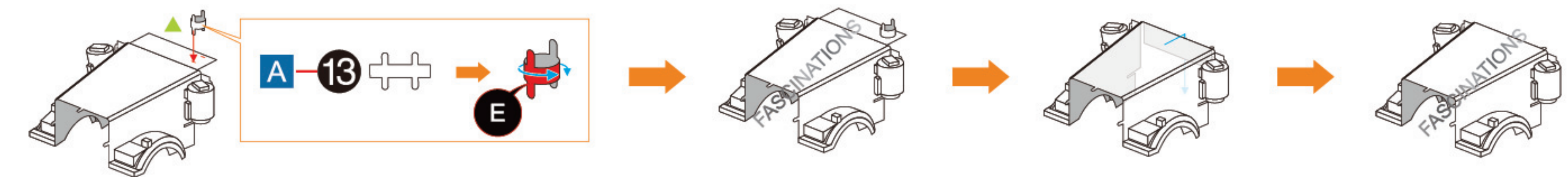
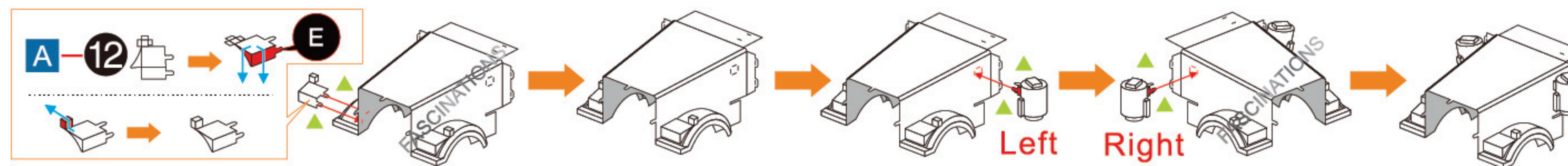
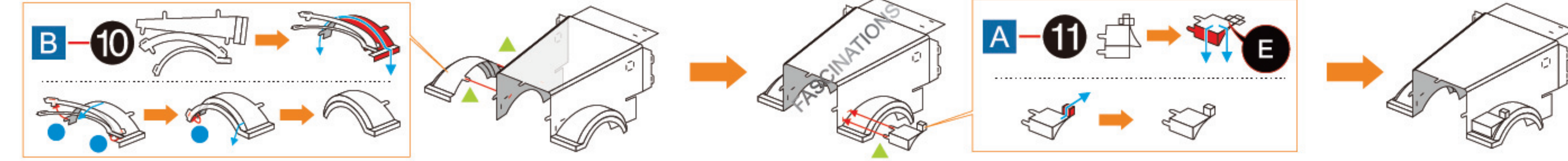
C

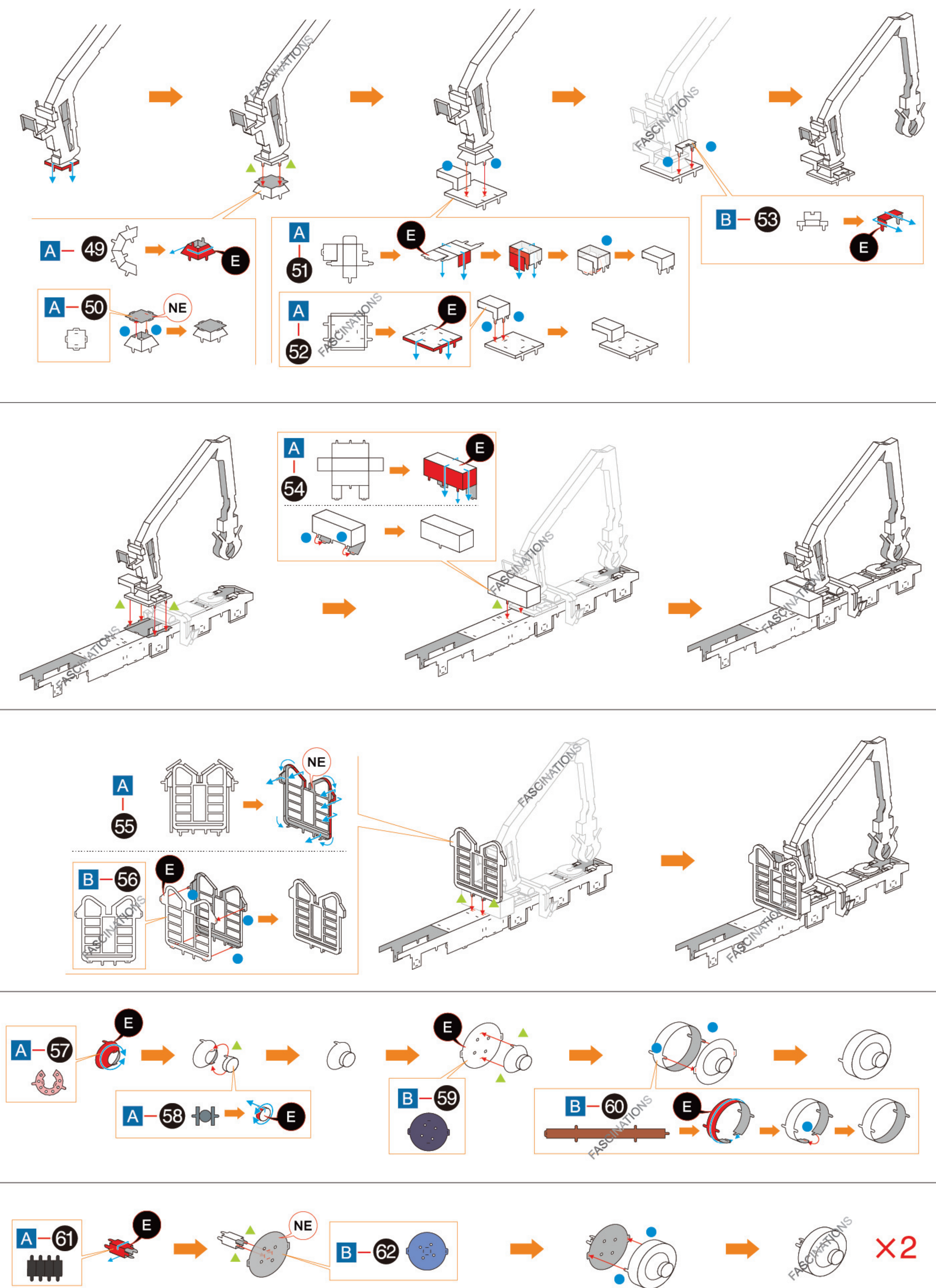
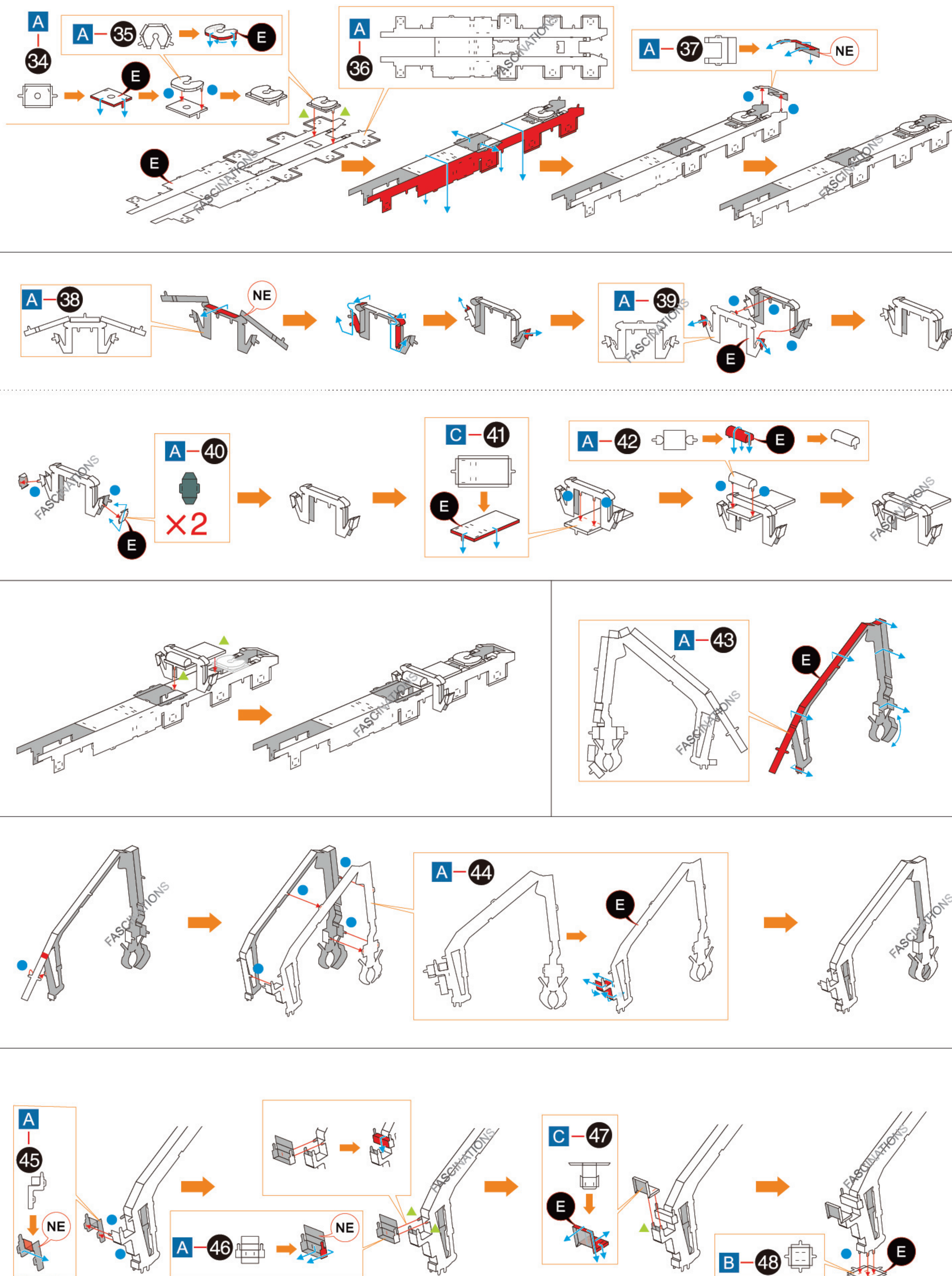


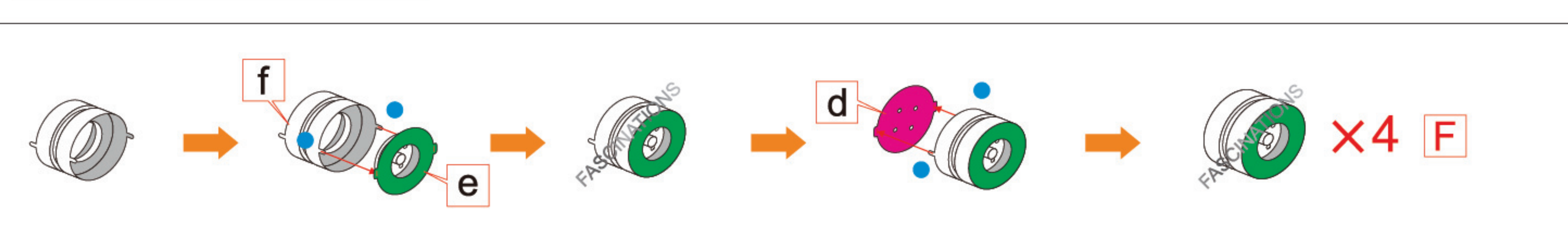
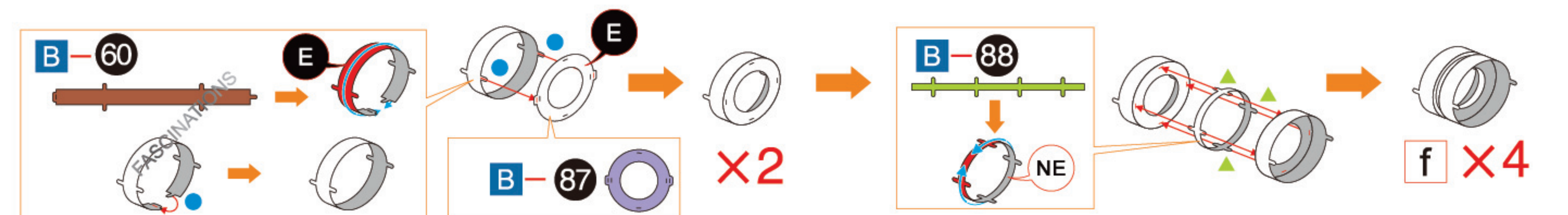
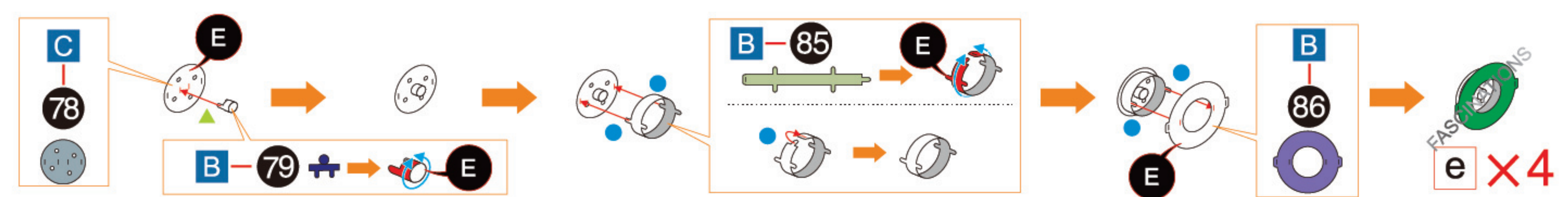
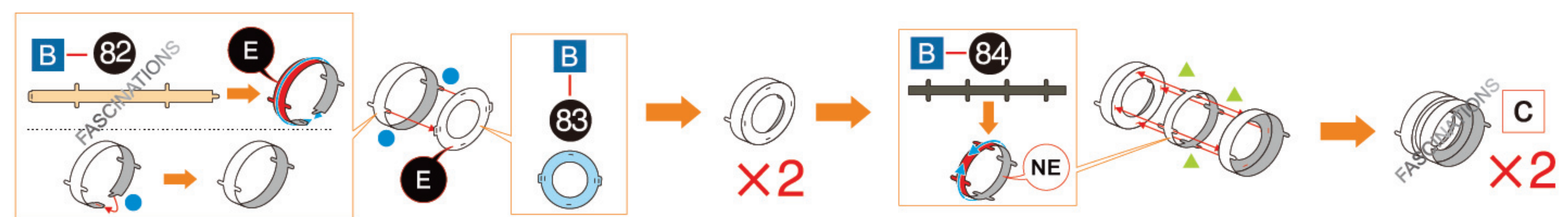
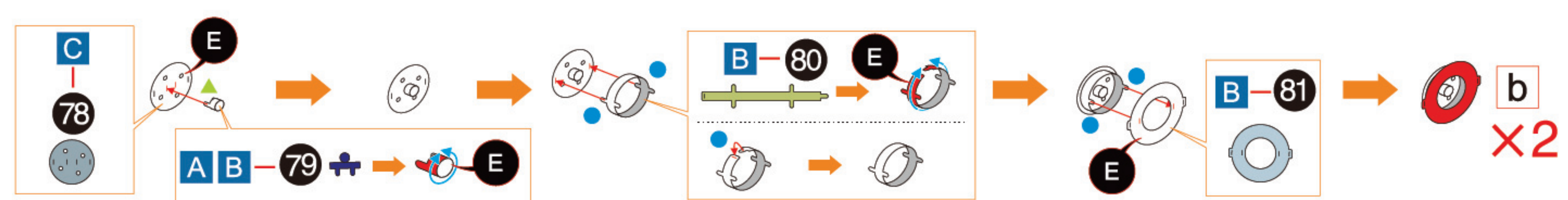
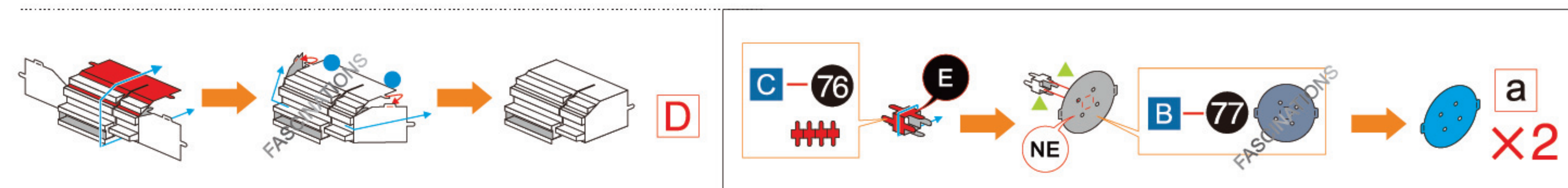
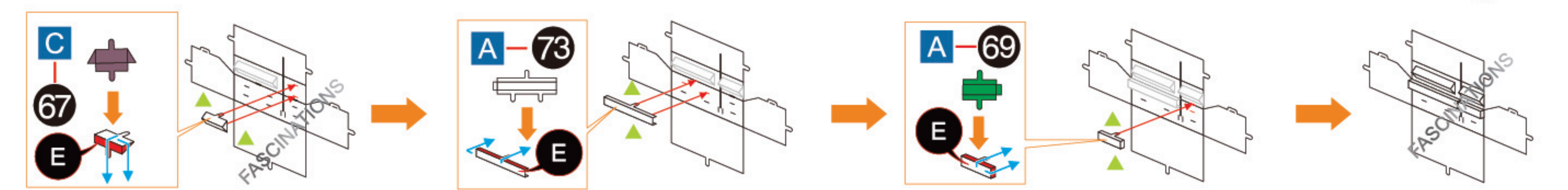
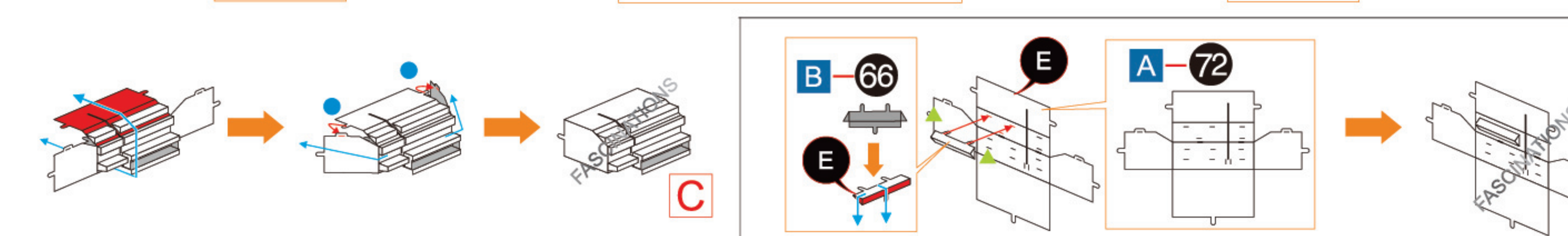
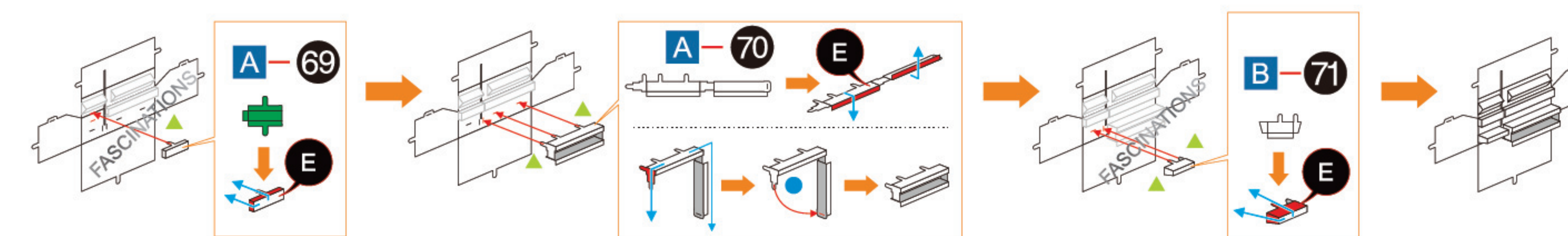
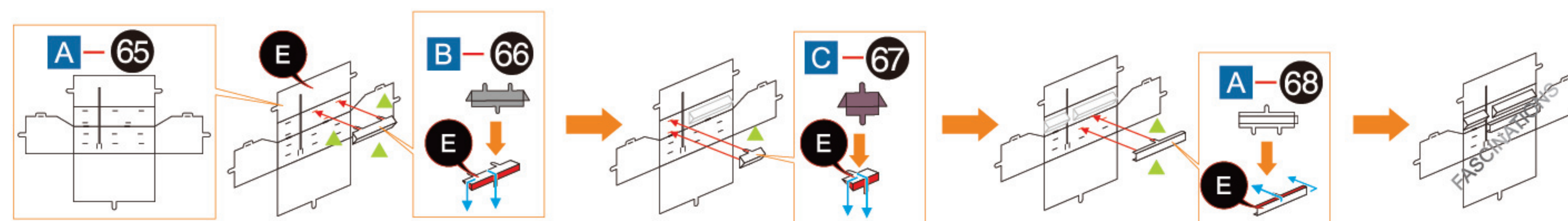
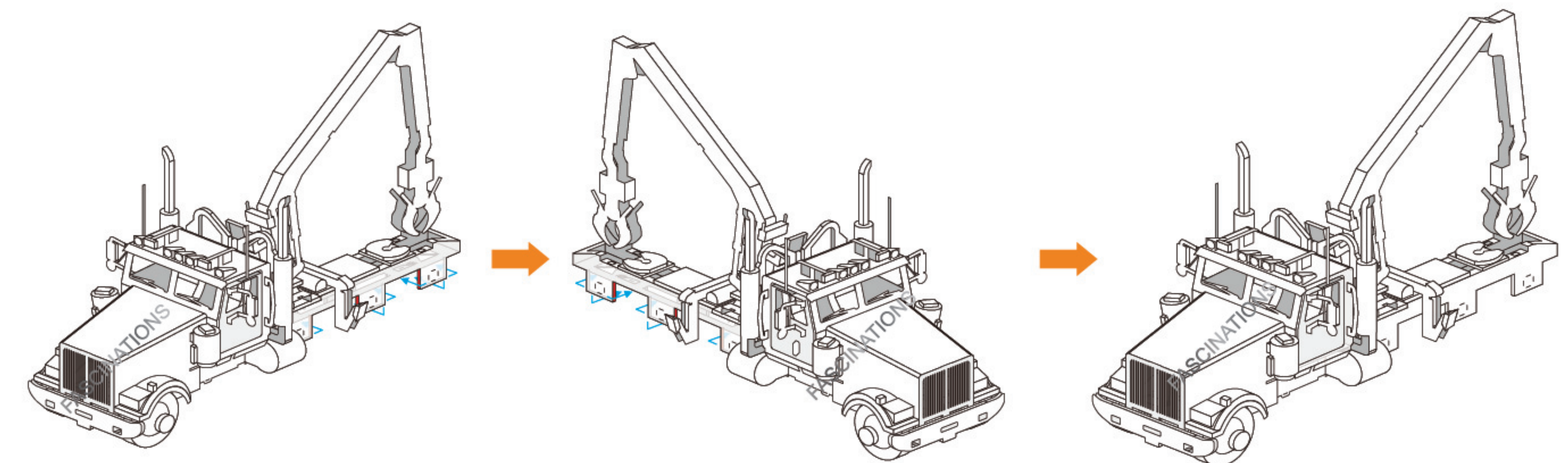
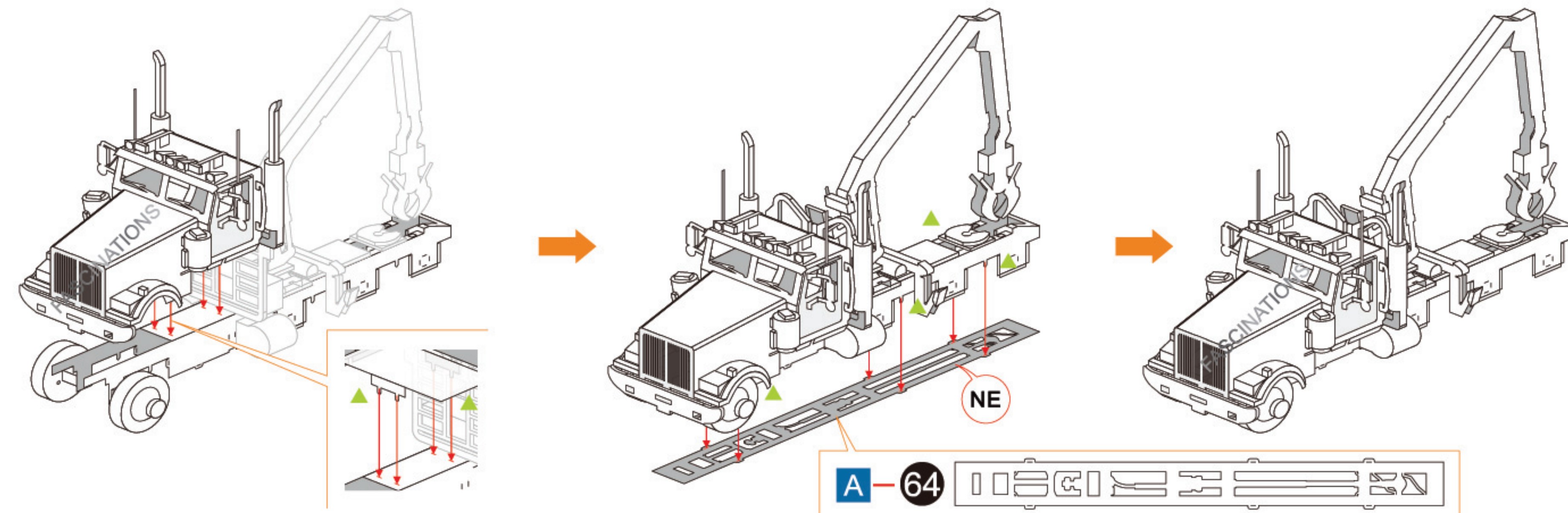
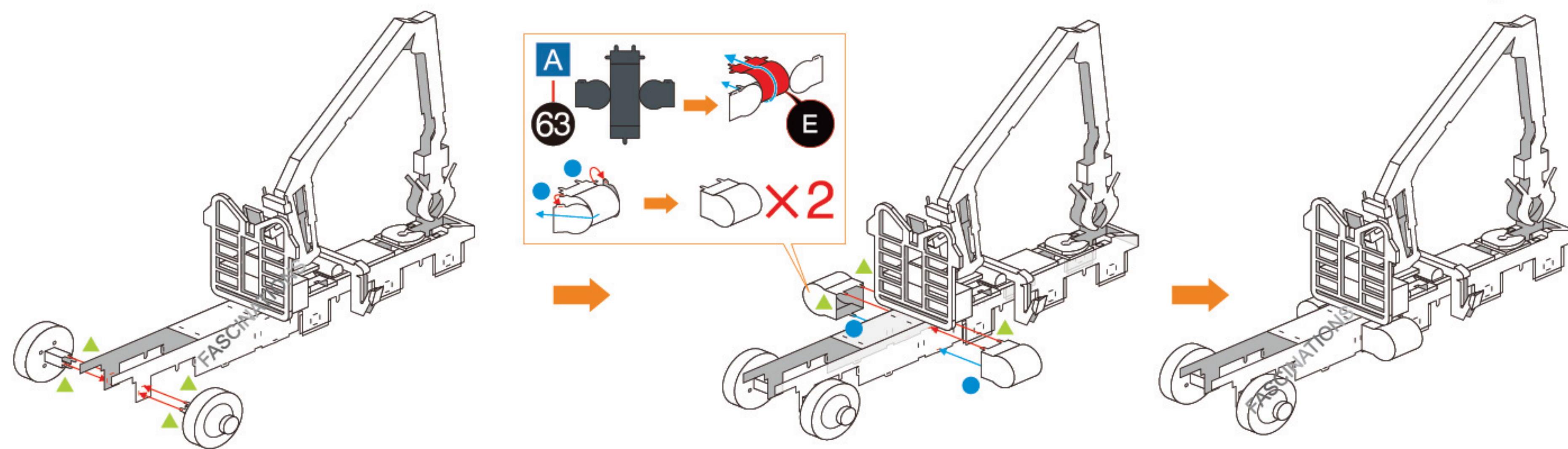
Check the online product view on how to correctly bend A-9.

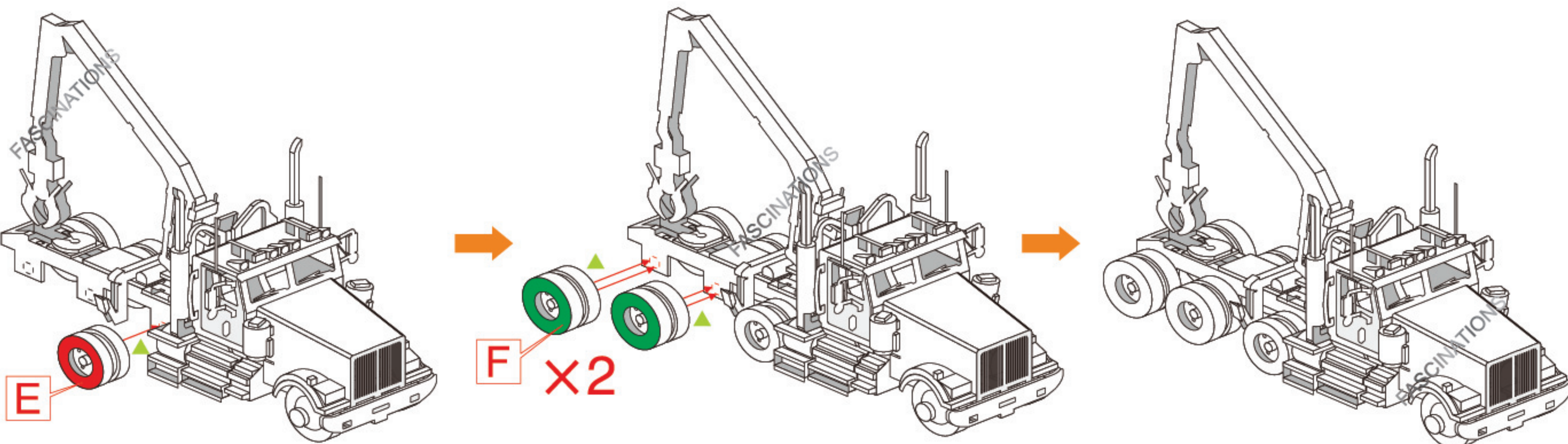
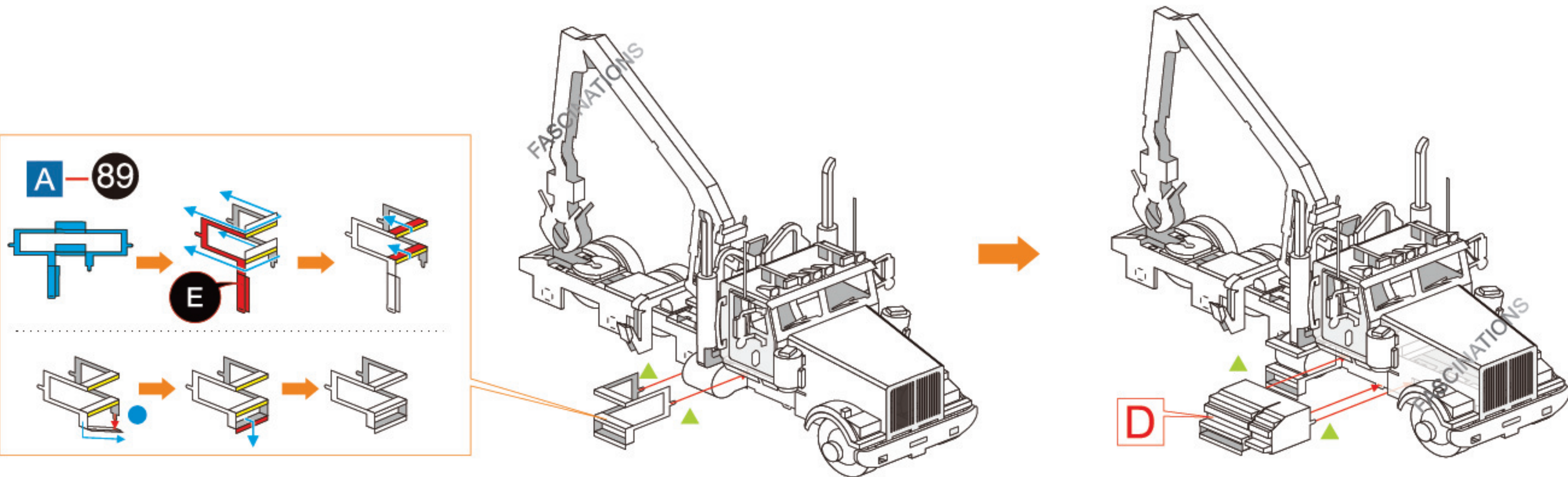
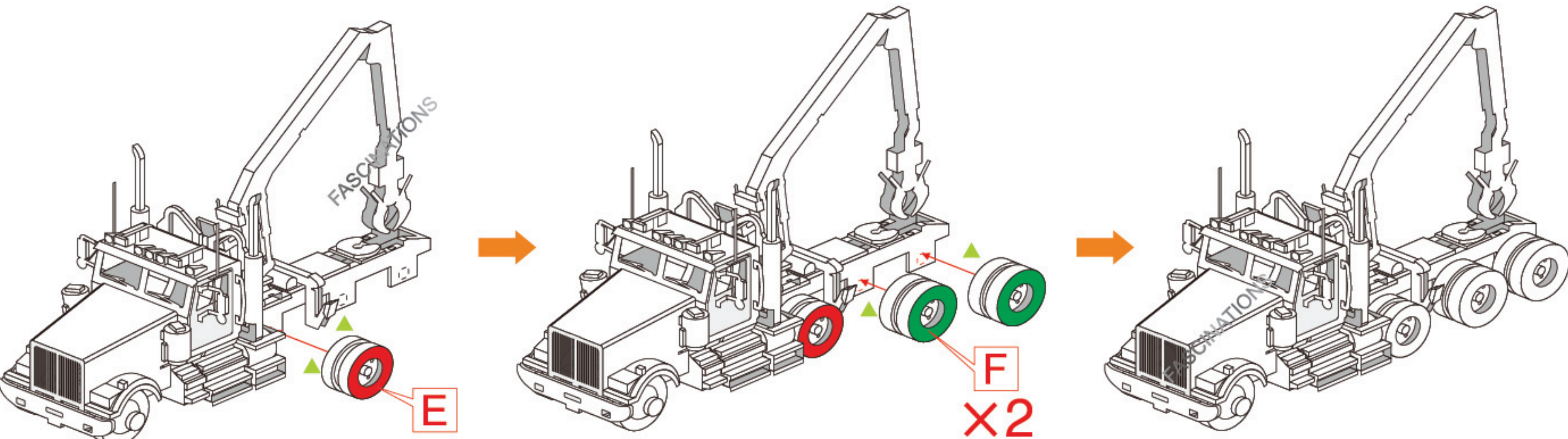
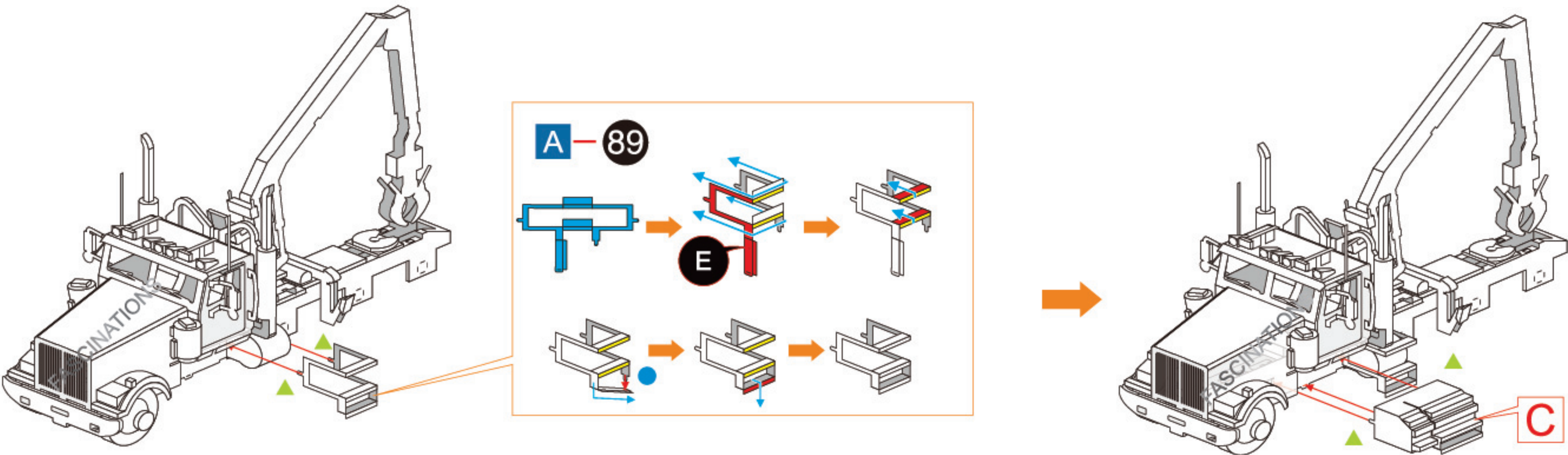


Check the online product view on how to correctly bend A-10.









Assembly Flow Chart: Log Trailer

