

Metal Earth. LEGENDS



Legolas



Tweezers or needle nose pliers are helpful for assembly.

To create the best connections

- Insert tab and bend 90 degrees for most visible areas
- ▲ Insert tab and twist 90 degrees is best in some areas to ensure a tight connection

Fold lines can be seen as shown here

Insertion holes

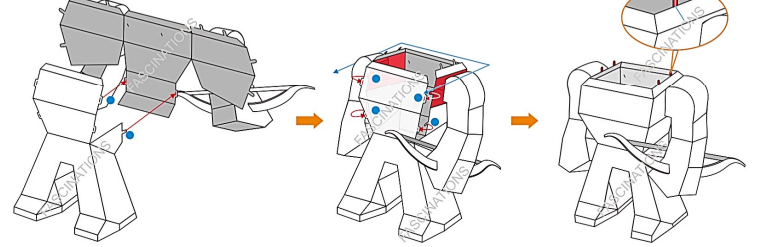
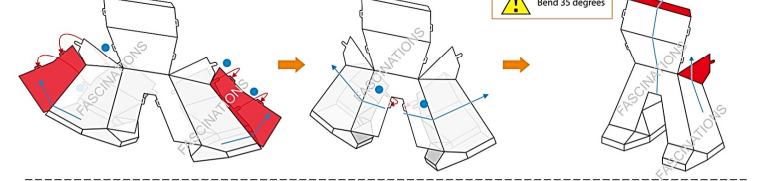
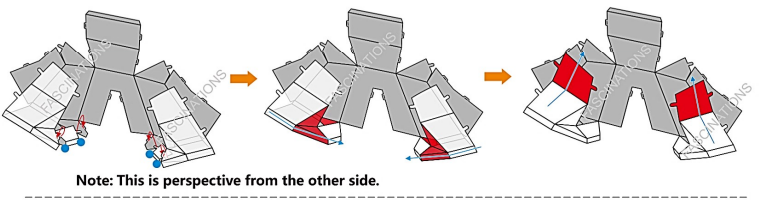
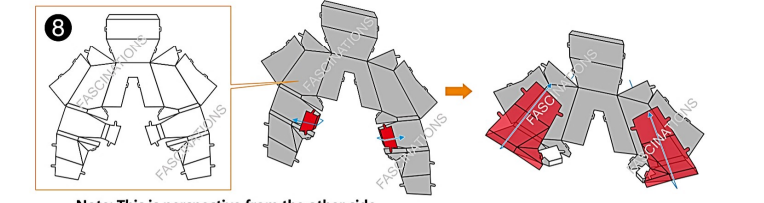
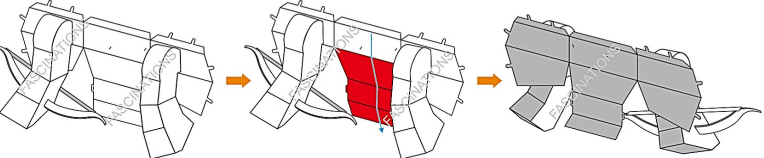
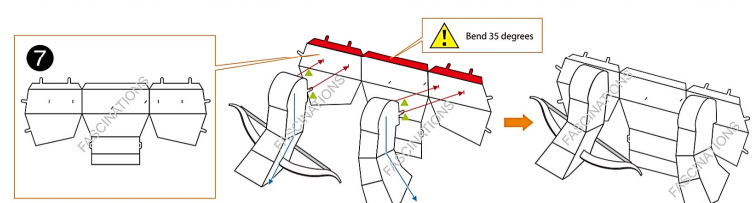
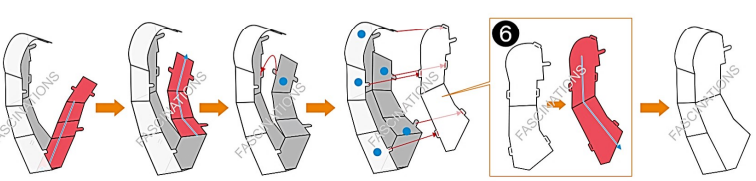
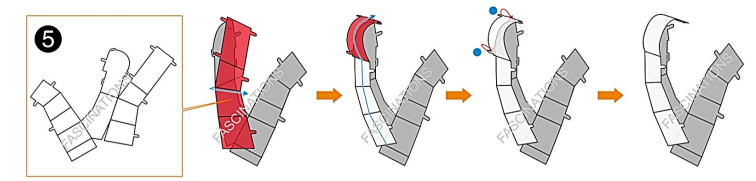
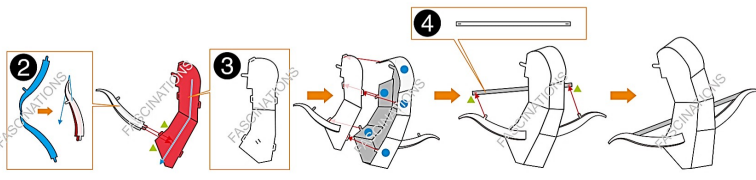
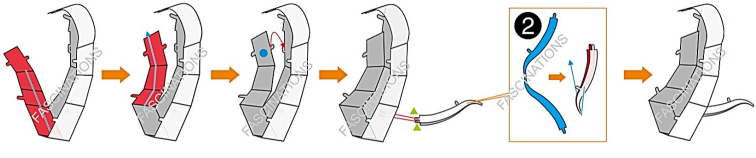
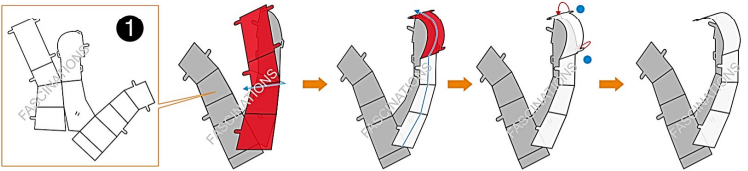
Insertion tabs are inserted and then folded or twisted



It is recommended that you visit www.metalearth.com/help/mem074 for more information when assembling this model.

⚠ In order to avoid possible injury from sharp edges, please carefully discard the metal sheet after parts have been removed

Assembly Flow Chart



⚠ The arms curve outward

