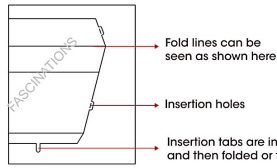
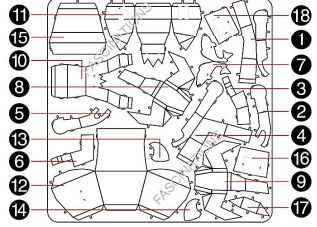


Metal Earth

LEGENDS



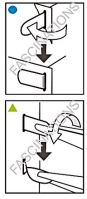
Gollum



Tweezers or needle nose pliers are helpful for assembly.

To create the best connections

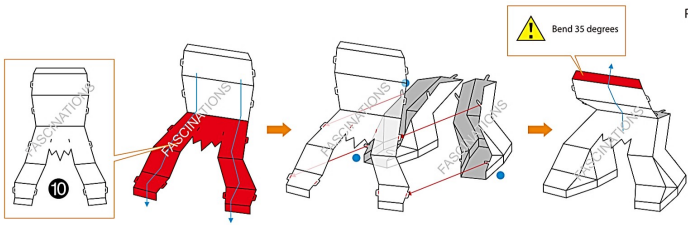
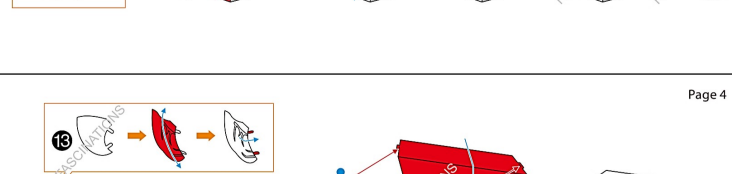
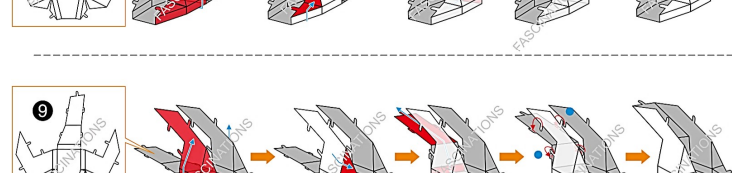
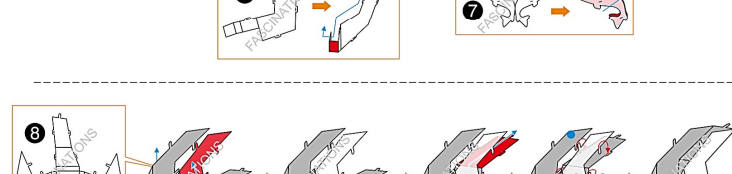
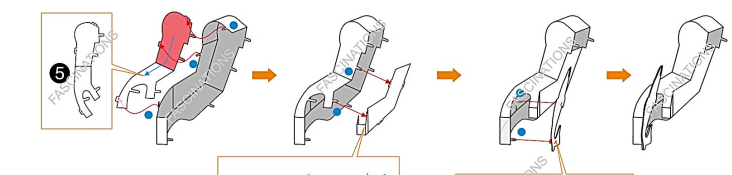
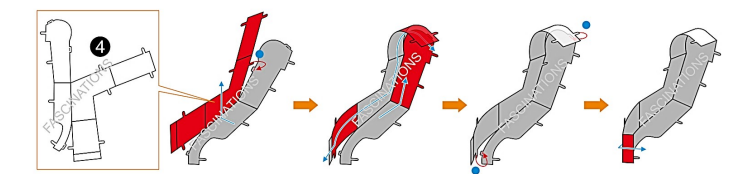
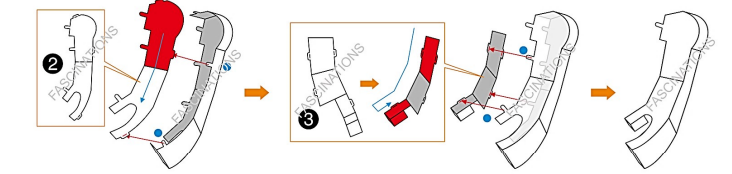
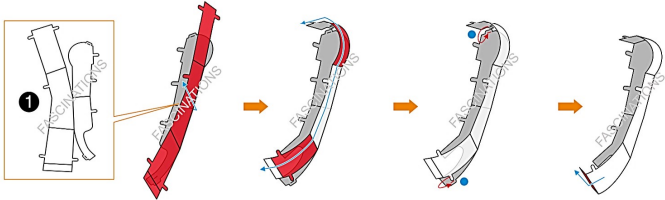
- Insert tab and bend 90 degrees for most visible areas
- ▲ Insert tab and twist 90 degrees is best in some areas to ensure a tight connection



It is recommended that you visit www.metalearth.com/help/mem075 for more information when assembling this model.

⚠ In order to avoid possible injury from sharp edges, please carefully discard the metal sheet after parts have been removed

Assembly Flow Chart



Note: This is perspective from the other side.

