

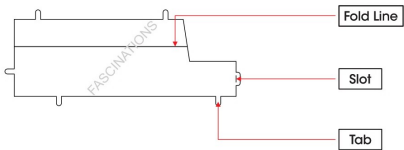
## EXCAVATOR MMS185



It is highly recommended that you visit [www.metalearth.com/360/mms185](http://www.metalearth.com/360/mms185) to see the completed model before assembling your own

### TO CREATE THE BEST CONNECTIONS

B - 10



#### Legends:

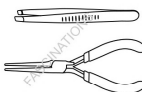
- Engraved/ Color side
- Non - engraved/ Silver side
- Attention point
- Insert tab and bend 90 degrees
- Insert tab and twist 90 degrees

#### Recommended tools:

- Wire cutters: helpful for taking parts from the metal sheets.



- Tweezers or needle nose pliers: helpful for folding parts, bending and twisting tabs.



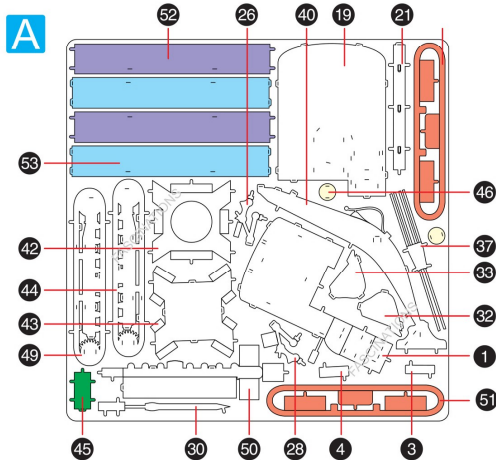
#### Assembly tip:

If needed, slightly twist tabs to hold parts together then untwist and bend them down for a nice finish.

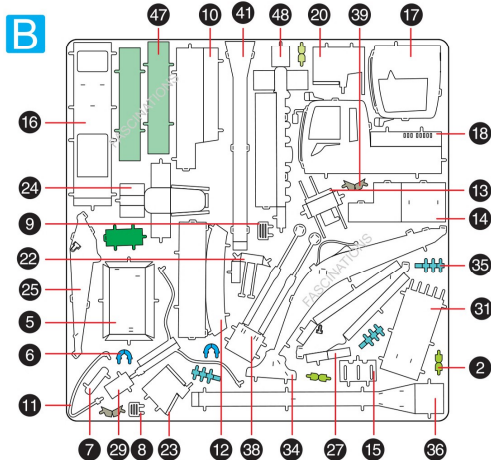


In order to avoid possible injury from sharp edges, please carefully discard the metal sheets after parts have been removed.

### METAL SHEETS

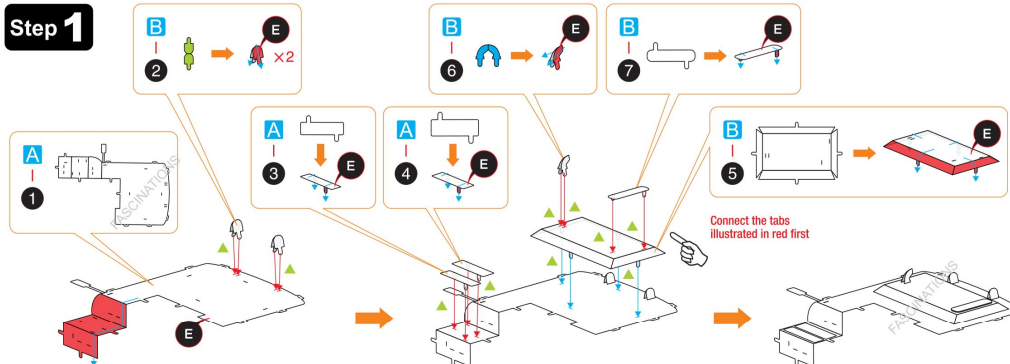


Parts with same color are duplicates

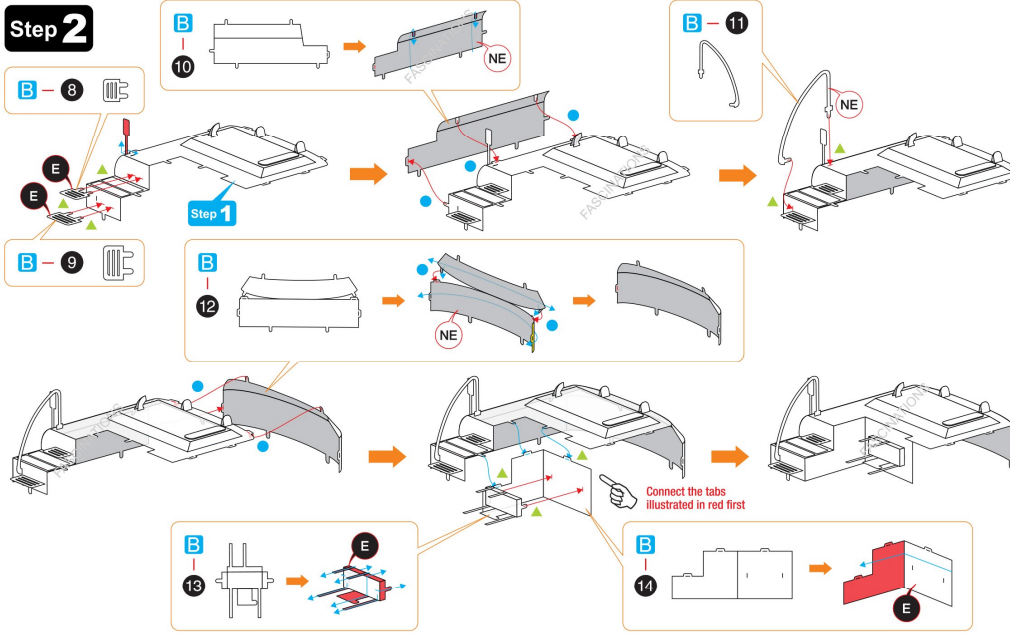


### ASSEMBLY STEPS

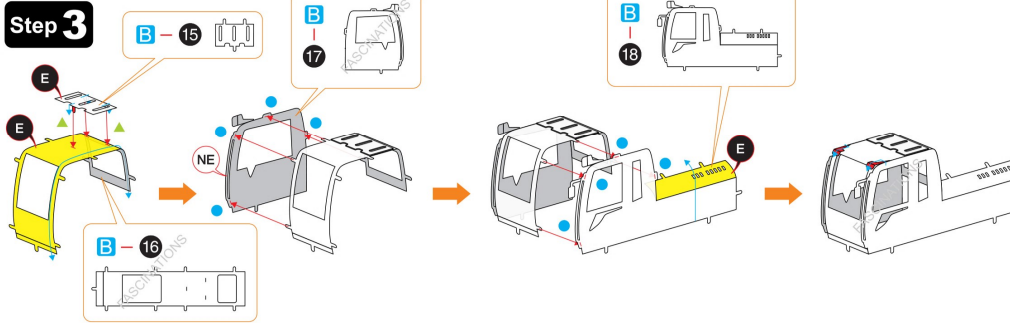
#### Step 1



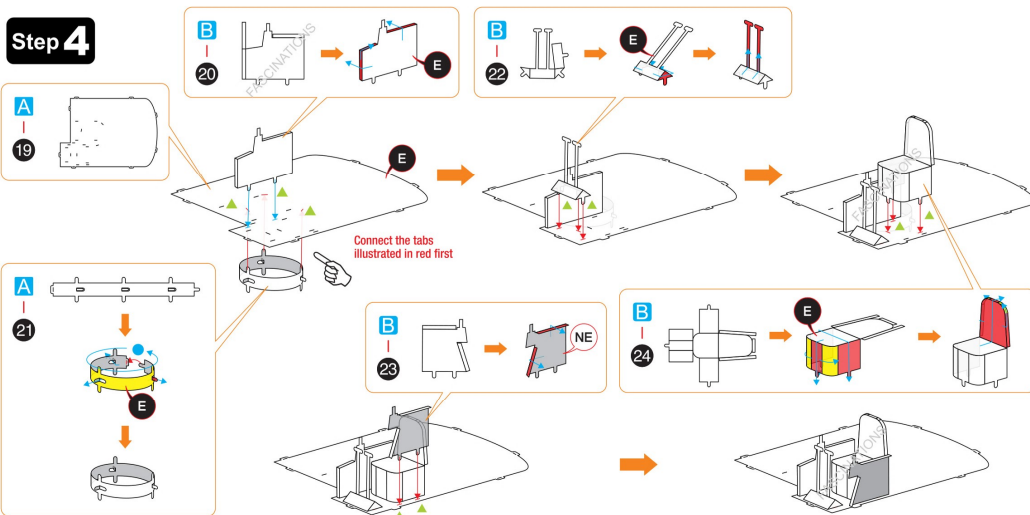
#### Step 2



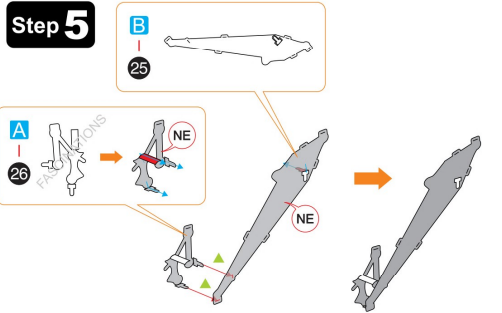
#### Step 3



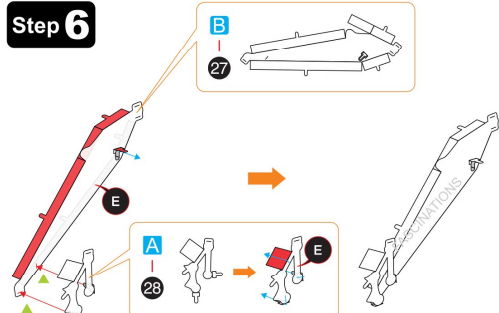
Step 4



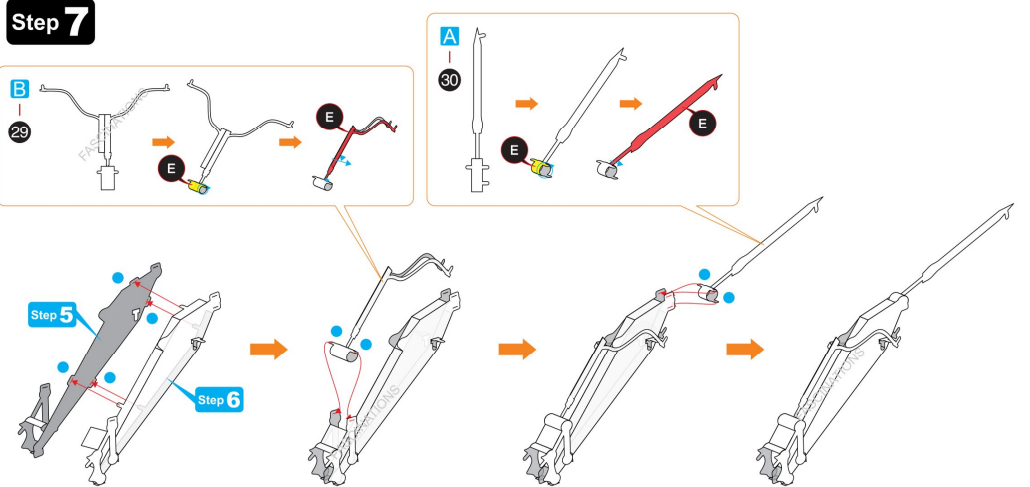
Step 5



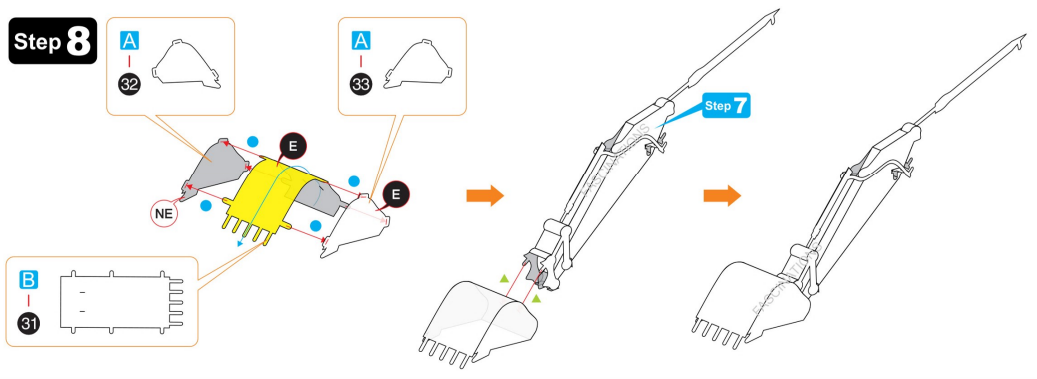
Step 6



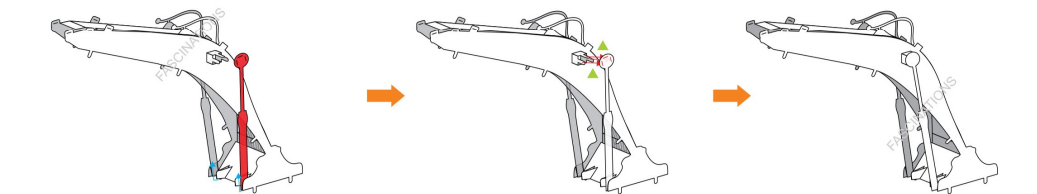
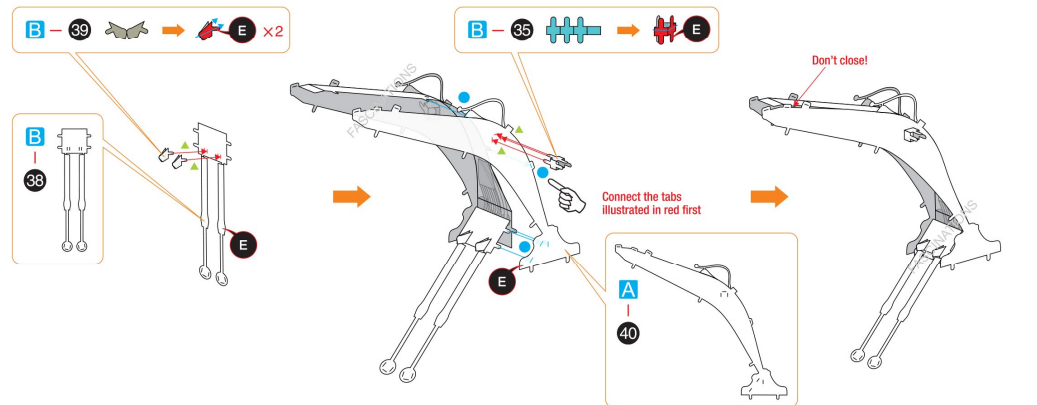
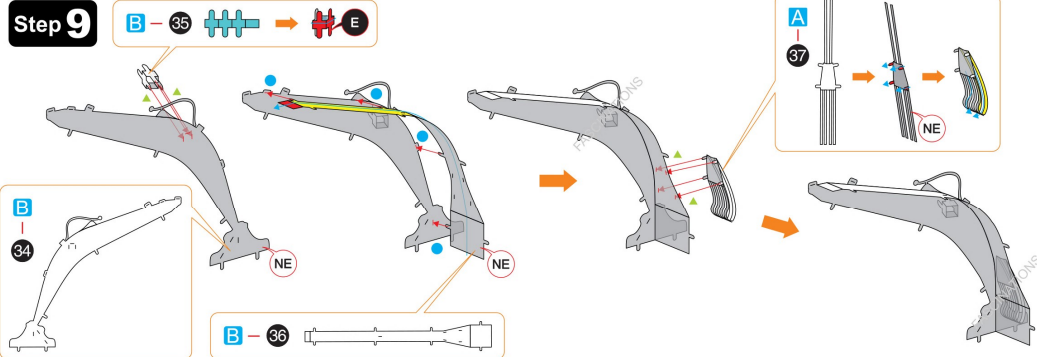
Step 7



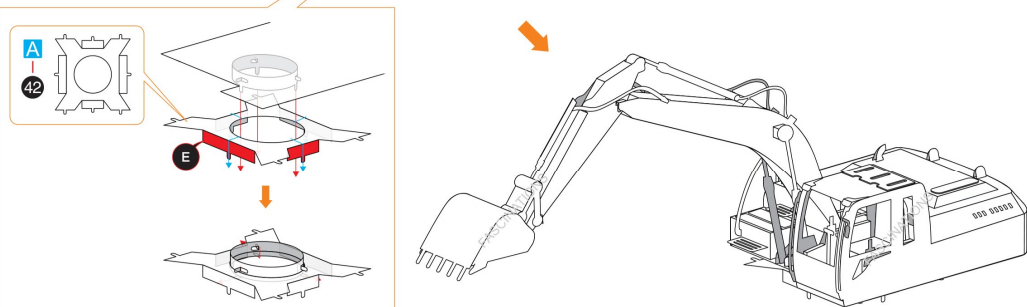
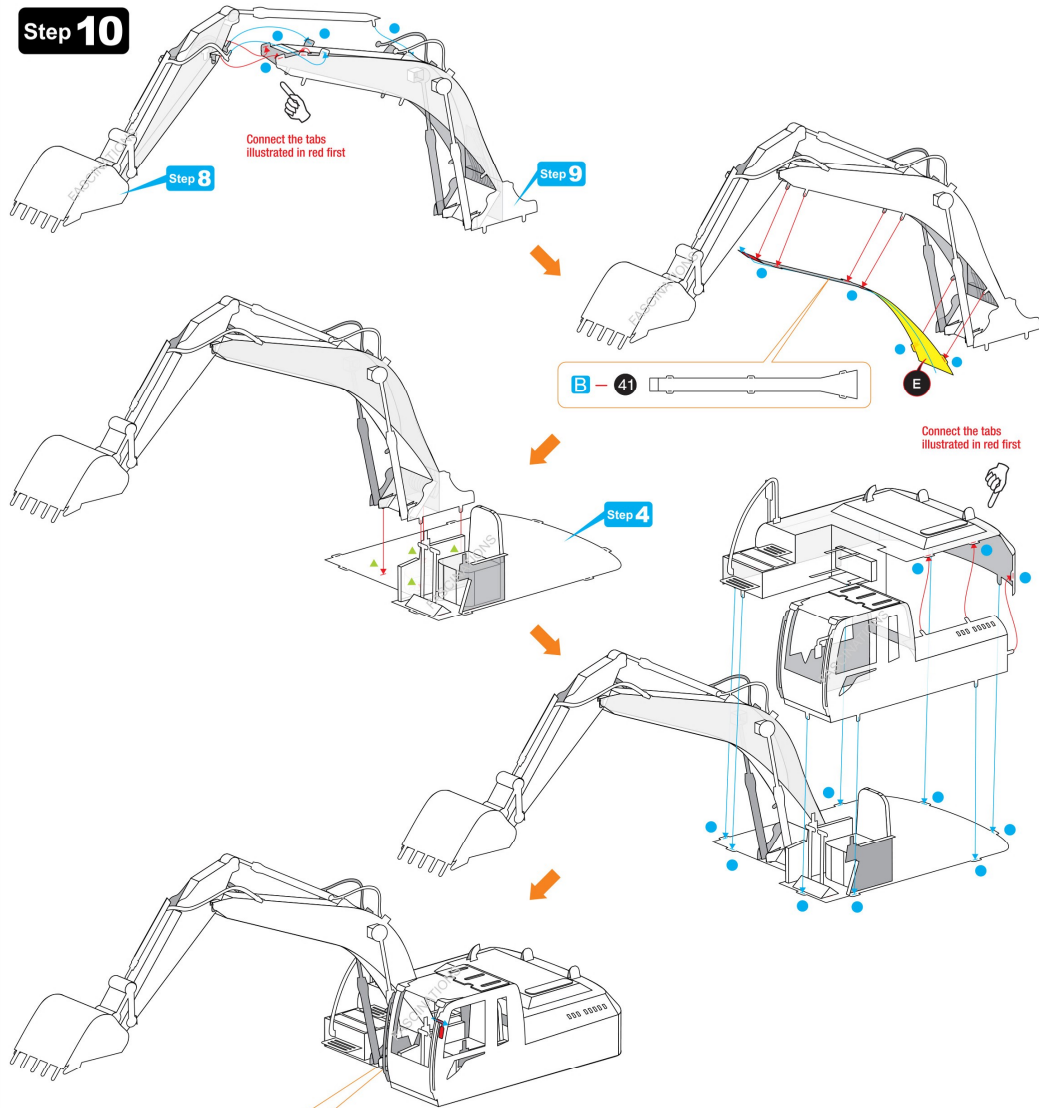
Step 8



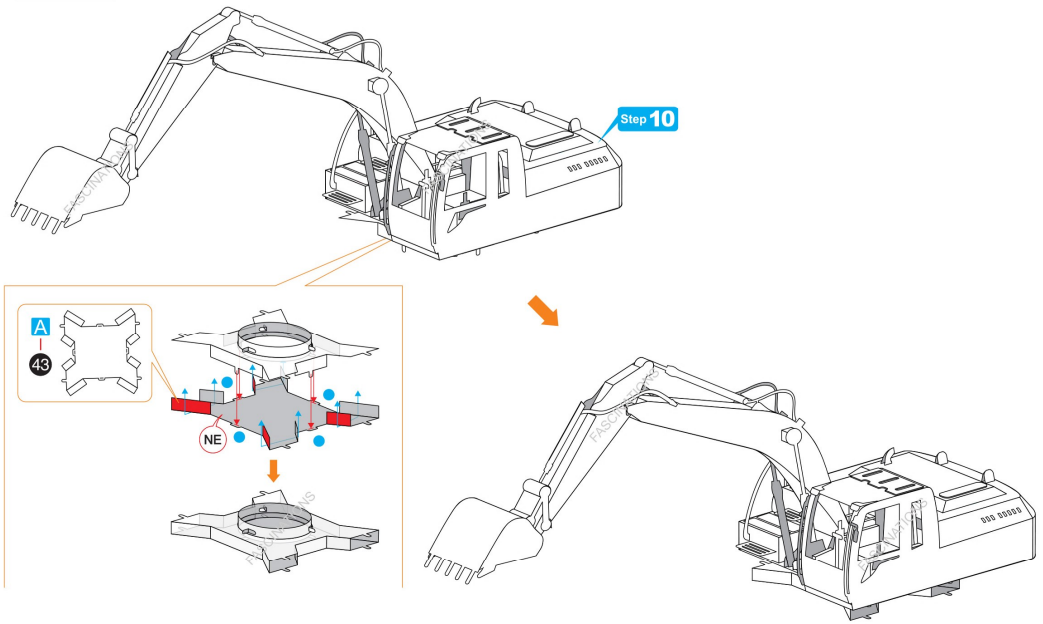
Step 9



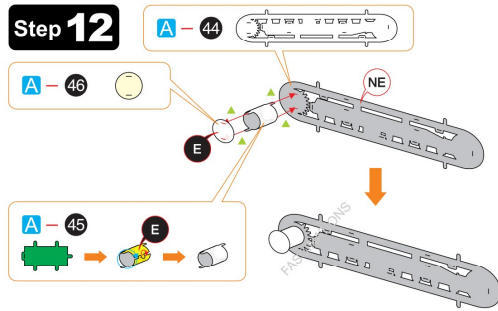
**Step 10**



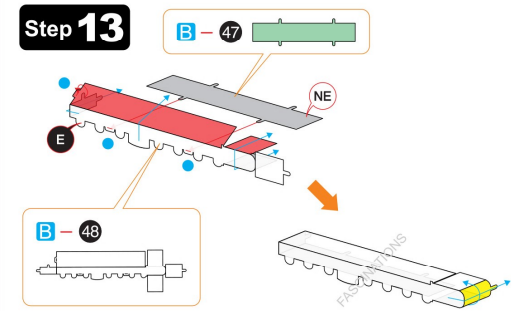
**Step 11**



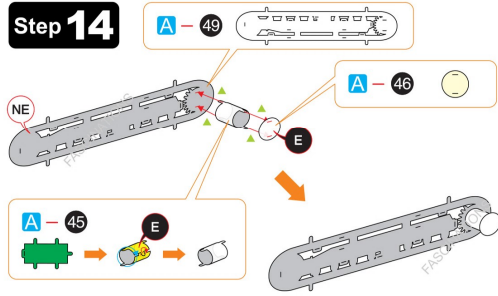
**Step 12**



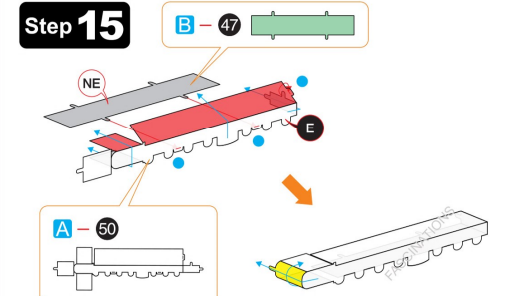
**Step 13**



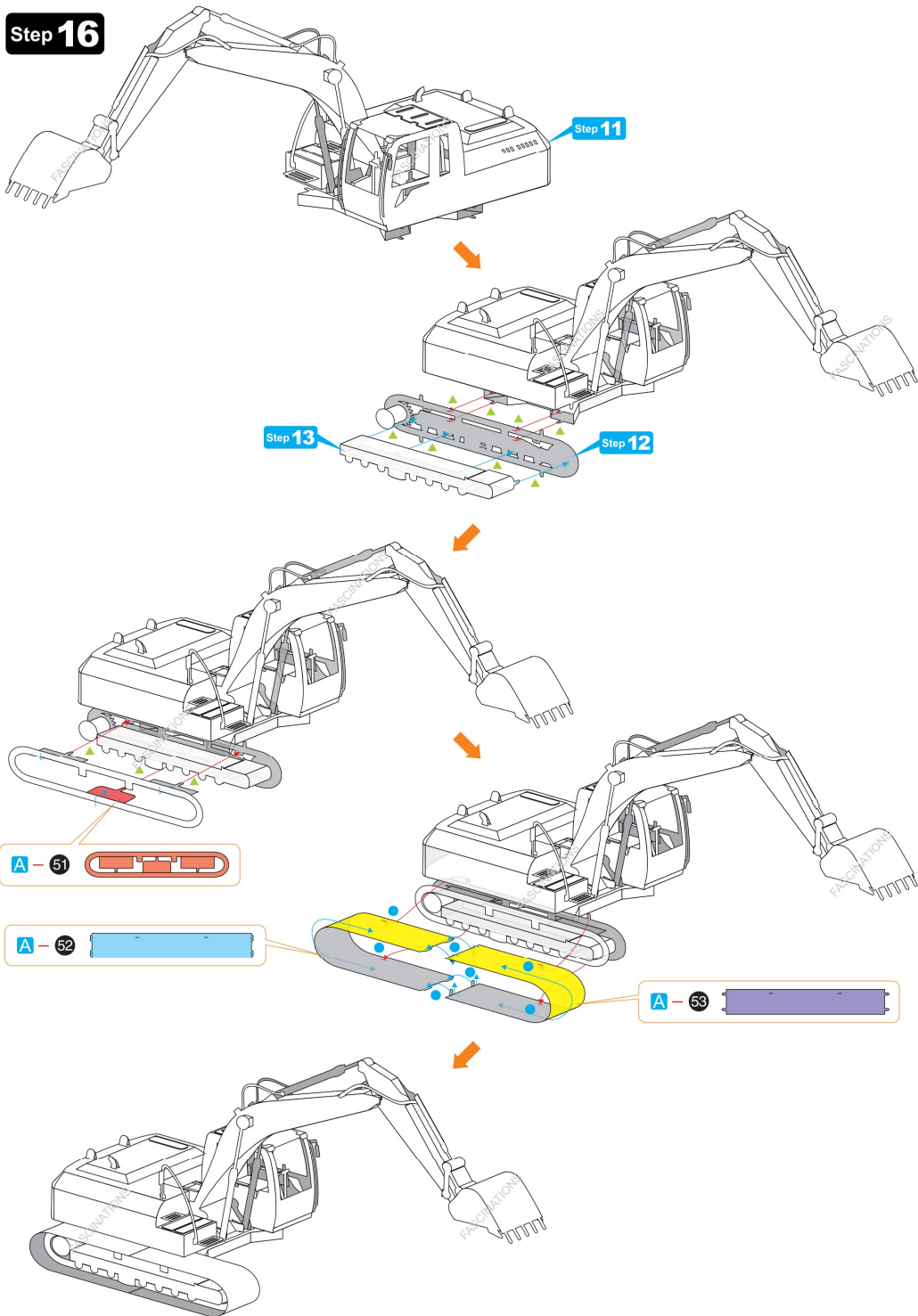
**Step 14**



**Step 15**



**Step 16**



**Step 17**

