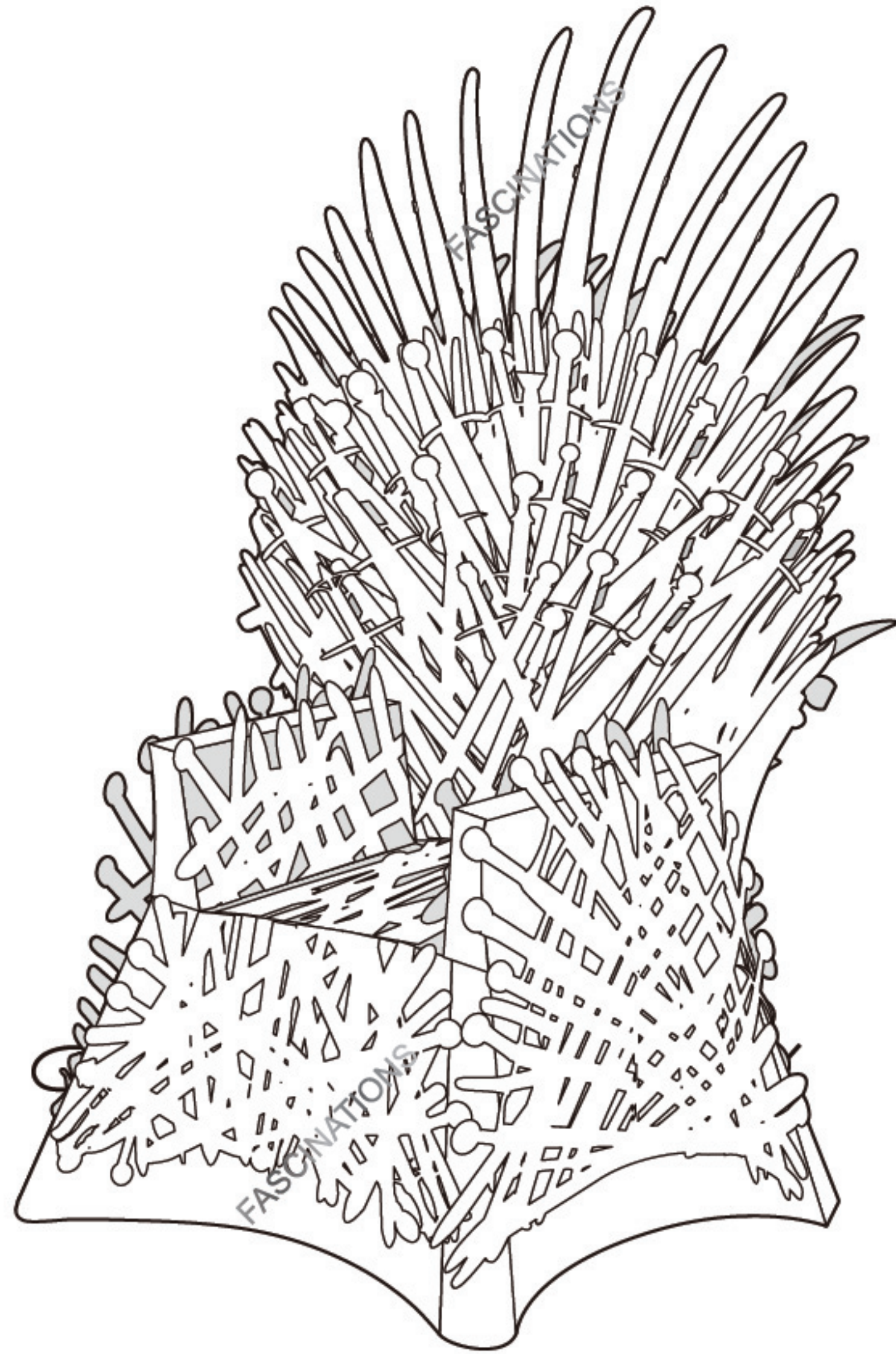




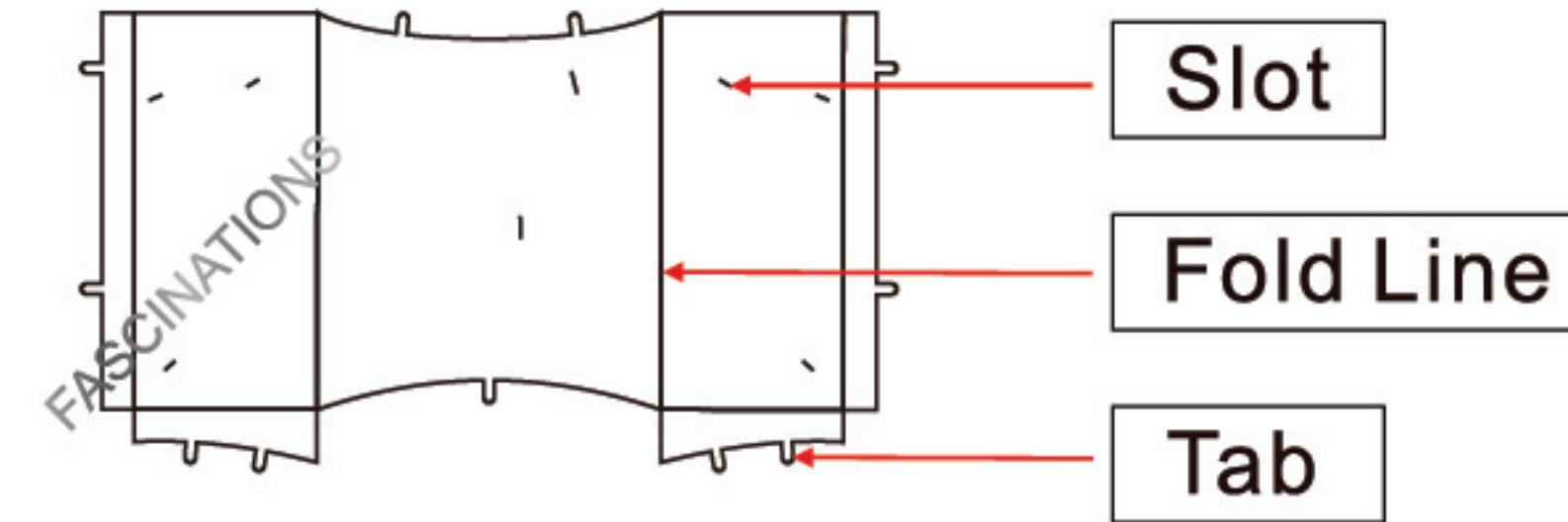
It is highly recommended that you visit  
[www.metalearth.com/360/icx122](http://www.metalearth.com/360/icx122)  
to see the completed model before assembling your own

ICX122



IRON THRONE

### TO CREATE THE BEST CONNECTIONS



#### Legends:

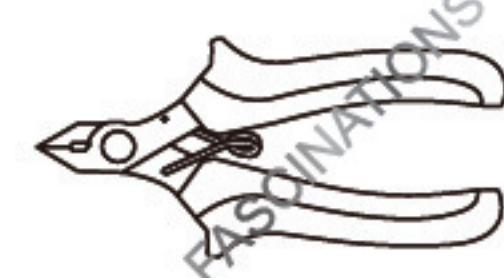
- E Engraved side
- NE Non-engraved side
- Attention point
- Insert tab and bend 90 degrees
- ▲ Insert tab and twist 90 degrees

#### Assembly tip:

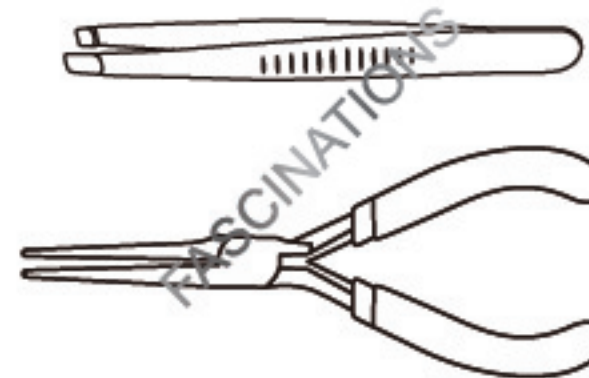
If needed, slightly twist tabs to hold parts together then untwist and bend them down for a nice finish

#### Recommended tools:

-Wire cutters: helpful for taking parts from the metal sheets.

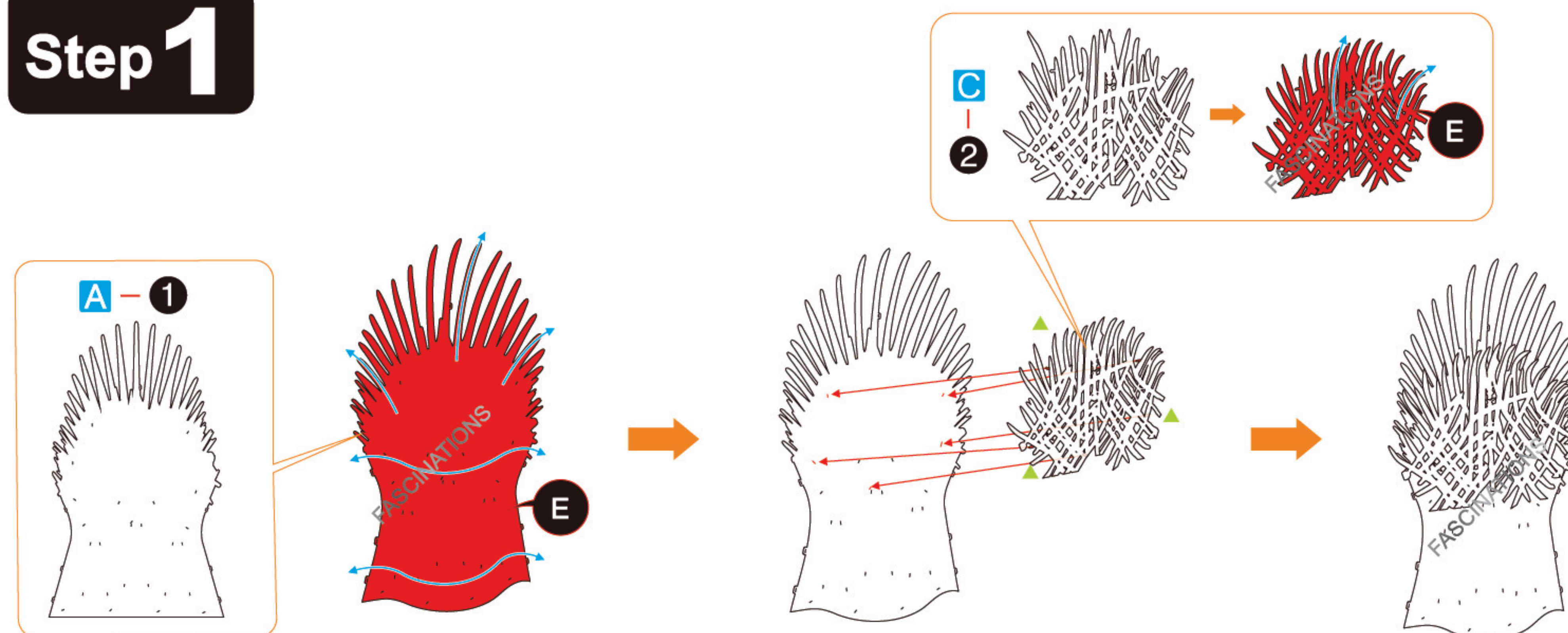


-Tweezers or needle nose pliers: helpful for folding parts, bending and twisting tabs.



### ASSEMBLY STEPS

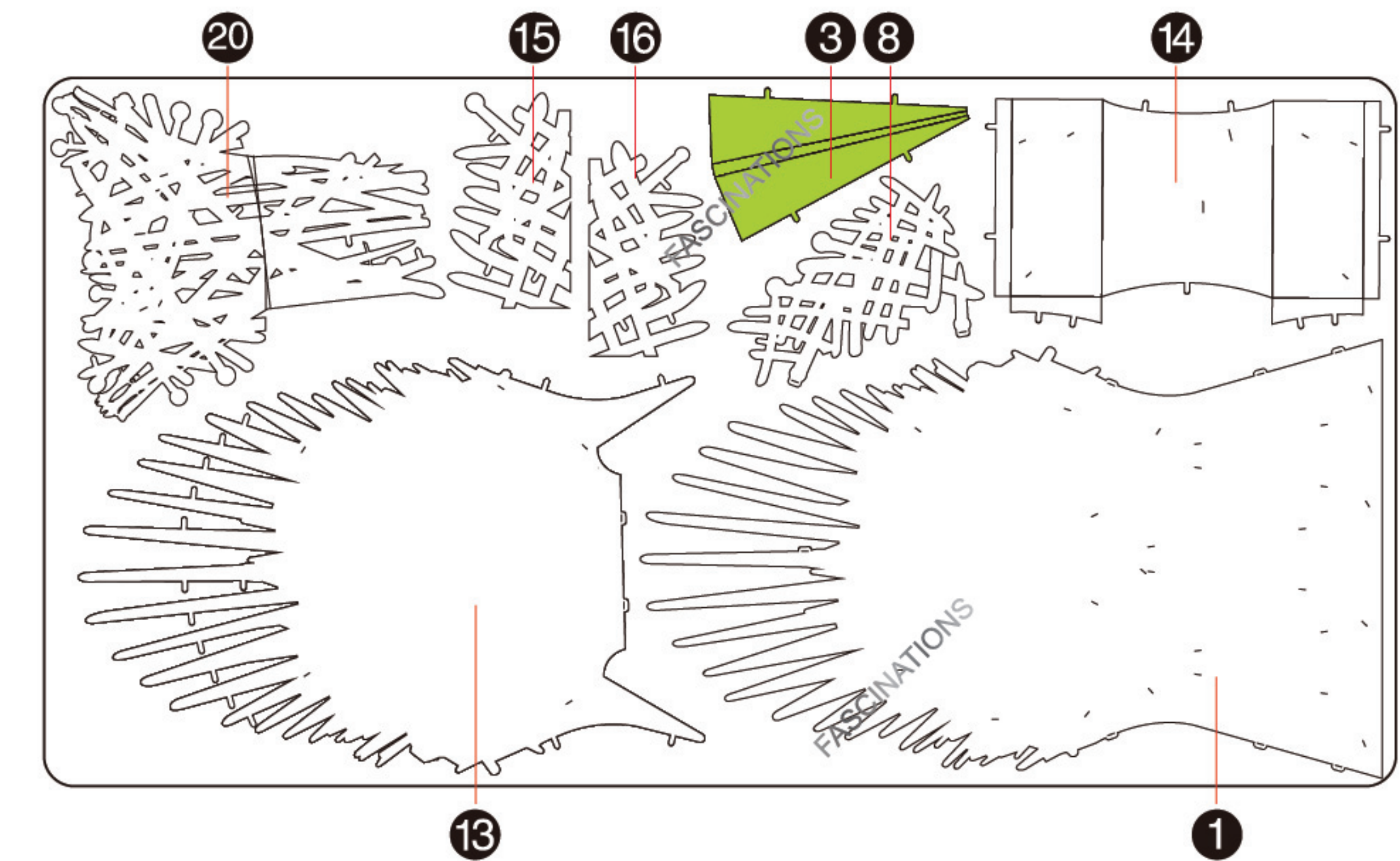
#### Step 1



Go to [www.metalearth.com/360/icx122](http://www.metalearth.com/360/icx122) to see the zoomable PDF version of this instruction sheet

Page 2

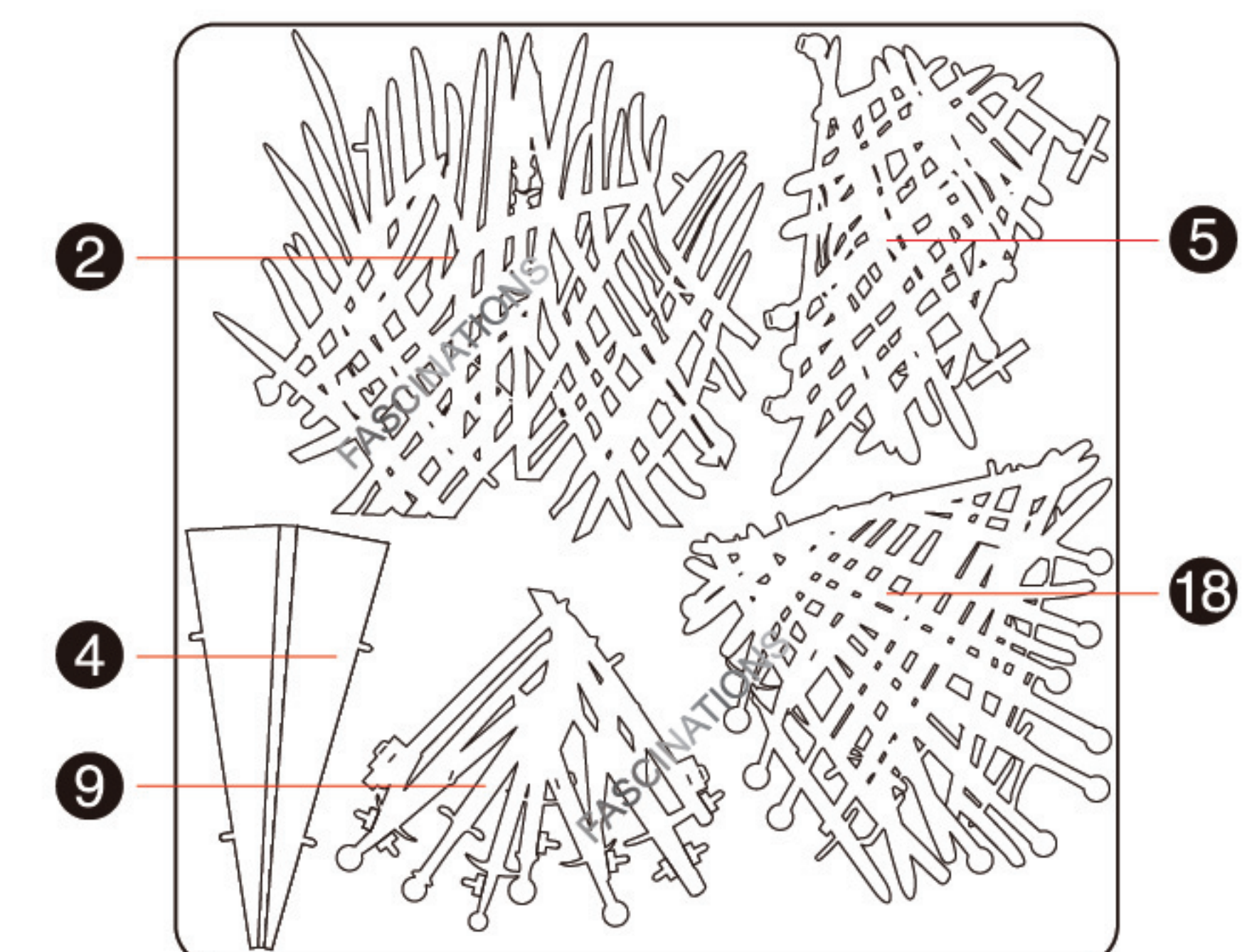
### METAL SHEET A



### METAL SHEET B



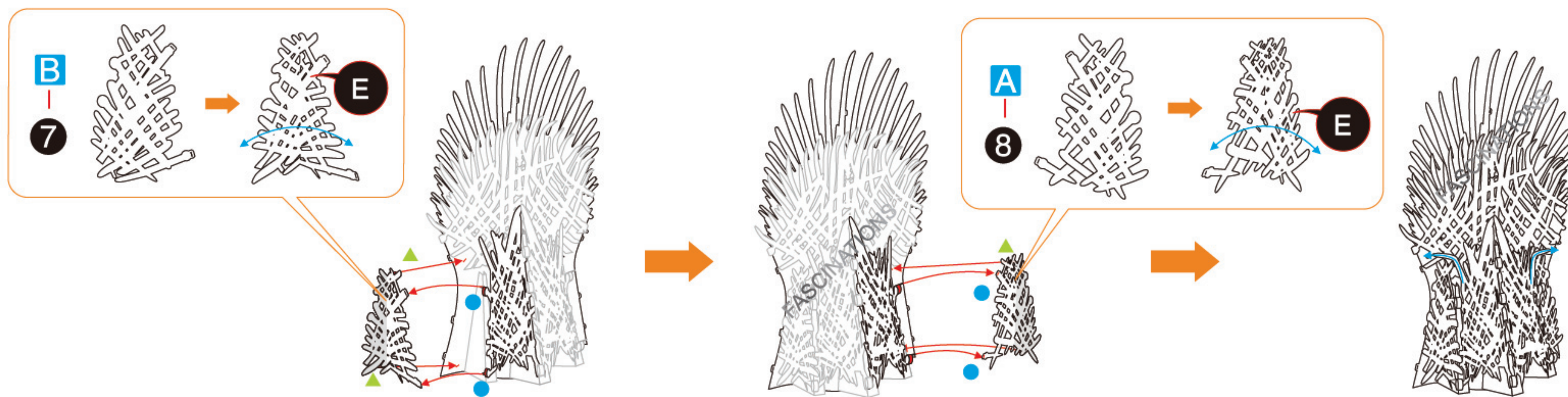
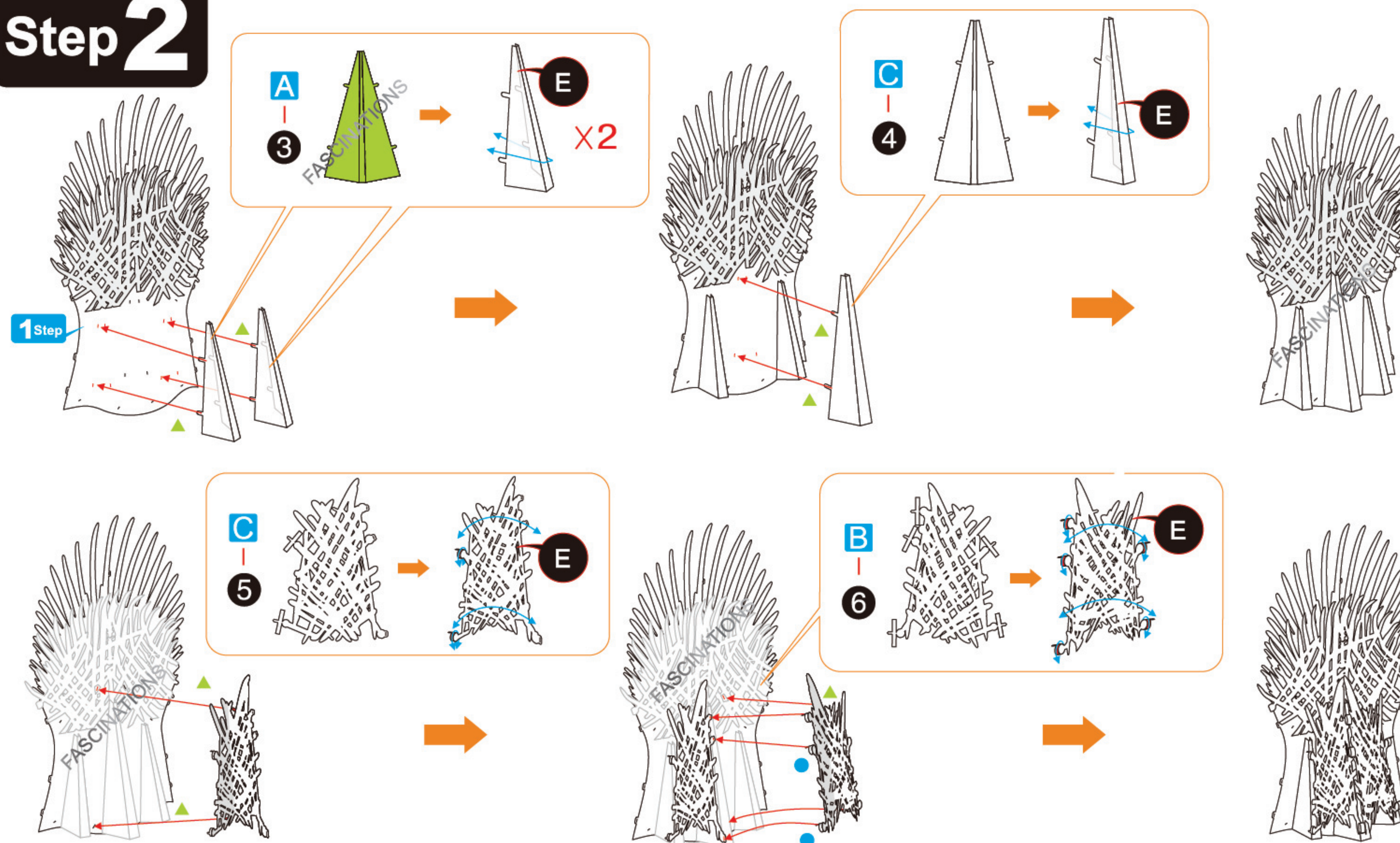
### METAL SHEET C



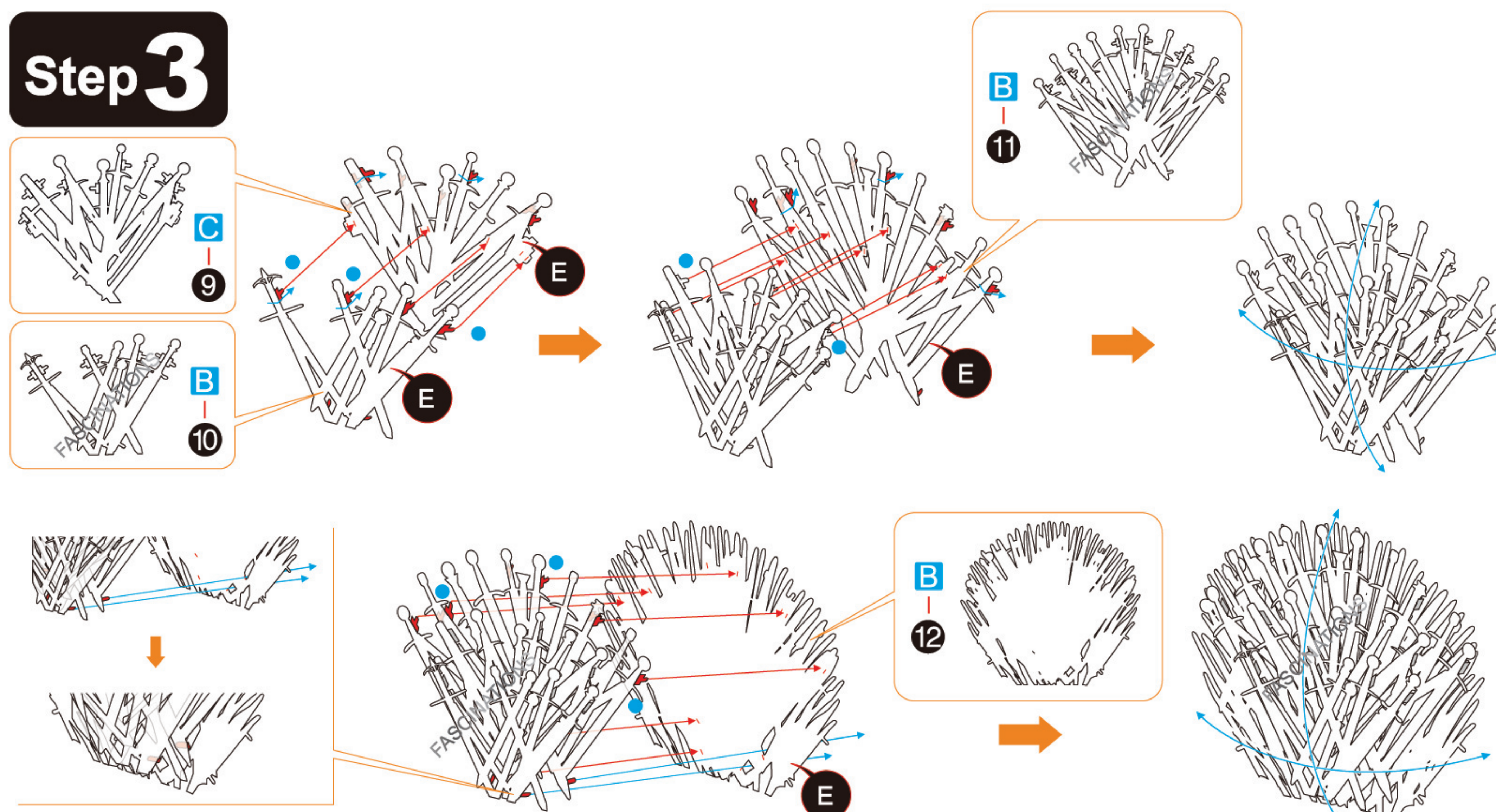
In order to avoid possible injury from sharp edges, please carefully discard the metal sheets after parts have been removed.



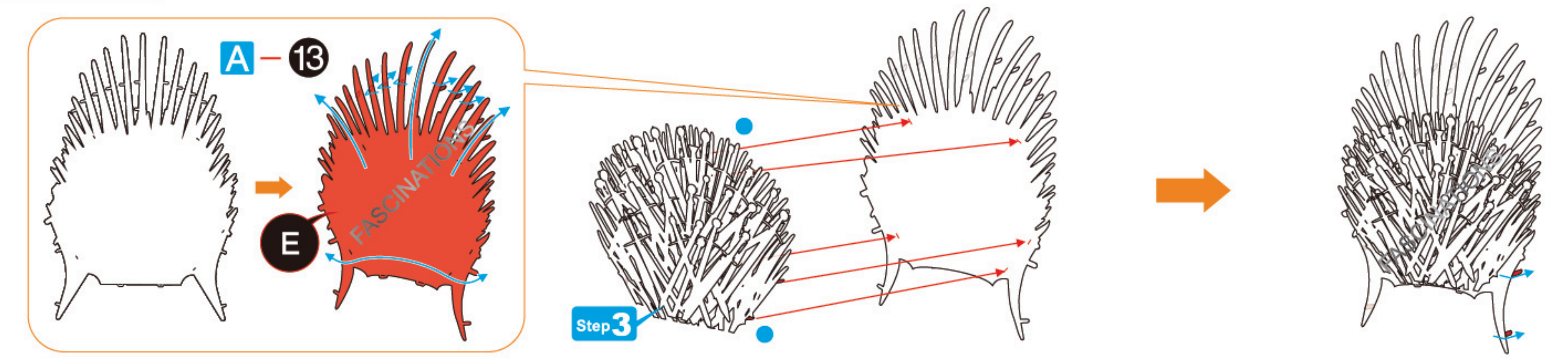
## Step 2



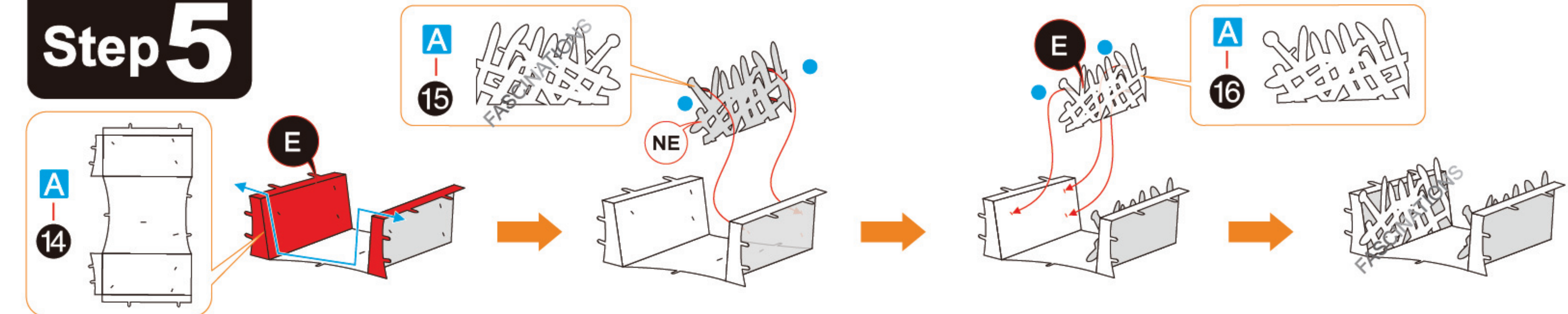
## Step 3



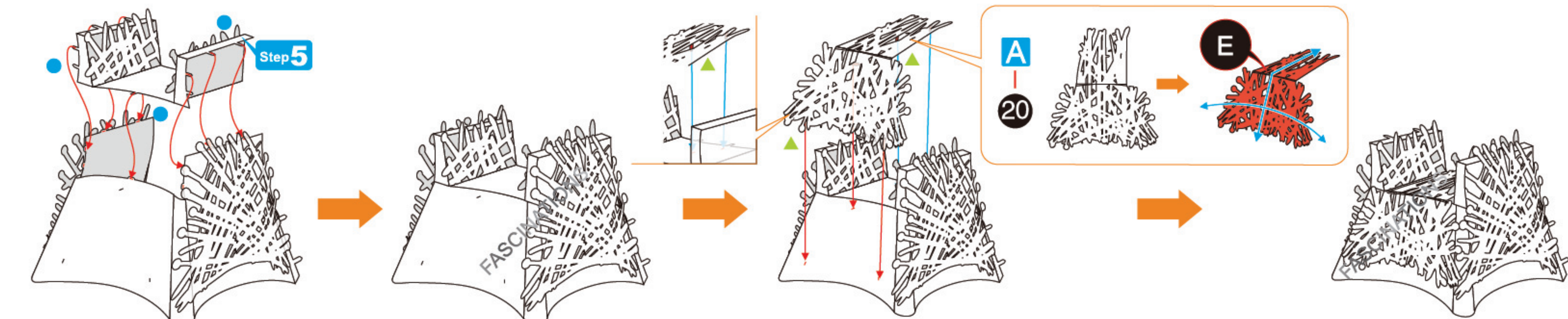
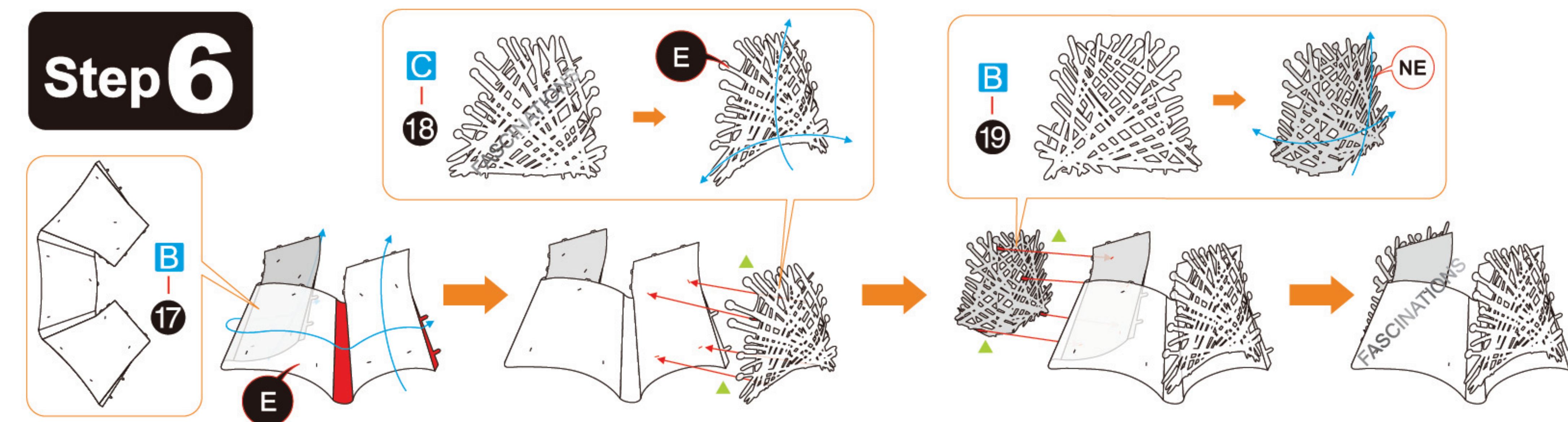
## Step 4



## Step 5



## Step 6



## Step 7

