



It is highly recommended that you visit  
[www.metal-earth.com/360/icx123](http://www.metal-earth.com/360/icx123)  
to see the completed model before assembling your own

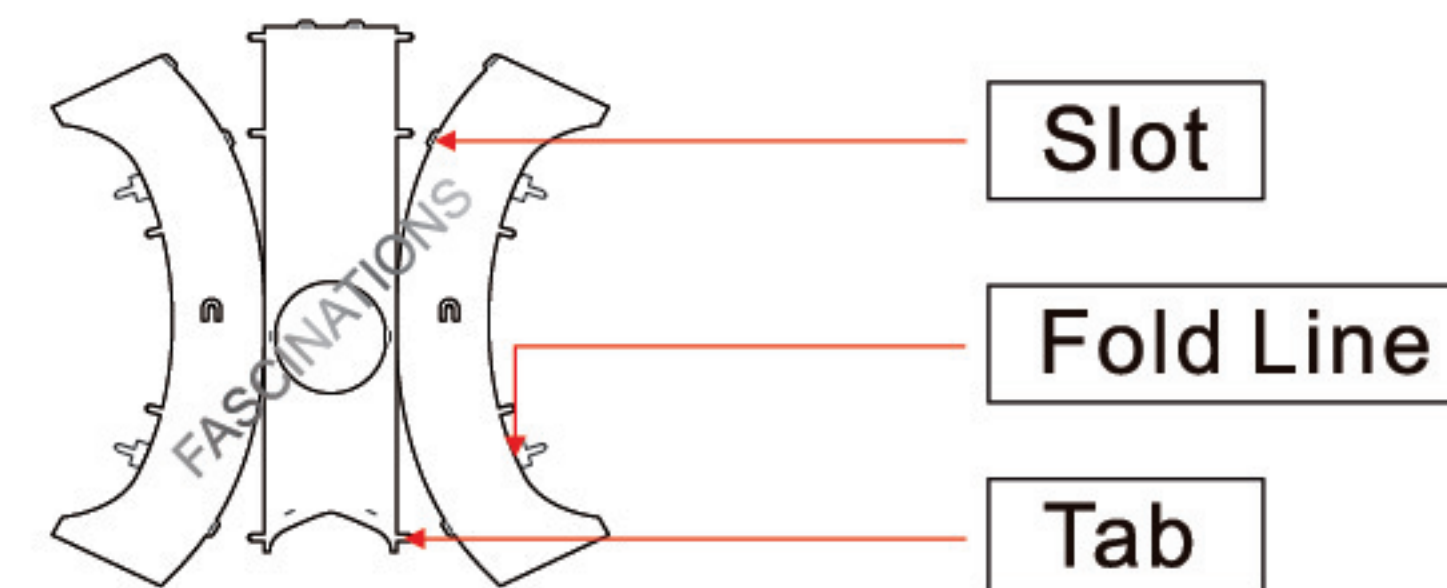


ICX123



THE MOUNTAIN

### TO CREATE THE BEST CONNECTIONS



#### Legends:

- E** Engraved/Color side
- NE** Non-engraved/Silver side
- Attention point
- Insert tab and bend 90 degrees
- Insert tab and twist 90 degrees

#### Assembly tip:

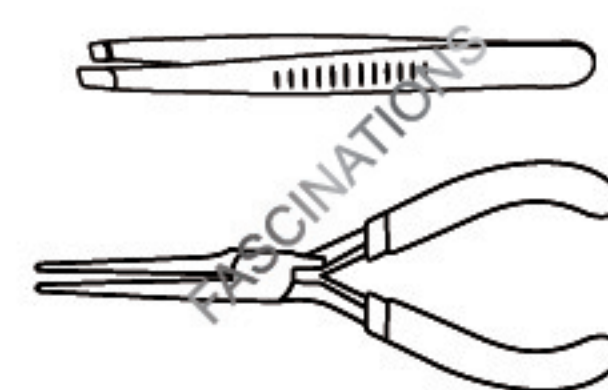
If needed, slightly twist tabs to hold parts together then untwist and bend them down for a nice finish

#### Recommended tools:

-Wire cutters: helpful for taking parts from the metal sheets.

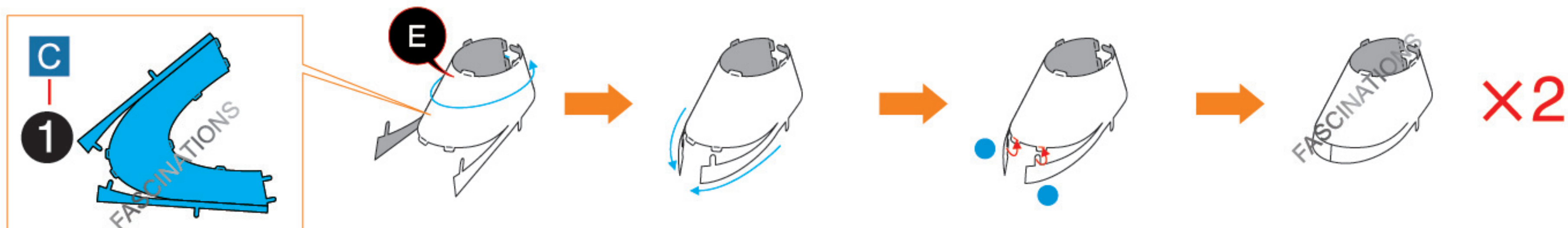


-Tweezers or needle nose pliers: helpful for folding parts, bending and twisting tabs.

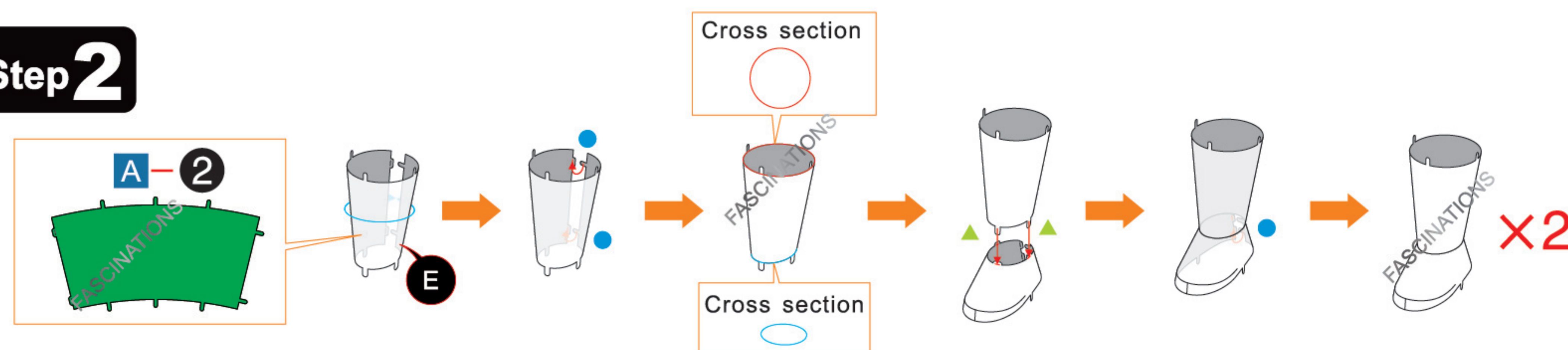


### ASSEMBLY STEPS

Step 1



Step 2



In order to avoid possible injury from sharp edges, please carefully discard the metal sheets after parts have been removed.

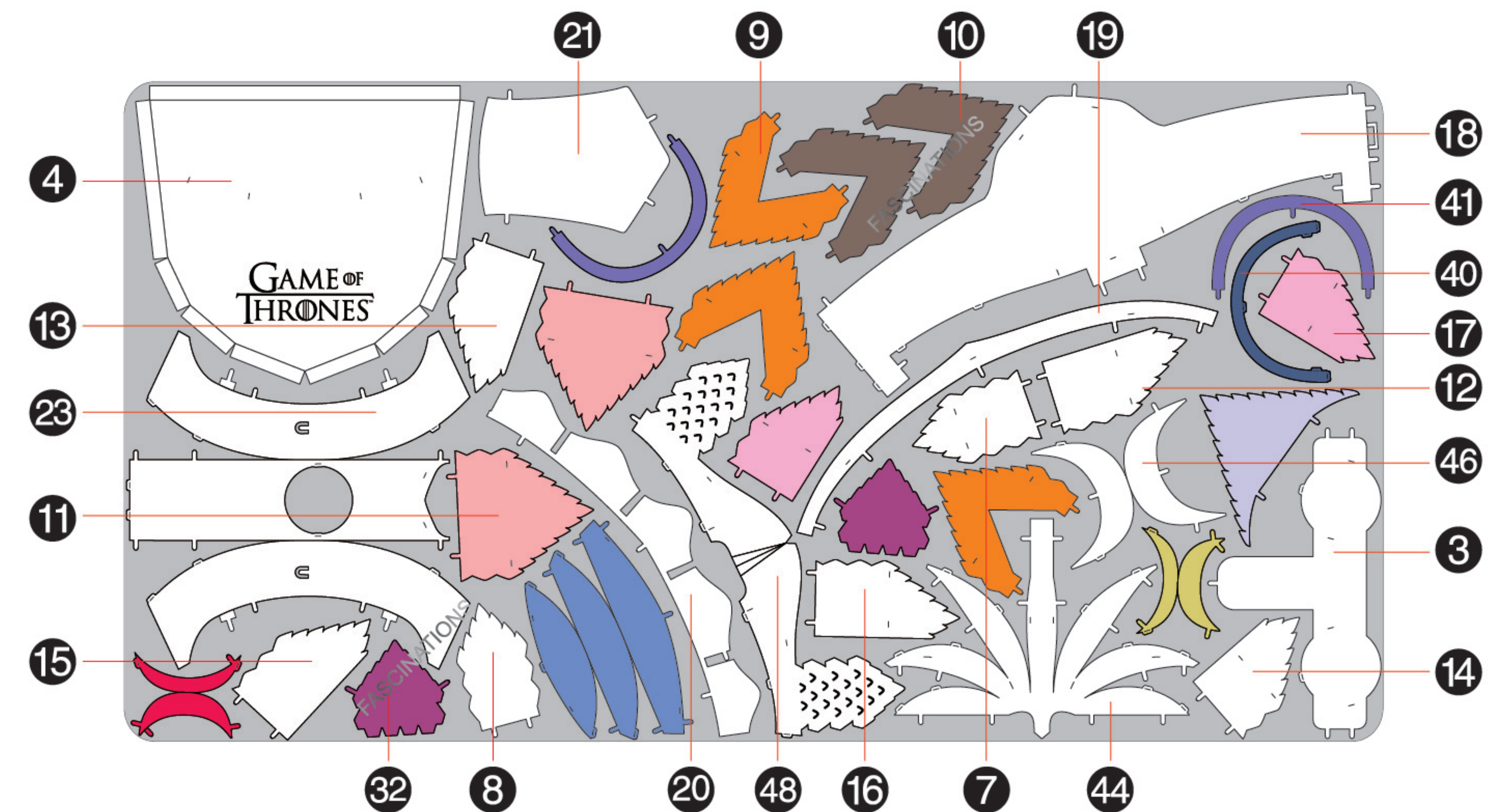
### METAL SHEETS

Parts that are in the same color are duplicates

A



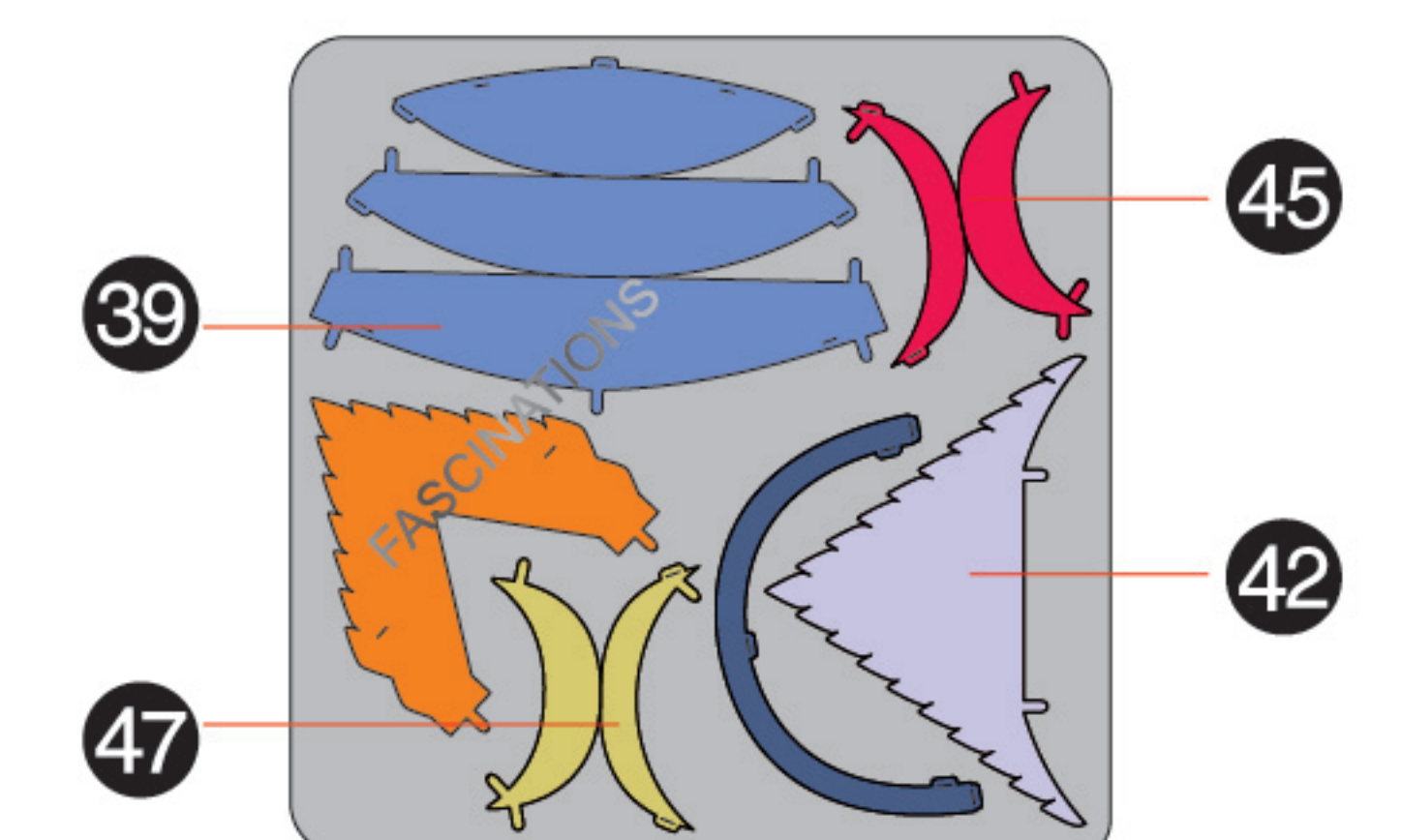
B



C

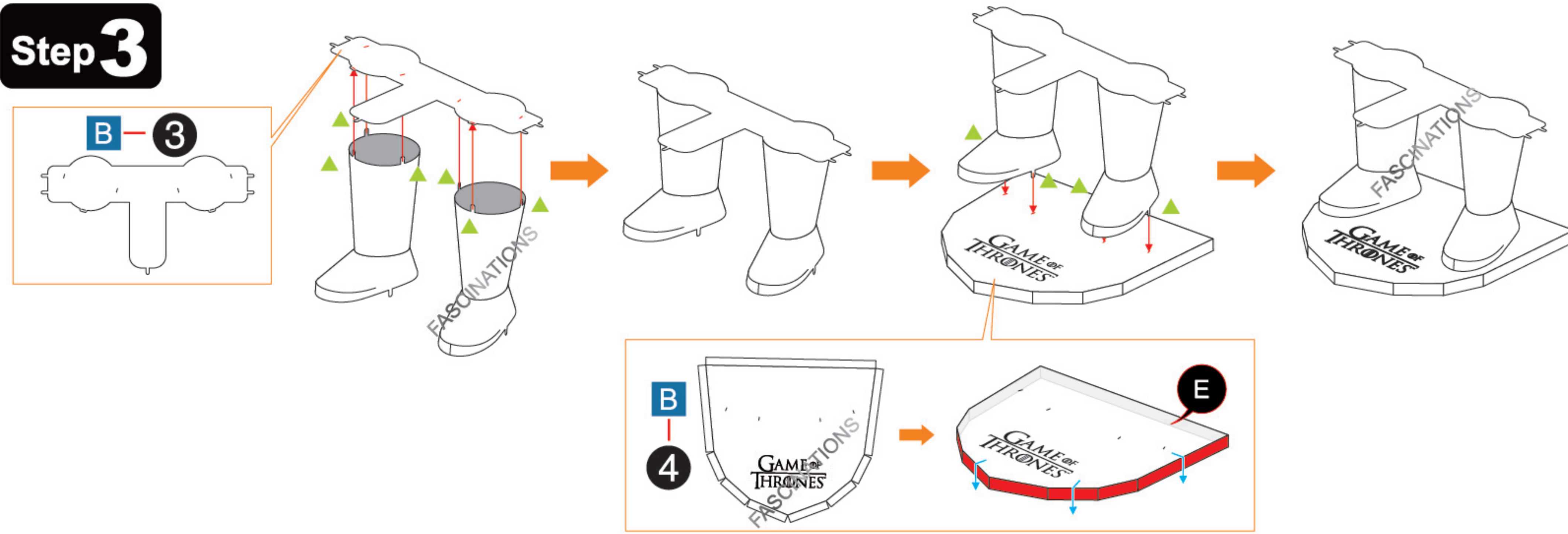


D

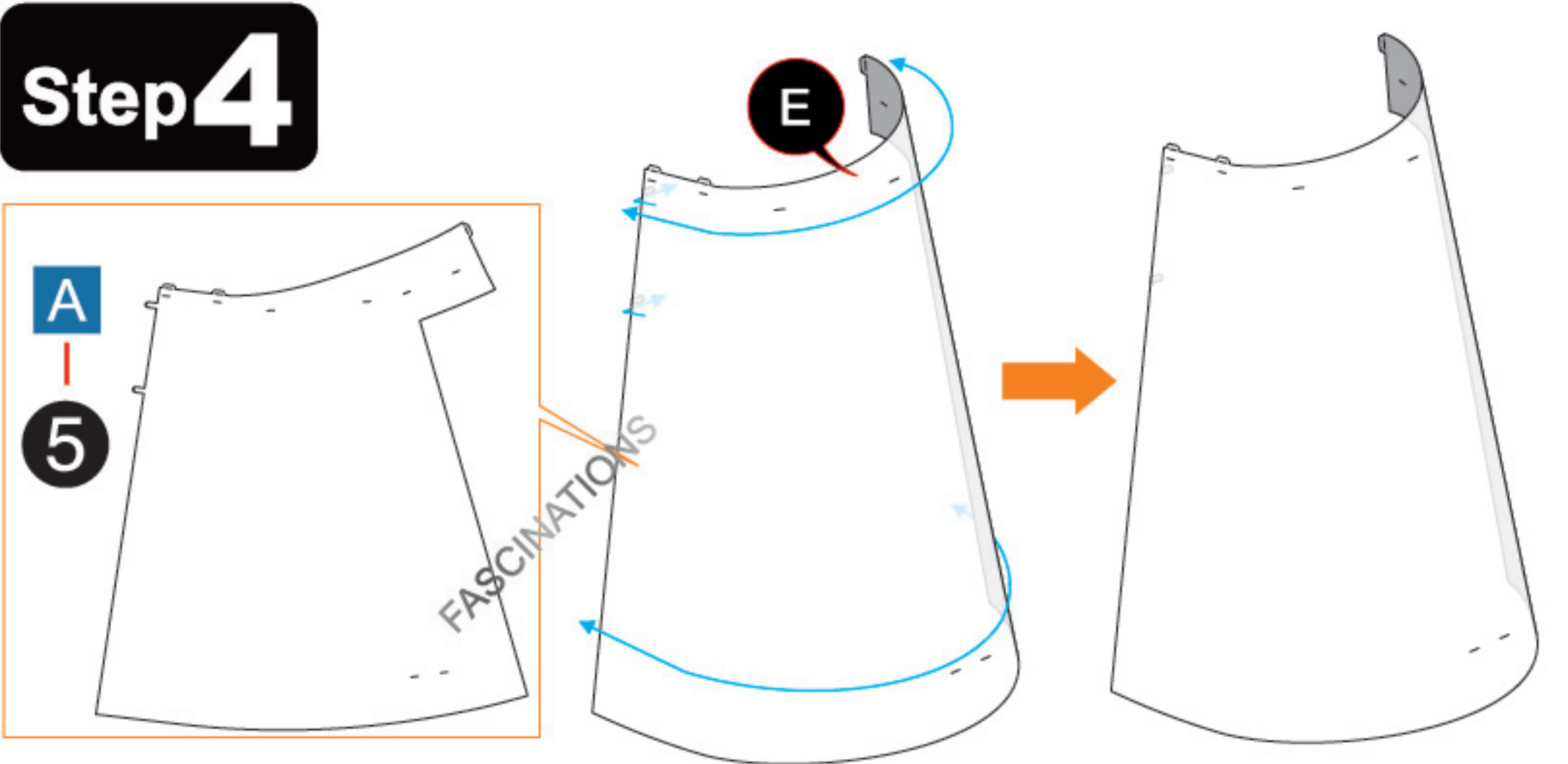




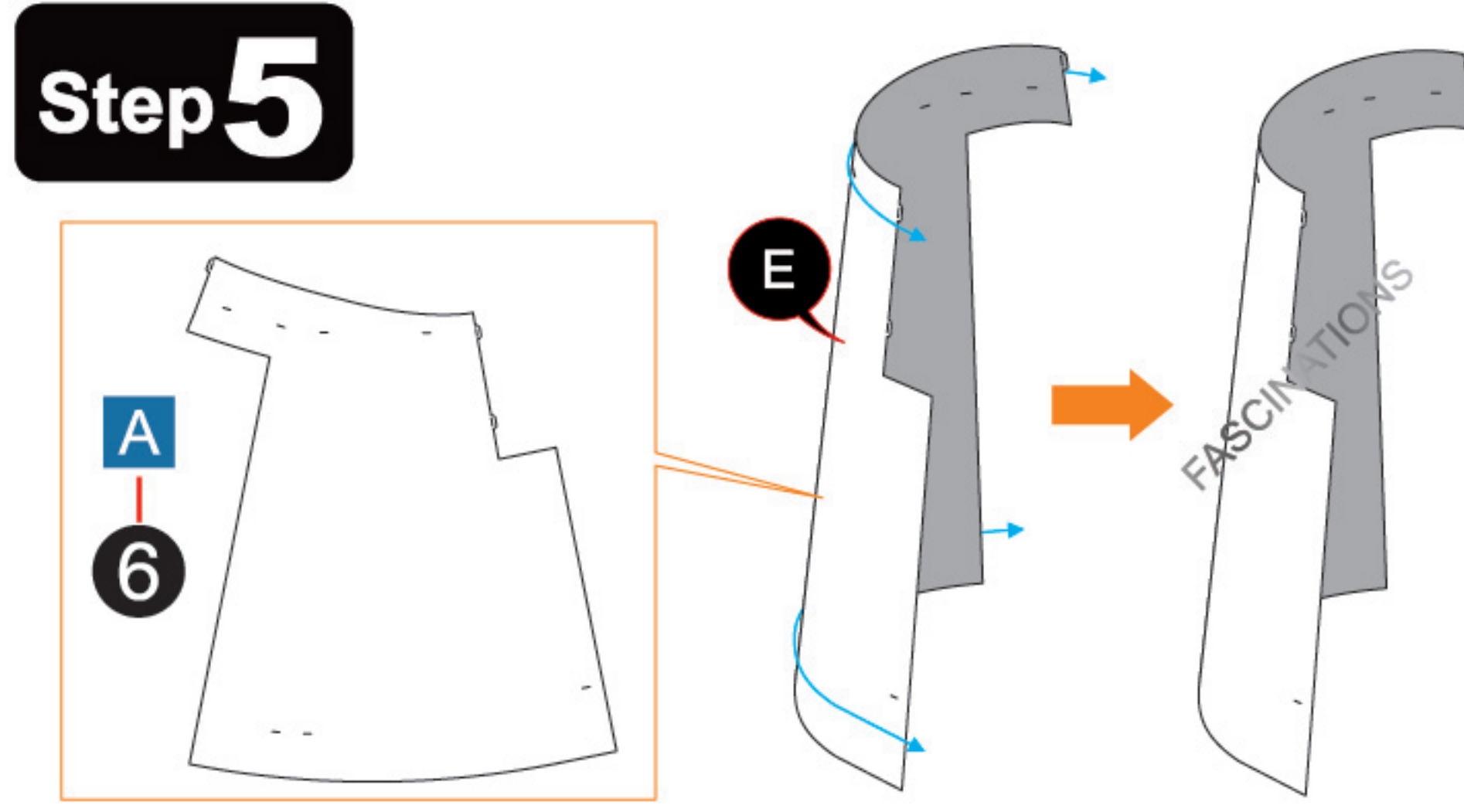
## Step 3



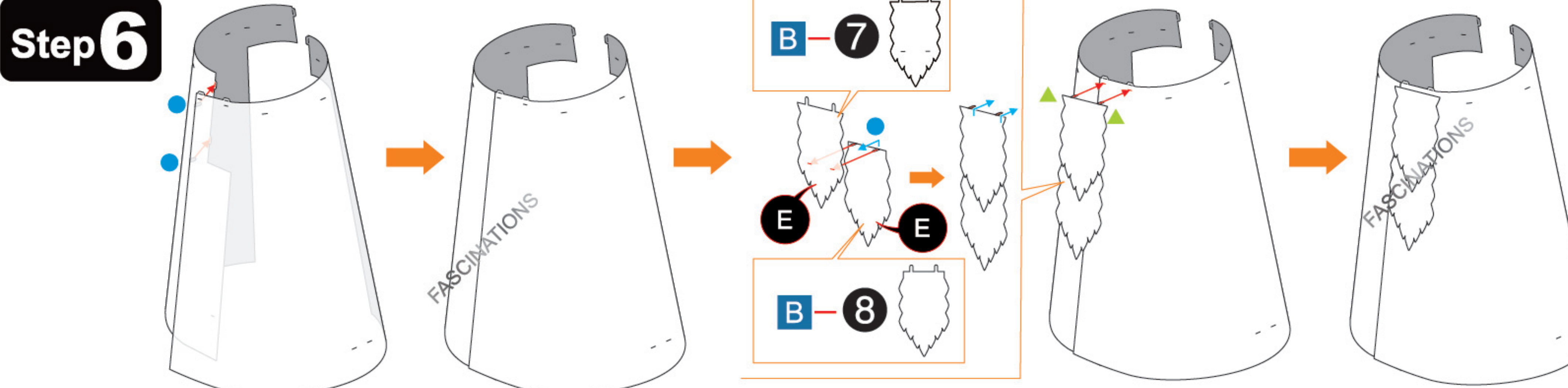
## Step 4



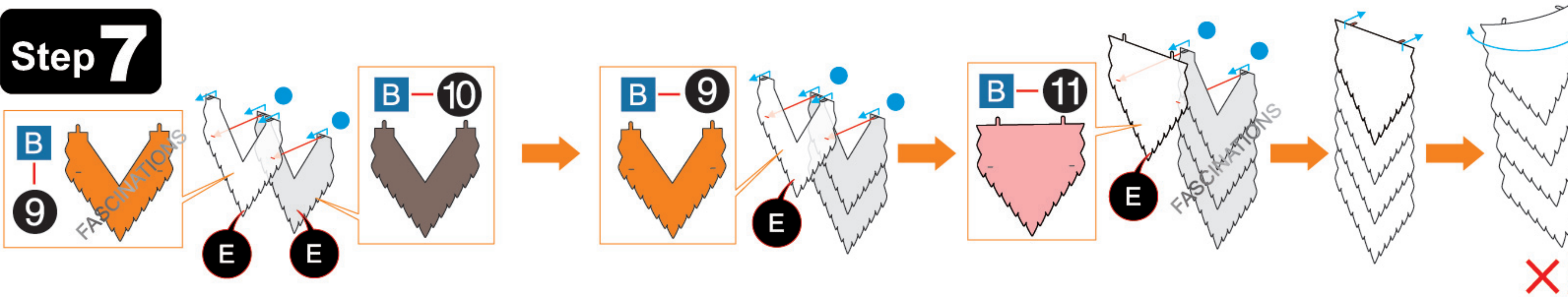
## Step 5



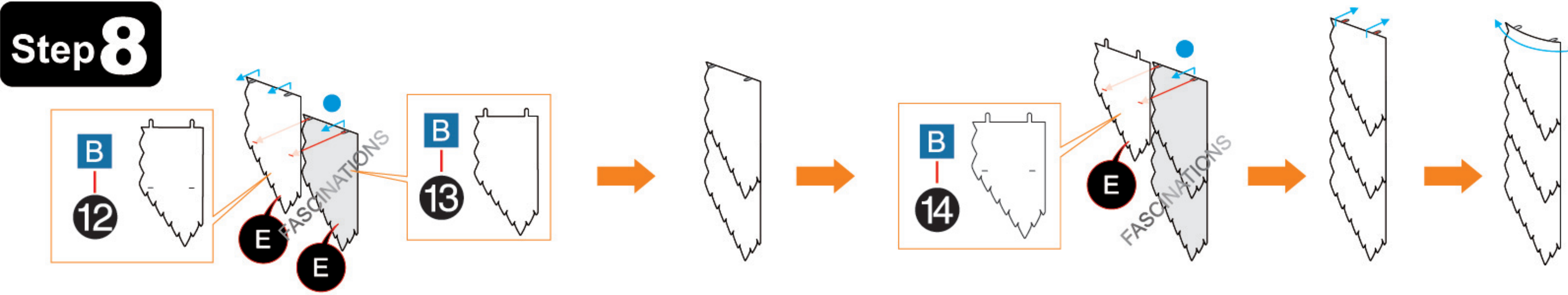
## Step 6



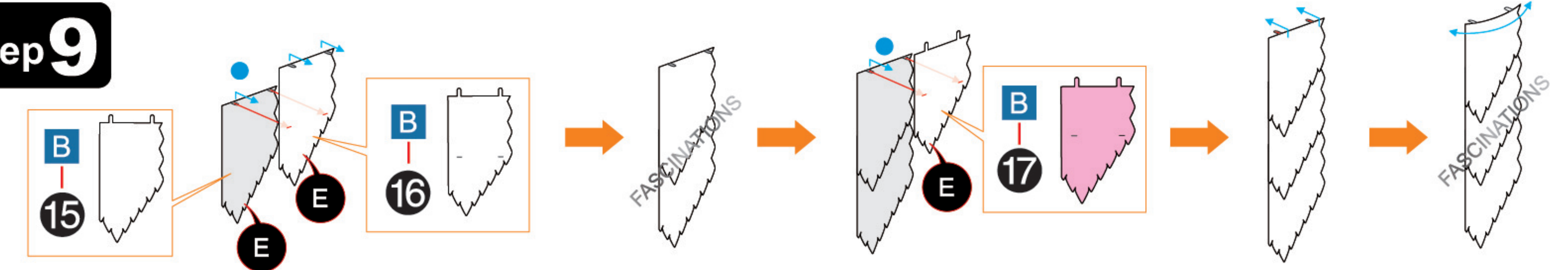
## Step 7



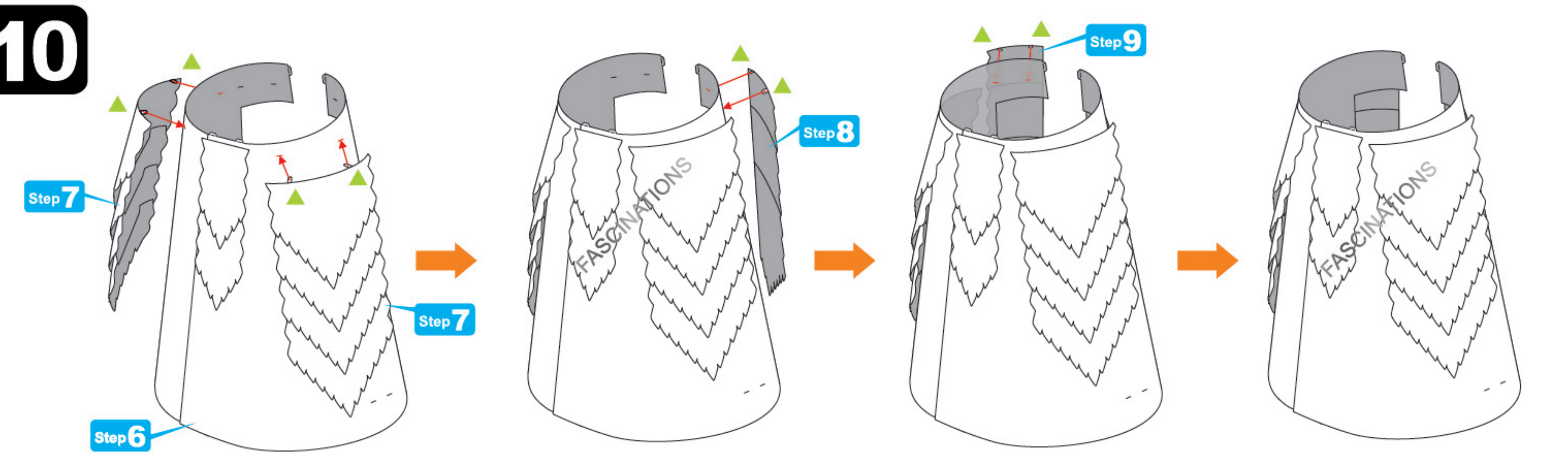
## Step 8



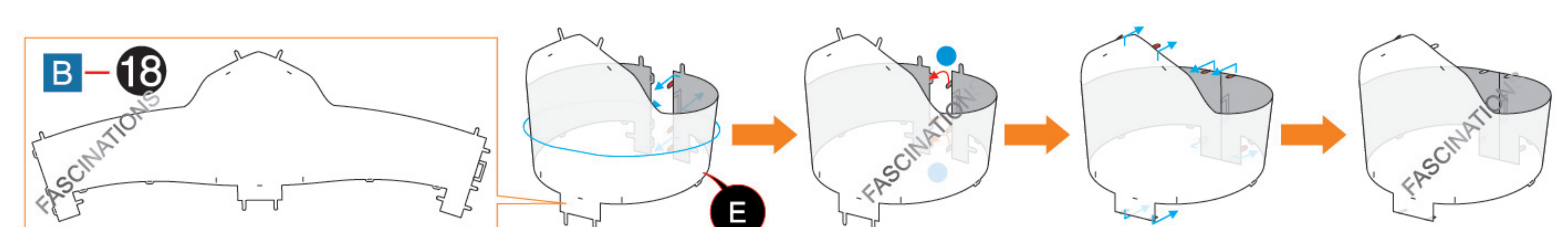
## Step 9



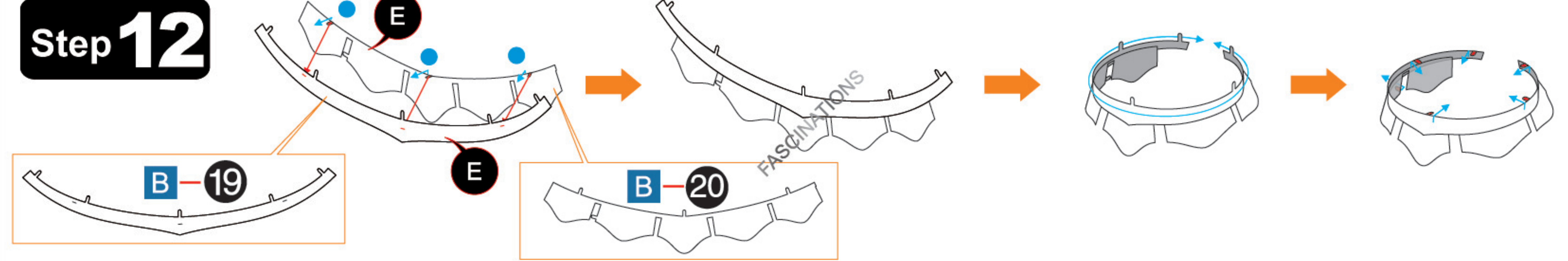
## Step 10



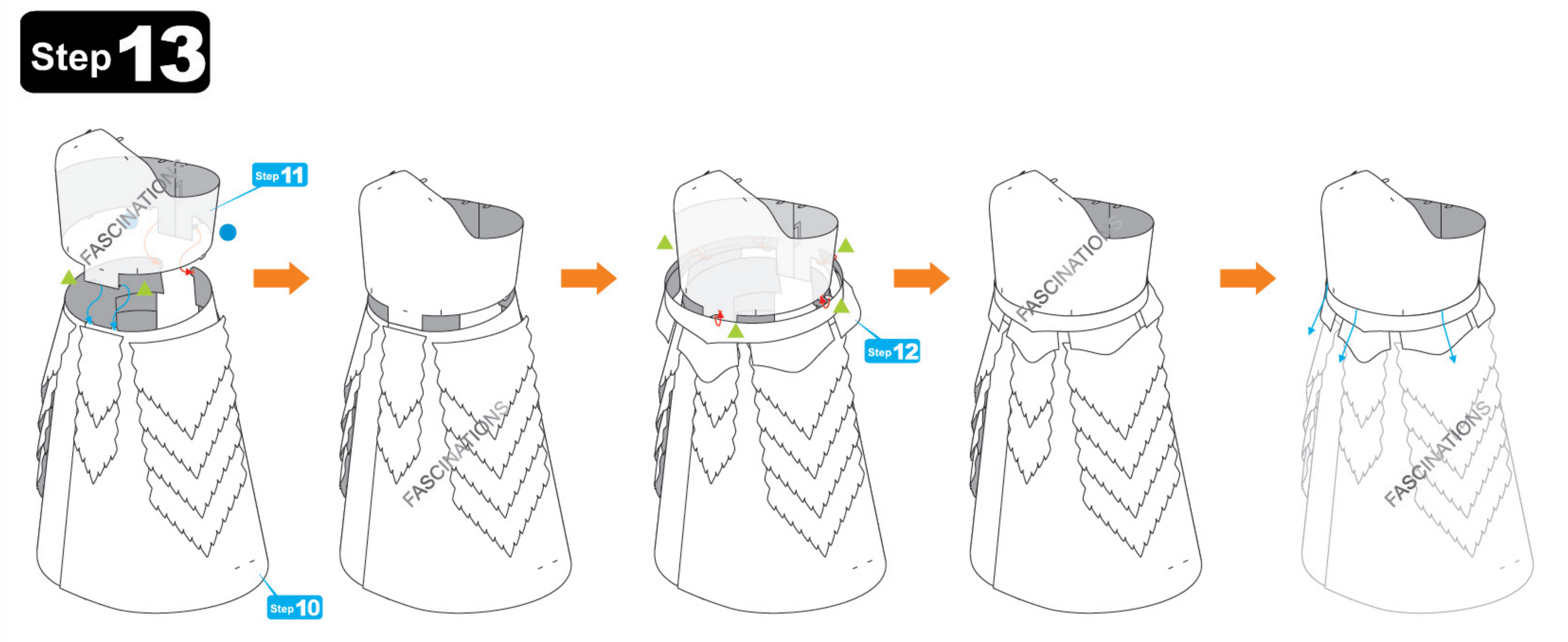
## Step 11



## Step 12

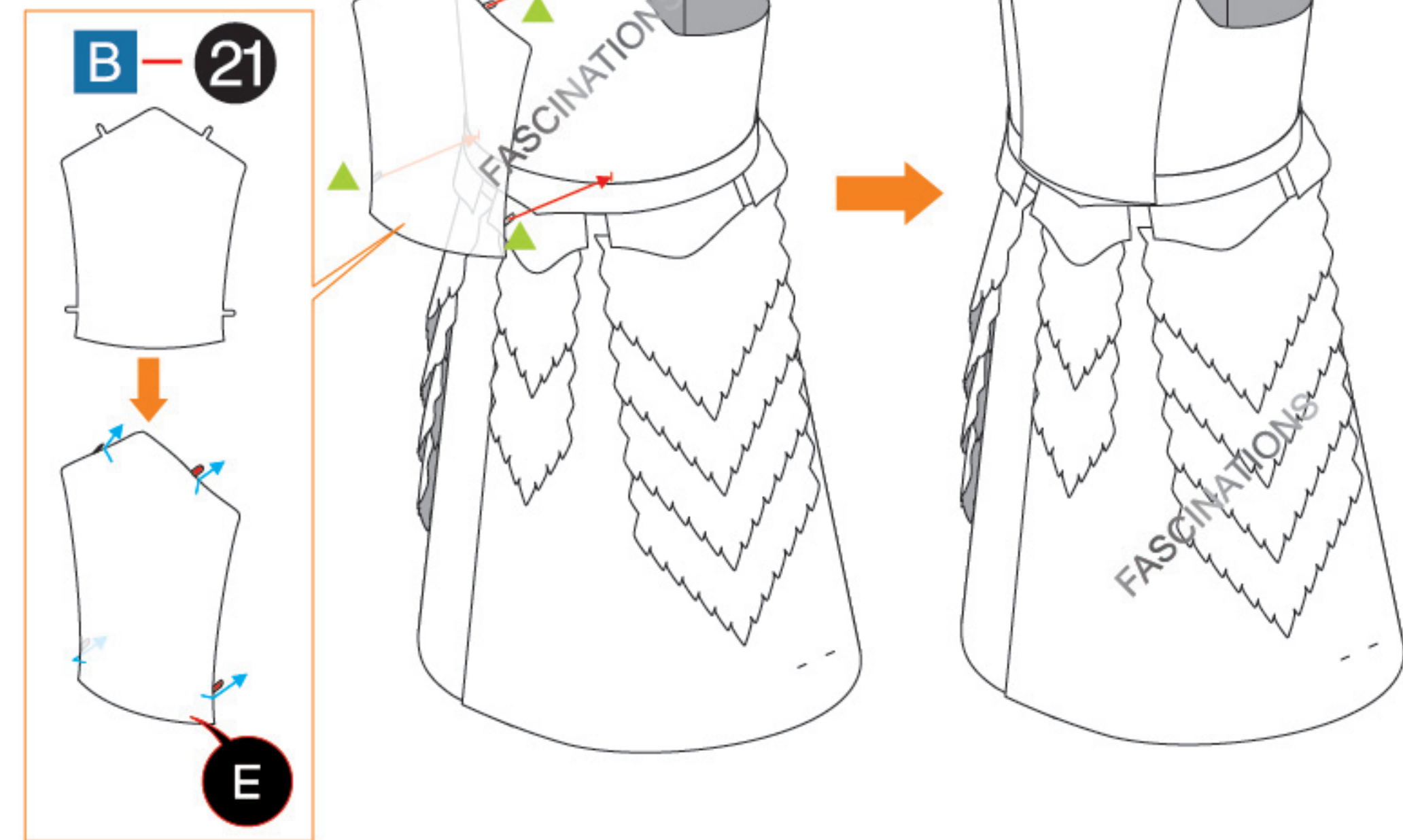


## Step 13

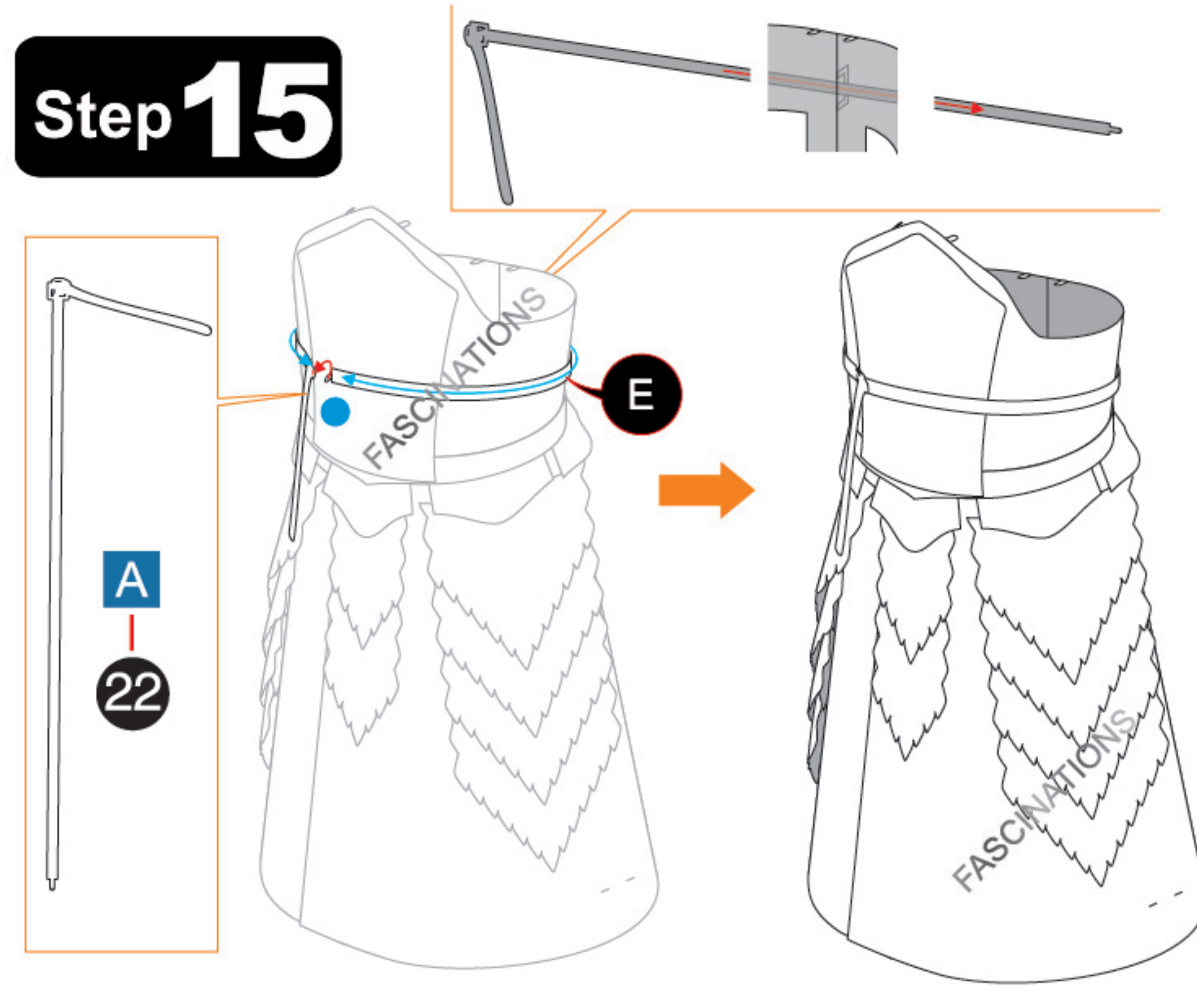




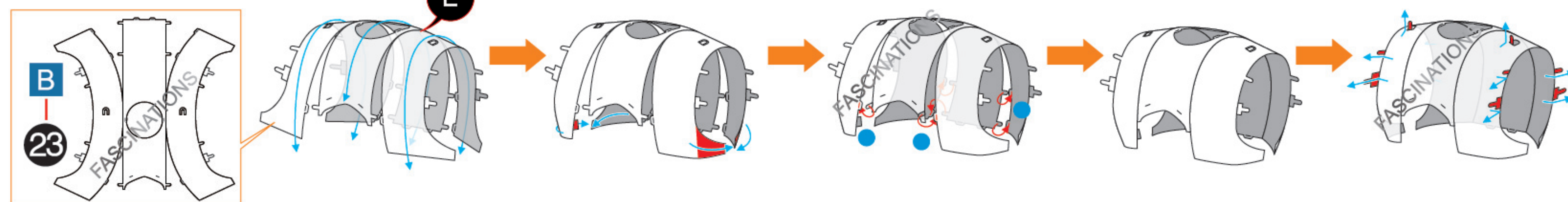
## Step 14



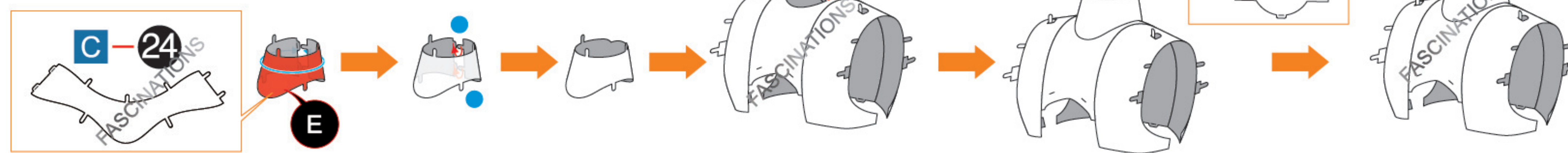
## Step 15



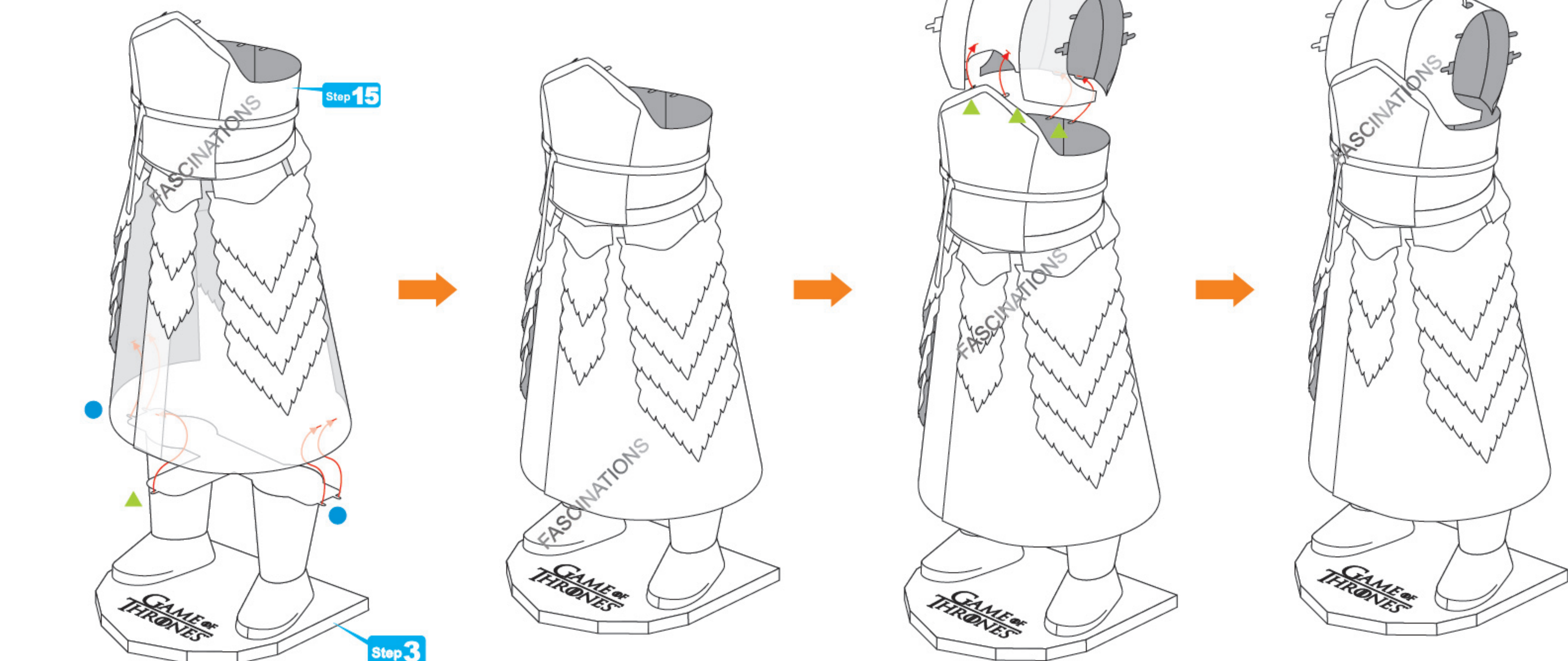
## Step 16



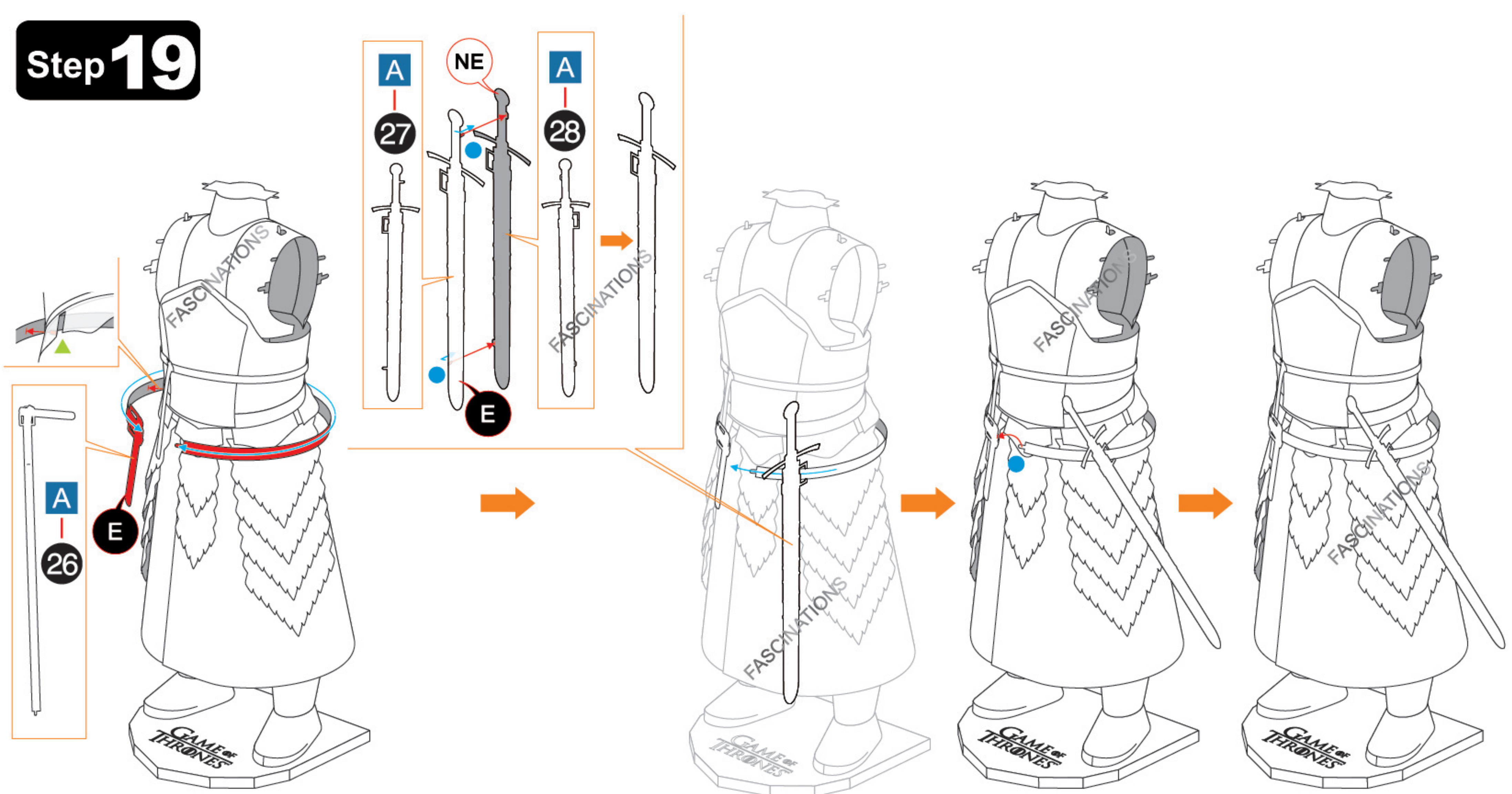
## Step 17



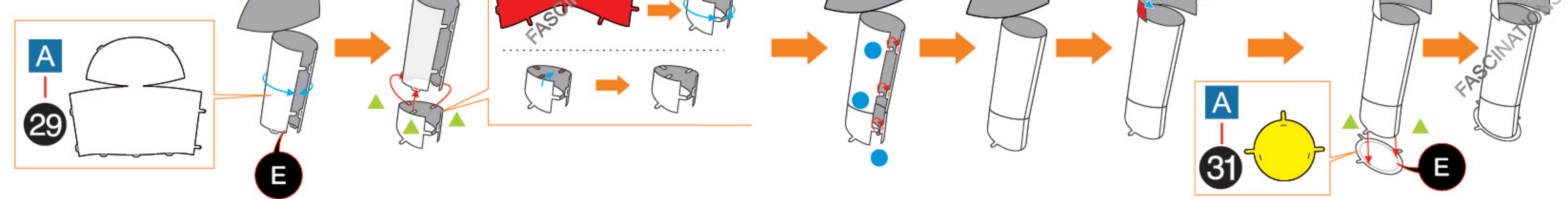
## Step 18



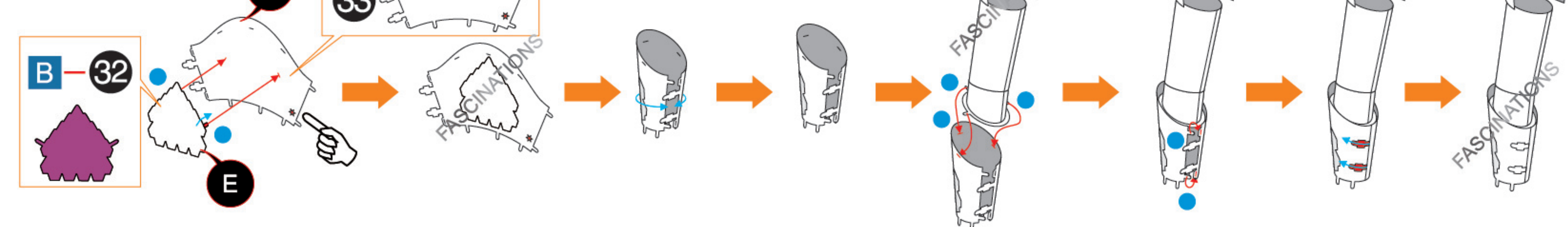
## Step 19



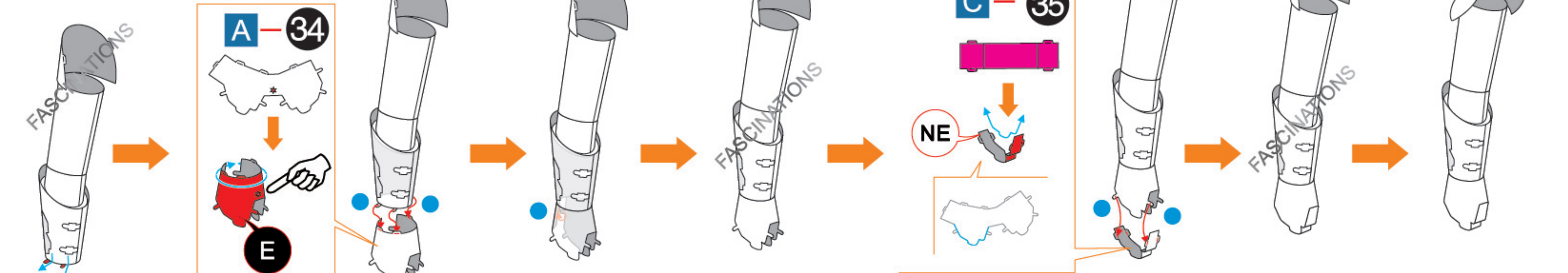
## Step 20



## Step 21

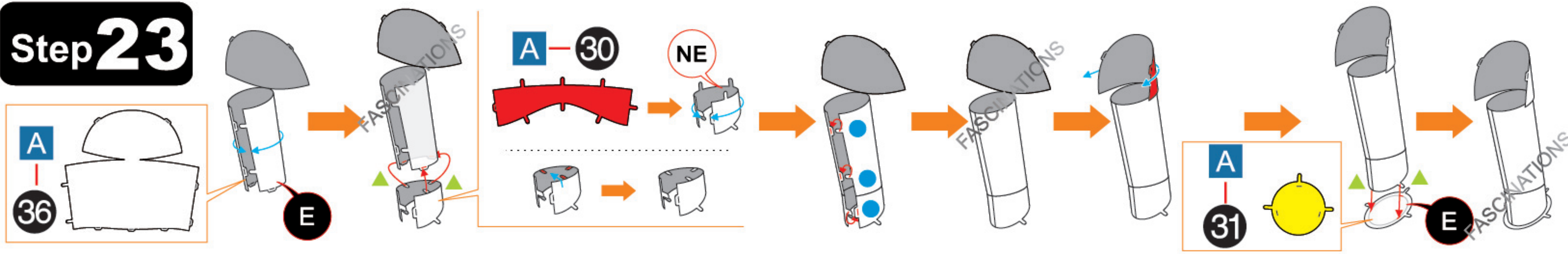


## Step 22

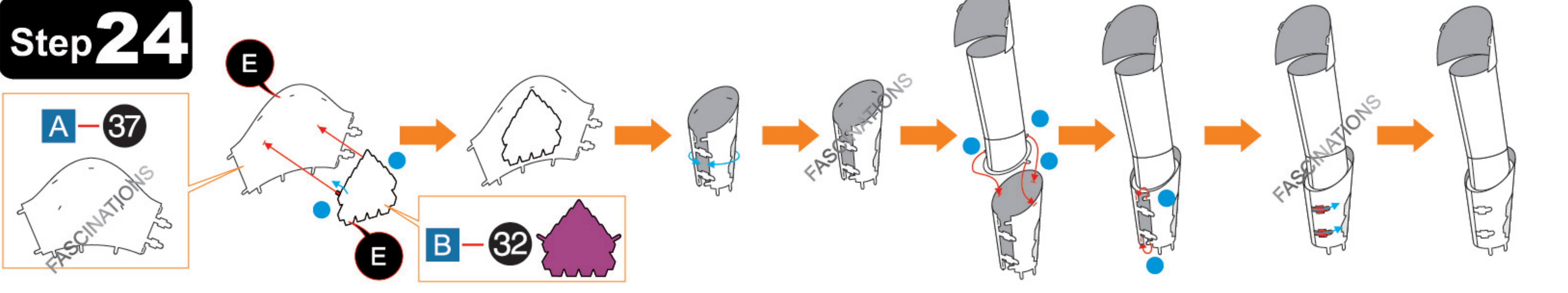




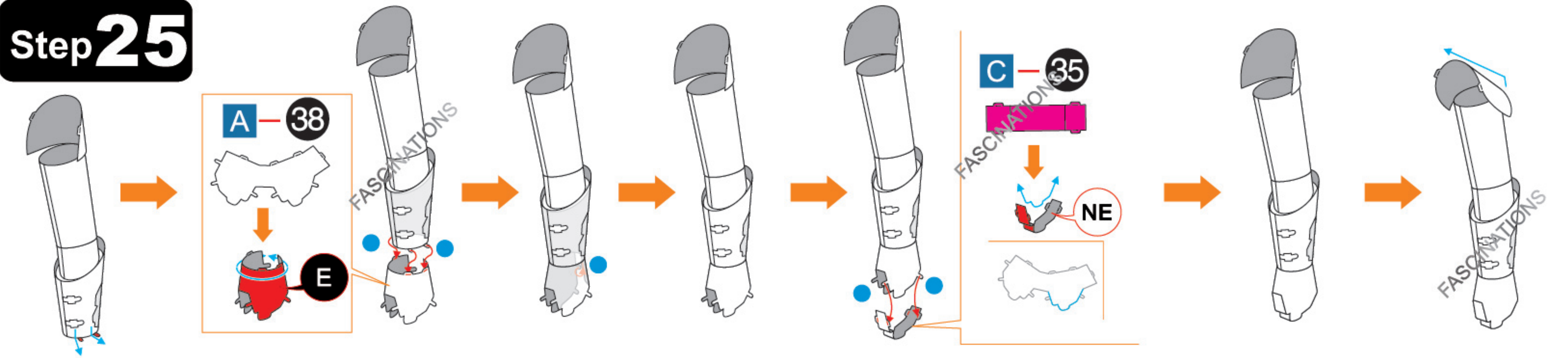
## Step 23



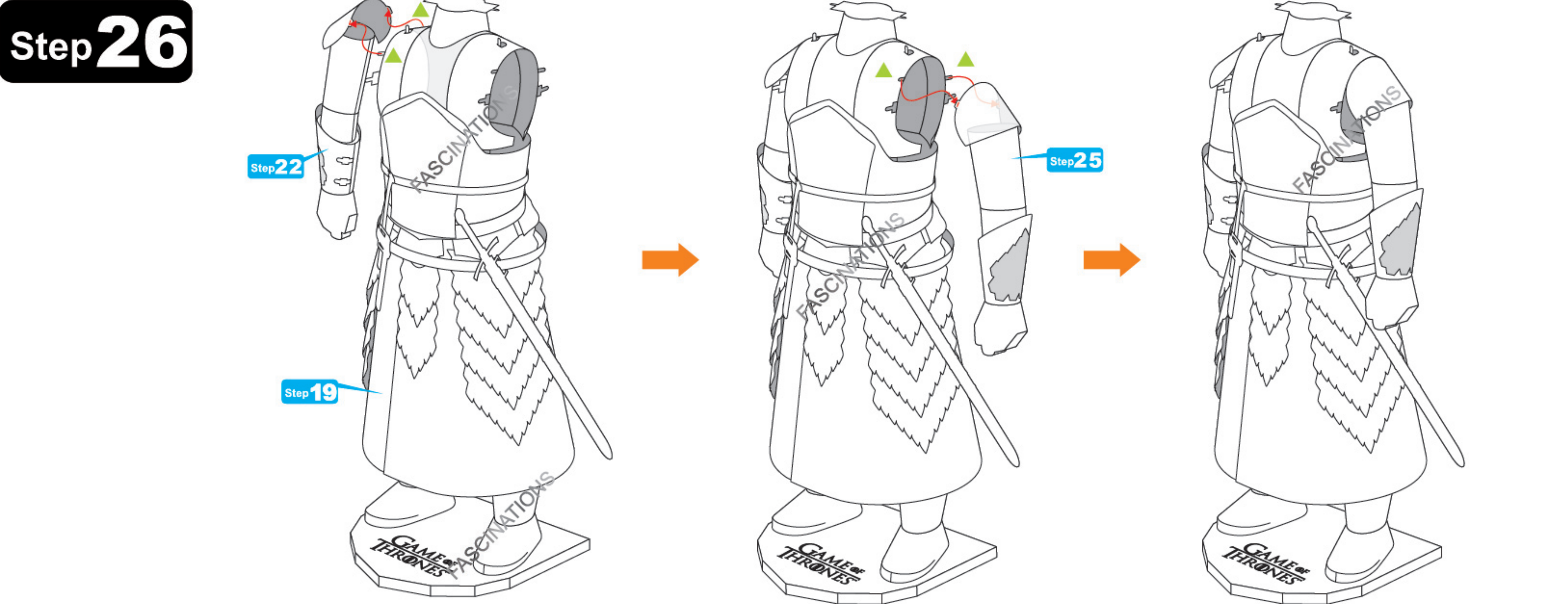
## Step 24



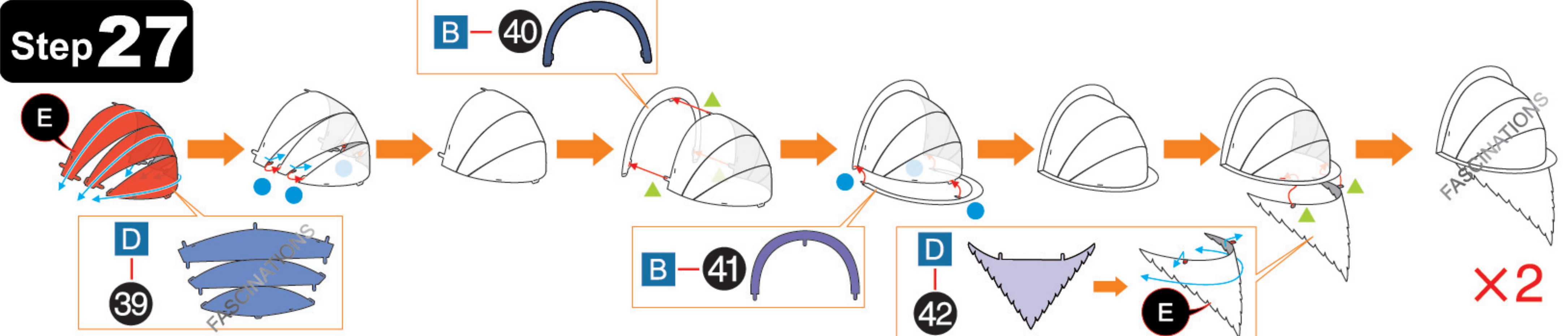
## Step 25



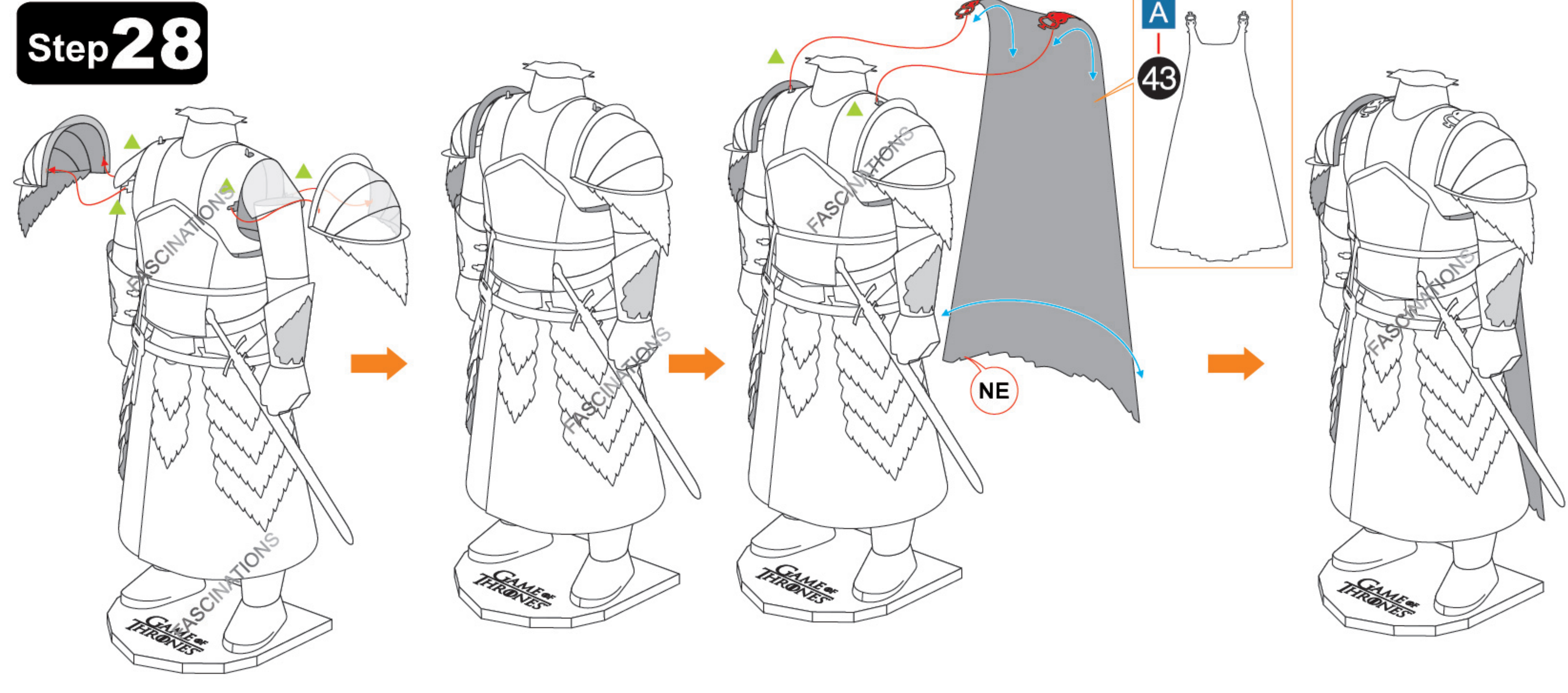
## Step 26



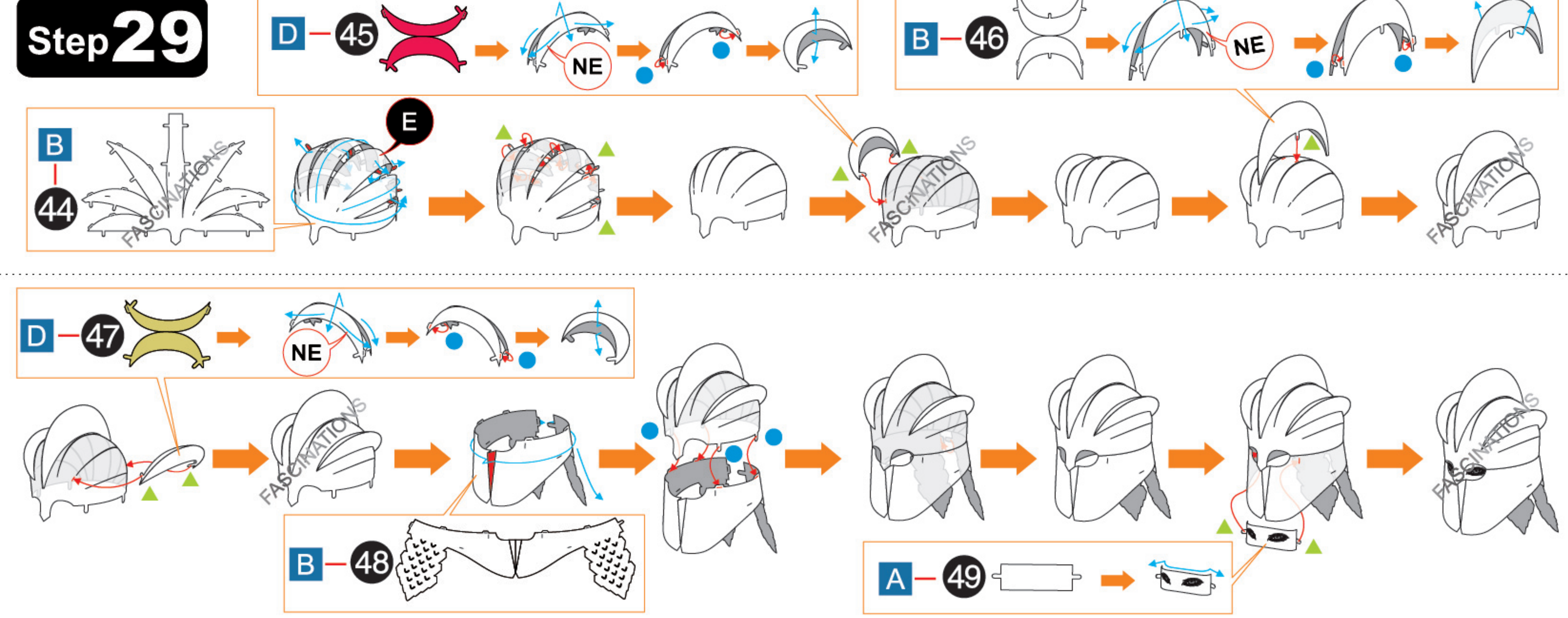
## Step 27



## Step 28



## Step 29



## Step 30

