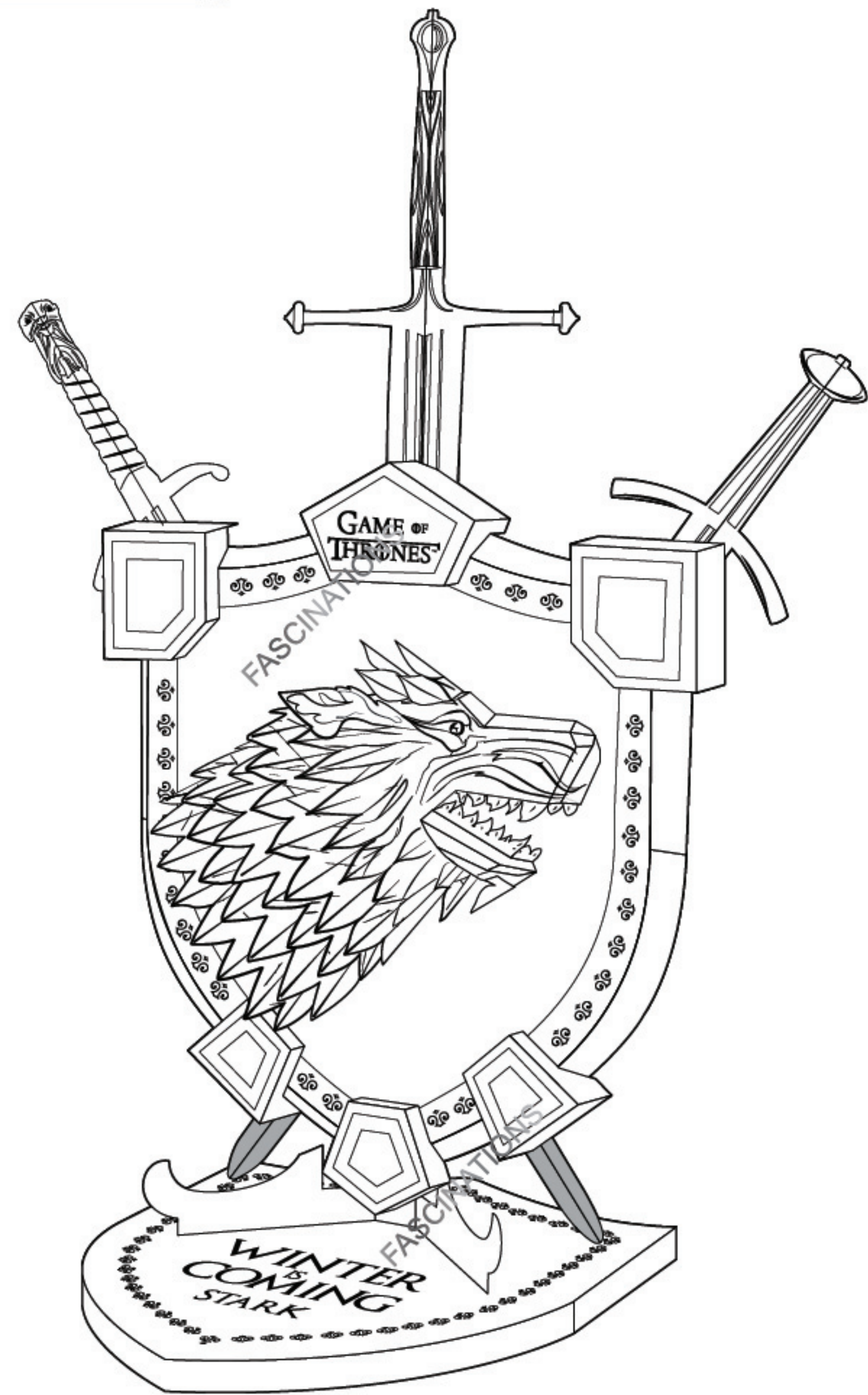




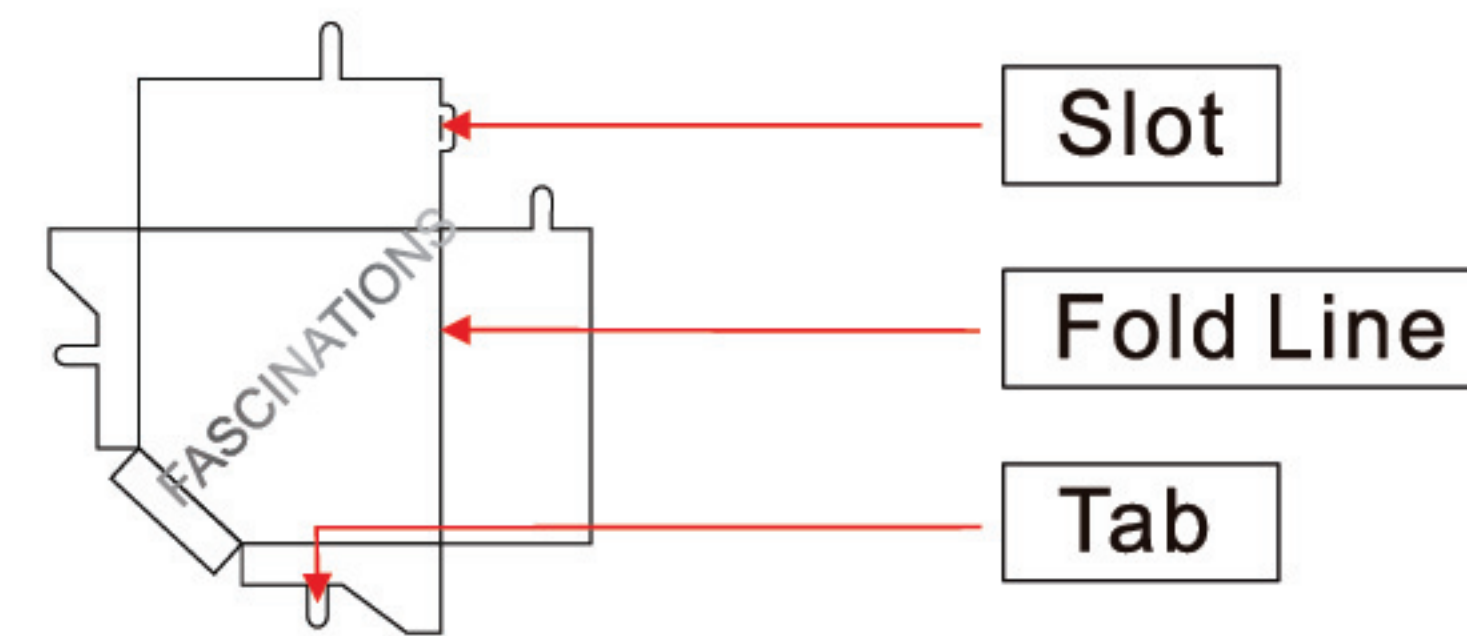
It is highly recommended that you visit  
[www.metal-earth.com/360/icx125](http://www.metal-earth.com/360/icx125)  
to see the completed model before assembling your own

ICX125



HOUSE STARK SIGIL

## TO CREATE THE BEST CONNECTIONS



### Legends:

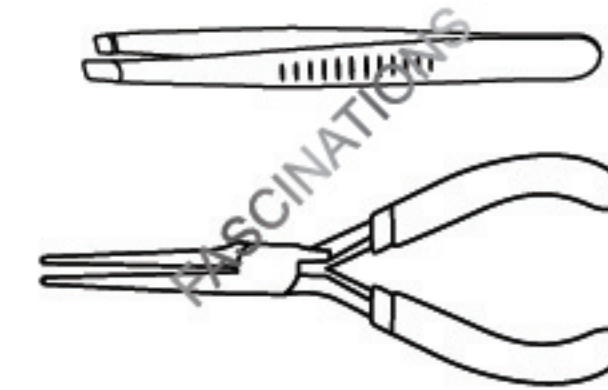
- E** Engraved side
- NE** Non-engraved side
- Attention point
- Insert tab and bend 90 degrees
- Insert tab and twist 90 degrees

### Recommended tools:

-Wire cutters: helpful for taking parts from the metal sheets.



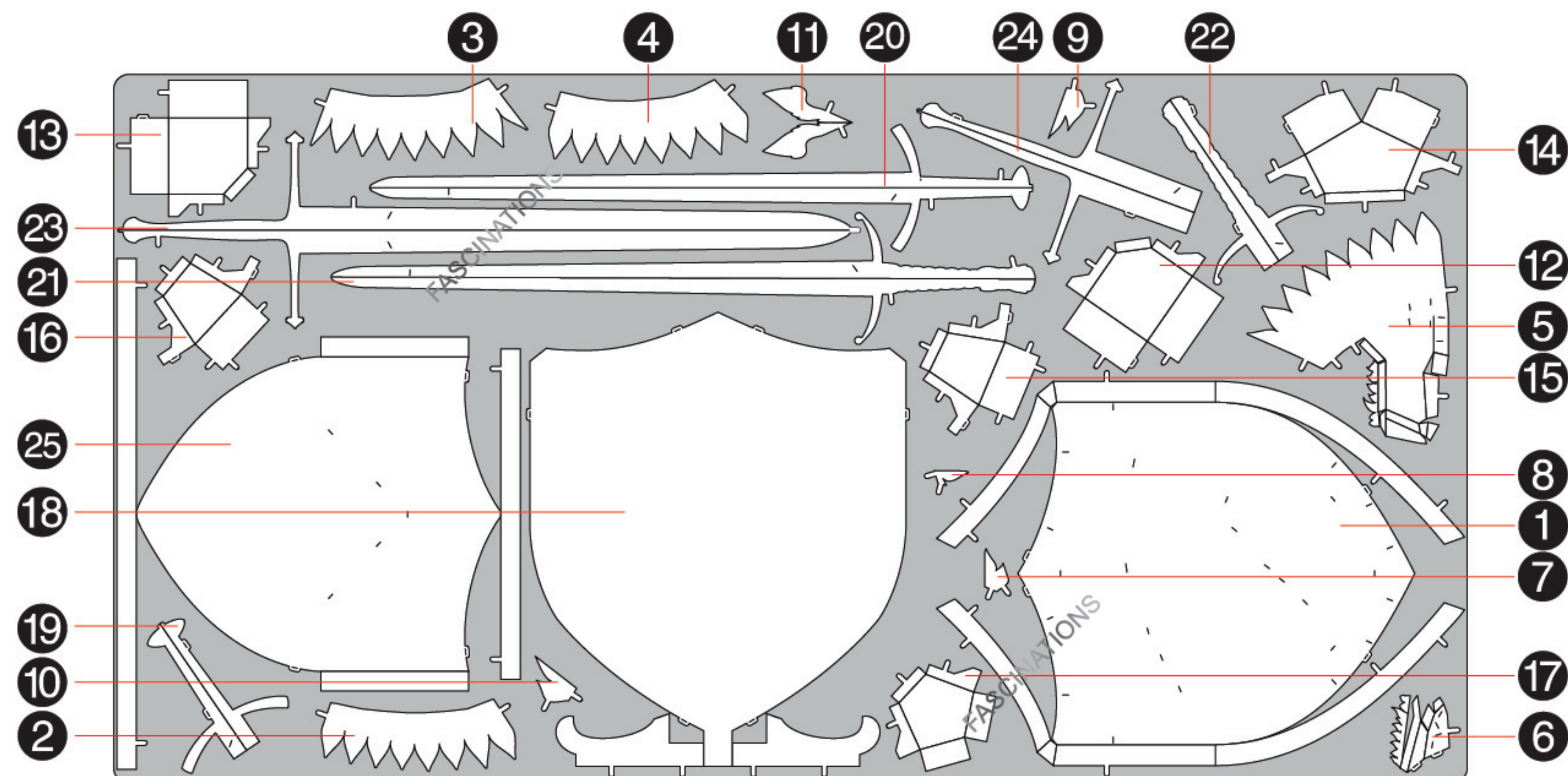
-Tweezers or needle nose pliers: helpful for folding parts, bending and twisting tabs.



### Assembly tip:

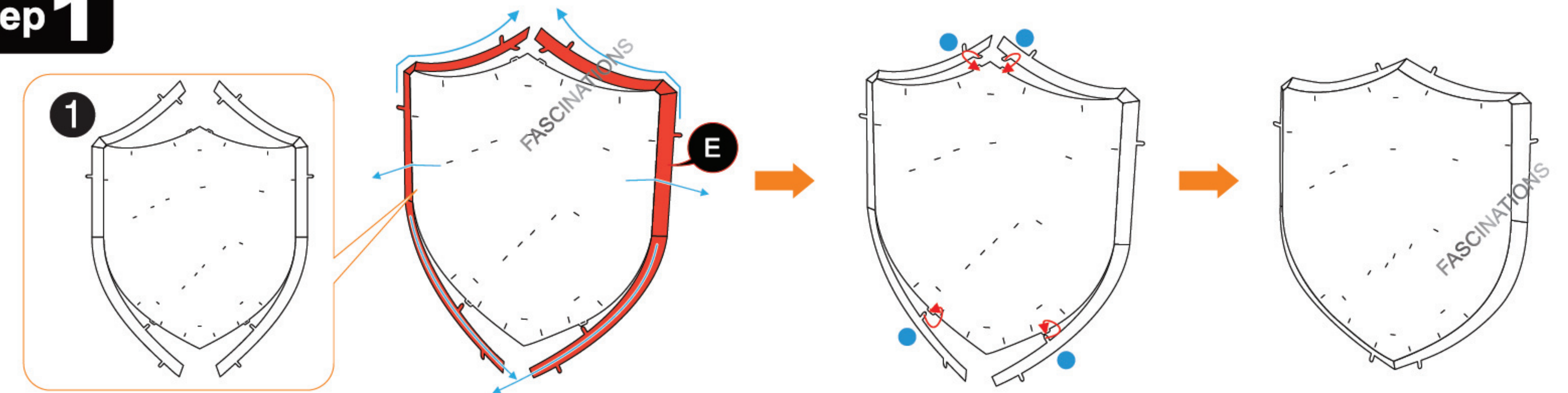
If needed, slightly twist tabs to hold parts together then untwist and bend them down for a nice finish

## METAL SHEETS

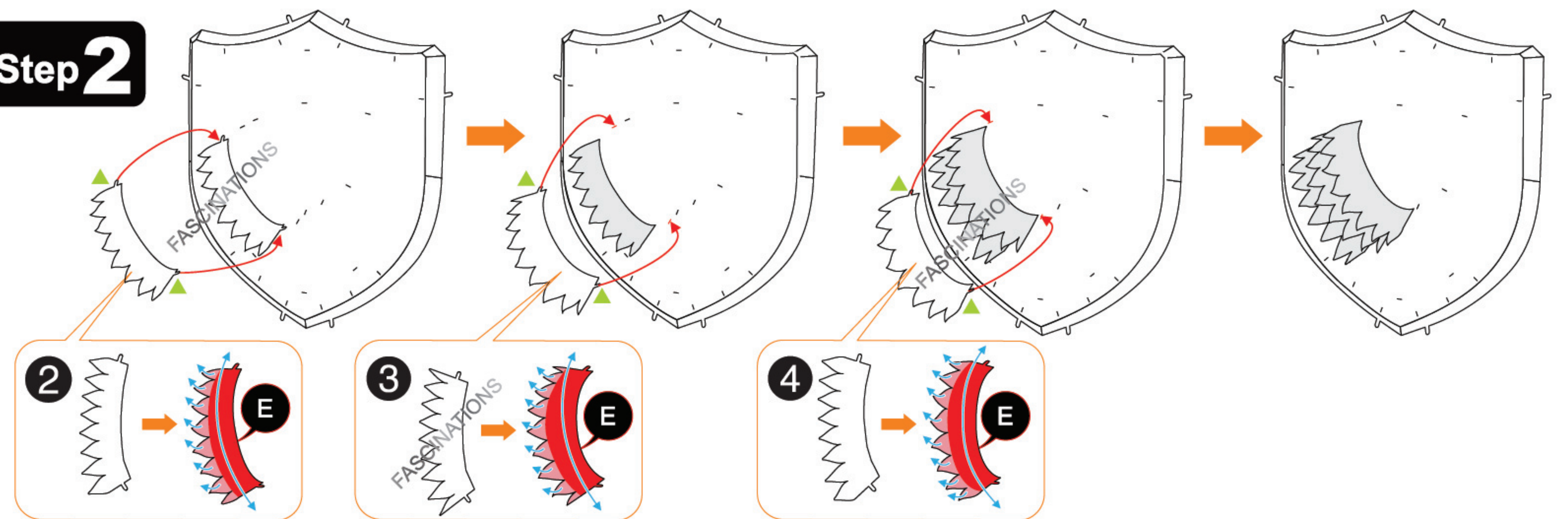


## ASSEMBLY STEPS

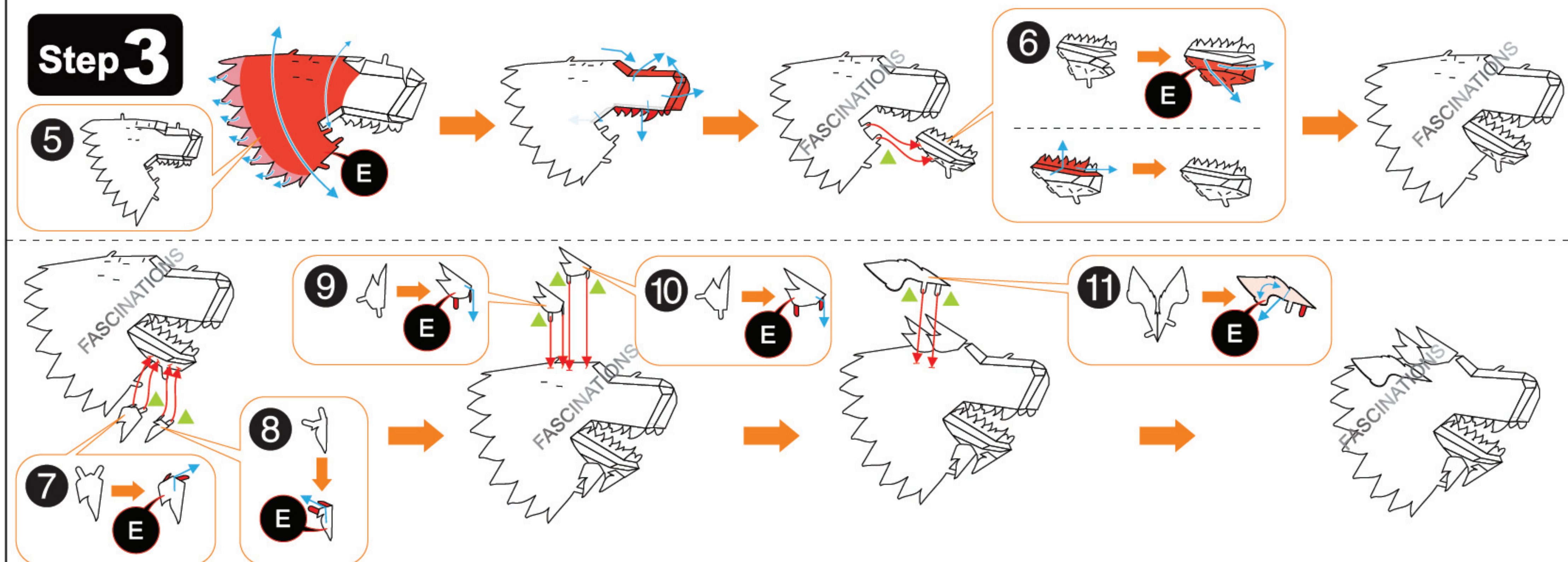
### Step 1



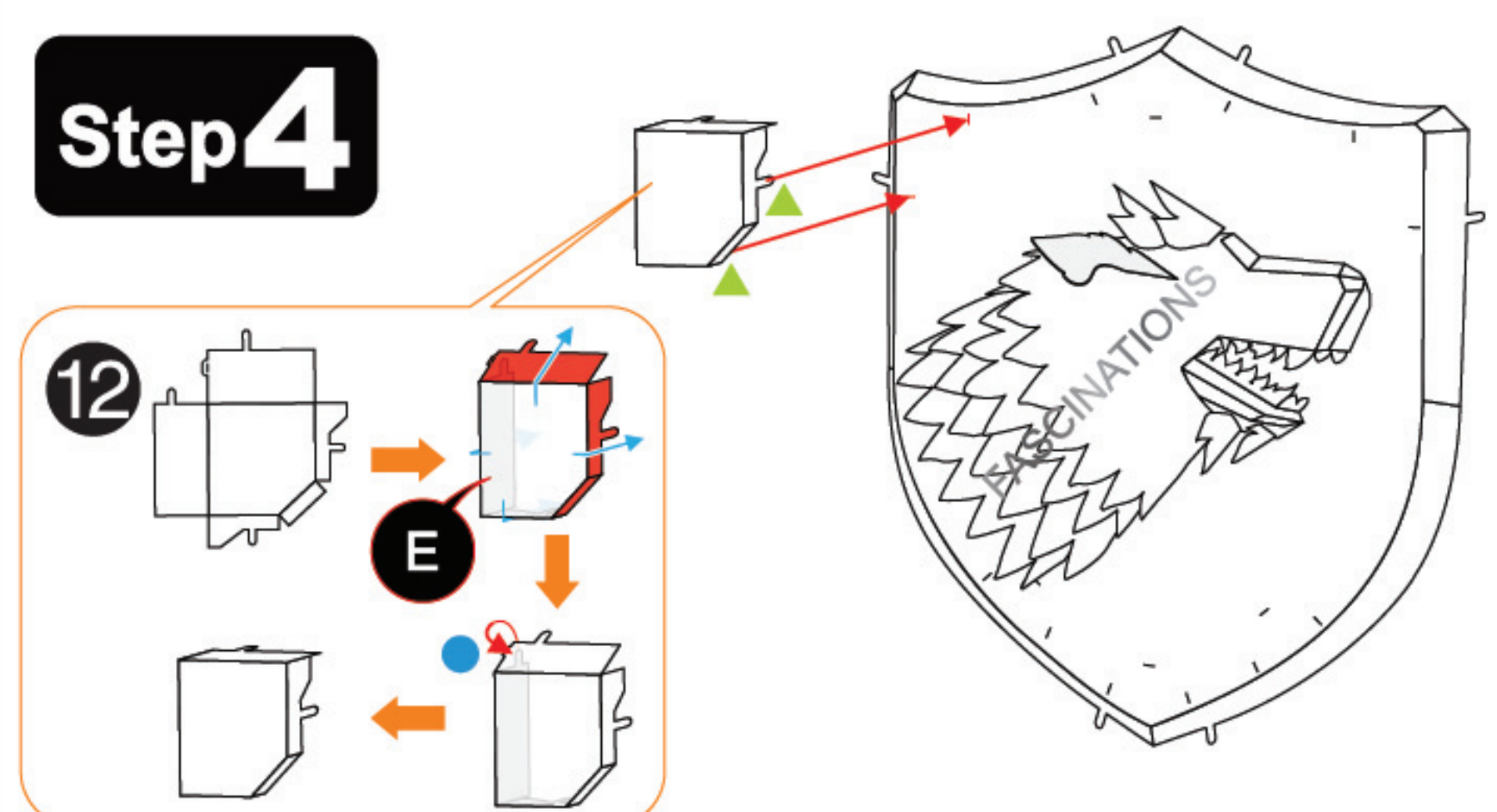
### Step 2



### Step 3

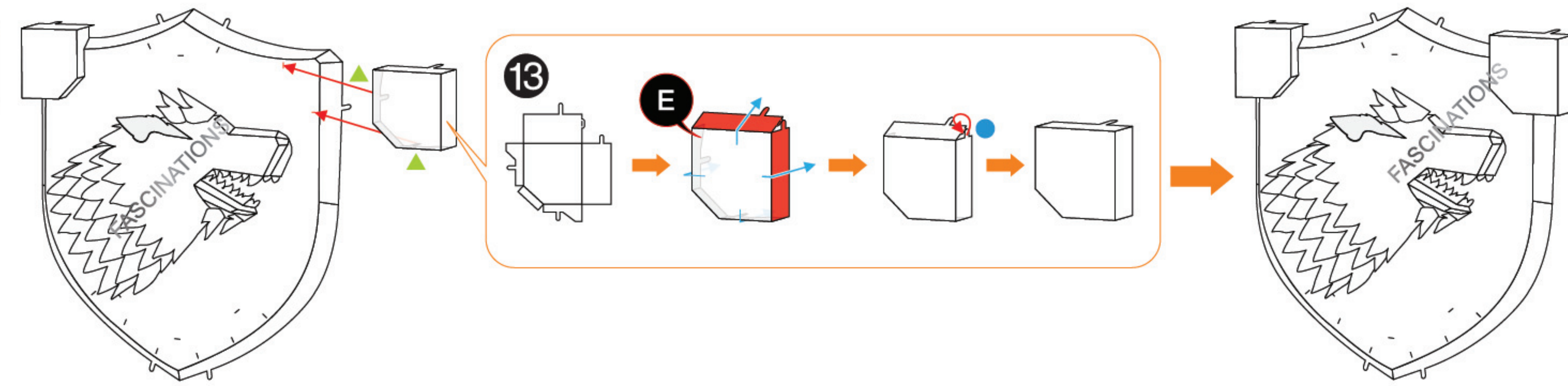


### Step 4

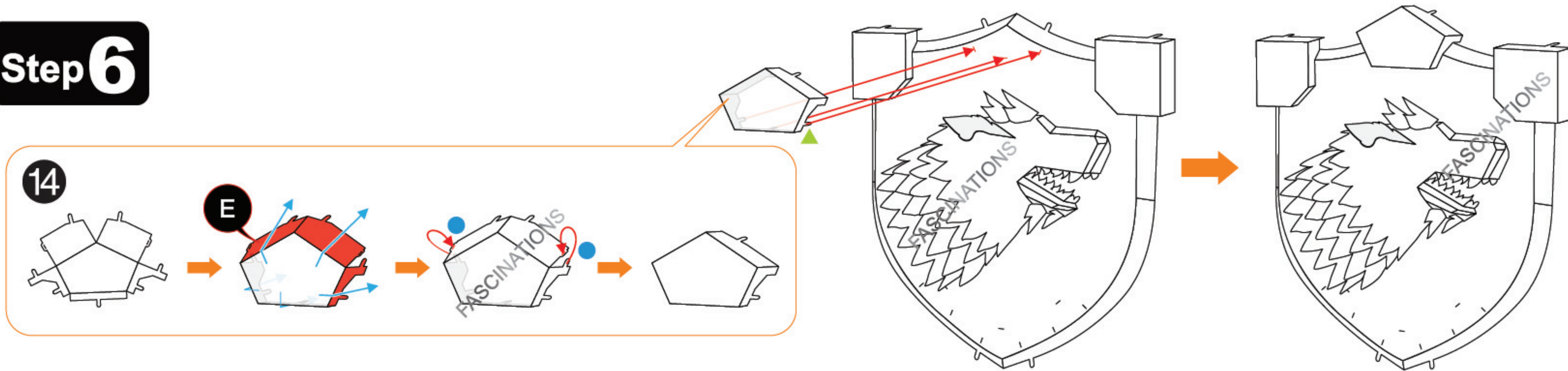




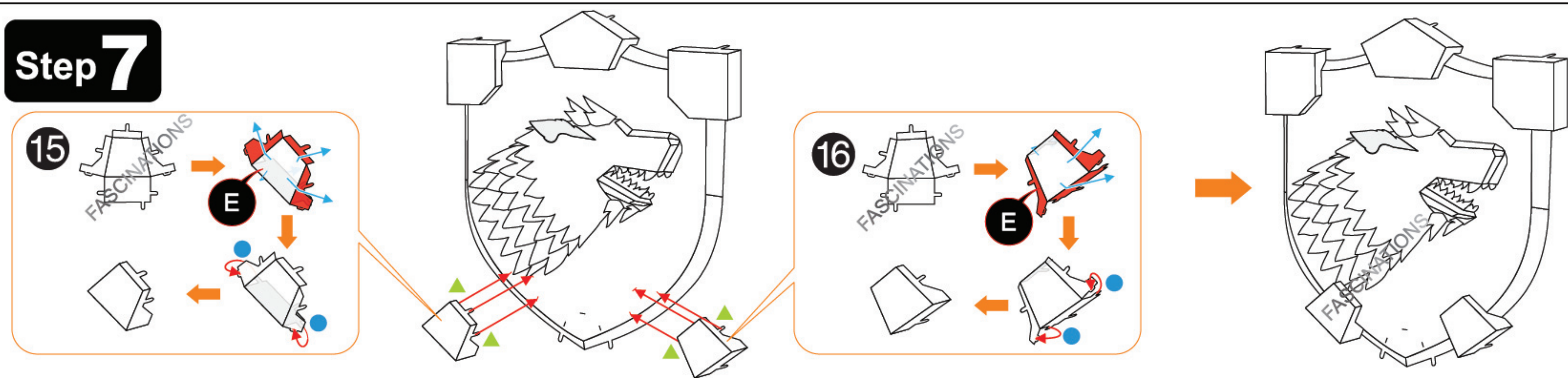
Step 5



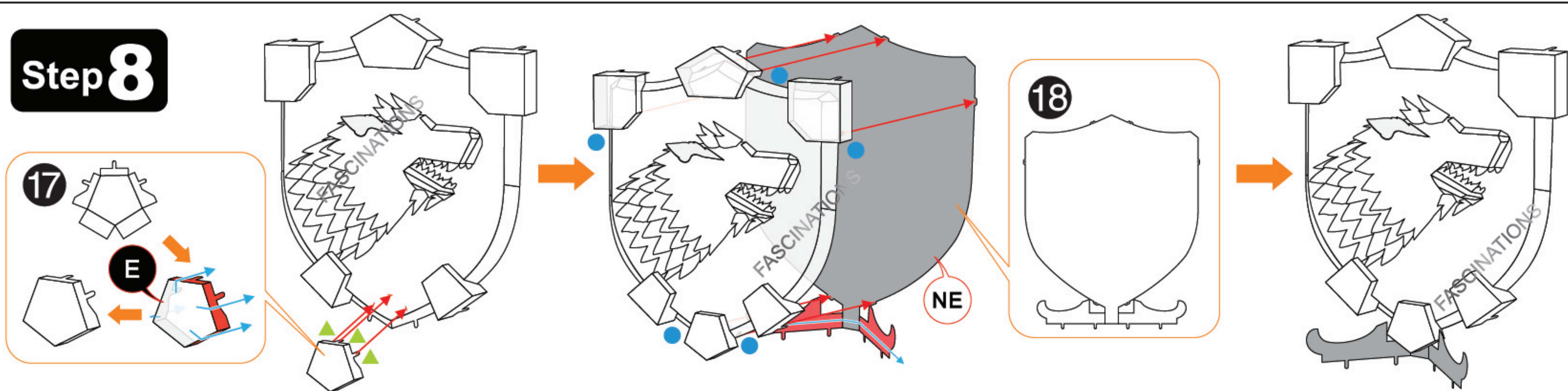
Step 6



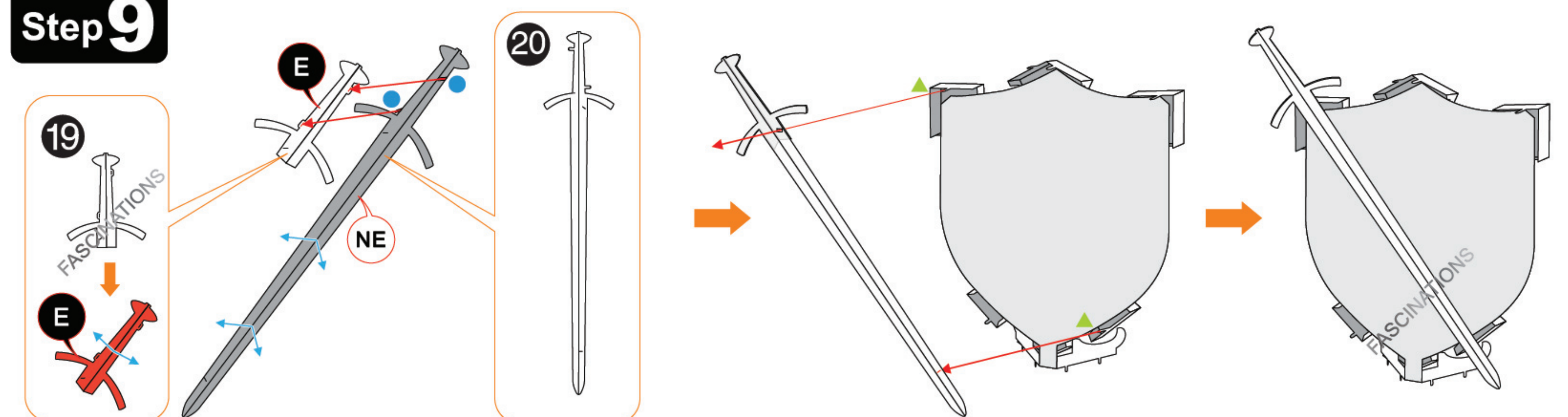
Step 7



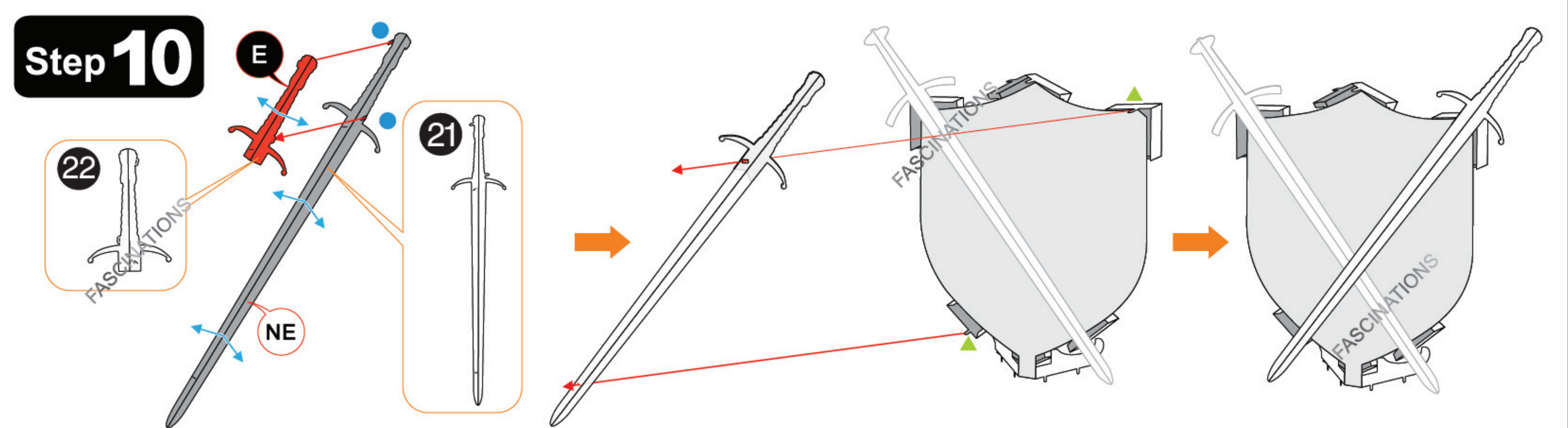
Step 8



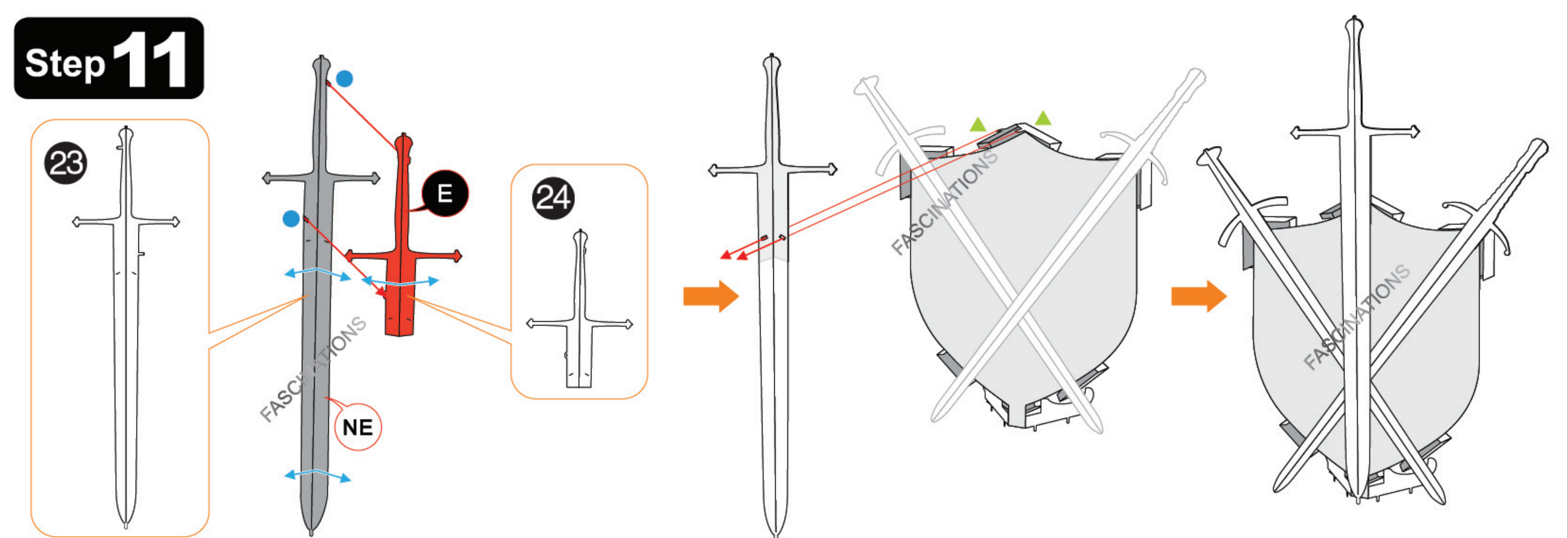
Step 9



Step 10



Step 11



Step 12

