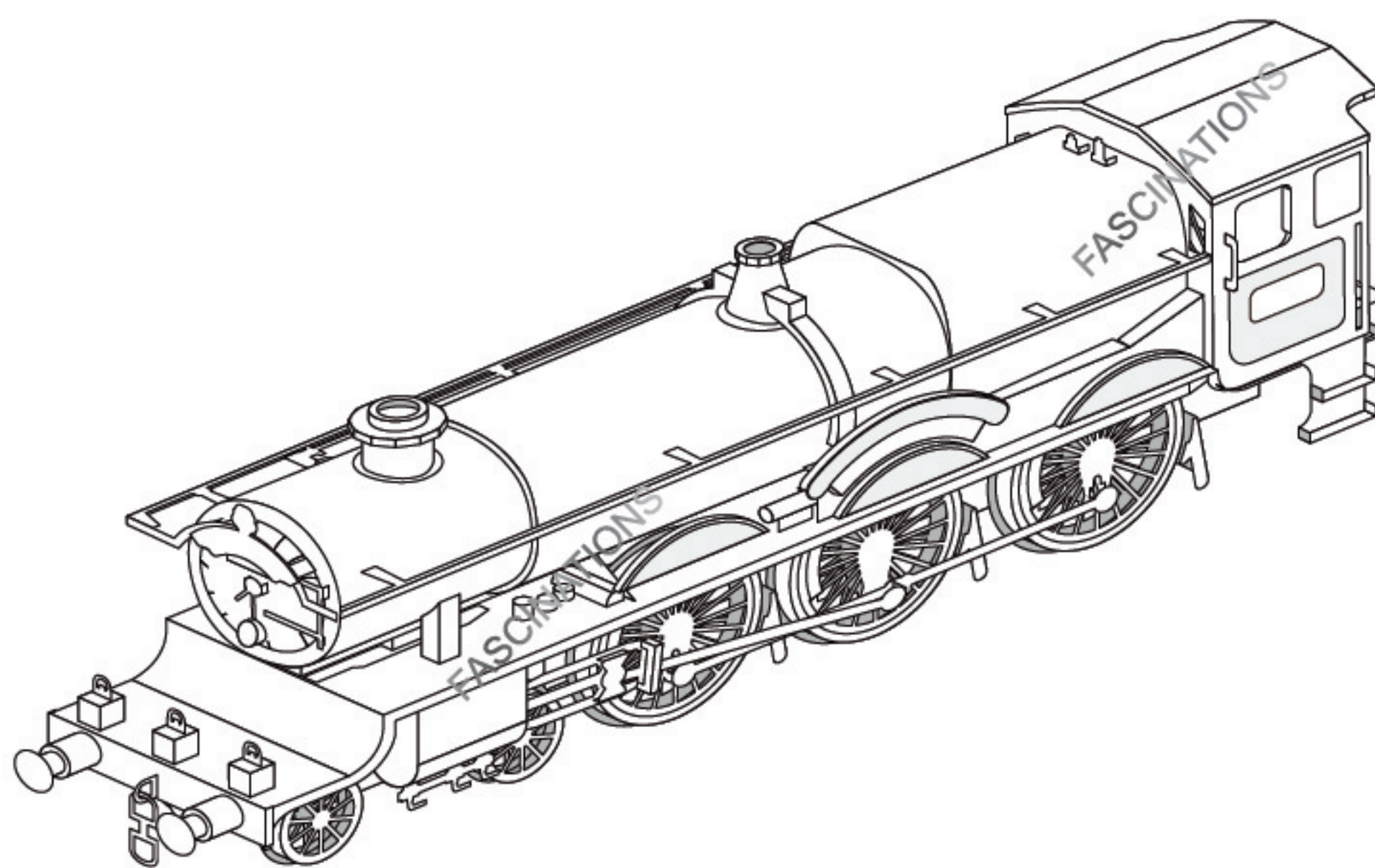




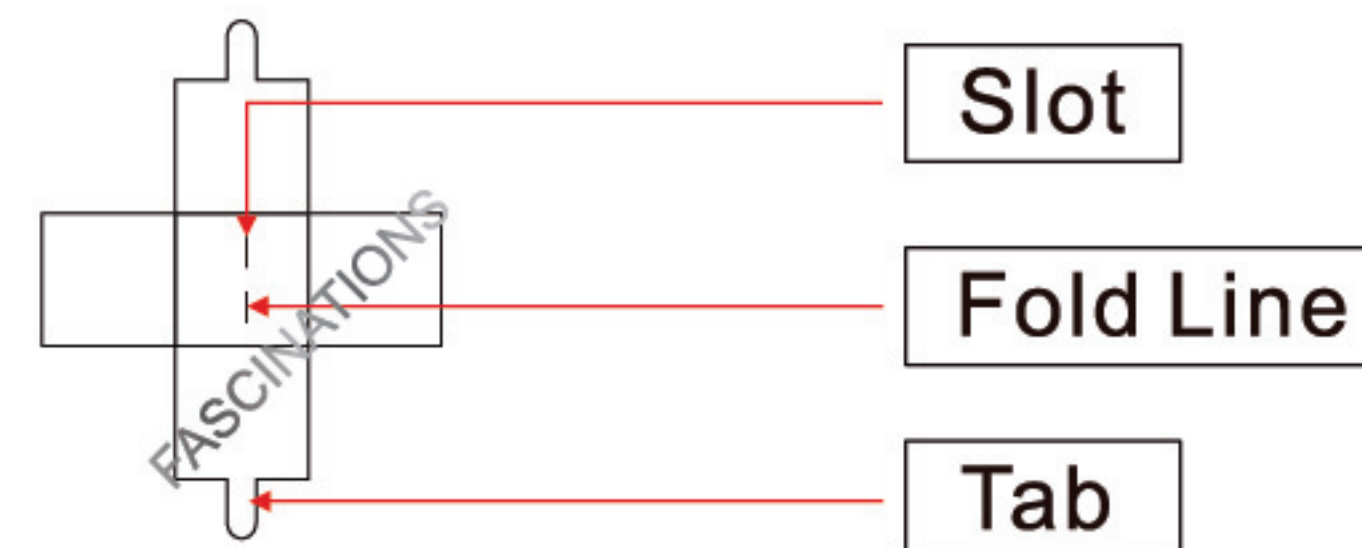
It is highly recommended that you visit  
[www.metal-earth.com/360/icx137](http://www.metal-earth.com/360/icx137)  
to see the completed model before assembling your own



ICX137



### TO CREATE THE BEST CONNECTIONS



#### Legends:

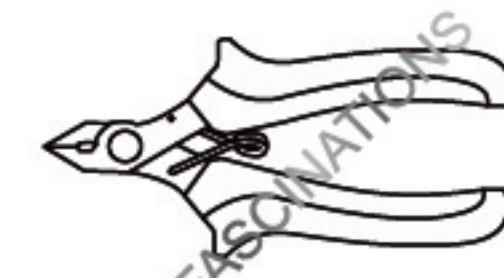
- E** Engraved/Color side
- NE** Non-engraved/Silver side
- Attention point
- Insert tab and bend 90 degrees
- Insert tab and twist 90 degrees

#### Assembly tip:

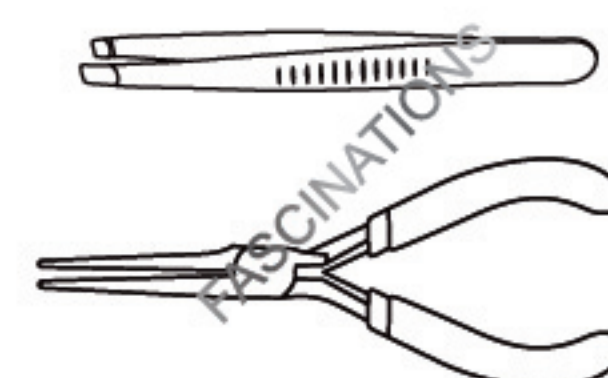
If needed, slightly twist tabs to hold parts together then untwist and bend them down for a nice finish

#### Recommended tools:

-Wire cutters: helpful for taking parts from the metal sheets.

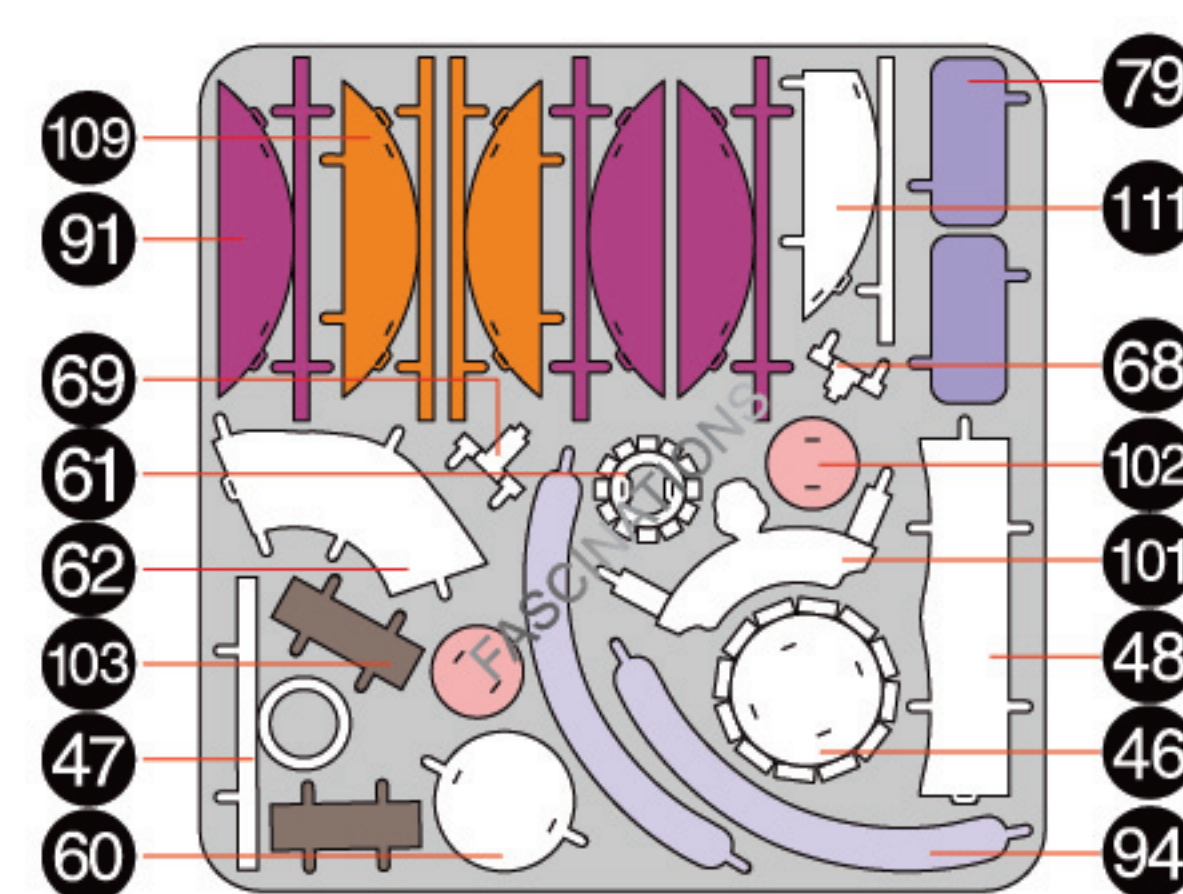


-Tweezers or needle nose pliers: helpful for folding parts, bending and twisting tabs.



### METAL SHEETS

A

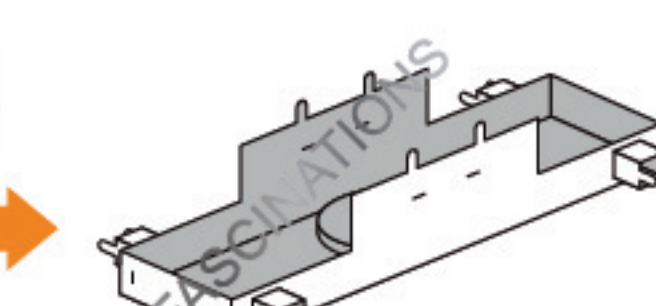
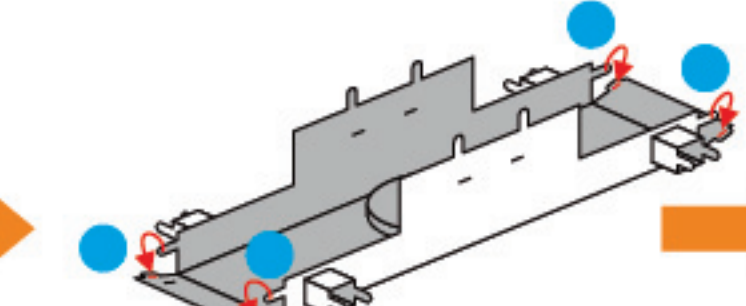
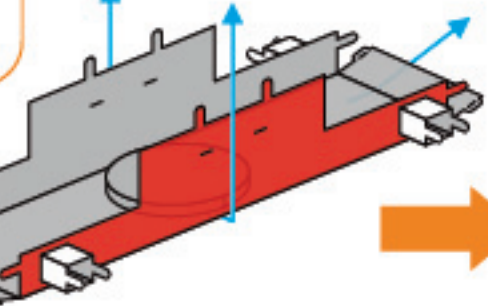
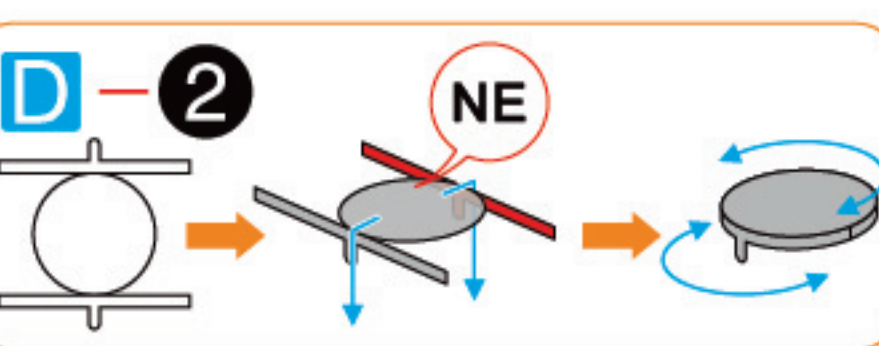
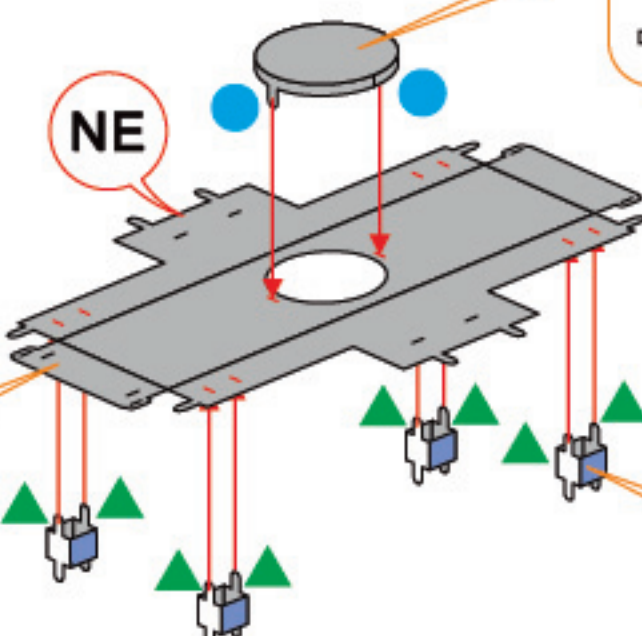
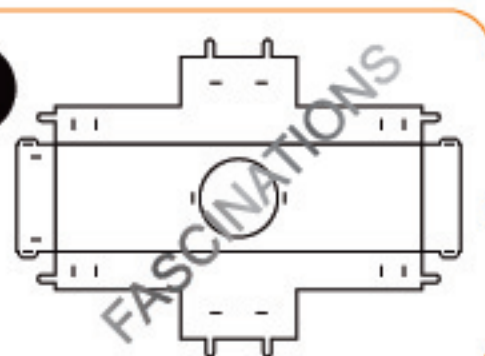


Parts that are in the same color are duplicates

### ASSEMBLY STEPS

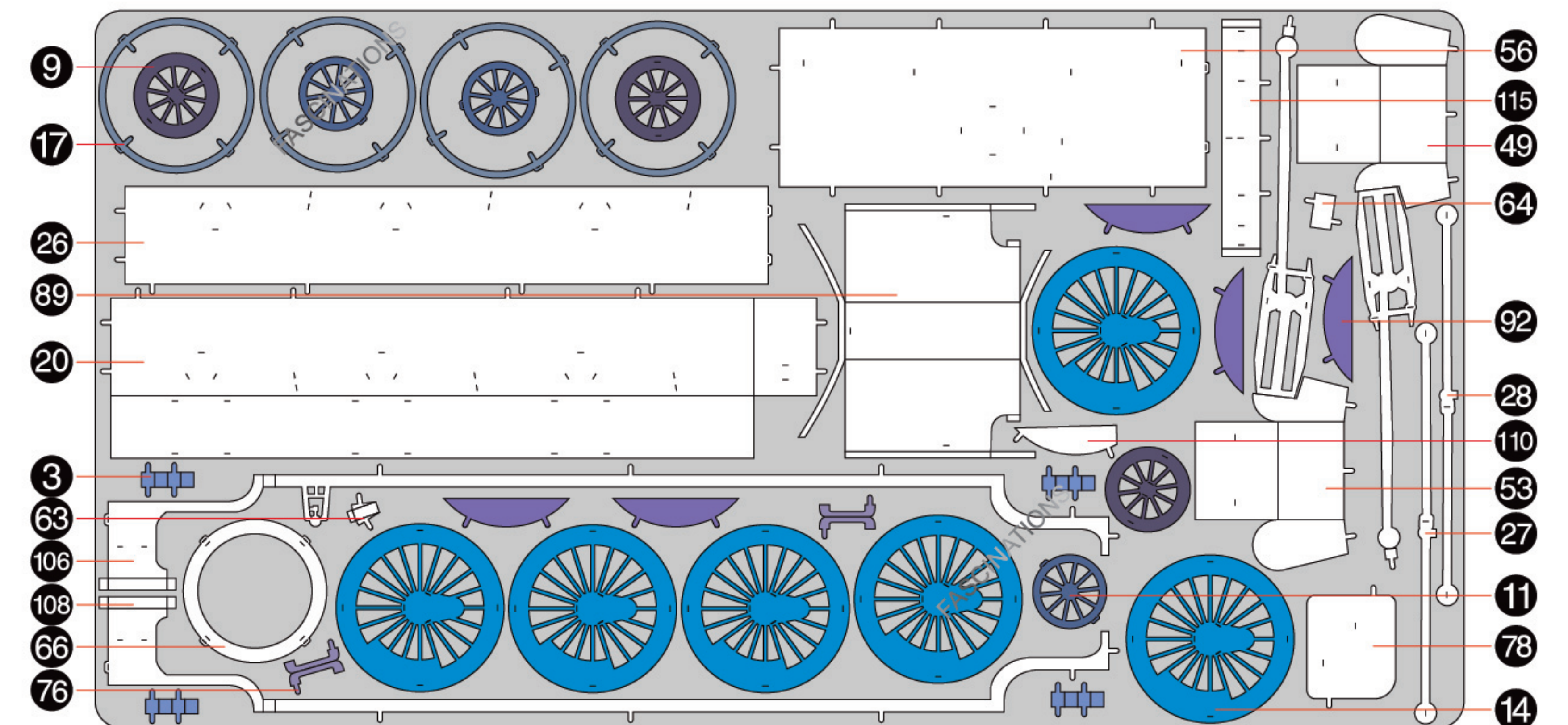
Step 1

D-1

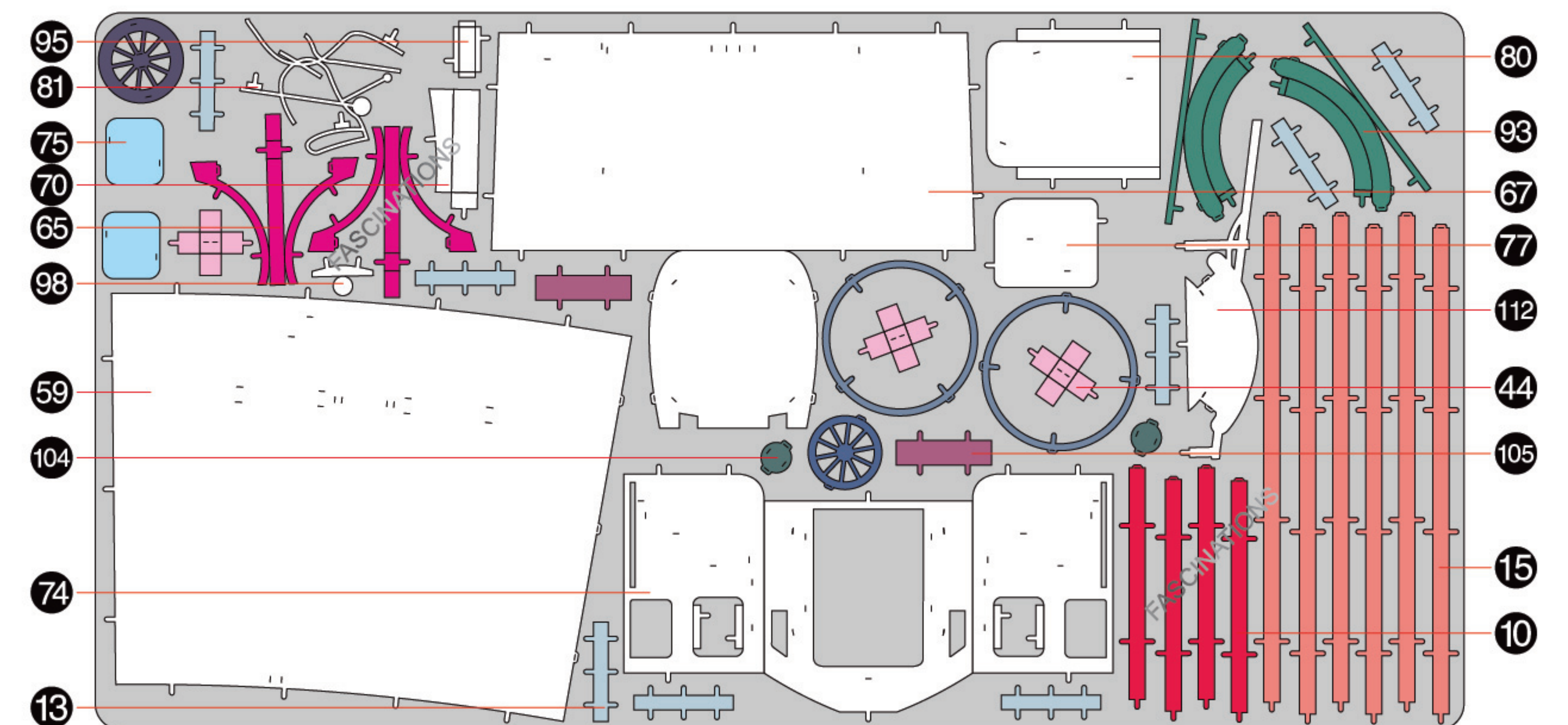


In order to avoid possible injury from sharp edges, please carefully discard the metal sheets after parts have been removed

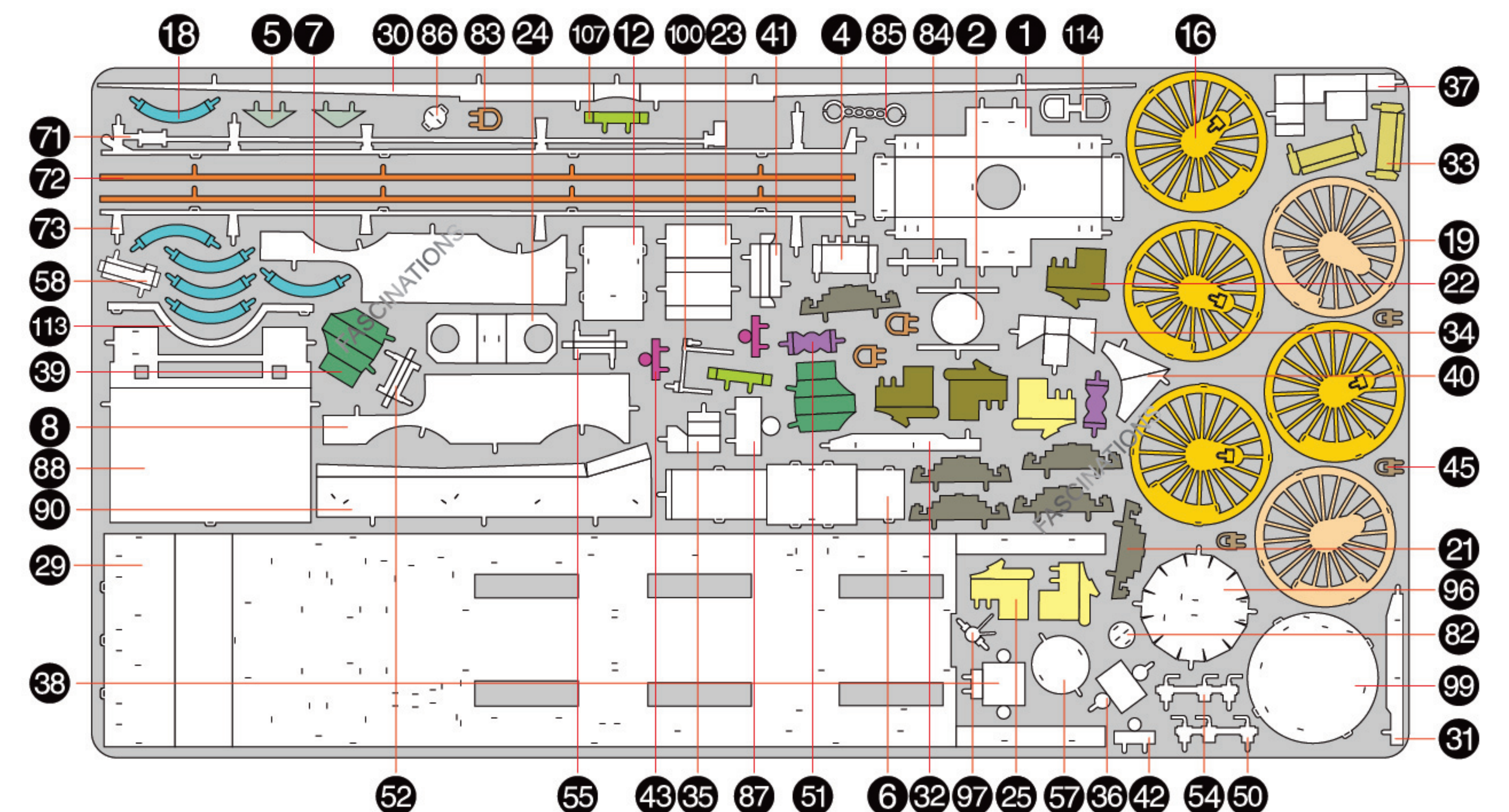
B



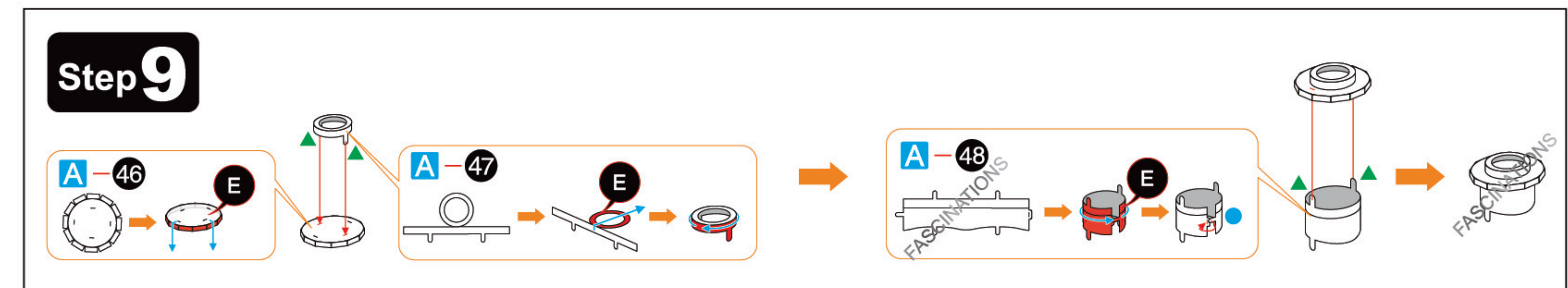
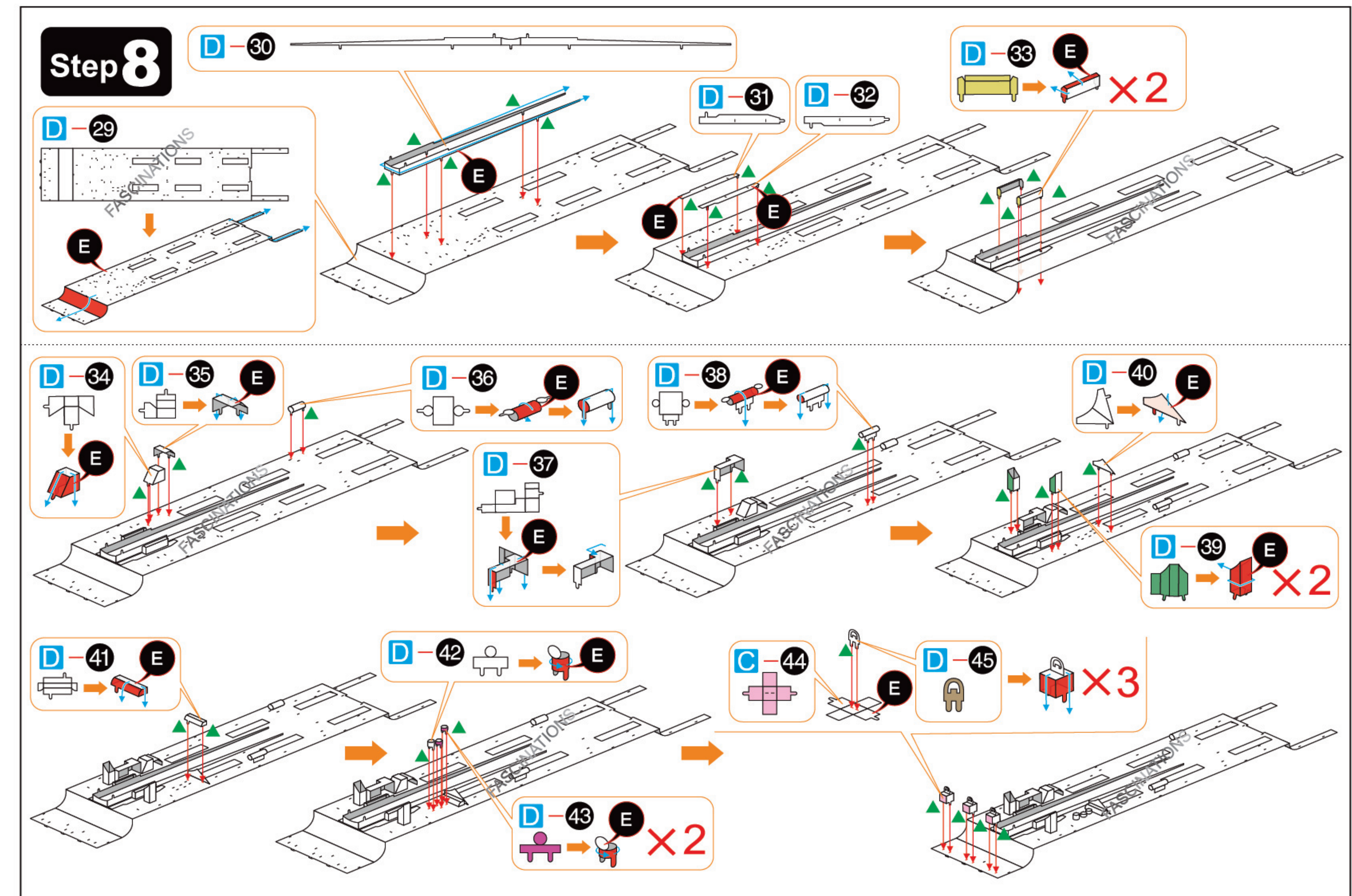
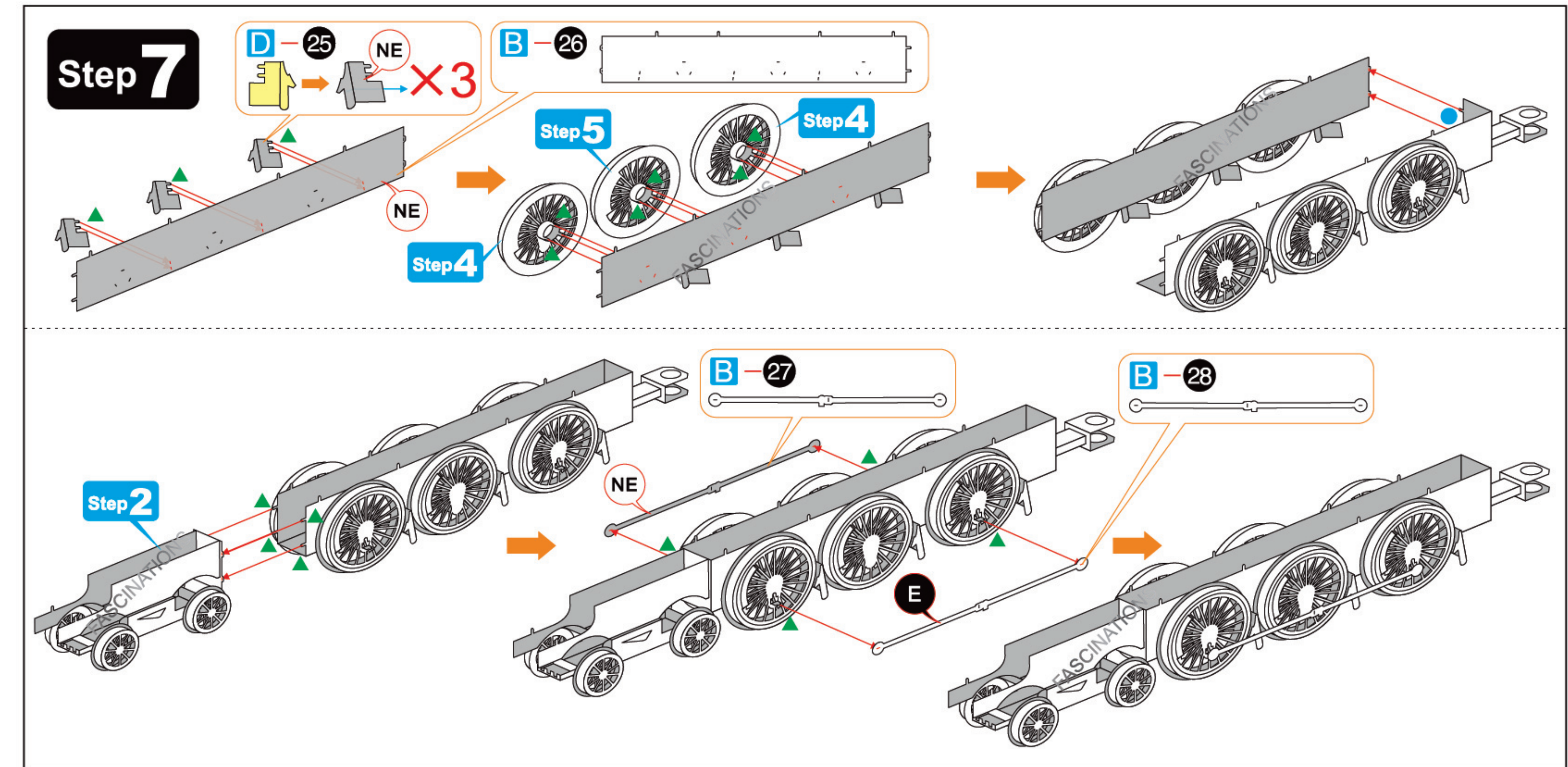
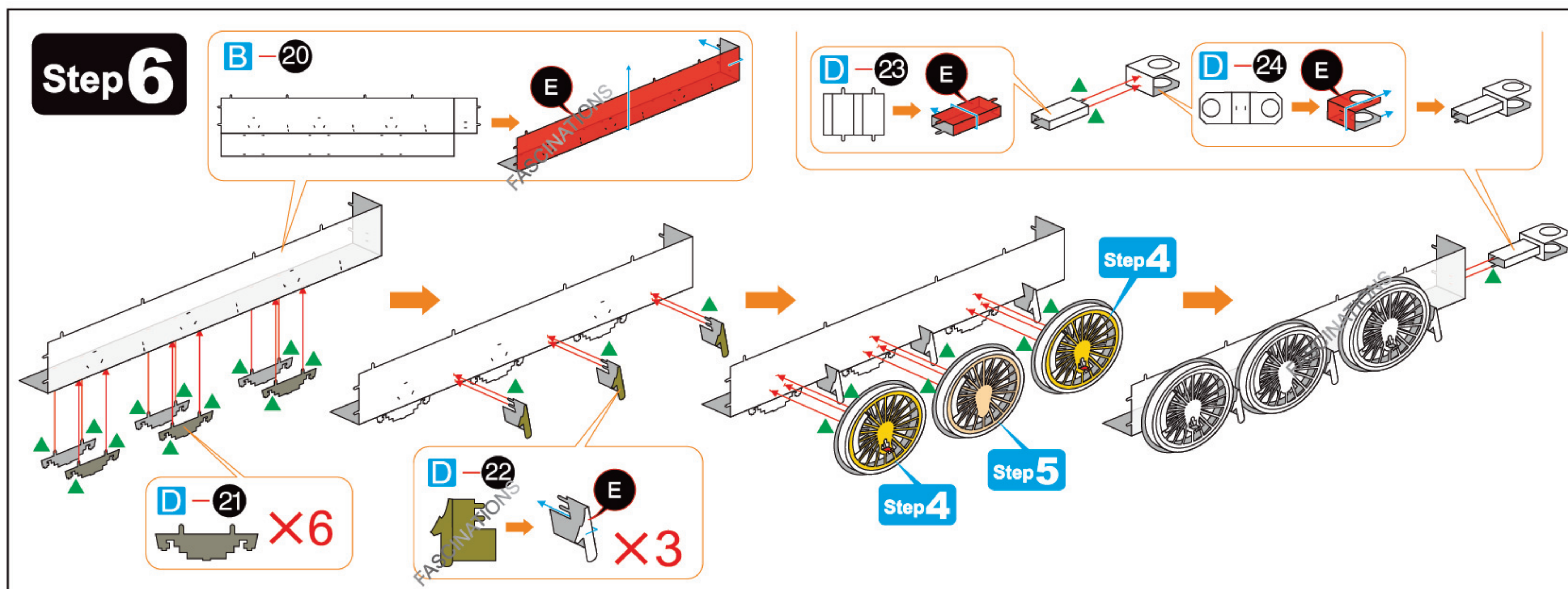
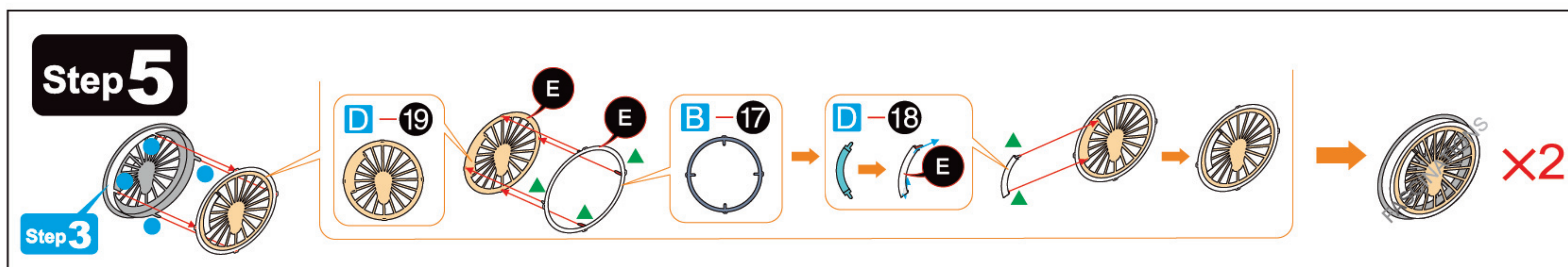
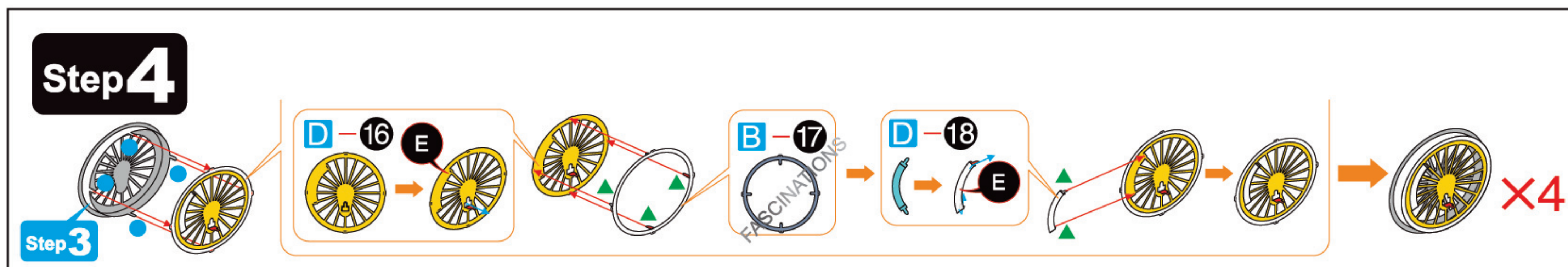
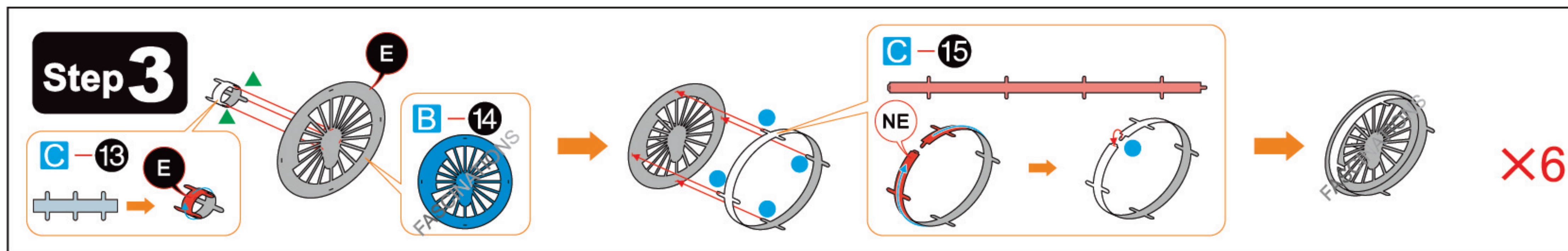
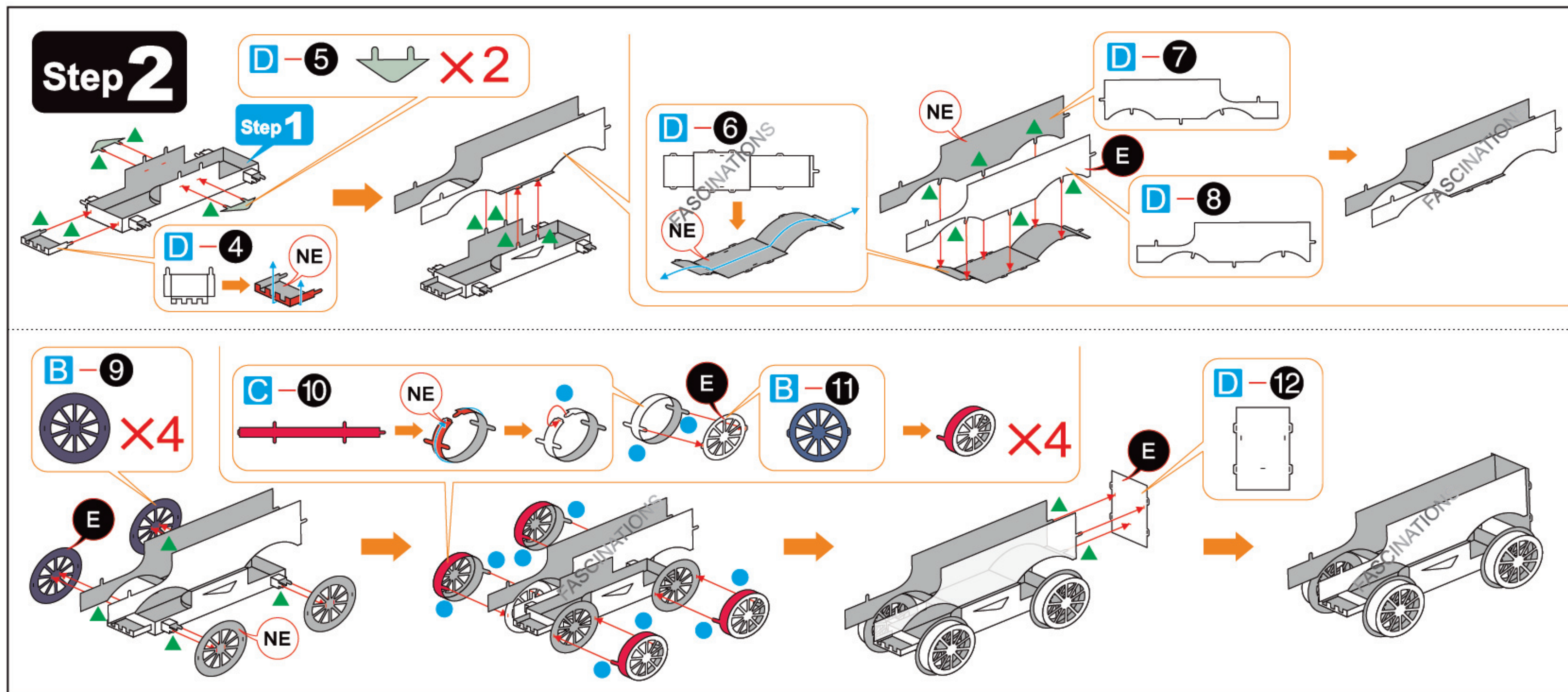
C



D

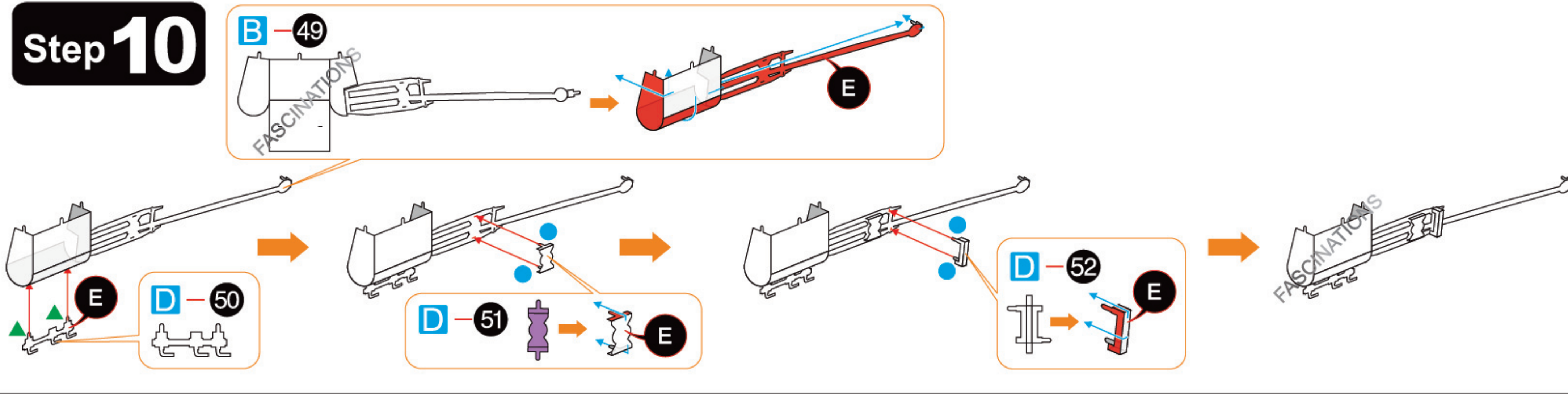




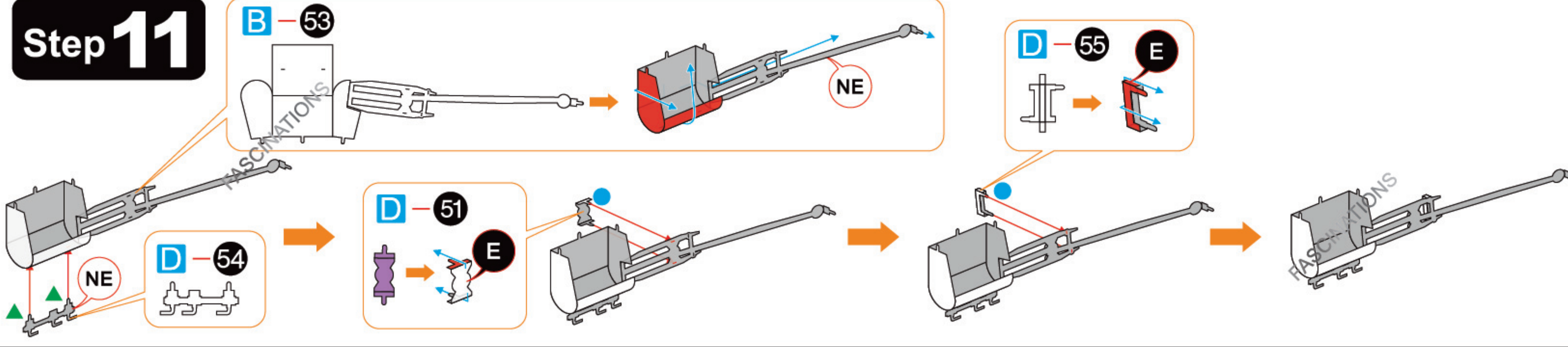




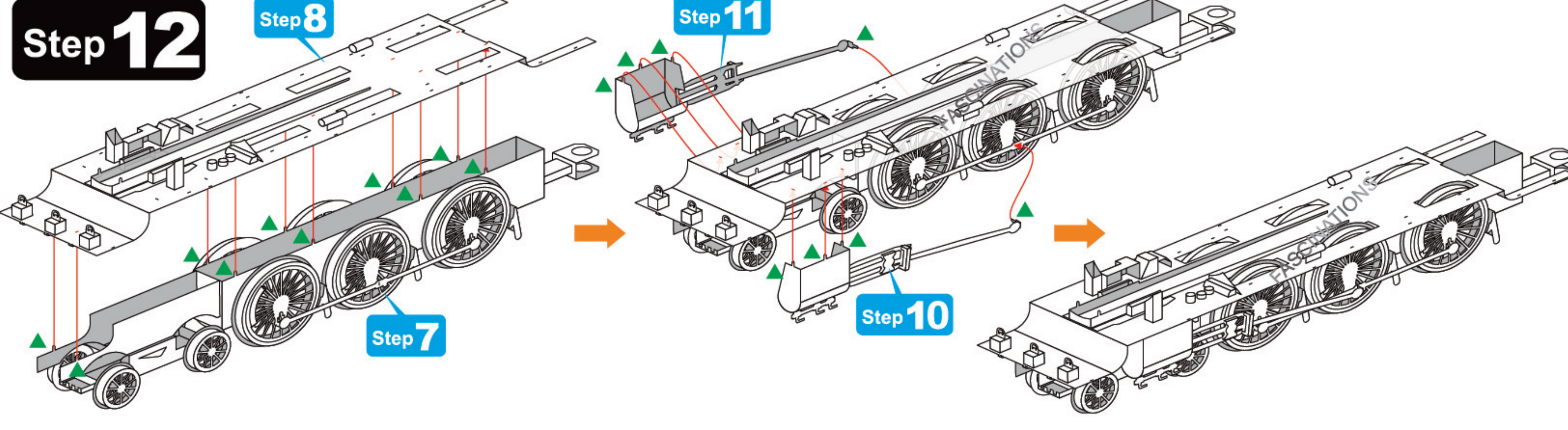
# Step 10



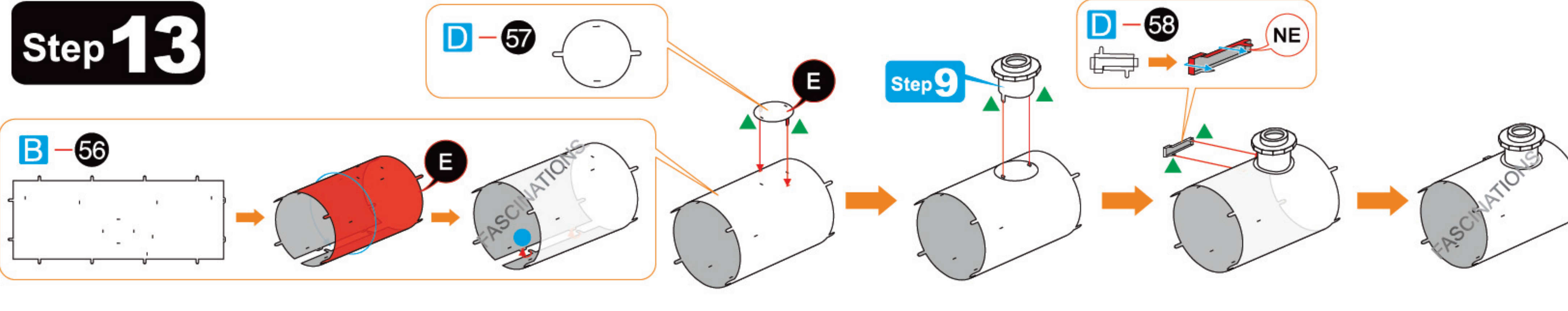
# Step 11



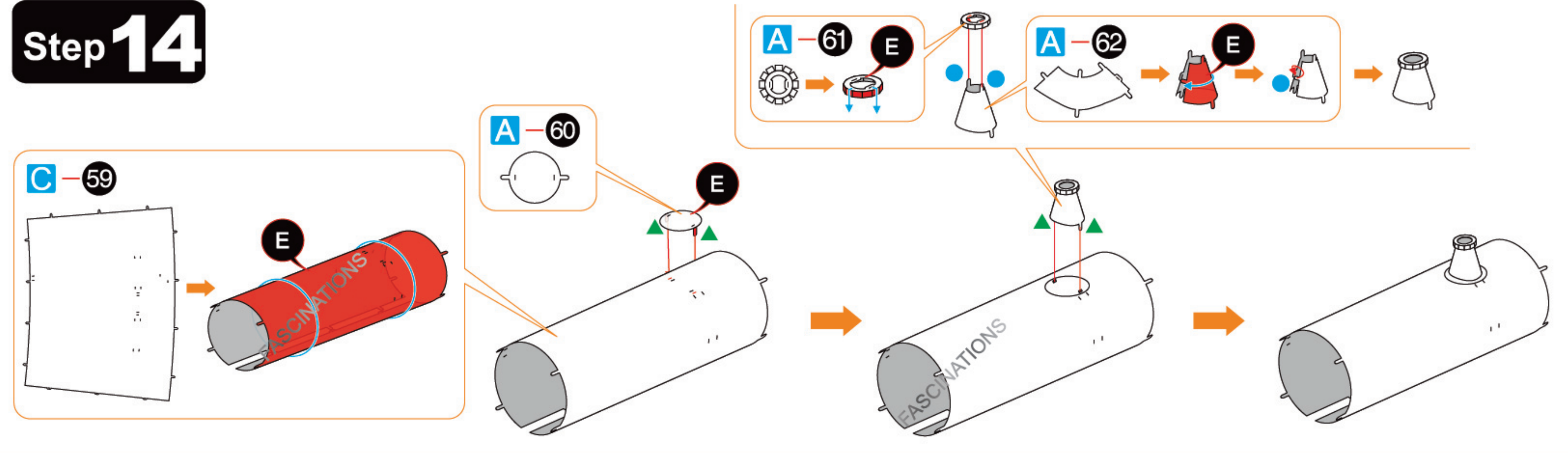
# Step 12



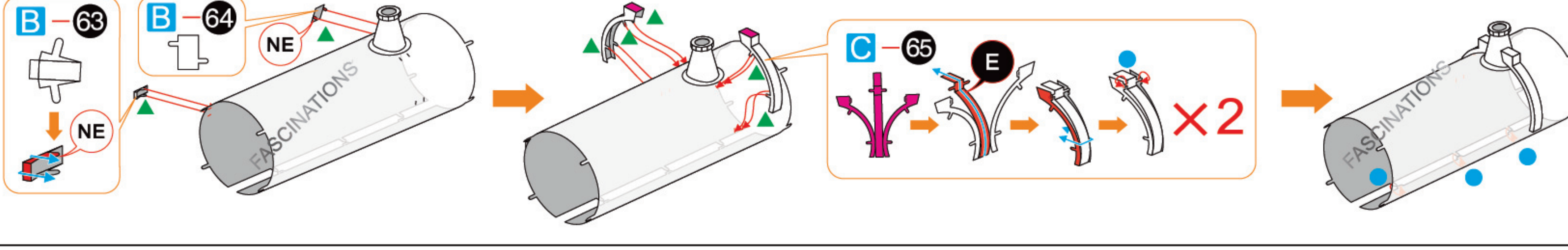
# Step 13



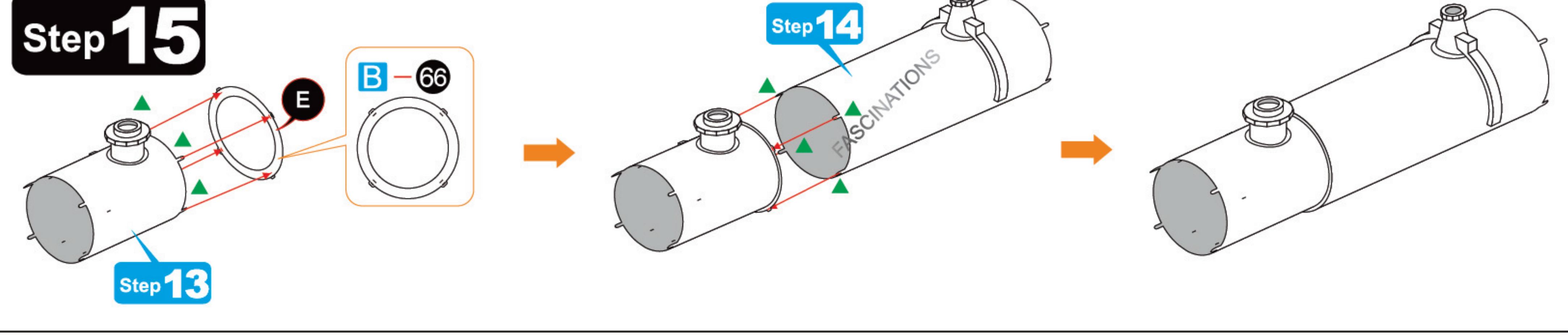
# Step 14



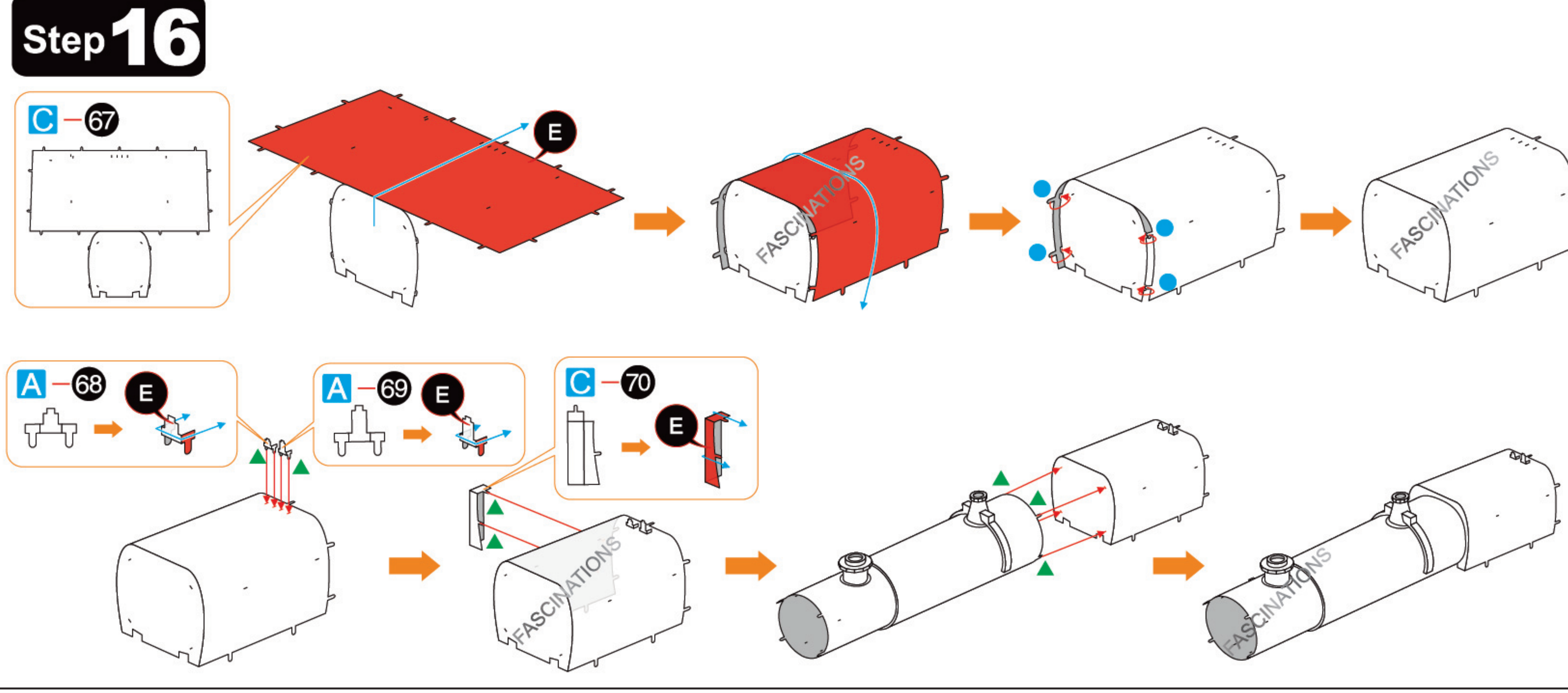
# Step 15



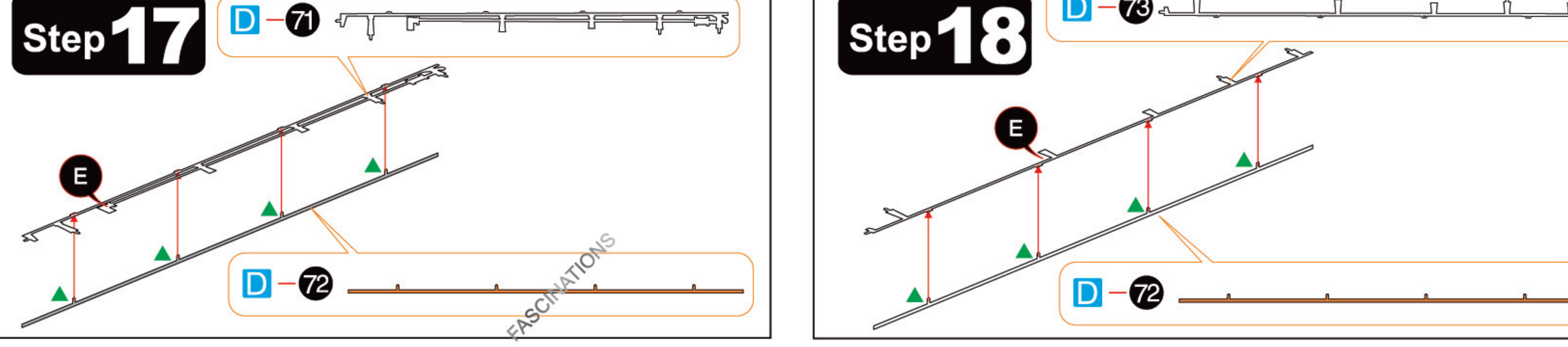
# Step 16



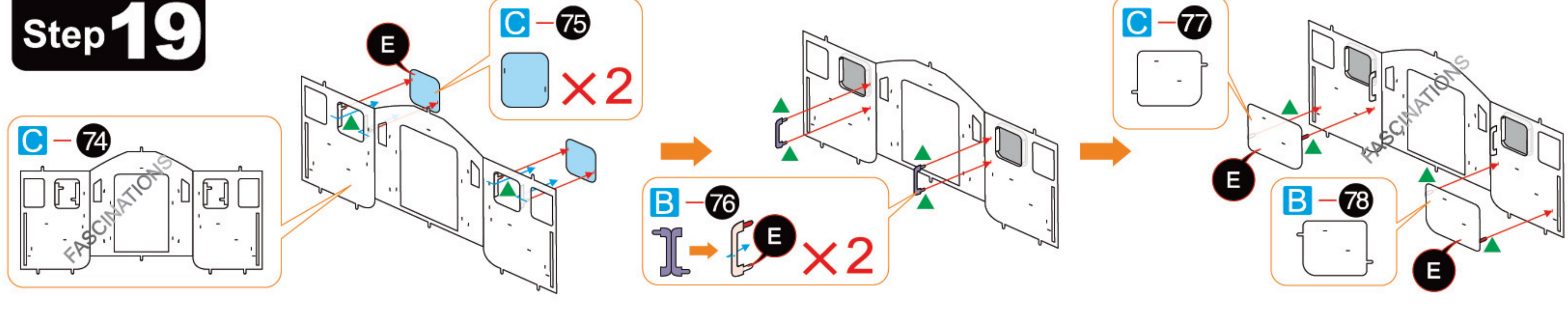
# Step 17



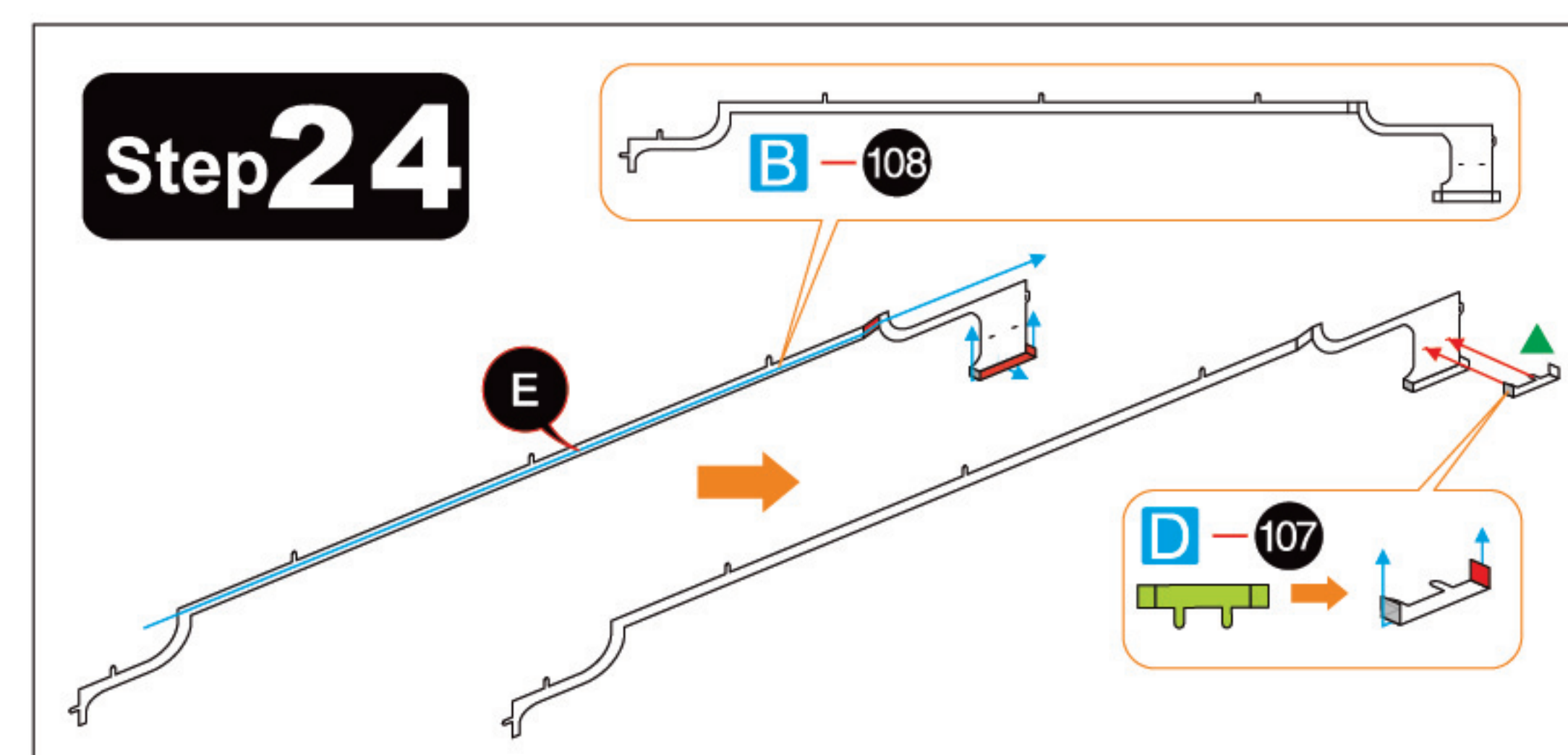
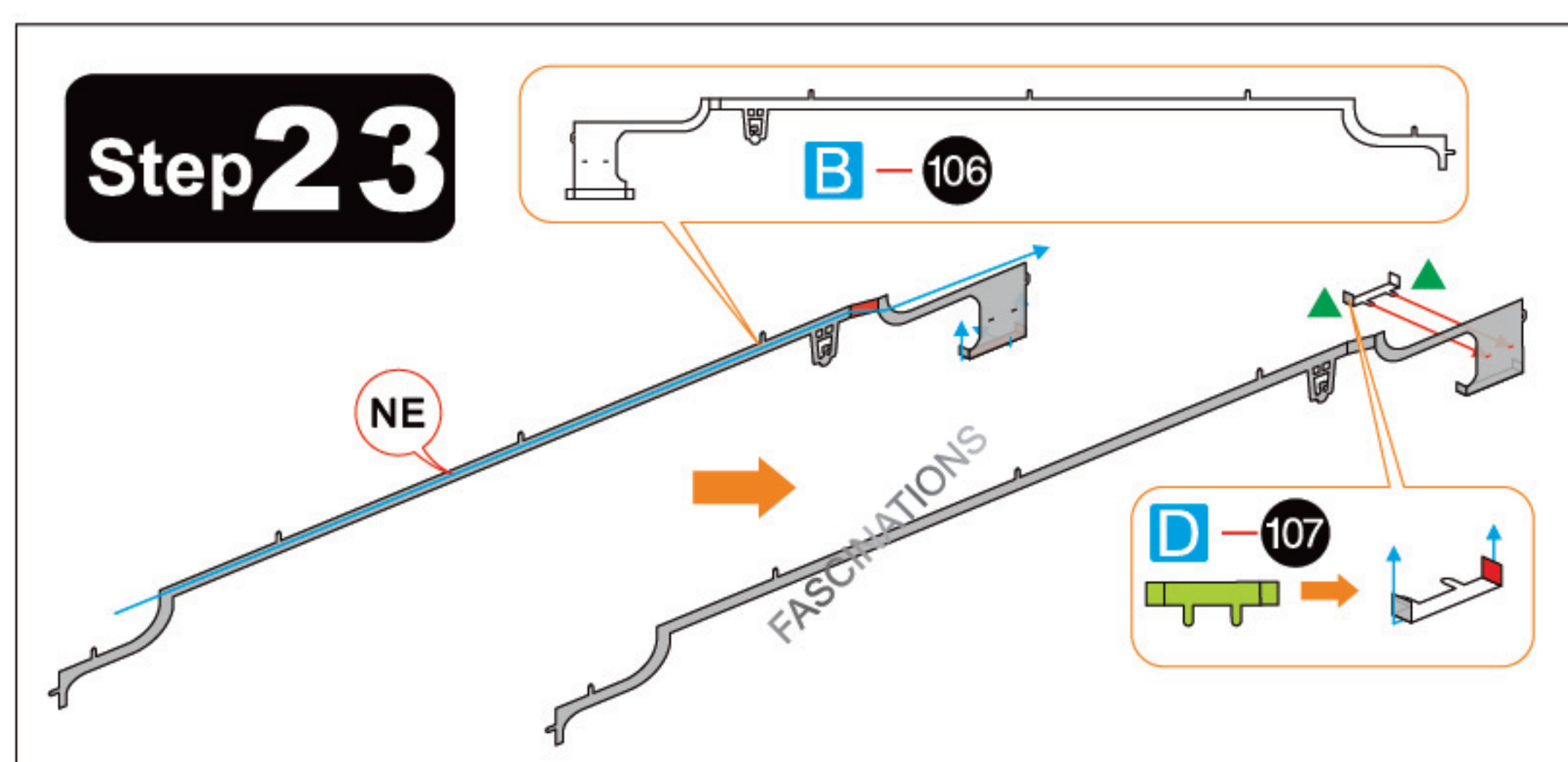
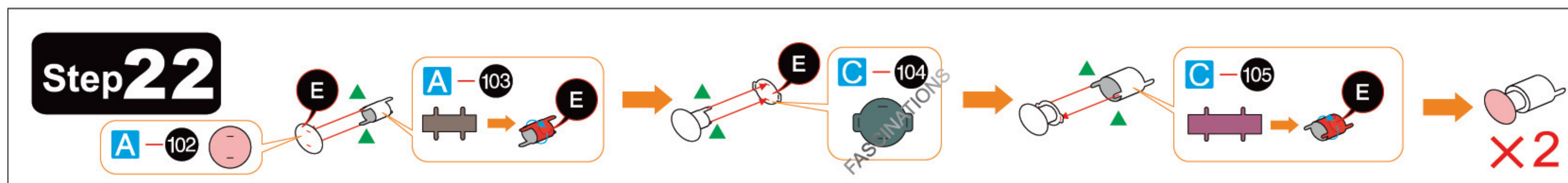
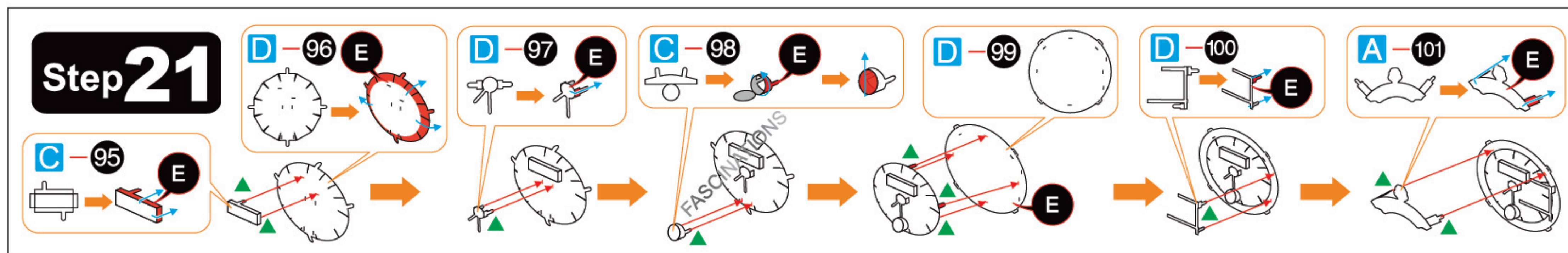
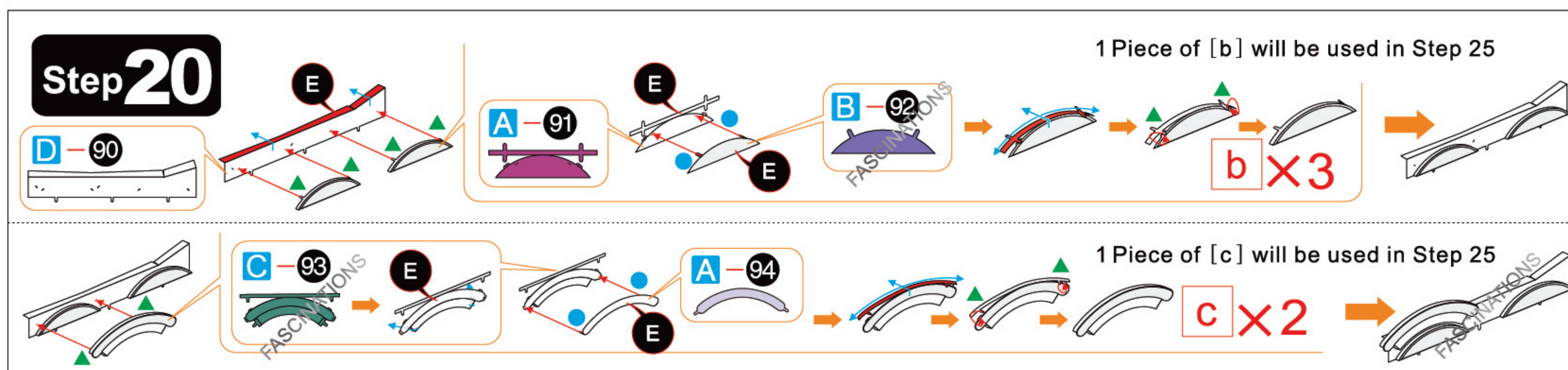
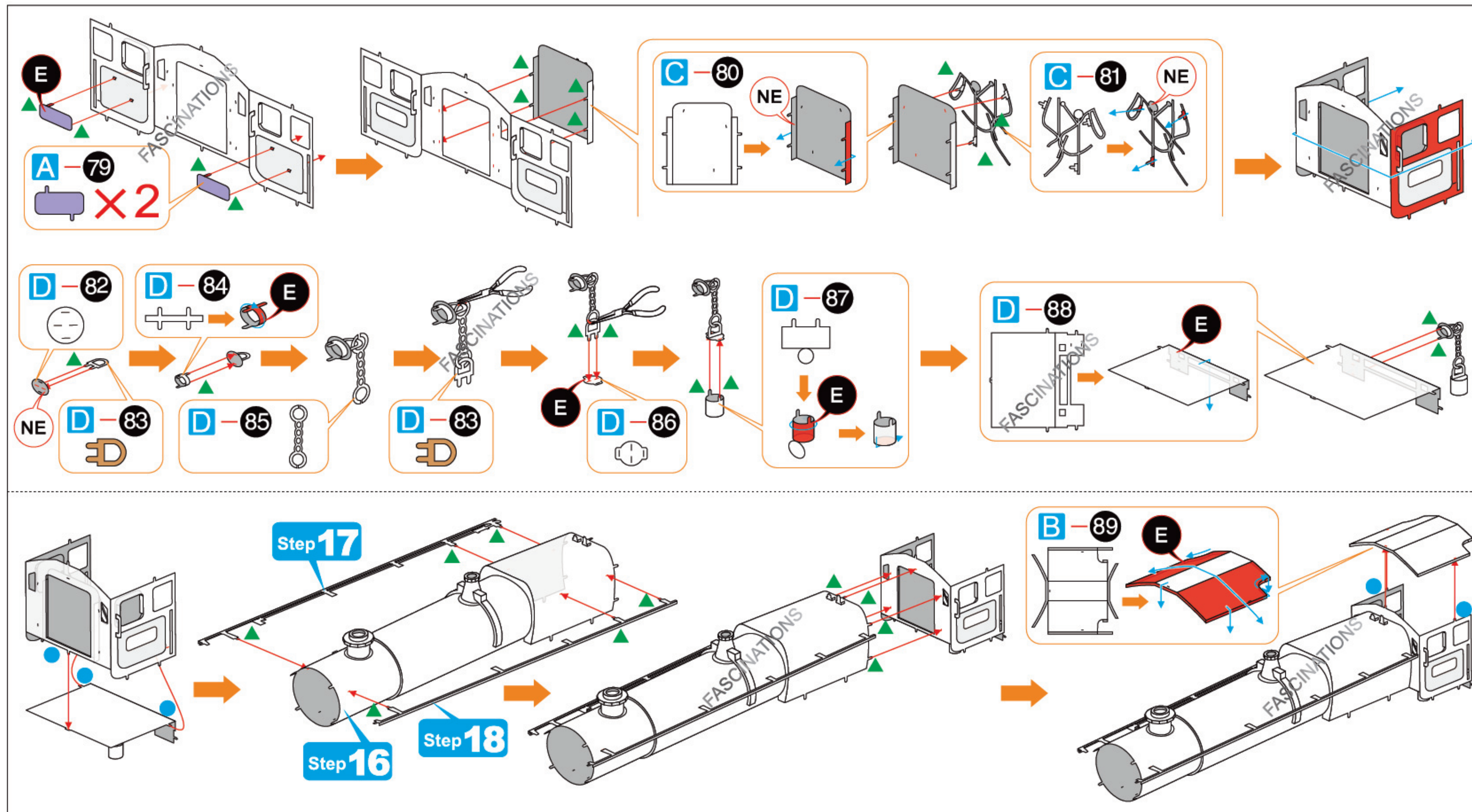
# Step 18



# Step 19







## Step 25

