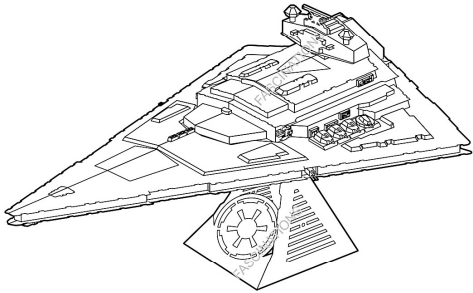




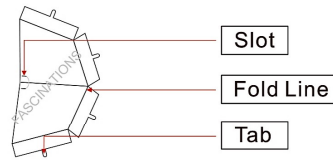
It is highly recommended that you visit [www.metalearth.com/360/icx130](http://www.metalearth.com/360/icx130) to see the completed model before assembling your own

### ICX130



## IMPERIAL STAR DESTROYER

### TO CREATE THE BEST CONNECTIONS



#### Legends:

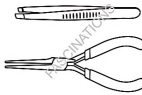
- Engraved side
- Non-engraved side
- Attention point
- Insert tab and bend 90 degrees
- Insert tab and twist 90 degrees

#### Recommended tools:

-Wire cutters: helpful for taking parts from the metal sheets.



-Tweezers or needle nose pliers: helpful for folding parts, bending and twisting tabs.

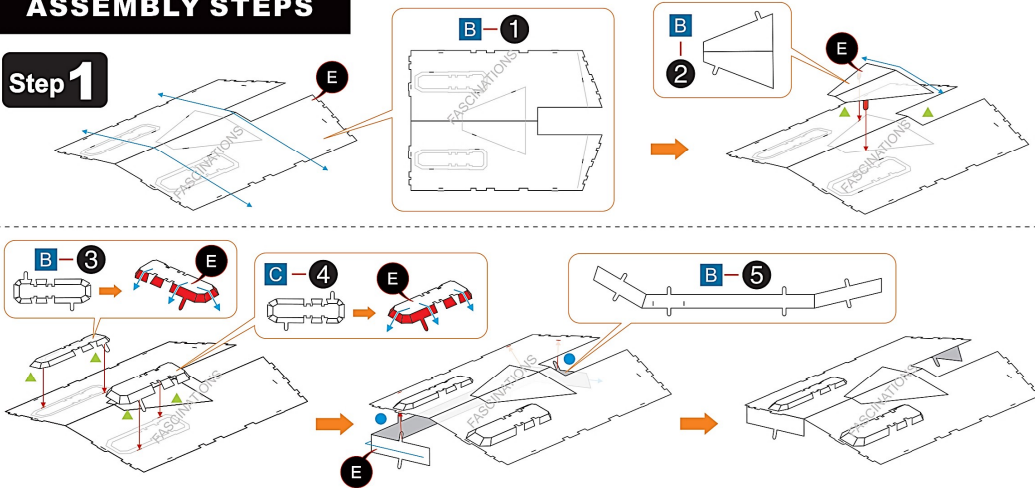


#### Assembly tip:

If needed, slightly twist tabs to hold parts together then untwist and bend them down for a nice finish

### ASSEMBLY STEPS

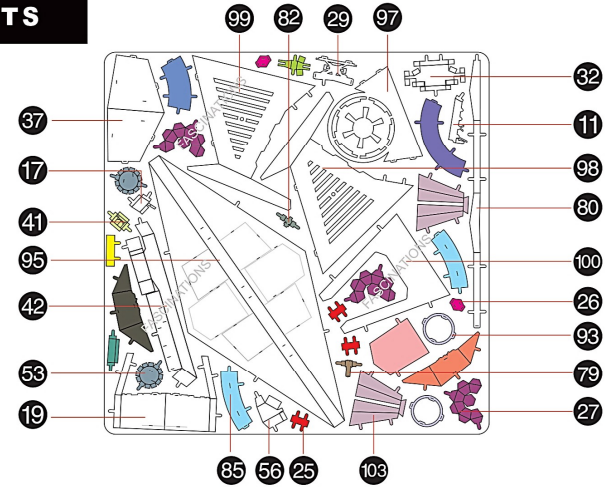
#### Step 1



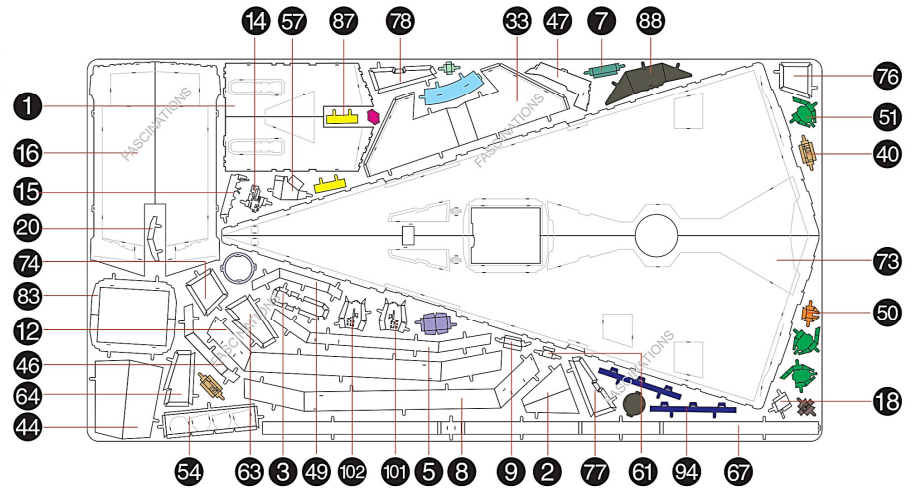
In order to avoid possible injury from sharp edges, please carefully discard the metal sheets after parts have been removed.

### METAL SHEETS

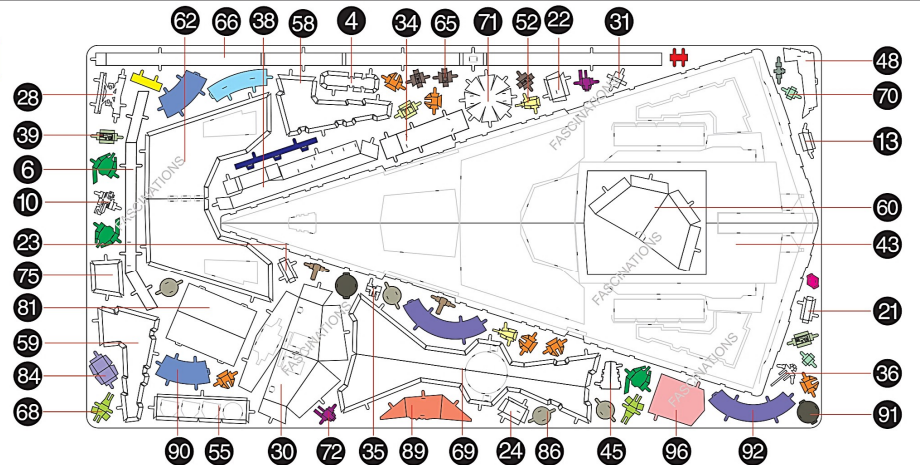
#### A

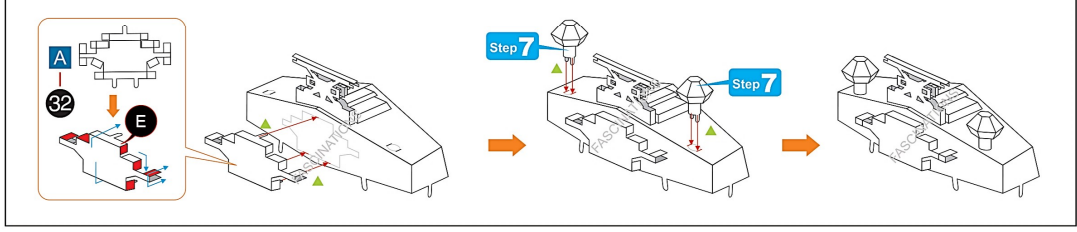
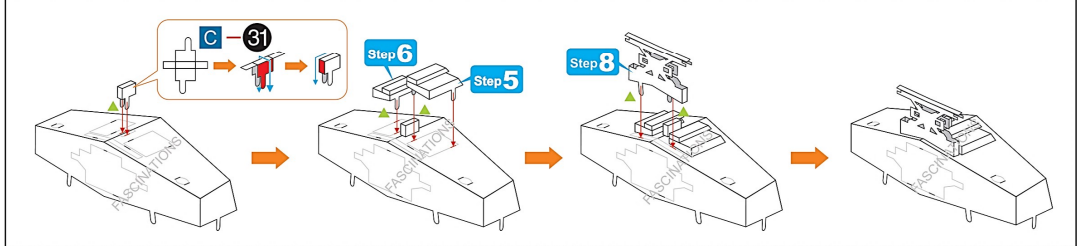
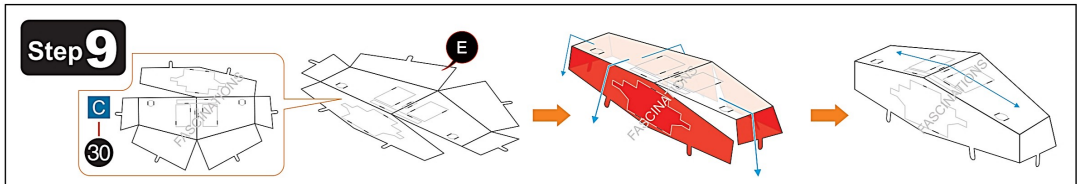
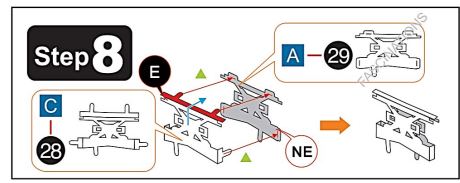
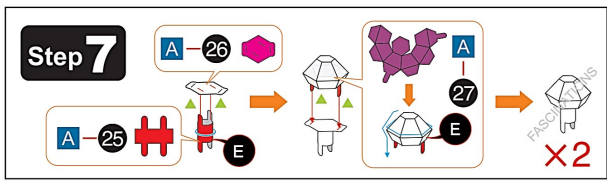
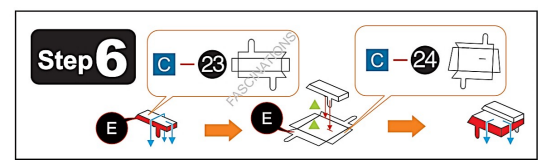
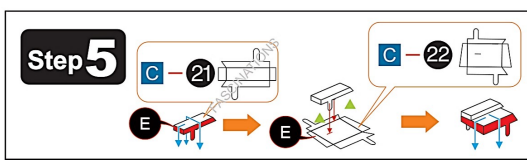
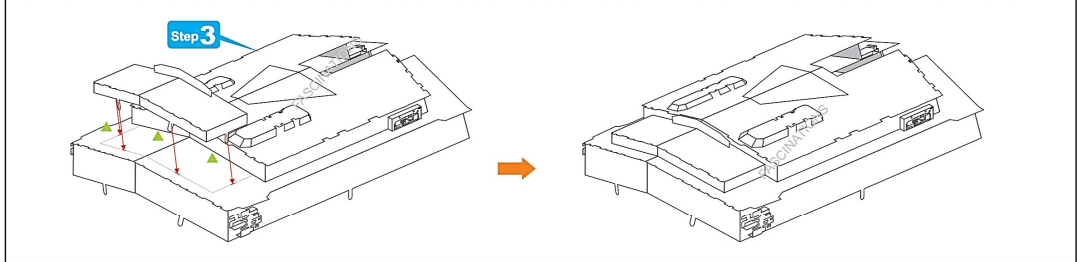
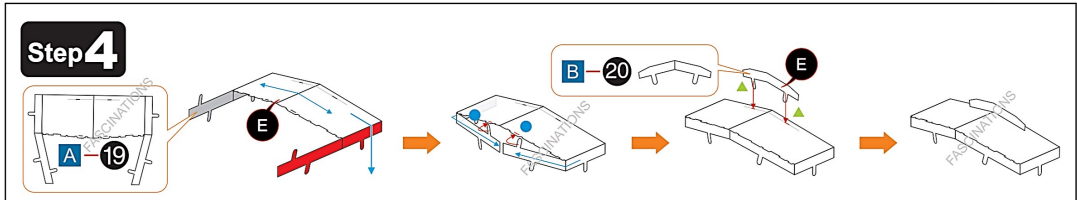
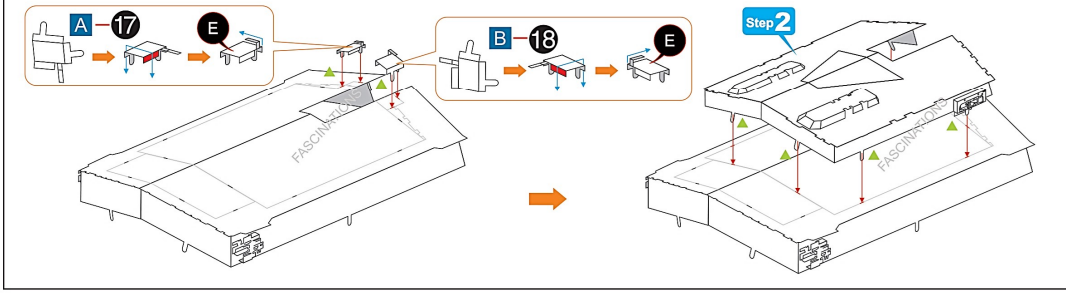
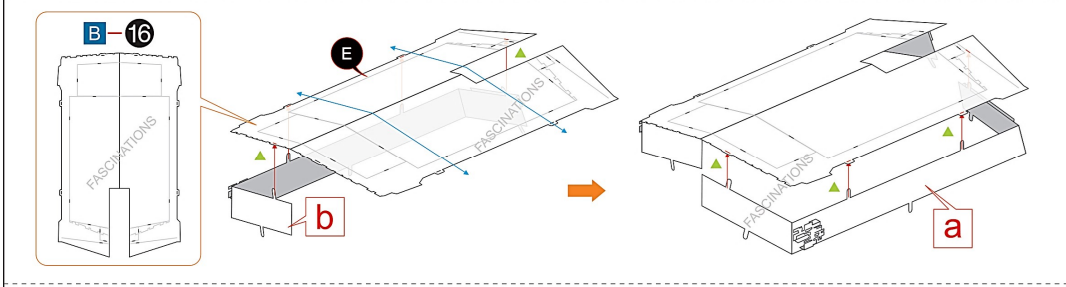
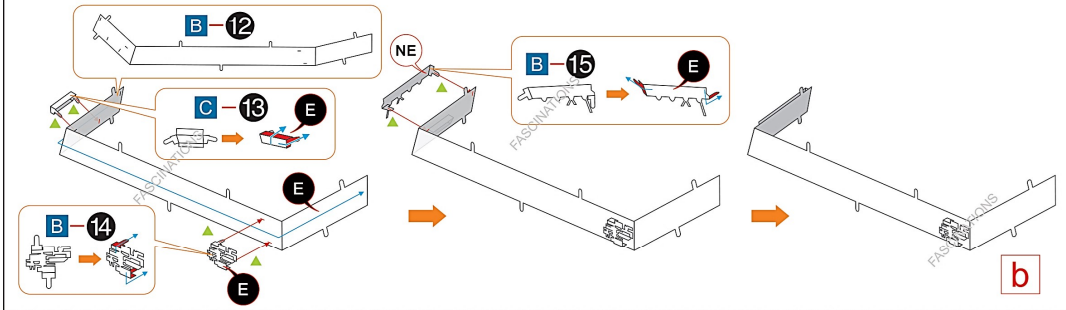
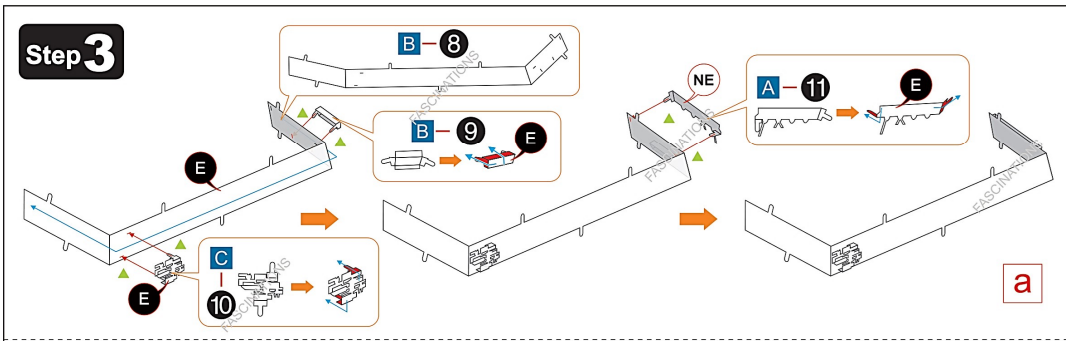
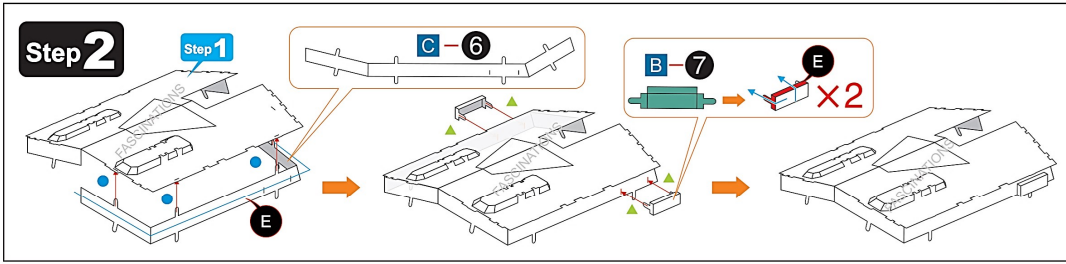


#### B

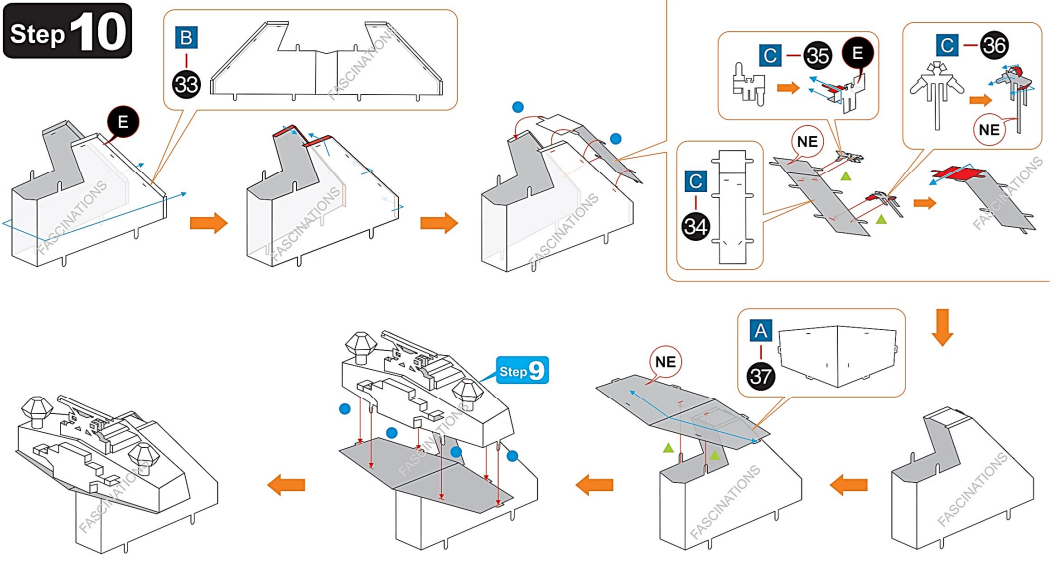


#### C



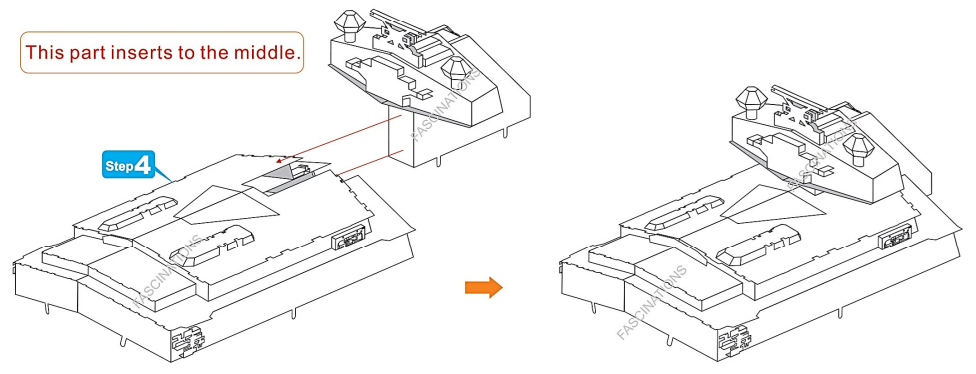


### Step 10

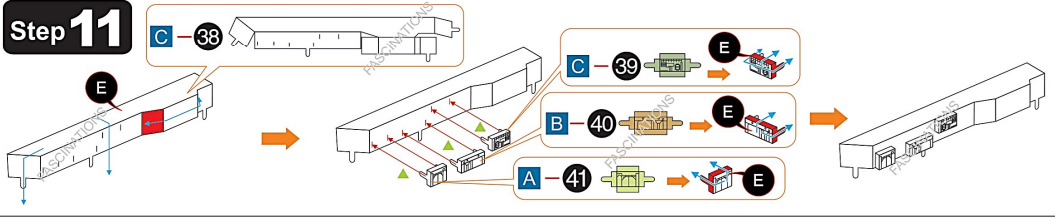


This part inserts to the middle.

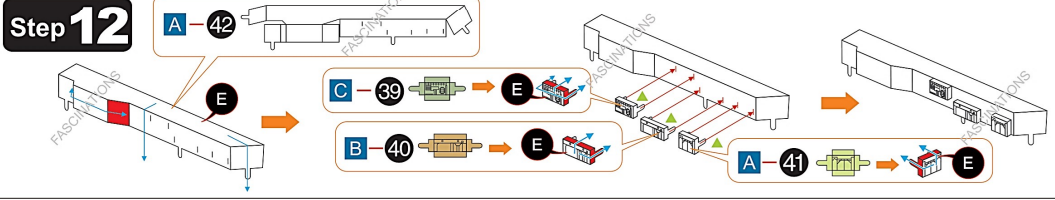
### Step 4



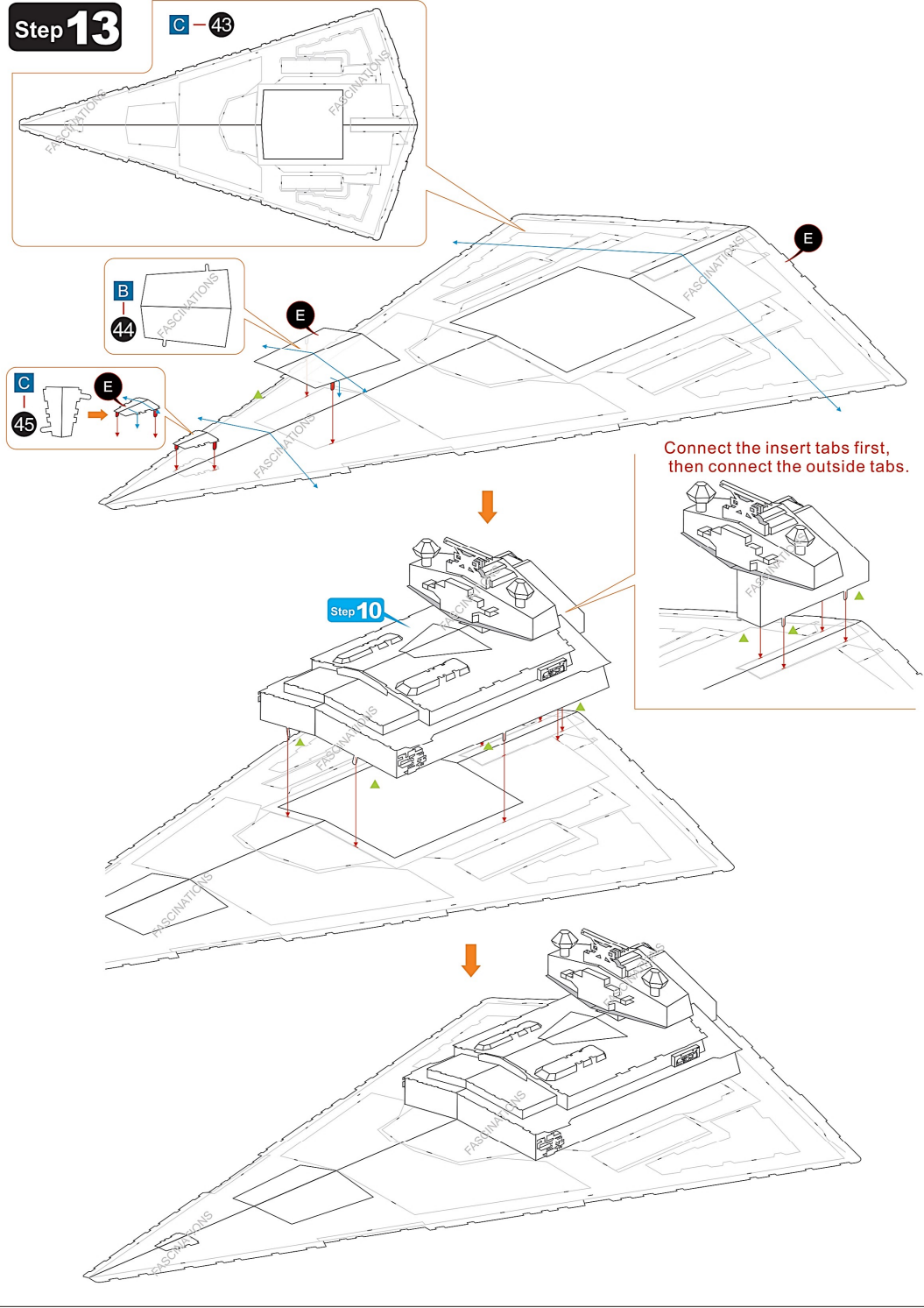
### Step 11



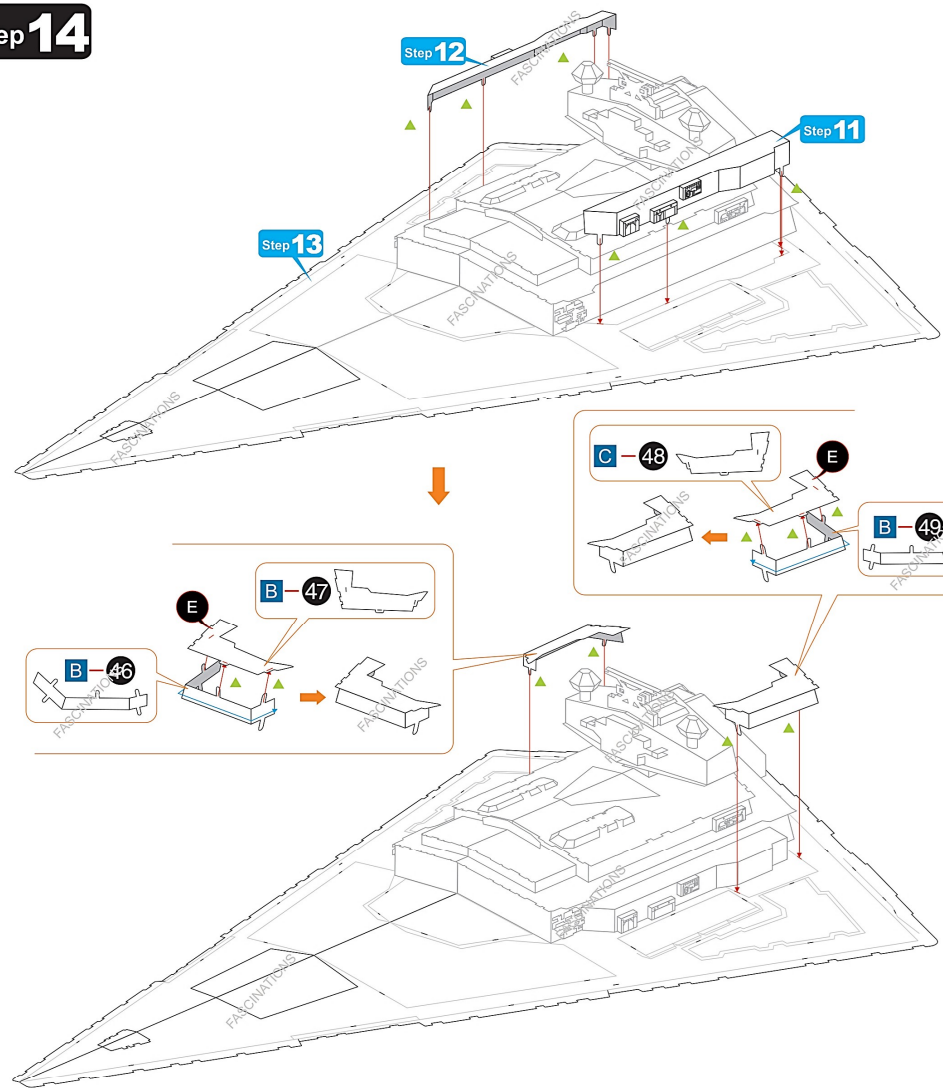
### Step 12



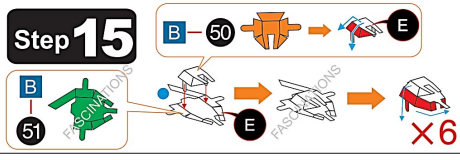
### Step 13



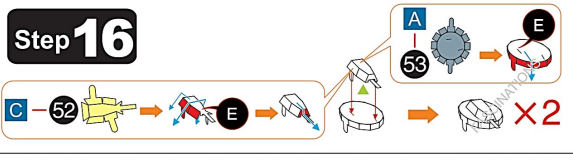
# Step 14



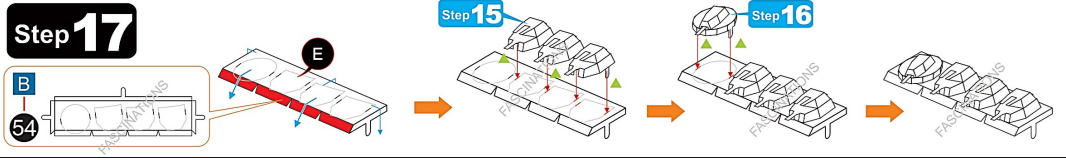
# Step 15



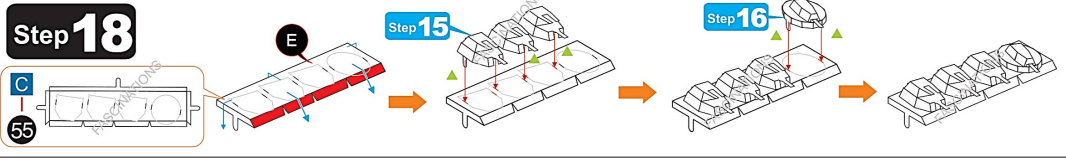
# Step 16



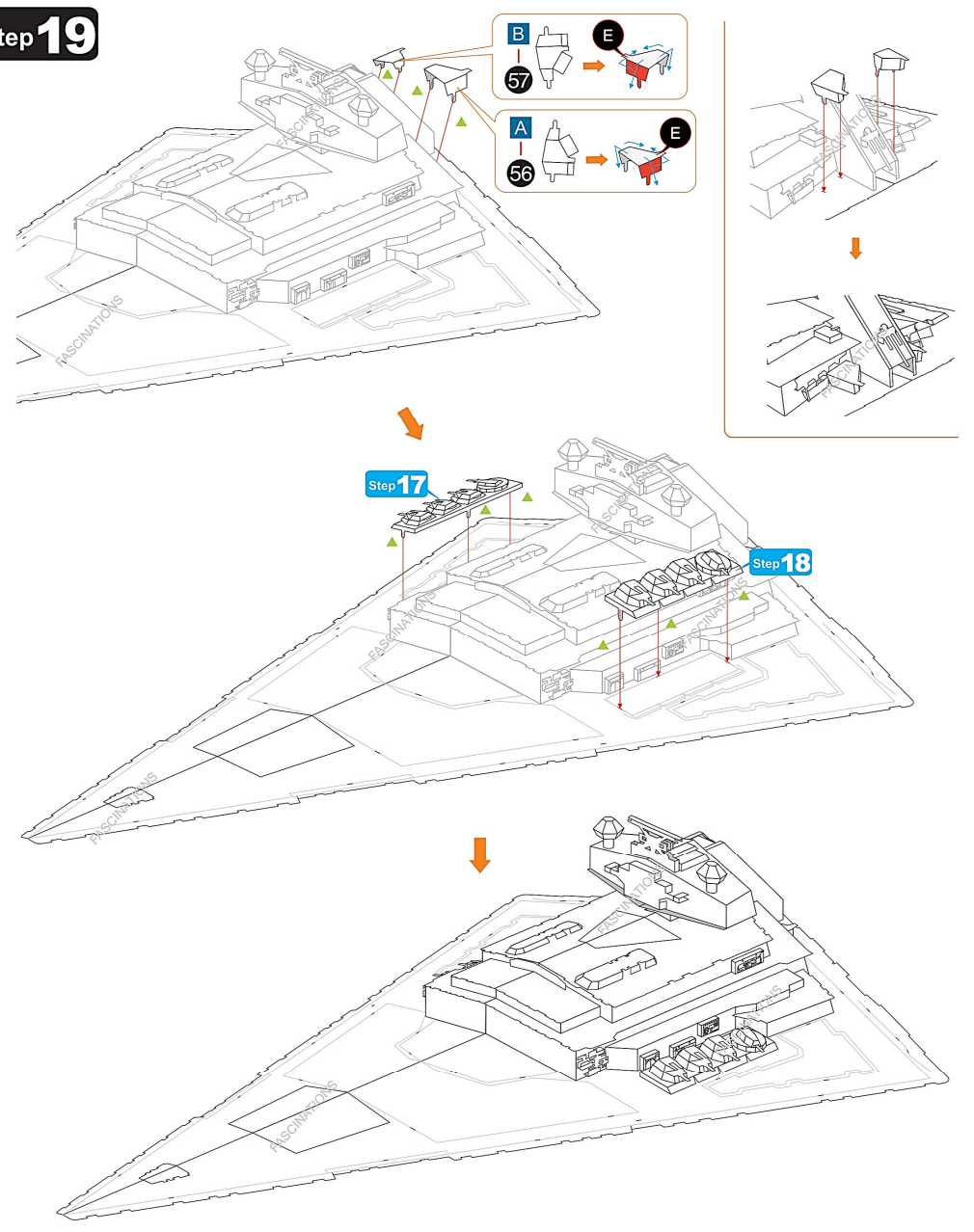
# Step 17



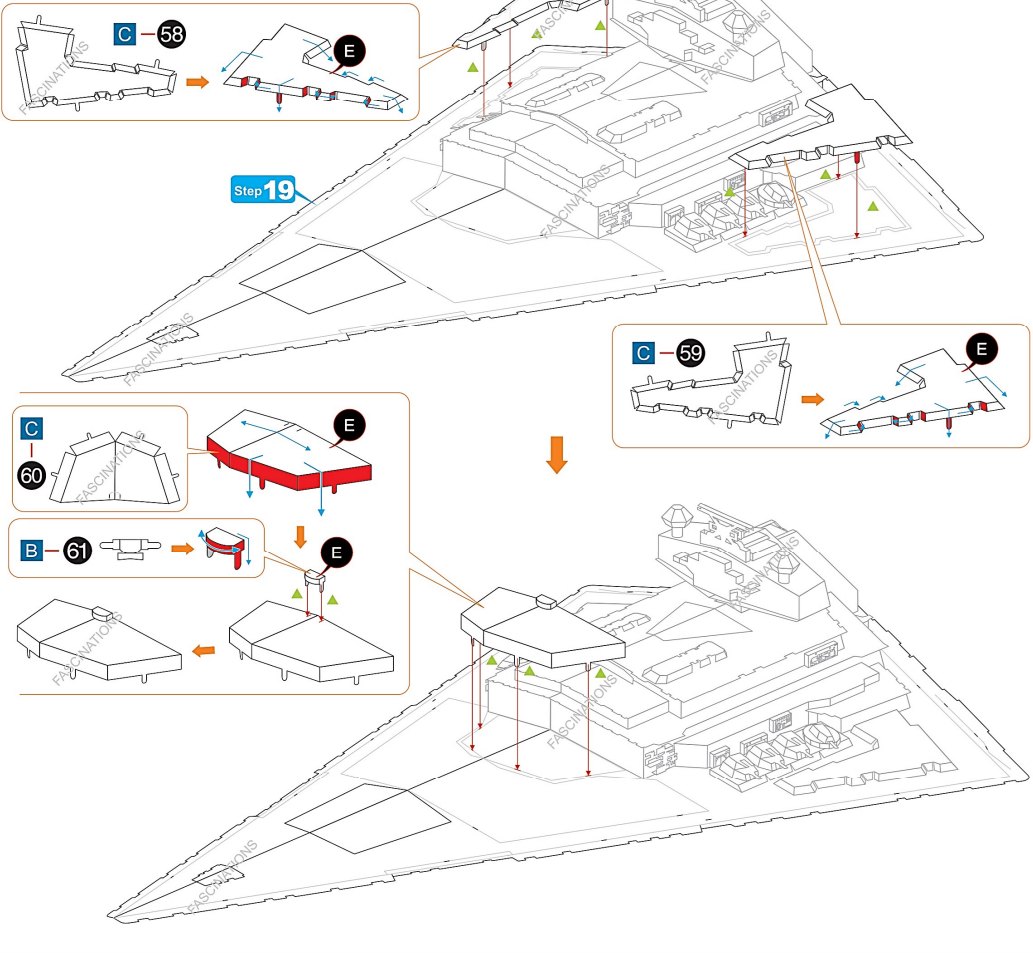
# Step 18



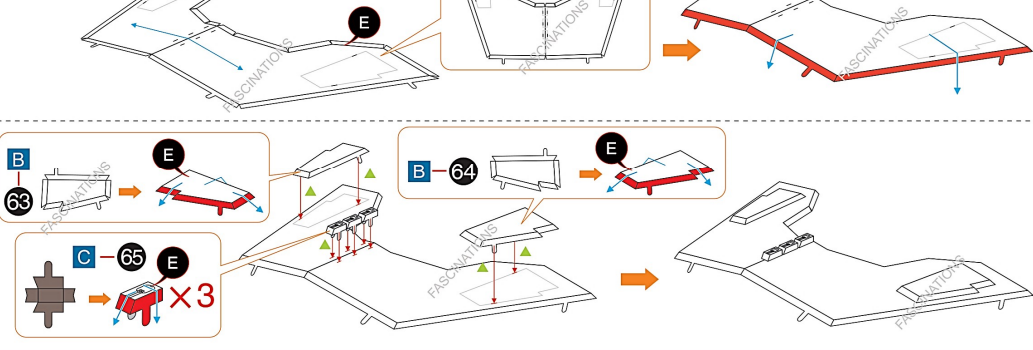
# Step 19



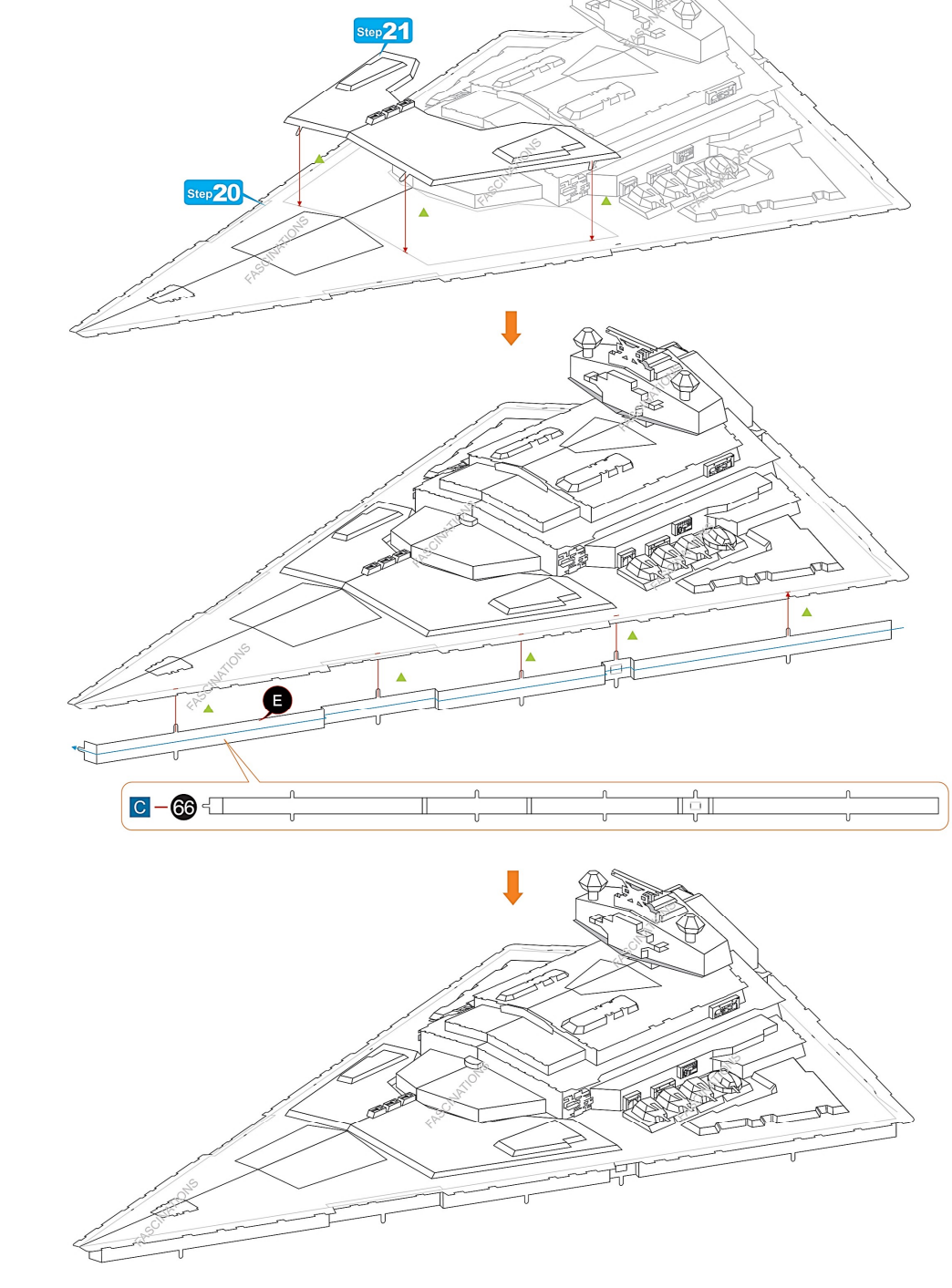
# Step 20



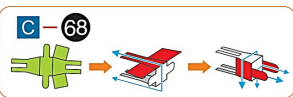
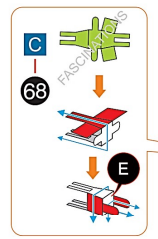
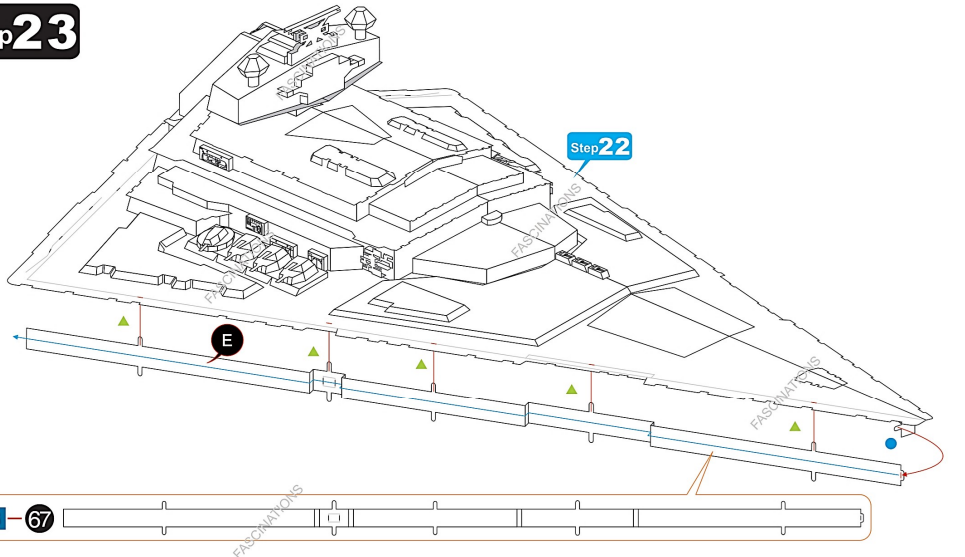
# Step 21



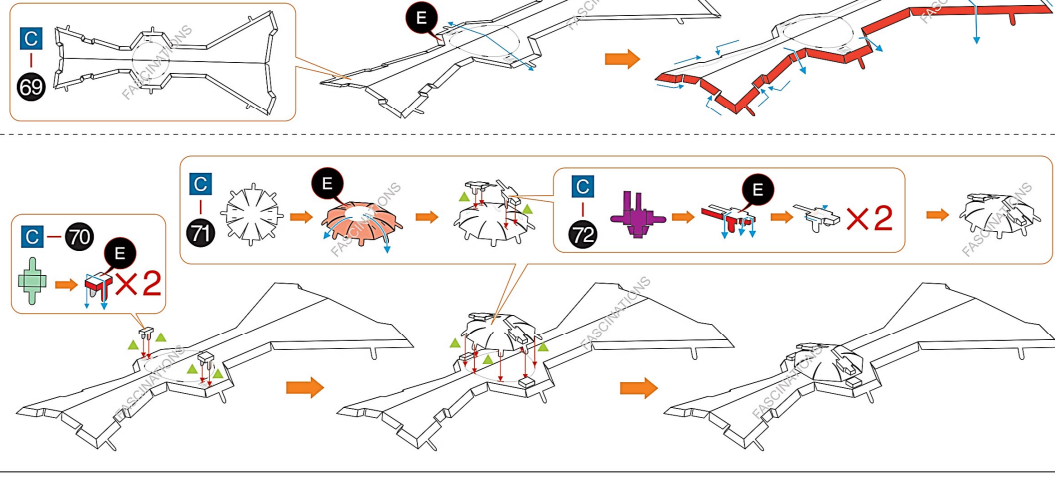
# Step 22



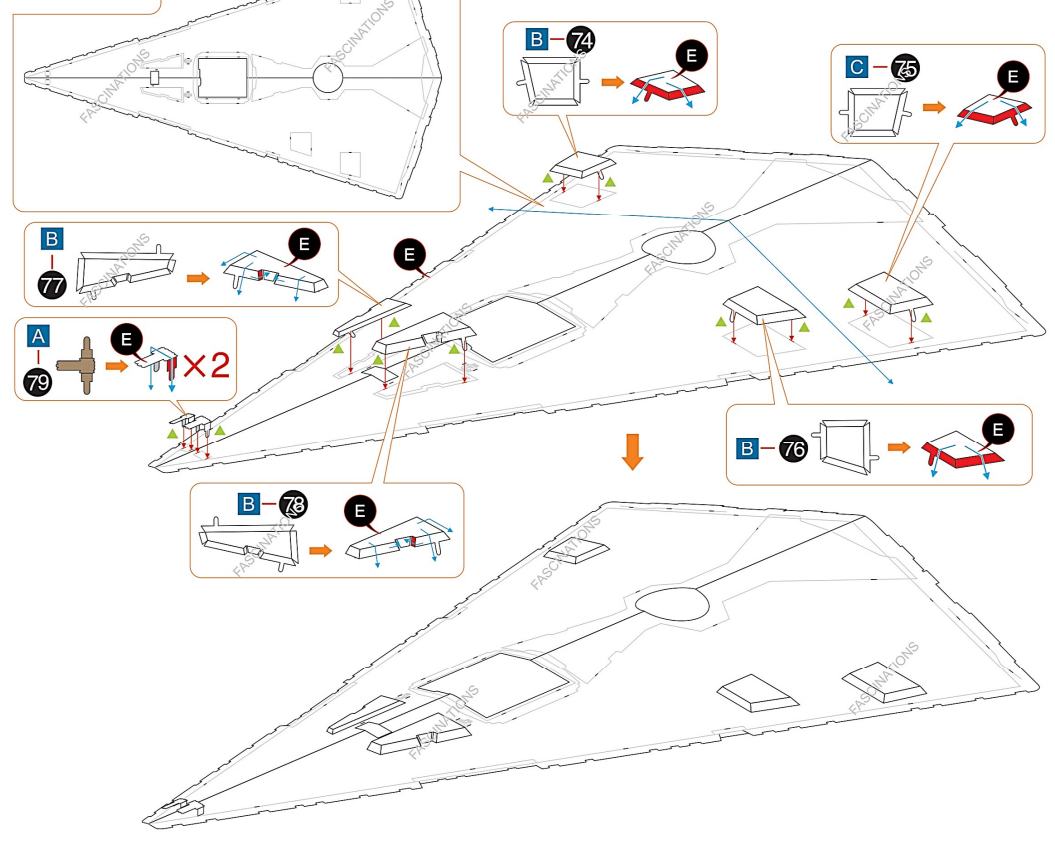
# Step 23



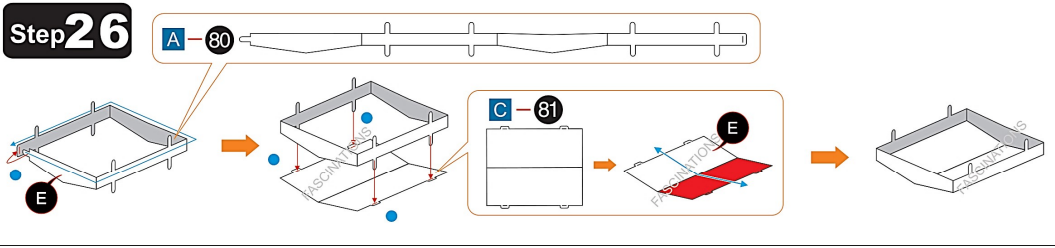
# Step 24



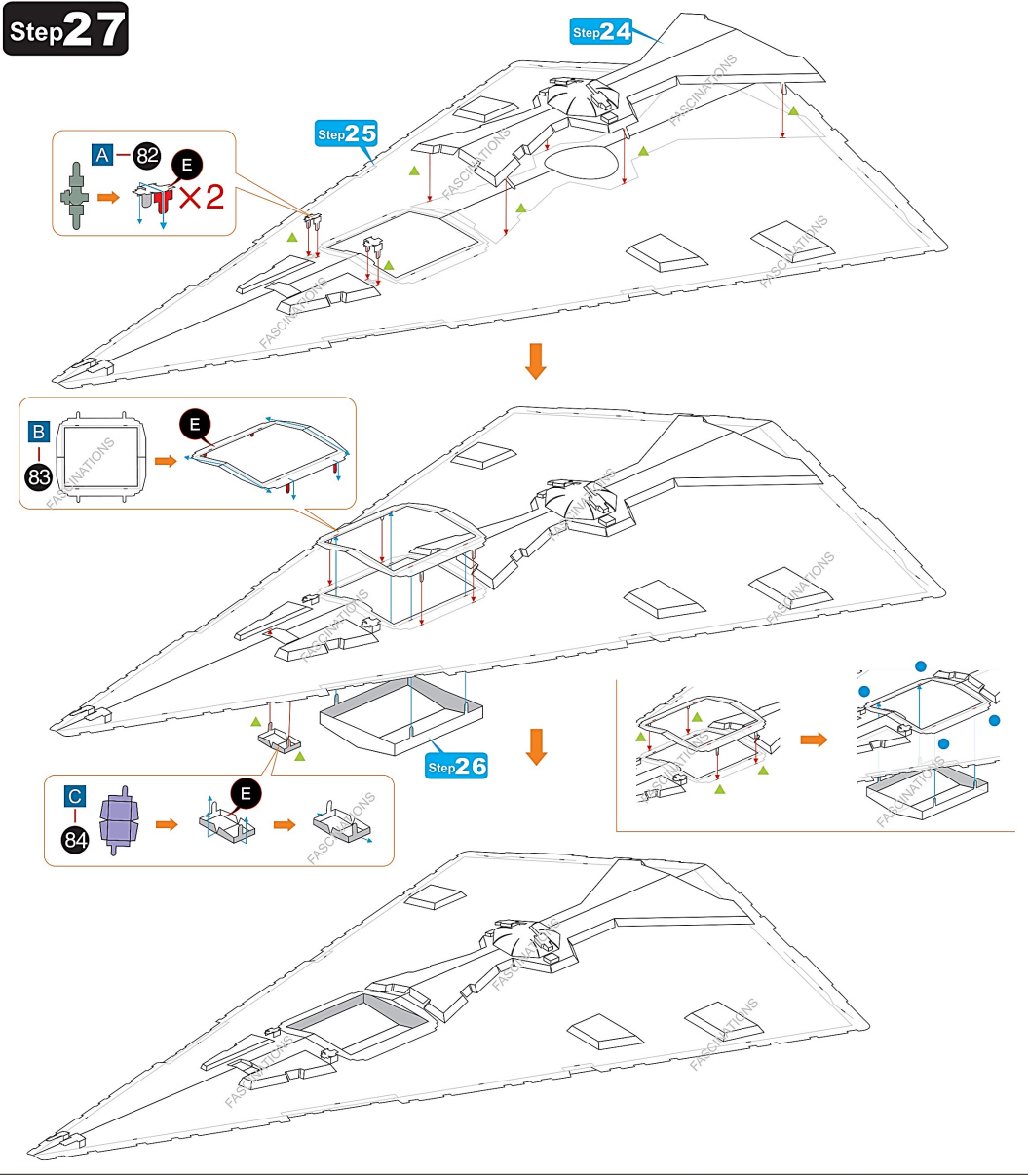
# Step 25



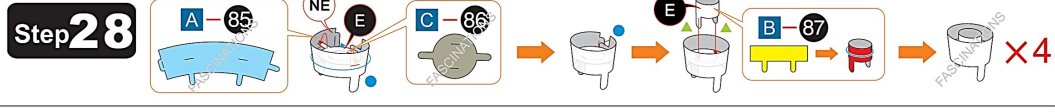
### Step 26



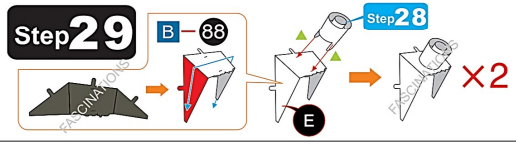
### Step 27



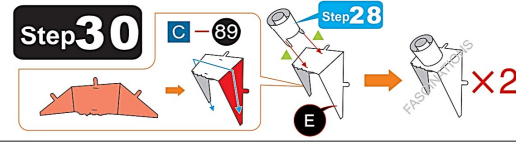
### Step 28



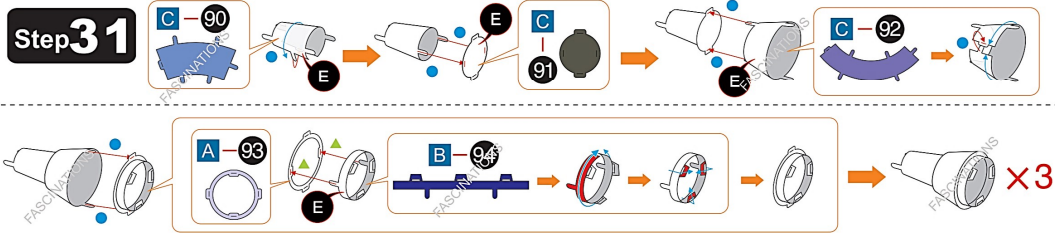
### Step 29



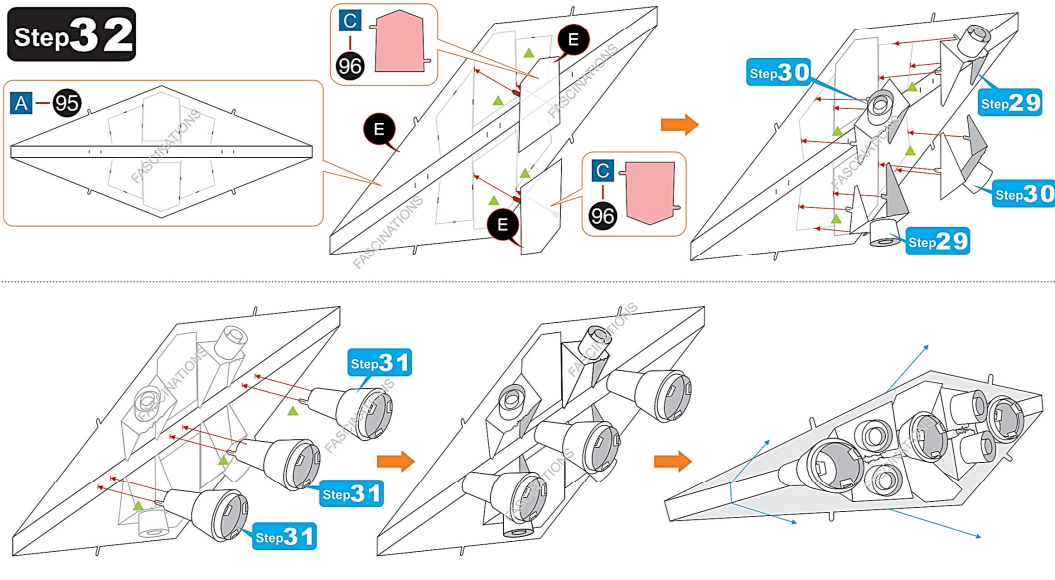
### Step 30



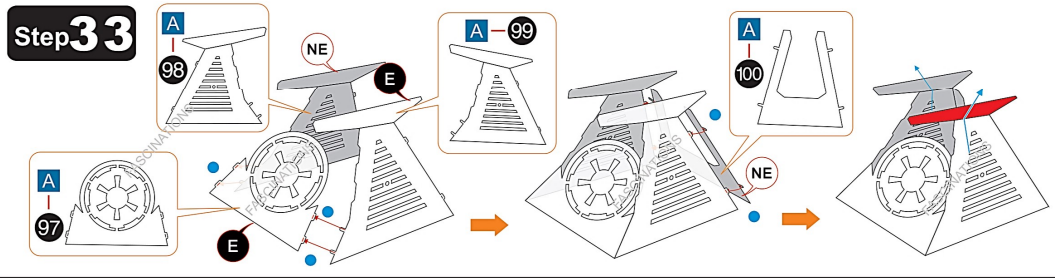
### Step 31



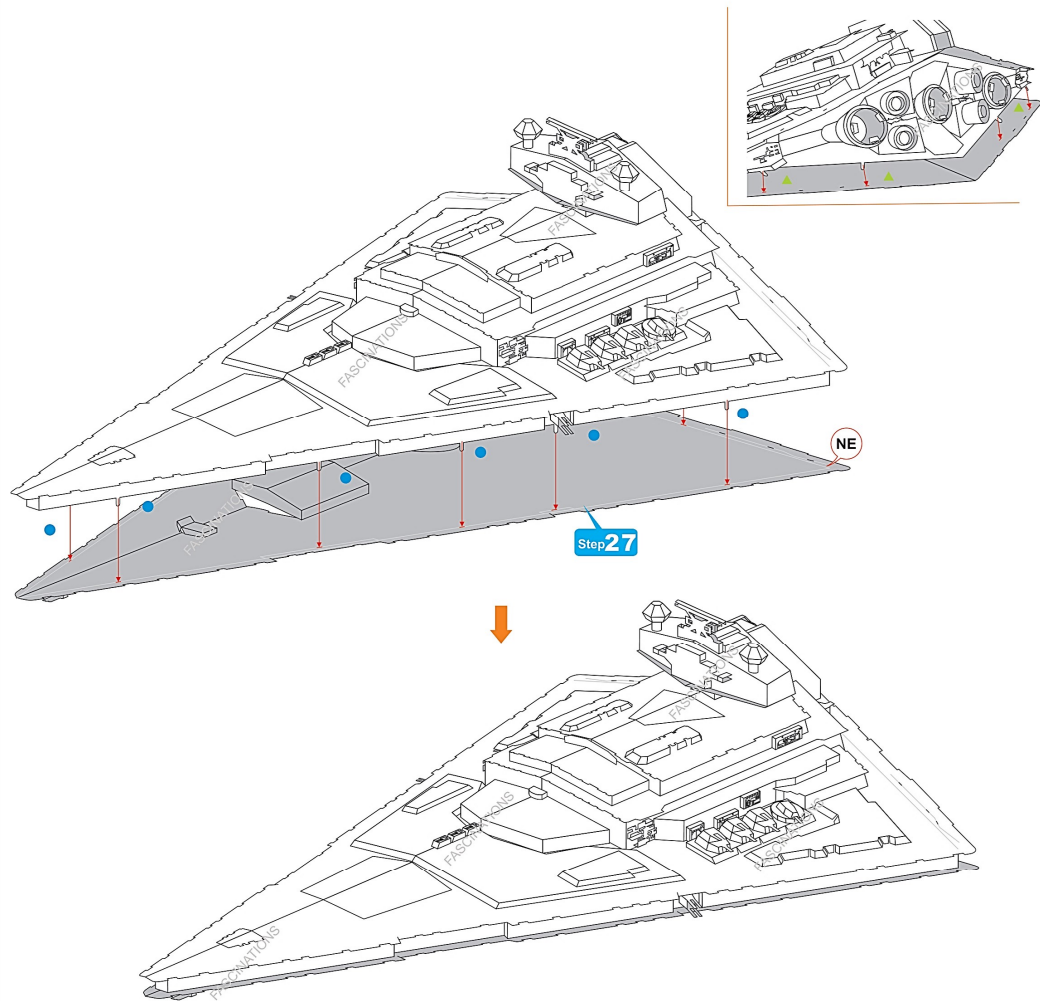
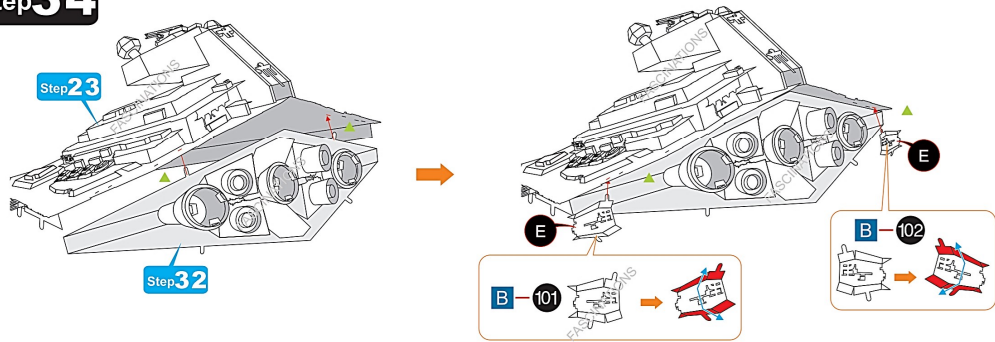
### Step 32



### Step 33



### Step 34



### Step 35

