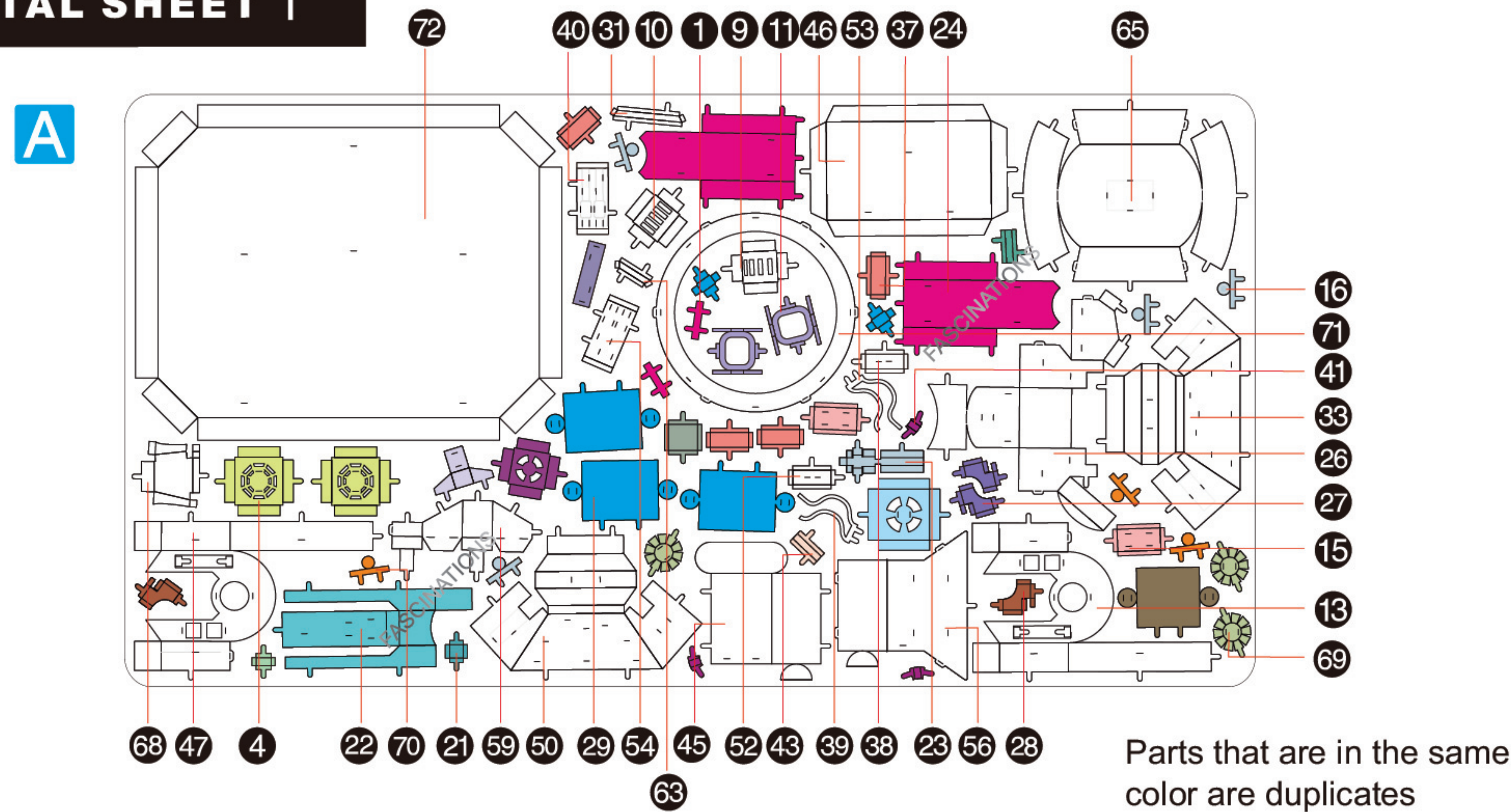
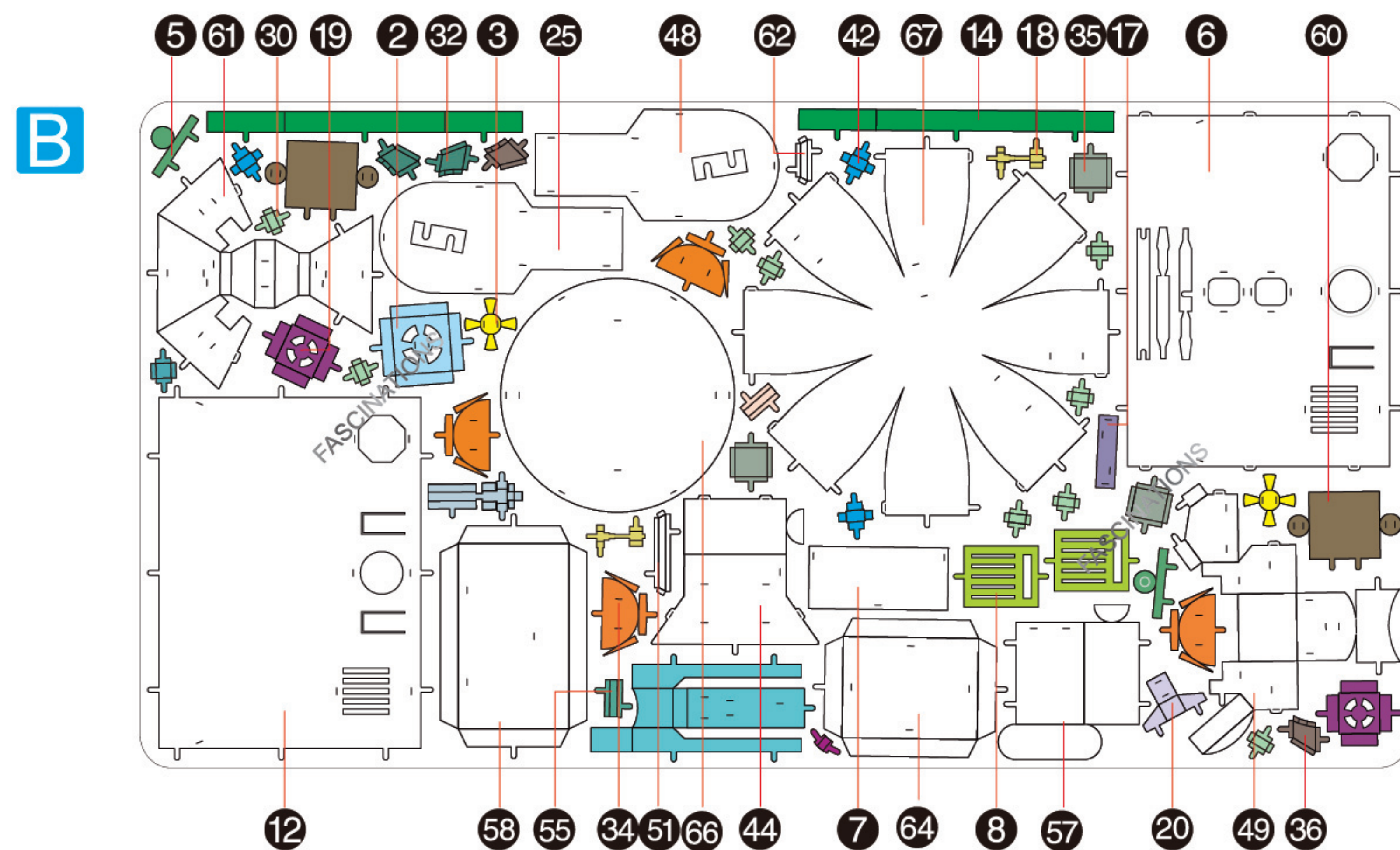


### METAL SHEET 1

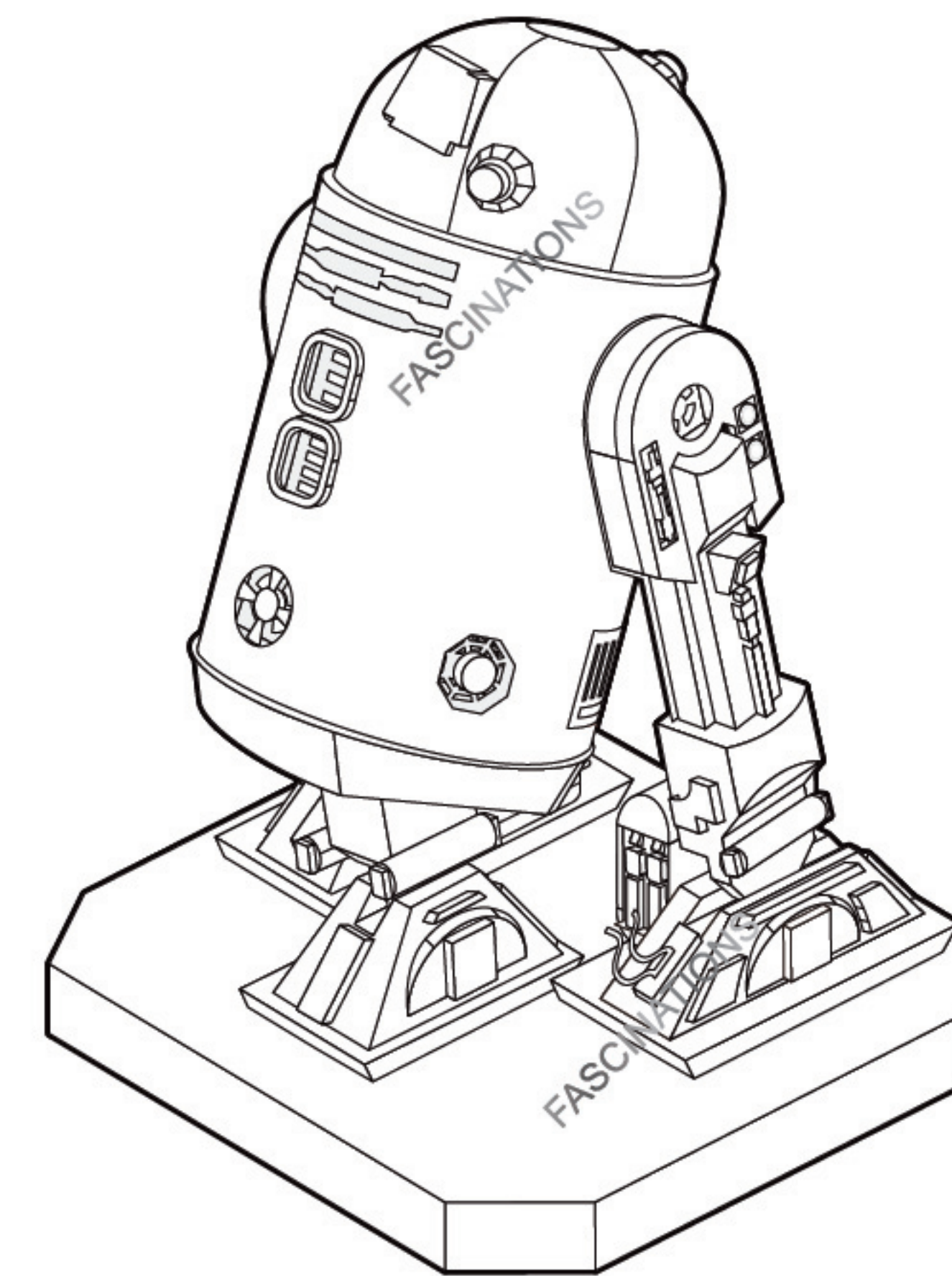


### METAL SHEET 2



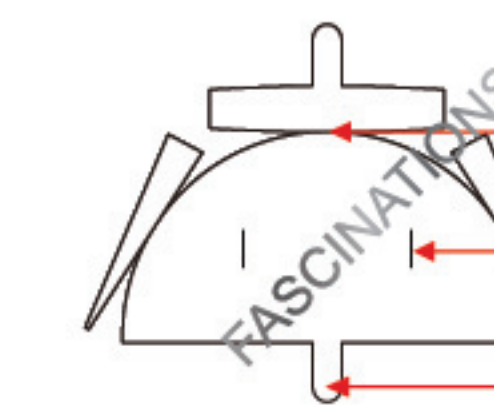
In order to avoid possible injury from sharp edges, please carefully discard the metal sheets after parts have been removed.

### ICX 131



It is highly recommended that you visit [www.metal-earth.com/360/icx131](http://www.metal-earth.com/360/icx131) to see the completed model before assembling your own

### TO CREATE THE BEST CONNECTIONS



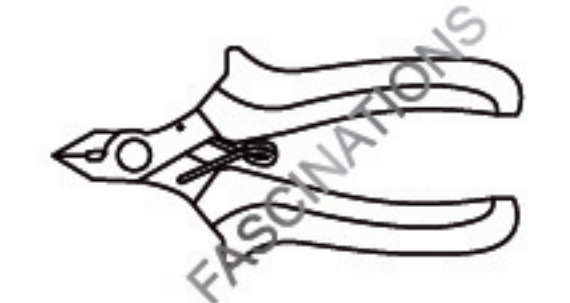
Fold Line  
Slot  
Tab

#### Legends:

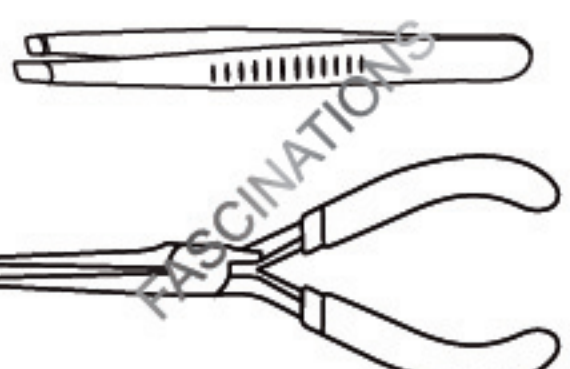
- E** Engraved/Color side
- NE** Non-engraved/Silver side
- Attention point
- Insert tab and bend 90 degrees
- Insert tab and twist 90 degrees

#### Recommended tools:

-Wire cutters: helpful for taking parts from the metal sheets.



-Tweezers or needle nose pliers: helpful for folding parts, bending and twisting tabs.

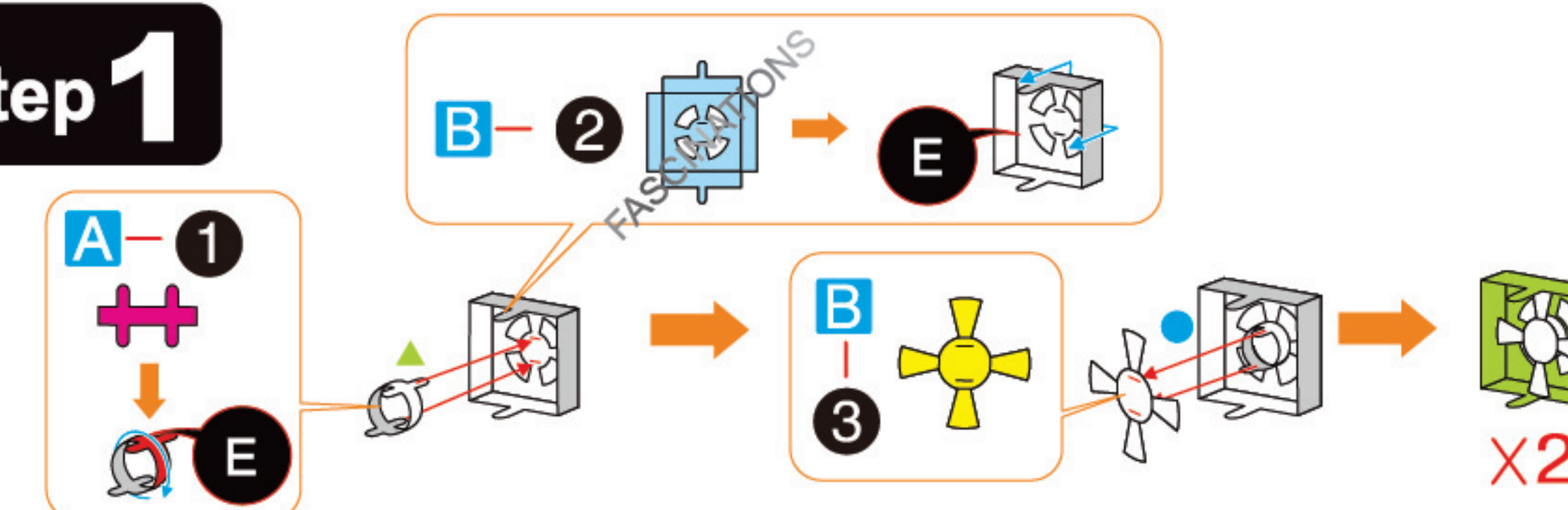


#### Assembly tip:

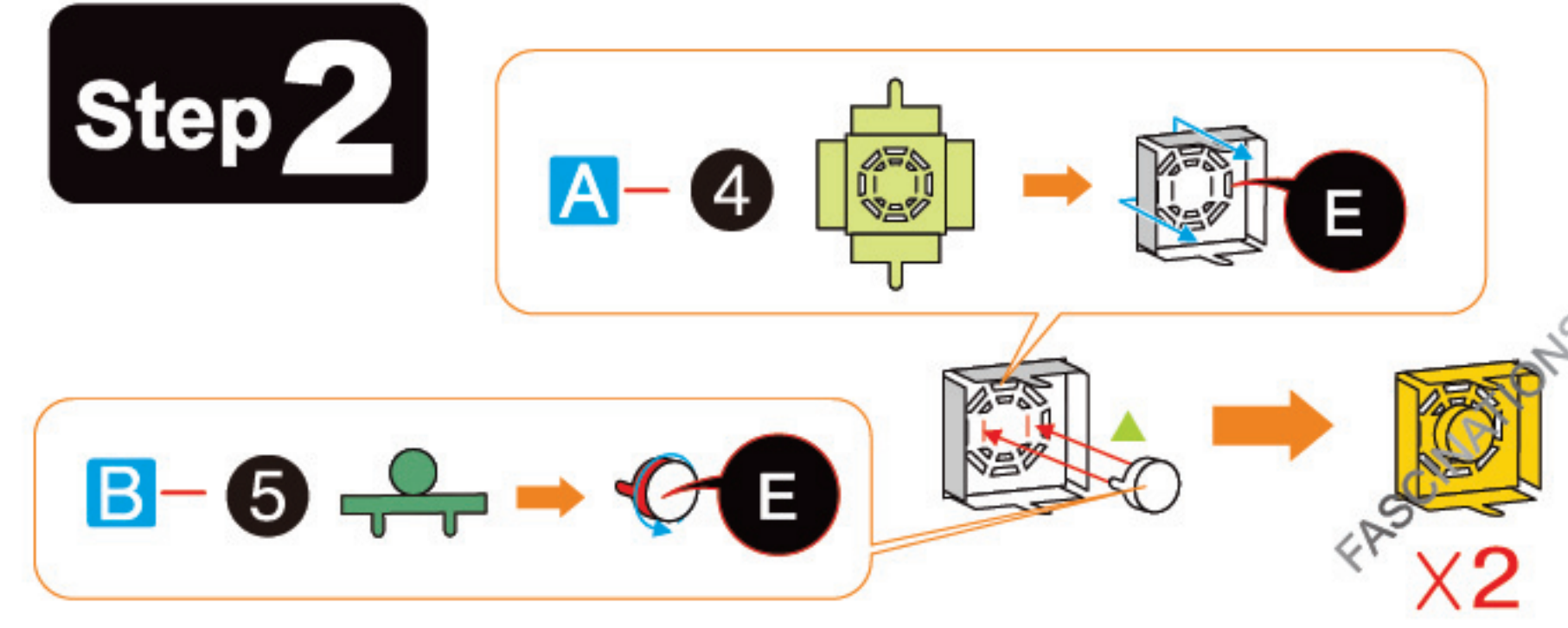
If needed, slightly twist tabs to hold parts together then untwist and bend them down for a nice finish

### ASSEMBLY STEPS

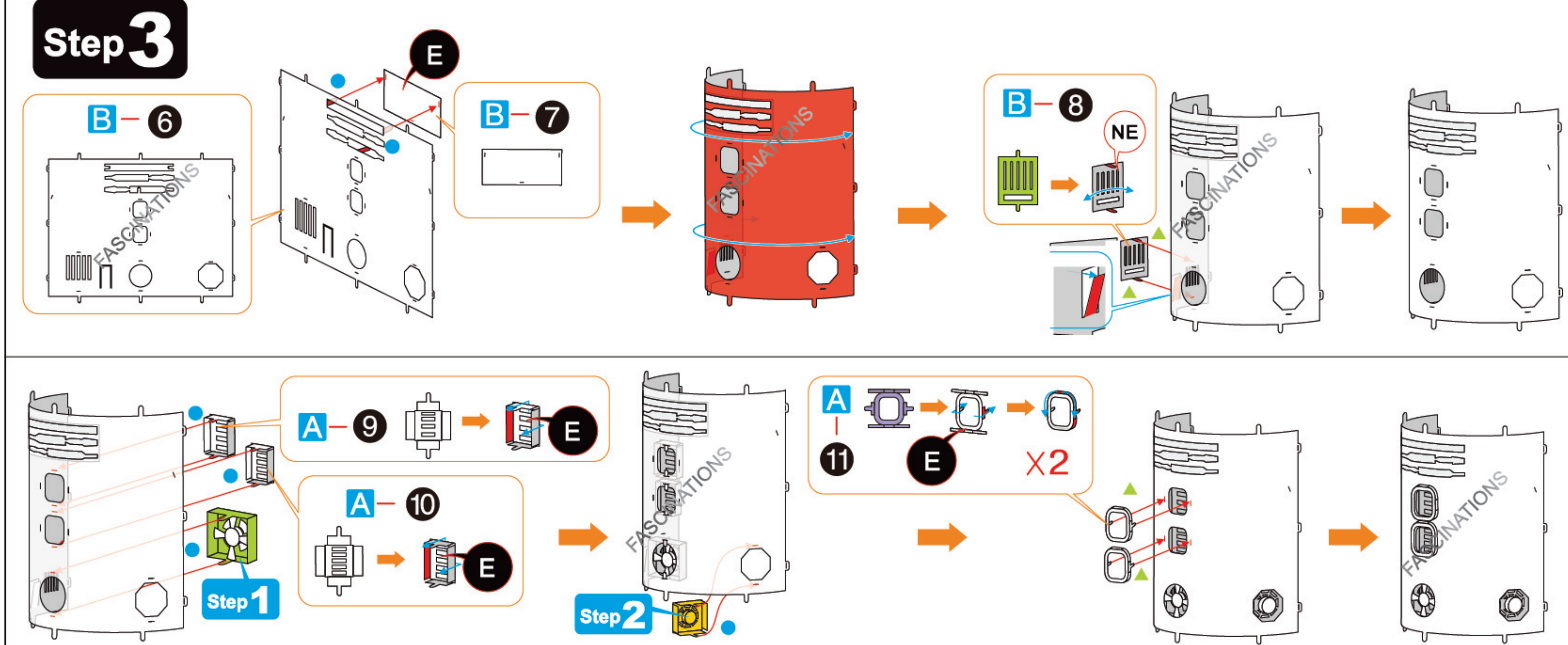
#### Step 1



#### Step 2

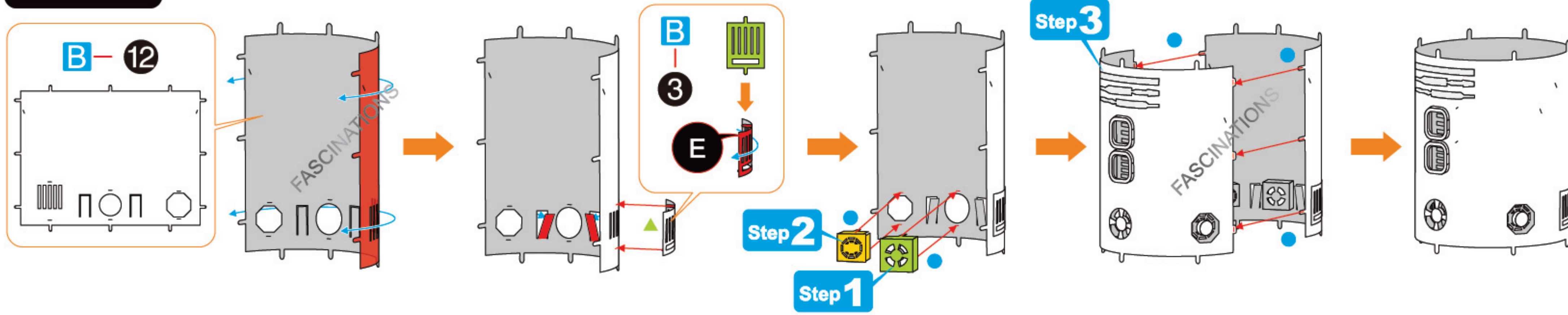


#### Step 3

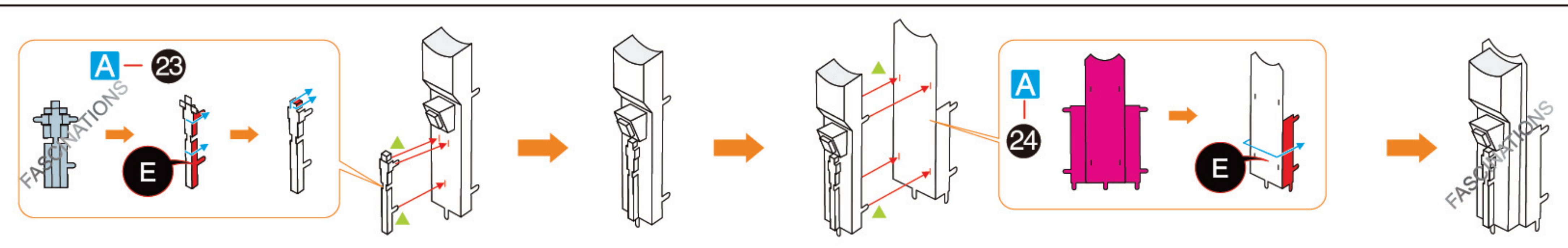
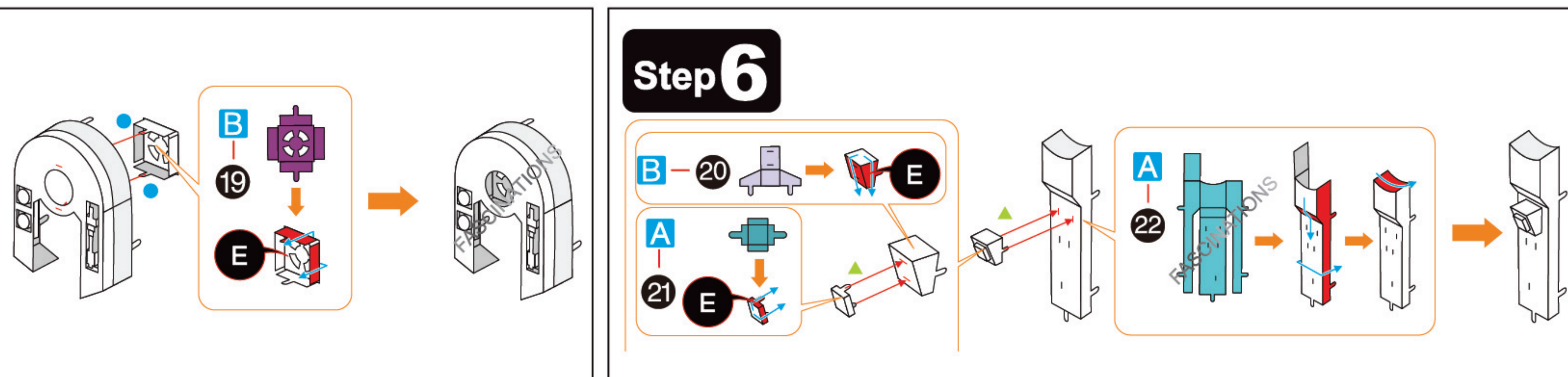
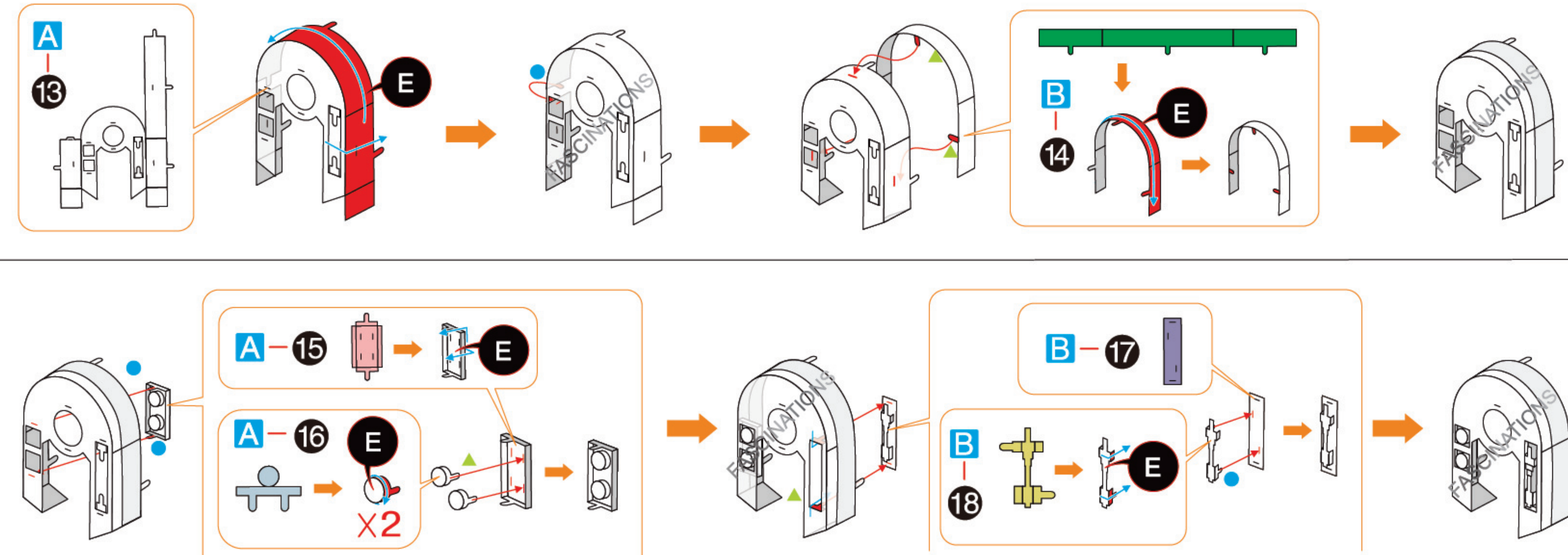




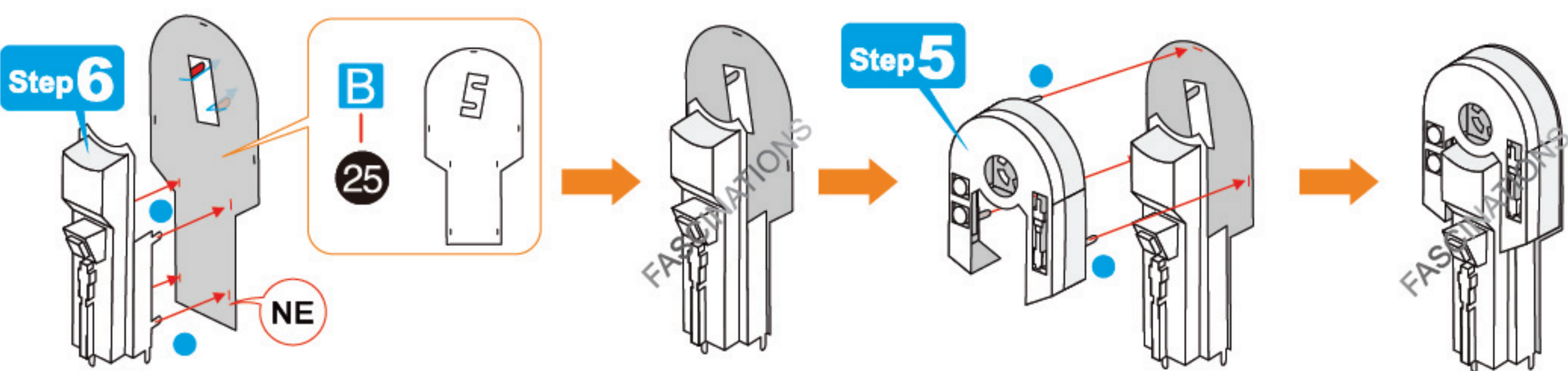
## Step 4



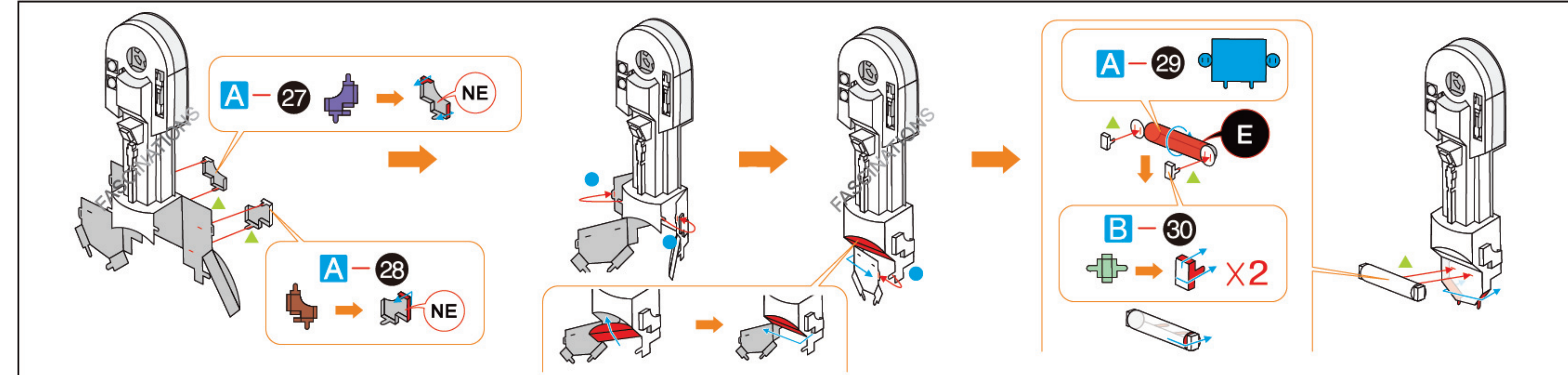
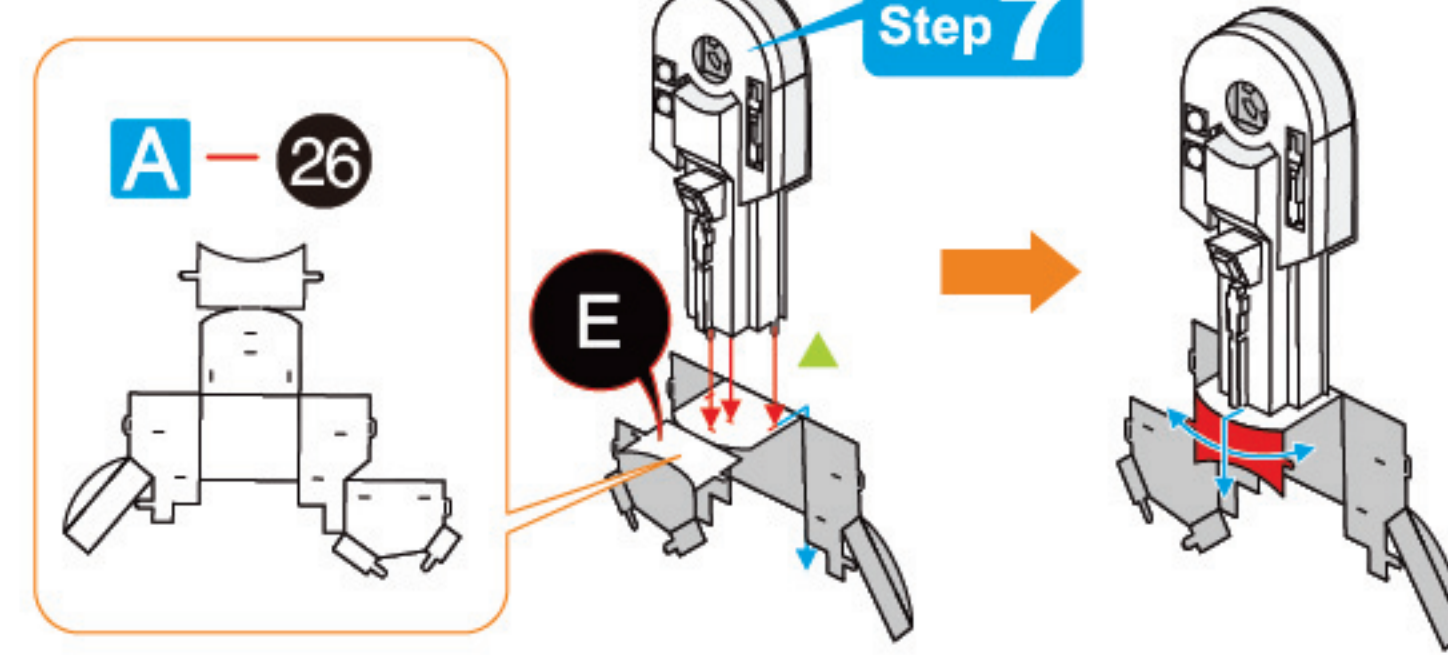
## Step 5



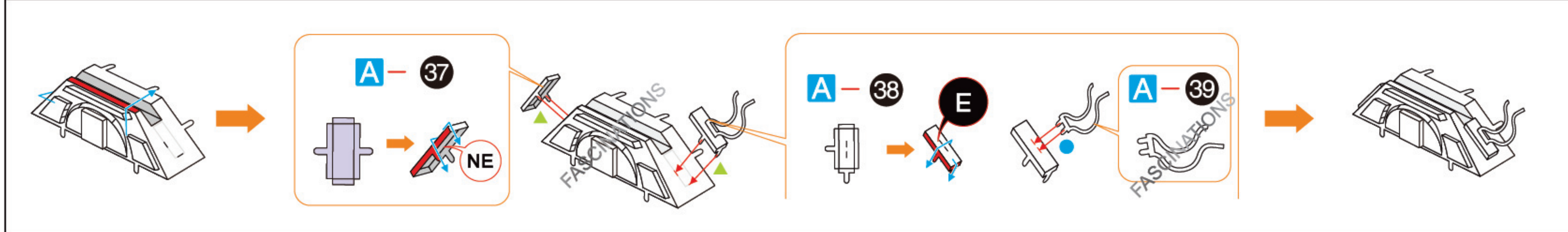
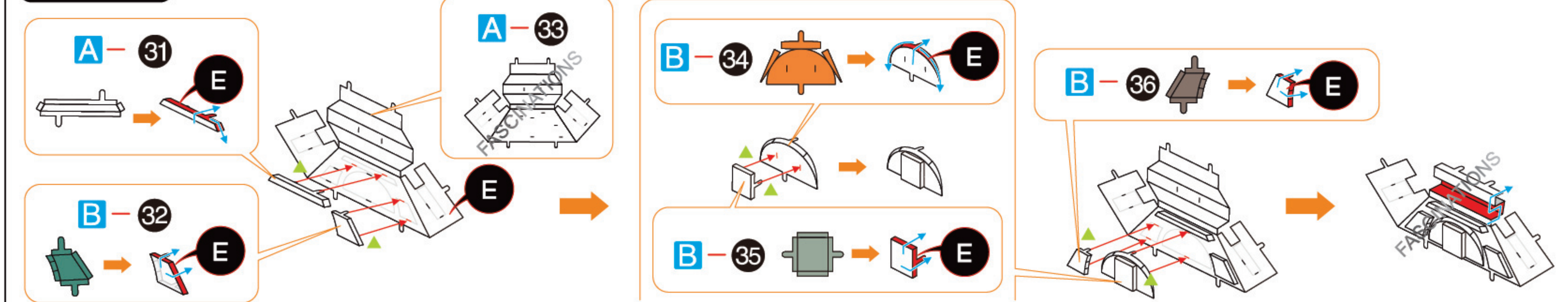
## Step 7



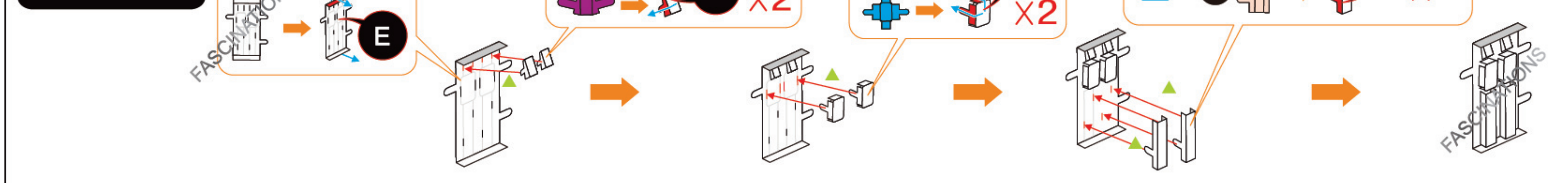
## Step 8



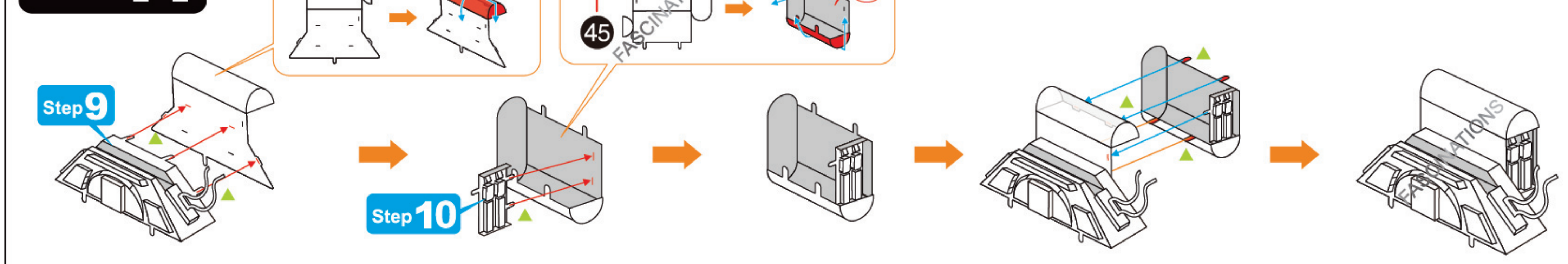
## Step 9



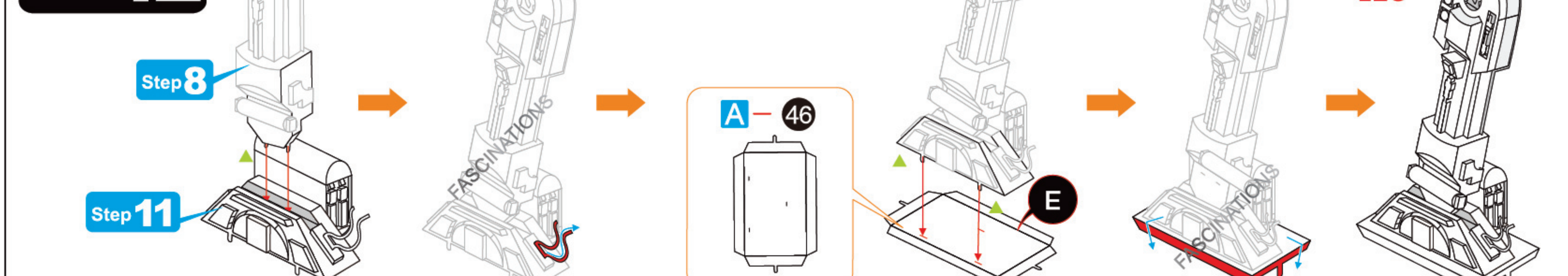
## Step 10



## Step 11

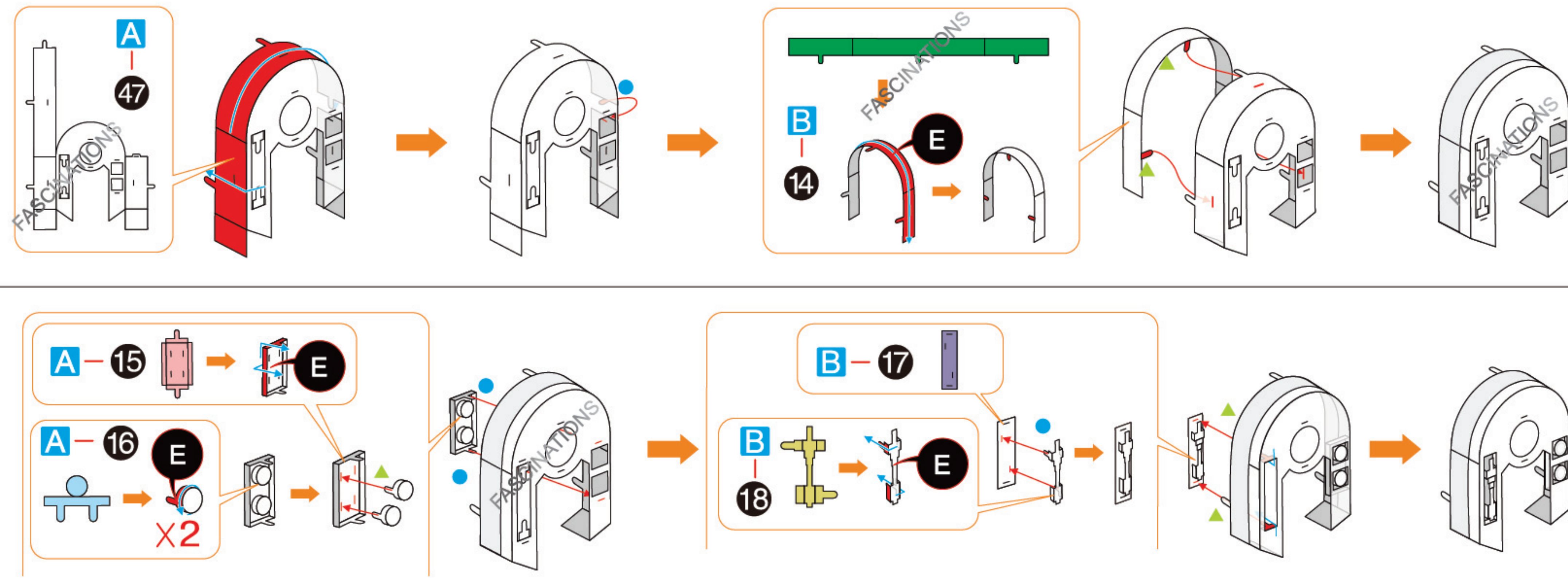


## Step 12

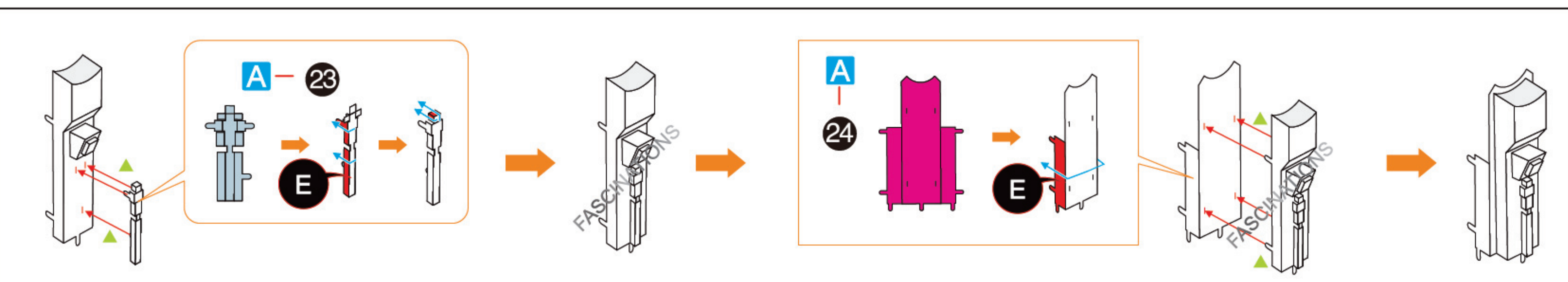
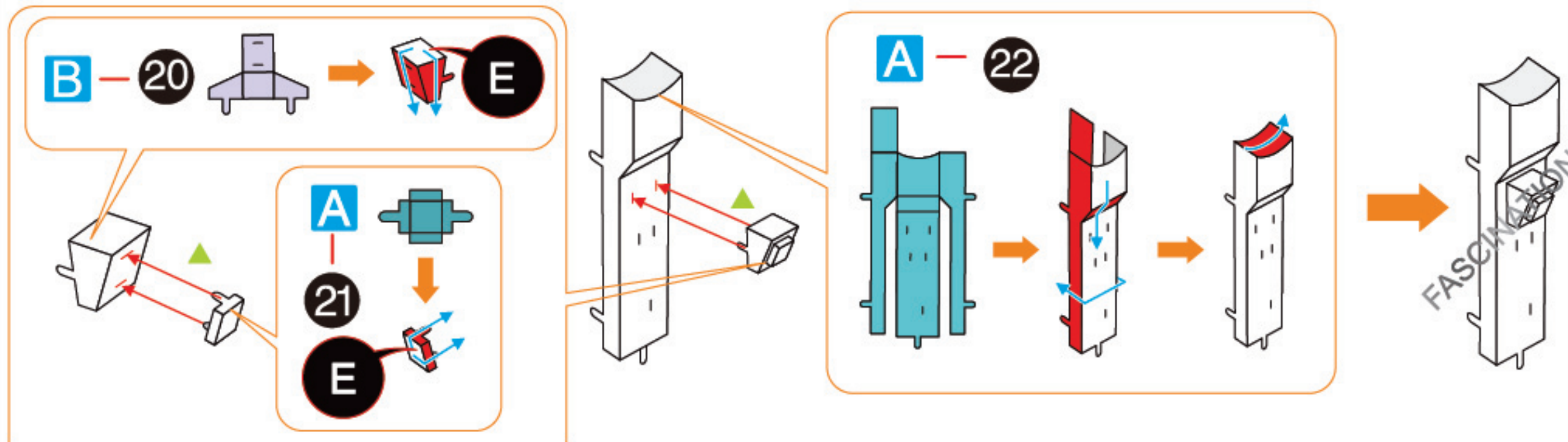




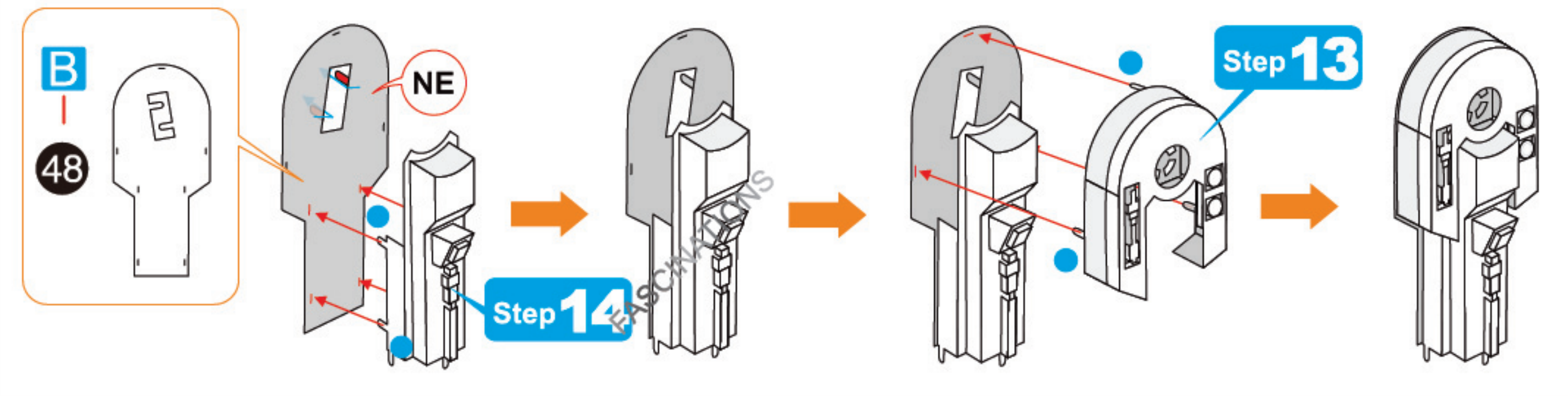
## Step 13



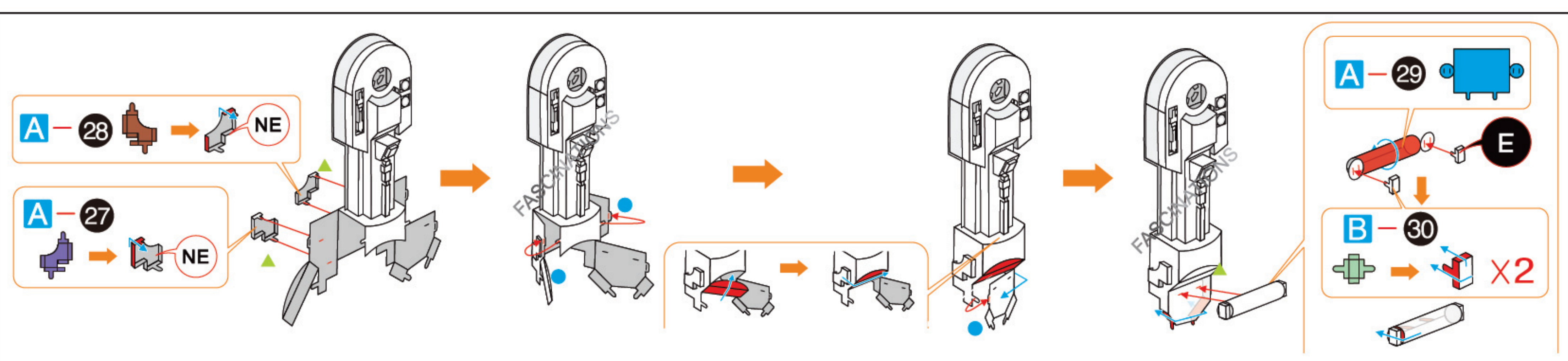
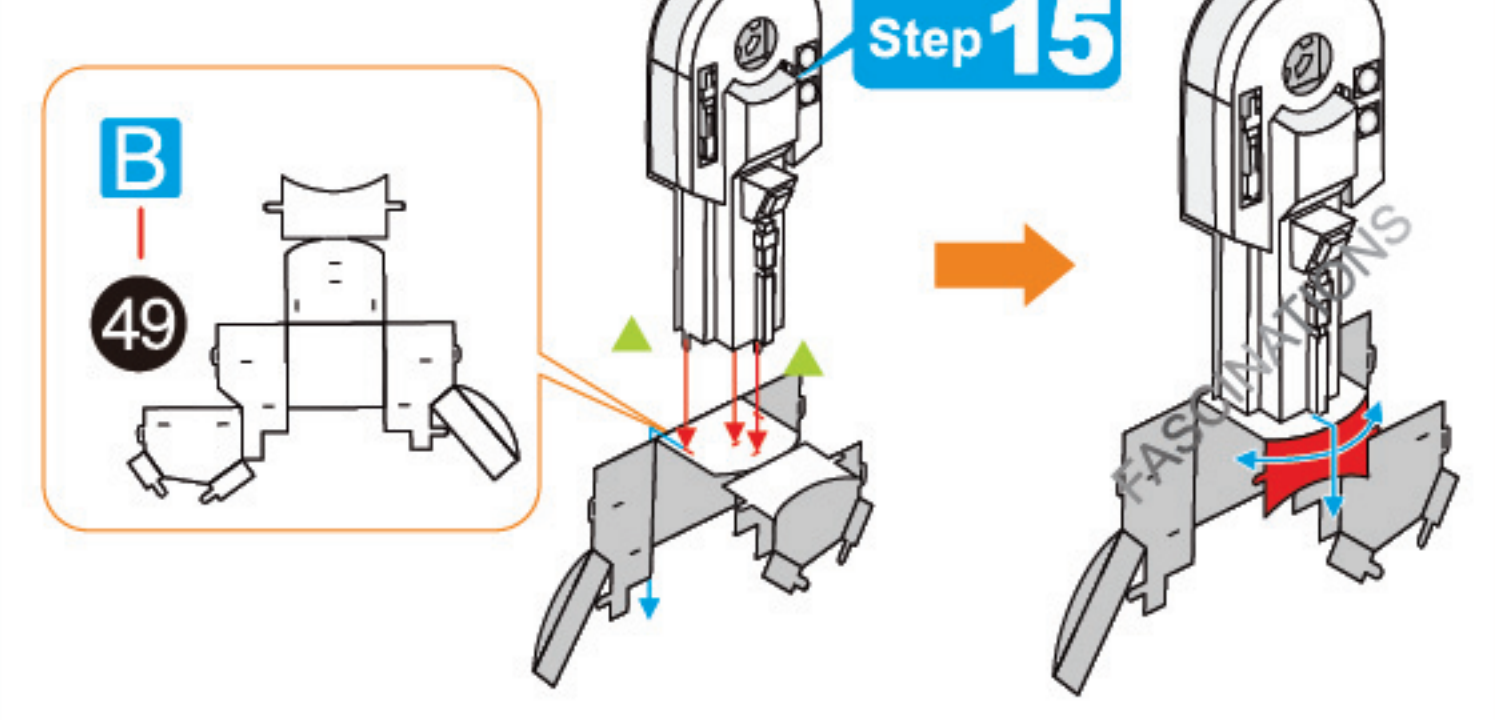
## Step 14



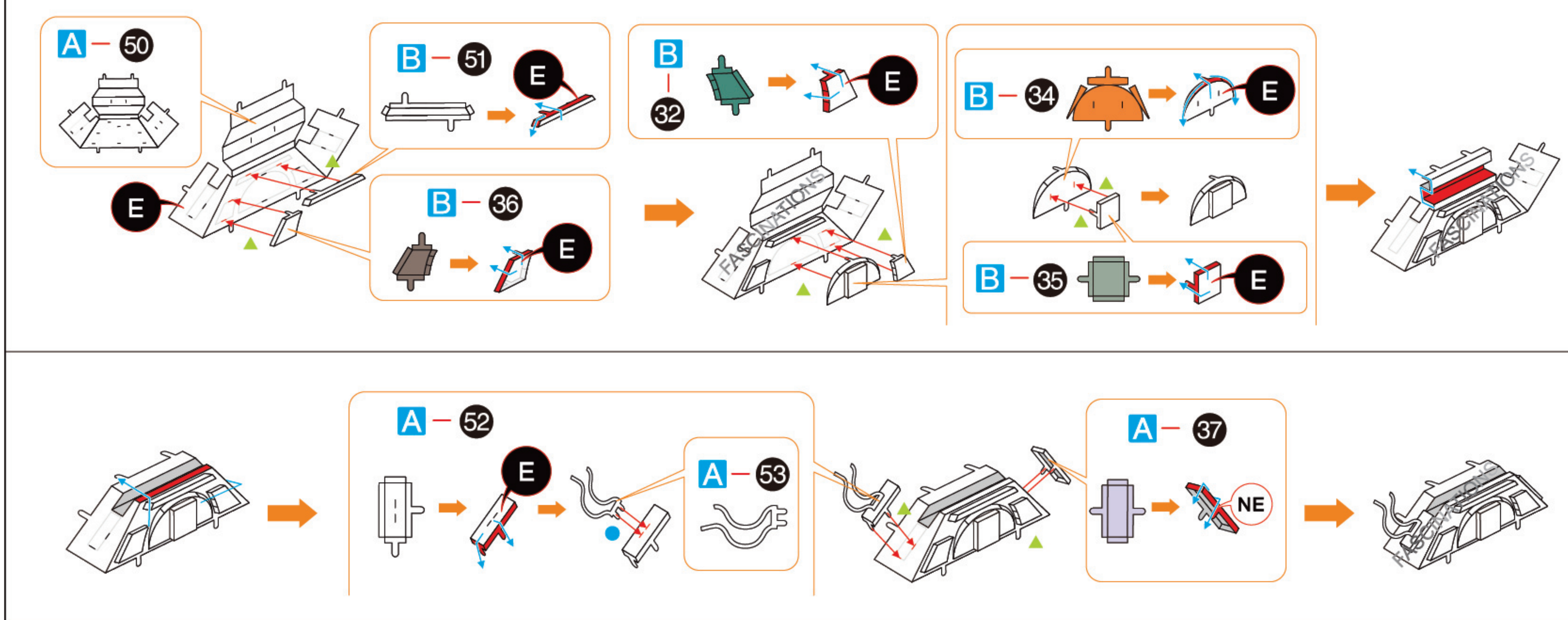
## Step 15



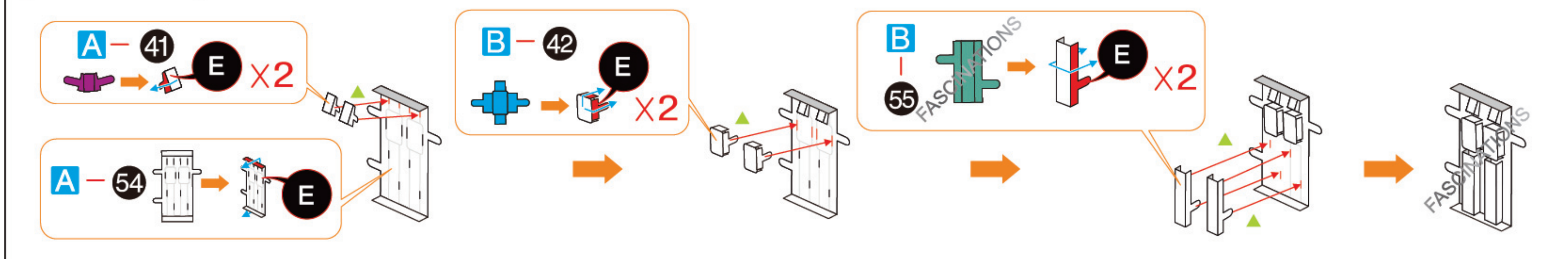
## Step 16



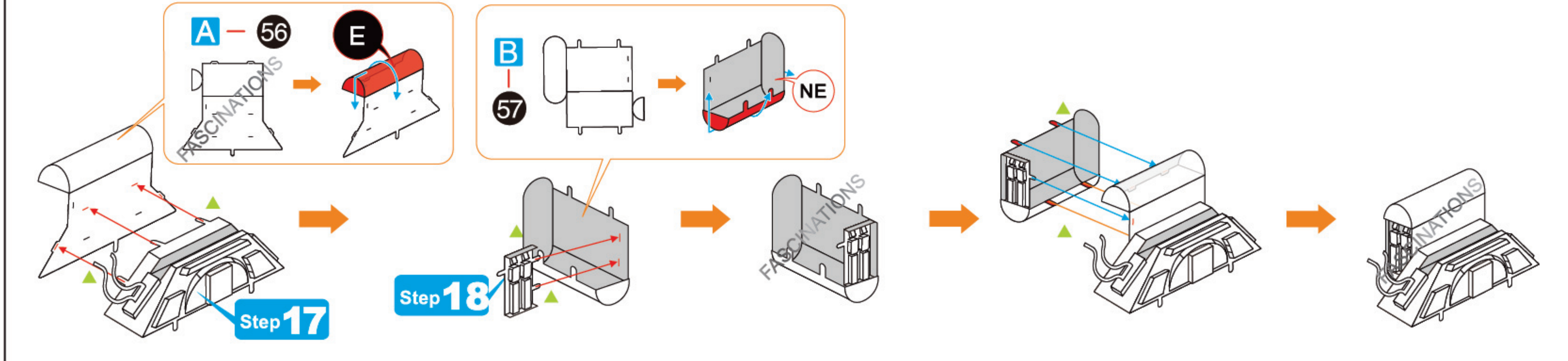
## Step 17



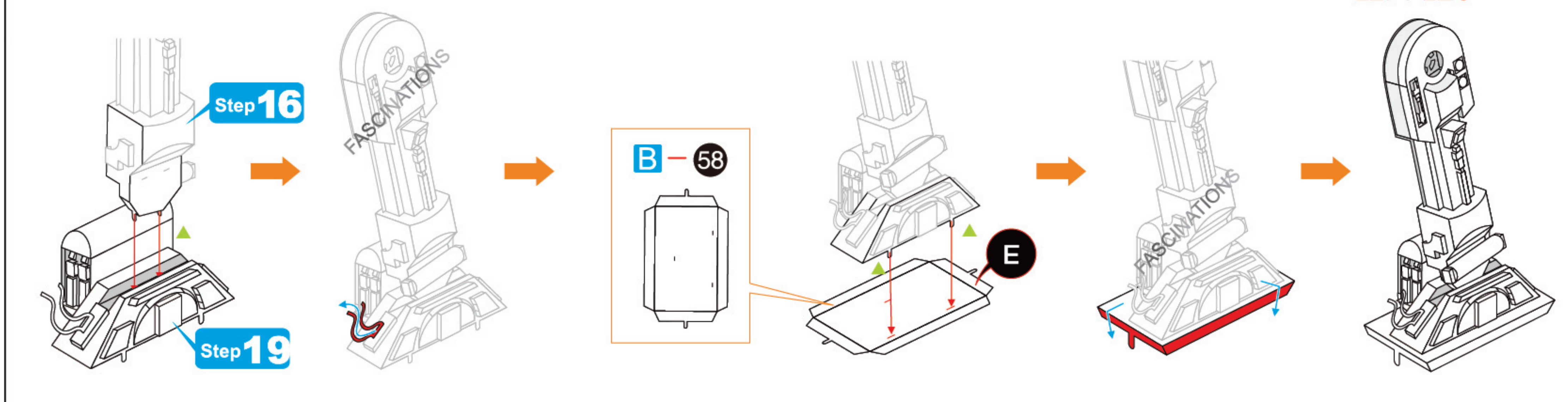
## Step 18



## Step 19

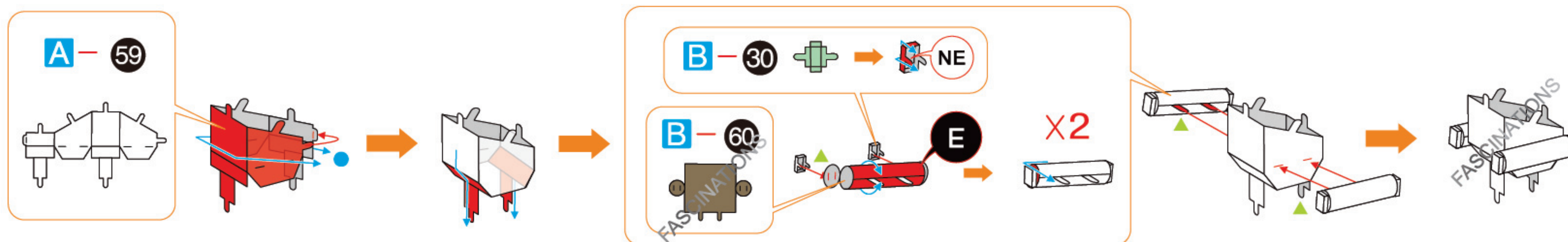


## Step 20

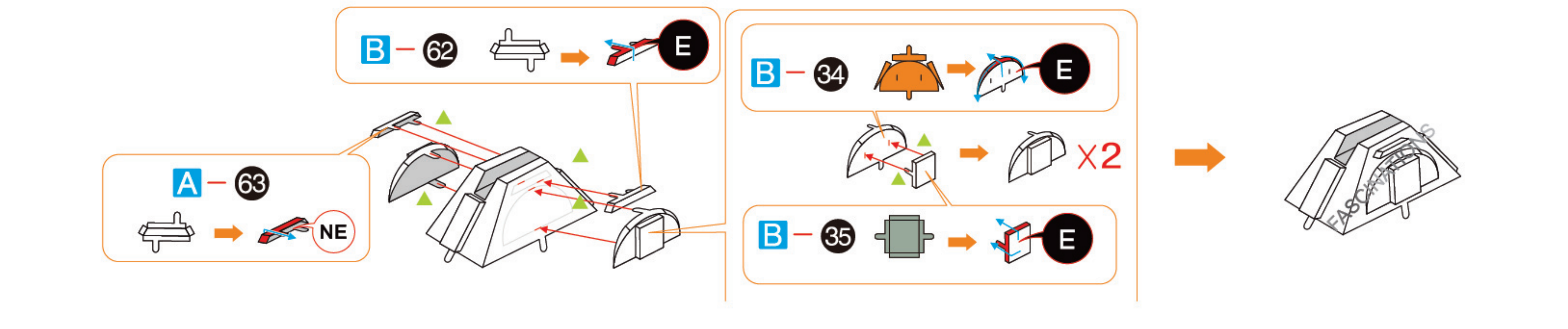
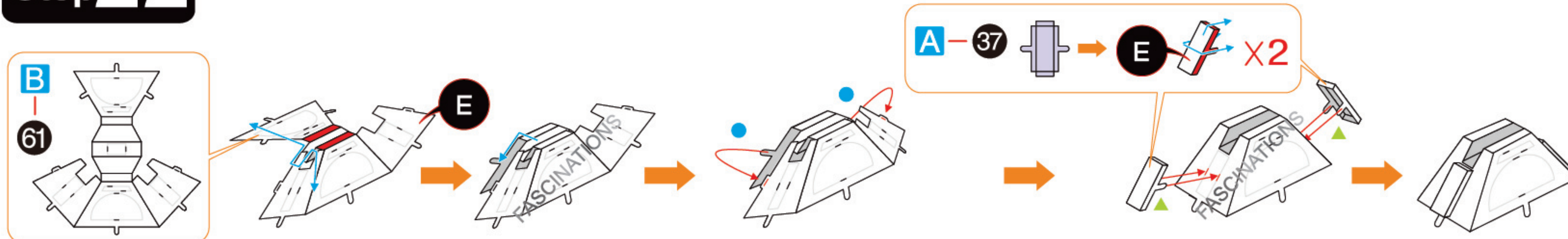




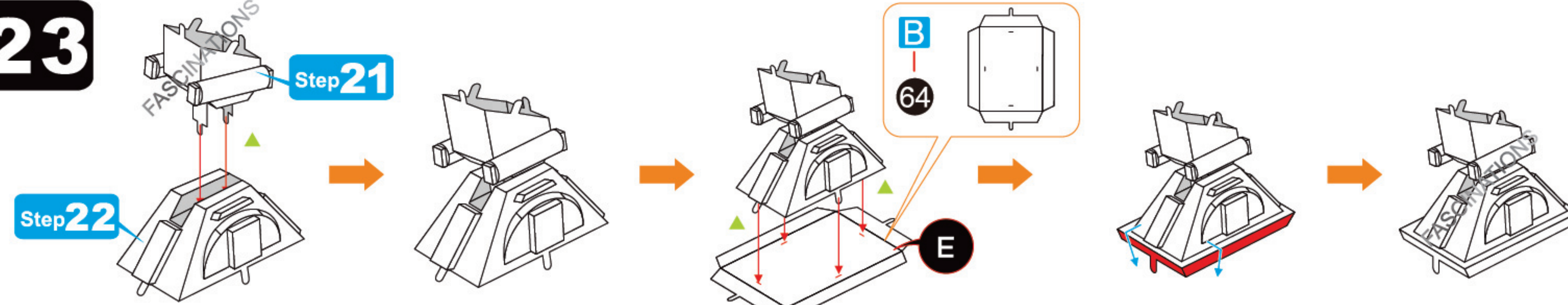
## Step 21



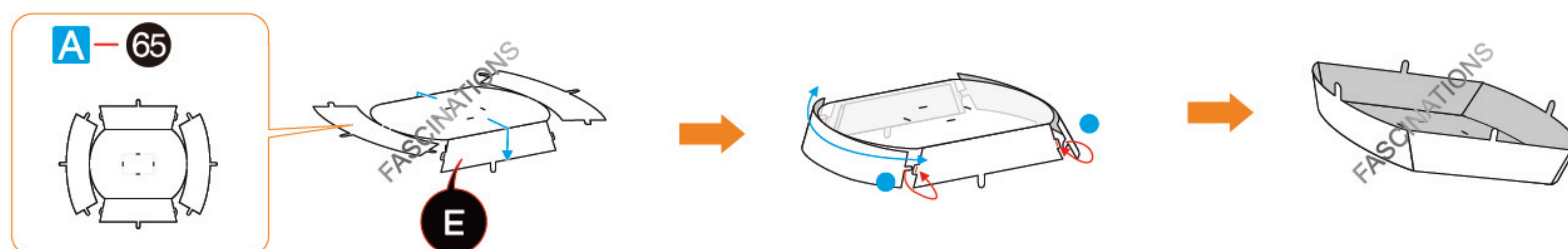
## Step 22



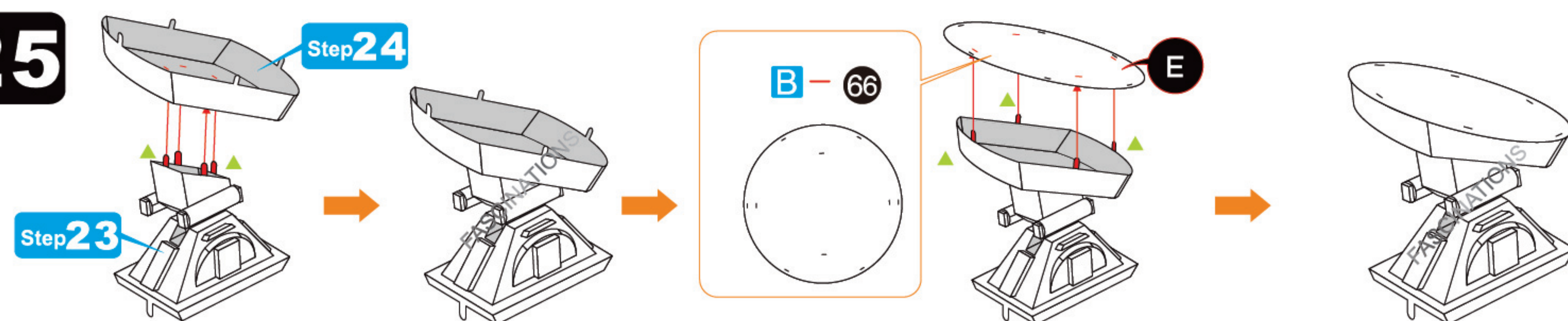
## Step 23



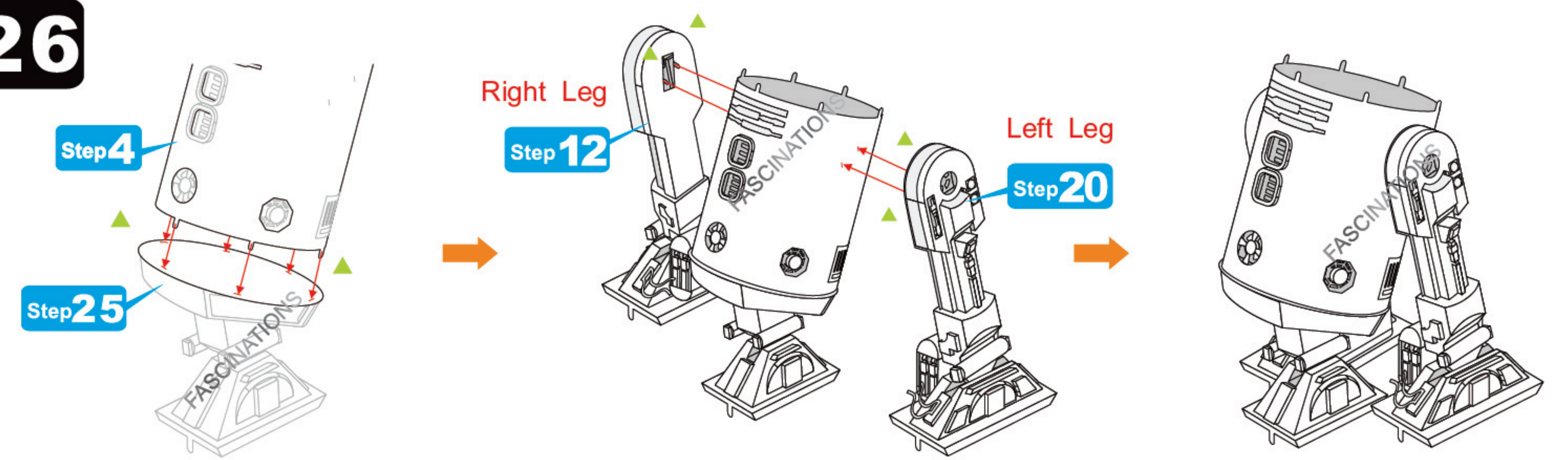
## Step 24



## Step 25

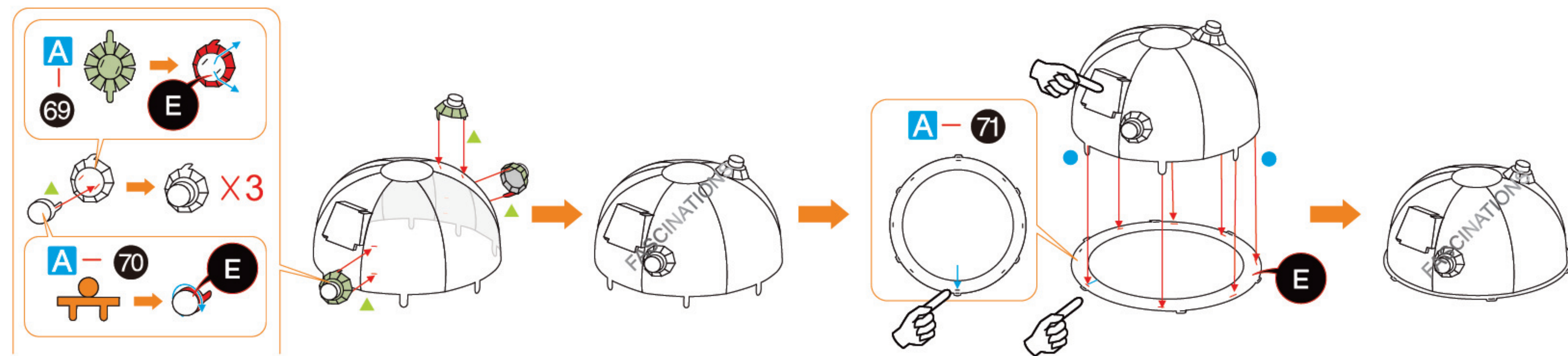
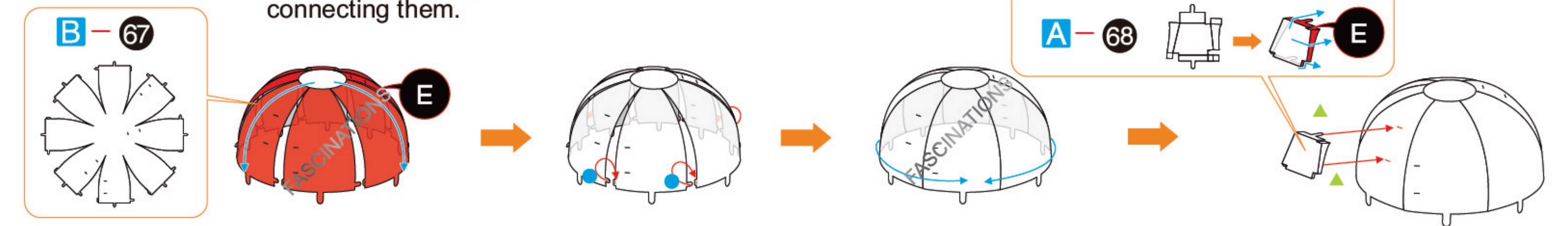


## Step 26



## Step 27

Fold tabs down 90 degrees and holes down 45 degrees before connecting them.



## Step 28

