

STAR WARS

www.starwars.com

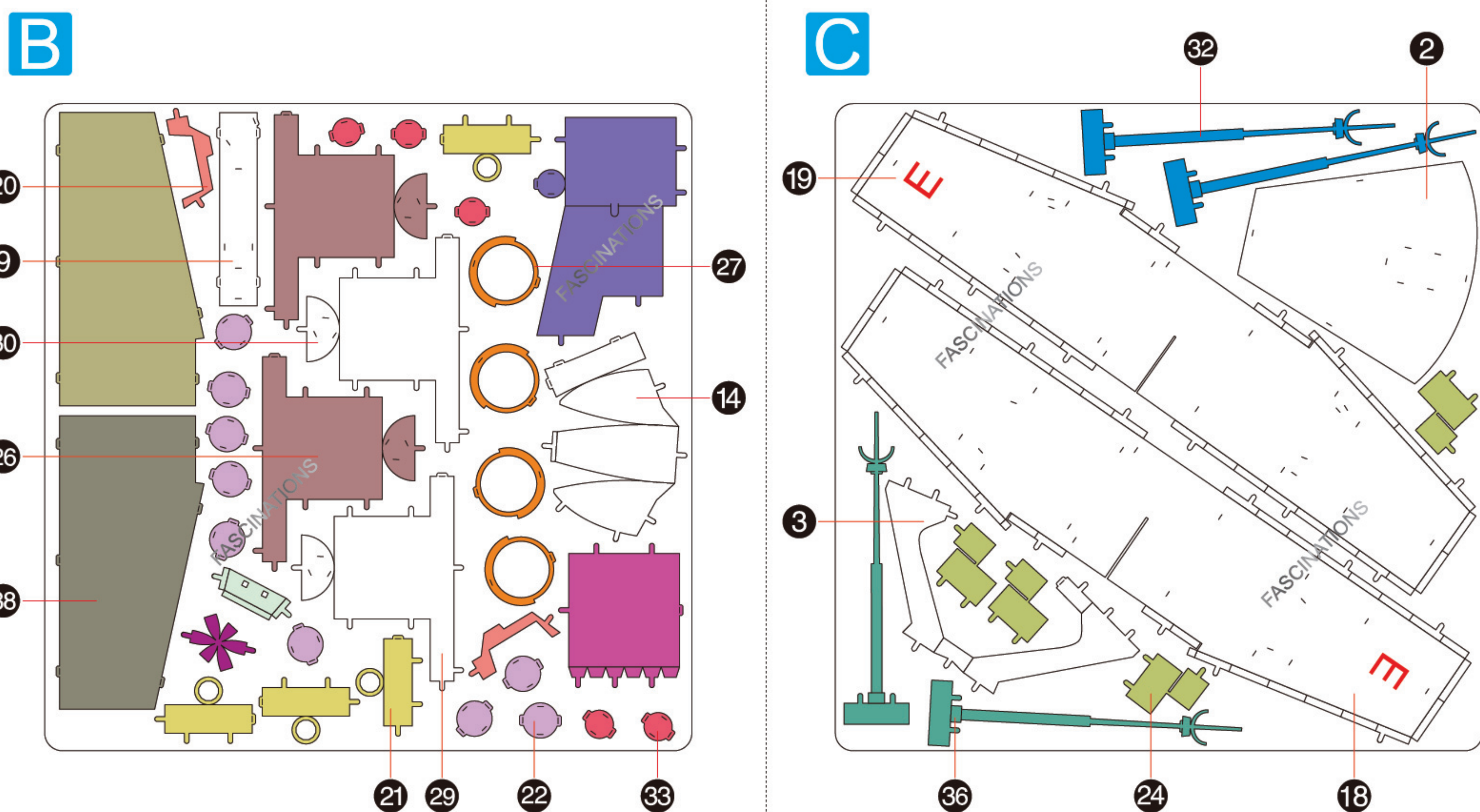
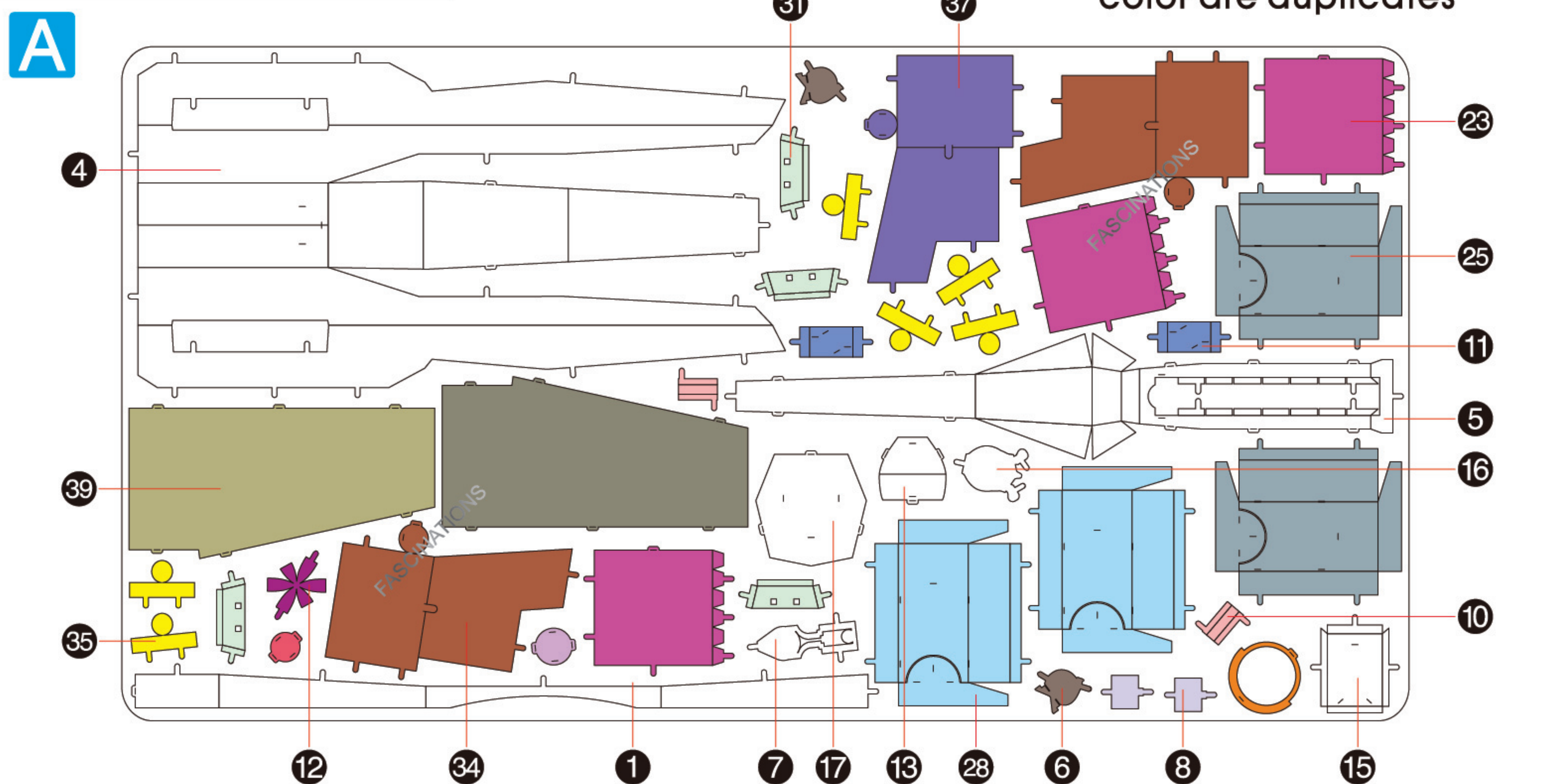
© & ™ Lucasfilm Ltd

X-wing Starfighter™

Metal Earth

ICONX

METAL SHEET

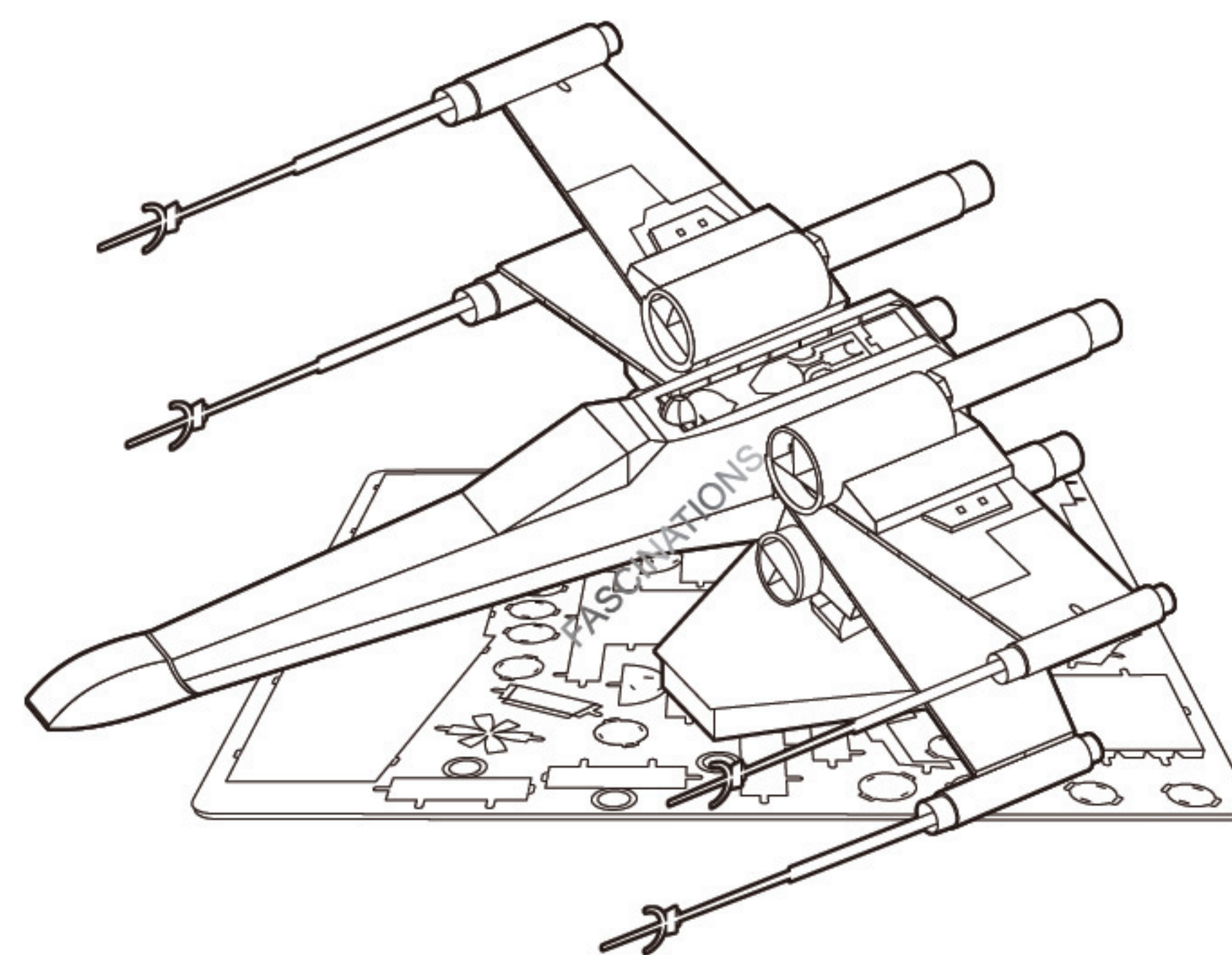


In order to avoid possible injury from sharp edges, please carefully discard the metal sheets after parts have been removed



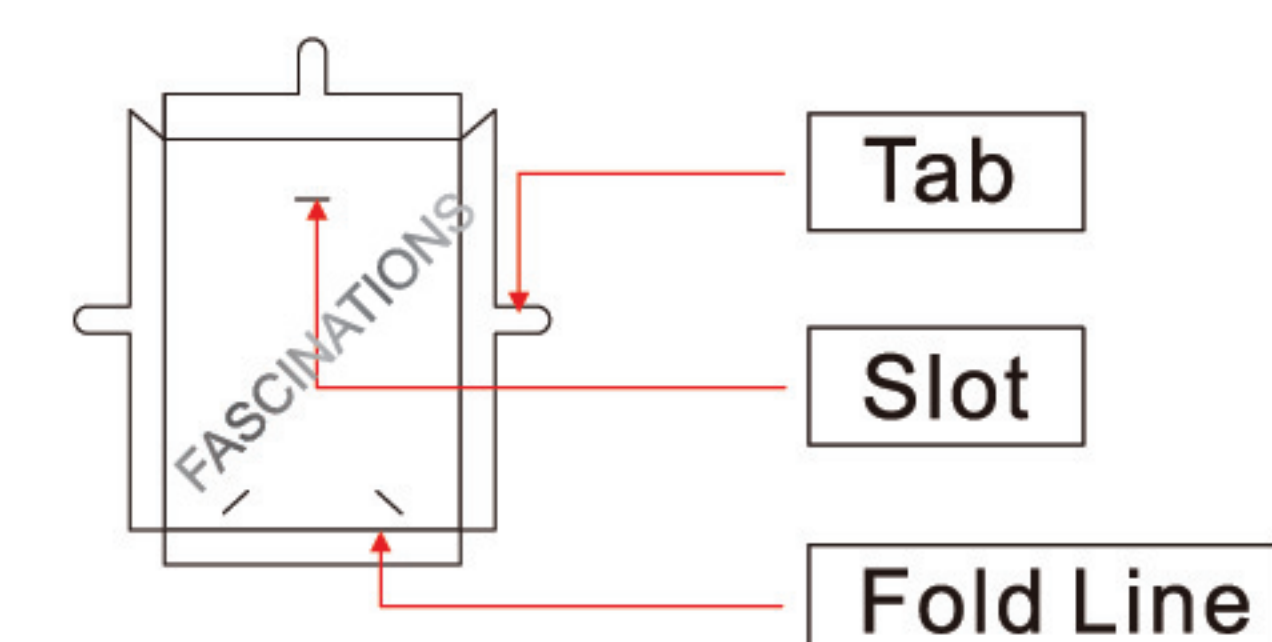
Go to www.metal-earth.com/360/icx132 to see the zoomable PDF version of this instruction sheet

ICX 132



It is highly recommended that you visit www.metal-earth.com/360/icx132 to see the completed model before assembling your own

TO CREATE THE BEST CONNECTIONS

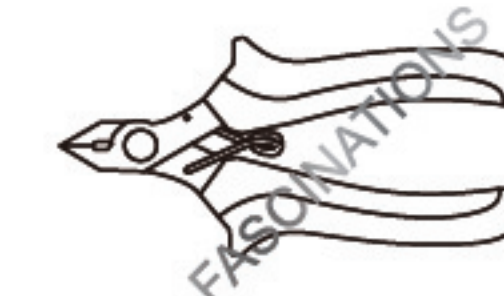


Legends:

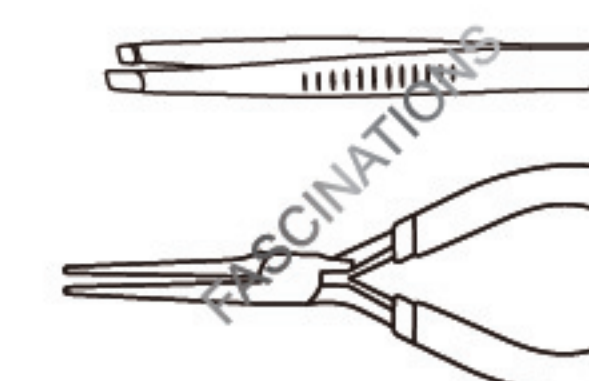
- E** Engraved/Color side
- NE** Non-engraved/Silver side
- Attention point
- Insert tab and bend 90 degrees
- Insert tab and twist 90 degrees

Recommended tools:

-Wire cutters: helpful for taking parts from the metal sheets.



-Tweezers or needle nose pliers: helpful for folding parts, bending and twisting tabs.

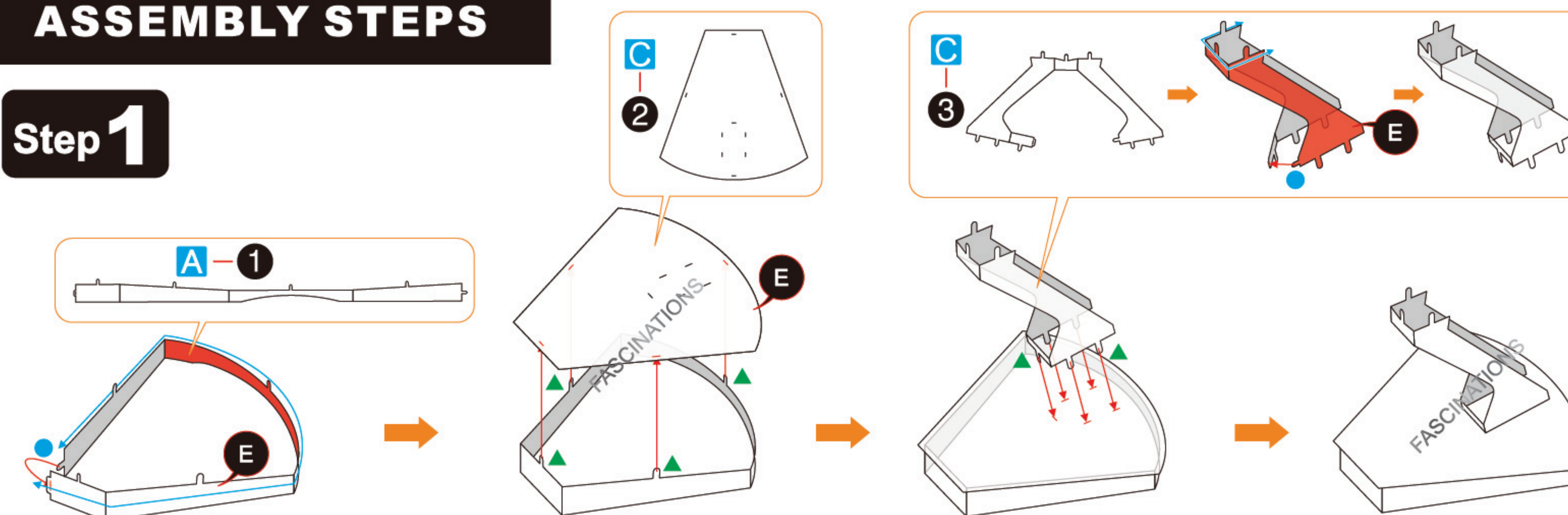


Assembly tip:

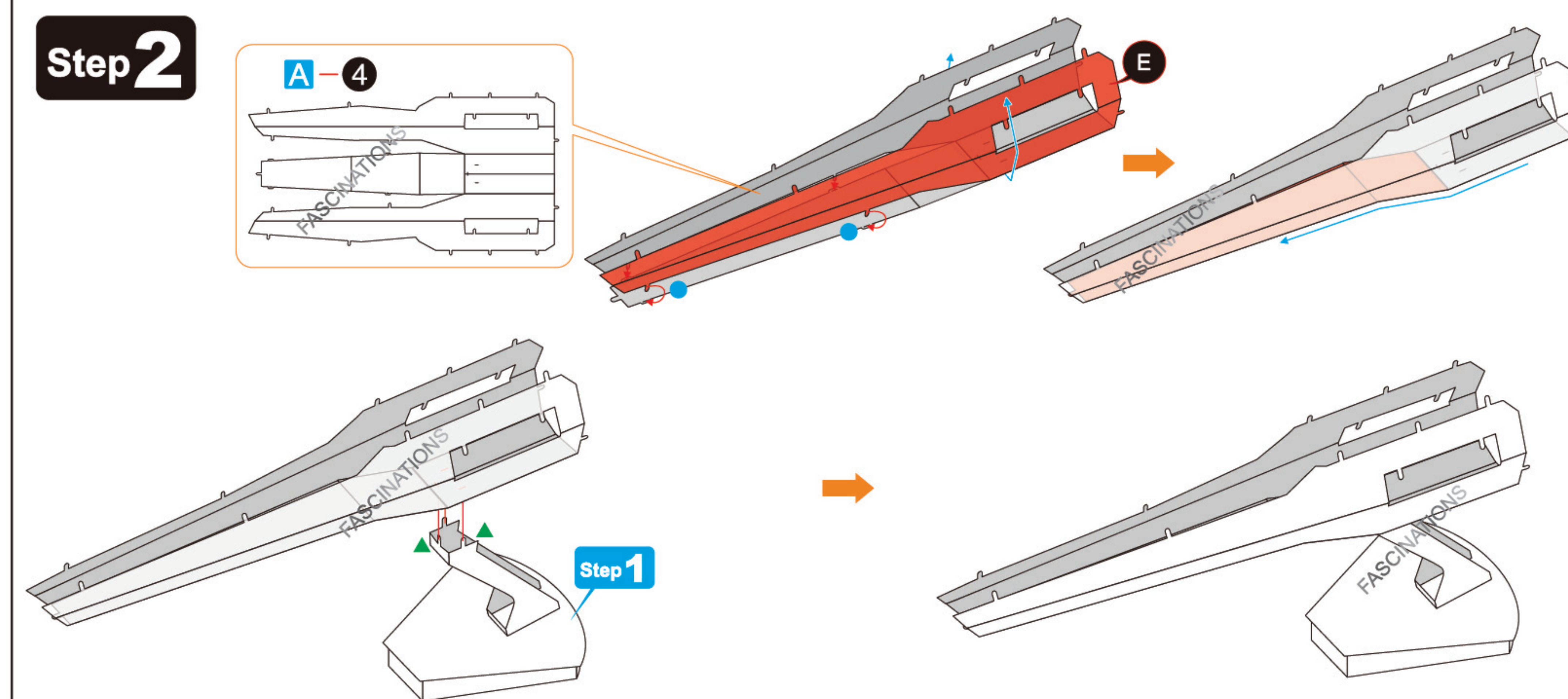
If needed, slightly twist tabs to hold parts together then untwist and bend them down for a nice finish

ASSEMBLY STEPS

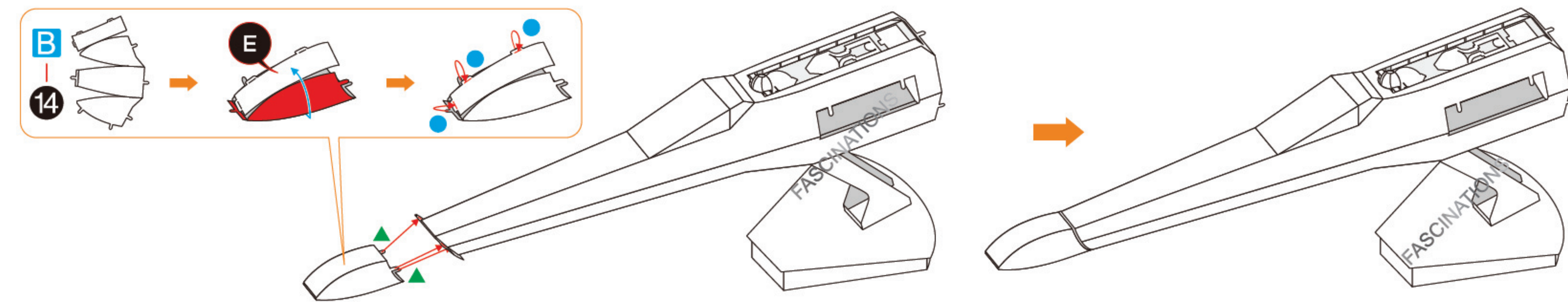
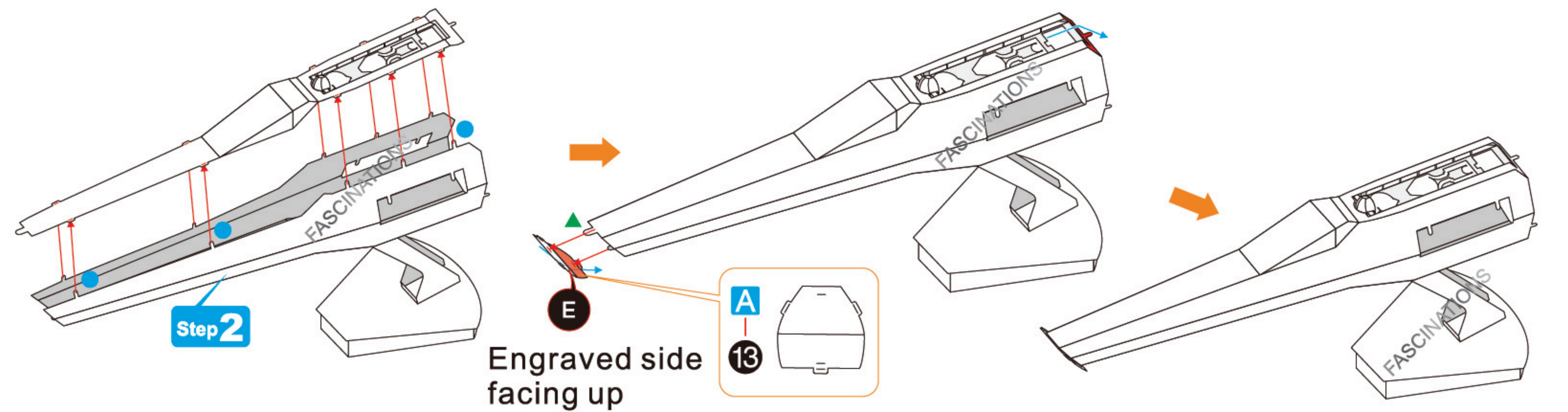
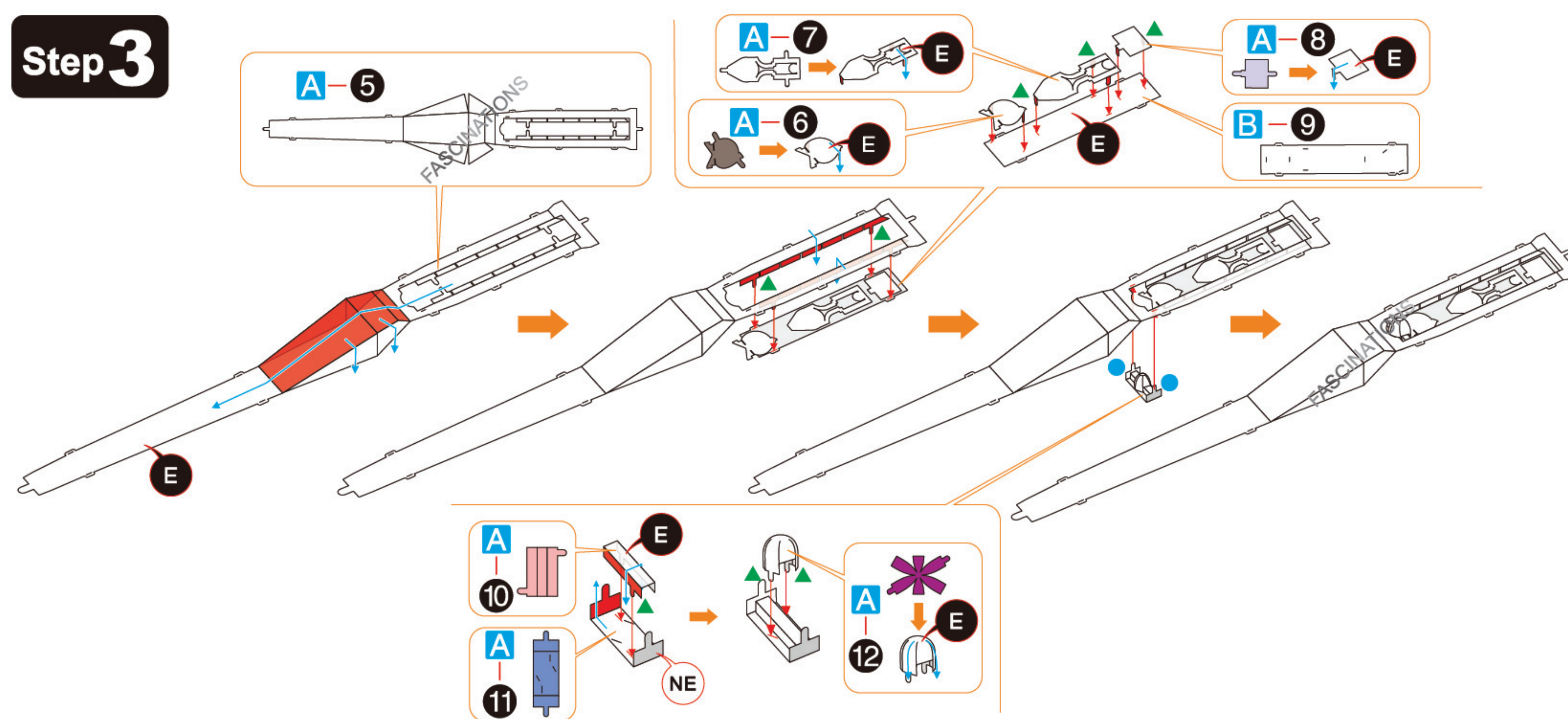
Step 1



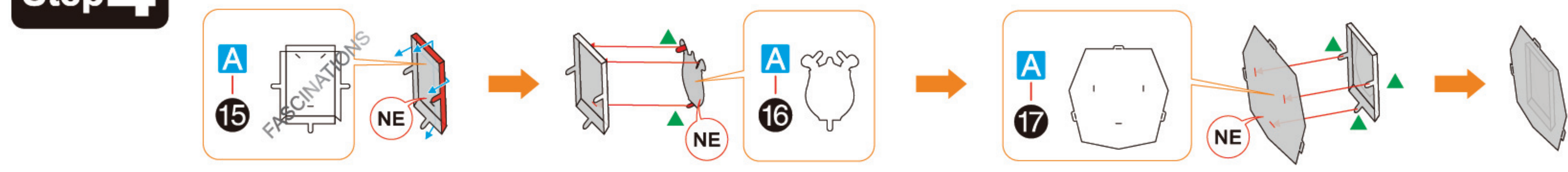
Step 2



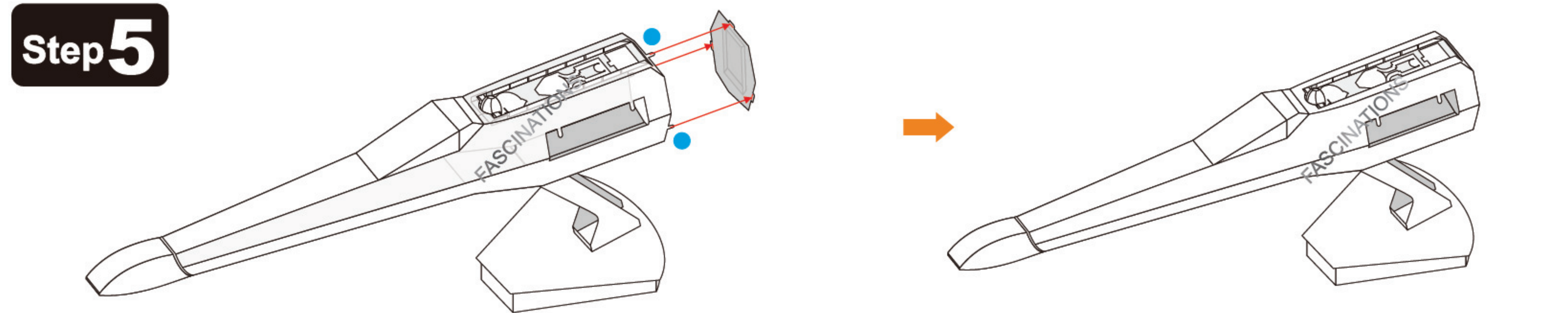
Step 3



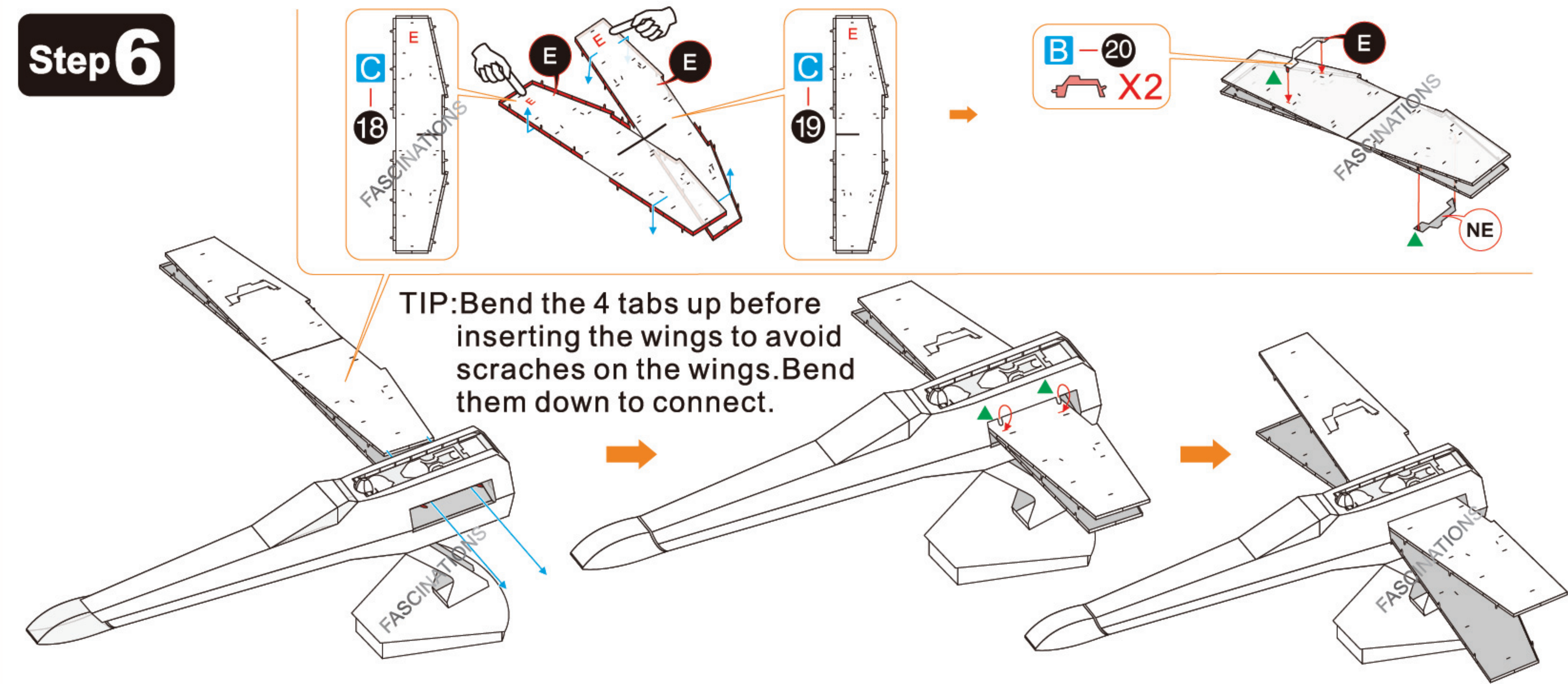
Step 4



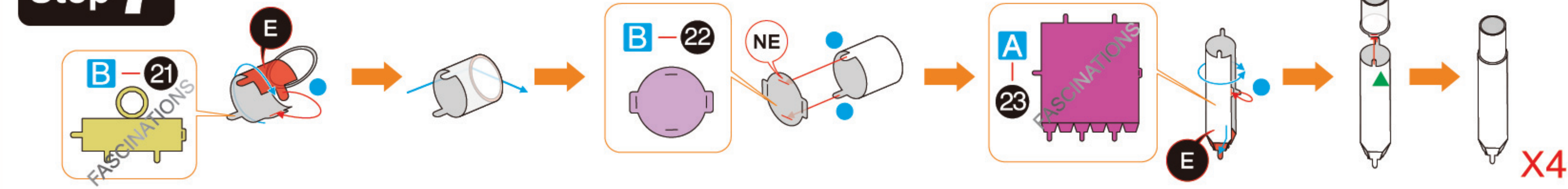
Step 5



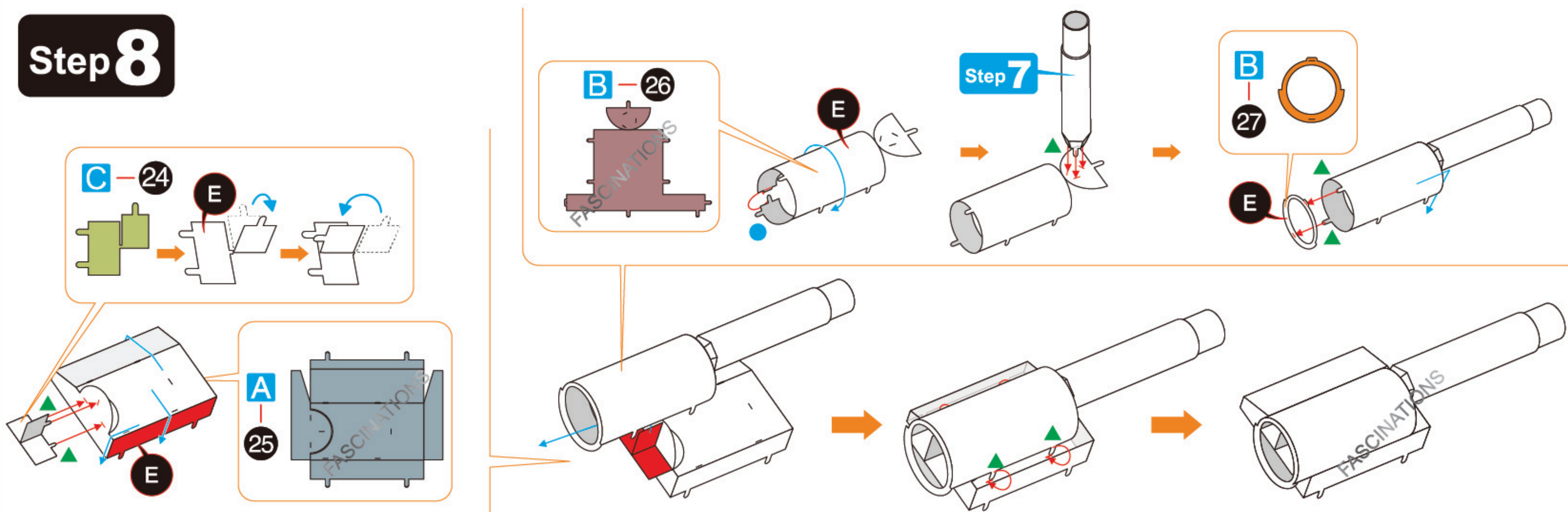
Step 6



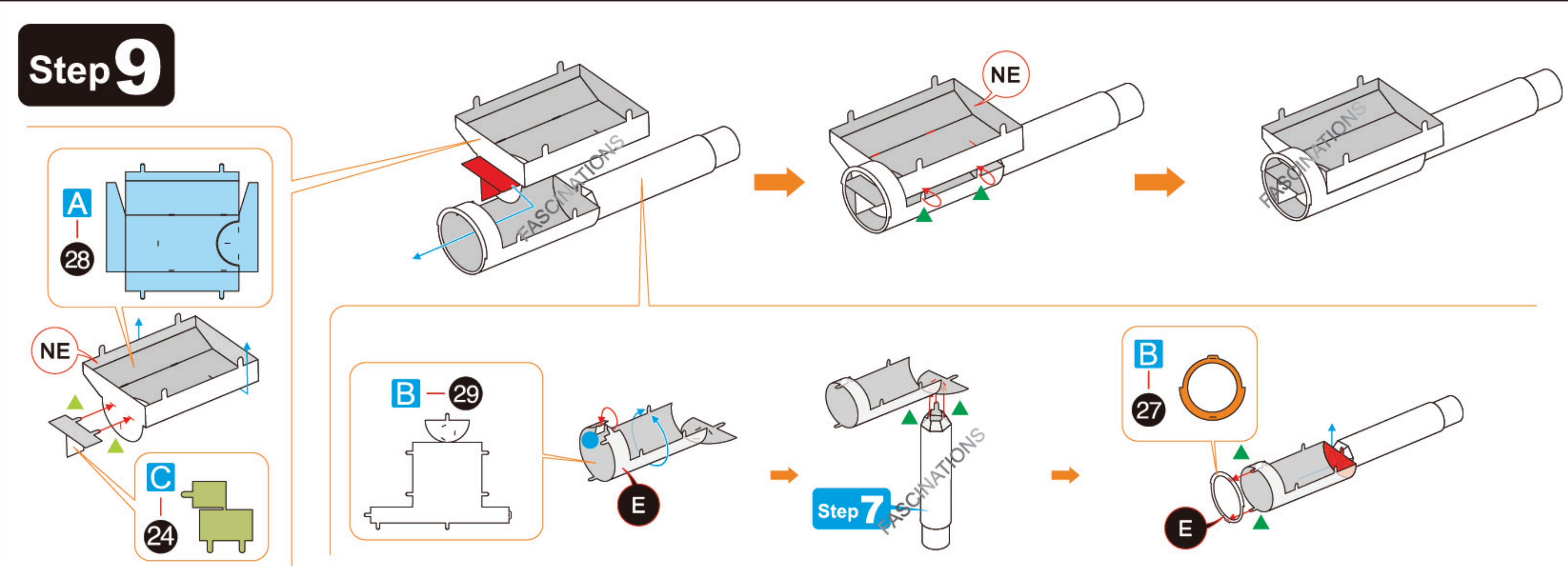
Step 7



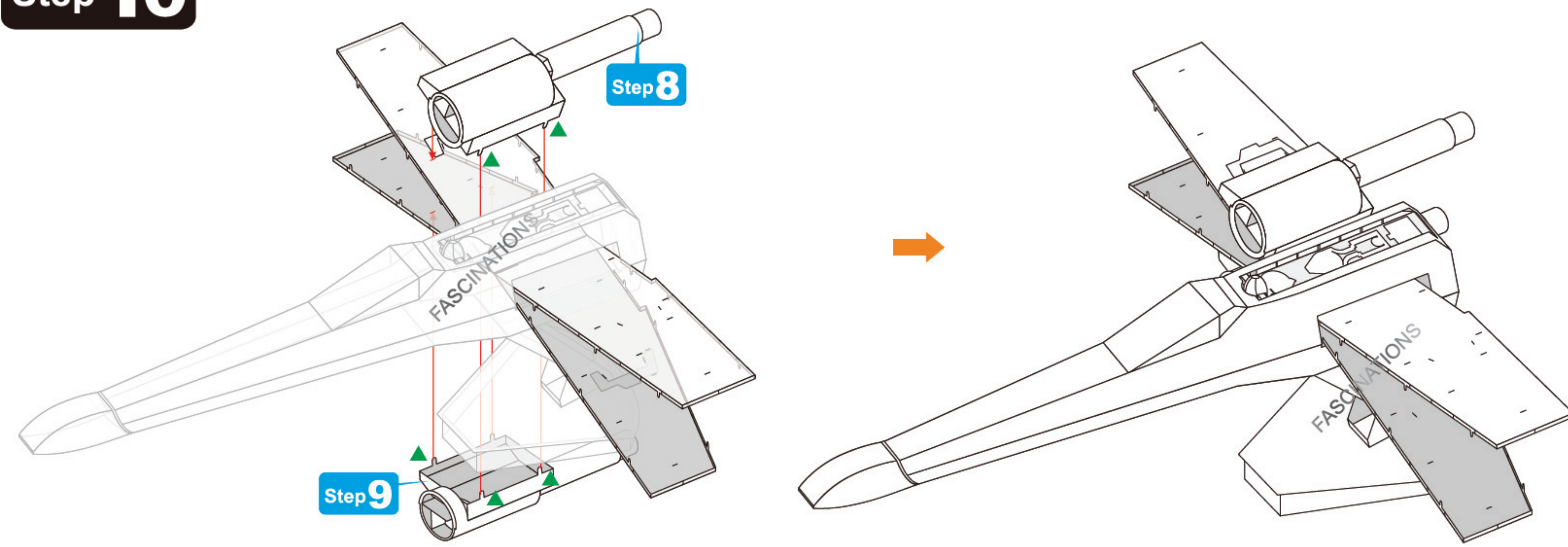
Step 8



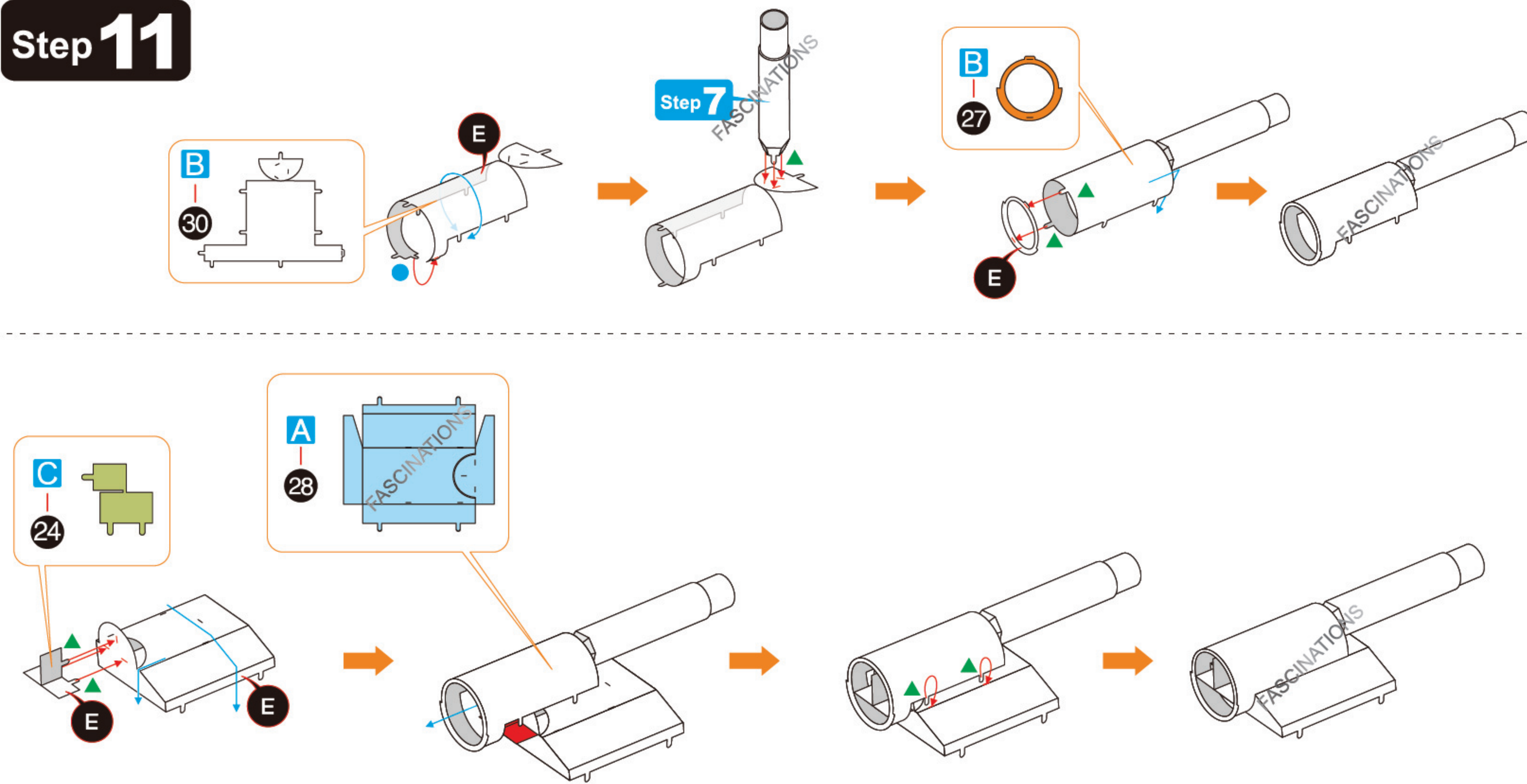
Step 9



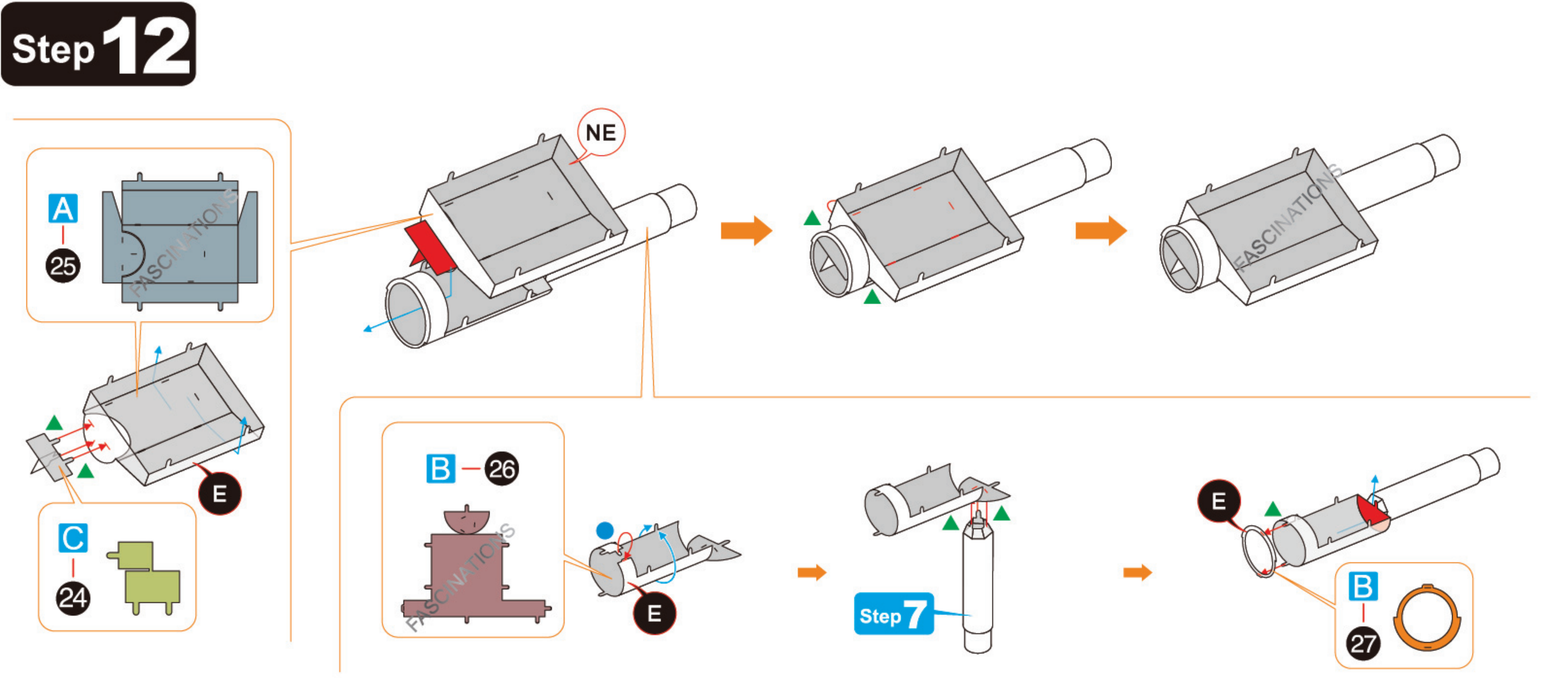
Step 10



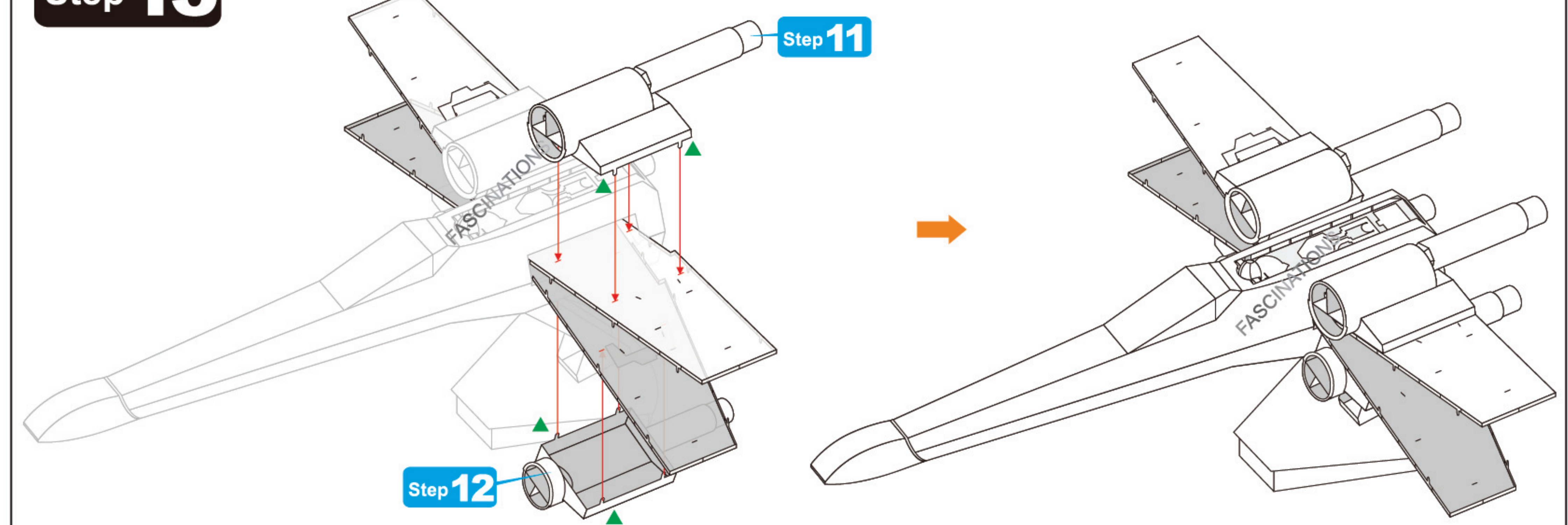
Step 11



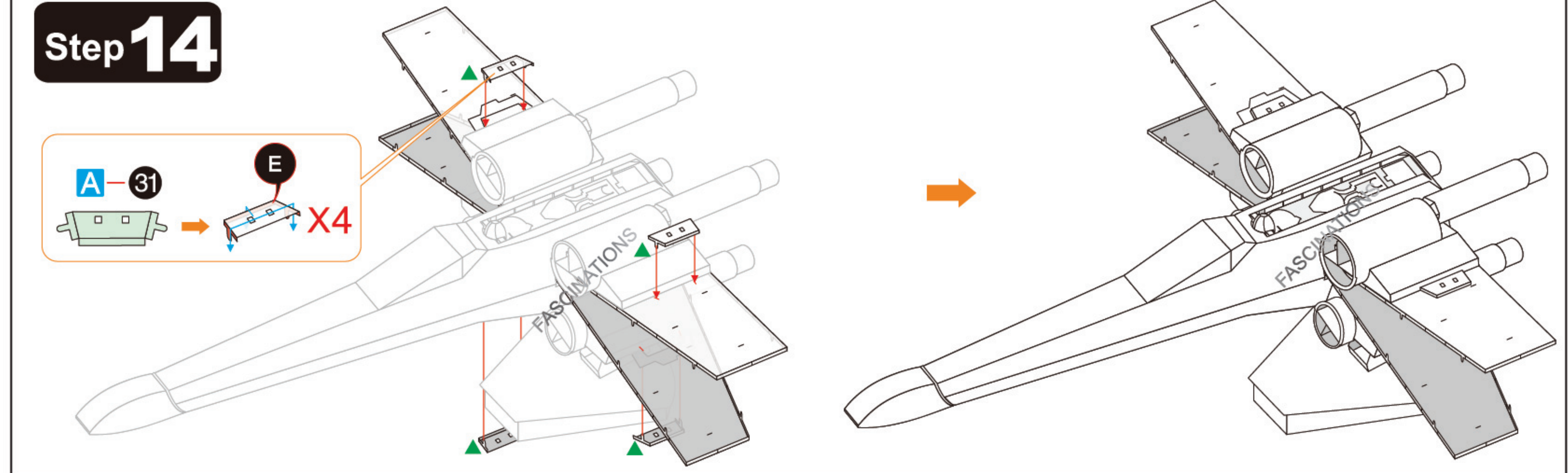
Step 12



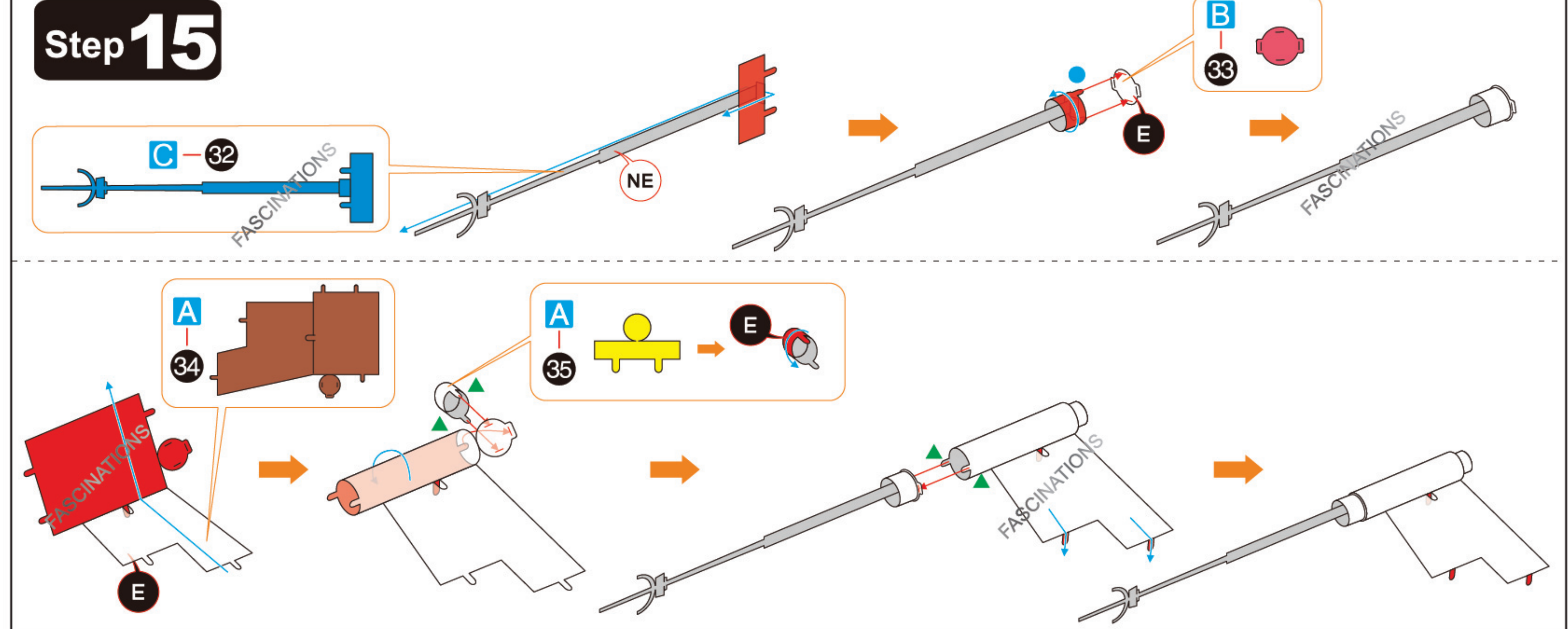
Step 13



Step 14



Step 15



Step 16

