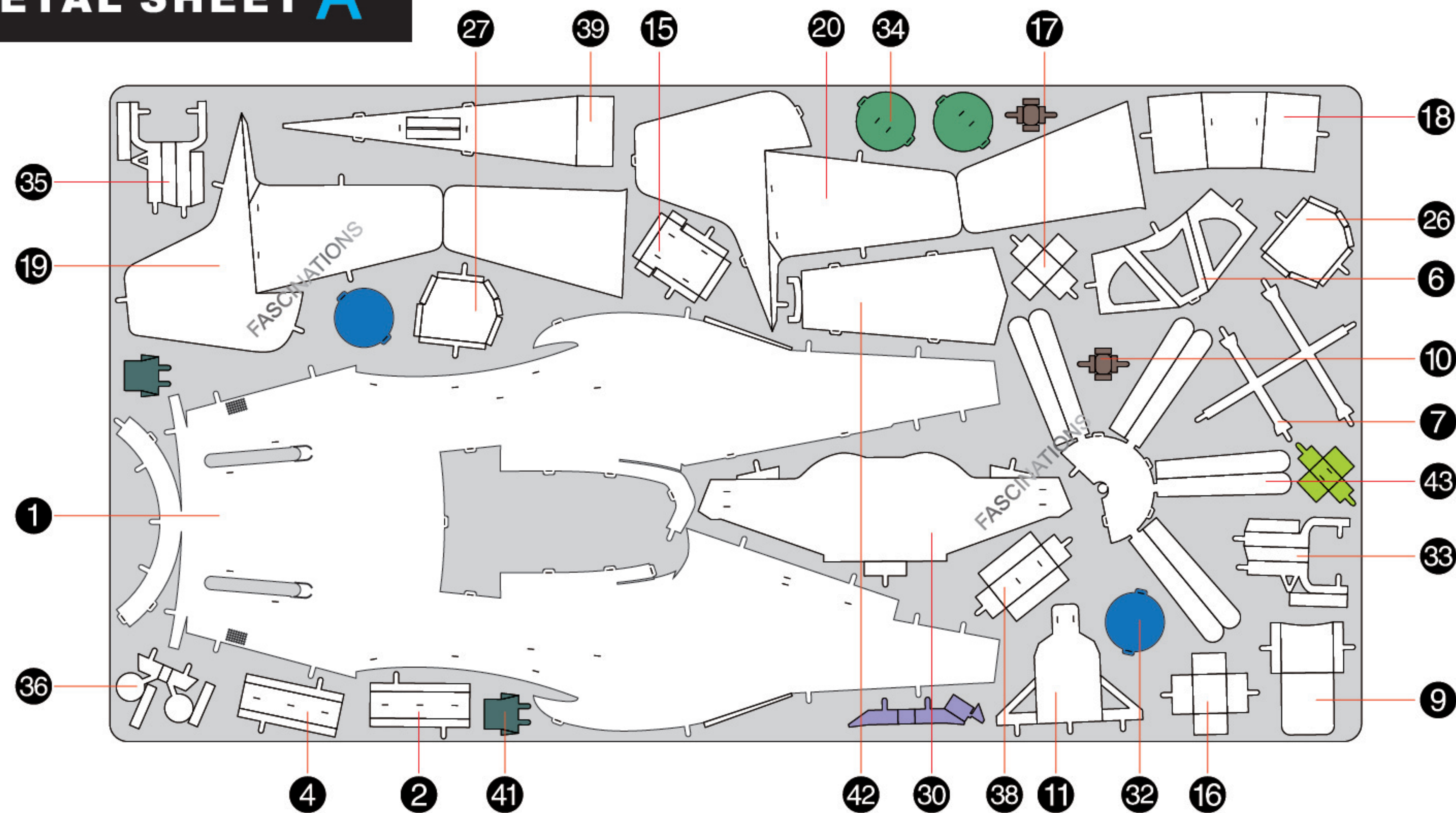


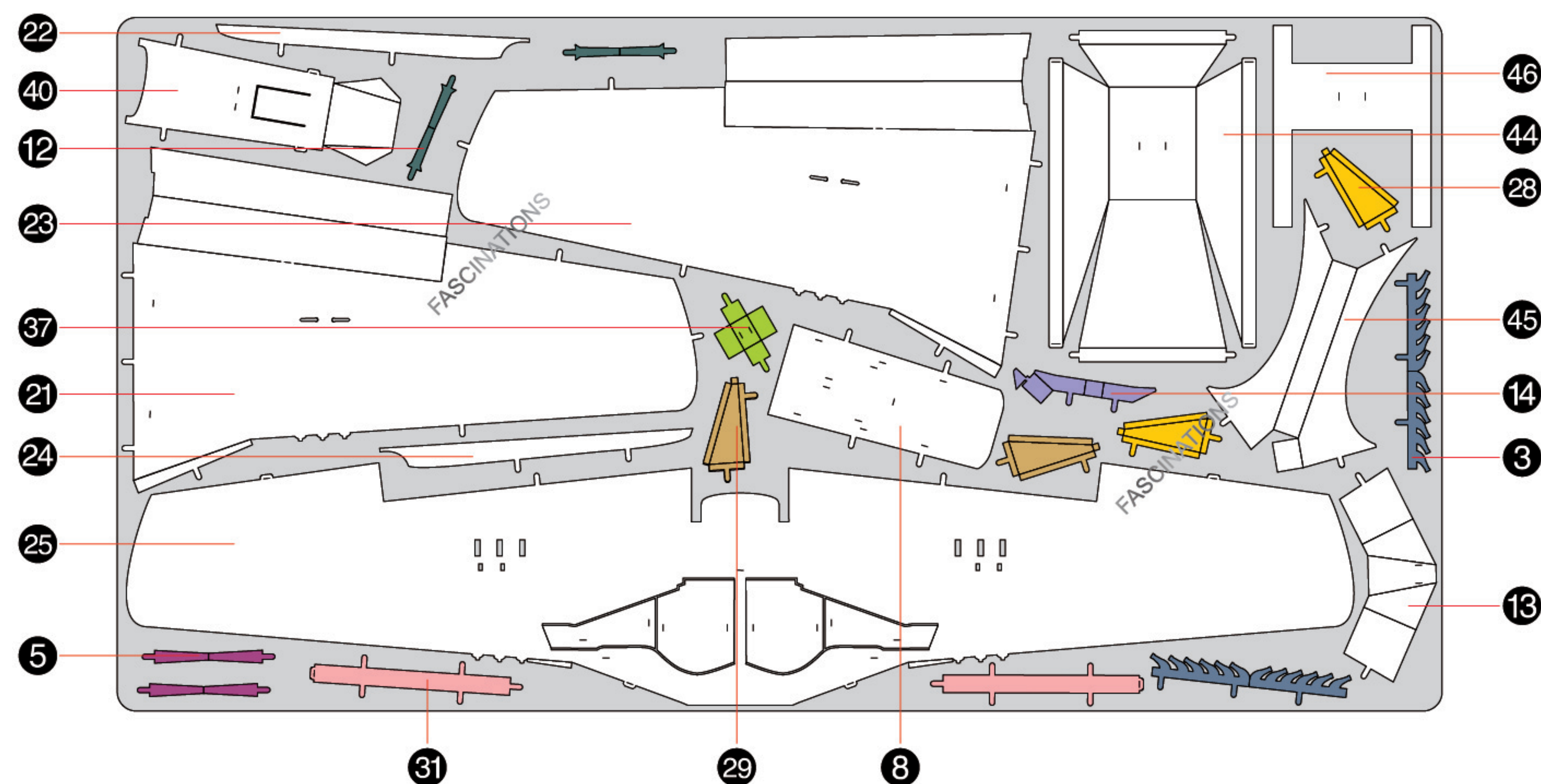


It is highly recommended that you visit
www.metalearth.com/360/icx142
to see the completed model before assembling your own

METAL SHEET A



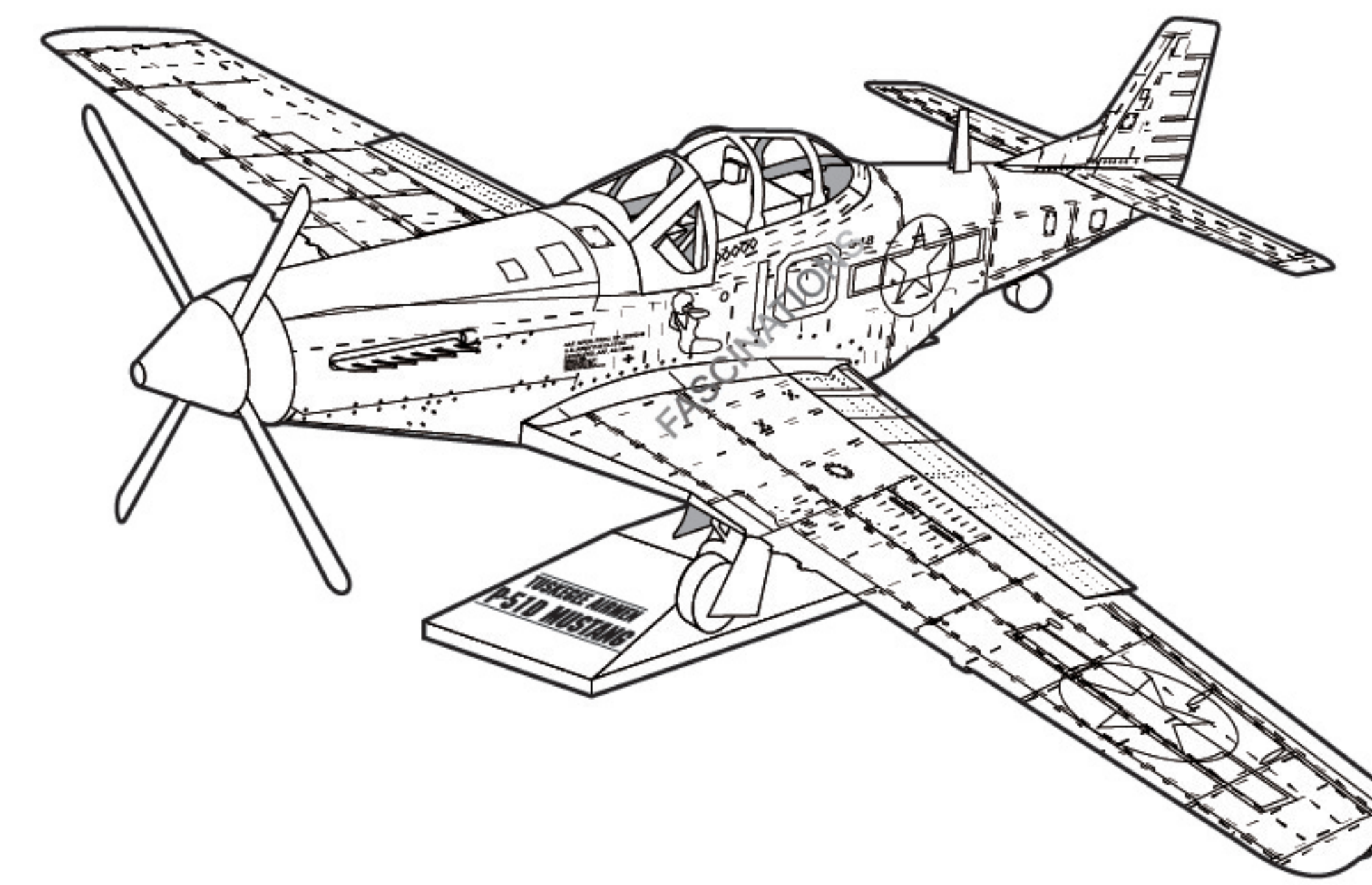
METAL SHEET B



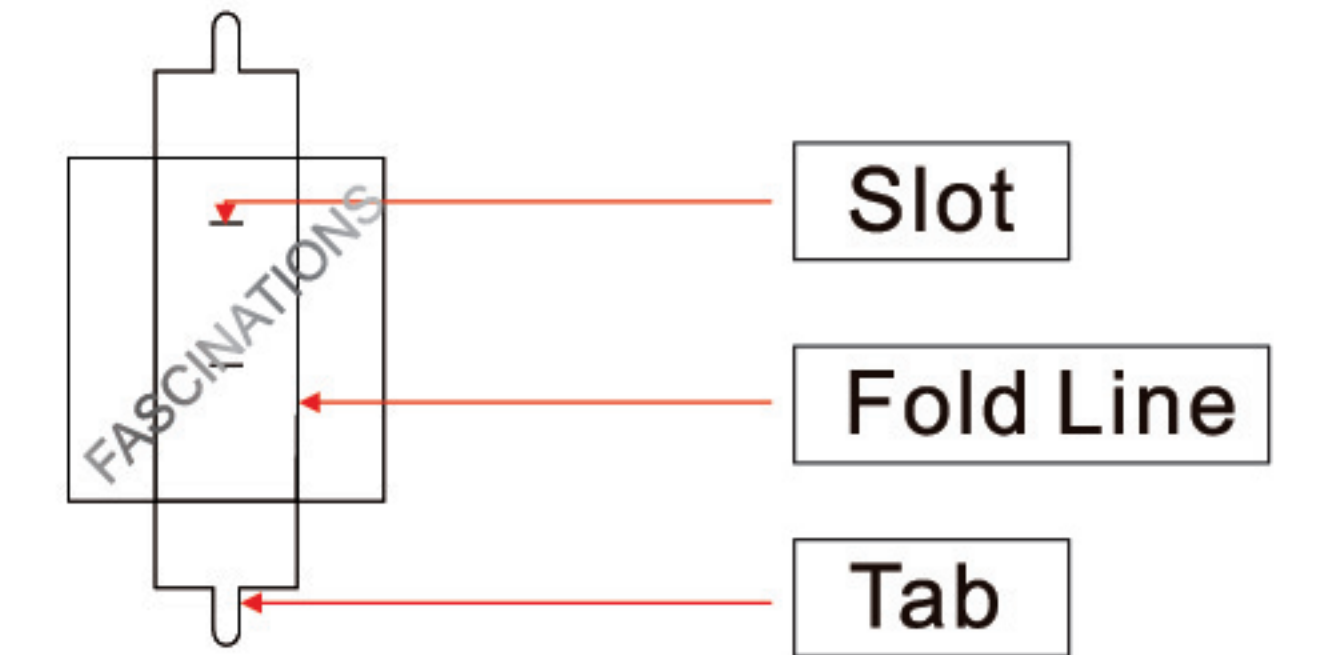
In order to avoid possible injury from sharp edges, please carefully discard the metal sheets after parts have been removed

ICX142

TUSKEGEE AIRMEN P-51D MUSTANG



TO CREATE THE BEST CONNECTIONS



Legends:

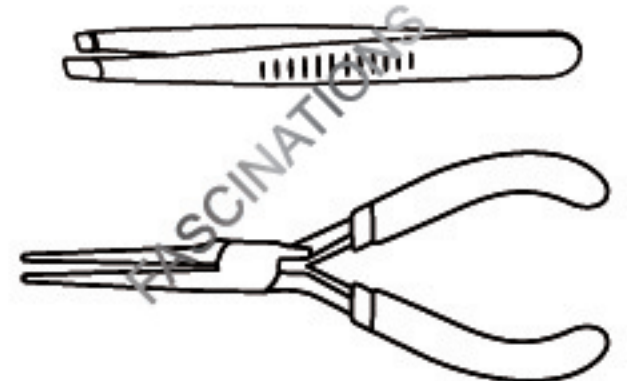
- E** Engraved/Color side
- NE** Non-engraved/Silver side
- Attention point
- Insert tab and bend 90 degrees
- Insert tab and twist 90 degrees

Recommended tools:

-Wire cutters: helpful for taking parts from the metal sheets.



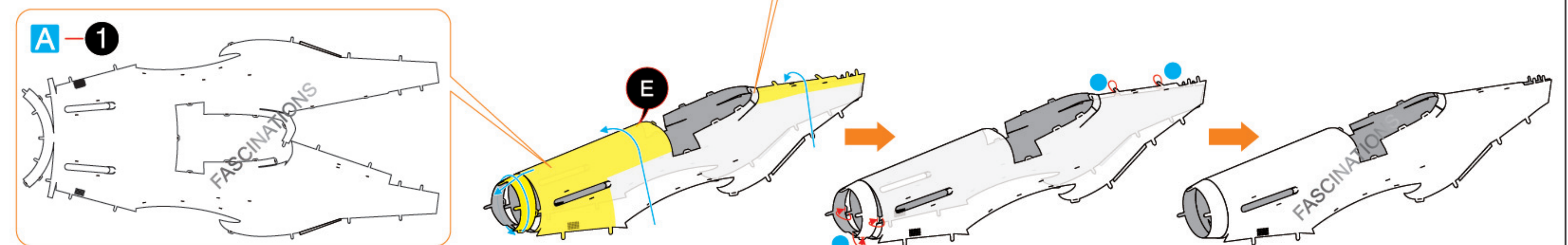
-Tweezers or needle nose pliers: helpful for folding parts, bending and twisting tabs.



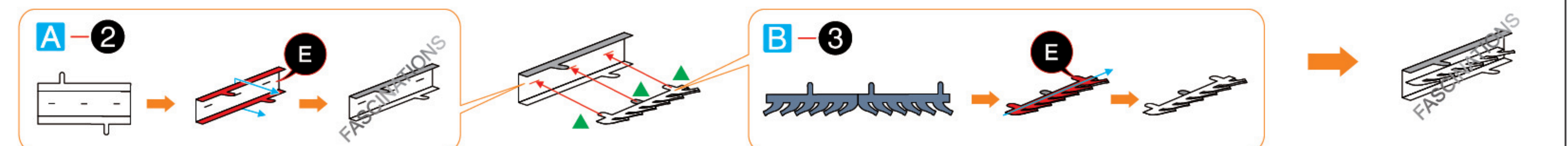
Assembly tip:

If needed, slightly twist tabs to hold parts together then untwist and bend them down for a nice finish

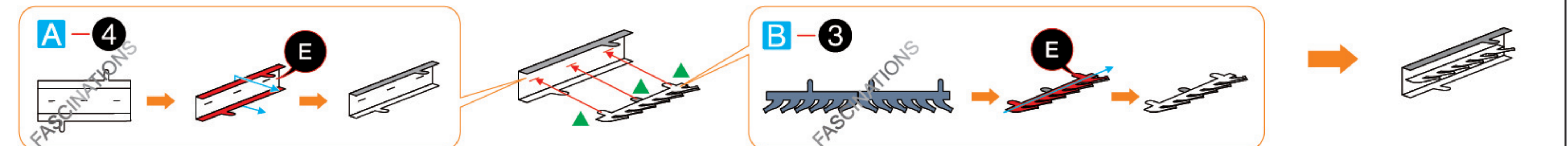
Step 1



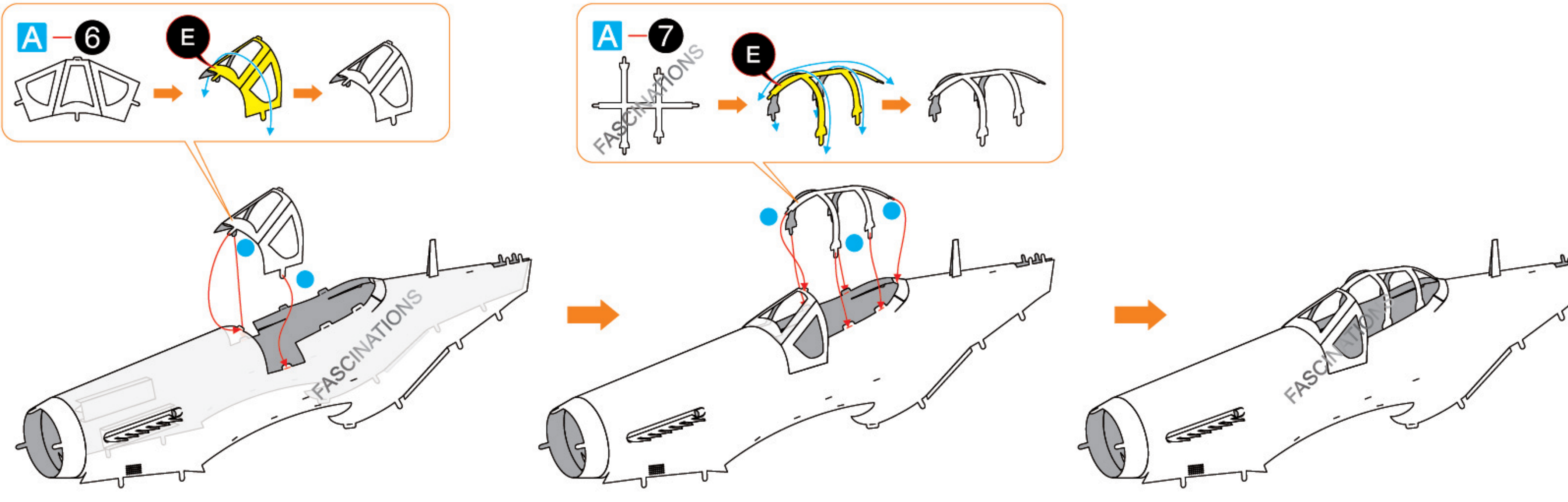
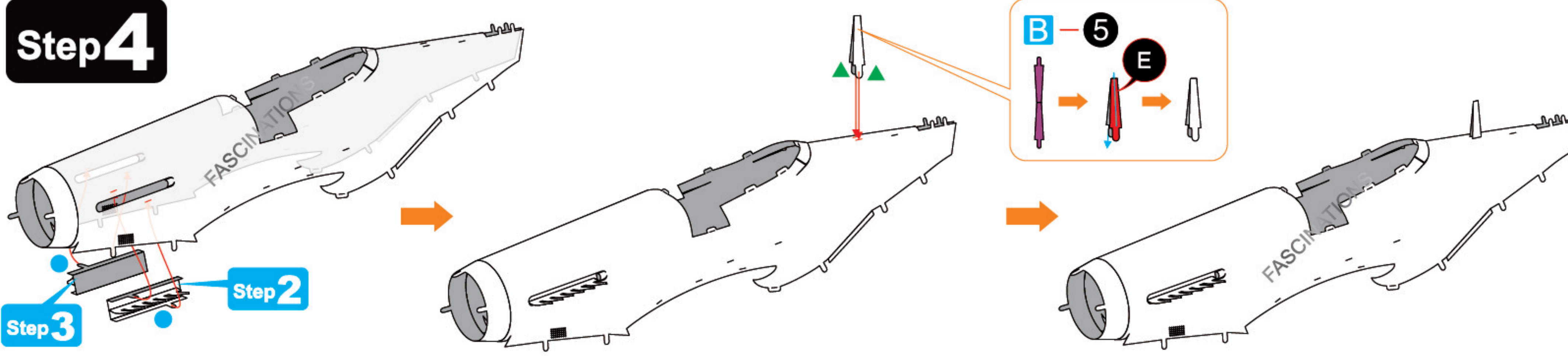
Step 2



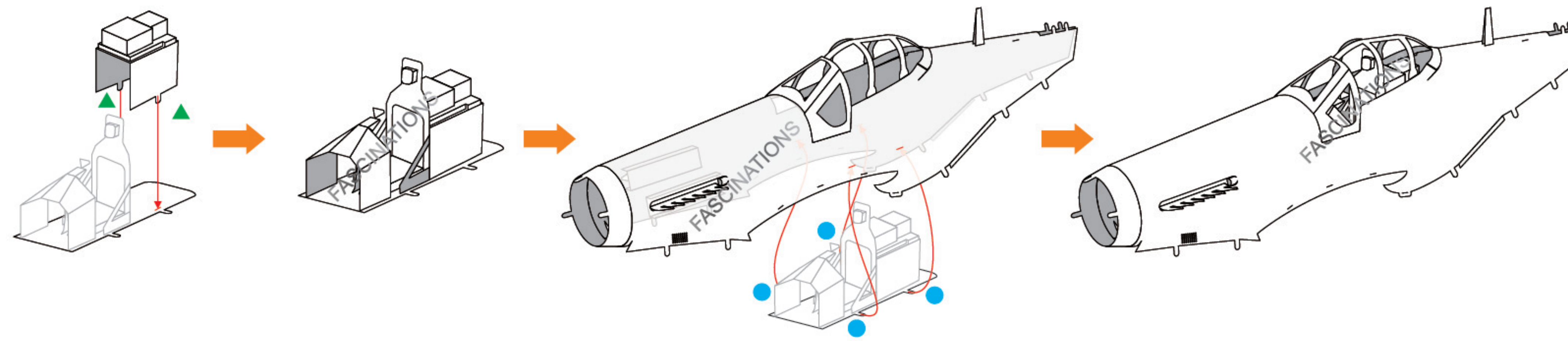
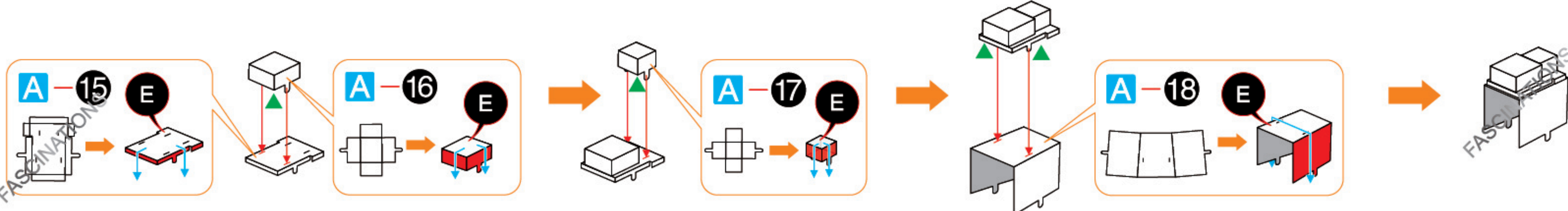
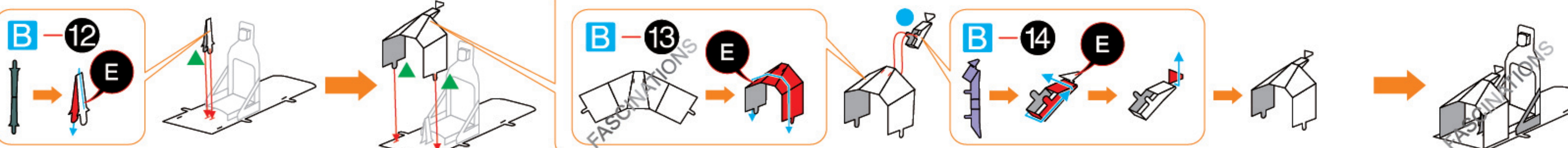
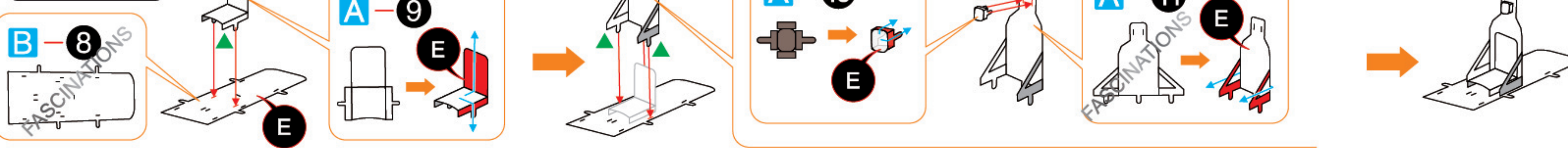
Step 3



Step 4



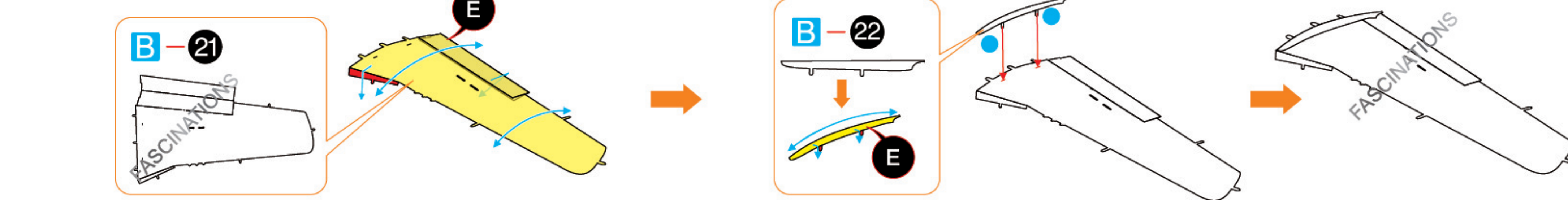
Step 5



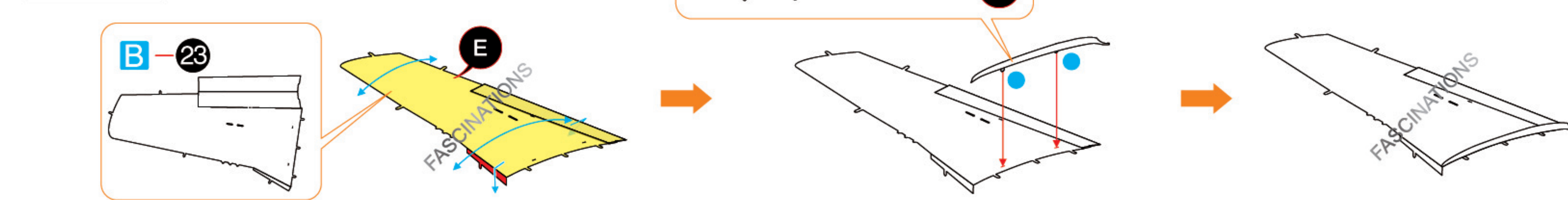
Step 6



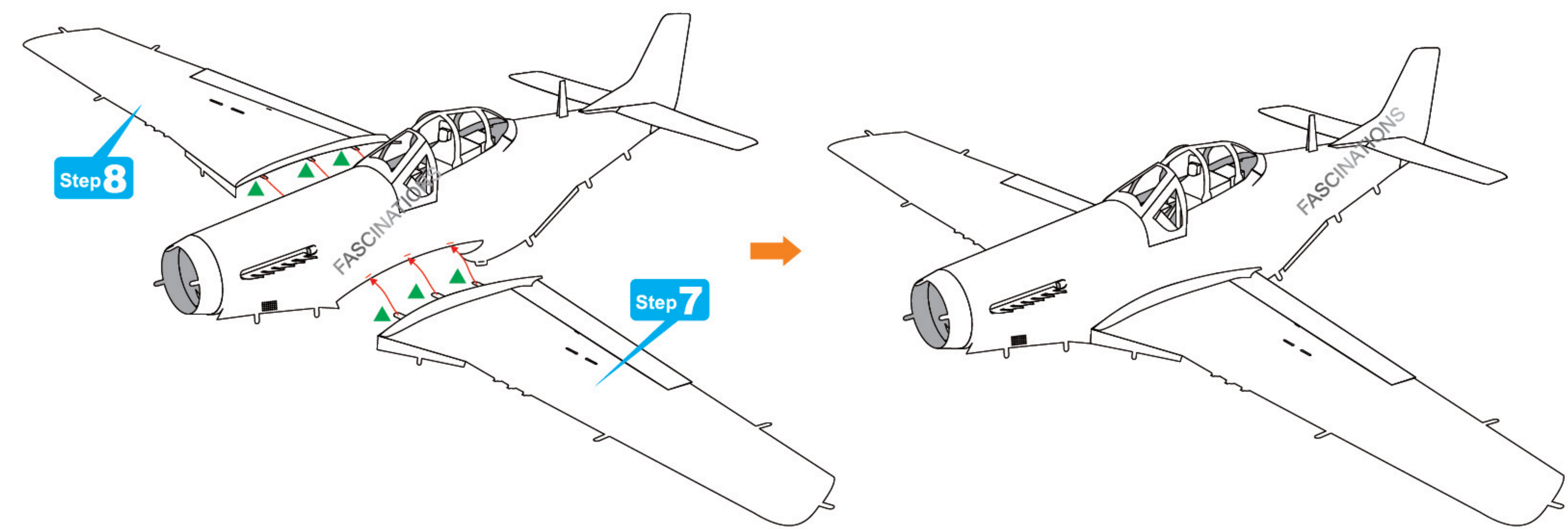
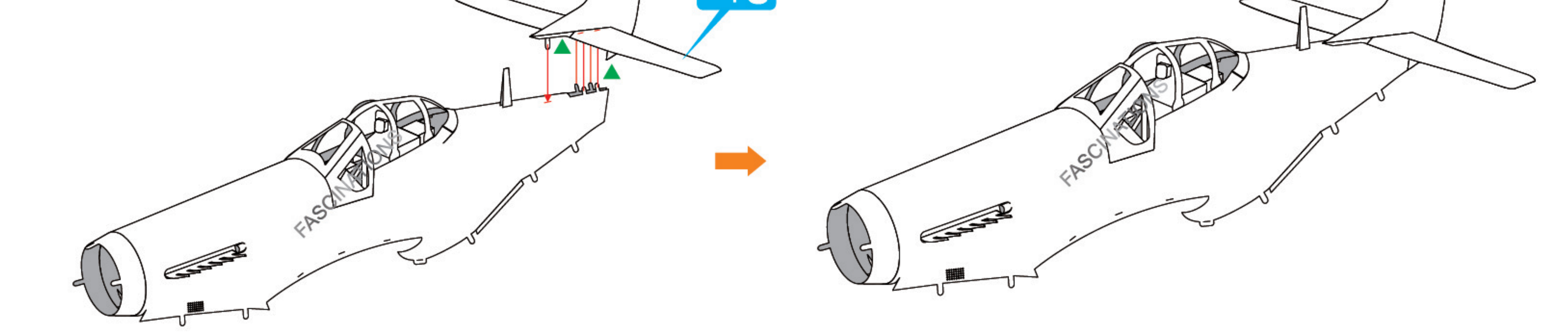
Step 7



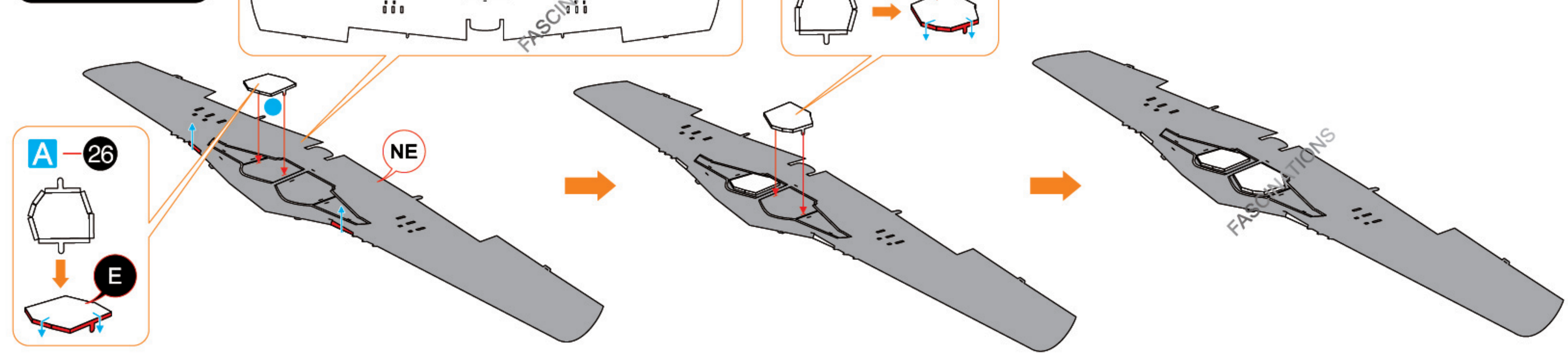
Step 8



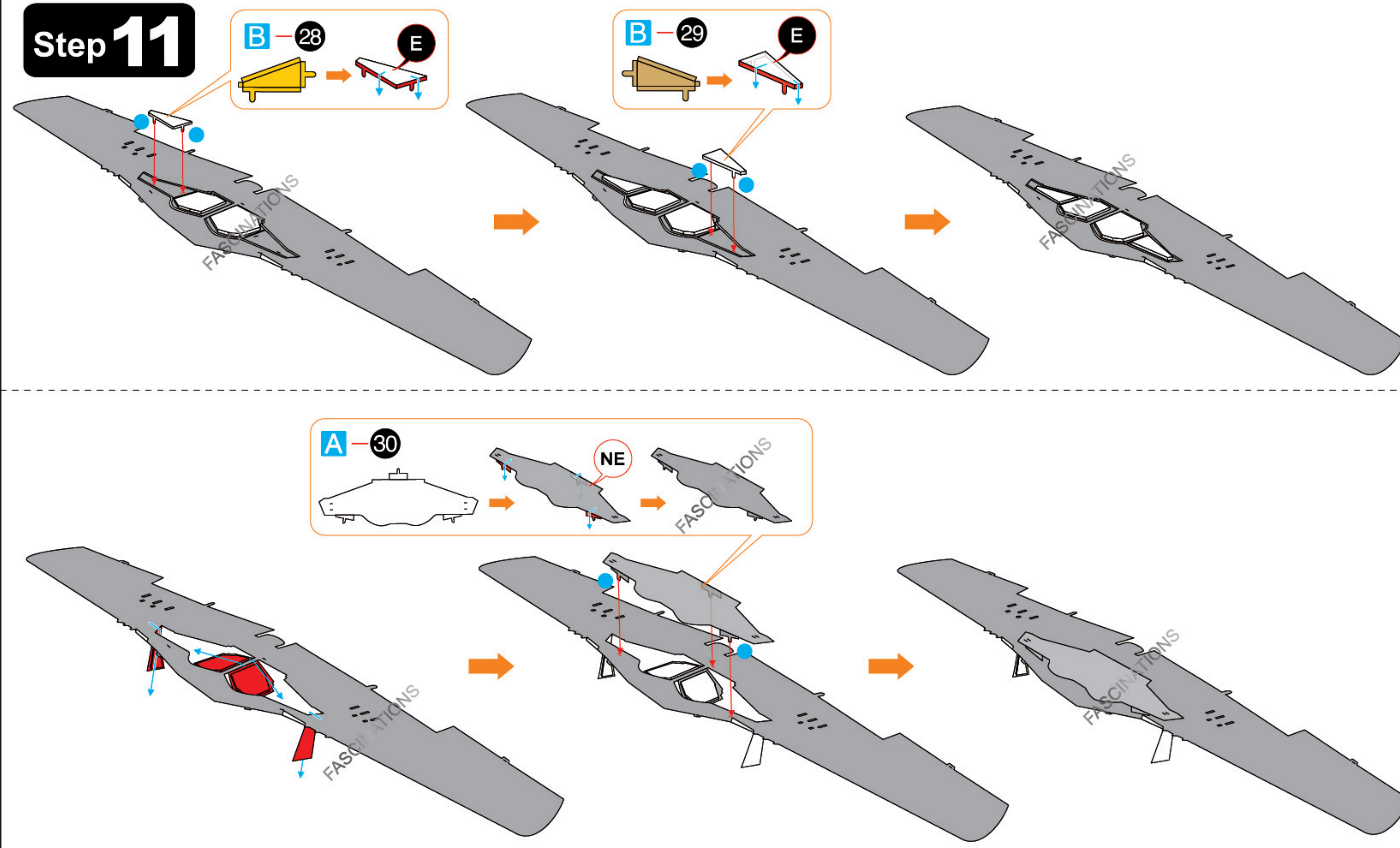
Step 9



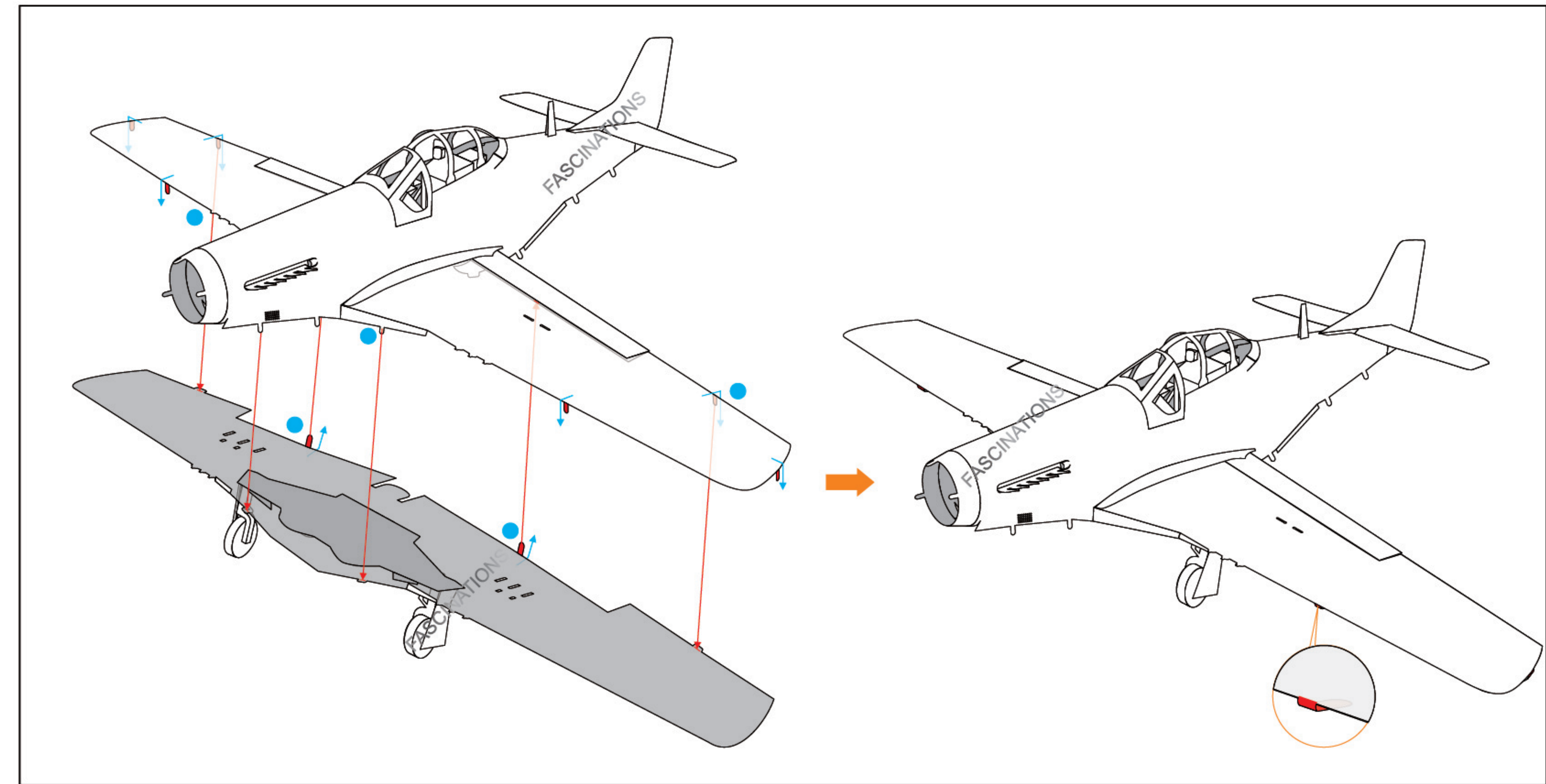
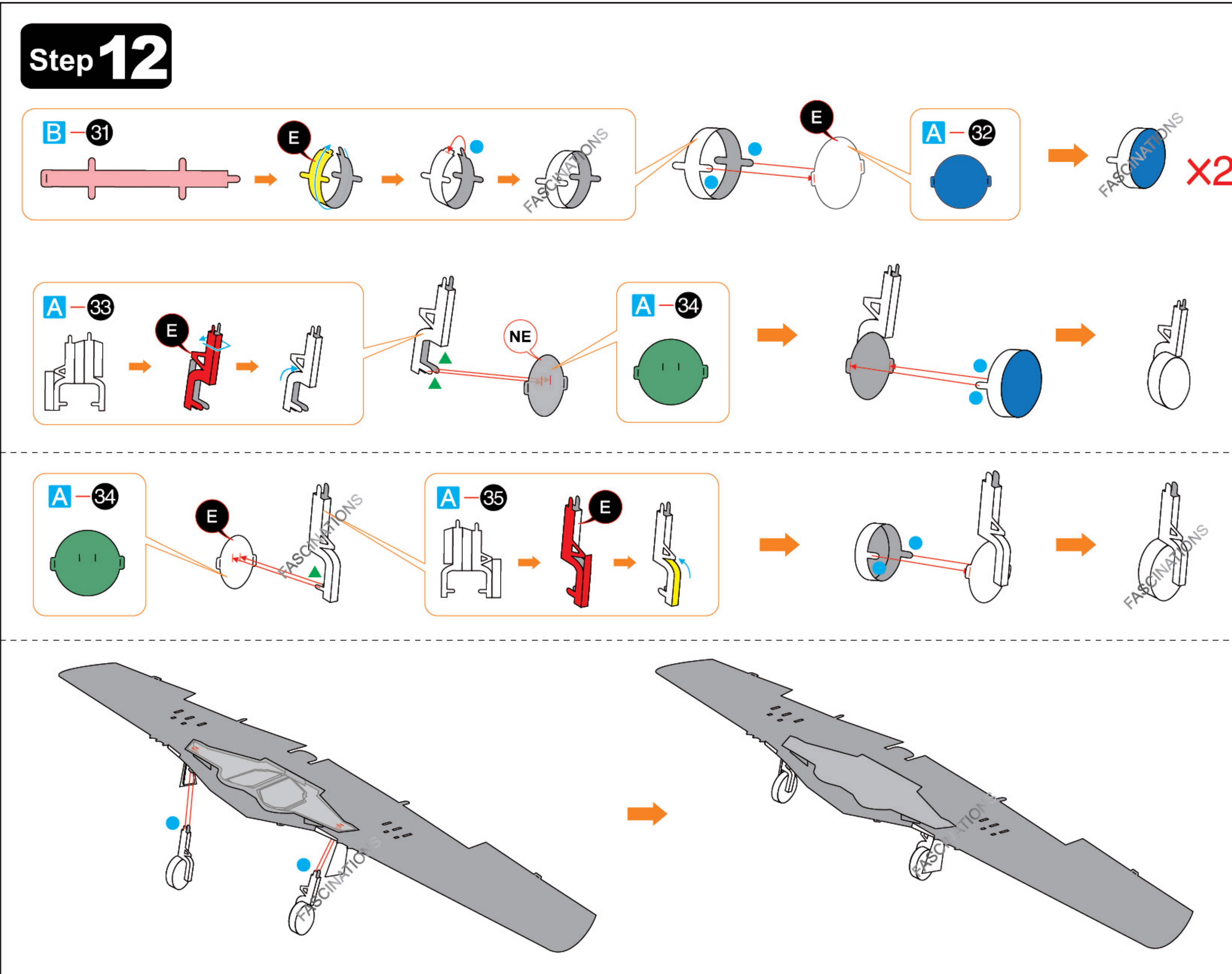
Step 10



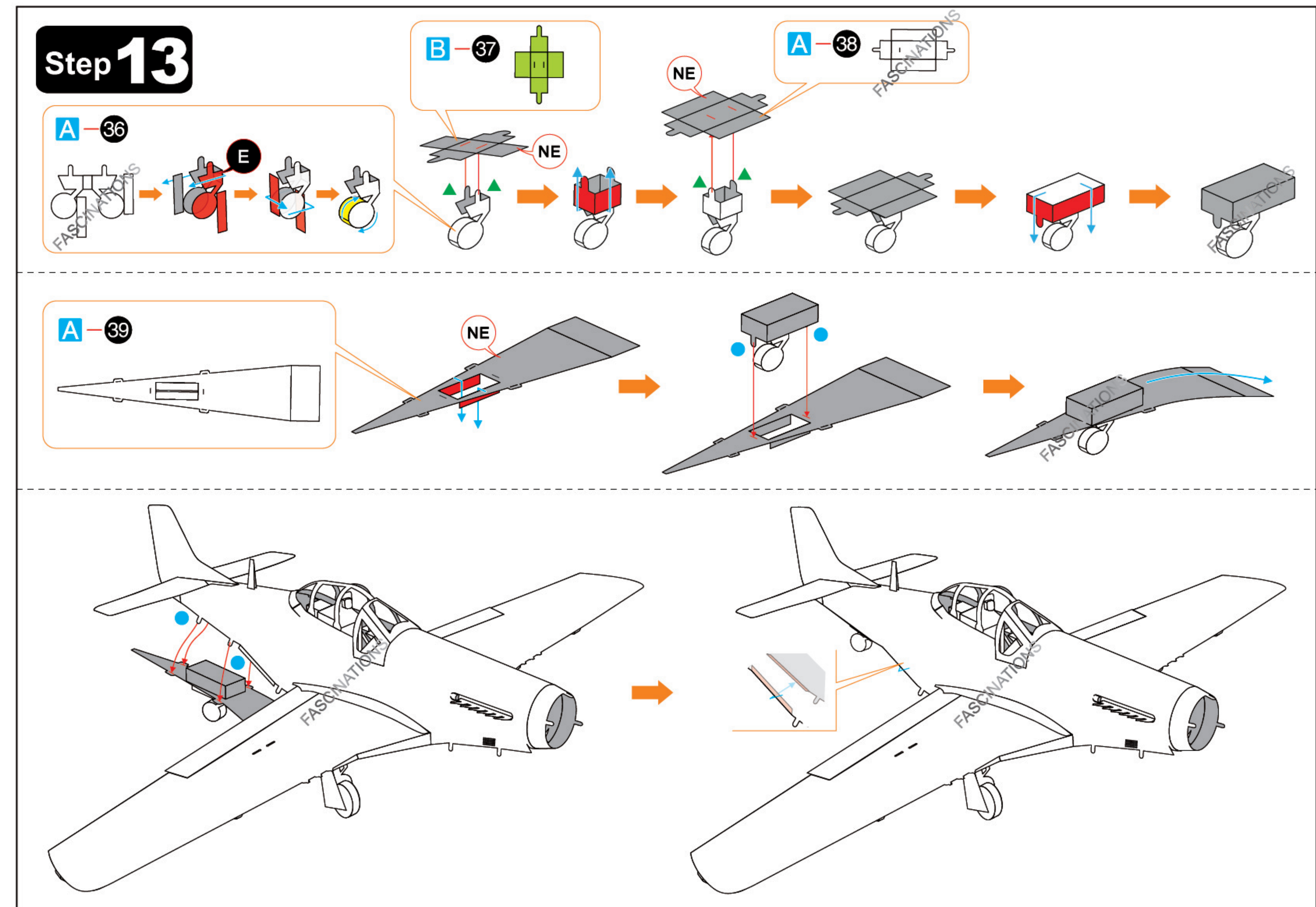
Step 11



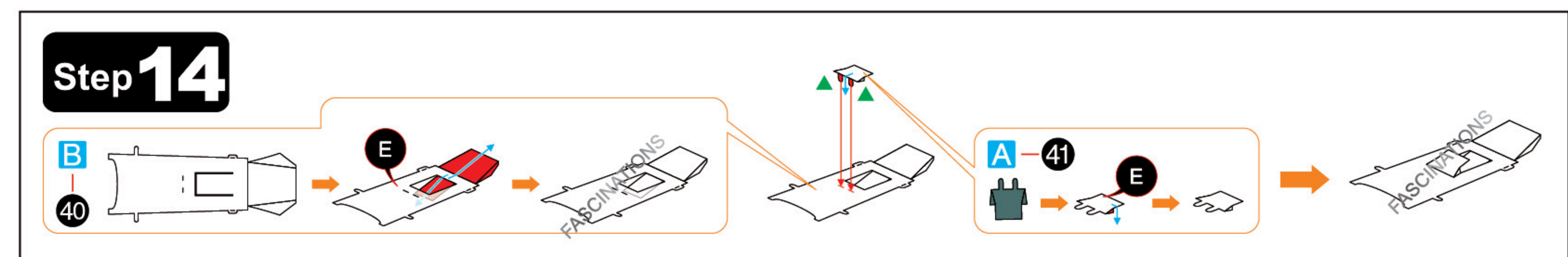
Step 12

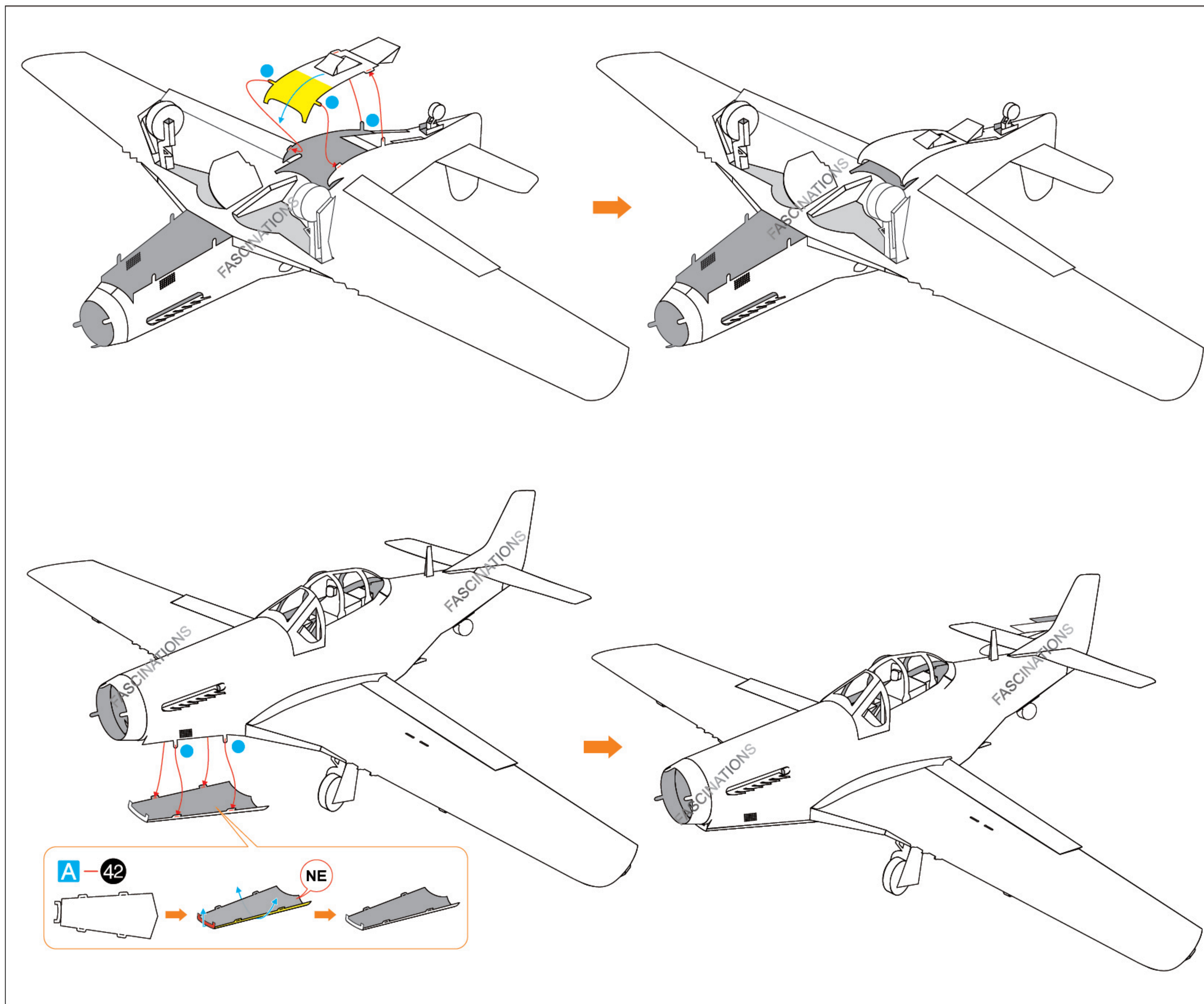


Step 13

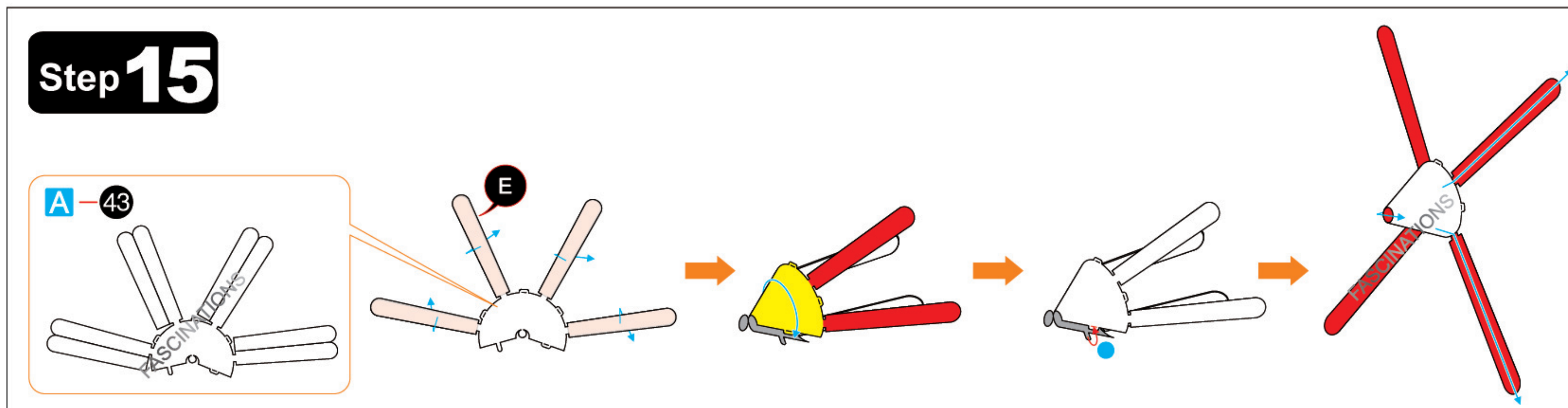


Step 14

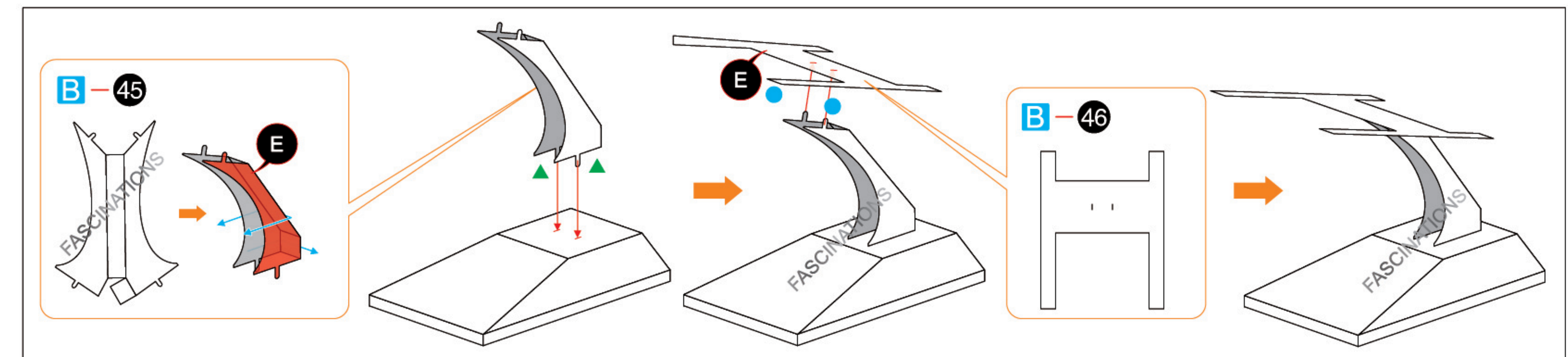
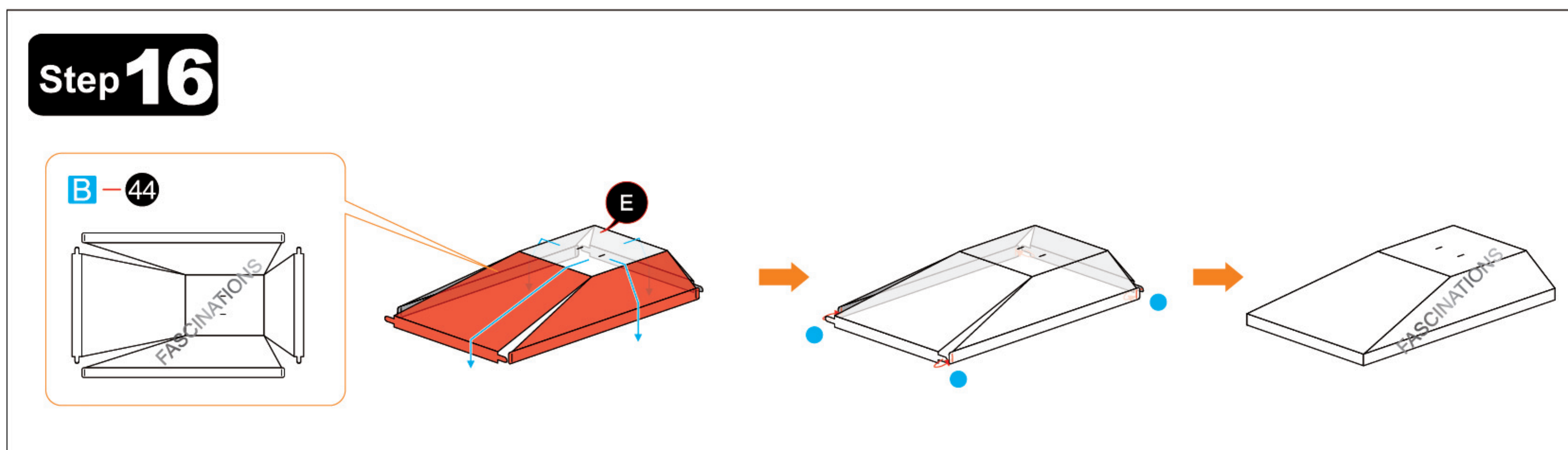




Step 15



Step 16



Step 17

