

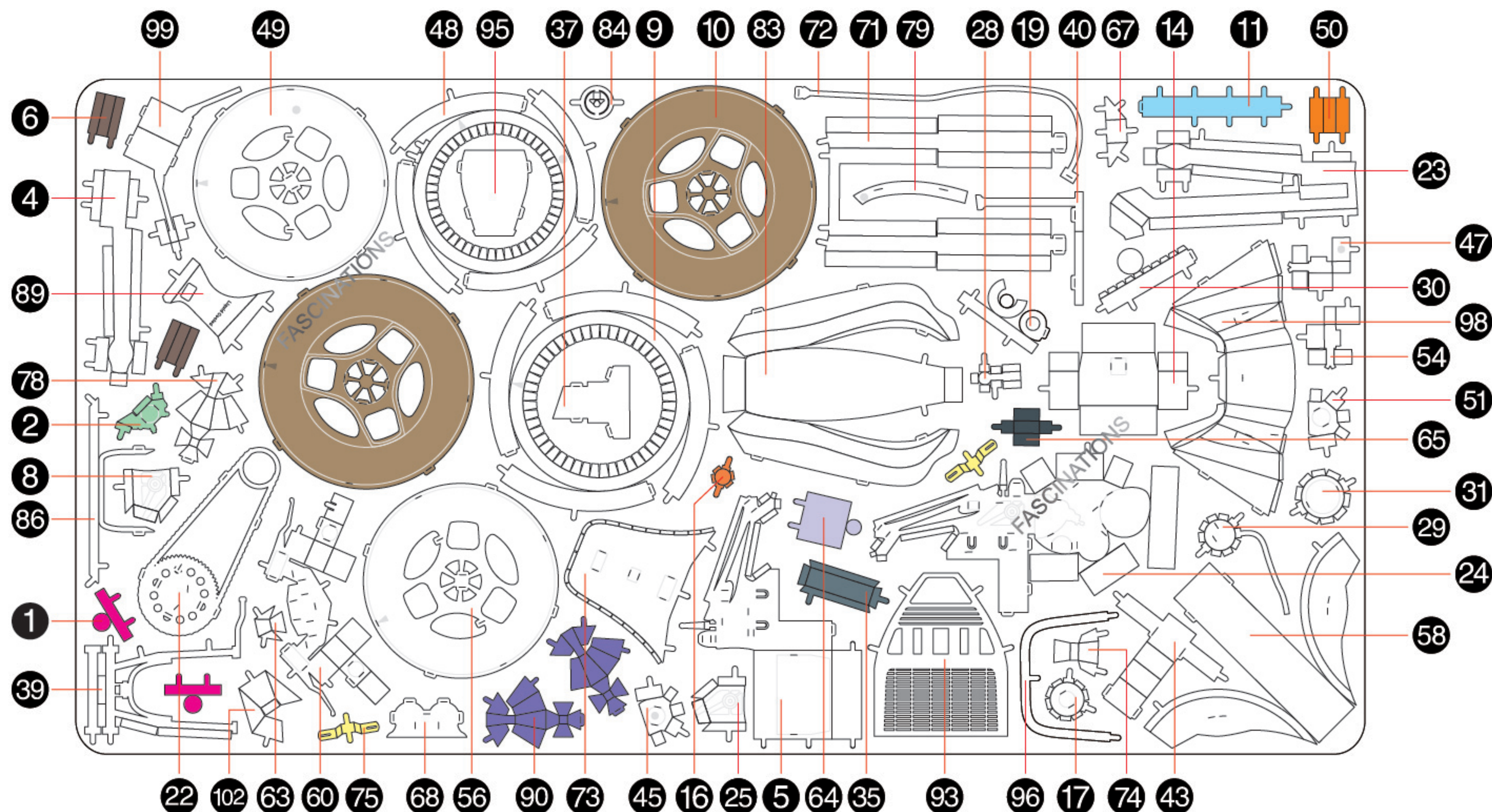


It is highly recommended that you visit  
[www.metalearth.com/360/icx145](http://www.metalearth.com/360/icx145)  
to see the completed model before assembling your own

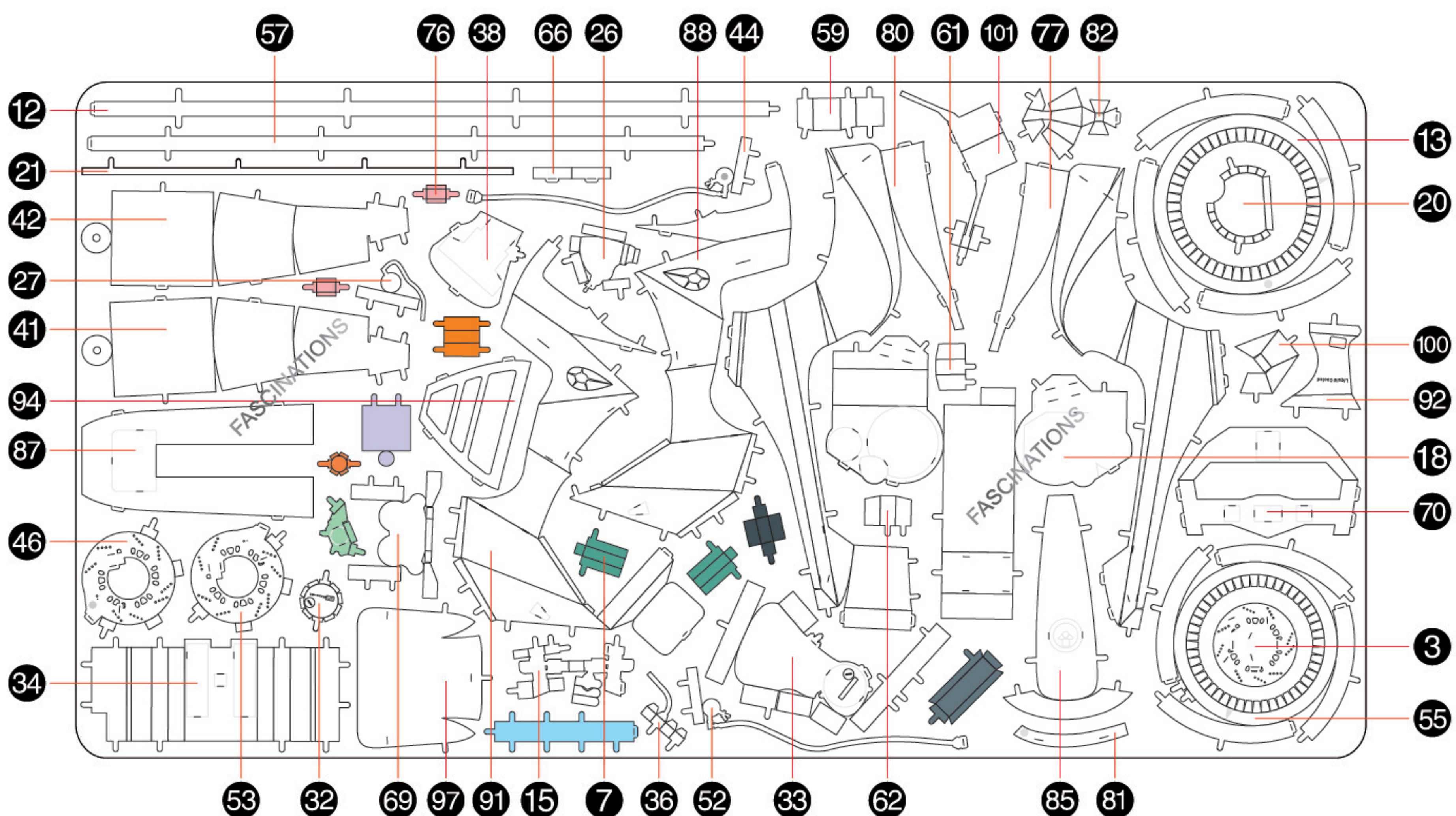
## Premium Series

### METAL SHEET A

Parts that are in the same color are duplicates



### METAL SHEET B

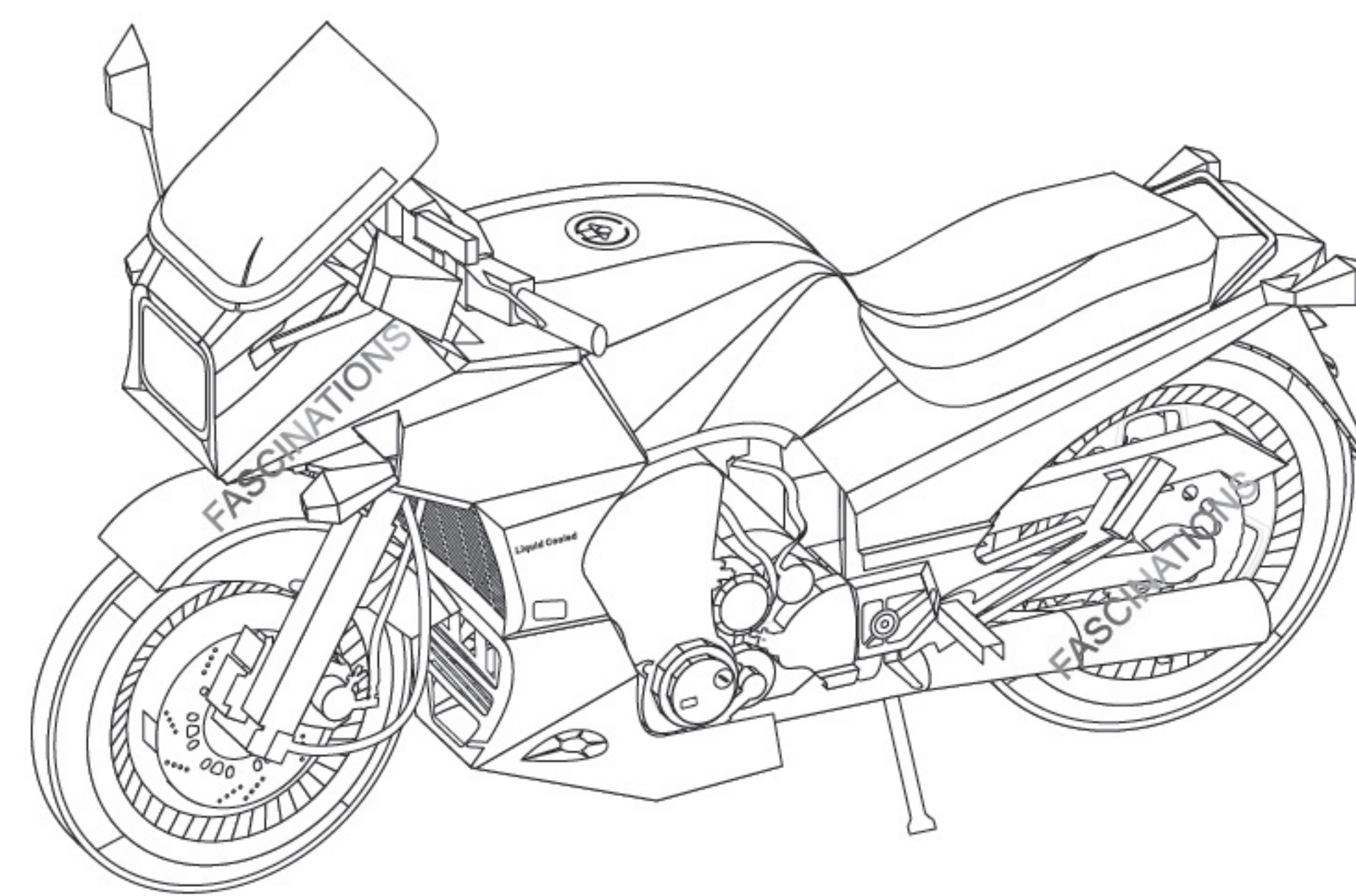


In order to avoid possible injury from sharp edges, please carefully discard the metal sheets after parts have been removed

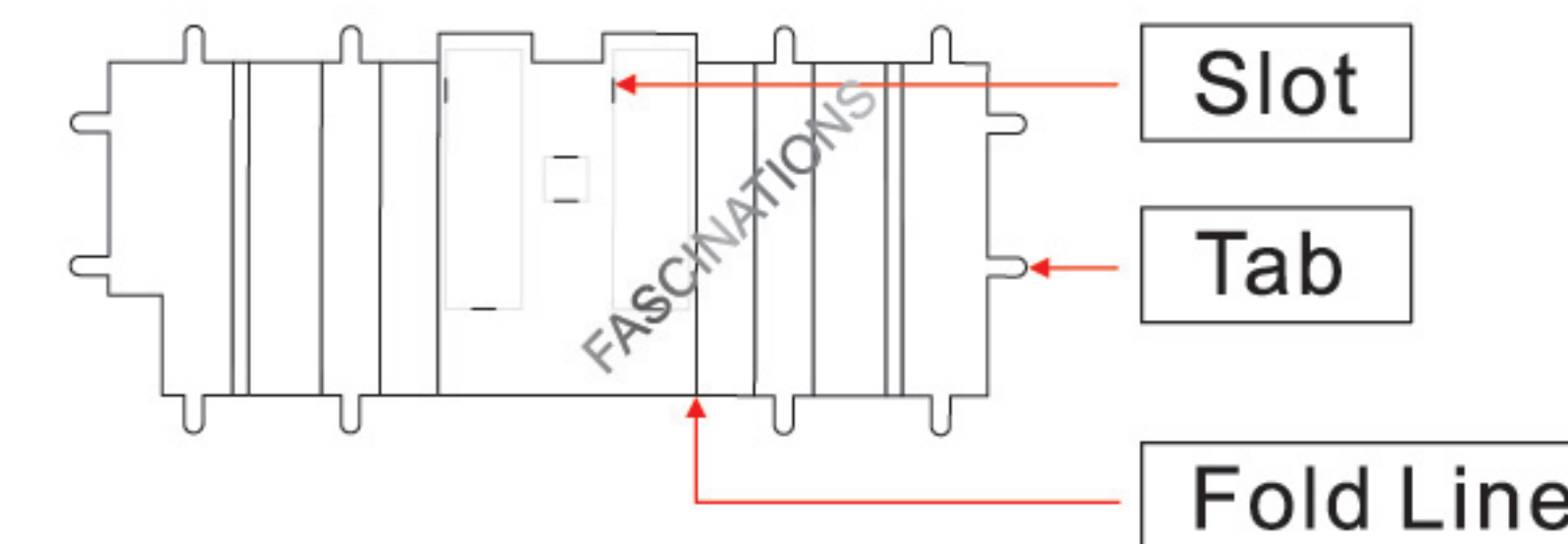
Go to [www.metalearth.com/360/icx145](http://www.metalearth.com/360/icx145) to see the zoomable PDF version of this instruction sheet

ICX 145

KAWASAKI GPz900R



### TO CREATE THE BEST CONNECTIONS



#### Legends:

- E** Engraved / Color side
- NE** Non-engraved / Silver side
- Attention point
- Insert tab and bend 90 degrees
- Insert tab and twist 90 degrees

#### Recommended tools:

-Wire cutters: helpful for taking parts from the metal sheets.



-Tweezers or needle nose pliers: helpful for folding parts, bending and twisting tabs.

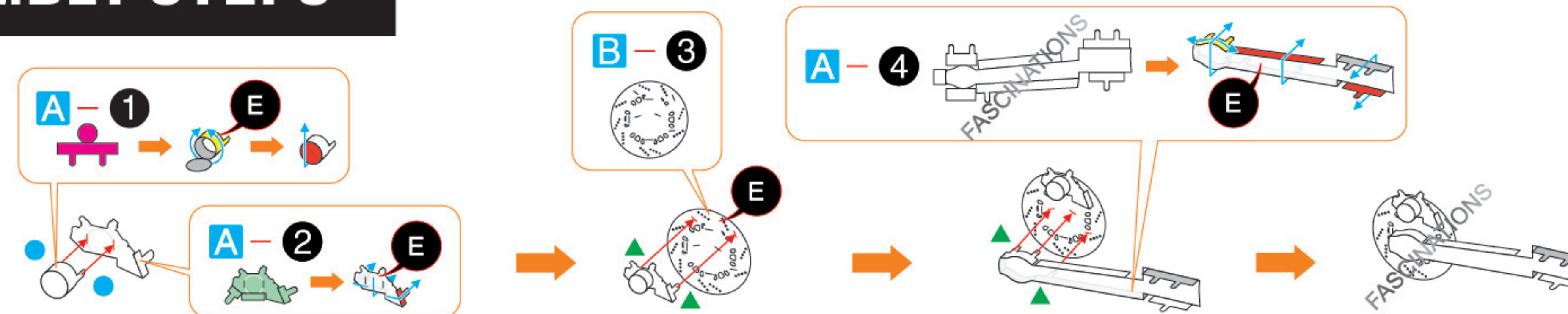


#### Assembly tip:

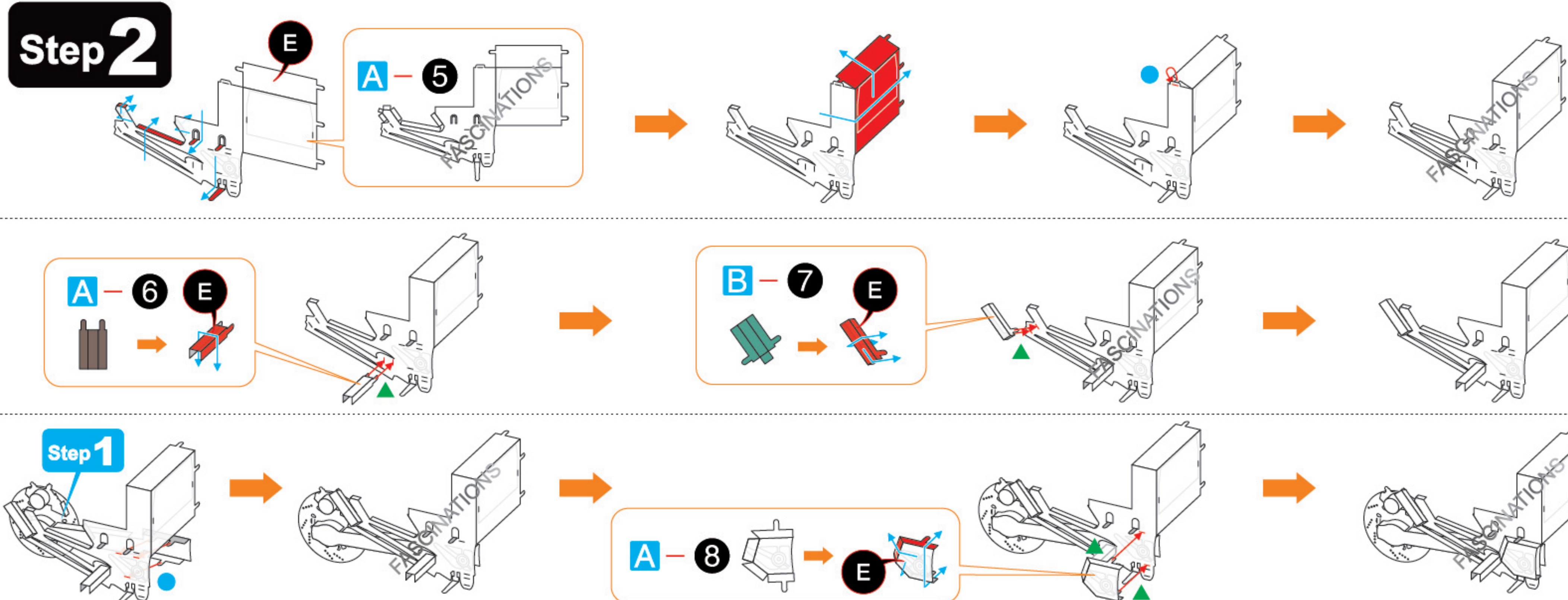
If needed, slightly twist tabs to hold parts together then untwist and bend them down for a nice finish

### ASSEMBLY STEPS

#### Step 1



#### Step 2



#### Step 3





