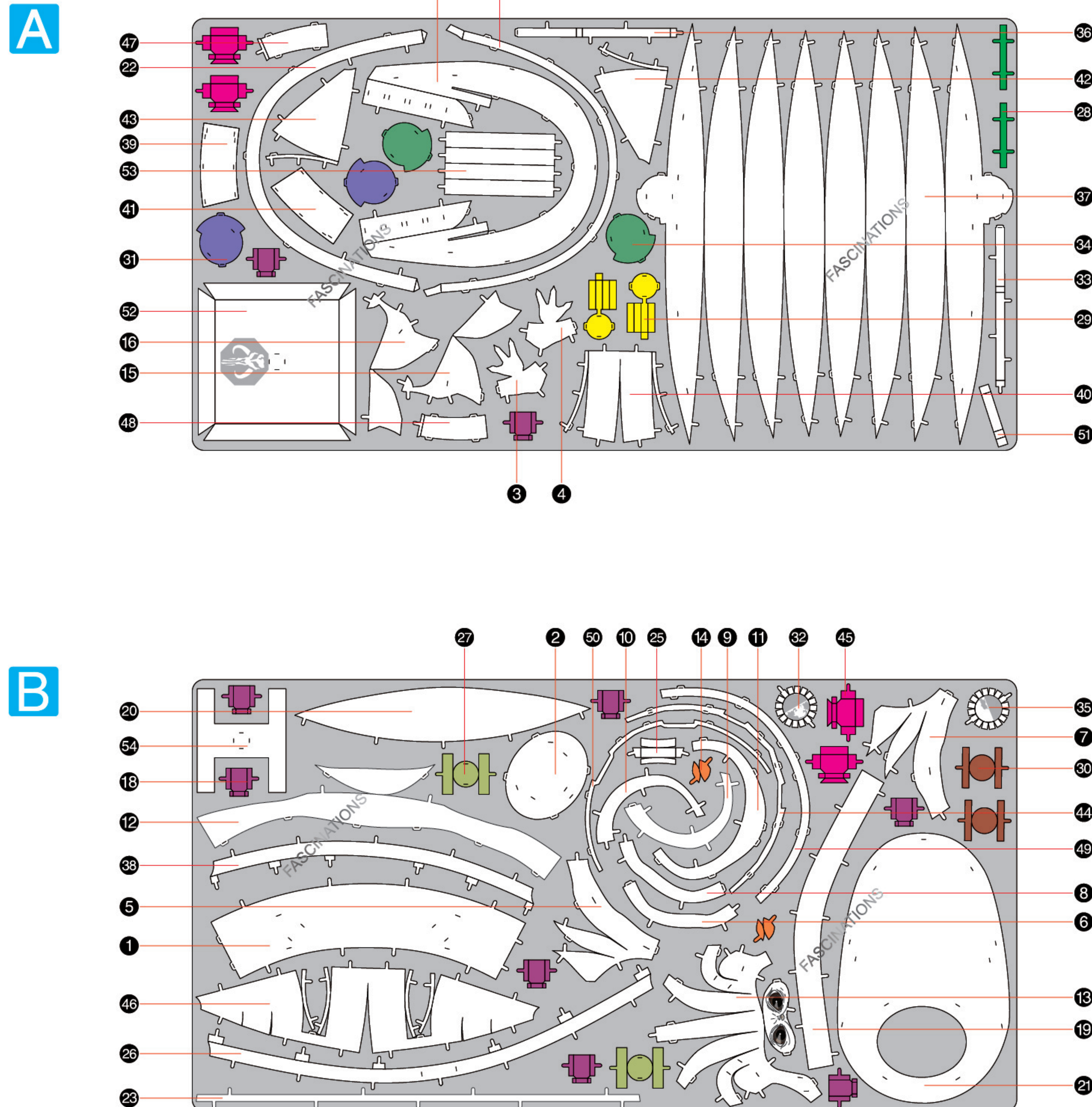




It is highly recommended that you visit www.metalearth.com/360/icx210 to see the completed model before assembling your own

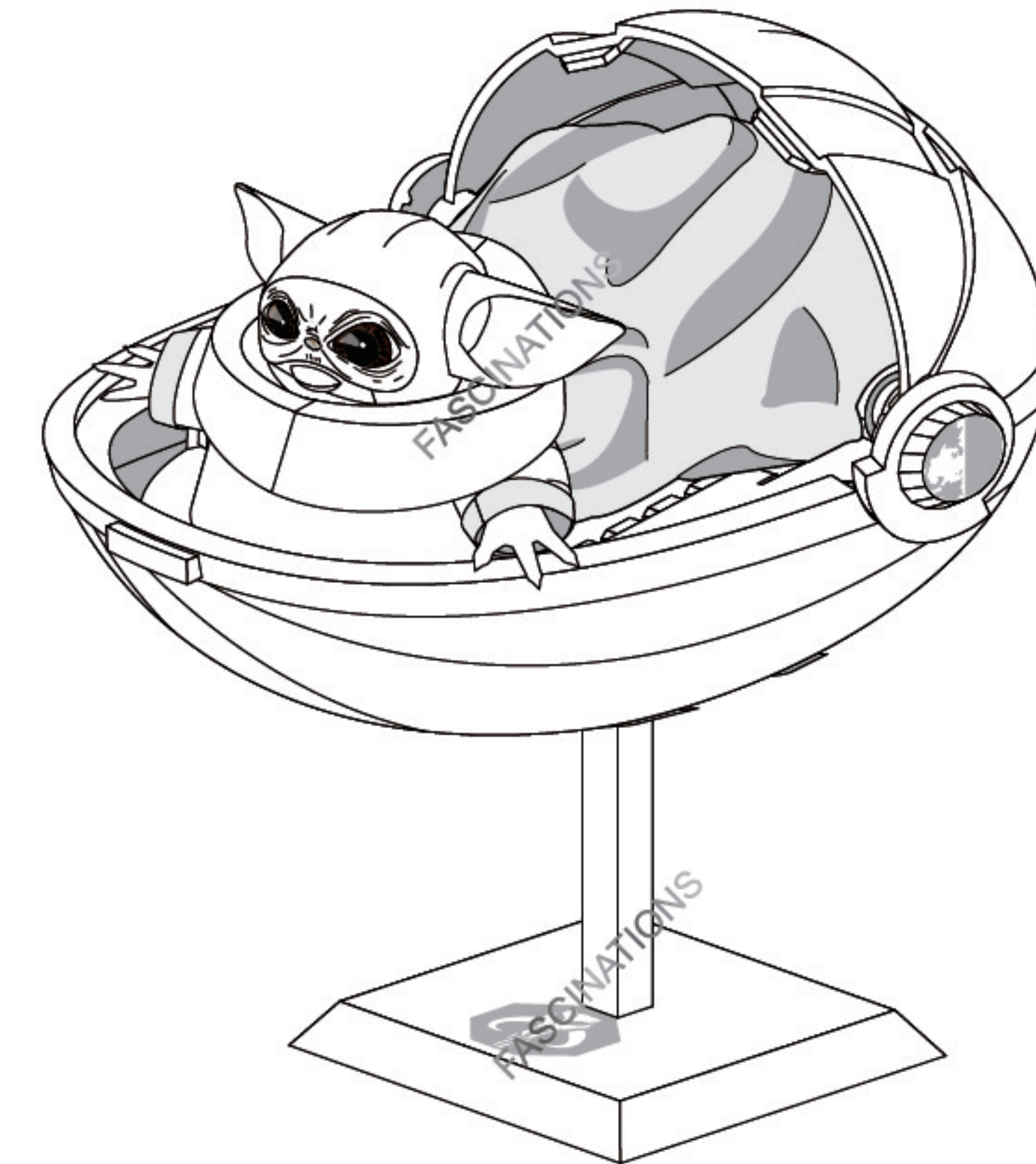
METAL SHEETS

Parts with same color are duplicates

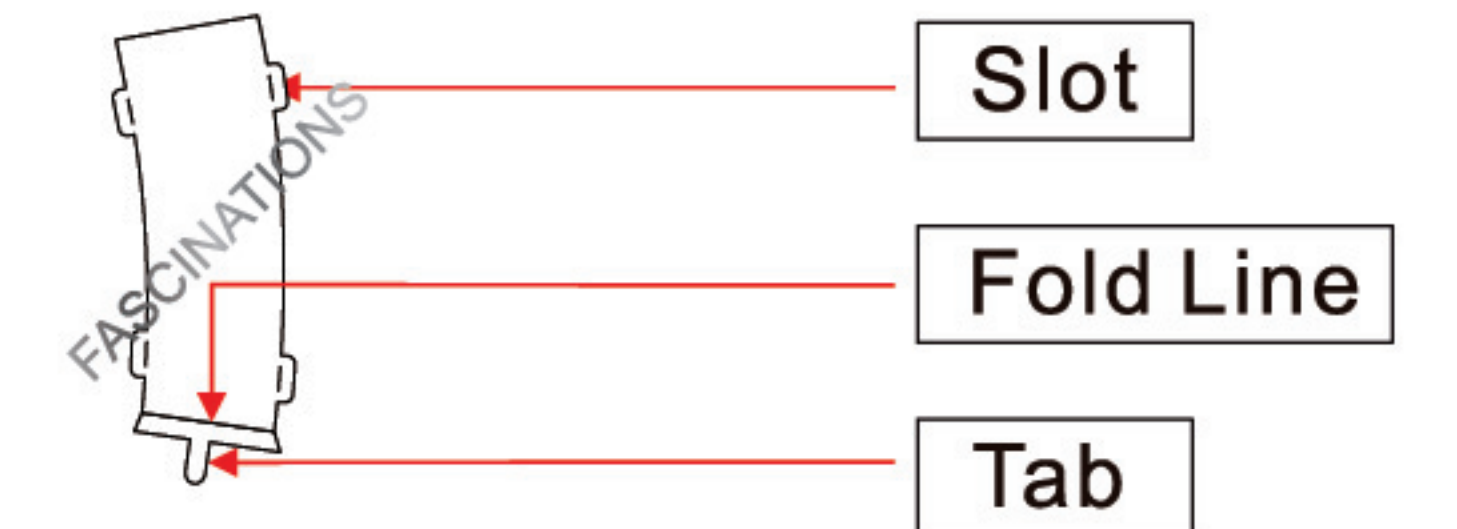


In order to avoid possible injury from sharp edges, please carefully discard the metal sheets after parts have been removed.

ICX210 THE CHILD



TO CREATE THE BEST CONNECTIONS



Legends:

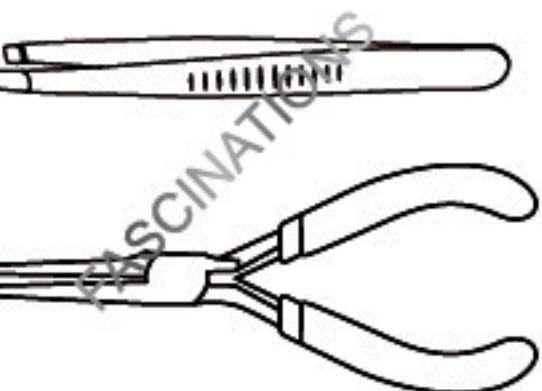
- E** Engraved/Color side
- NE** Non-engraved/Silver side
- Attention point
- Insert tab and bend 90 degrees
- Insert tab and twist 90 degrees

Recommended tools:

-Wire cutters: helpful for taking parts from the metal sheets.



-Tweezers or needle nose pliers: helpful for folding parts, bending and twisting tabs.

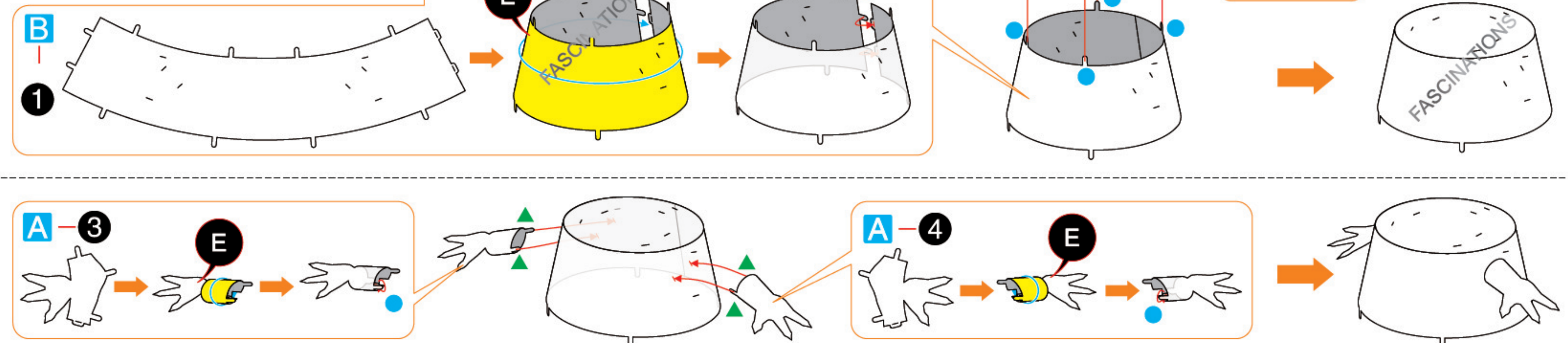


Assembly tip:

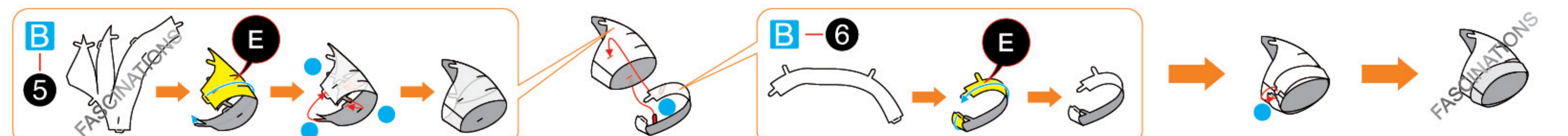
If needed, slightly twist tabs to hold parts together then untwist and bend them down for a nice finish

ASSEMBLY STEPS

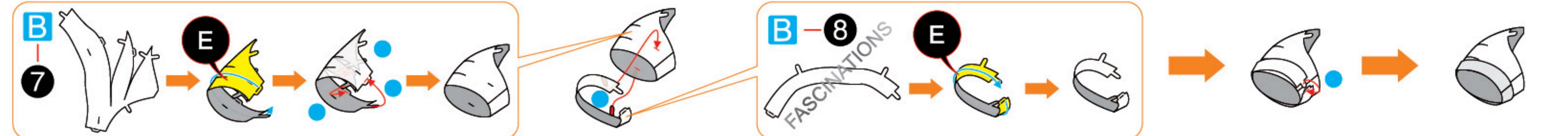
Step 1



Step 2



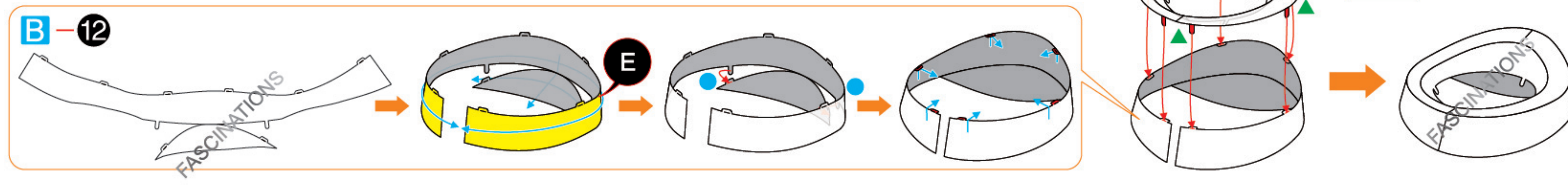
Step 3



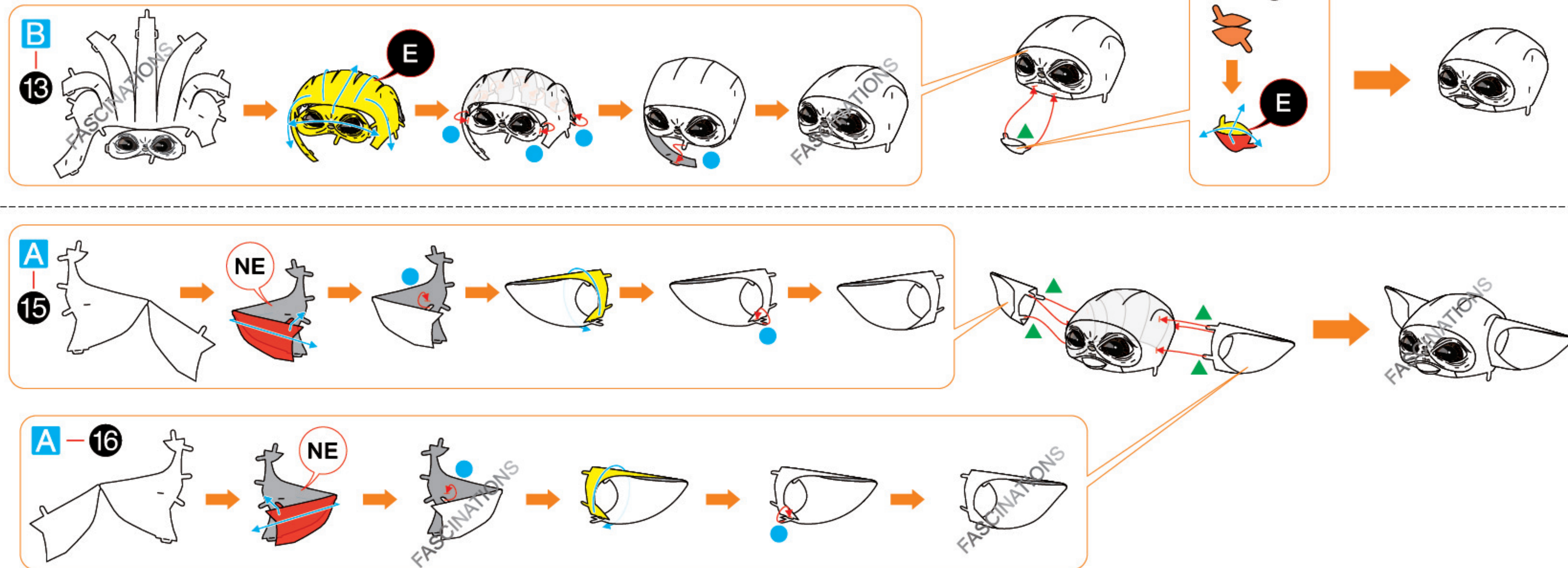
Step 4



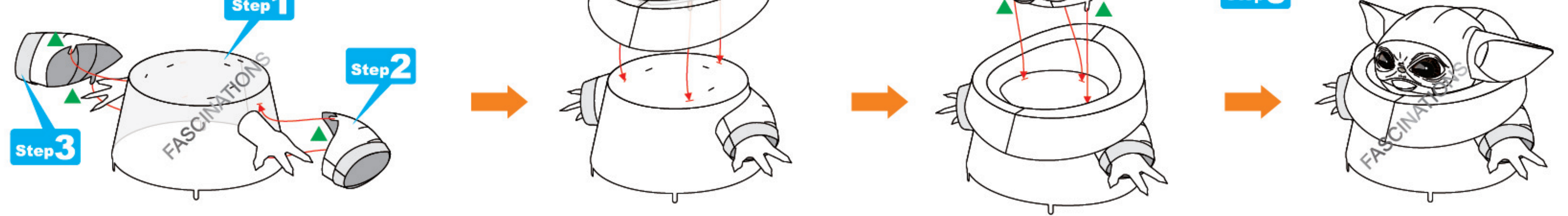
Step 5



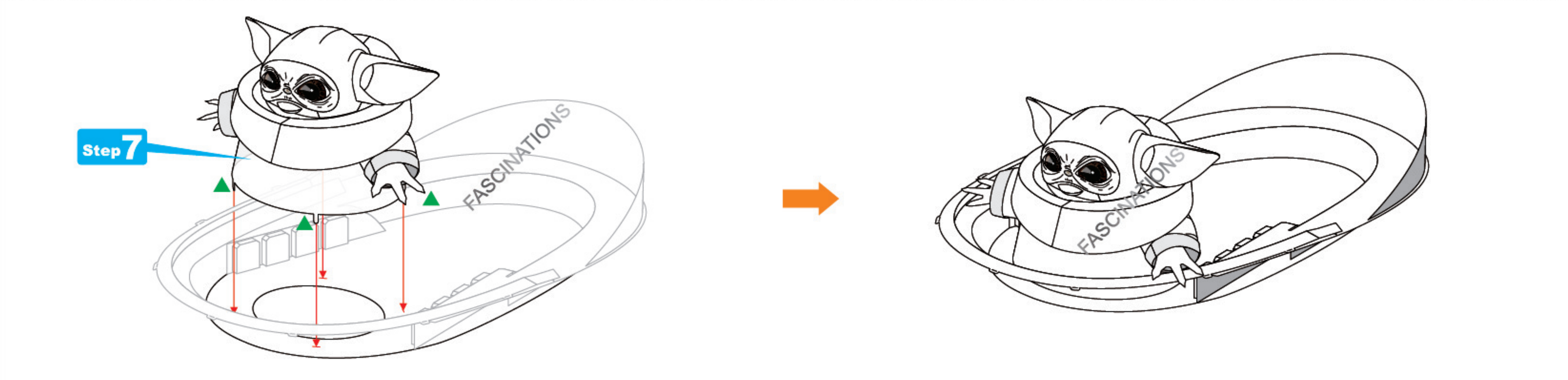
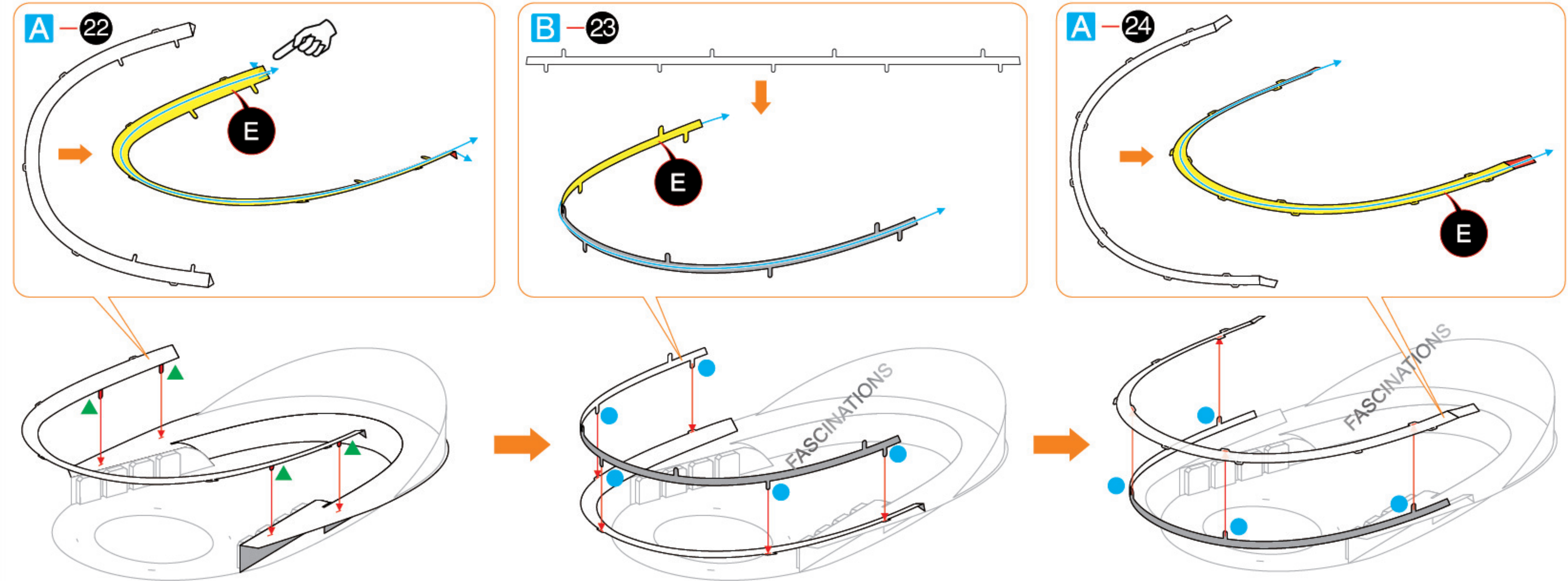
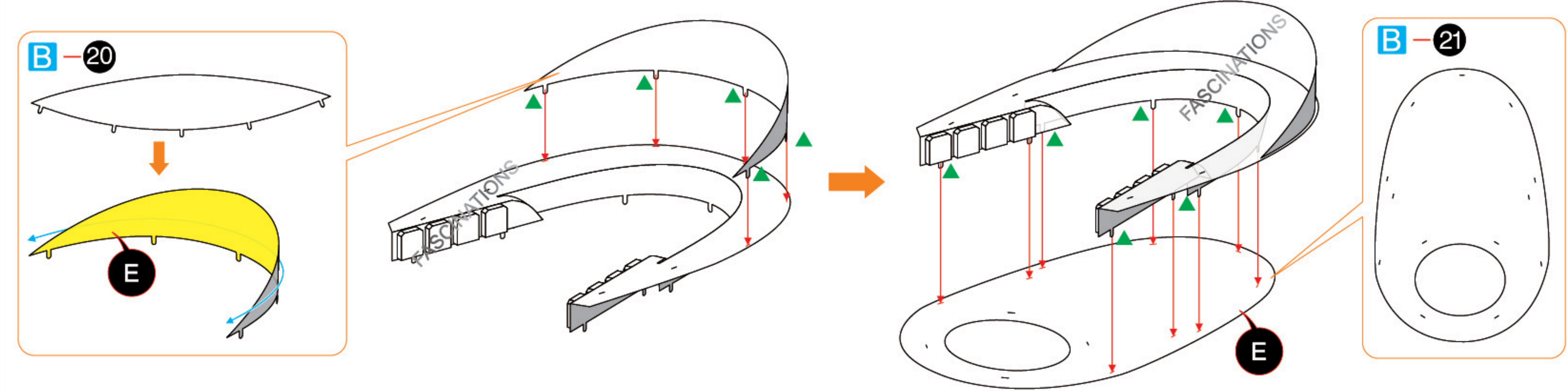
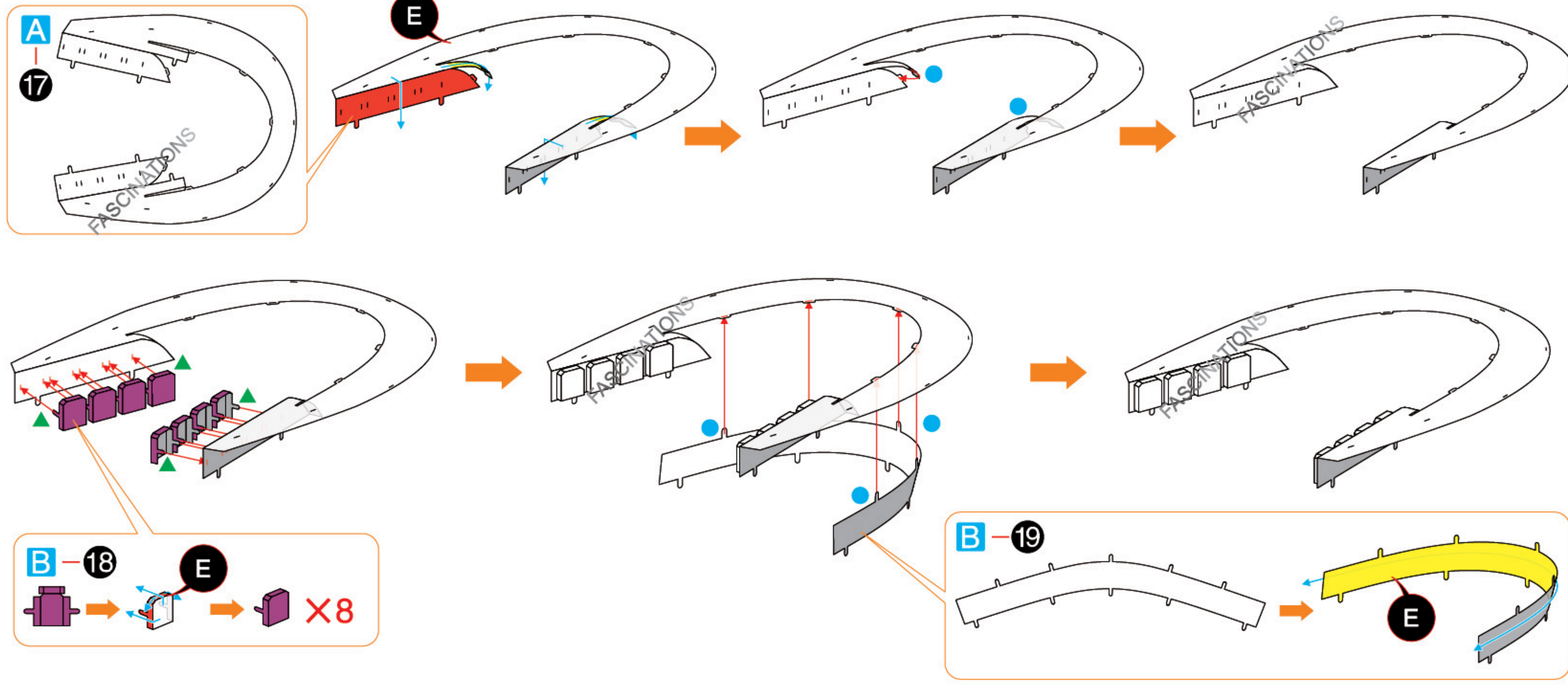
Step 6



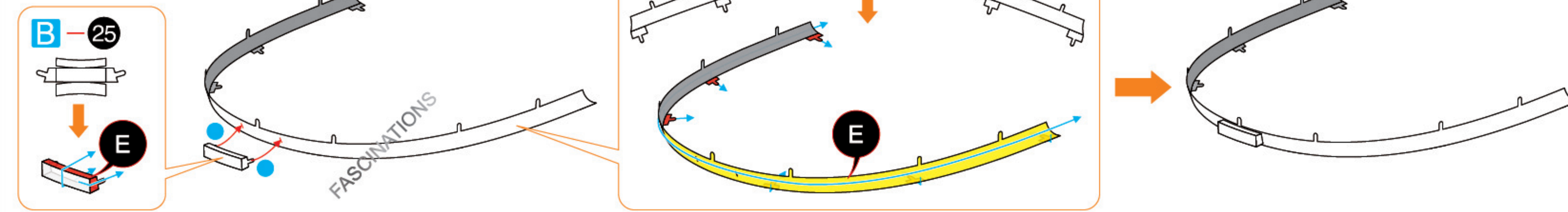
Step 7



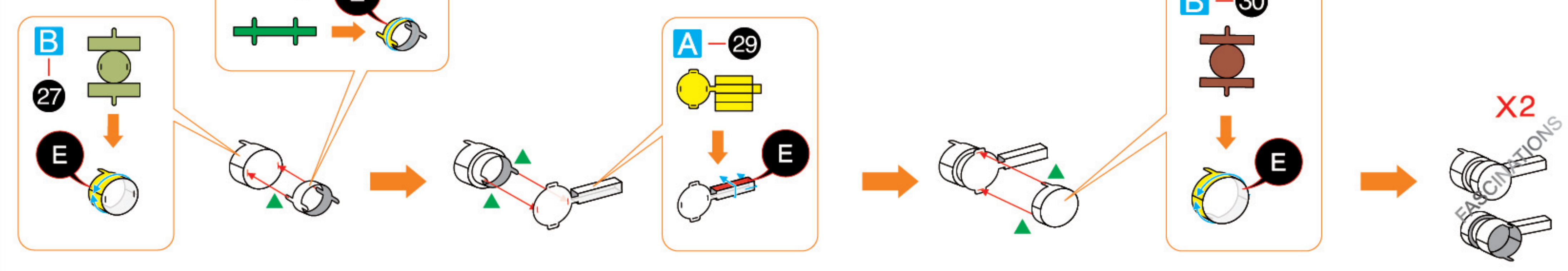
Step 8



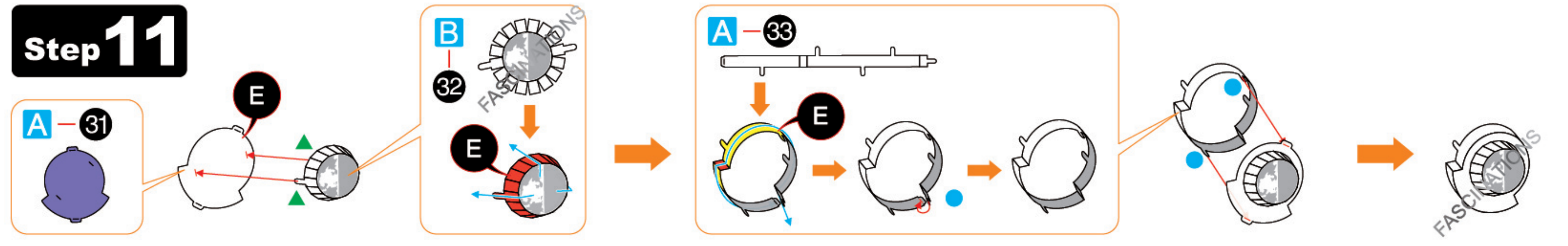
Step 9



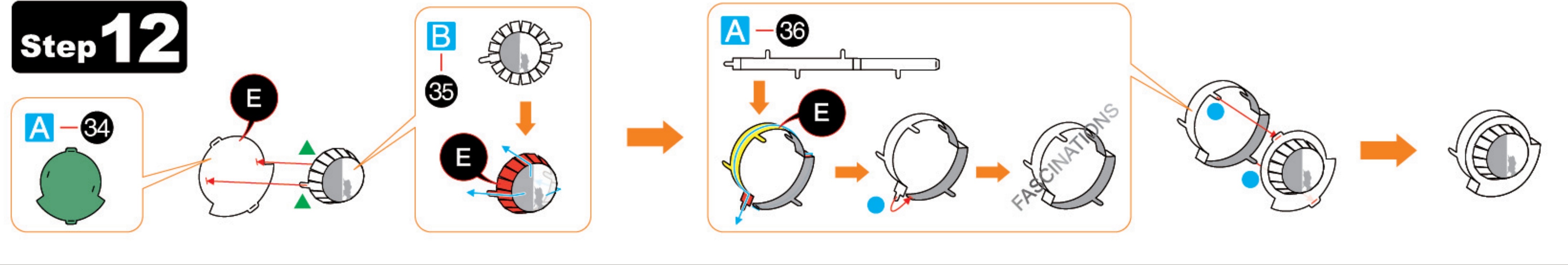
Step 10



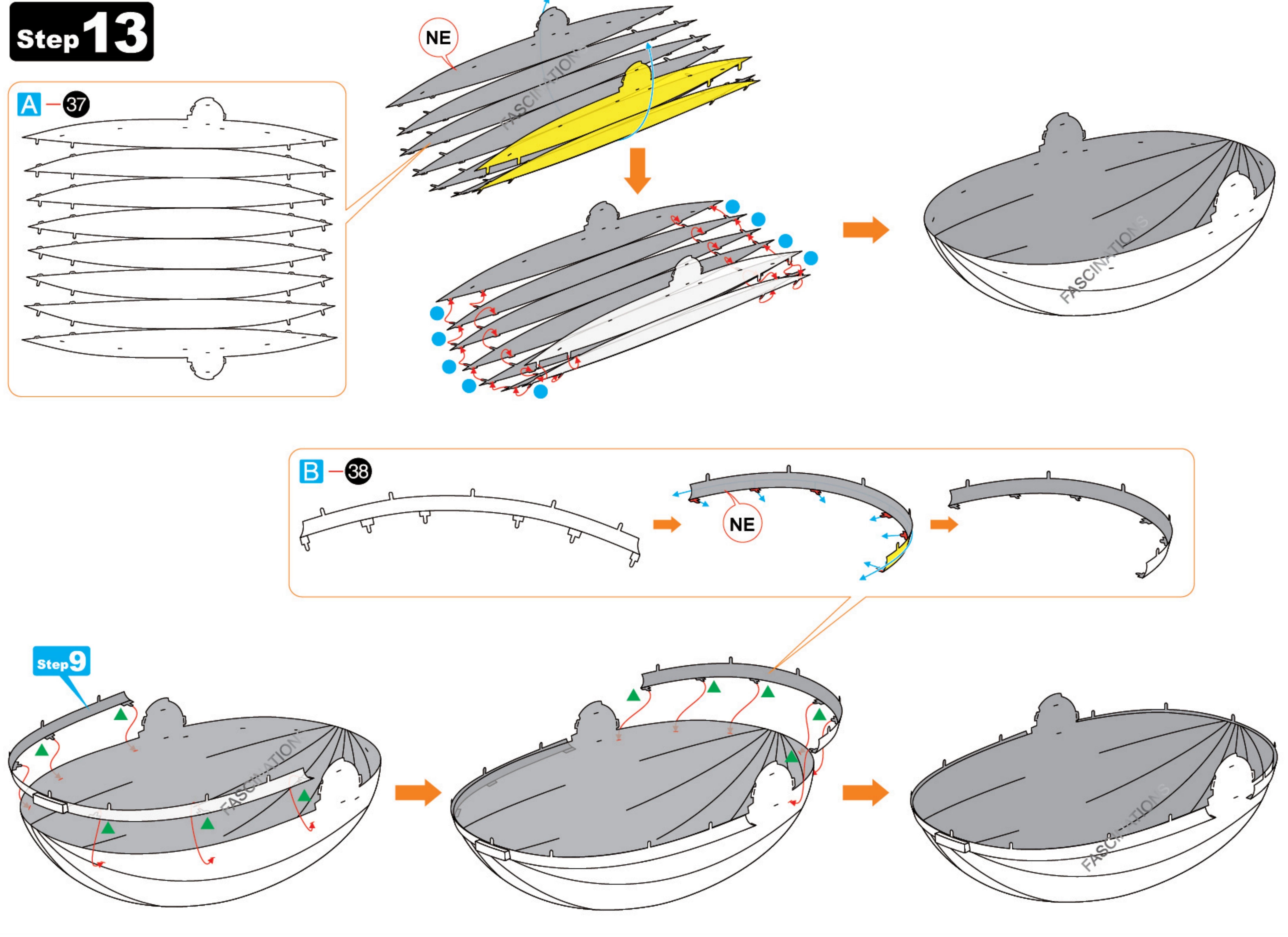
Step 11



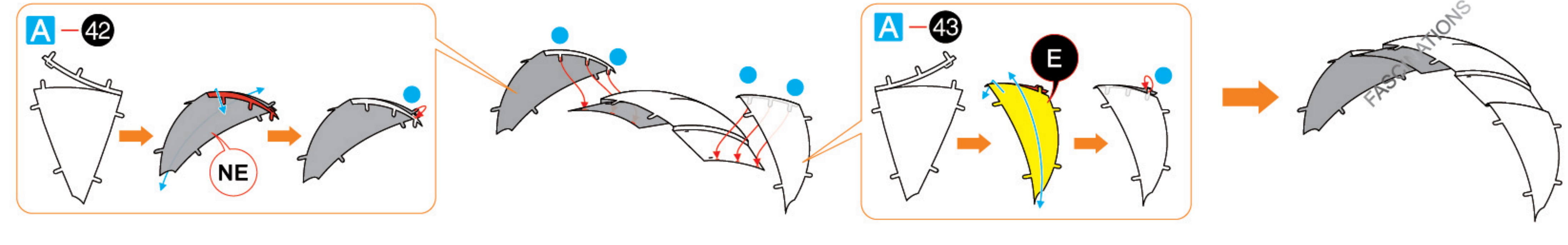
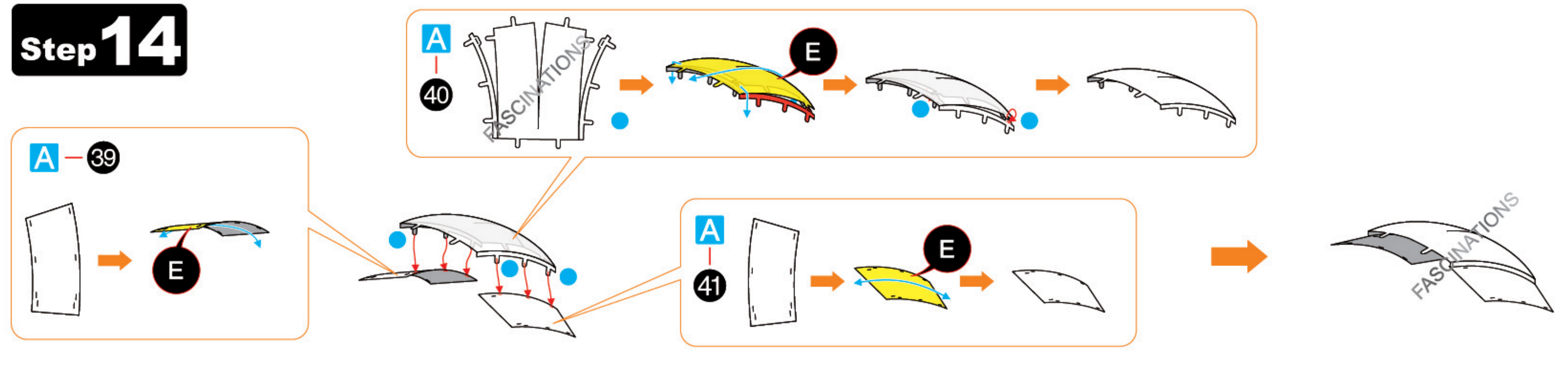
Step 12



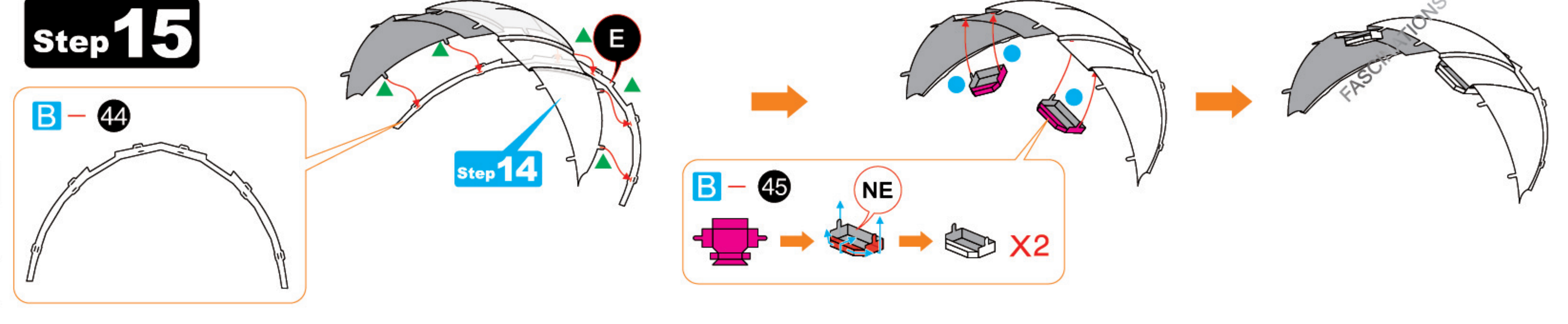
Step 13



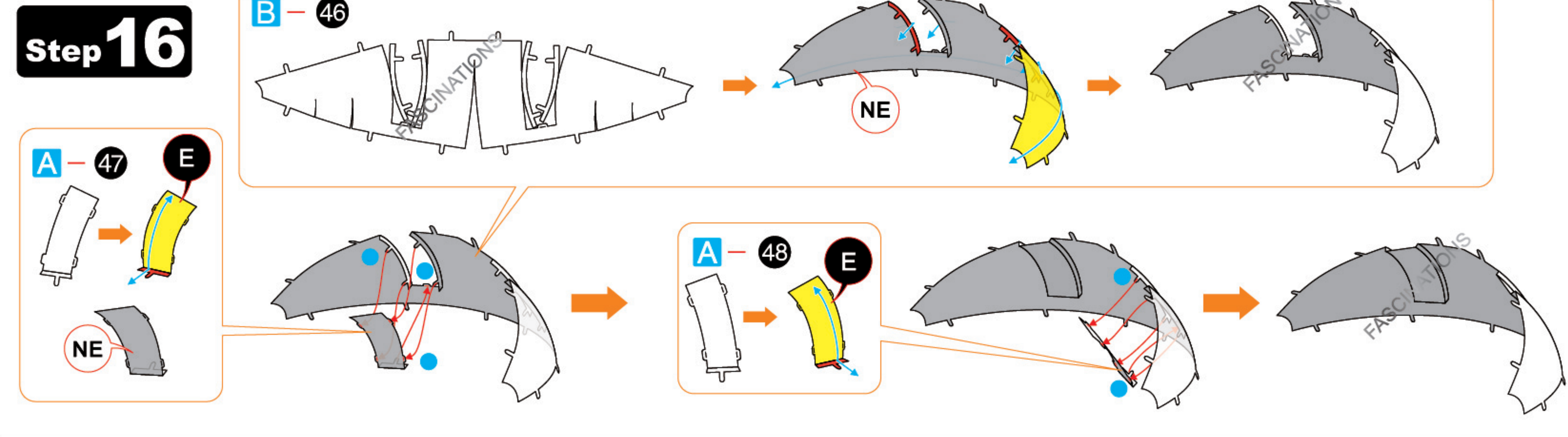
Step 14



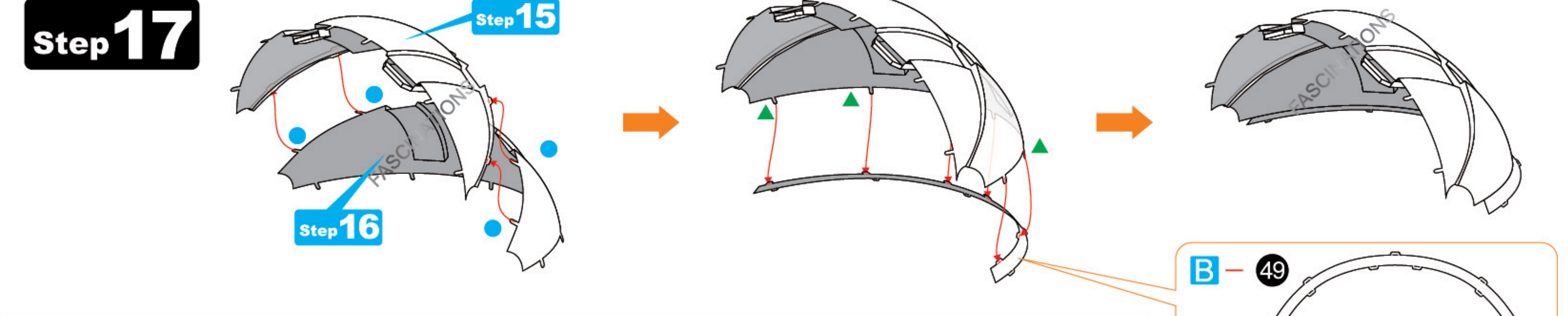
Step 15



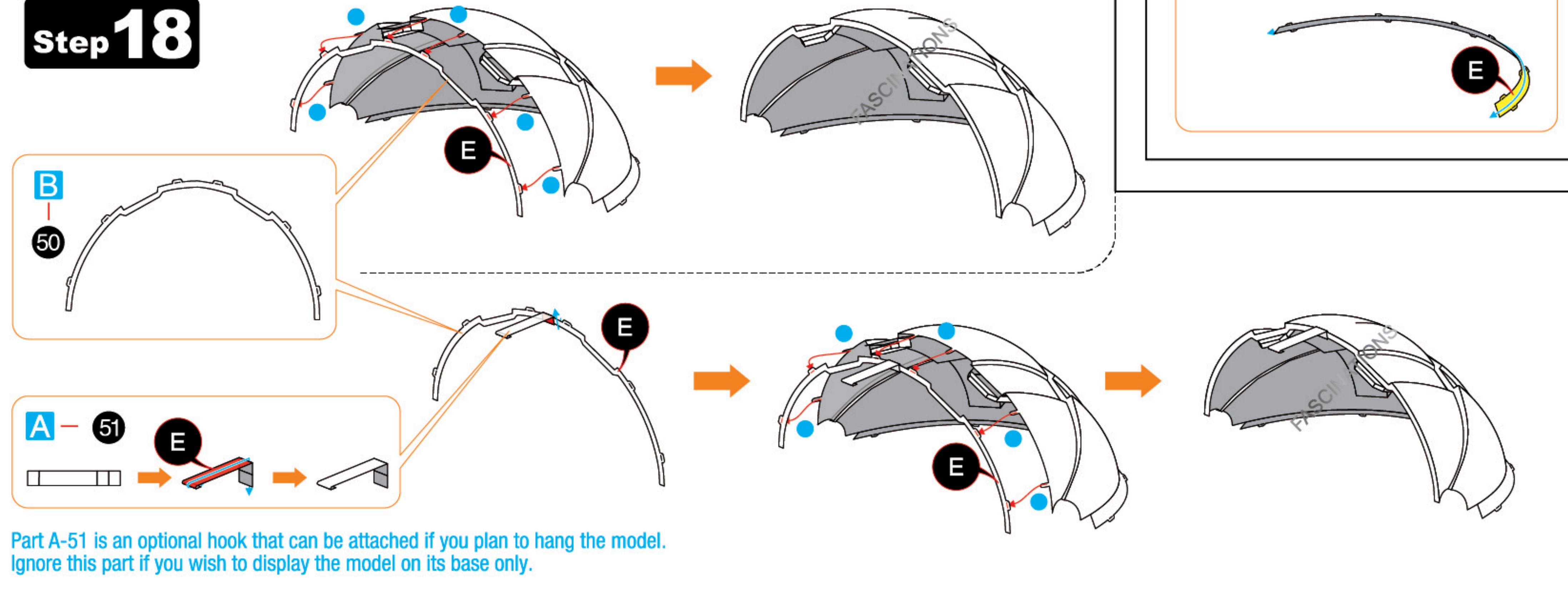
Step 16



Step 17

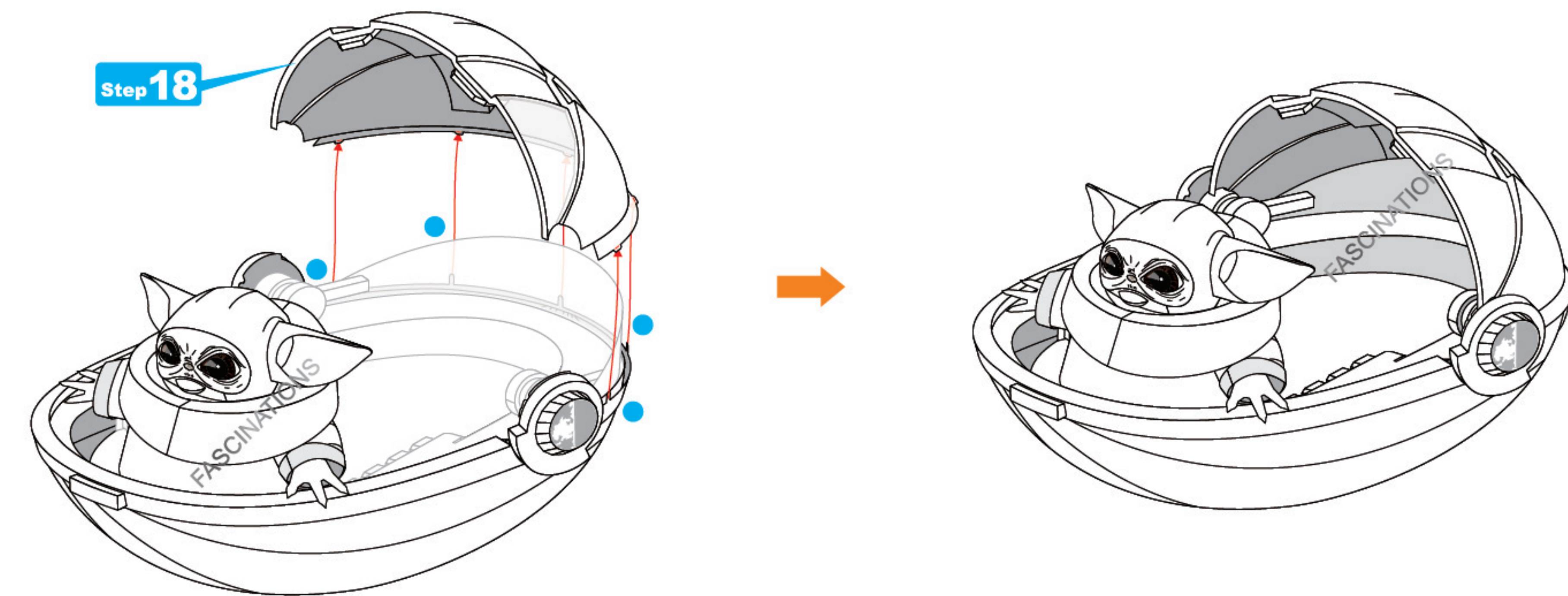
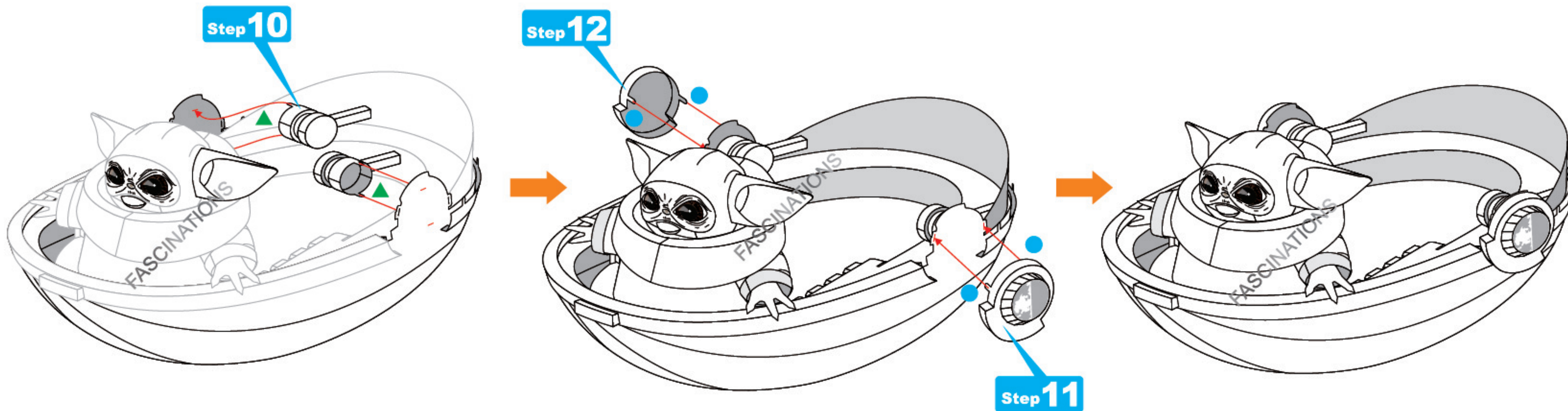
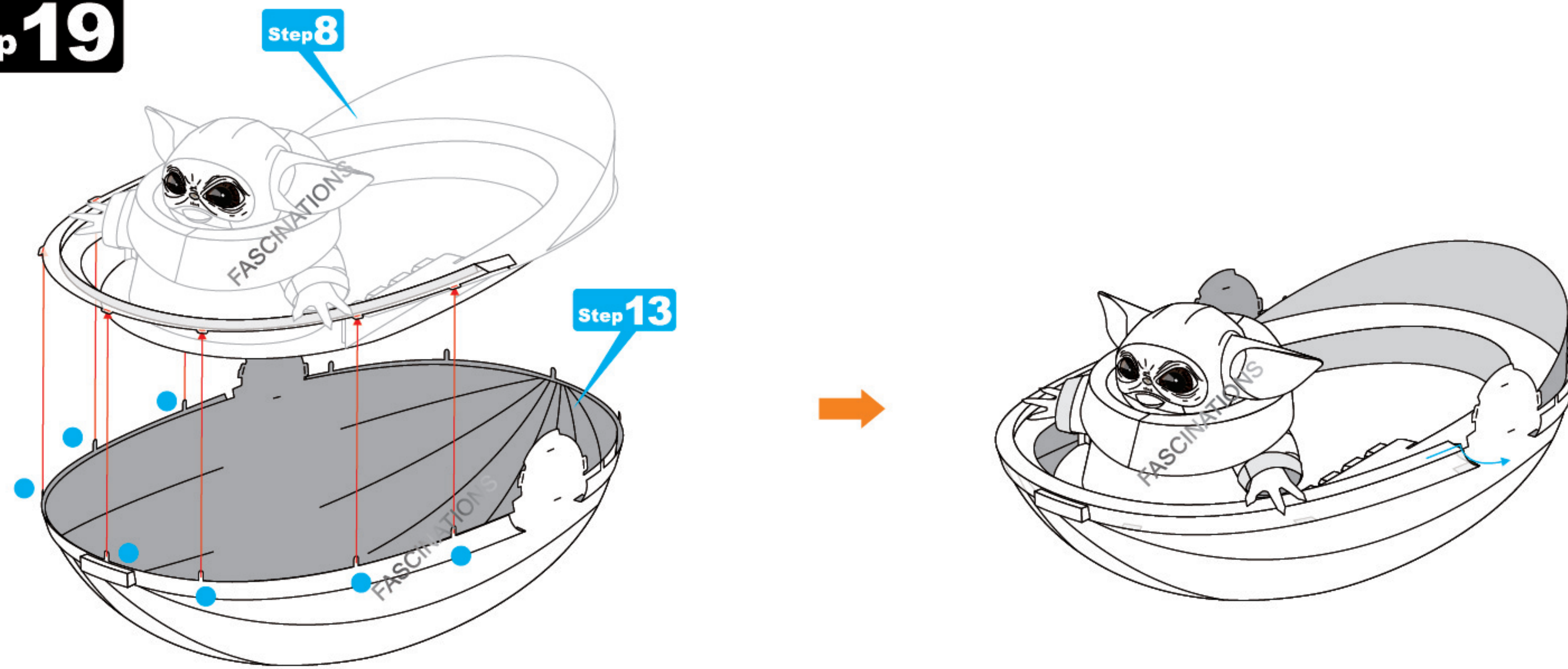


Step 18

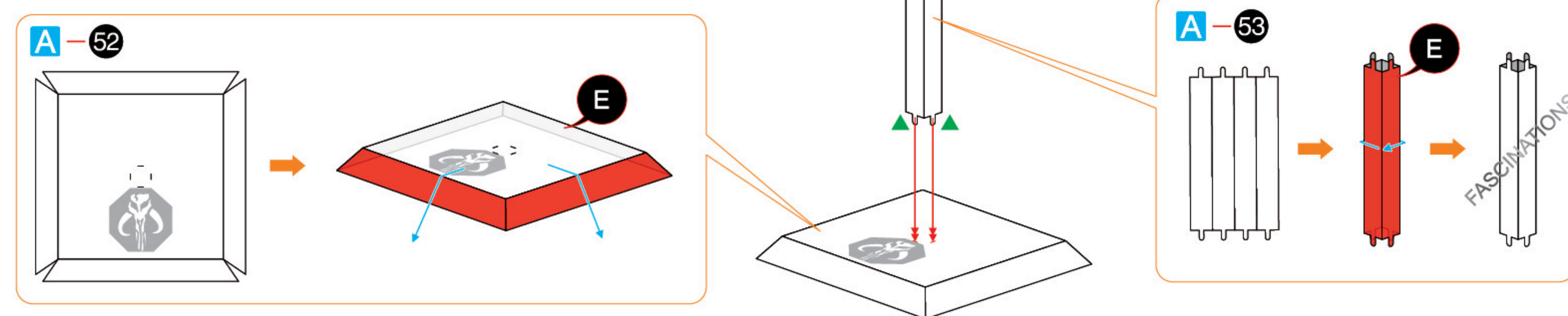


Part A-51 is an optional hook that can be attached if you plan to hang the model. Ignore this part if you wish to display the model on its base only.

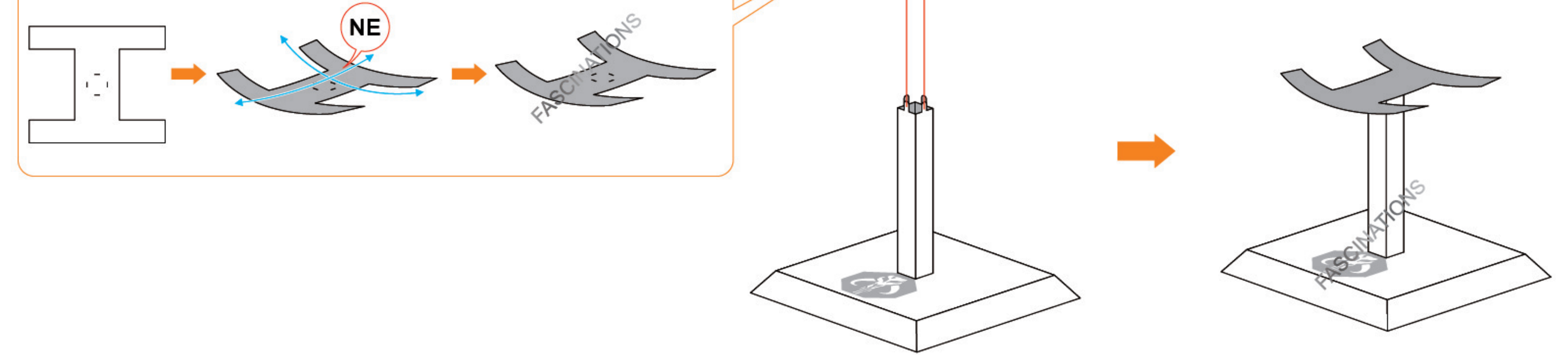
Step 19



Step 20



B-54



Step 21

