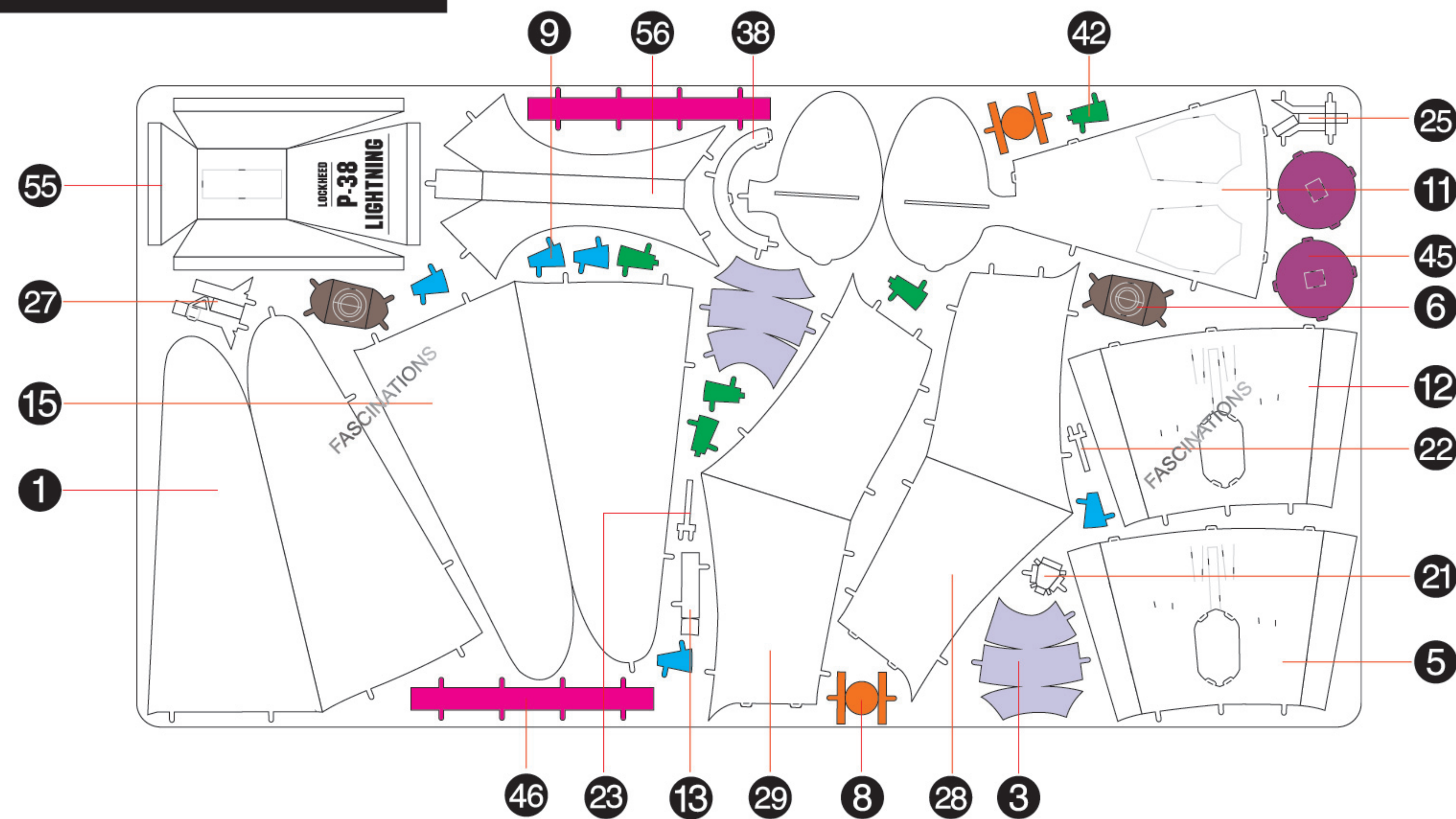




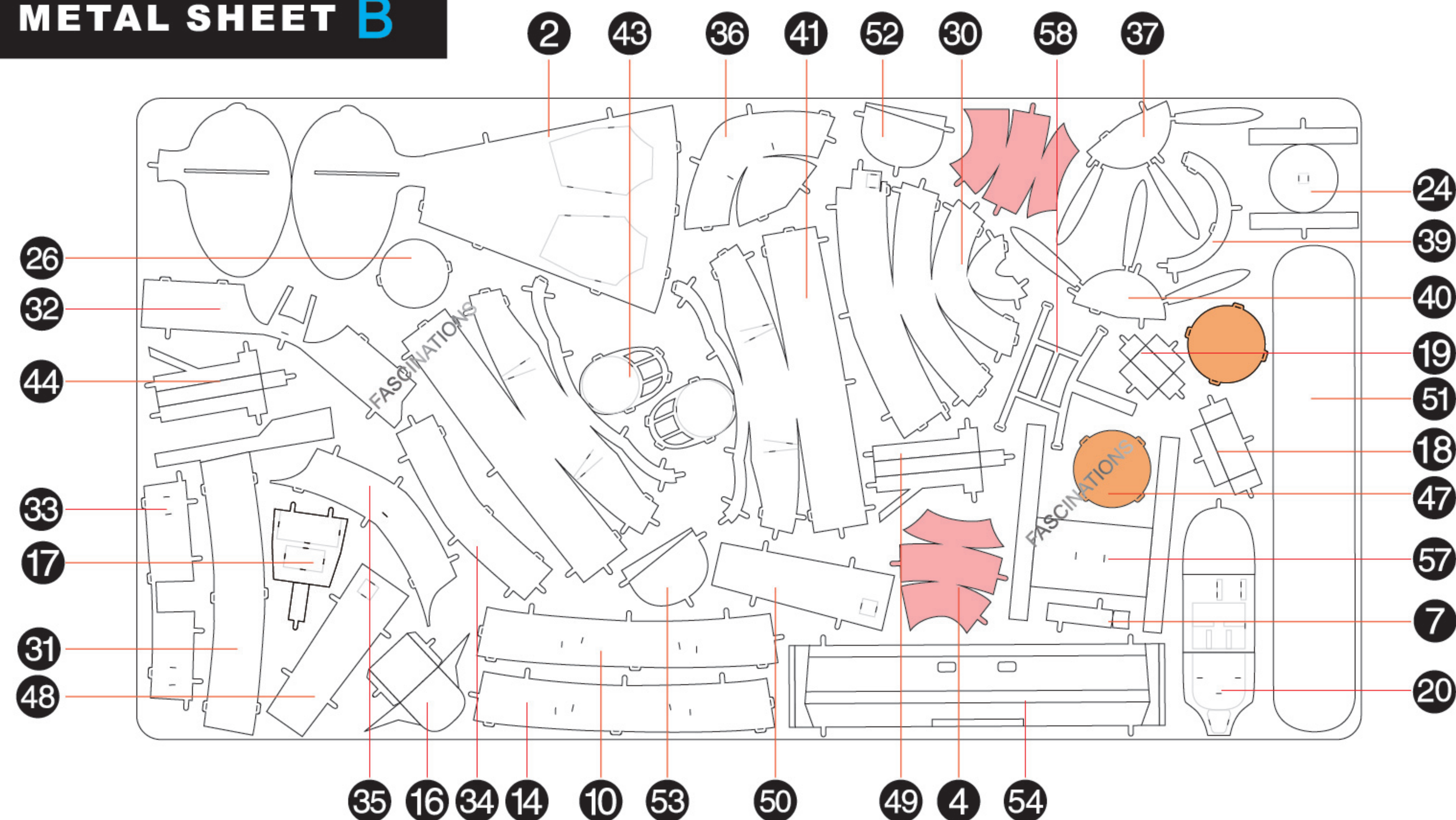
It is highly recommended that you visit  
[www.metalearth.com/360/icx143](http://www.metalearth.com/360/icx143)  
to see the completed model before assembling your own

## METAL SHEET A

Parts with same color are duplicates

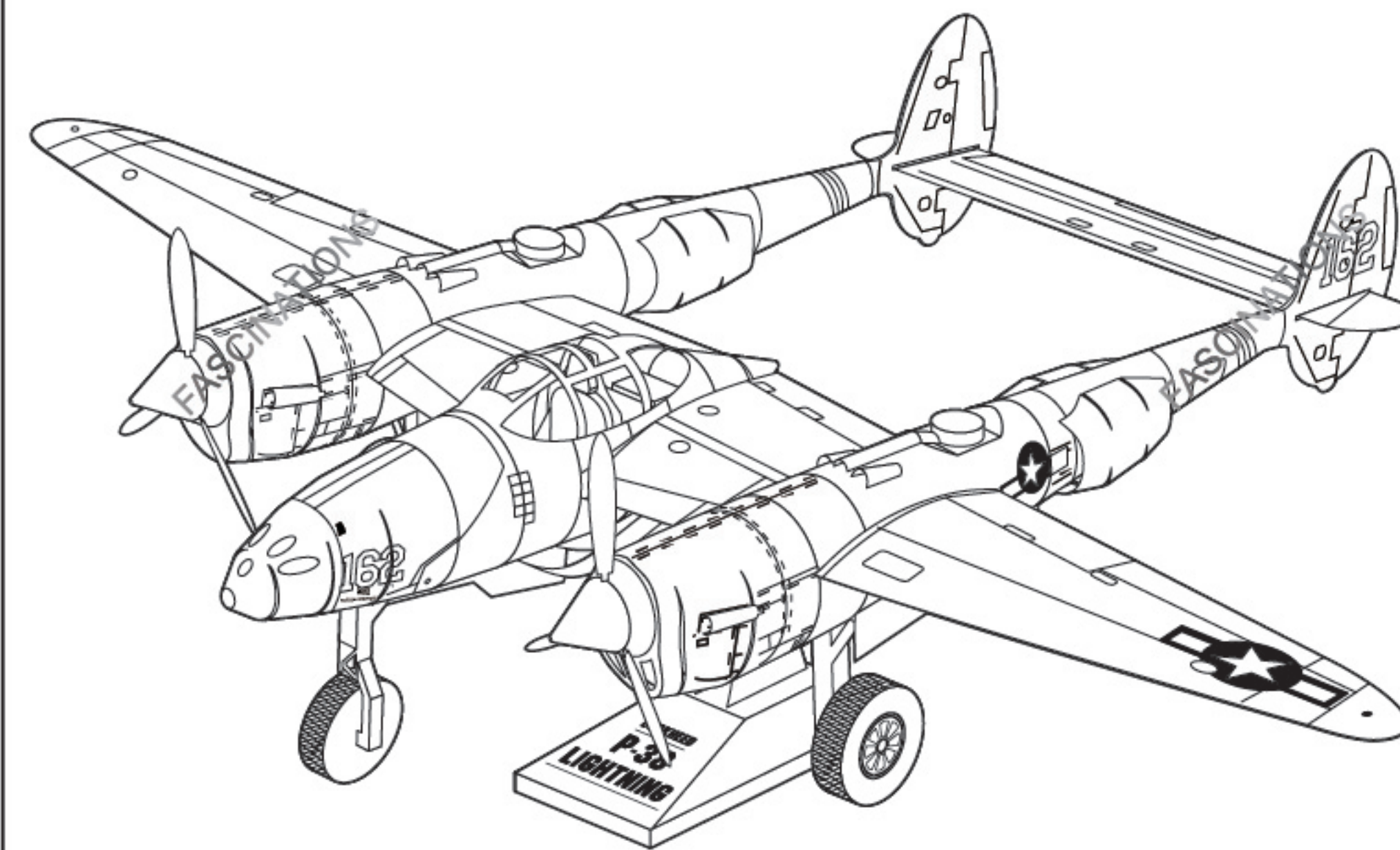


## METAL SHEET B



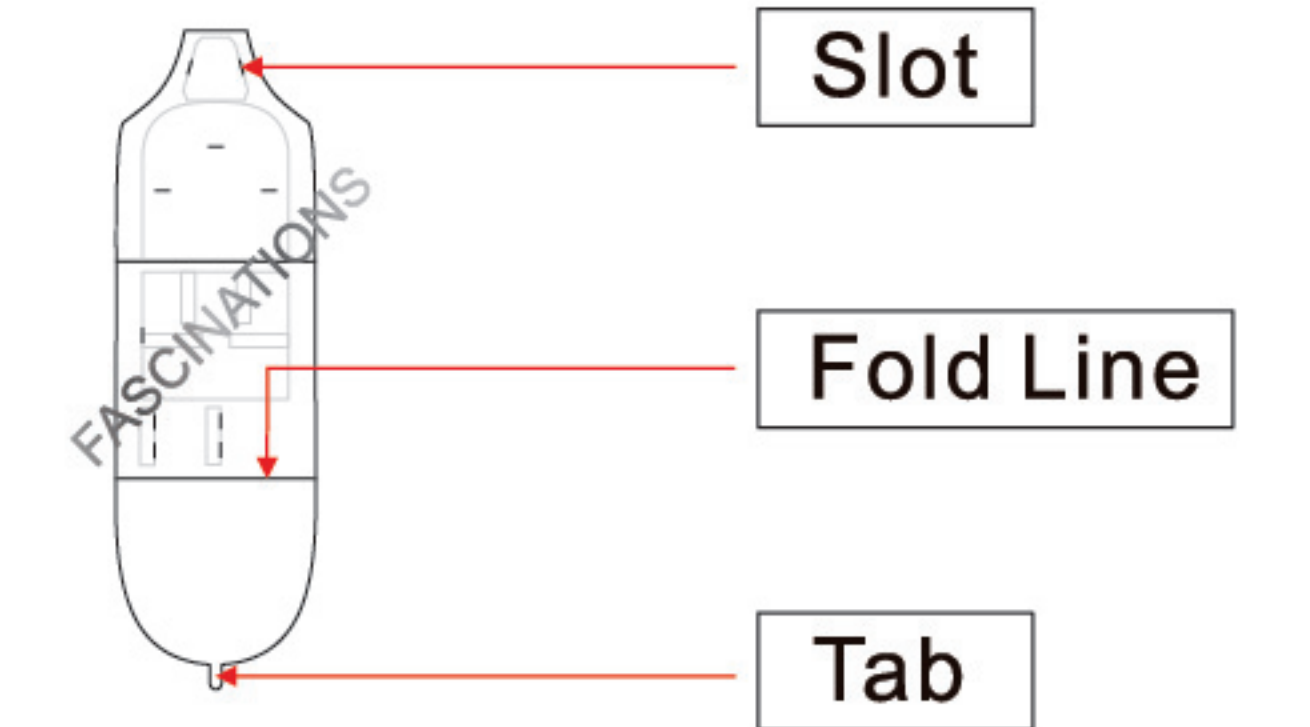
In order to avoid possible injury from sharp edges, please carefully discard the metal sheets after parts have been removed.

## ICX 143



## P-38 LIGHTNING

## TO CREATE THE BEST CONNECTIONS



### Legends:

- E** Engraved side /Glossy side
- NE** Inverse side
- Attention point
- Insert tab and bend 90 degrees
- Insert tab and twist 90 degrees

### Recommended tools:

-Wire cutters: helpful for taking parts from the metal sheets.



-Tweezers or needle nose pliers: helpful for folding parts, bending and twisting tabs.

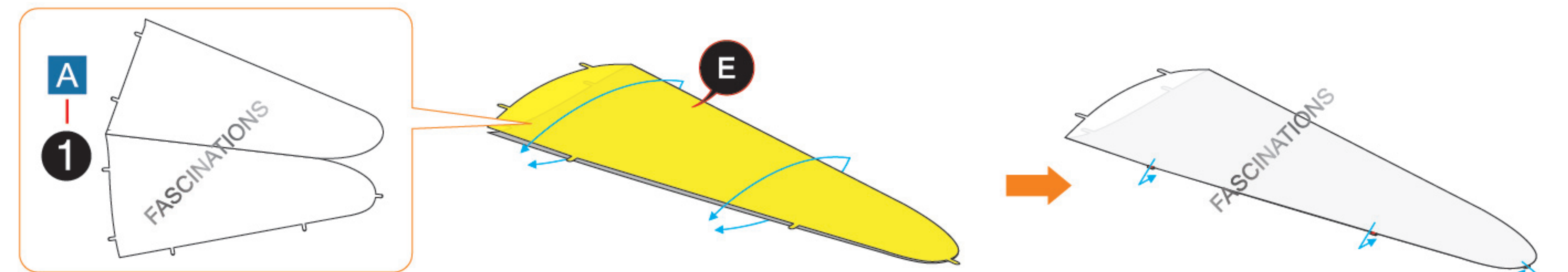


### Assembly tip:

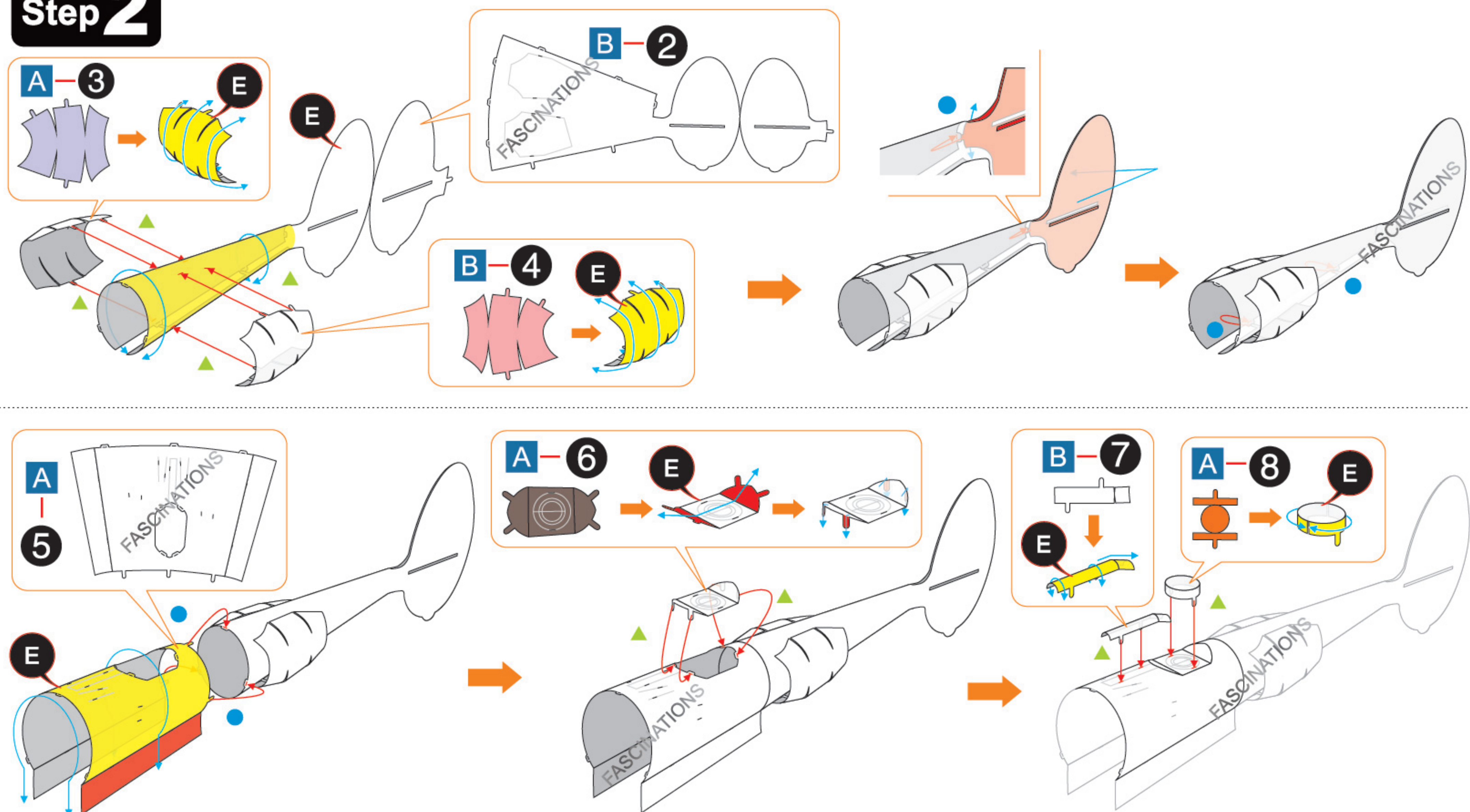
If needed, slightly twist tabs to hold parts together then untwist and bend them down for a nice finish

## ASSEMBLY STEPS

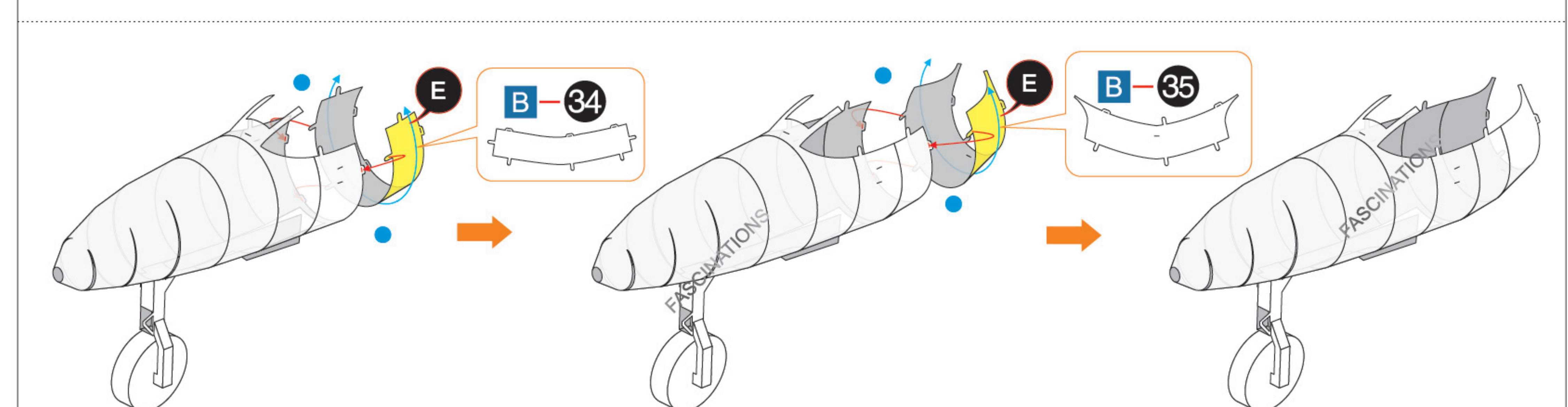
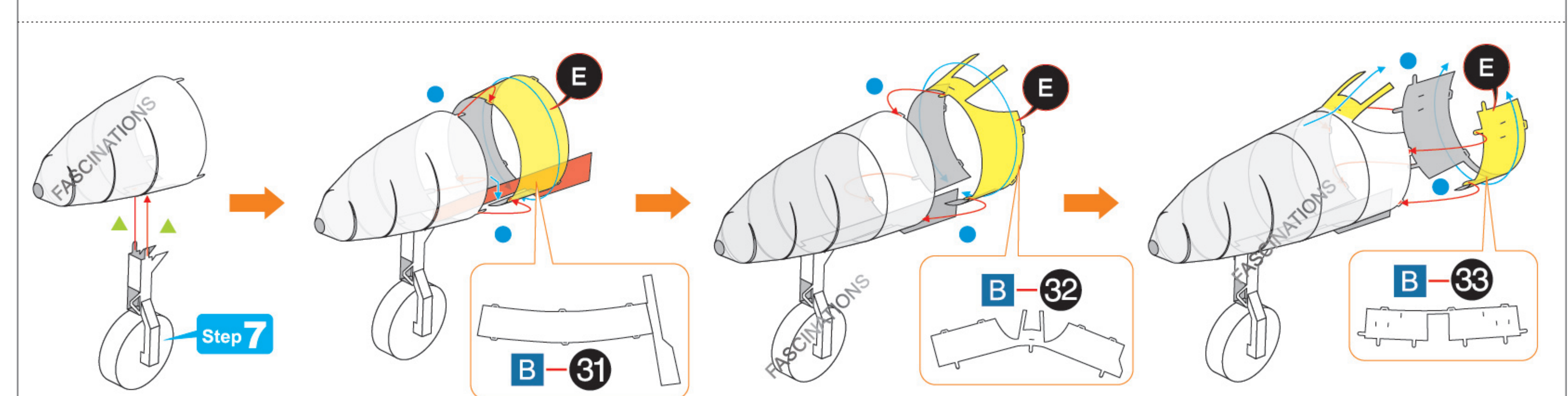
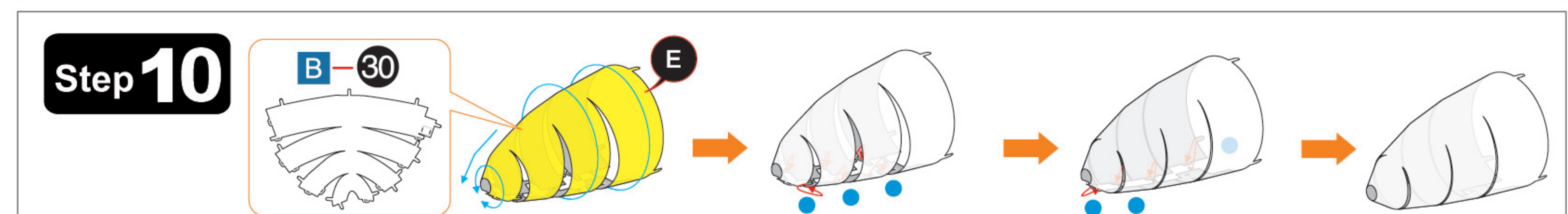
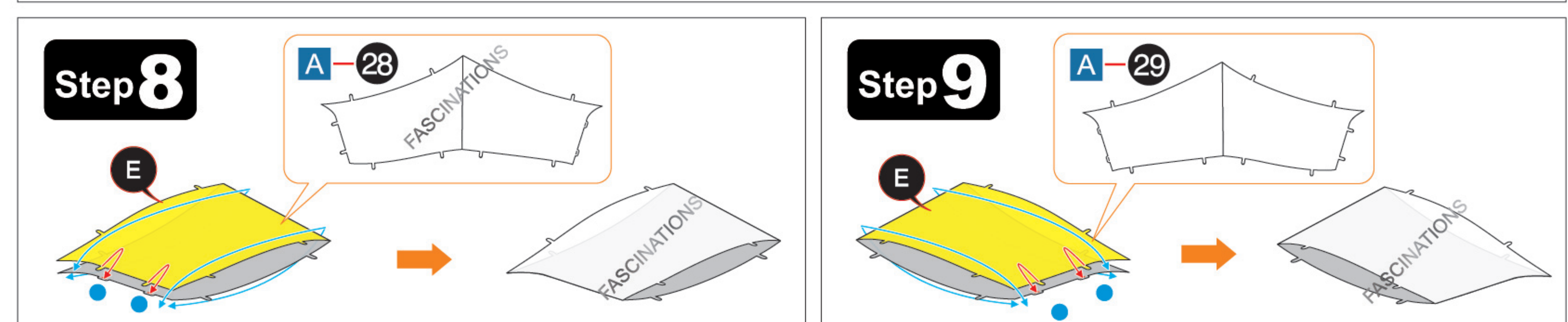
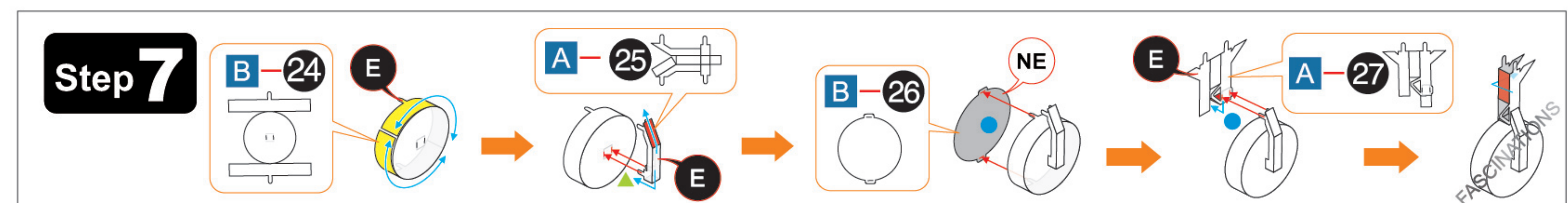
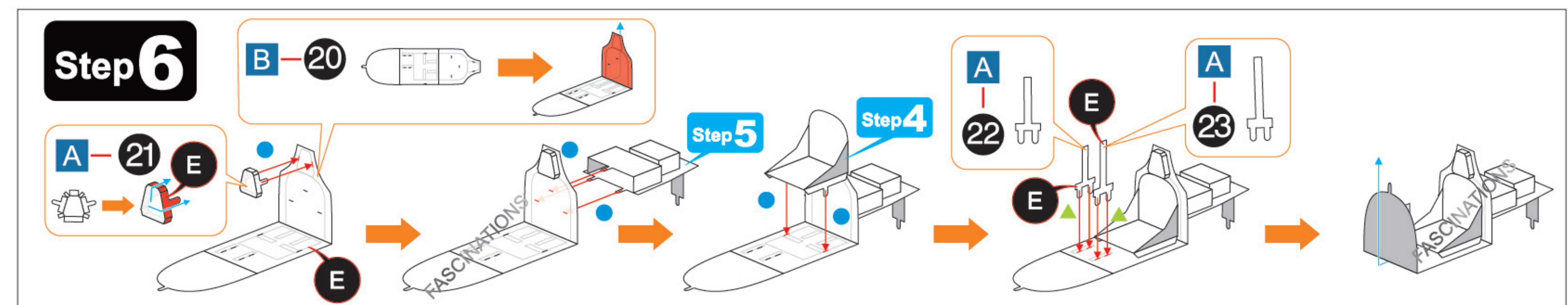
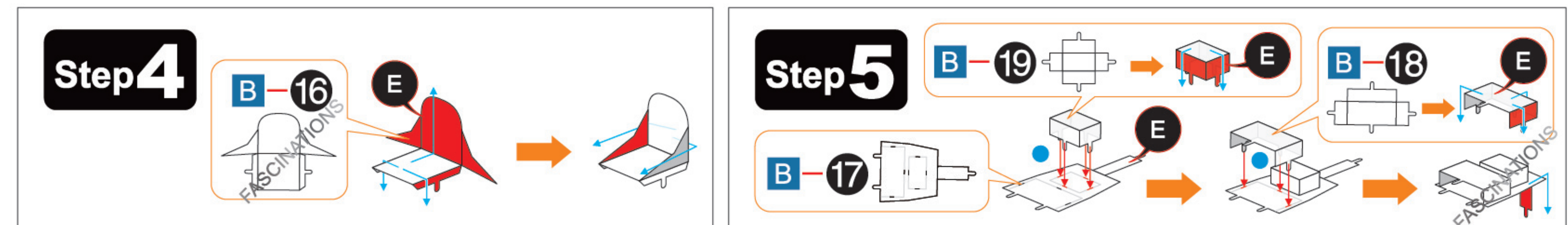
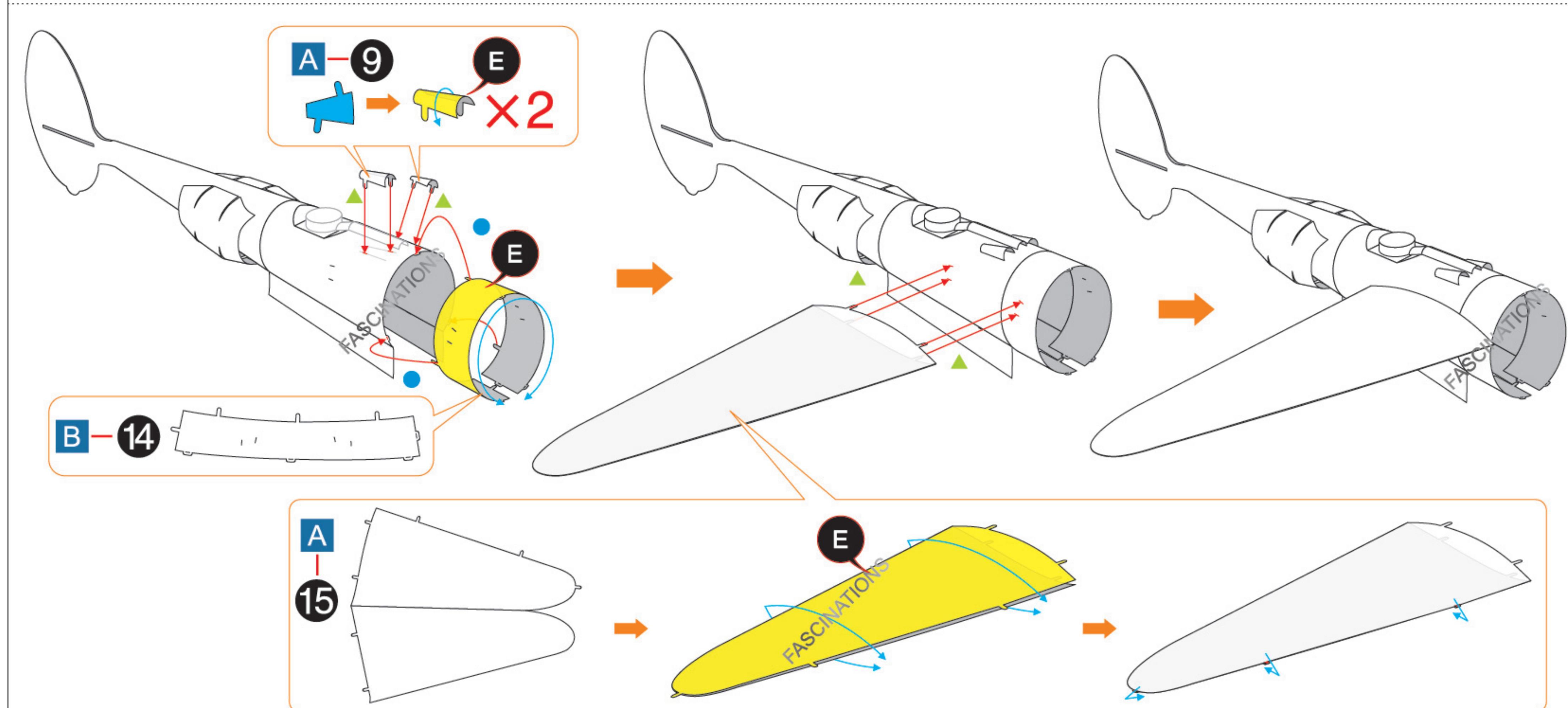
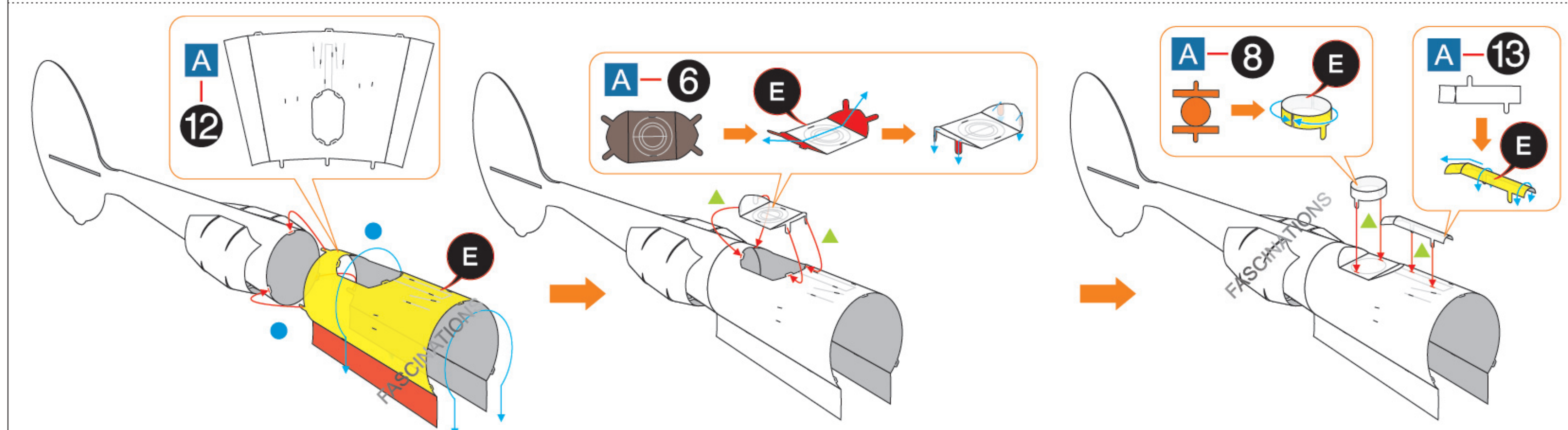
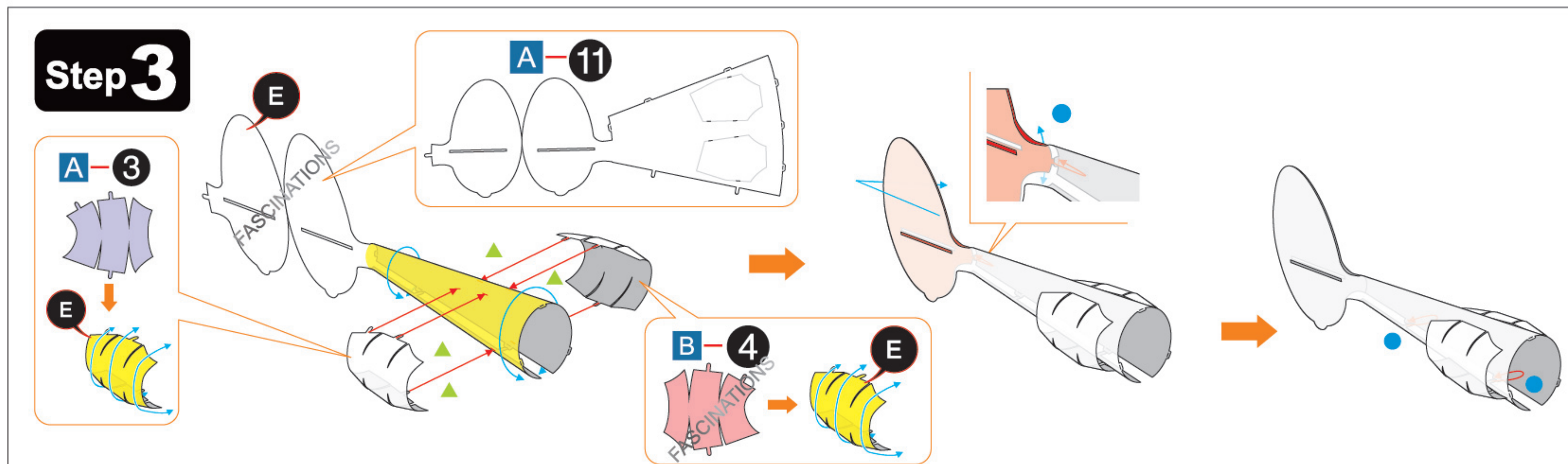
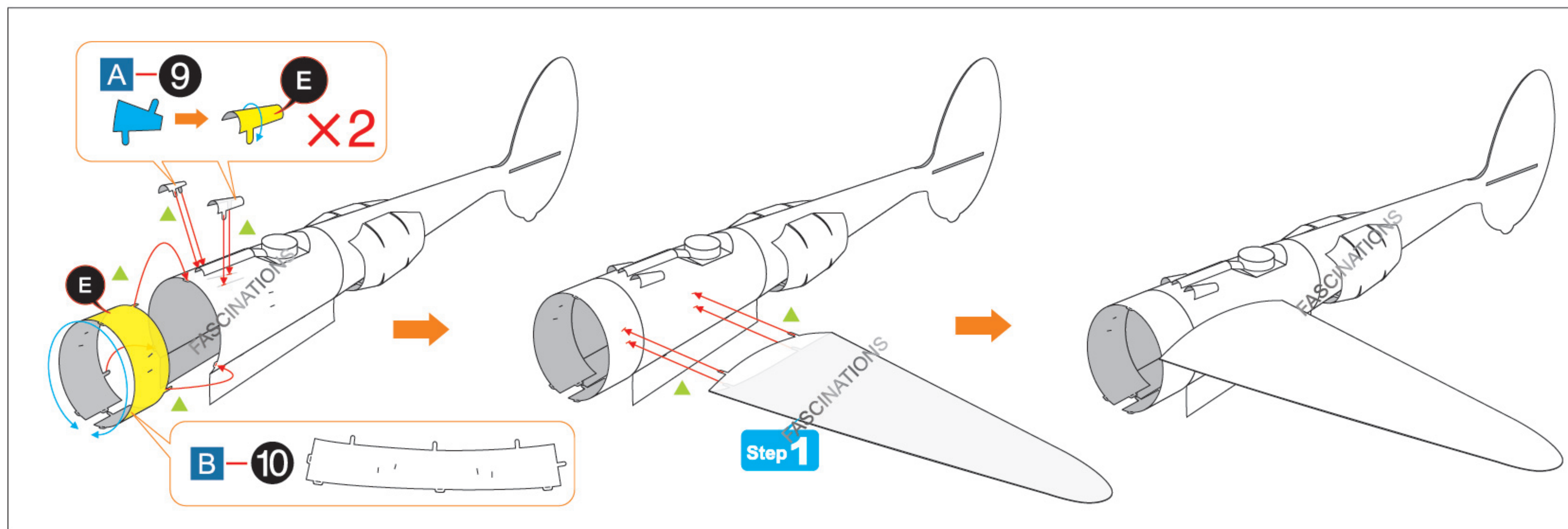
### Step 1



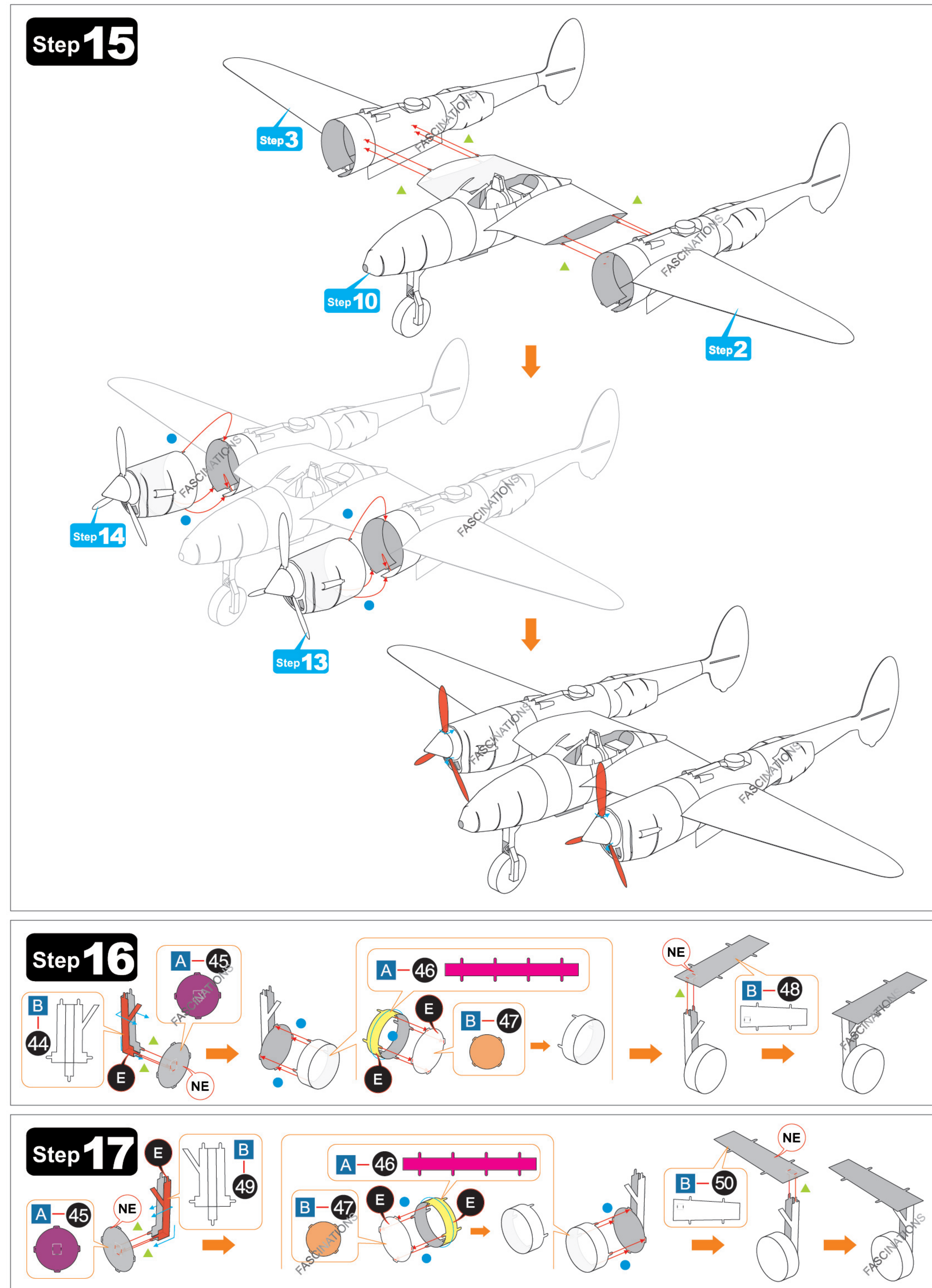
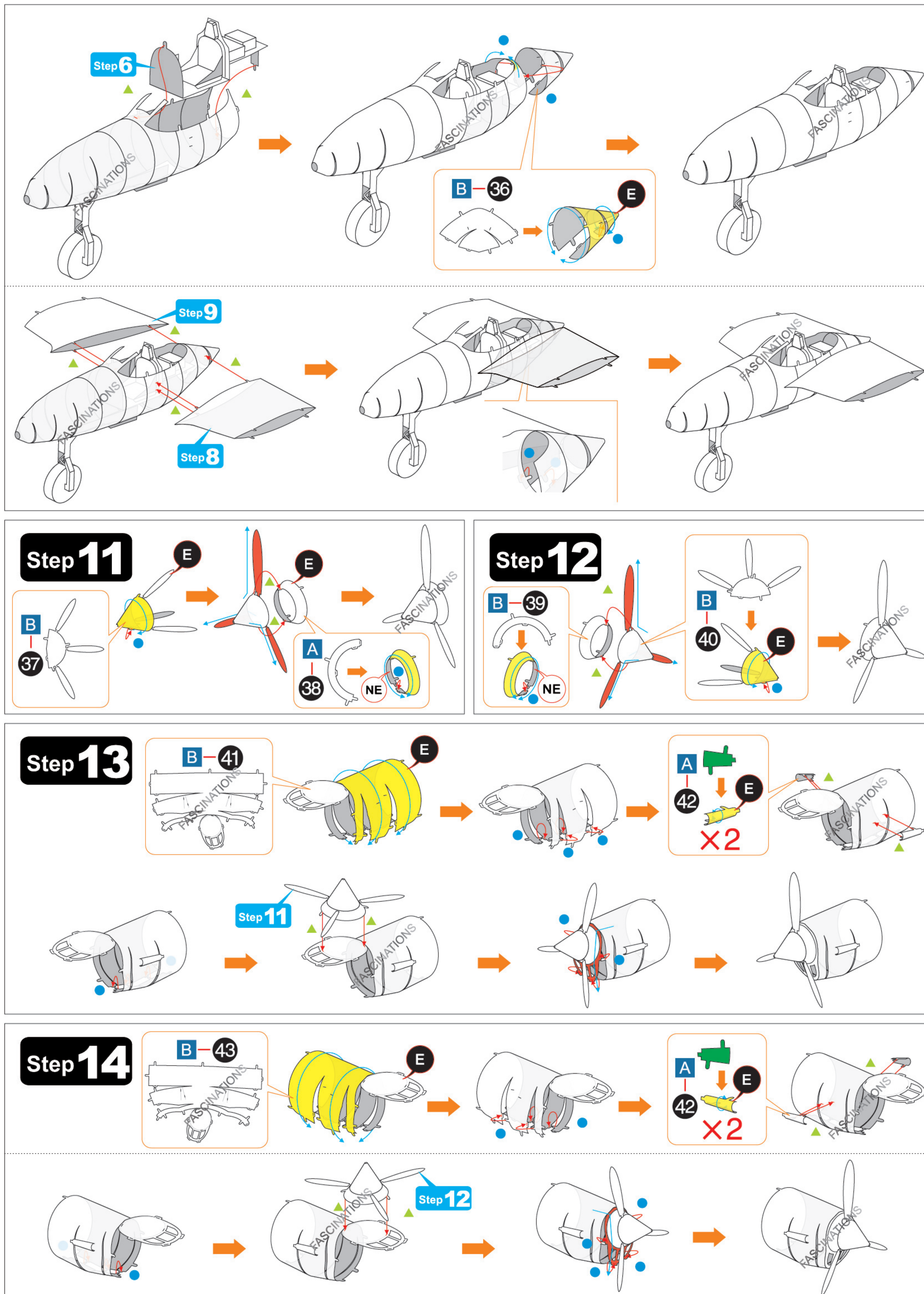
### Step 2





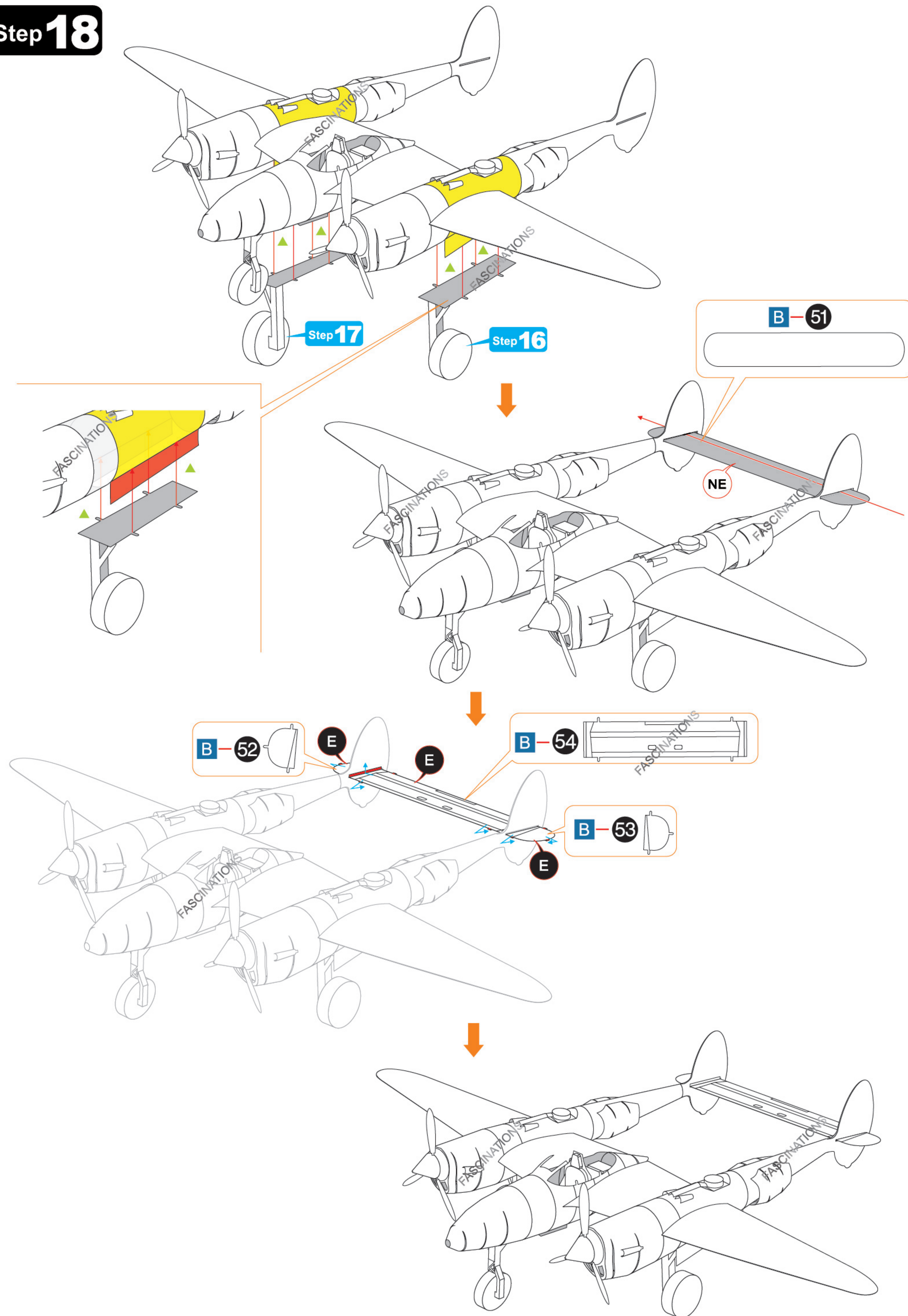




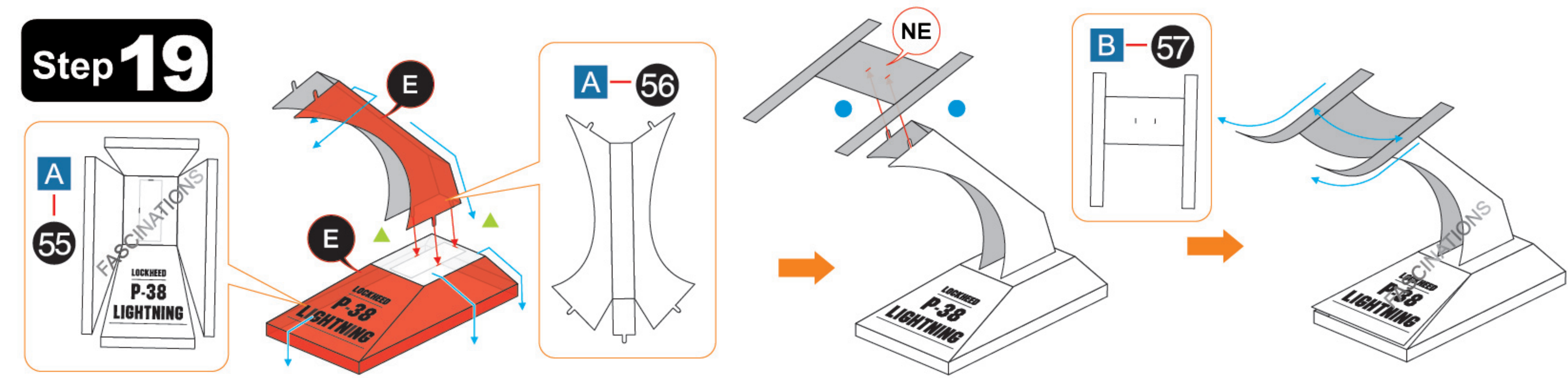




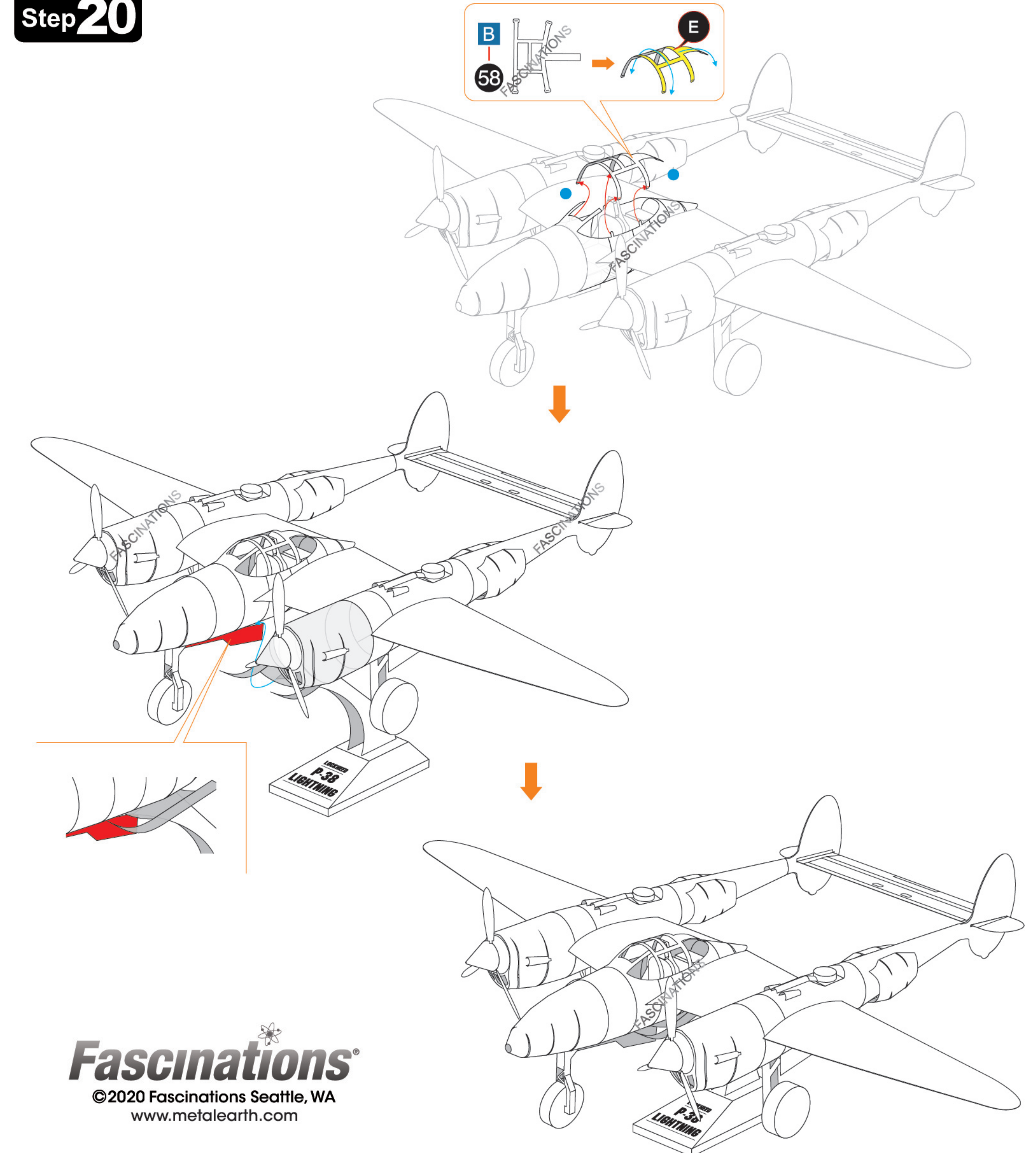
## Step 18



## Step 19



## Step 20



**Fascinations®**  
©2020 Fascinations Seattle, WA  
www.metalearth.com