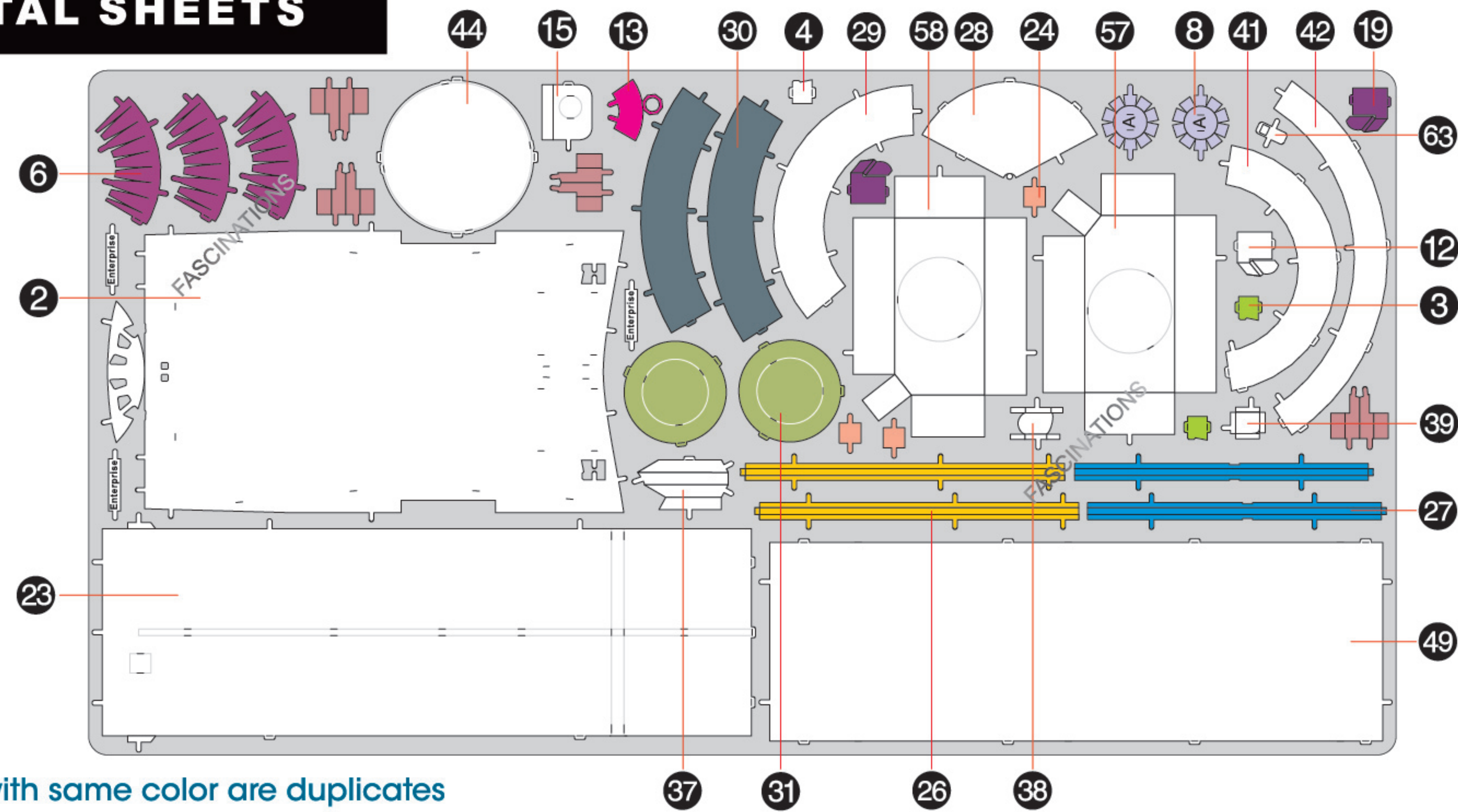


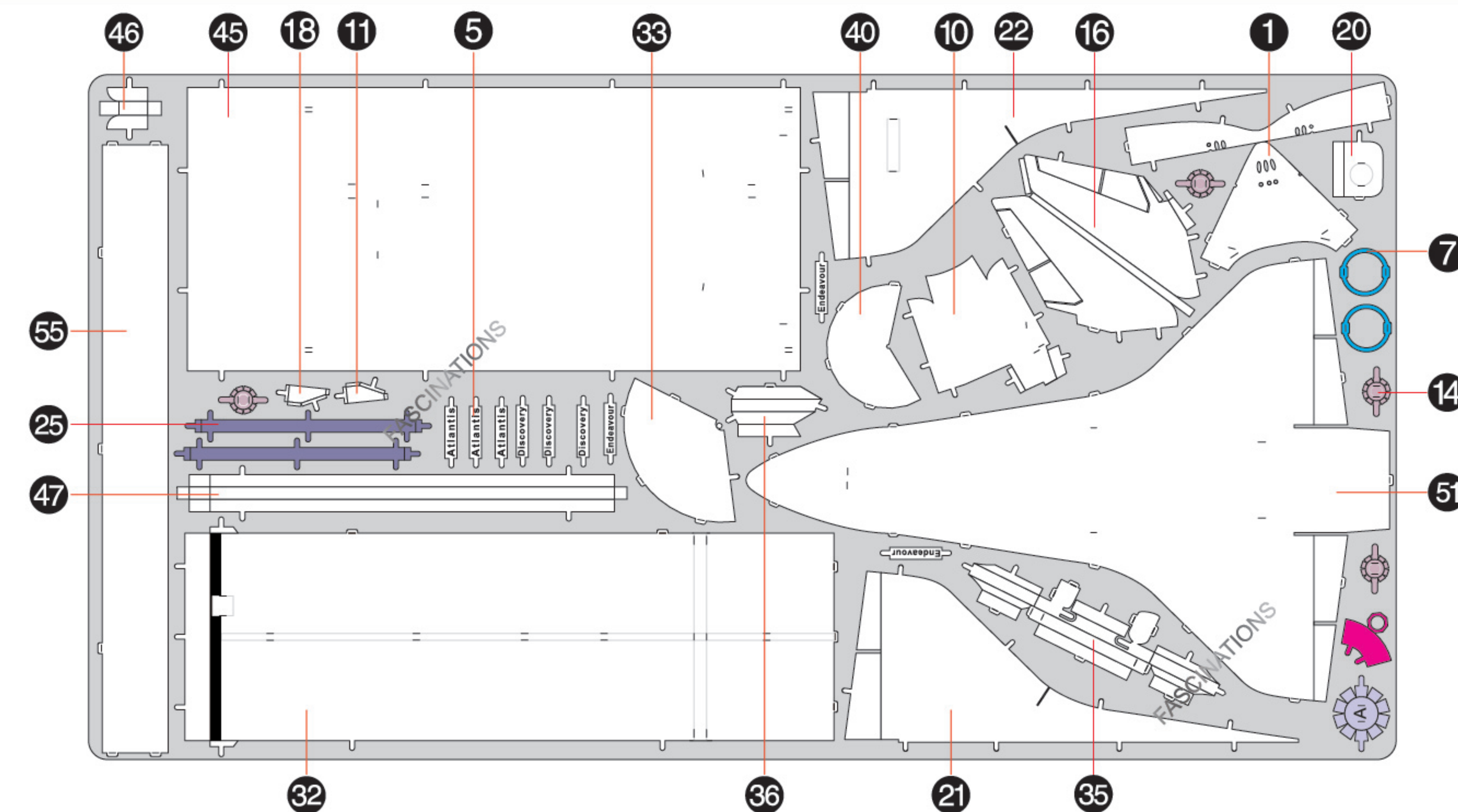
## METAL SHEETS

A

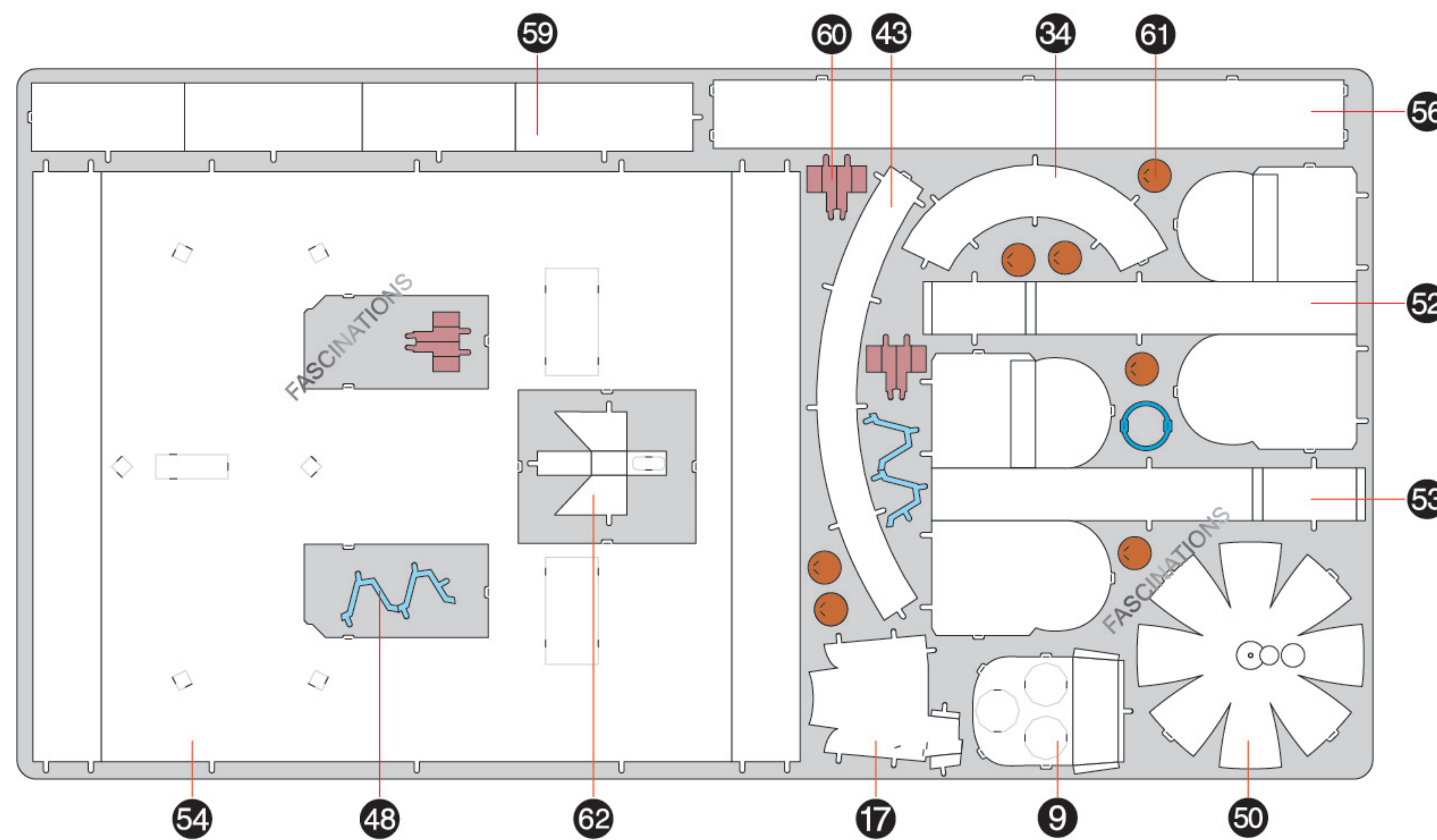


Parts with same color are duplicates

B



C



# Metal Earth

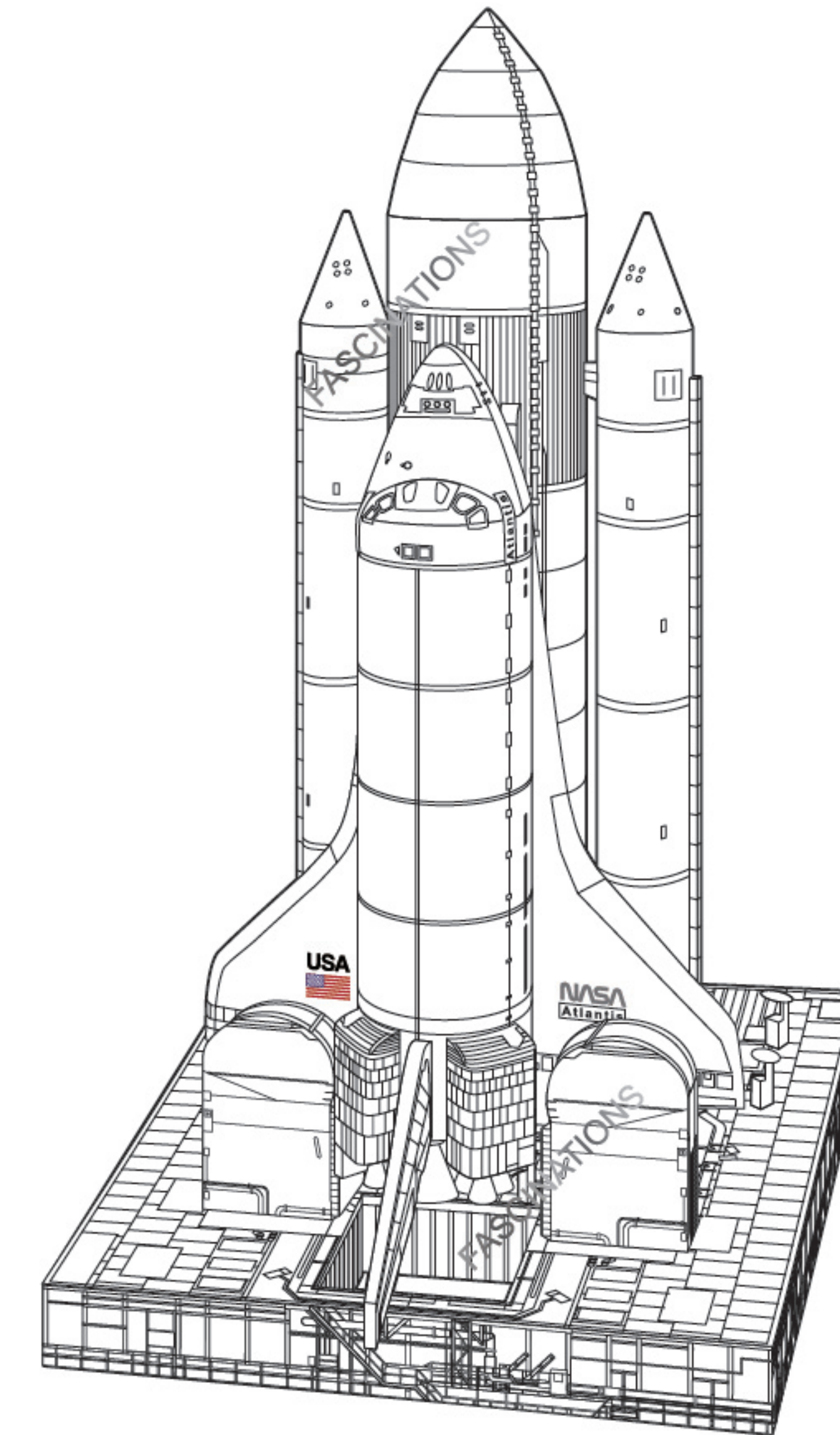
360°  
view



It is highly recommended that you visit [www.metalearth.com/360/icx227](http://www.metalearth.com/360/icx227) to see the completed model before assembling your own

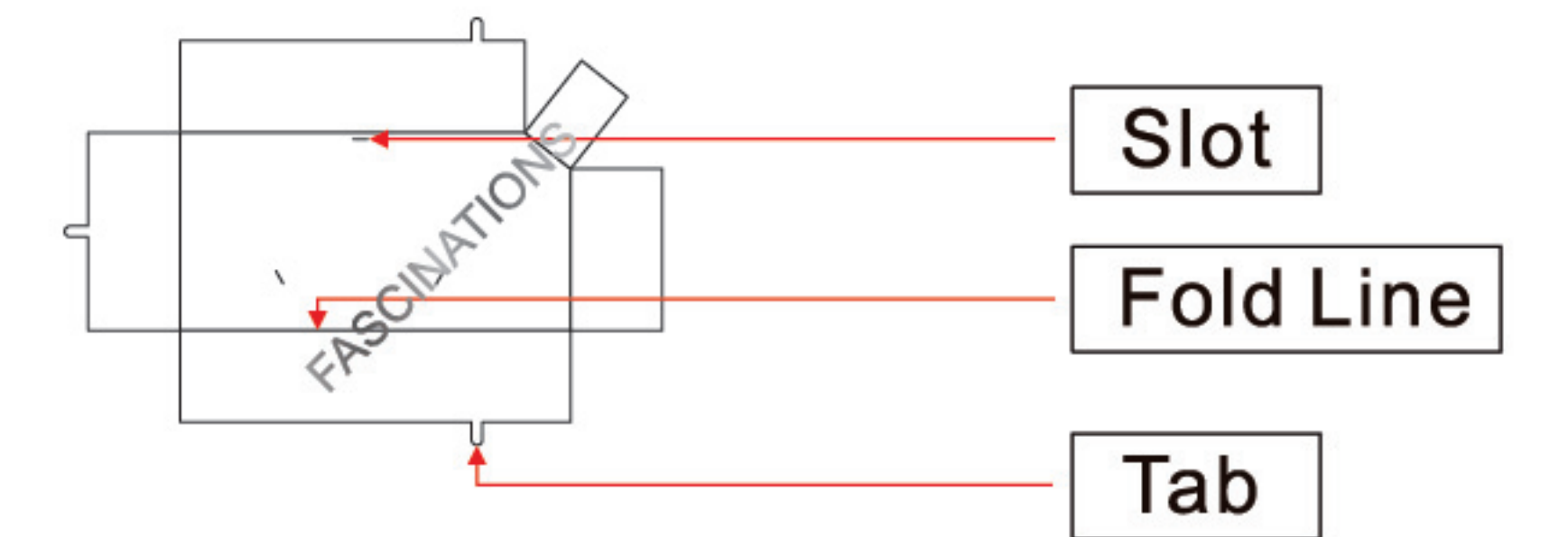
## Premium Series

### ICX227



## SPACE SHUTTLE LAUNCH KIT

## TO CREATE THE BEST CONNECTIONS

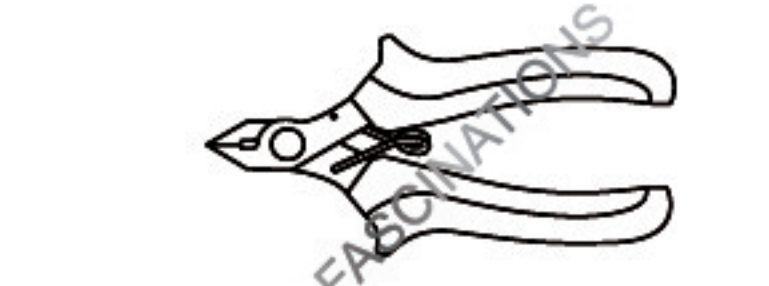


### Legends:

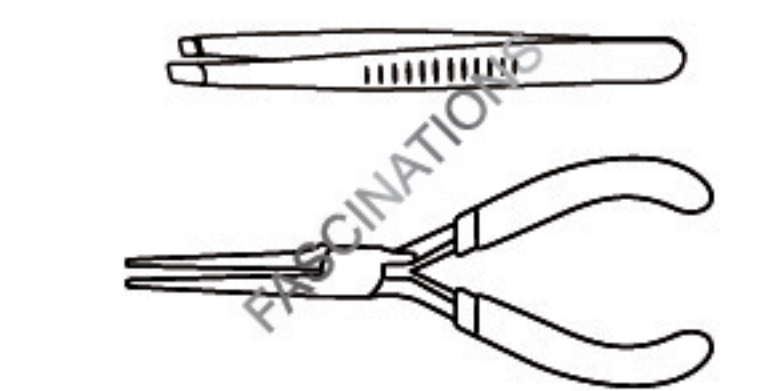
- E** Engraved/Color side
- NE** Non-engraved/Silver side
- Attention point
- Insert tab and bend 90 degrees
- Insert tab and twist 90 degrees

### Recommended tools:

-Wire cutters: helpful for taking parts from the metal sheets.



-Tweezers or needle nose pliers: helpful for folding parts, bending and twisting tabs.

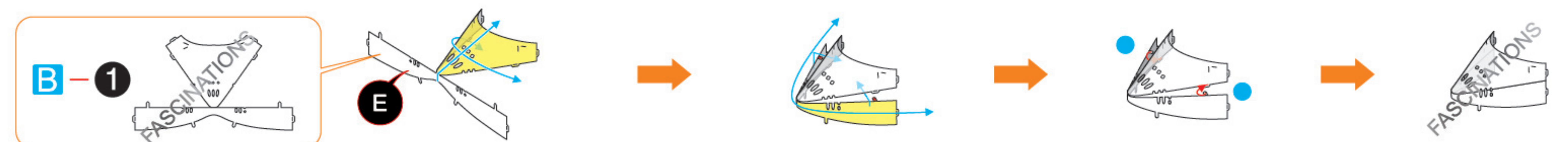


### Assembly tip:

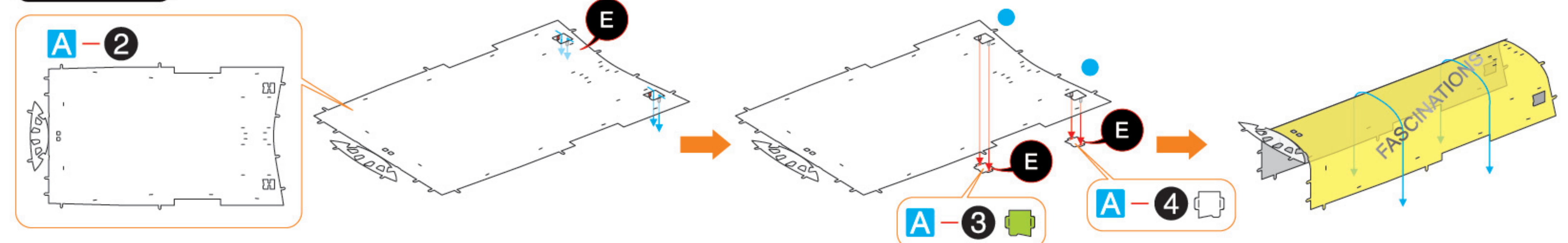
If needed, slightly twist tabs to hold parts together then untwist and bend them down for a nice finish

## ASSEMBLY STEPS

### Step 1

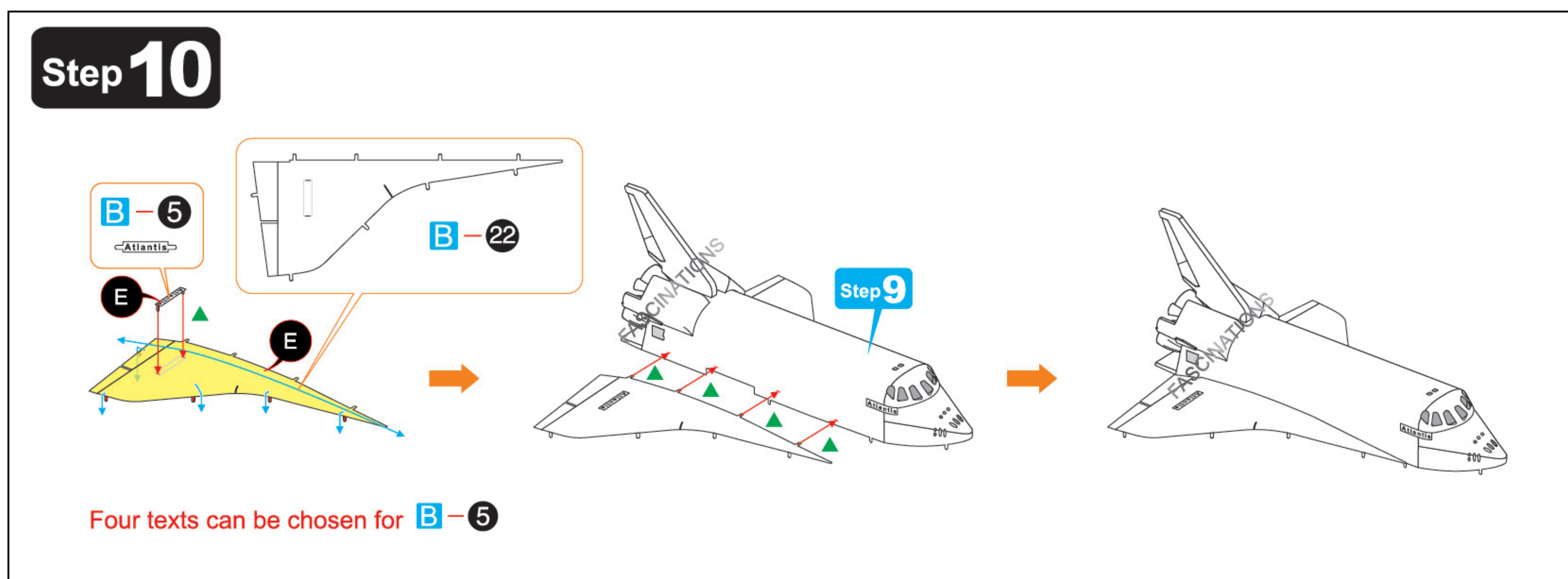
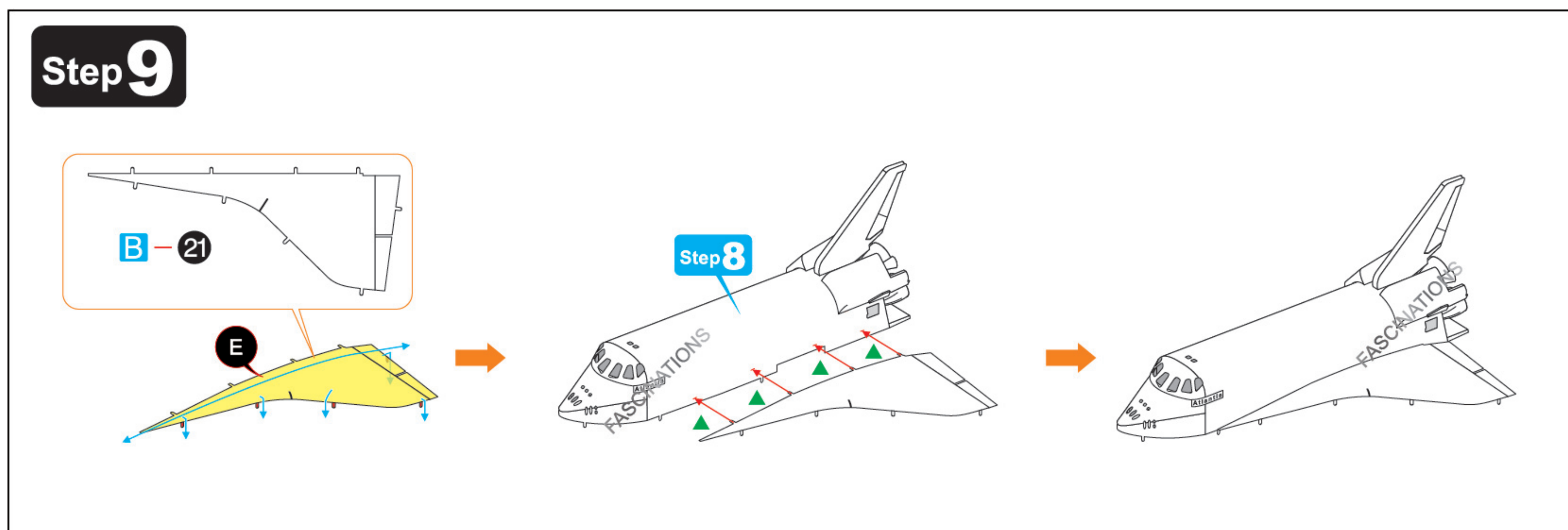
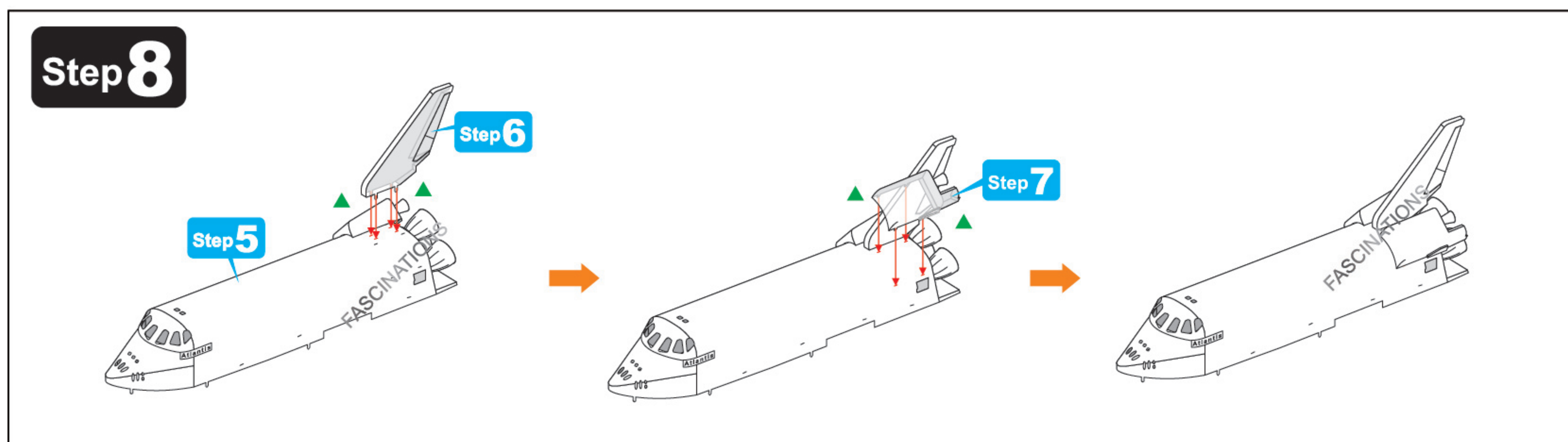
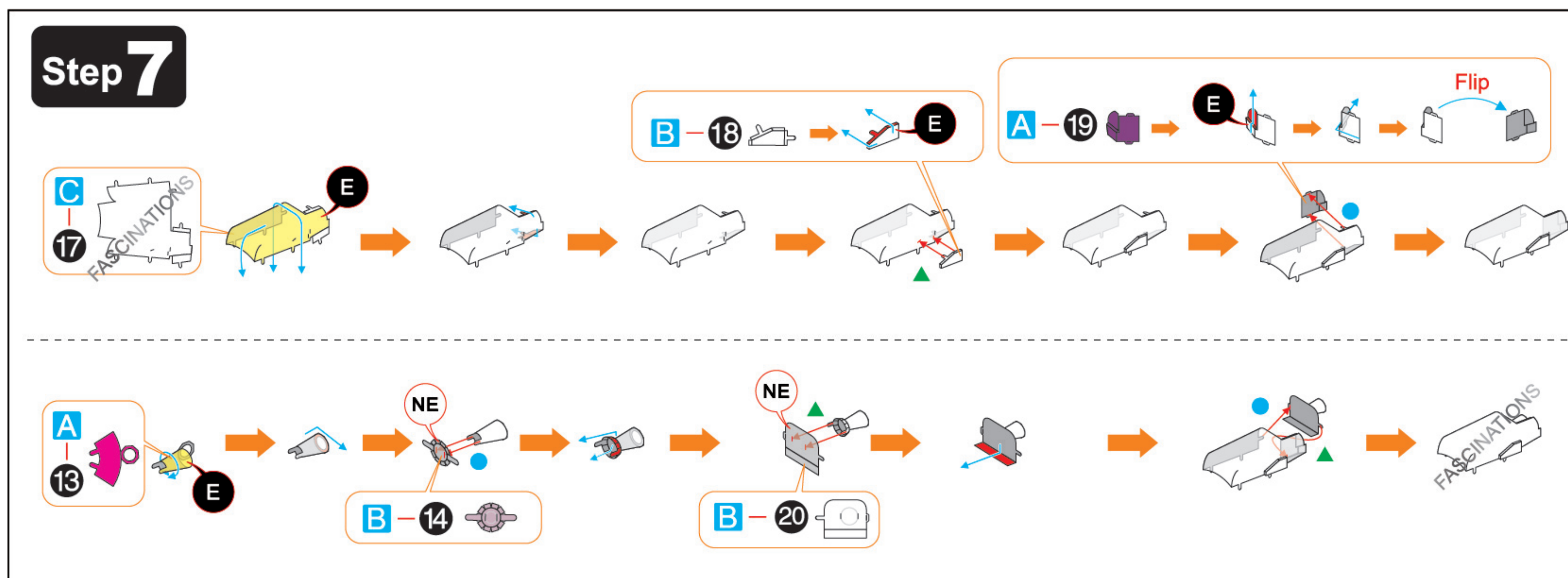
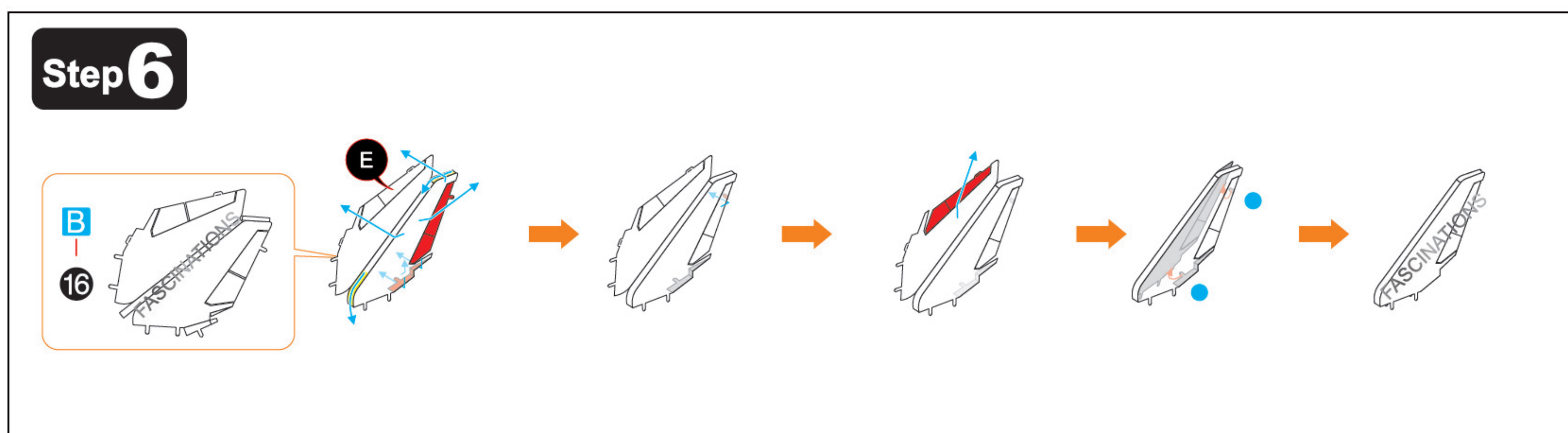
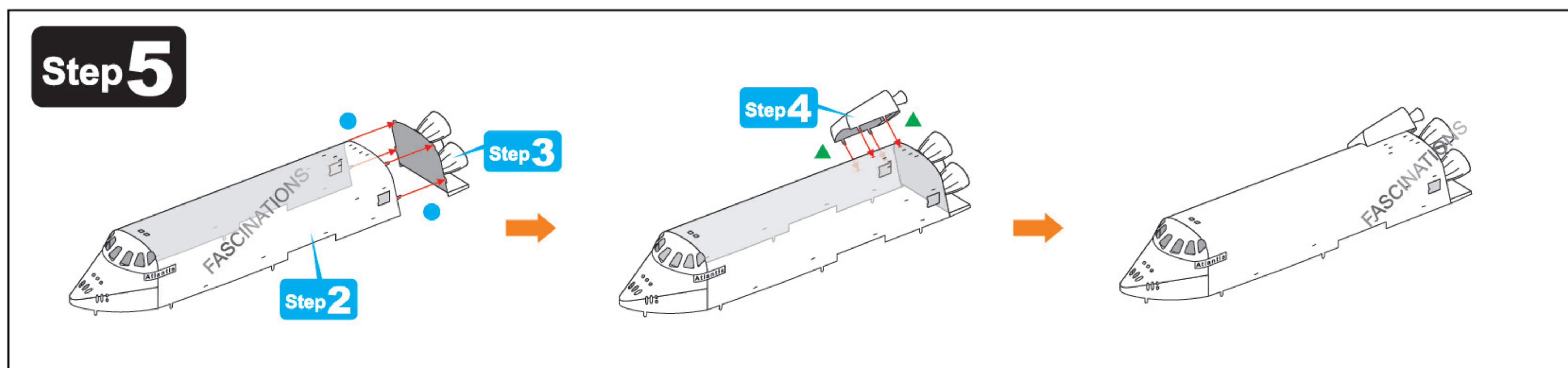
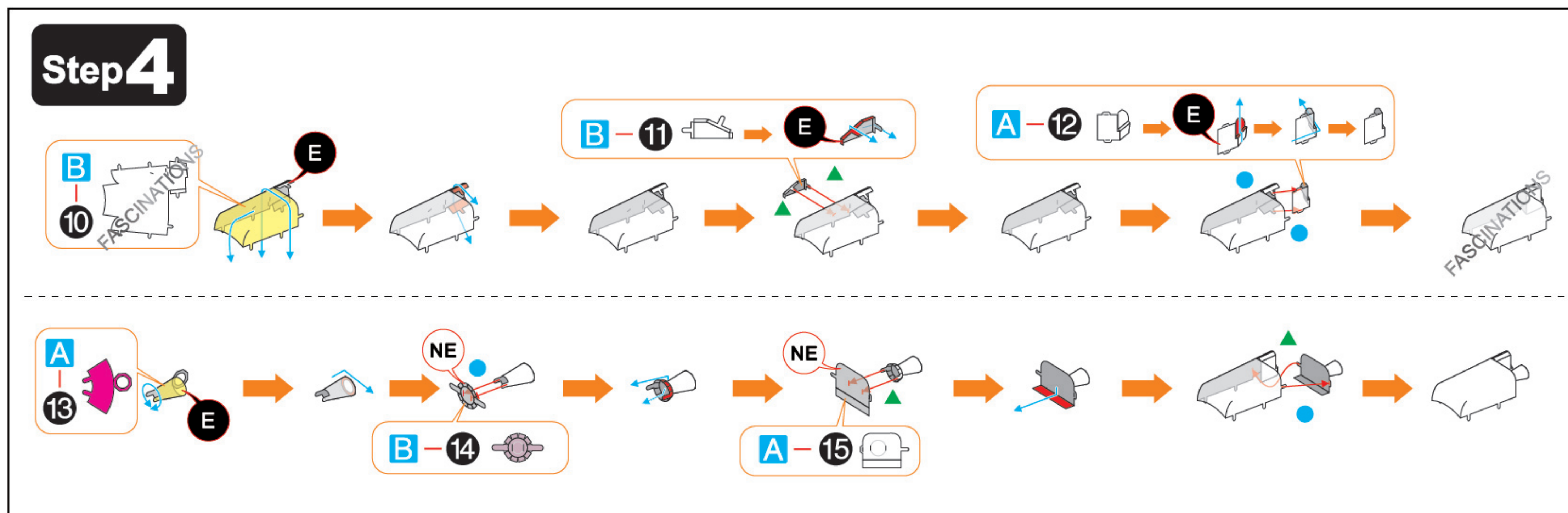
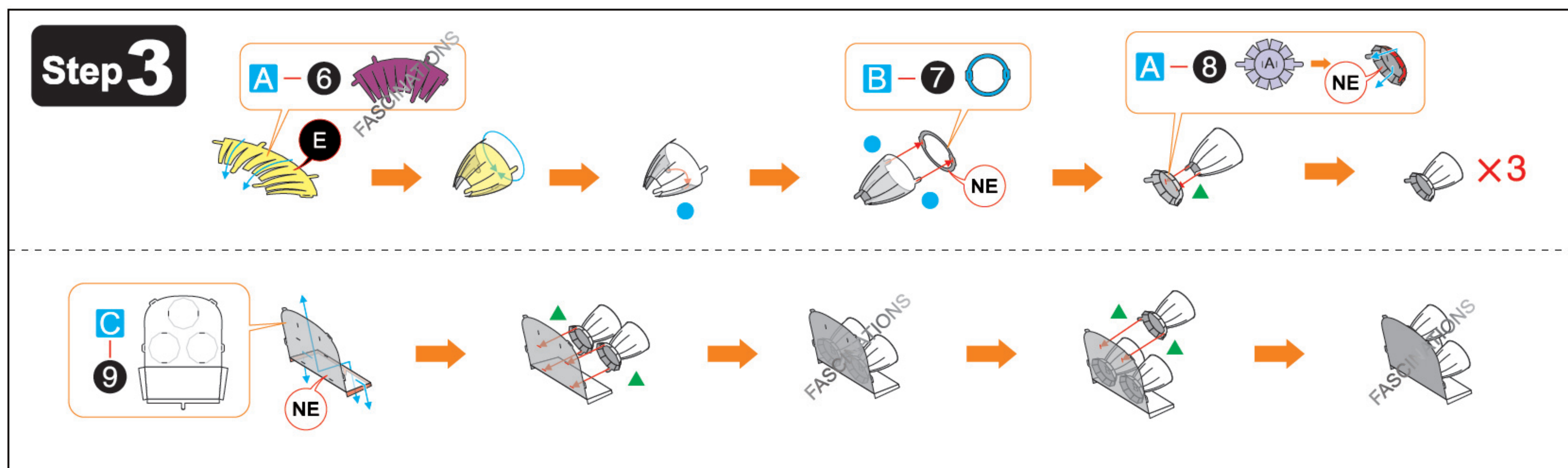
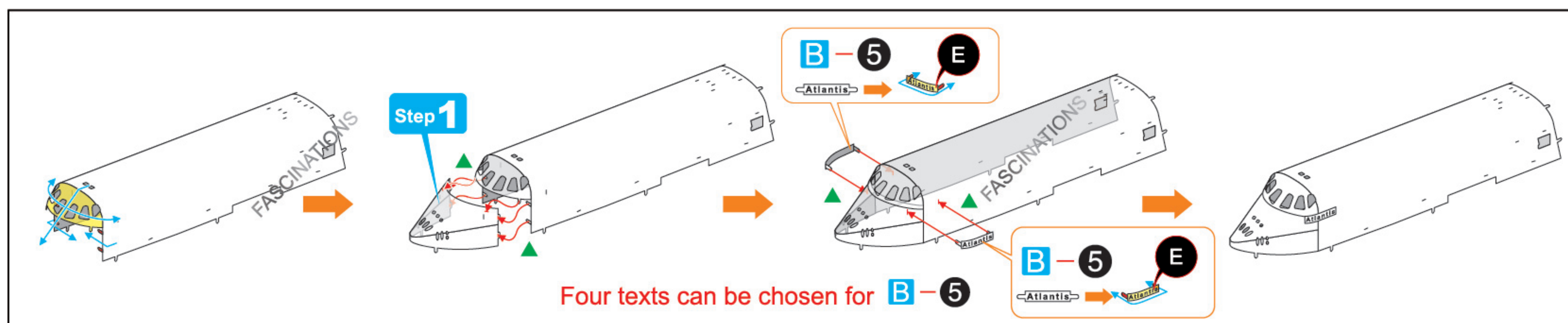


### Step 2



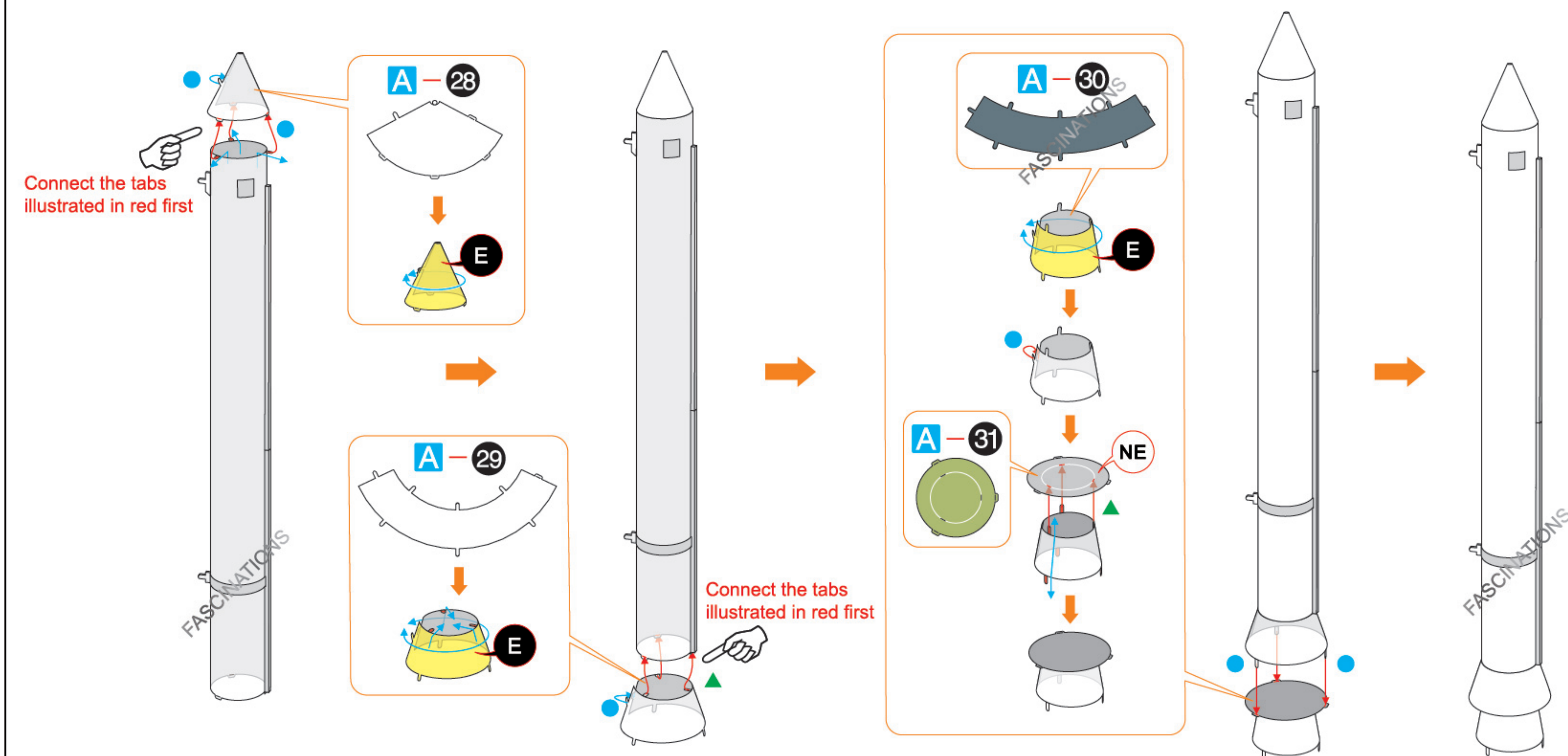
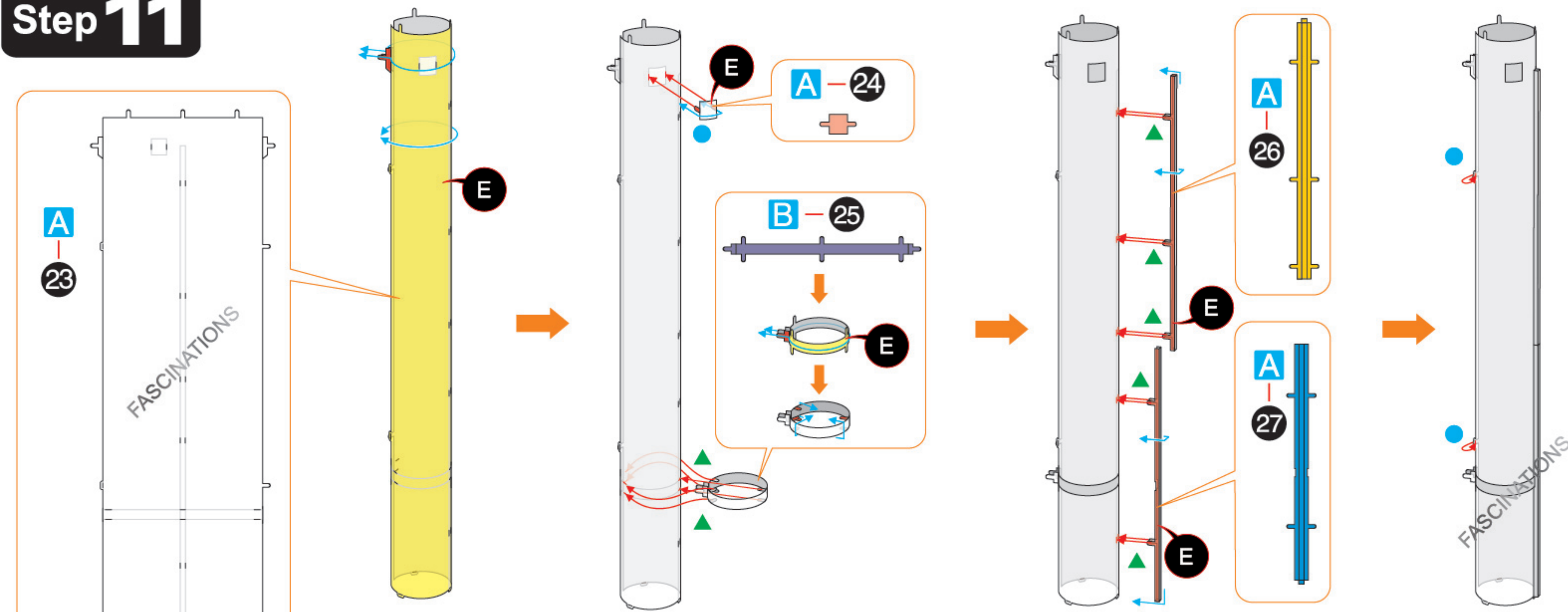
In order to avoid possible injury from sharp edges, please carefully discard the metal sheets after parts have been removed.



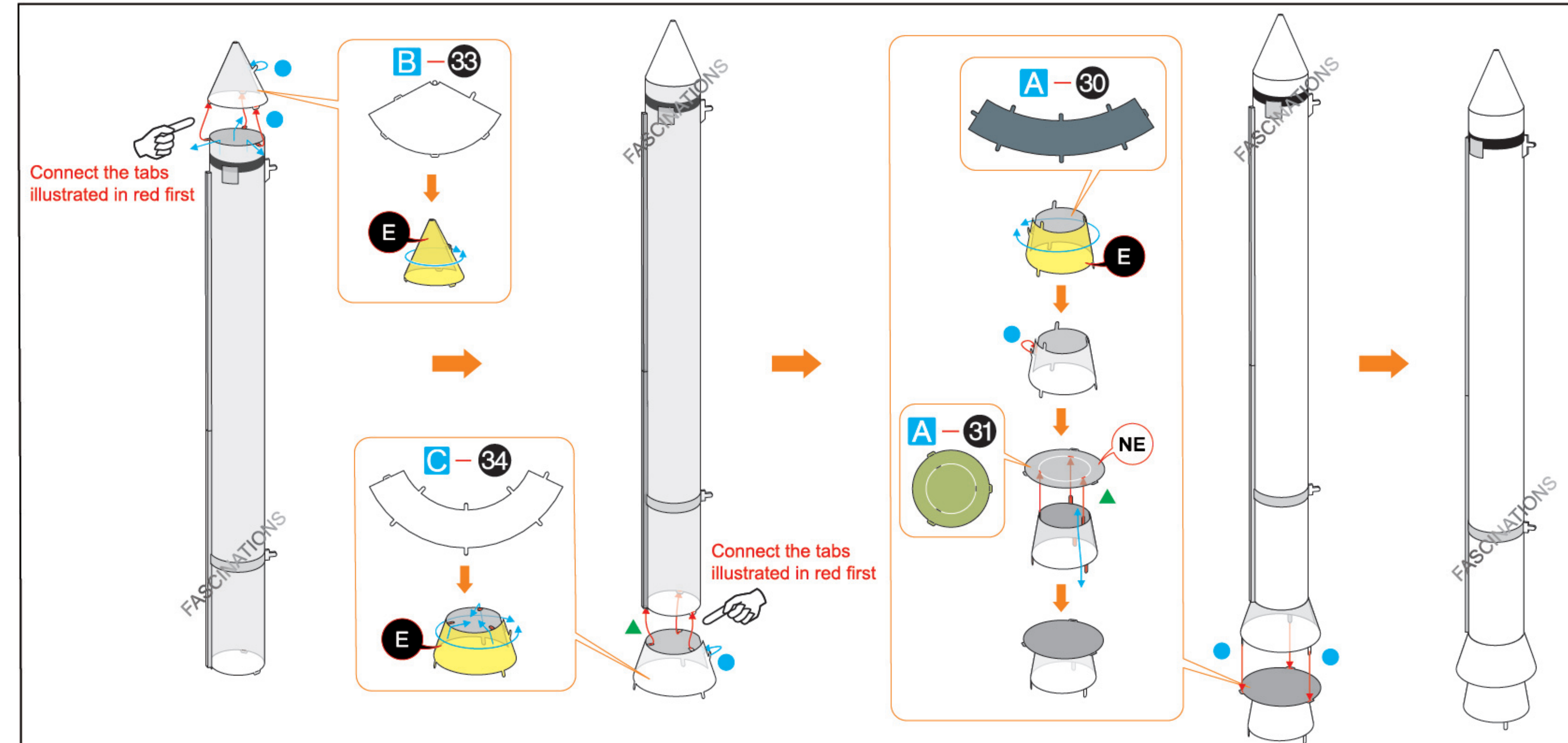
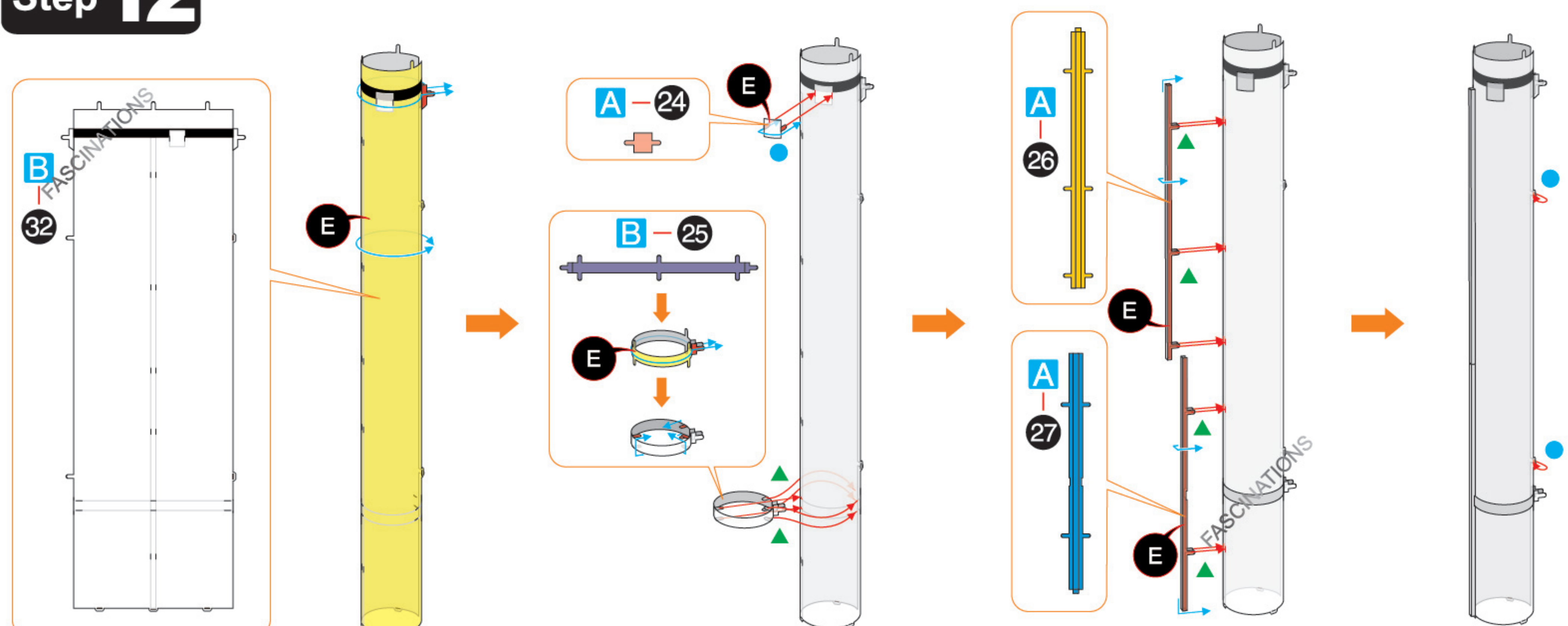




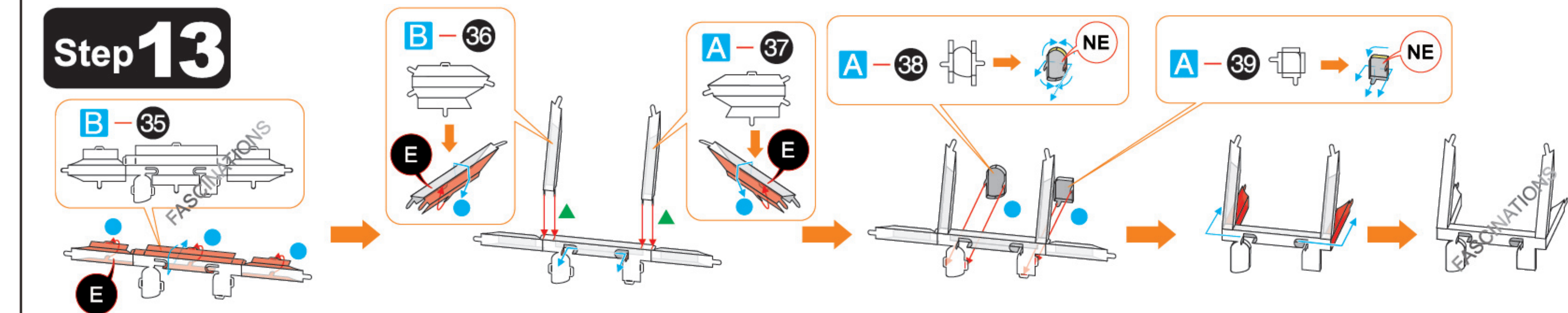
## Step 11



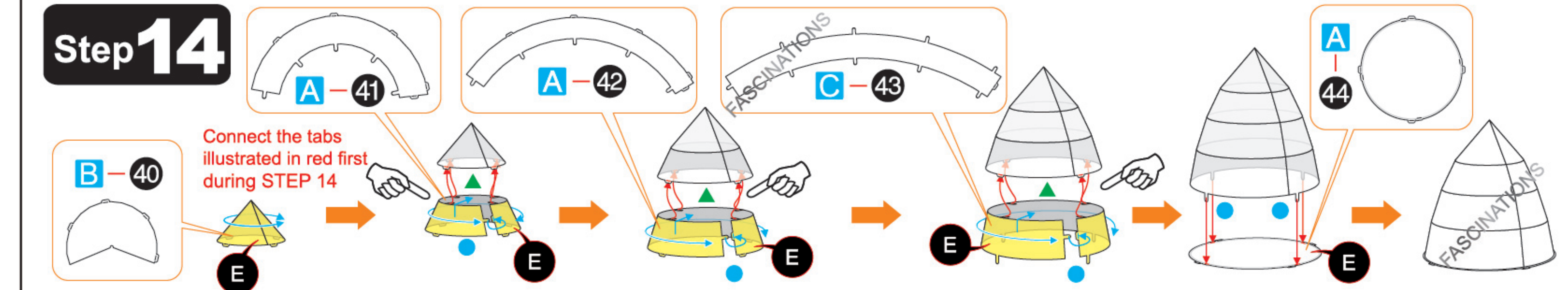
## Step 12



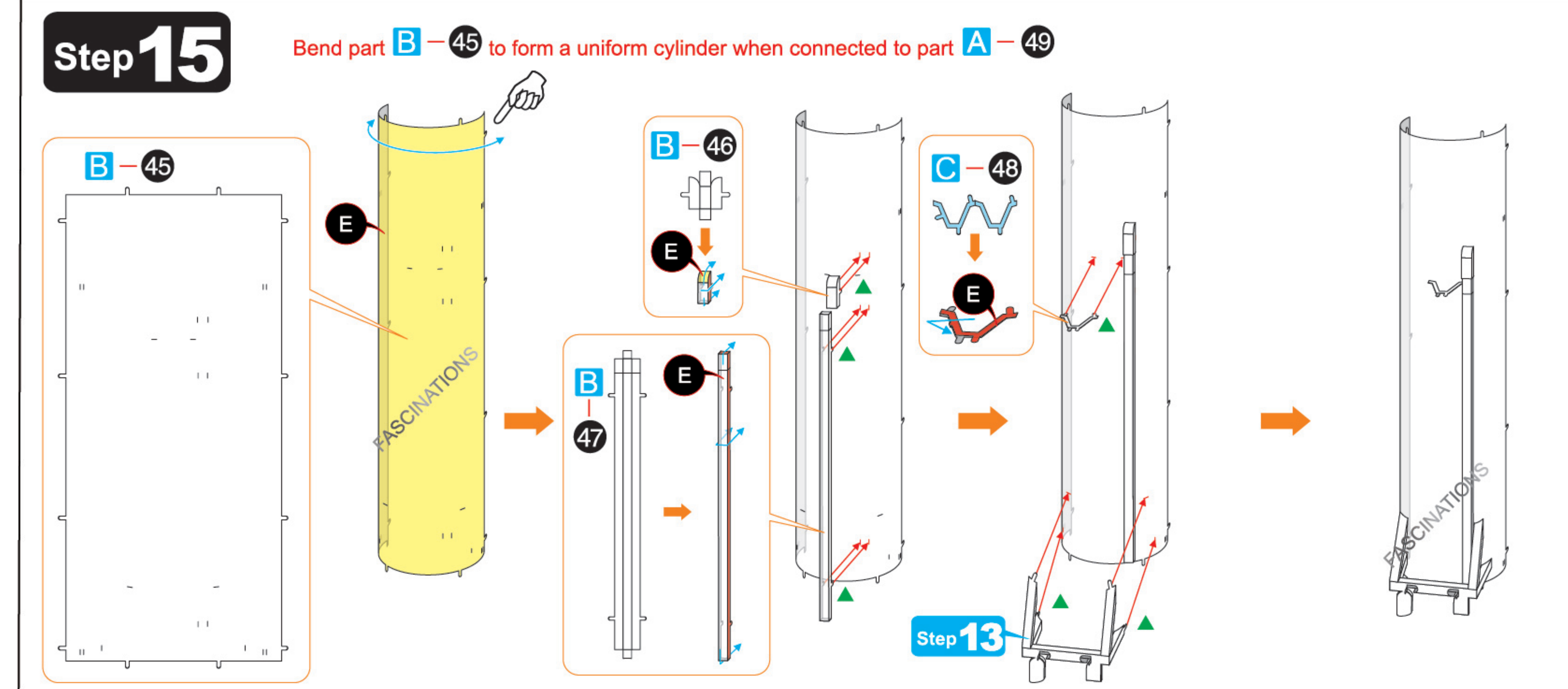
## Step 13



## Step 14

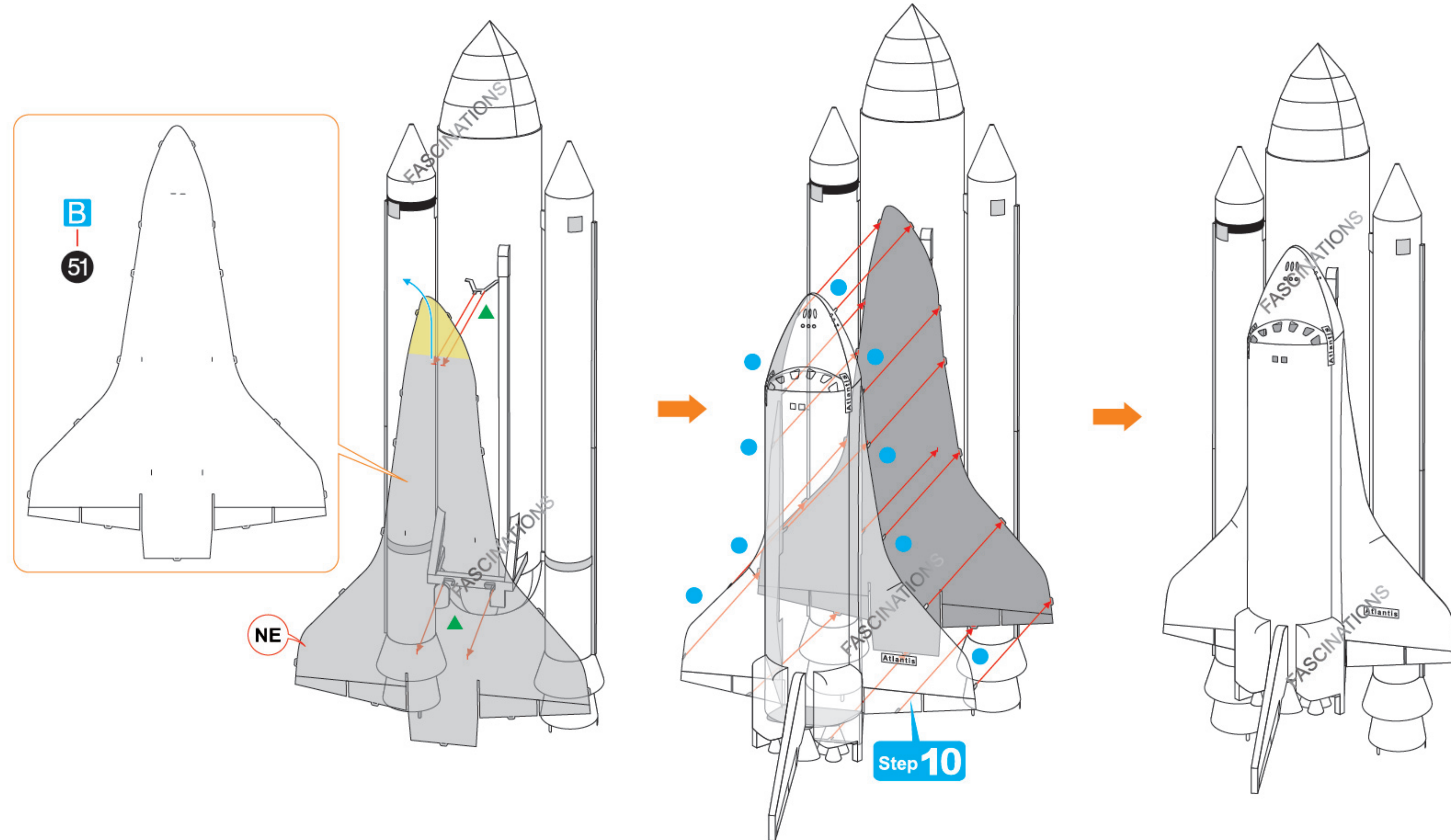
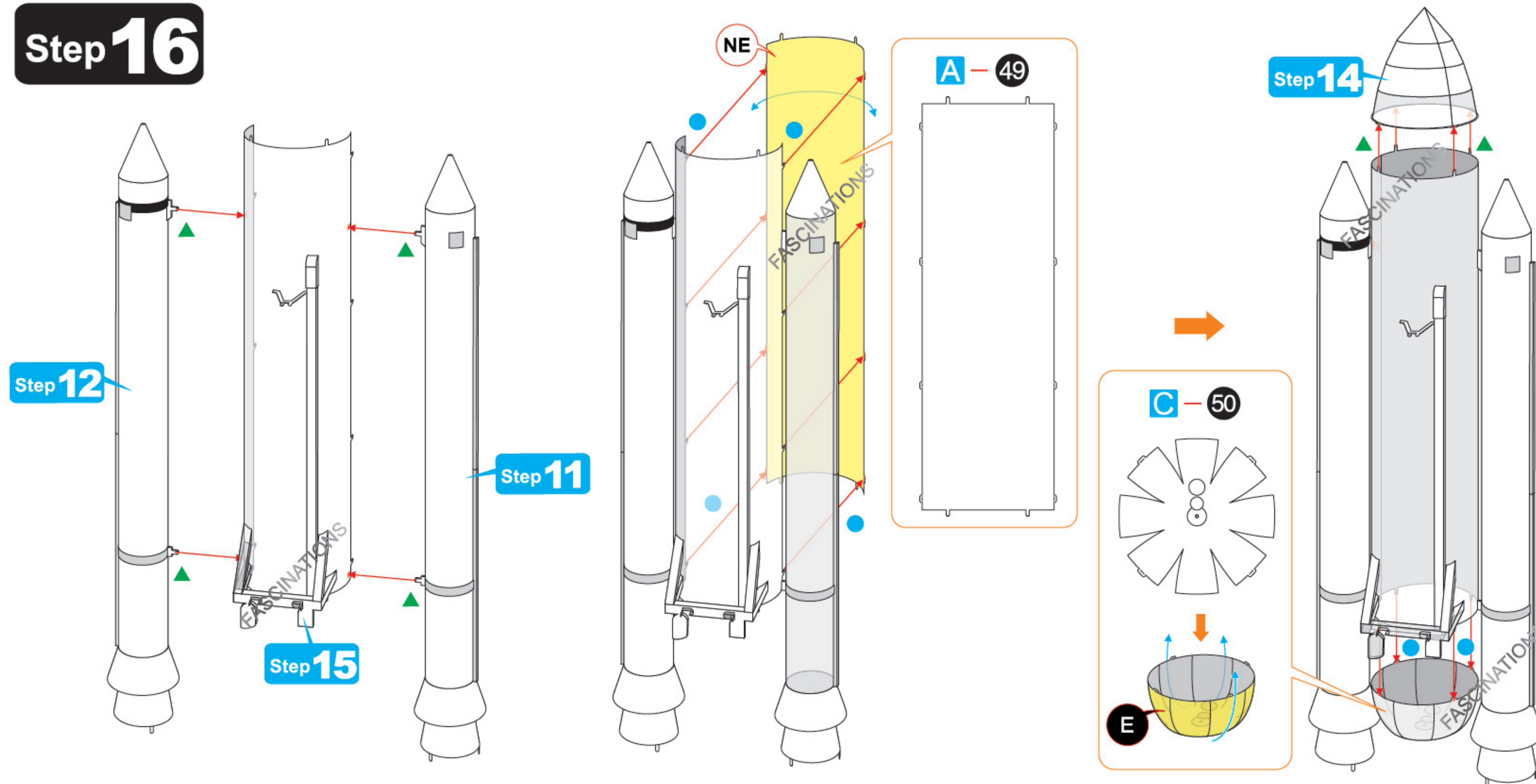


## Step 15

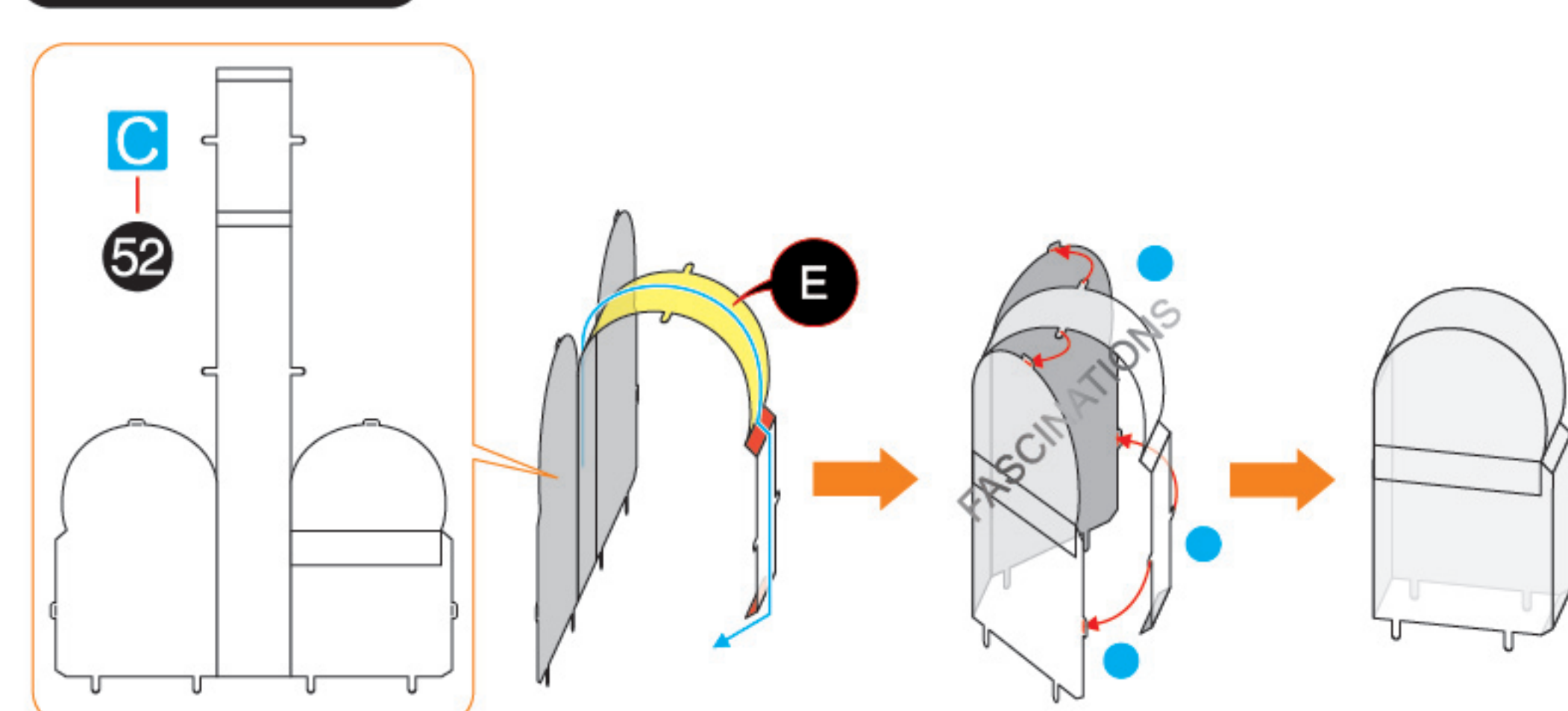




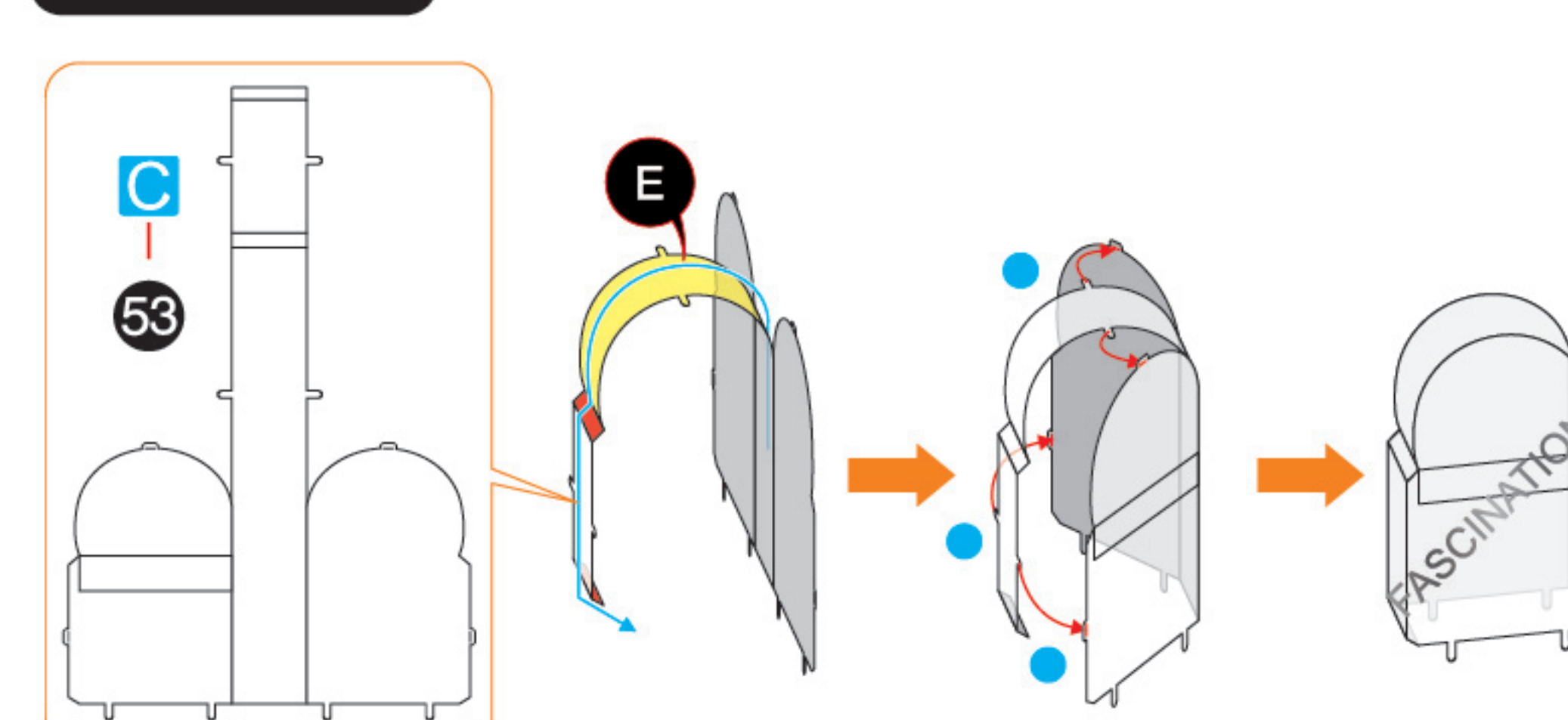
## Step 16



## Step 17



## Step 18



## Step 19

