

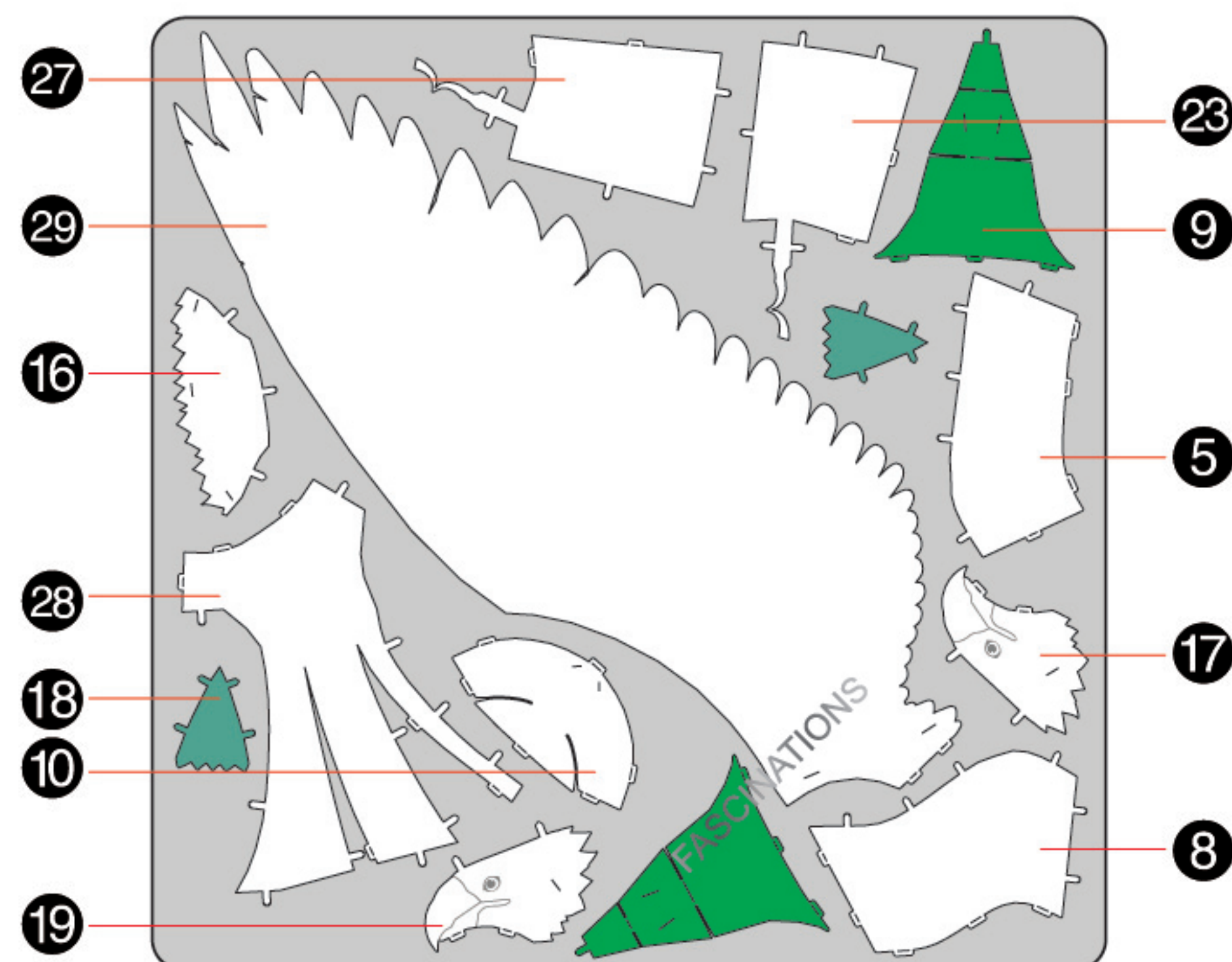
**BUCKBEAK**  
MMS452



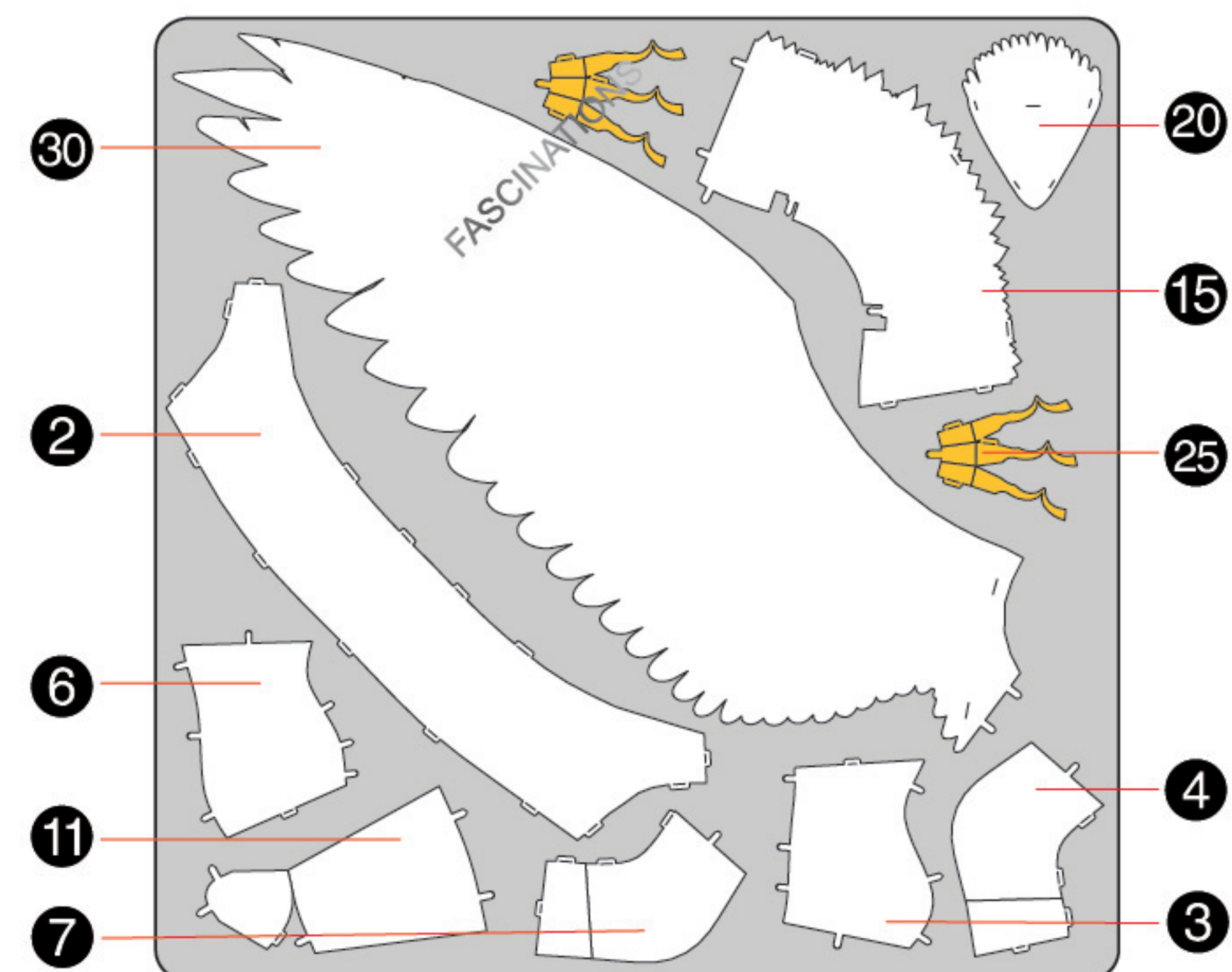
It is highly recommended that you visit  
[www.metalearth.com/360/mms452](http://www.metalearth.com/360/mms452)  
to see the completed model before assembling your own

## METAL SHEETS

**A**

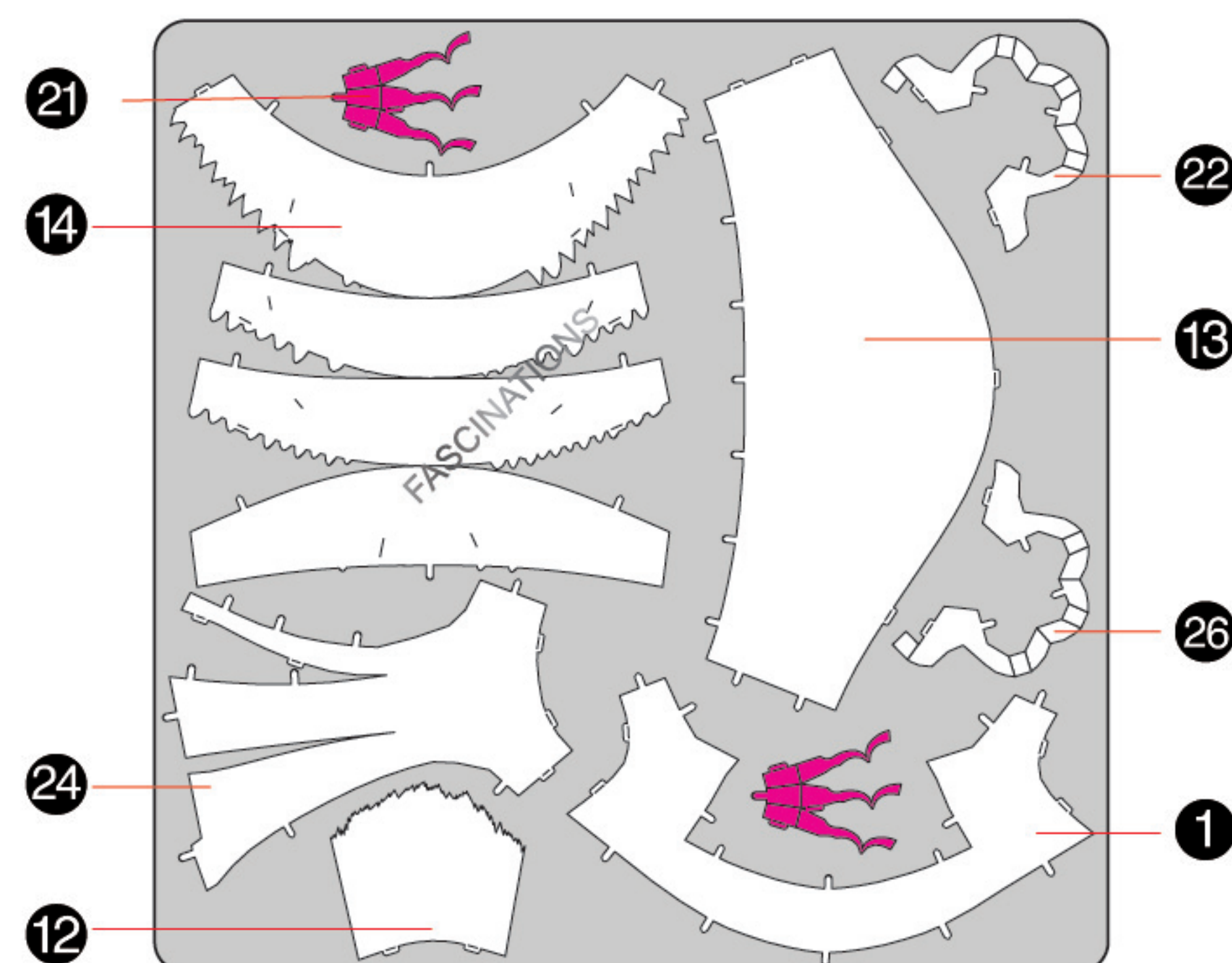


**B**



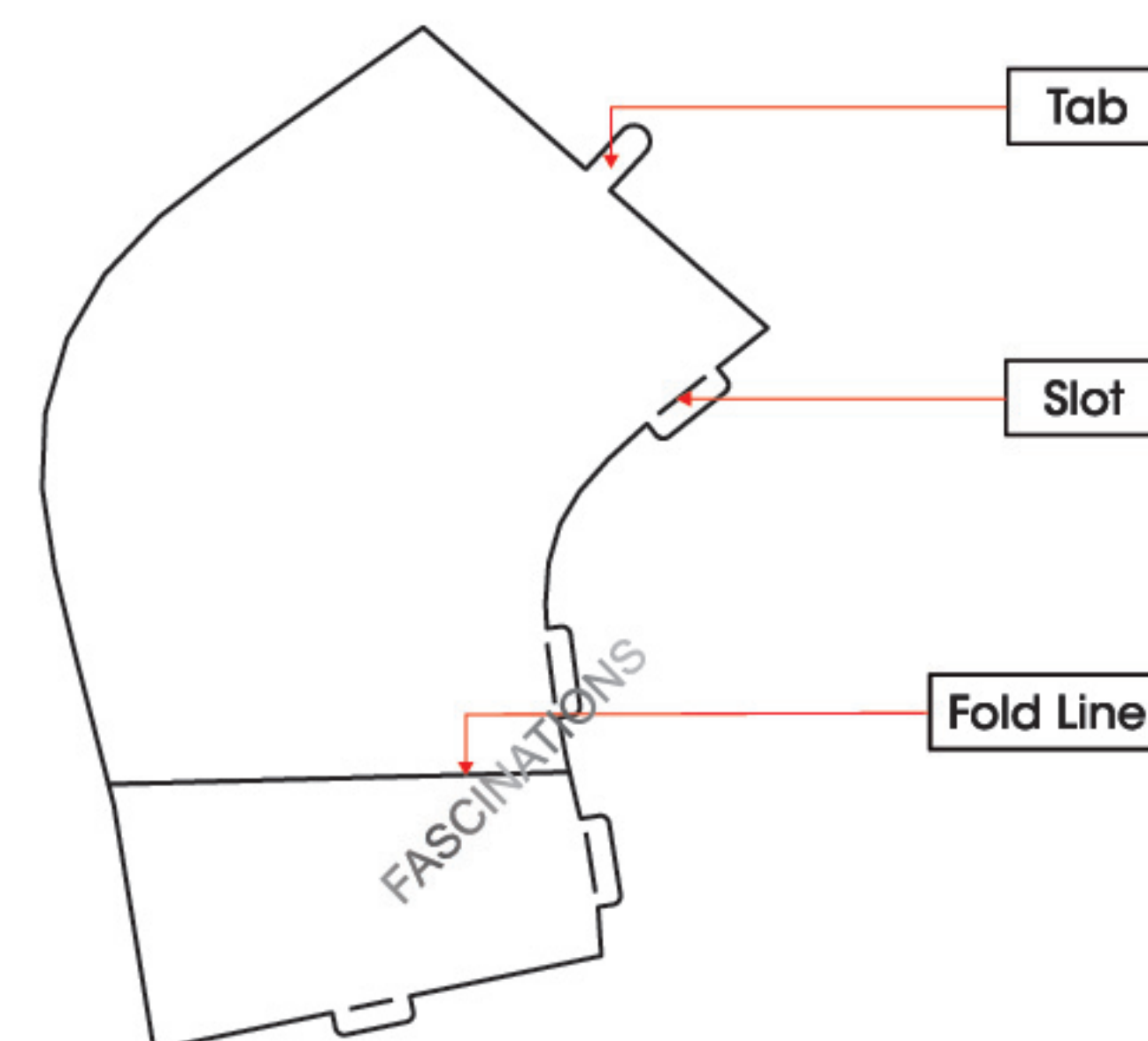
Parts with same color are duplicates

**C**



## TO CREATE THE BEST CONNECTIONS

**B-4**



### Legends:

- E** Engraved / Color side
- NE** Non - engraved / Silver side
- Attention point
- Insert tab and bend 90 degrees
- Insert tab and twist 90 degrees

### Recommended tools:

- Wire cutters: helpful for taking parts from the metal sheets.



- Tweezers or needle nose pliers: helpful for folding parts, bending and twisting tabs.



### Assembly tip:

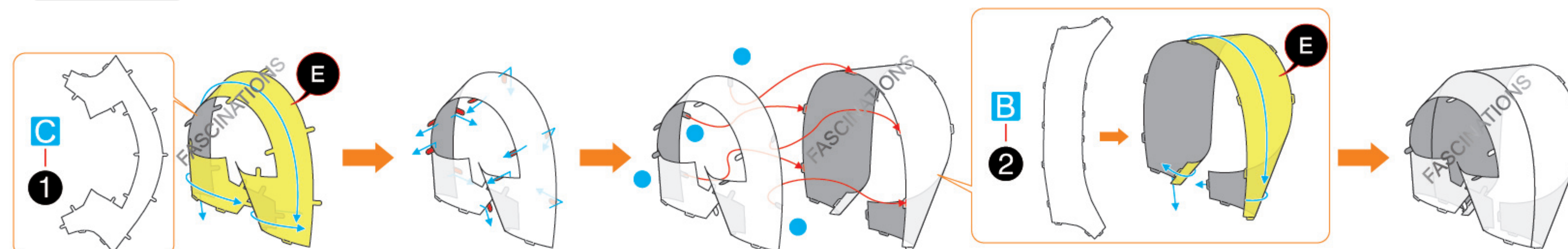
If needed, slightly twist tabs to hold parts together then untwist and bend them down for a nice finish.



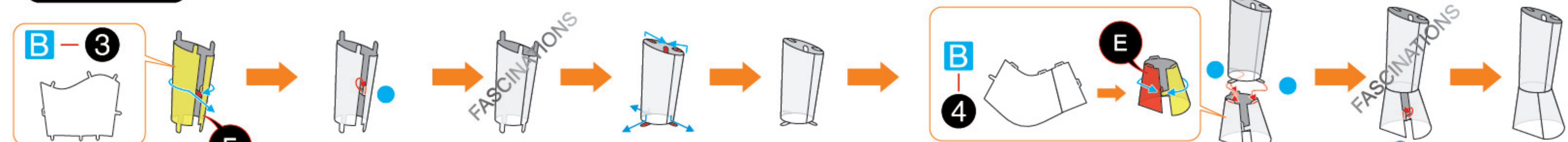
In order to avoid possible injury from sharp edges, please carefully discard the metal sheets after parts have been removed.

## ASSEMBLY FLOW CHART

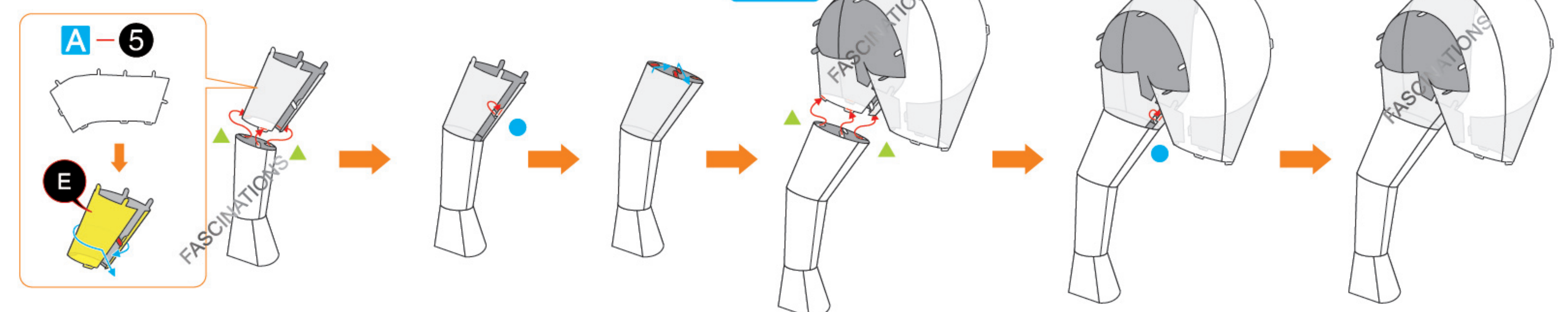
### Step 1



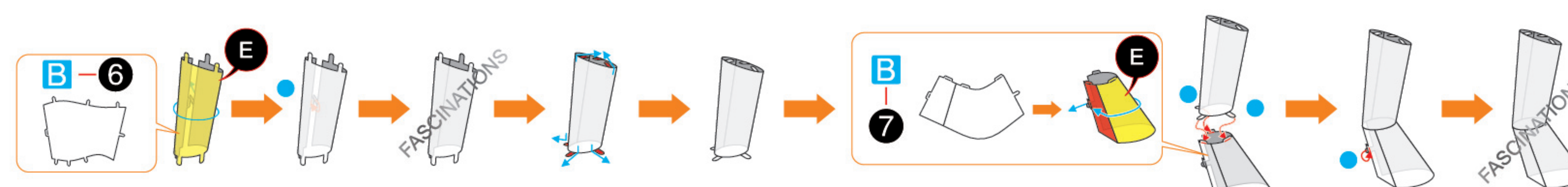
### Step 2



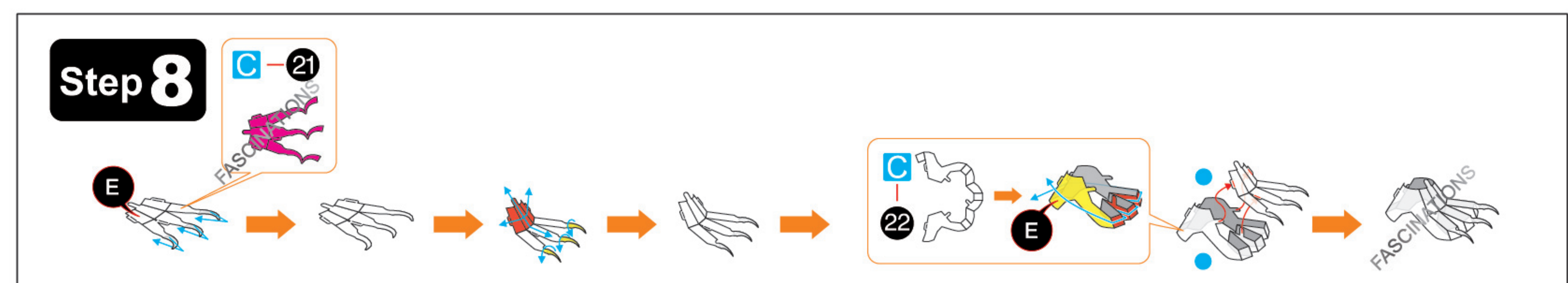
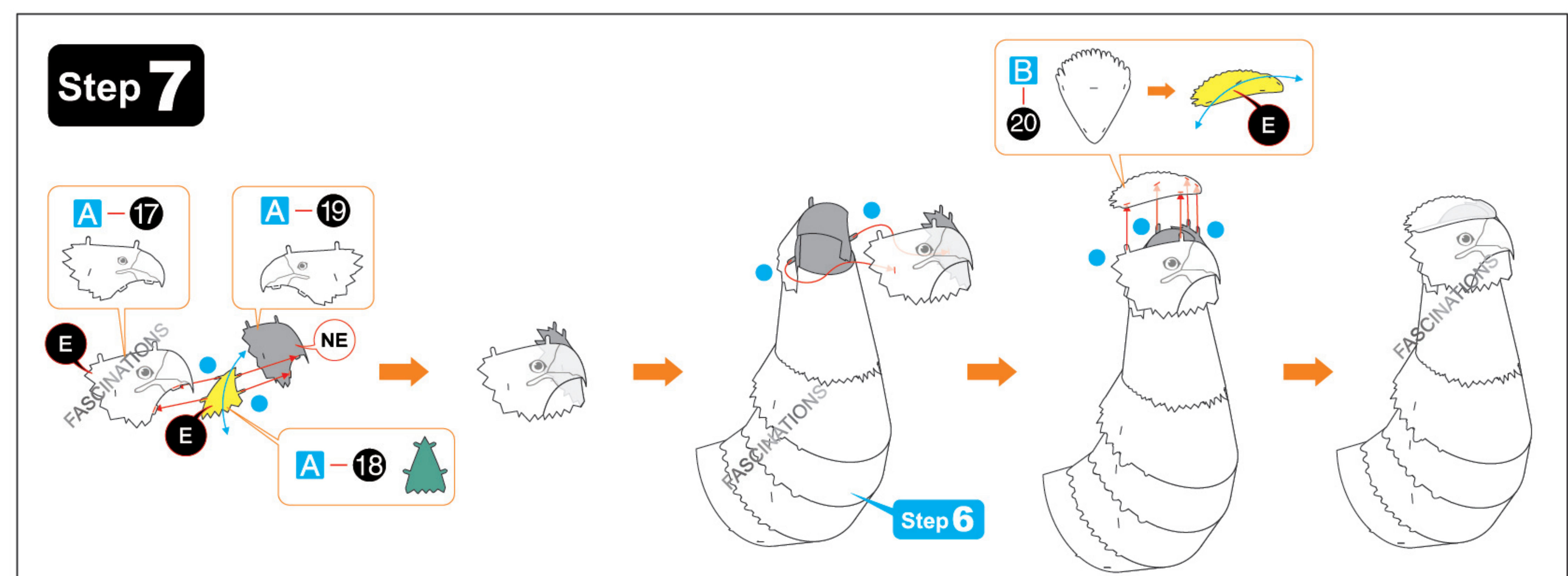
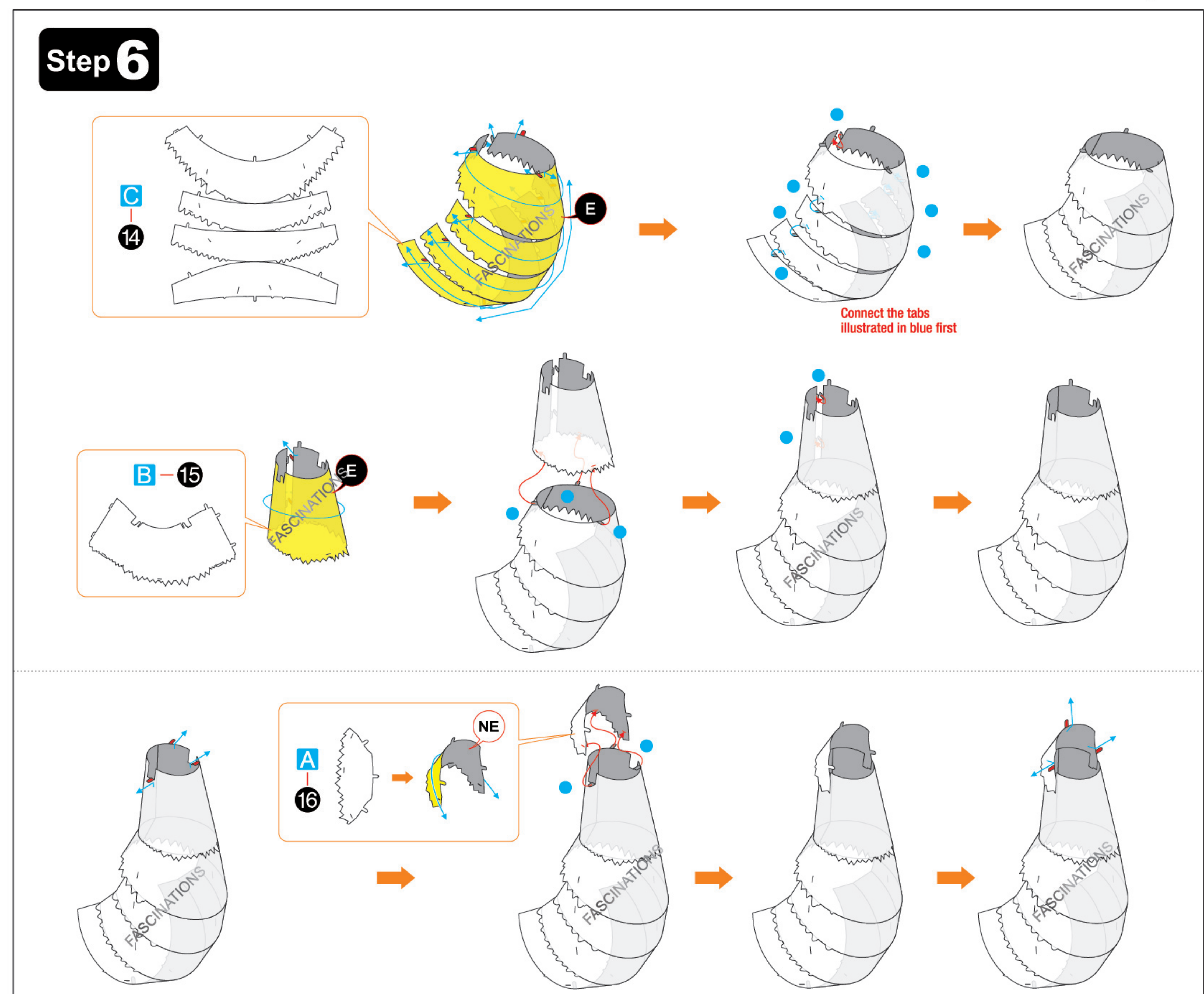
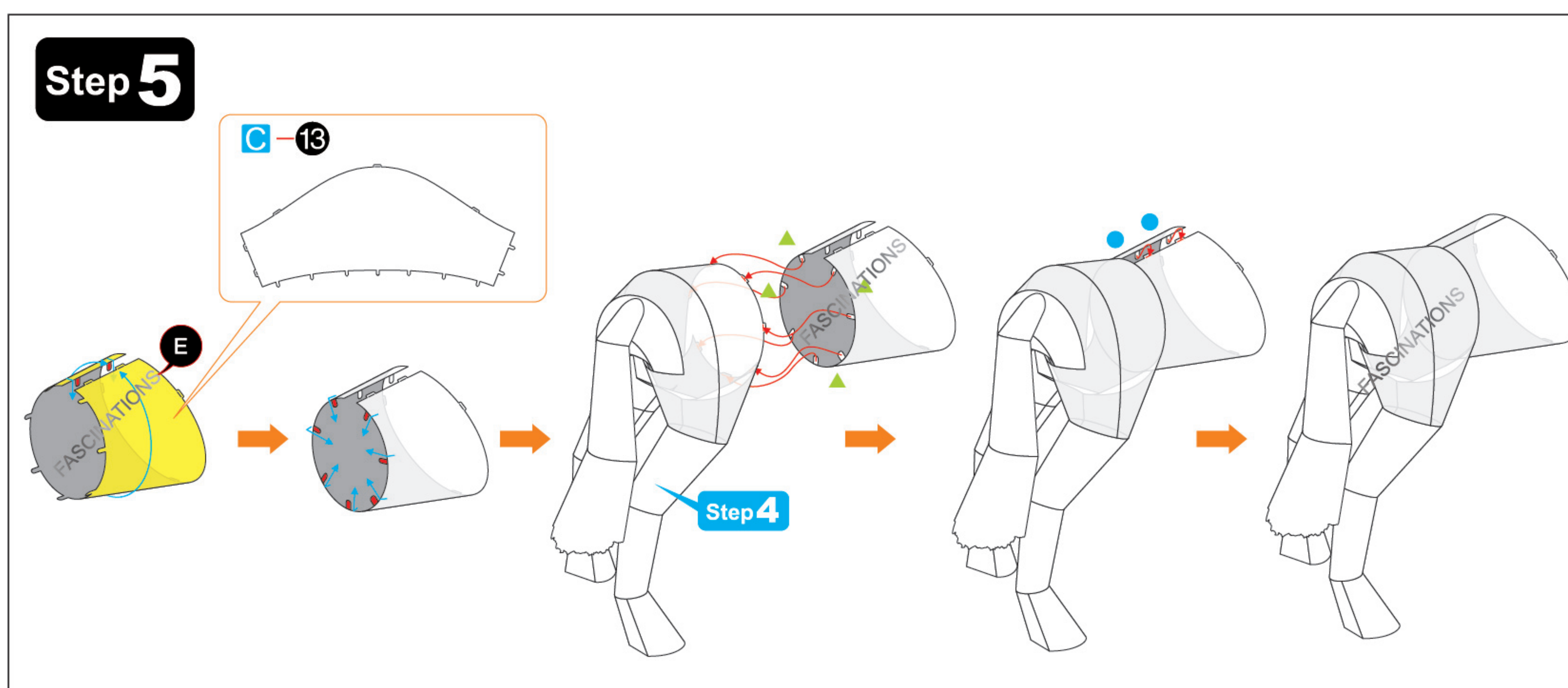
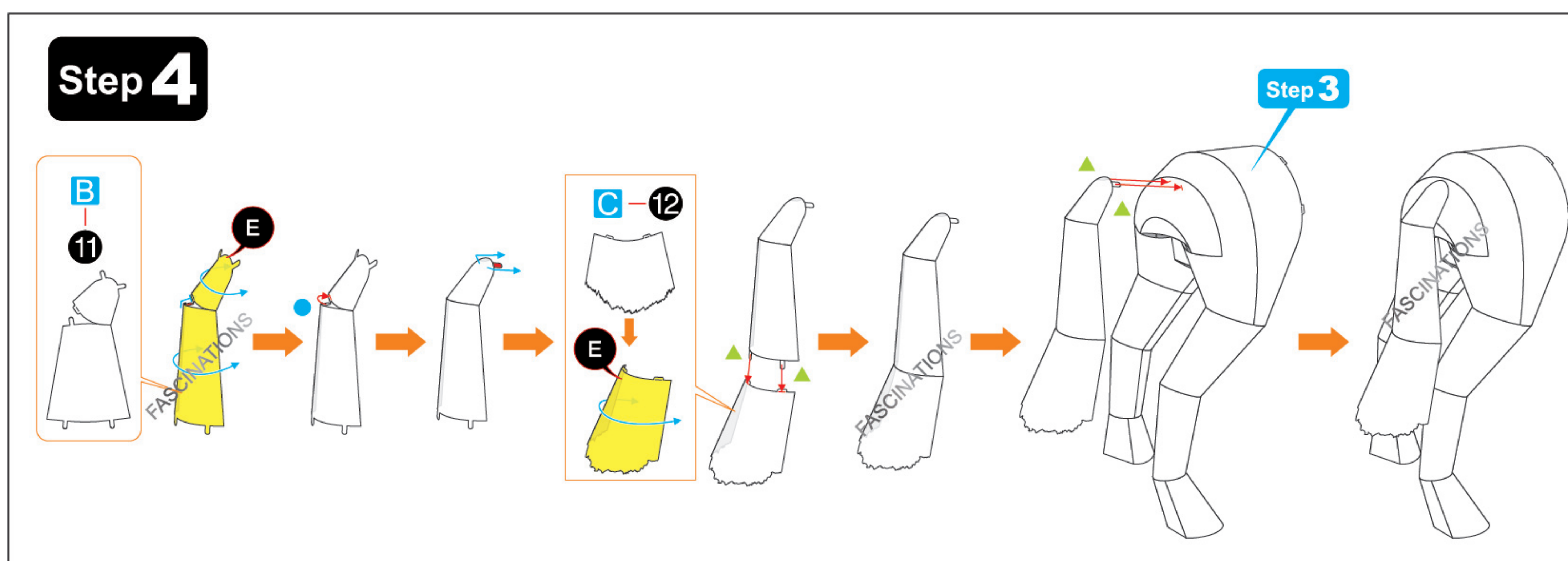
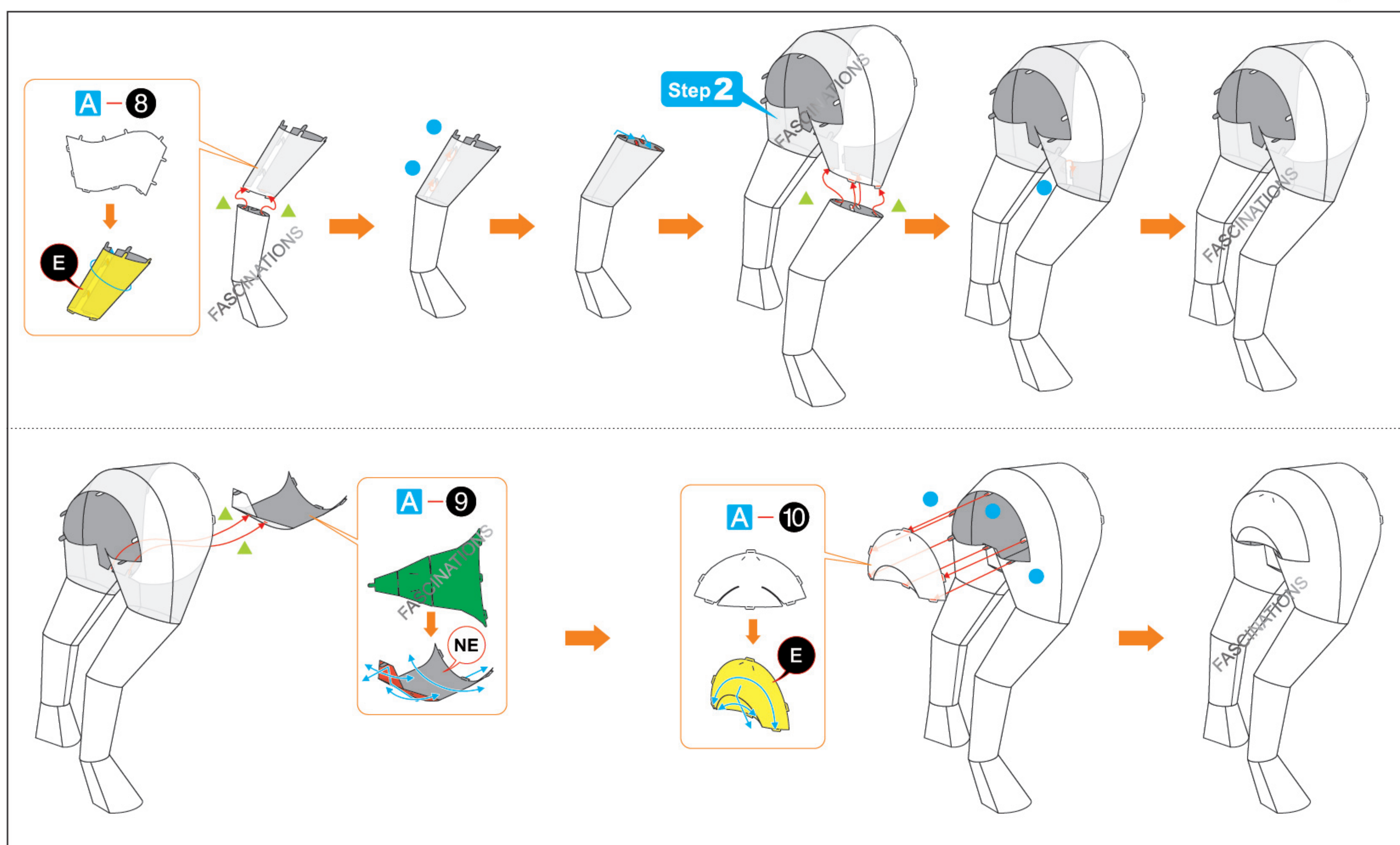
### Step 1



### Step 3

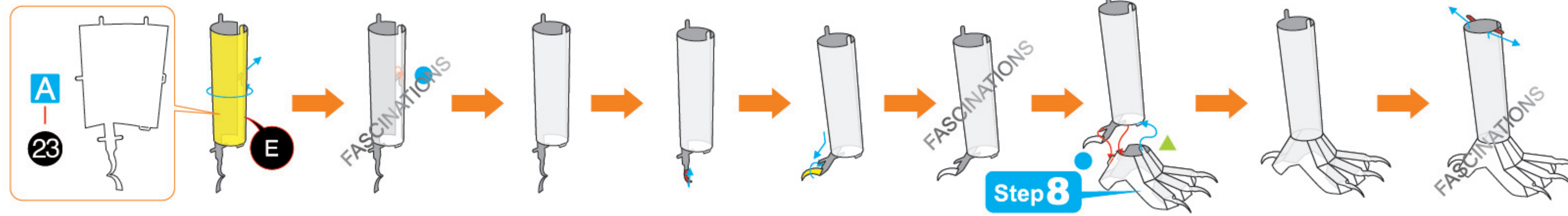




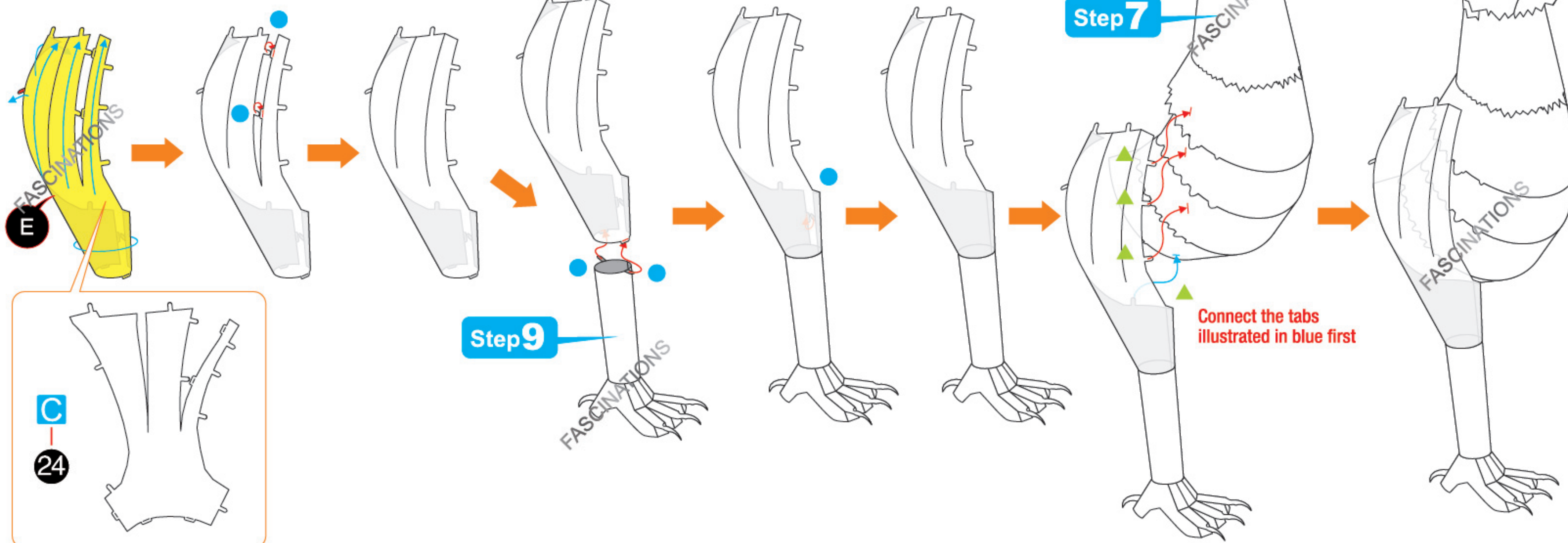




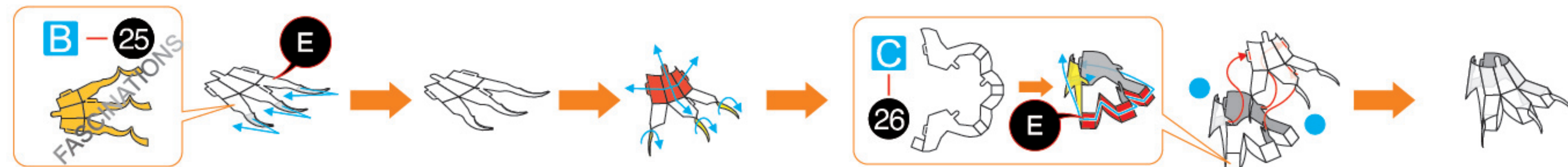
## Step 9



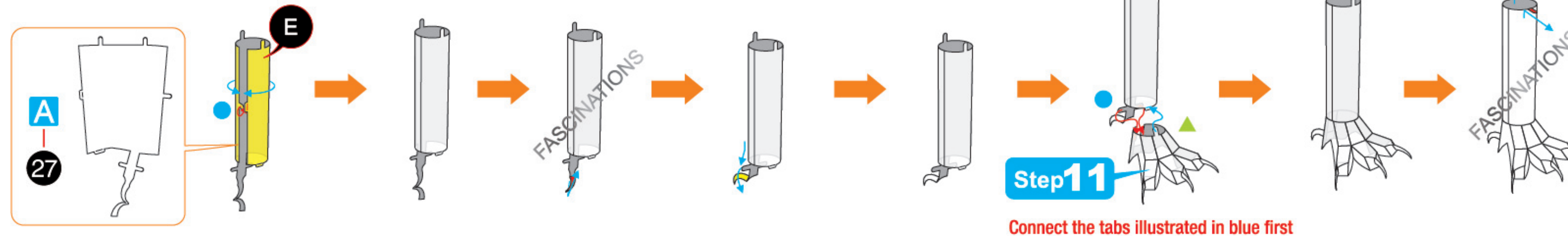
## Step 10



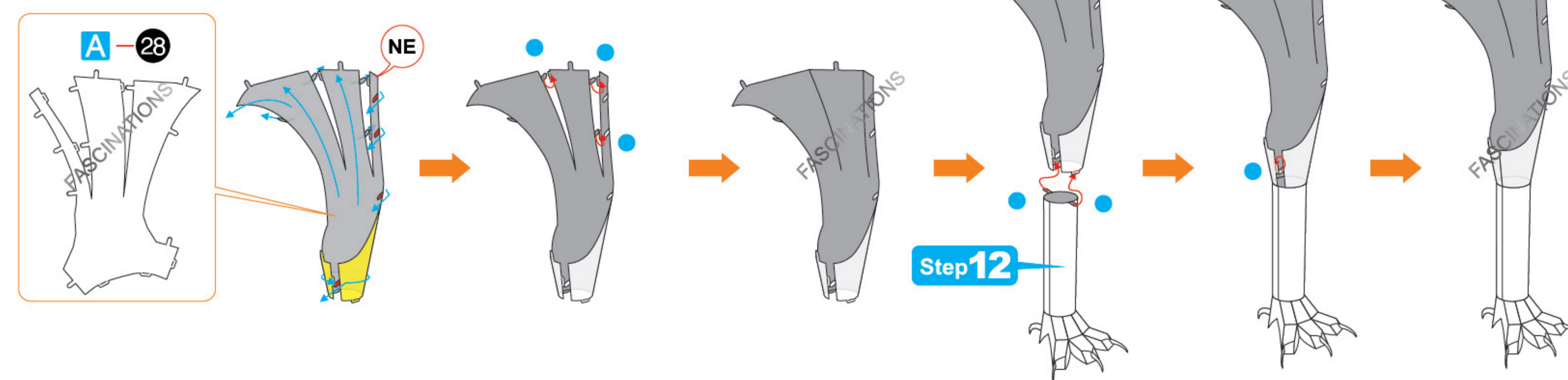
## Step 11



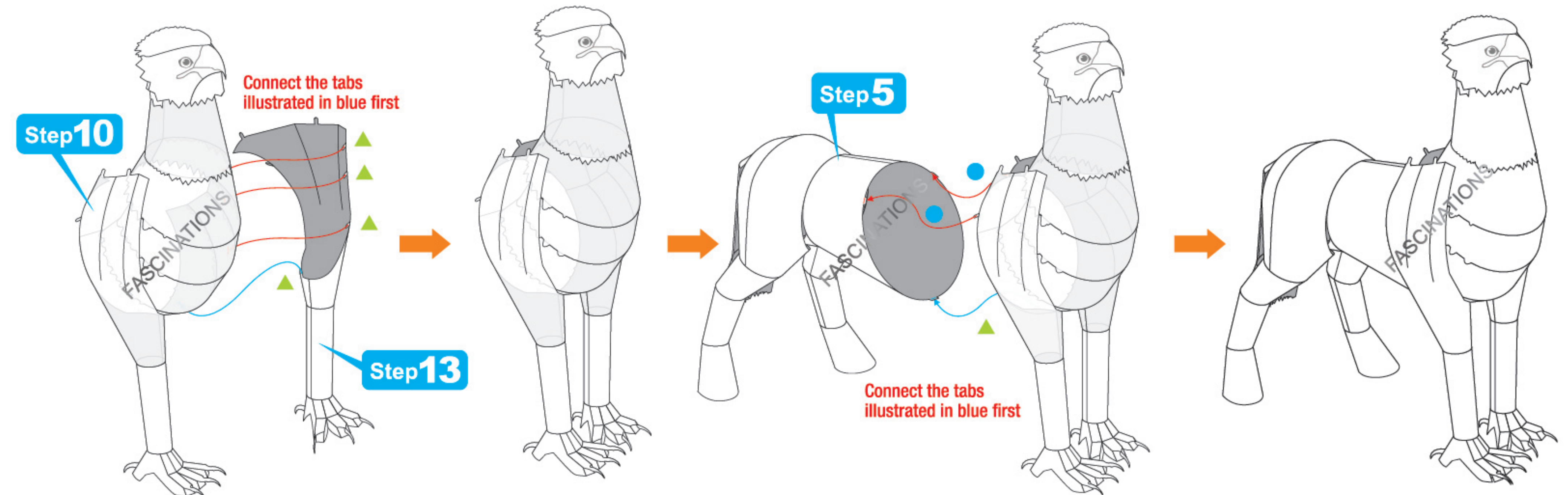
## Step 12



## Step 13



## Step 14



## Step 15

