

F/A-18 SUPER HORNET™
MMS459

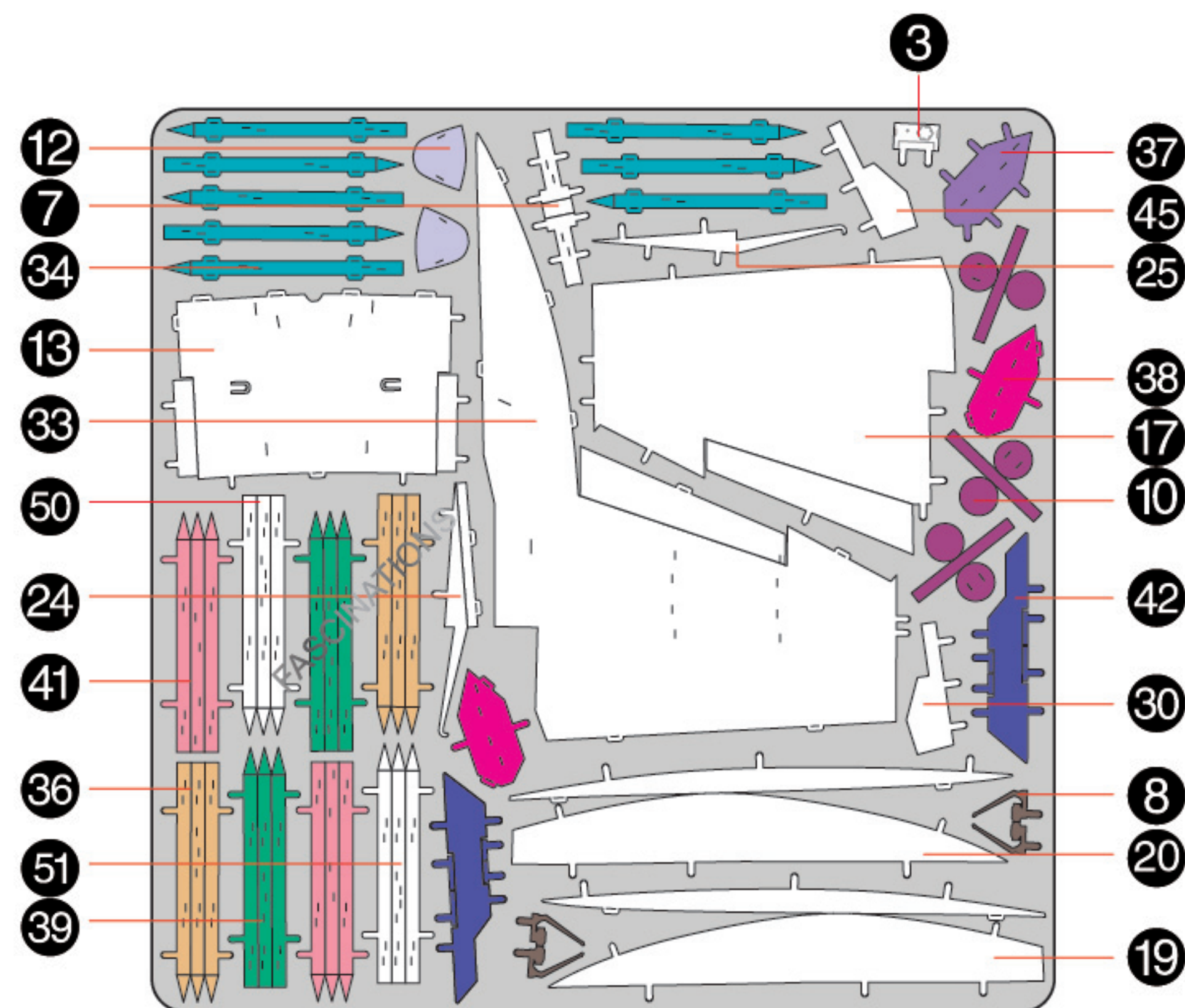


It is highly recommended that you visit
www.metalearth.com/360/mms459
to see the completed model before assembling your own

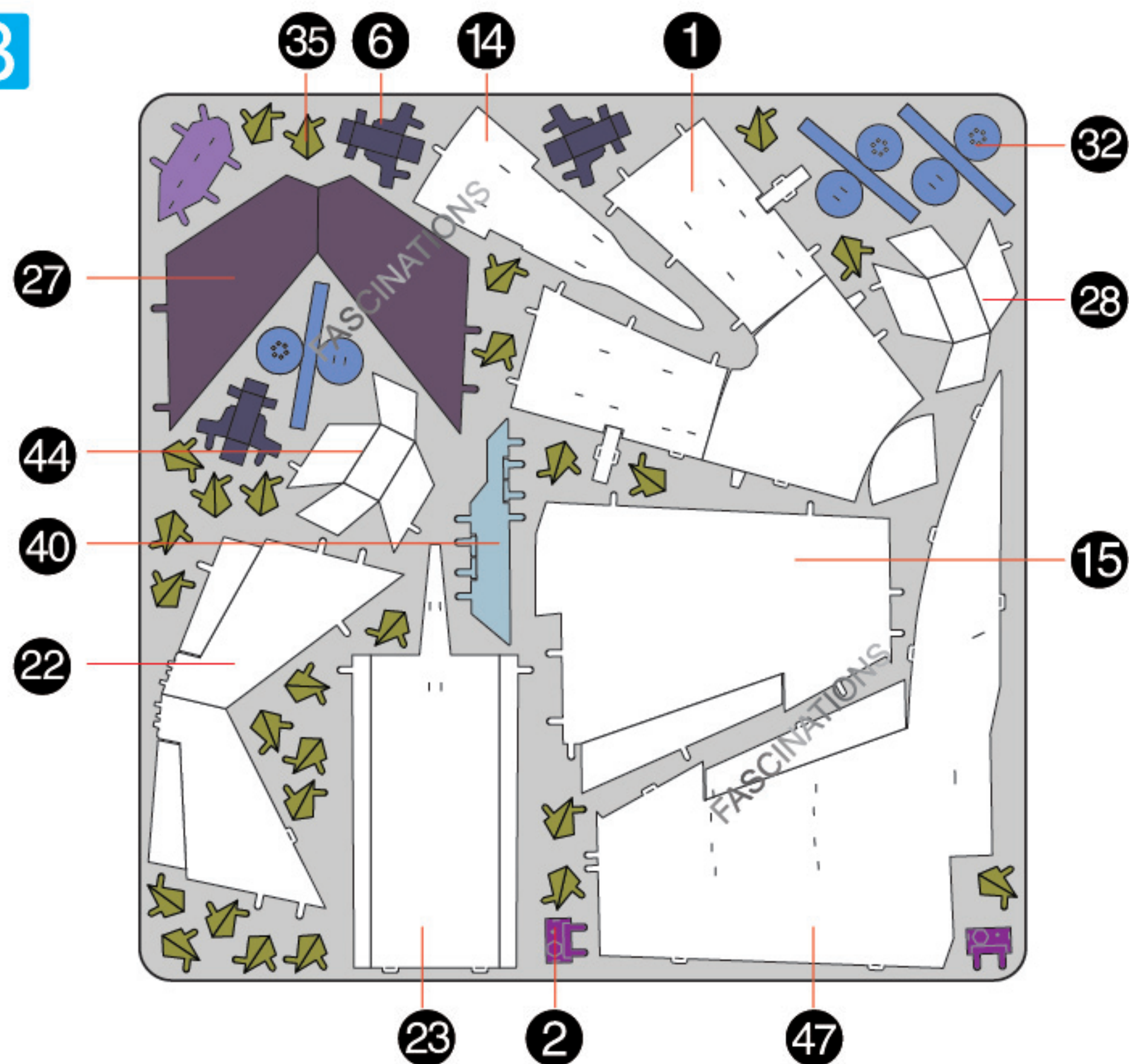
METAL SHEETS

Parts with same color are duplicates

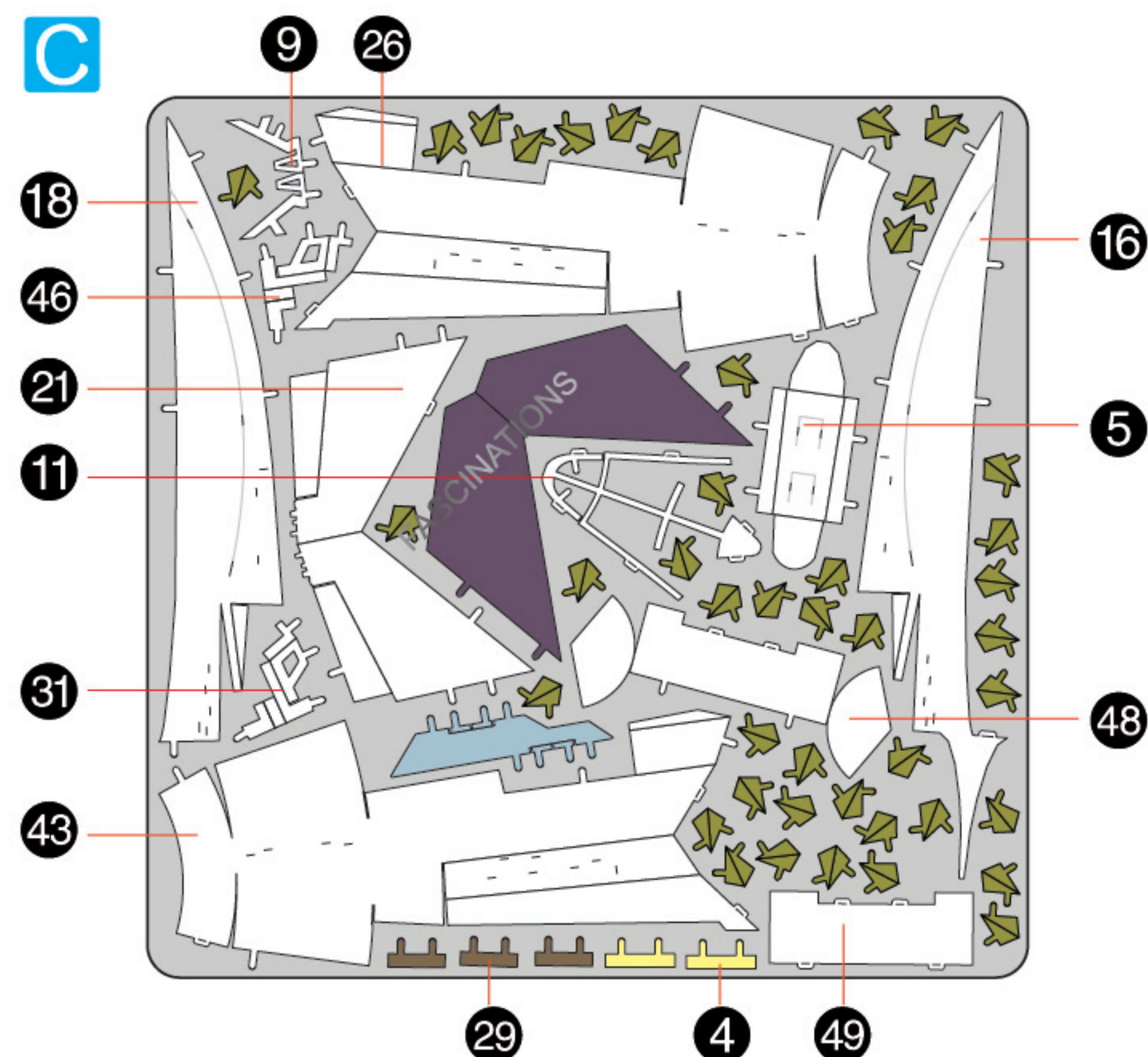
A



B



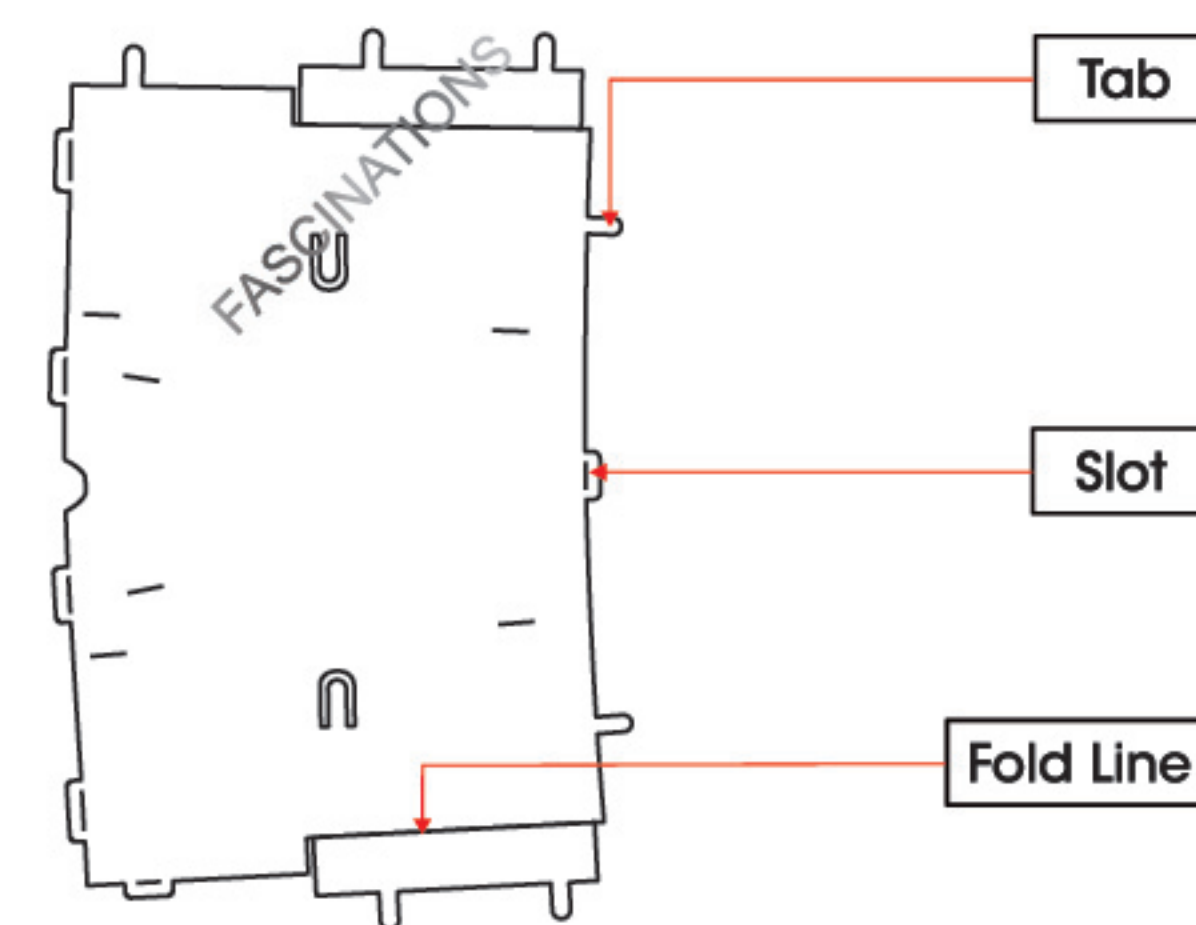
C



Go to www.metalearth.com/360/mms459 to see the zoomable PDF version of this instruction sheet

TO CREATE THE BEST CONNECTIONS

A-13



Legends:

- E** Engraved/ Color side
- NE** Non - engraved/ Silver side
- Attention point
- Insert tab and bend 90 degrees
- Insert tab and twist 90 degrees

Recommended tools:

- Wire cutters: helpful for taking parts from the metal sheets.



- Tweezers or needle nose pliers: helpful for folding parts, bending and twisting tabs.



Assembly tip:

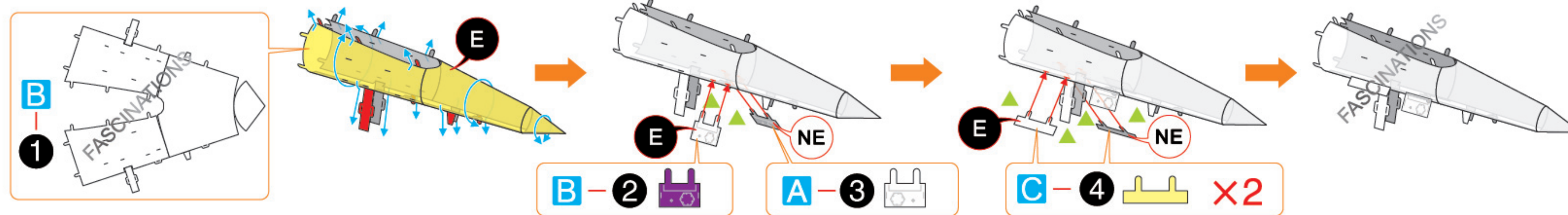
If needed, slightly twist tabs to hold parts together then untwist and bend them down for a nice finish.



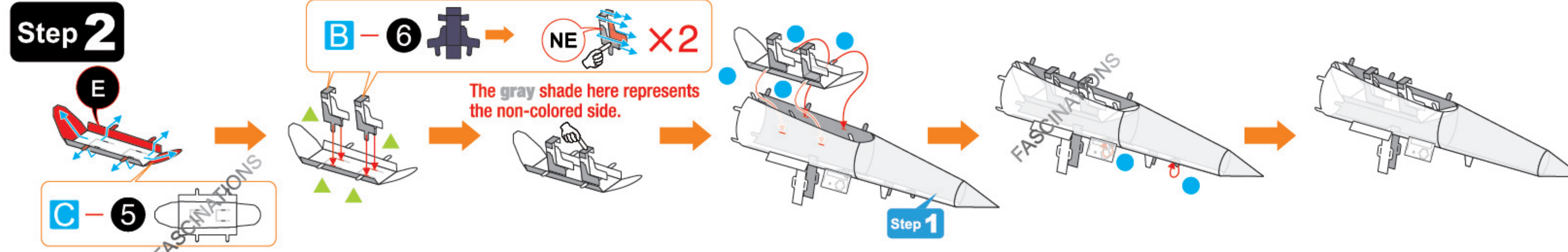
In order to avoid possible injury from sharp edges, please carefully discard the metal sheets after parts have been removed.

ASSEMBLY FLOW CHART

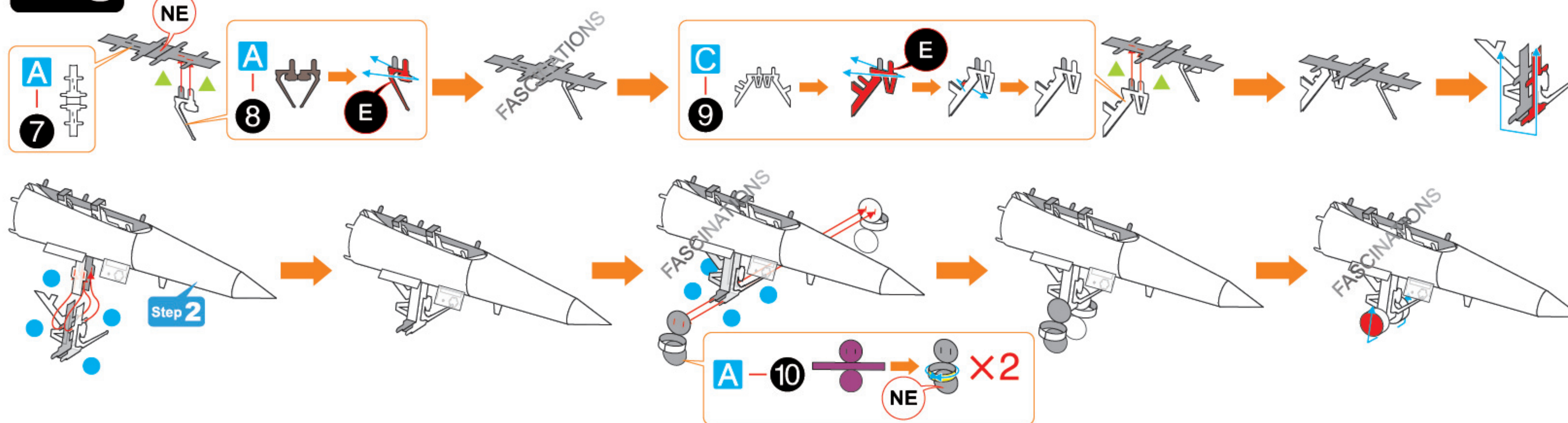
Step 1



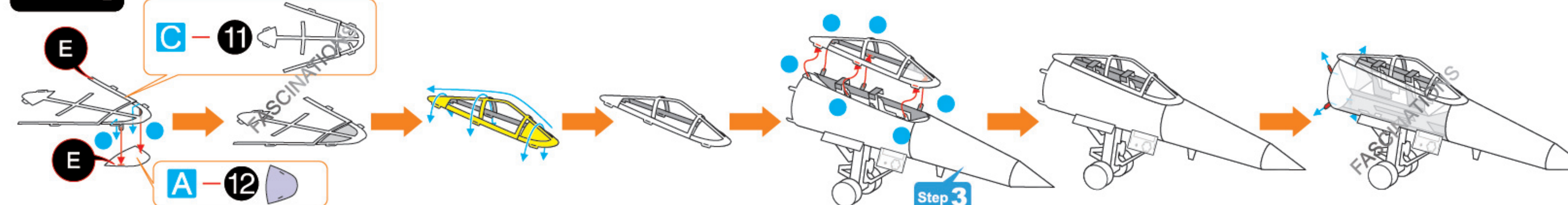
Step 2



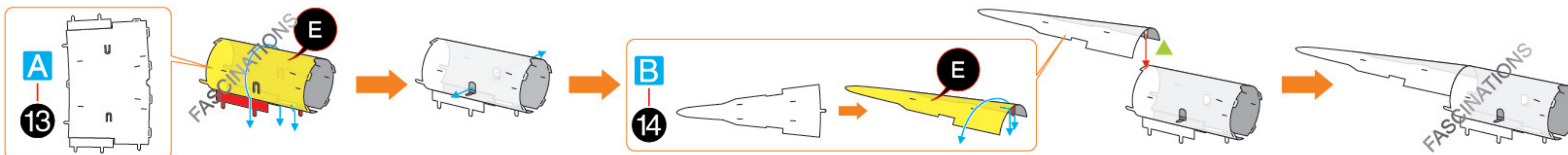
Step 3



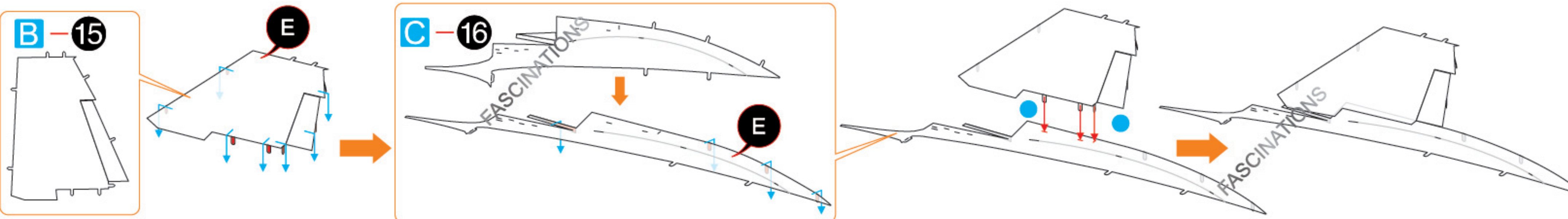
Step 4



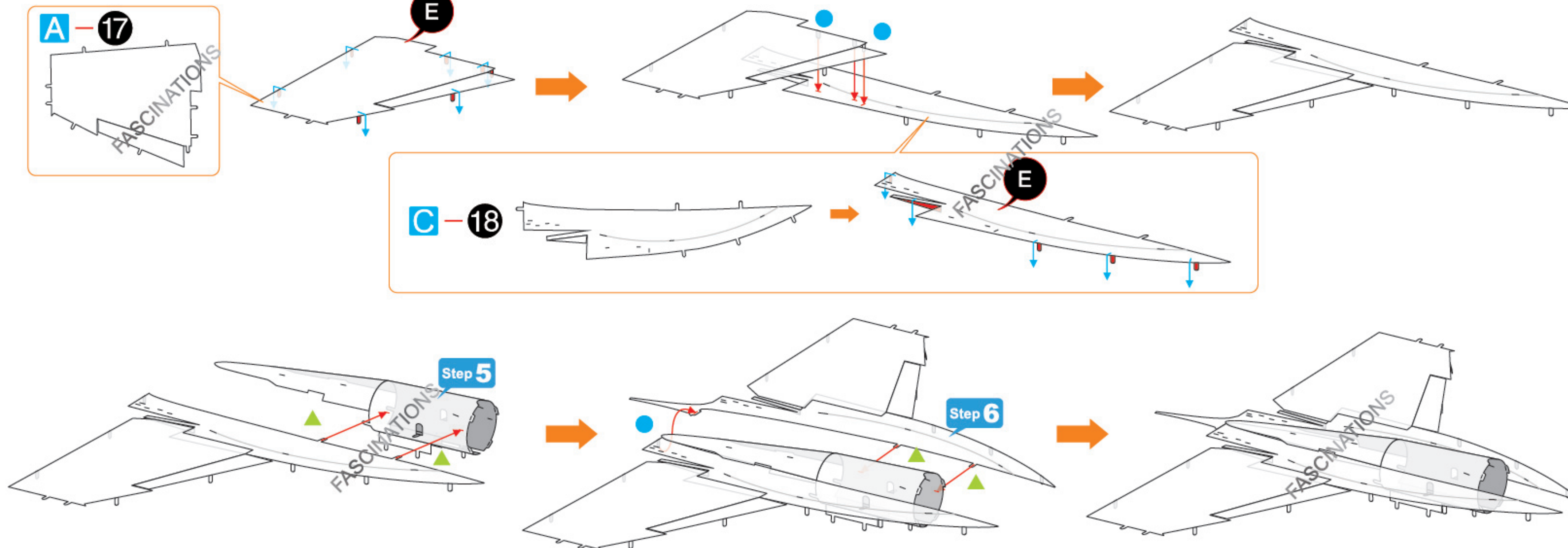
Step 5



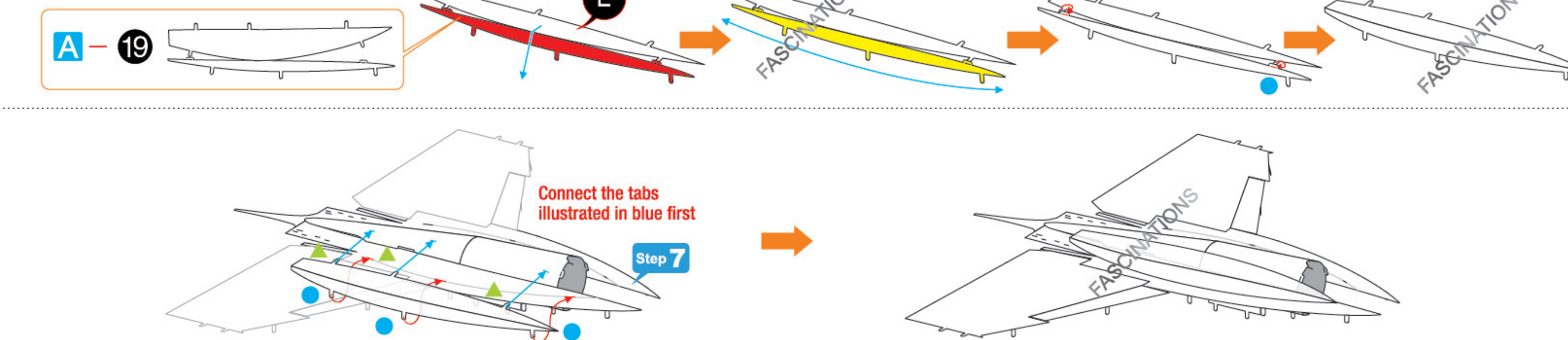
Step 6



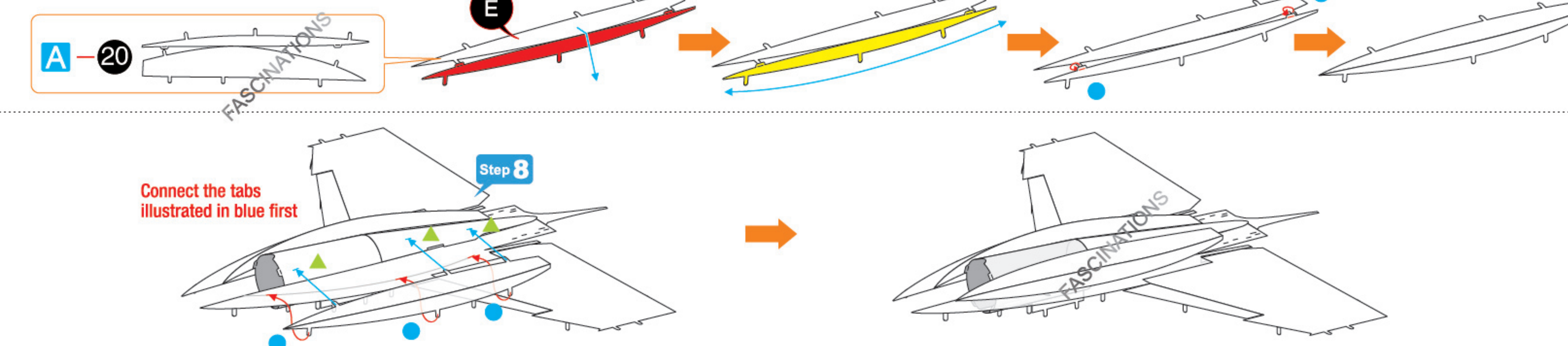
Step 7



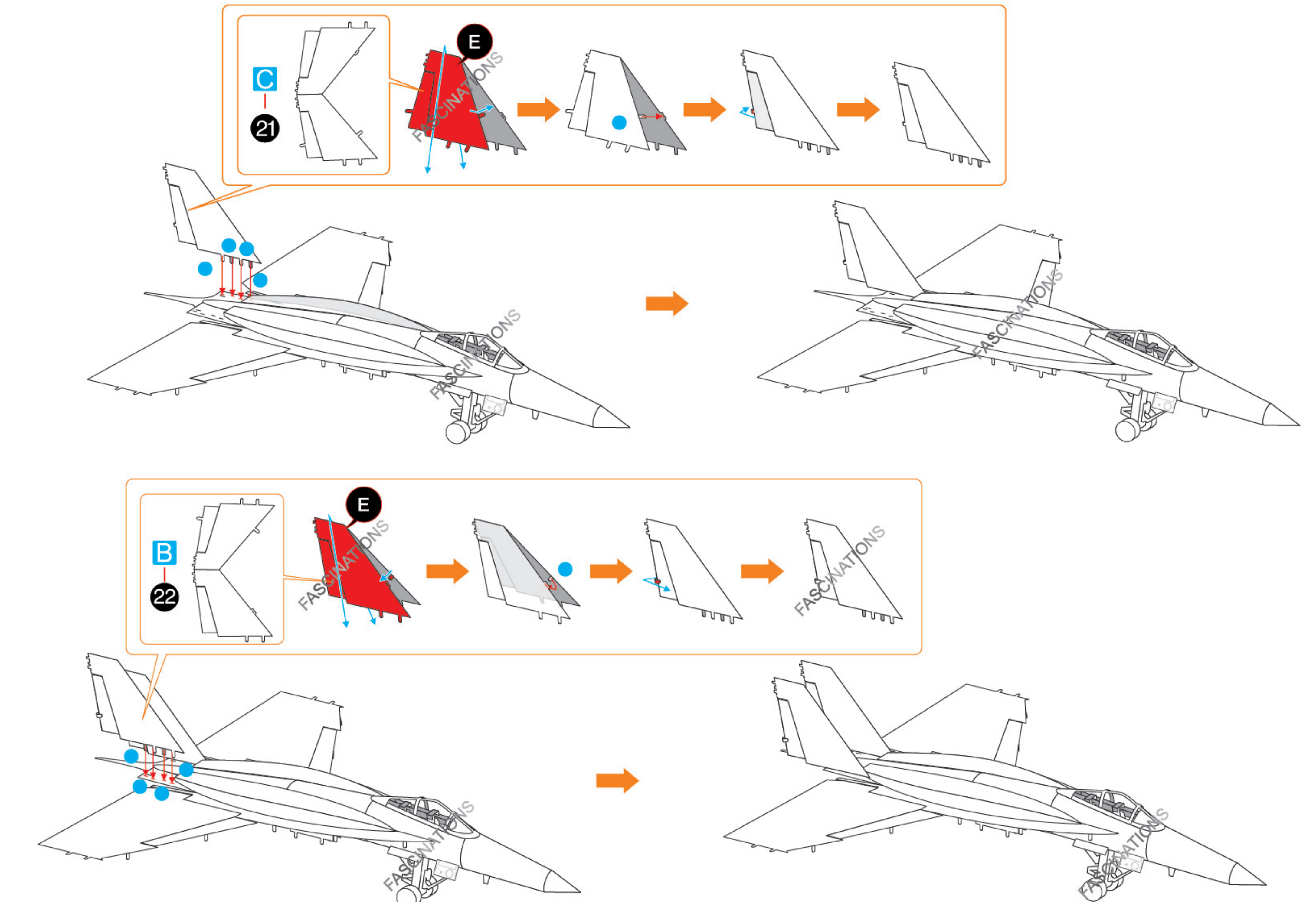
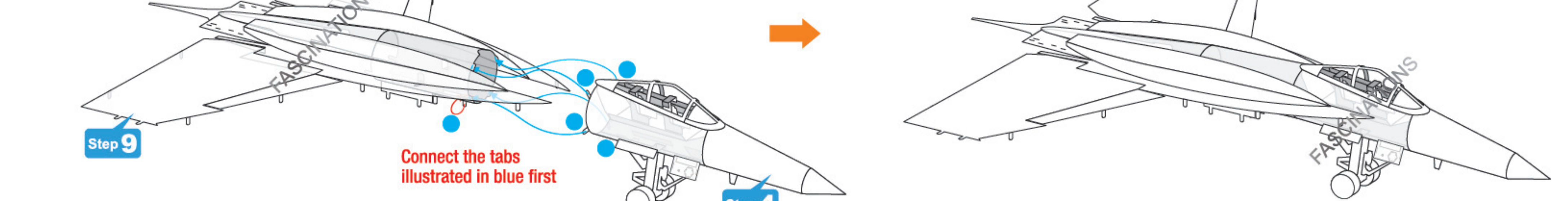
Step 8



Step 9



Step 10



Step 11

