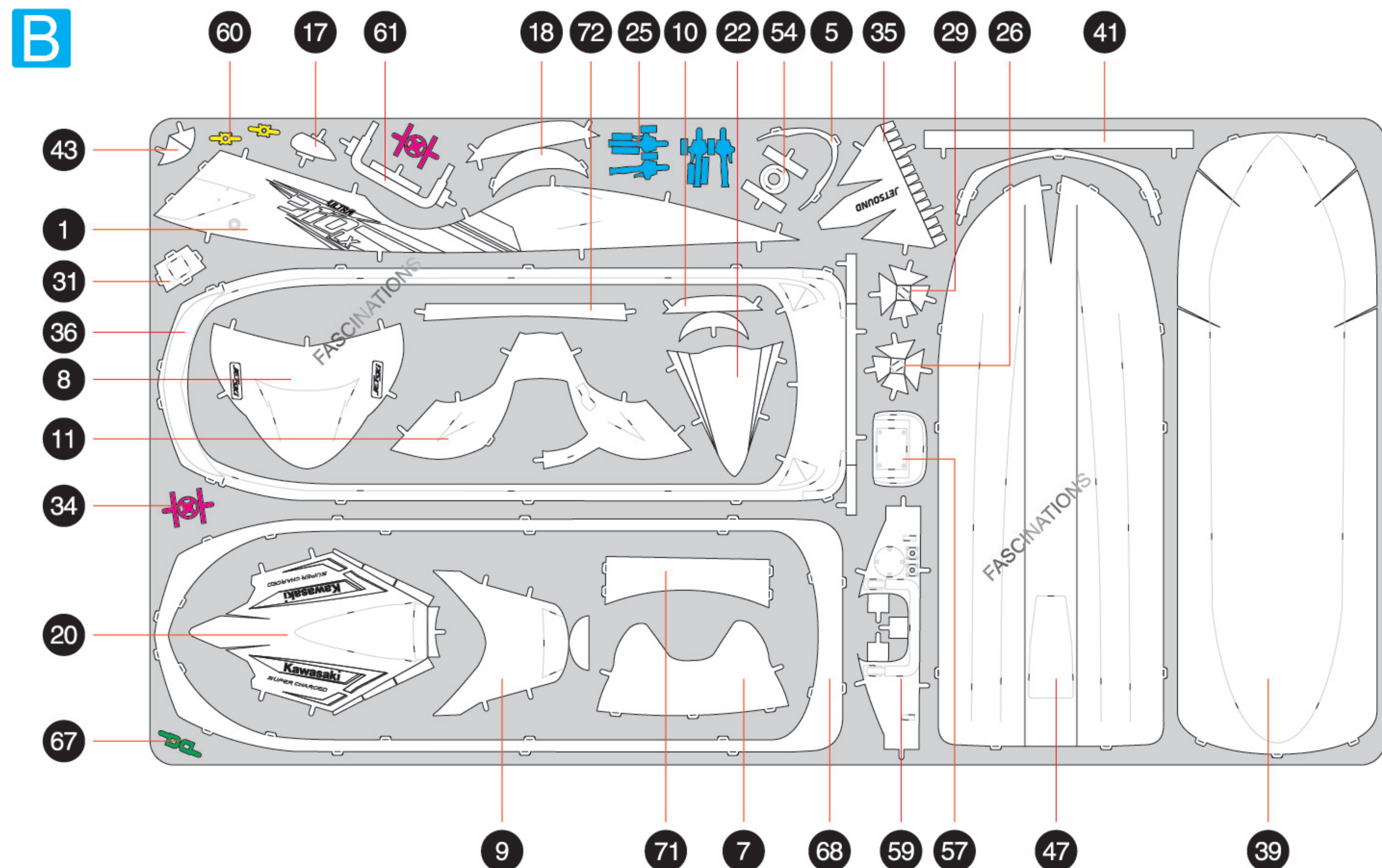
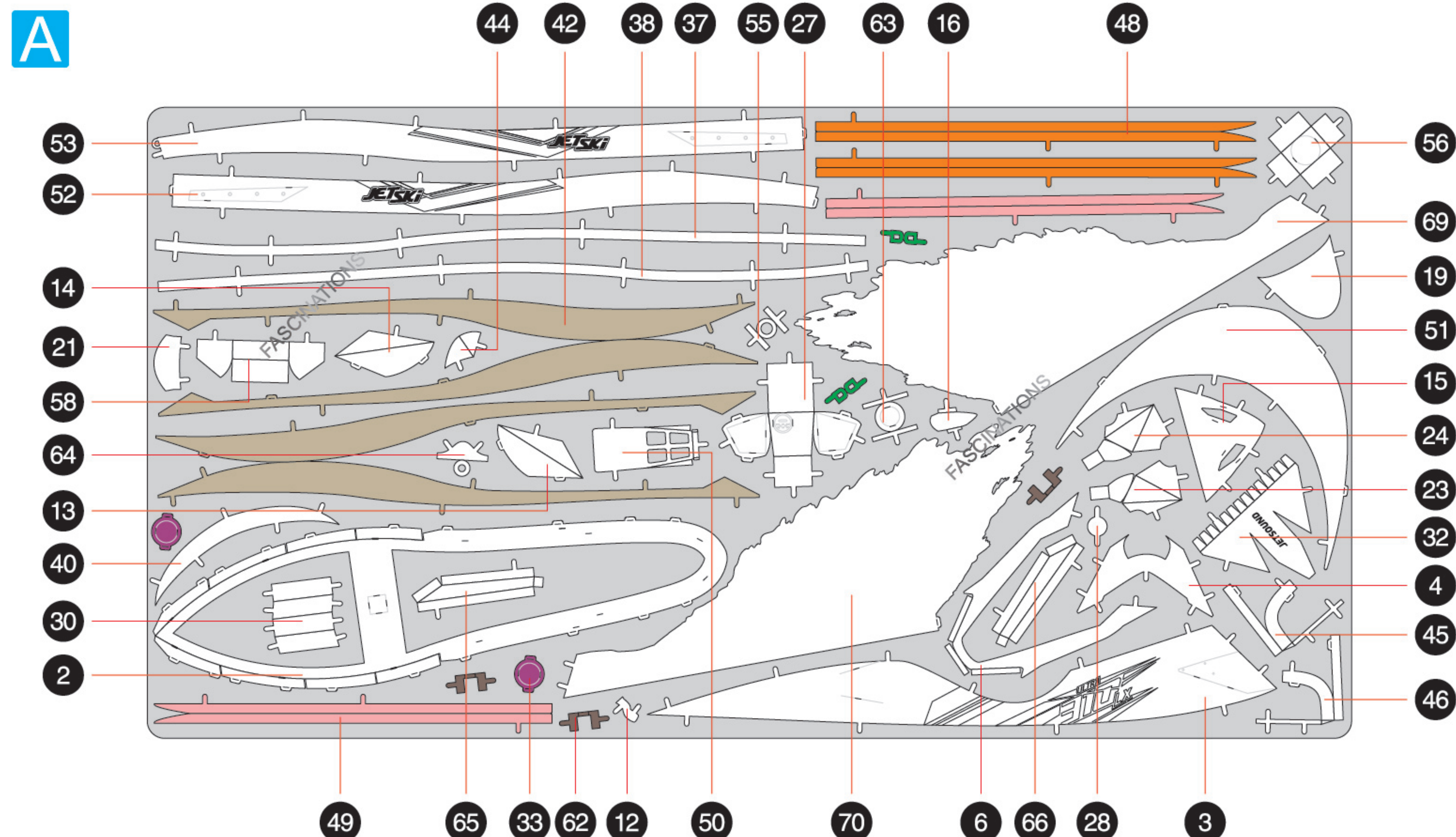




It is highly recommended that you visit
www.metalearth.com/360/icx144
to see the completed model before assembling your own

METAL SHEETS

Parts with same color are duplicates

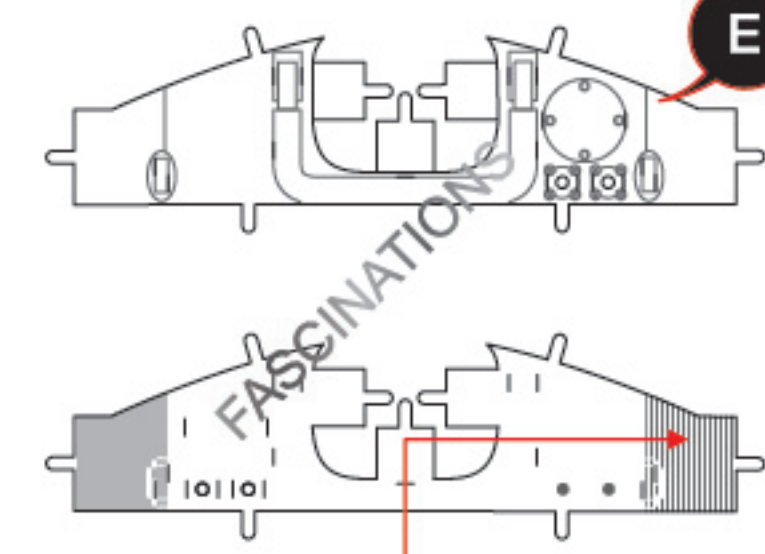


ICX144

JET SKI® ULTRA® 310LX

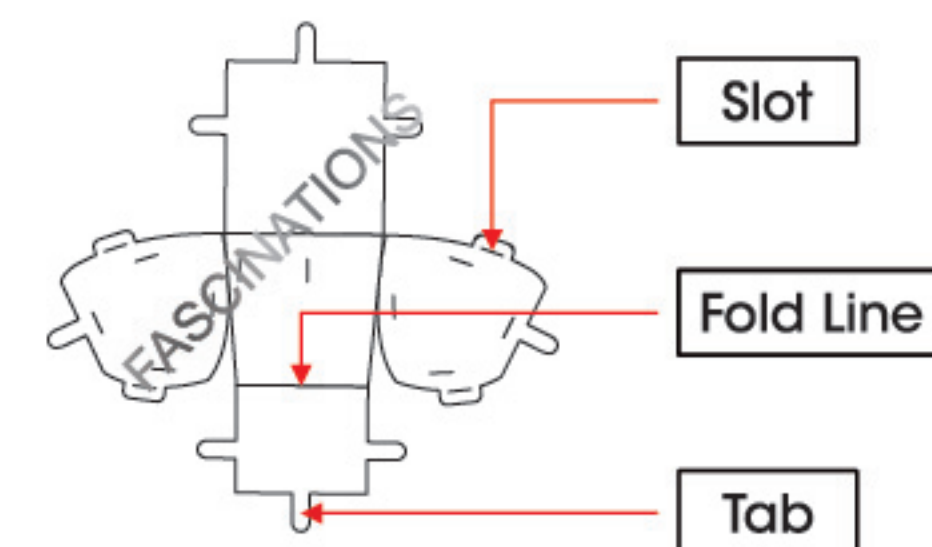
TO CREATE THE BEST CONNECTIONS

B-59



Consider these engraved stripes as supporting features for the bend

A-27



Legends:

E Engraved/ Color side

NE Non - engraved/ Silver side

Attention point

Insert tab and bend 90 degrees

Insert tab and twist 90 degrees

Assembly tip:

If needed, slightly twist tabs to hold parts together then untwist and bend them down for a nice finish.



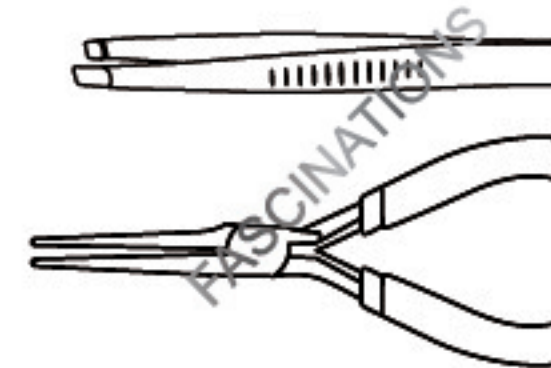
In order to avoid possible injury from sharp edges, please carefully discard the metal sheets after parts have been removed.

Recommended tools:

- Wire cutters: helpful for taking parts from the metal sheets.

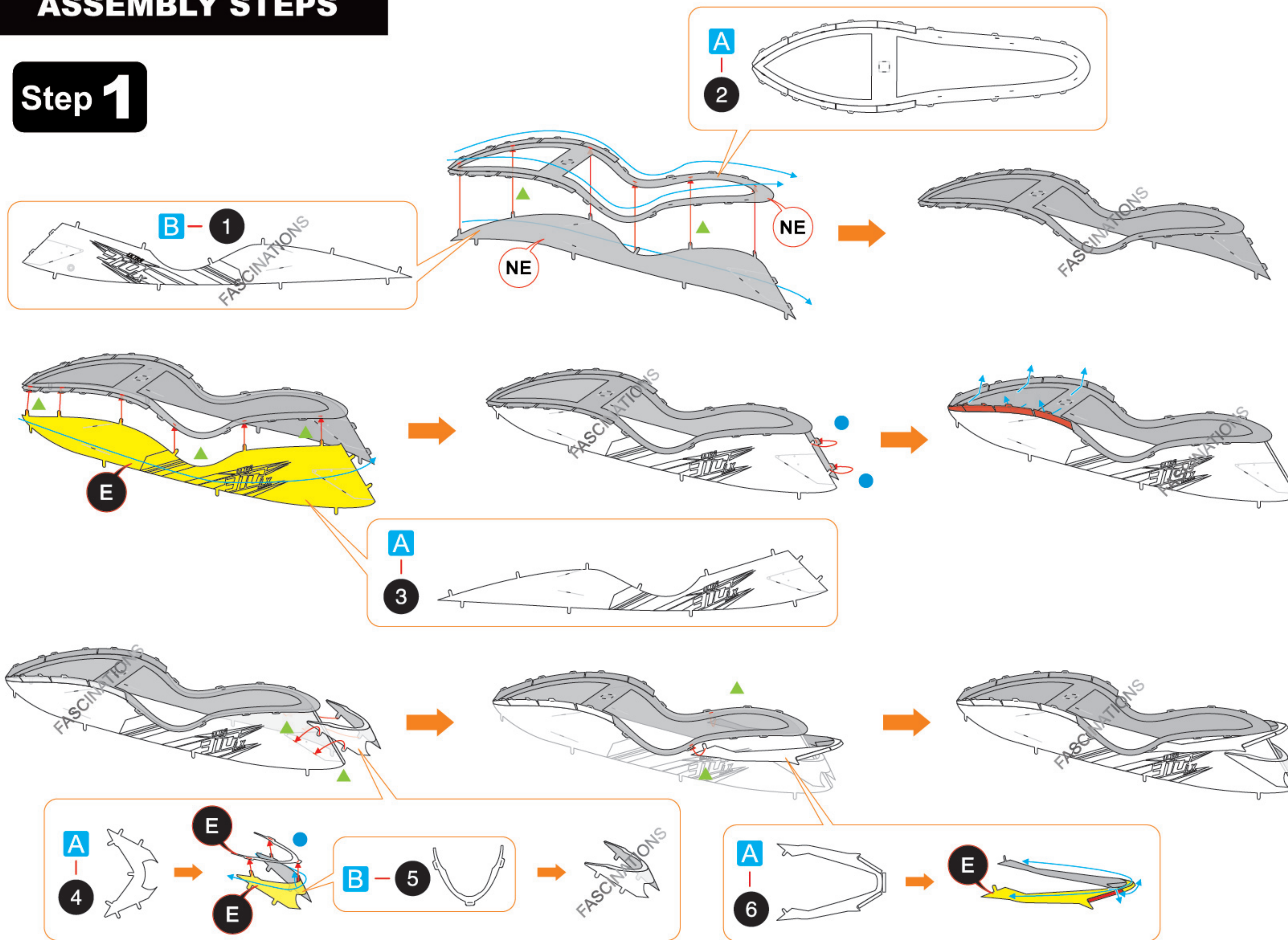


- Tweezers or needle nose pliers: helpful for folding parts, bending and twisting tabs.



ASSEMBLY STEPS

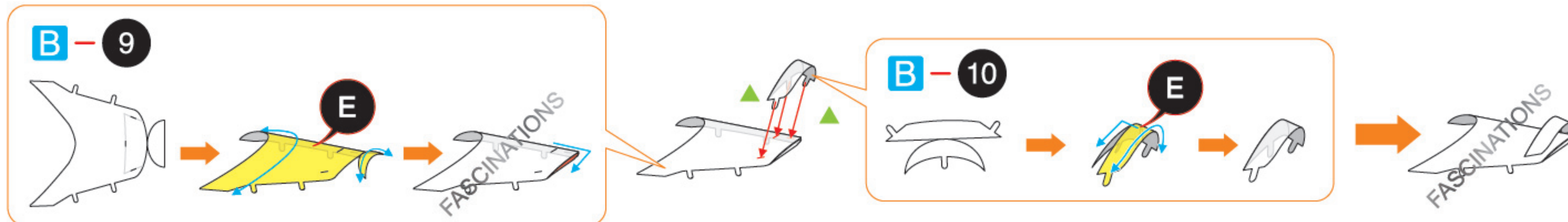
Step 1



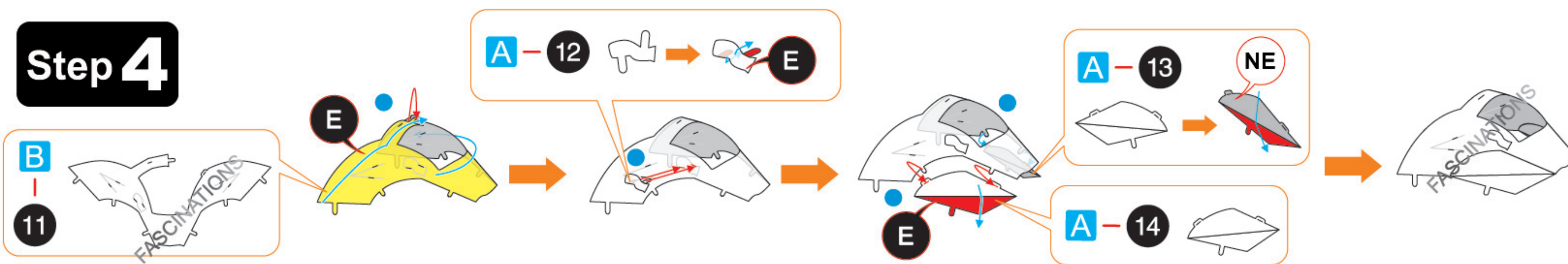
Step 2



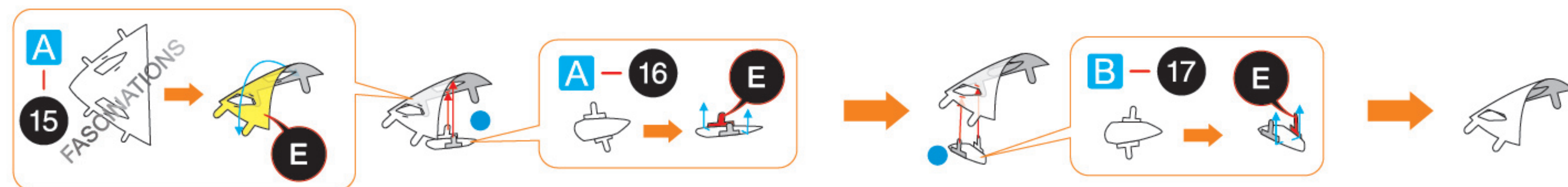
Step 3



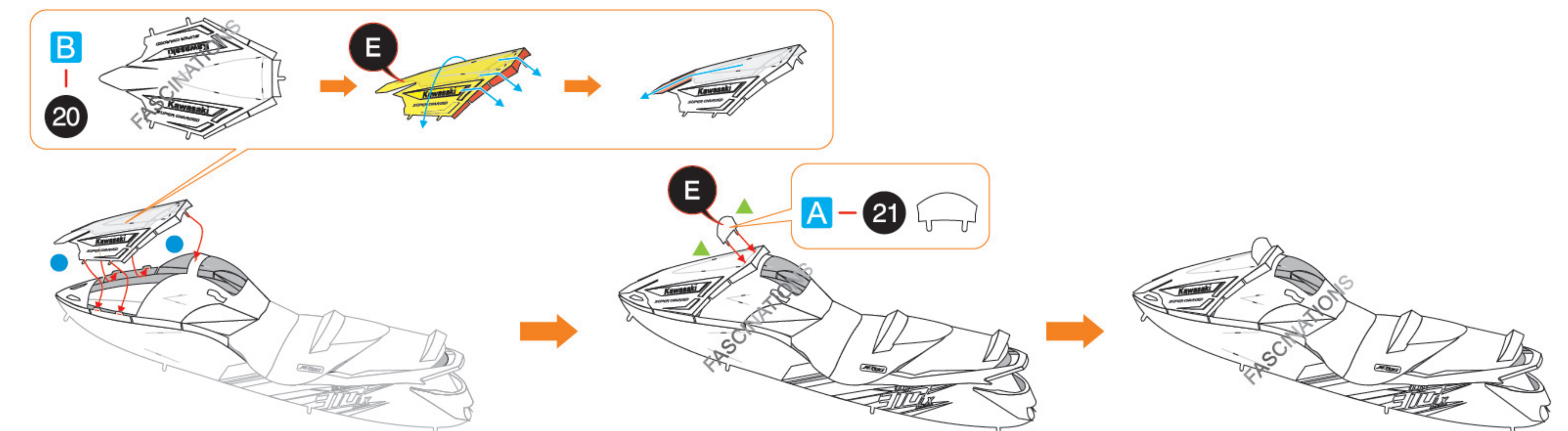
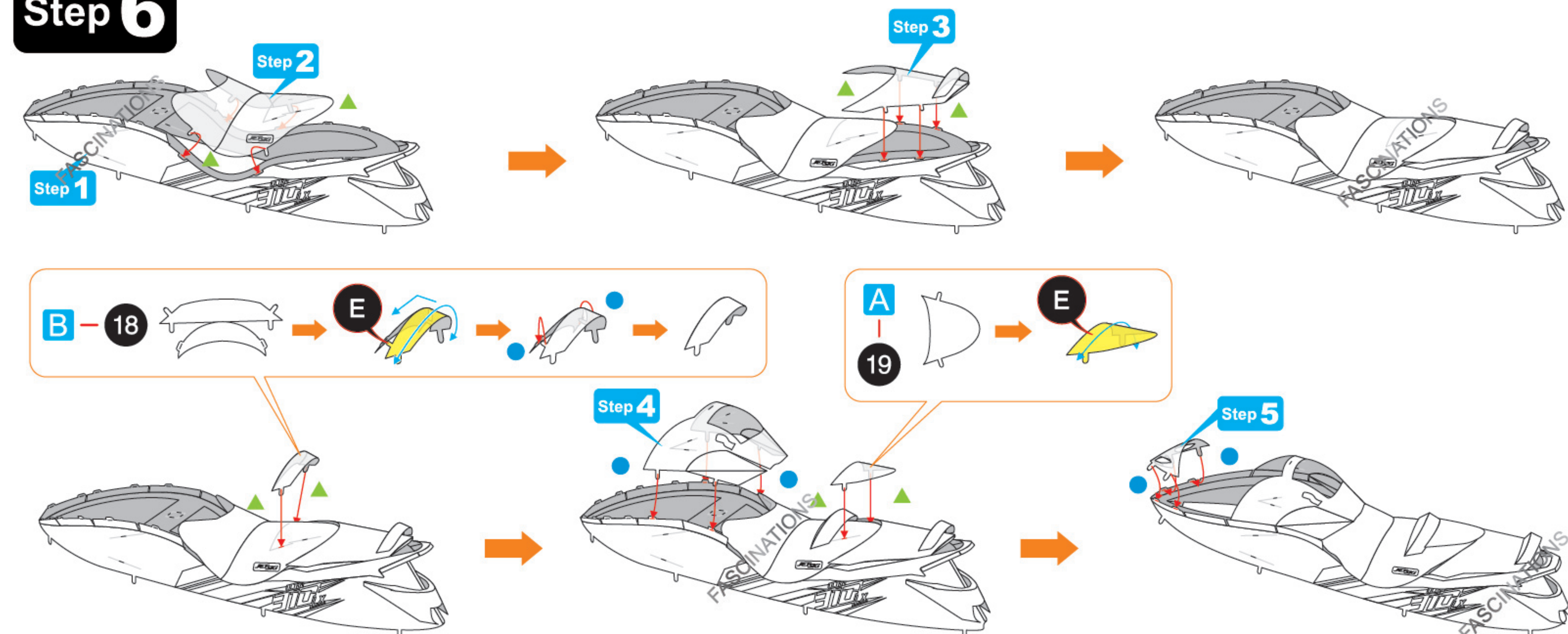
Step 4



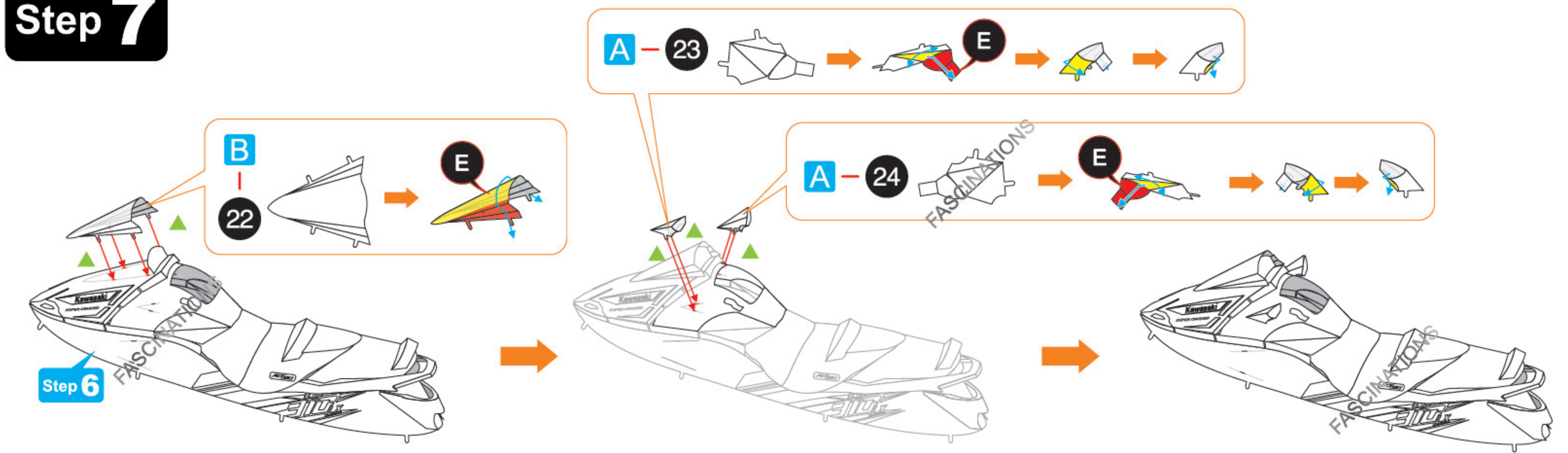
Step 5



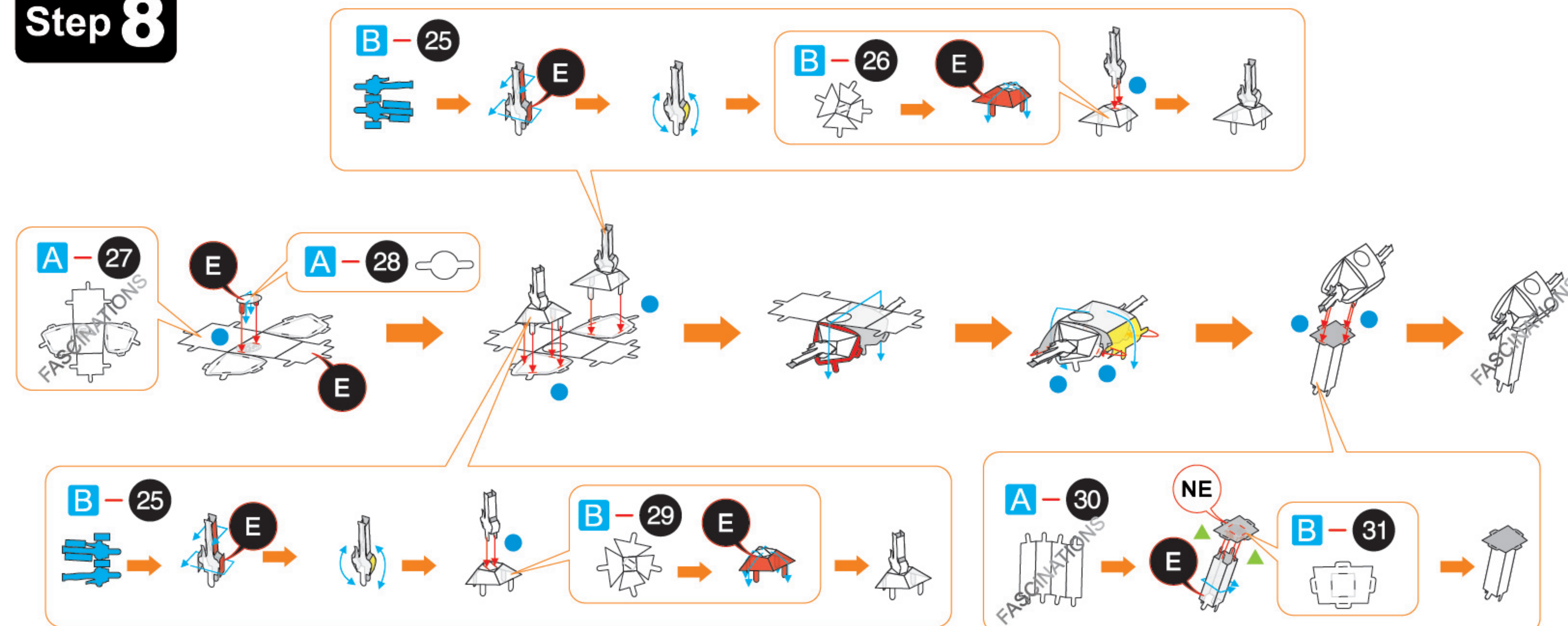
Step 6



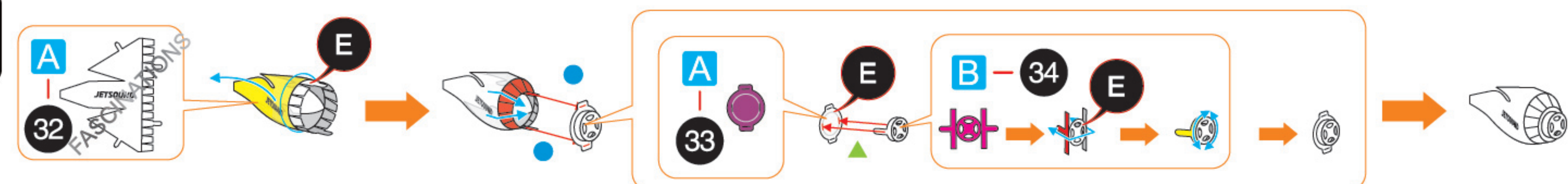
Step 7



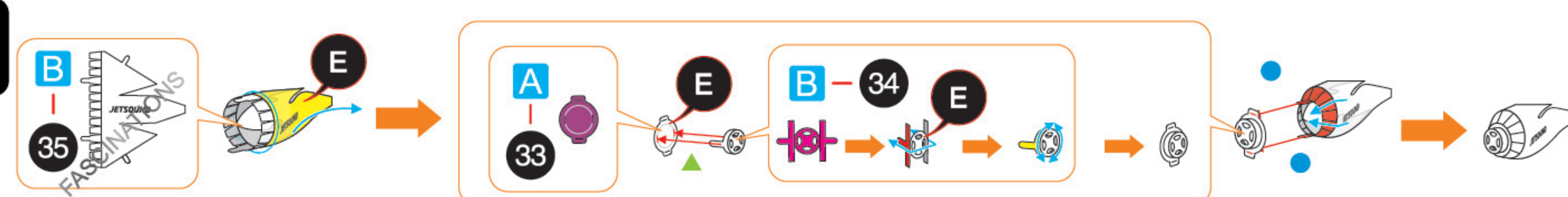
Step 8



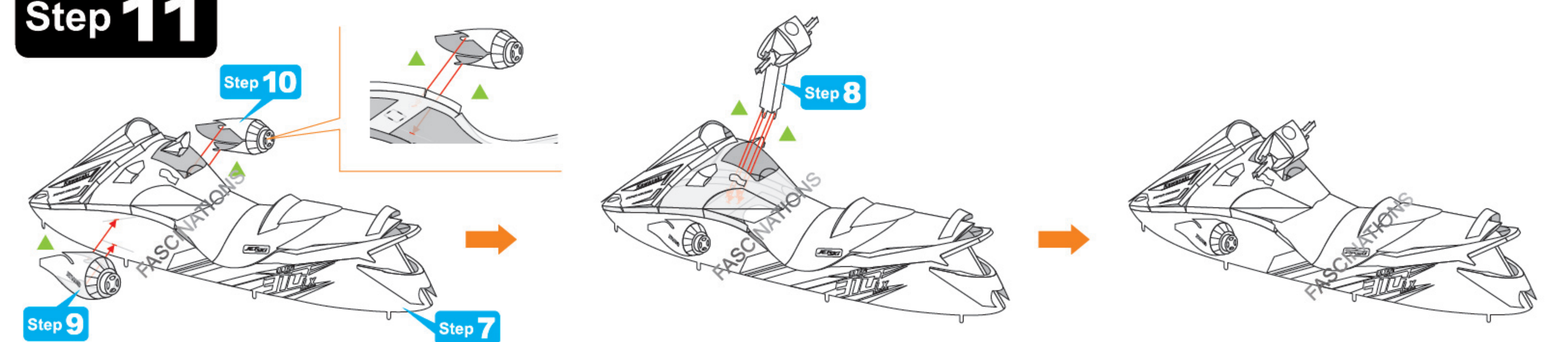
Step 9



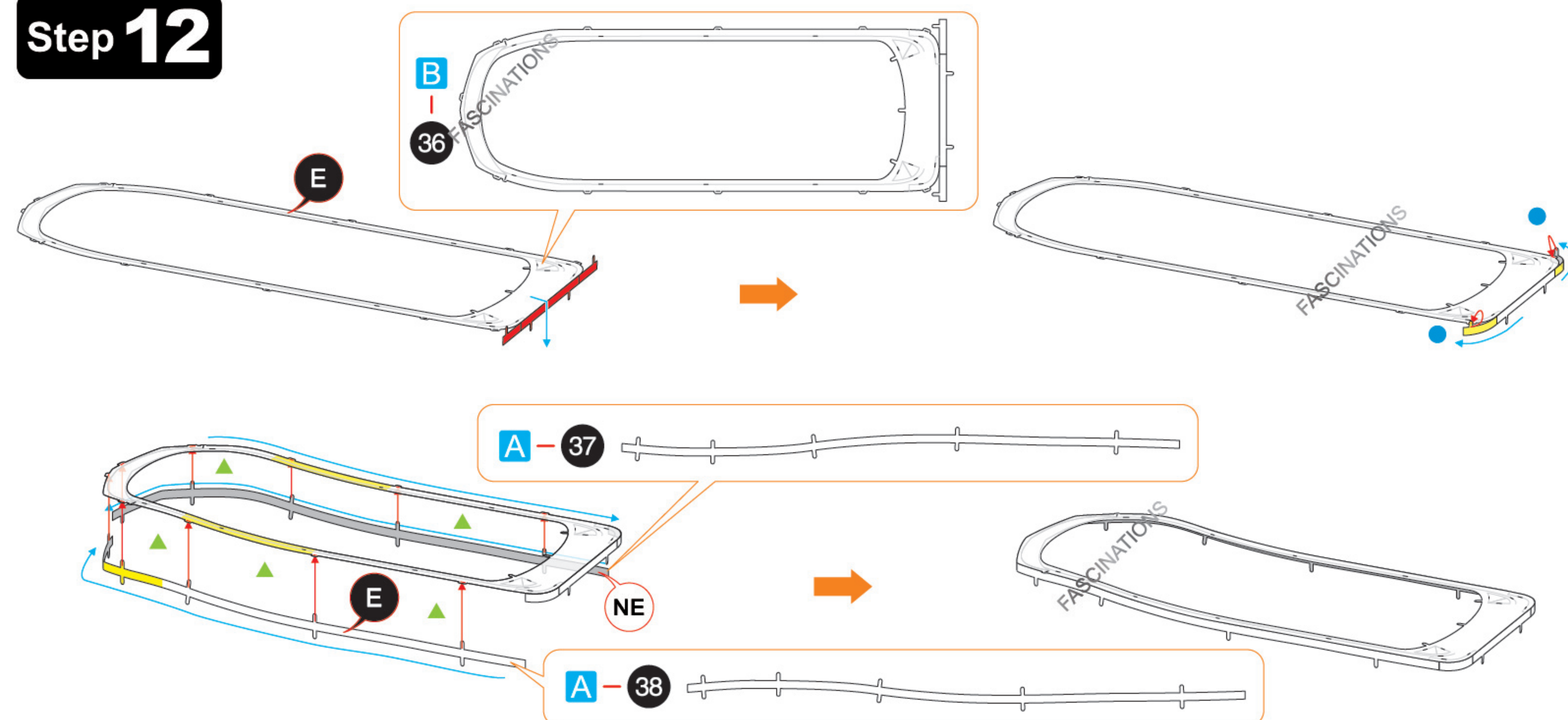
Step 10



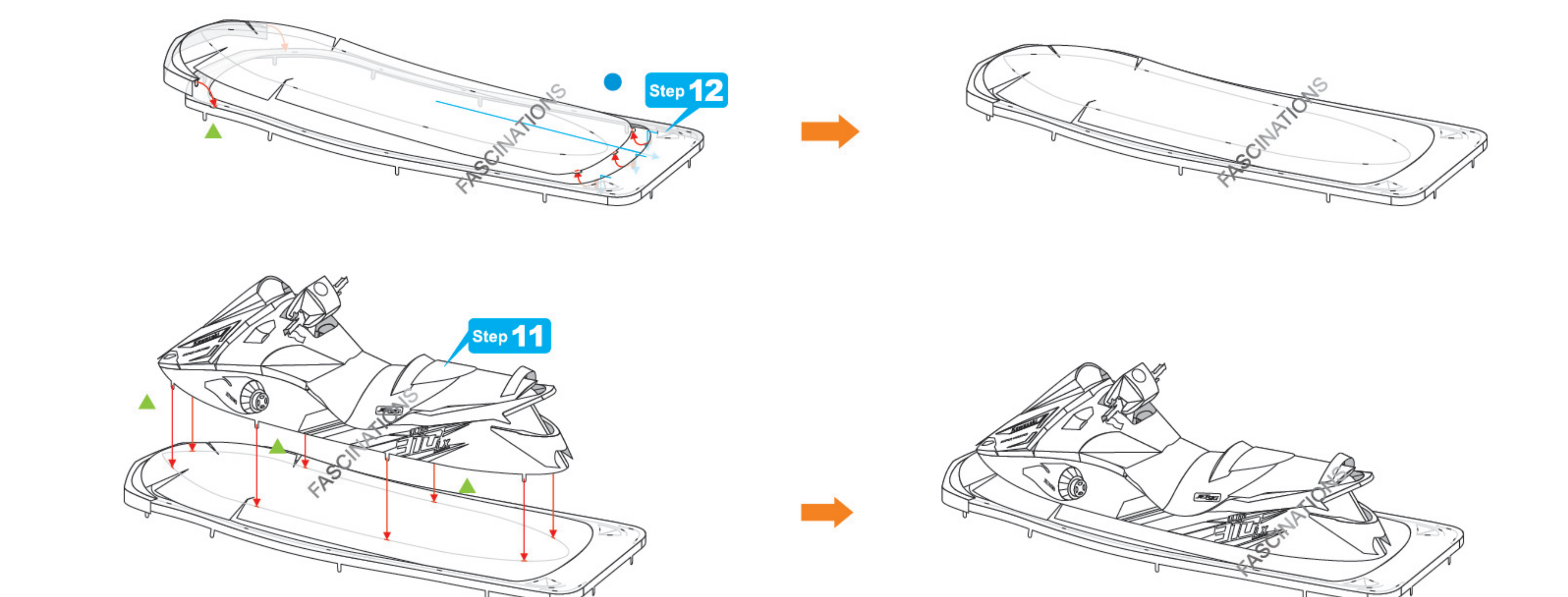
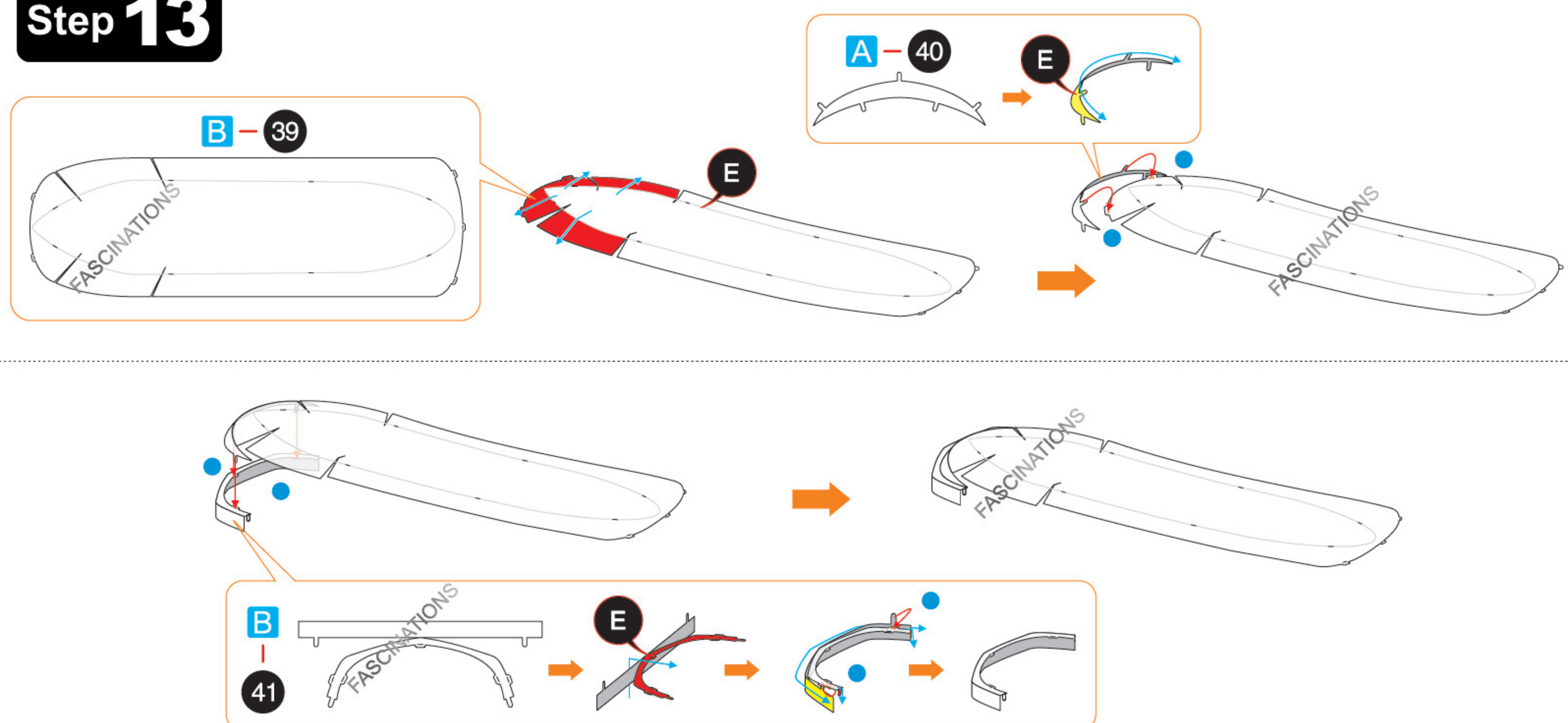
Step 11



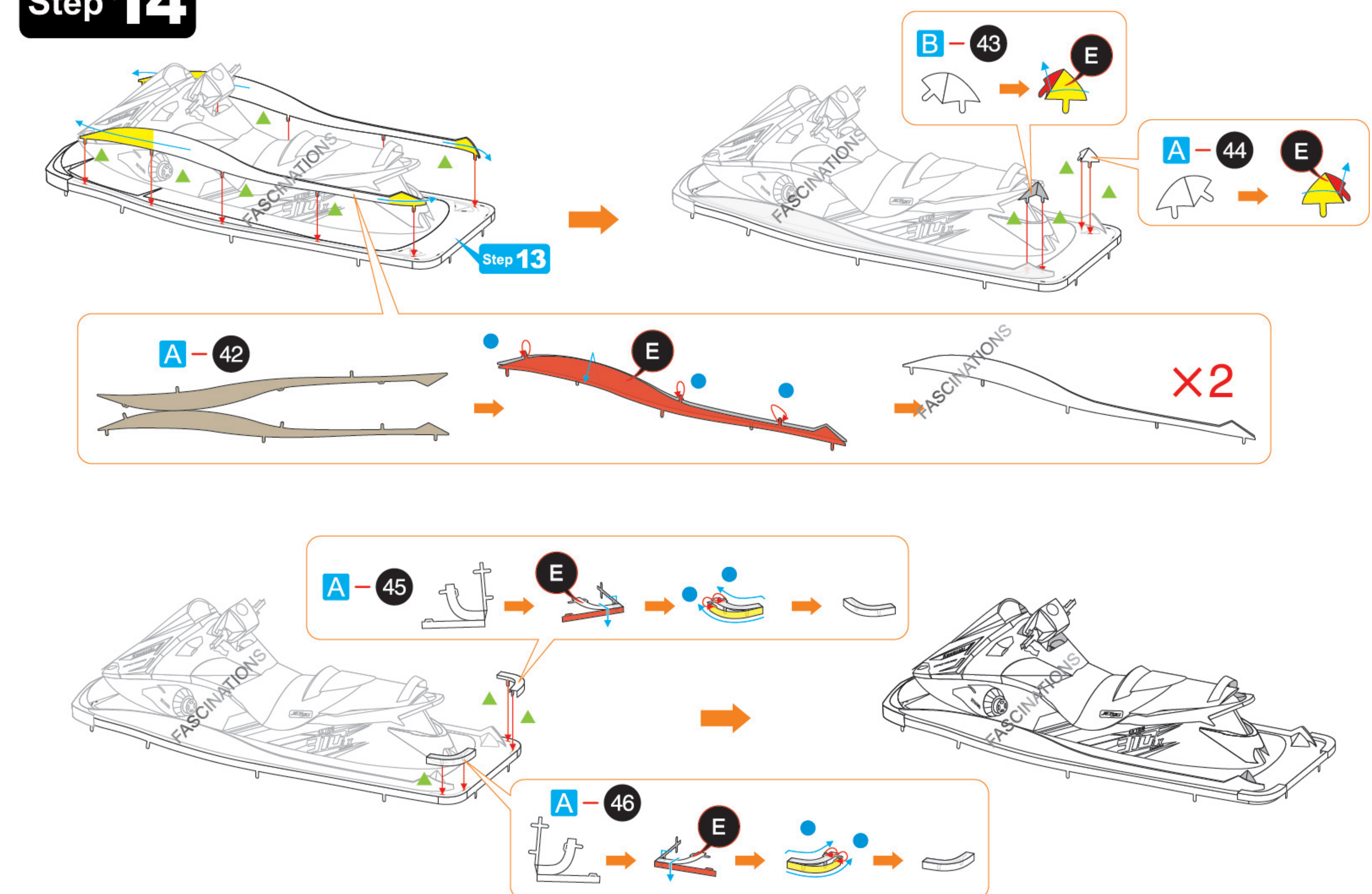
Step 12



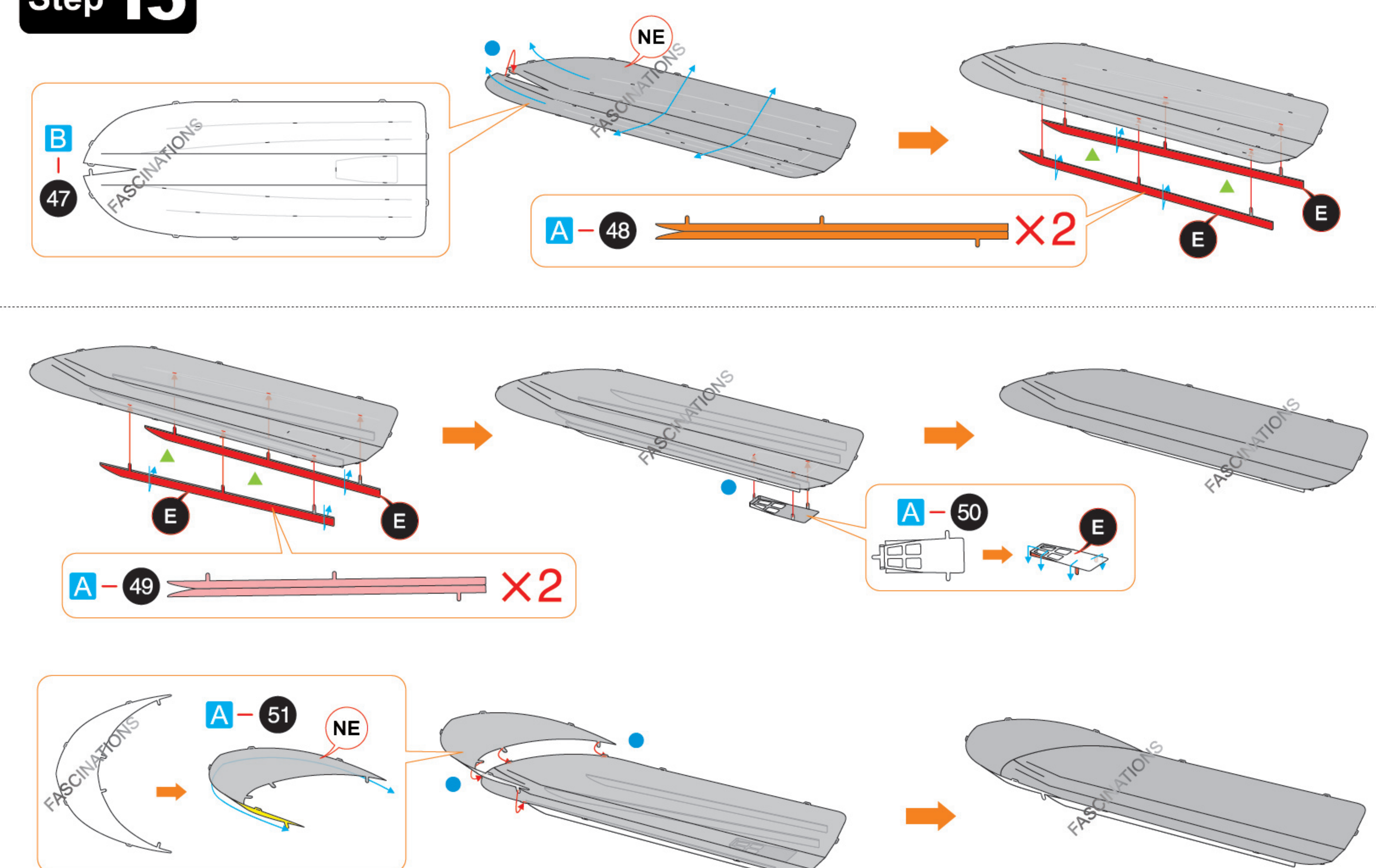
Step 13



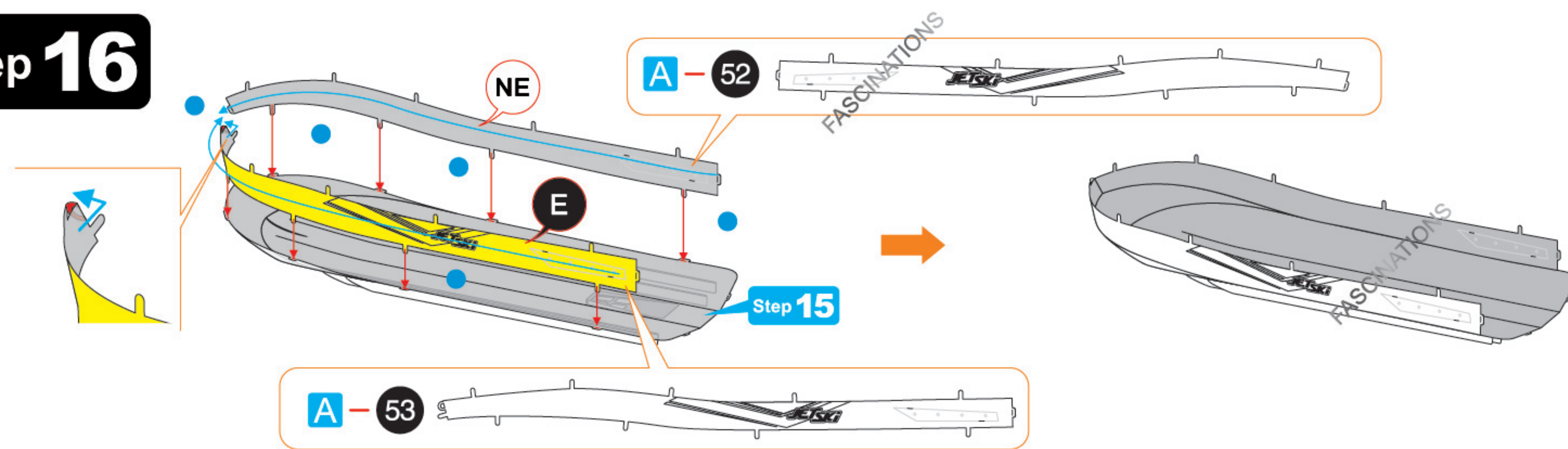
Step 14



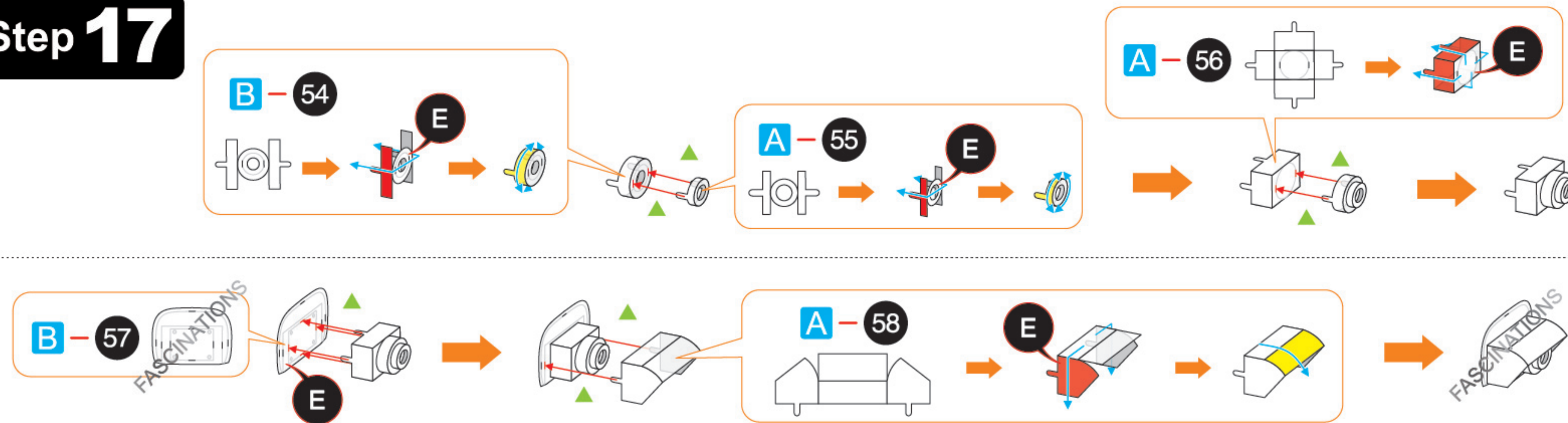
Step 15



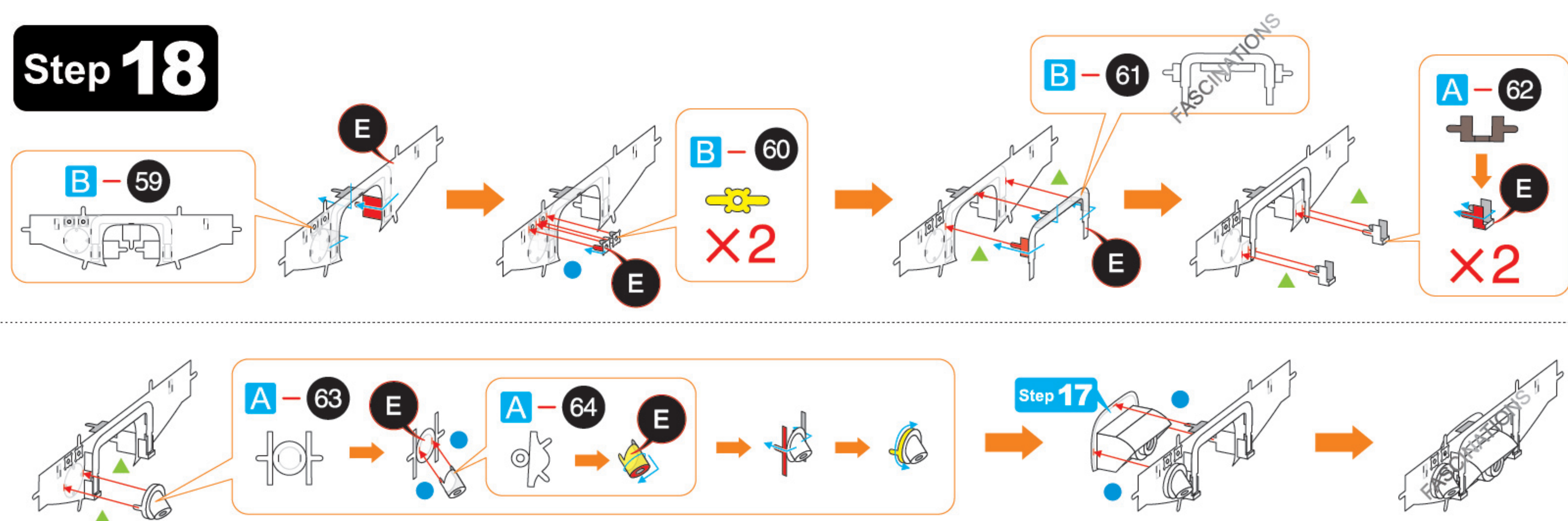
Step 16



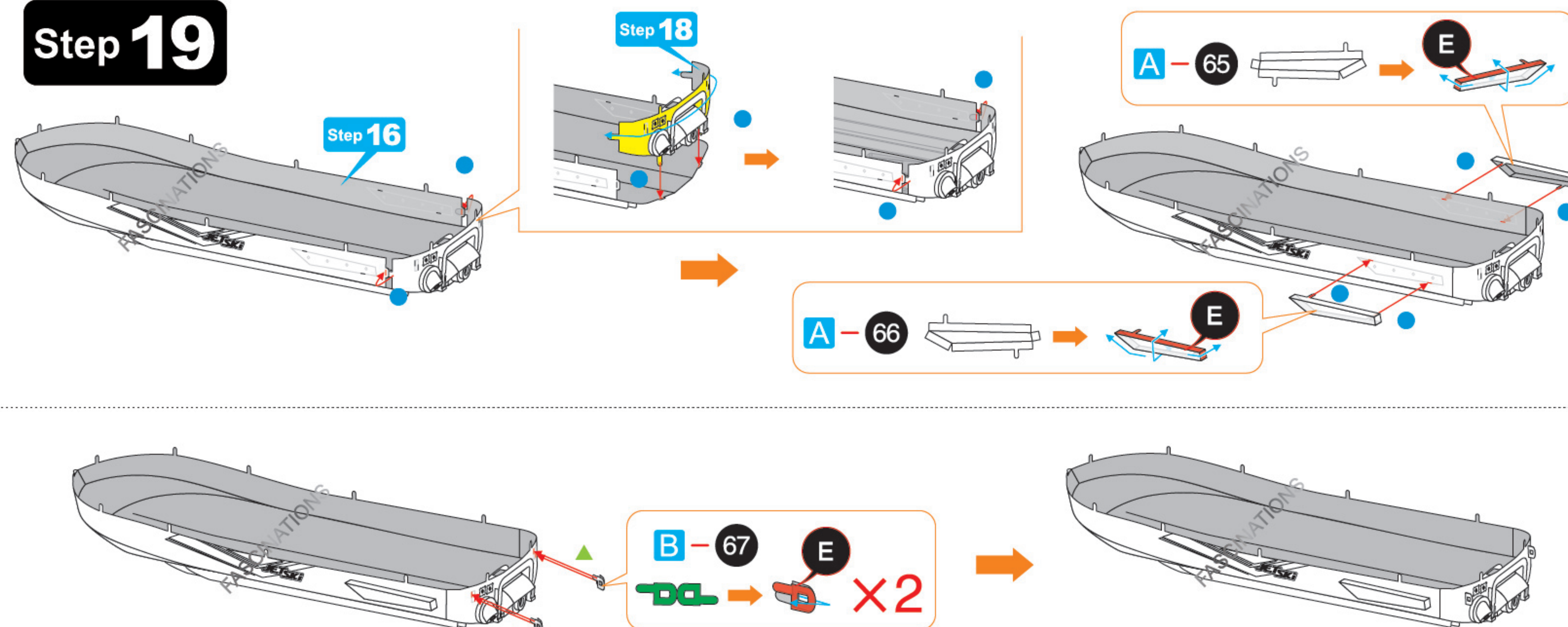
Step 17



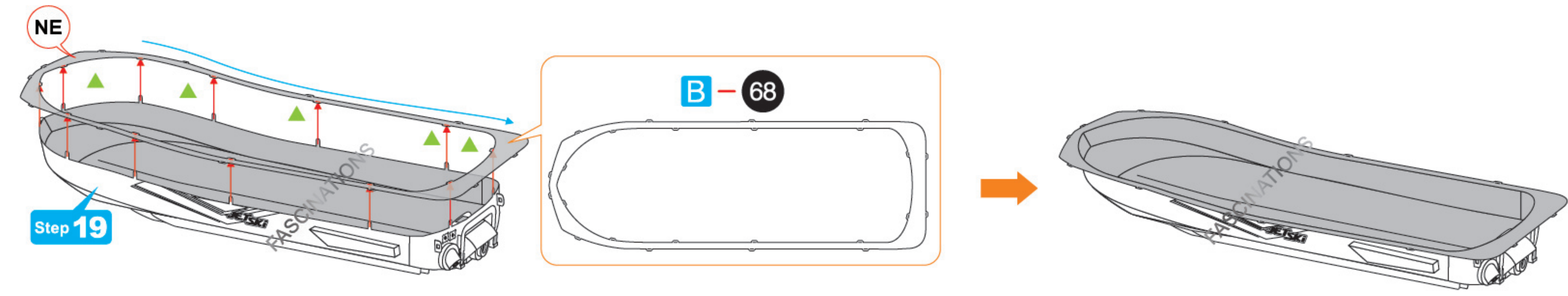
Step 18



Step 19



Step 20



Step 21

