

Hogwarts™ Express with Track

MMS477



It is highly recommended that you visit www.metal-earth.com/360/mms477 to see the completed model before assembling your own

Legends:

- E** Engraved /Color side
- NE** Non-engraved /Silver side
- Attention point
- Insert tab and bend 90 degrees
- Insert tab and twist 90 degrees

Assembly tip:

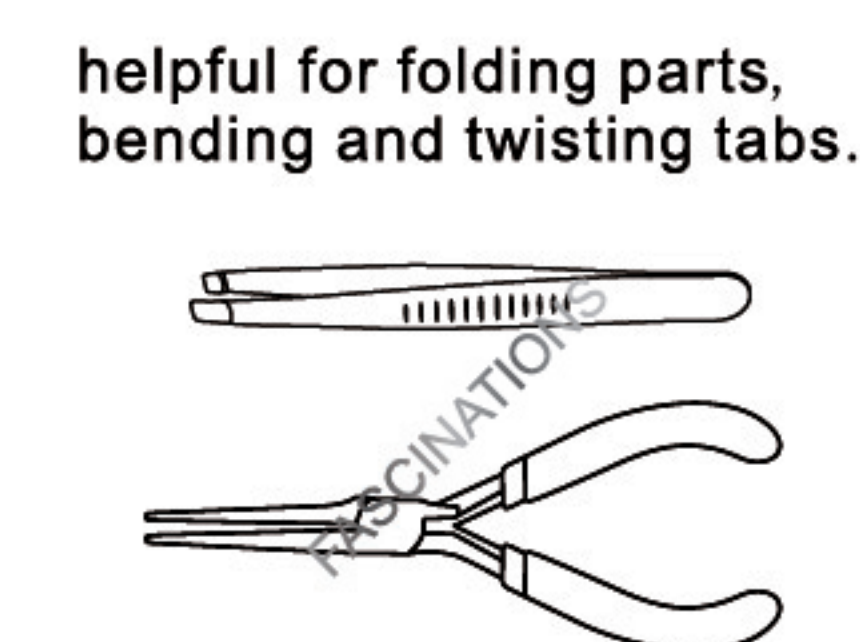
If needed, slightly twist tabs to hold parts together then untwist and bend them down for a nice finish

Recommended tools:

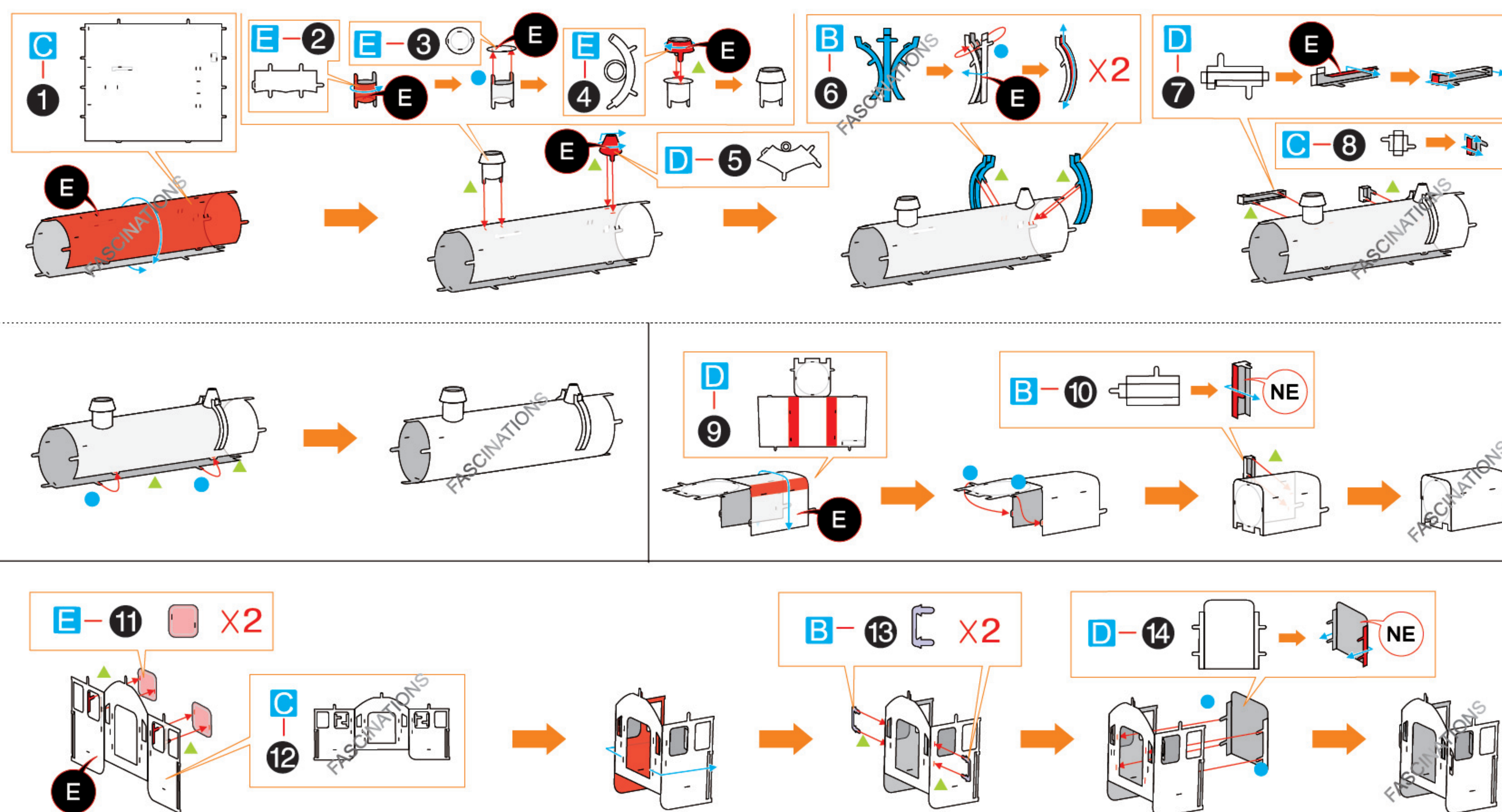
-Wire cutters: helpful for taking parts from the metal sheets.



-Tweezers or needle nose pliers:



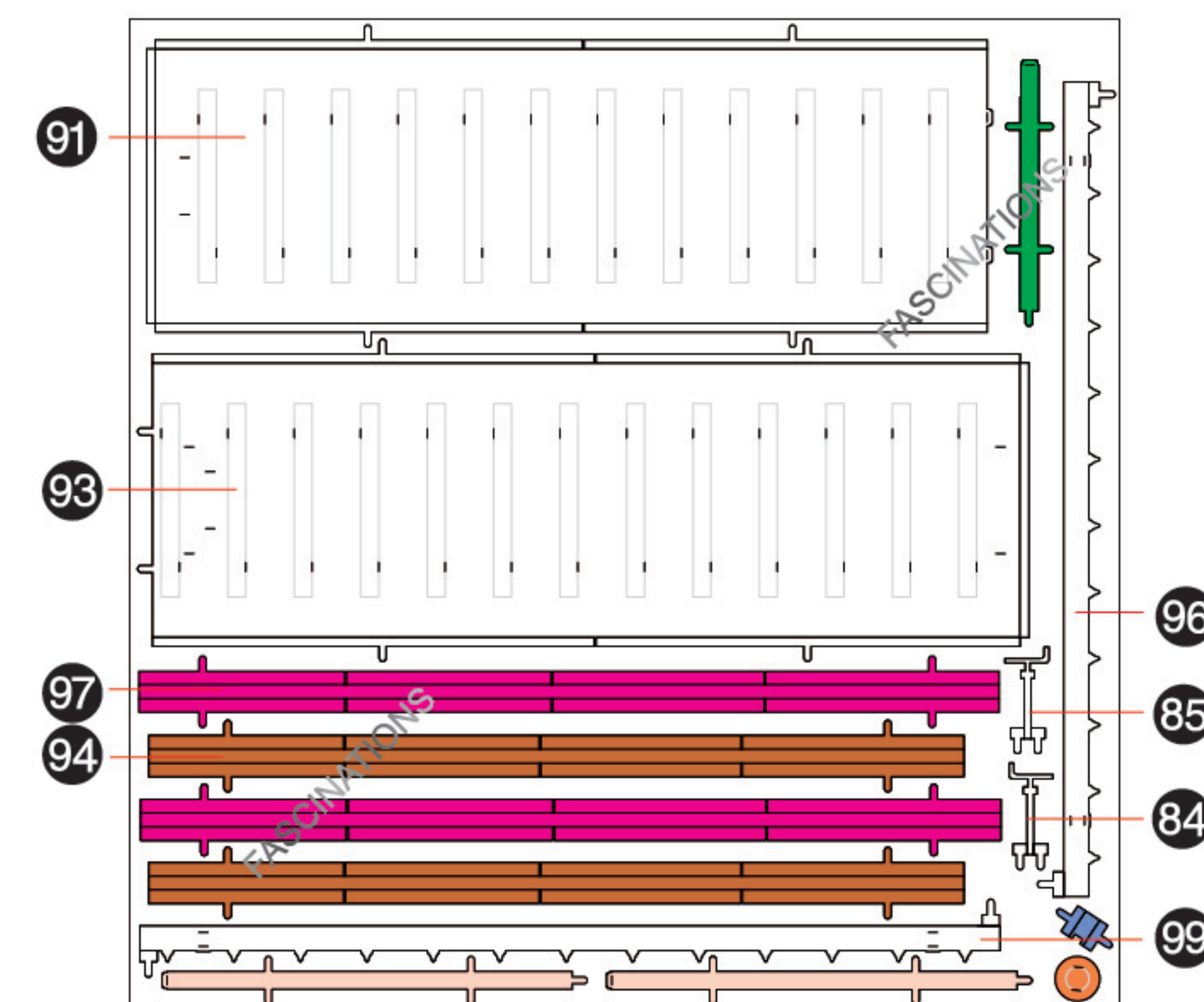
Assembly Flow Chart



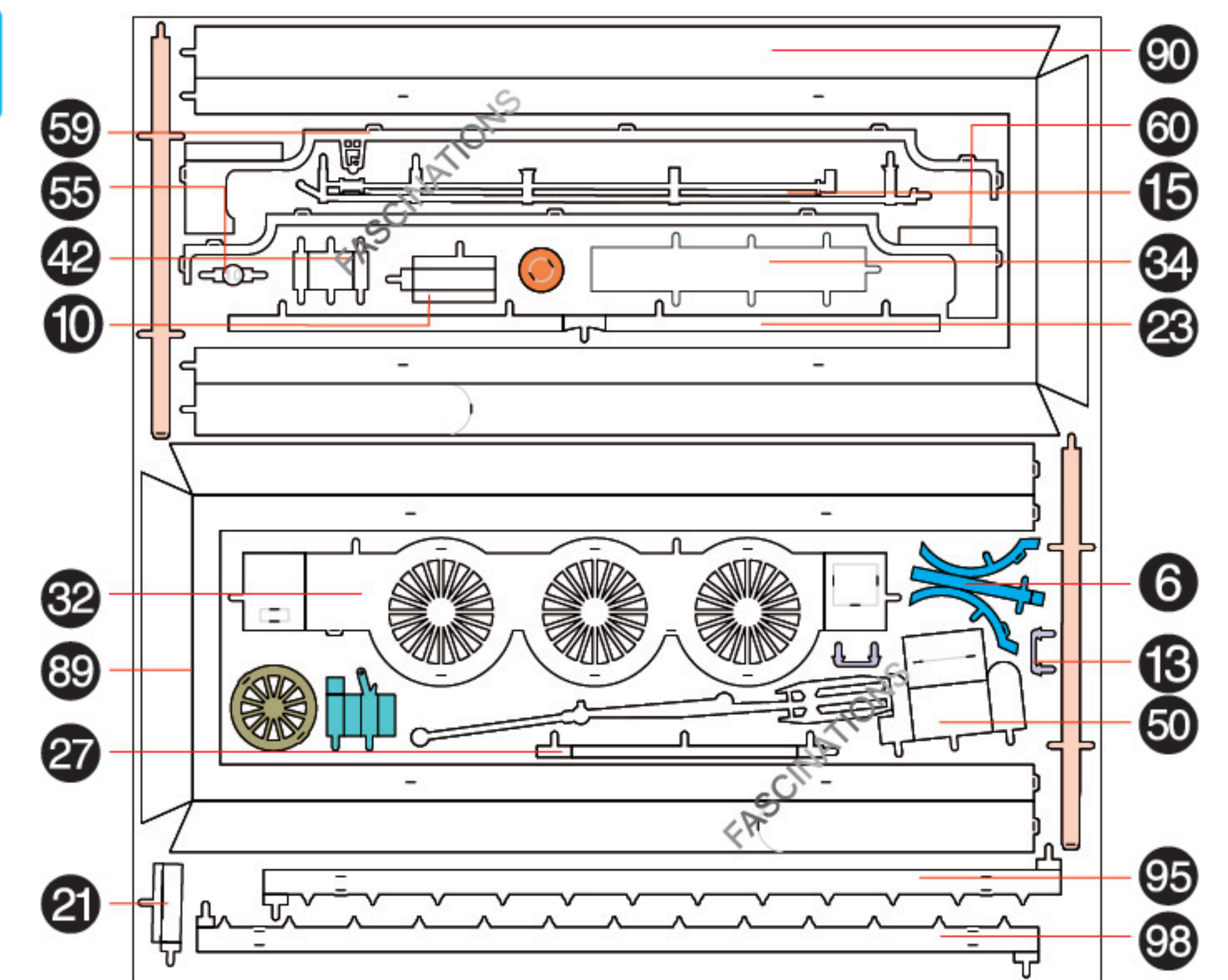
Parts that are in the same color are duplicates

Metal sheets

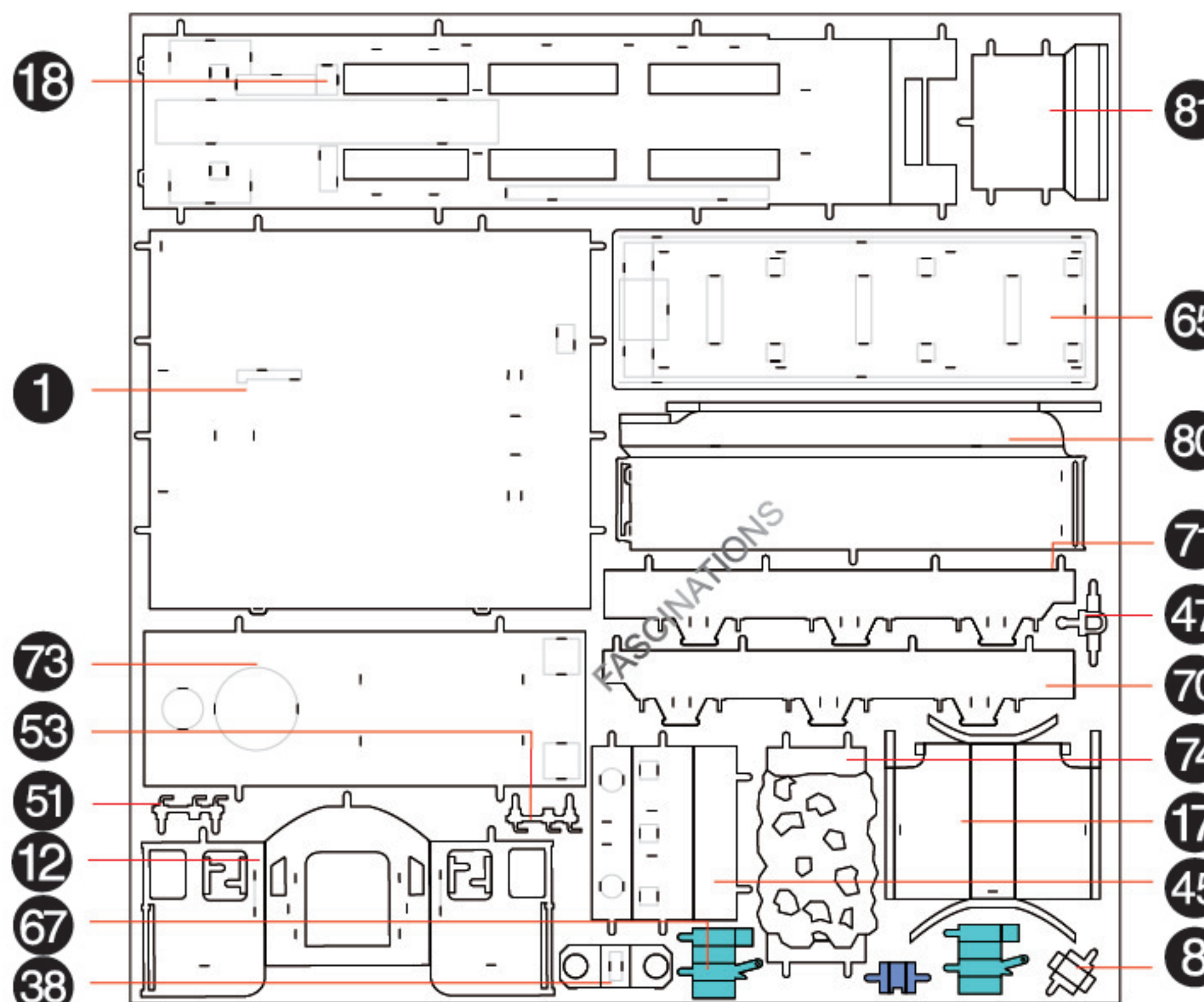
A



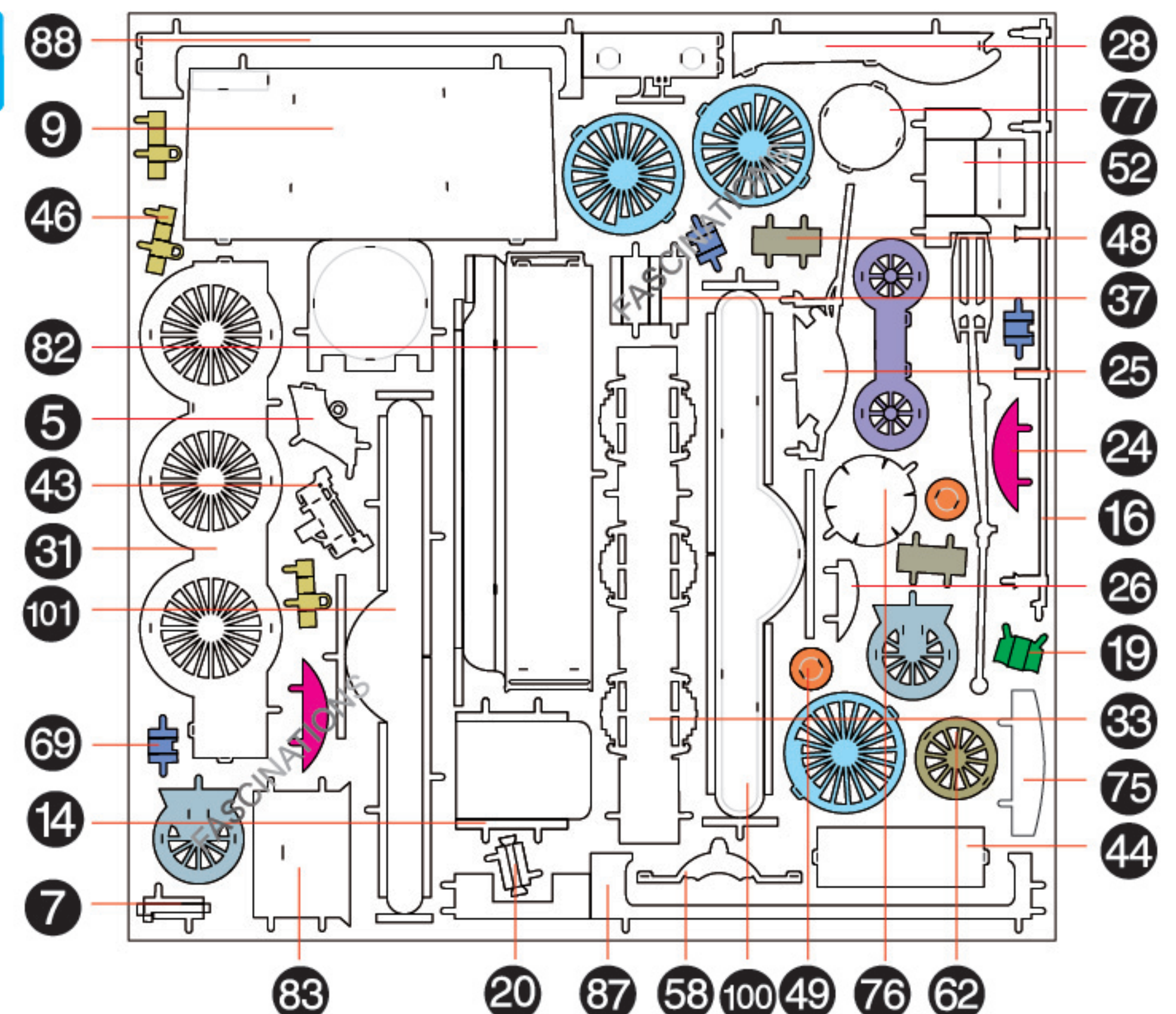
B



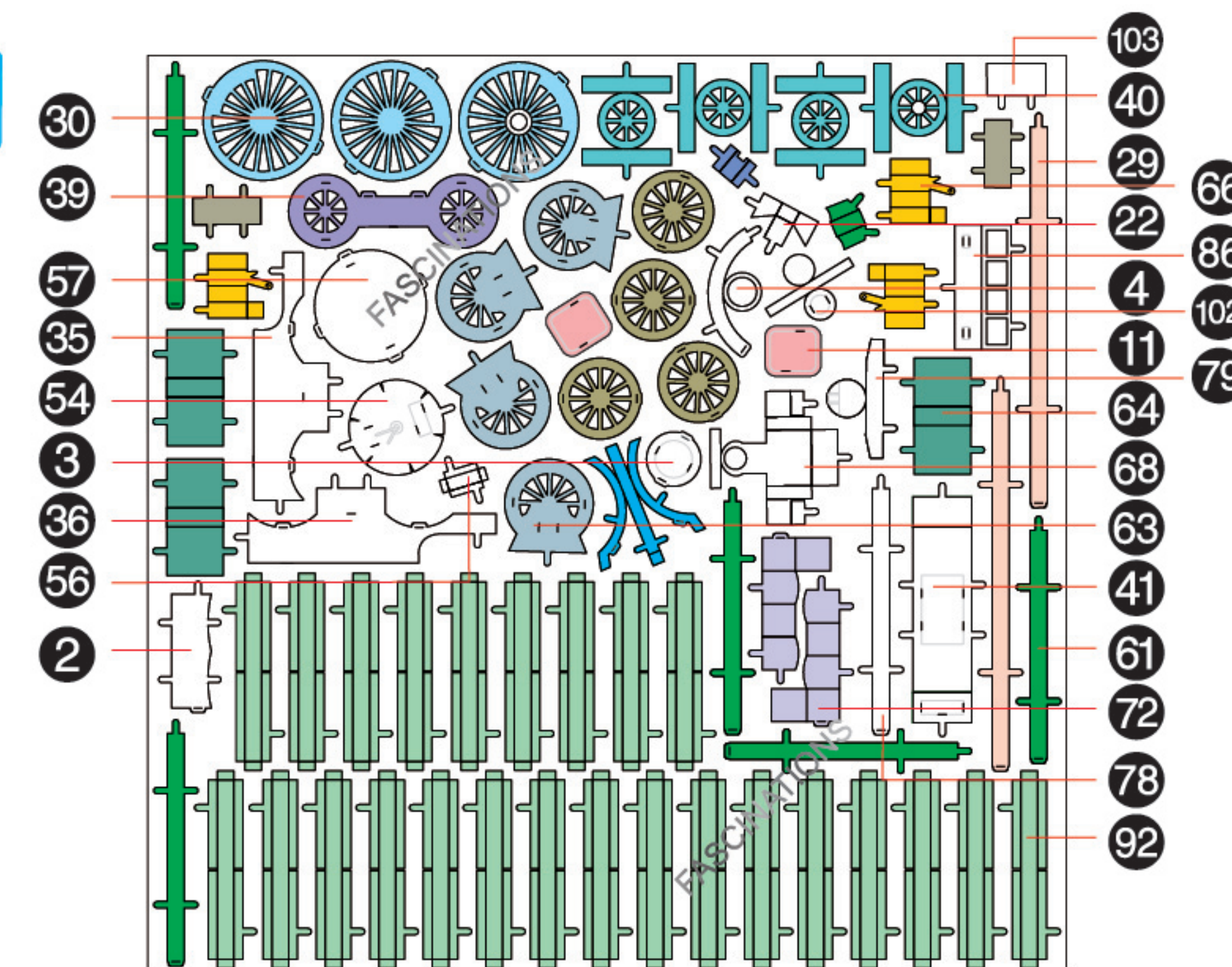
C



D



E



In order to avoid possible injury from sharp edges, please carefully discard the metal sheets after parts have been removed

