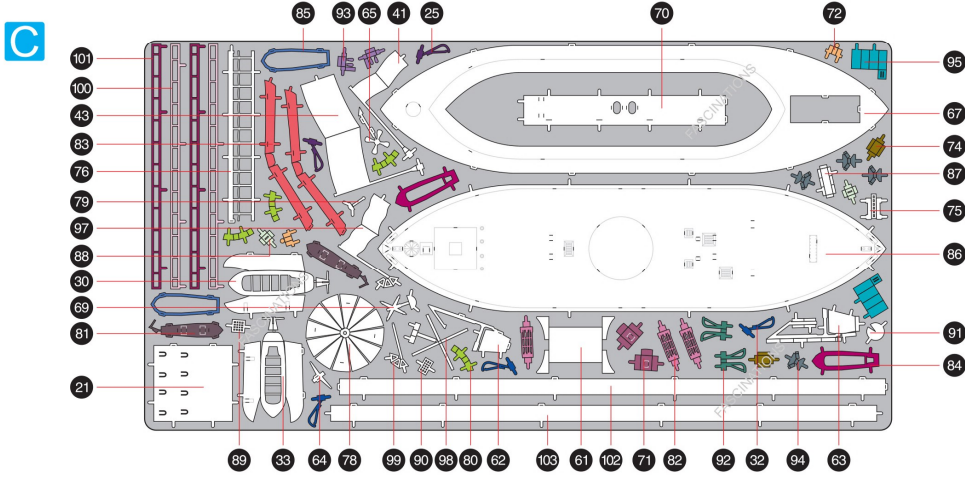
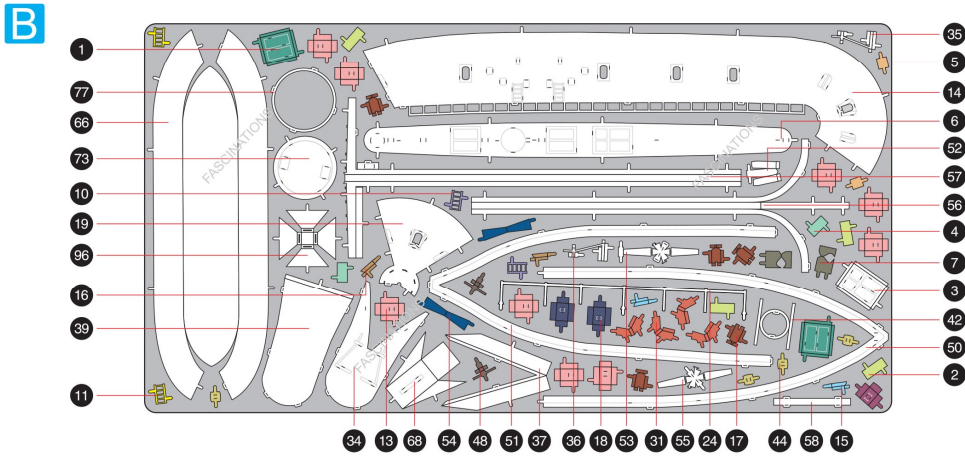
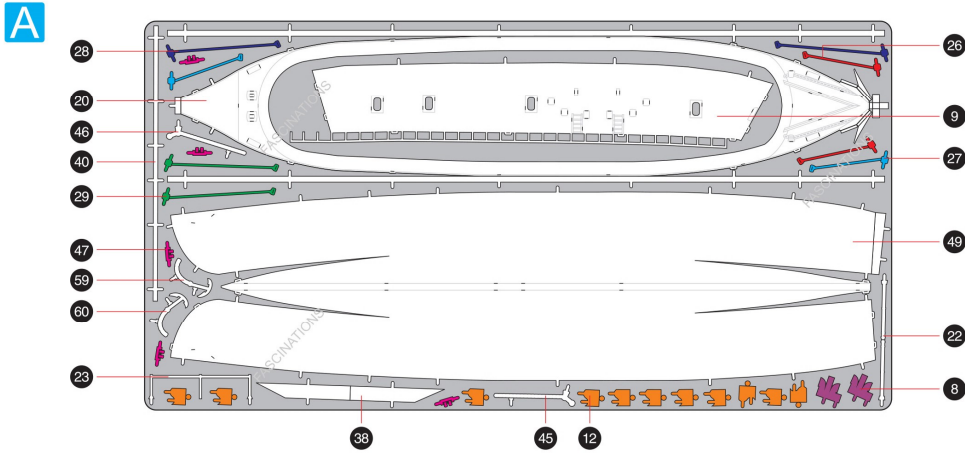


METAL SHEETS

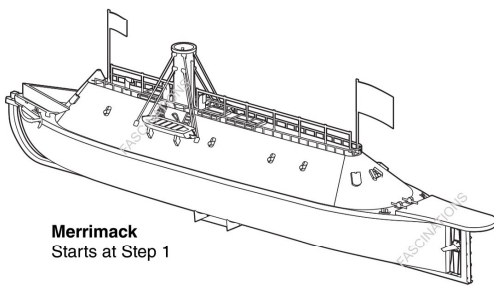
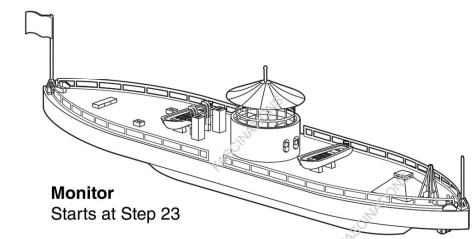
Parts with same color are duplicates



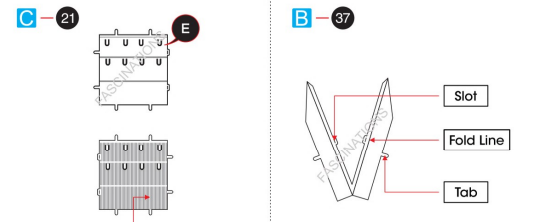
It is highly recommended that you visit www.metalearth.com/360/icx231 to see the completed model before assembling your own

Premium Series

ICX231 MONITOR AND MERRIMACK



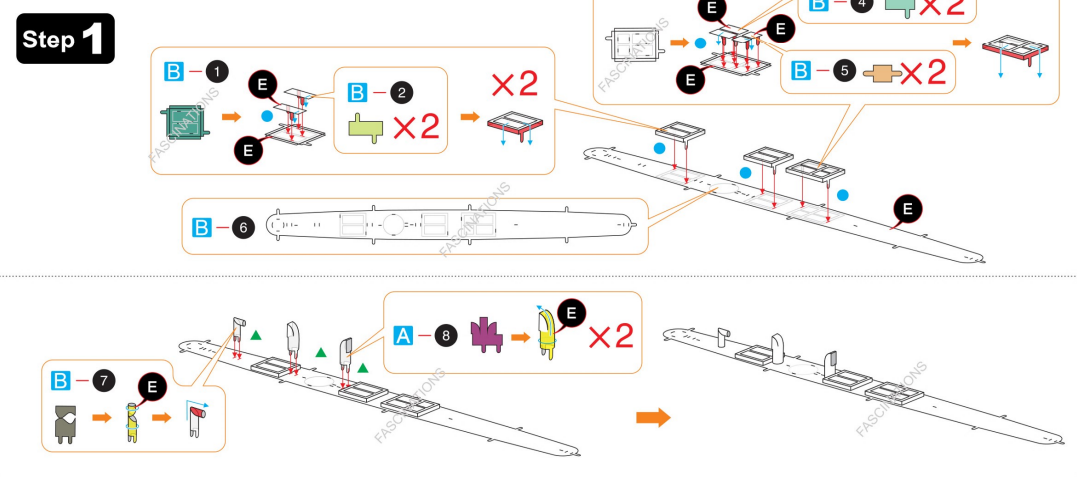
TO CREATE THE BEST CONNECTIONS



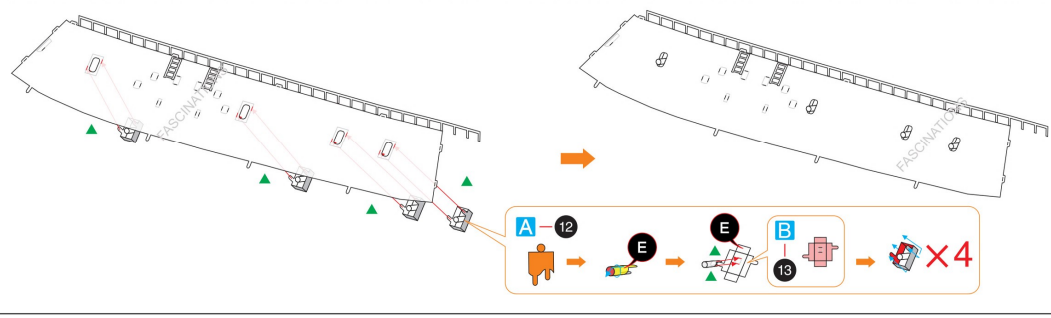
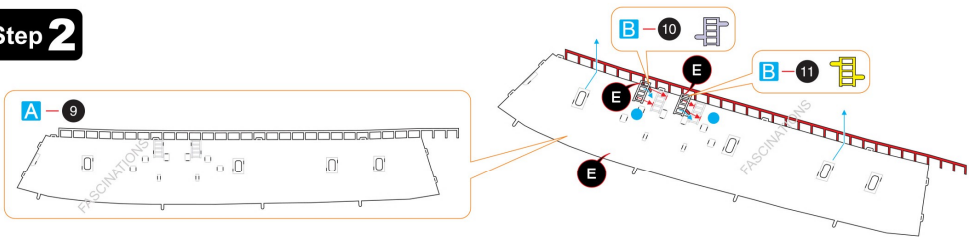
Consider these engraved stripes as supporting features for the bend

- Legends:**
- E** Engraved/ Color side
 - NE** Non - engraved/ Silver side
 - Hand icon** Attention point
 - Blue dot** Insert tab and bend 90 degrees
 - Green triangle** Insert tab and twist 90 degrees
- Recommended tools:**
- Wire cutters: helpful for taking parts from the metal sheets.
 - Tweezers or needle nose pliers: helpful for folding parts, bending and twisting tabs.
- Assembly tip:**
- If needed, slightly twist tabs to hold parts together then untwist and bend them down for a nice finish.
- Warning:** In order to avoid possible injury from sharp edges, please carefully discard the metal sheets after parts have been removed.

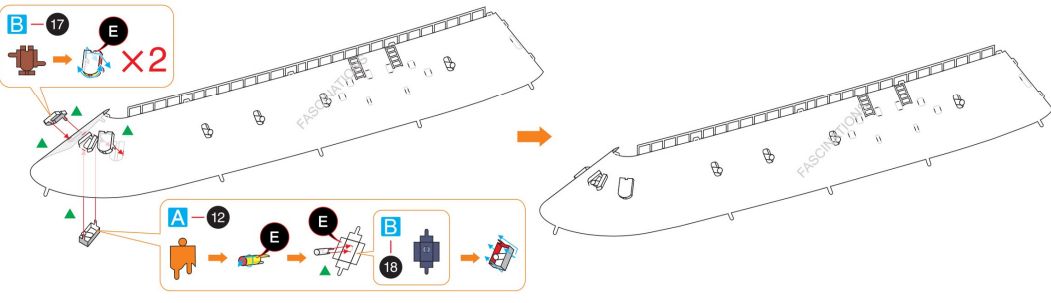
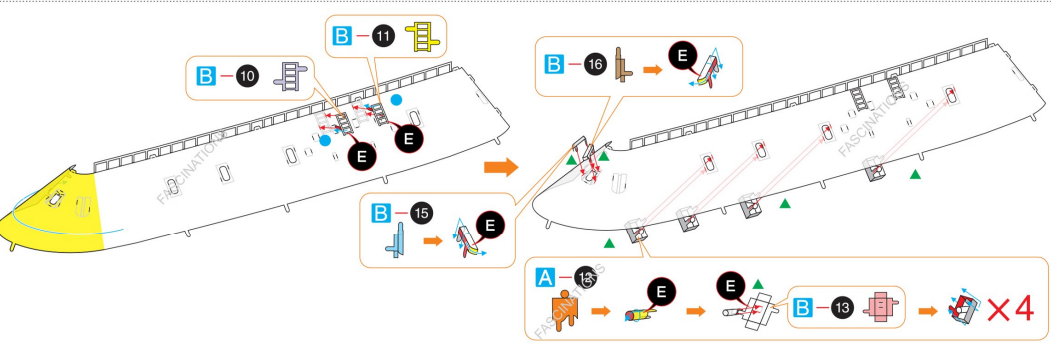
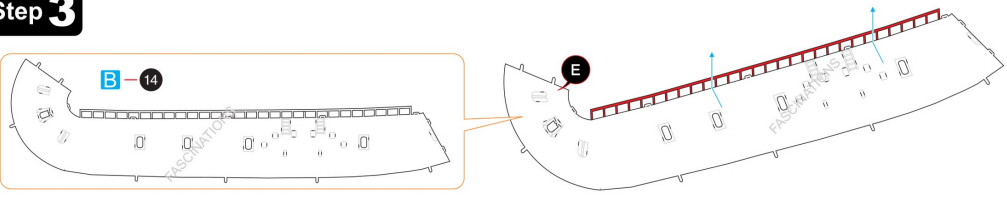
ASSEMBLY STEPS



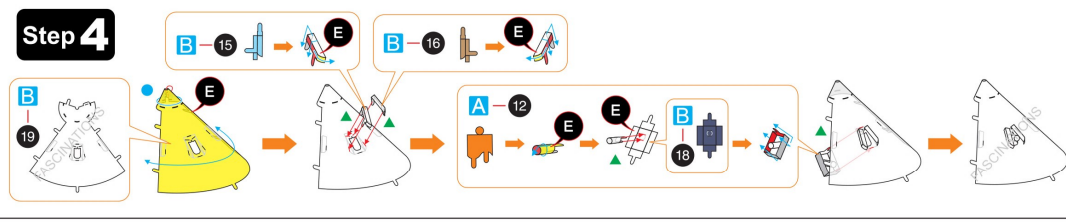
Step 2



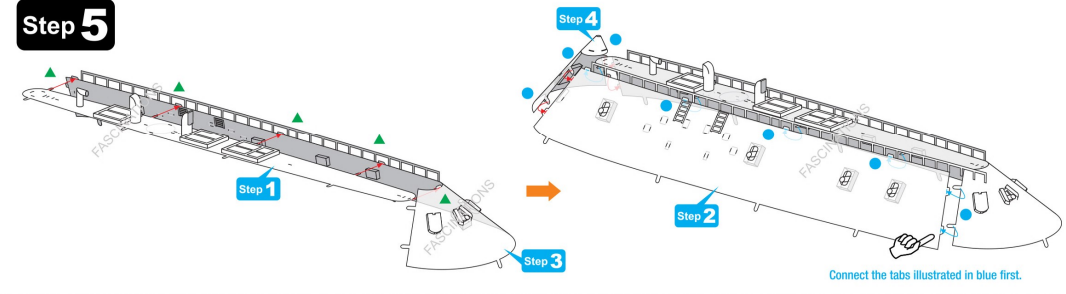
Step 3



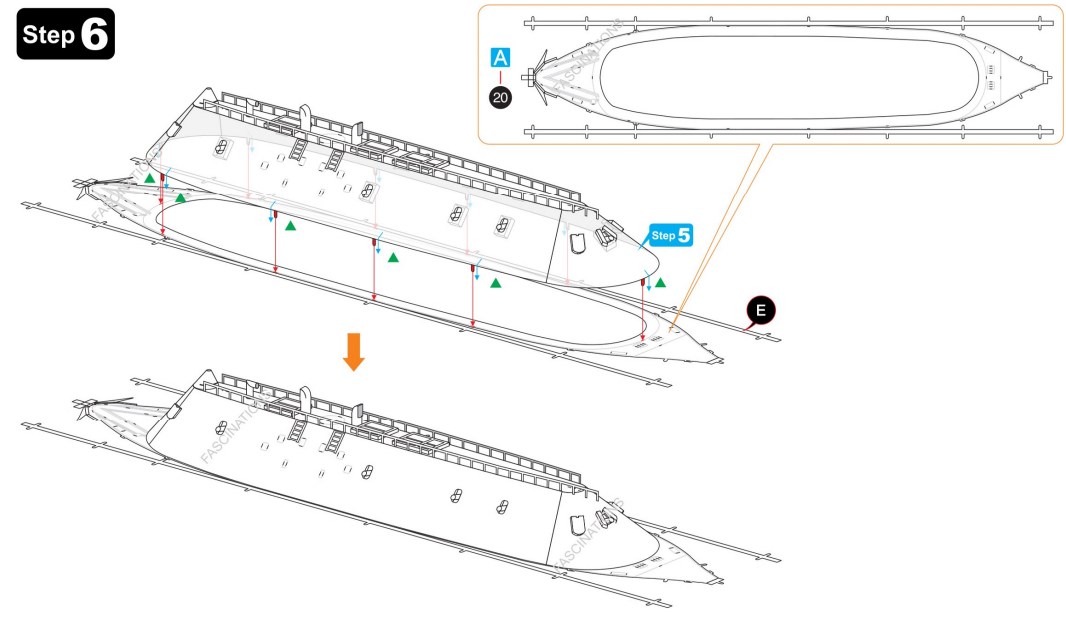
Step 4



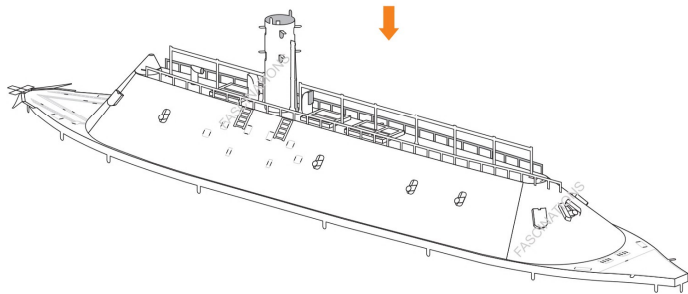
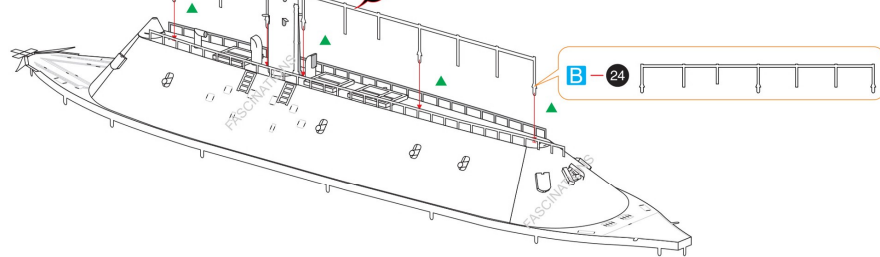
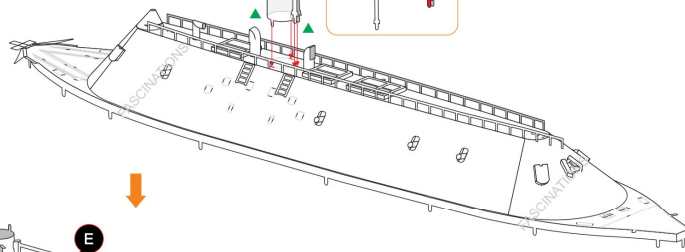
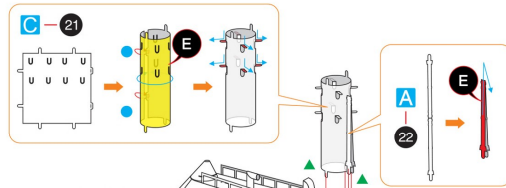
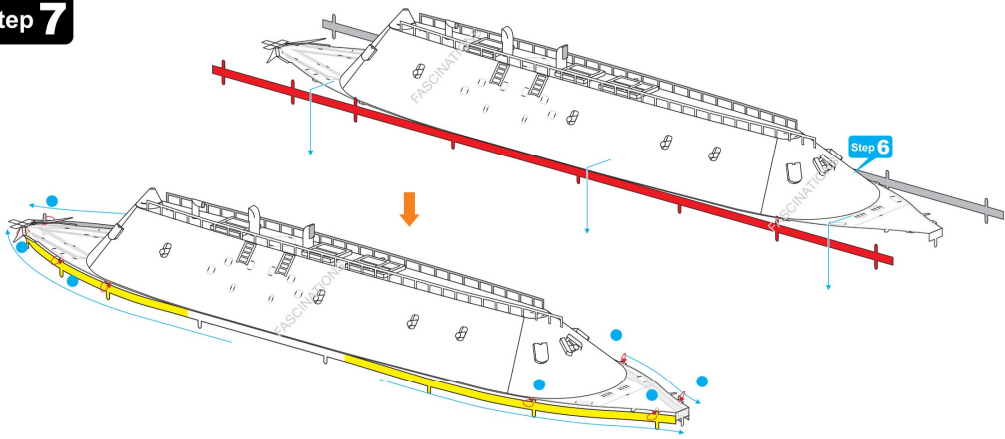
Step 5



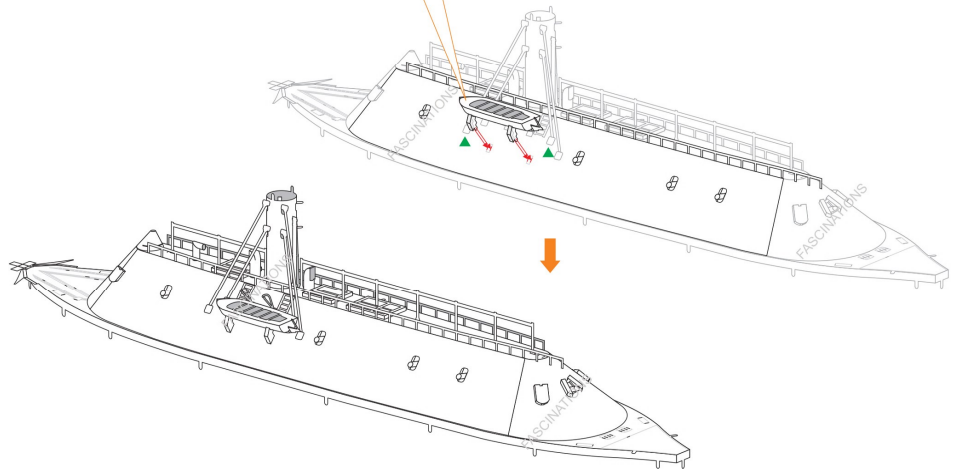
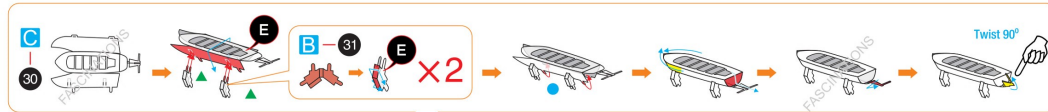
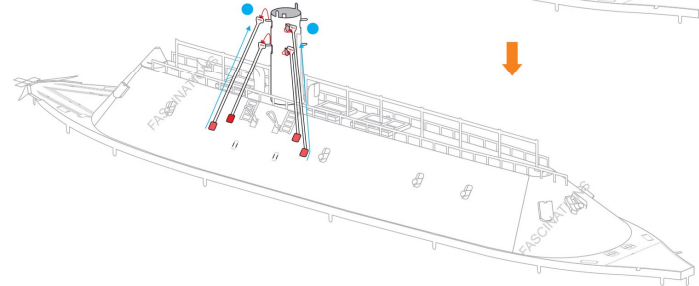
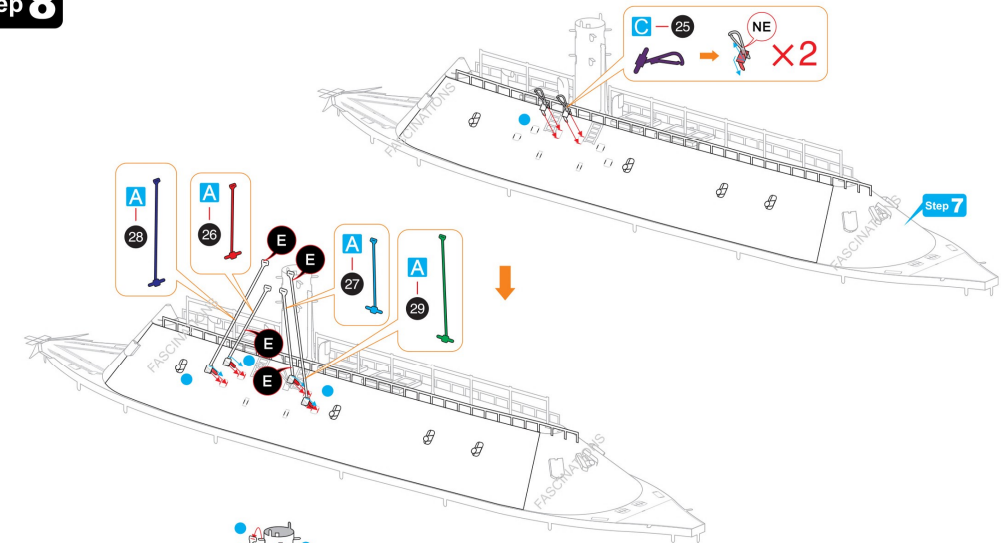
Step 6



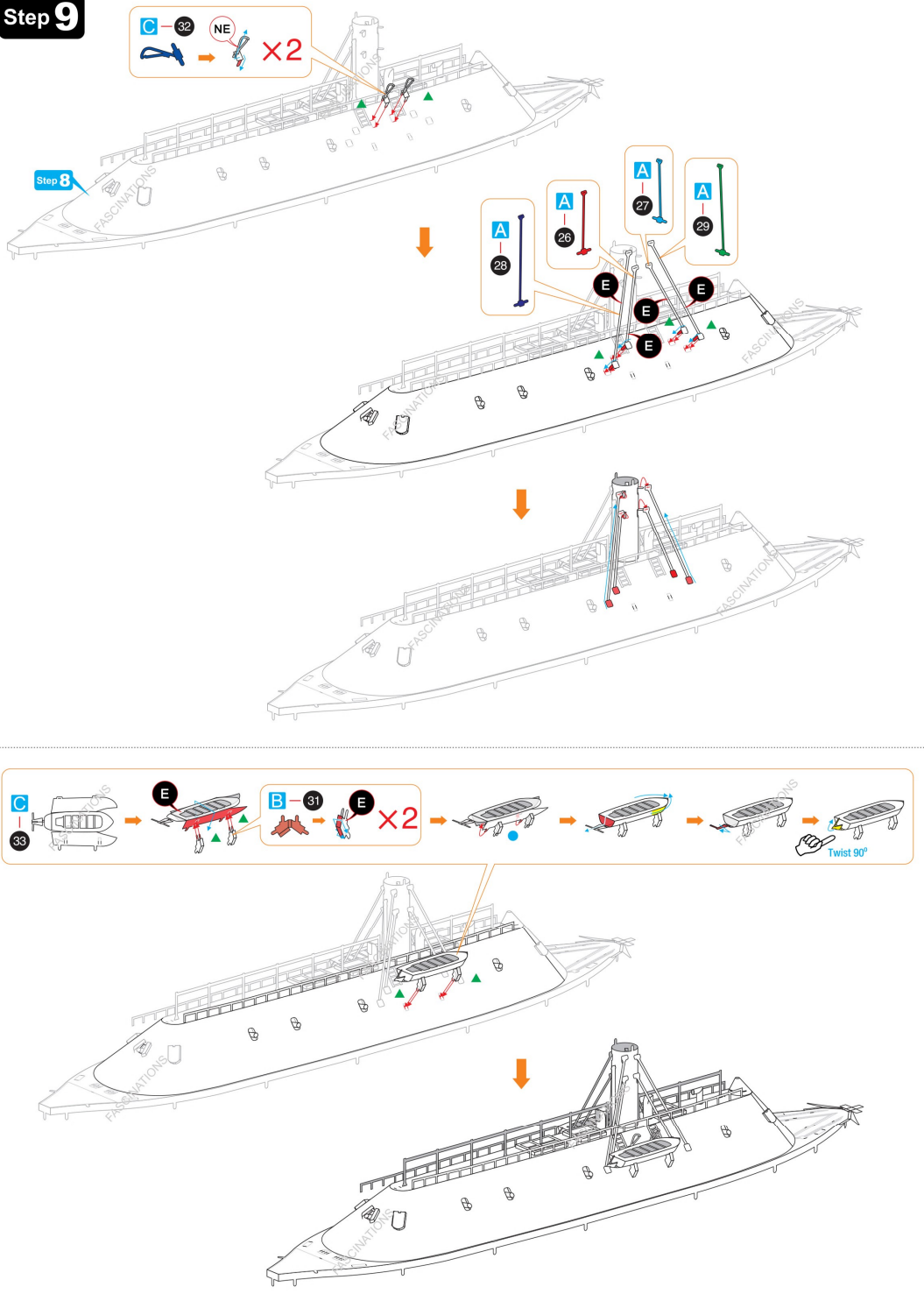
Step 7



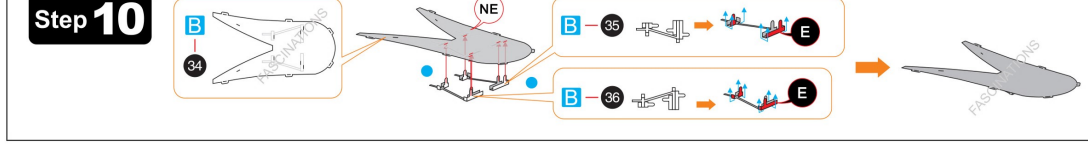
Step 8



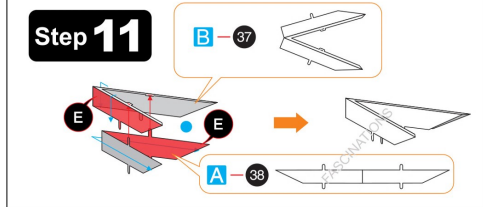
Step 9



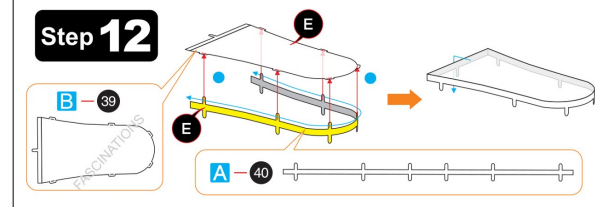
Step 10



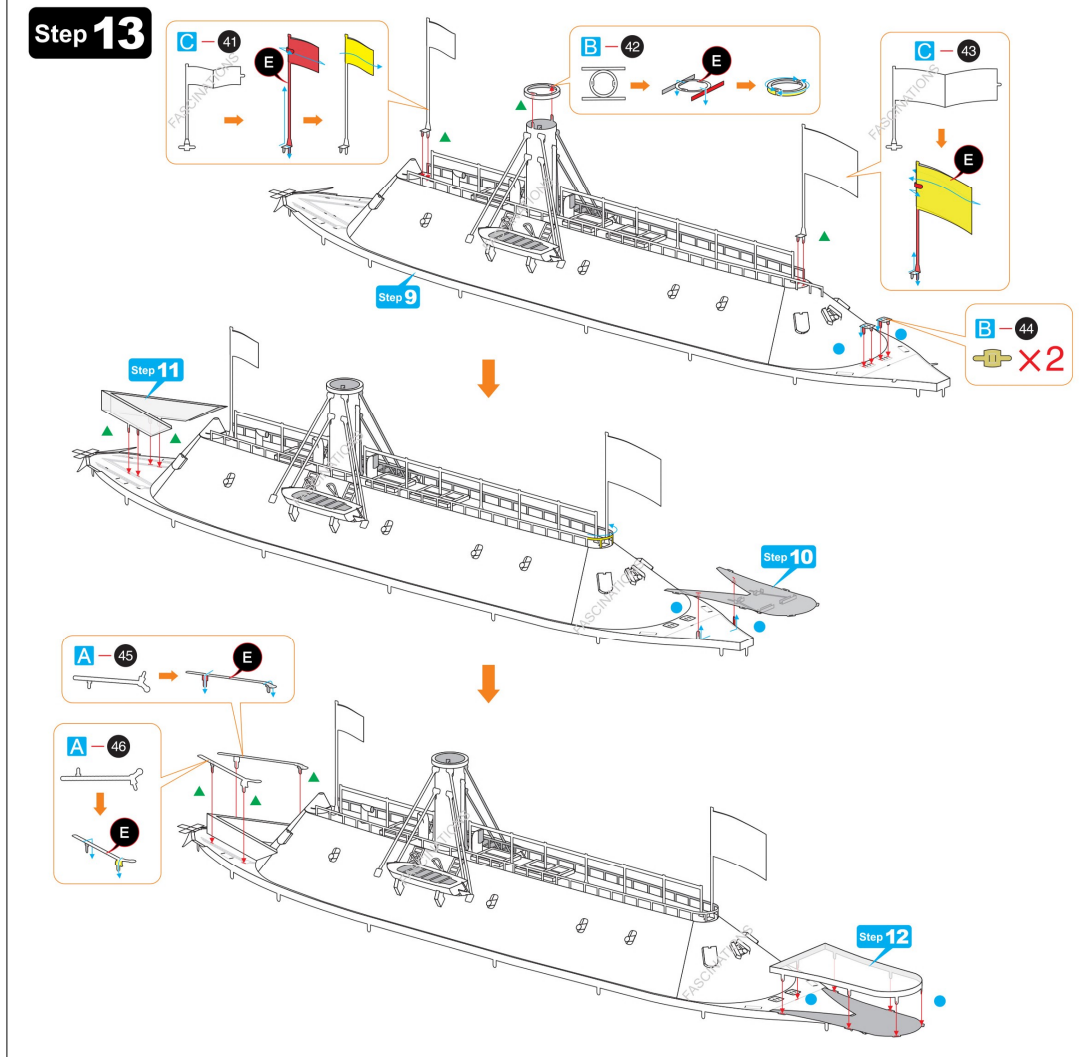
Step 11



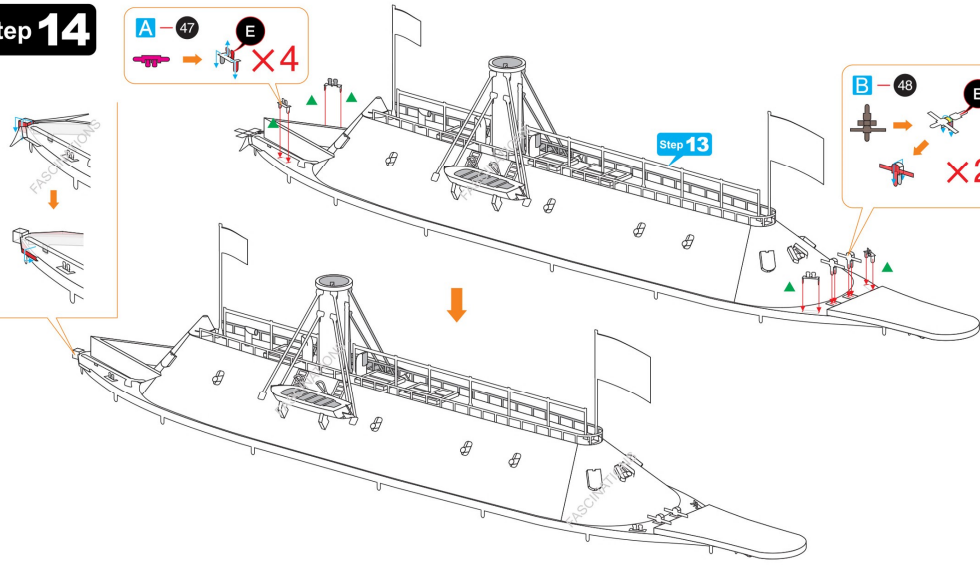
Step 12



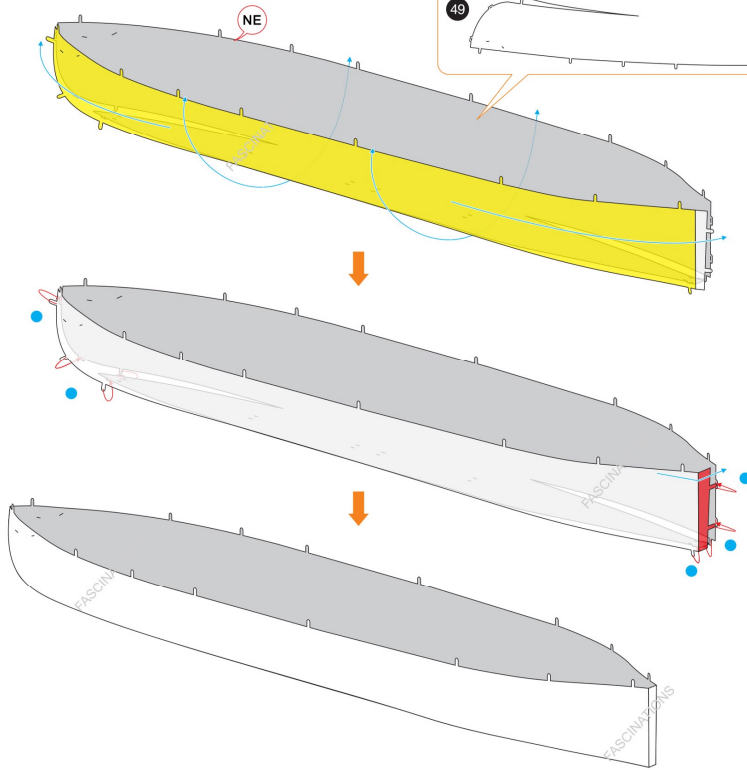
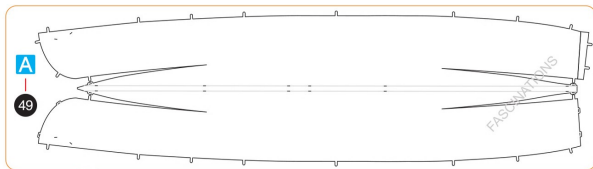
Step 13



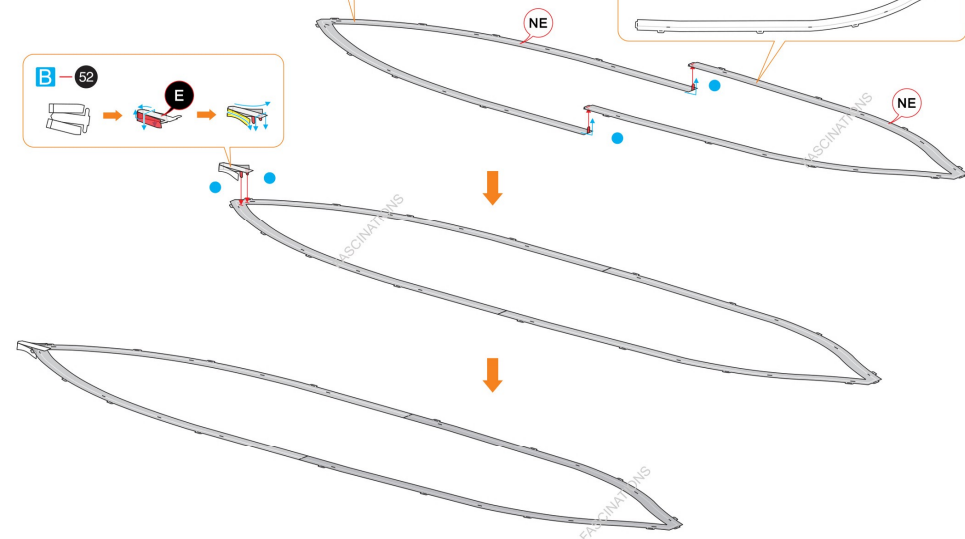
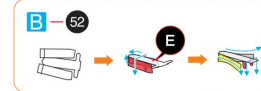
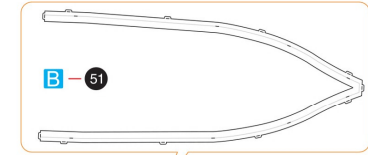
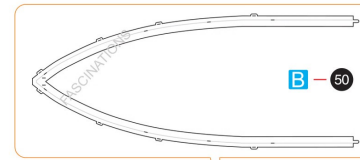
Step 14



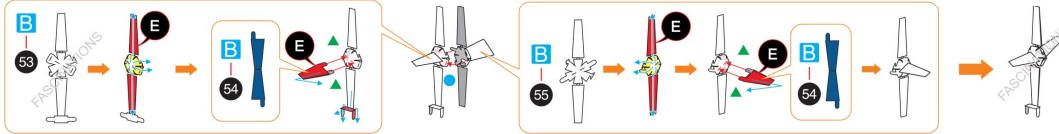
Step 15



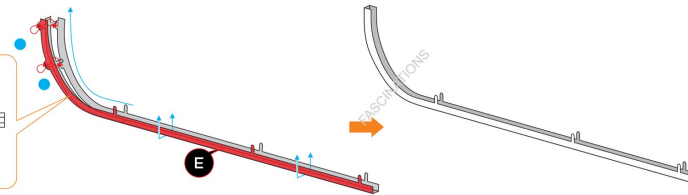
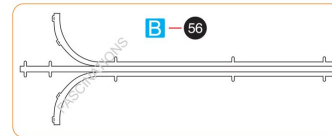
Step 16



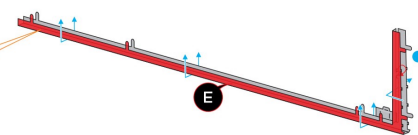
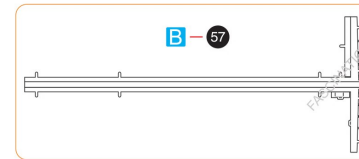
Step 17



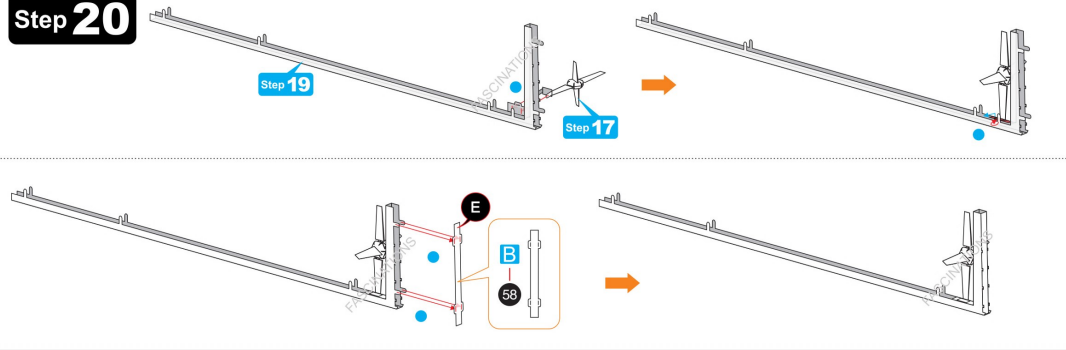
Step 18



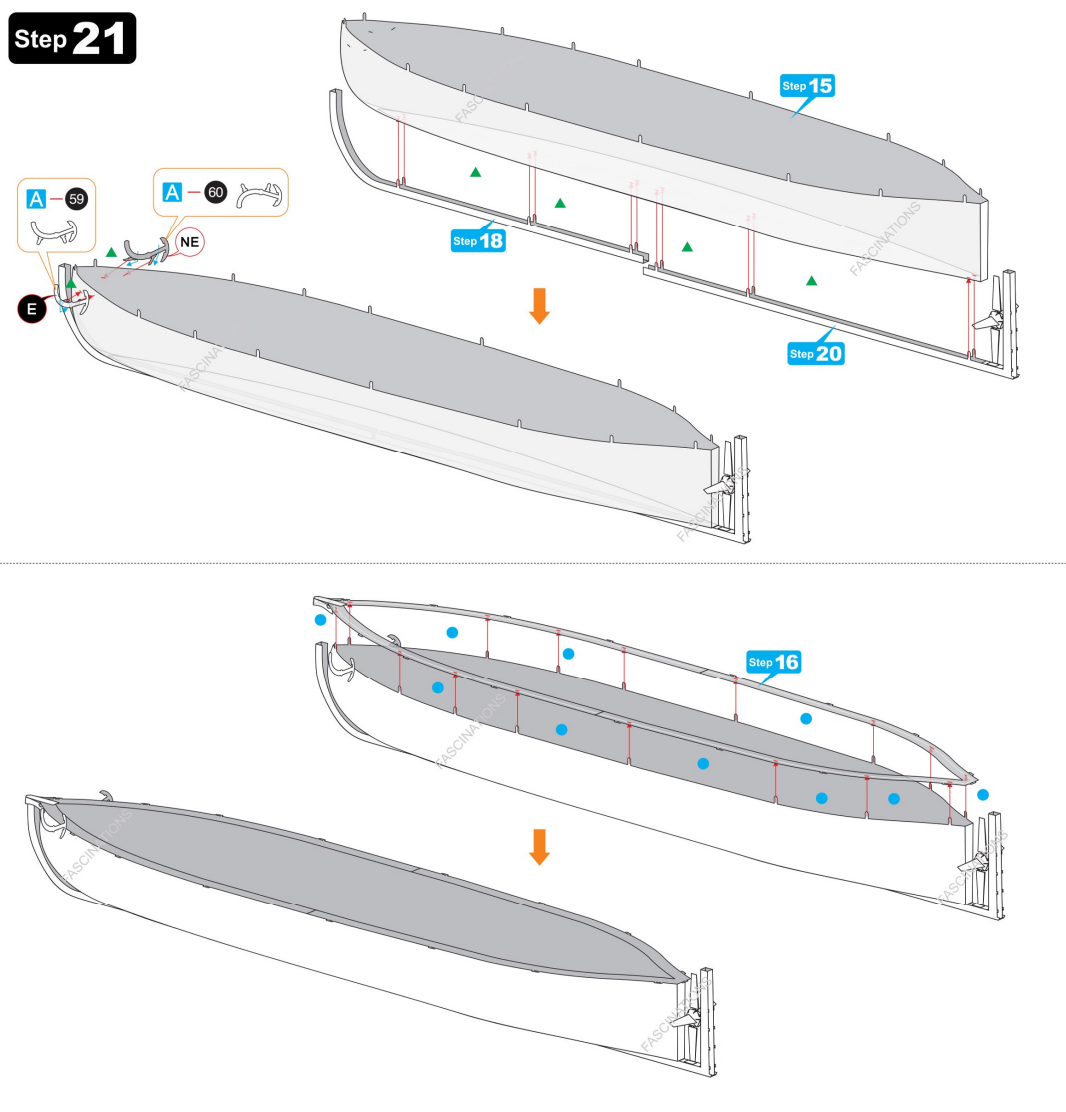
Step 19



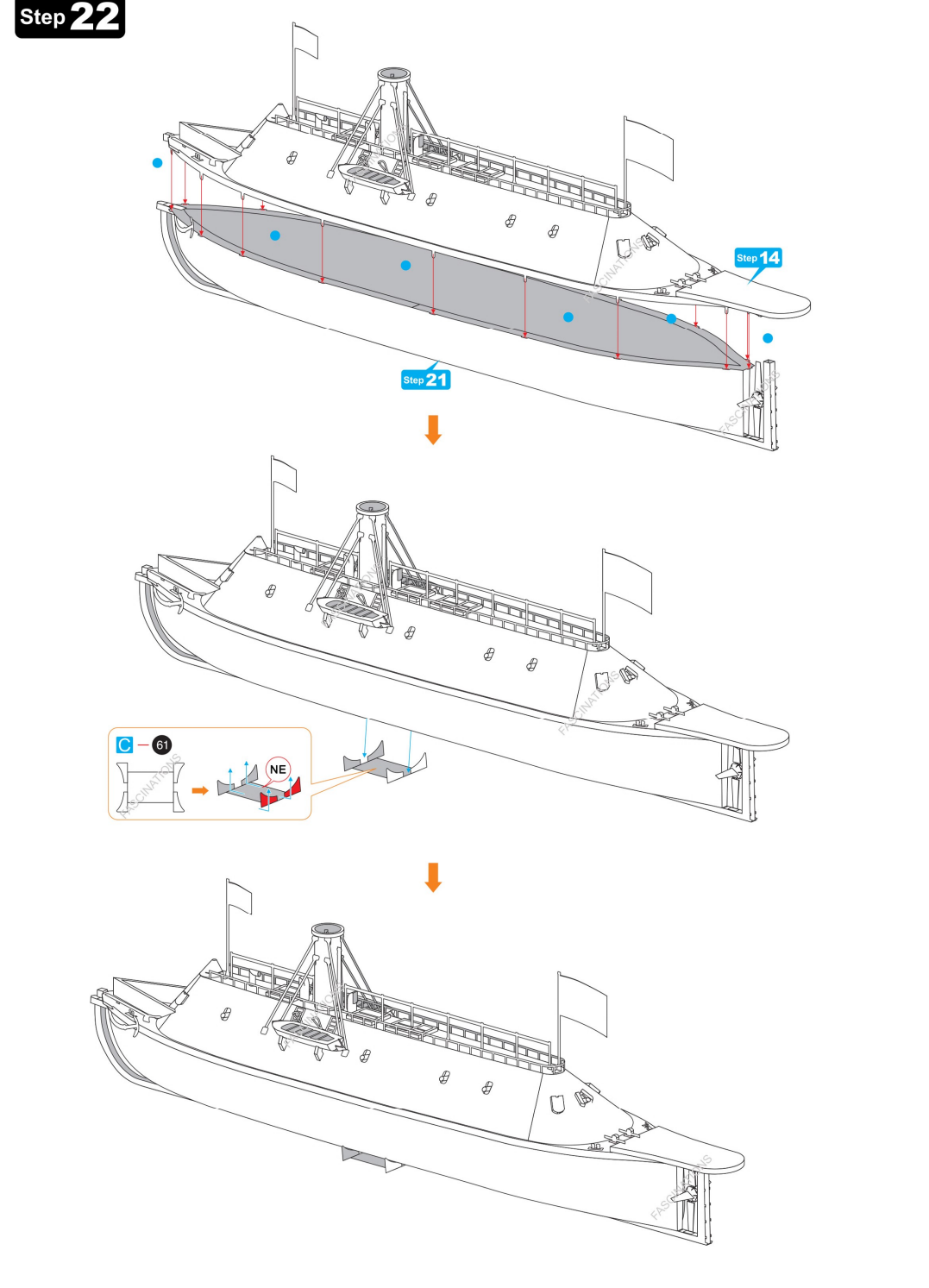
Step 20



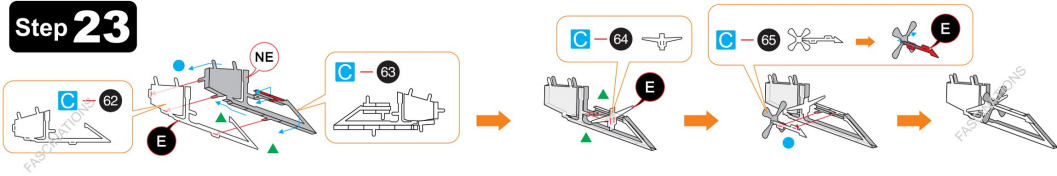
Step 21



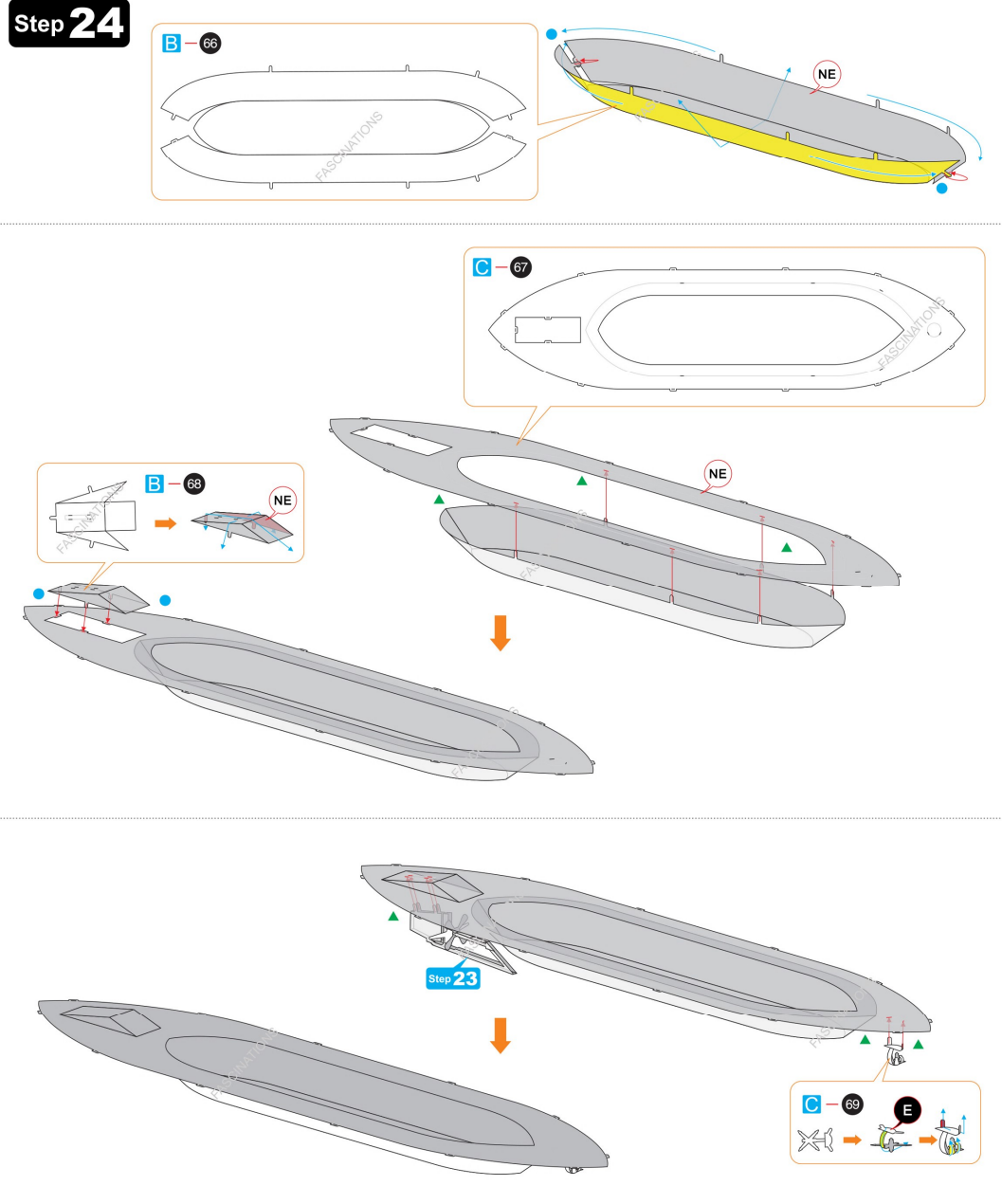
Step 22



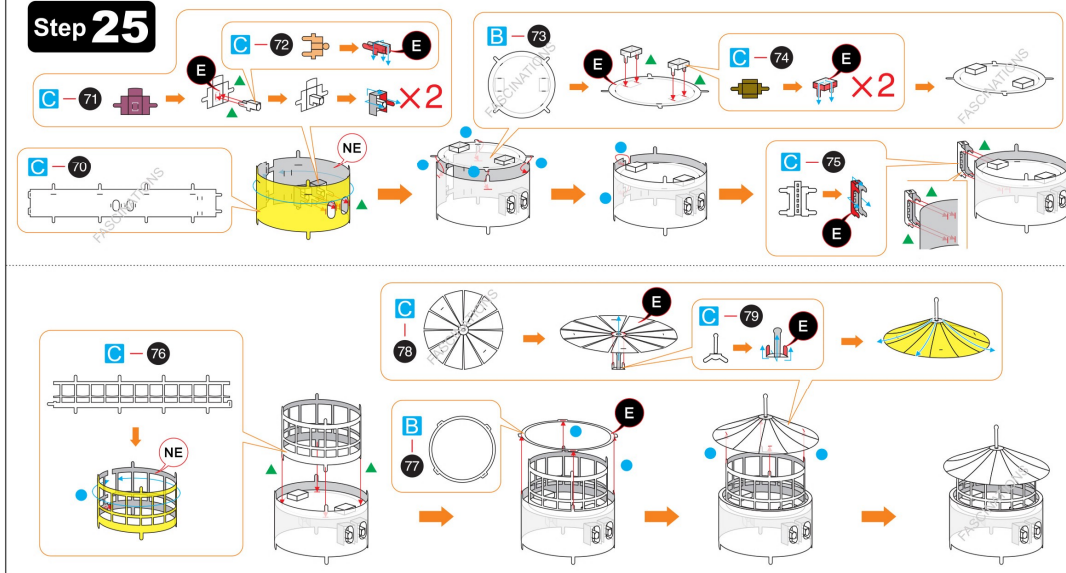
Step 23



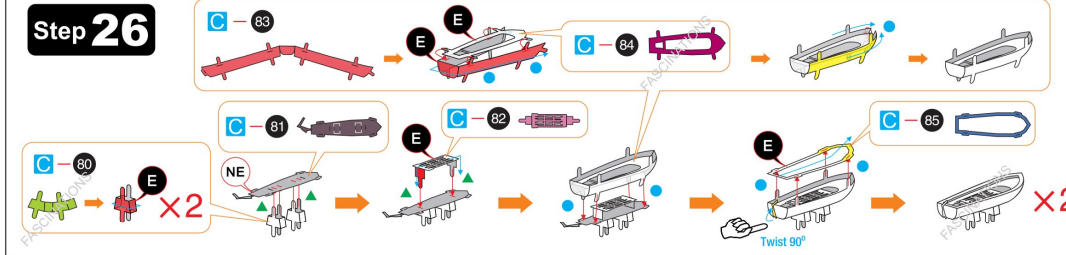
Step 24



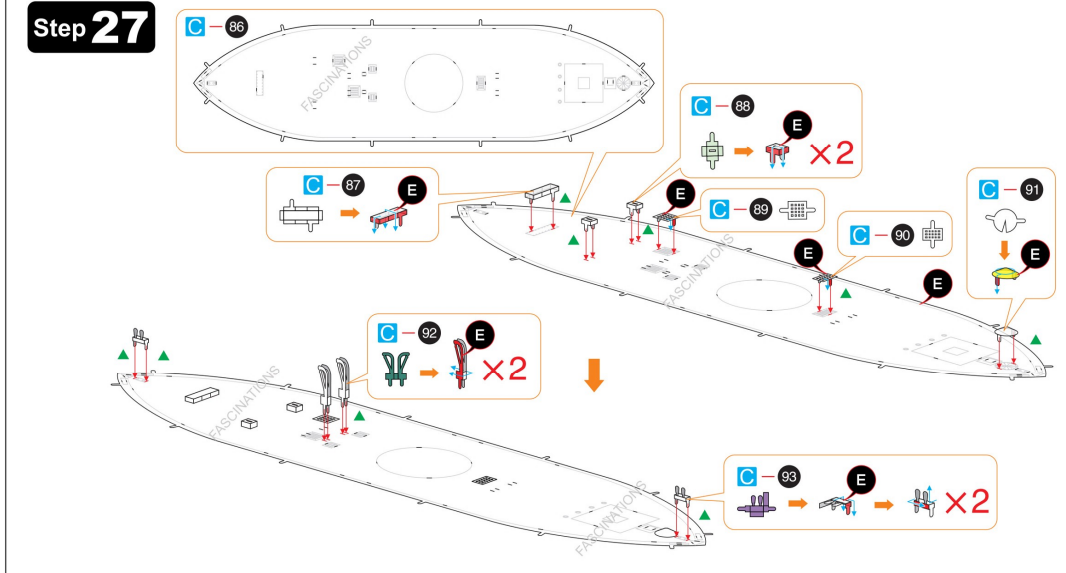
Step 25



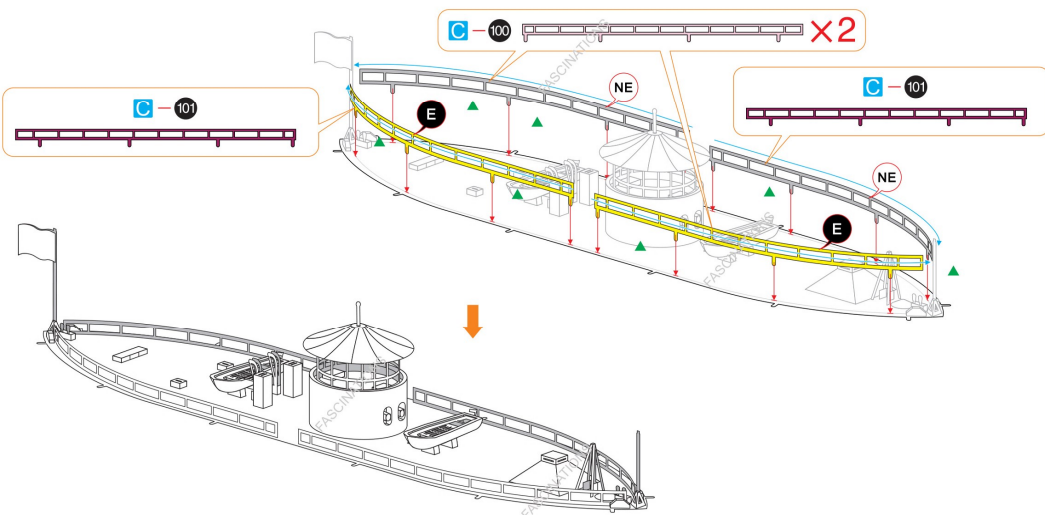
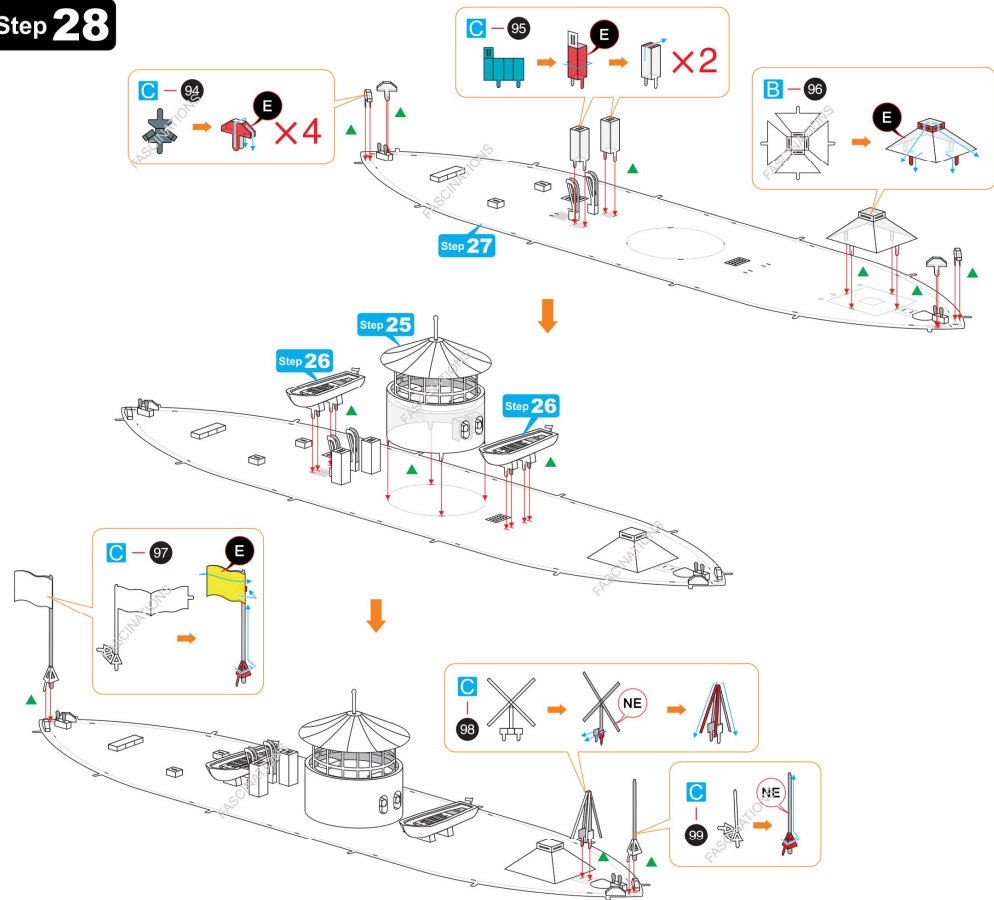
Step 26



Step 27



Step 28



Step 29

