

SOUNDWAVE
MMS473

Licensed by:



TRANSFORMERS and all related characters are trademarks of Hasbro and are used with permission. © 2022 Hasbro. All Rights Reserved. Licensed by Hasbro.

360°
view

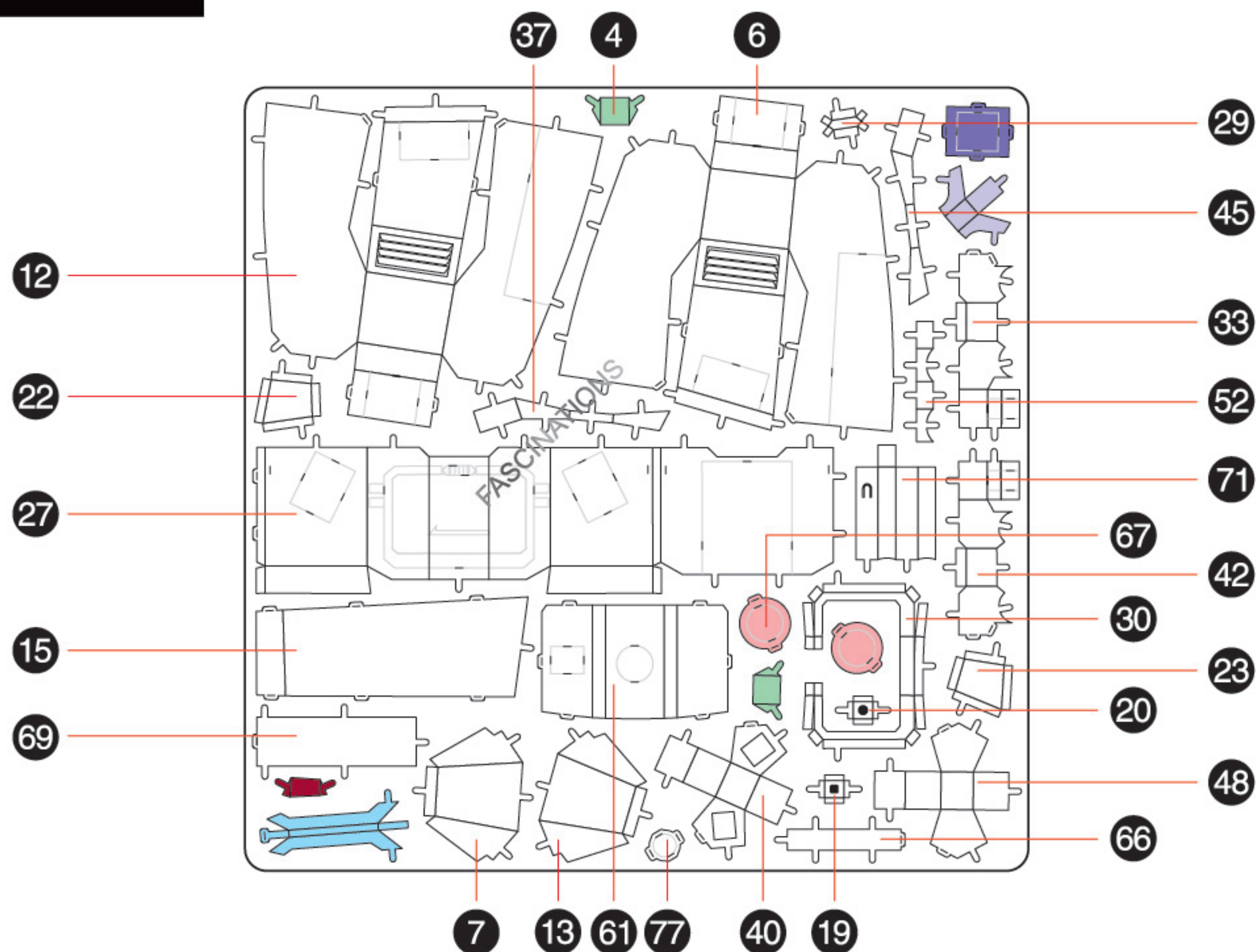


It is highly recommended that you visit
www.metalearth.com/360/mms473
to see the completed model before assembling your own

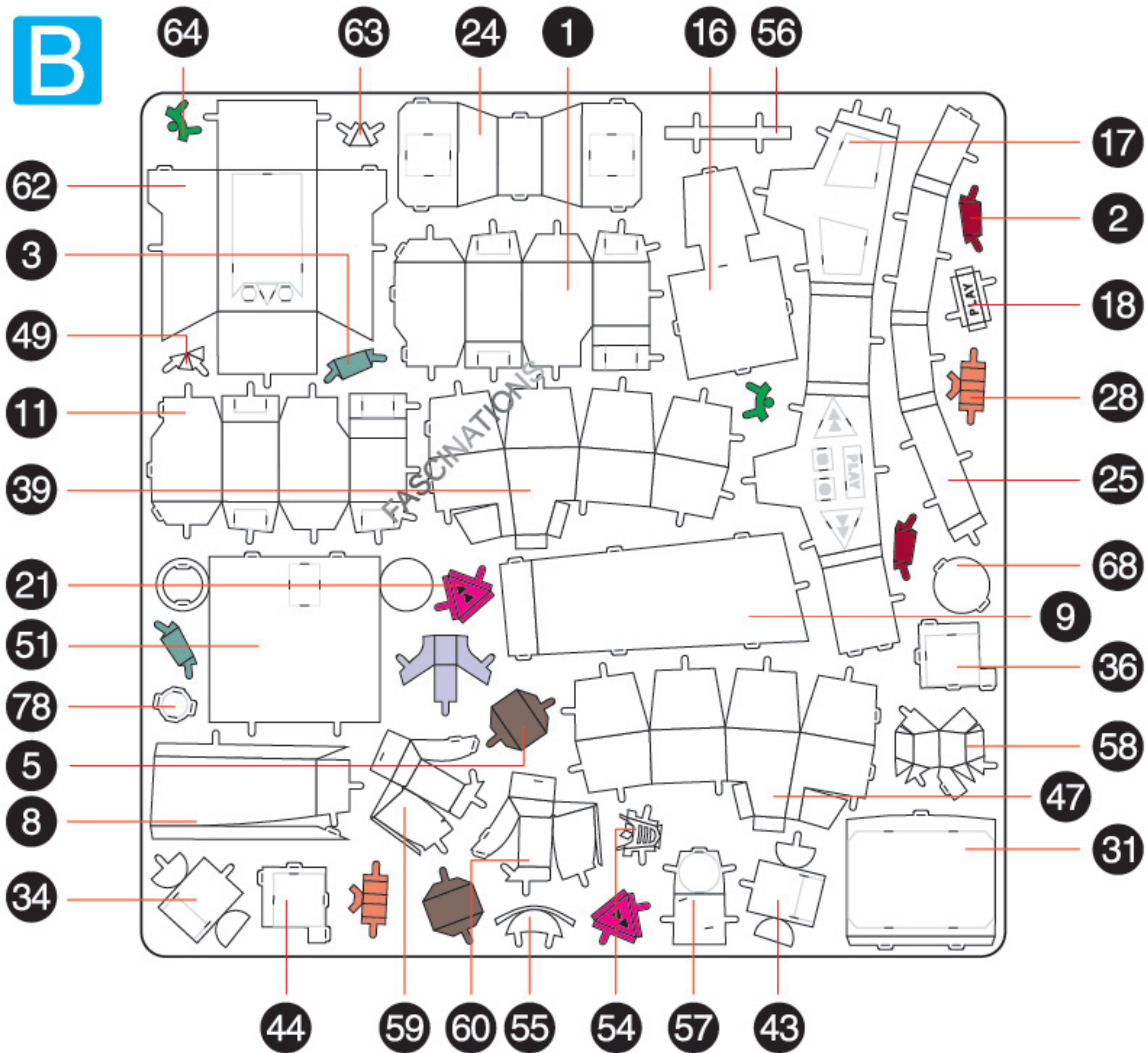
METAL SHEETS

Parts with same color are duplicates

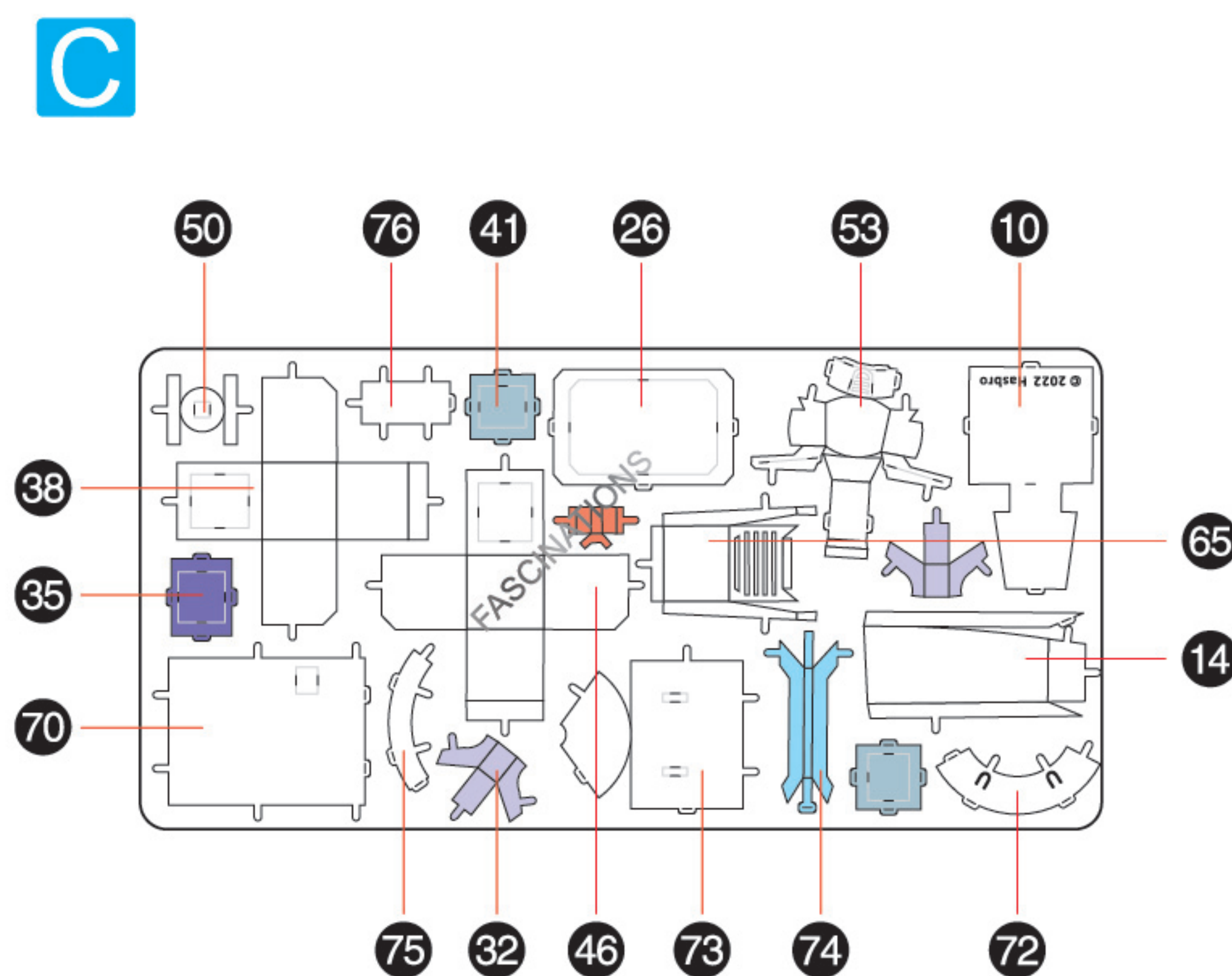
A



B



C



Go to www.metalearth.com/360/mms473 to see the zoomable PDF version of this instruction sheet

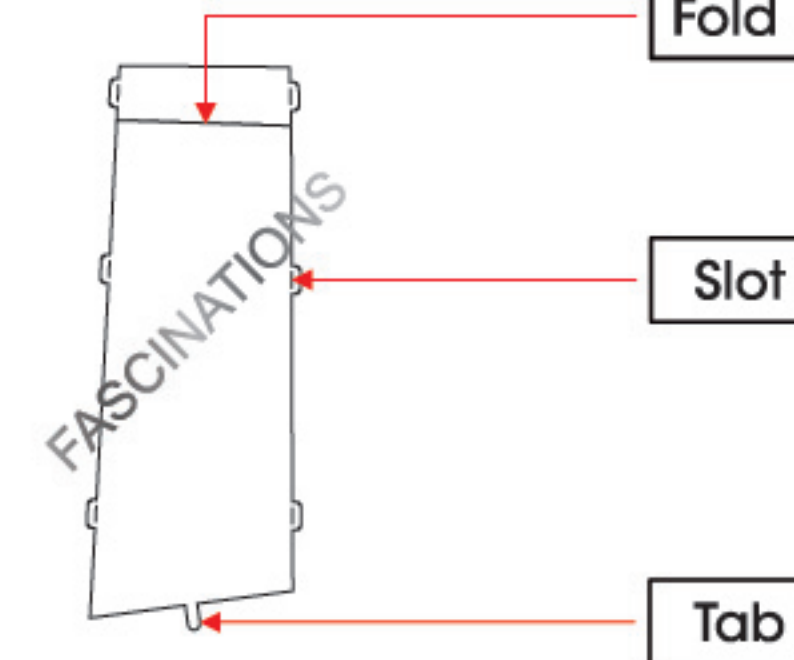
TO CREATE THE BEST CONNECTIONS

C - 75



Consider these engraved stripes as supporting features for the bend

B - 9



Legends:

- E** Engraved / Color side
- NE** Non-engraved / Silver side
- Attention point
- Insert tab and bend 90 degrees
- Insert tab and twist 90 degrees

Recommended tools:

- Wire cutters: helpful for taking parts from the metal sheets.
- Tweezers or needle nose pliers: helpful for folding parts, bending and twisting tabs.

Assembly tip:

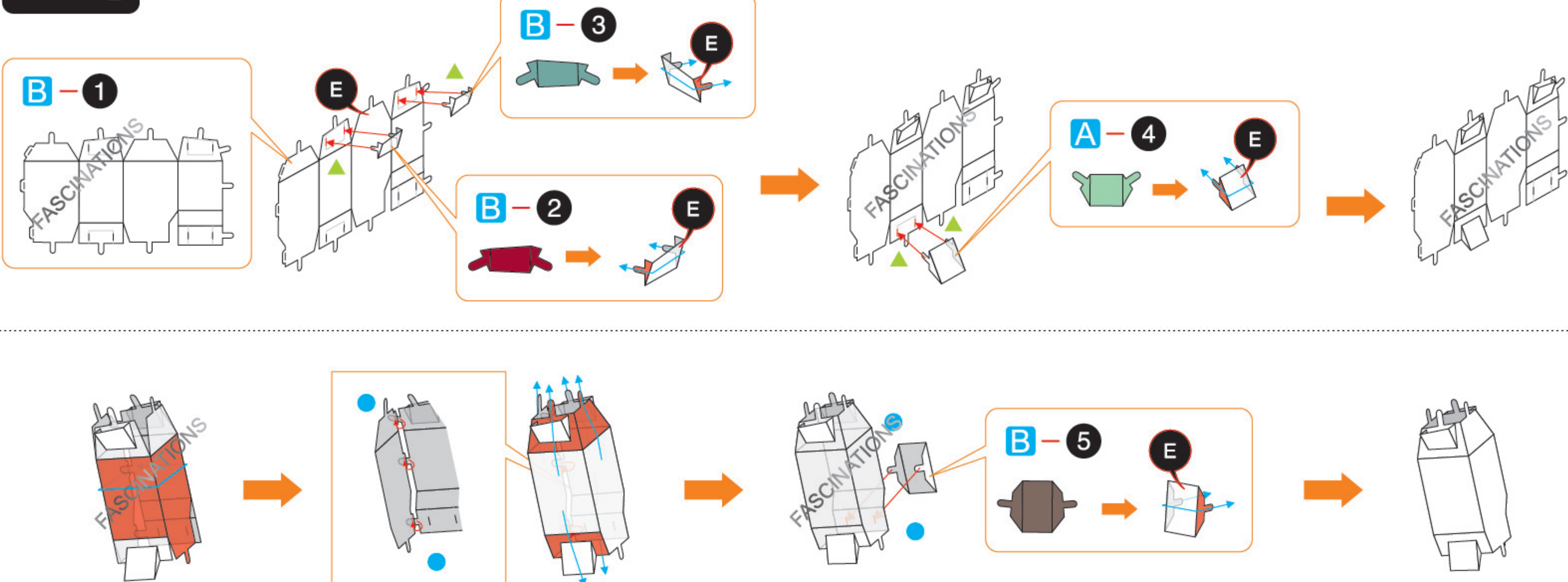
If needed, slightly twist tabs to hold parts together then untwist and bend them down for a nice finish.



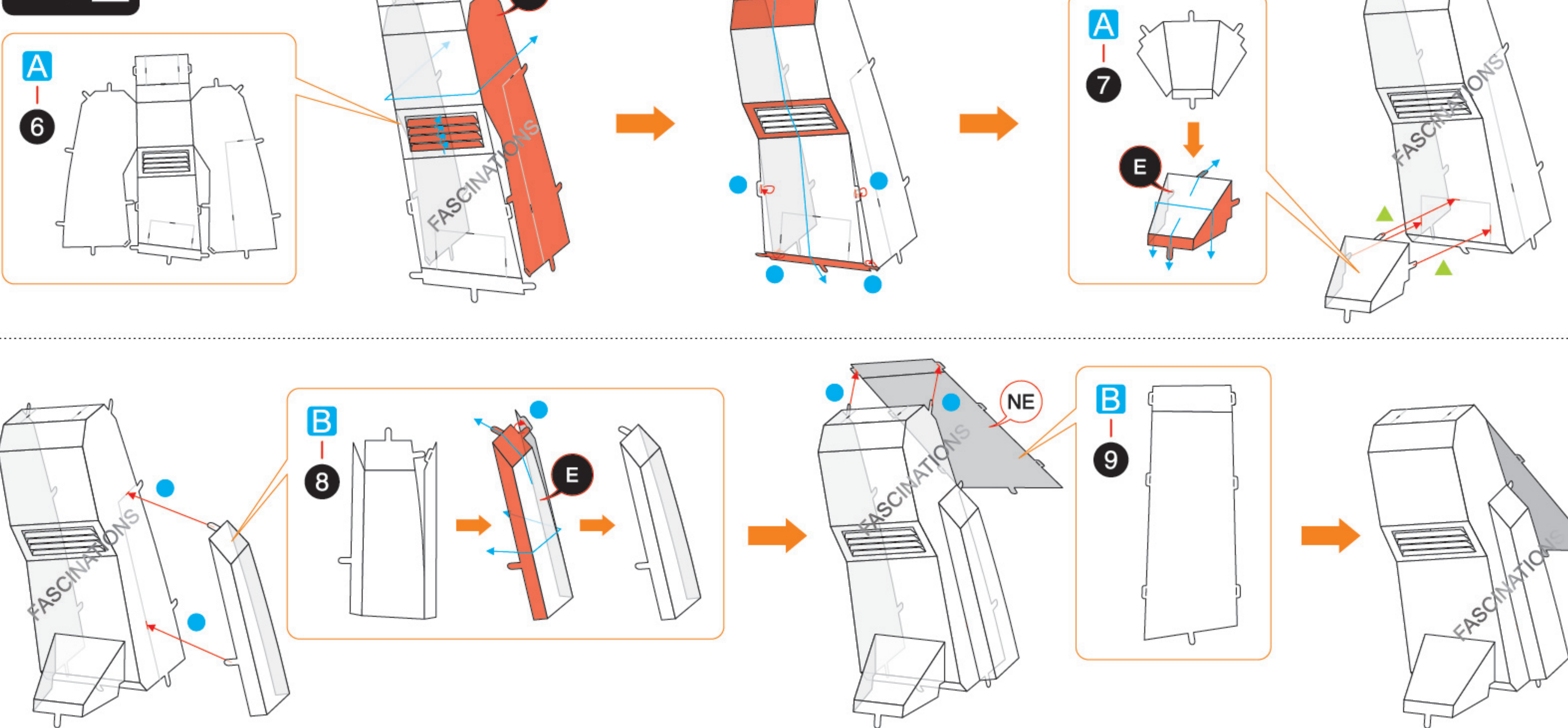
In order to avoid possible injury from sharp edges, please carefully discard the metal sheets after parts have been removed.

ASSEMBLY FLOW CHART

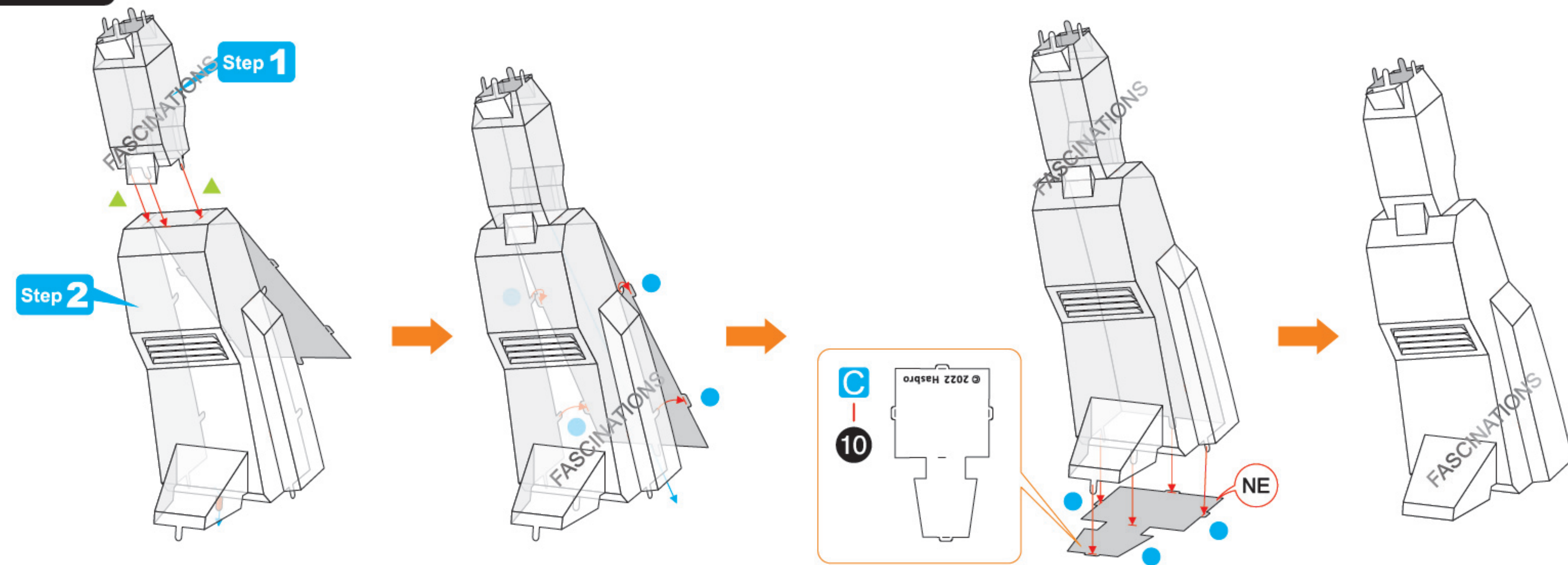
Step 1



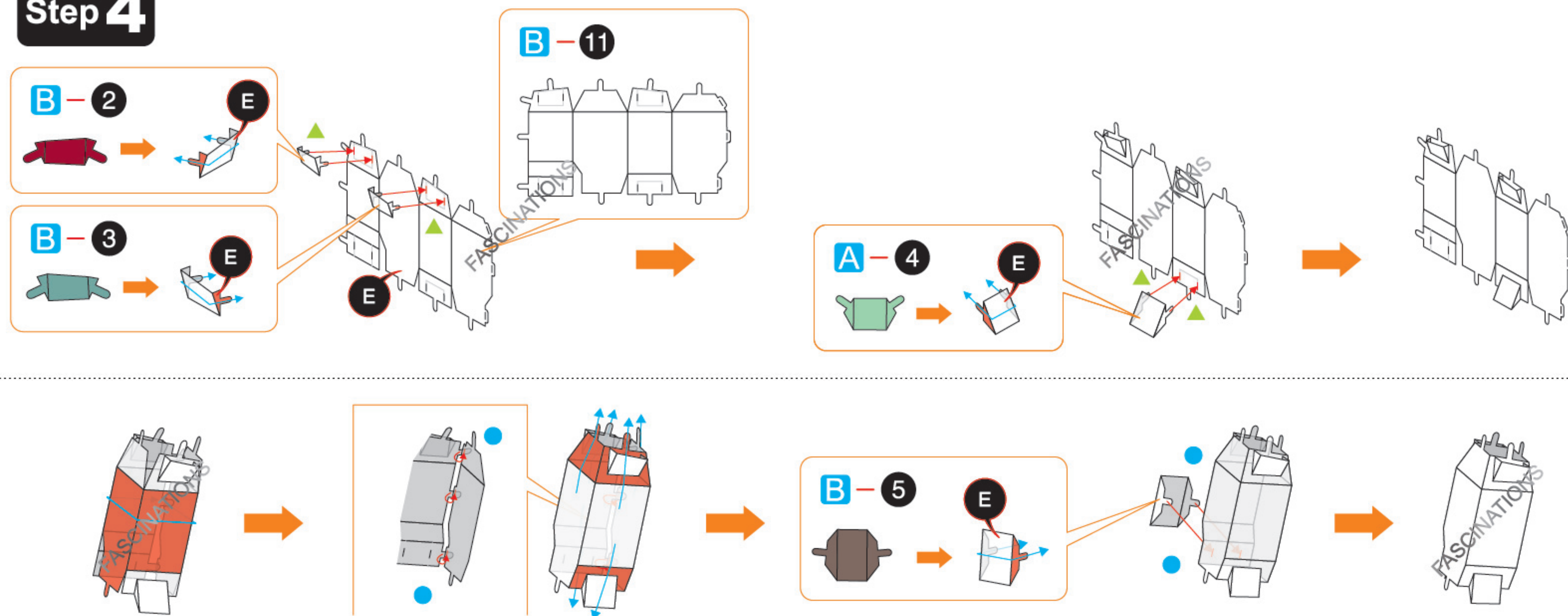
Step 2



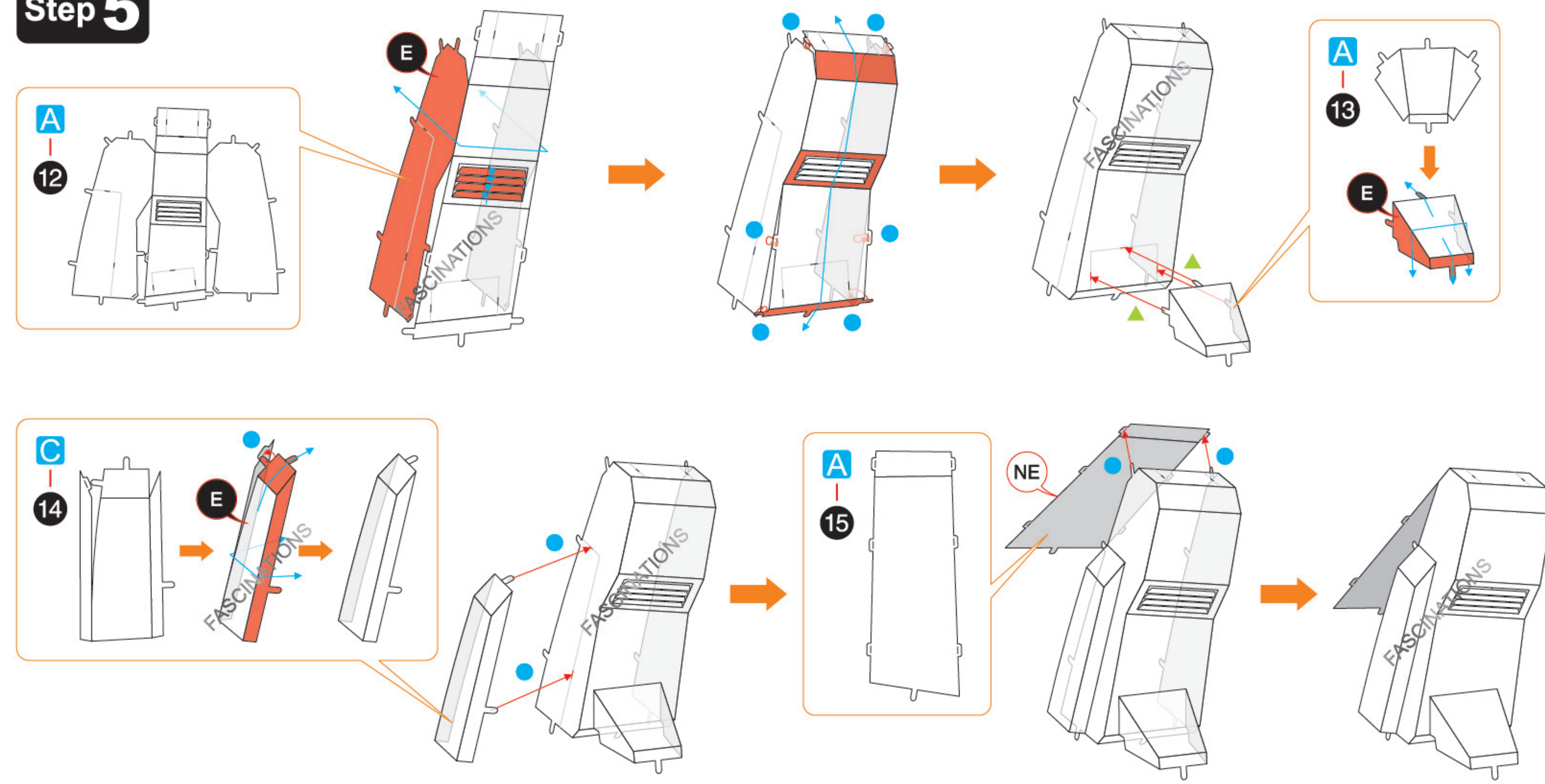
Step 3



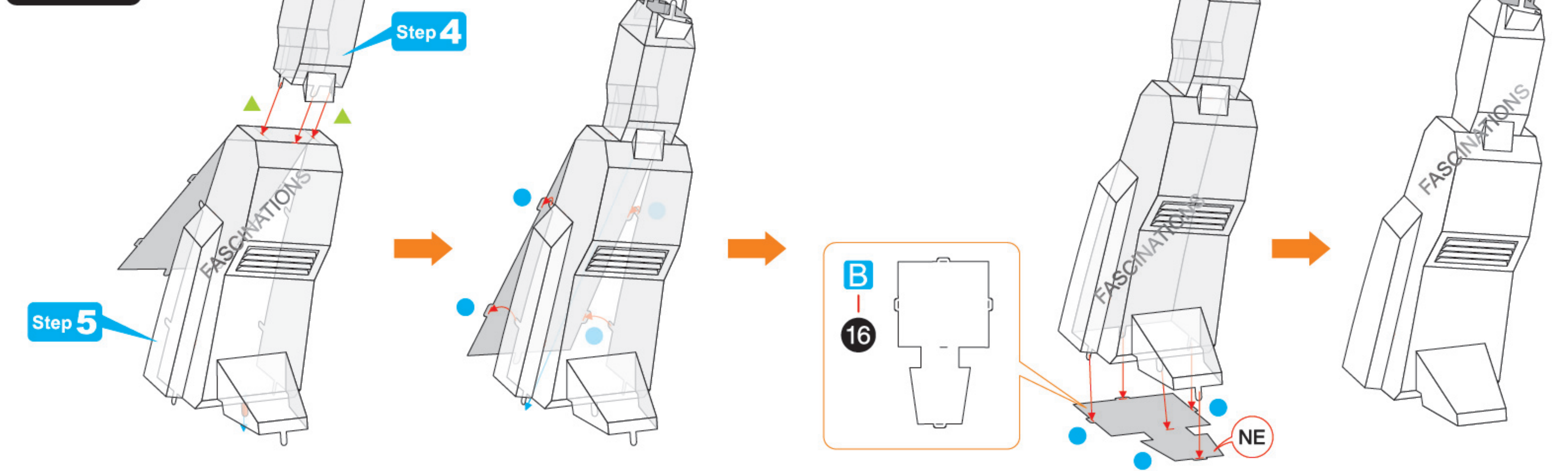
Step 4



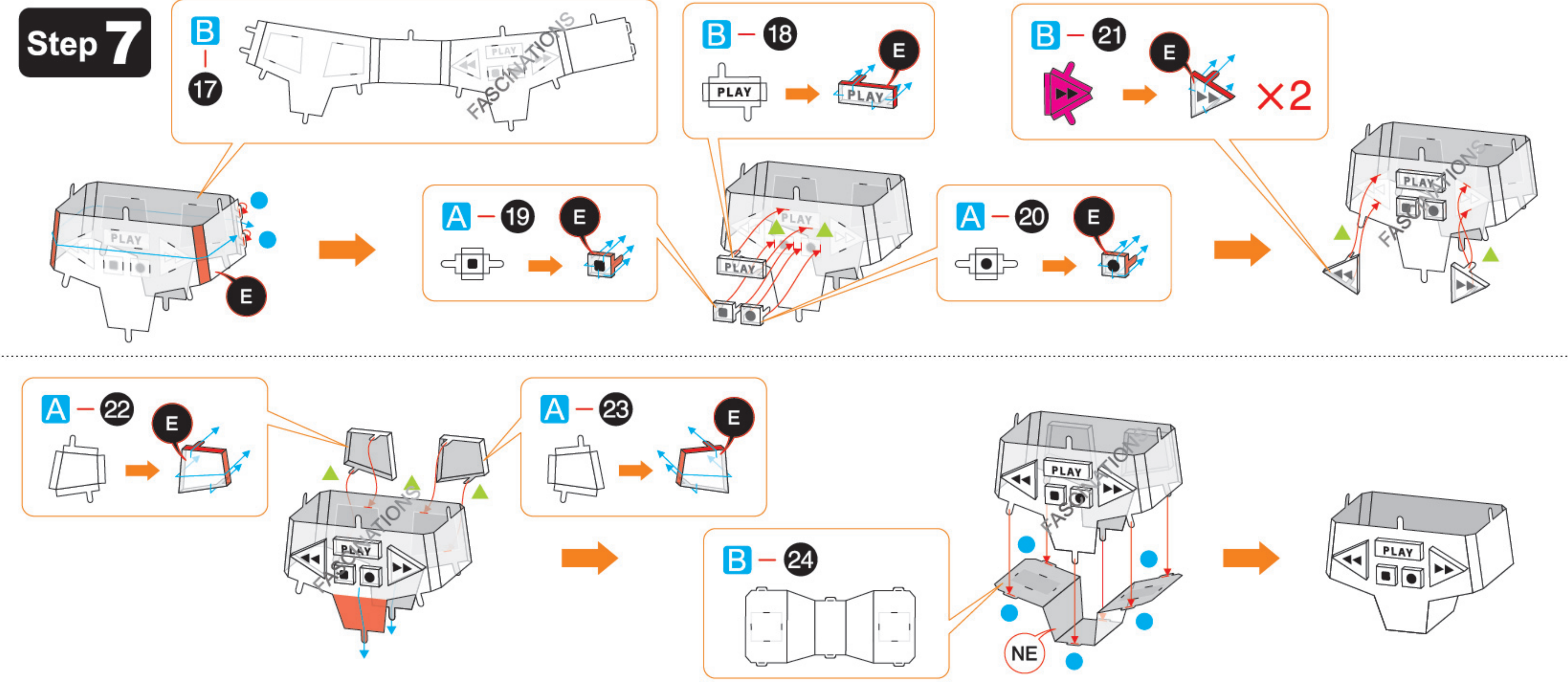
Step 5



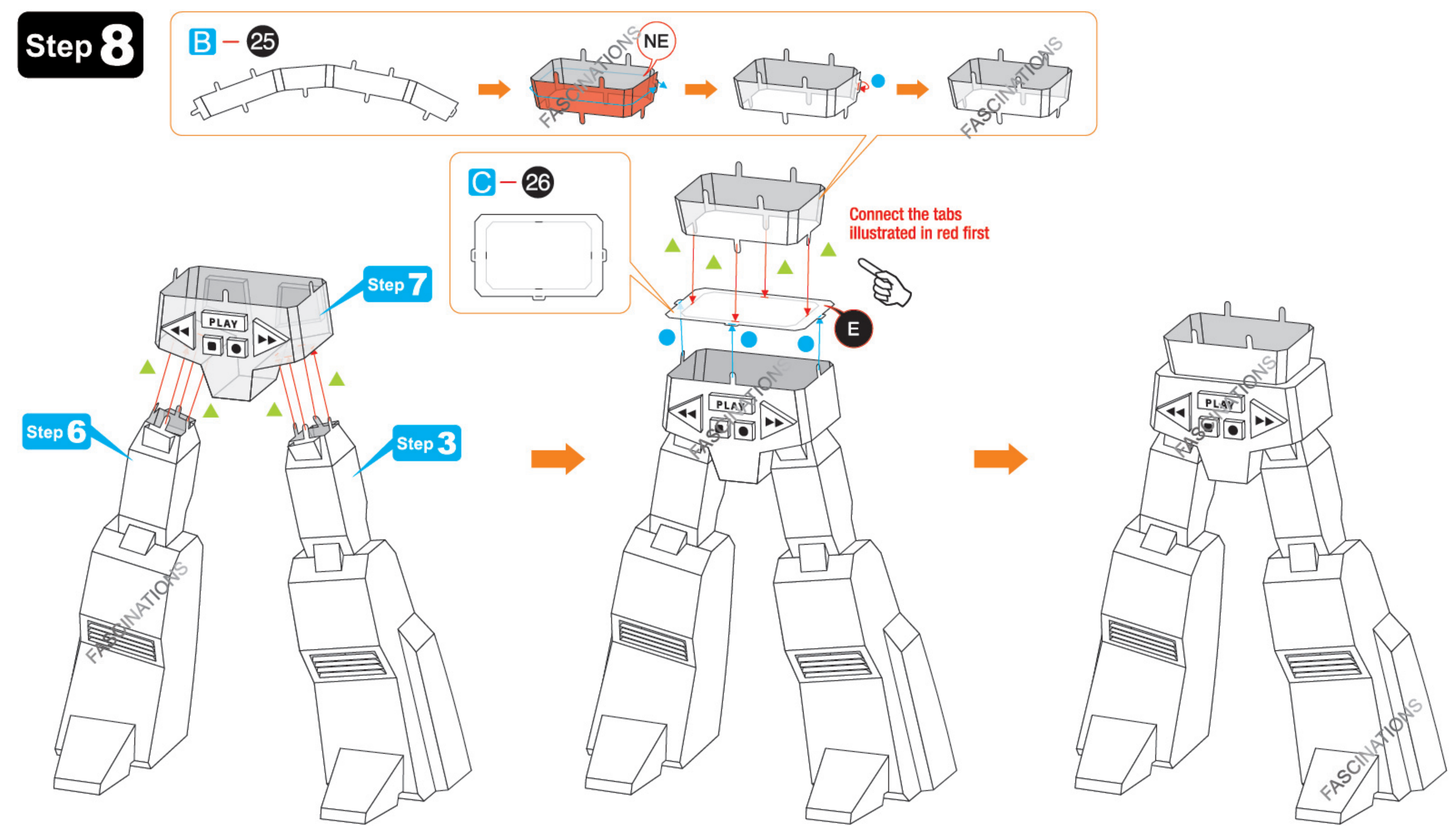
Step 6

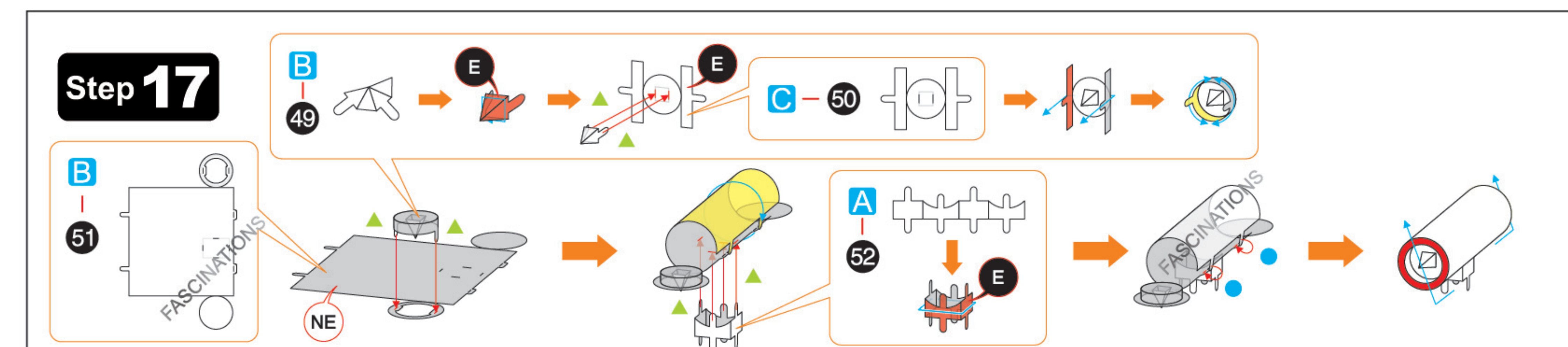
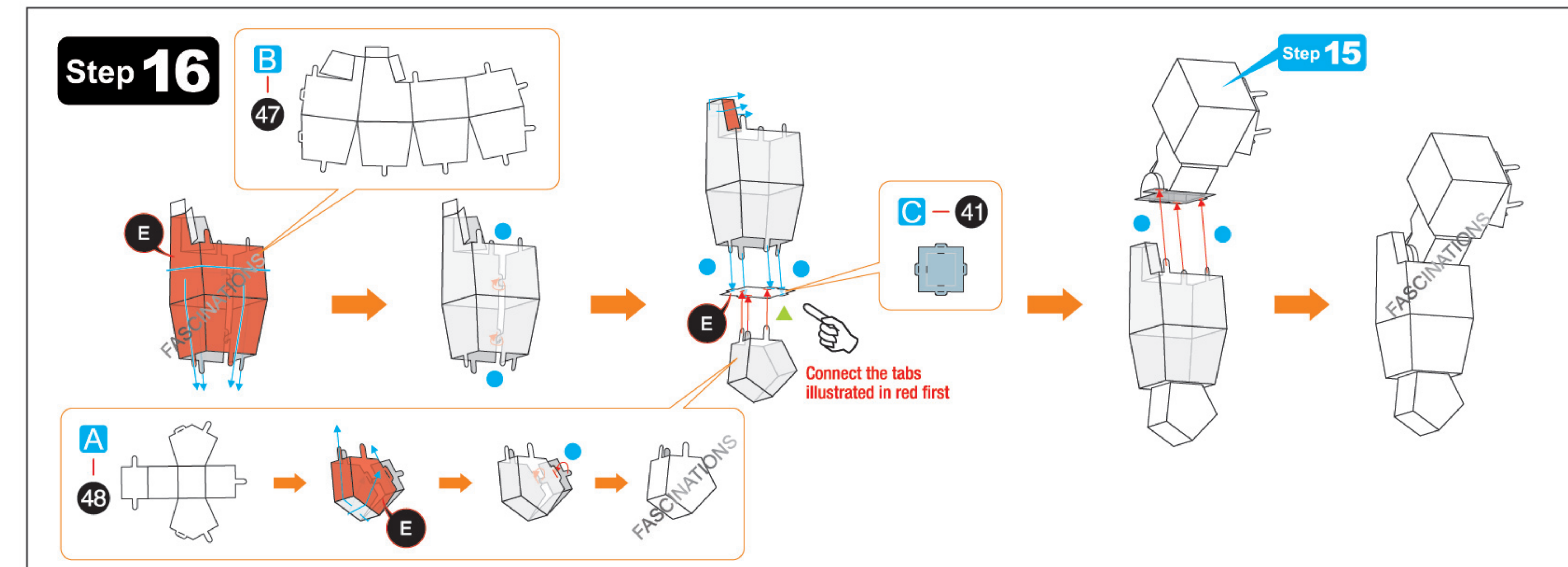
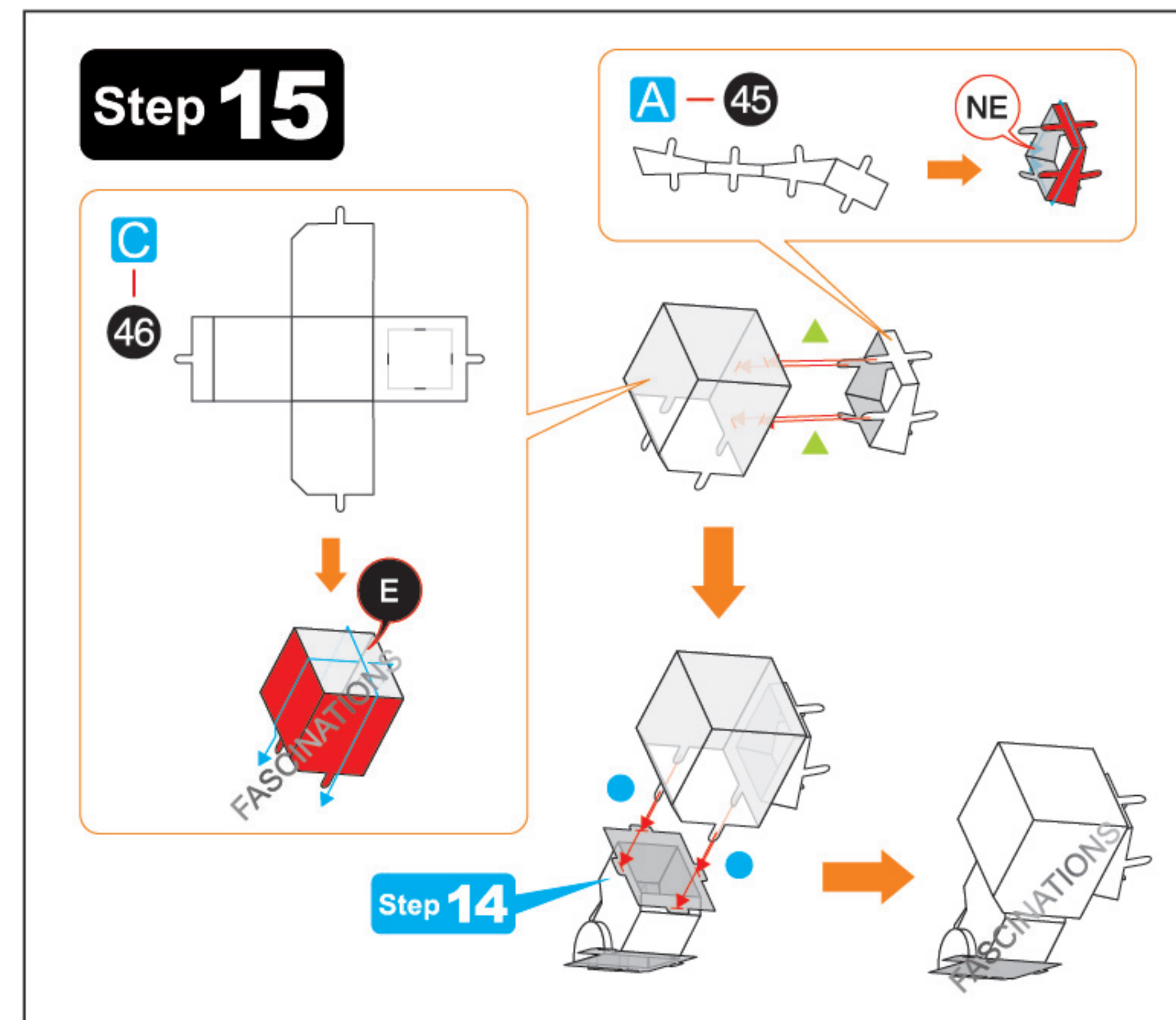
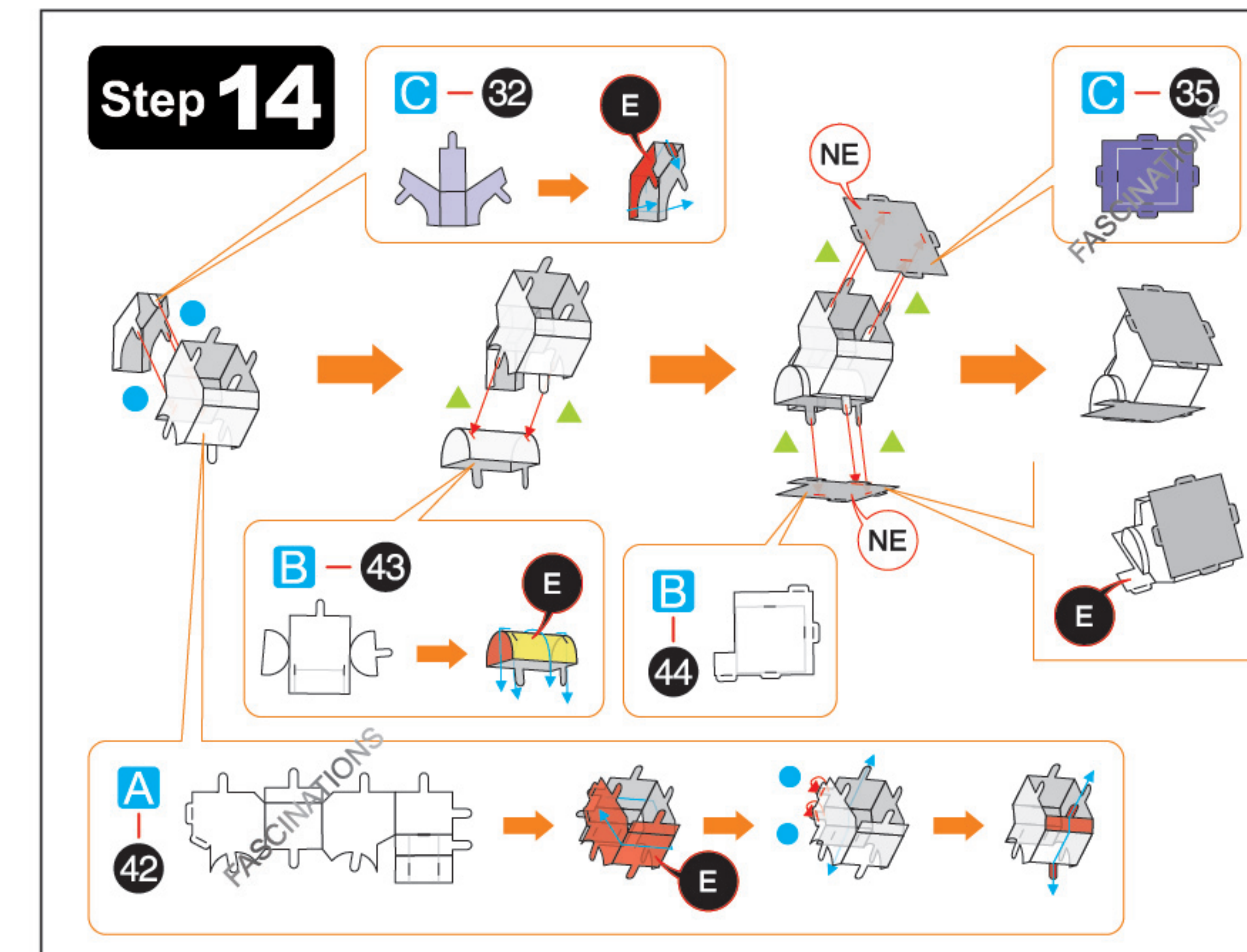
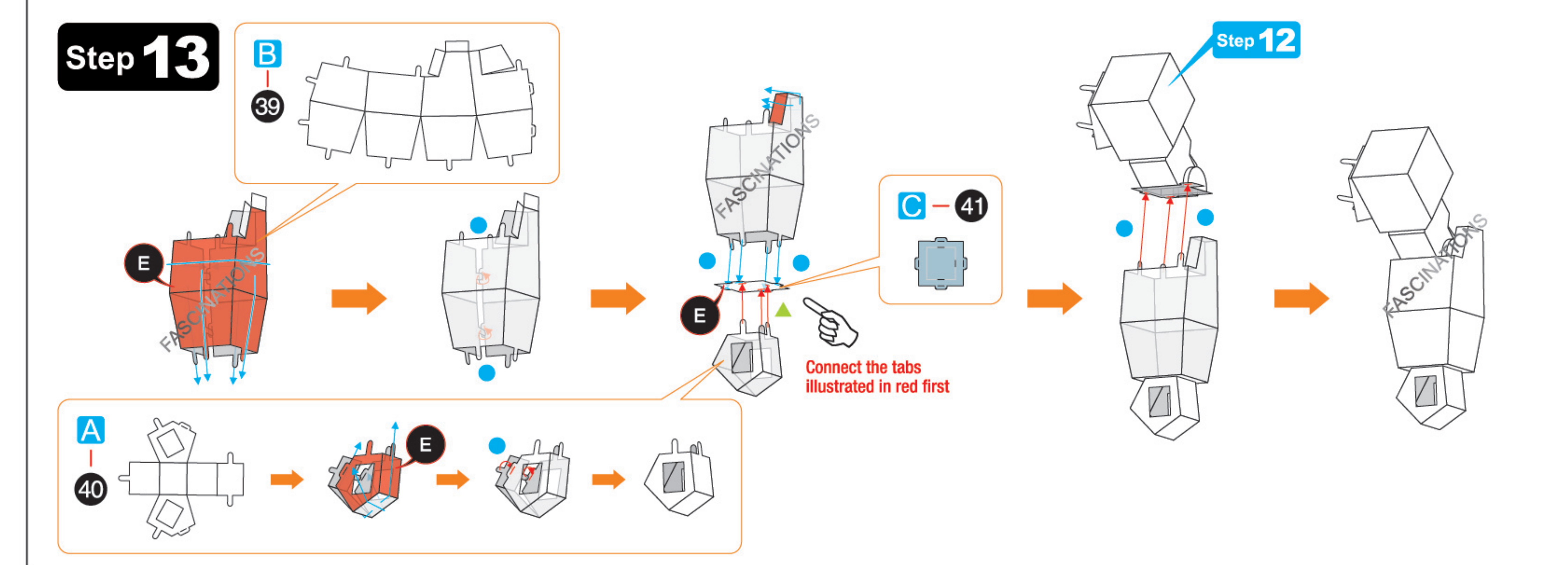
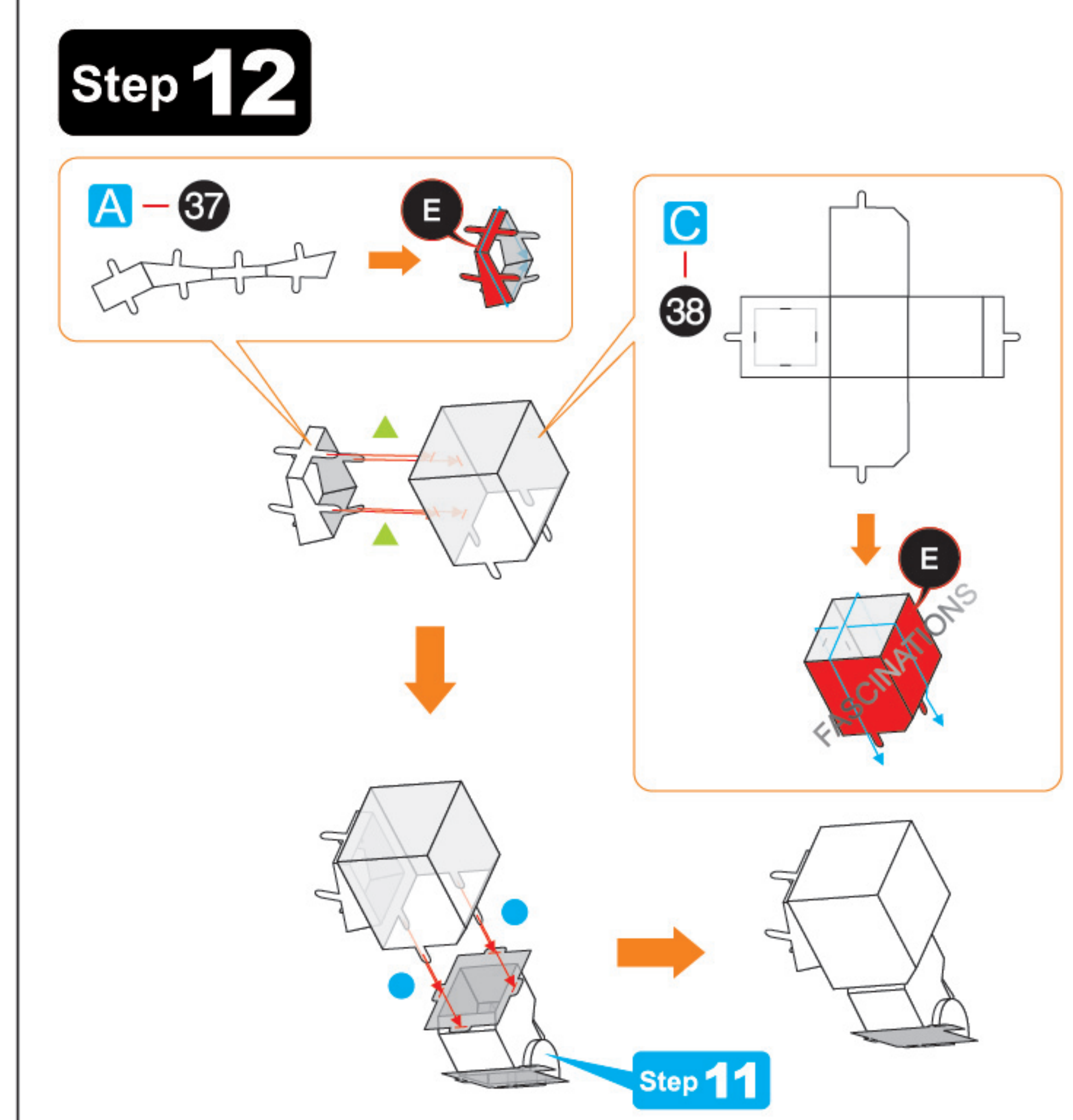
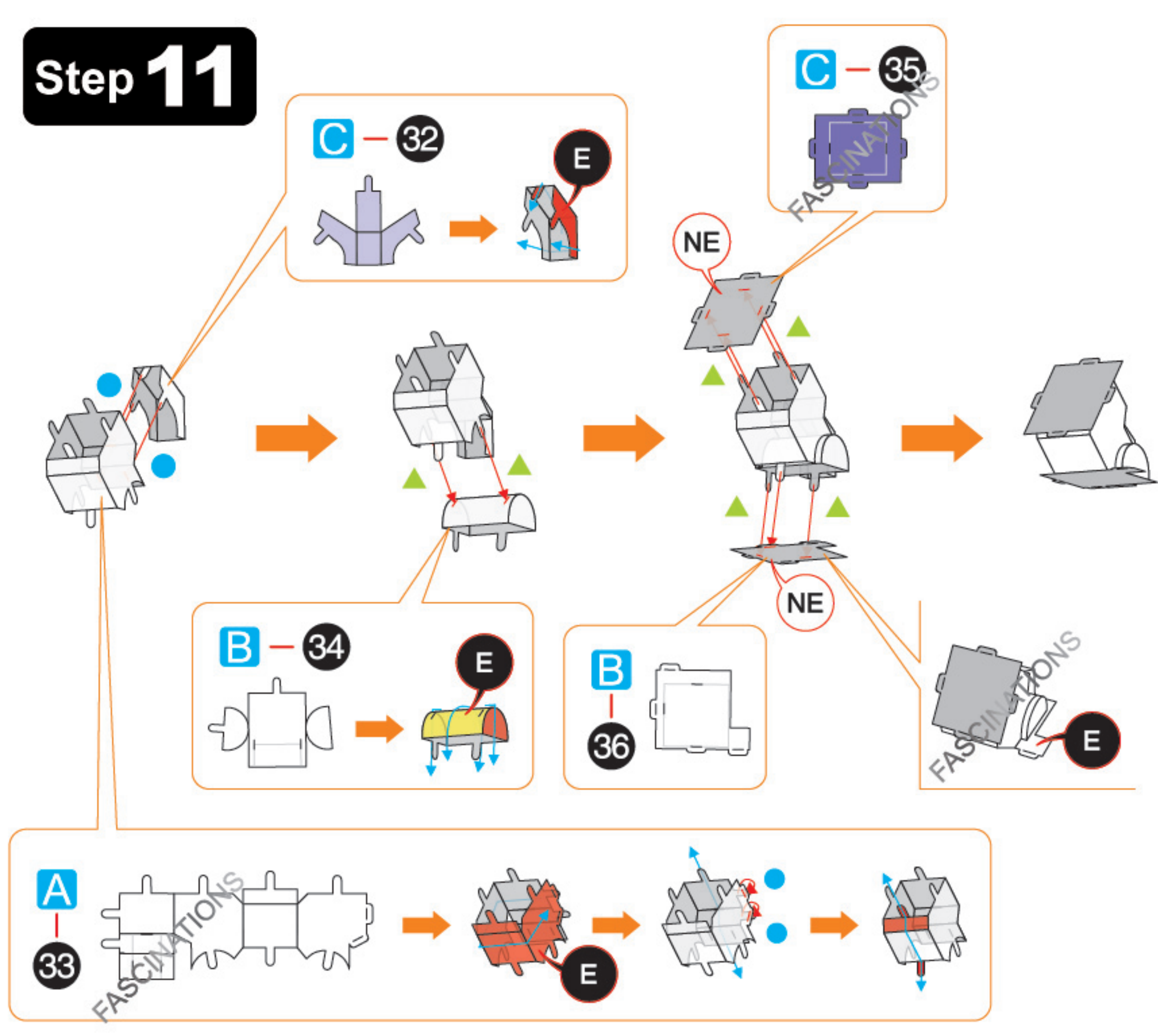
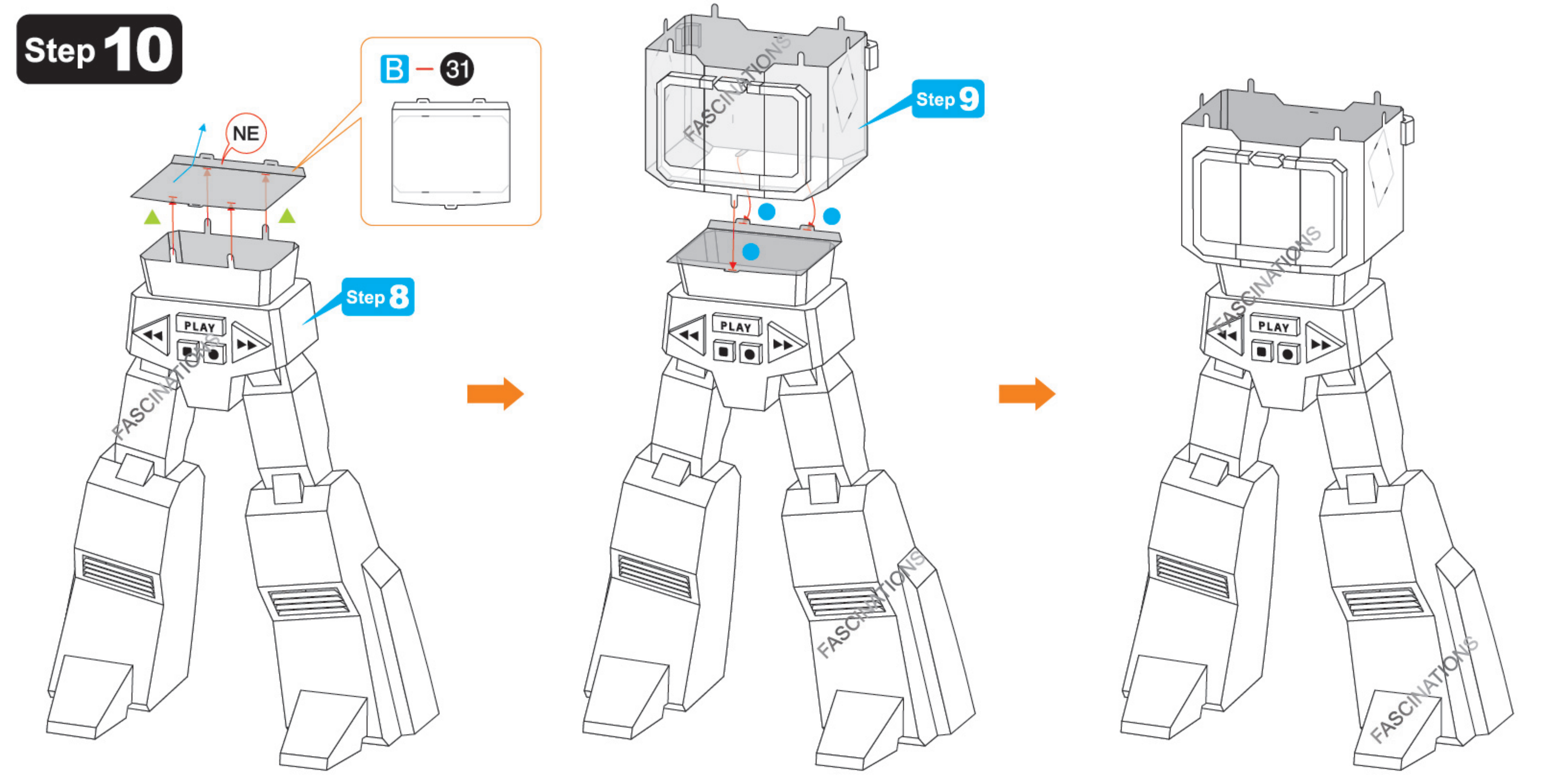
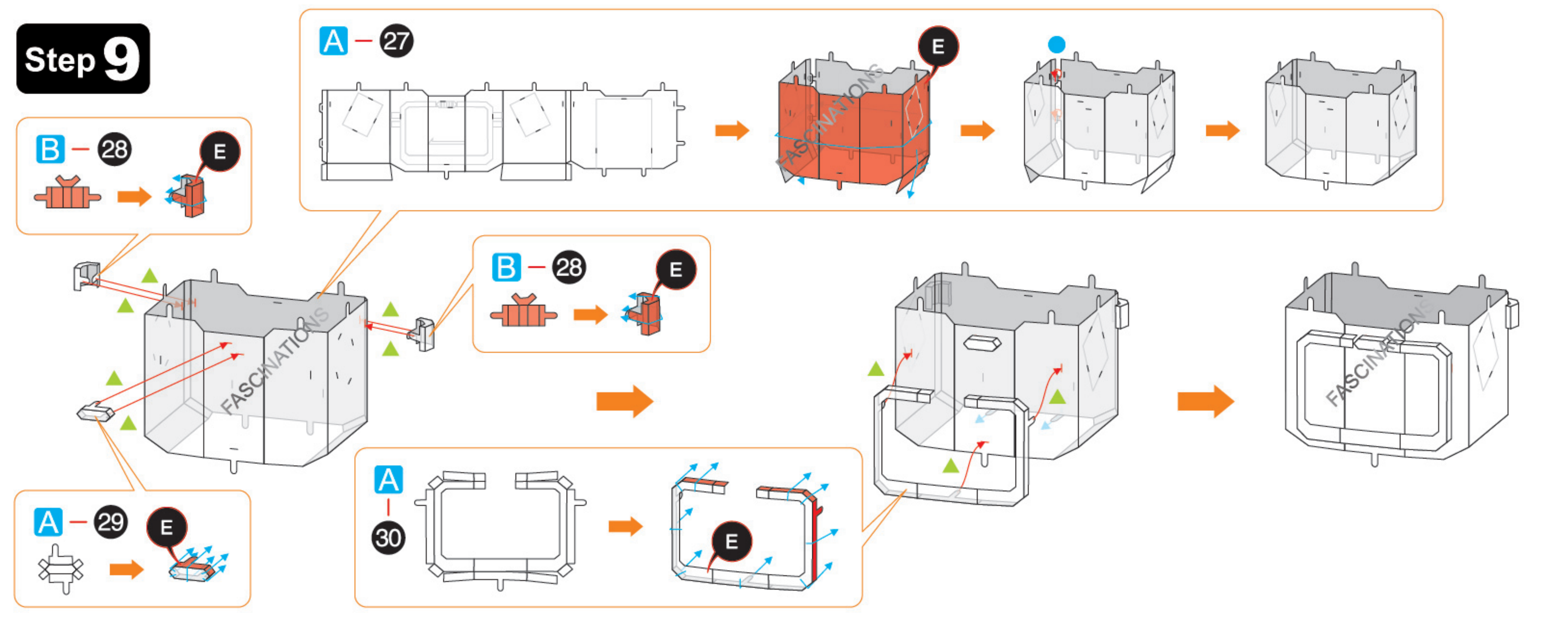


Step 7

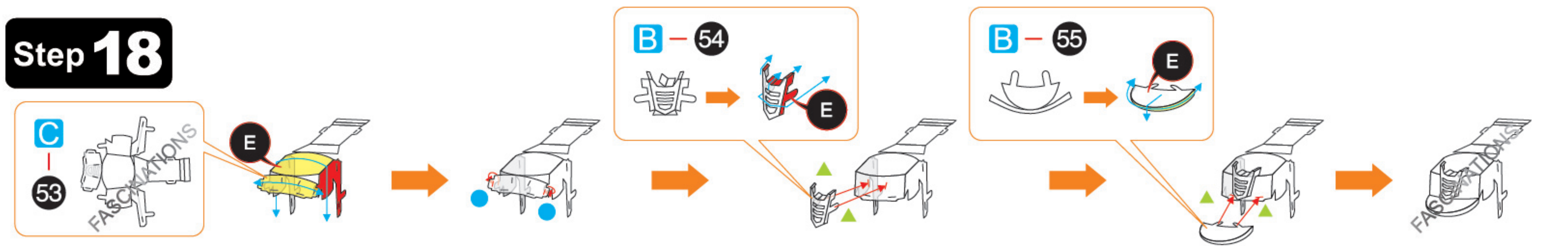


Step 8

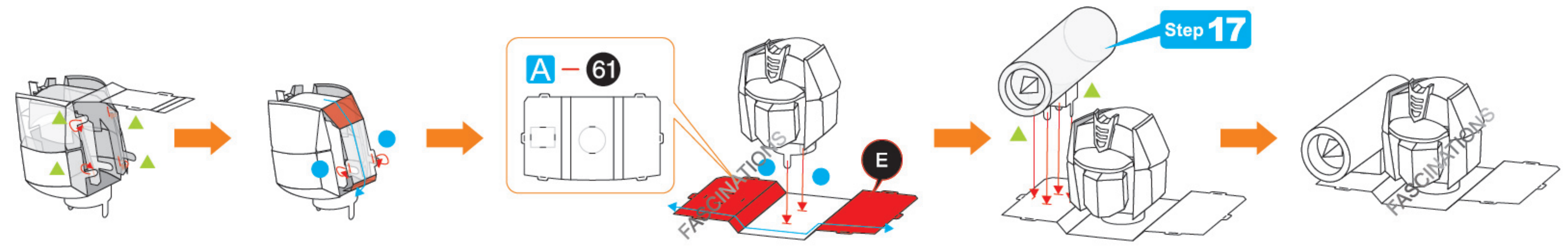
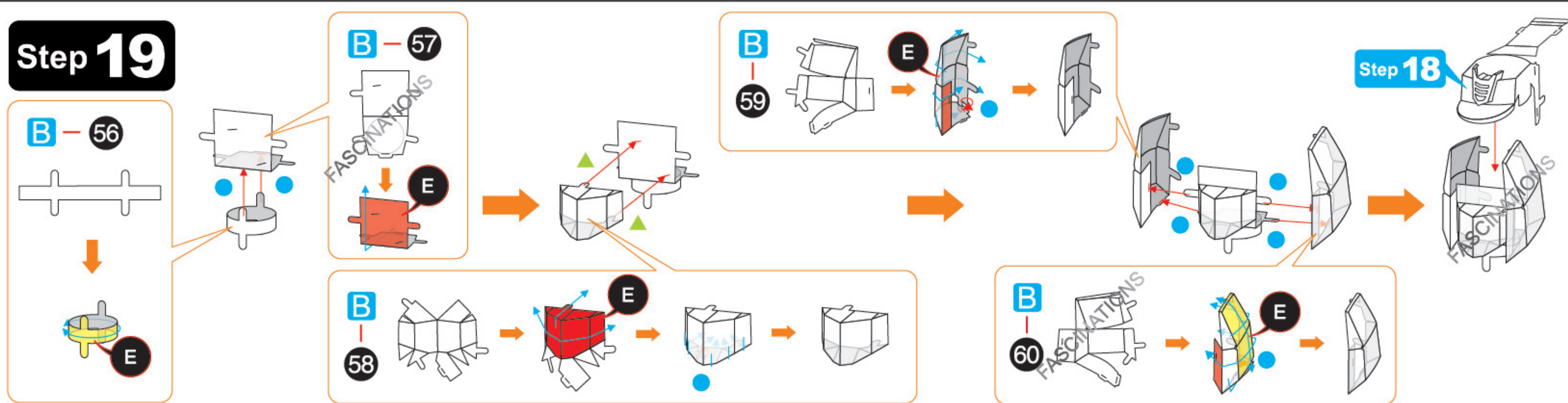




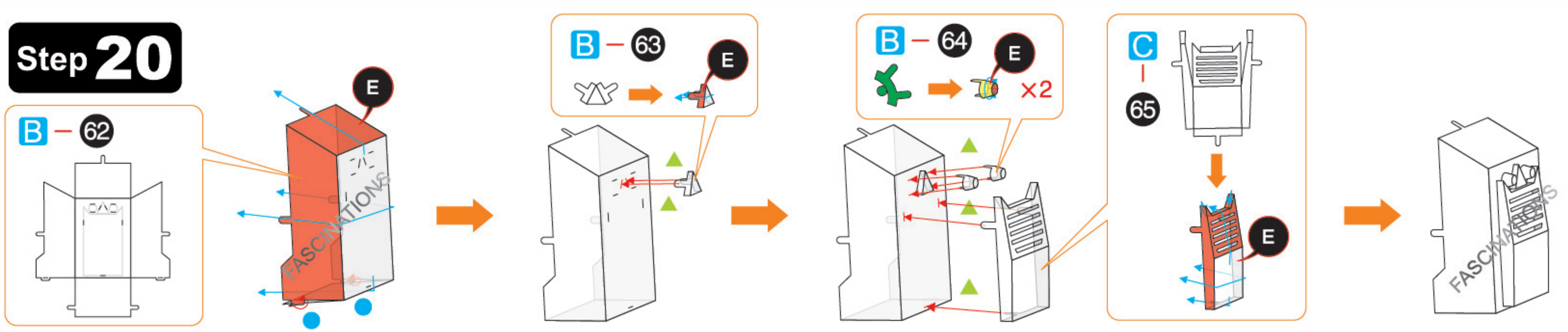
Step 18



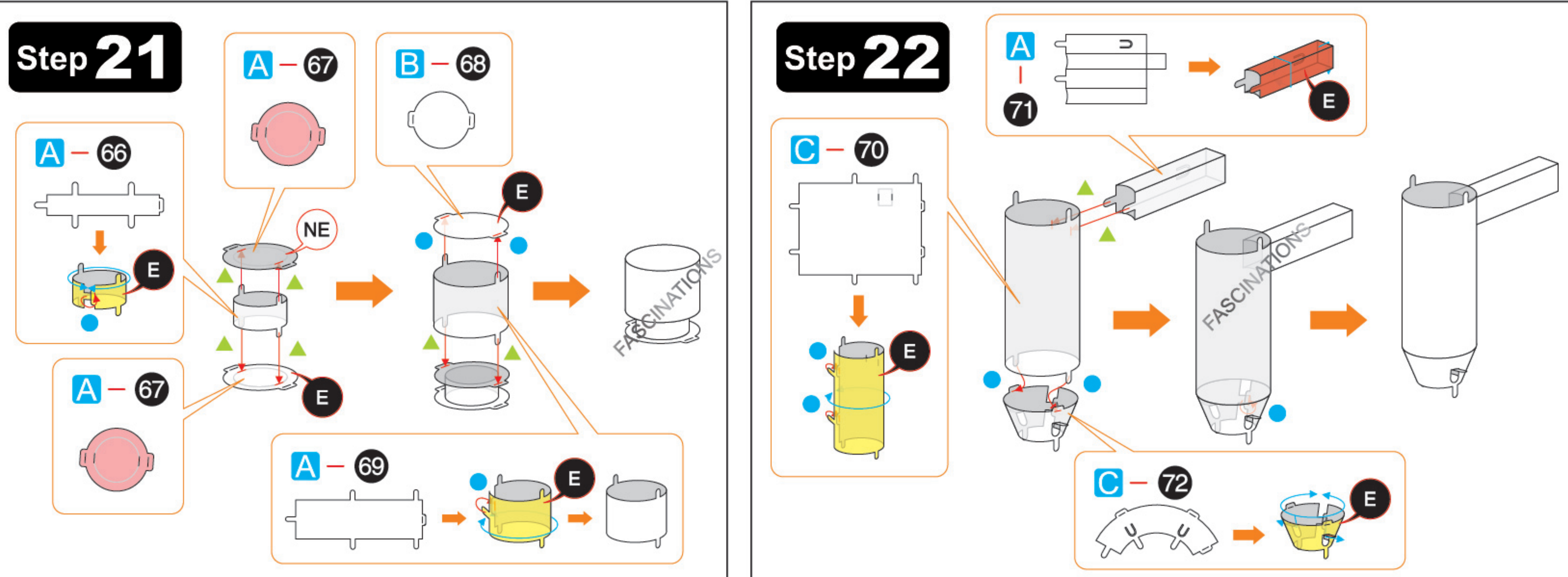
Step 19



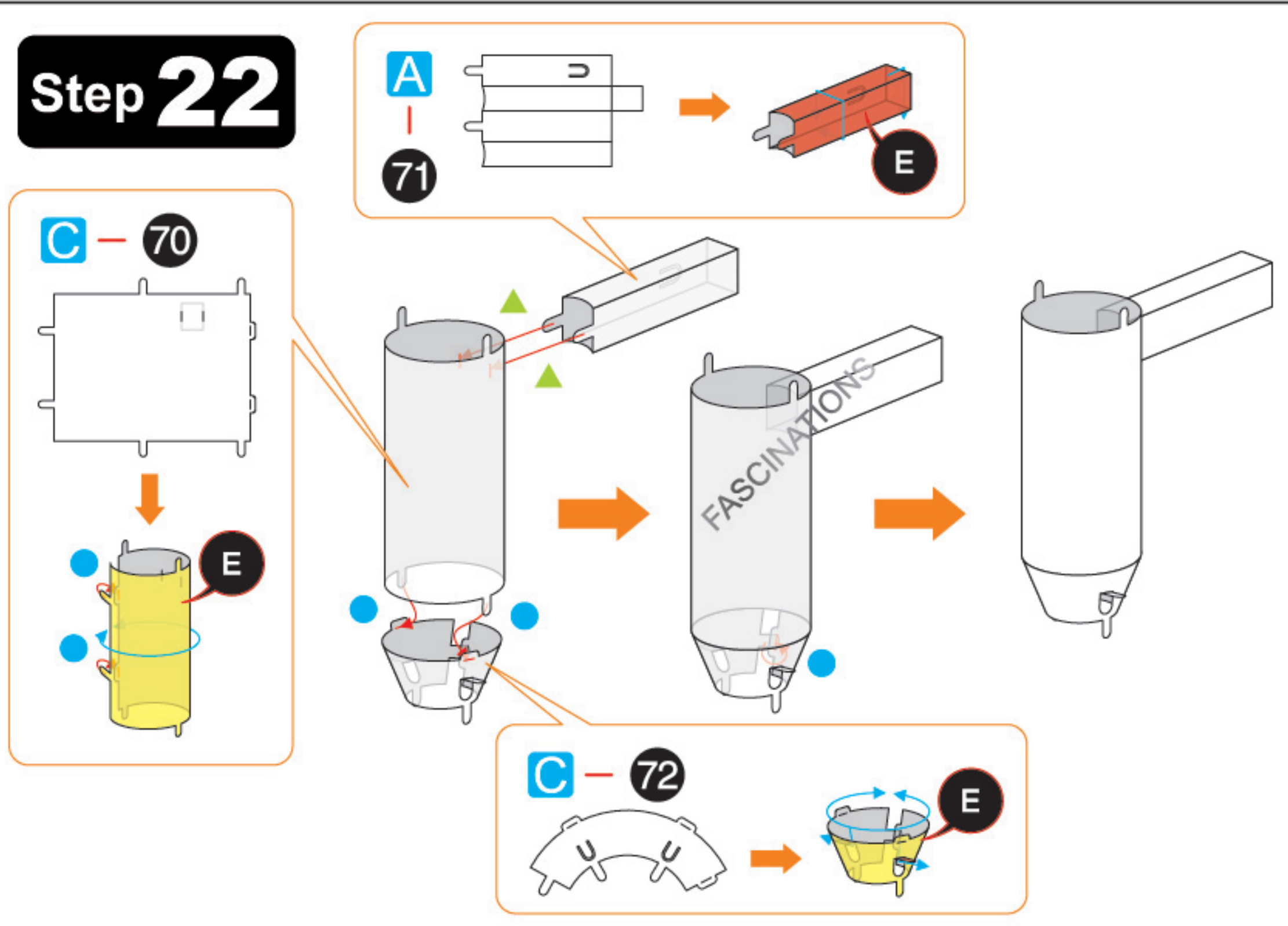
Step 20



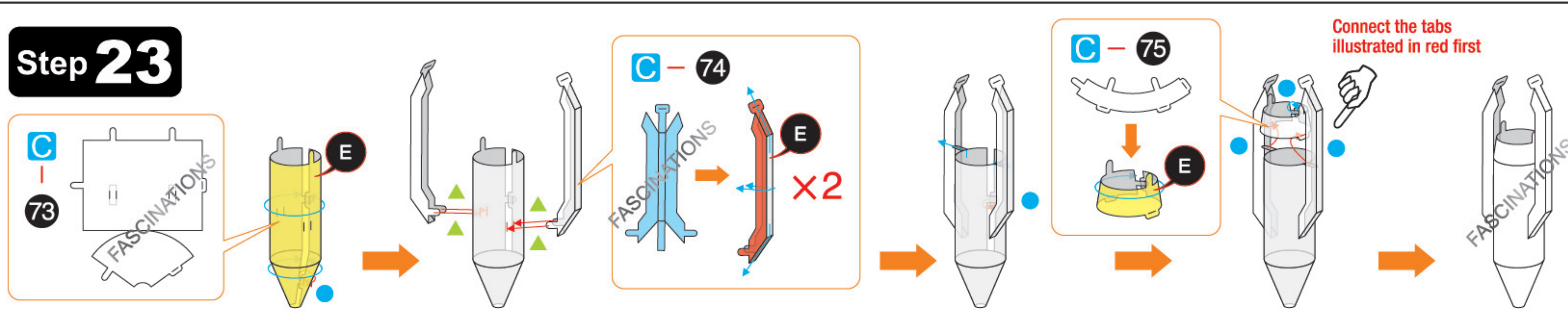
Step 21



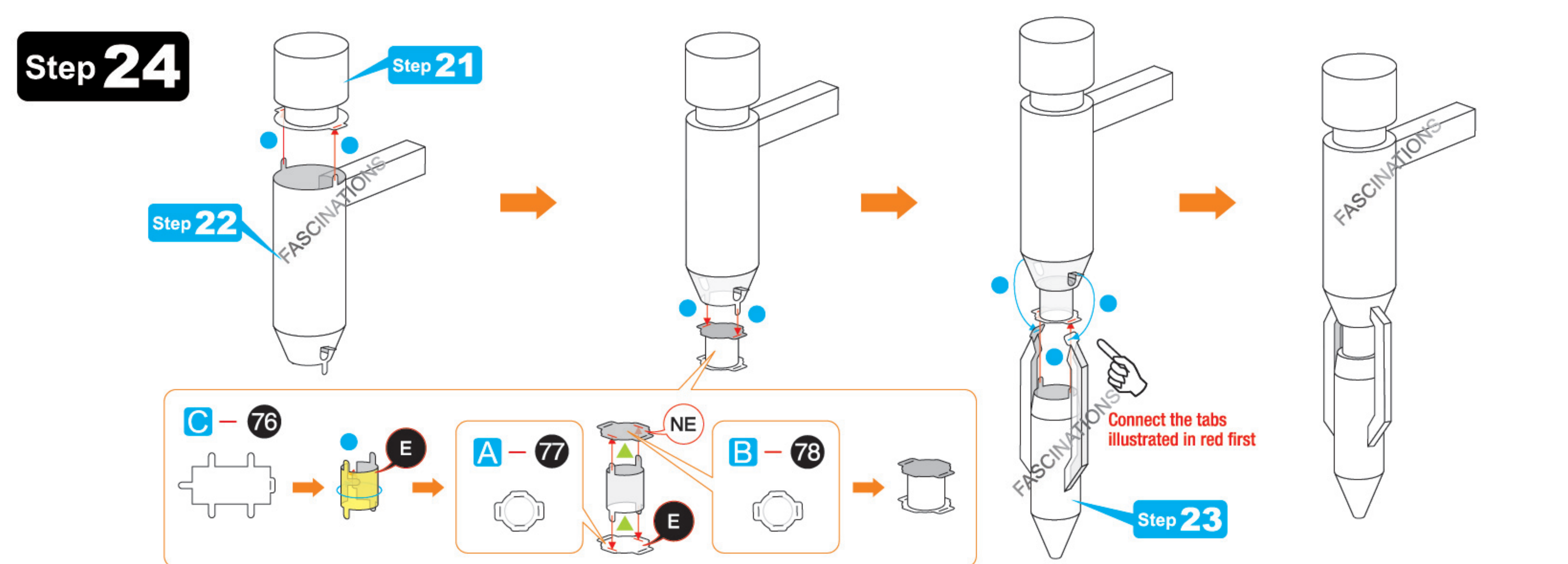
Step 22



Step 23



Step 24



Step 25

