

QUIDDITCH™ PITCH

MMS466

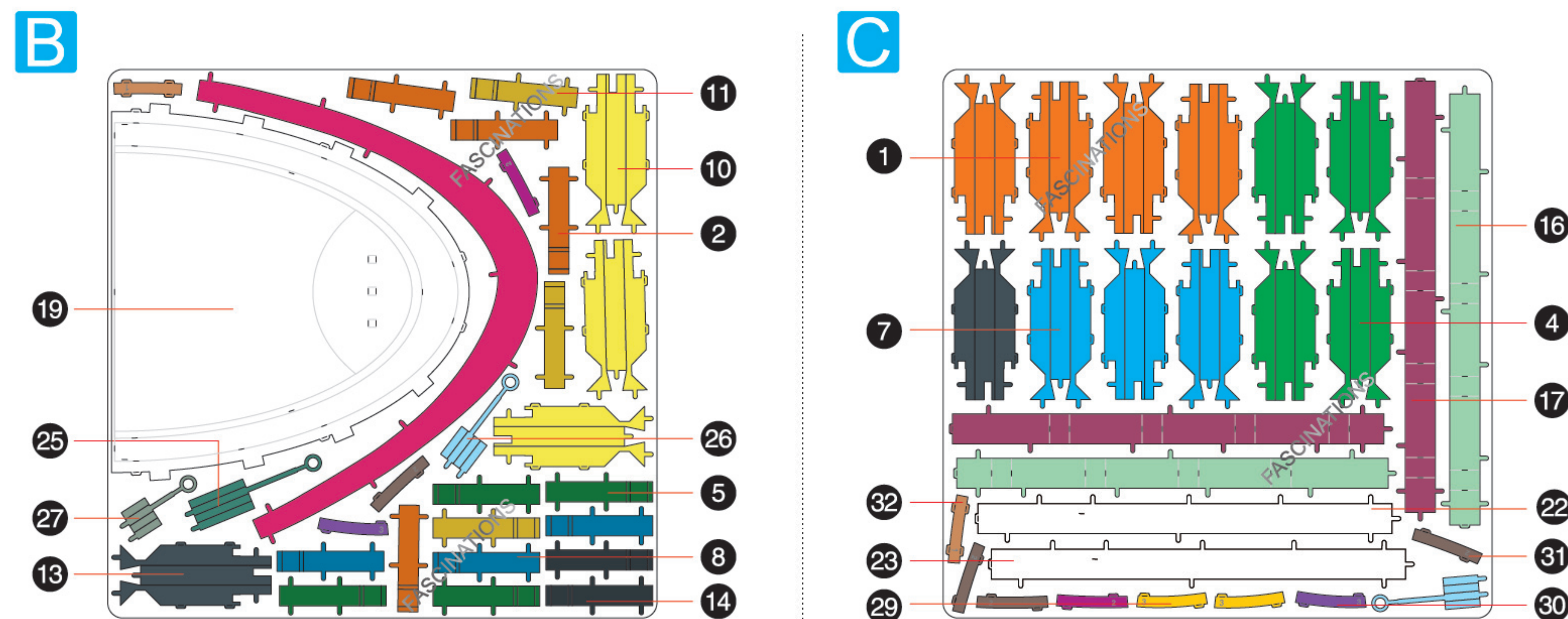
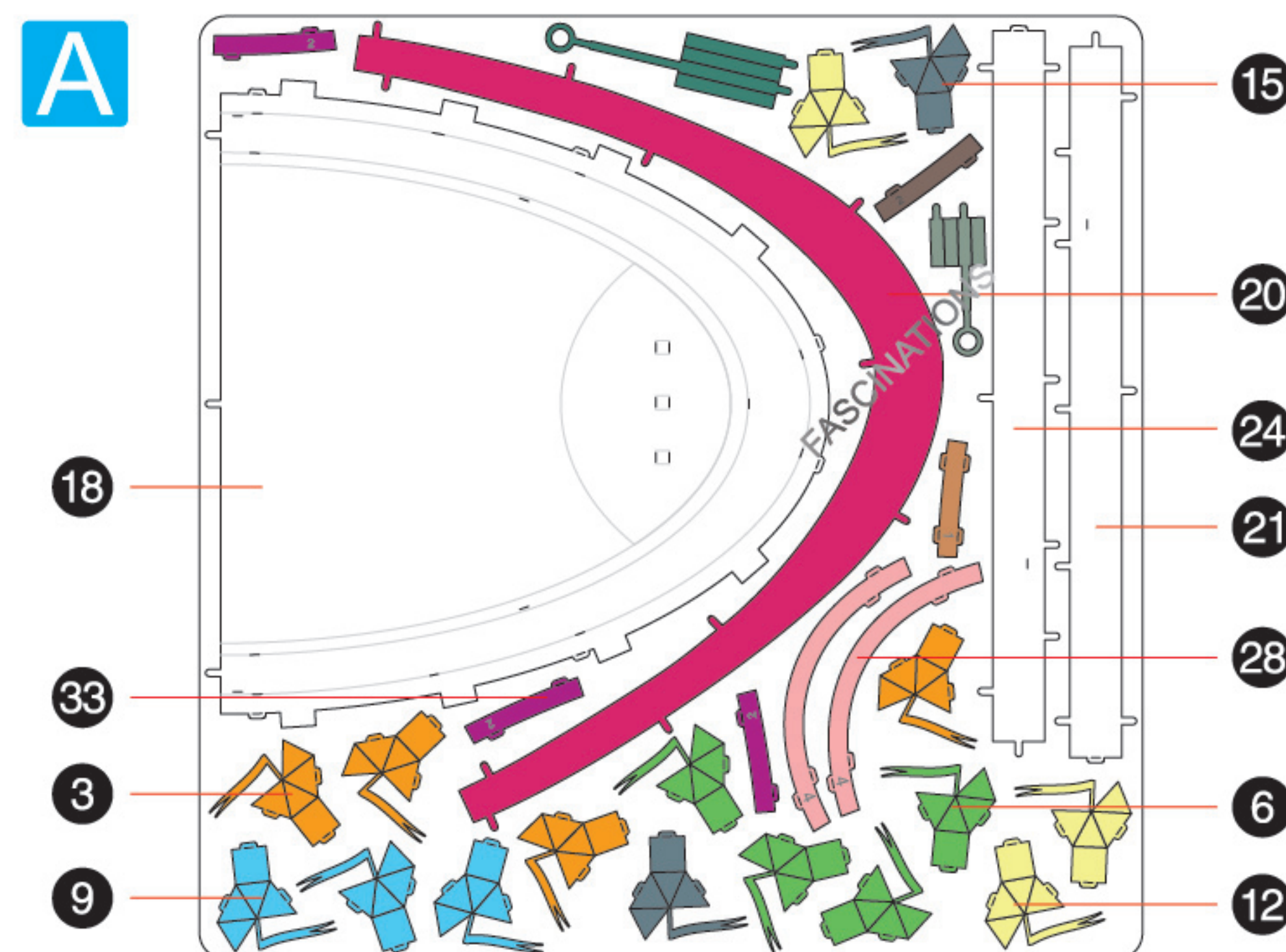
360°
view



It is highly recommended that you visit
www.metalearth.com/360/mms466
to see the completed model before assembling your own

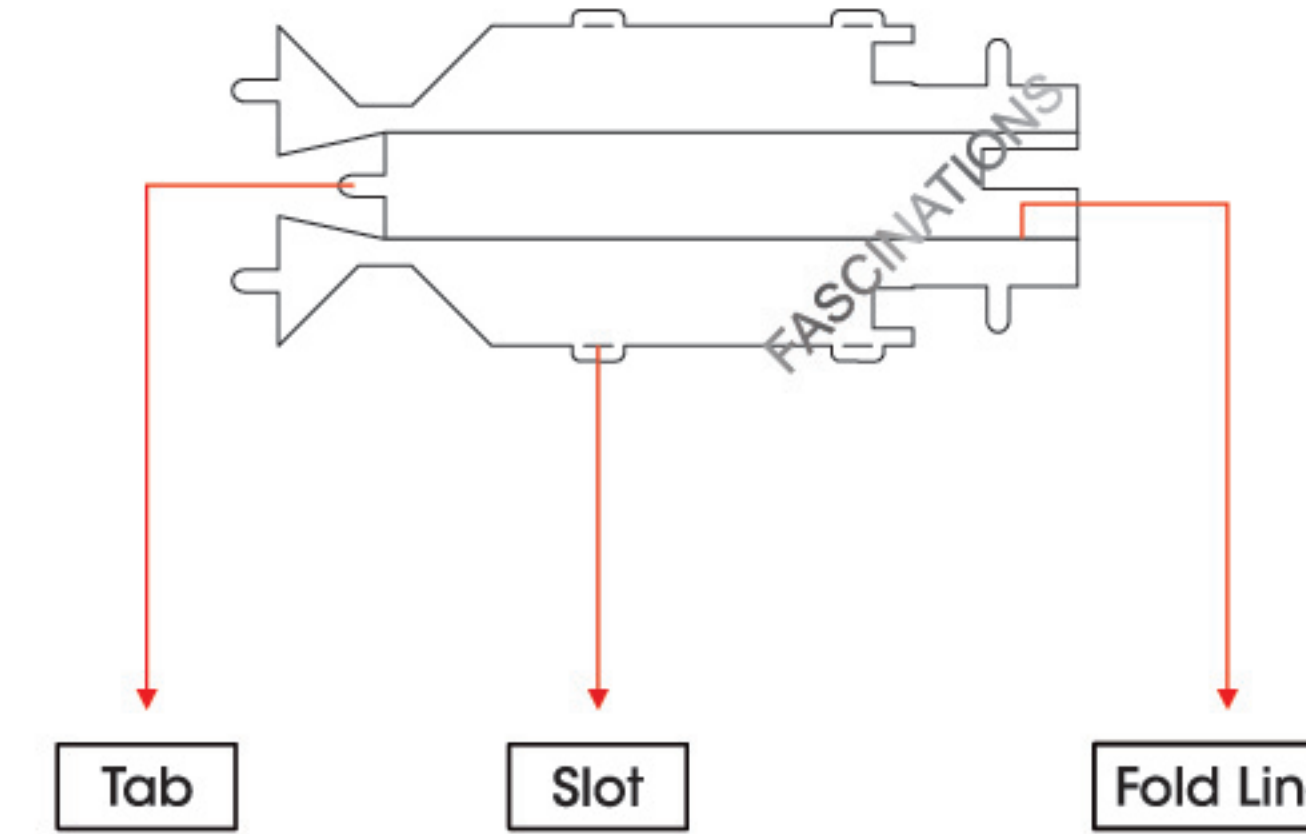
METAL SHEETS

Parts with same color are duplicates



TO CREATE THE BEST CONNECTIONS

C - 1



Legends:

- E** Engraved/ Color side
- NE** Non - engraved/ Silver side
- Attention point
- Insert tab and bend 90 degrees
- Insert tab and twist 90 degrees

Recommended tools:

- Wire cutters: helpful for taking parts from the metal sheets.
- Tweezers or needle nose pliers: helpful for folding parts, bending and twisting tabs.

Assembly tip:

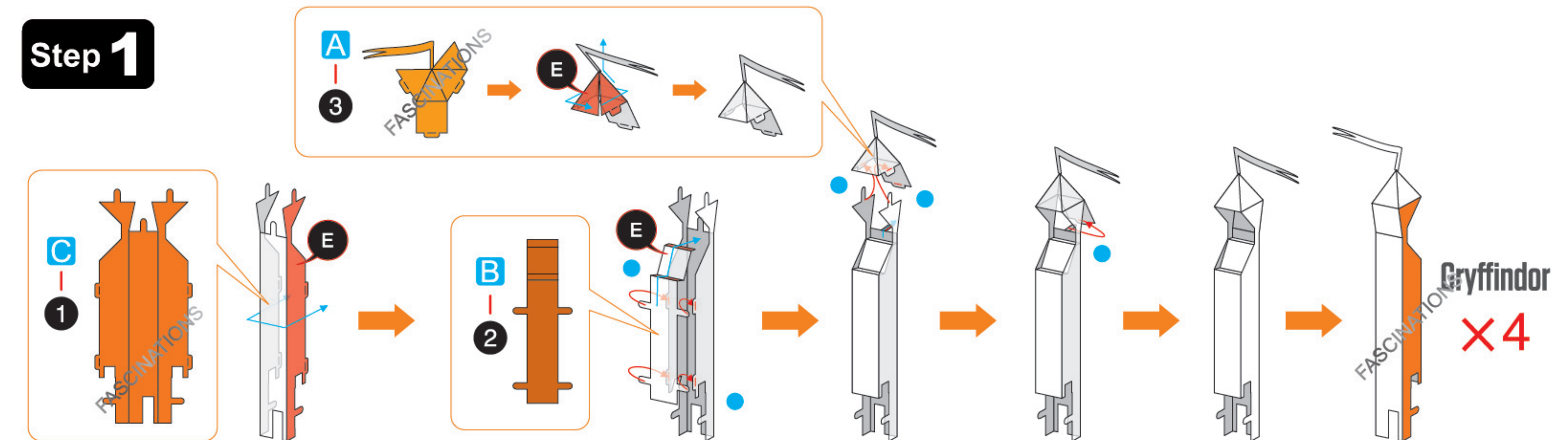
If needed, slightly twist tabs to hold parts together then untwist and bend them down for a nice finish.



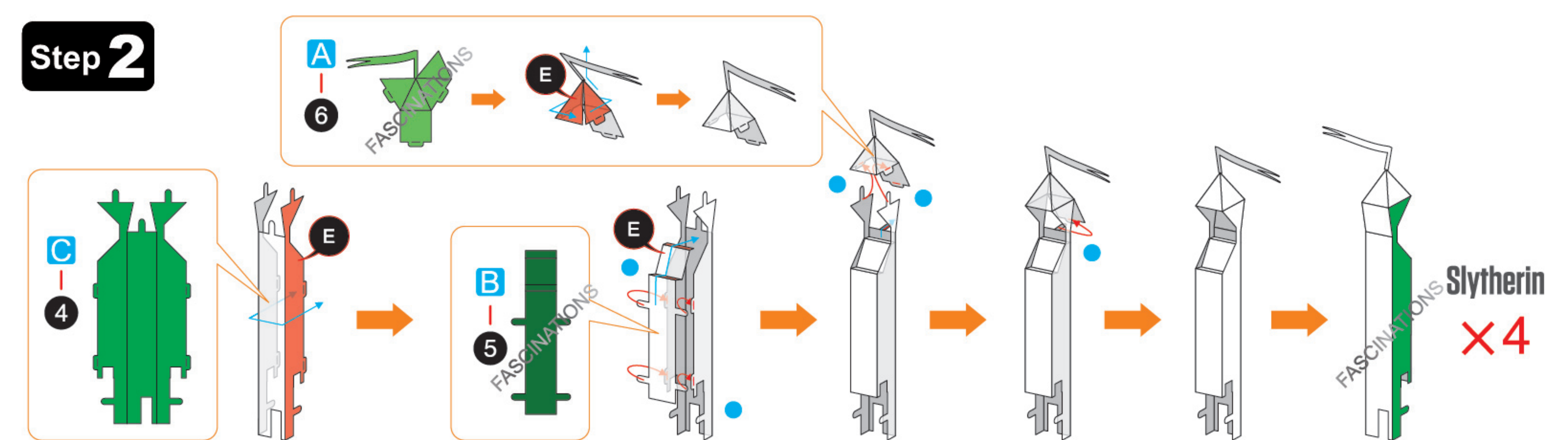
In order to avoid possible injury from sharp edges, please carefully discard the metal sheets after parts have been removed.

ASSEMBLY STEPS

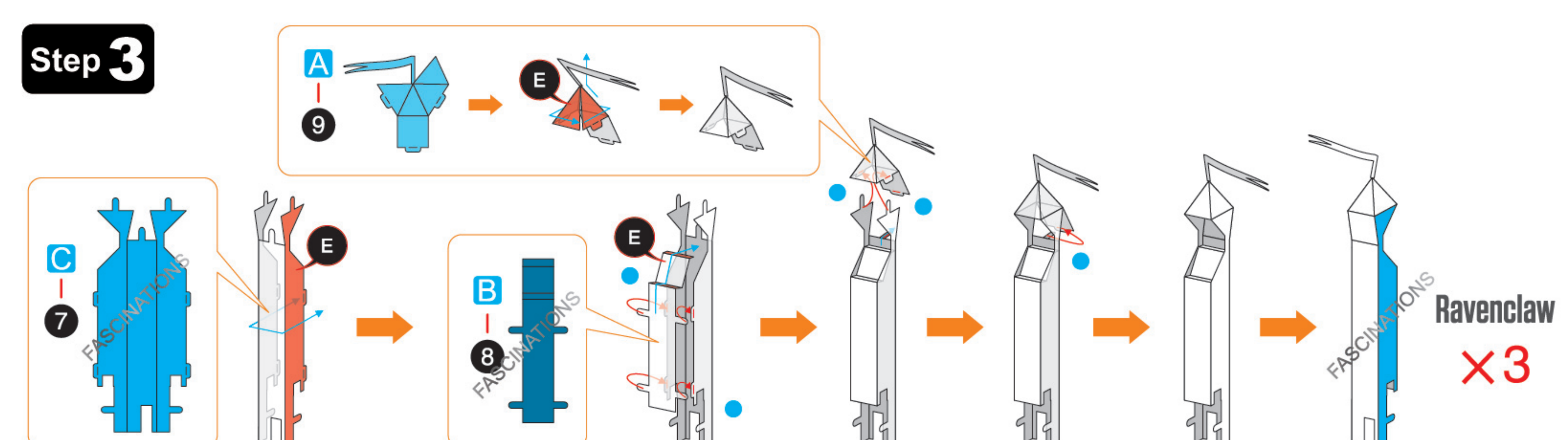
Step 1



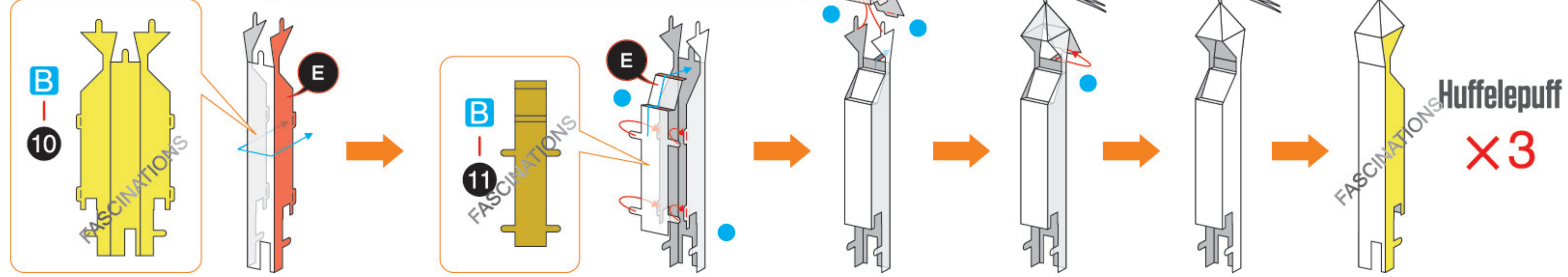
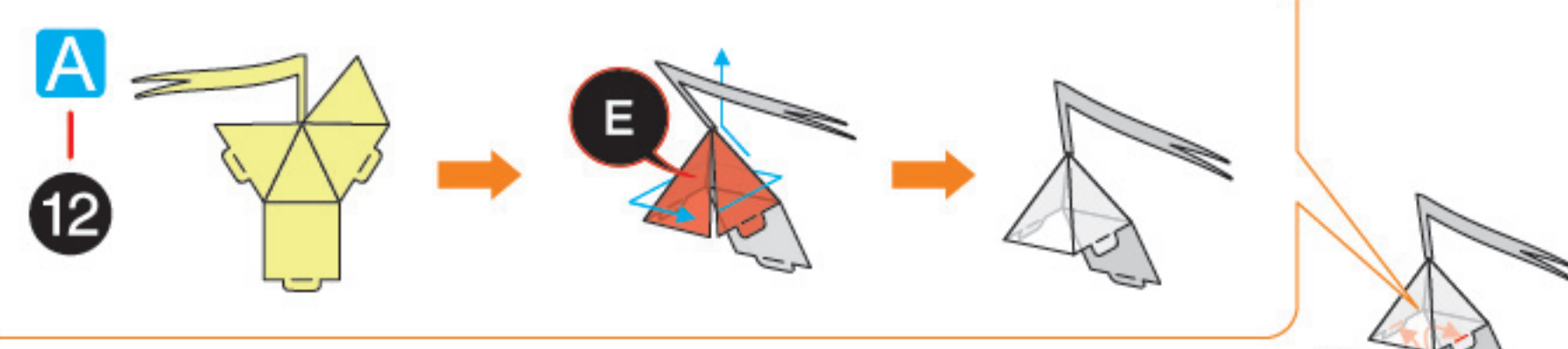
Step 2



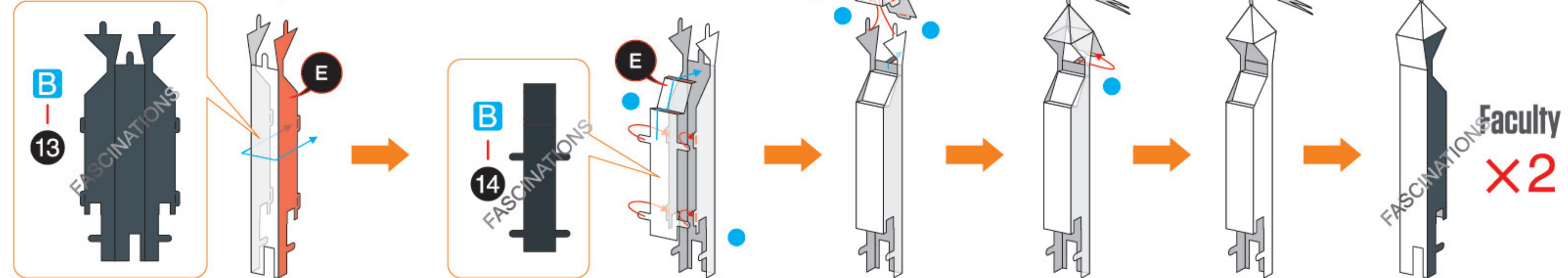
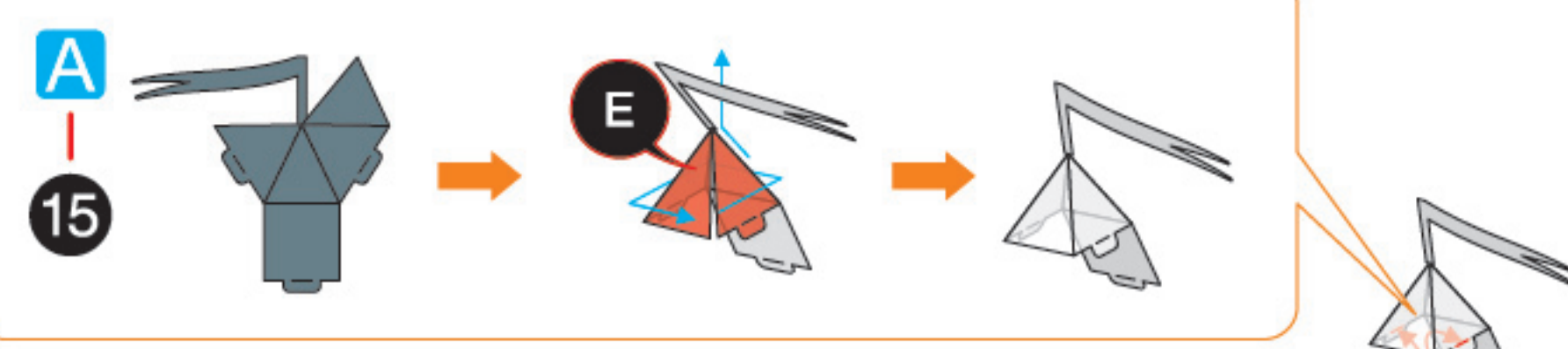
Step 3



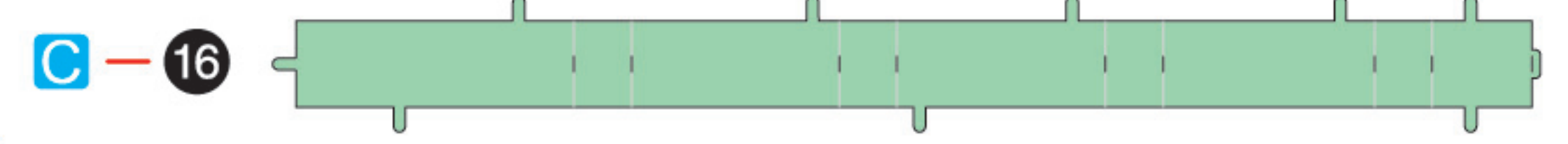
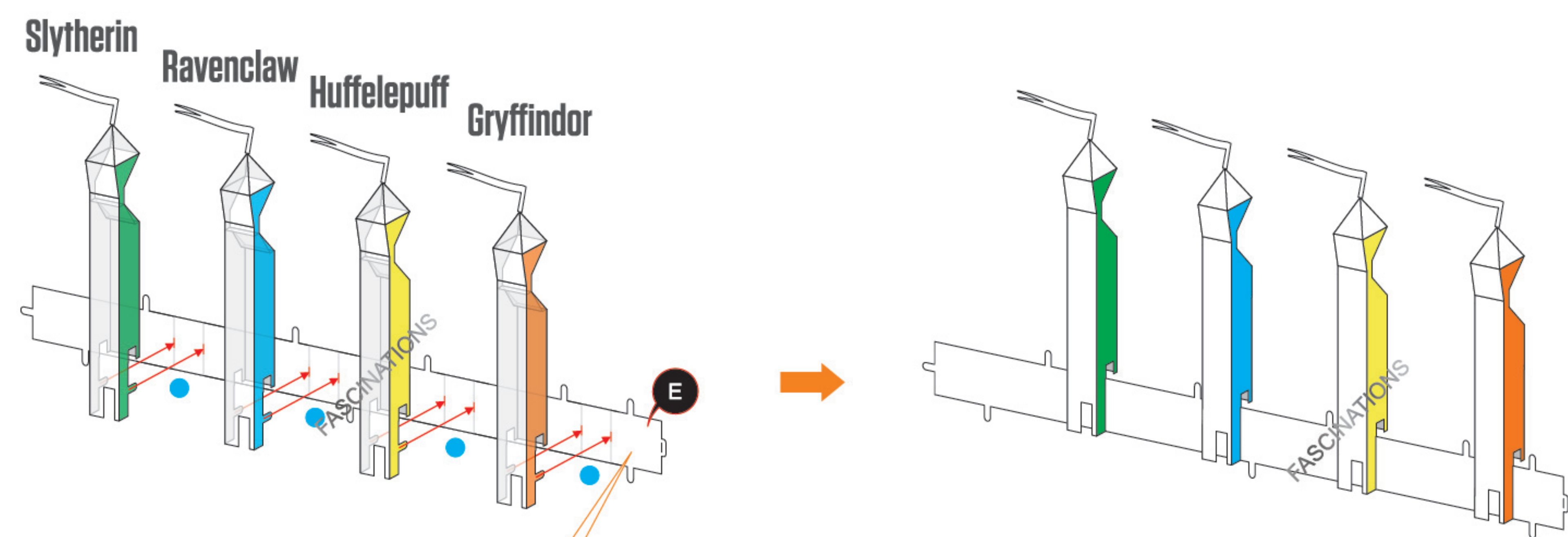
Step 4



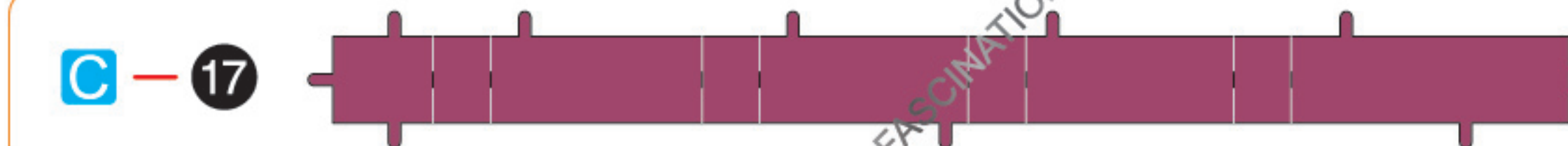
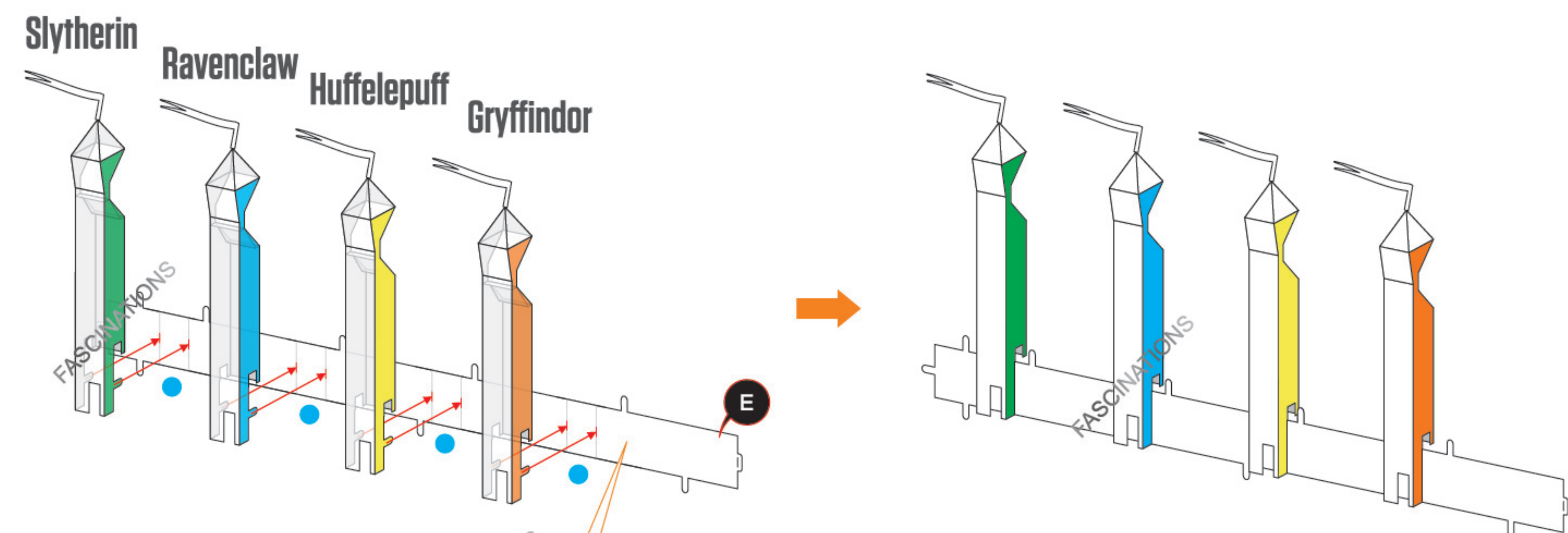
Step 5



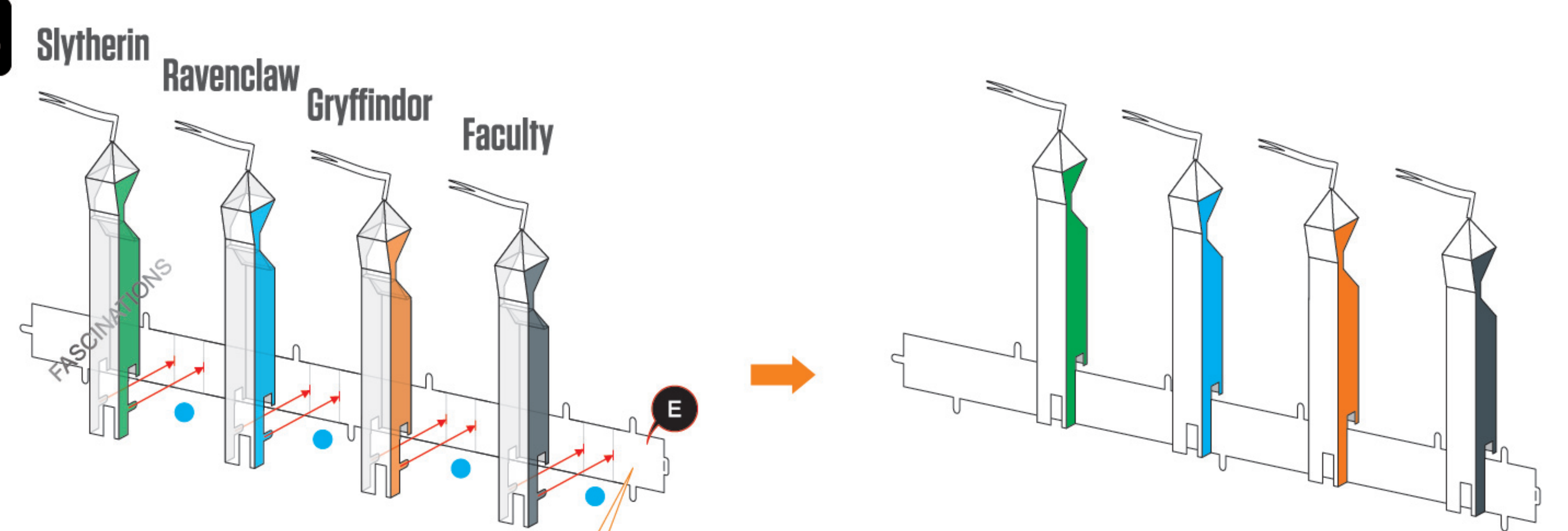
Step 6



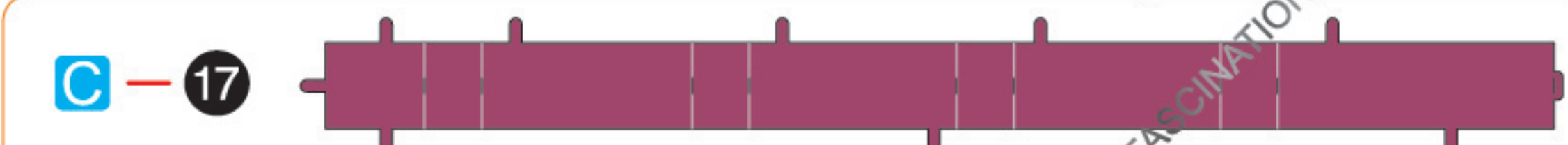
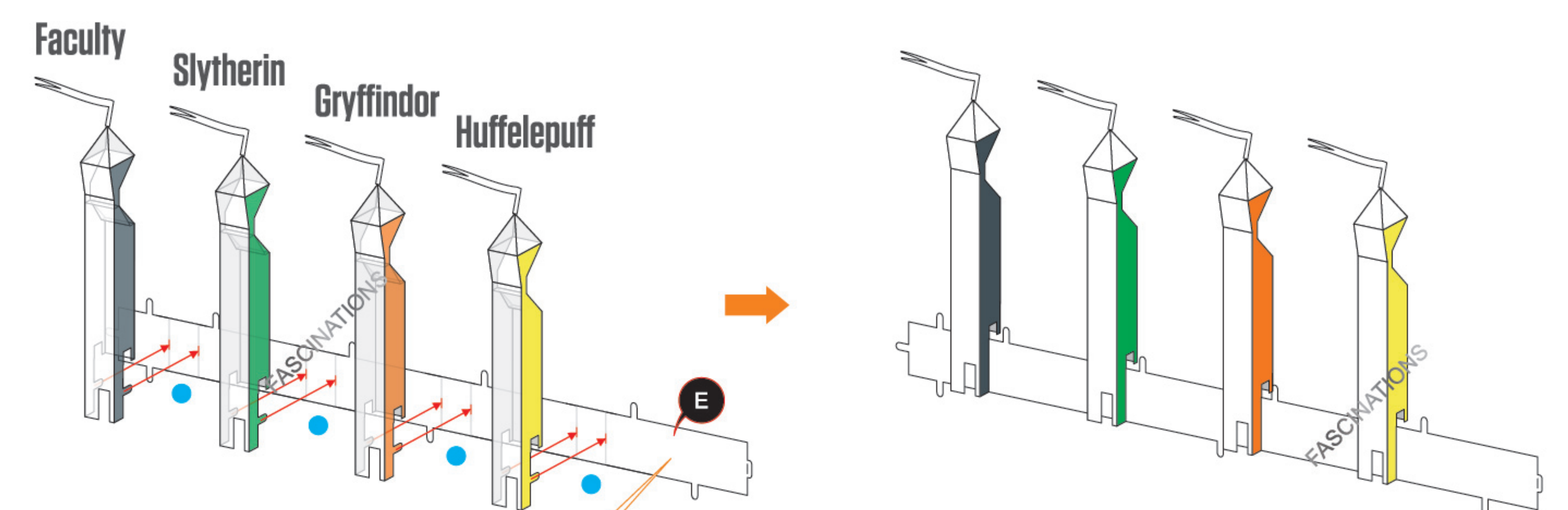
Step 7



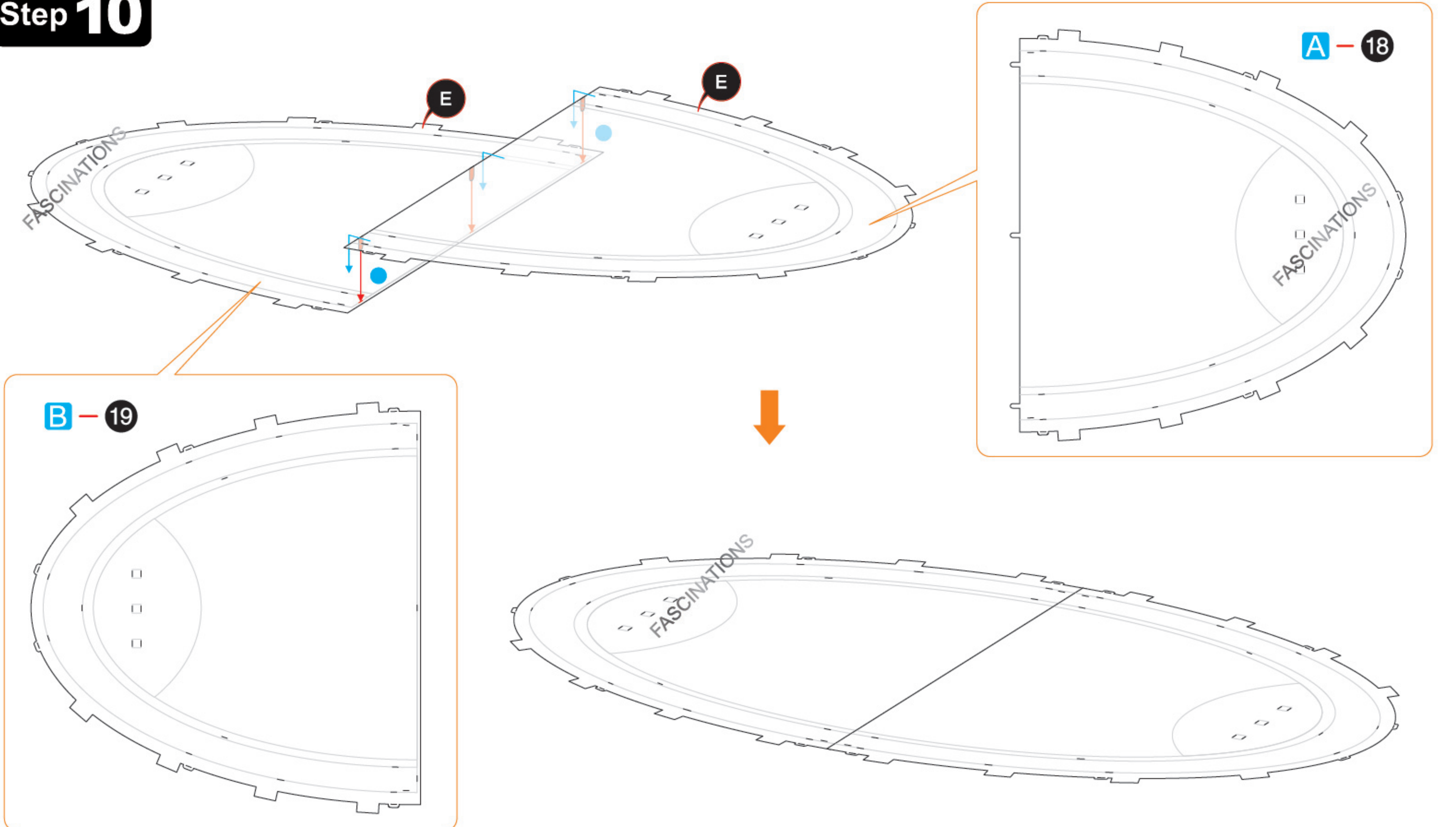
Step 8



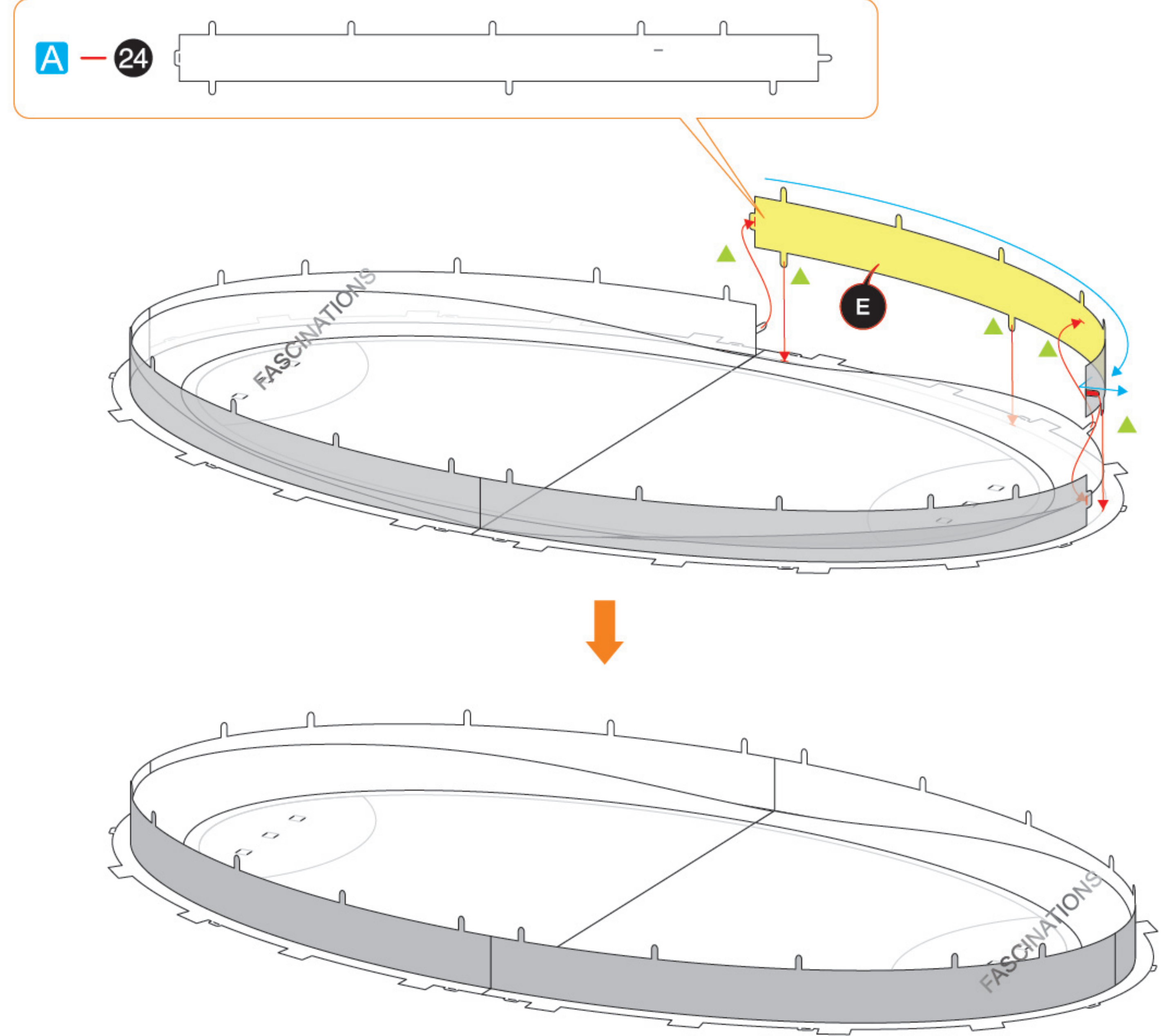
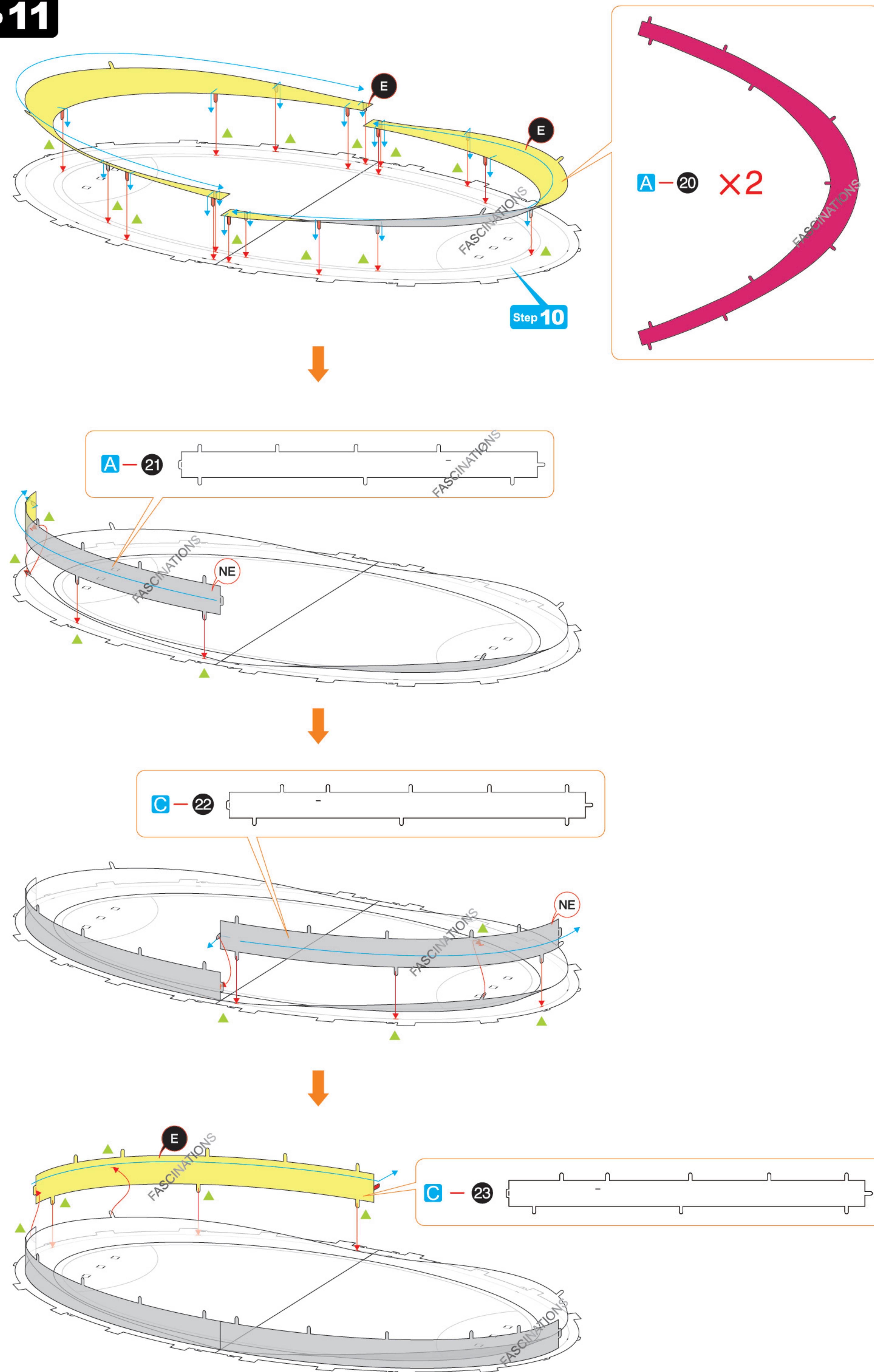
Step 9



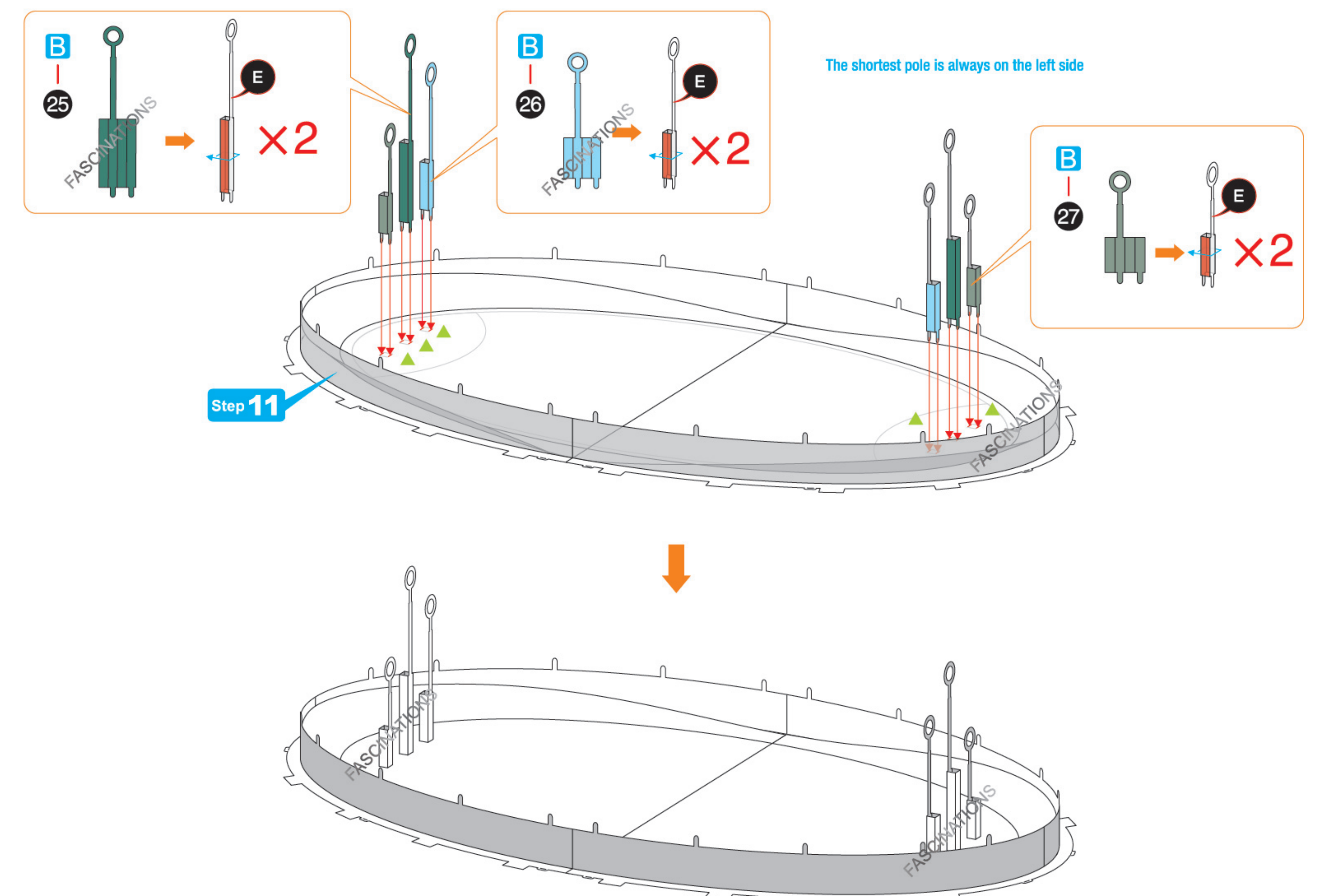
Step 10



Step 11



Step 12



Step 13

