

BUMBLEBEE
MMS470



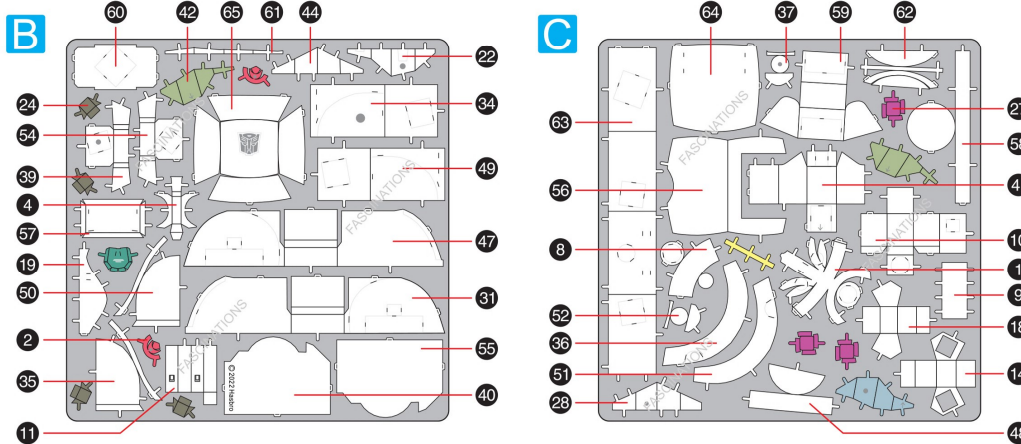
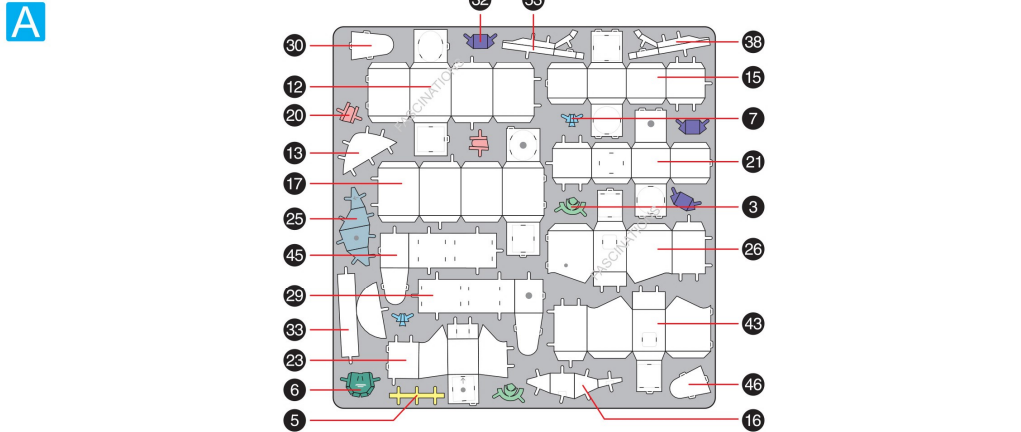
TRANSFORMERS and all related characters are trademarks of Hasbro and are used with permission. © 2022 Hasbro. All Rights Reserved. Licensed by Hasbro.



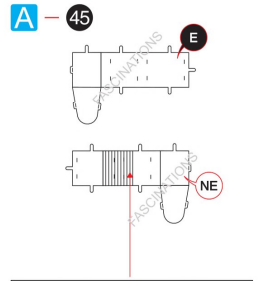
It is highly recommended that you visit www.metalearth.com/360/mms470 to see the completed model before assembling your own

METAL SHEETS

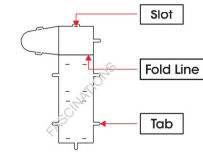
Parts with same color are duplicates



TO CREATE THE BEST CONNECTIONS



Consider these engraved stripes as supporting features for the bend



Legends:

- E** Engraved/ Color side
- NE** Non - engraved/ Silver side
- Attention point** (hand icon)
- Insert tab and bend 90 degrees
- ▲** Insert tab and twist 90 degrees

Recommended tools:

- Wire cutters: helpful for taking parts from the metal sheets.
- Tweezers or needle nose pliers: helpful for folding parts, bending and twisting tabs.

Assembly tip:

If needed, slightly twist tabs to hold parts together then untwist and bend them down for a nice finish.

Warning: In order to avoid possible injury from sharp edges, please carefully discard the metal sheets after parts have been removed.

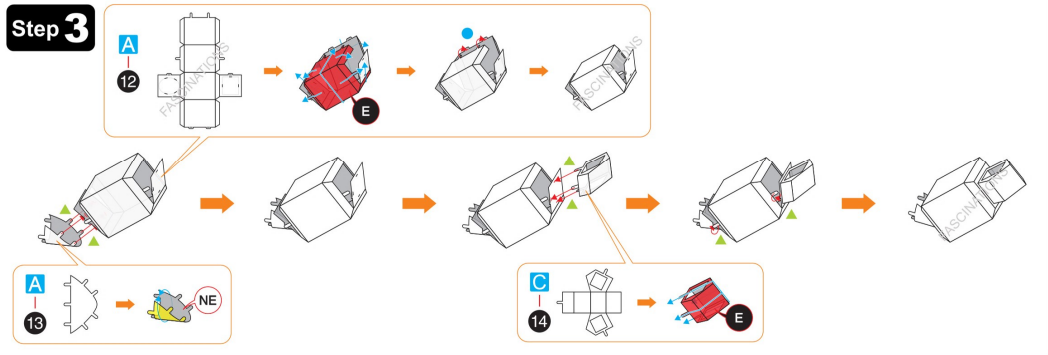
ASSEMBLY FLOW CHART

Step 1

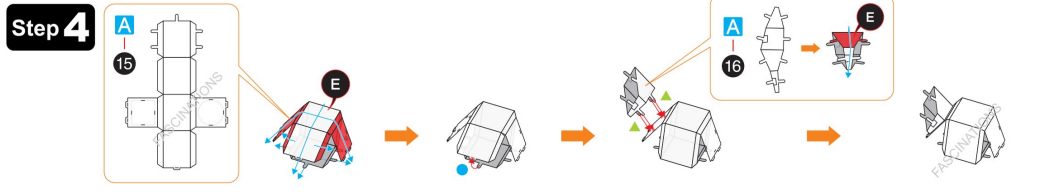
Connect the tabs illustrated in red first

Step 2

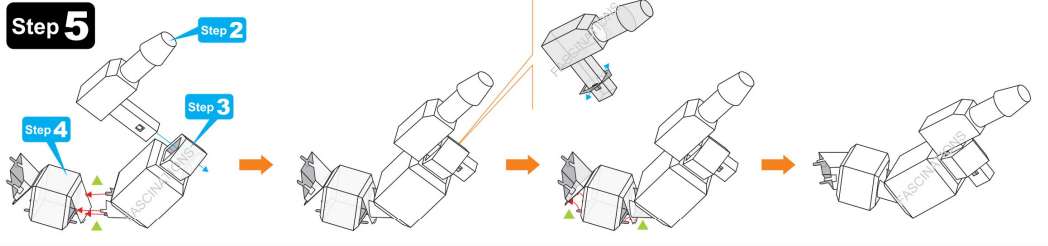
Step 3



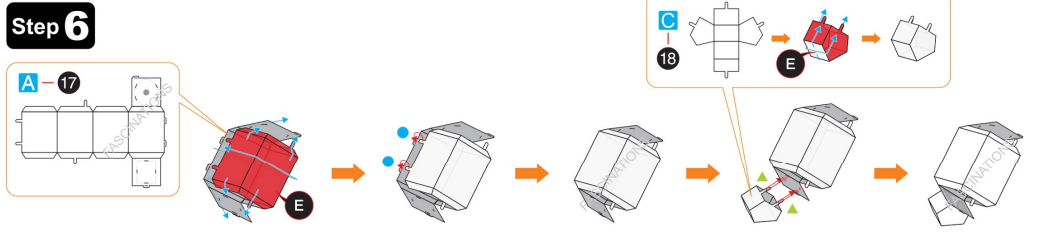
Step 4



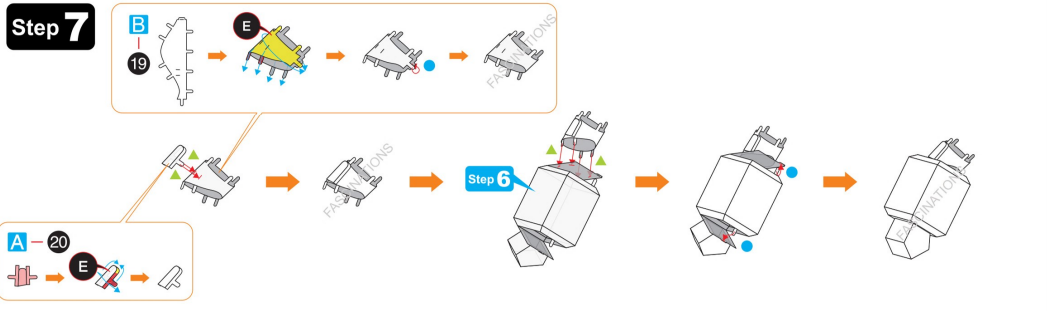
Step 5



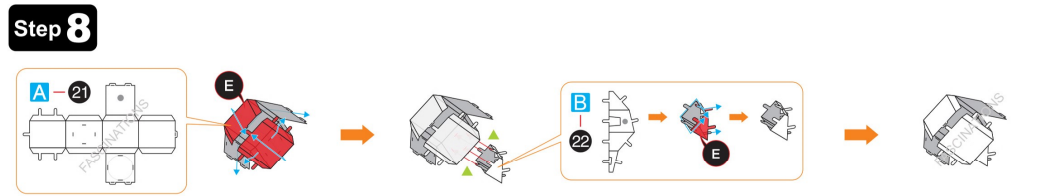
Step 6



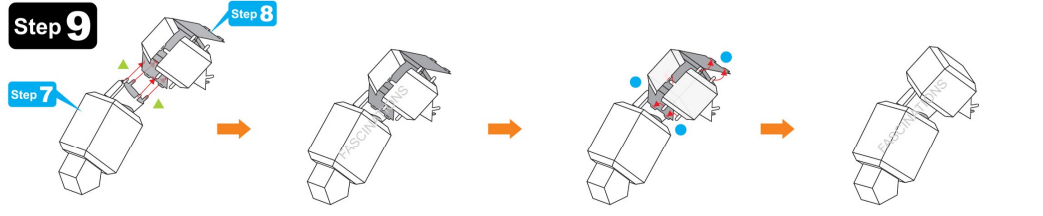
Step 7



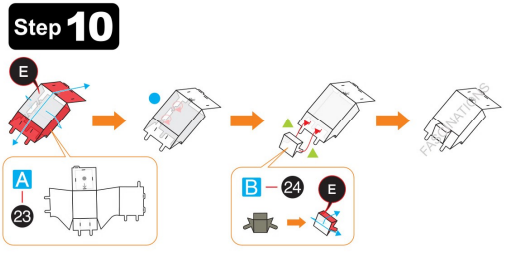
Step 8



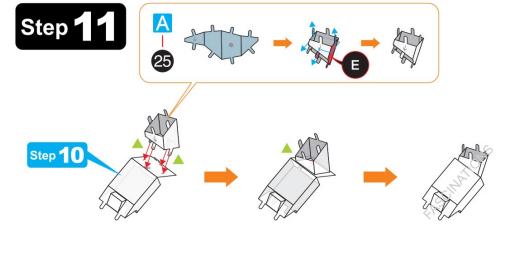
Step 9



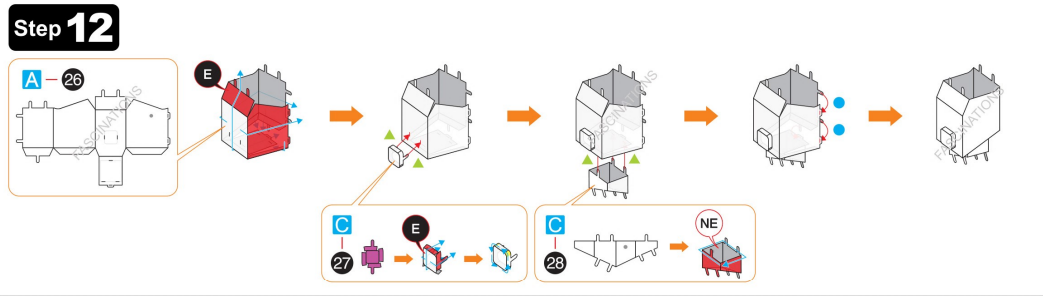
Step 10



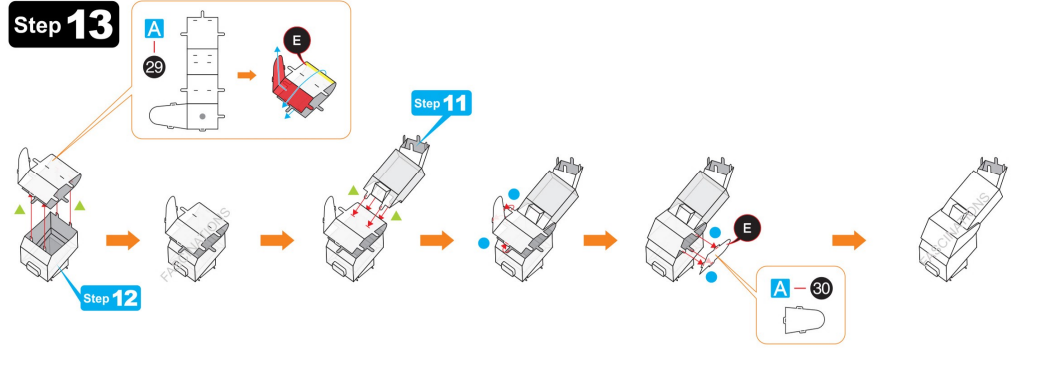
Step 11



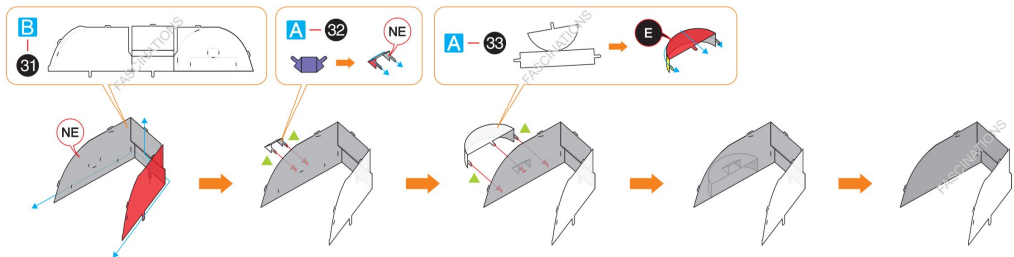
Step 12



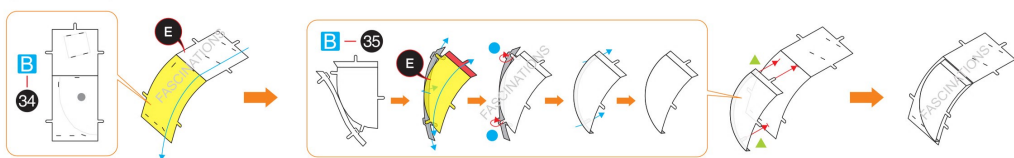
Step 13



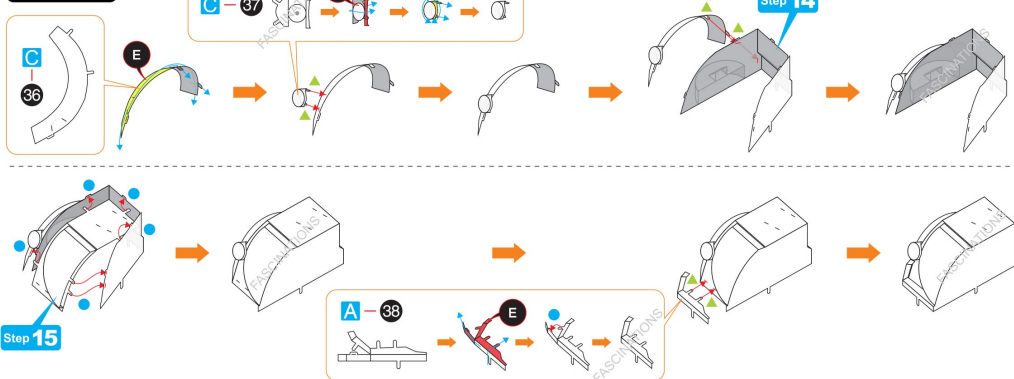
Step 14



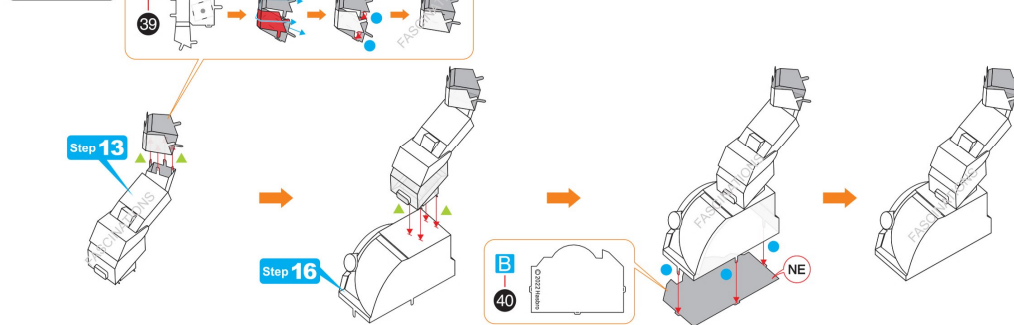
Step 15



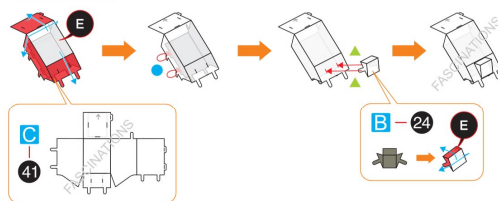
Step 16



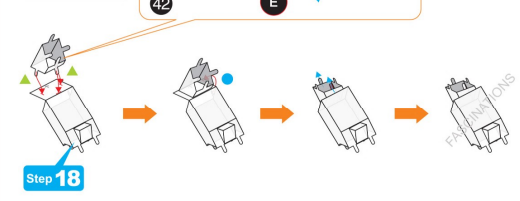
Step 17



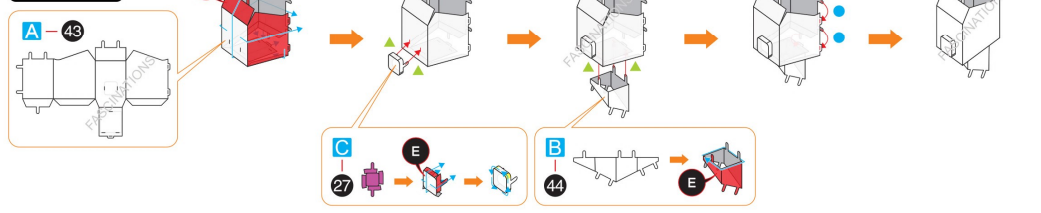
Step 18



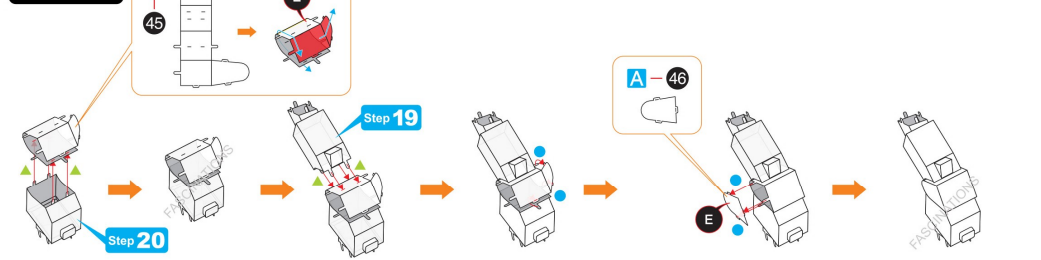
Step 19



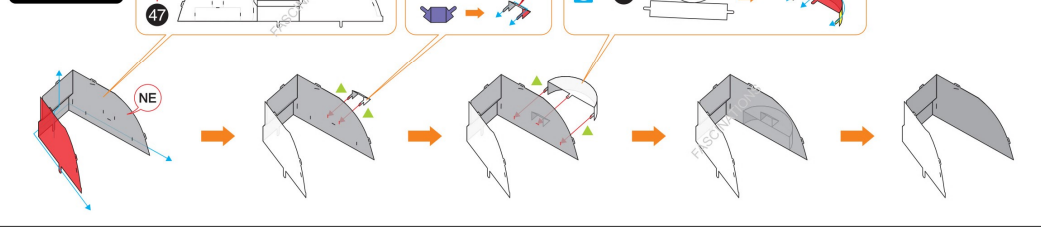
Step 20



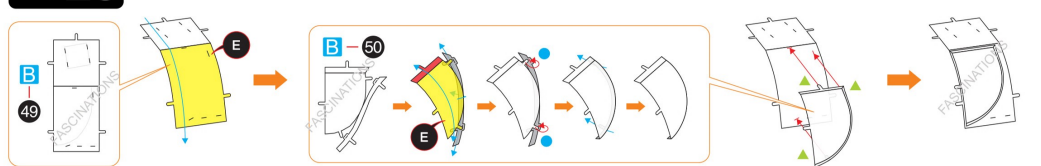
Step 21



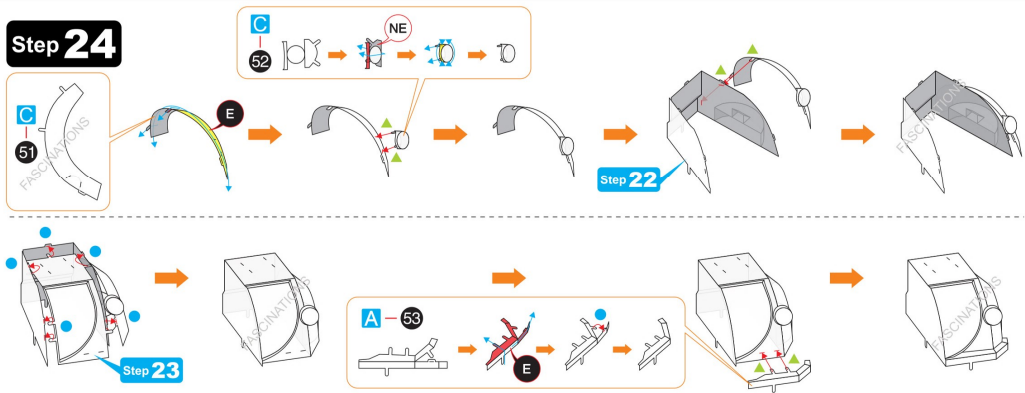
Step 22



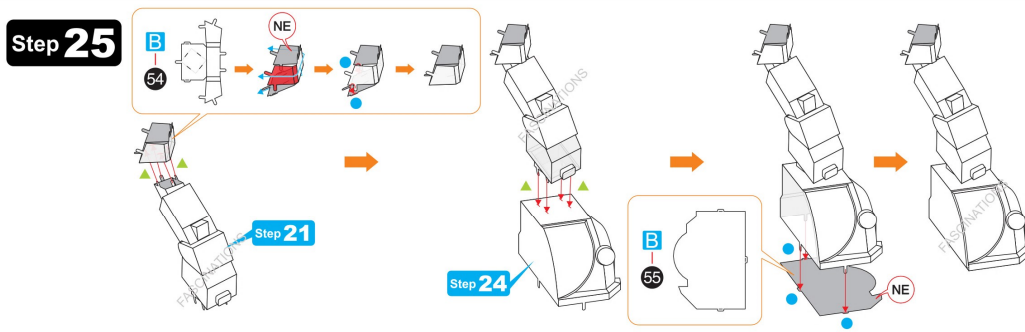
Step 23



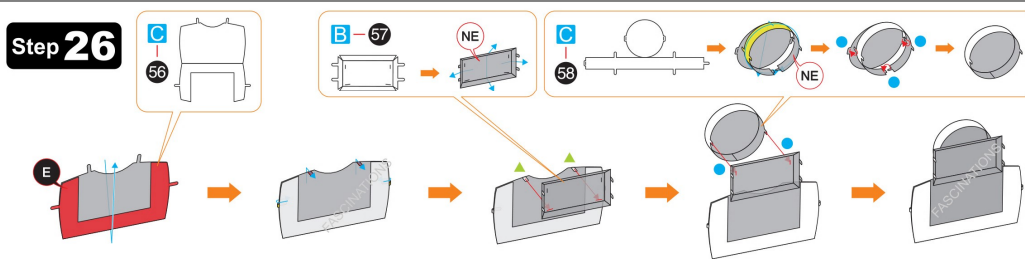
Step 24



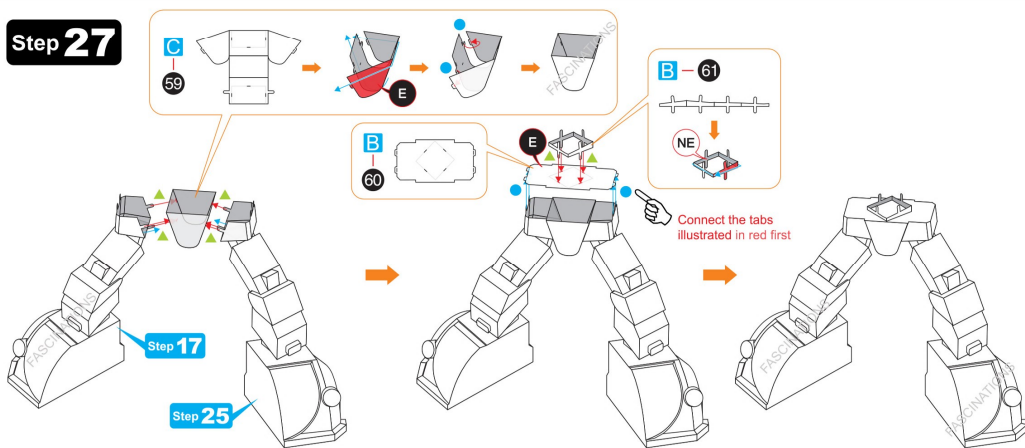
Step 25



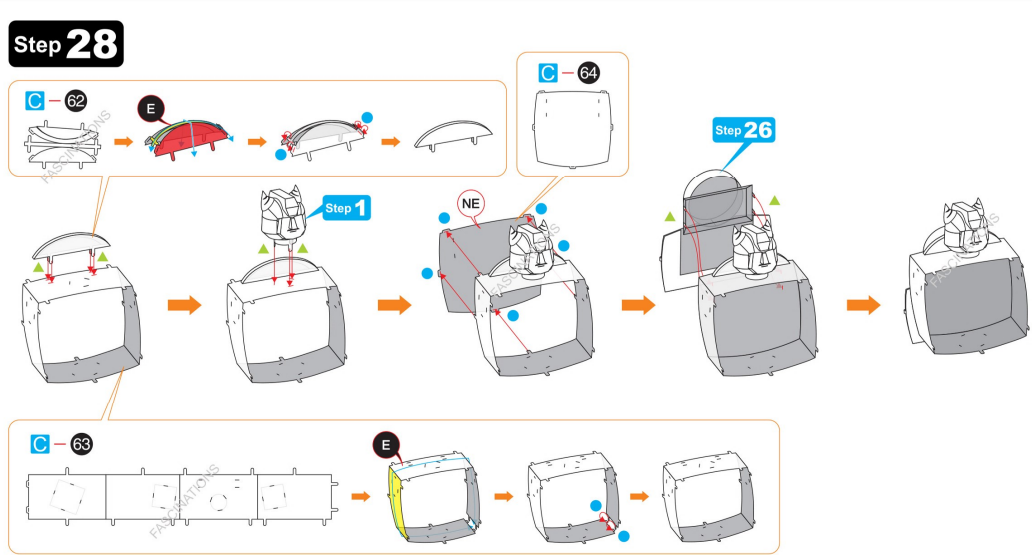
Step 26



Step 27



Step 28



Step 29

