

OPTIMUS PRIME
MMS469

Licensed by:



TRANSFORMERS and all related characters are trademarks of Hasbro and are used with permission. © 2022 Hasbro. All Rights Reserved. Licensed by Hasbro.

360°
view



It is highly recommended that you visit
www.metalearth.com/360/mms469
to see the completed model before assembling your own

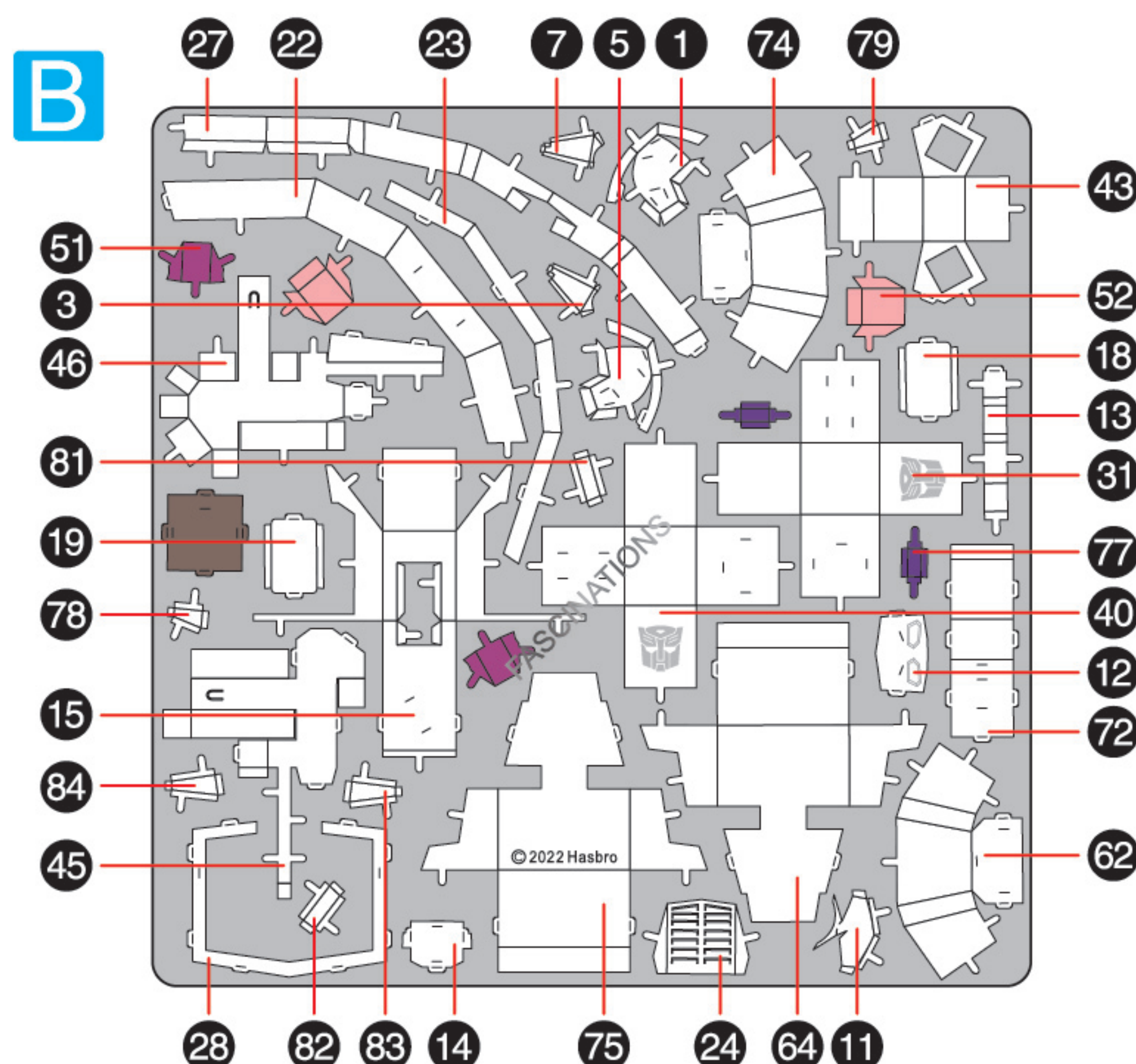
METAL SHEETS

Parts with same color are duplicates

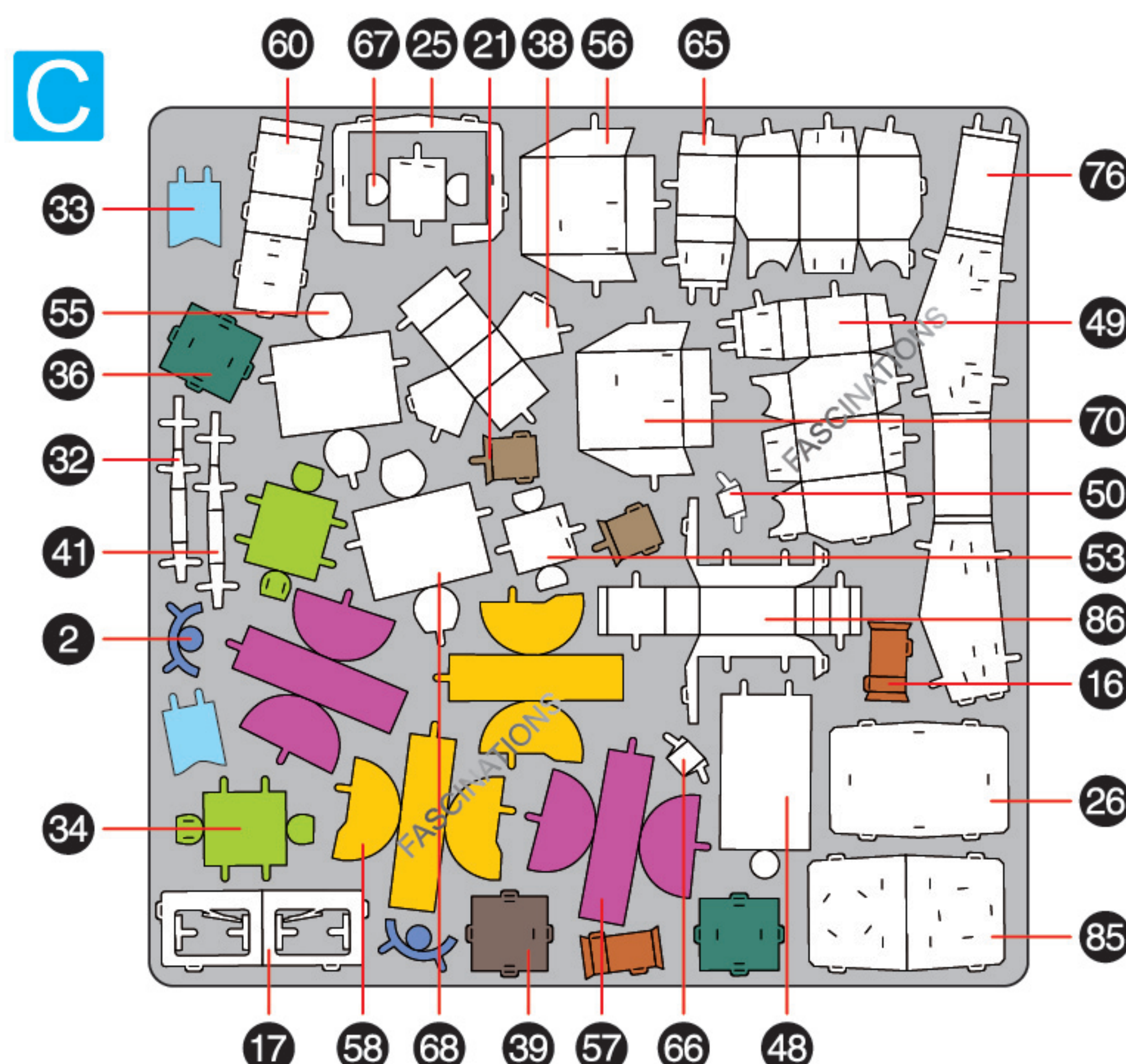
A



B



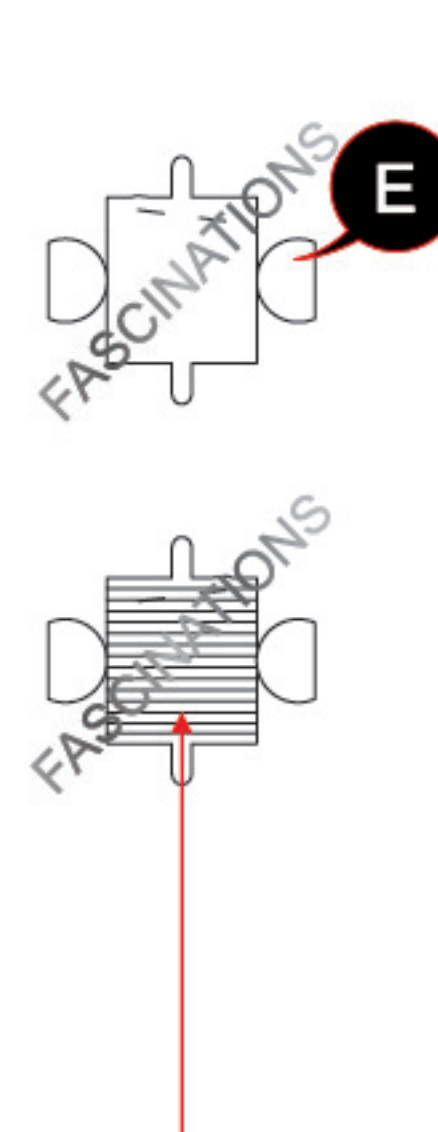
C



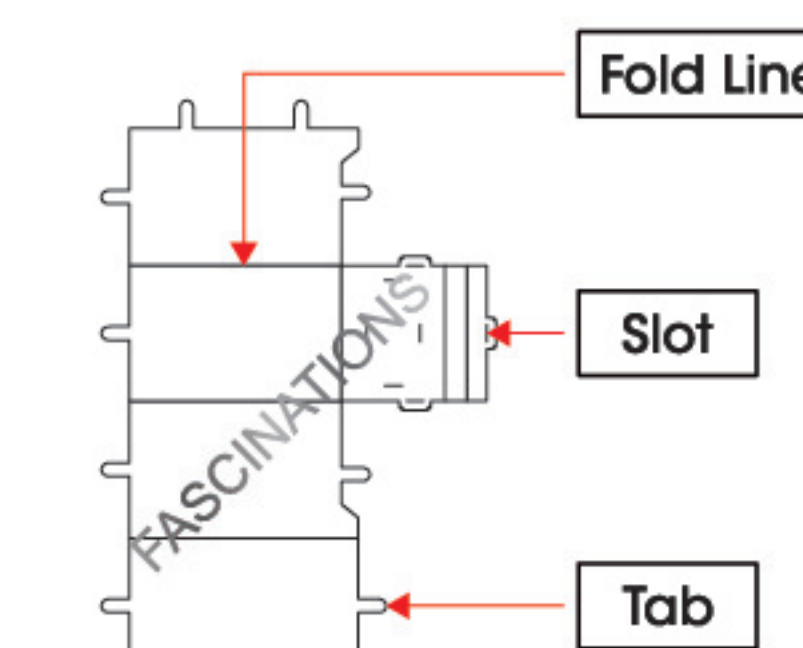
Go to www.metalearth.com/360/mms469 to see the zoomable PDF version of this instruction sheet

TO CREATE THE BEST CONNECTIONS

C-67



A-37



Consider these engraved stripes as supporting features for the bend

Legends:

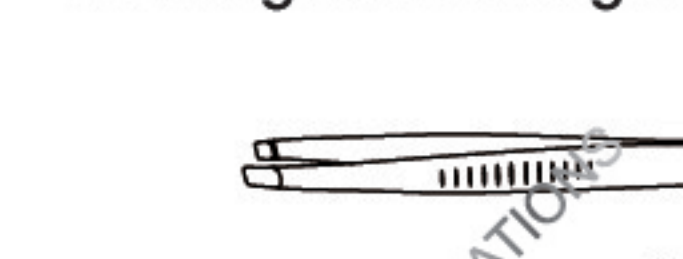
- E** Engraved / Color side
- NE** Non-engraved / Silver side
- Attention point
- Insert tab and bend 90 degrees
- Insert tab and twist 90 degrees

Recommended tools:

- Wire cutters: helpful for taking parts from the metal sheets.



- Tweezers or needle nose pliers: helpful for folding parts, bending and twisting tabs.



Assembly tip:

If needed, slightly twist tabs to hold parts together then untwist and bend them down for a nice finish.

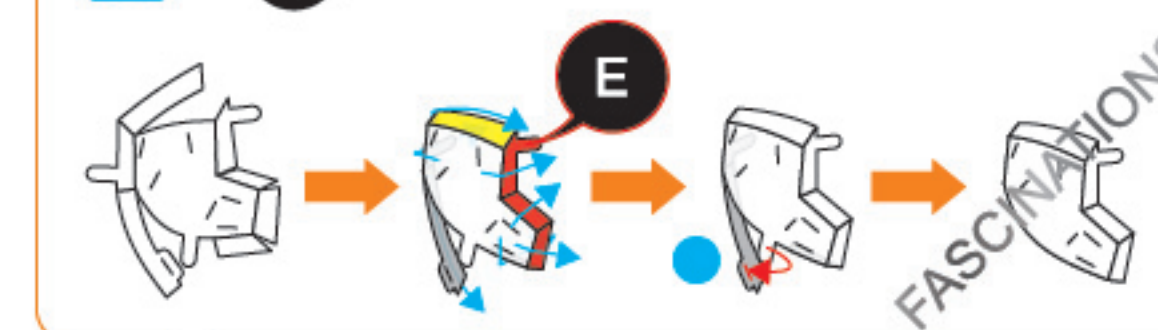


In order to avoid possible injury from sharp edges, please carefully discard the metal sheets after parts have been removed.

ASSEMBLY FLOW CHART

Step 1

B-1



C-2



B-3

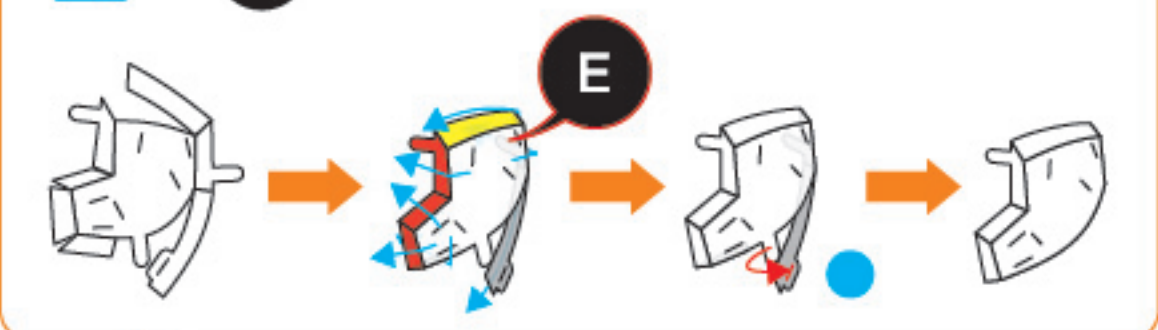


A-4



Step 2

B-5



C-2



A-6



B-7

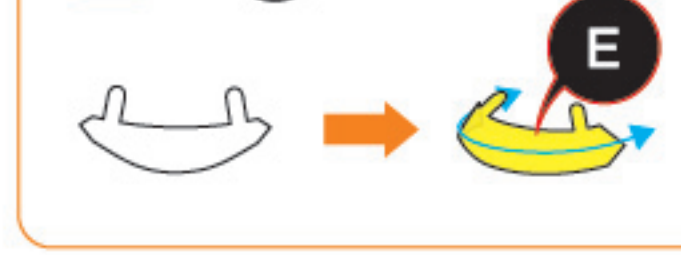


Step 3

A-8



A-9



A-10



B-11



B-12



Connect the tabs illustrated in red first

Step 4

Step 1



Step 2



B-13

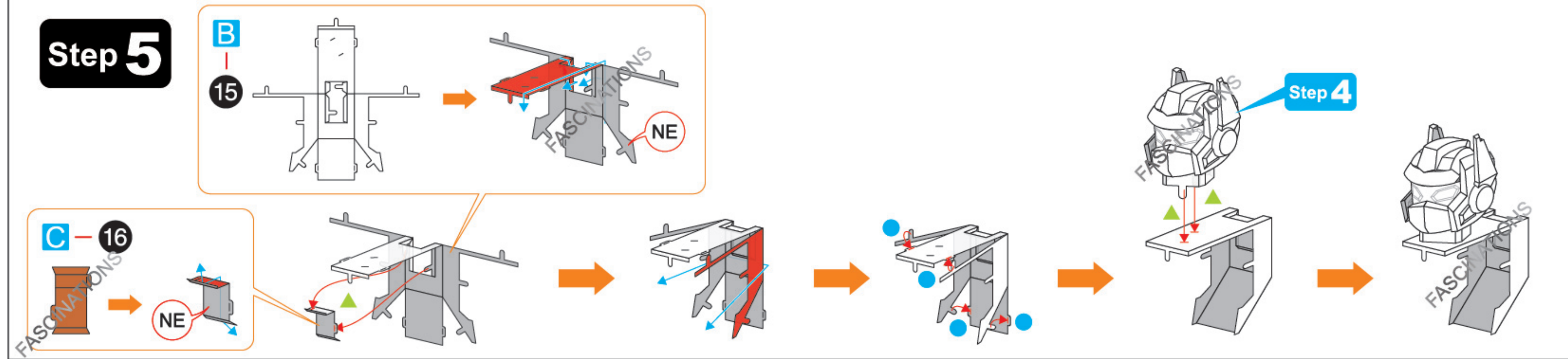


B-14

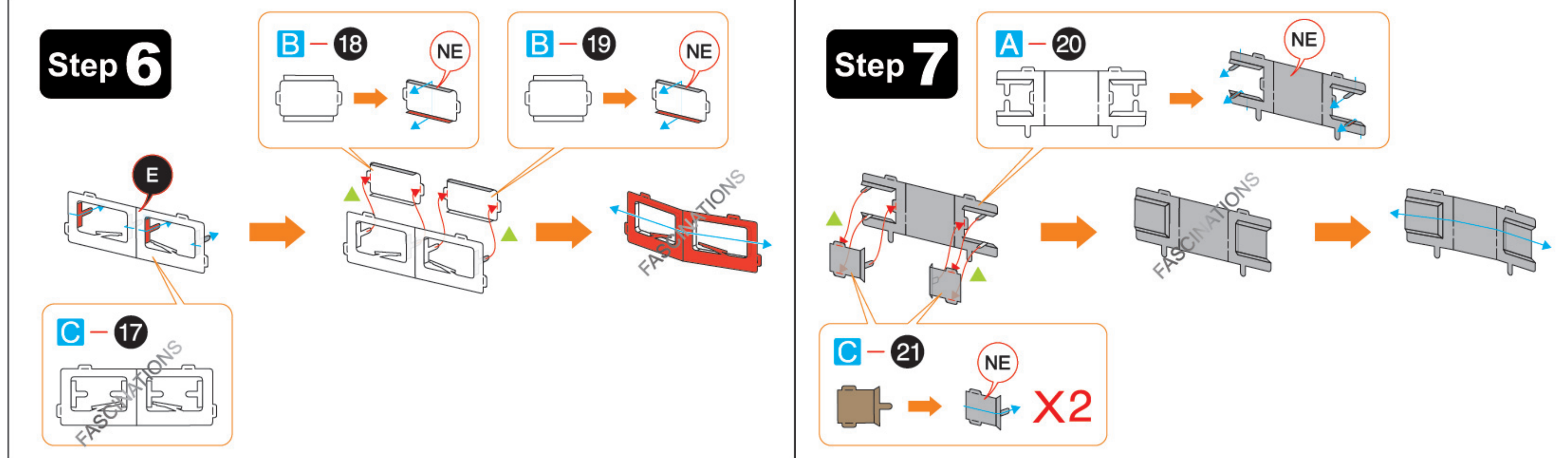


Connect the tabs illustrated in red first

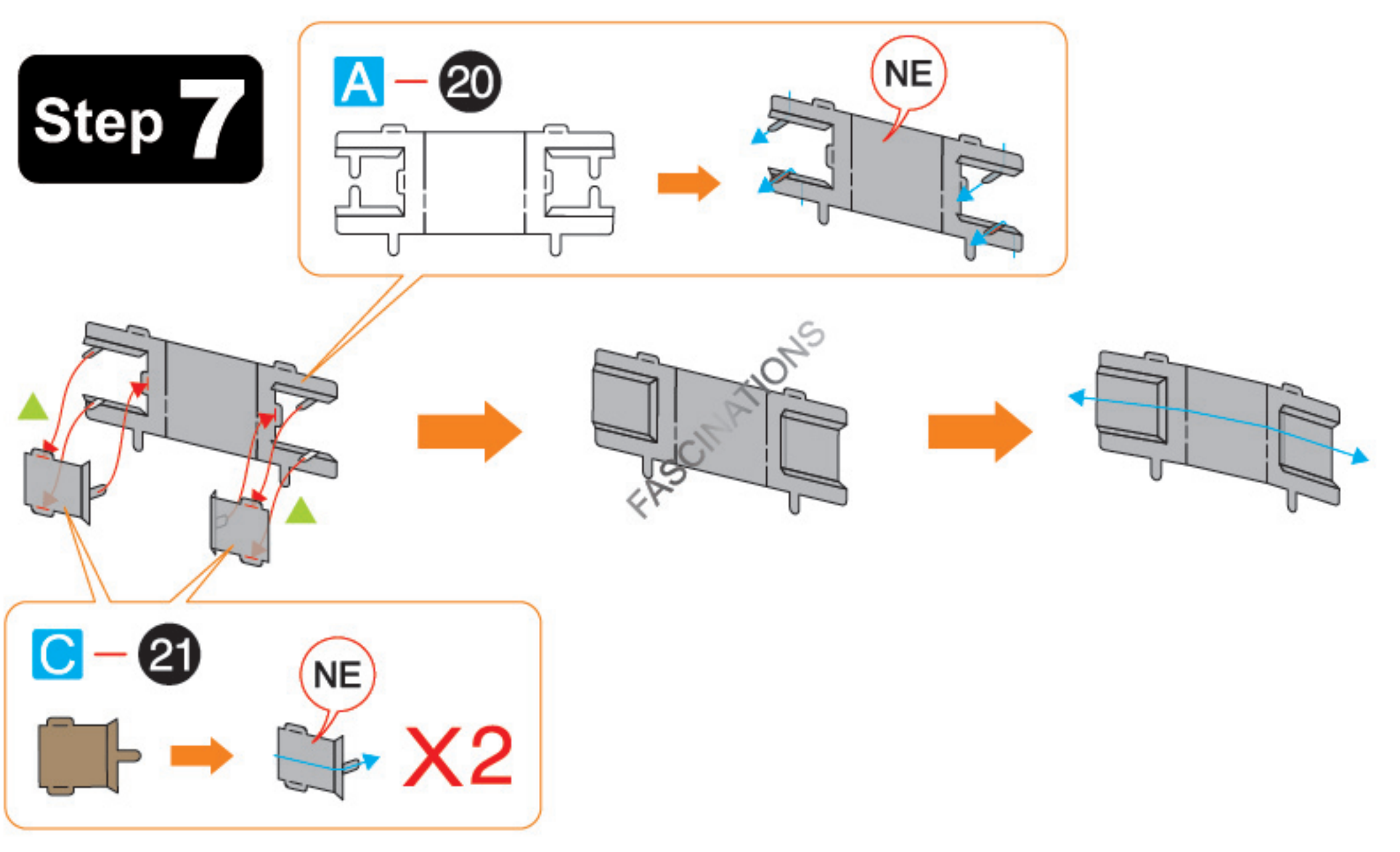
Step 5



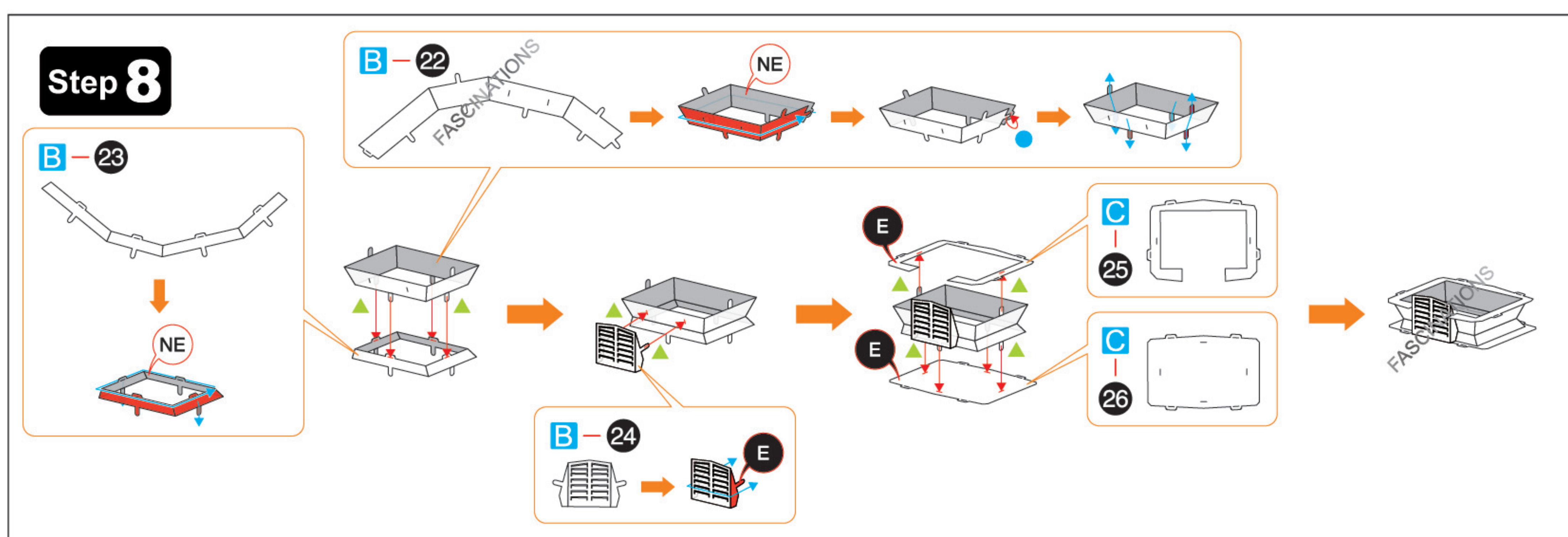
Step 6



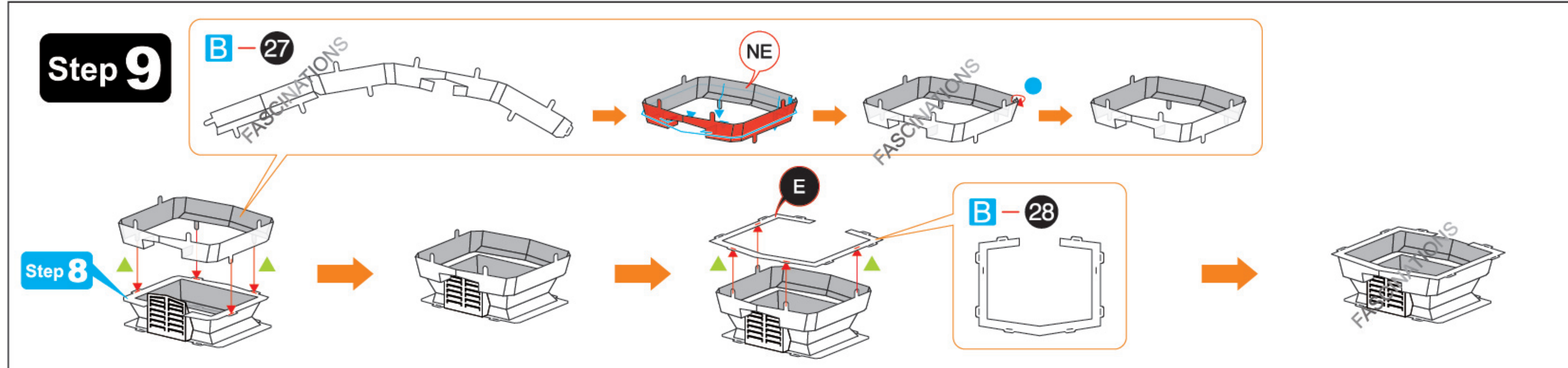
Step 7



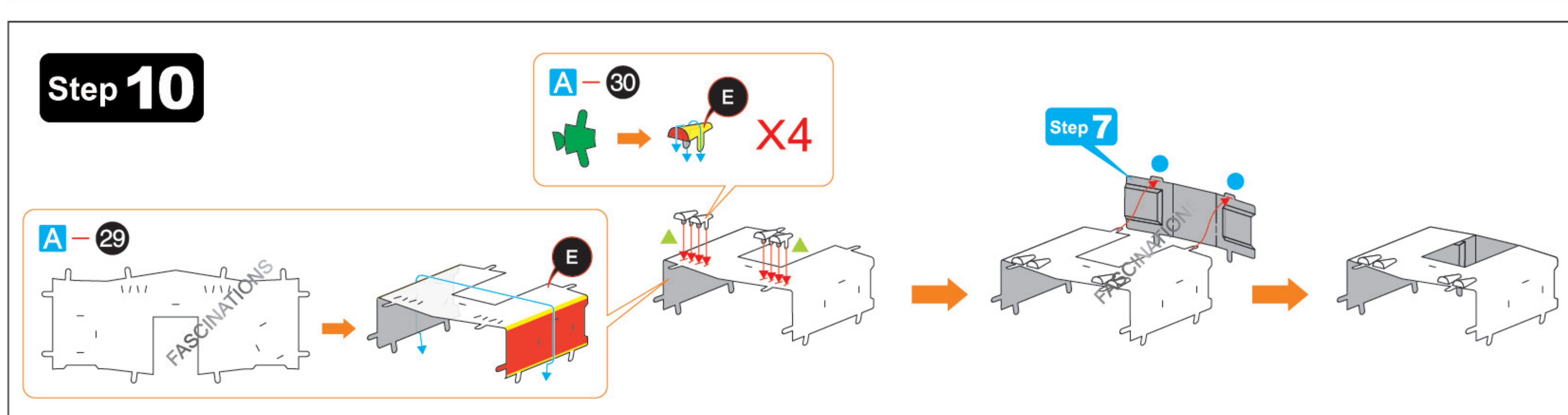
Step 8



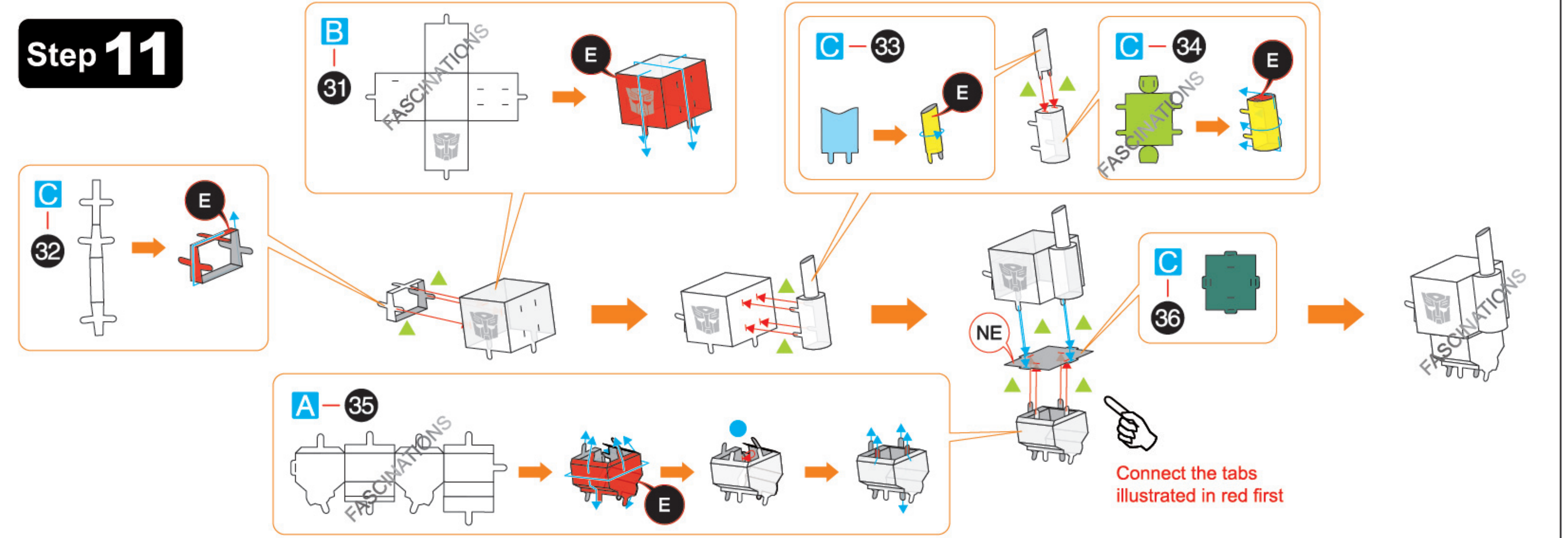
Step 9



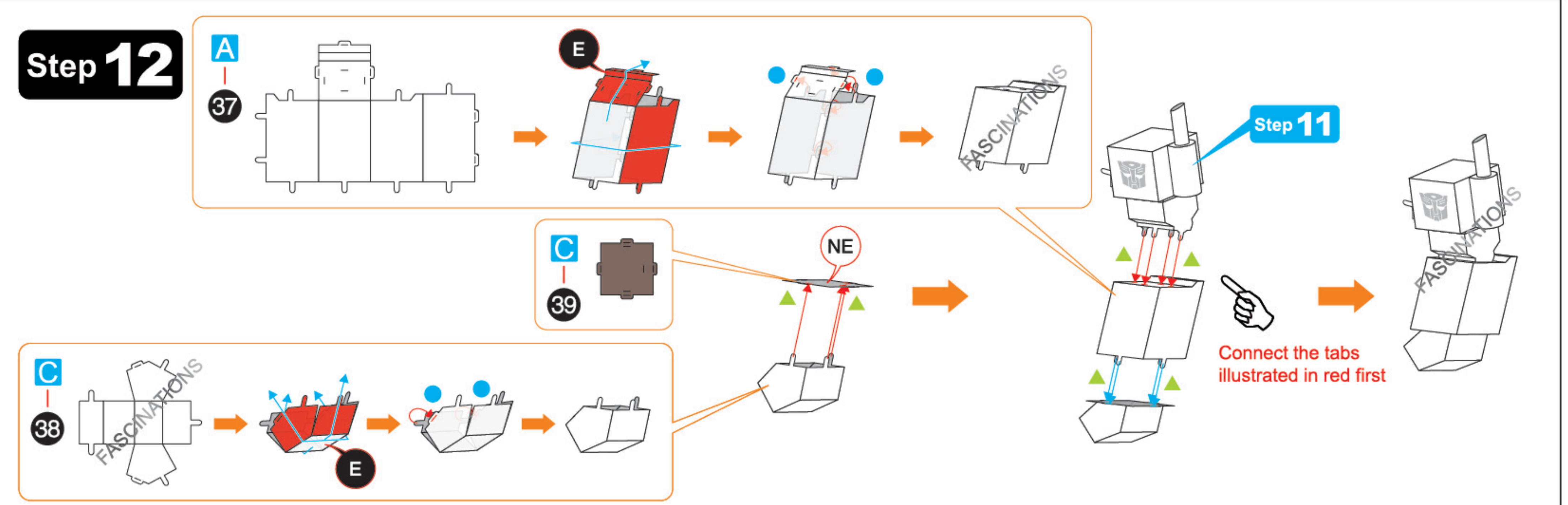
Step 10



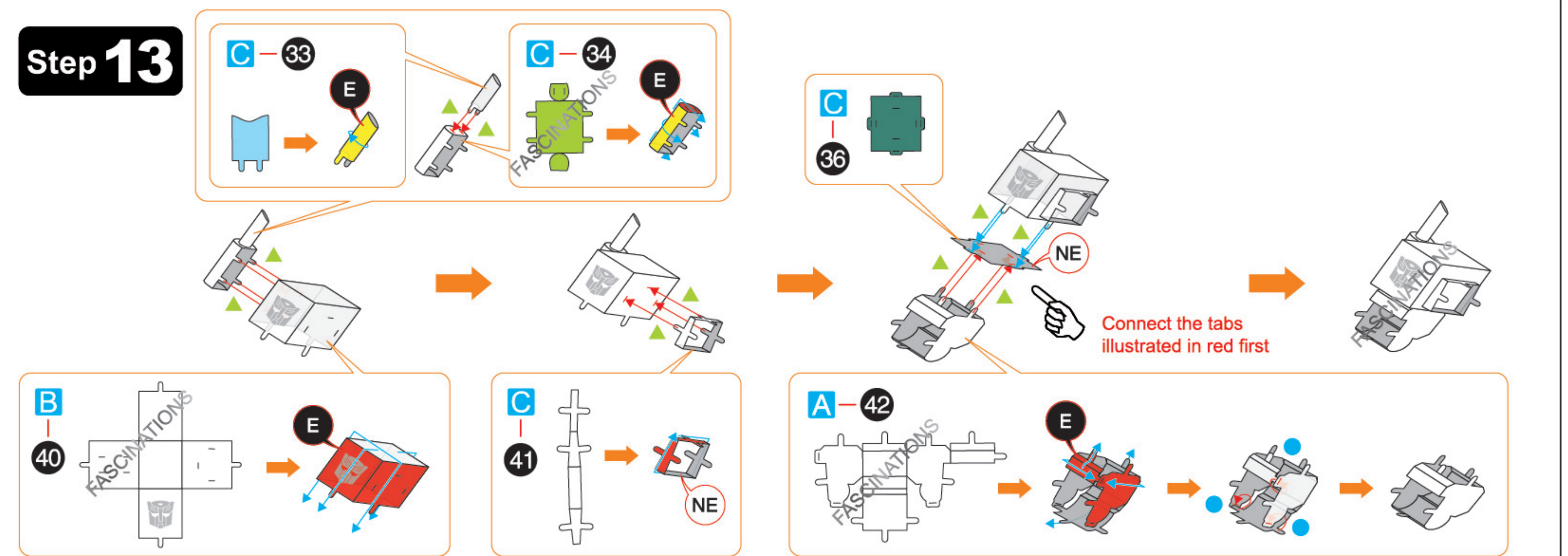
Step 11



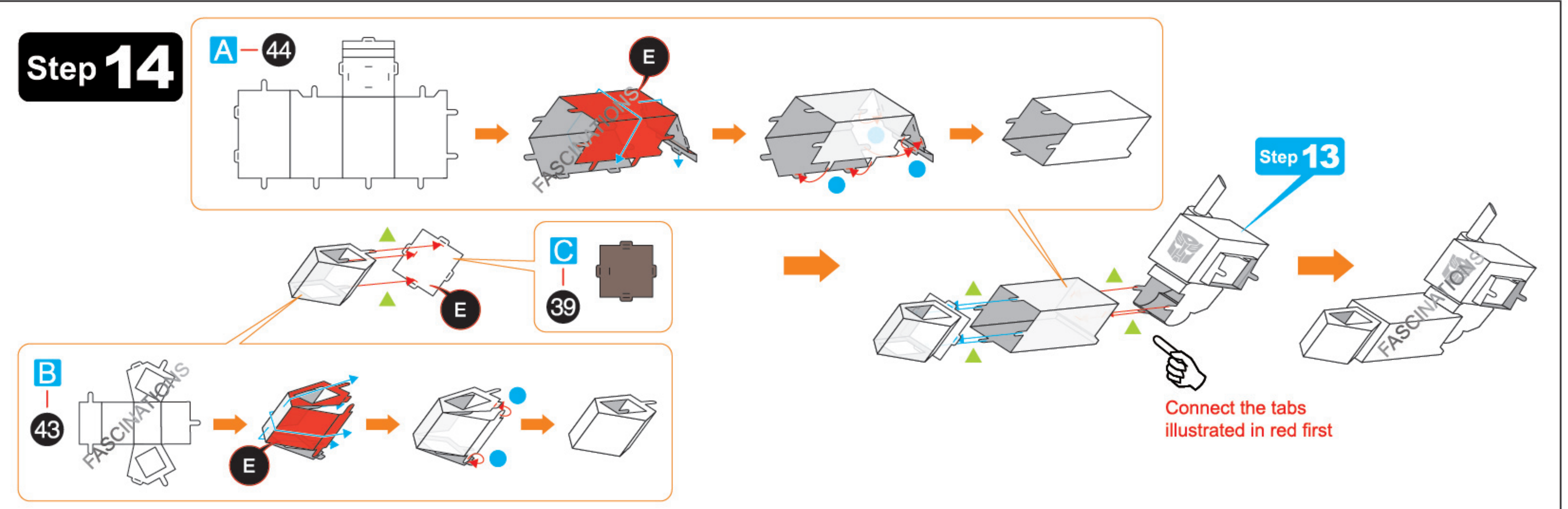
Step 12

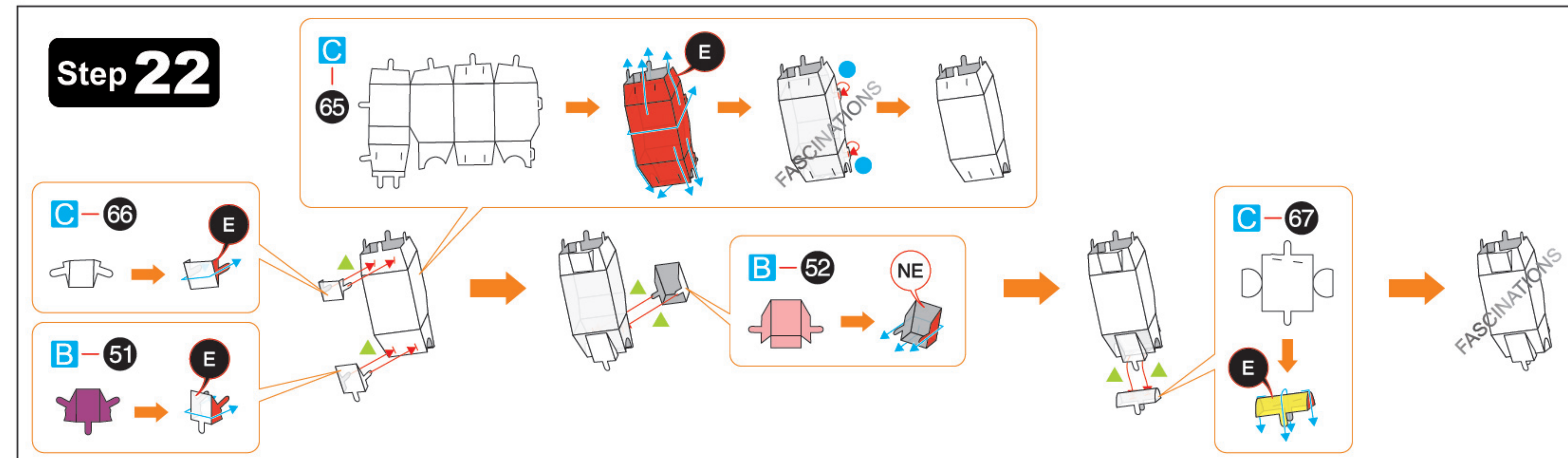
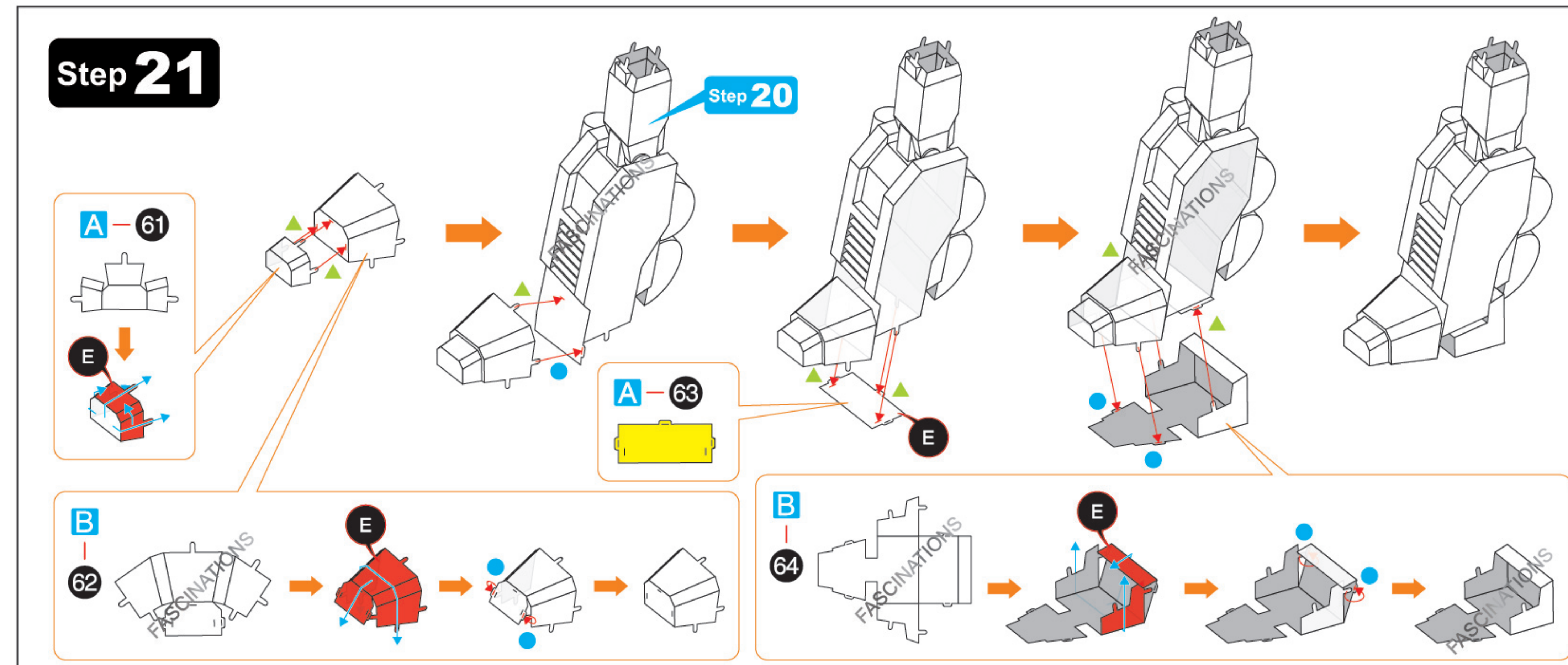
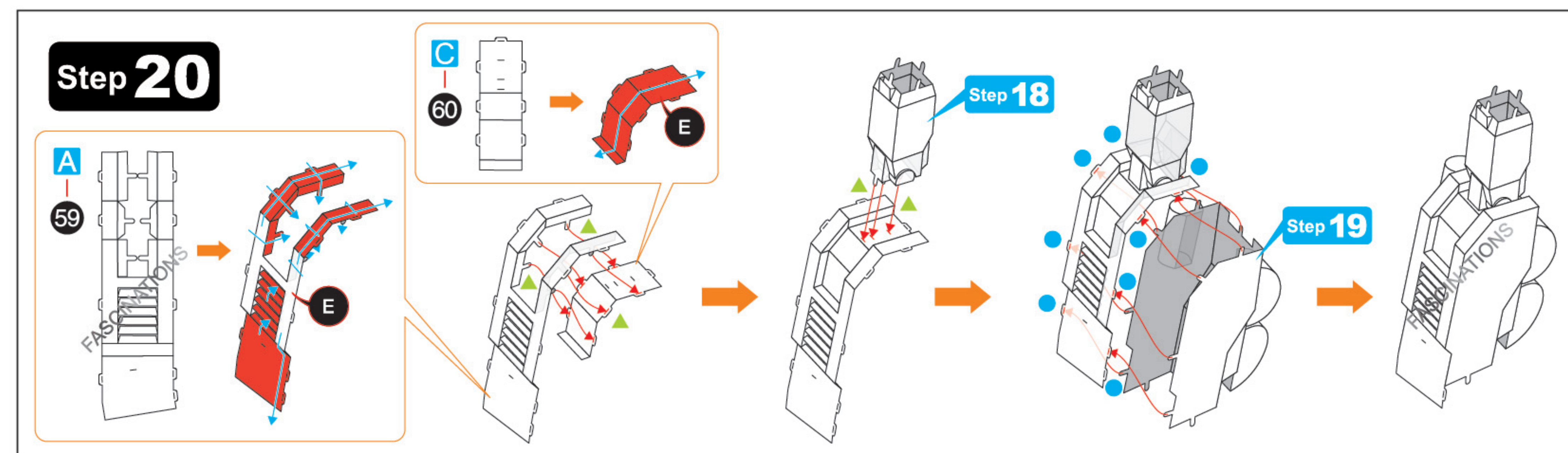
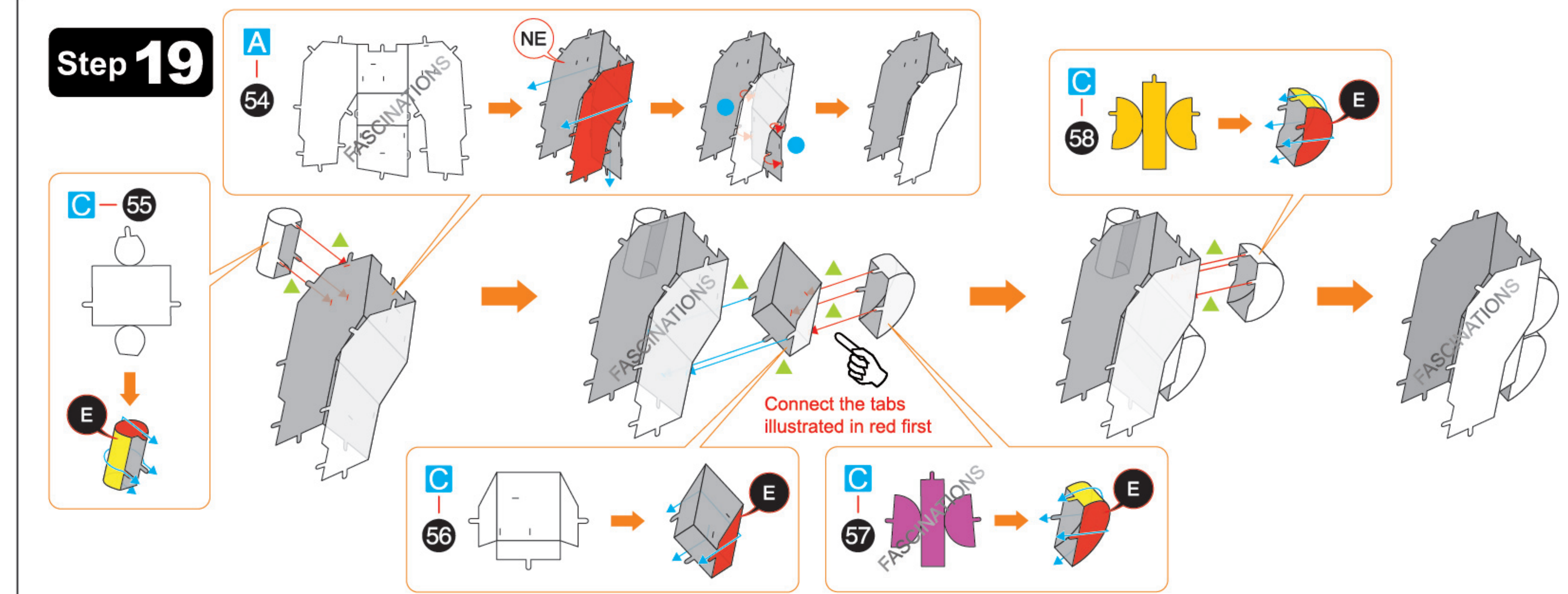
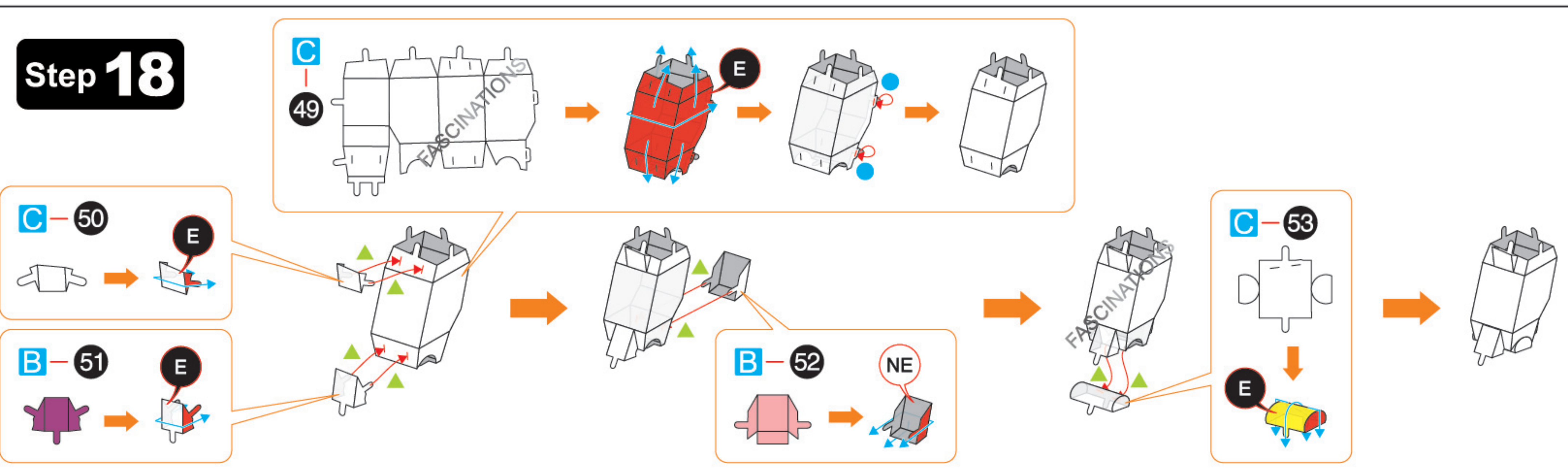
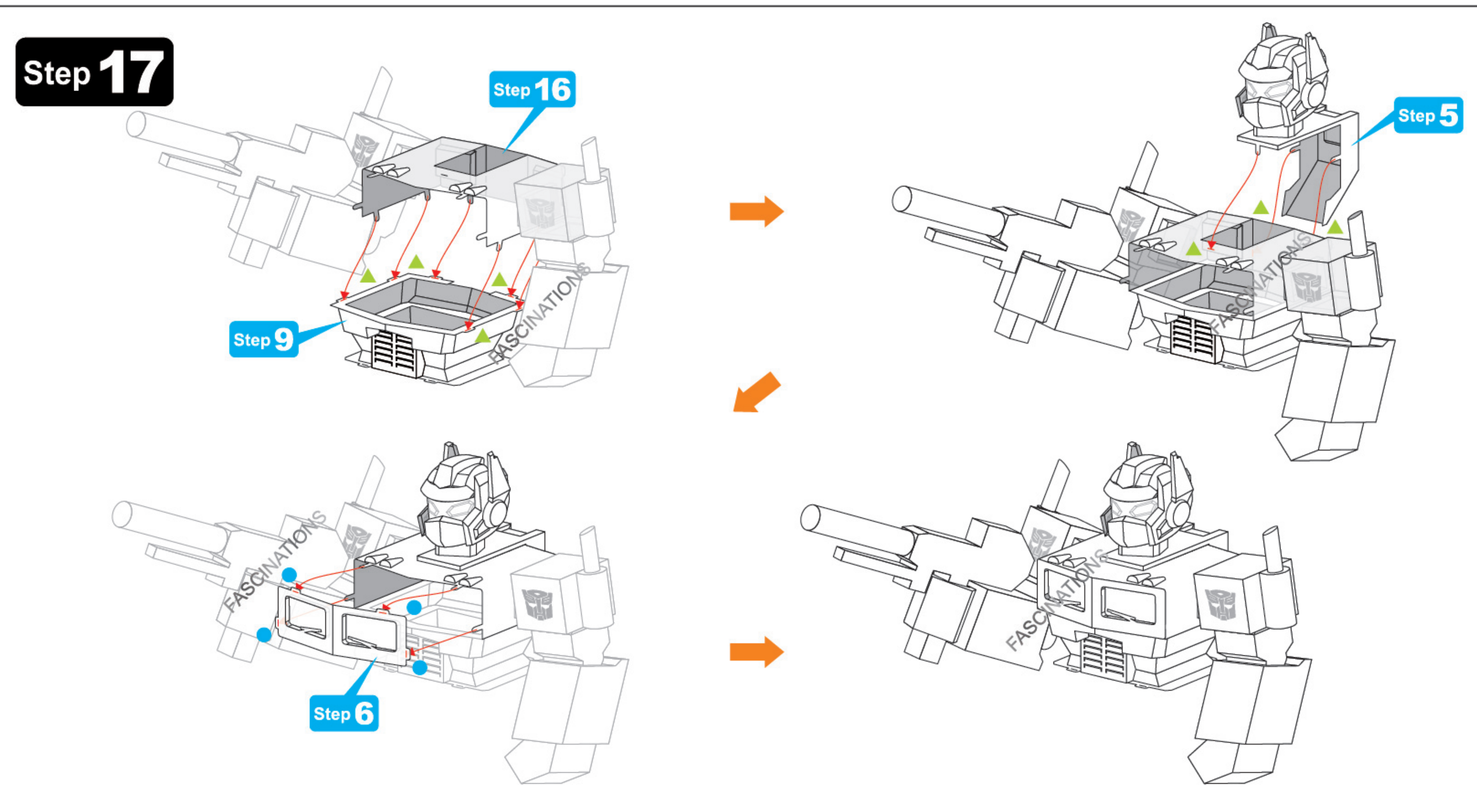
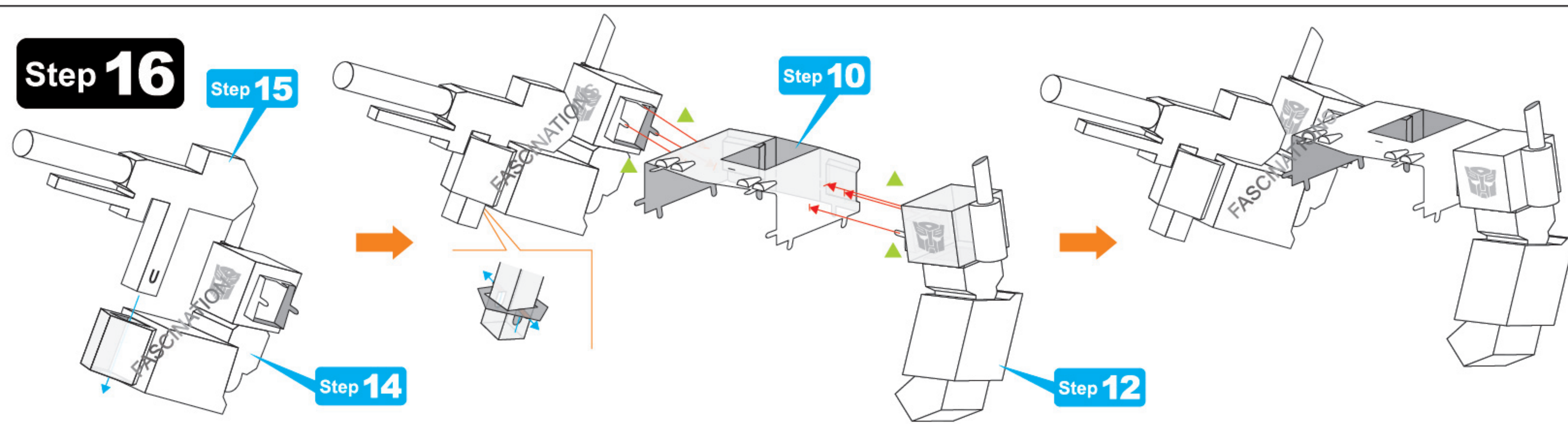
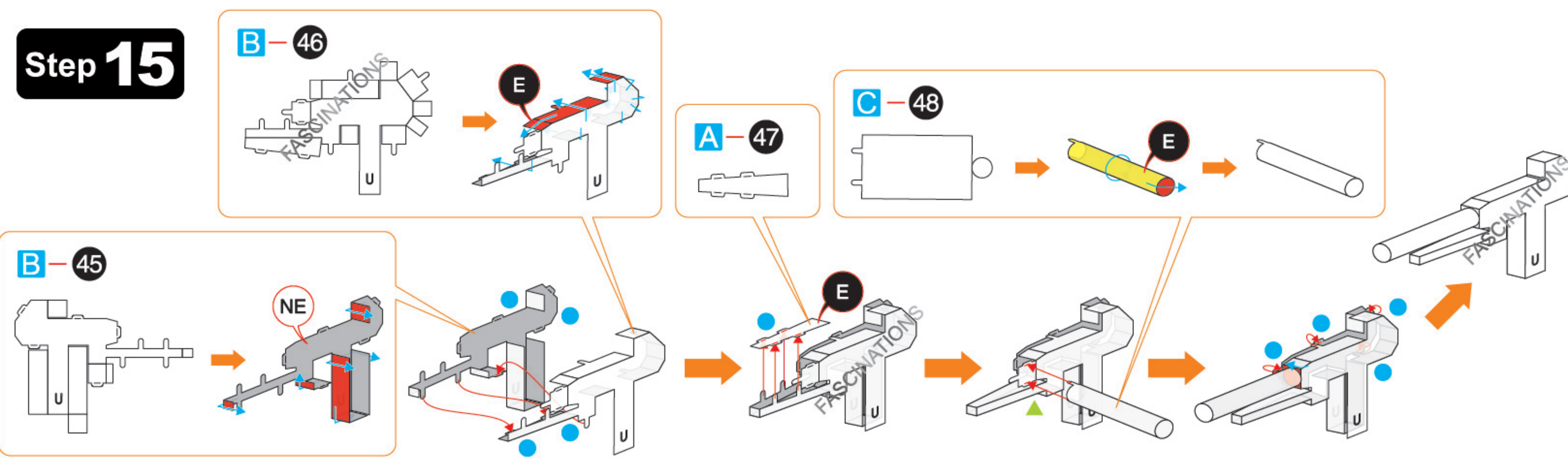


Step 13

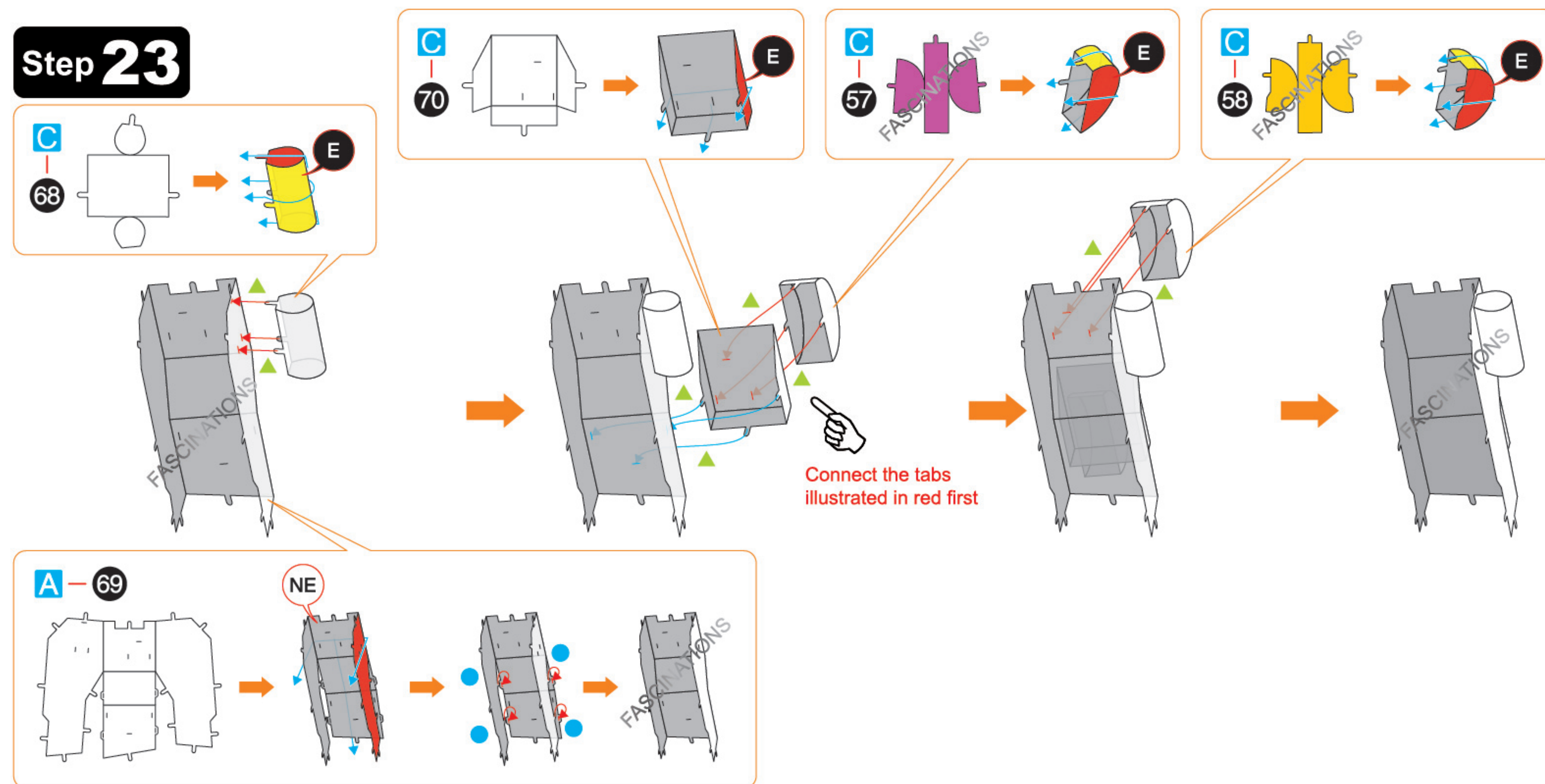


Step 14

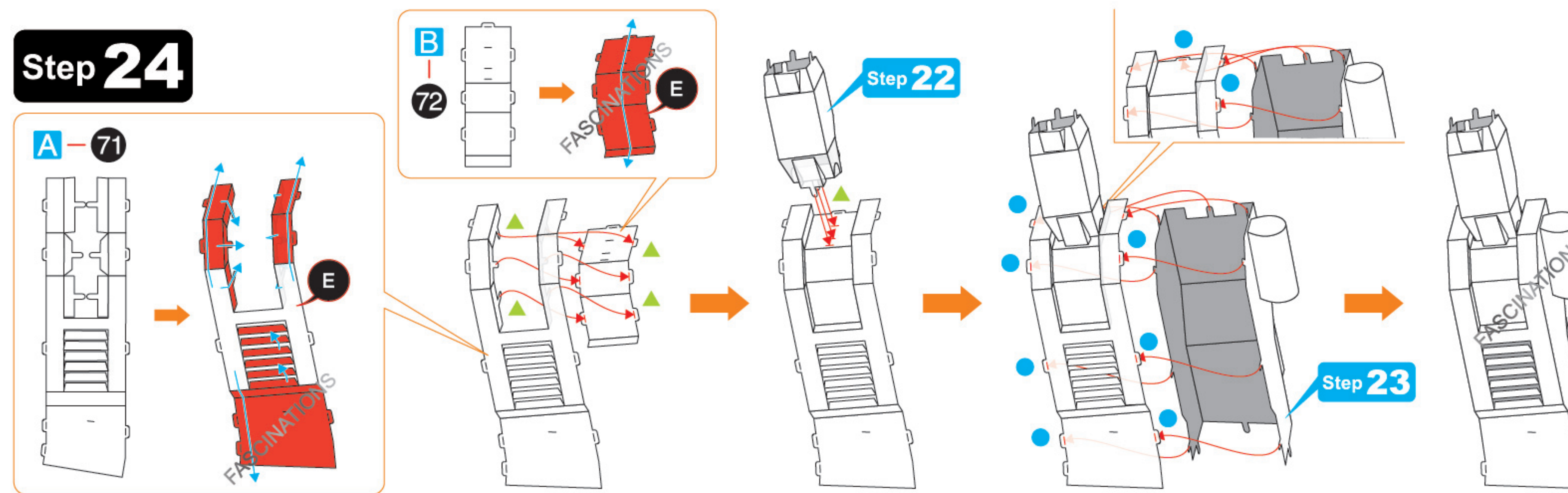




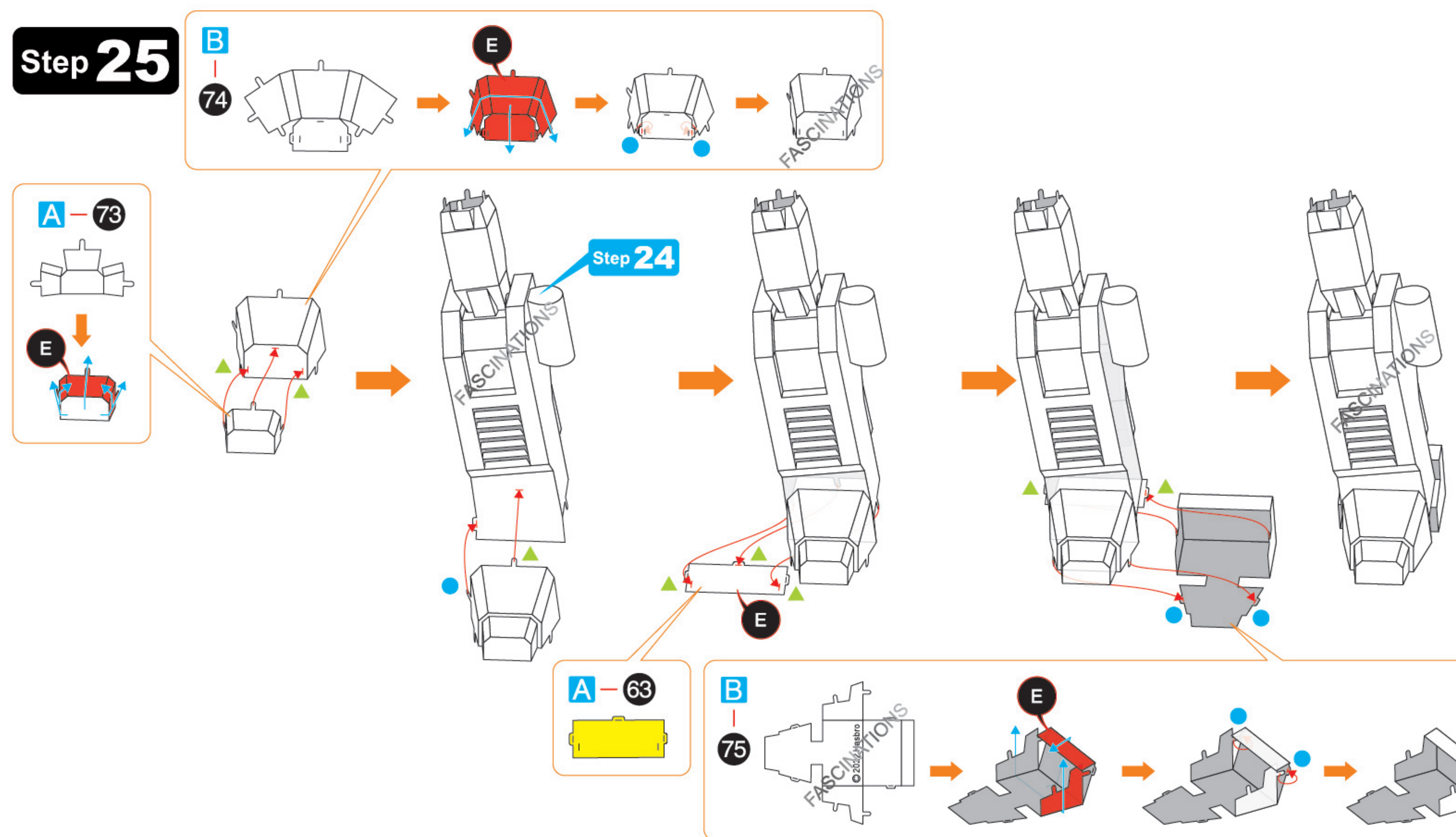
Step 23



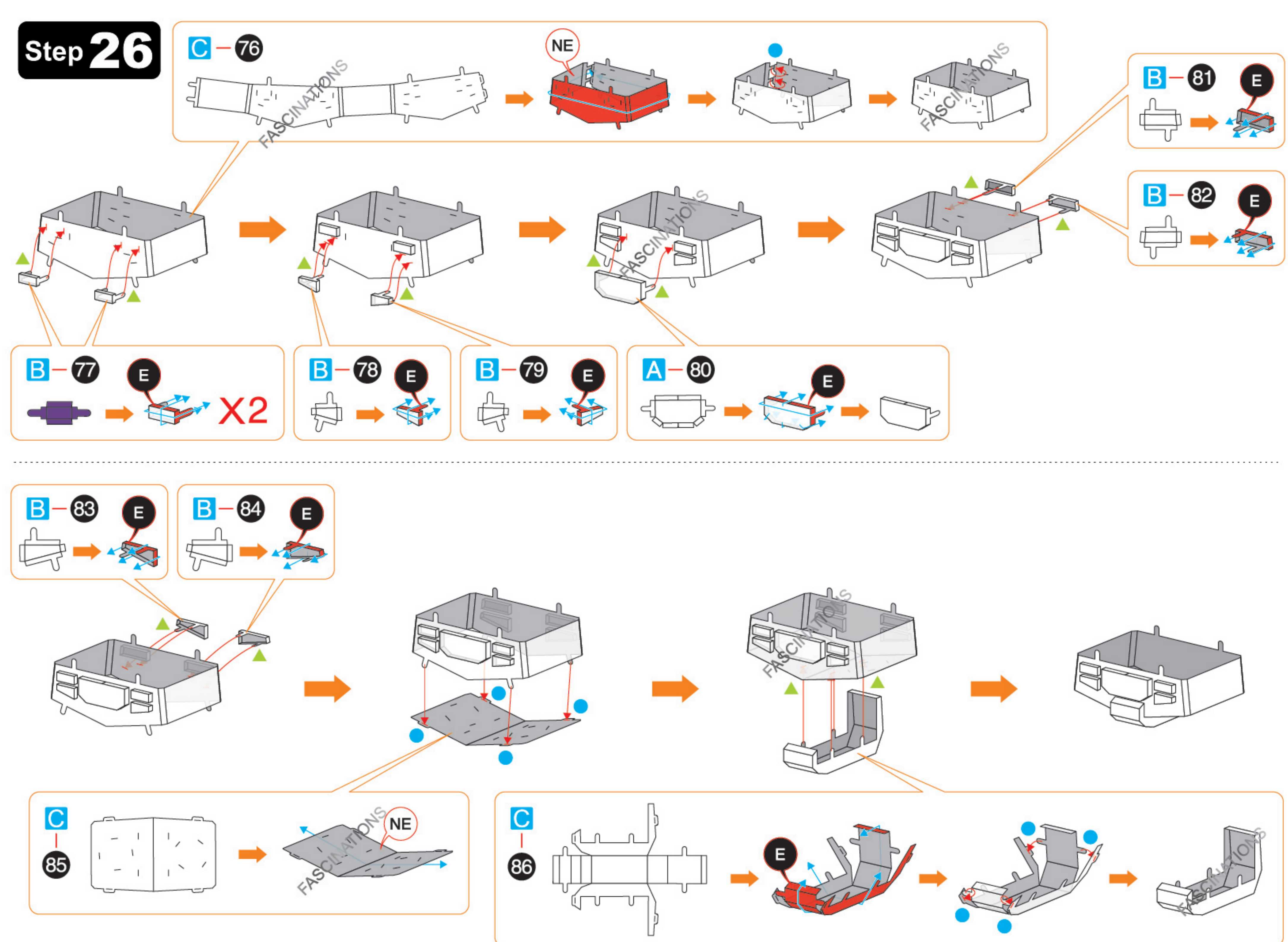
Step 24



Step 25



Step 26



Step 27

