

STARSCREAM
MMS472

Licensed by:



TRANSFORMERS and all related characters are trademarks of Hasbro and are used with permission. © 2022 Hasbro. All Rights Reserved. Licensed by Hasbro.

360°
view

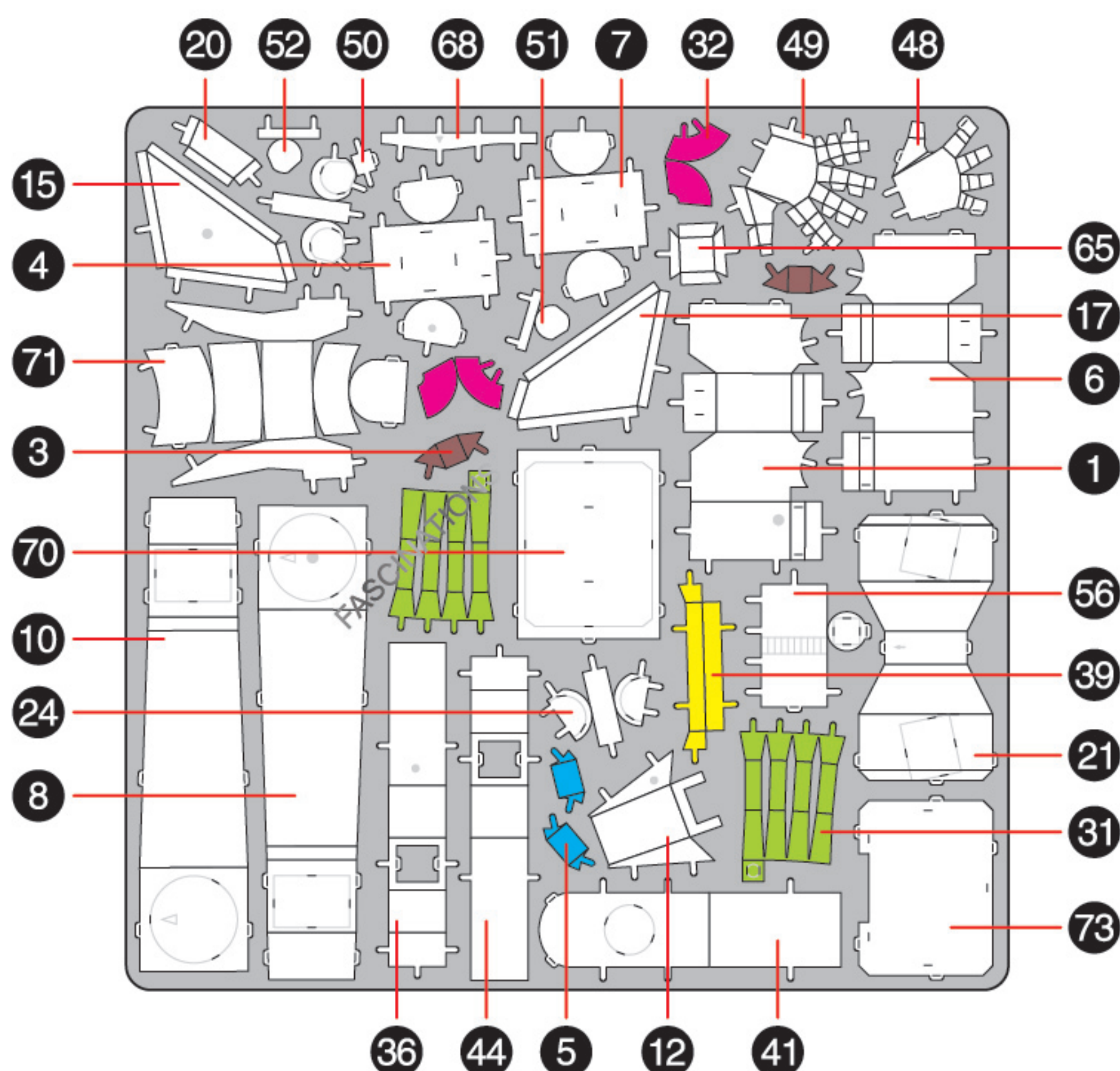


It is highly recommended that you visit
www.metalearth.com/360/mms472
to see the completed model before assembling your own

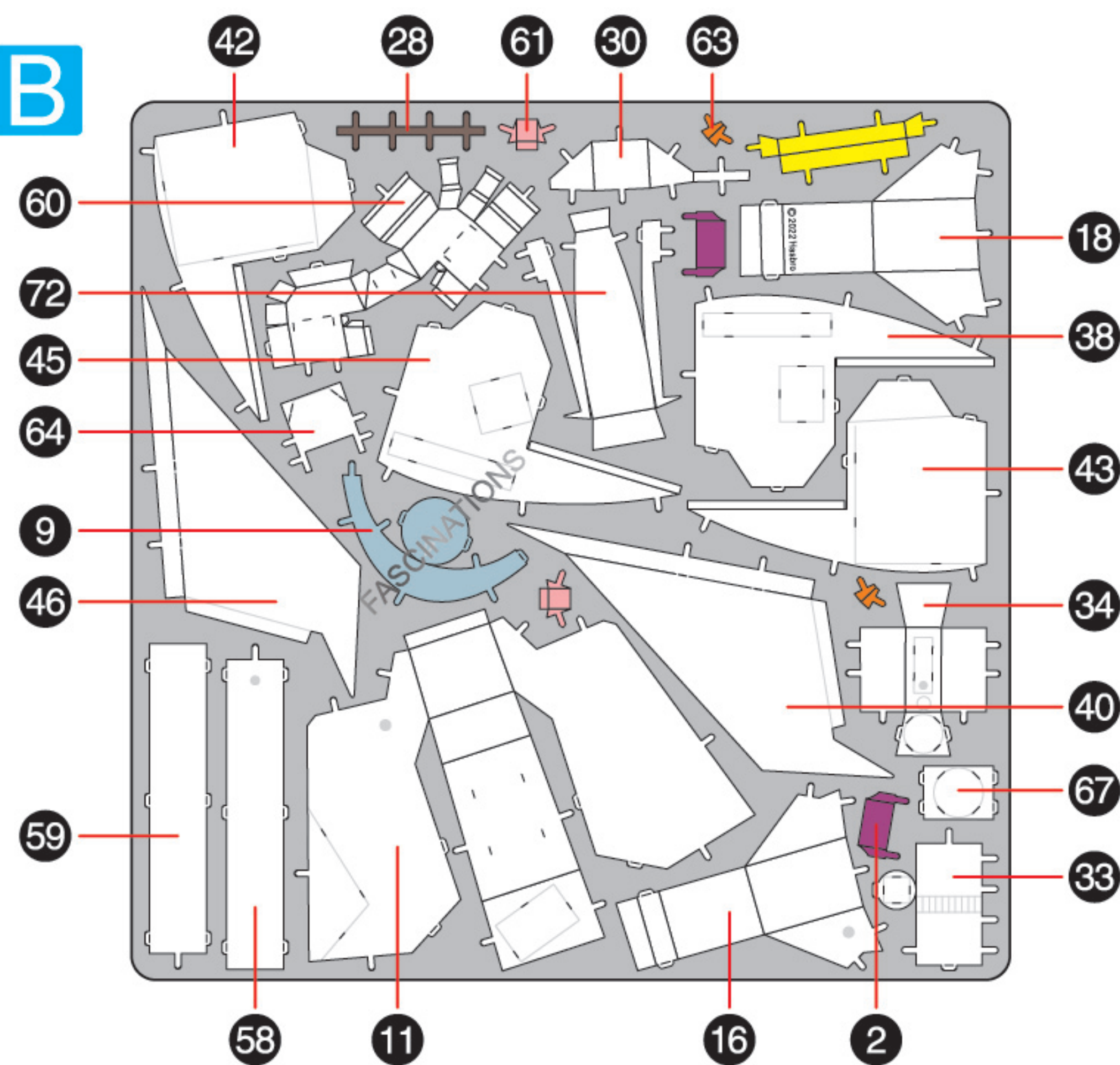
METAL SHEETS

Parts with same color are duplicates

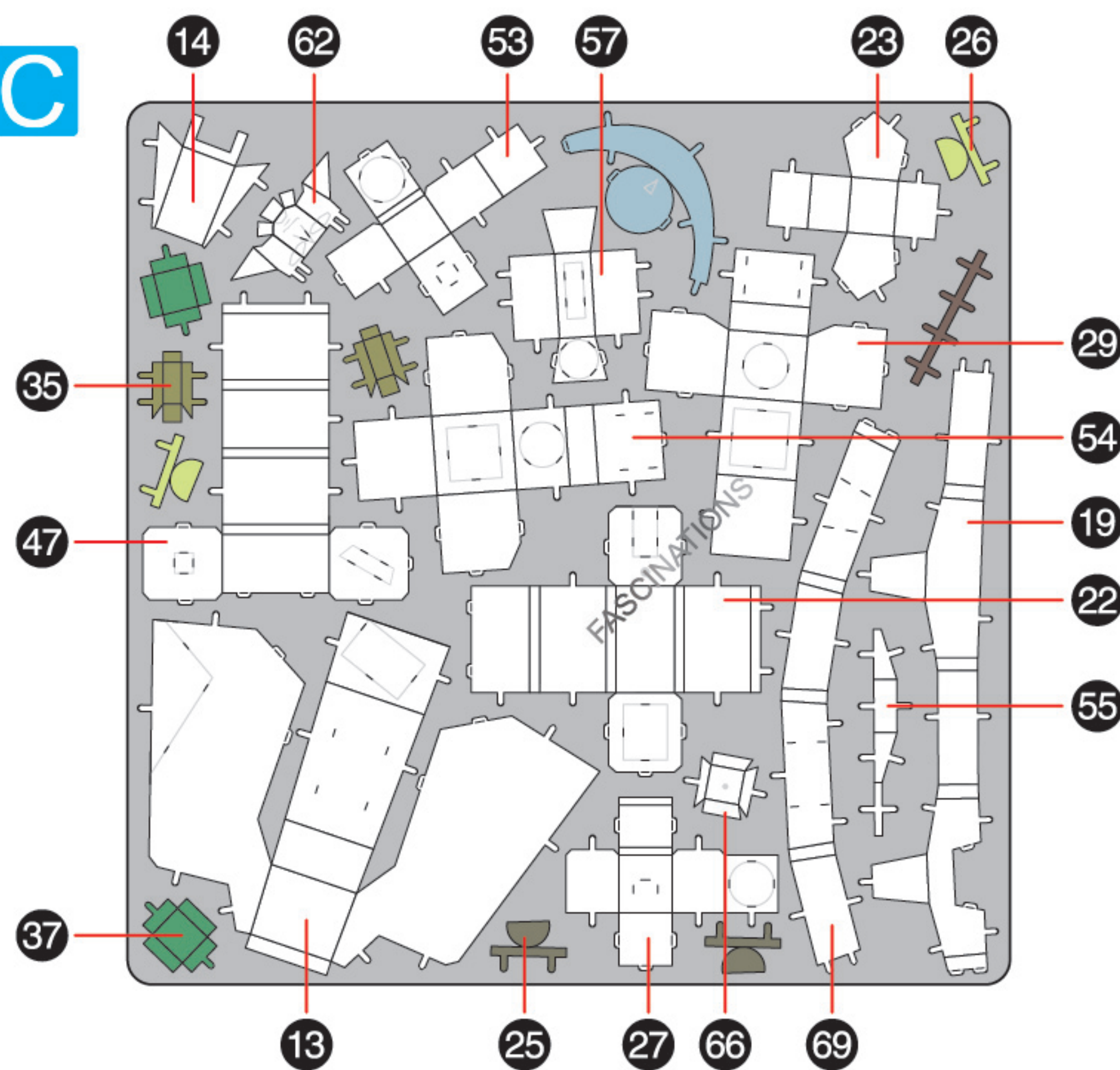
A



B



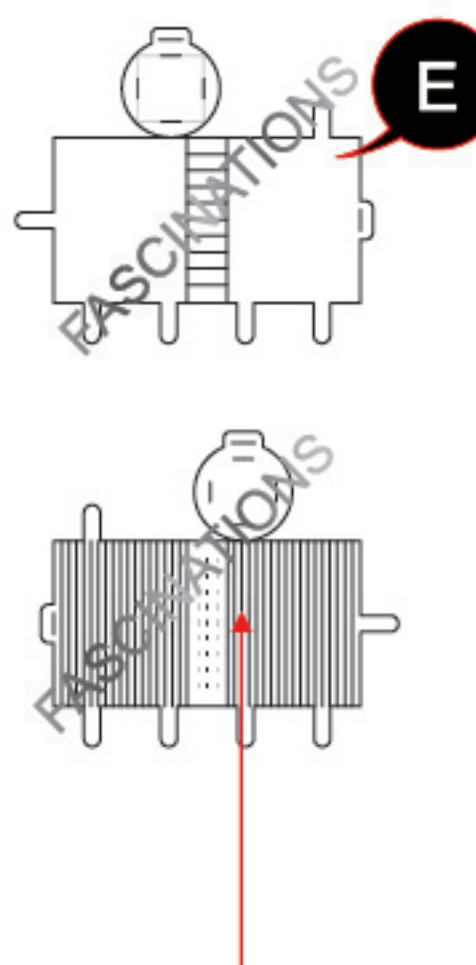
C



Go to www.metalearth.com/360/mms472 to see the zoomable PDF version of this instruction sheet

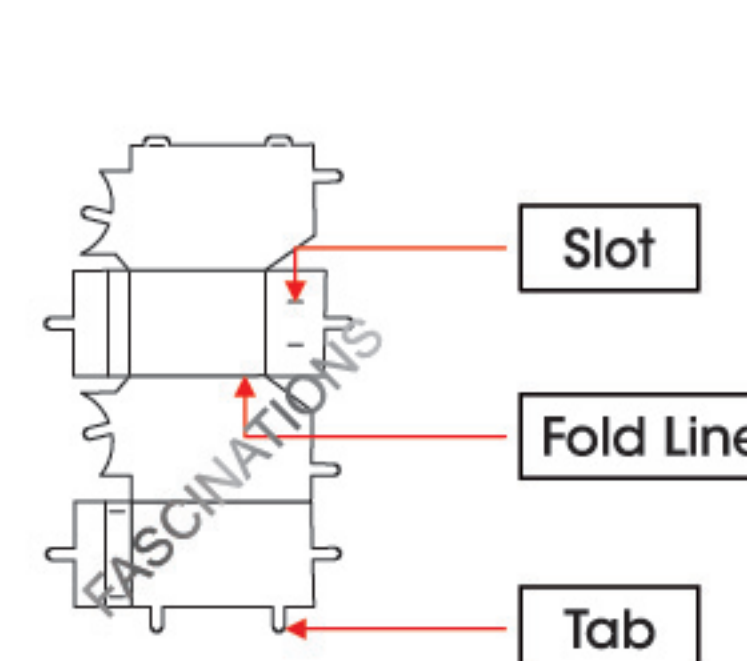
TO CREATE THE BEST CONNECTIONS

A - 56



Consider these engraved stripes as supporting features for the bend

A - 6



Legends:

- E** Engraved / Color side
- NE** Non - engraved / Silver side
- Attention point
- Insert tab and bend 90 degrees
- Insert tab and twist 90 degrees

Recommended tools:

- Wire cutters: helpful for taking parts from the metal sheets.
- Tweezers or needle nose pliers: helpful for folding parts, bending and twisting tabs.

Assembly tip:

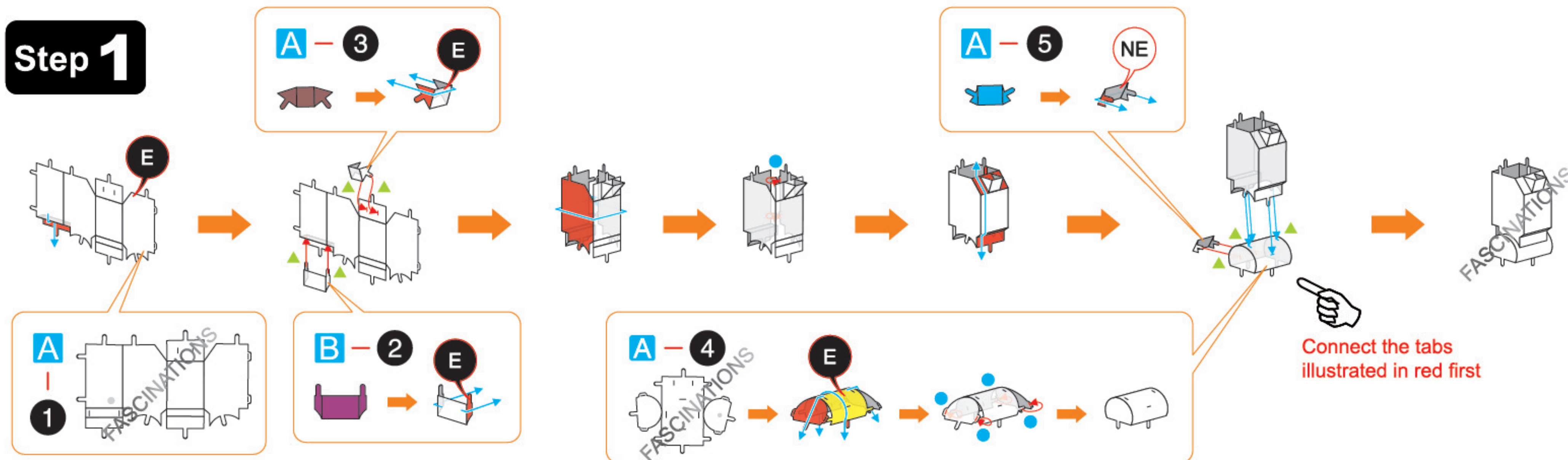
If needed, slightly twist tabs to hold parts together then untwist and bend them down for a nice finish.



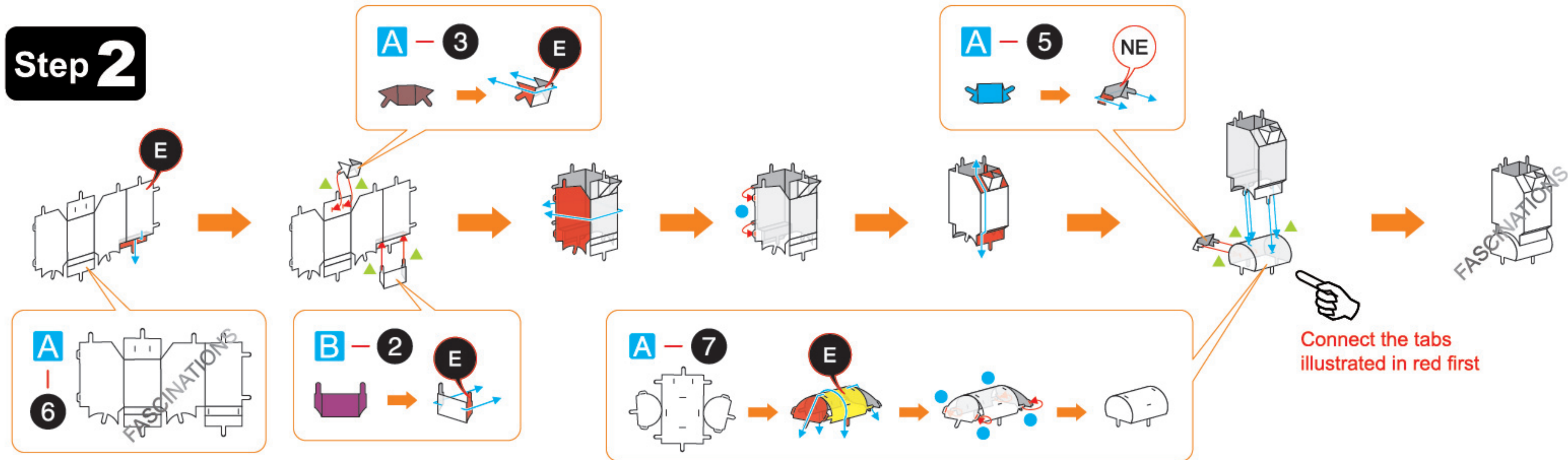
In order to avoid possible injury from sharp edges, please carefully discard the metal sheets after parts have been removed.

ASSEMBLY FLOW CHART

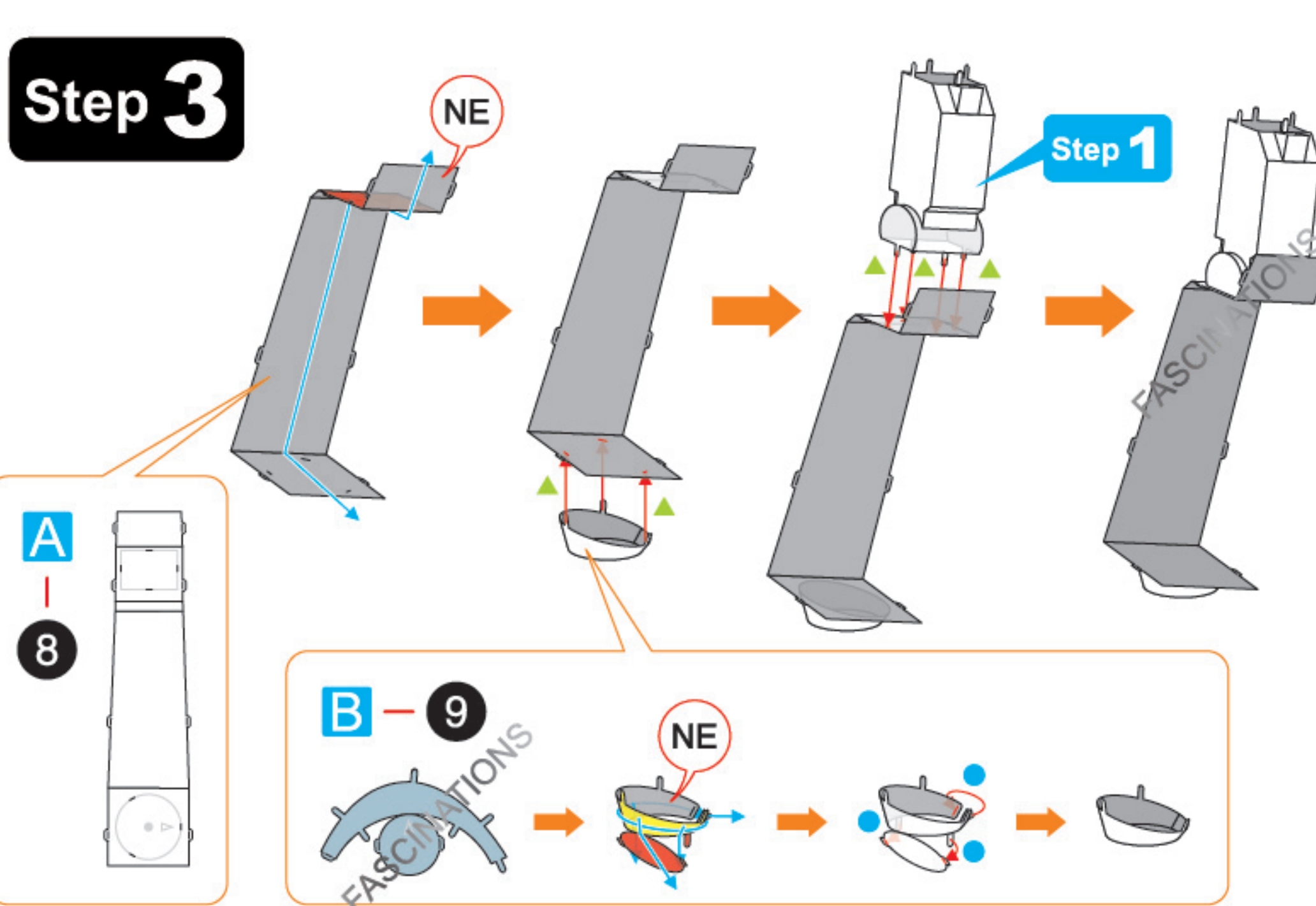
Step 1



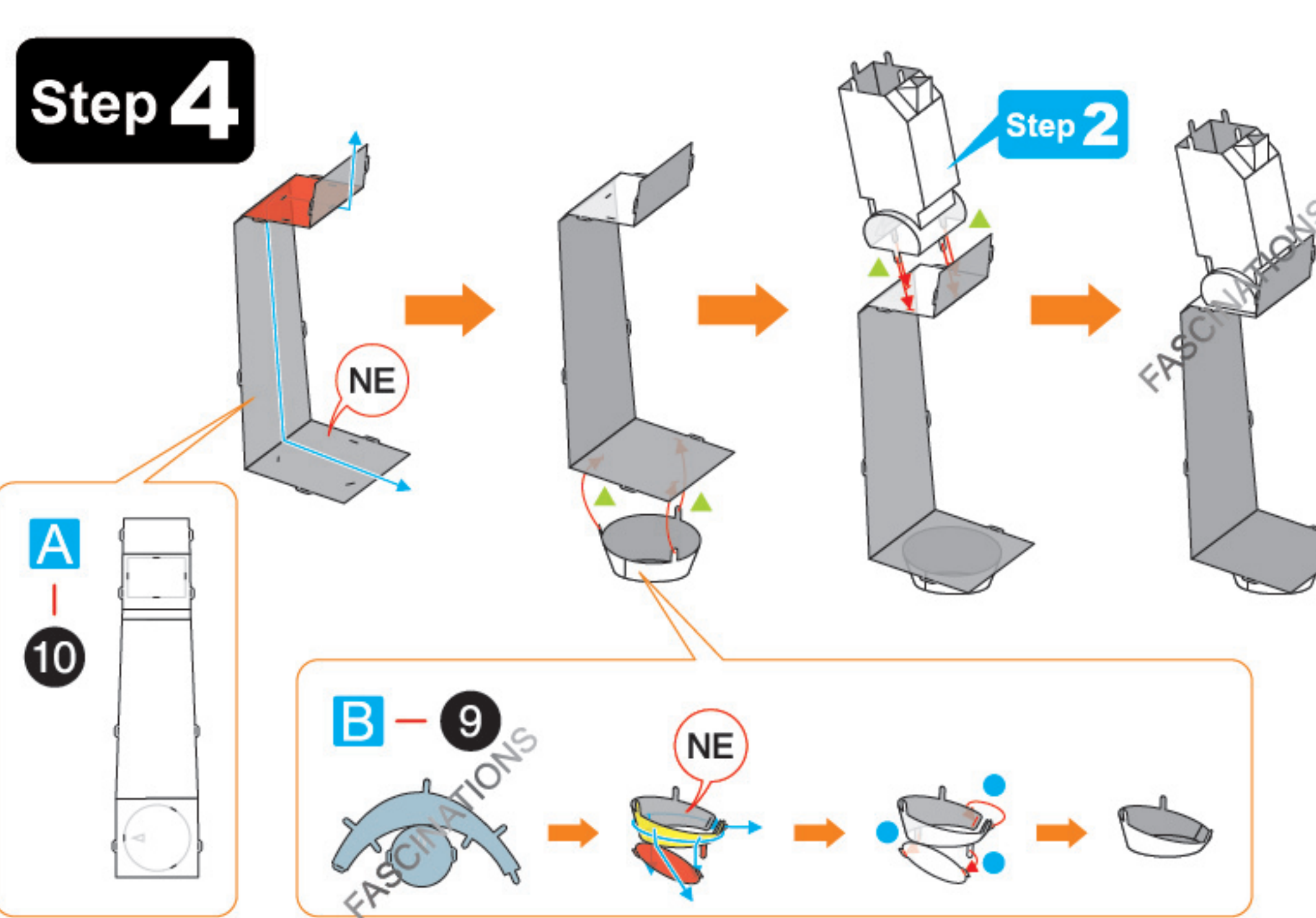
Step 2

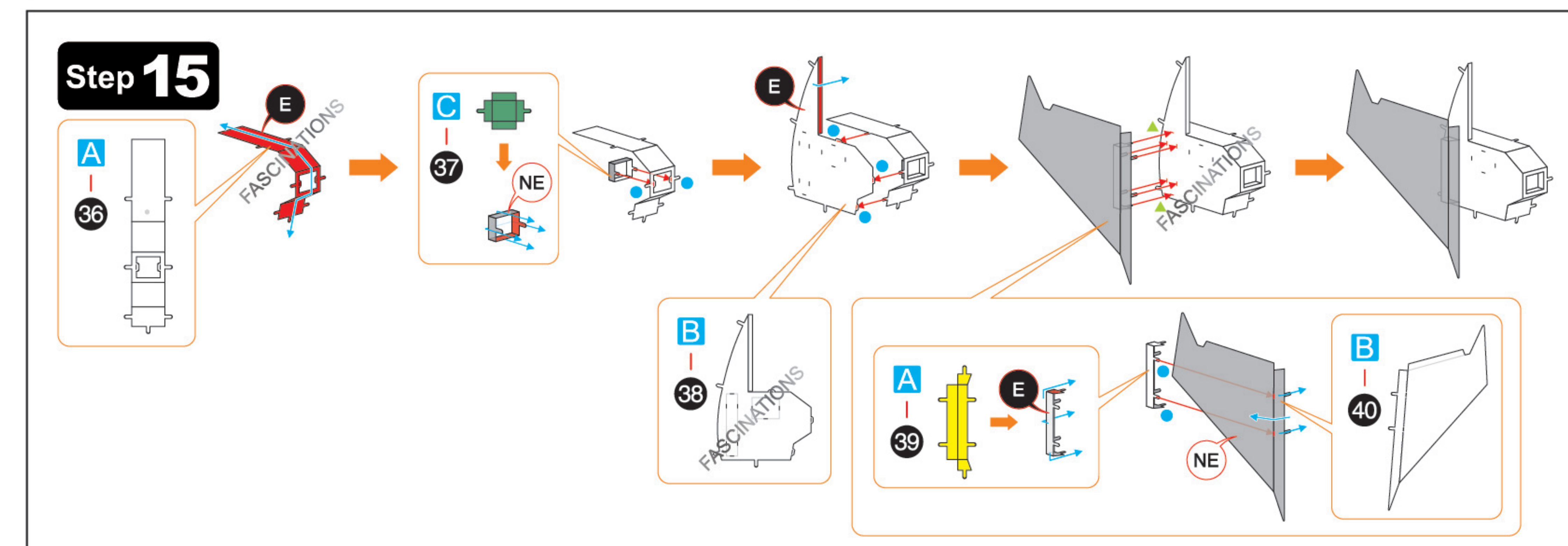
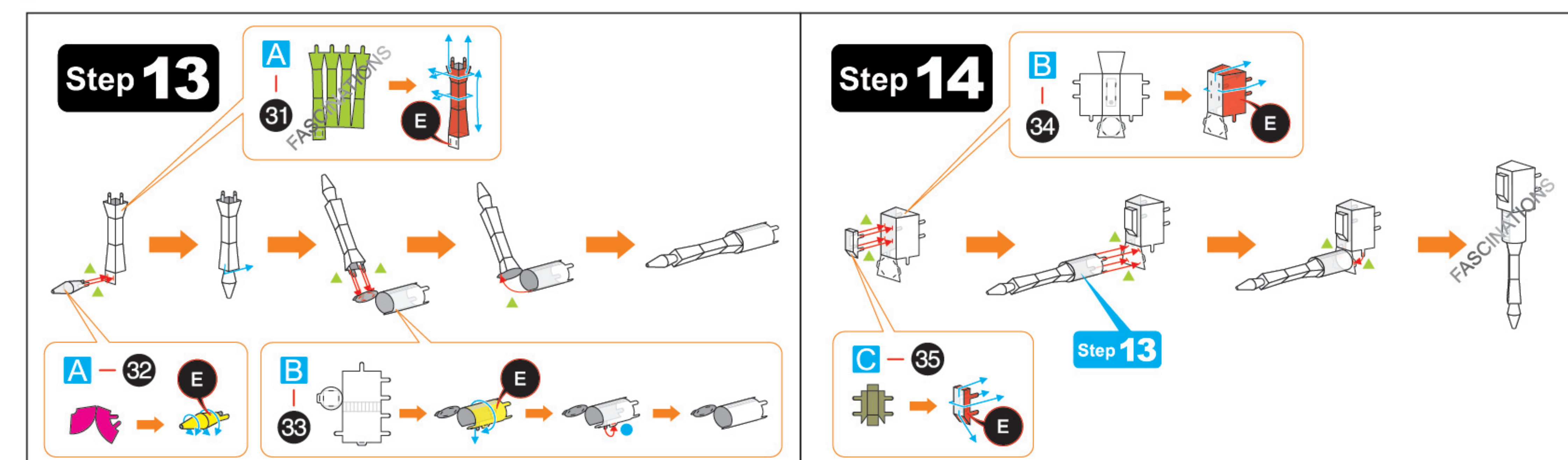
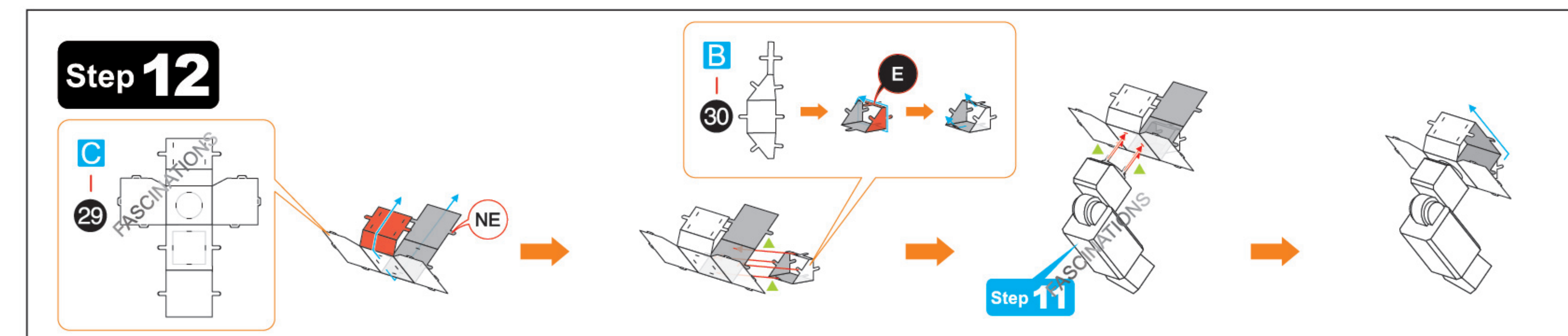
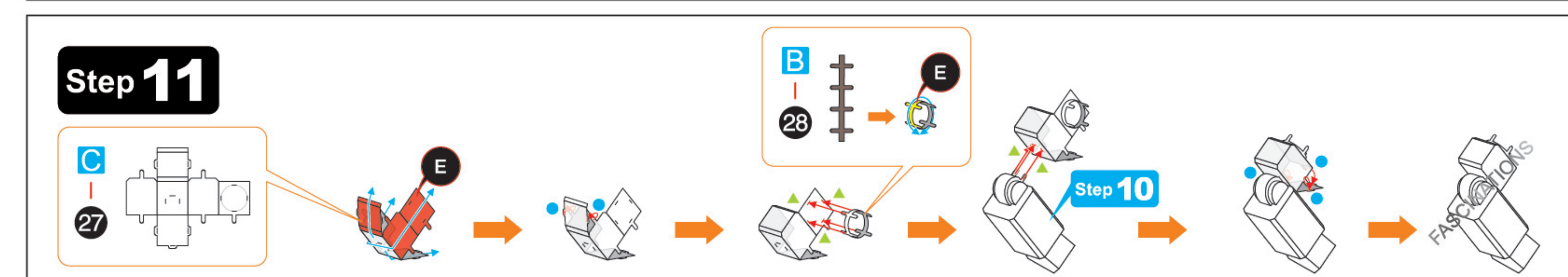
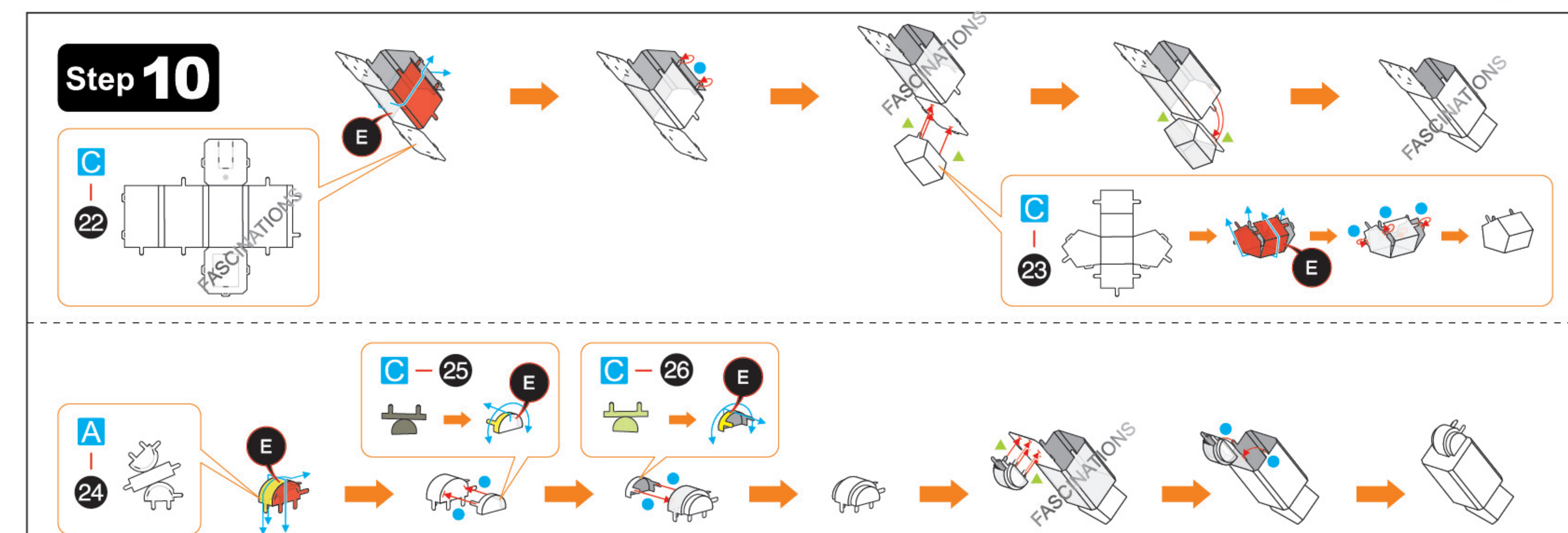
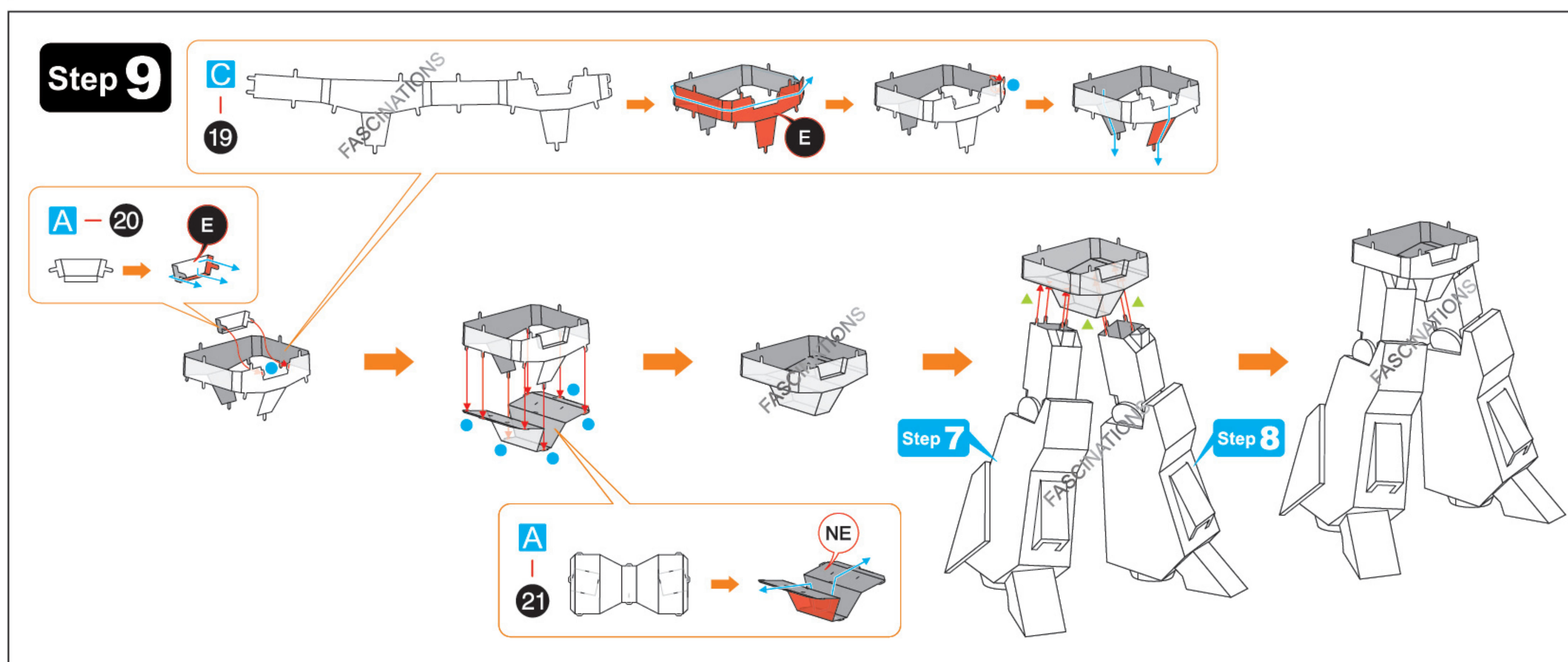
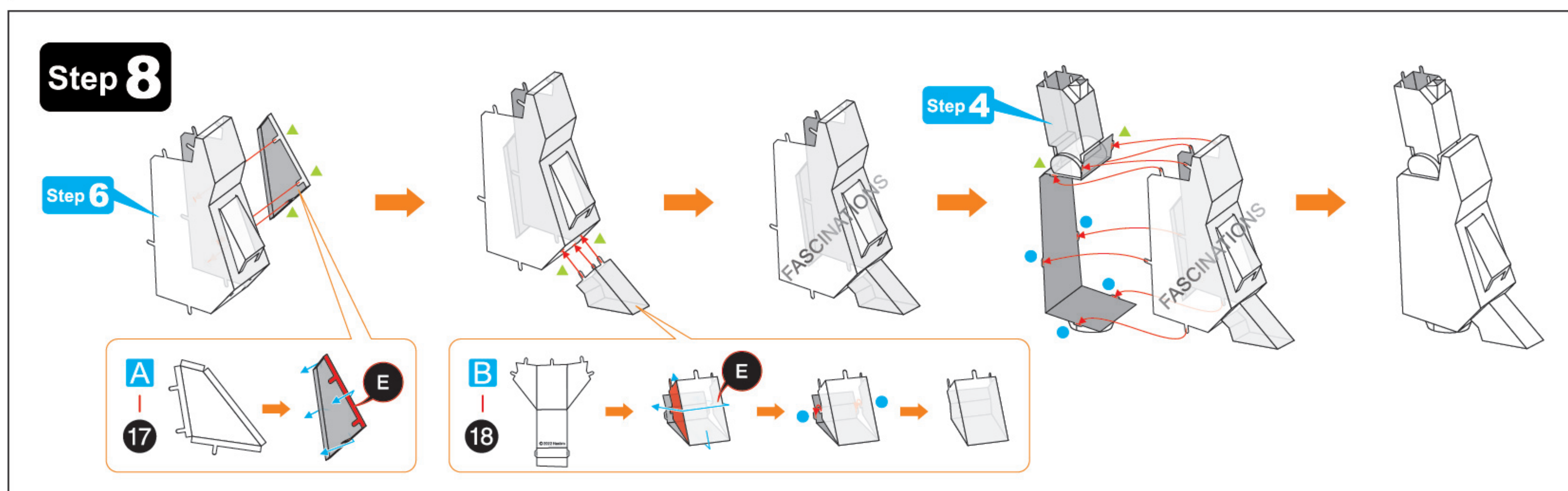
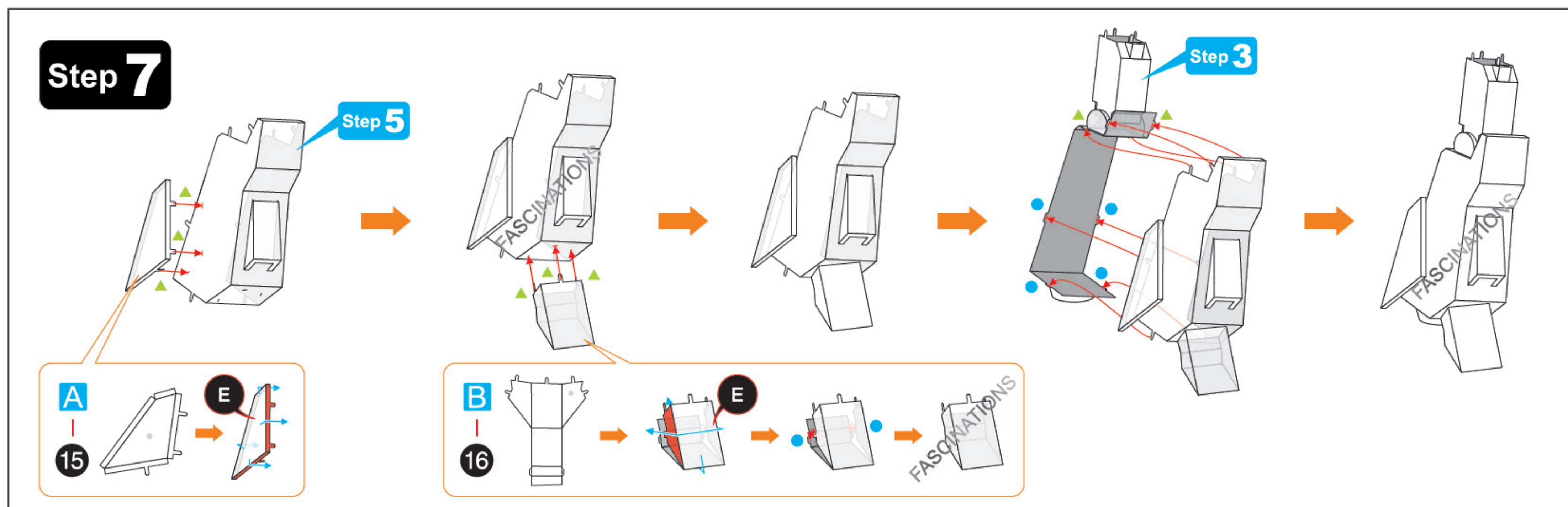
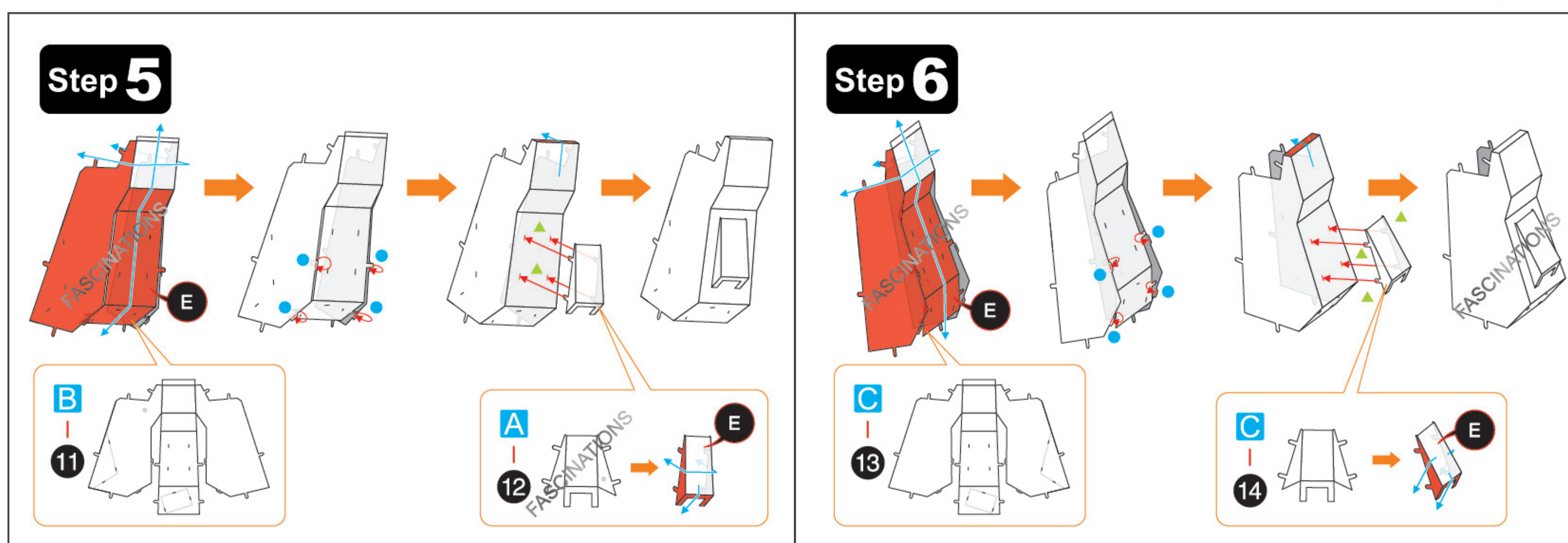


Step 3

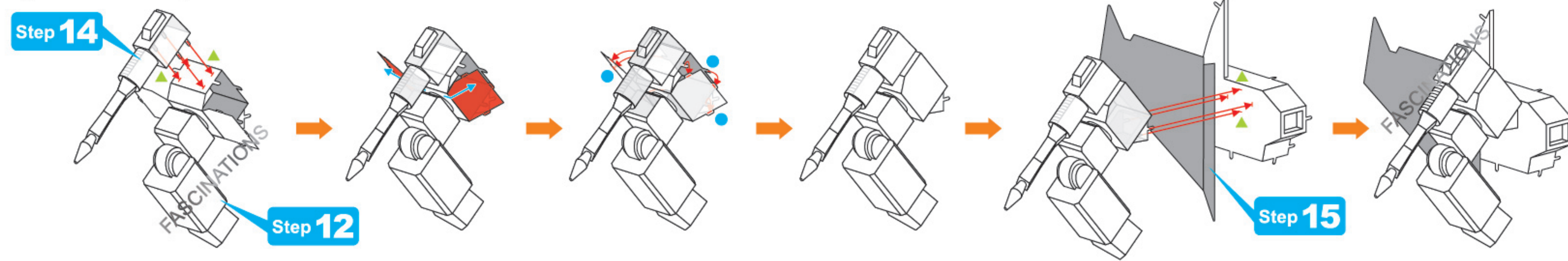


Step 4

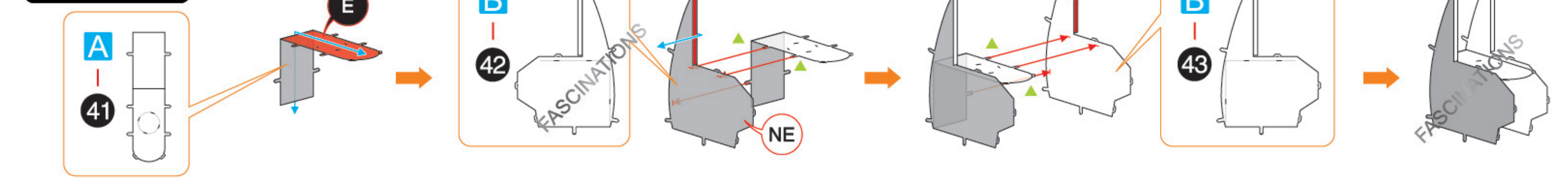




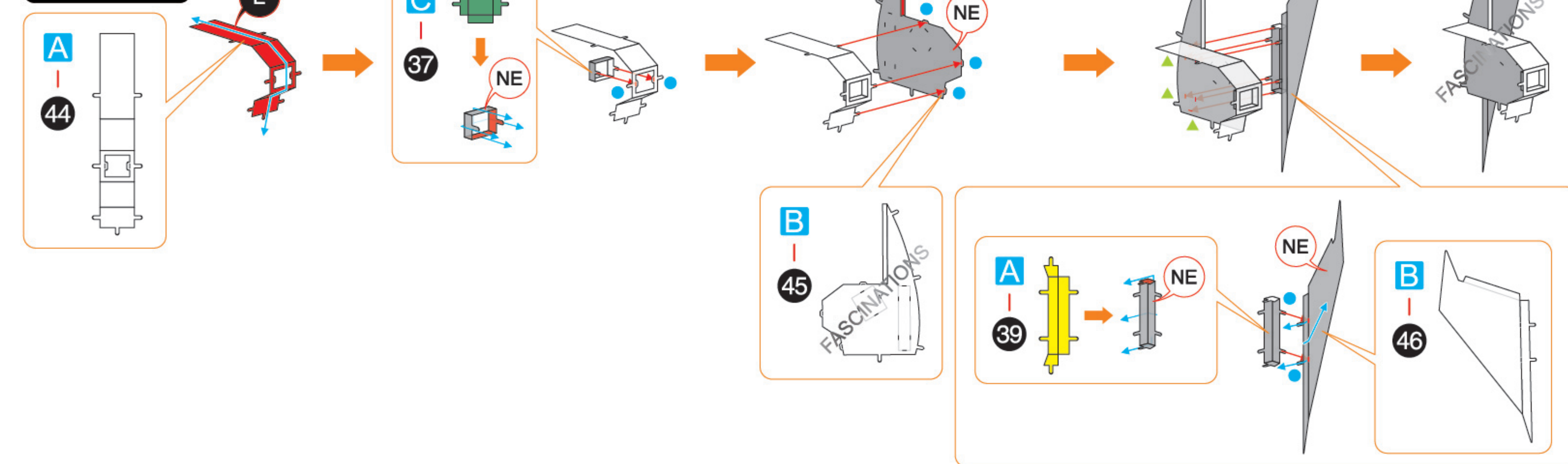
Step 16



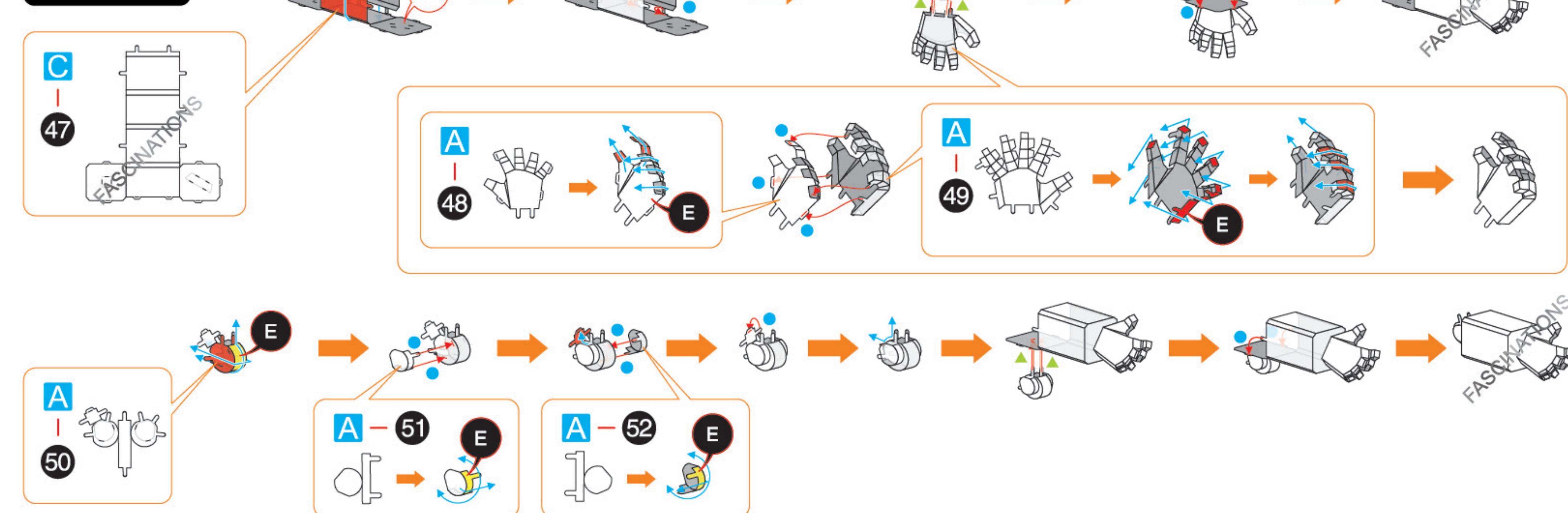
Step 17



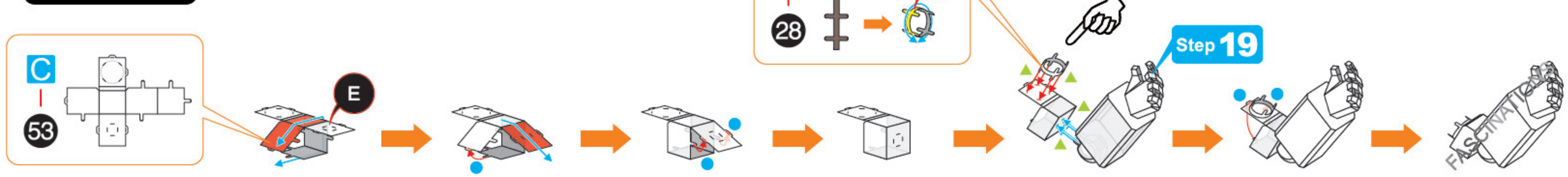
Step 18



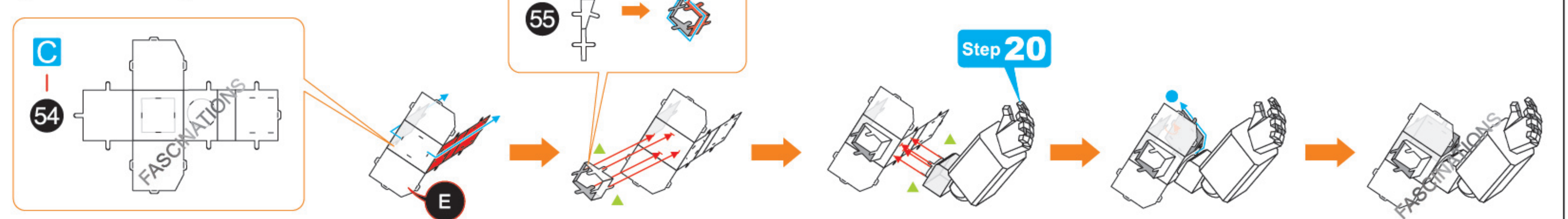
Step 19



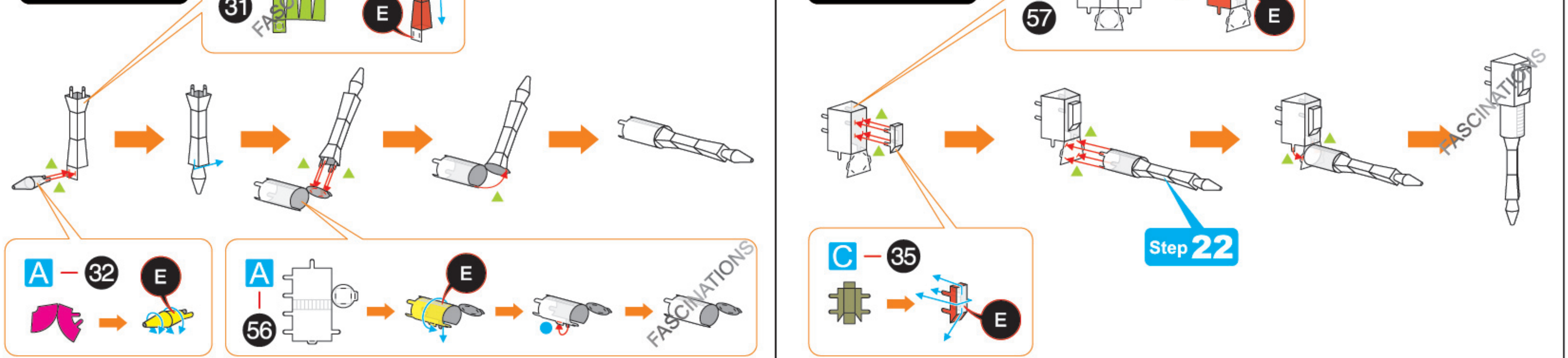
Step 20



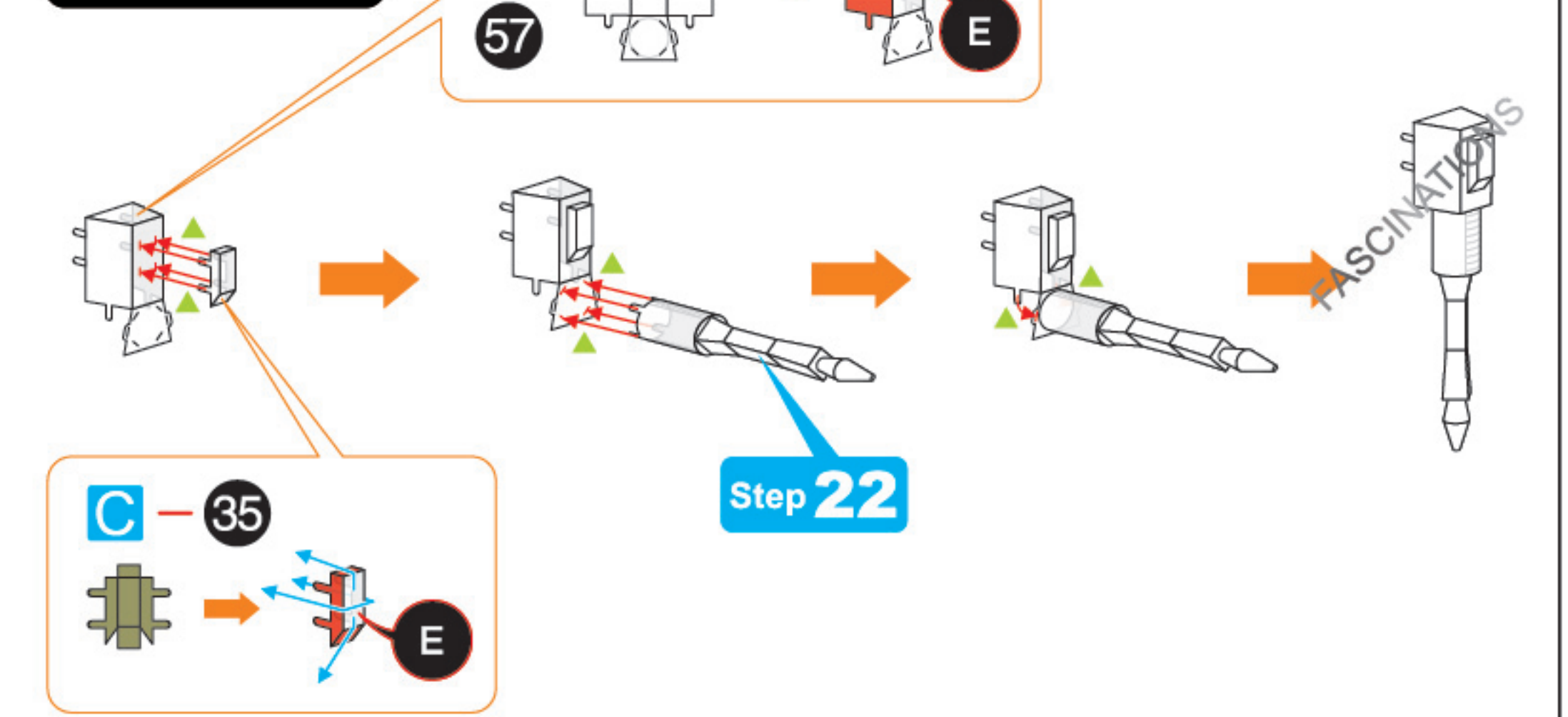
Step 21



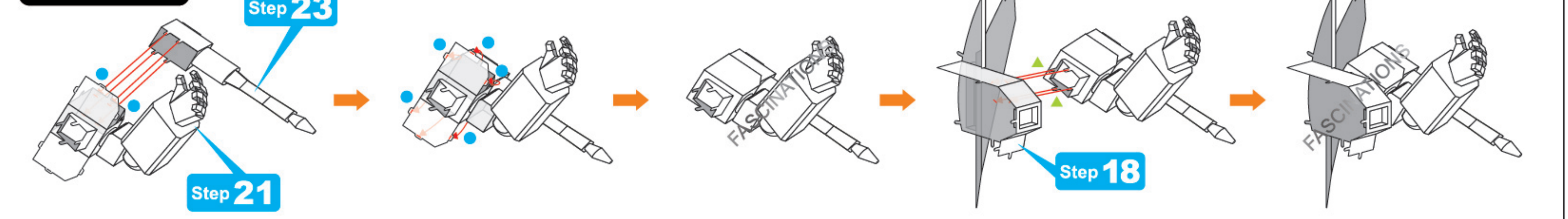
Step 22



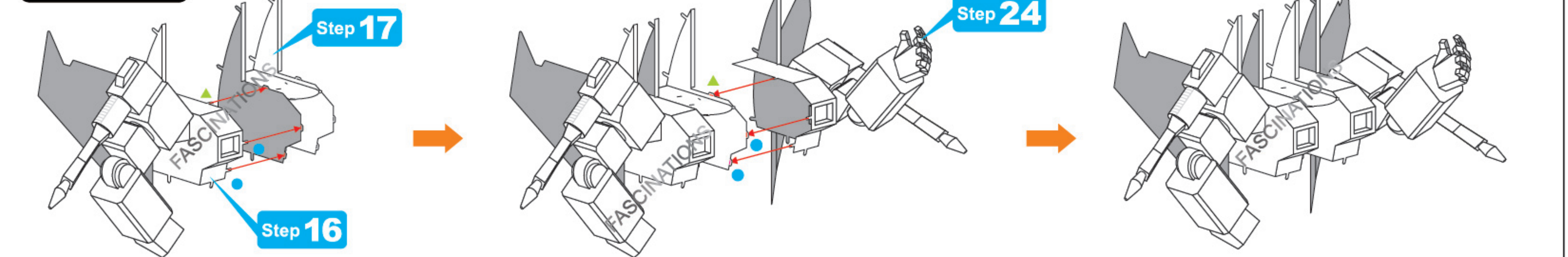
Step 23



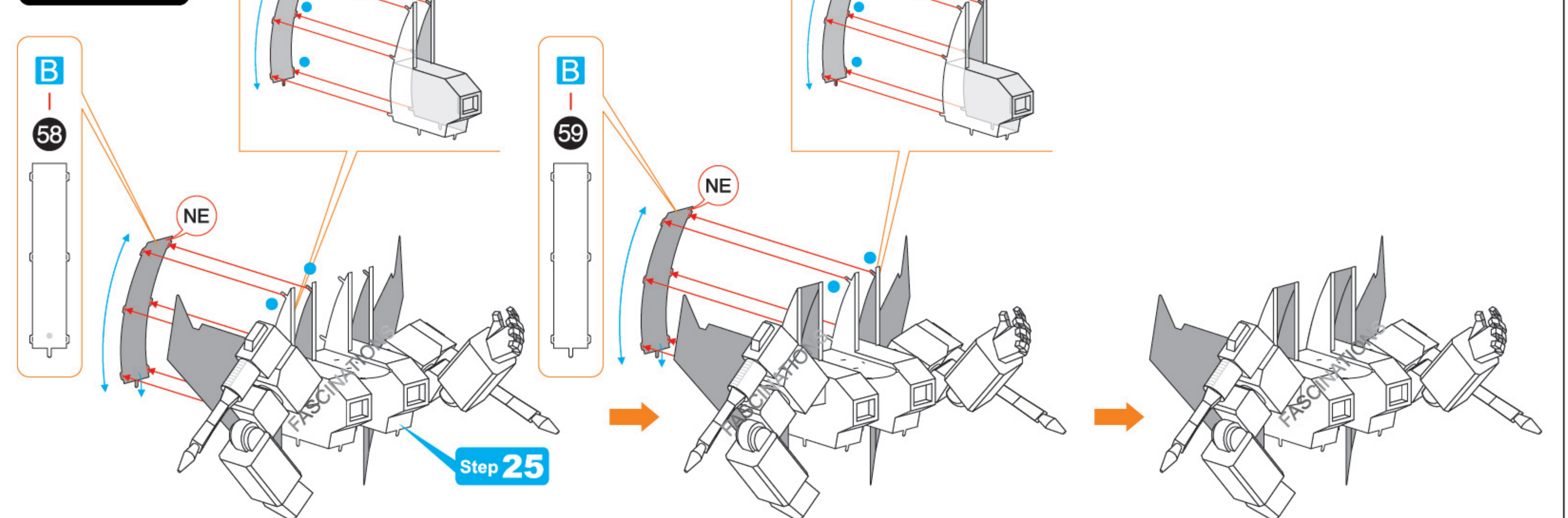
Step 24



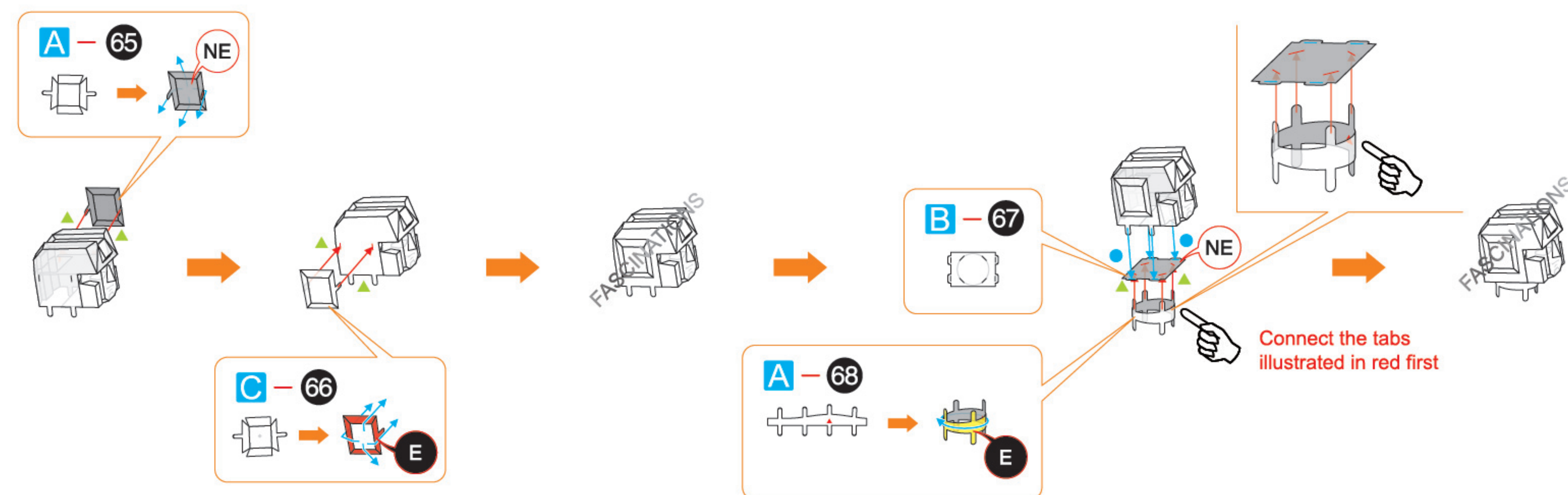
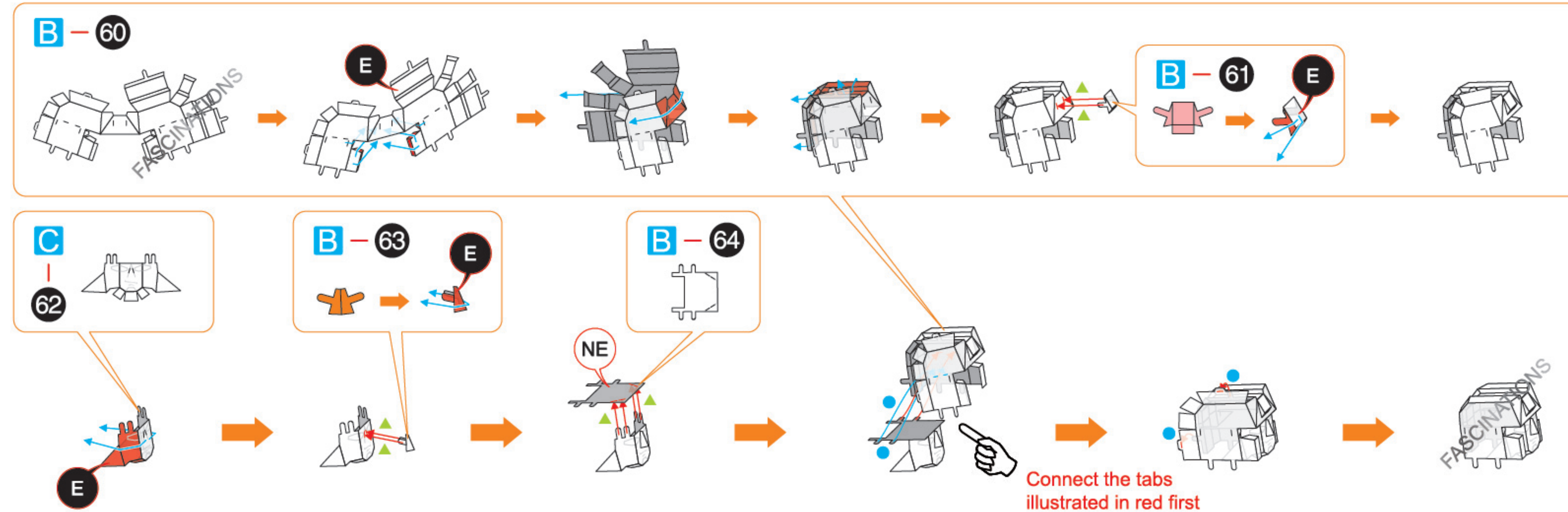
Step 25



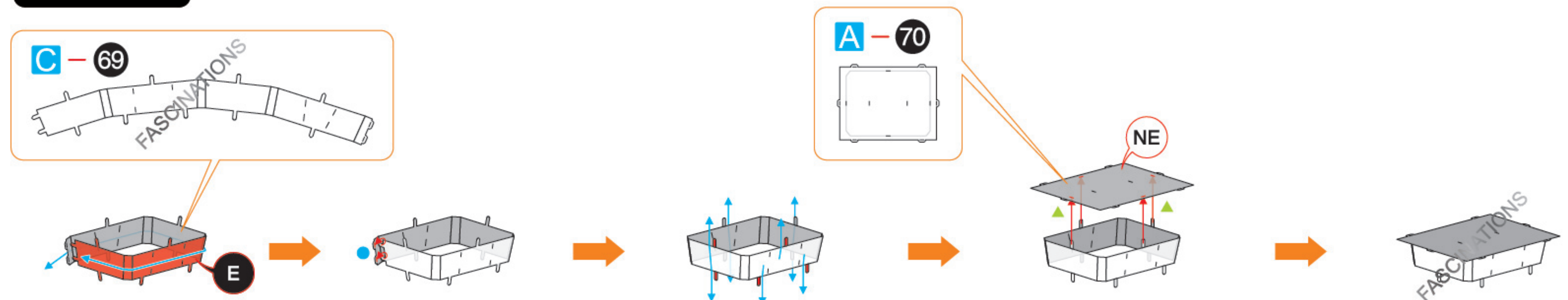
Step 26



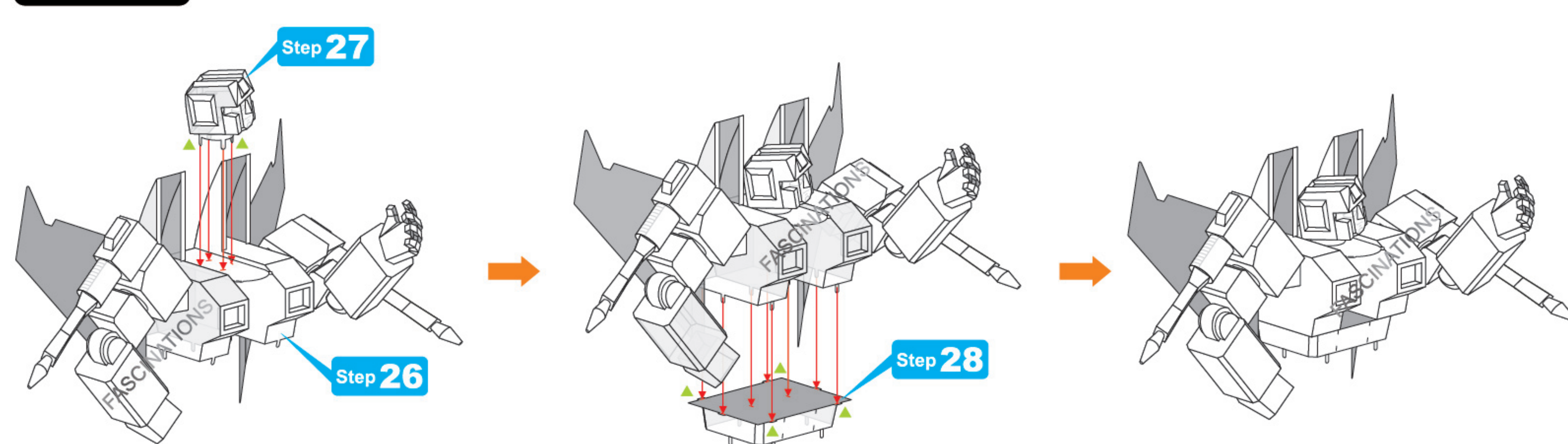
Step 27



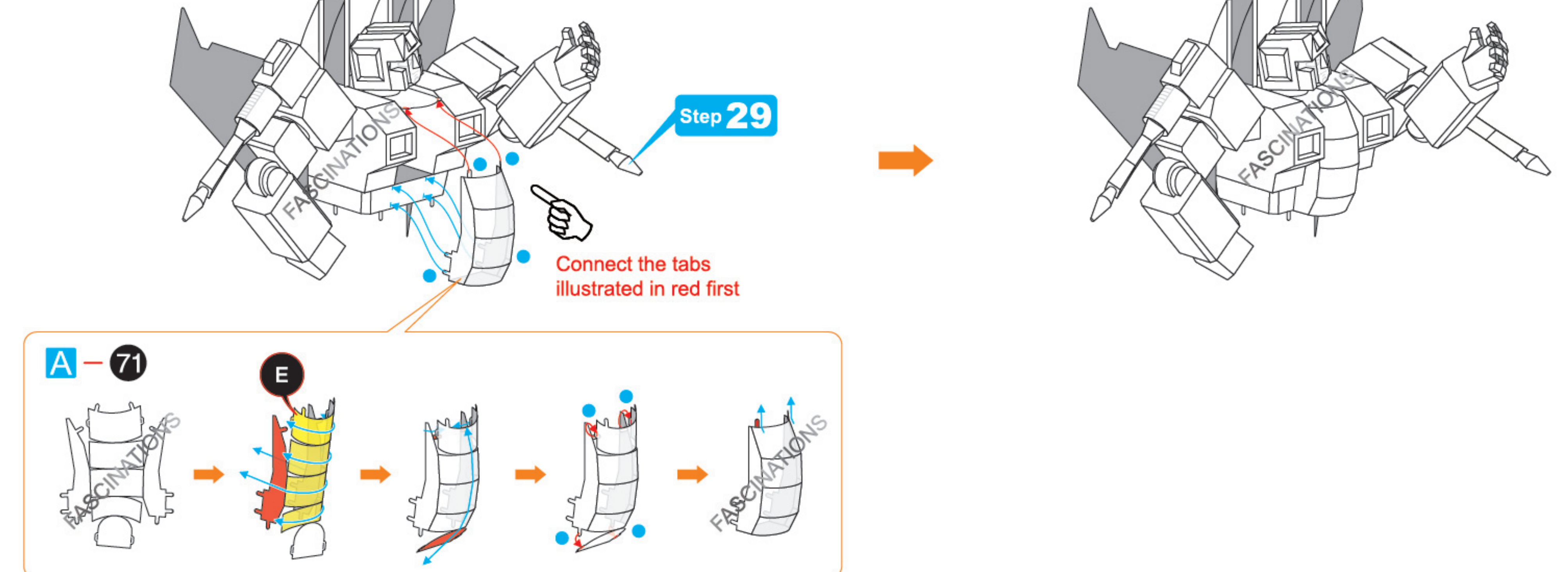
Step 28



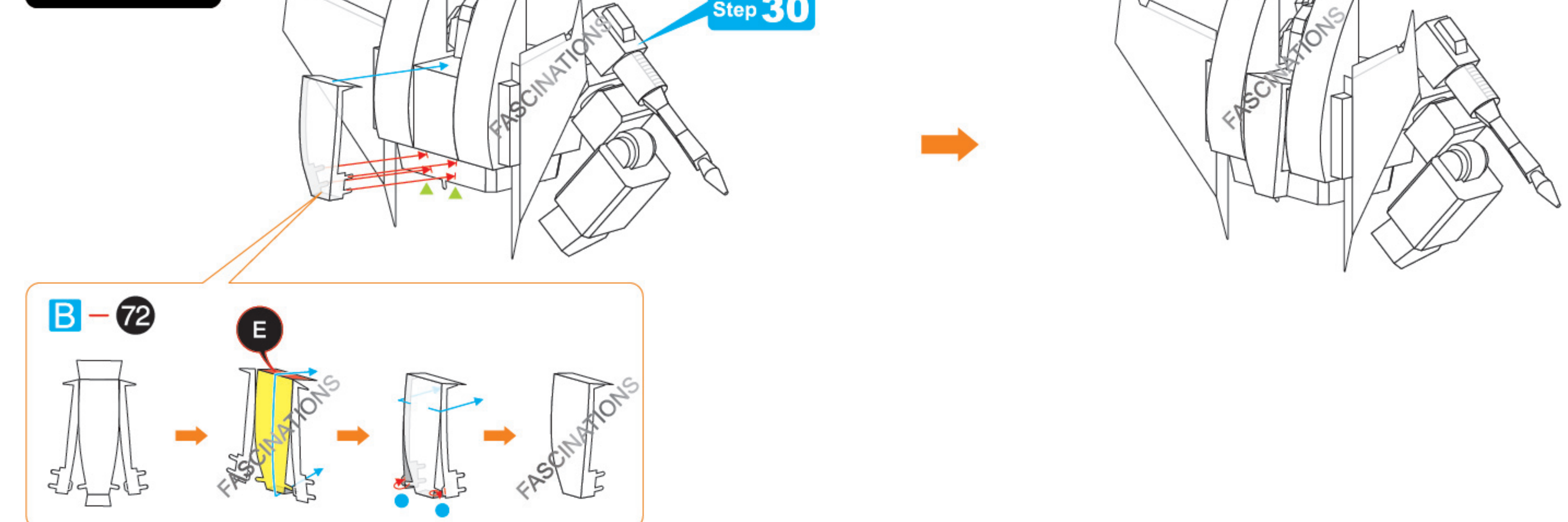
Step 29



Step 30



Step 31



Step 32

