



SPIDER-MAN
MMS474



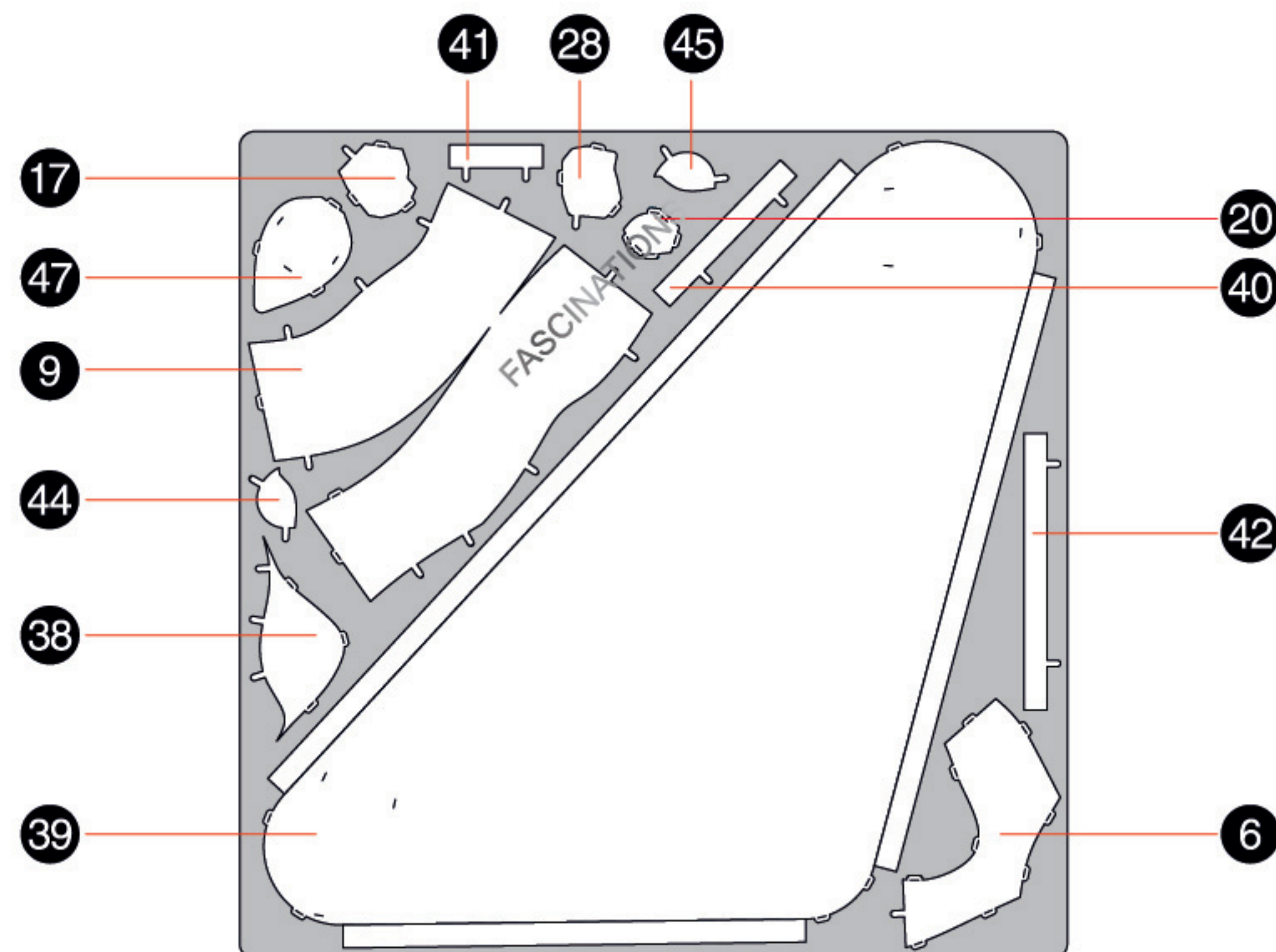
© MARVEL



It is highly recommended that you visit
www.metal-earth.com/360/mms474
to see the completed model before assembling your own

METAL SHEETS

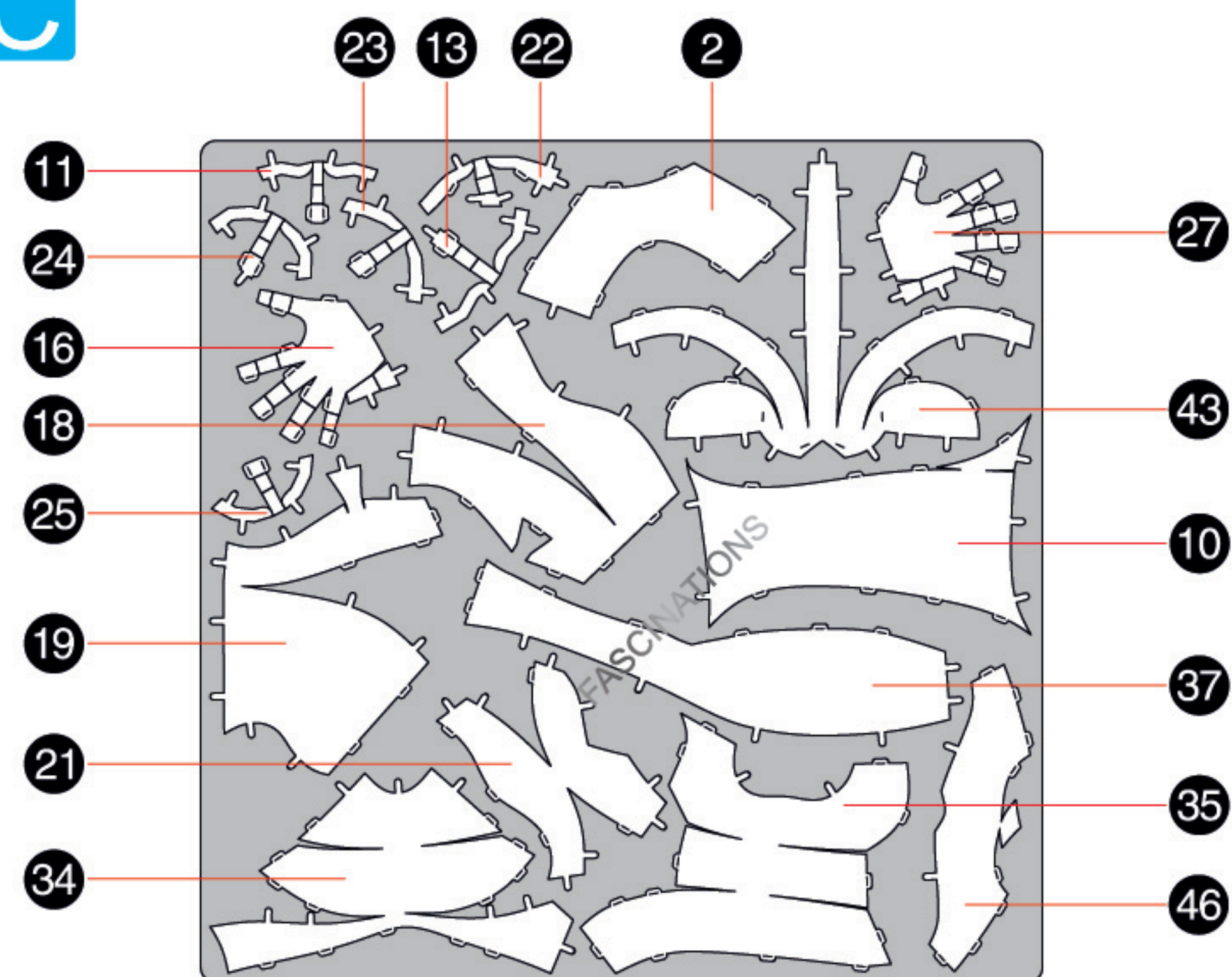
A



B

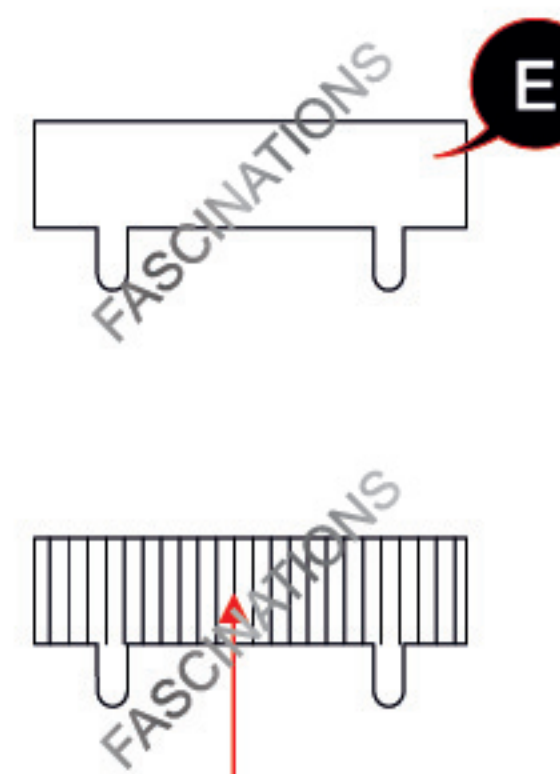


C



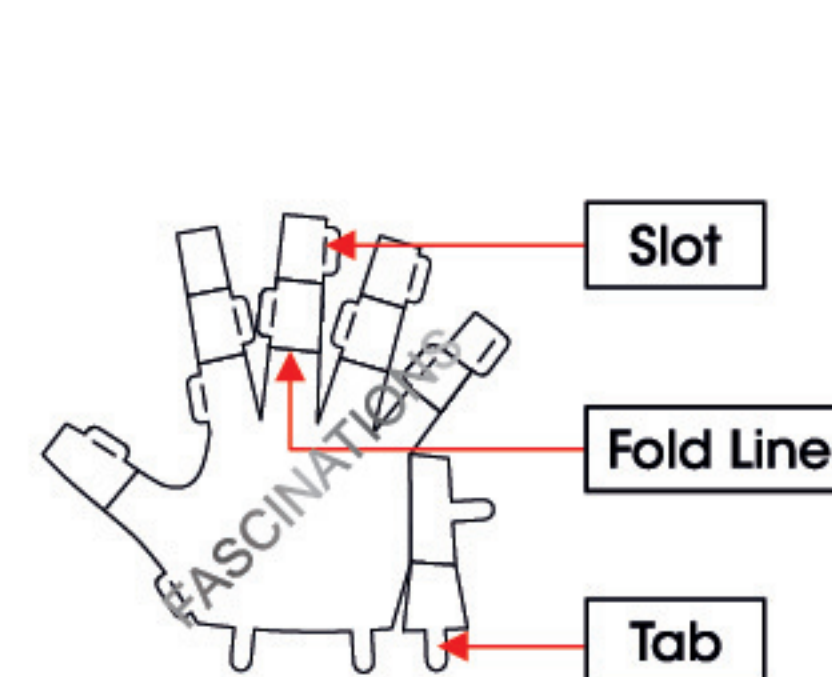
TO CREATE THE BEST CONNECTIONS

A - 41



Consider these engraved stripes as supporting features for the bend

C - 27



Legends:

- E** Engraved/ Color side
- NE** Non - engraved/ Silver side
- Attention point
- Insert tab and bend 90 degrees
- Insert tab and twist 90 degrees

Recommended tools:

- Wire cutters: helpful for taking parts from the metal sheets.
- Tweezers or needle nose pliers: helpful for folding parts, bending and twisting tabs.

Assembly tip:

If needed, slightly twist tabs to hold parts together then untwist and bend them down for a nice finish.

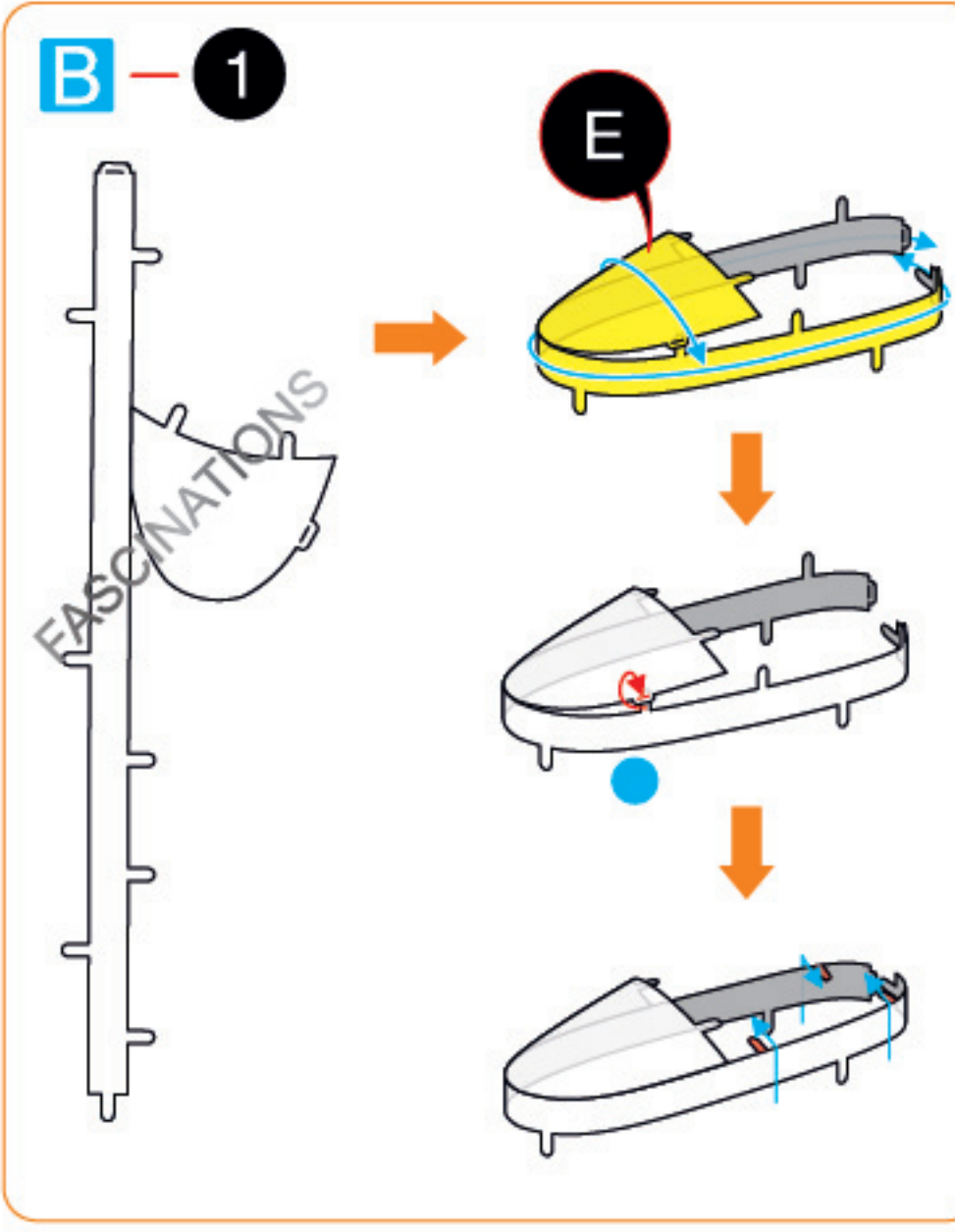


In order to avoid possible injury from sharp edges, please carefully discard the metal sheets after parts have been removed.

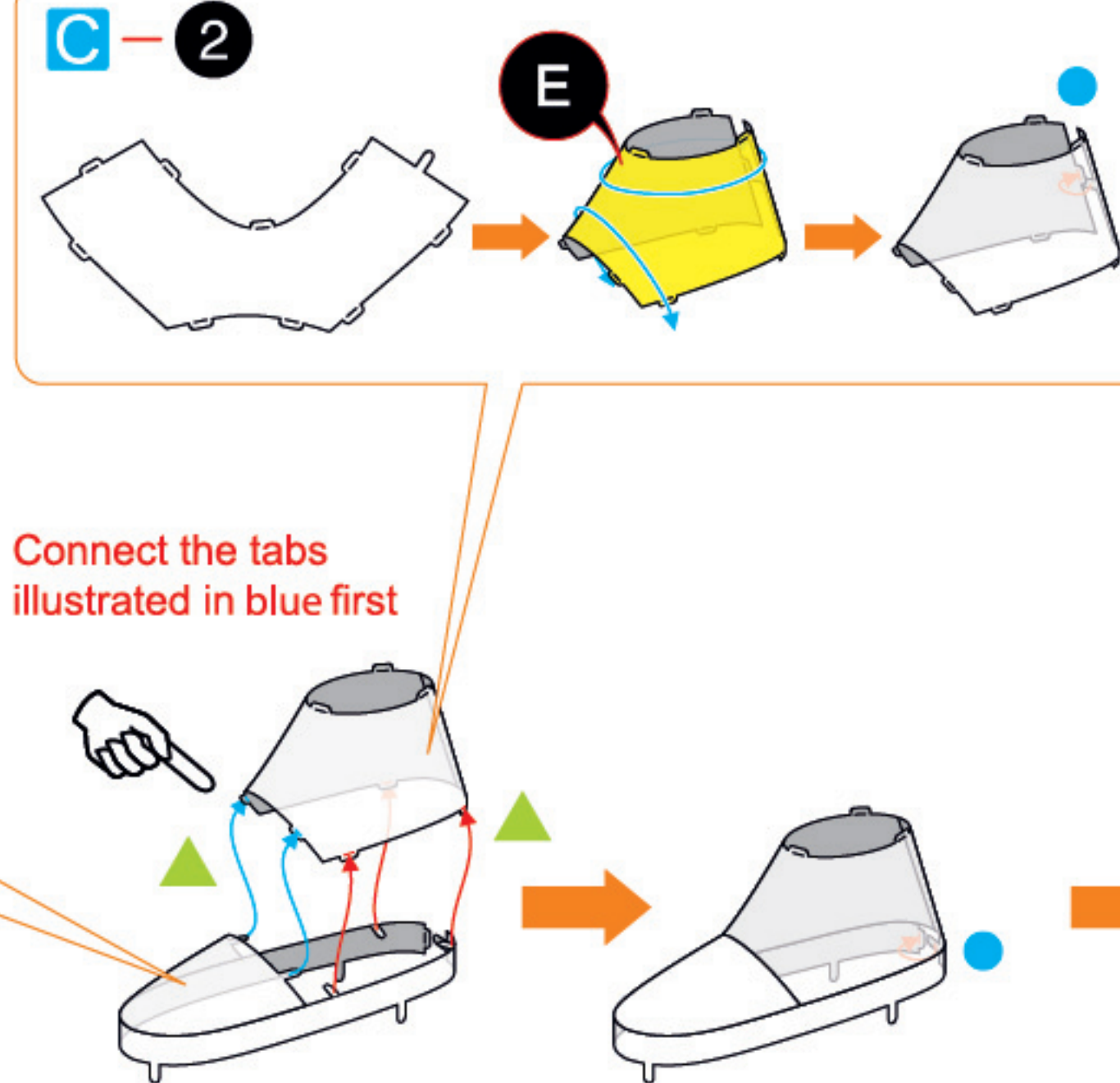
ASSEMBLY STEPS

Step 1

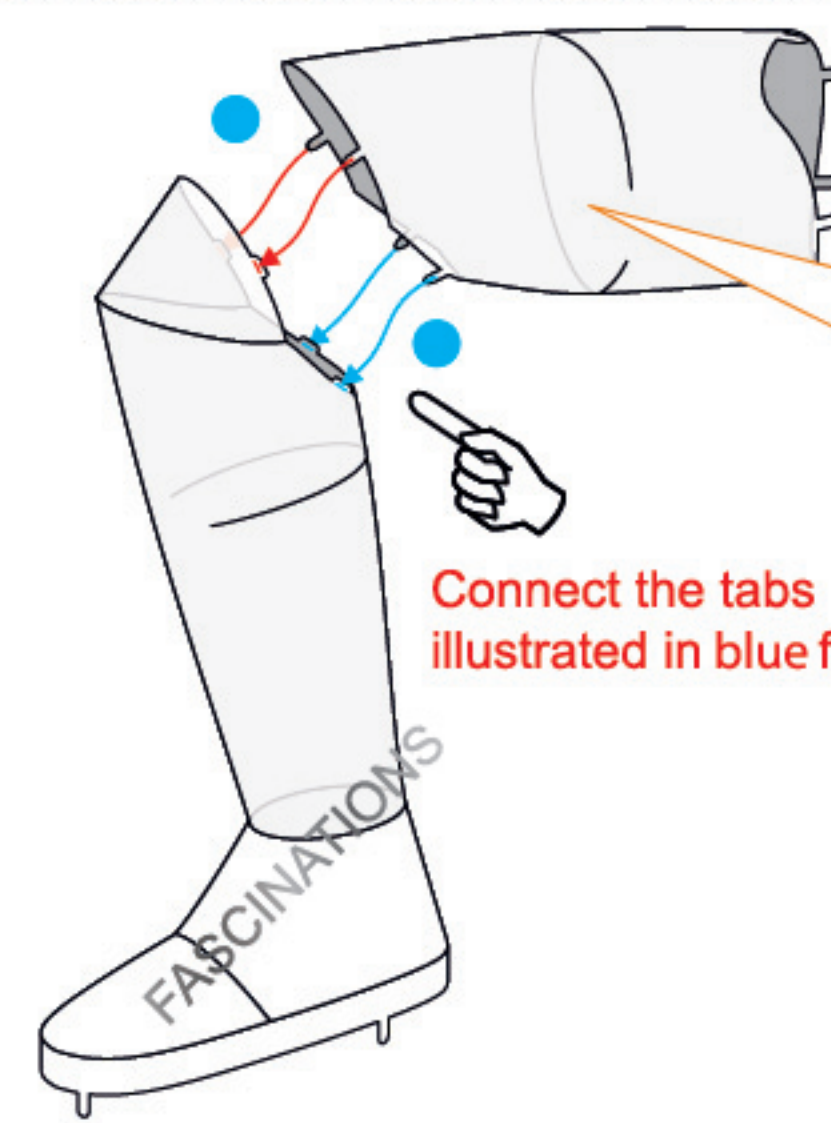
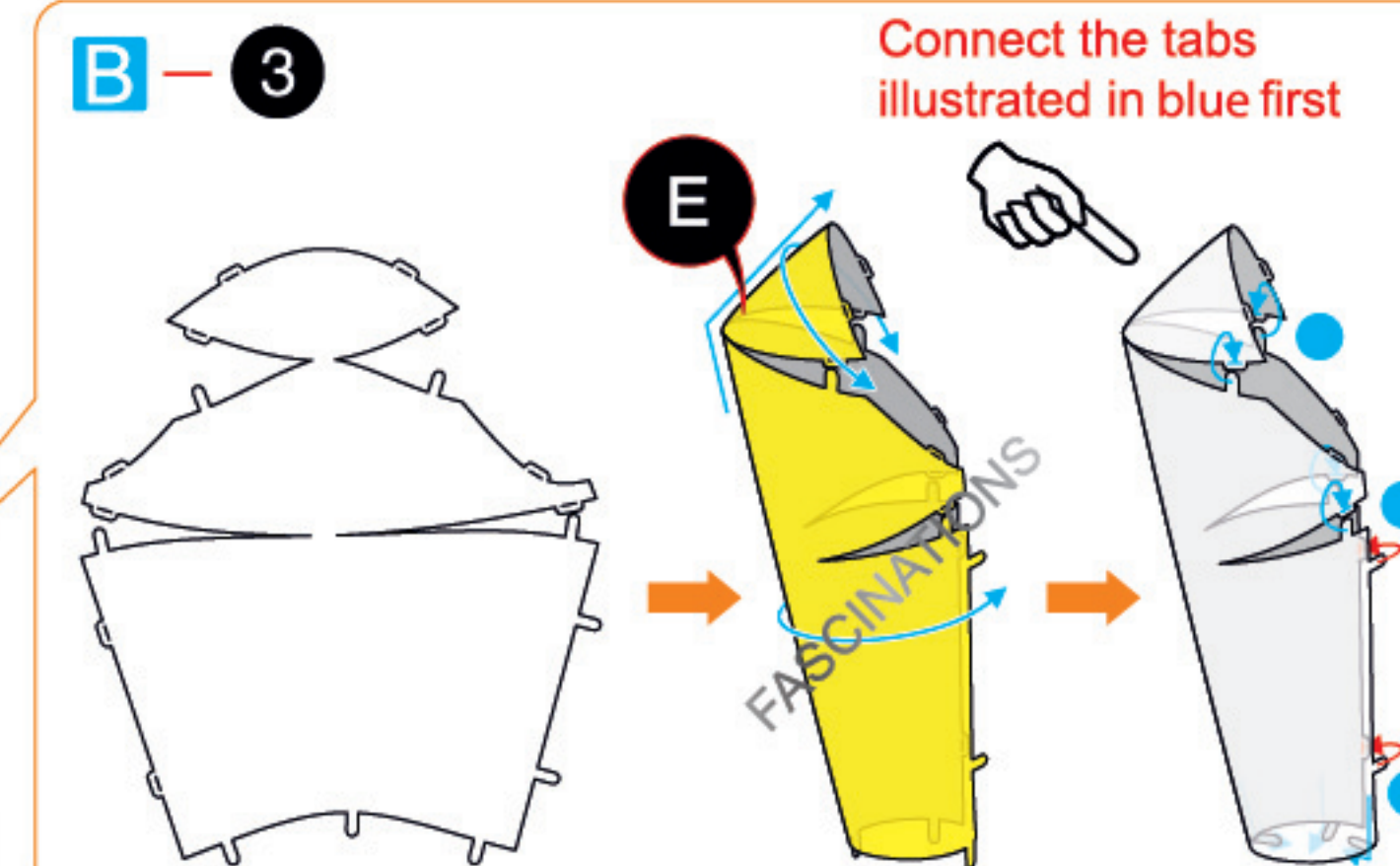
B - 1



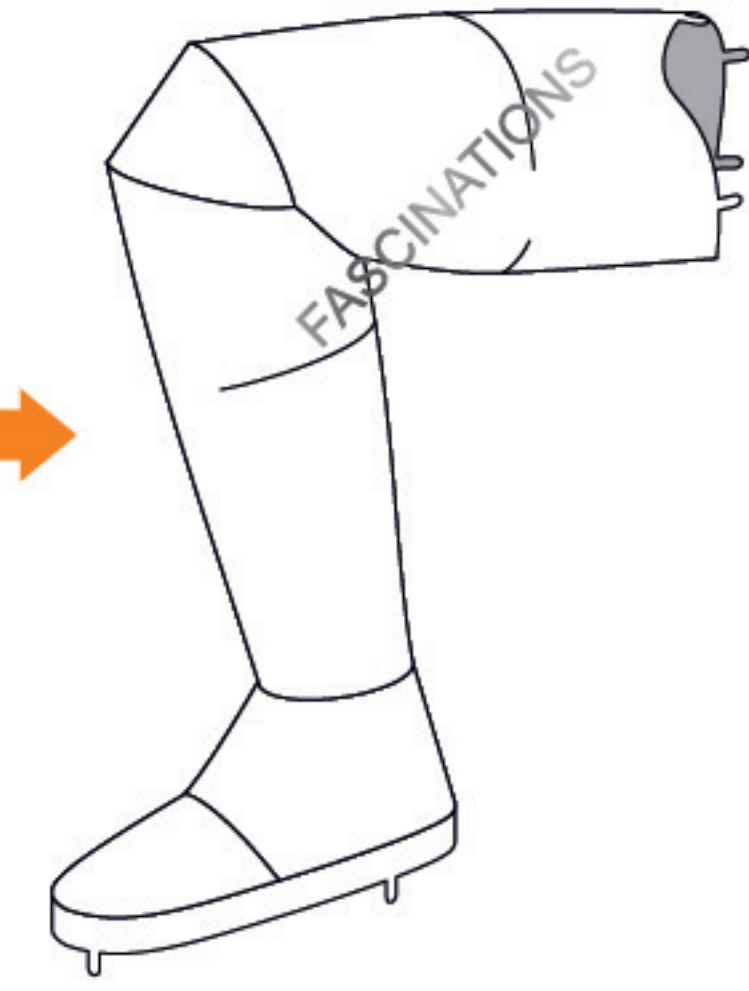
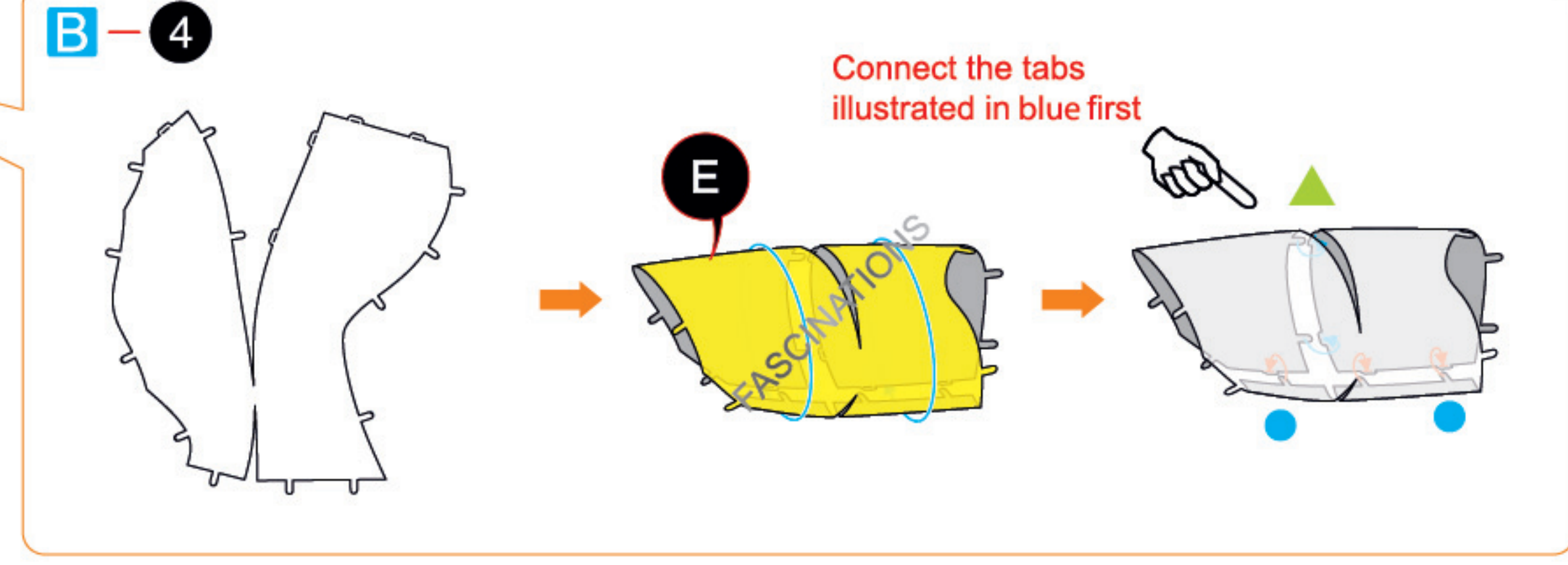
C - 2



B - 3

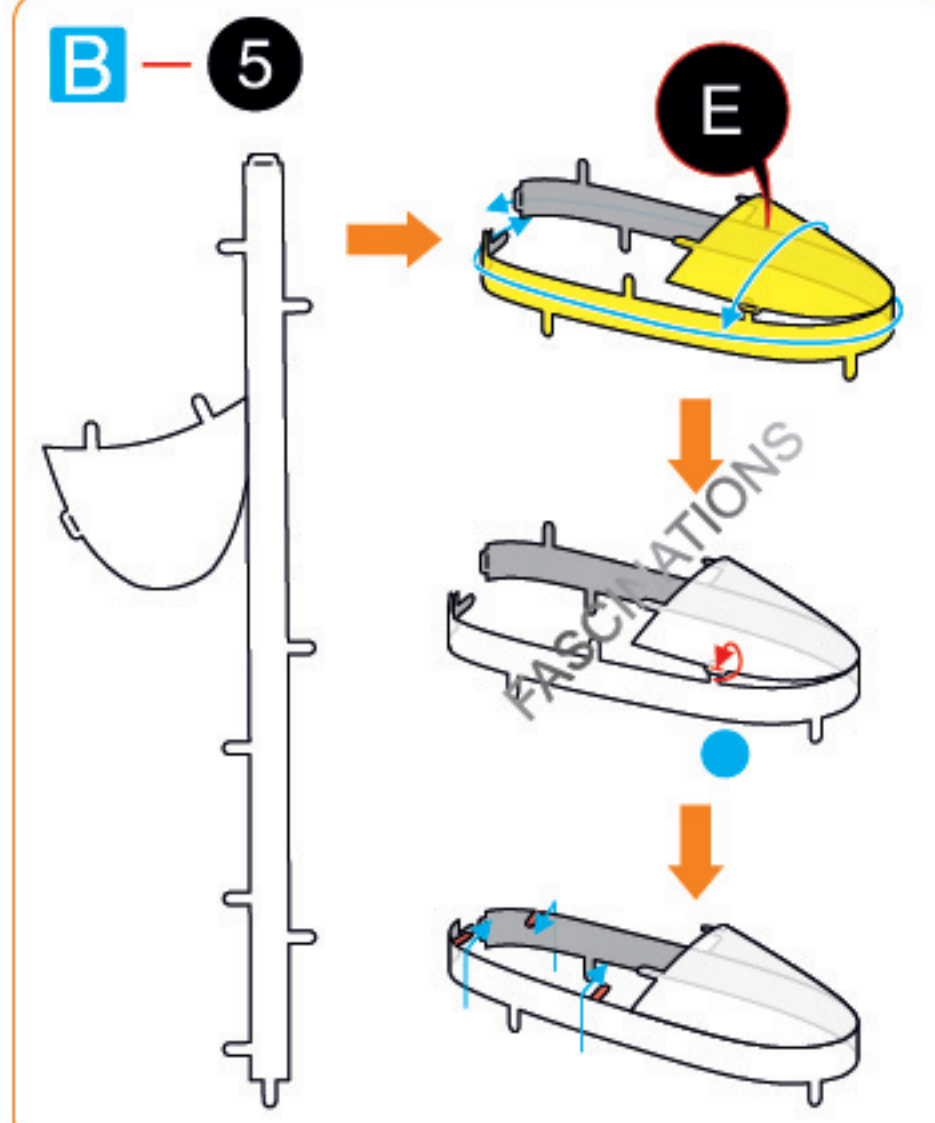


B - 4

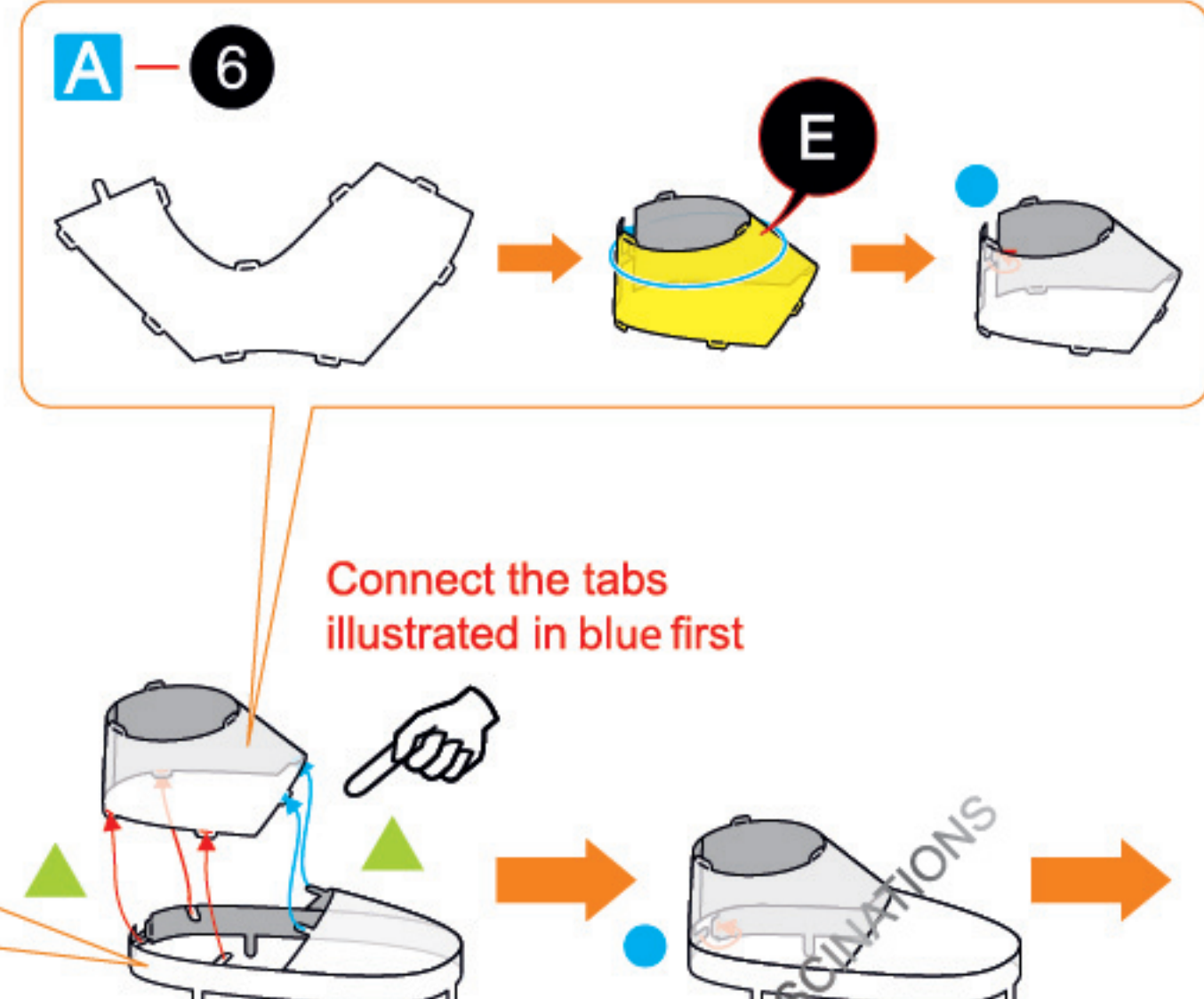


Step 2

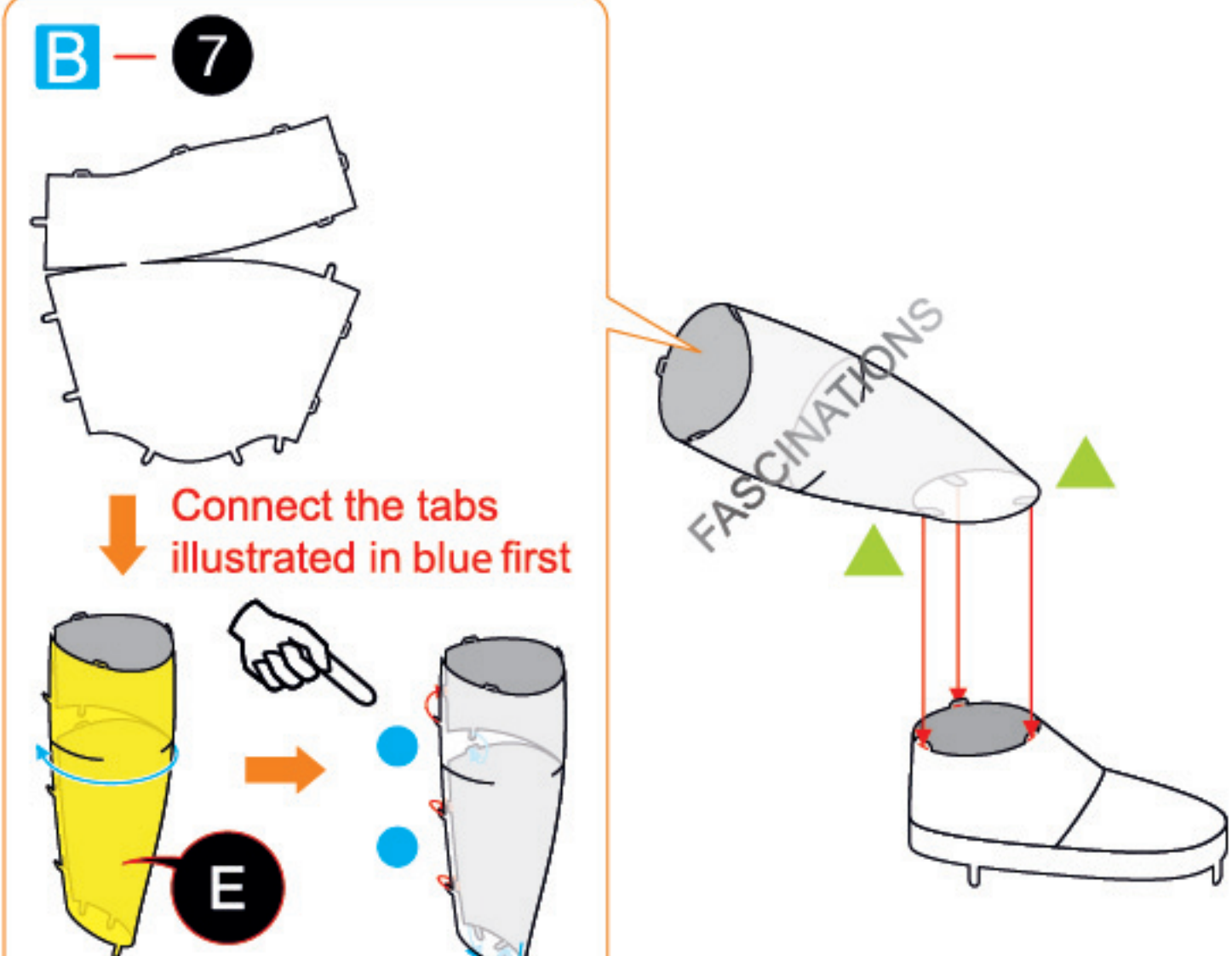
B - 5

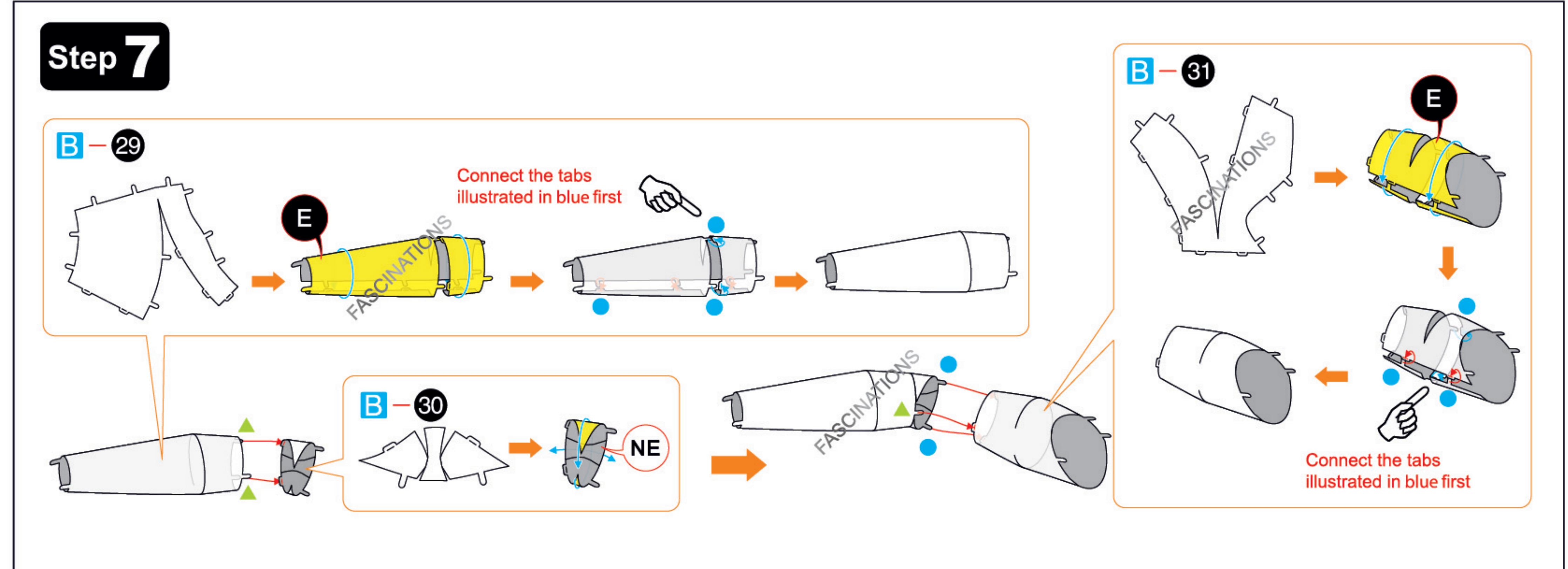
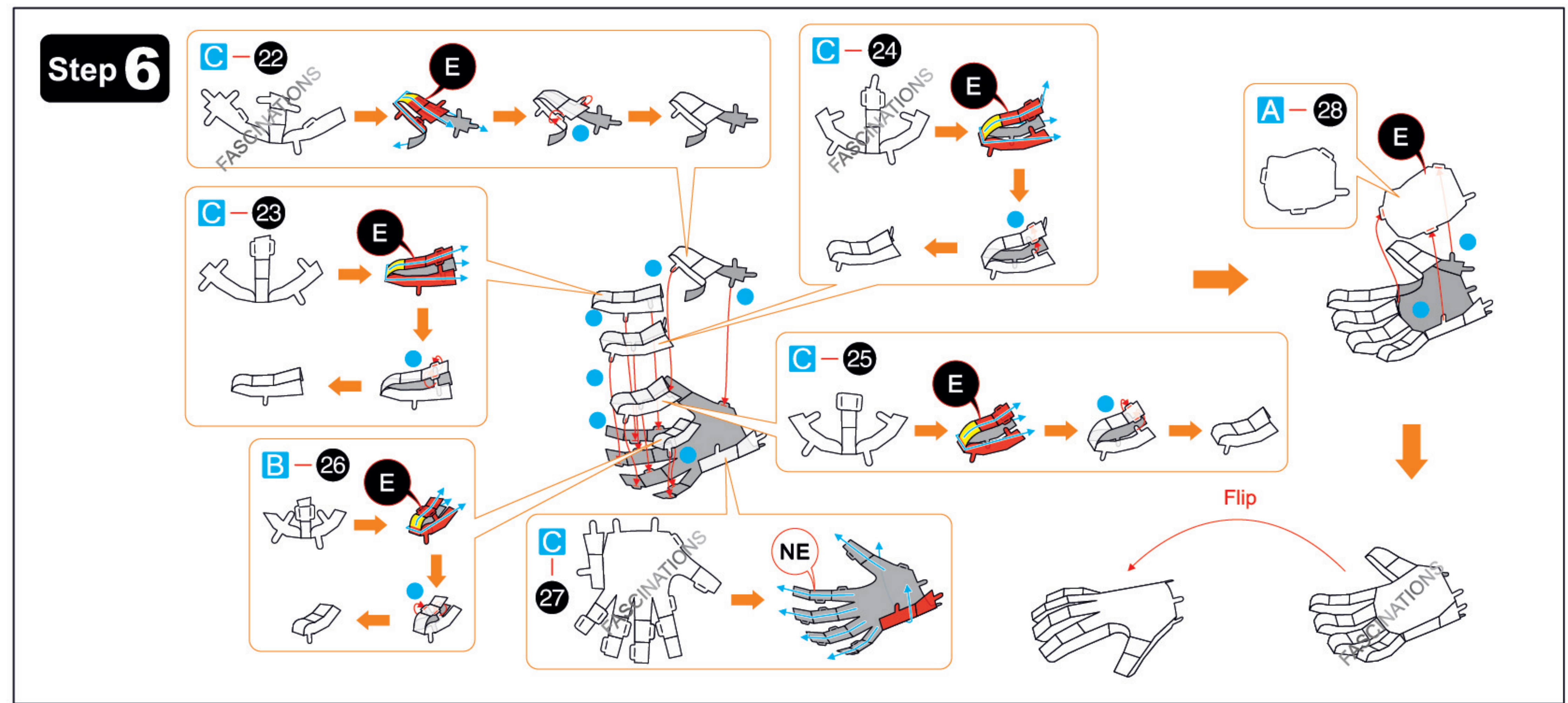
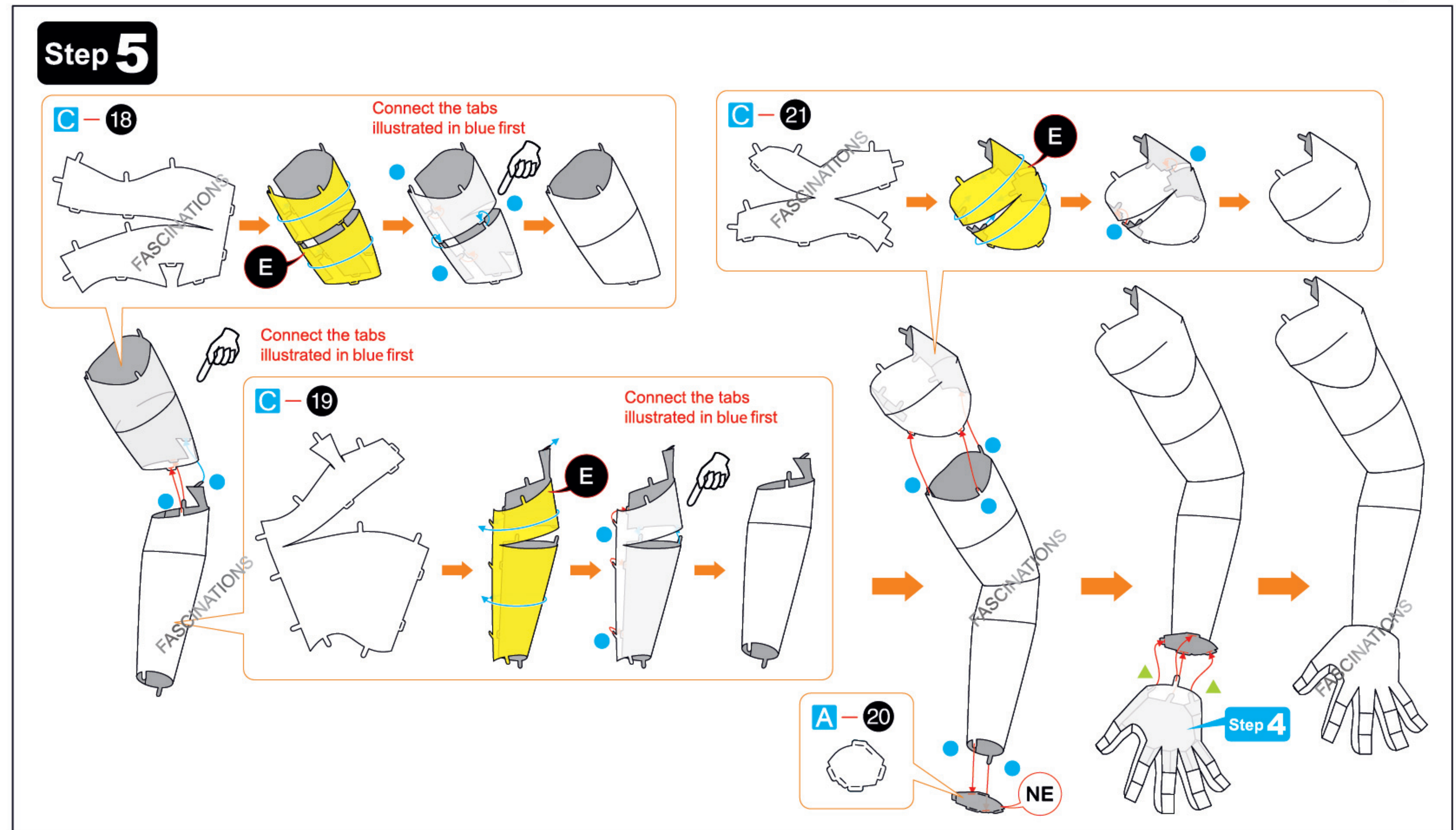
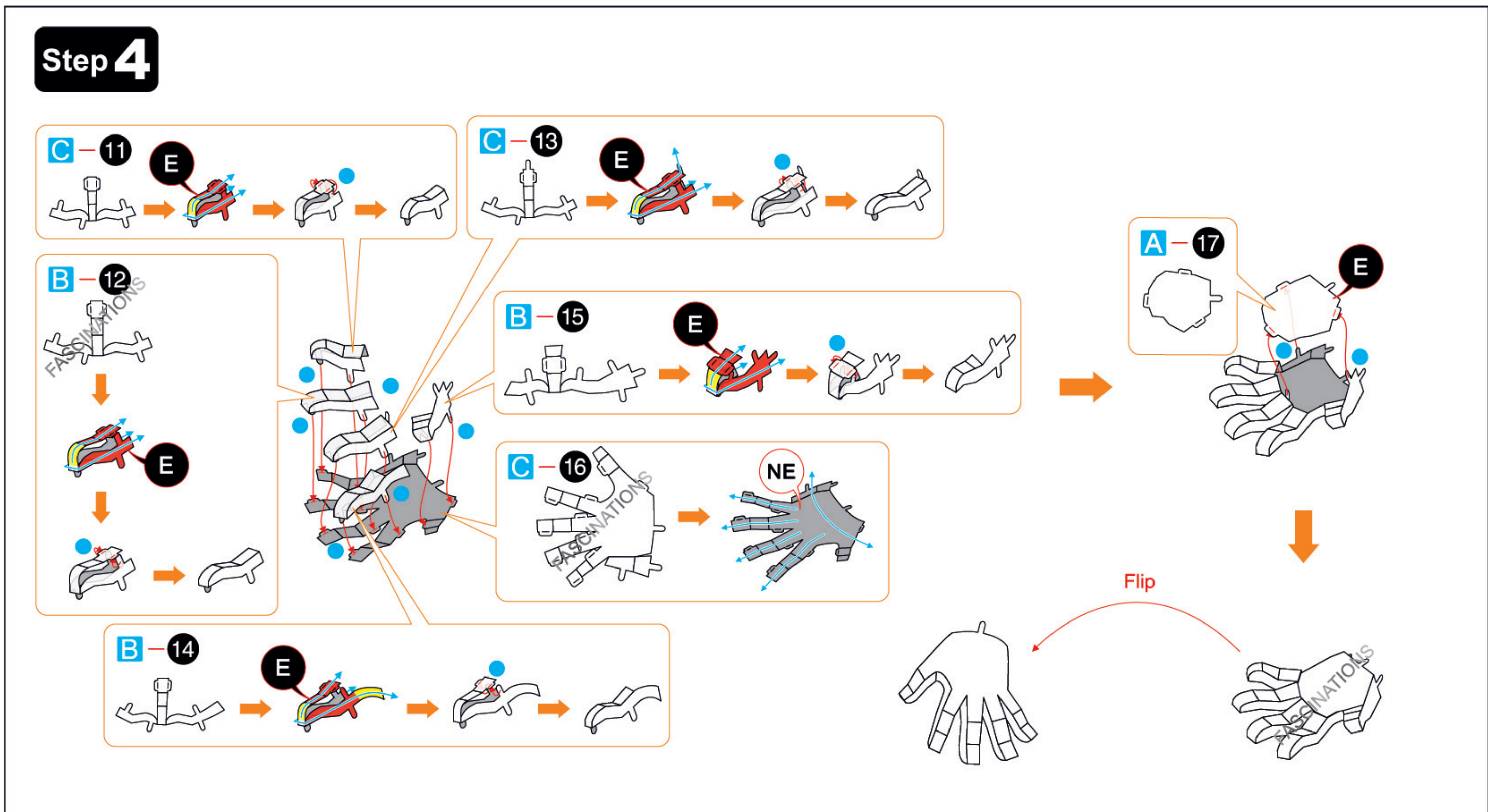
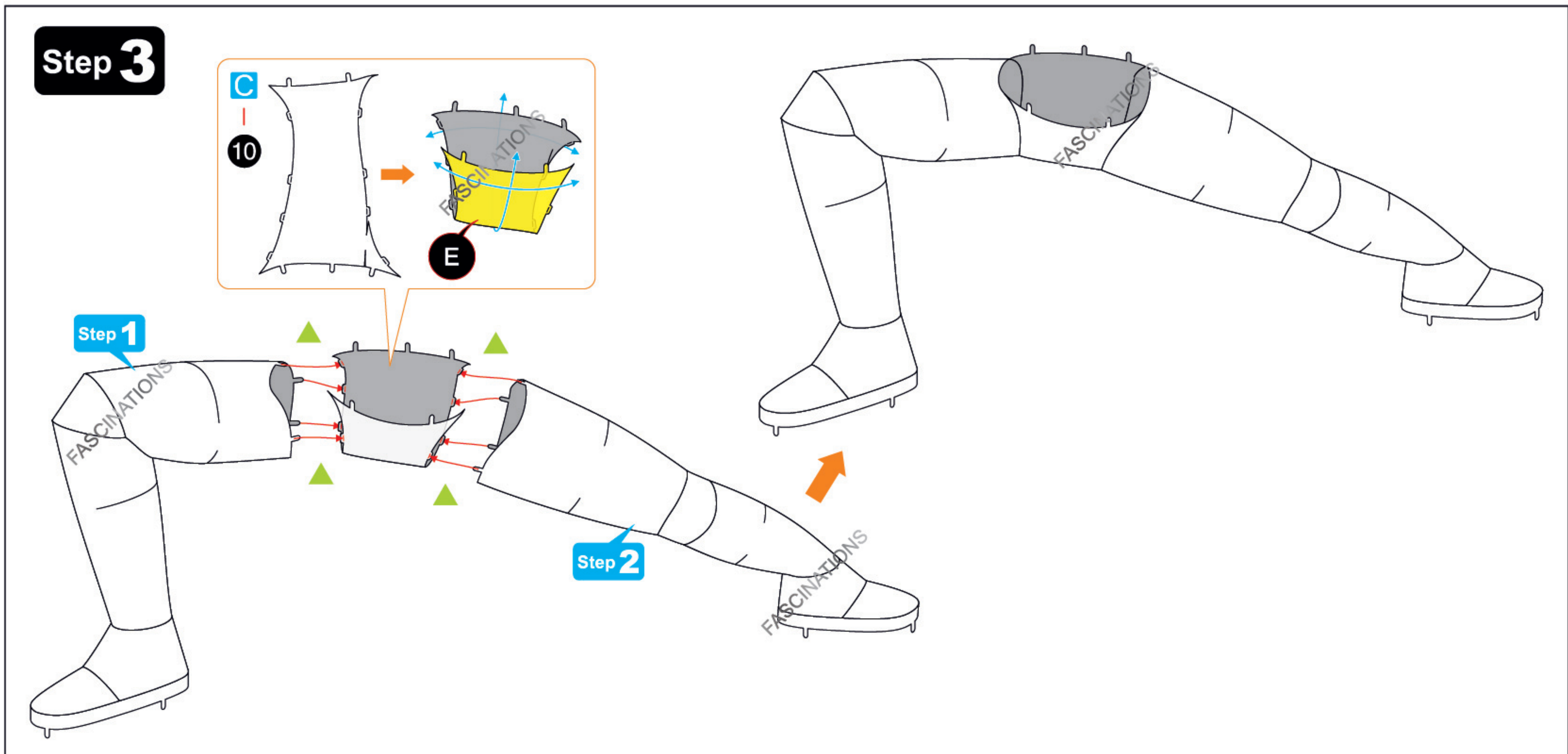
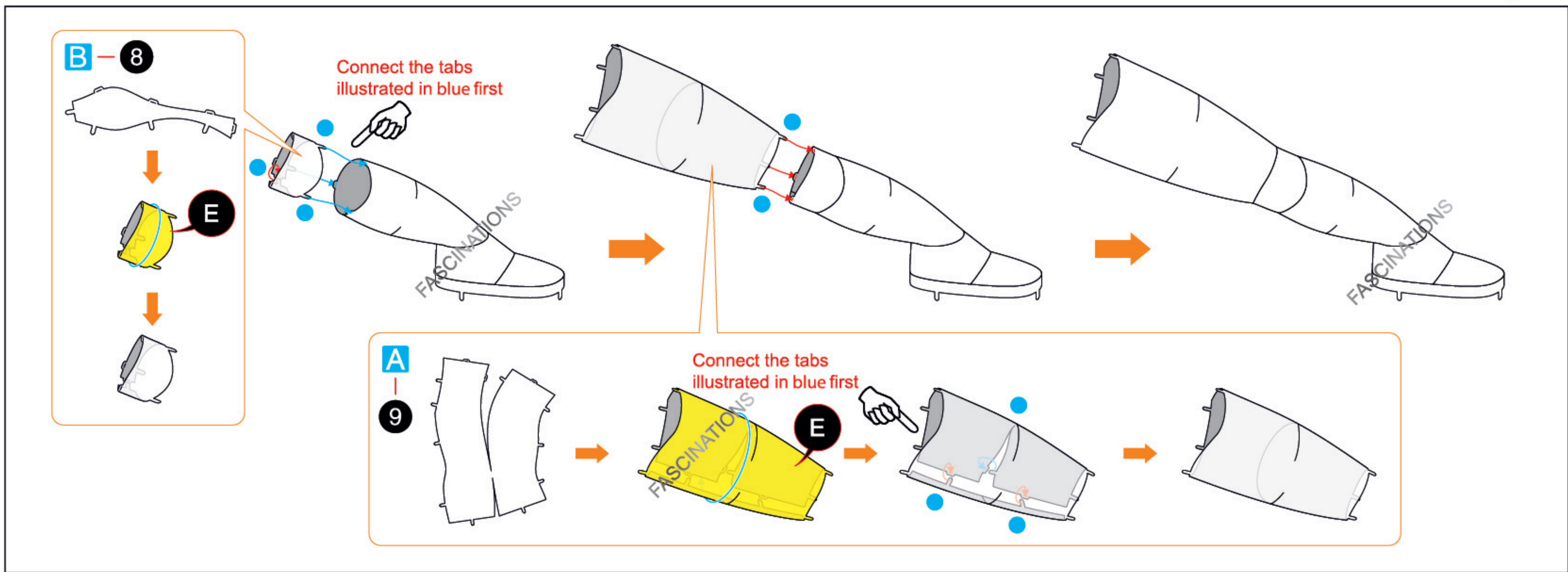


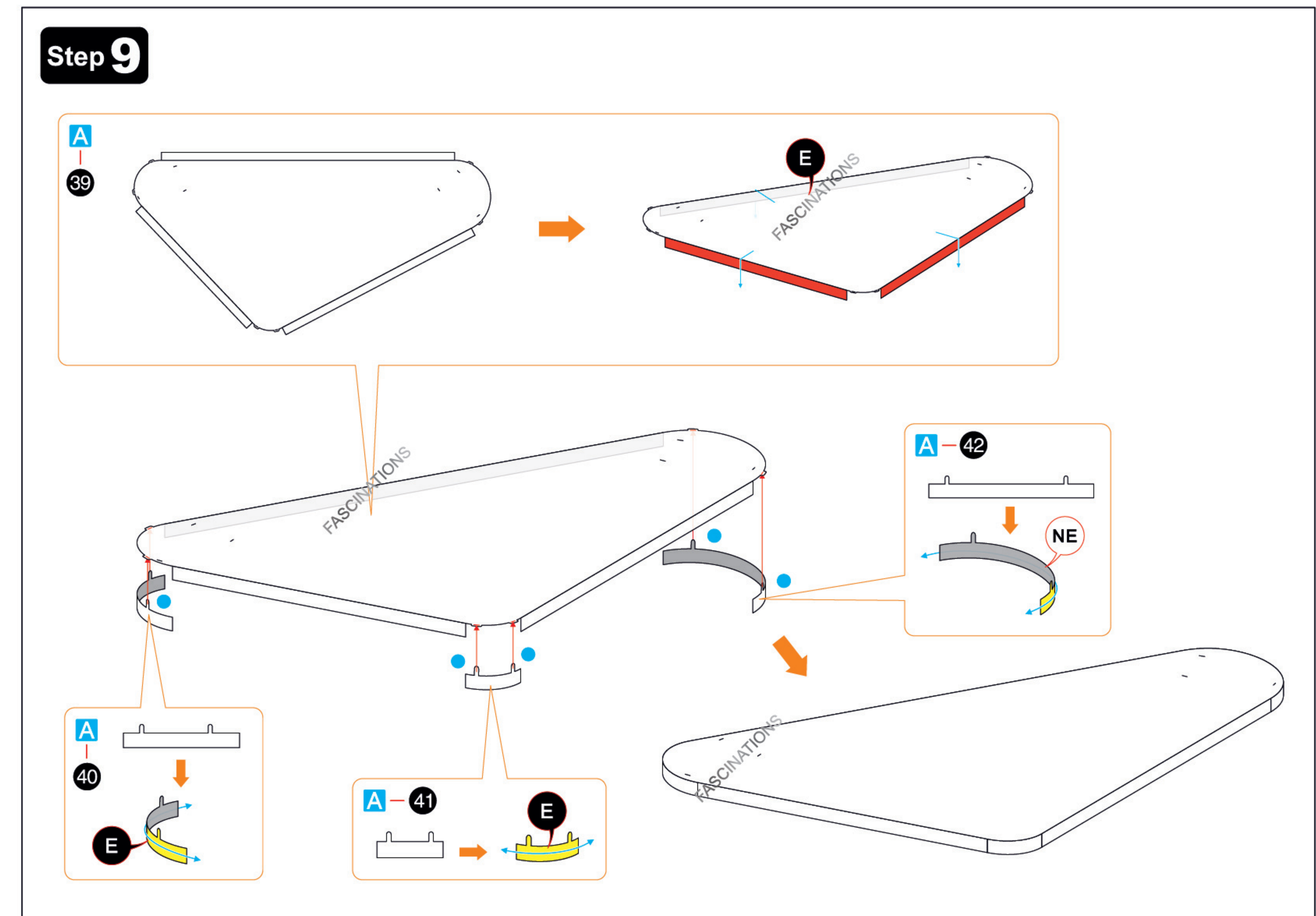
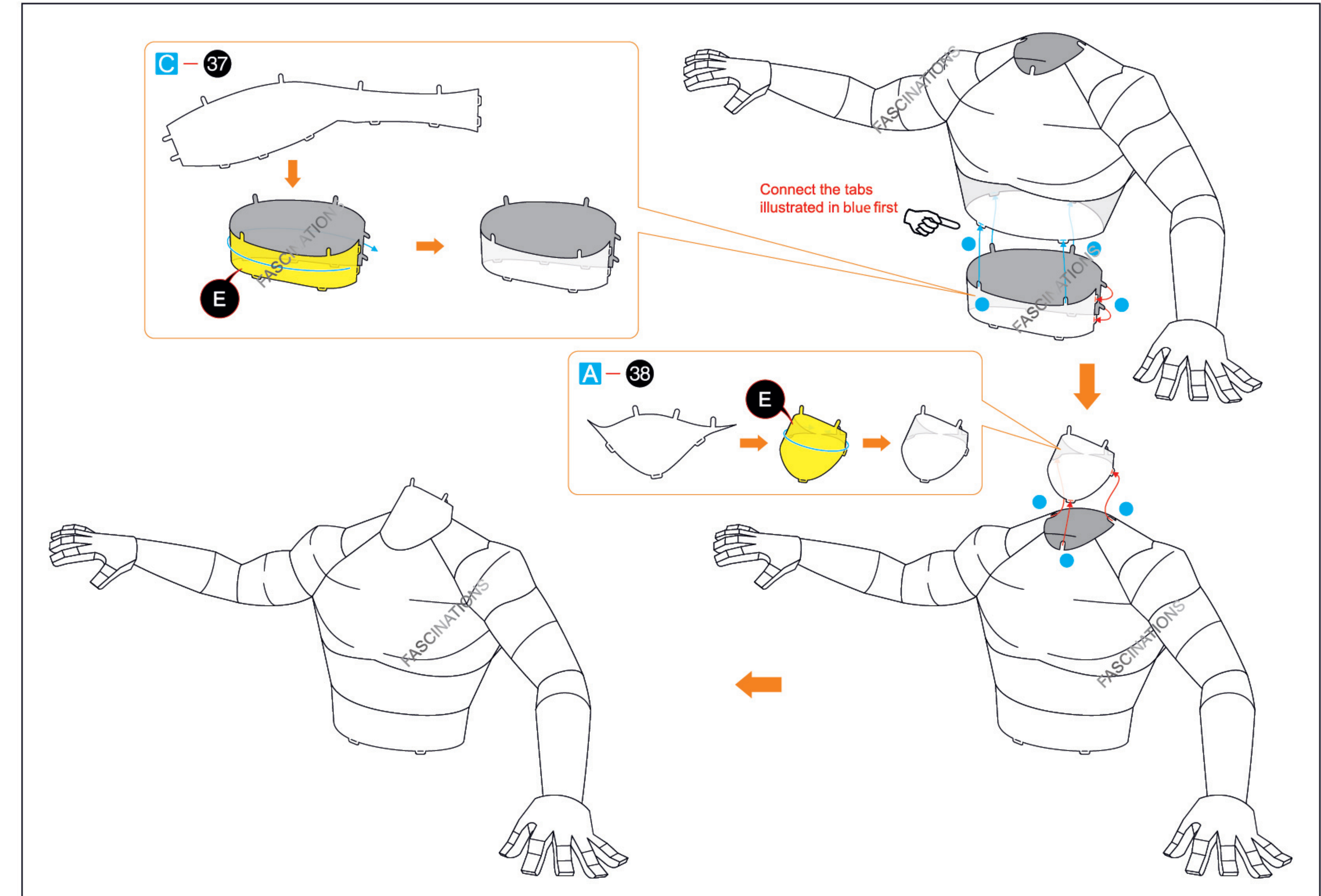
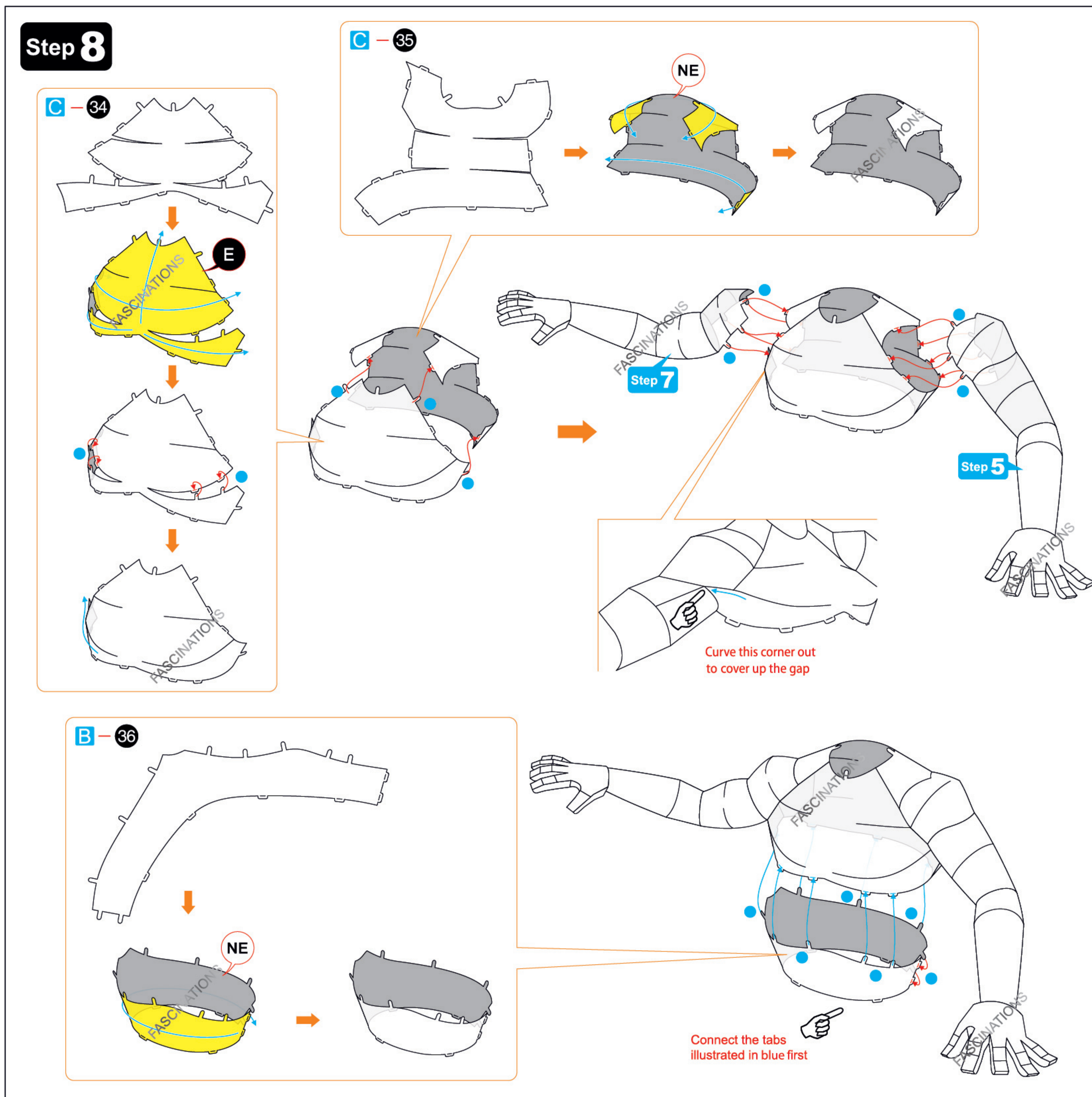
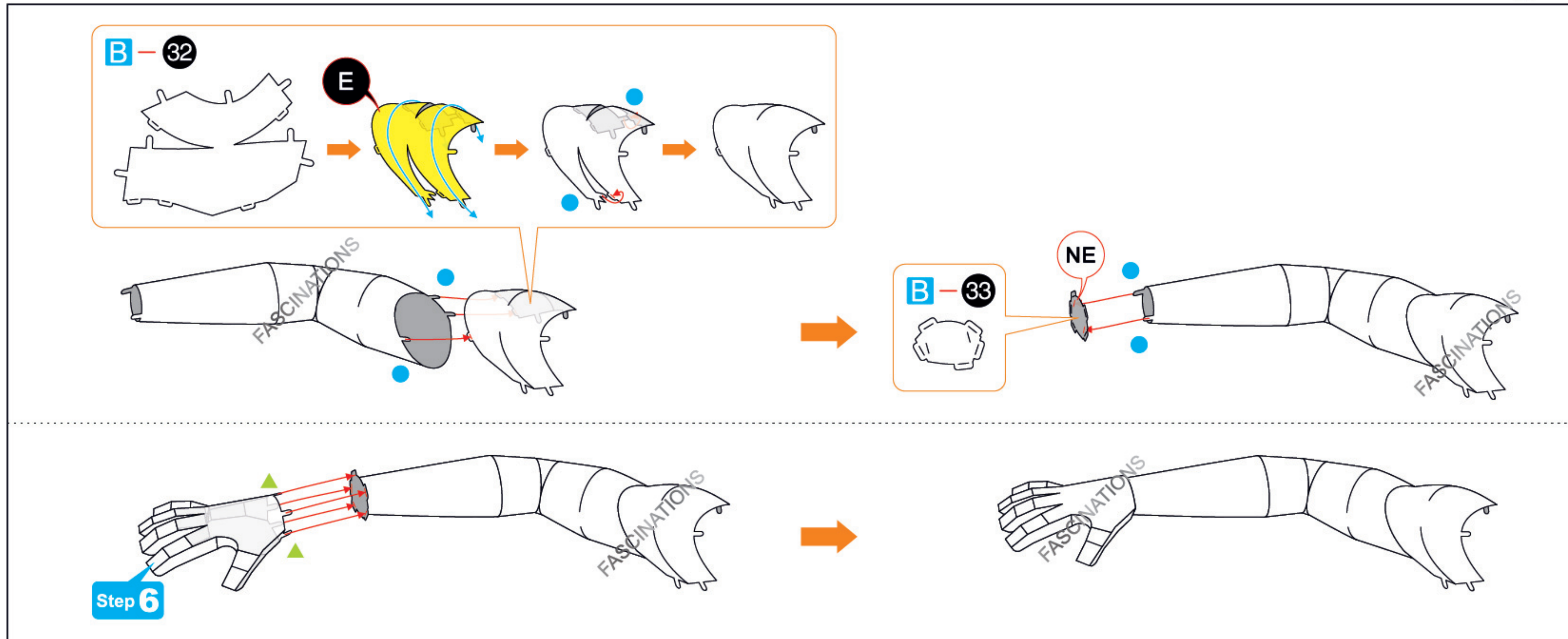
A - 6



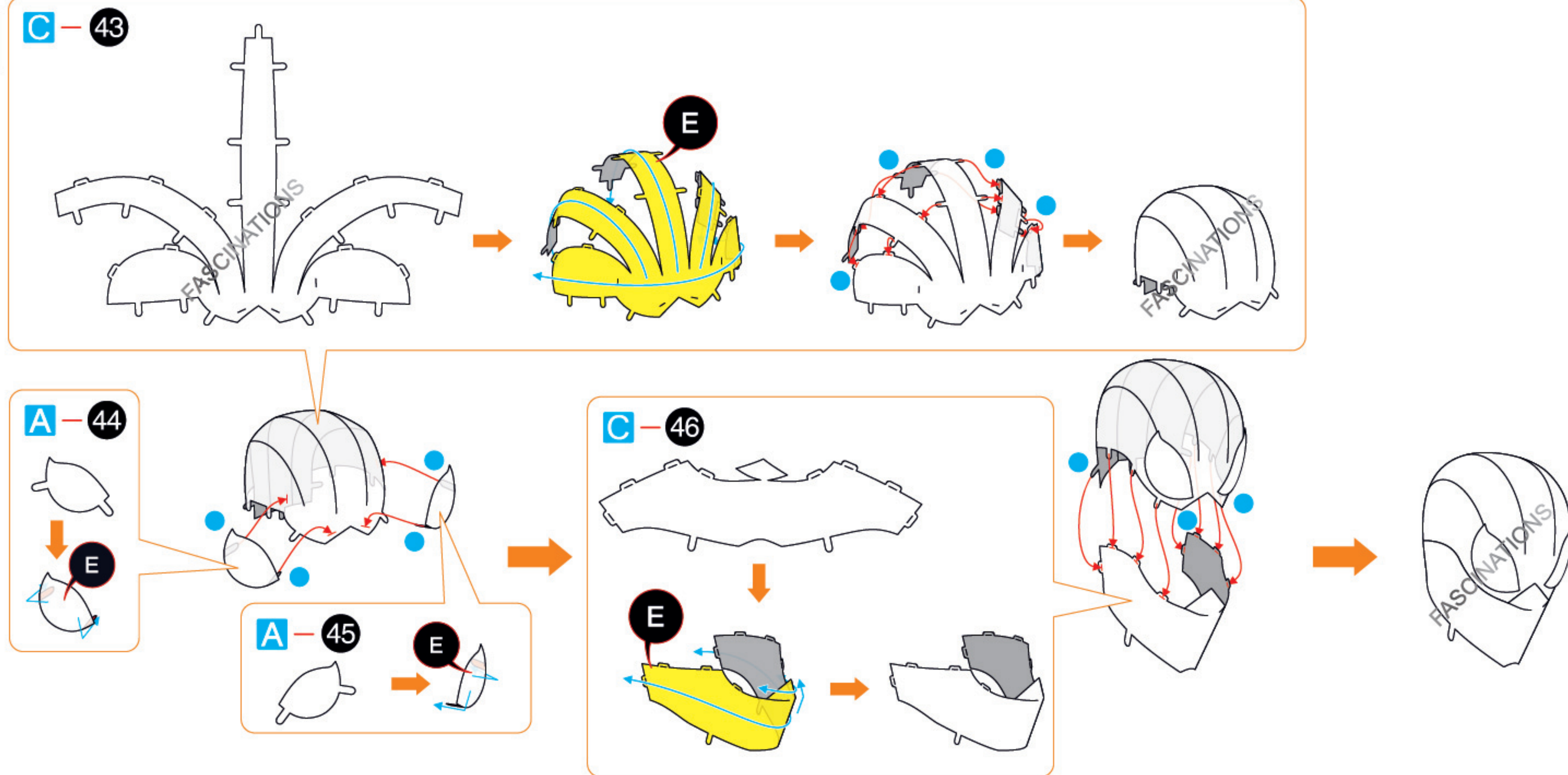
B - 7







Step 10



Step 11

