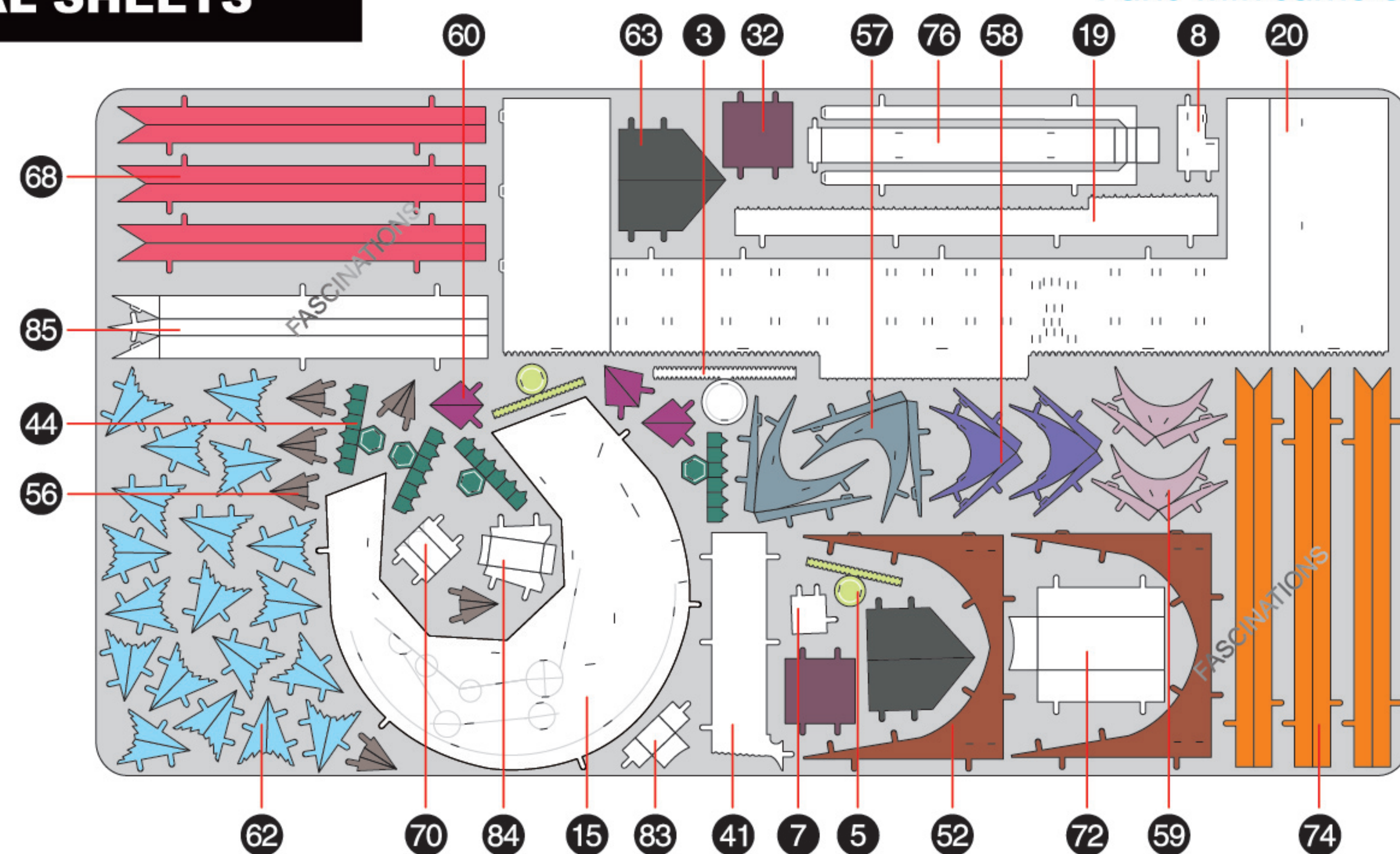


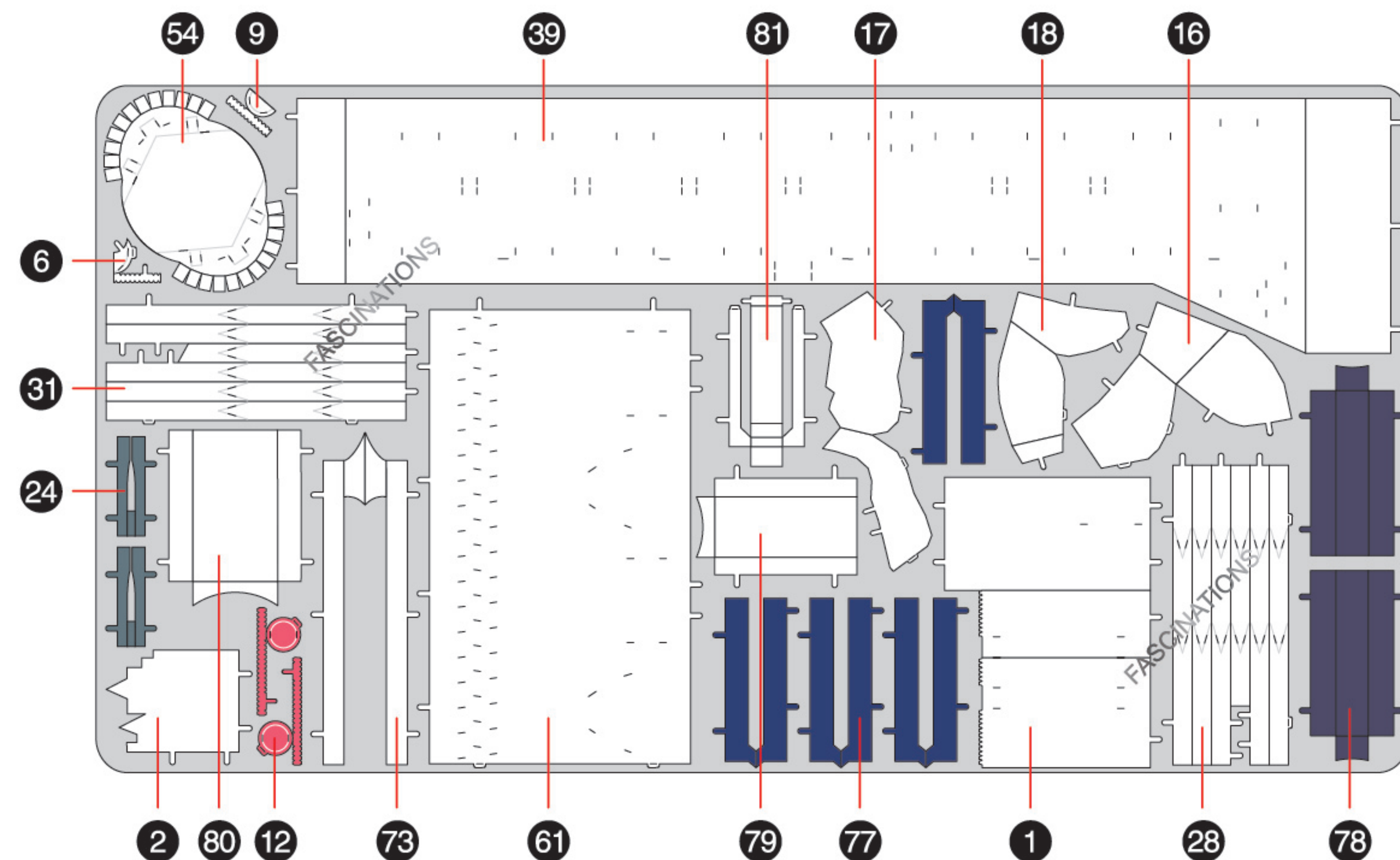
METAL SHEETS

Parts with same color are duplicates

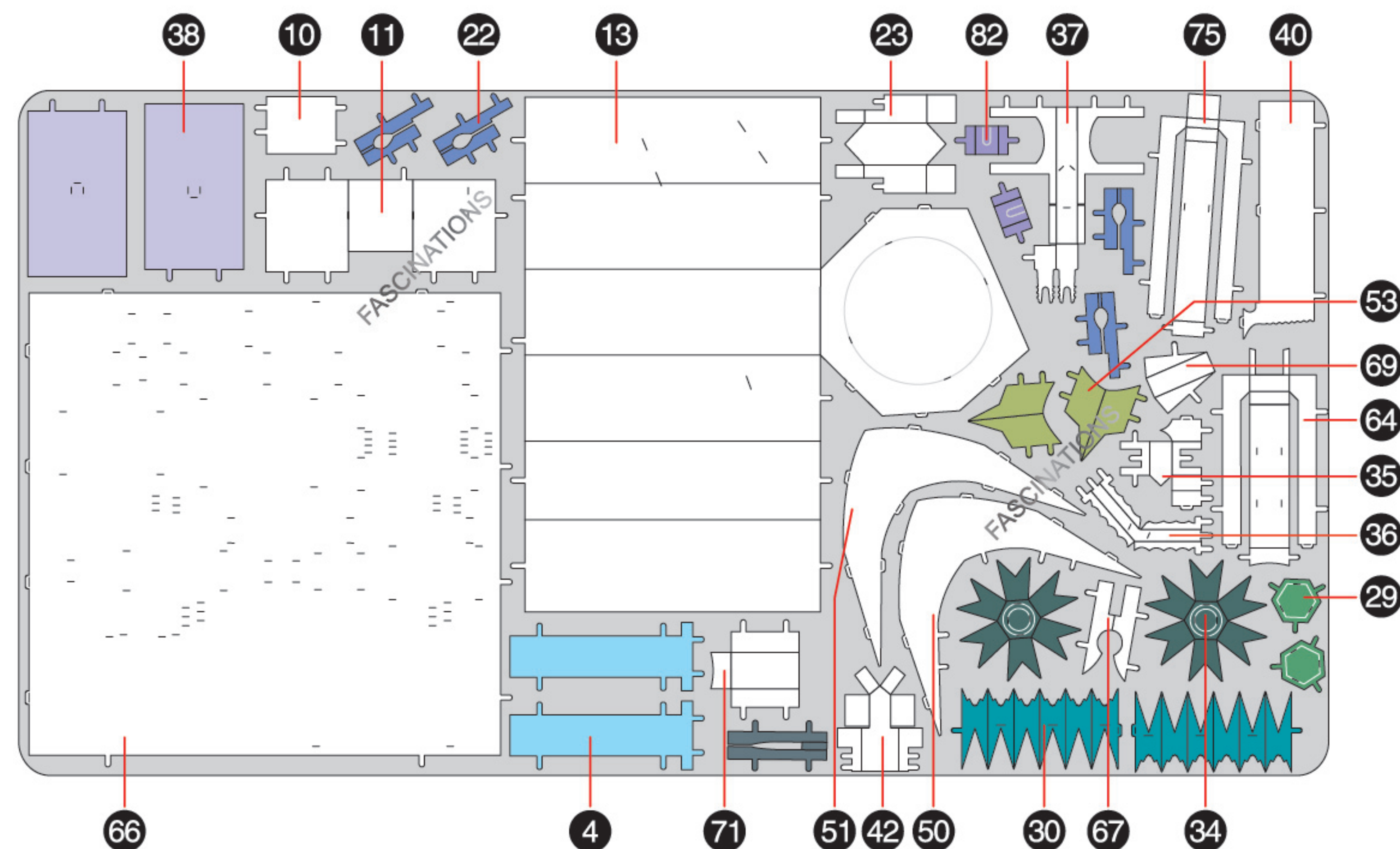
A



B



C



Metal Earth

360°
view

Premium Series



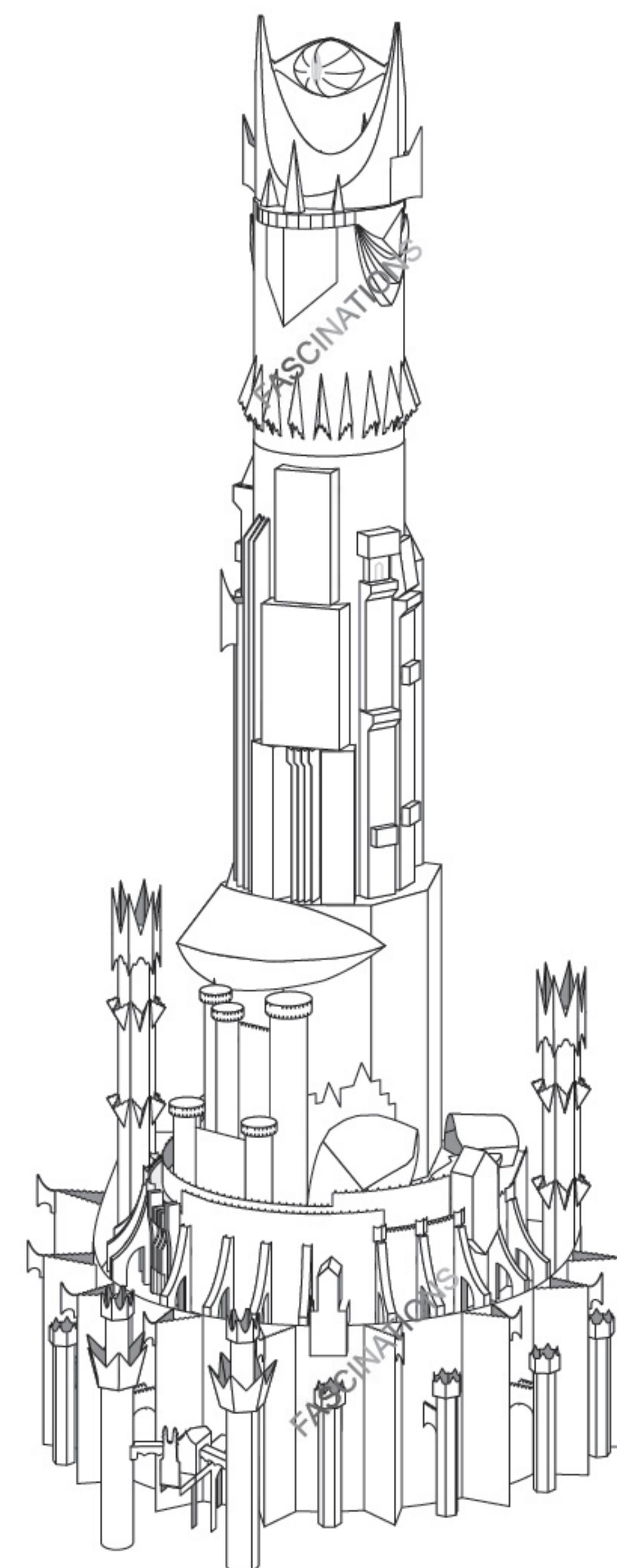
It is highly recommended that you visit
www.metalearth.com/360/ICX238
to see the completed model before
assembling your own



NEW LINE CINEMA
A WARNER MEDIA COMPANY
© New Line Productions, Inc. All rights reserved. THE LORD OF THE RINGS, THE FELLOWSHIP OF THE RING, THE LORD OF THE RINGS, THE TWO TOWERS, THE LORD OF THE RINGS, THE RETURN OF THE KING and the names of the characters, items, events and places therein are ™ of The Saul Zaentz Company d/b/a Middle-earth Enterprises under license to New Line Productions, Inc. (s22)

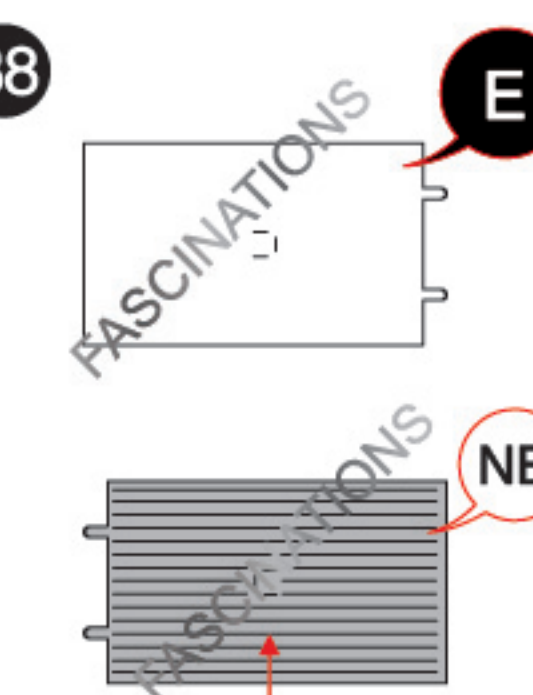
ICX238

BARAD-DUR™

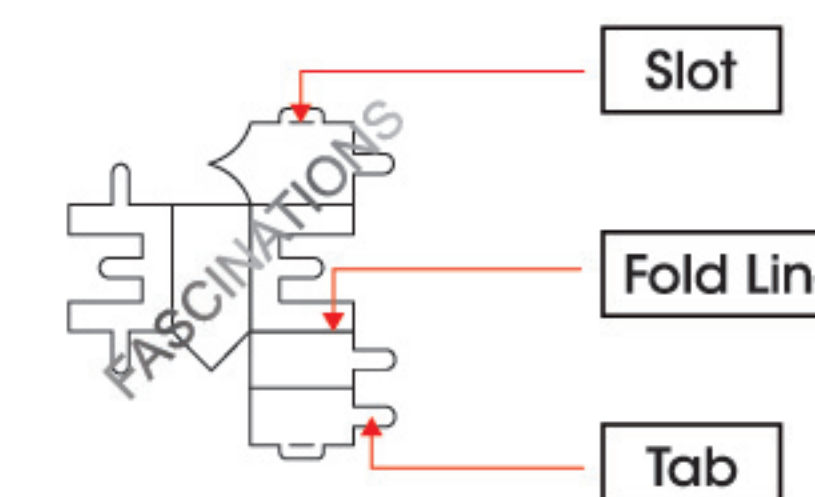


TO CREATE THE BEST CONNECTIONS

C - 38



C - 35



Consider these engraved stripes as supporting features for the bend

Legends:

- Engraved/ Color side
- Non - engraved/ Silver side
- Attention point
- Insert tab and bend 90 degrees
- Insert tab and twist 90 degrees

Assembly tip:

If needed, slightly twist tabs to hold parts together then untwist and bend them down for a nice finish.

- Yellow areas should be curled
- Red areas should be folded



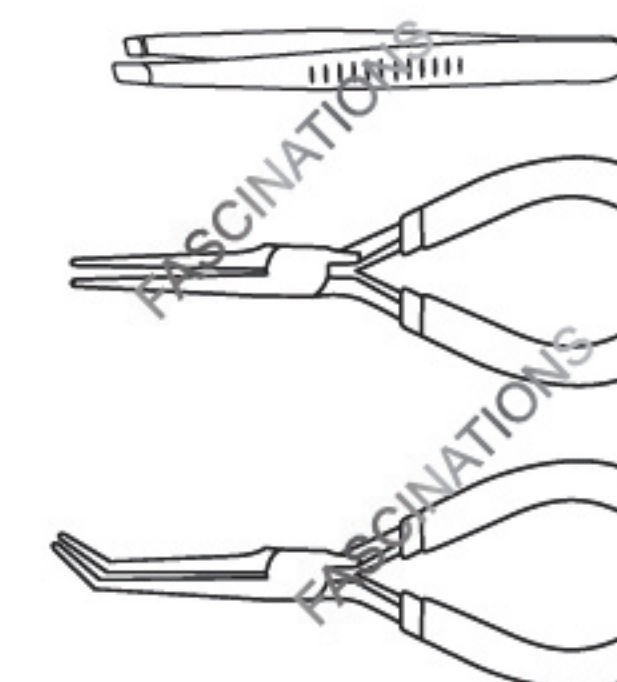
In order to avoid possible injury from sharp edges, please carefully discard the metal sheets after parts have been removed.

Recommended tools:

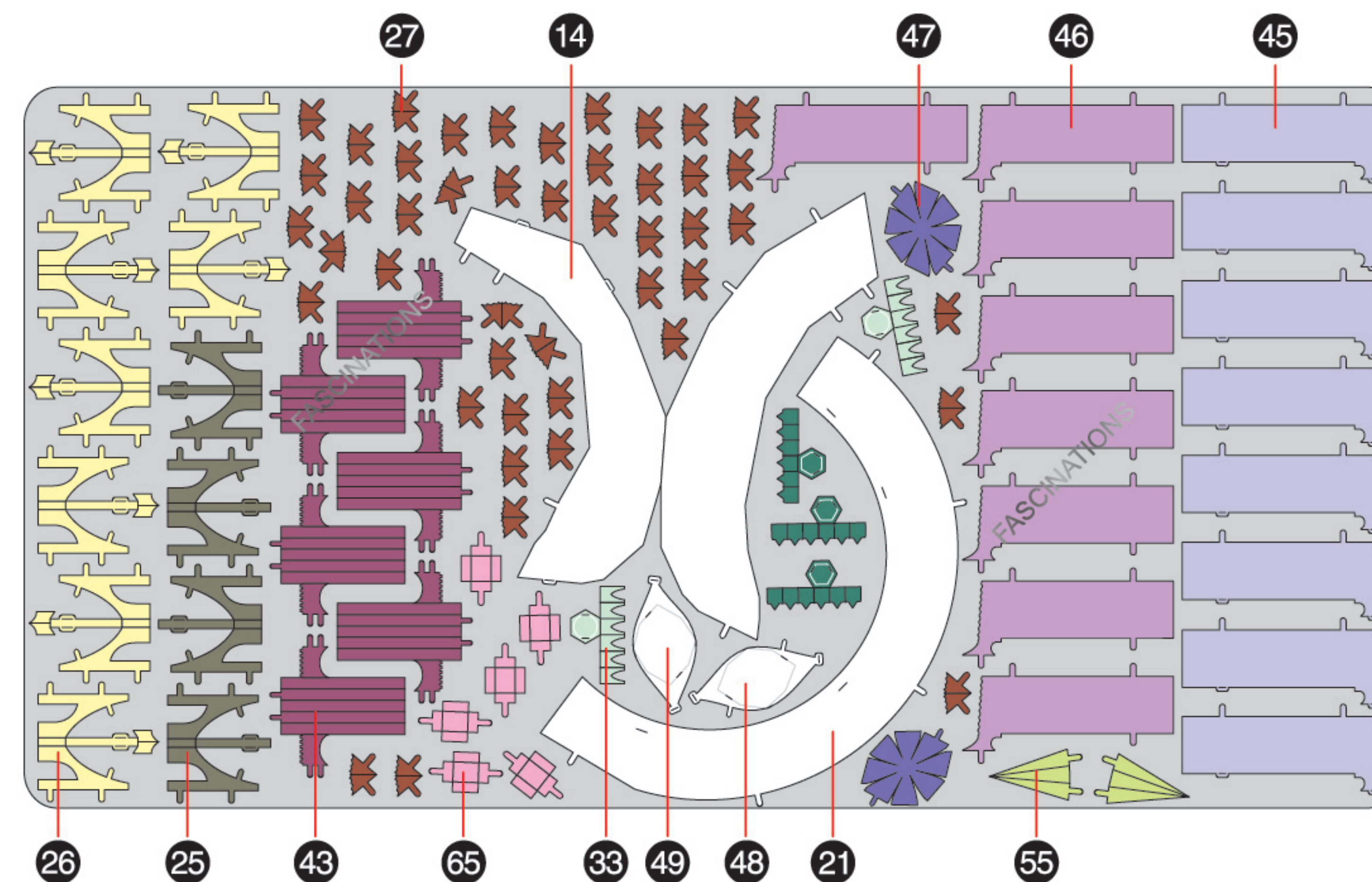
- Wire cutters: helpful for taking parts from the metal sheets.



- Tweezers or needle nose pliers: helpful for folding parts, bending and twisting tabs.

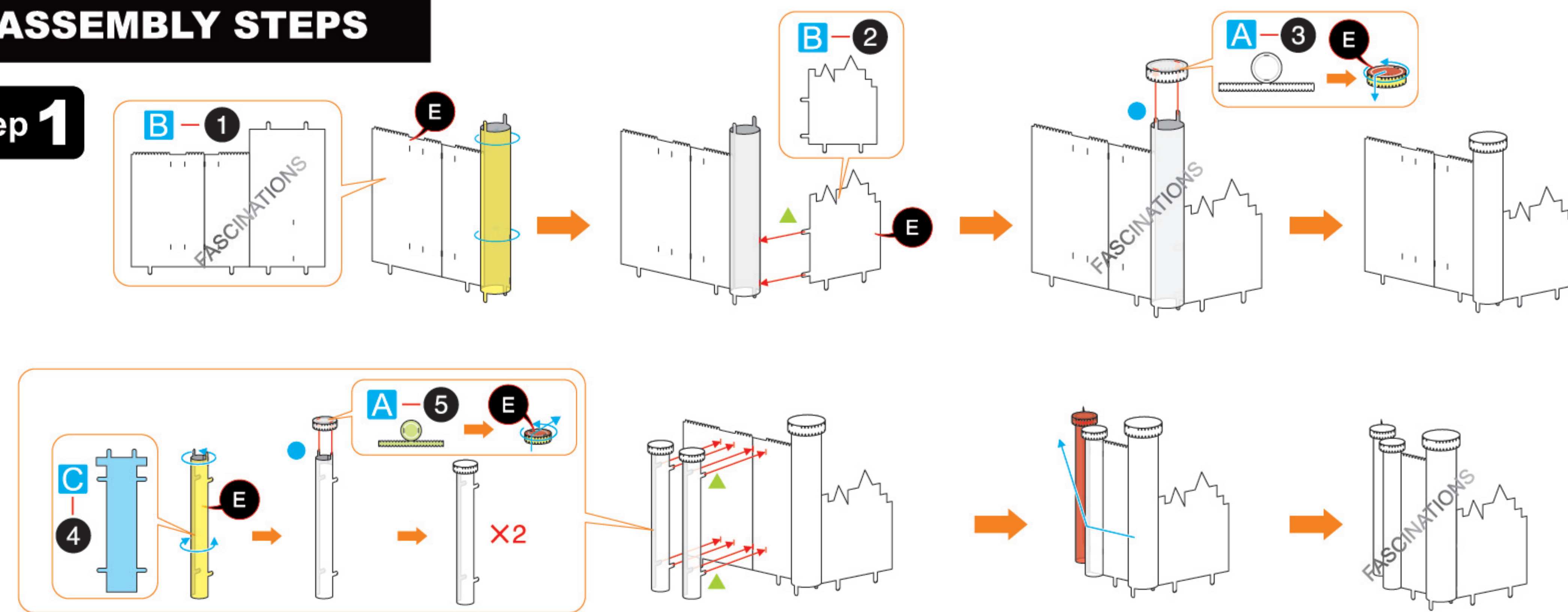


D

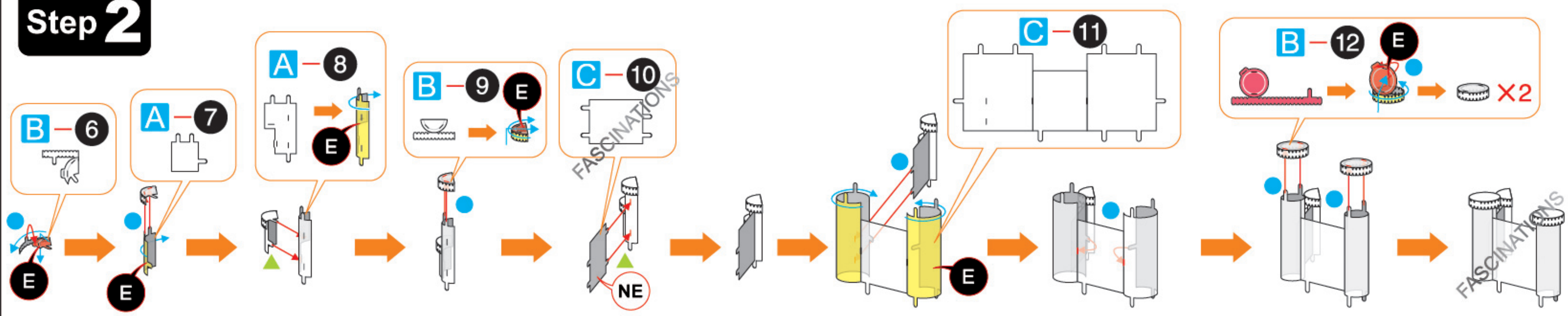


ASSEMBLY STEPS

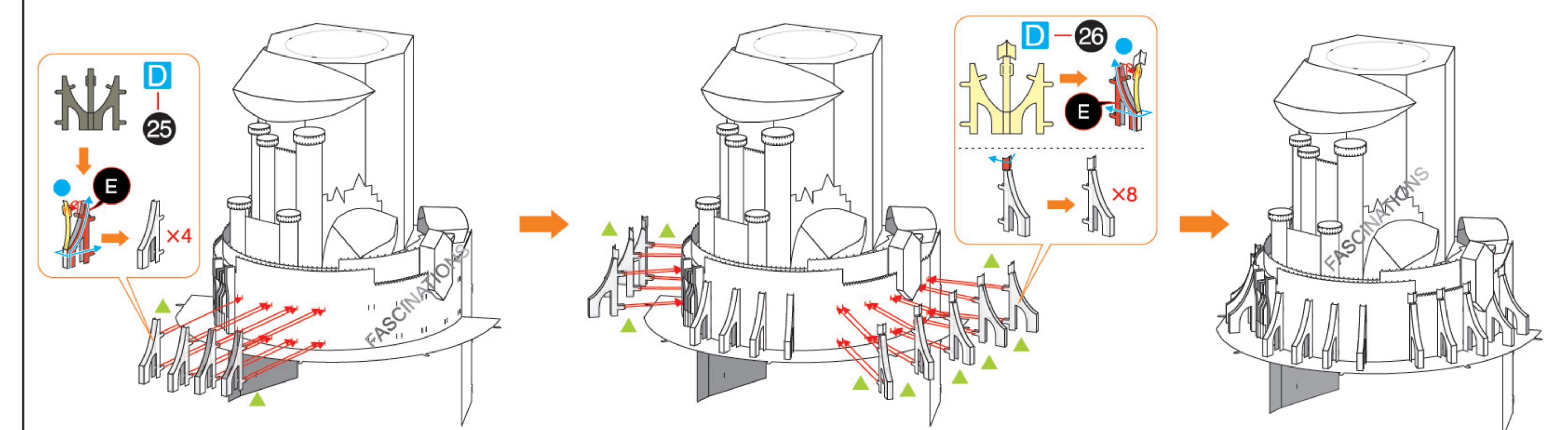
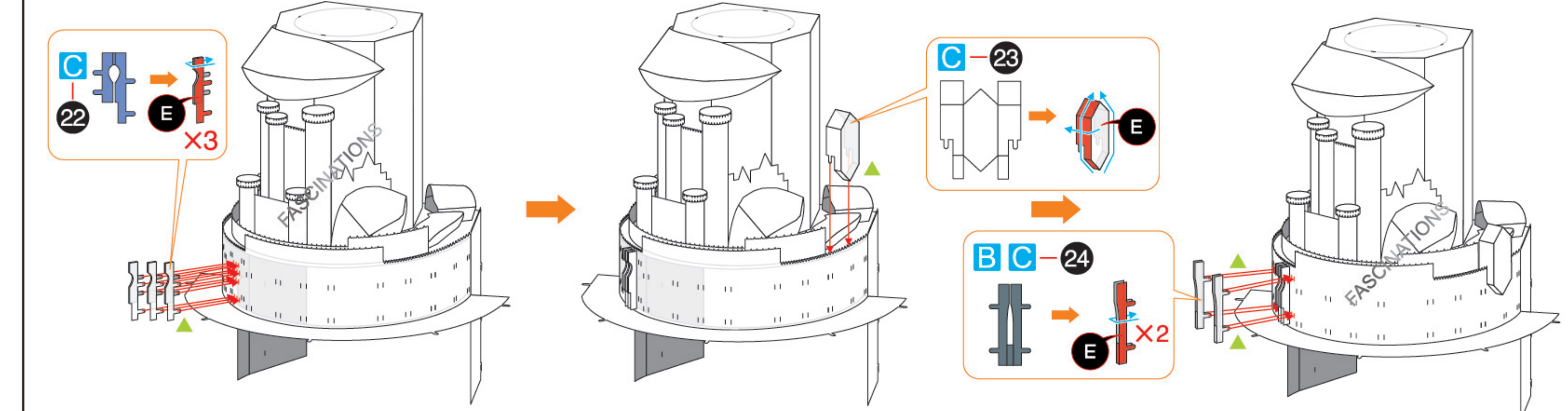
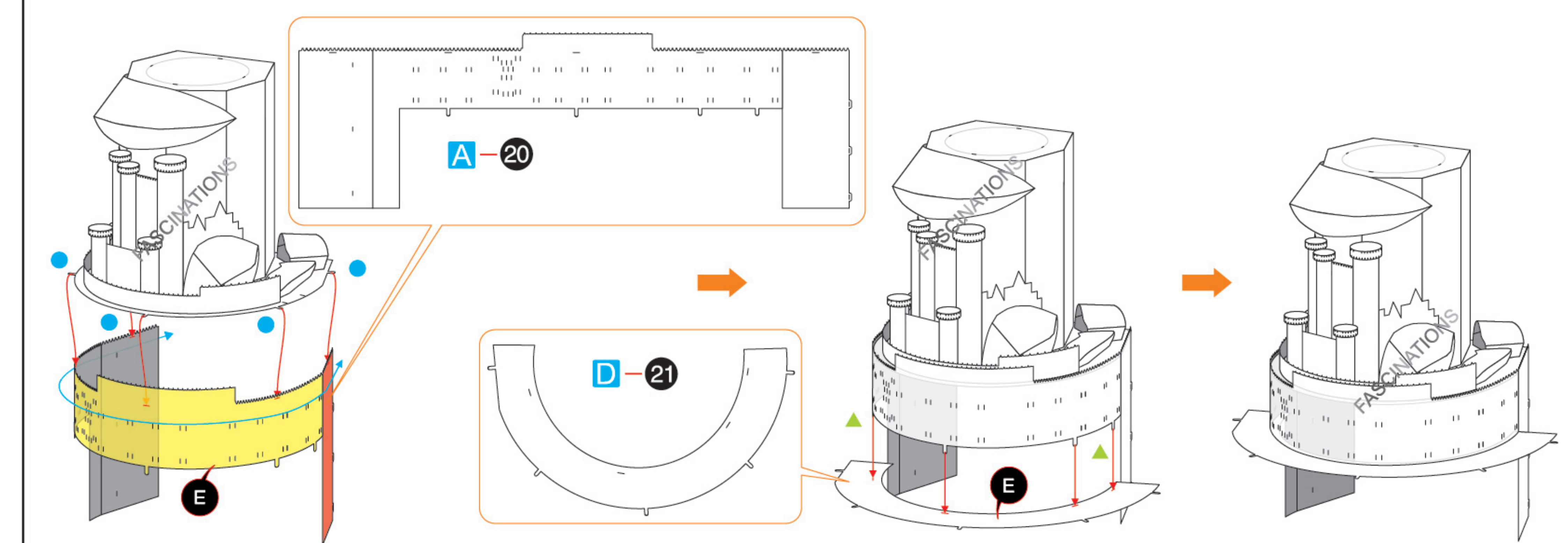
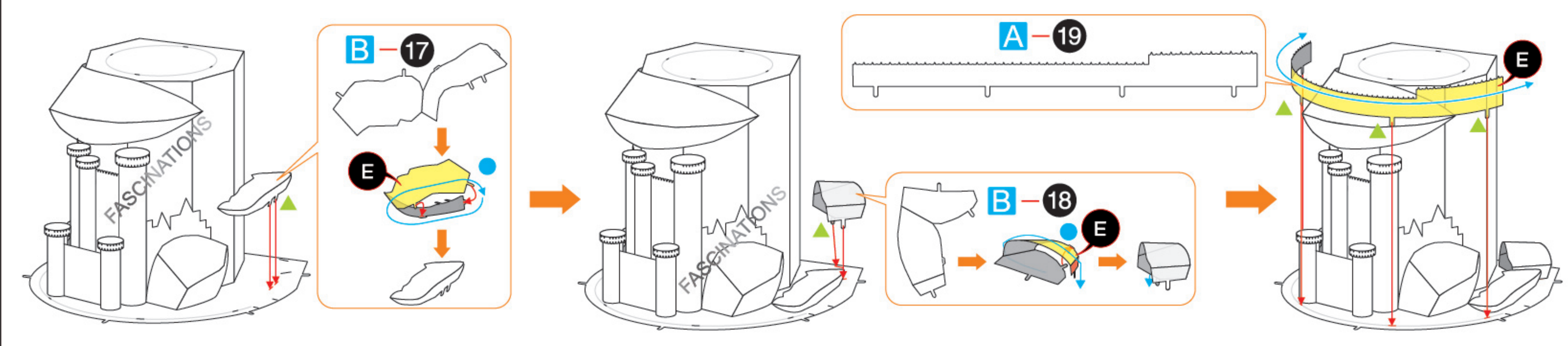
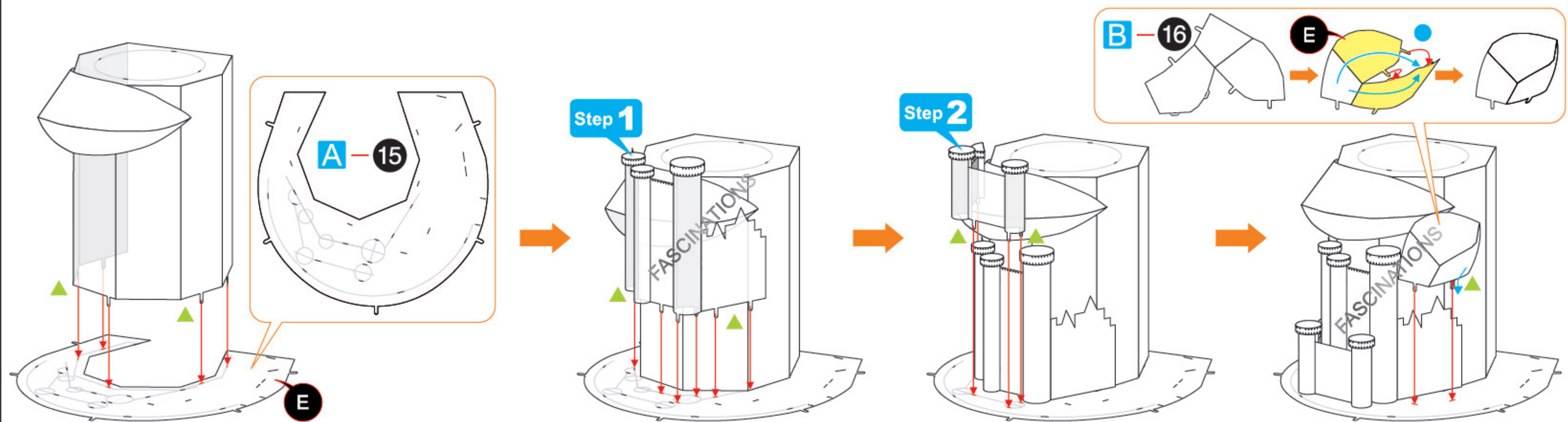
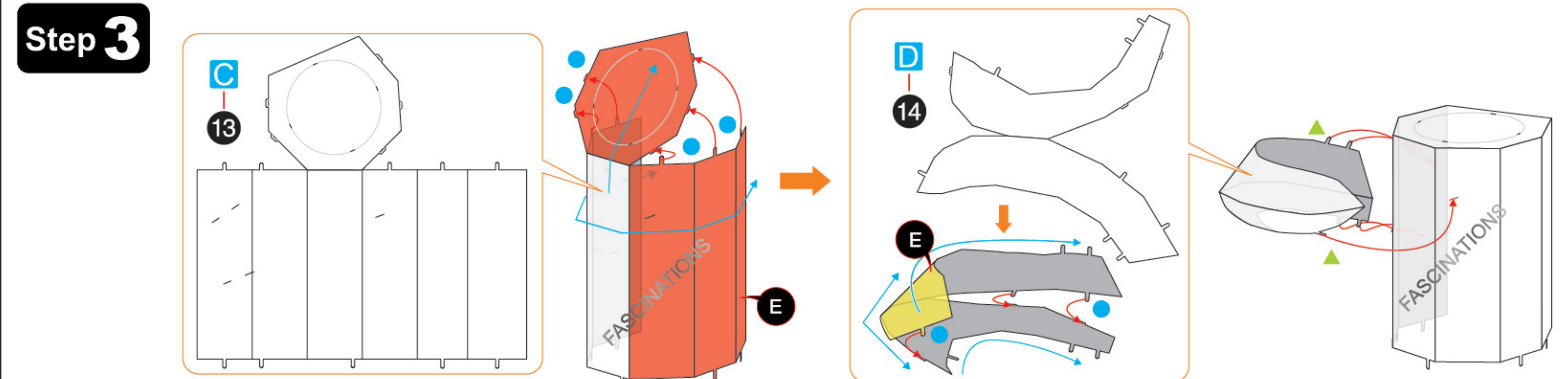
Step 1



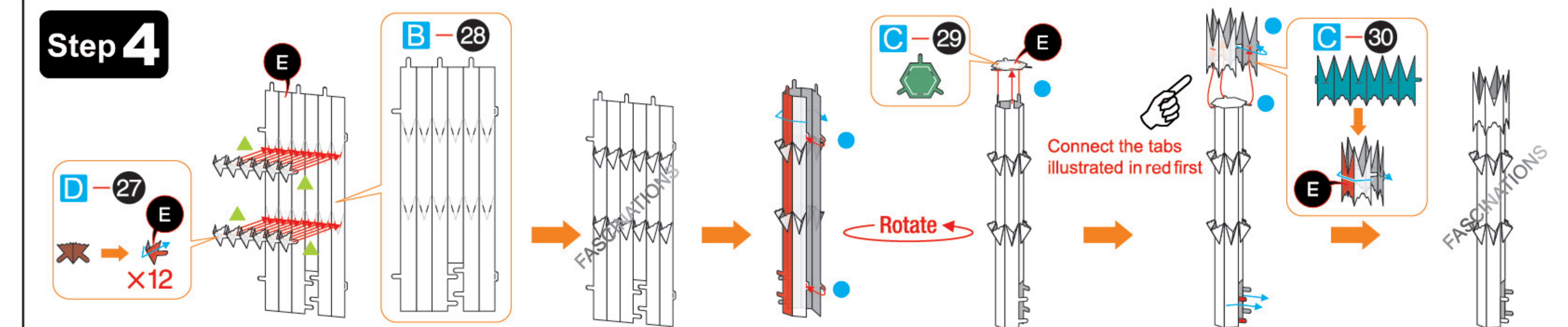
Step 2



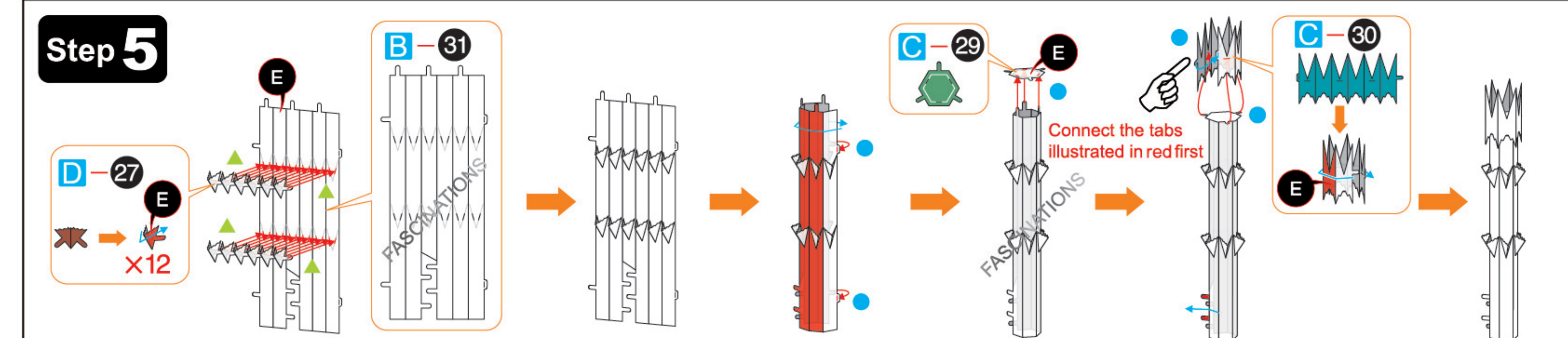
Step 3



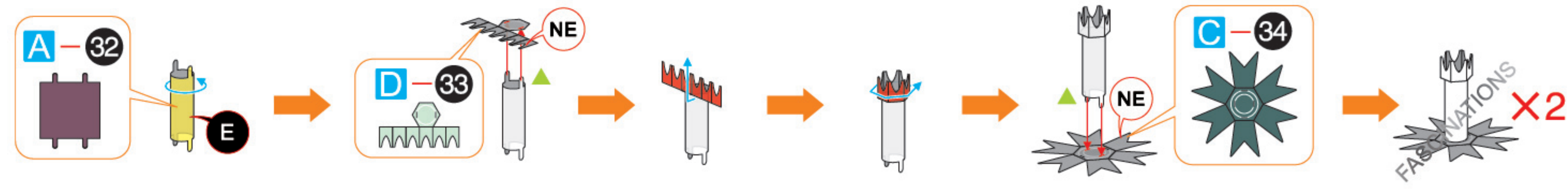
Step 4



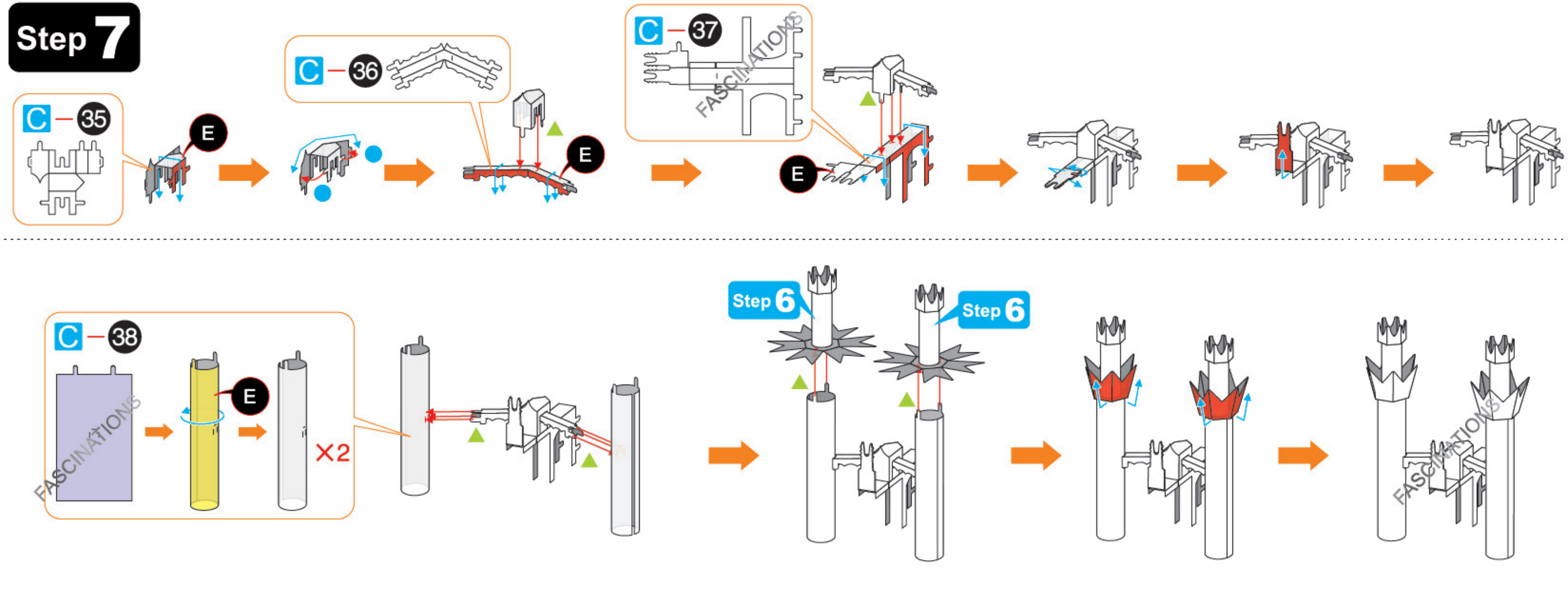
Step 5



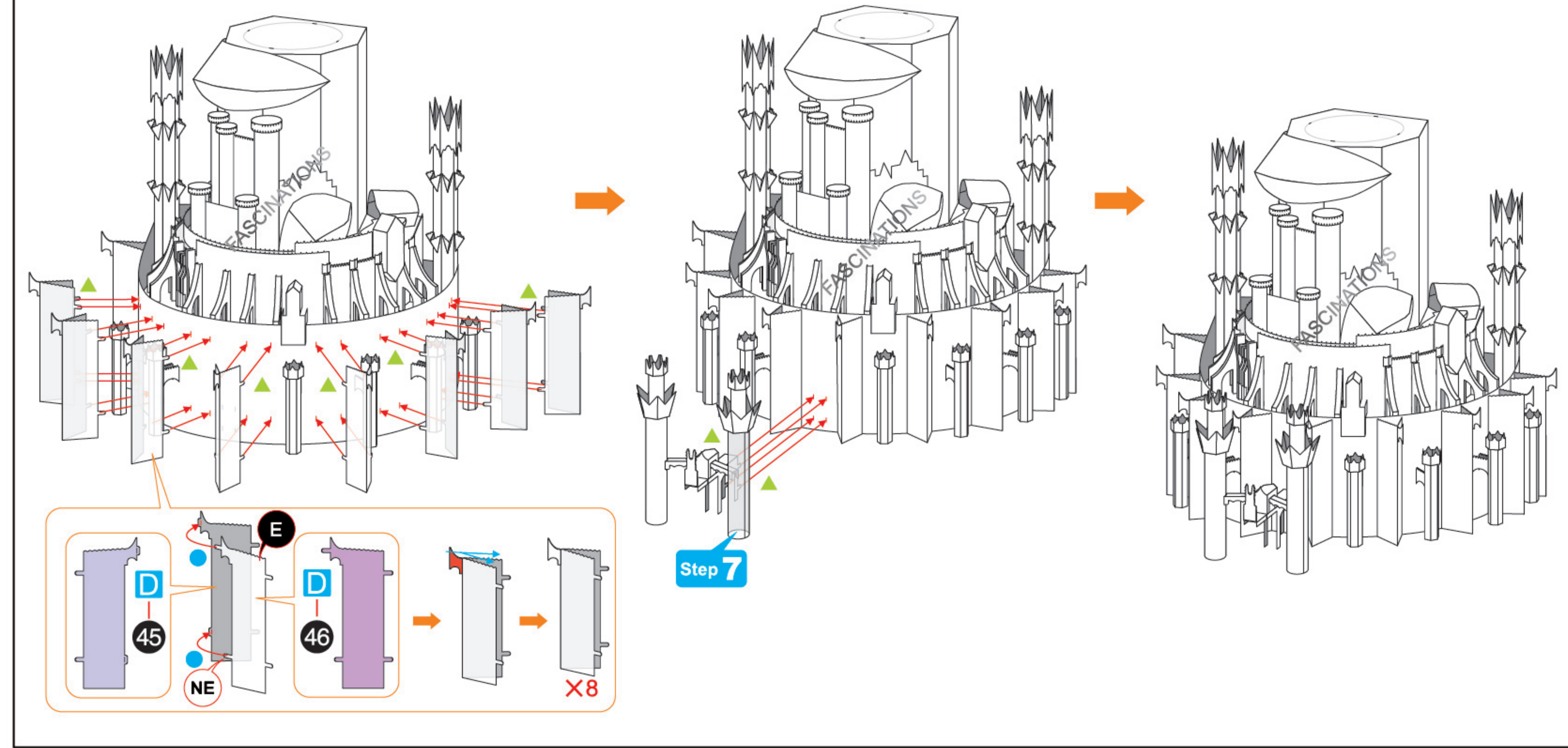
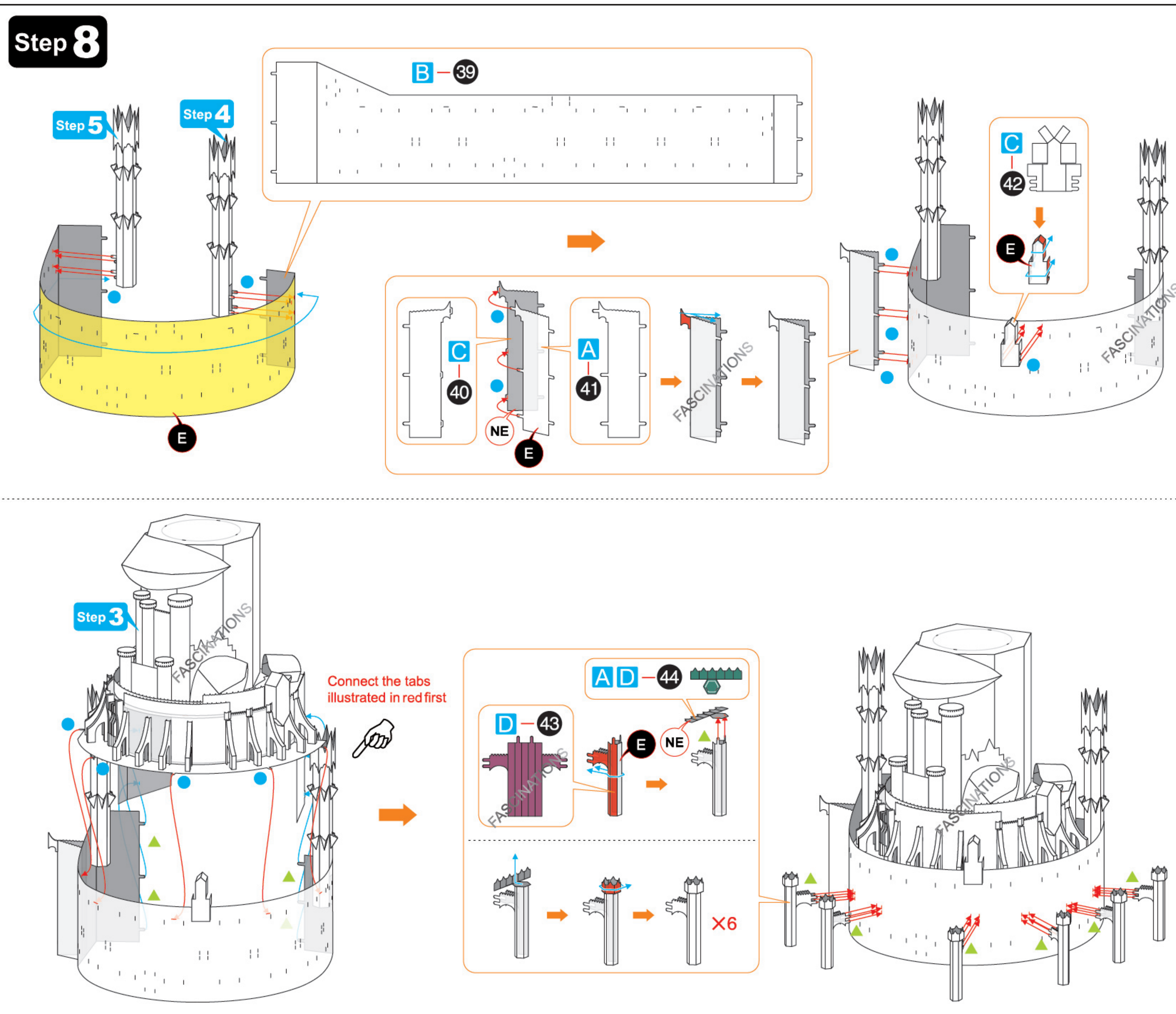
Step 6



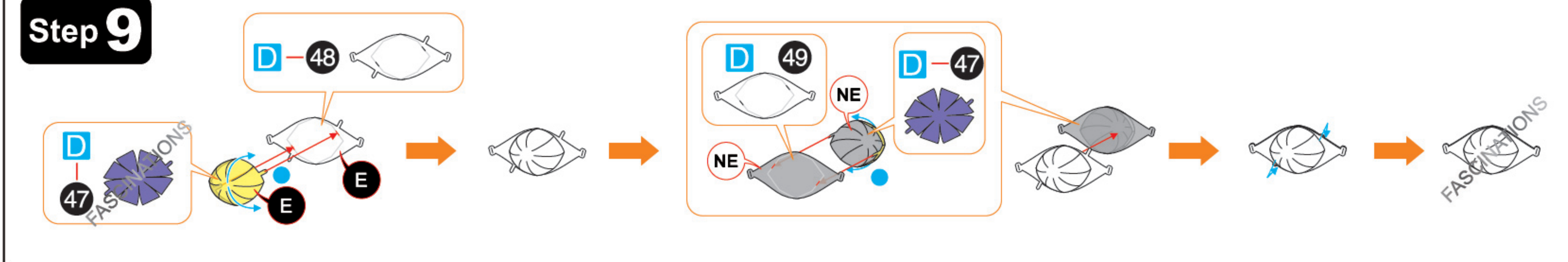
Step 7



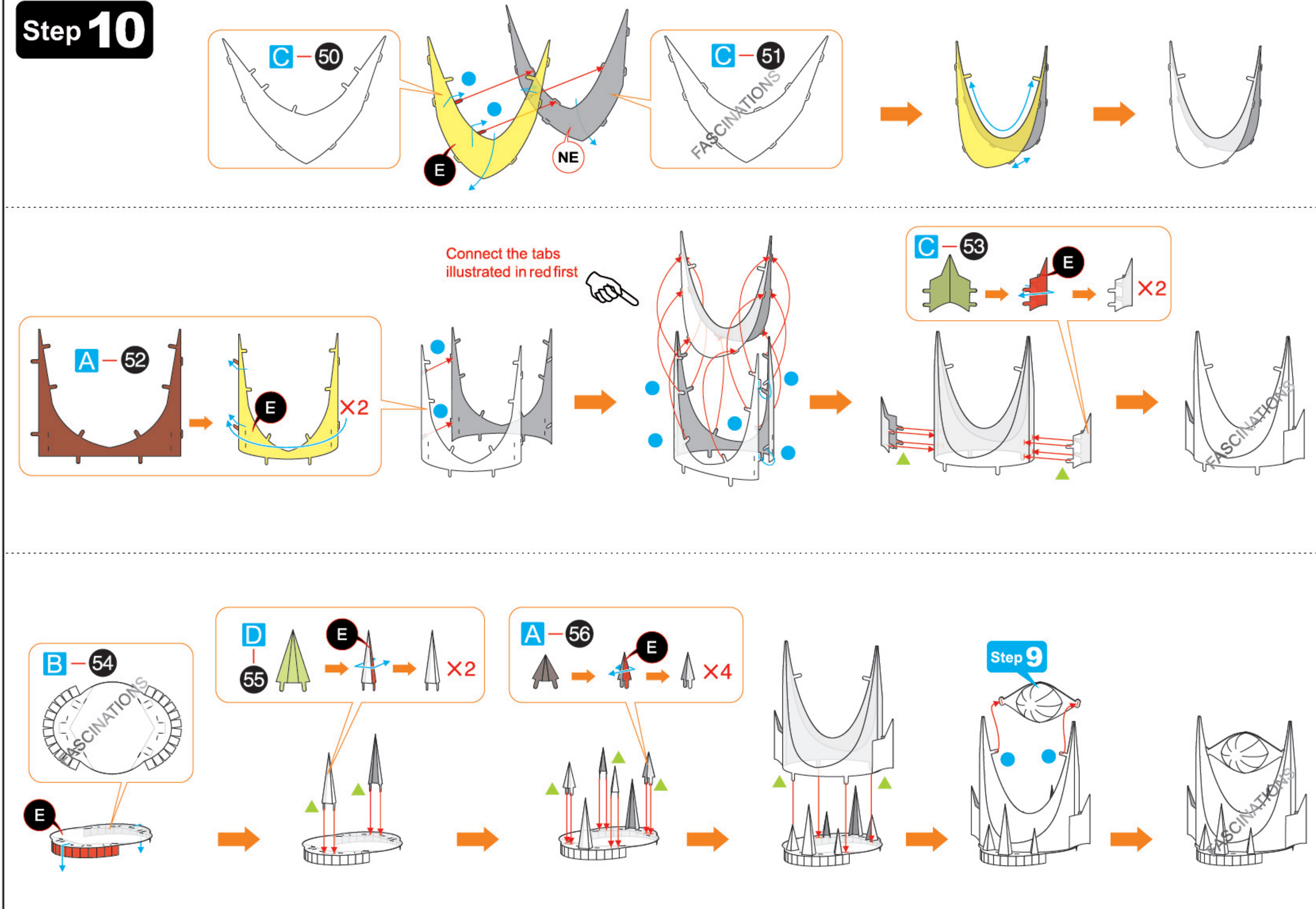
Step 8



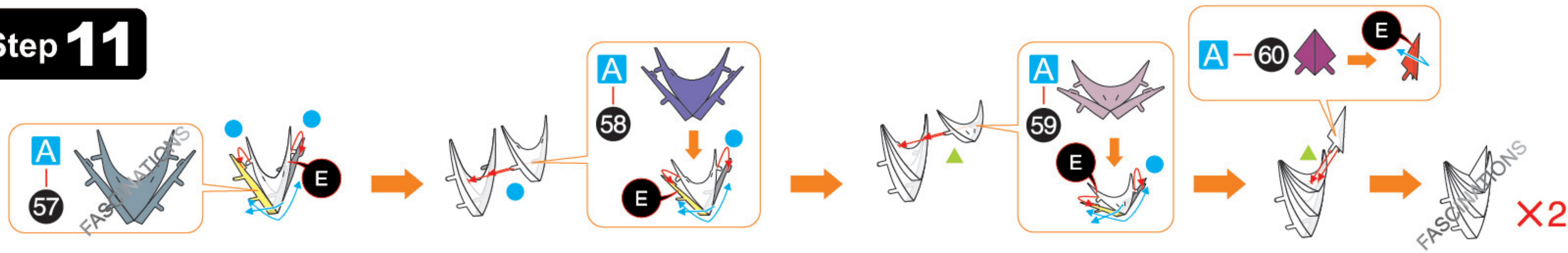
Step 9



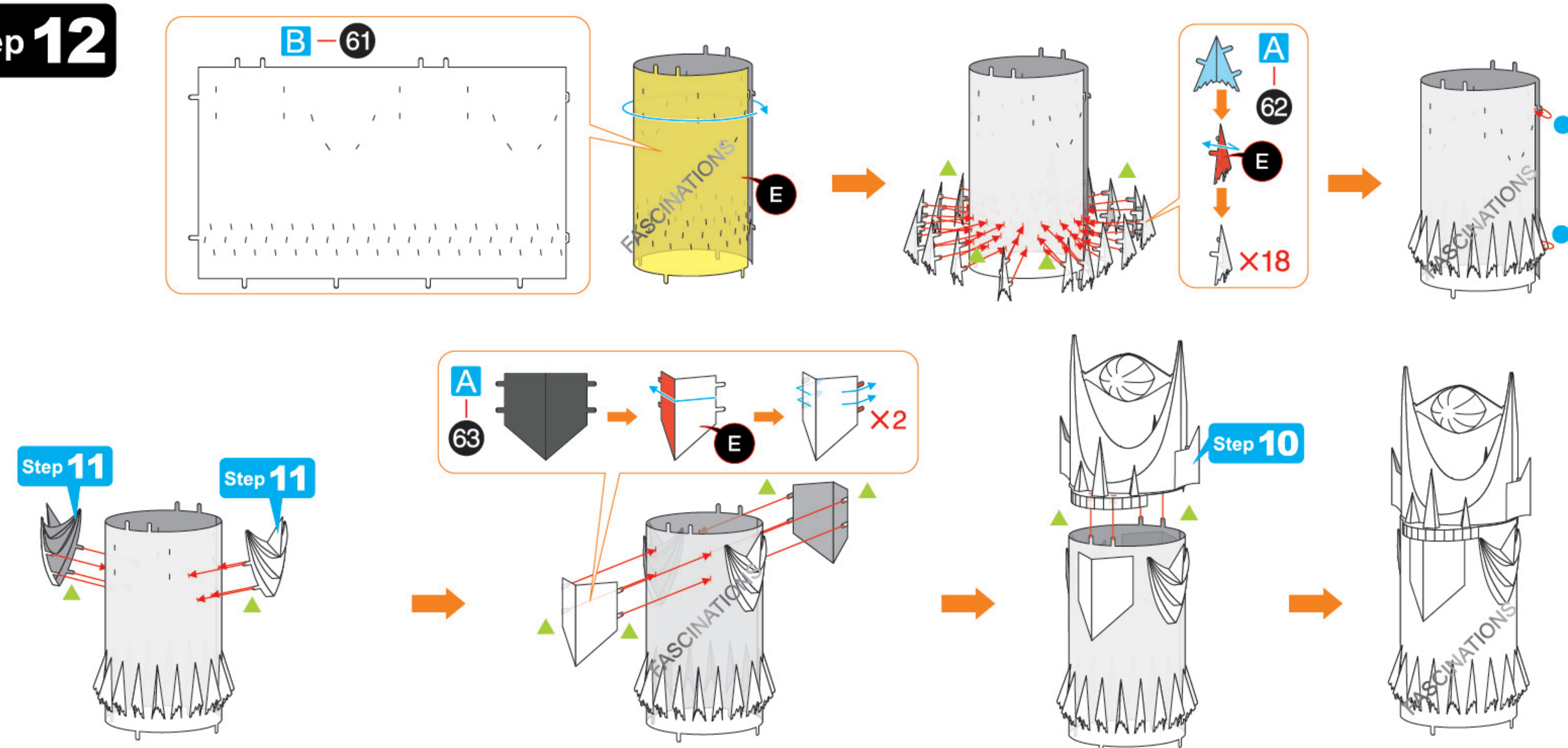
Step 10



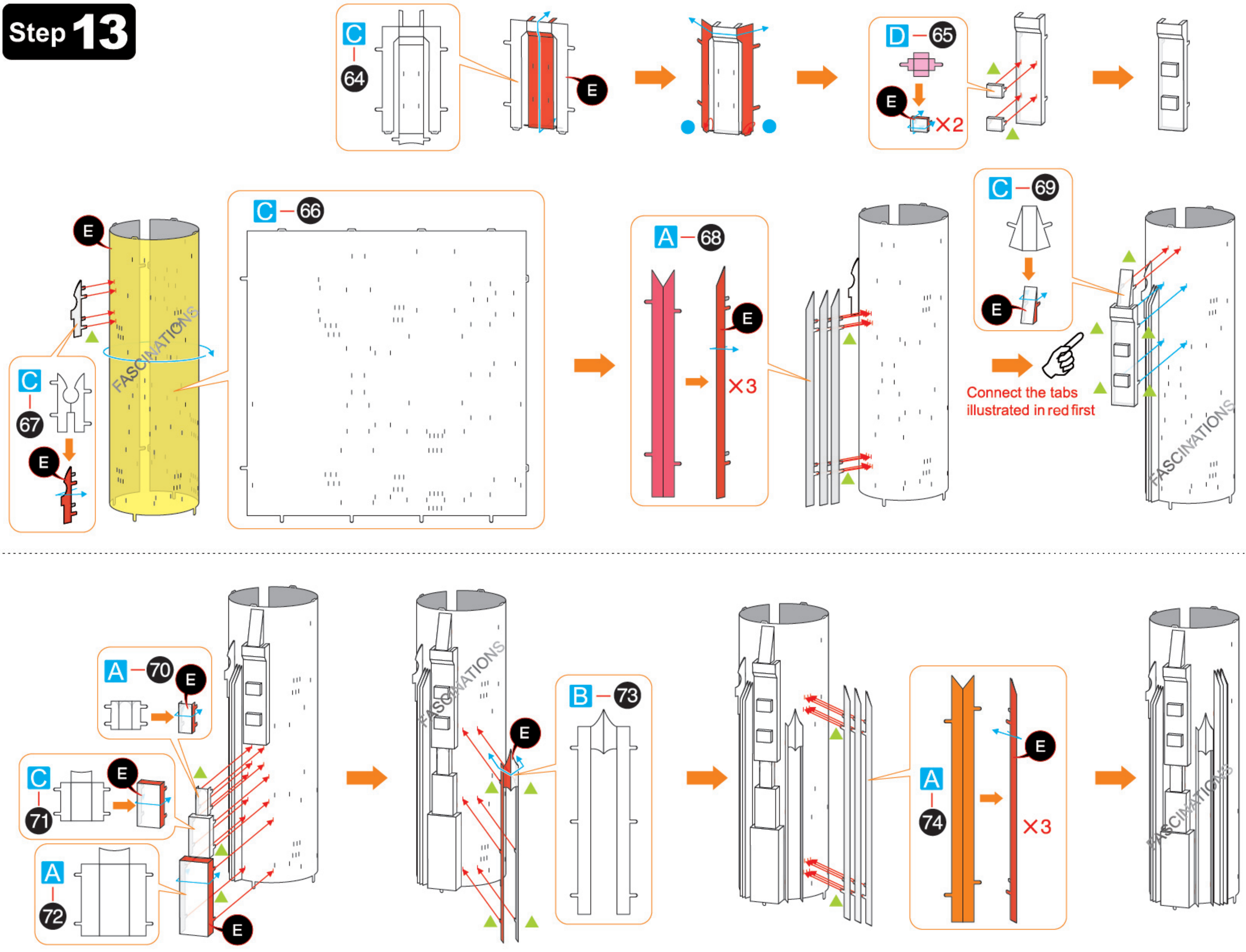
Step 11



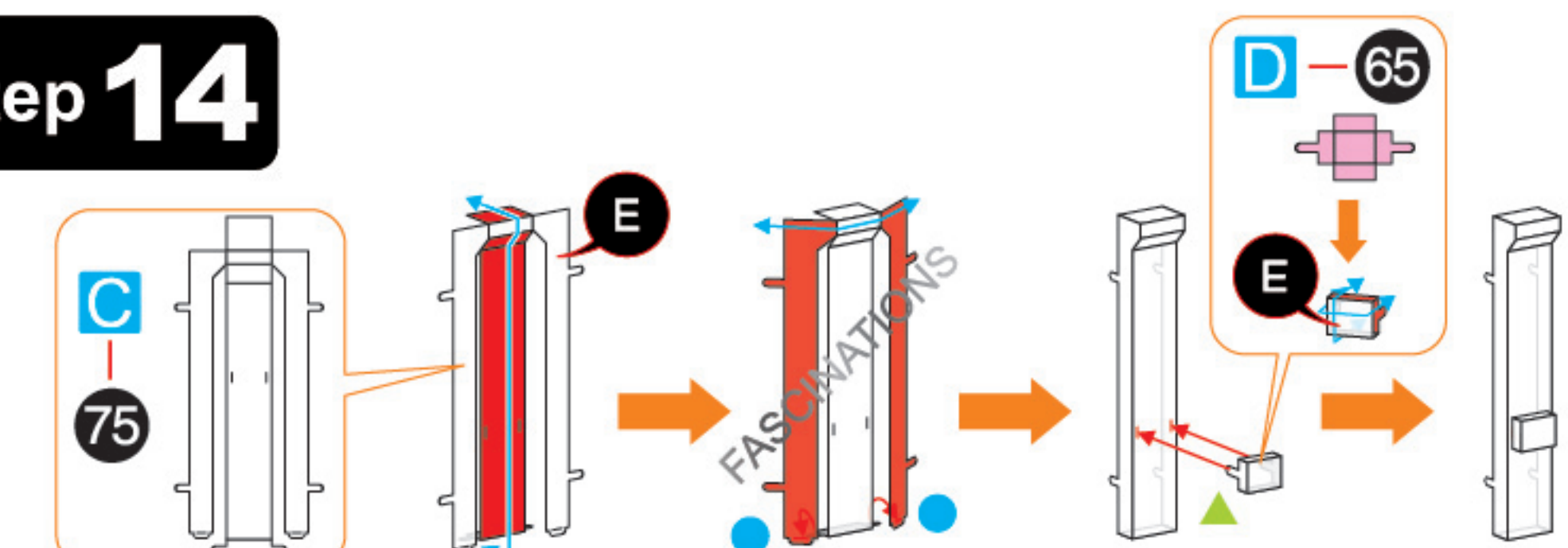
Step 12



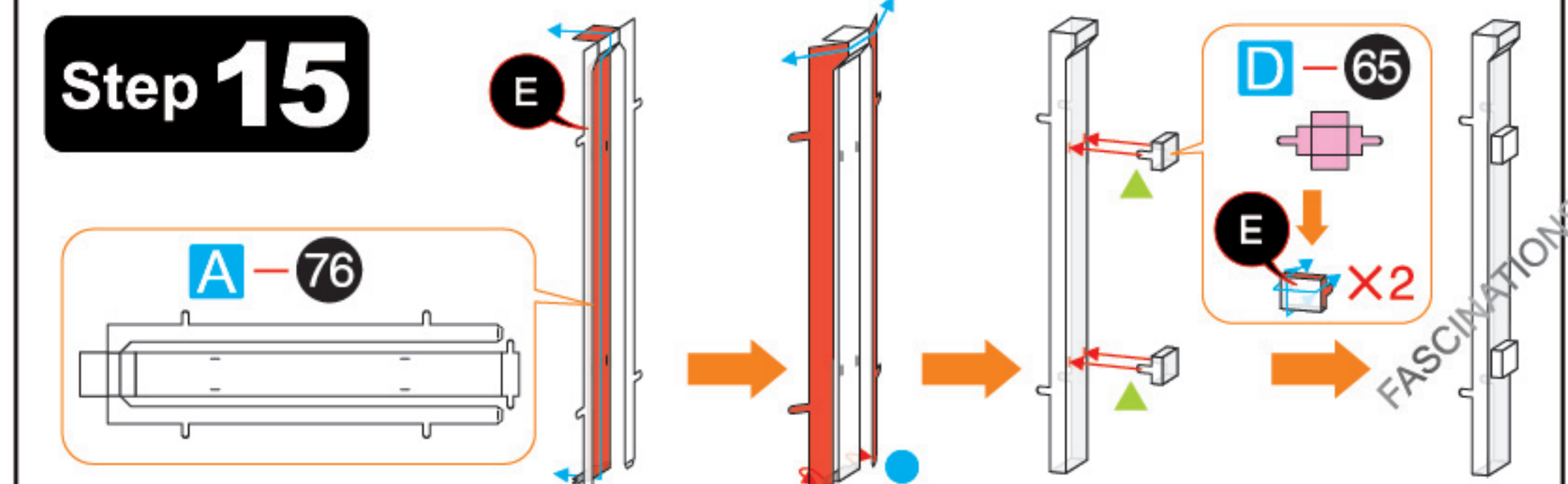
Step 13



Step 14



Step 15



Step 16

