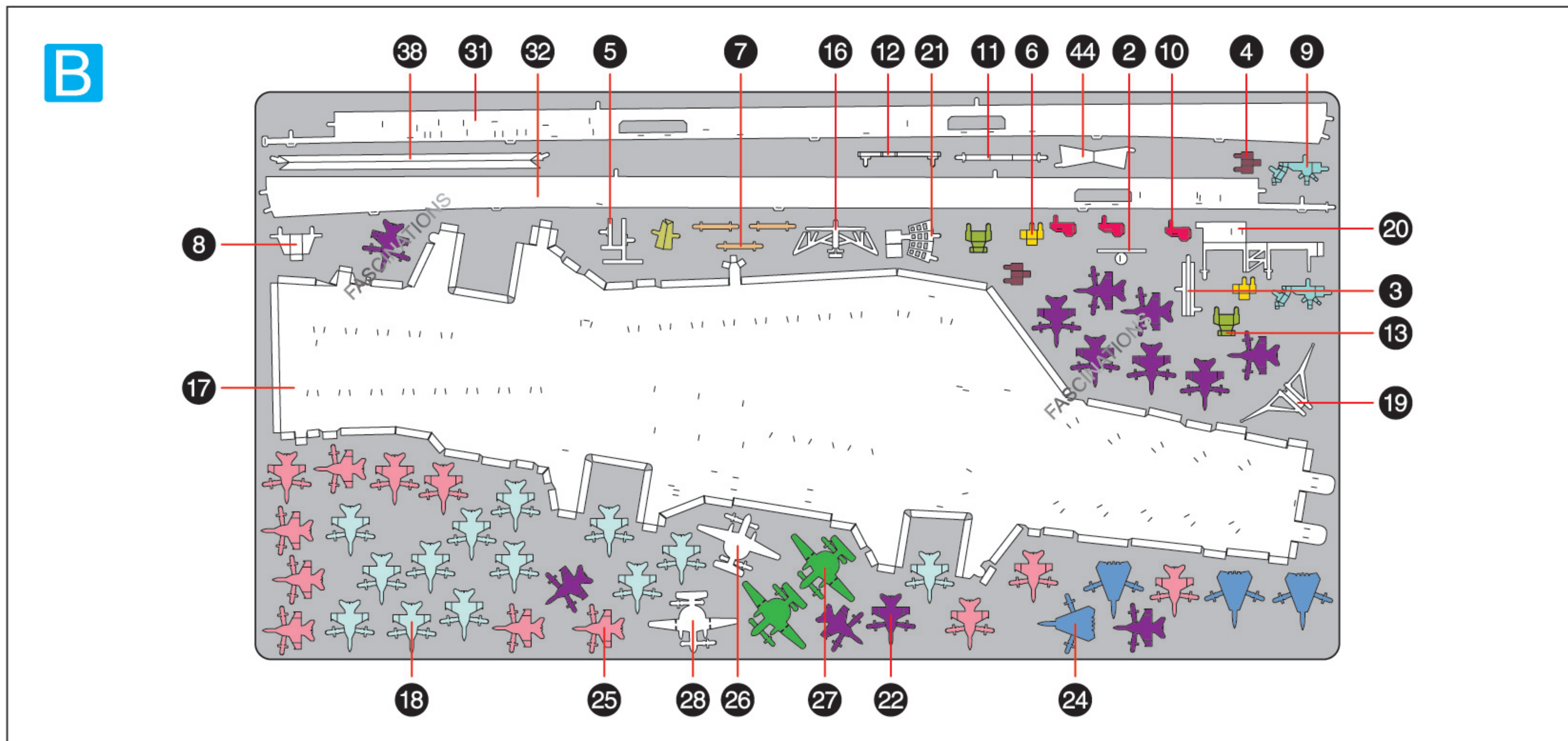
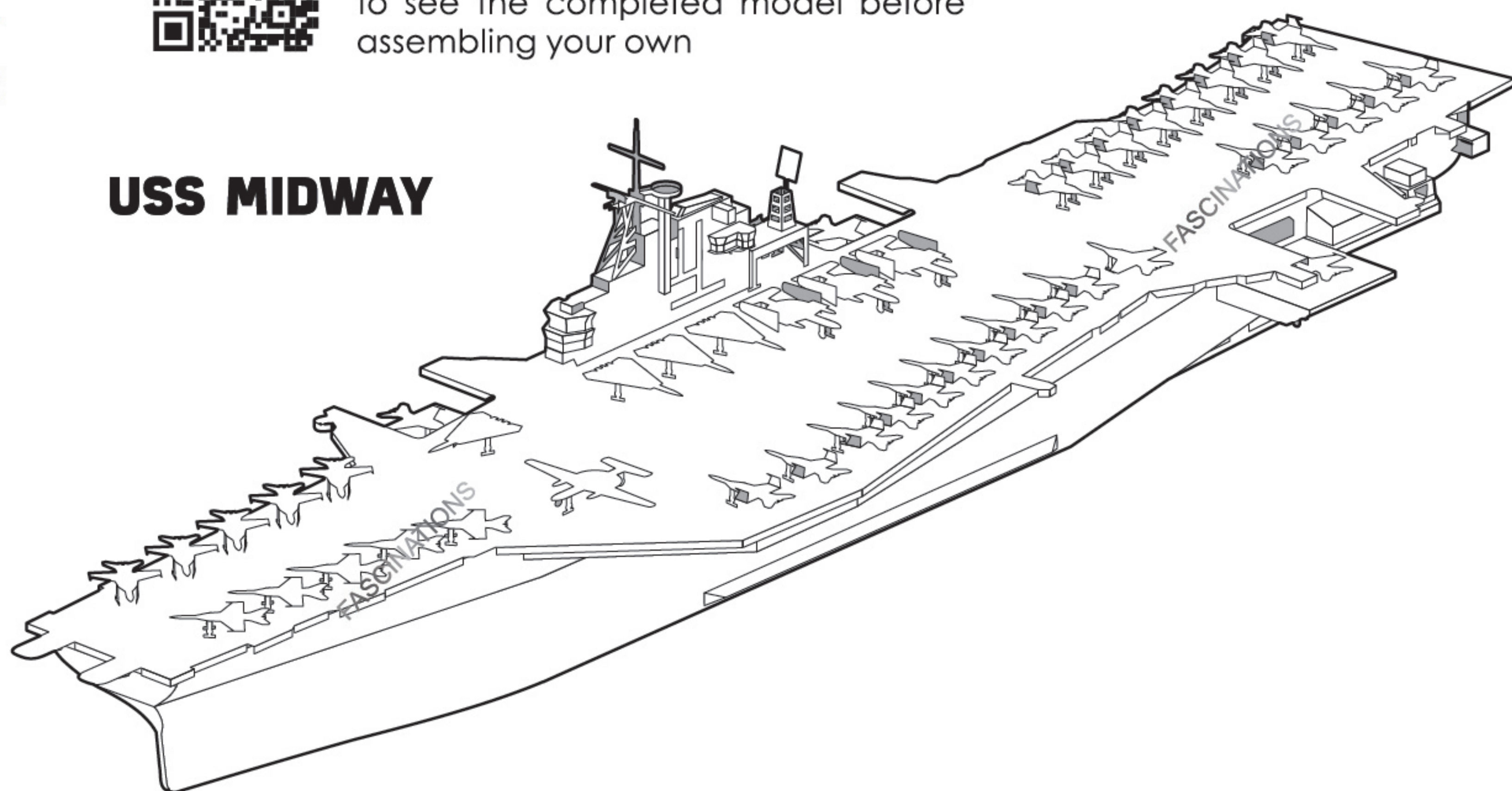




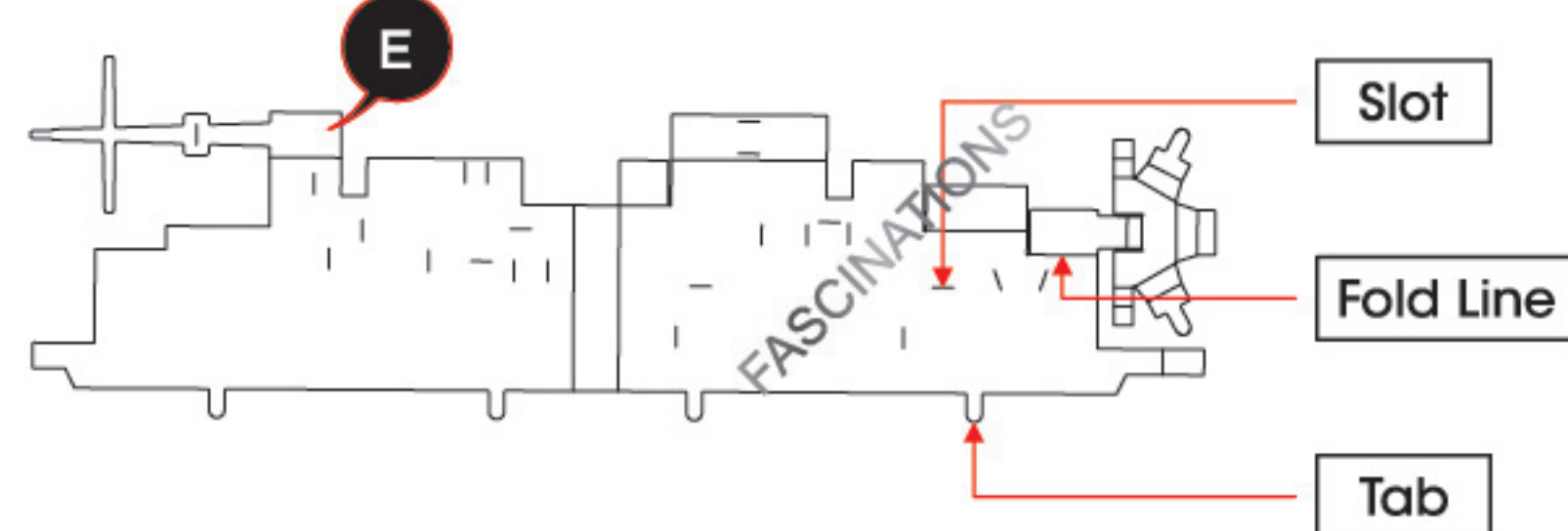
It is highly recommended that you visit www.metalearth.com/360/PS2003 to see the completed model before assembling your own

USS MIDWAY



TO CREATE THE BEST CONNECTIONS

A-1



Legends:

- E** Engraved/ Color side
- NE** Non - engraved/ Silver side
- Attention point
- Insert tab and bend 90 degrees
- Insert tab and twist 90 degrees

Assembly tip:

If needed, slightly twist tabs to hold parts together then untwist and bend them down for a nice finish.



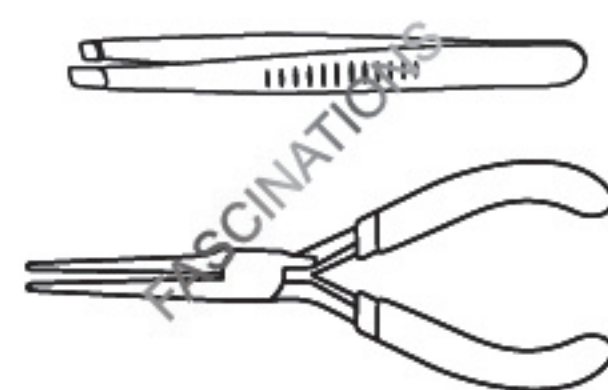
In order to avoid possible injury from sharp edges, please carefully discard the metal sheets after parts have been removed.

Recommended tools:

- Wire cutters: helpful for taking parts from the metal sheets.



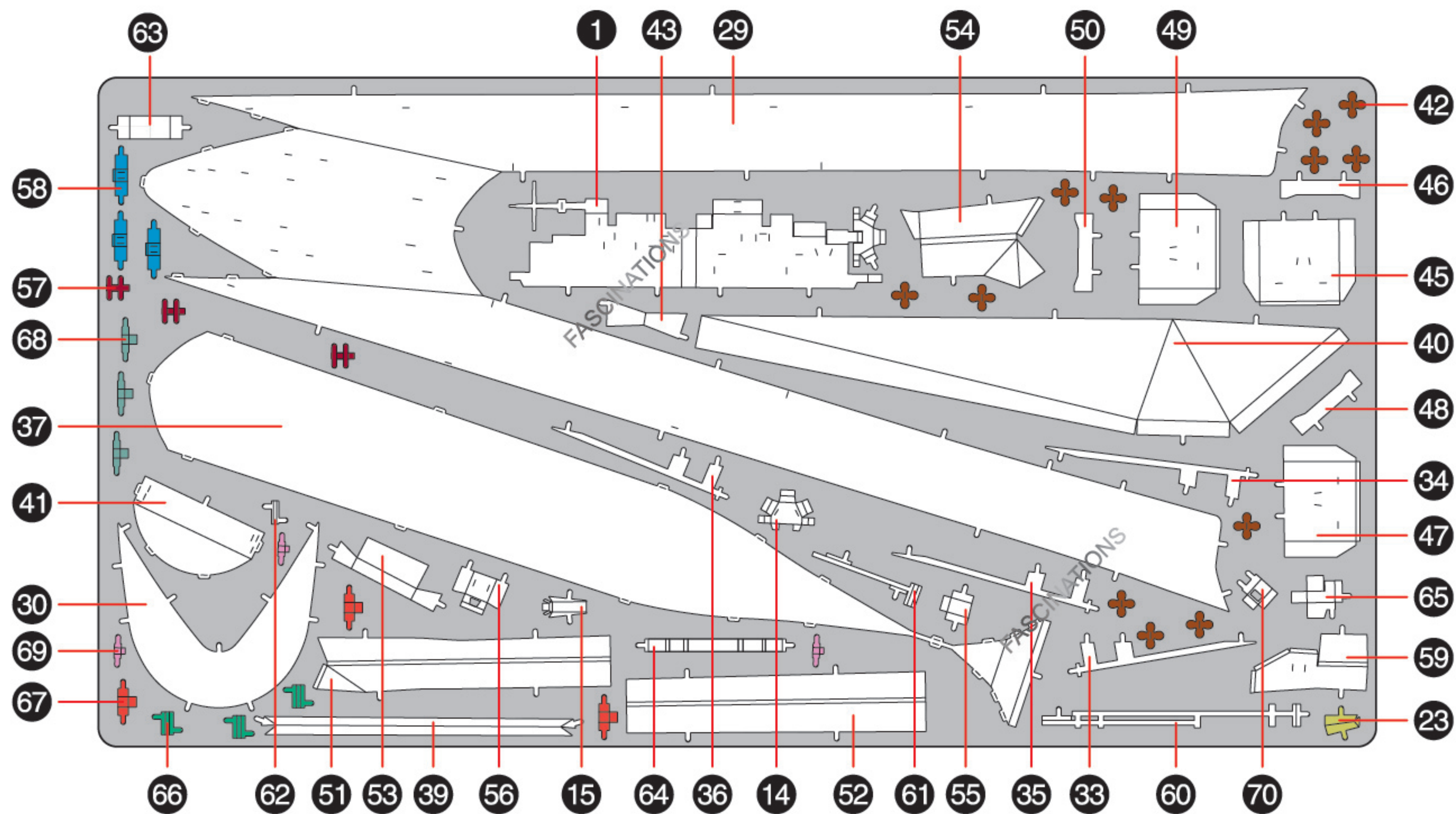
- Tweezers or needle nose pliers: helpful for folding parts, bending and twisting tabs.



METAL SHEETS

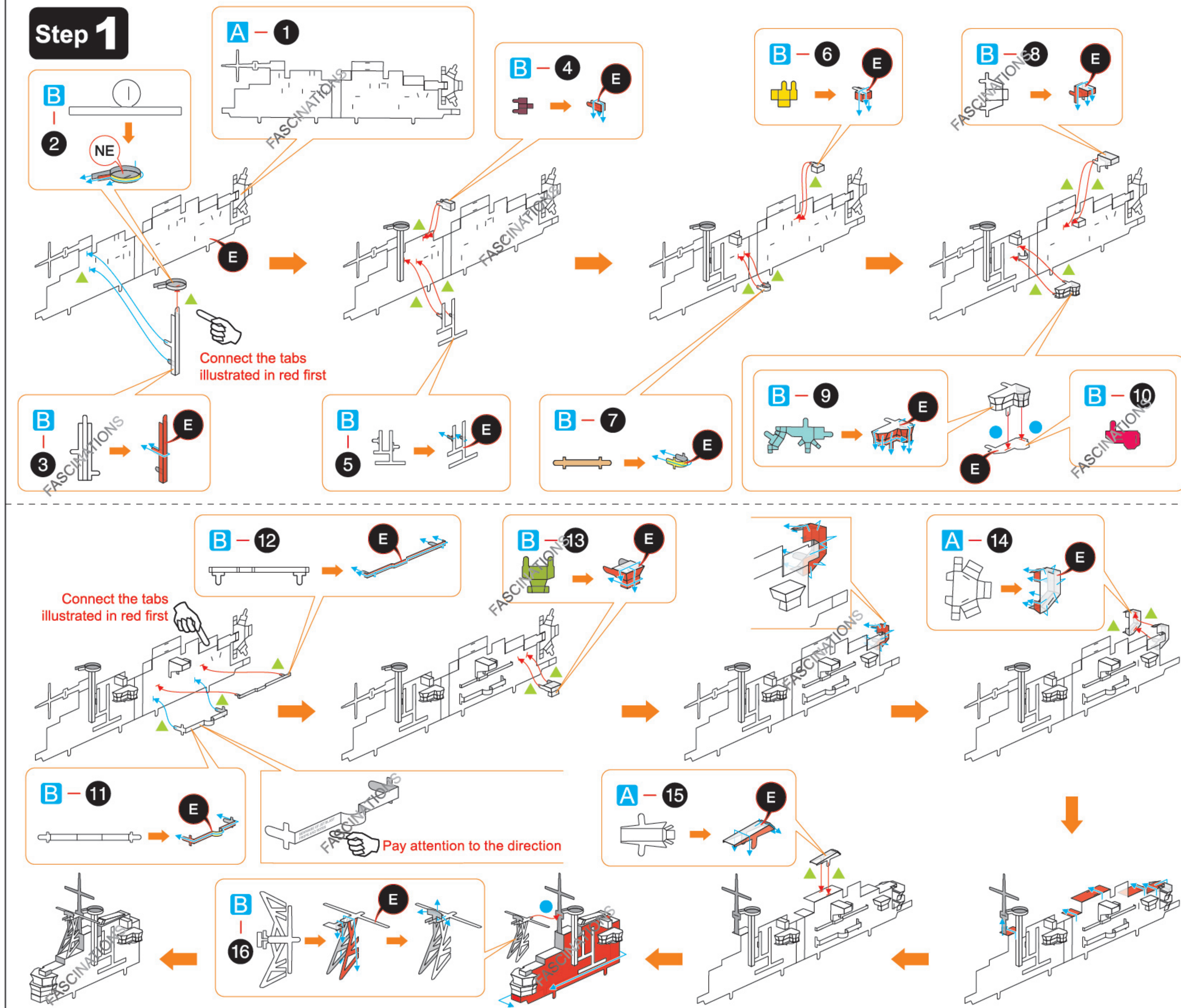
Parts with same color are duplicates

A

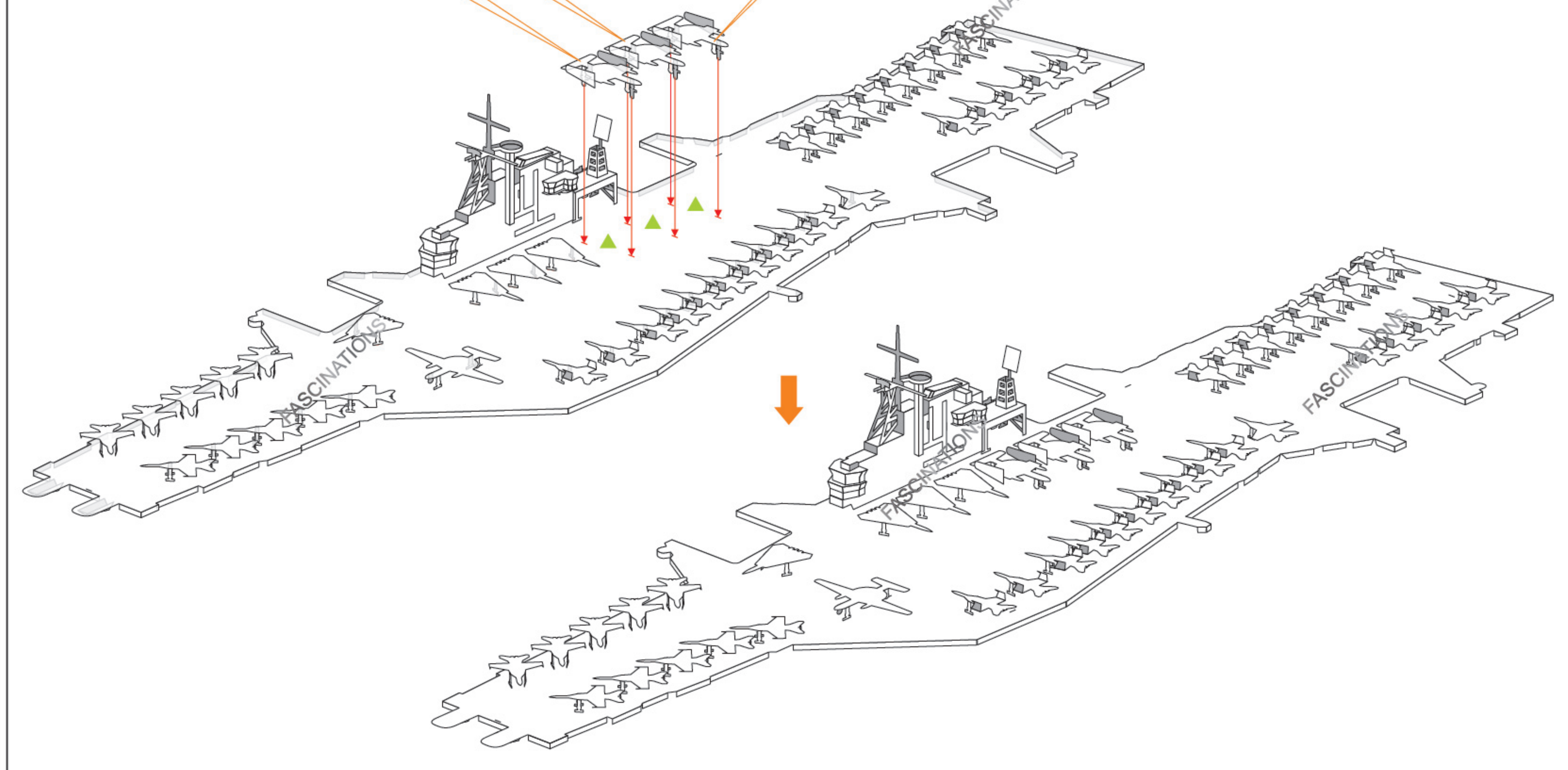
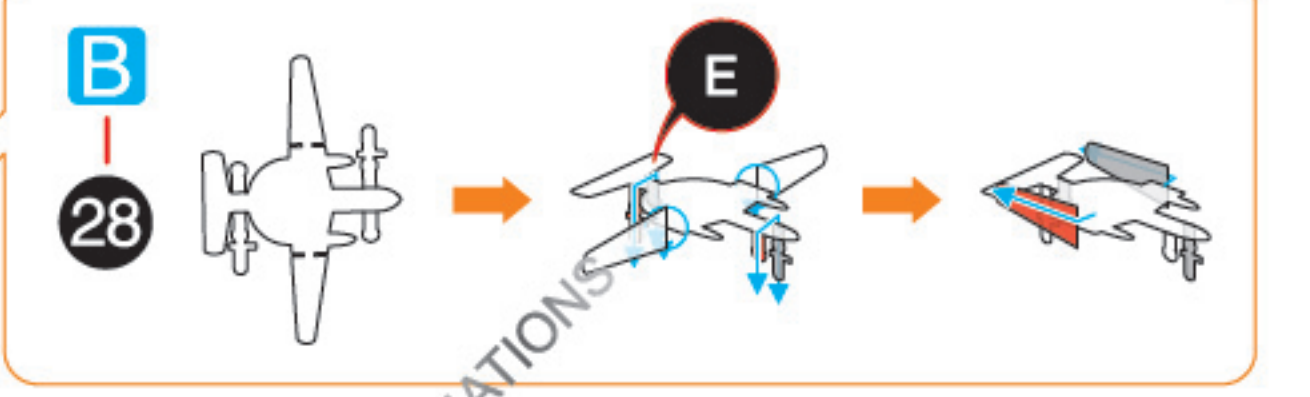
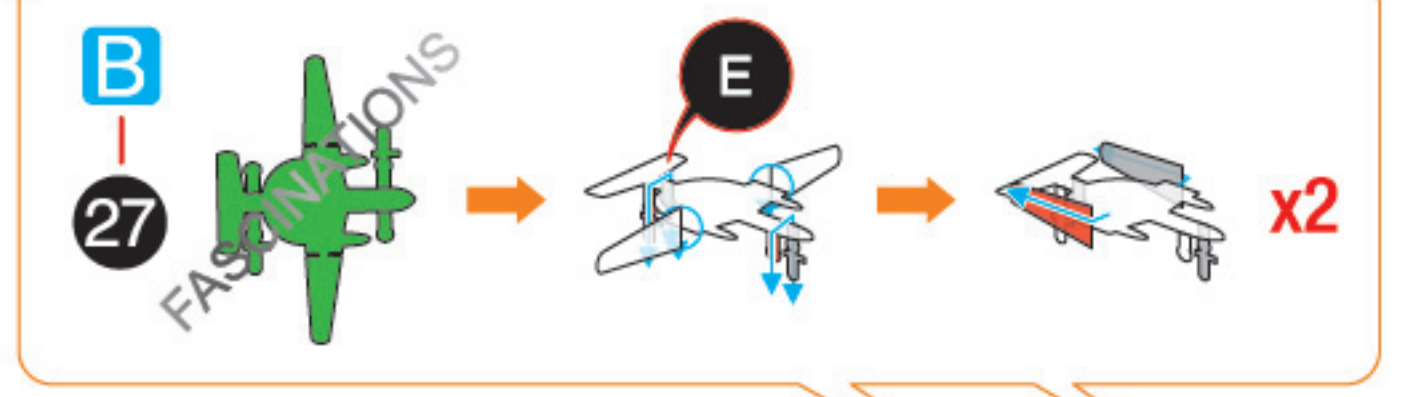
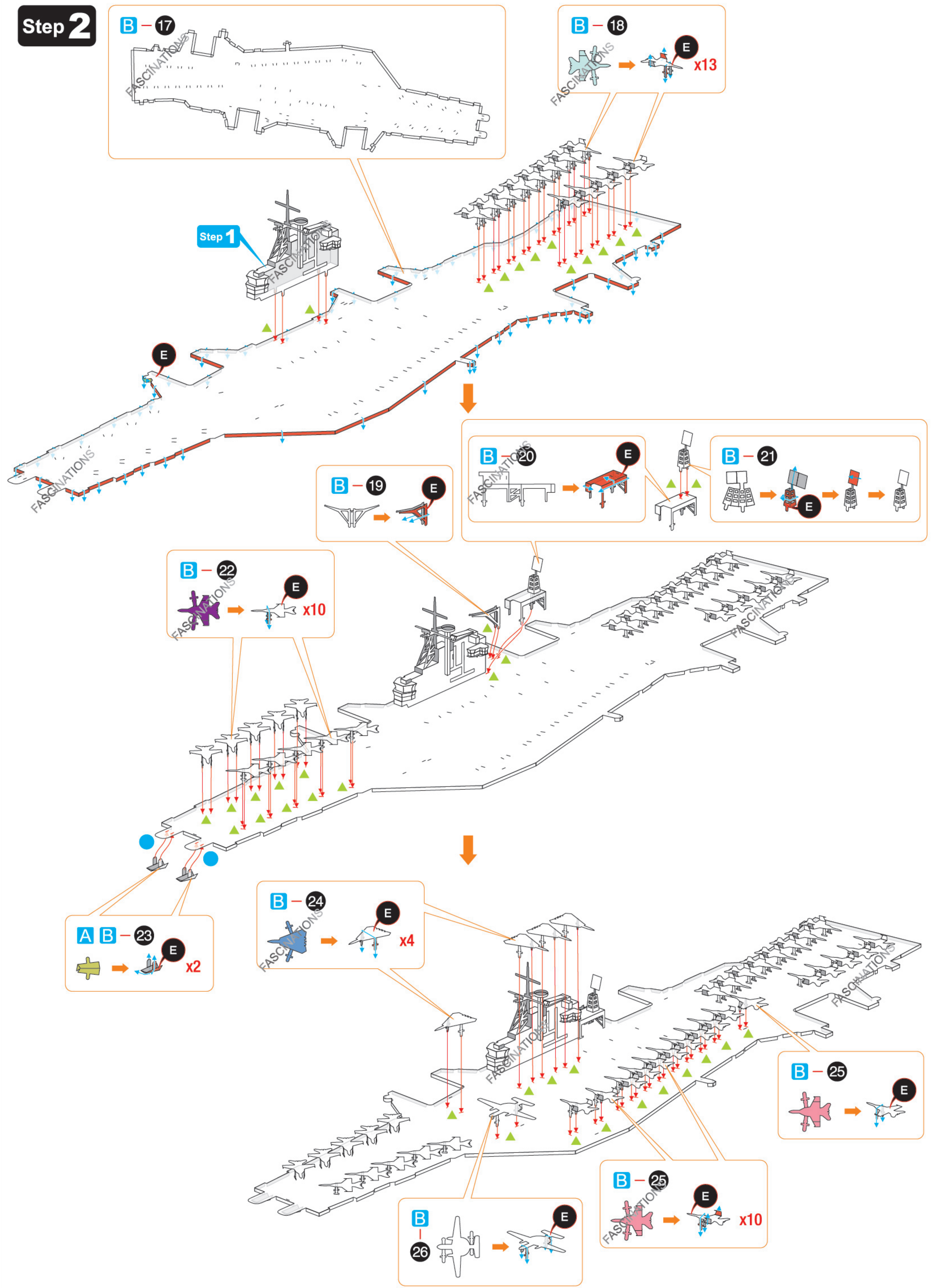


ASSEMBLY STEPS

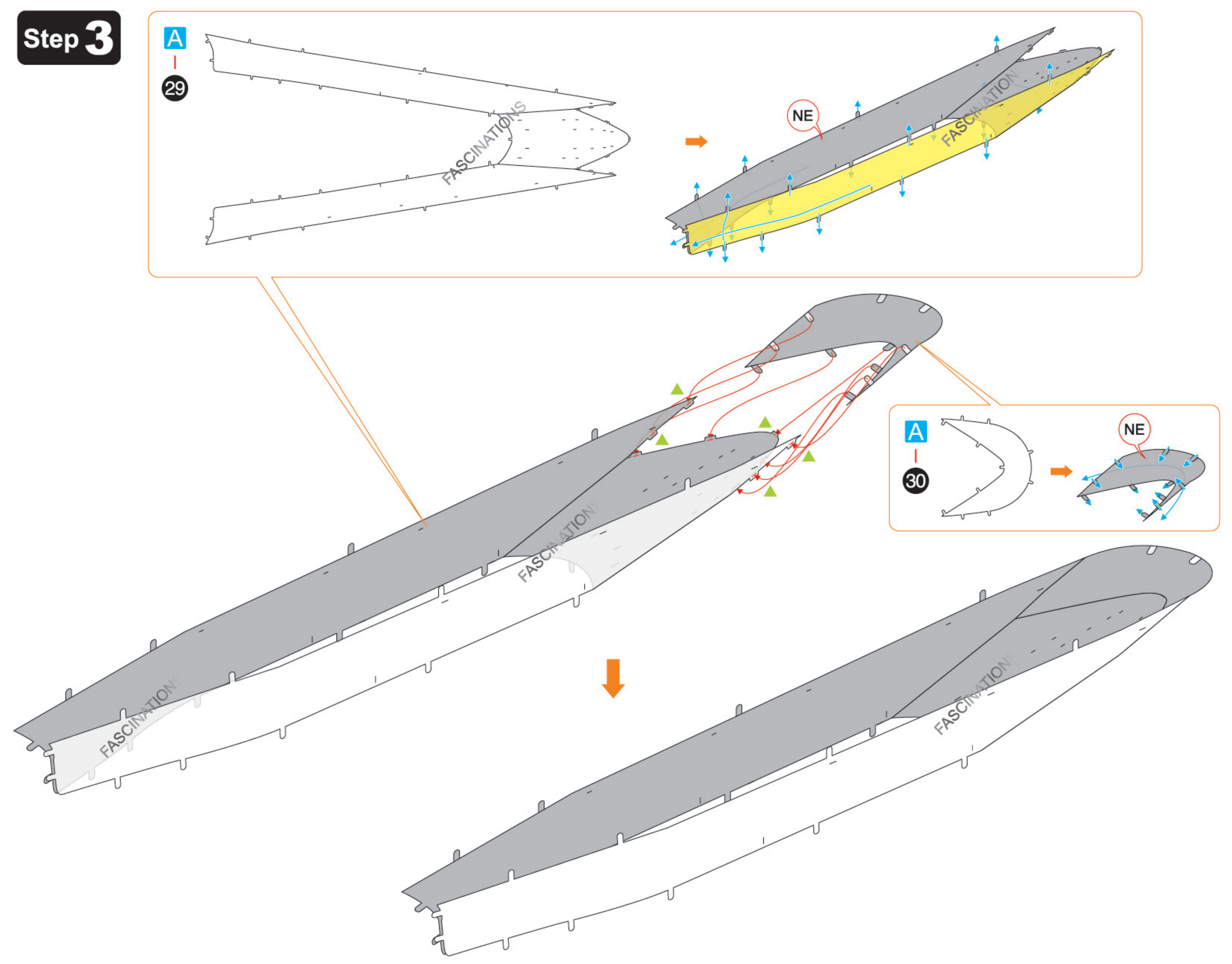
Step 1



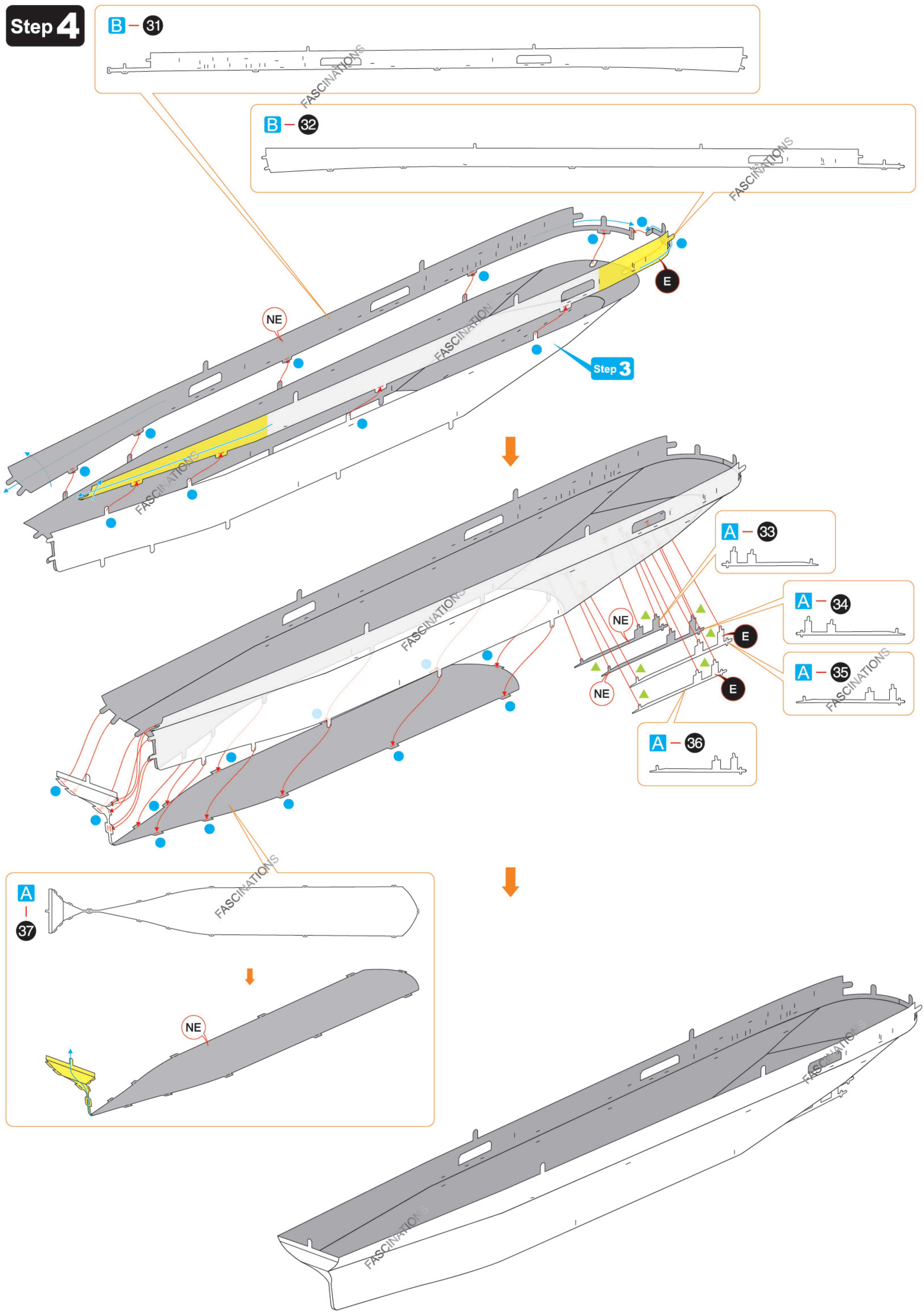
Step 2



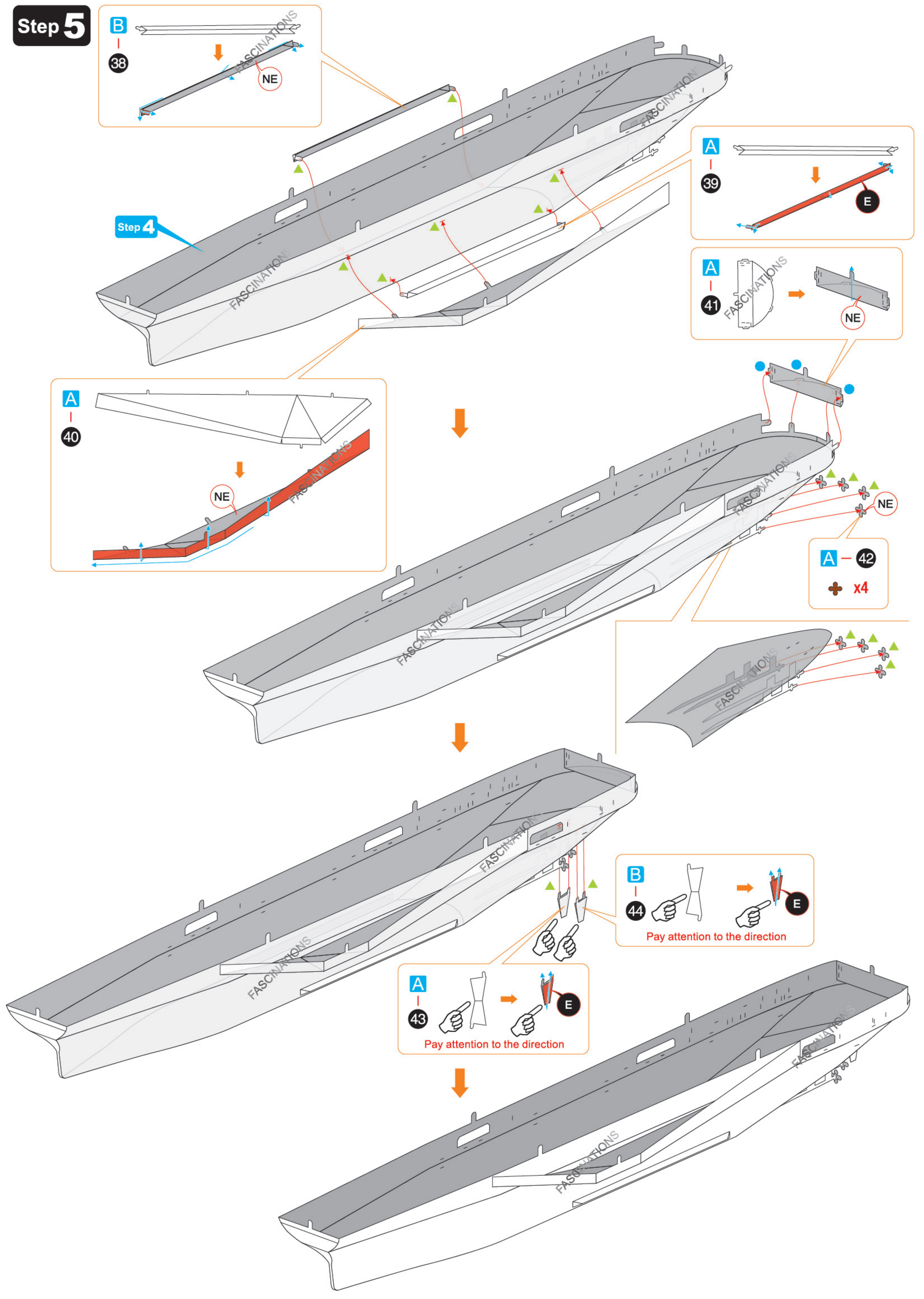
Step 3



Step 4



Step 5



Step 6

