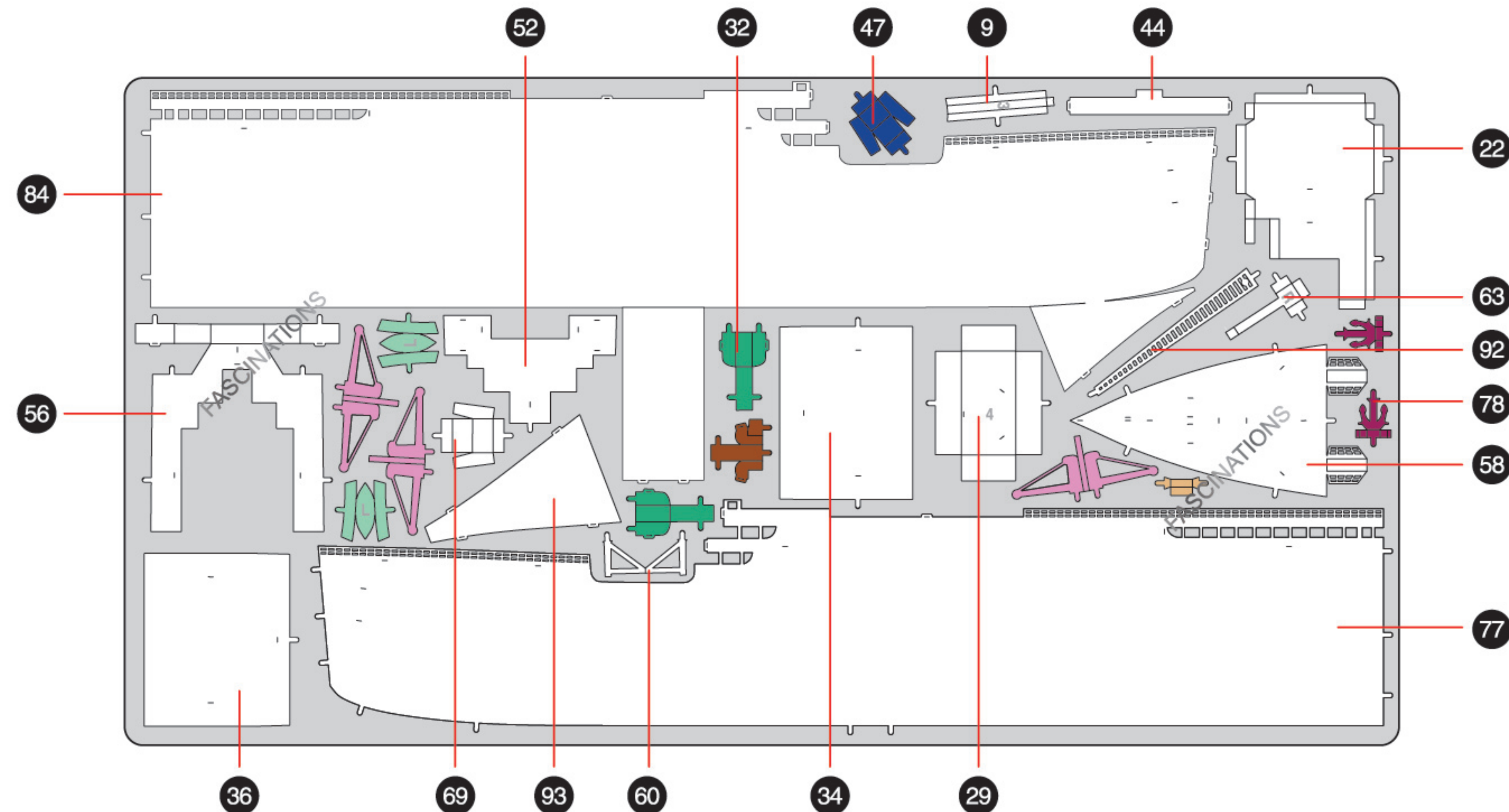


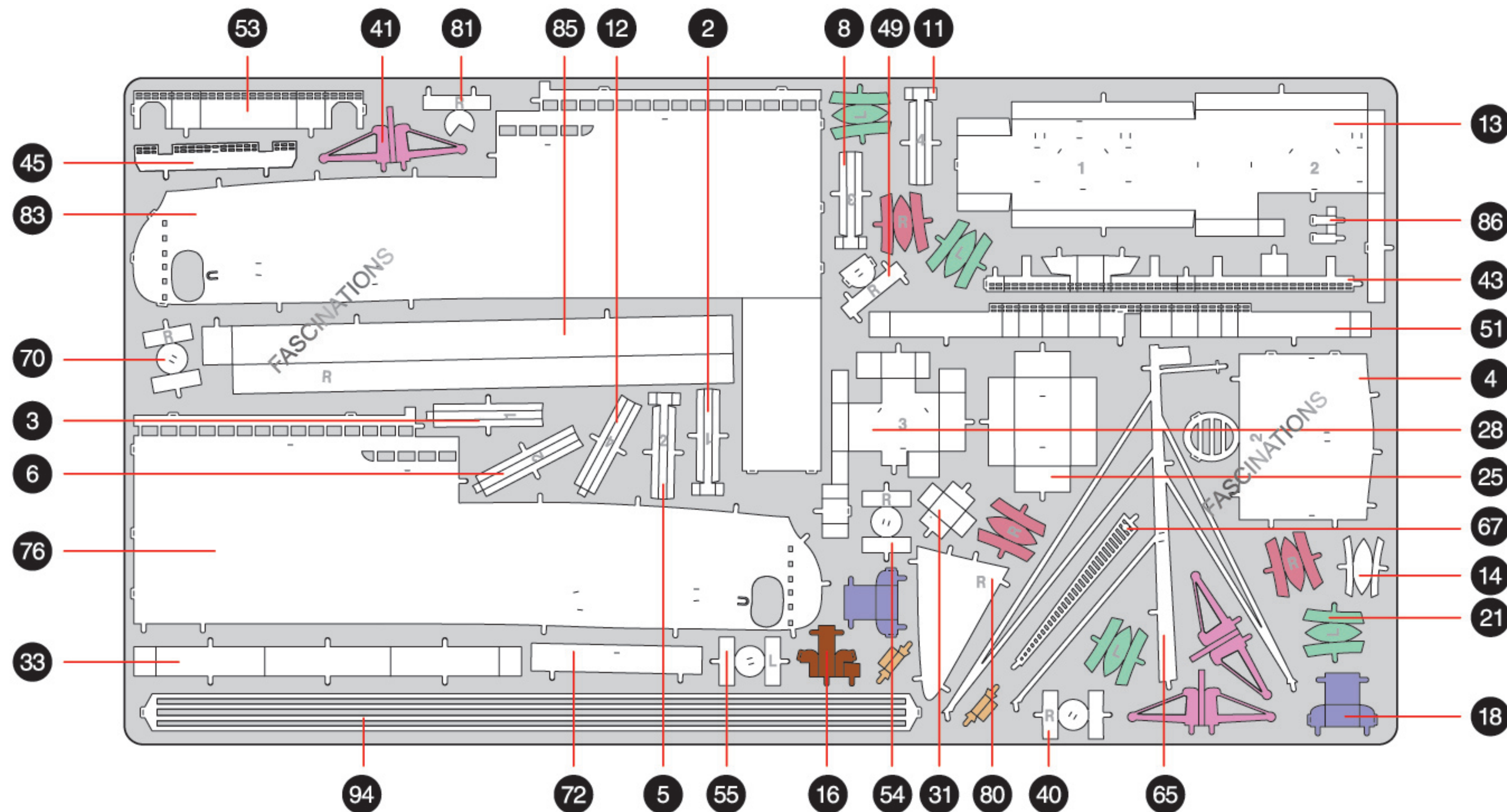
## METAL SHEETS

Parts with same color are duplicates

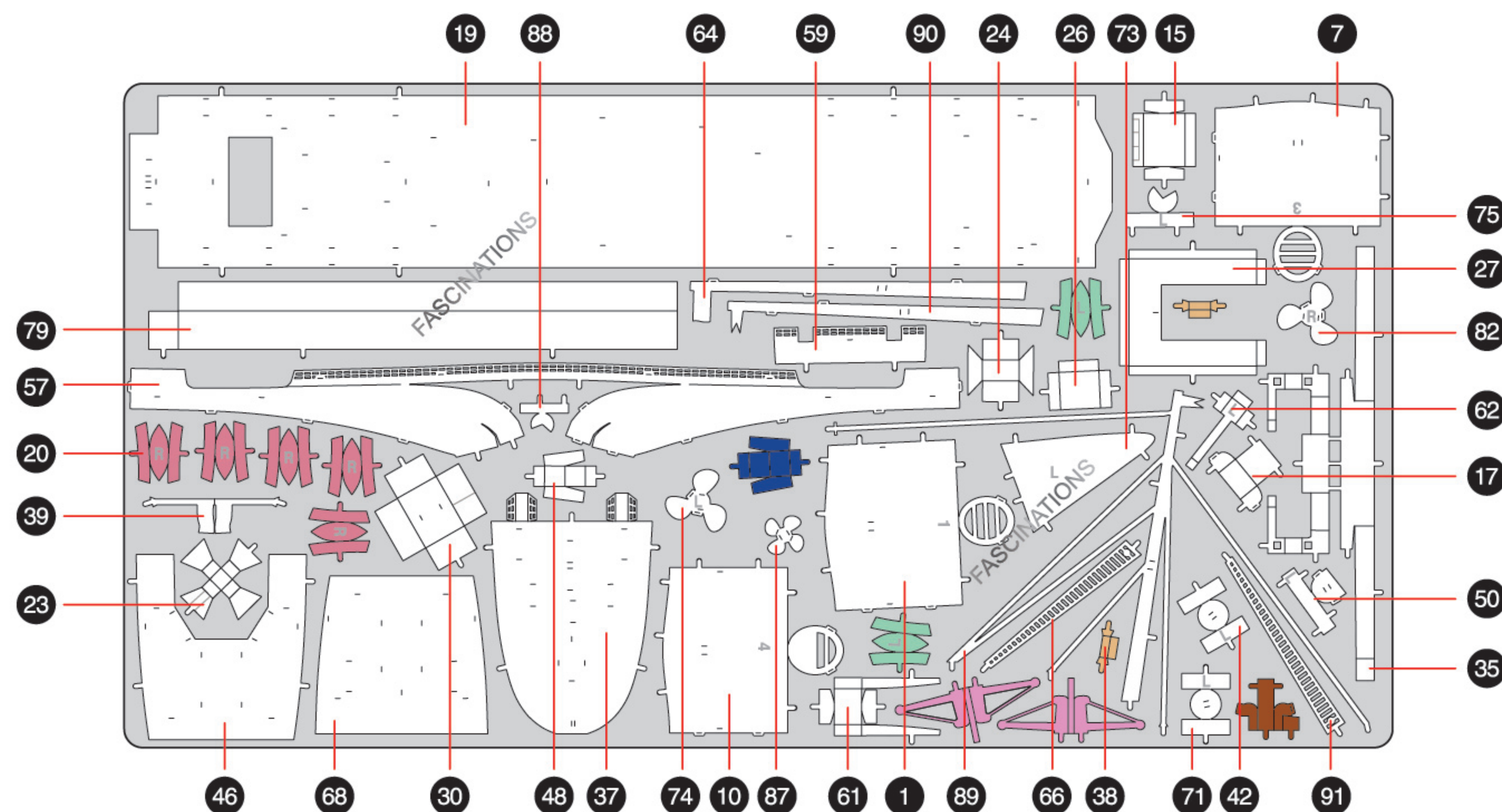
A



B



C



# Metal Earth

360°  
view

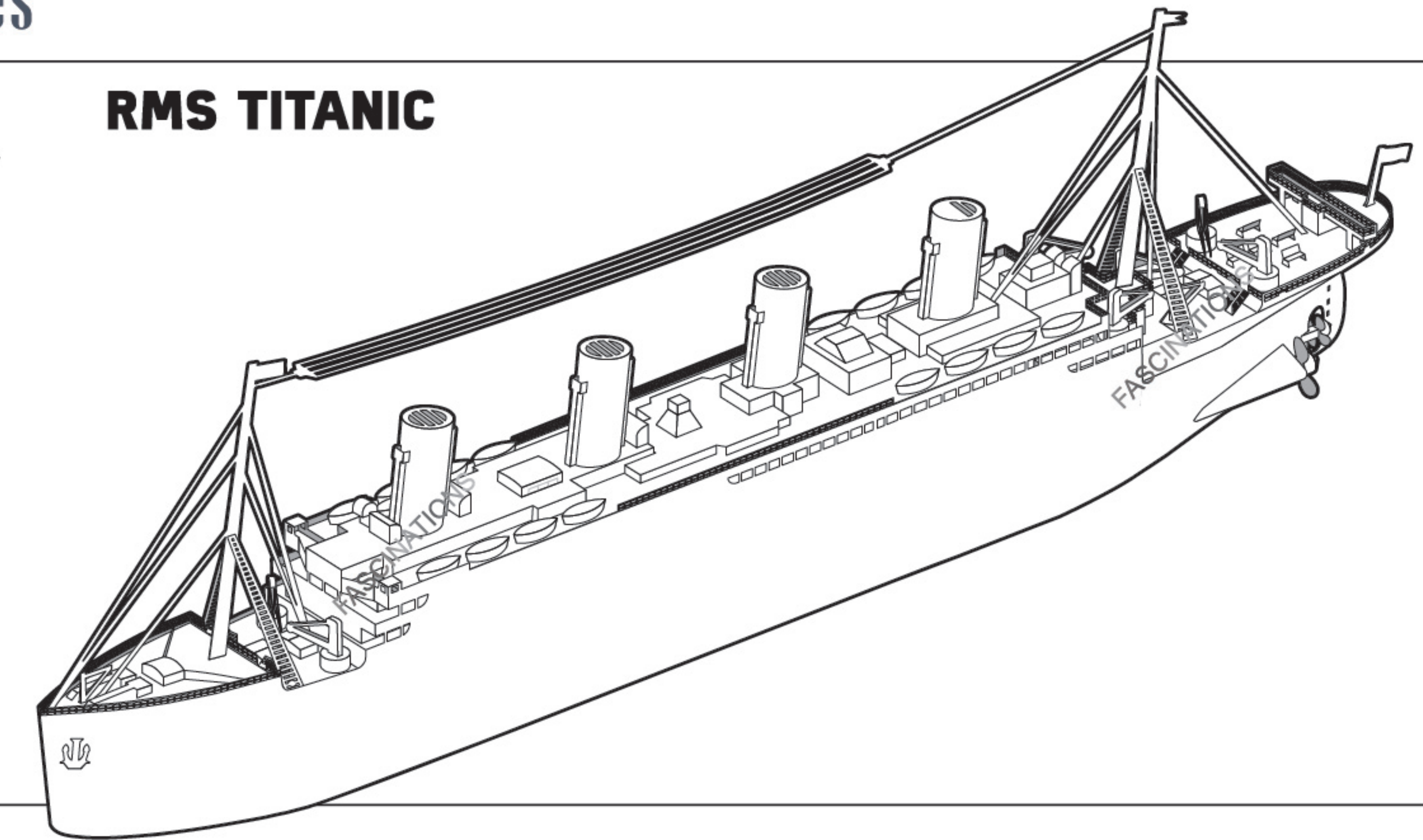


It is highly recommended that you visit [www.metalearth.com/360/PS2004](http://www.metalearth.com/360/PS2004) to see the completed model before assembling your own

## Premium Series

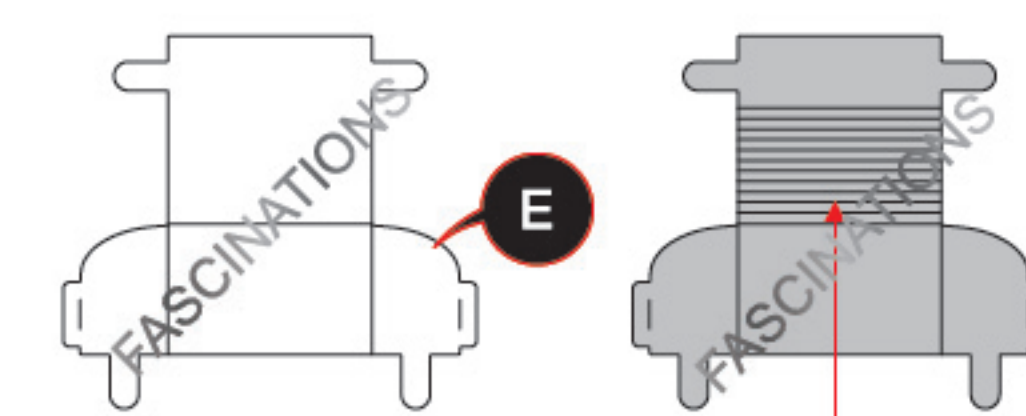
PS2004

RMS TITANIC



## TO CREATE THE BEST CONNECTIONS

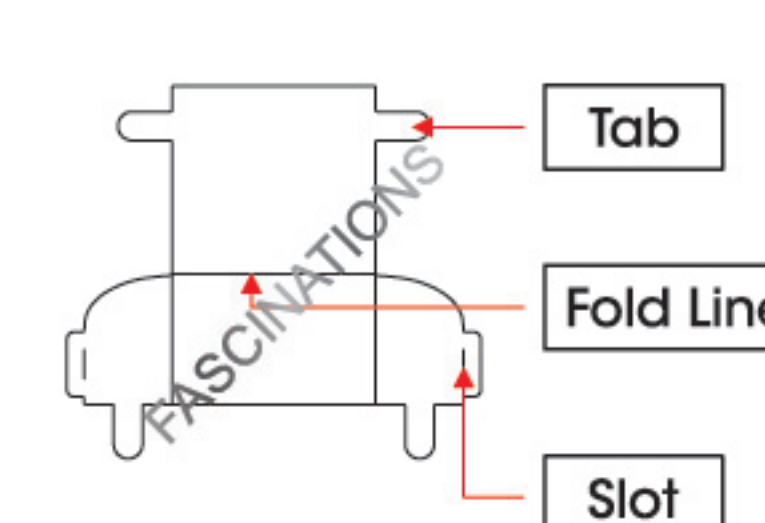
B - 18



Consider these engraved stripes as supporting features for the bend



In order to avoid possible injury from sharp edges, please carefully discard the metal sheets after parts have been removed.



### Legends:

- E** Engraved/ Color side
- NE** Non - engraved/ Silver side
- Attention point
- Insert tab and bend 90 degrees
- Insert tab and twist 90 degrees

### Recommended tools:

- Wire cutters: helpful for taking parts from the metal sheets.



- Tweezers or needle nose pliers: helpful for folding parts, bending and twisting tabs.

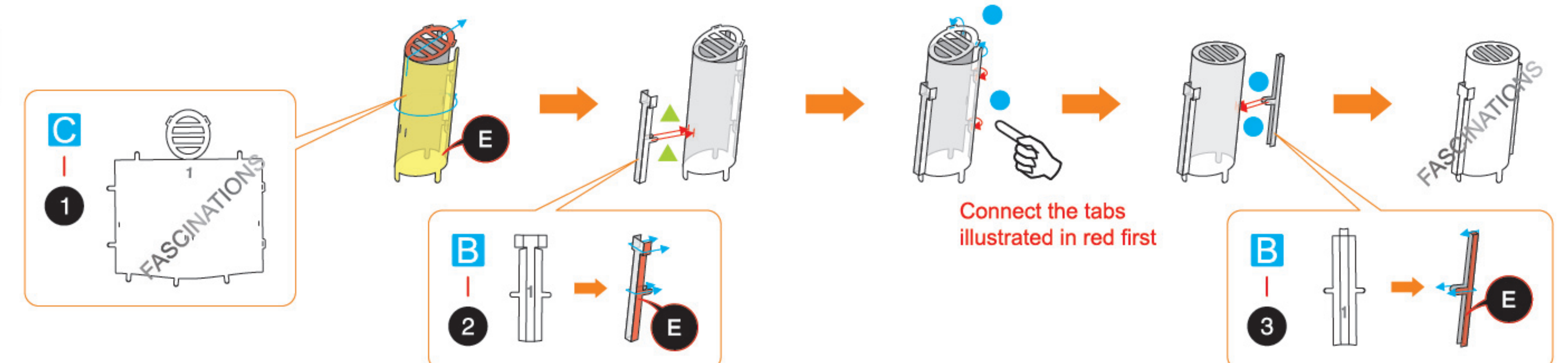


### Assembly tip:

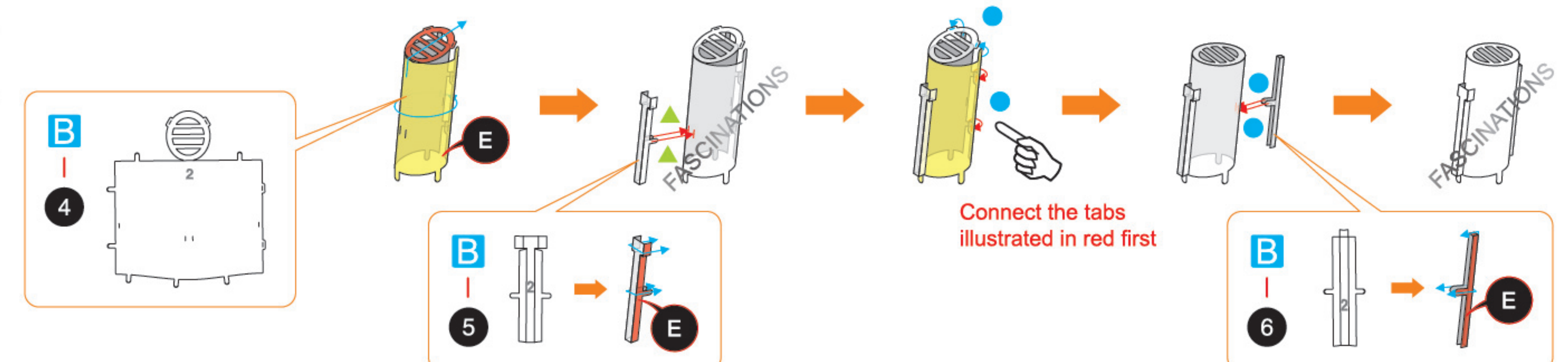
If needed, slightly twist tabs to hold parts together then untwist and bend them down for a nice finish.

## ASSEMBLY STEPS

Step 1

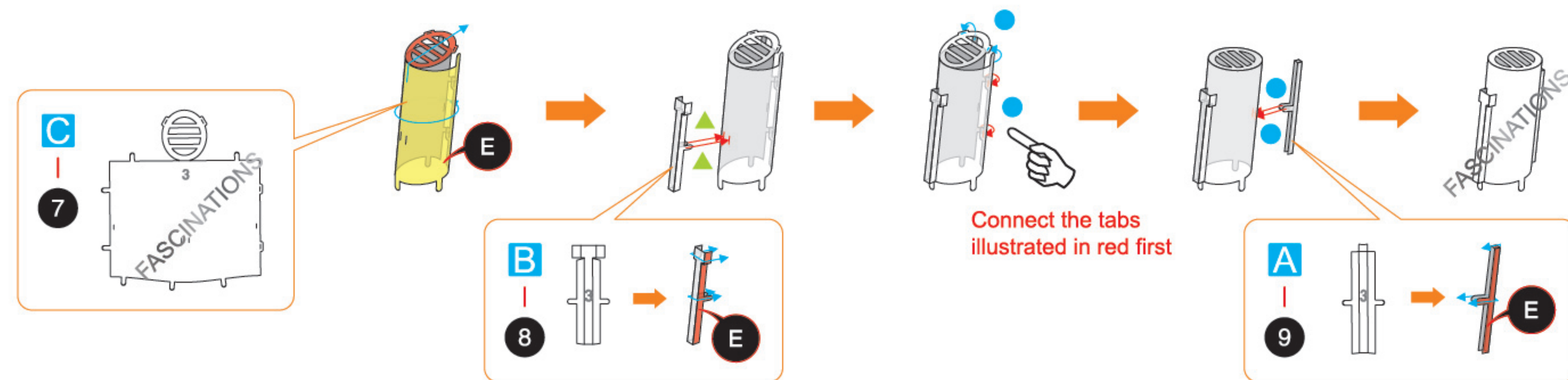


Step 2

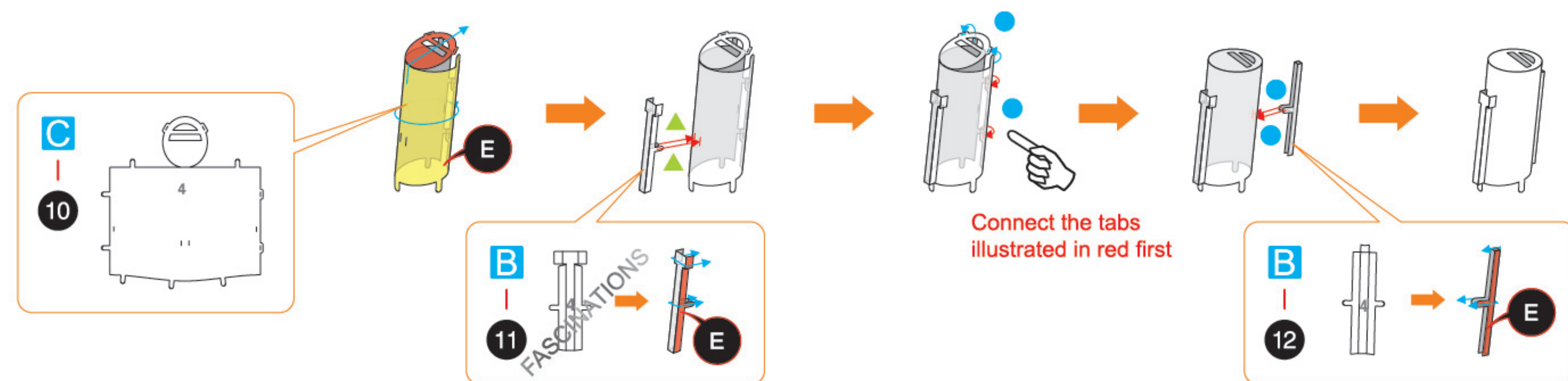




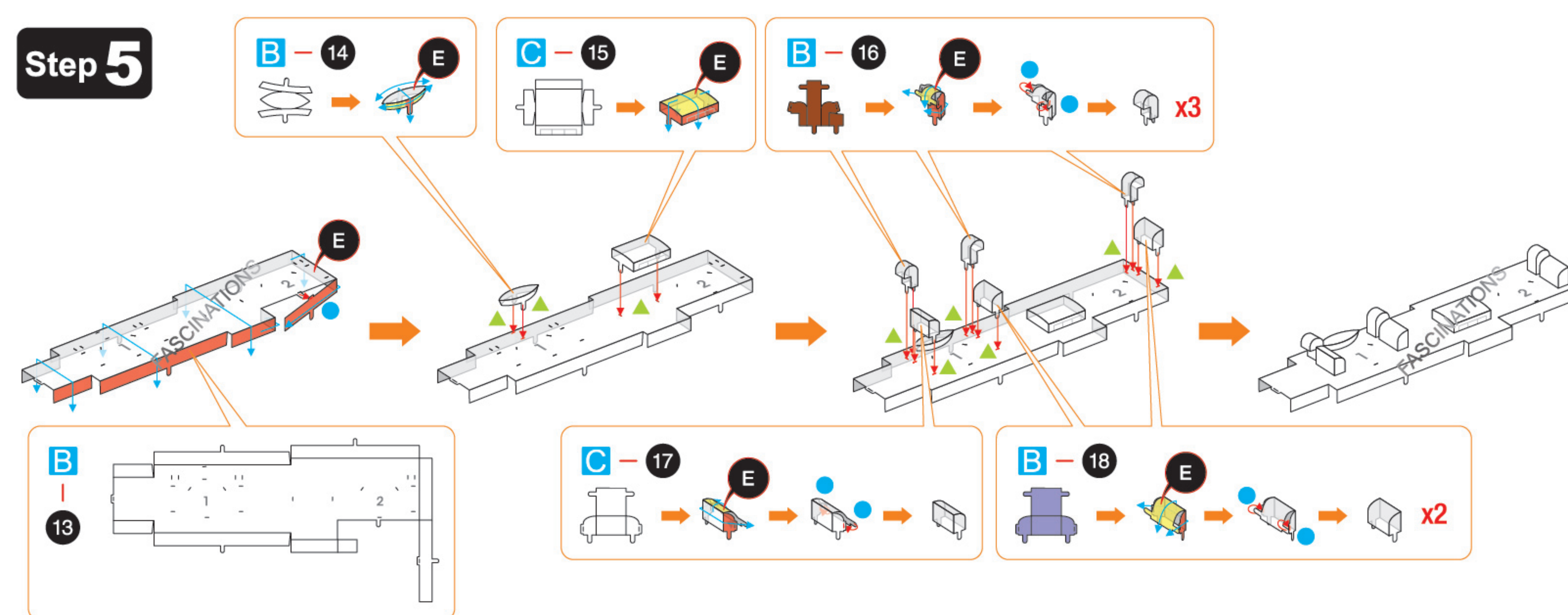
## Step 3



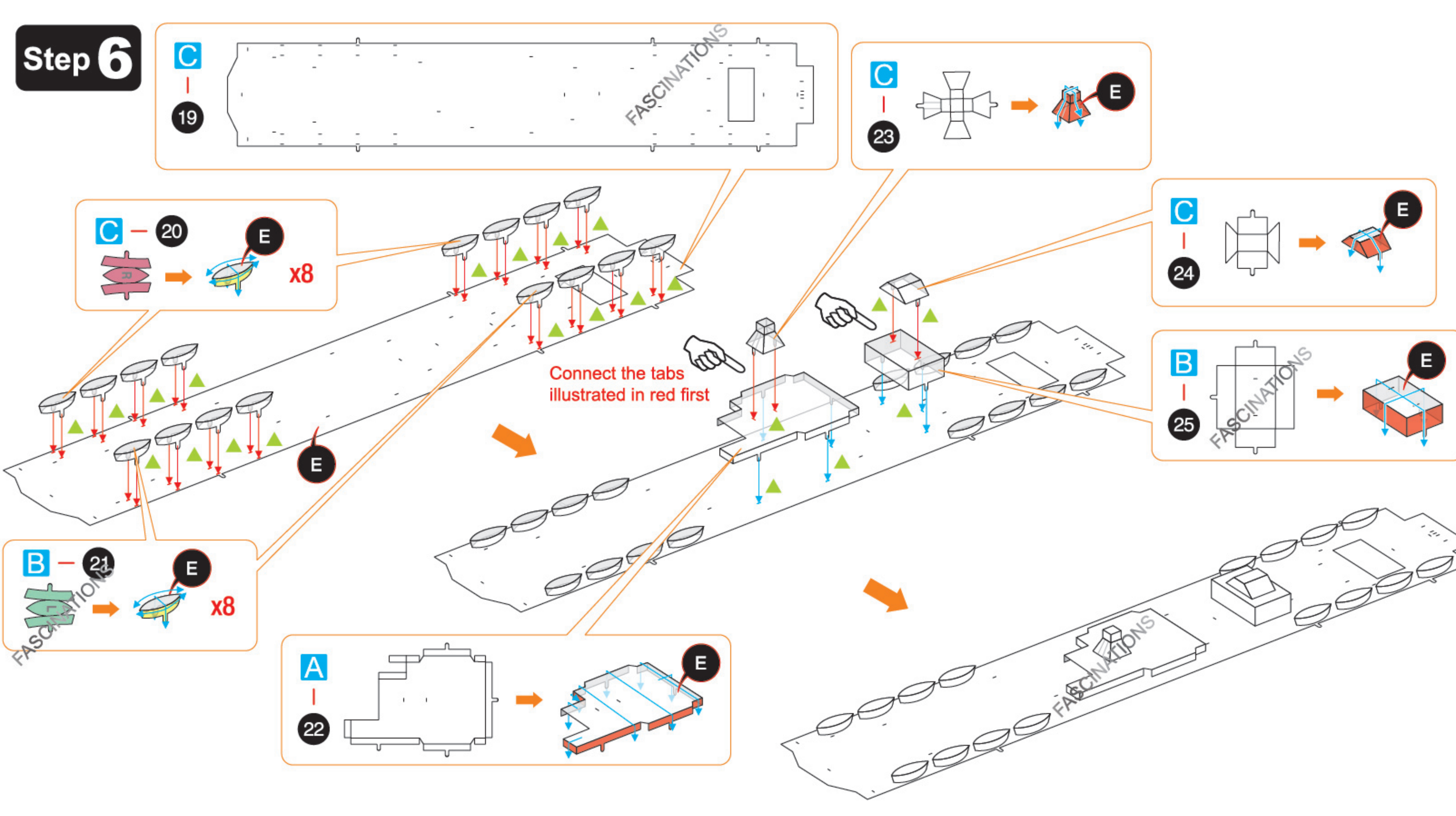
## Step 4



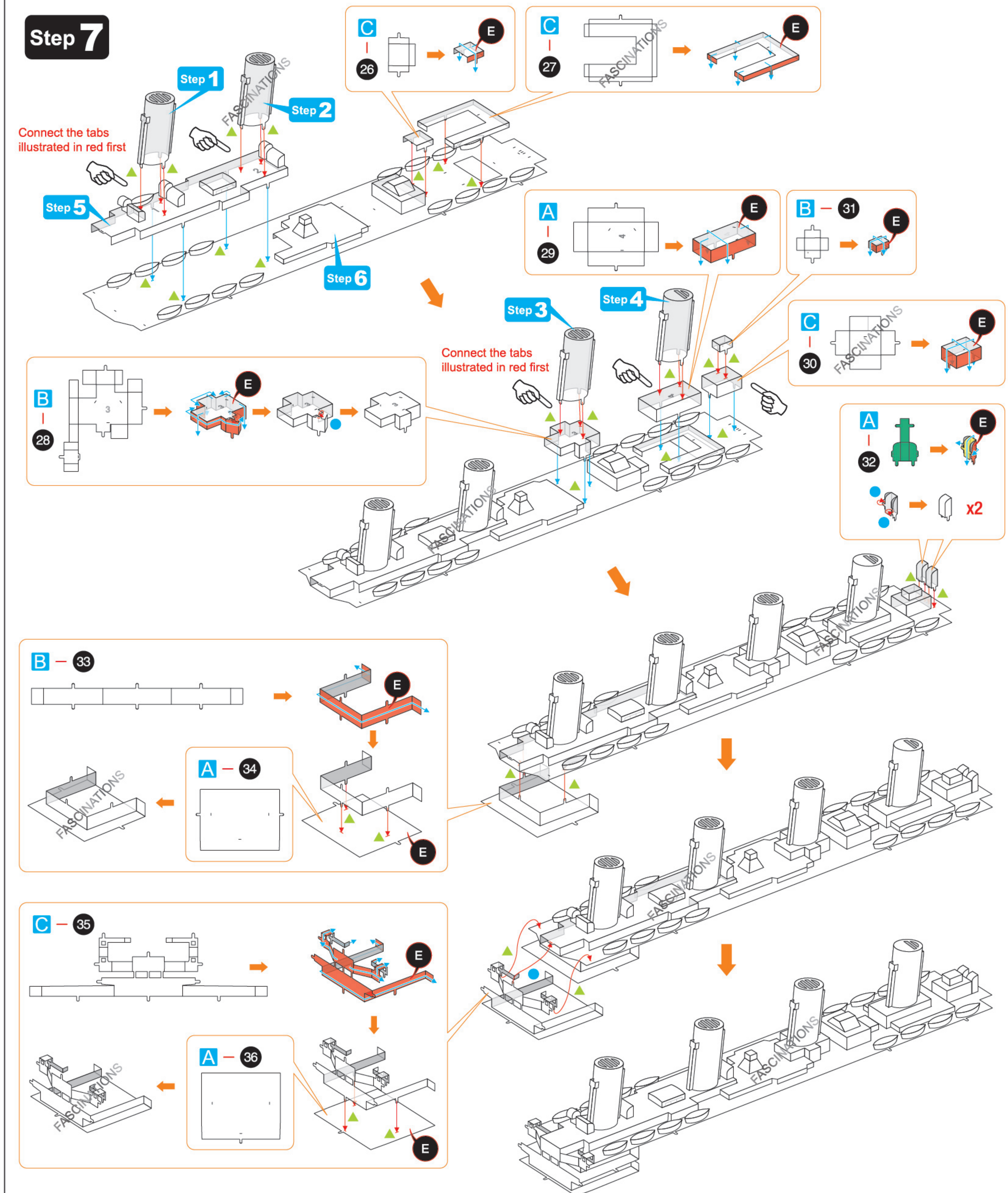
## Step 5



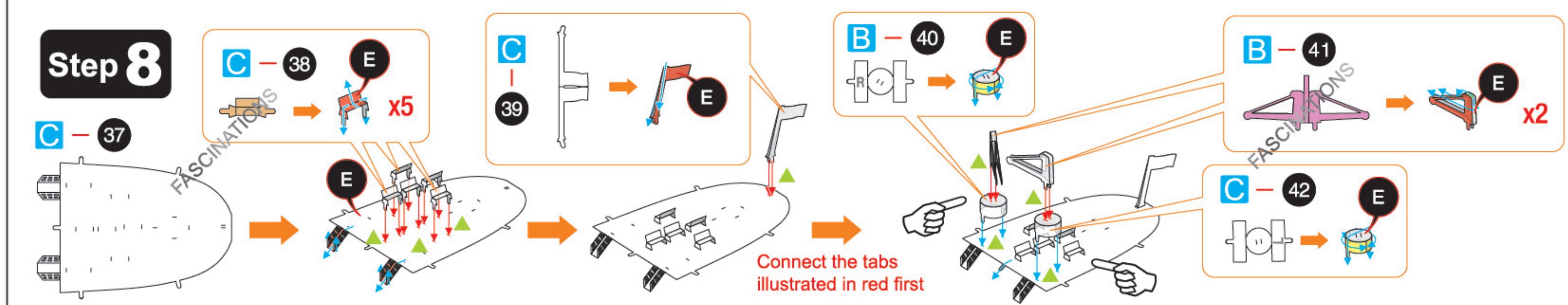
## Step 6



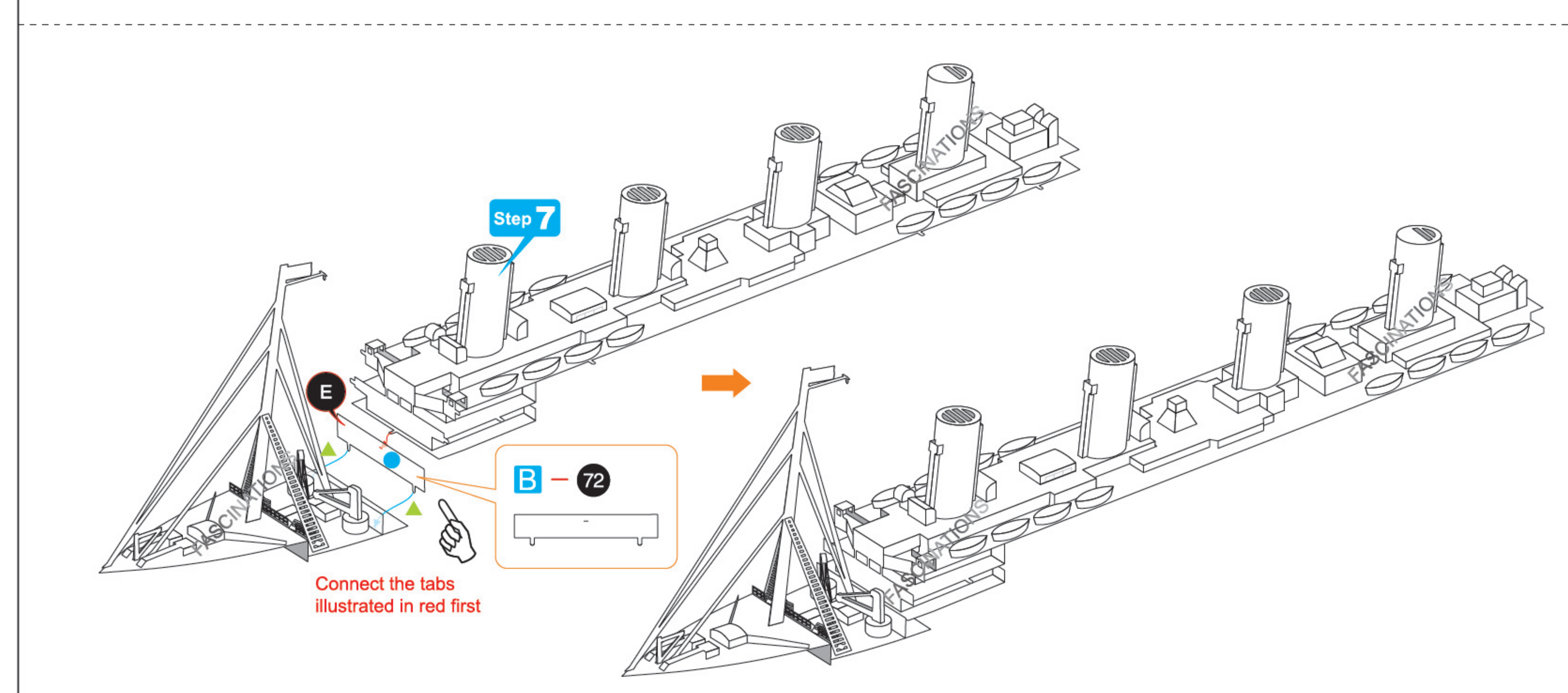
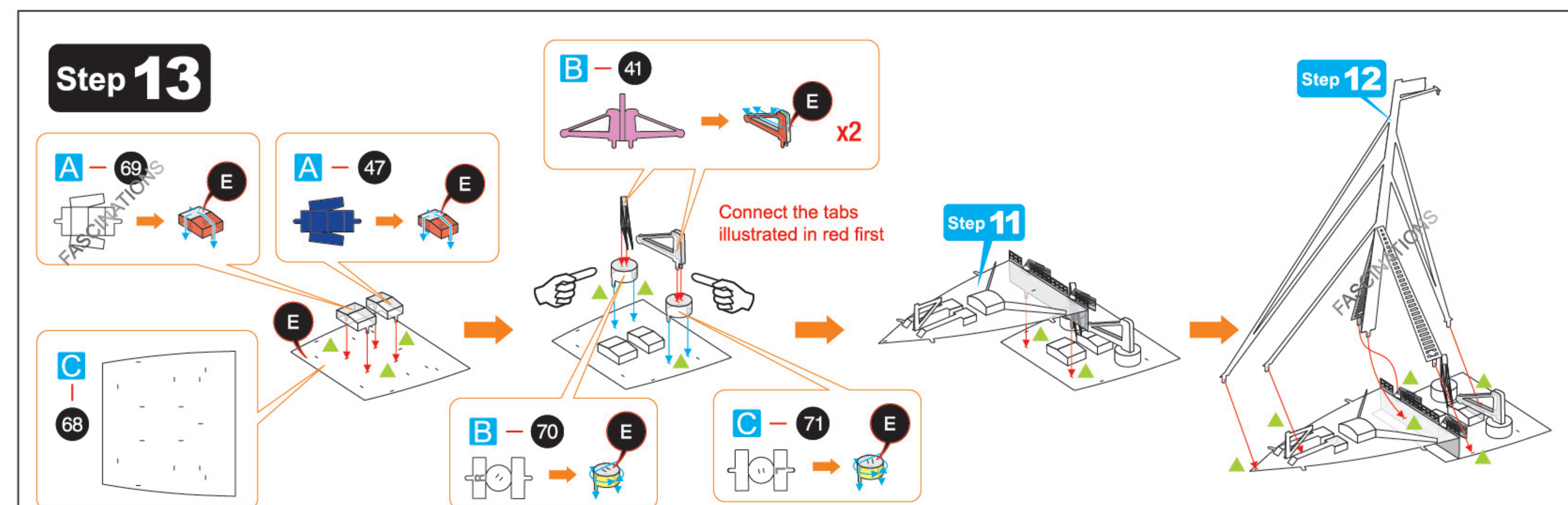
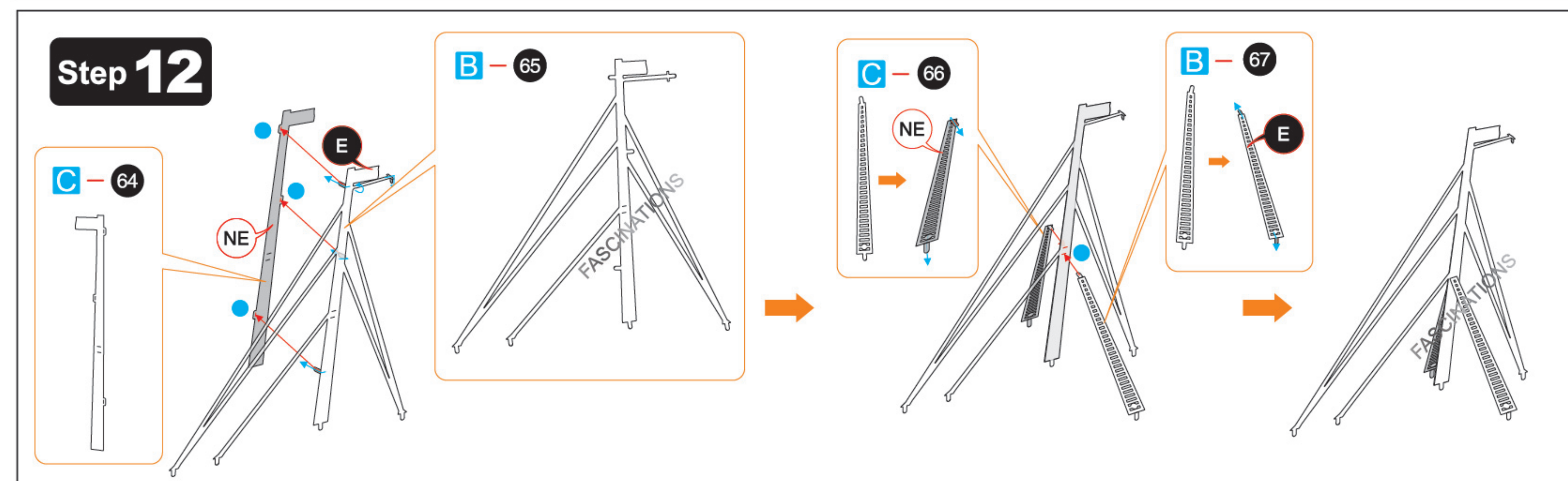
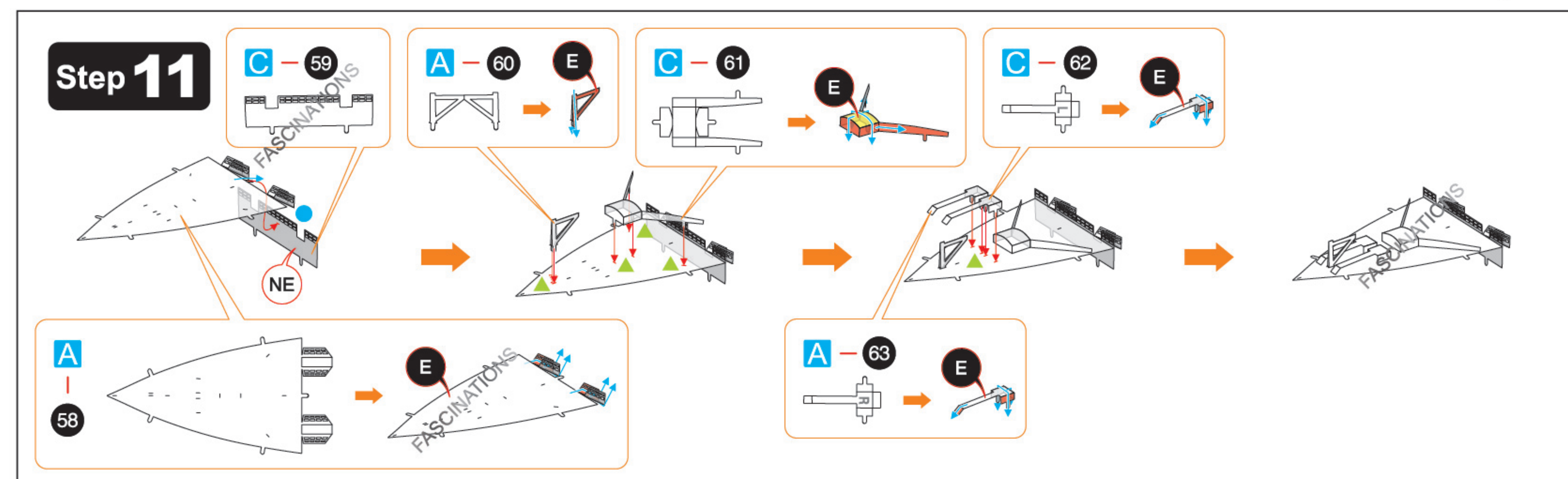
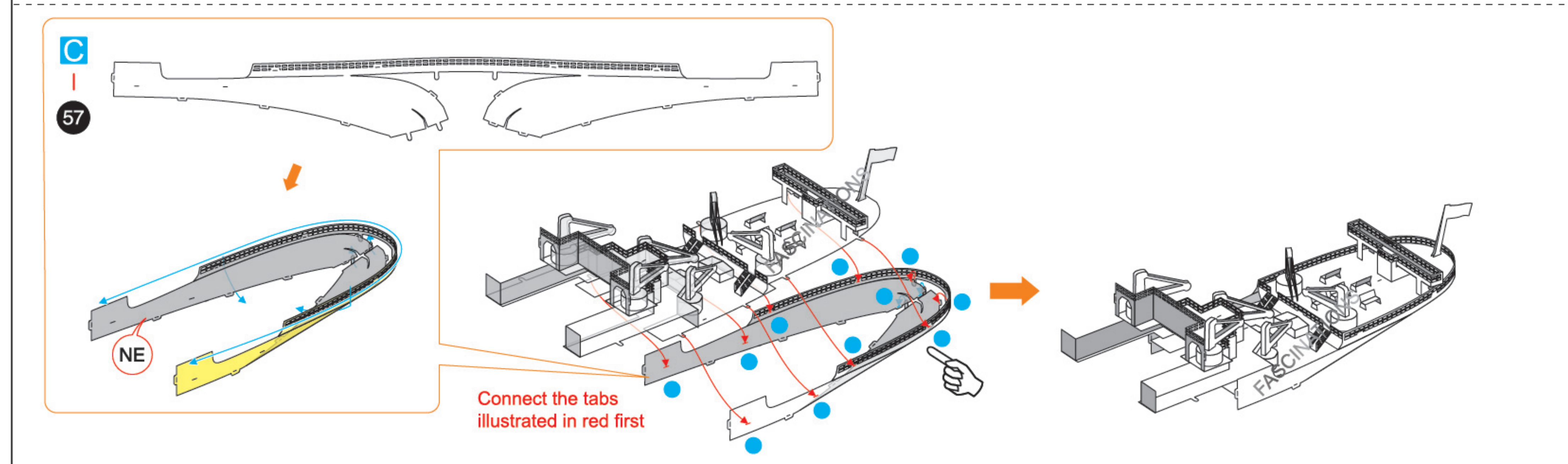
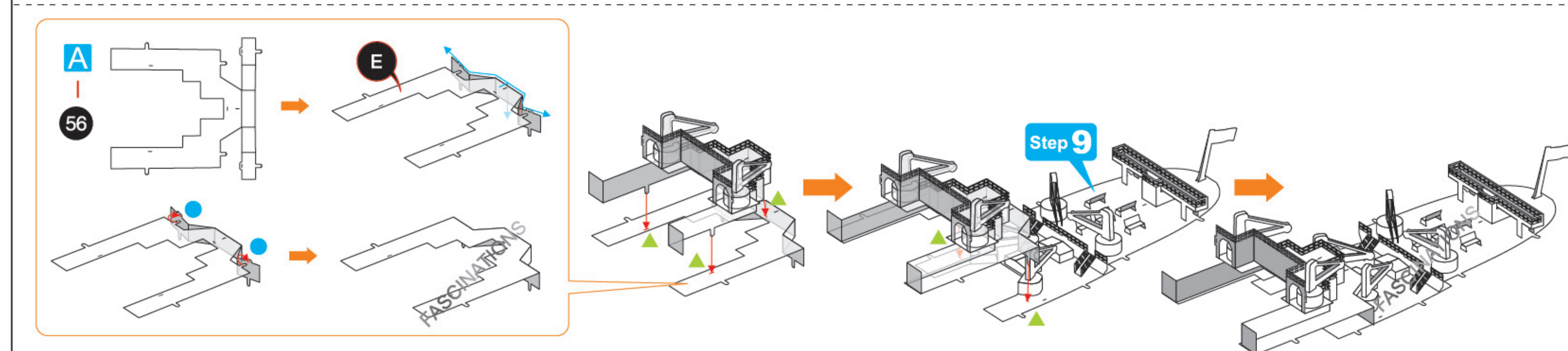
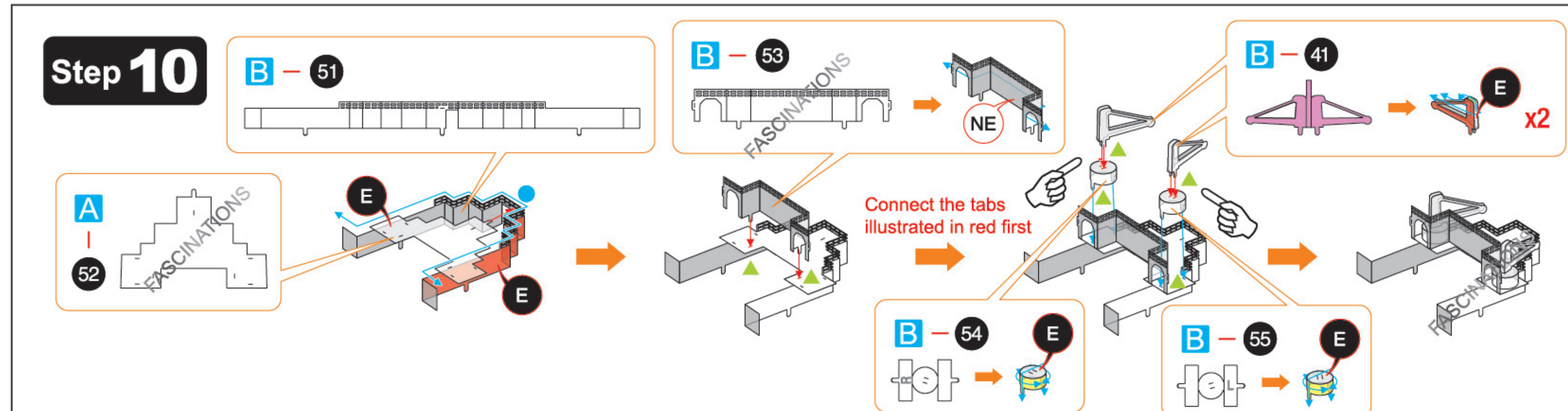
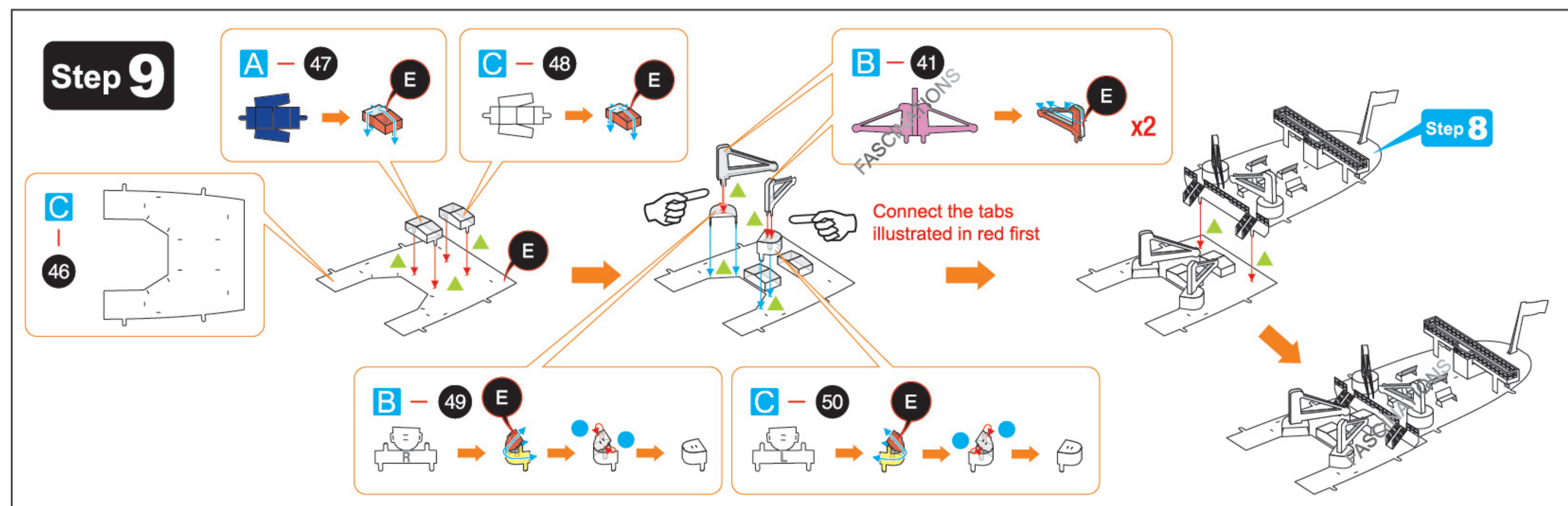
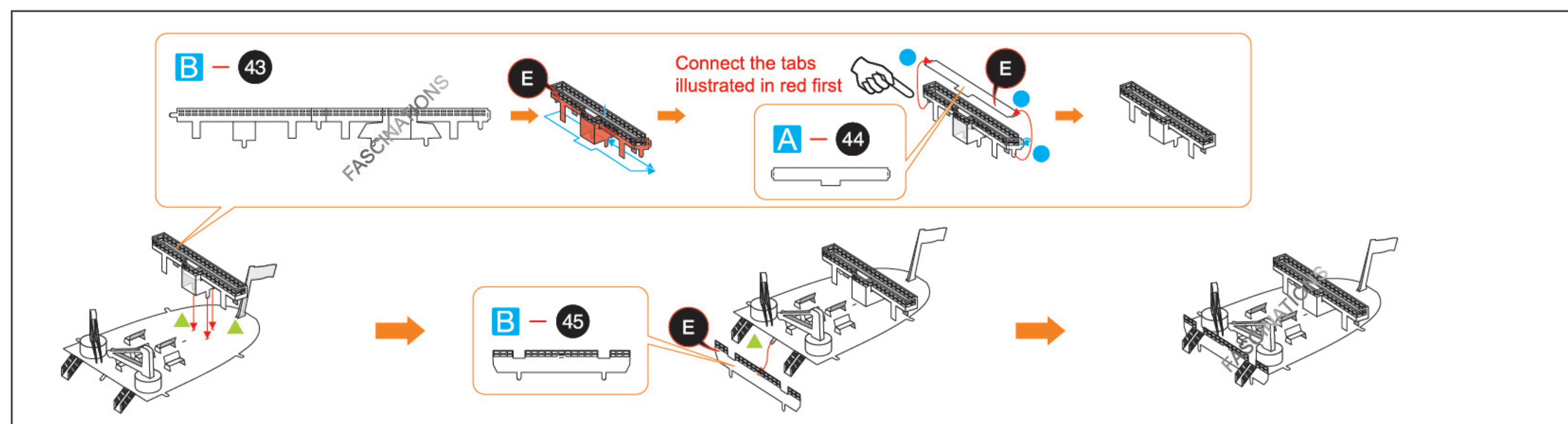
## Step 7



## Step 8

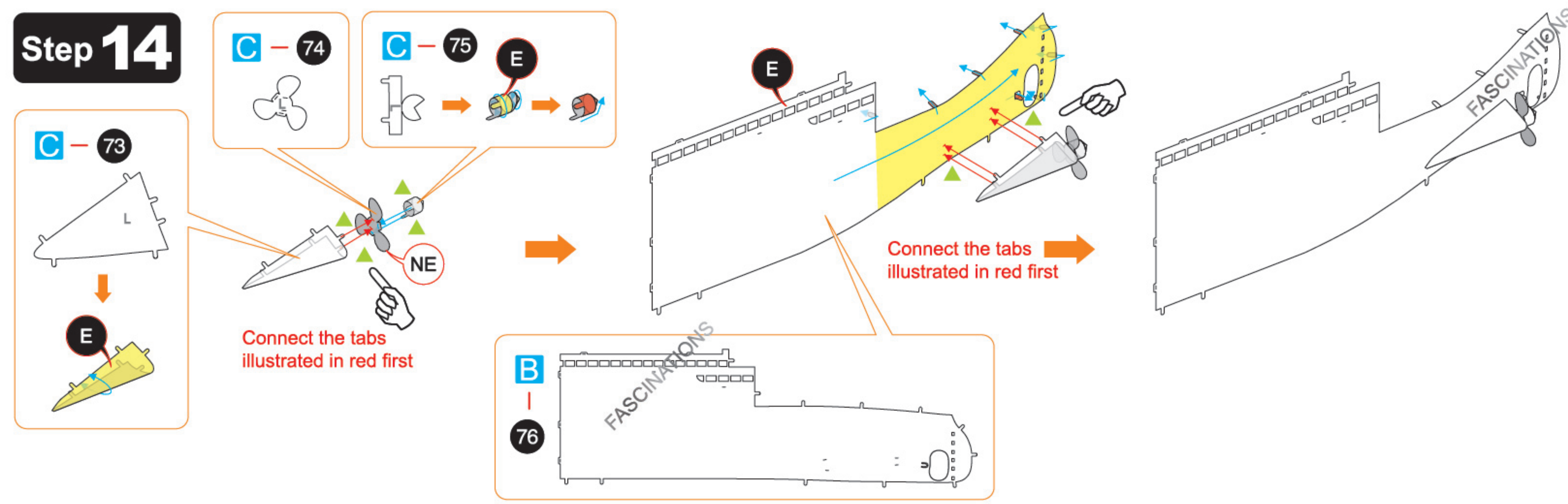




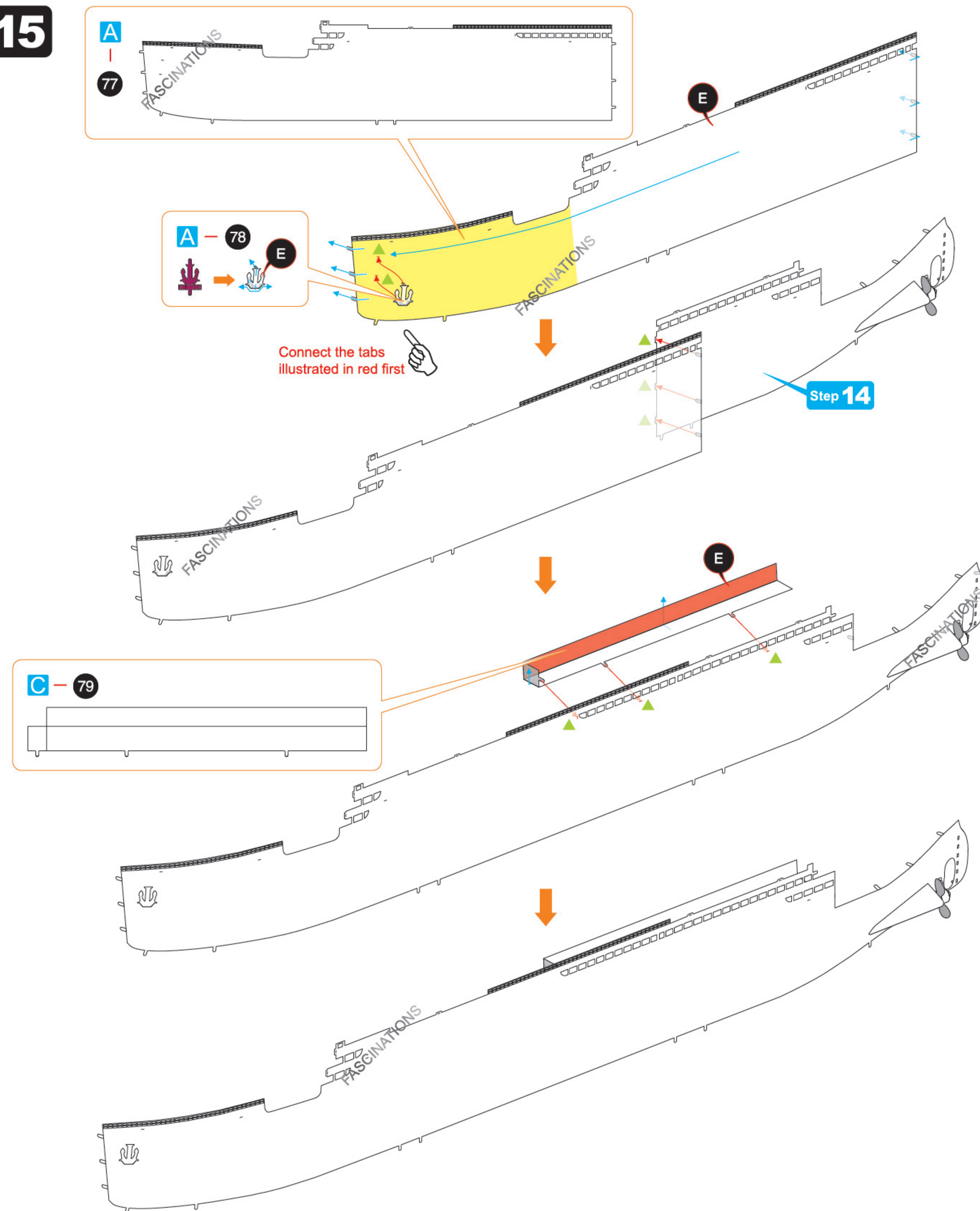




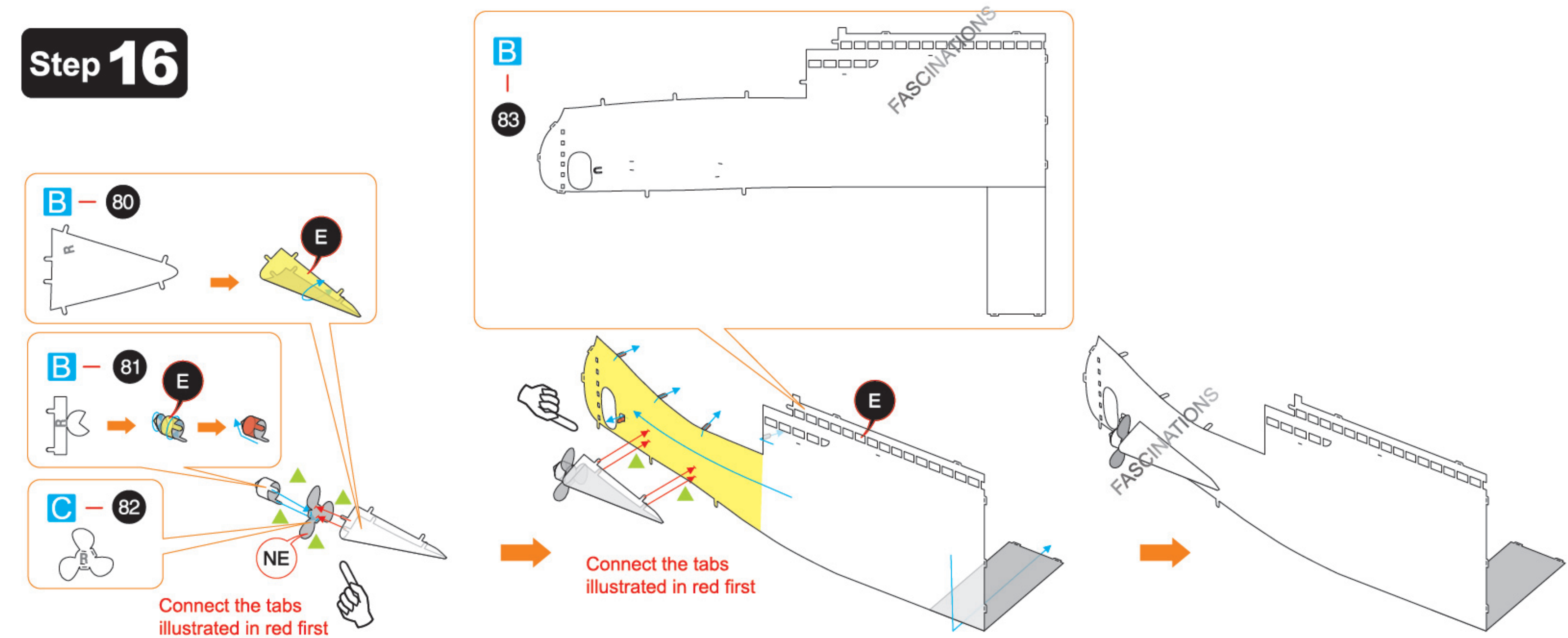
## Step 14



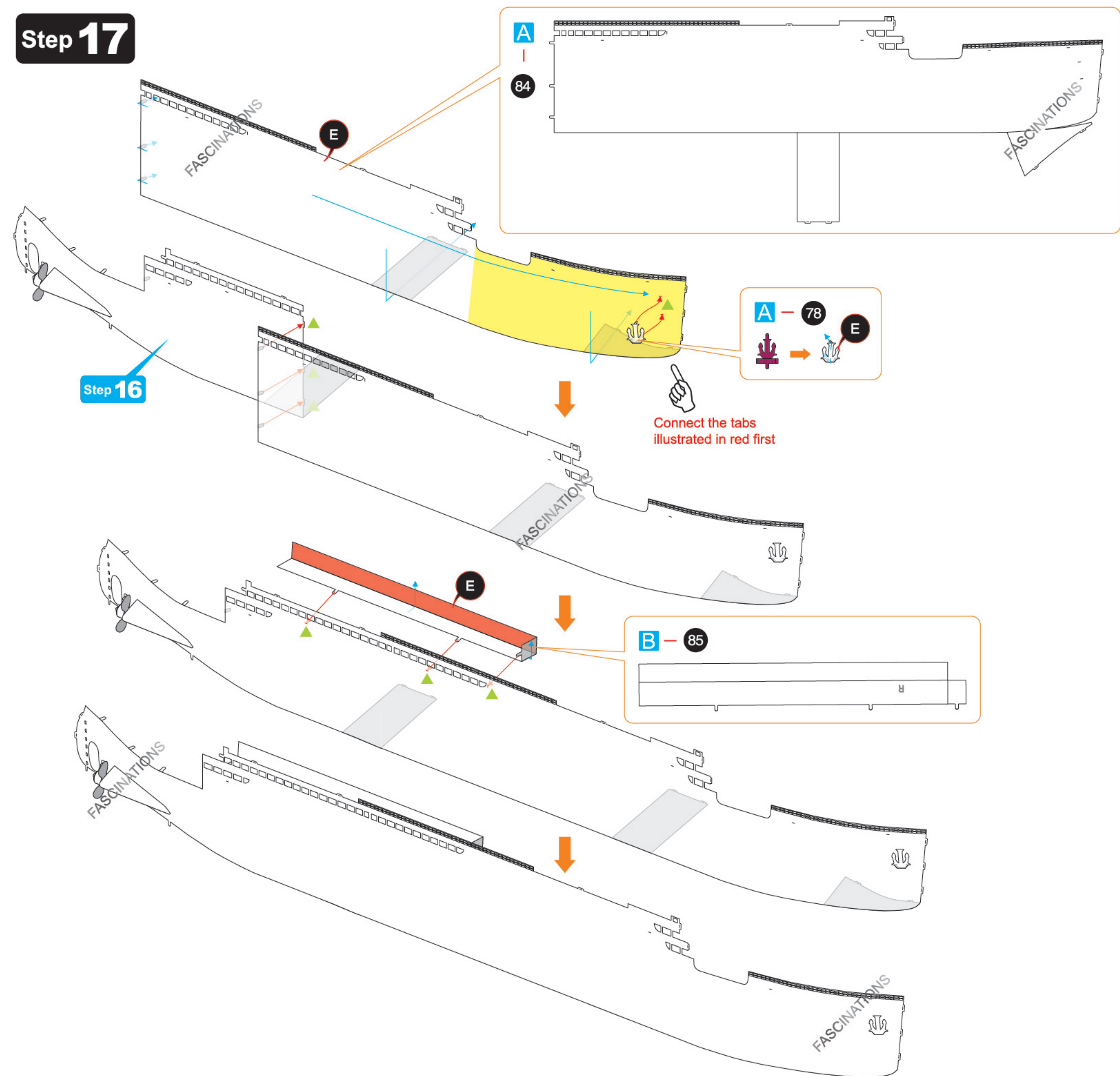
## Step 15



## Step 16

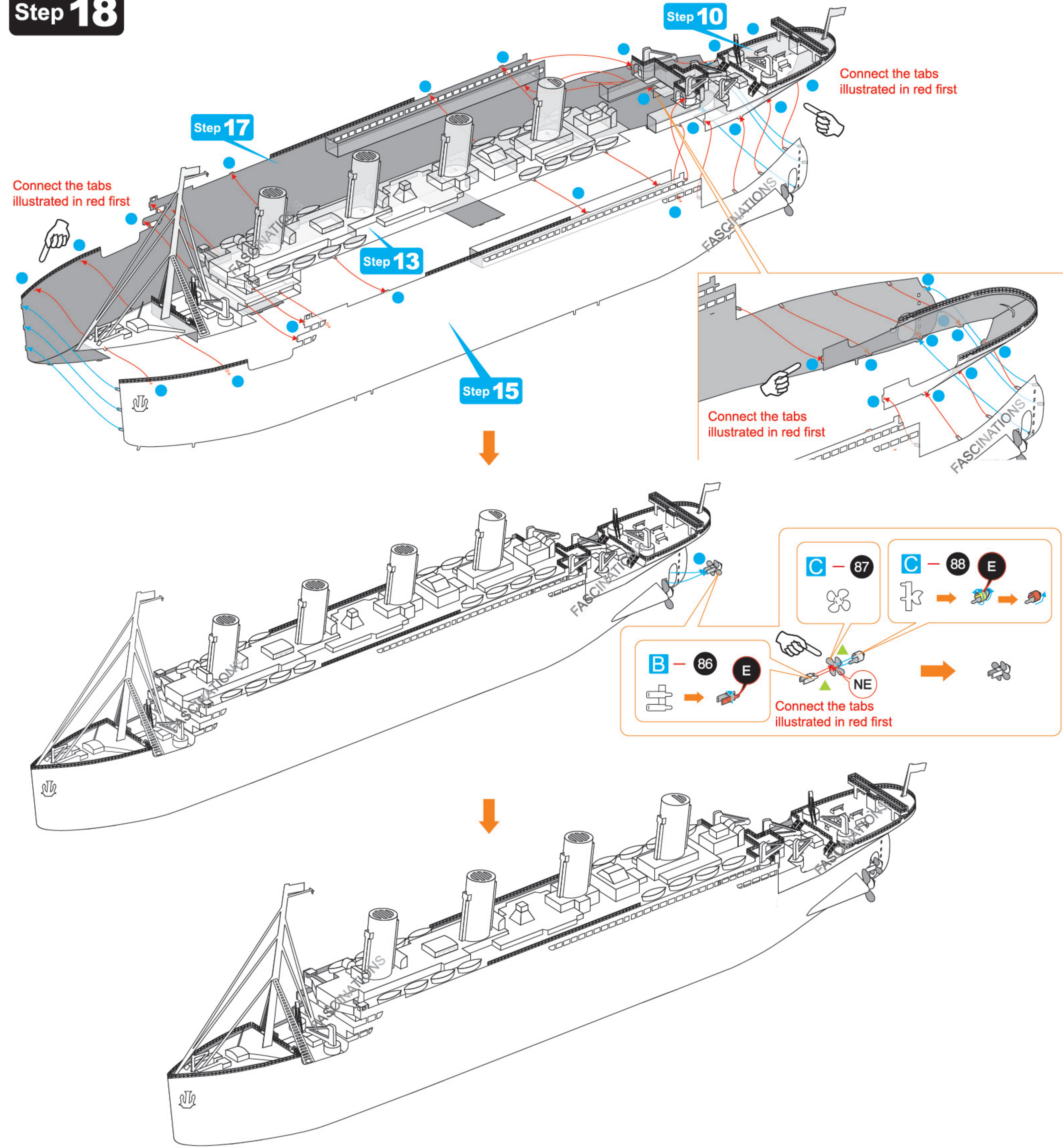


## Step 17

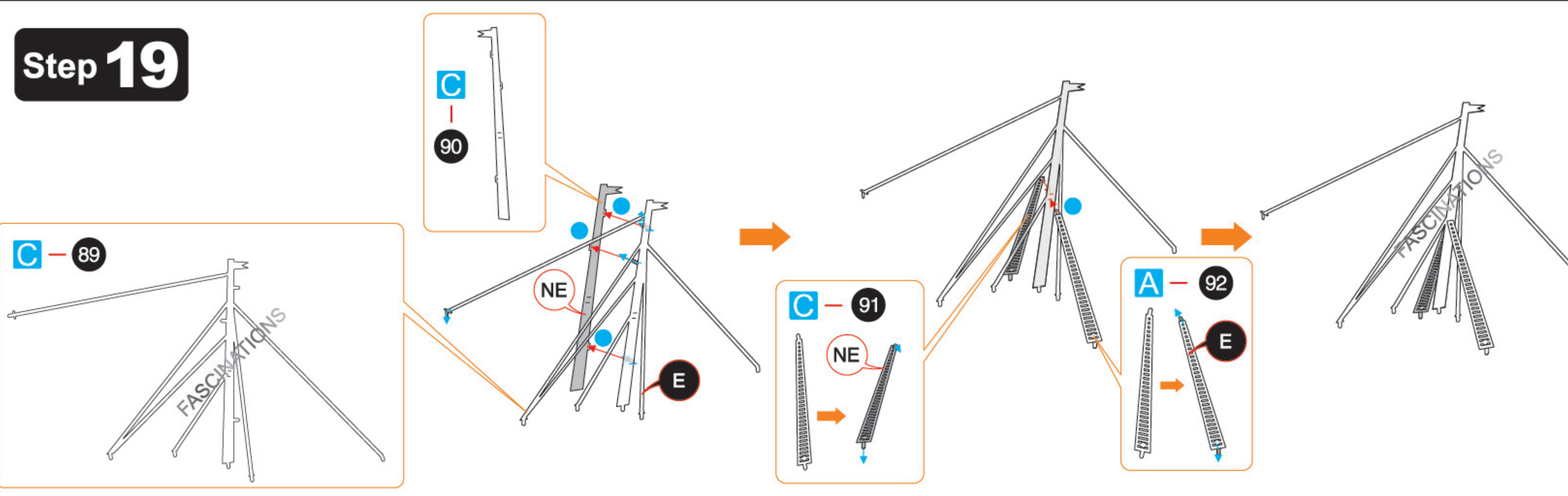




# Step 18



# Step 19



# Step 20

