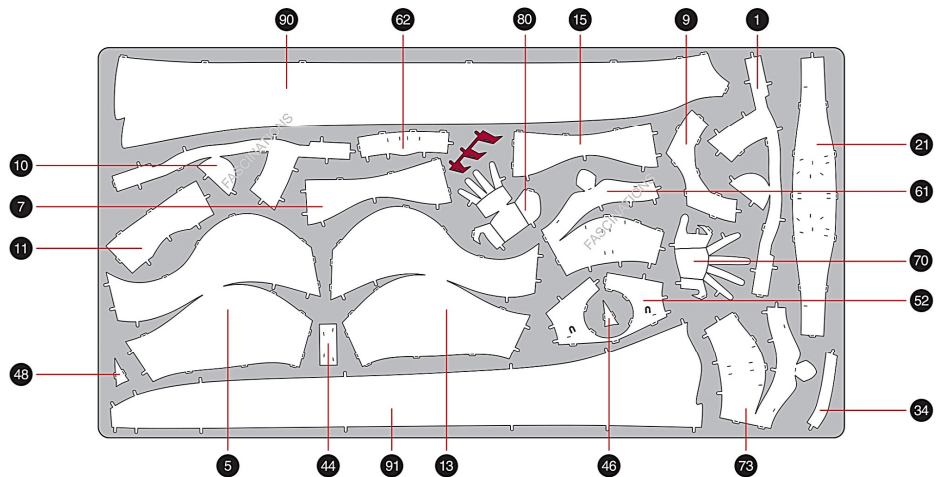


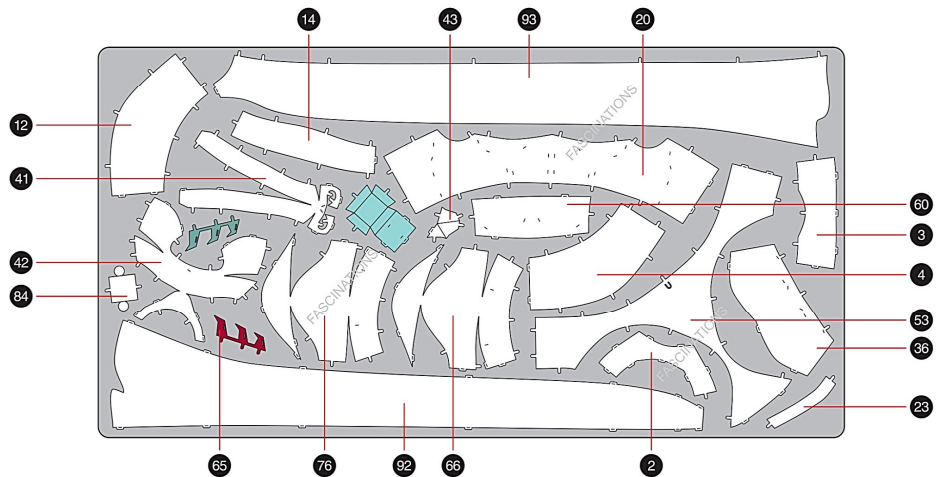
METAL SHEETS

Parts with same color are duplicates

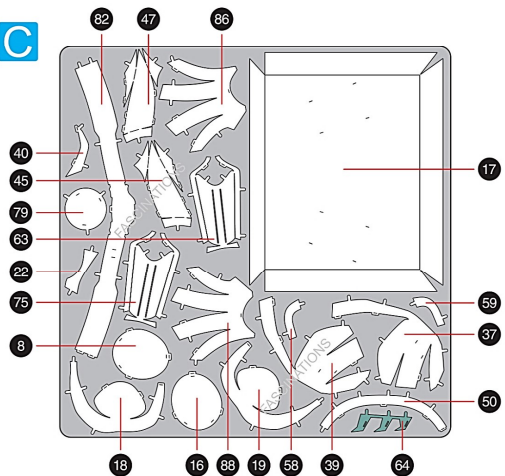
A



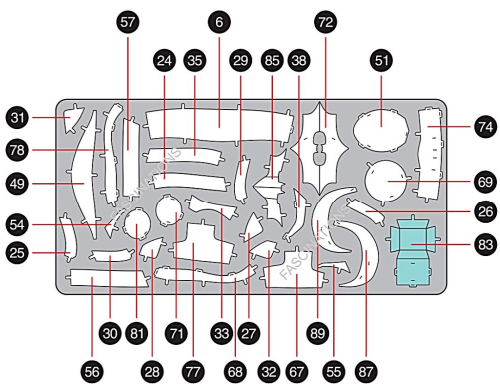
B



C



D



Metal Earth

Premium Series



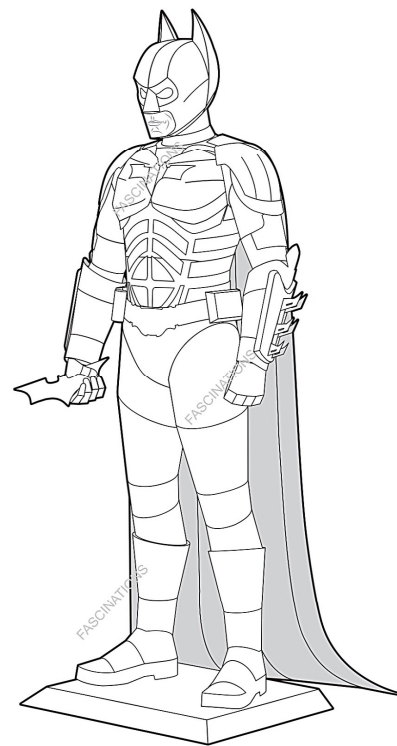
It is highly recommended that you visit www.metalearth.com/360/PS2005 to see the completed model before assembling your own



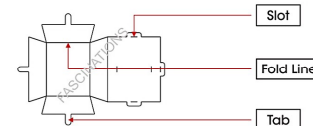
PS2005

THE DARK KNIGHT

TO CREATE THE BEST CONNECTIONS



D - 83



Legends:

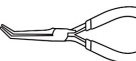
- Engraved/ Color side
- Non - engraved/ Silver side
- Attention point
- Insert tab and bend 90 degrees
- Insert tab and twist 90 degrees

Recommended tools:

- Wire cutters: helpful for taking parts from the metal sheets.



- Tweezers or needle nose pliers: helpful for folding parts, bending and twisting tabs.



Assembly tip:

If needed, slightly twist tabs to hold parts together then untwist and bend them down for a nice finish.

Yellow areas should be curled

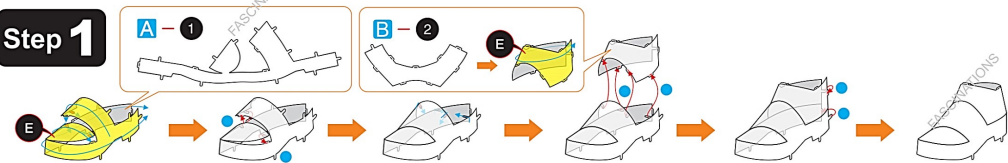
Red areas should be folded



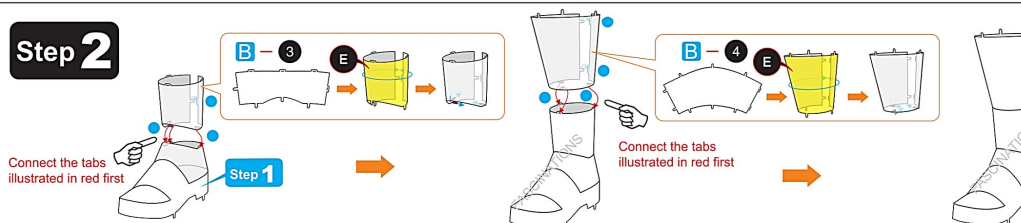
In order to avoid possible injury from sharp edges, please carefully discard the metal sheets after parts have been removed.

ASSEMBLY STEPS

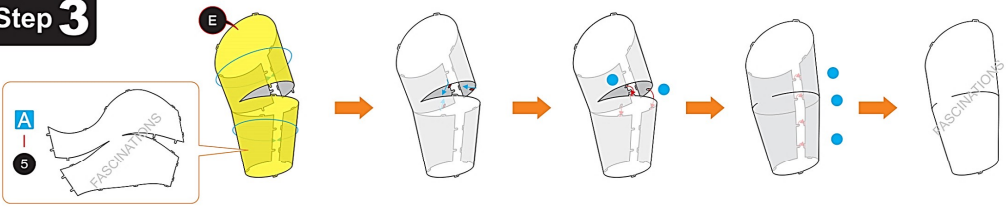
Step 1



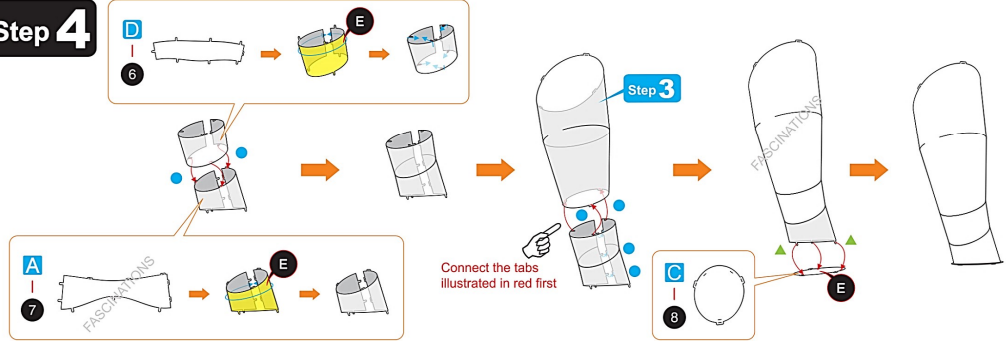
Step 2



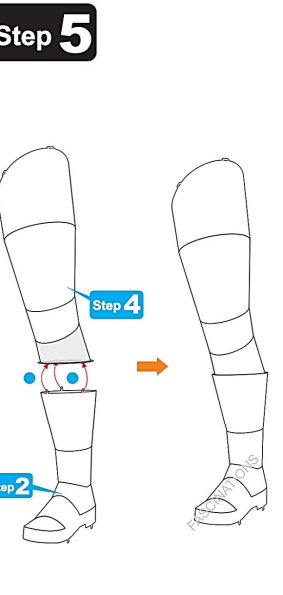
Step 3



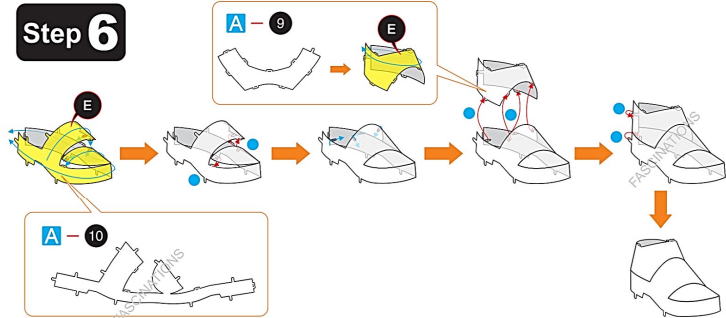
Step 4



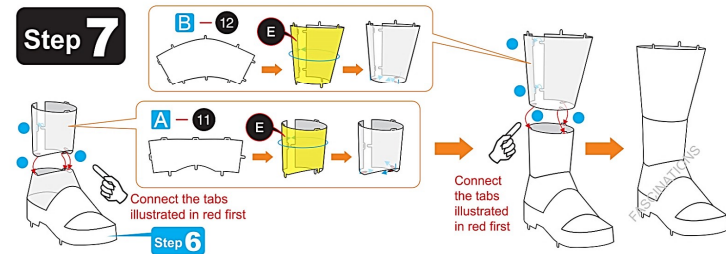
Step 5



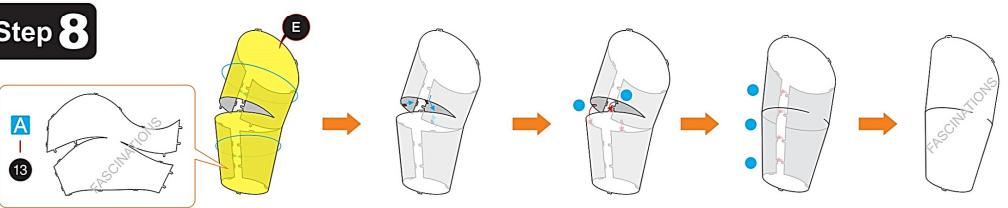
Step 6



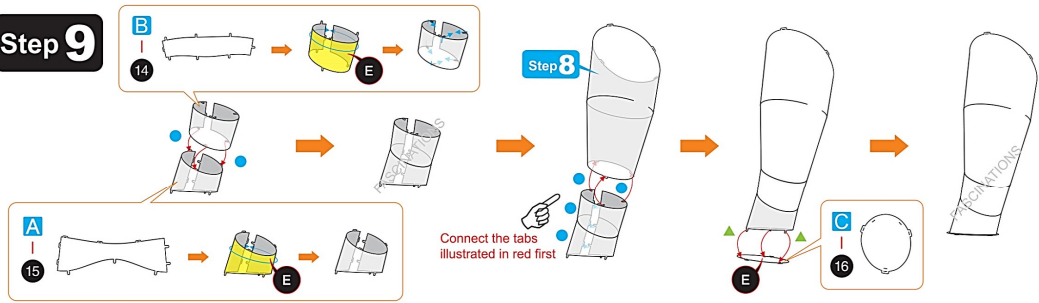
Step 7



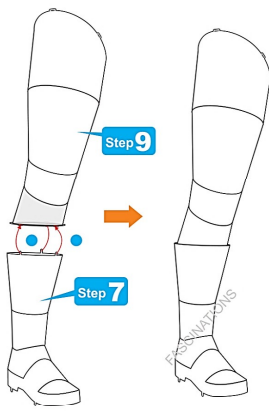
Step 8



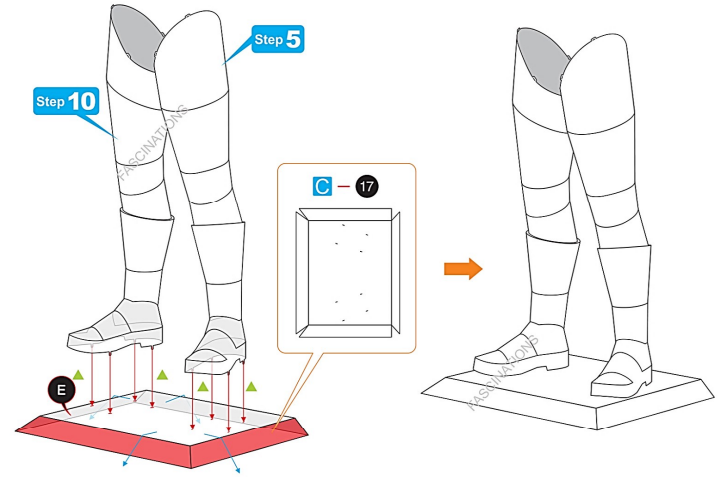
Step 9



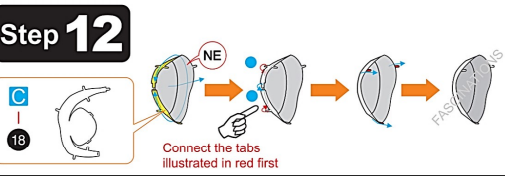
Step 10



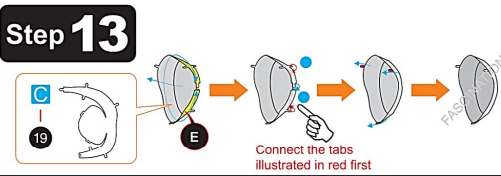
Step 11



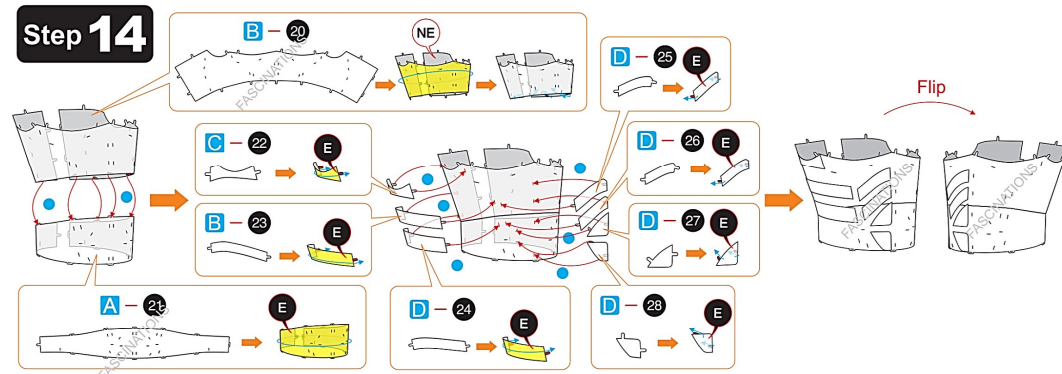
Step 12



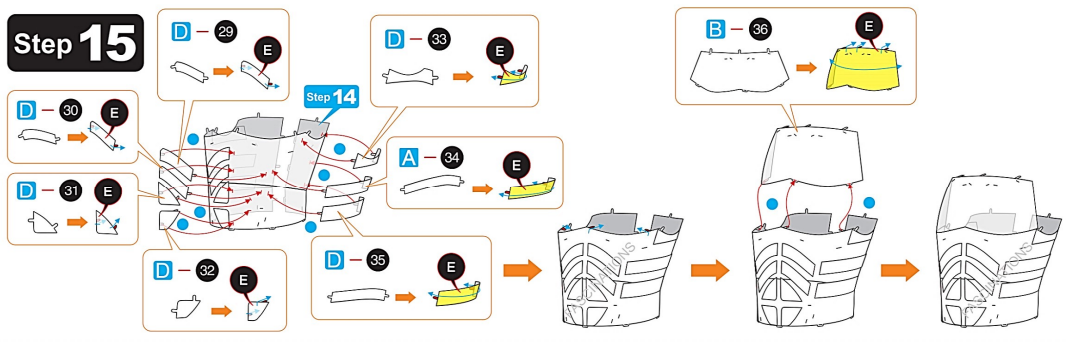
Step 13



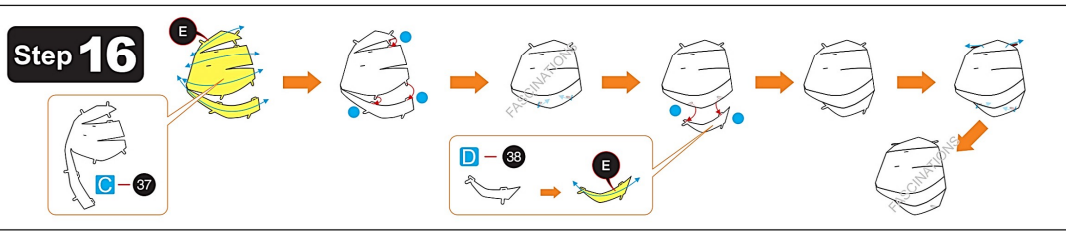
Step 14



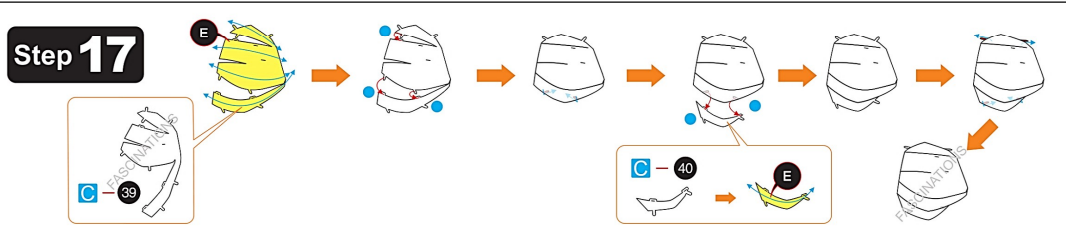
Step 15



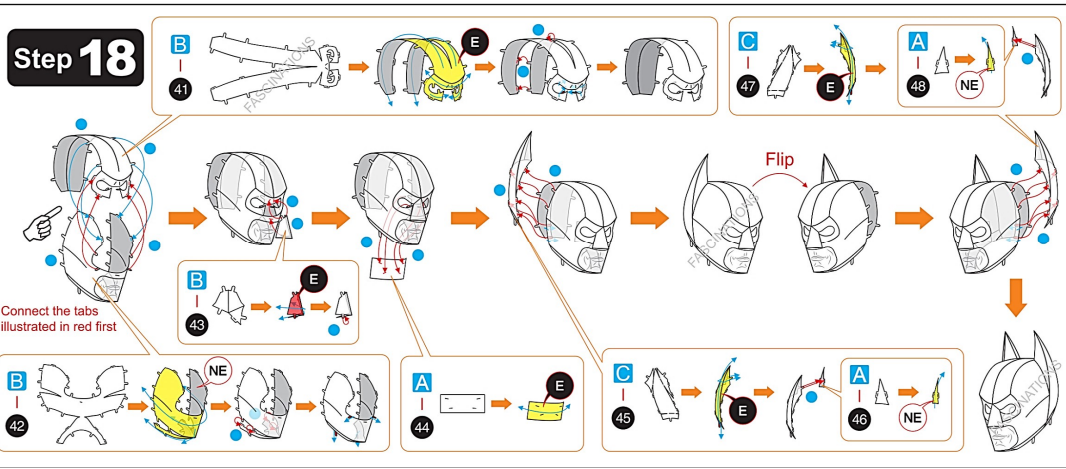
Step 16



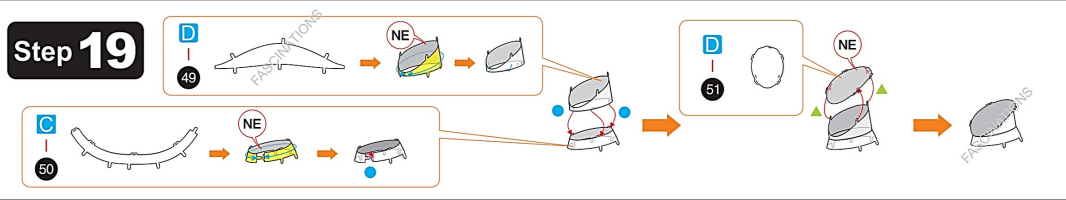
Step 17



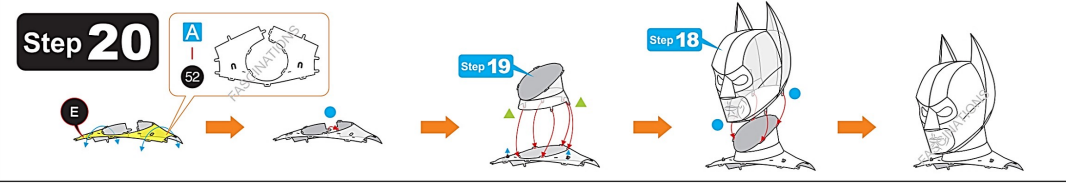
Step 18



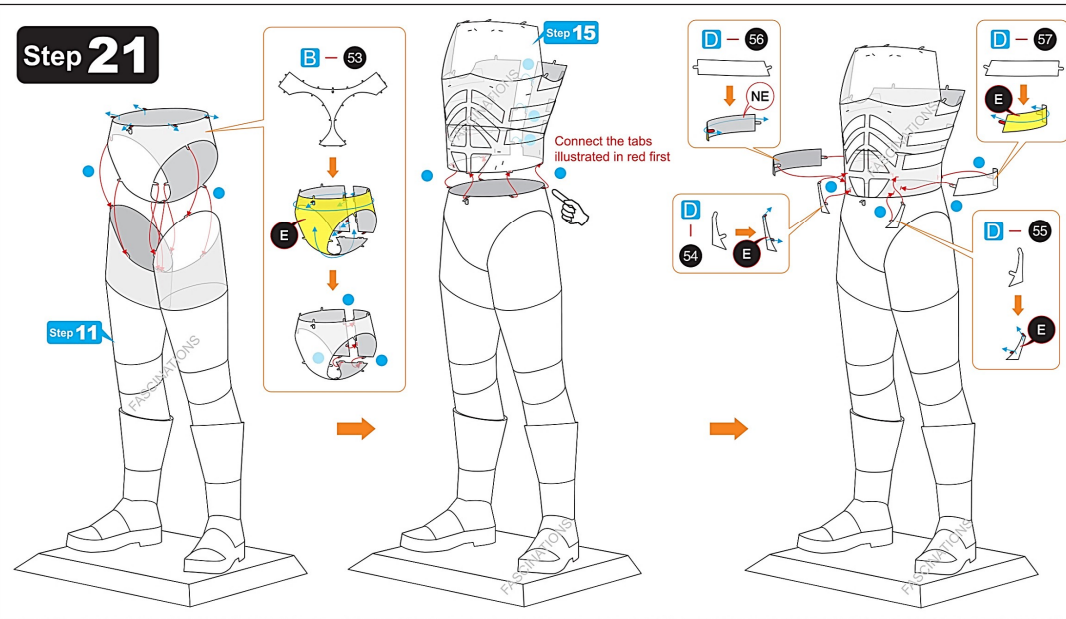
Step 19



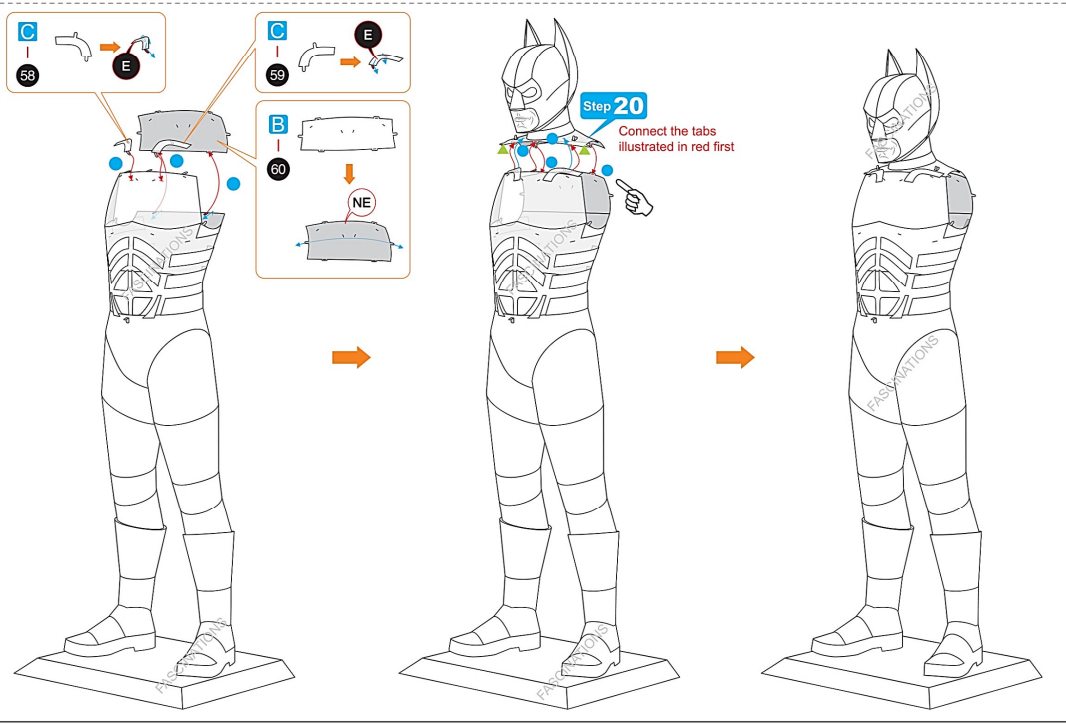
Step 20



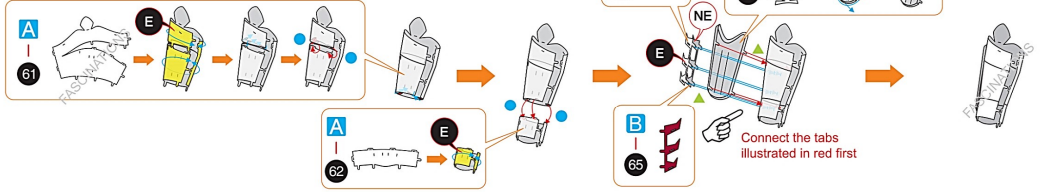
Step 21



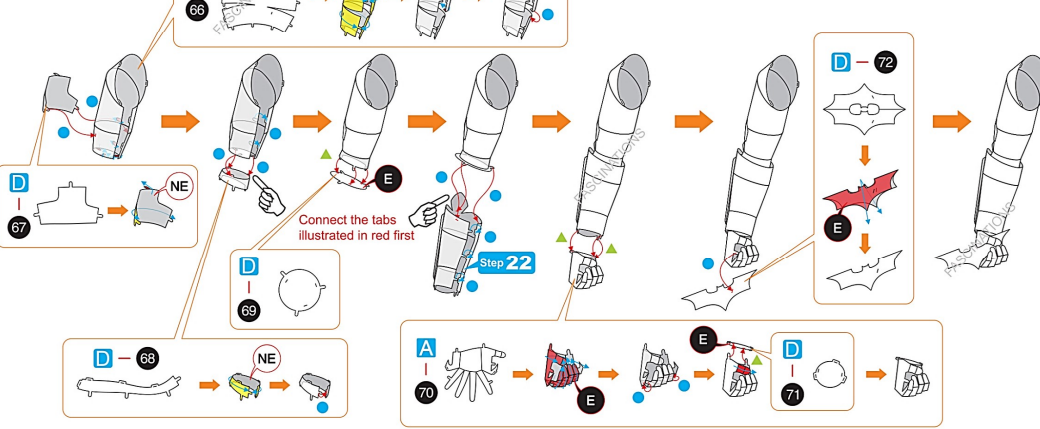
Step 20



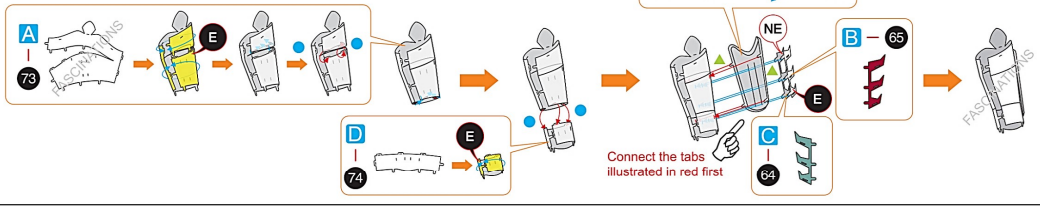
Step 22



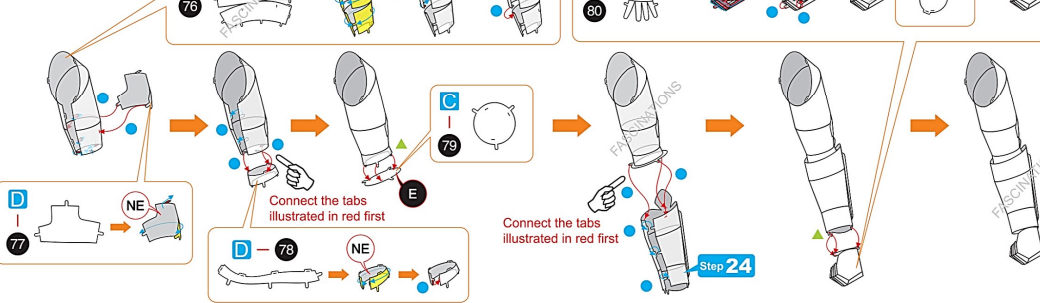
Step 23



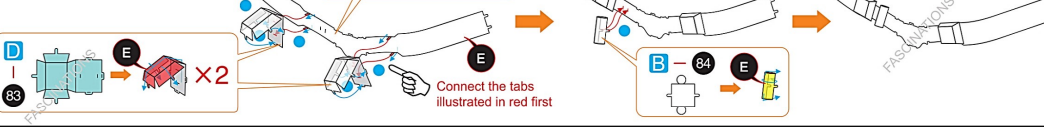
Step 24



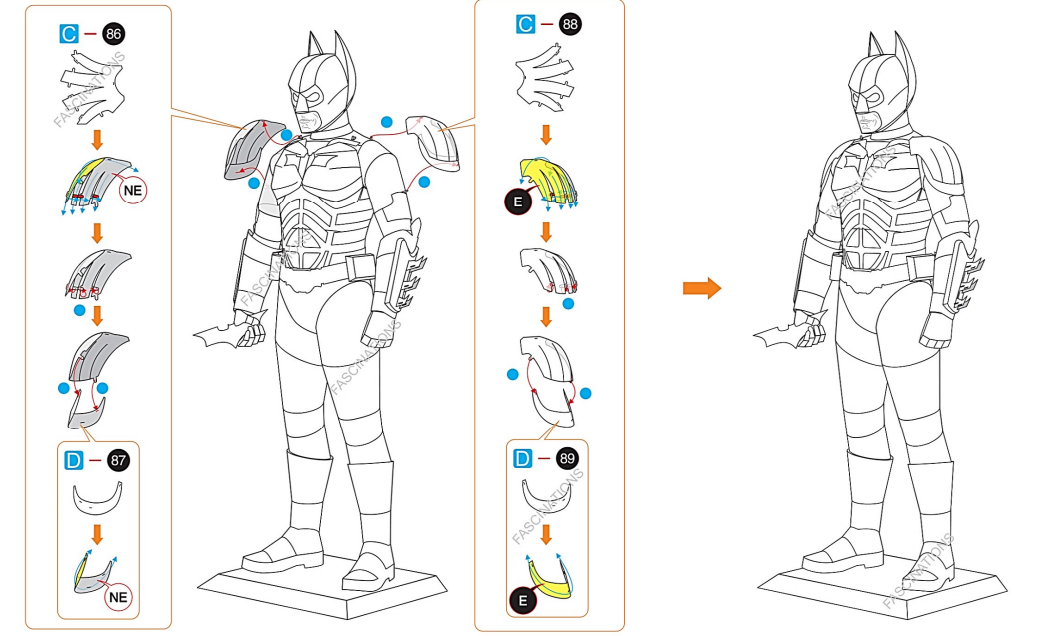
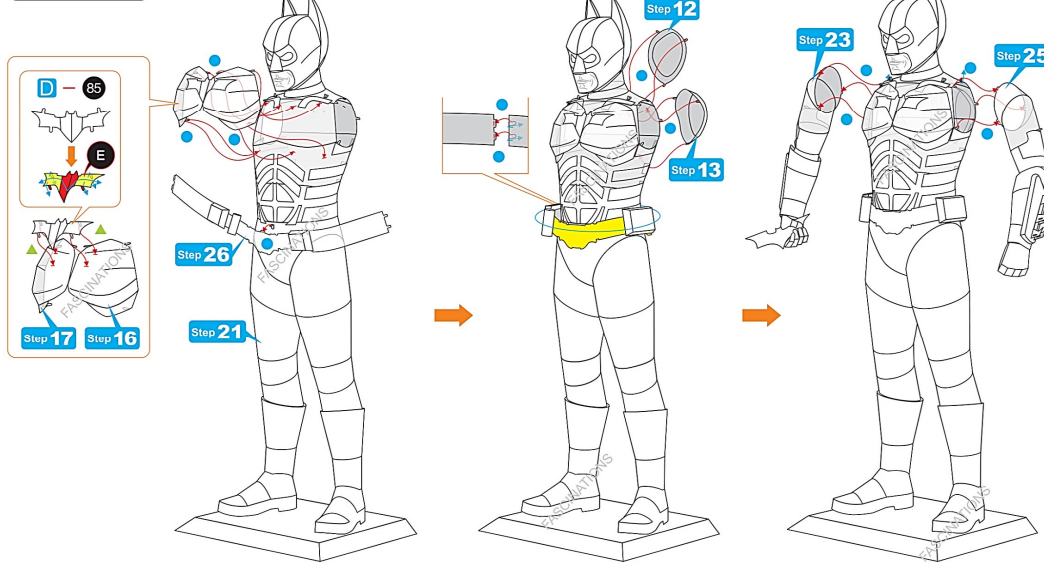
Step 25



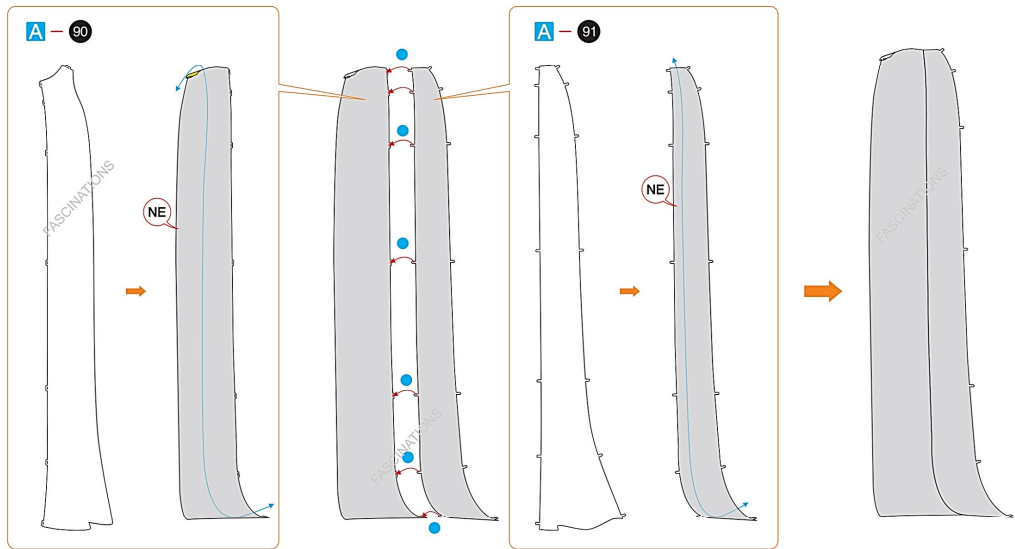
Step 26



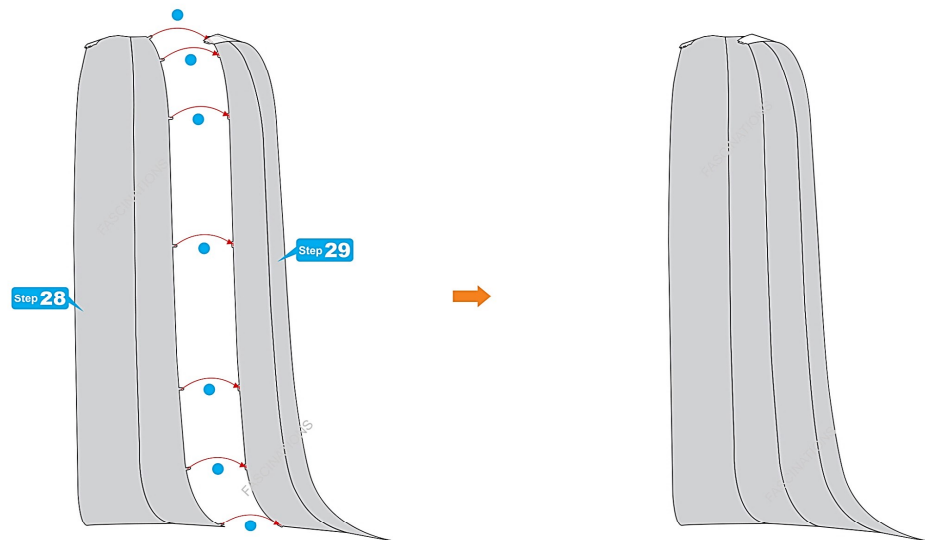
Step 27



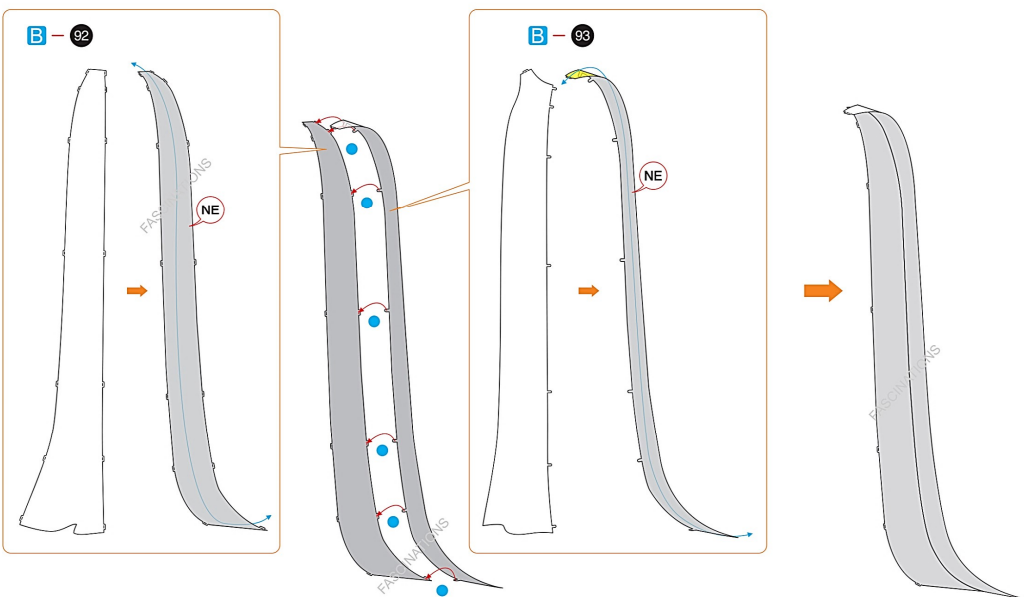
Step 28



Step 30



Step 29



Step 31

