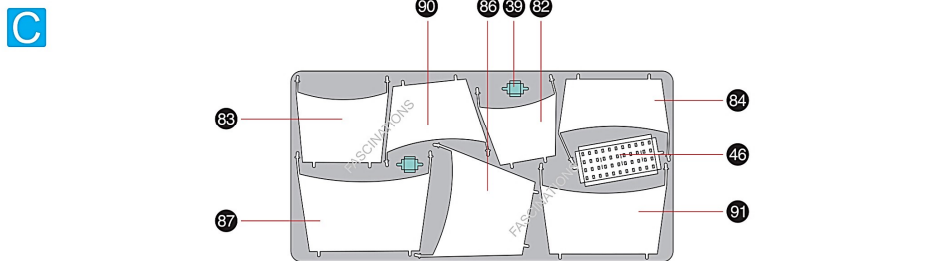
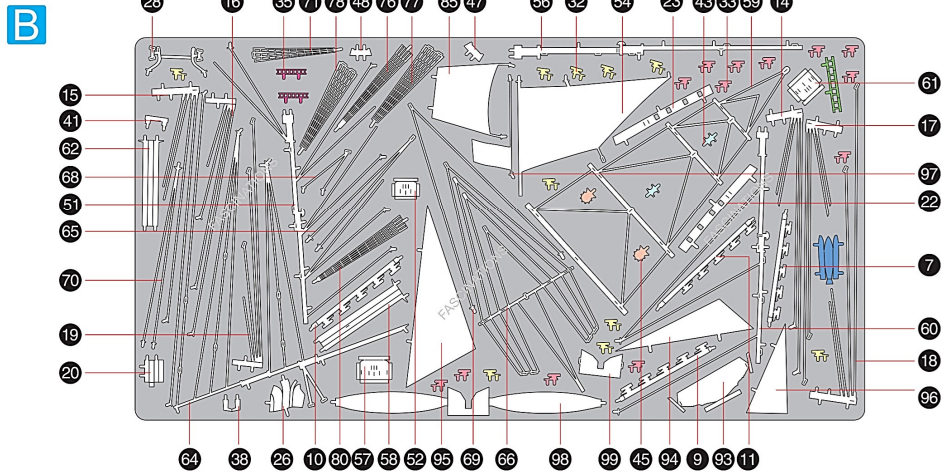
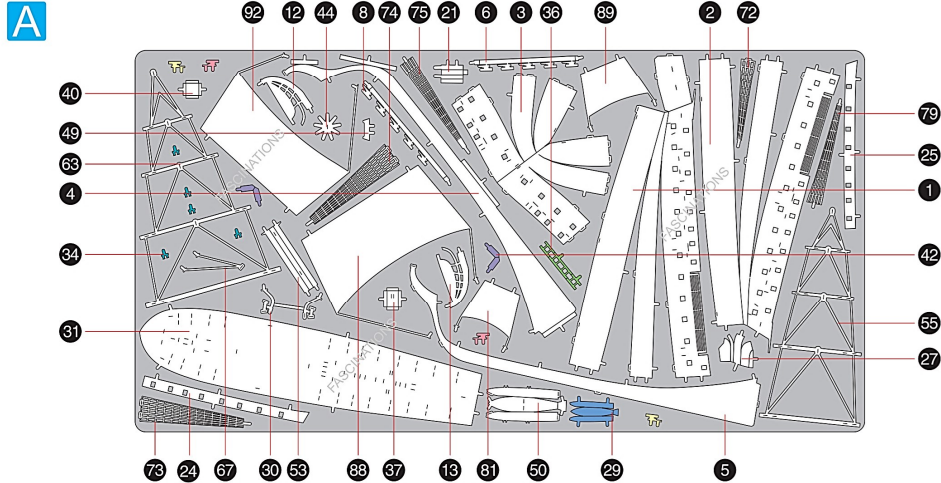


METAL SHEETS

Parts with same color are duplicates



Metal Earth

360° view

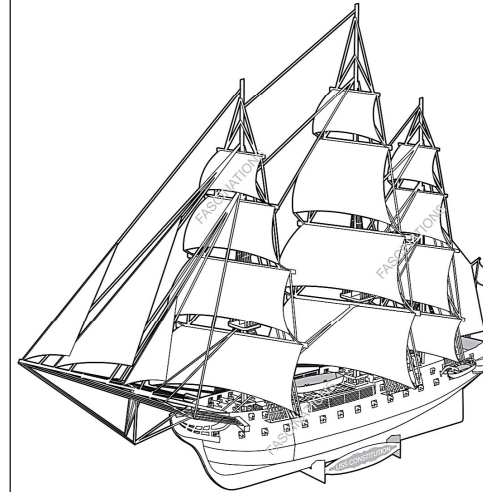


It is highly recommended that you visit www.metalearth.com/360/PS2002 to see the completed model before assembling your own

Premium Series

PS2002 USS CONSTITUTION

TO CREATE THE BEST CONNECTIONS



A - 50



Legends:

- Engraved/ Color side
- Non - engraved/ Silver side
- Attention point
- Insert tab and bend 90 degrees
- Insert tab and twist 90 degrees

Recommended tools:

- Wire cutters: helpful for taking parts from the metal sheets.



- Tweezers or needle nose pliers: helpful for folding parts, bending and twisting tabs.



Assembly tip:

If needed, slightly twist tabs to hold parts together then untwist and bend them down for a nice finish.

Yellow areas should be curled

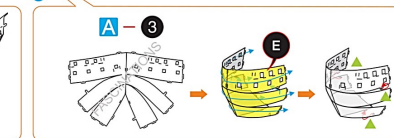
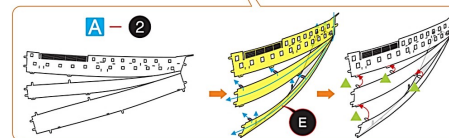
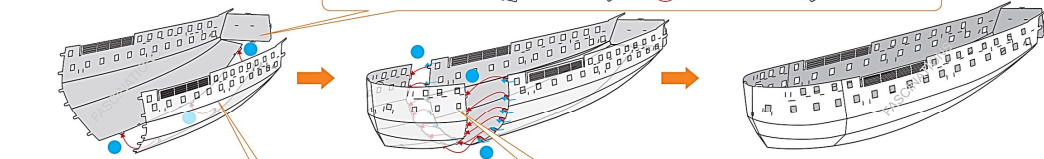
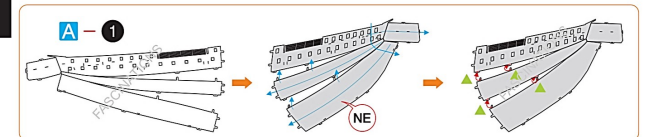
Red areas should be folded

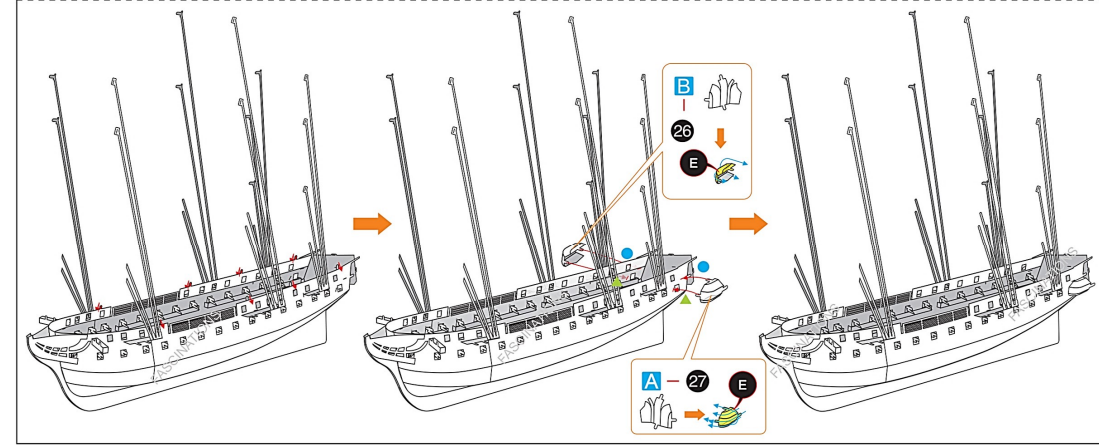
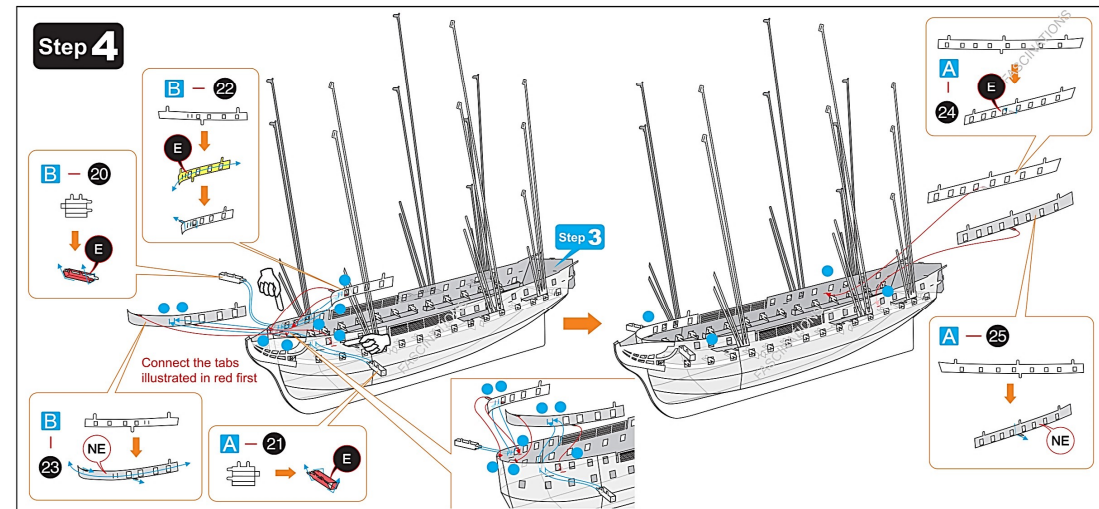
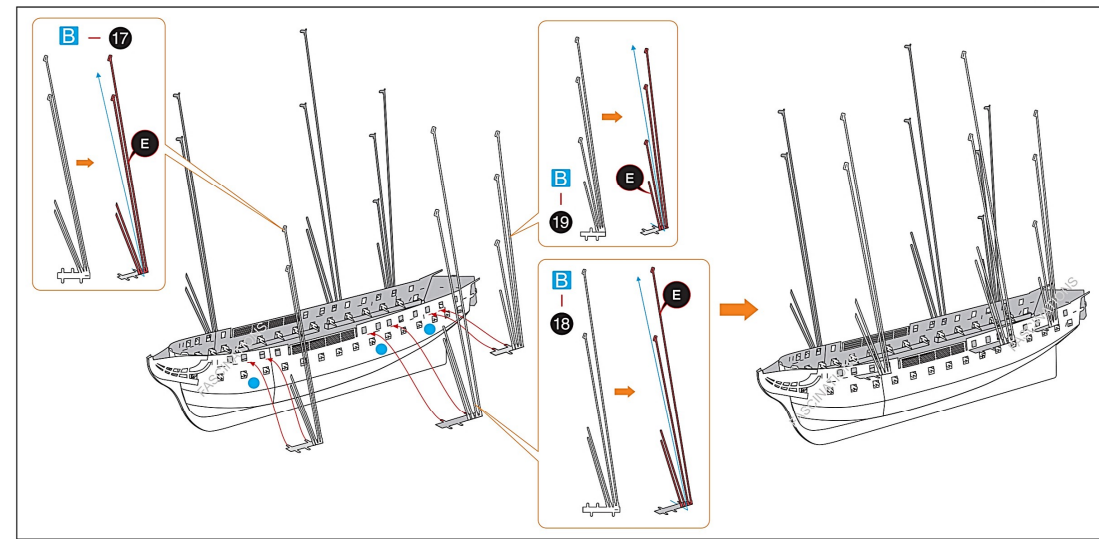
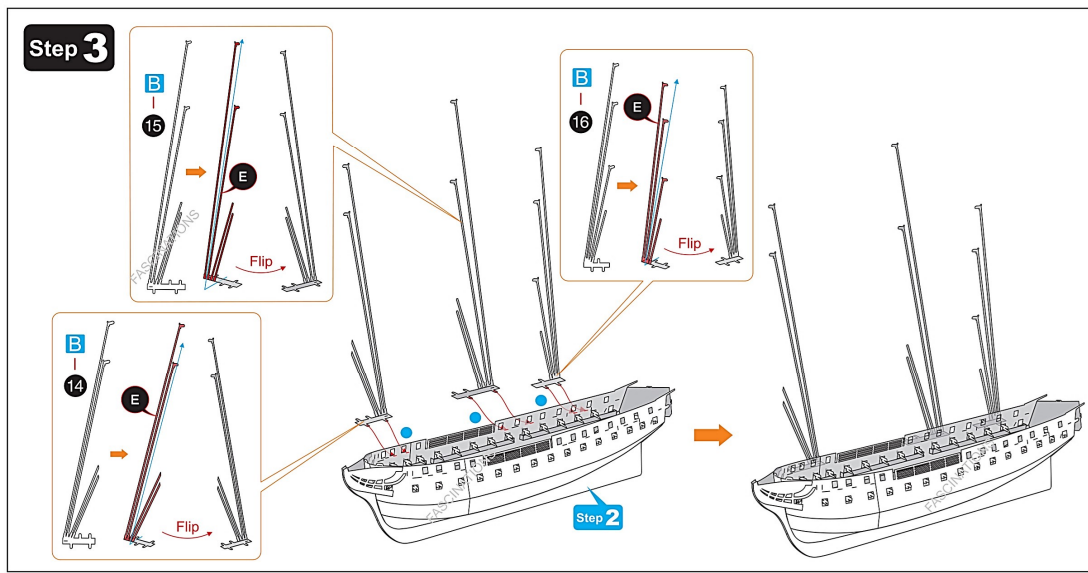
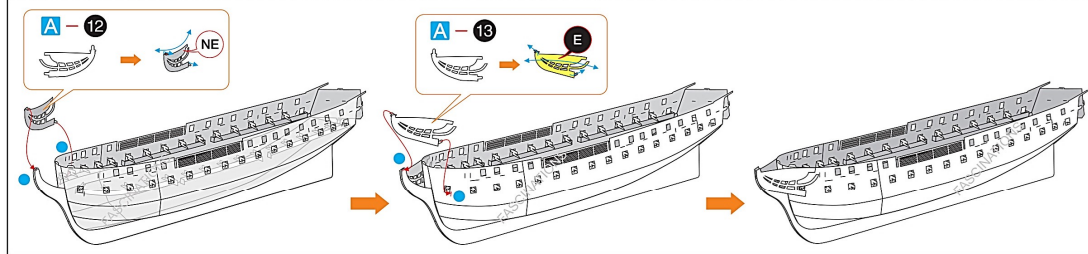
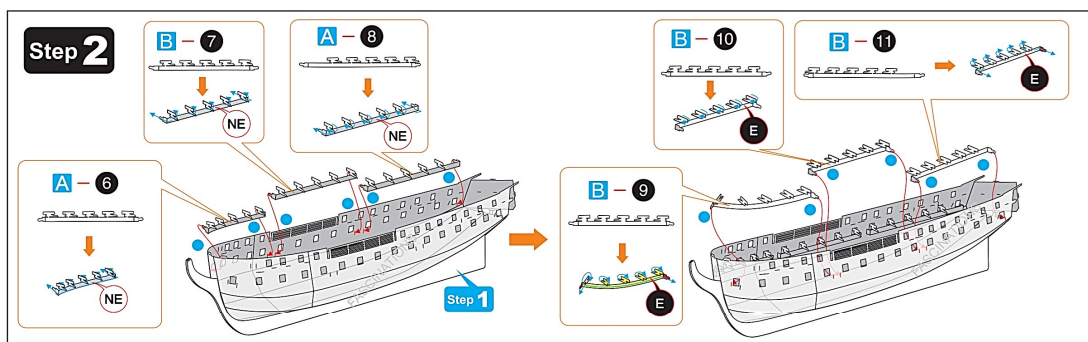
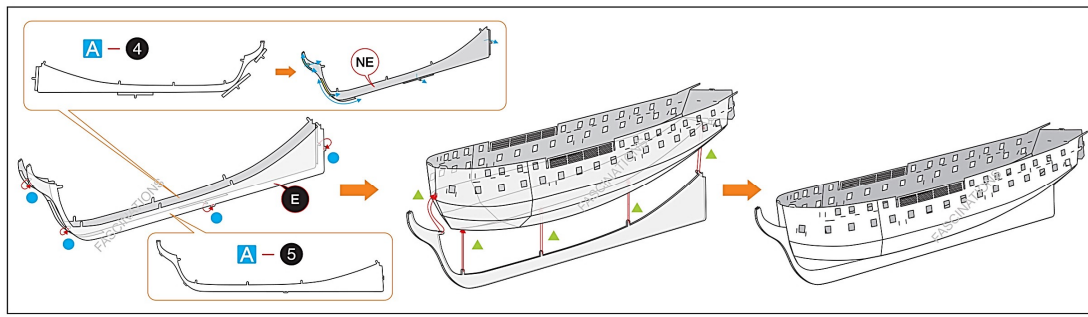


In order to avoid possible injury from sharp edges, please carefully discard the metal sheets after parts have been removed.

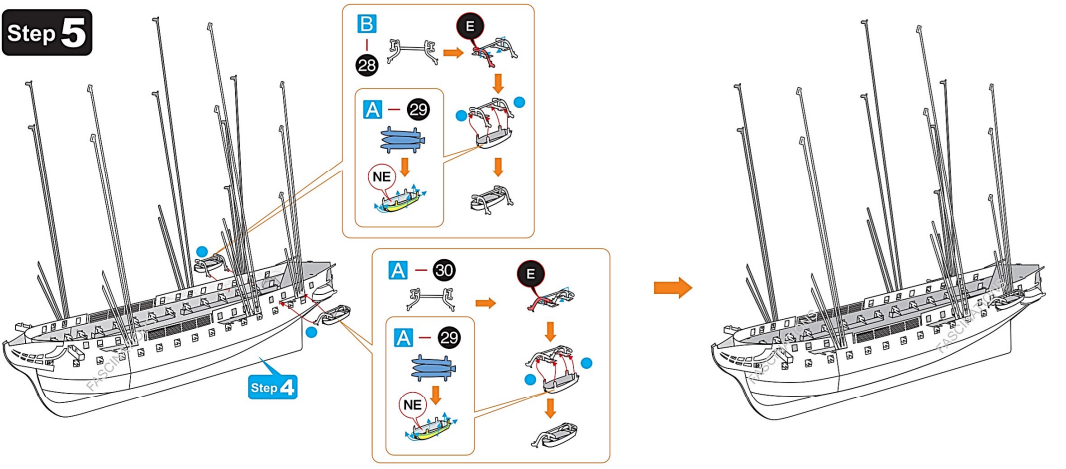
ASSEMBLY STEPS

Step 1

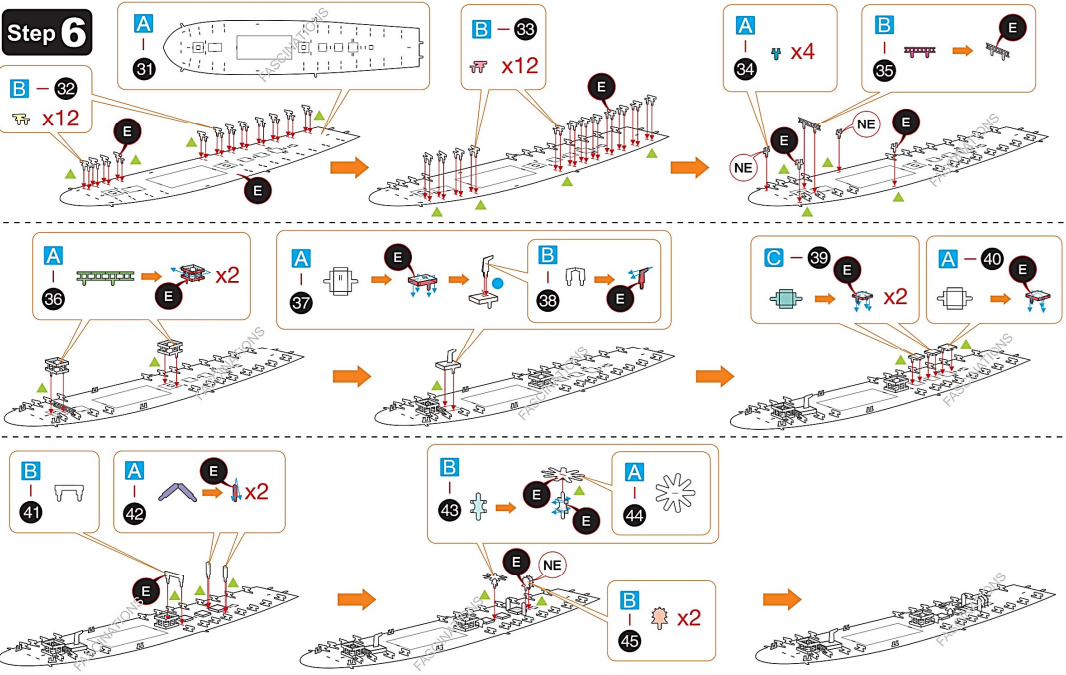




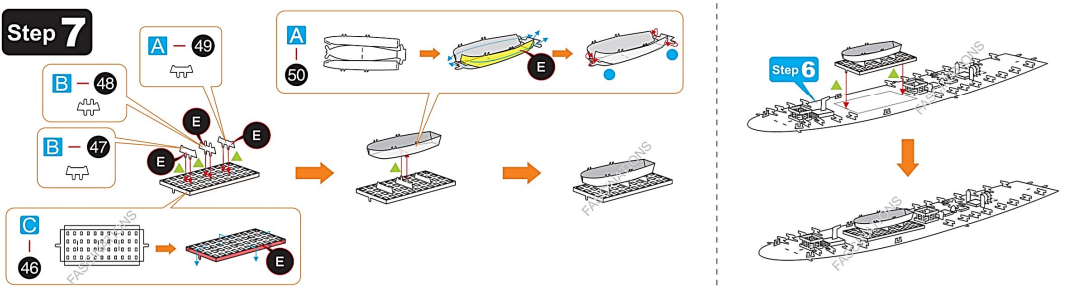
Step 5



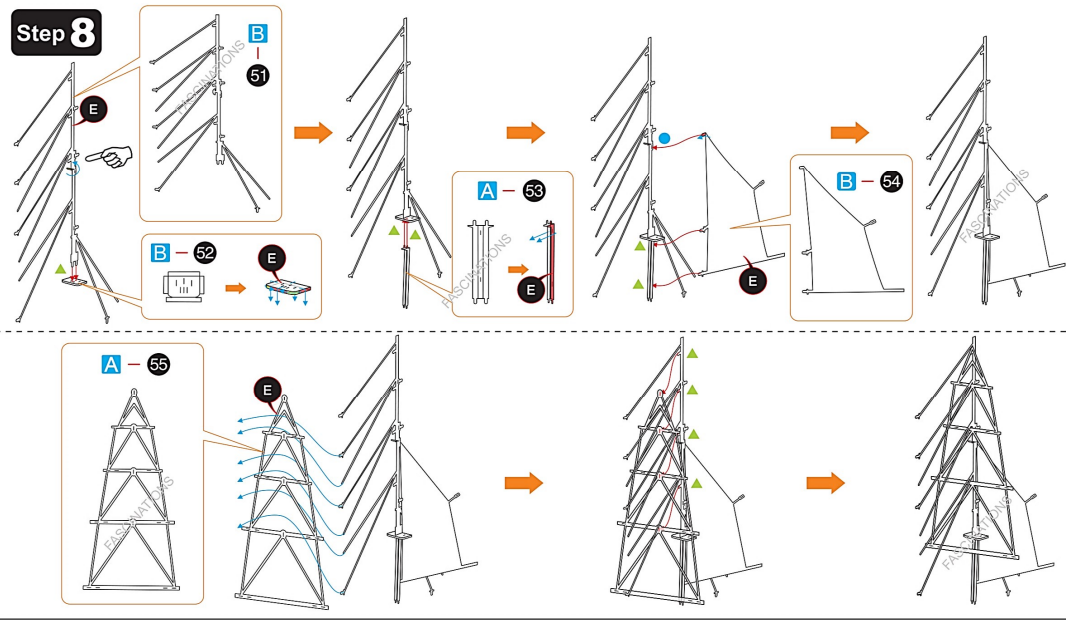
Step 6



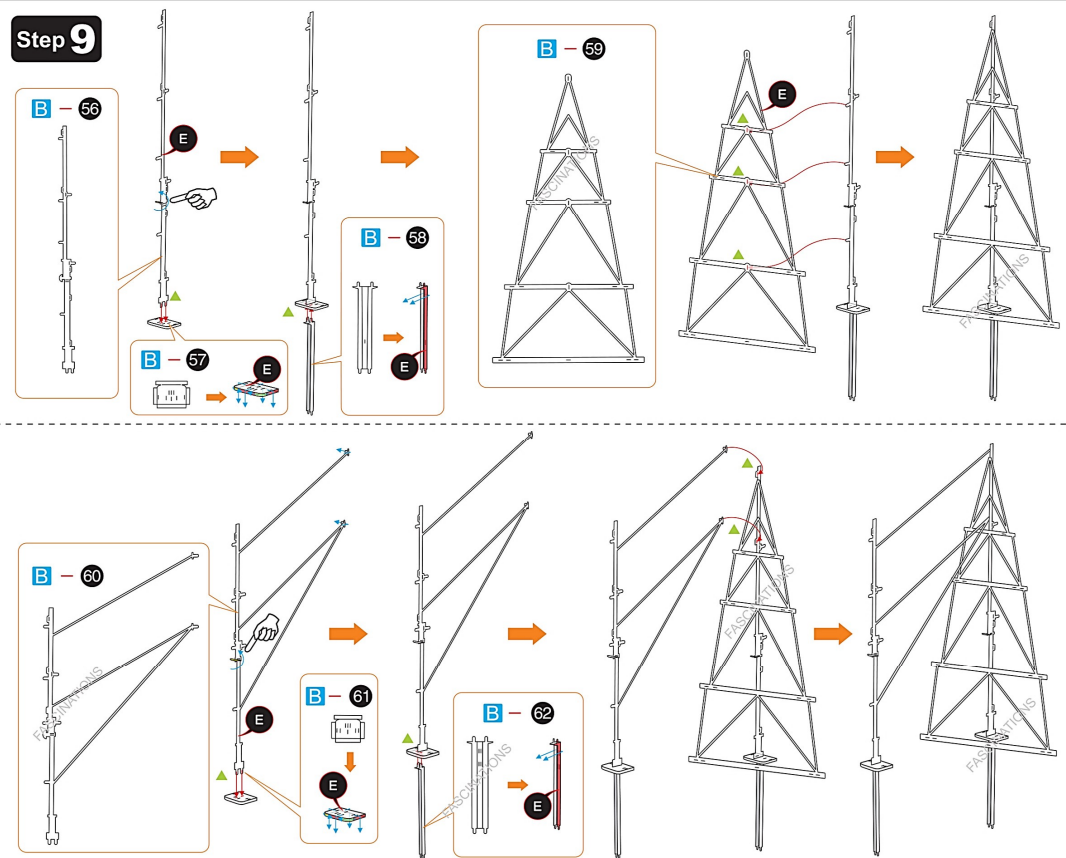
Step 7

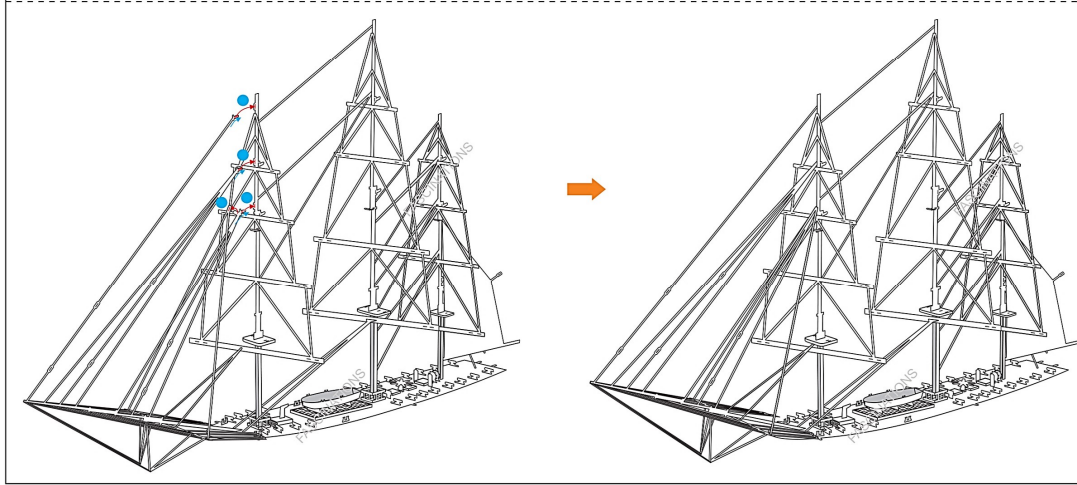
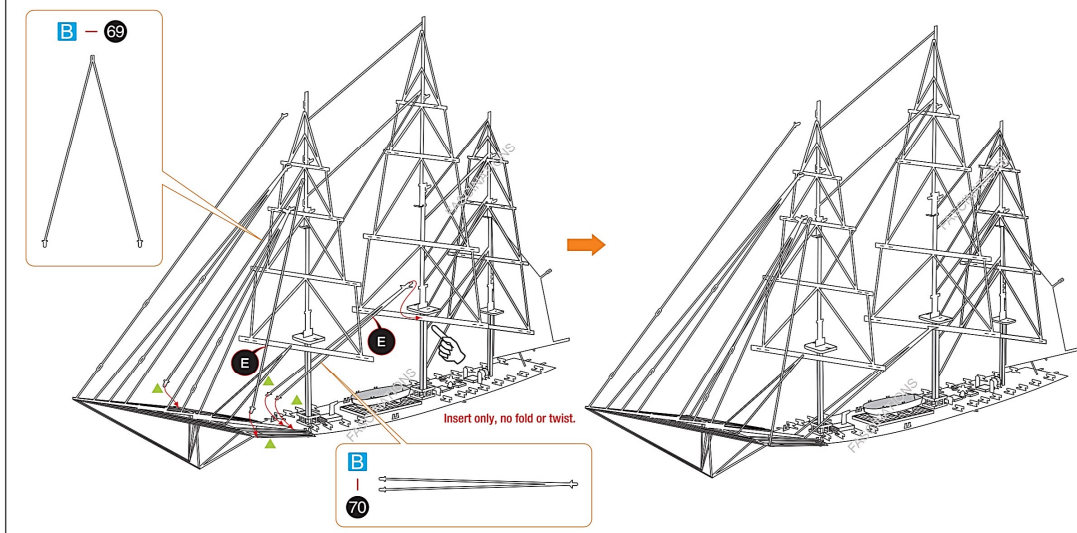
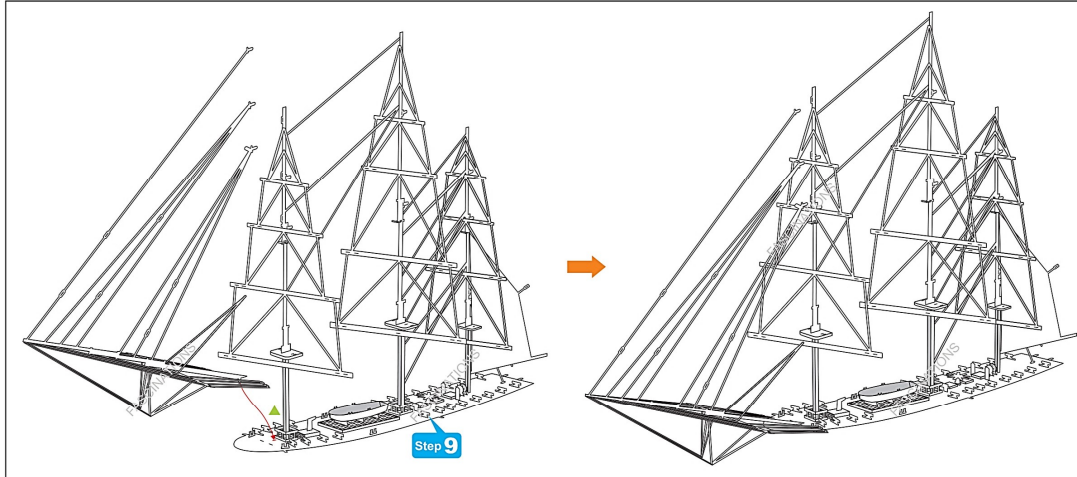
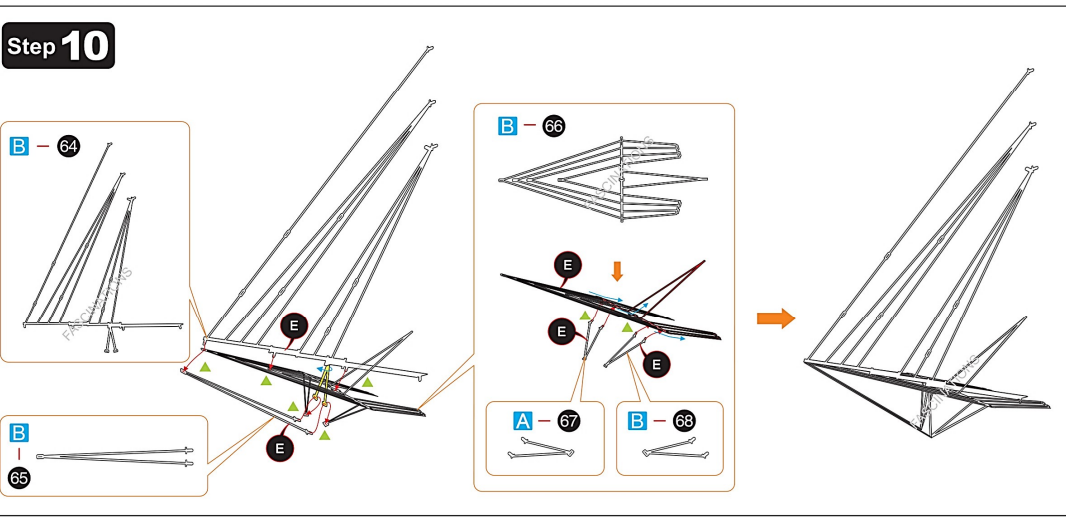
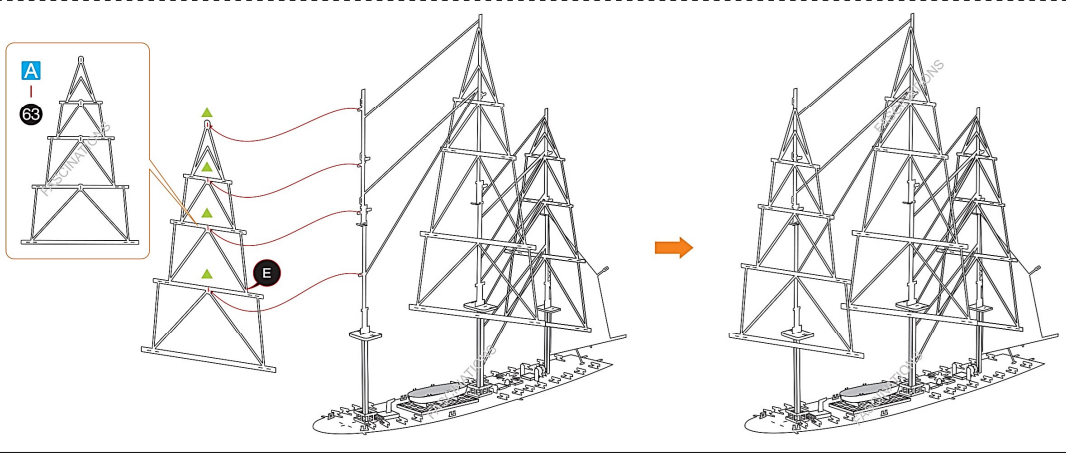
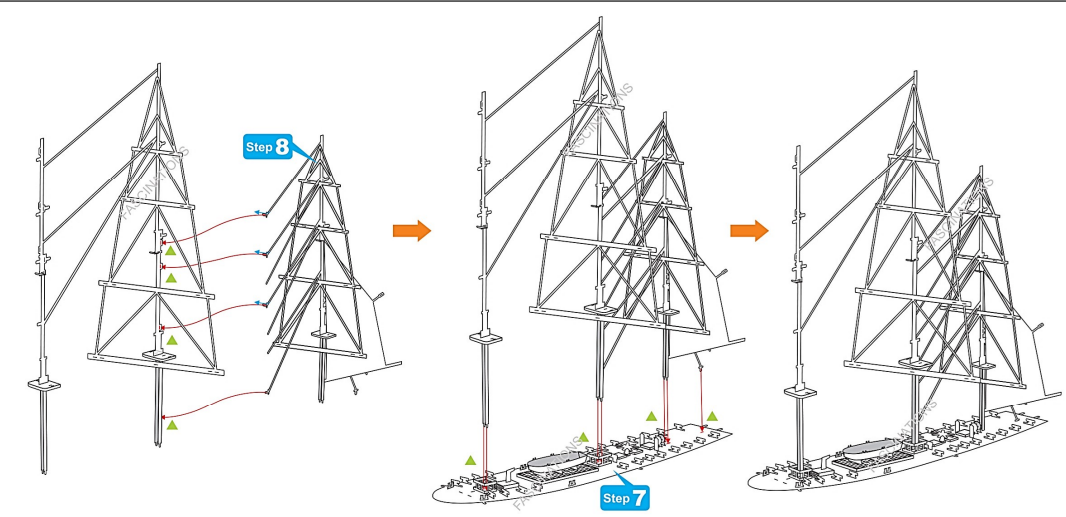


Step 8

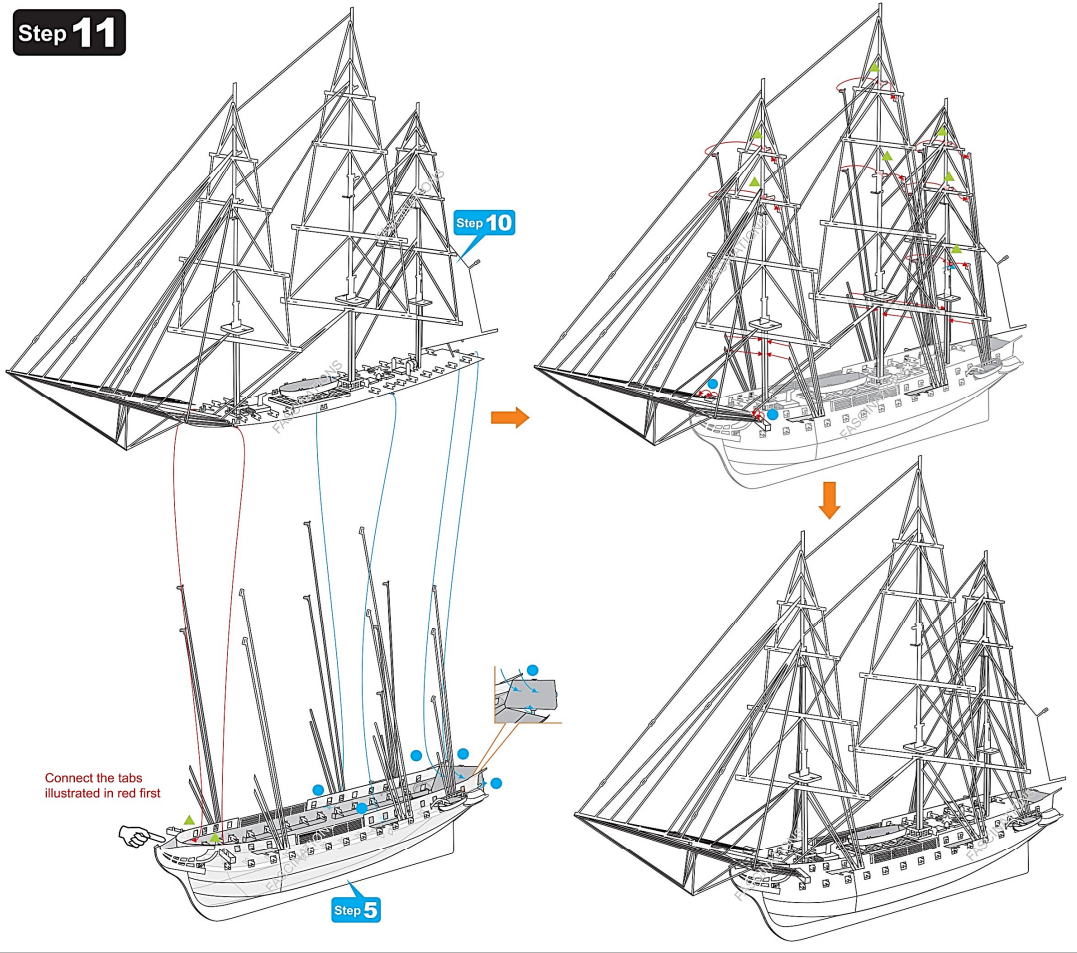


Step 9

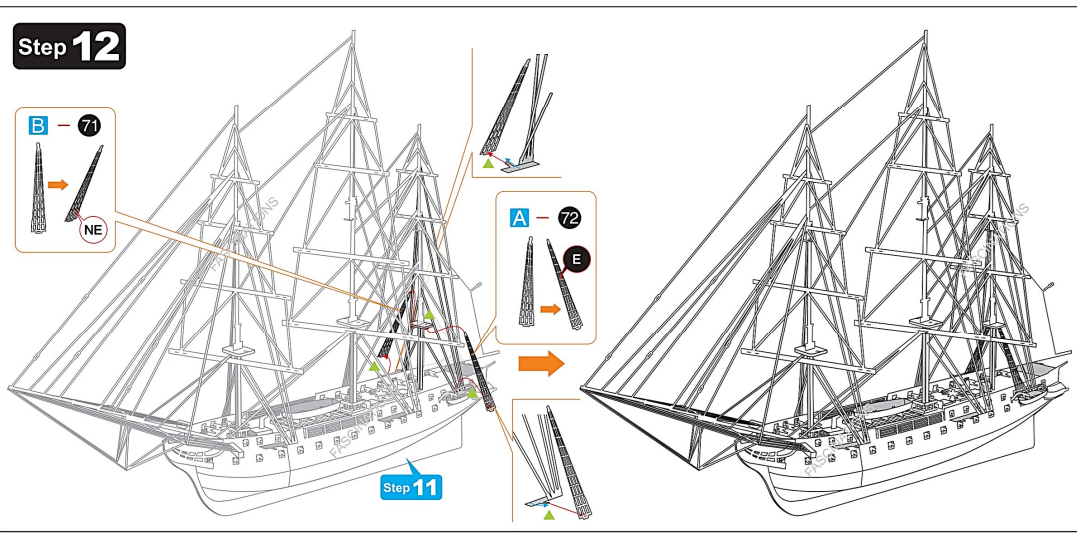




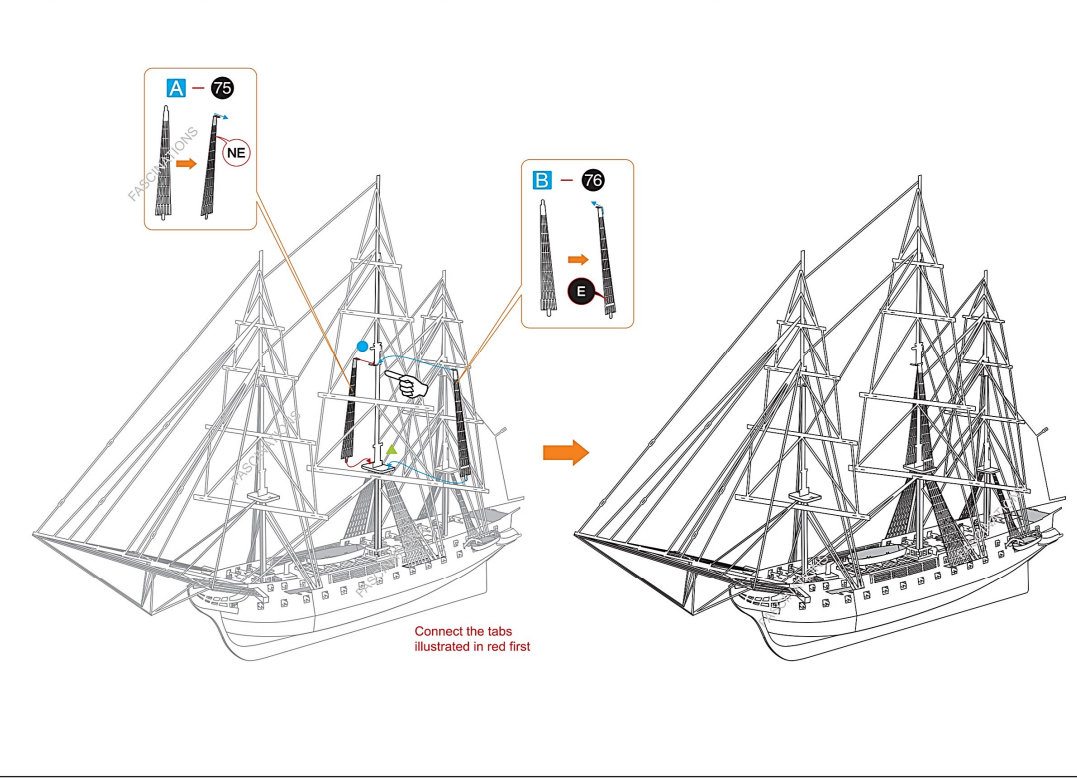
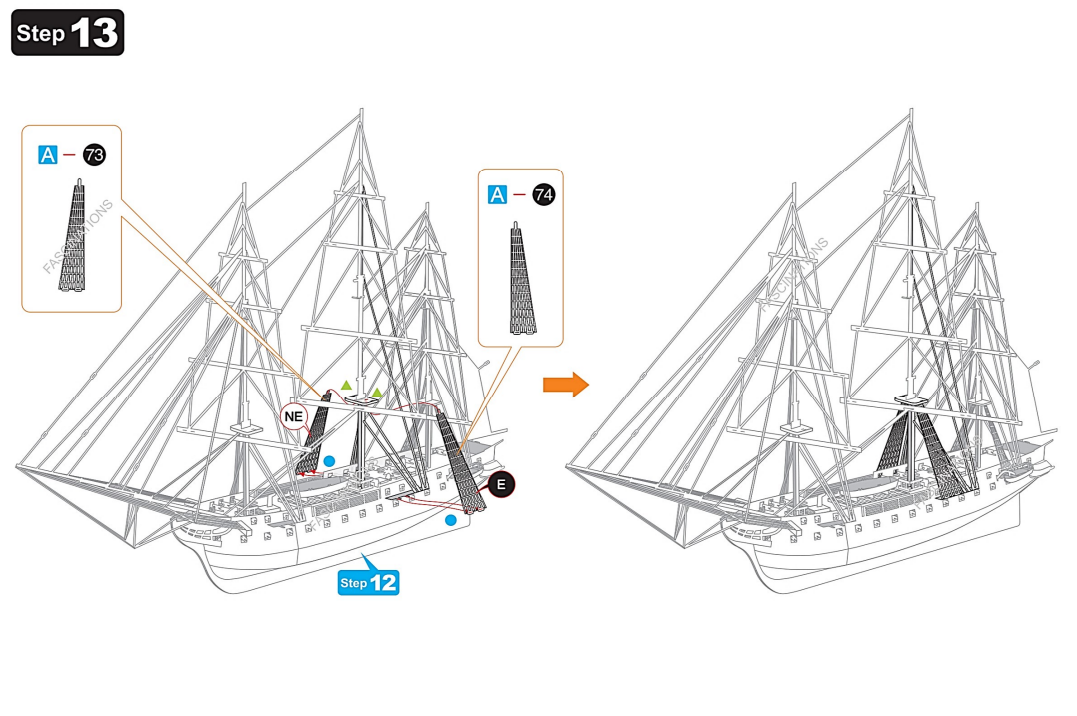
Step 11



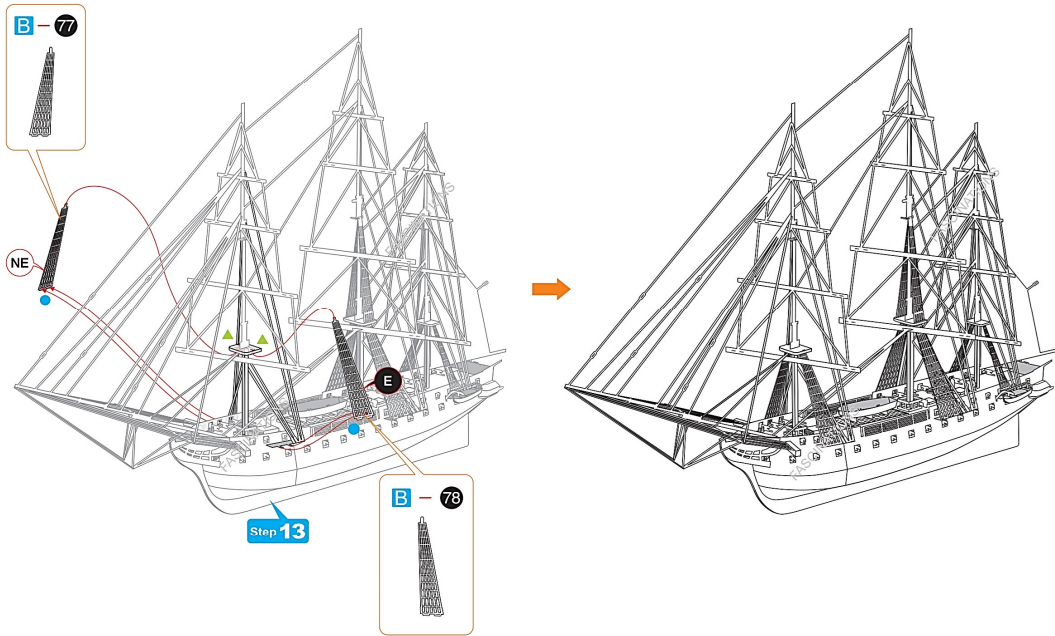
Step 12



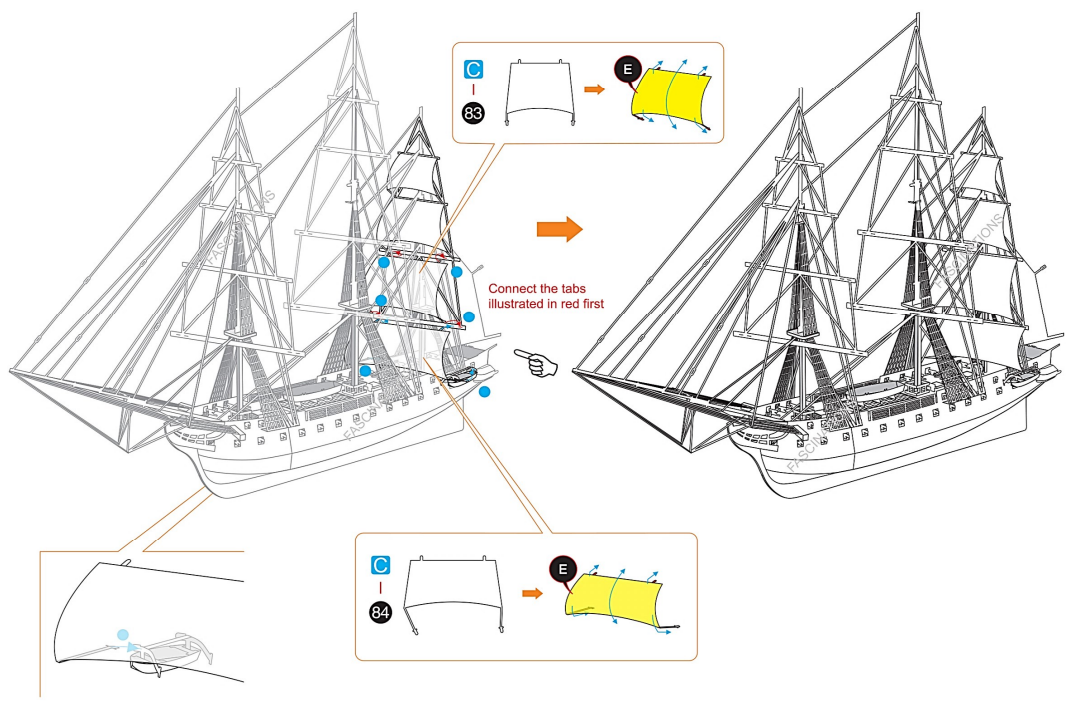
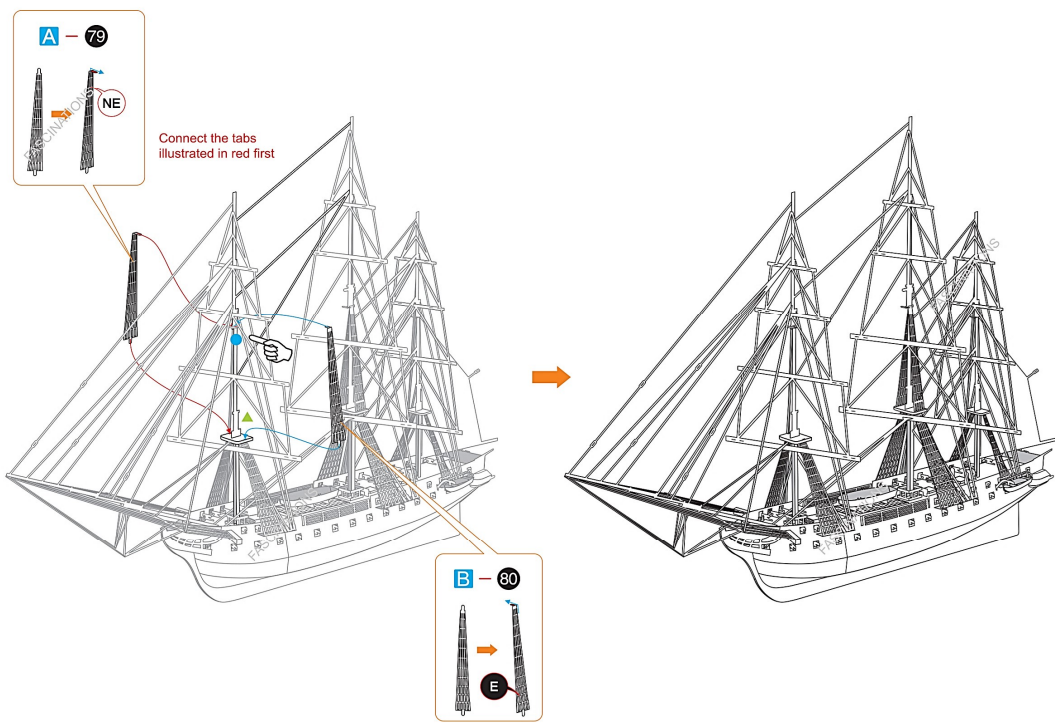
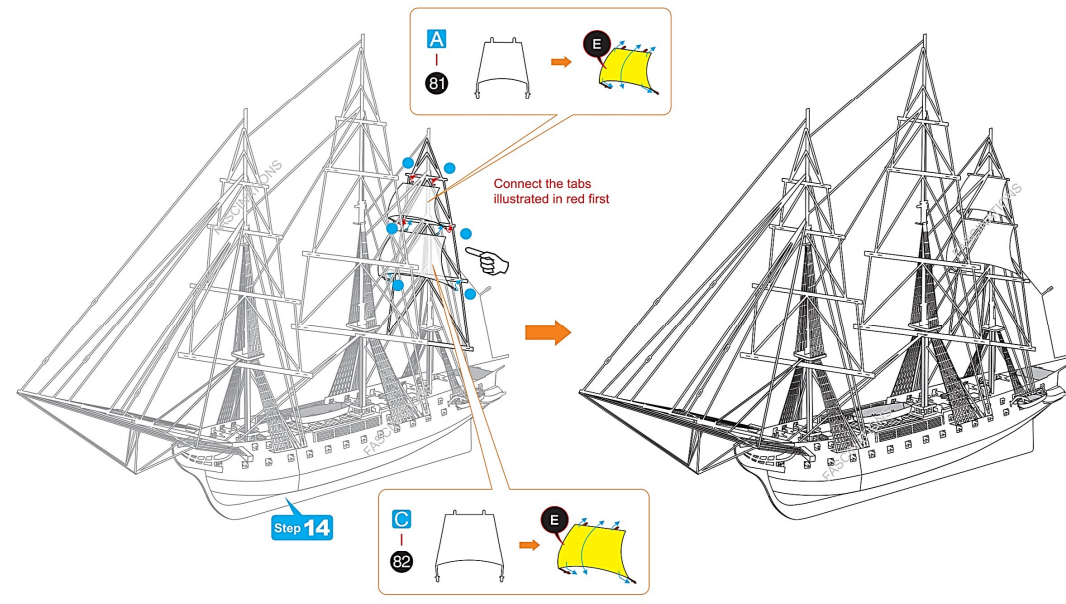
Step 13



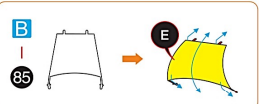
Step 14



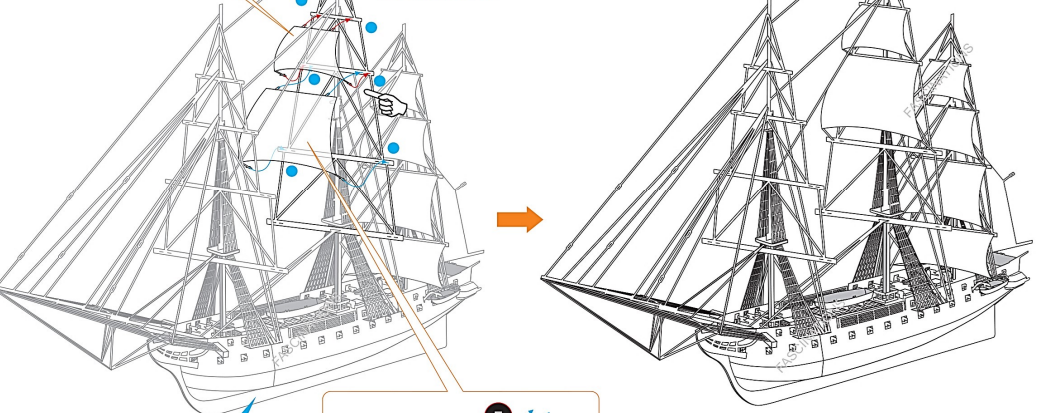
Step 15



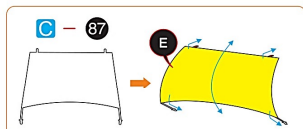
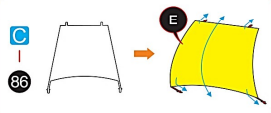
Step 16



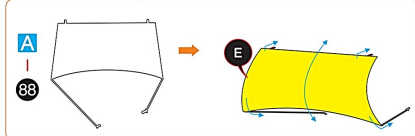
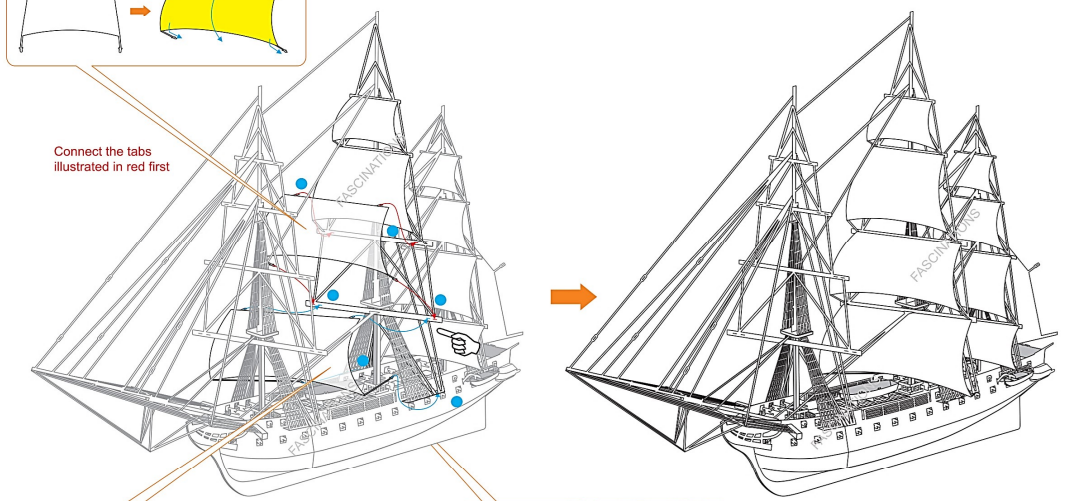
Connect the tabs illustrated in red first



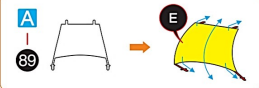
Step 15



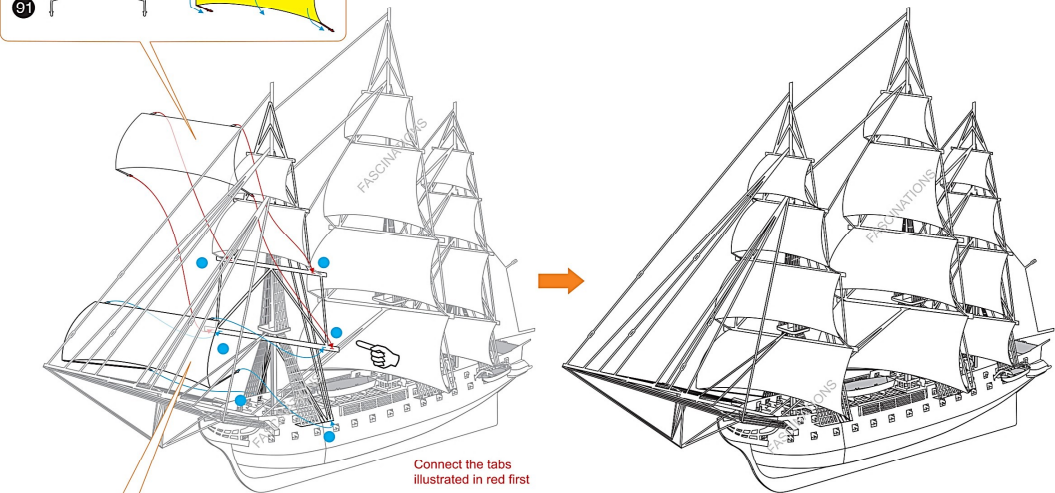
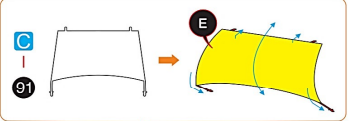
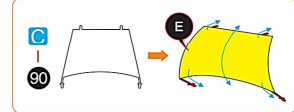
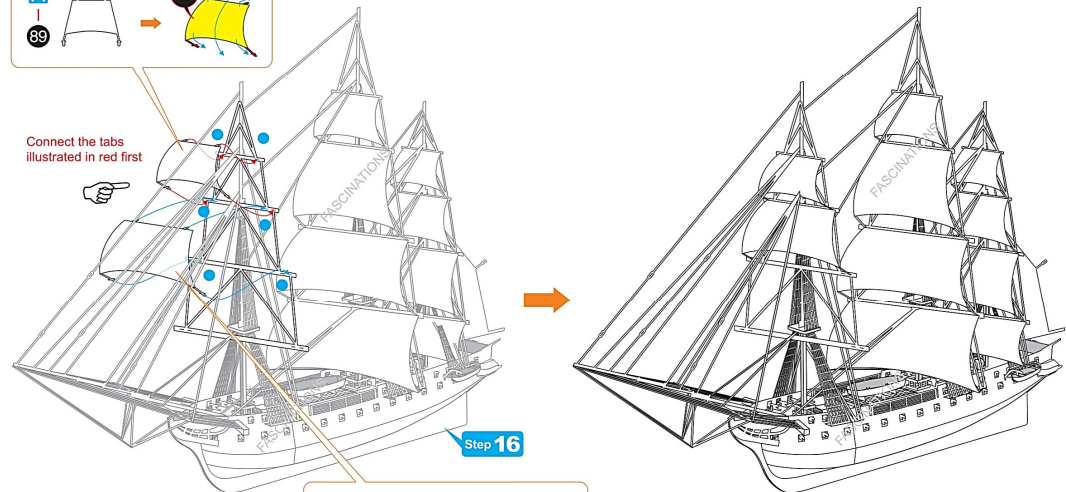
Connect the tabs illustrated in red first



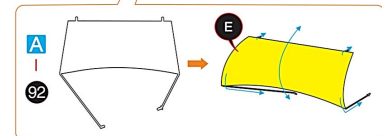
Step 17



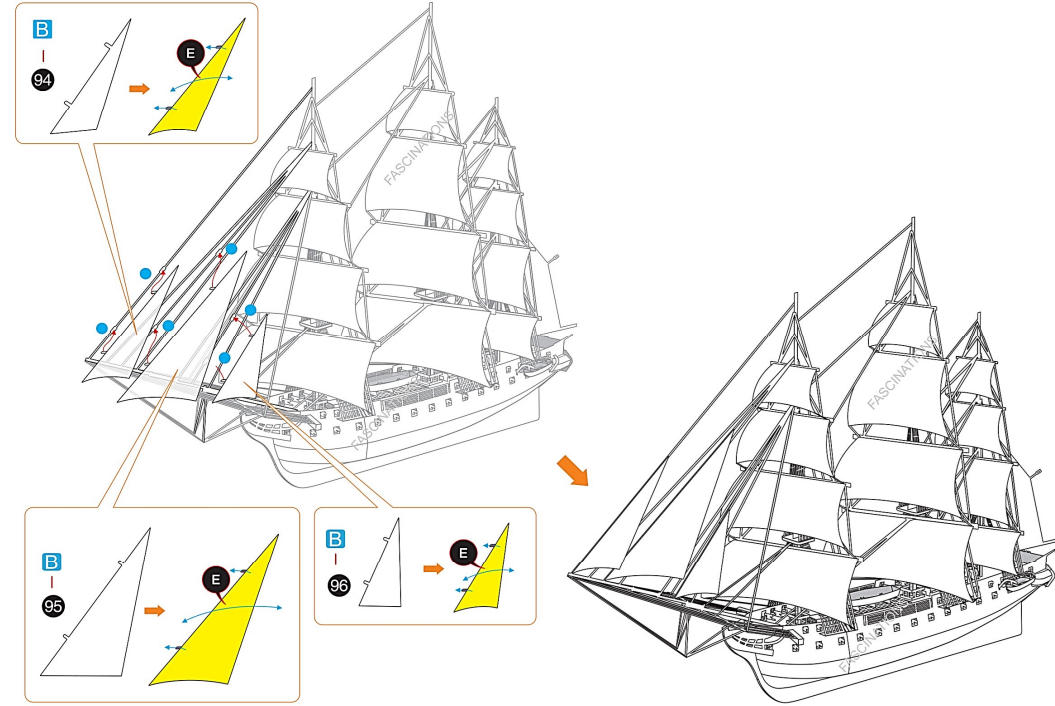
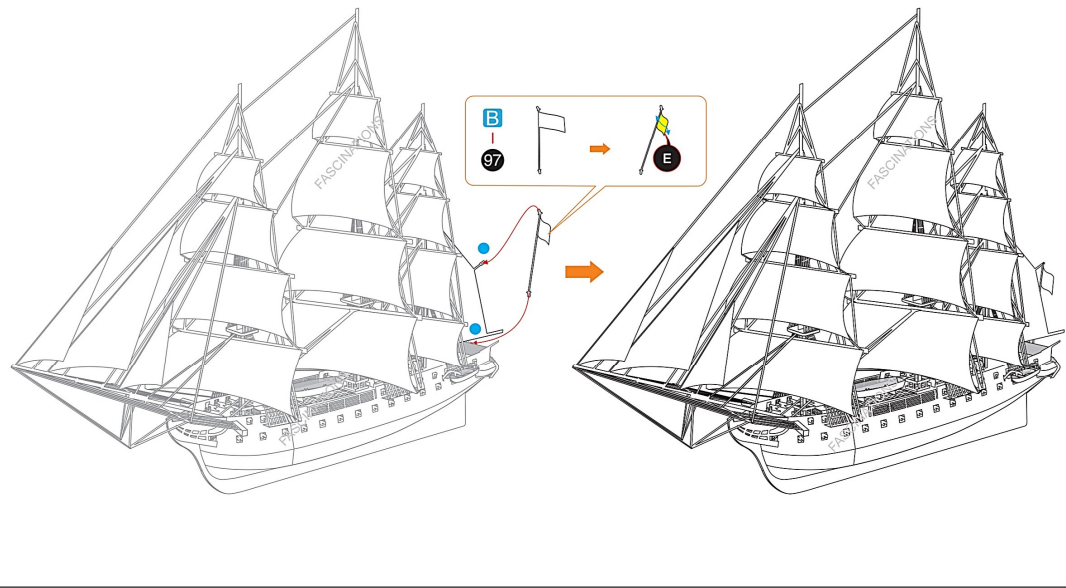
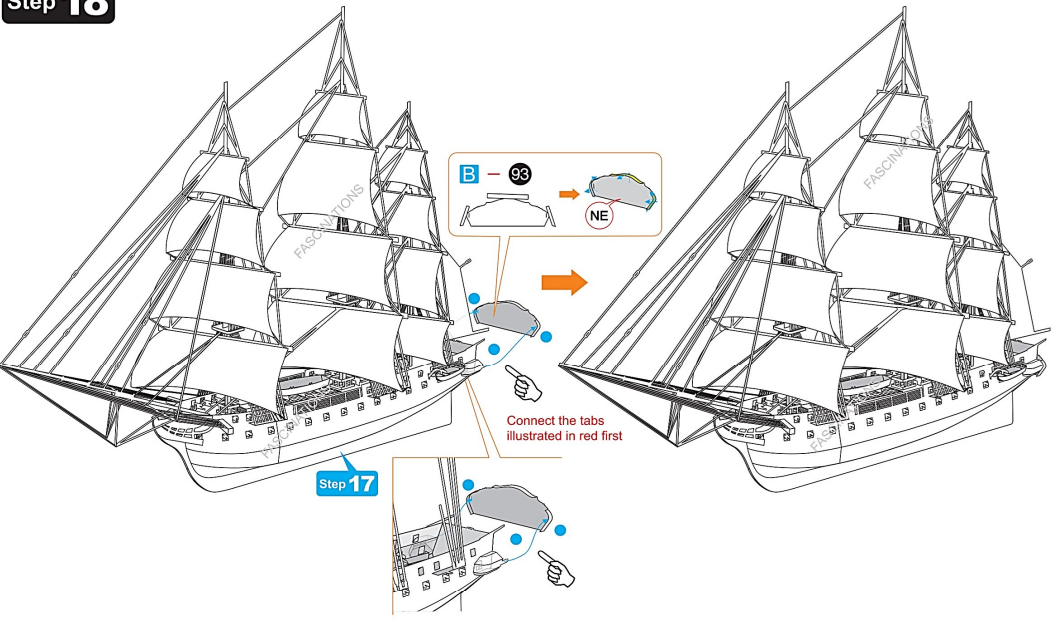
Connect the tabs illustrated in red first



Connect the tabs illustrated in red first



Step 18



Step 19

