

FORD TRIMOTOR
MMS467



Ford Motor Company Trademarks
and Trade Dress used under
license to Fascinations, Inc.

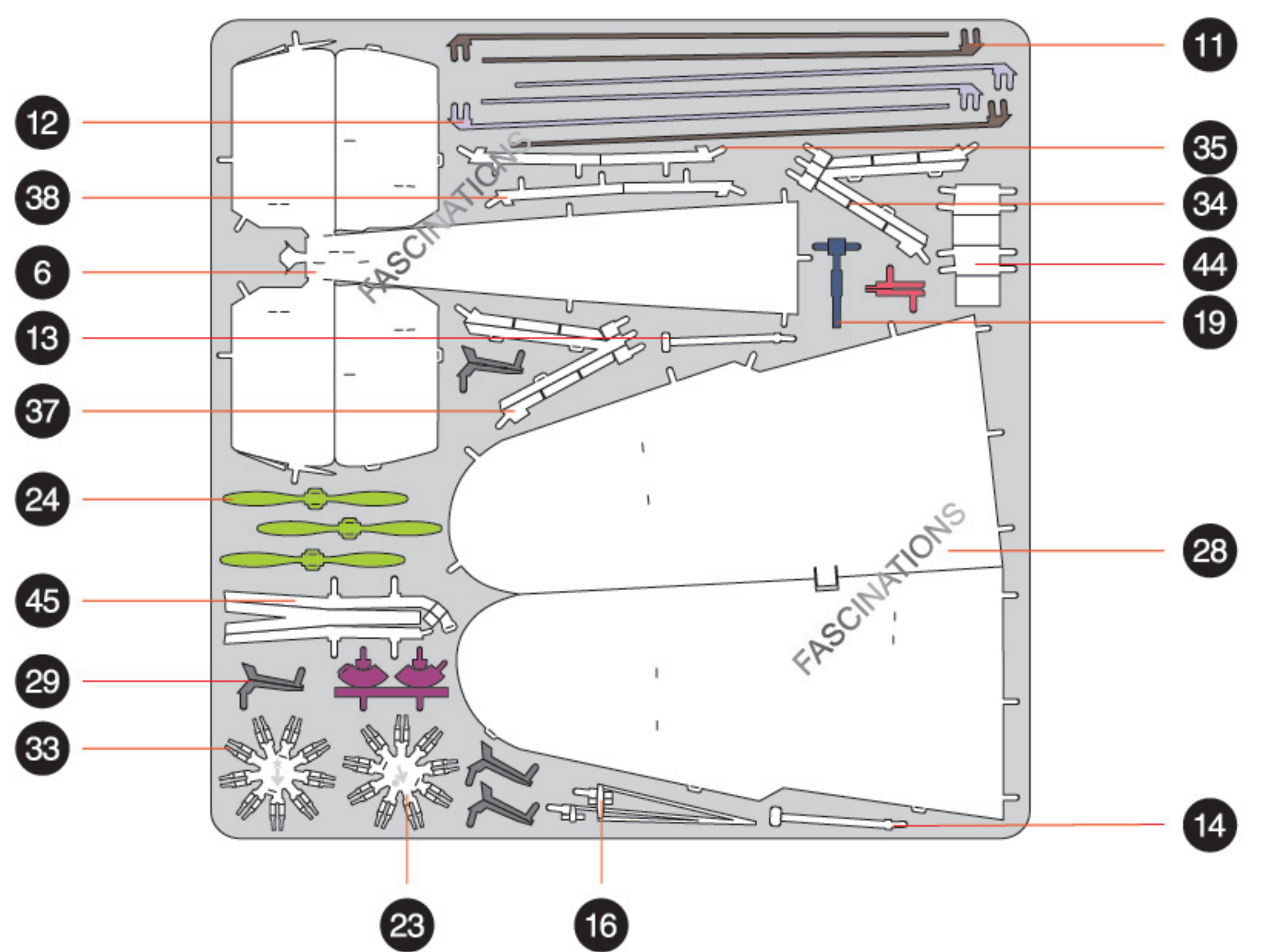


It is highly recommended that you visit
www.metalearth.com/360/MMS467
to see the completed model before assembling your own

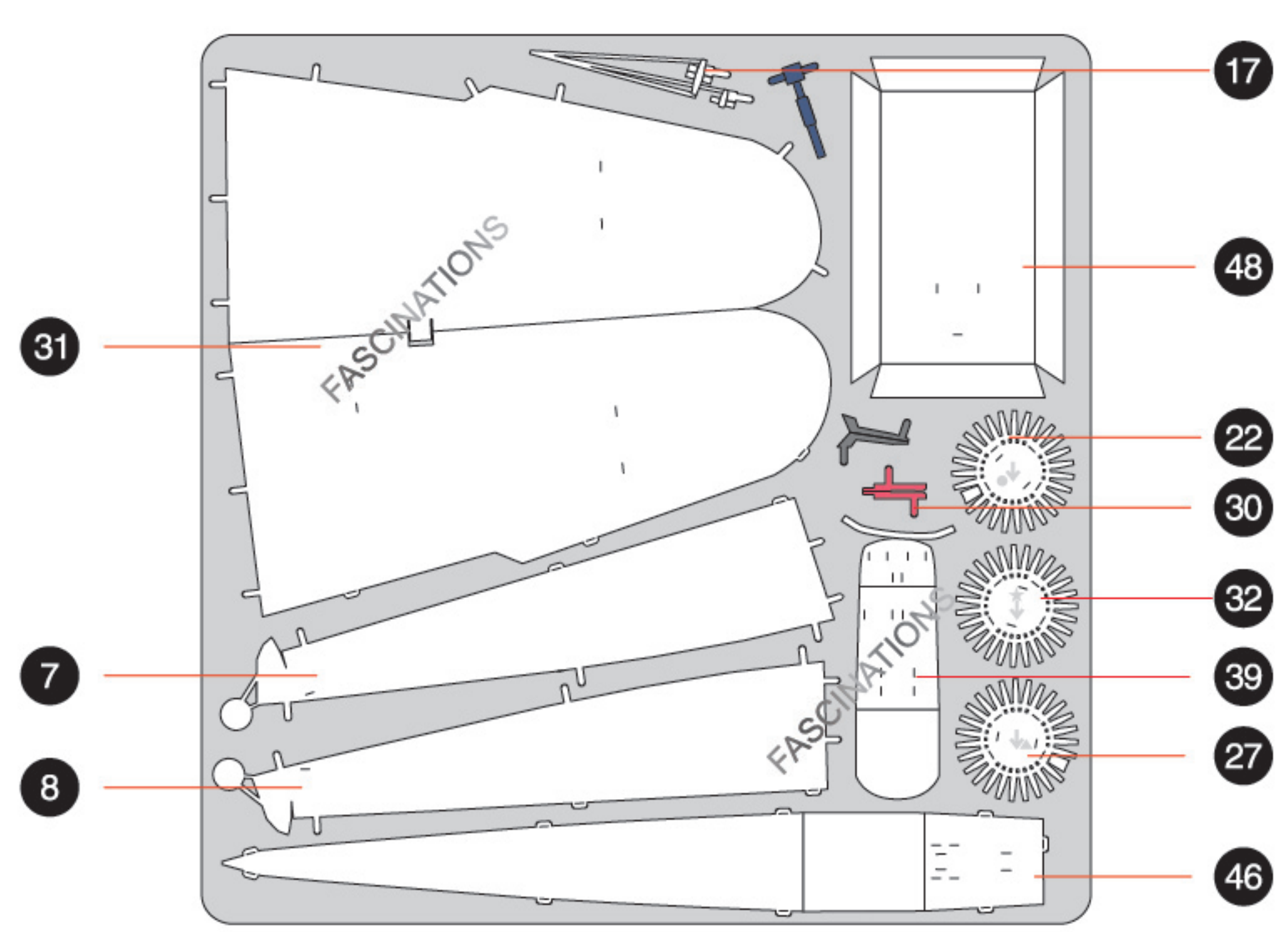
METAL SHEETS

Parts with same color are duplicates

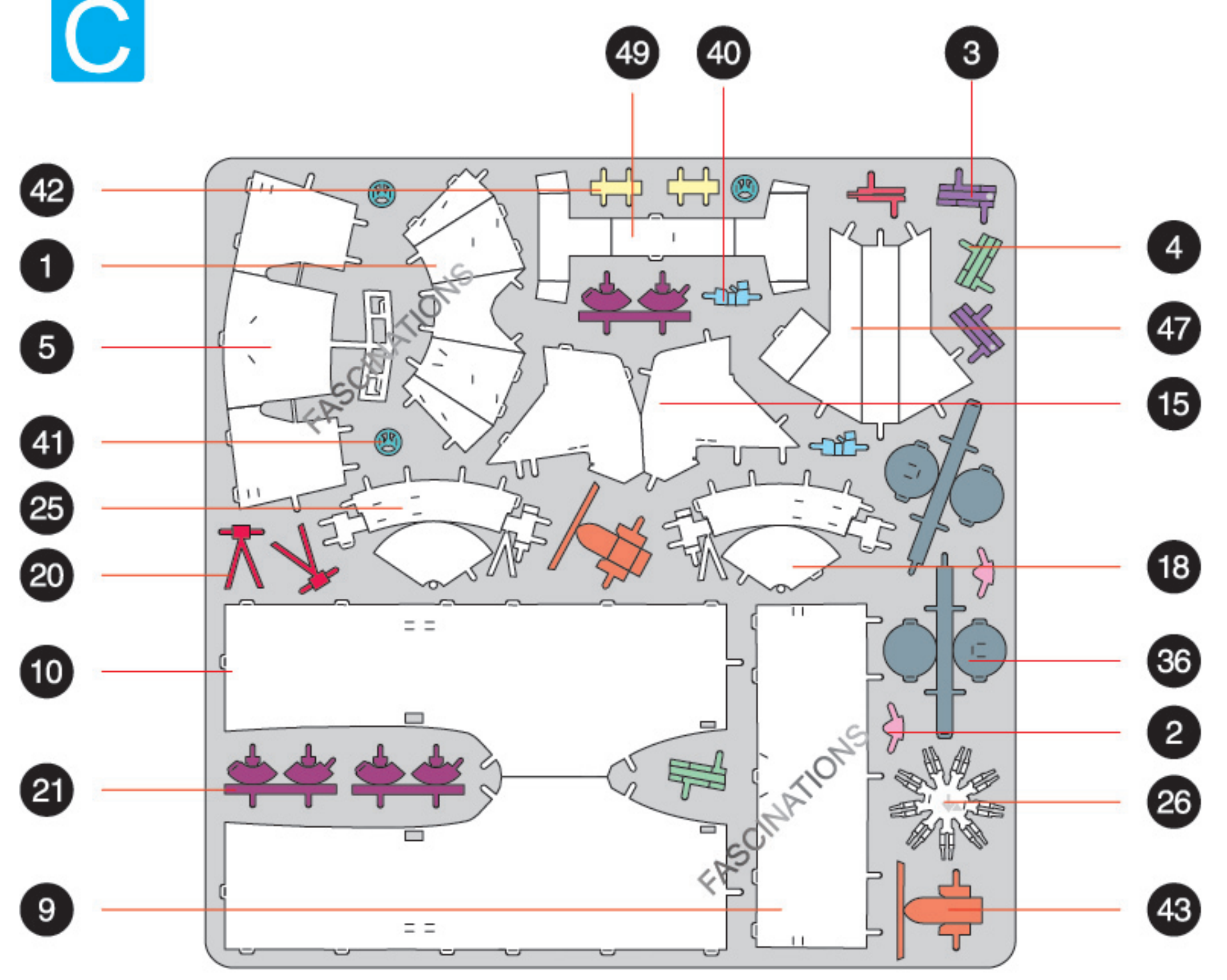
A



B



C

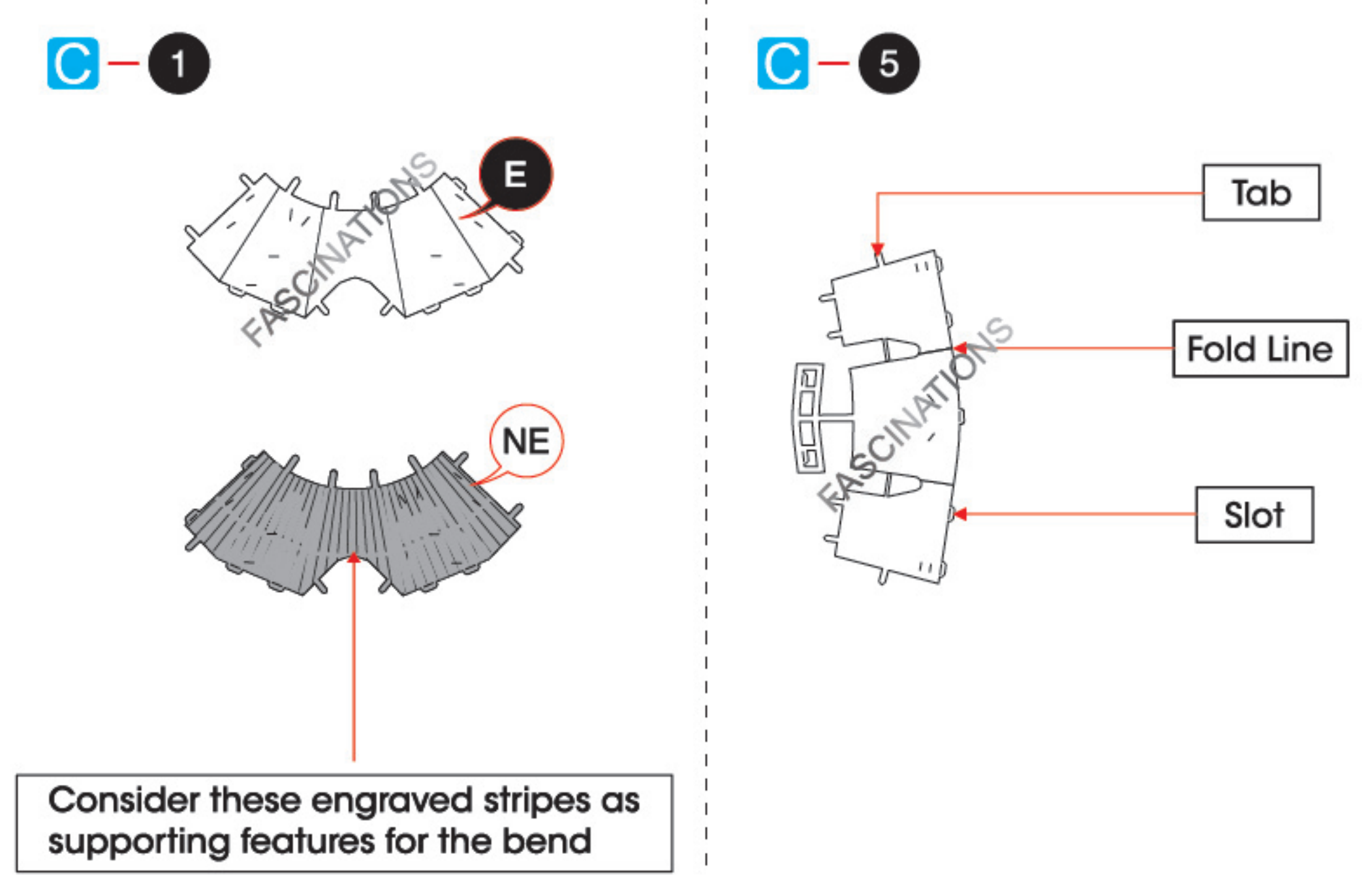


In order to avoid possible injury from sharp edges, please carefully
discard the metal sheets after parts have been removed.



Go to www.metalearth.com/360/MMS467 to see the zoomable PDF version of this instruction sheet

TO CREATE THE BEST CONNECTIONS



Legends:

- E** Engraved/ Color side
- NE** Non - engraved/ Silver side
- Attention point
- Insert tab and bend 90 degrees
- Insert tab and twist 90 degrees

Recommended tools:

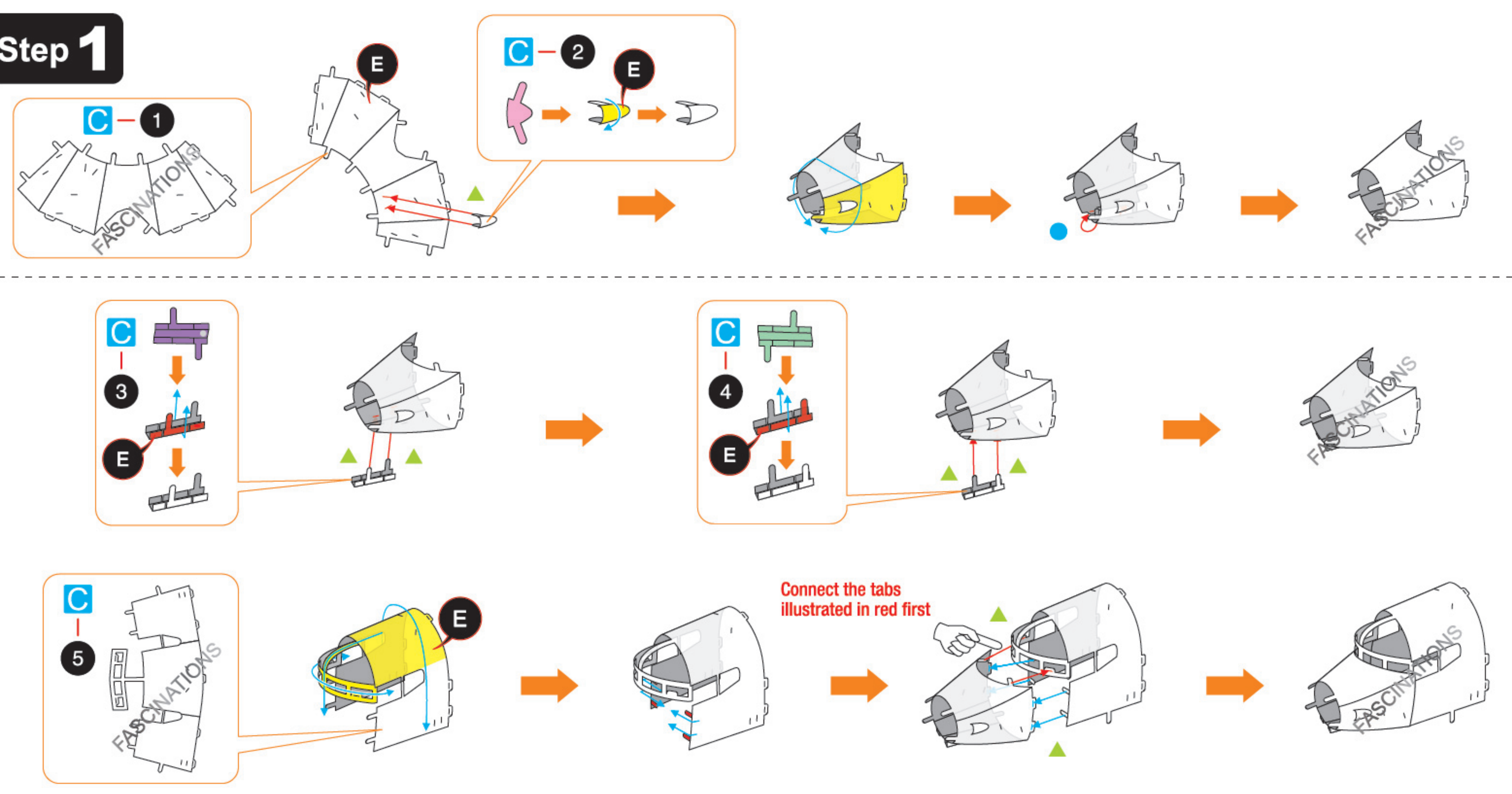
- Wire cutters: helpful for taking parts from the metal sheets.
- Tweezers or needle nose pliers: helpful for folding parts, bending and twisting tabs.

Assembly tip:

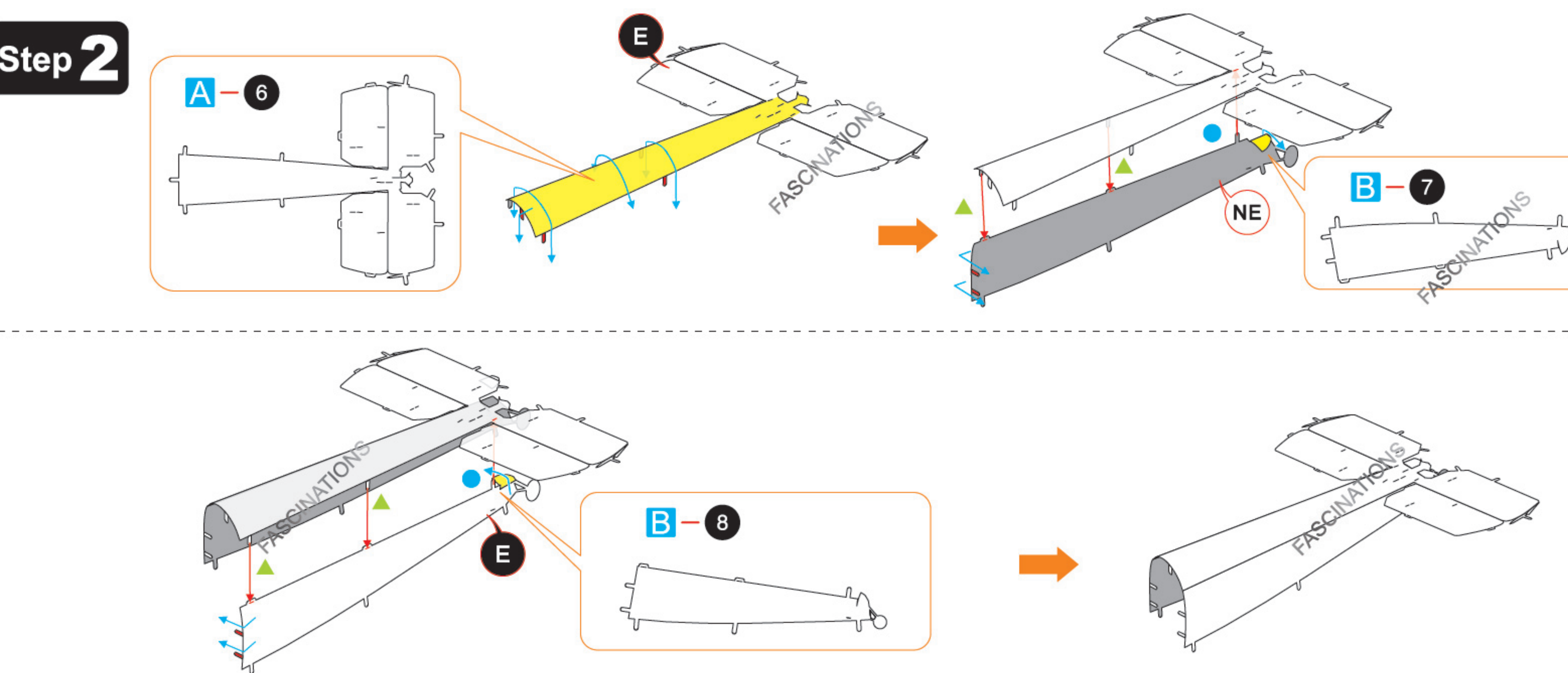
If needed, slightly twist tabs to hold parts together then untwist and bend them down for a nice finish.
 Yellow areas should be curled
 Red areas should be folded

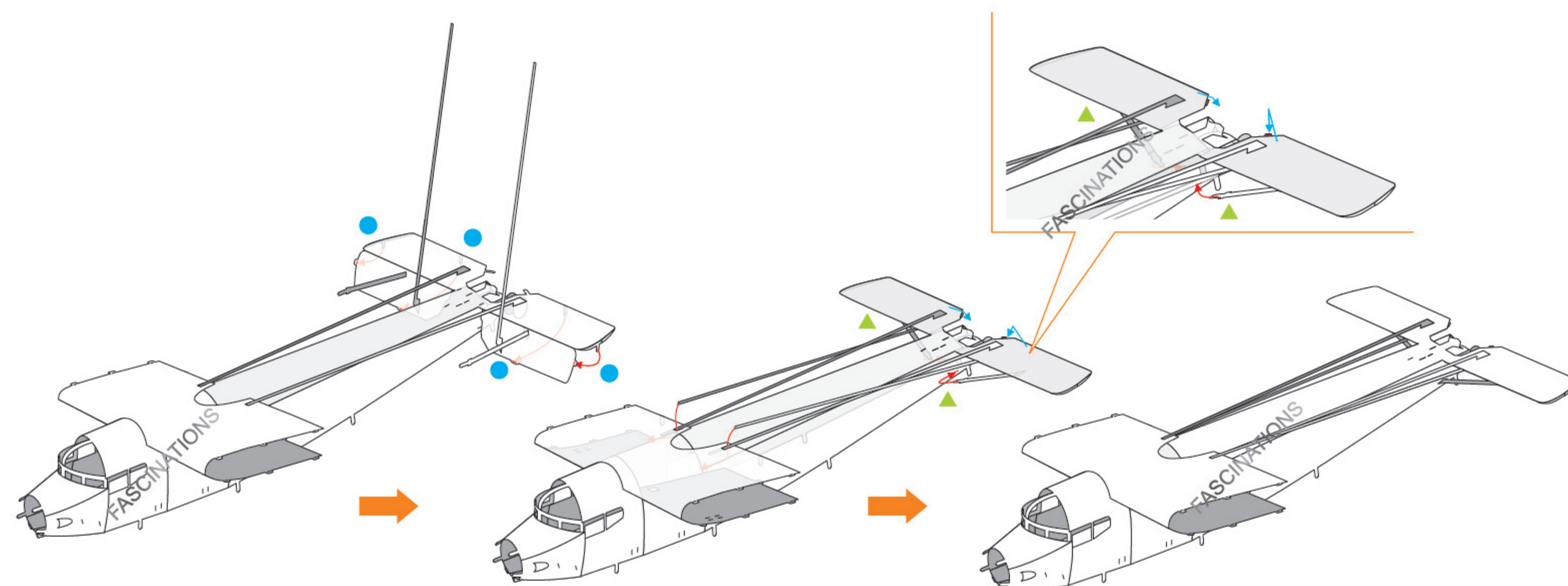
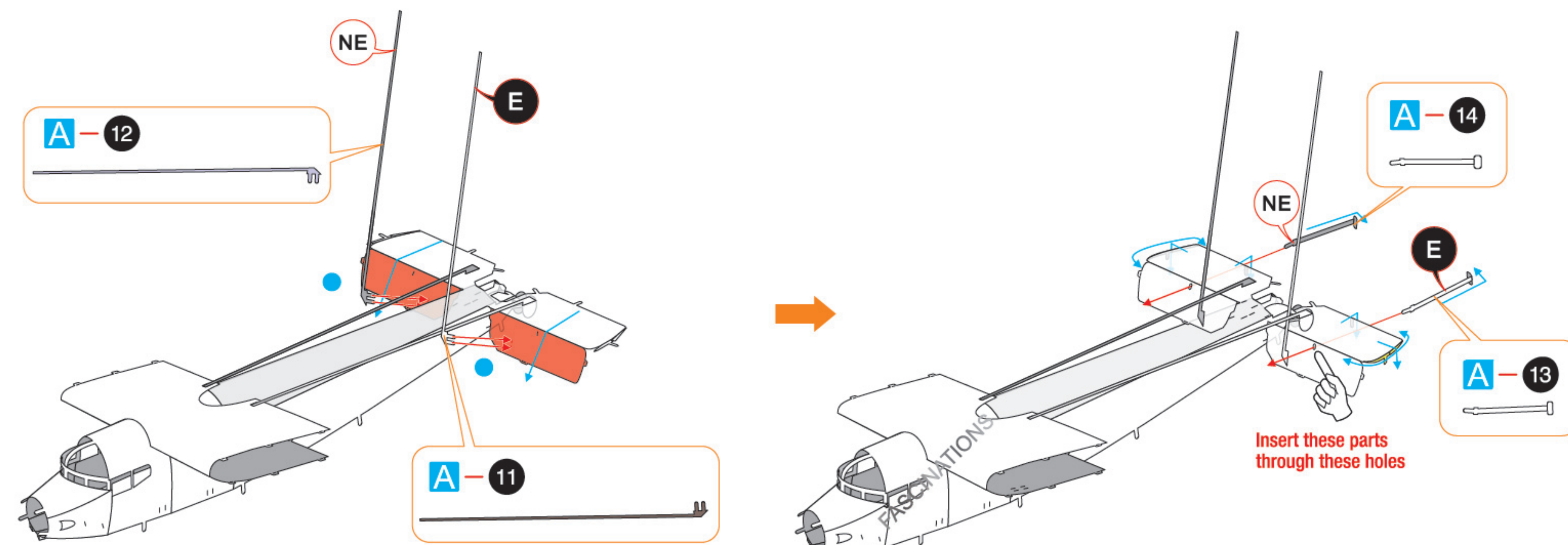
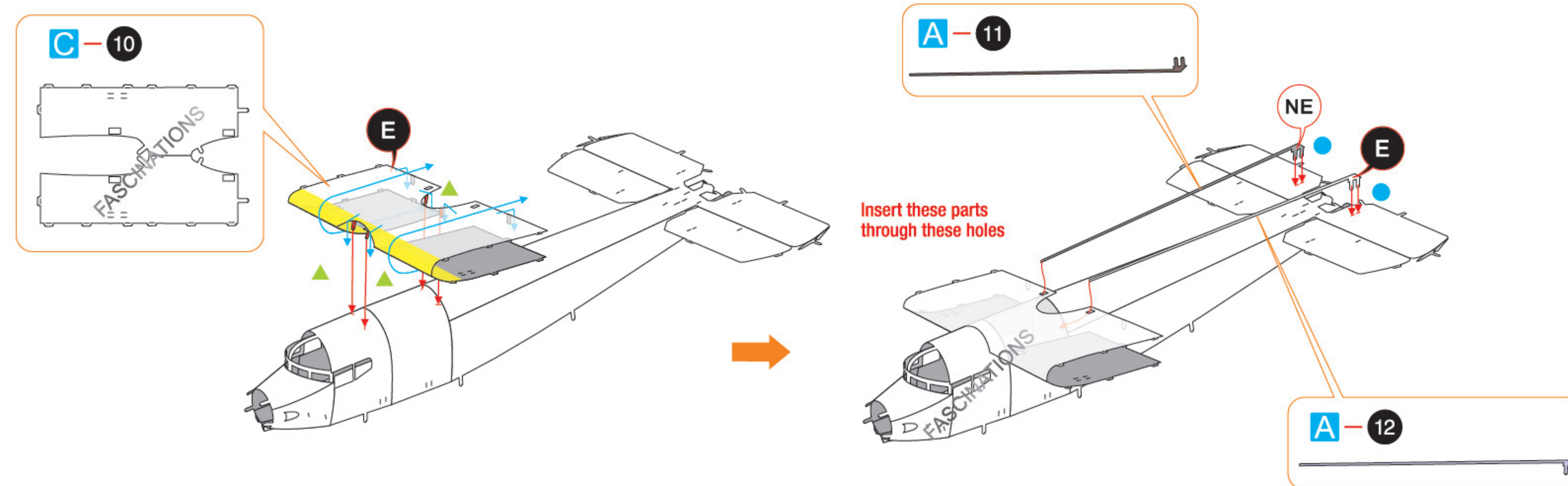
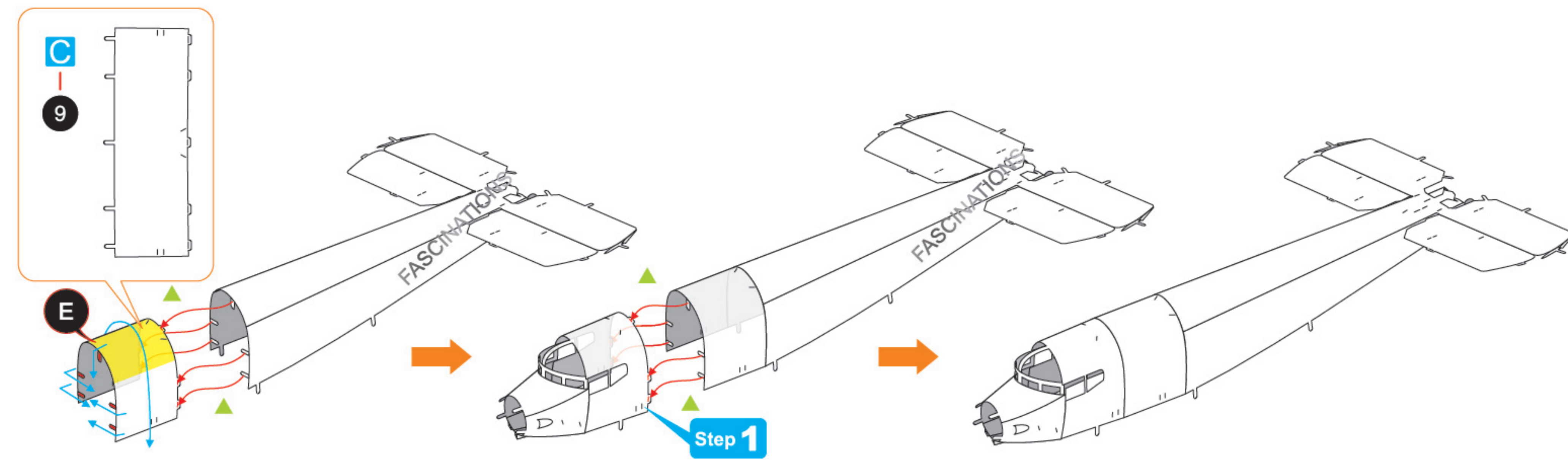
ASSEMBLY FLOW CHART

Step 1

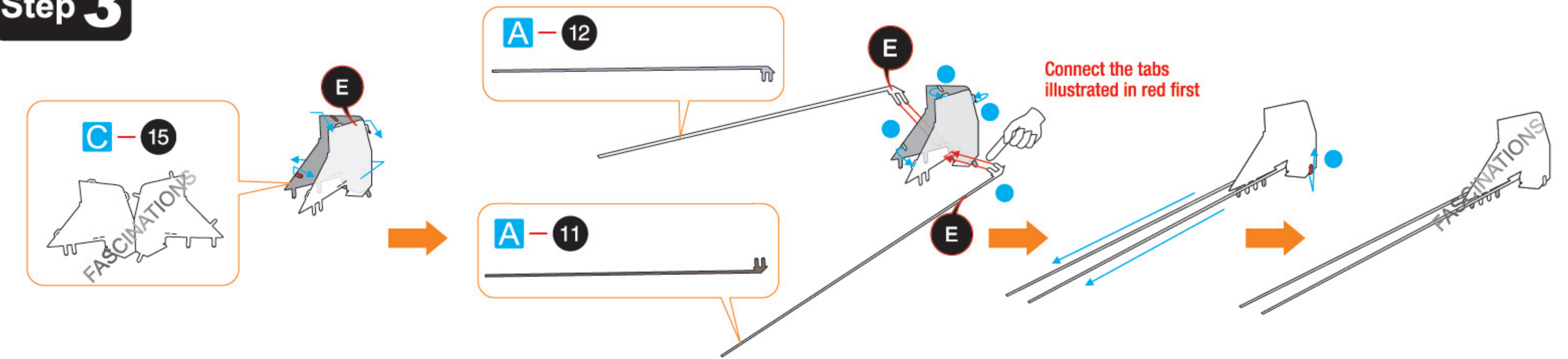


Step 2

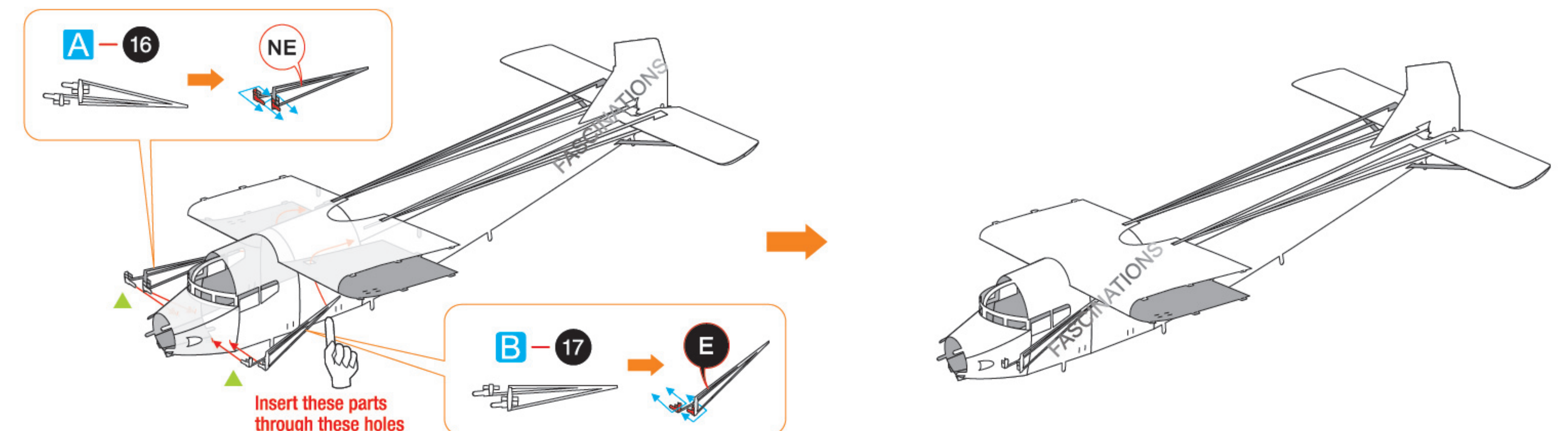
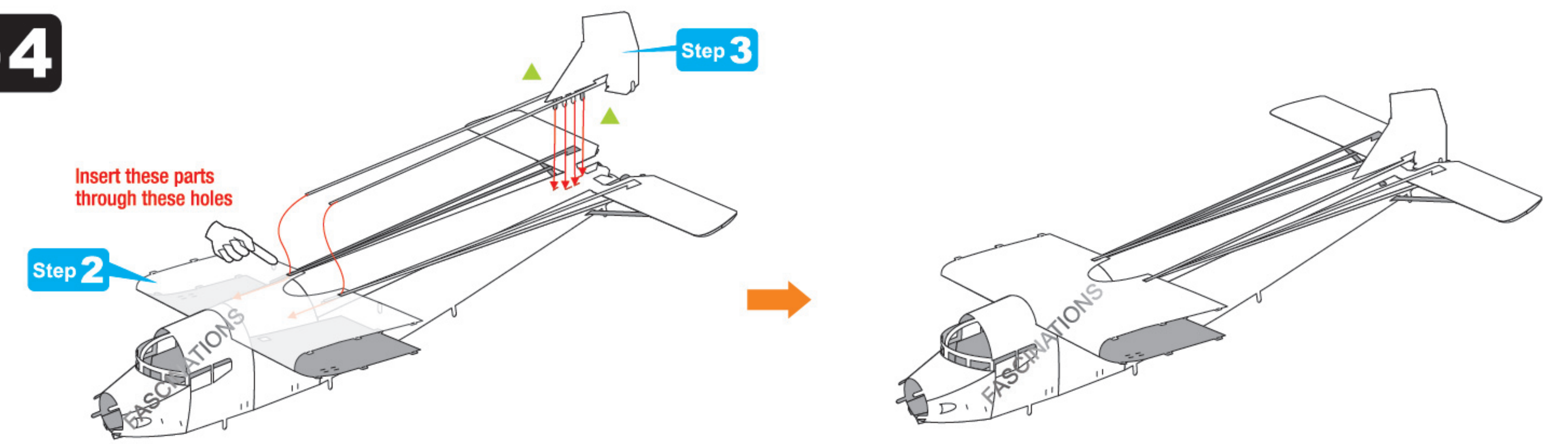




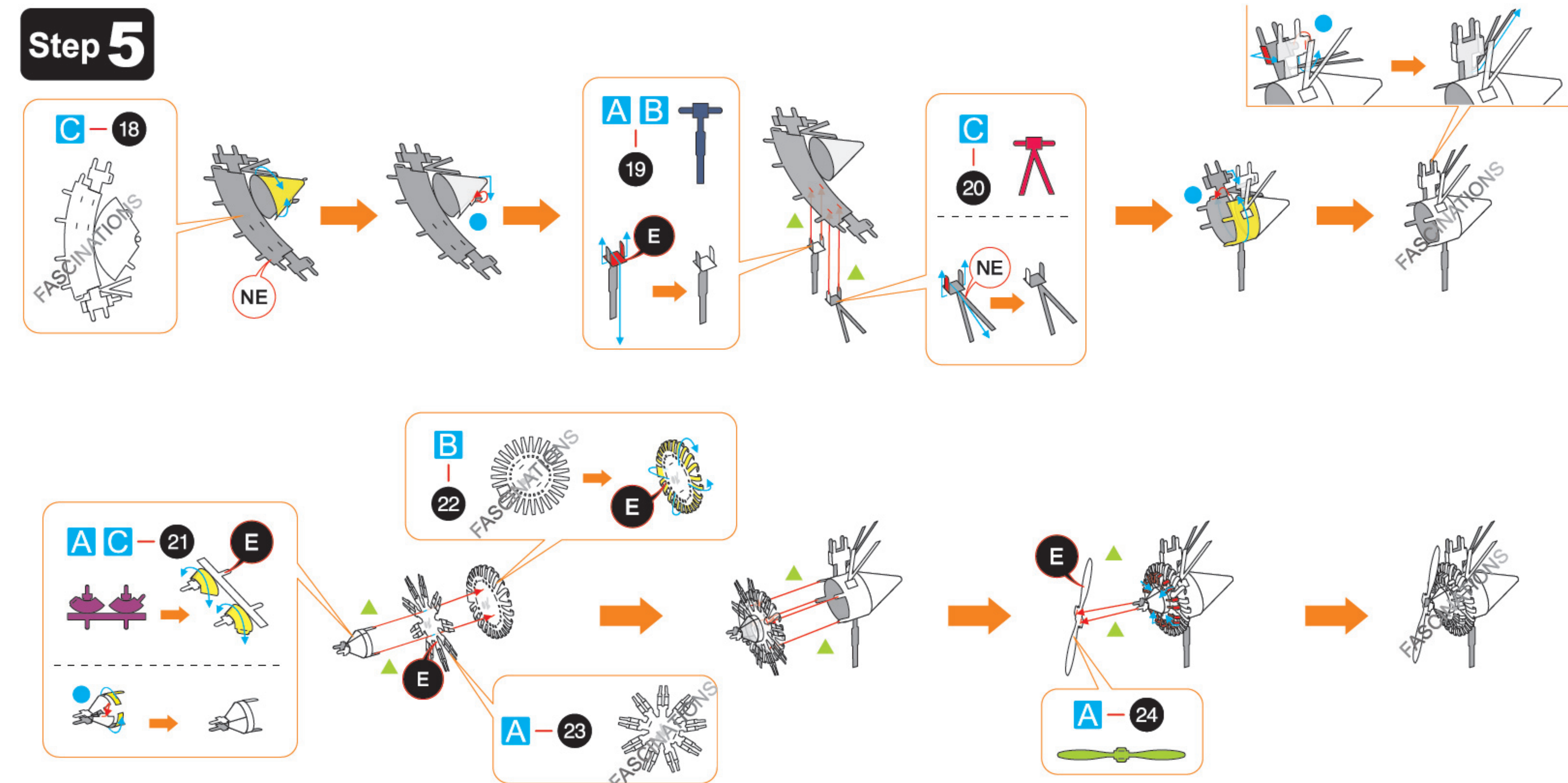
Step 3

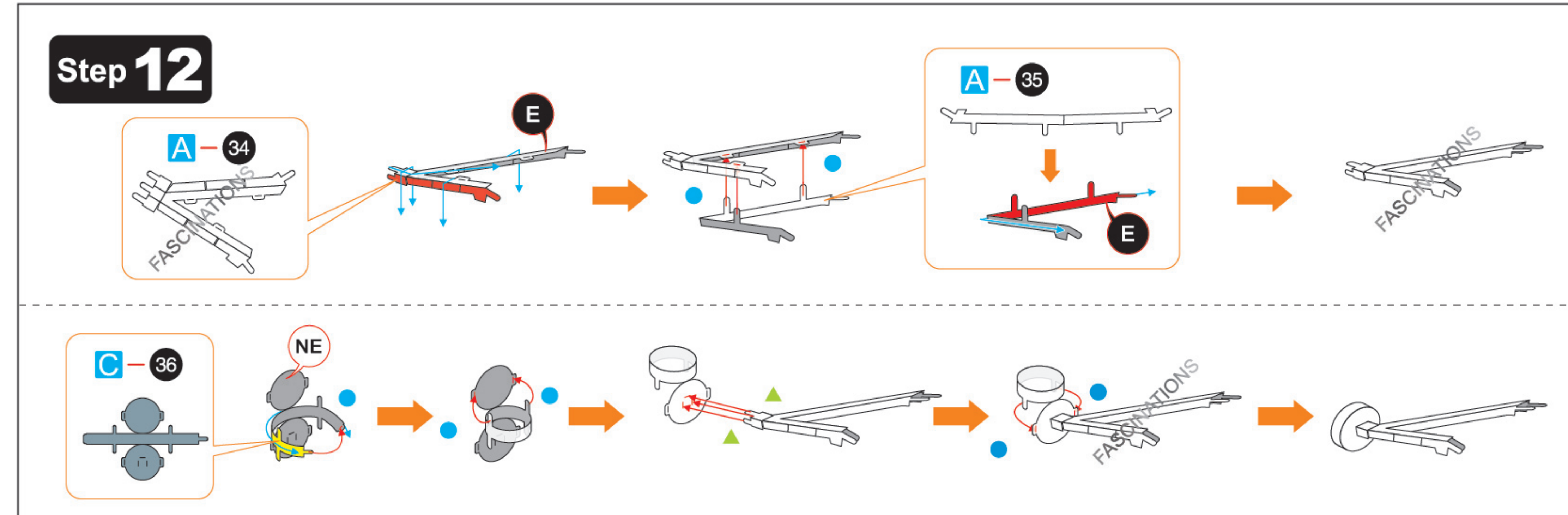
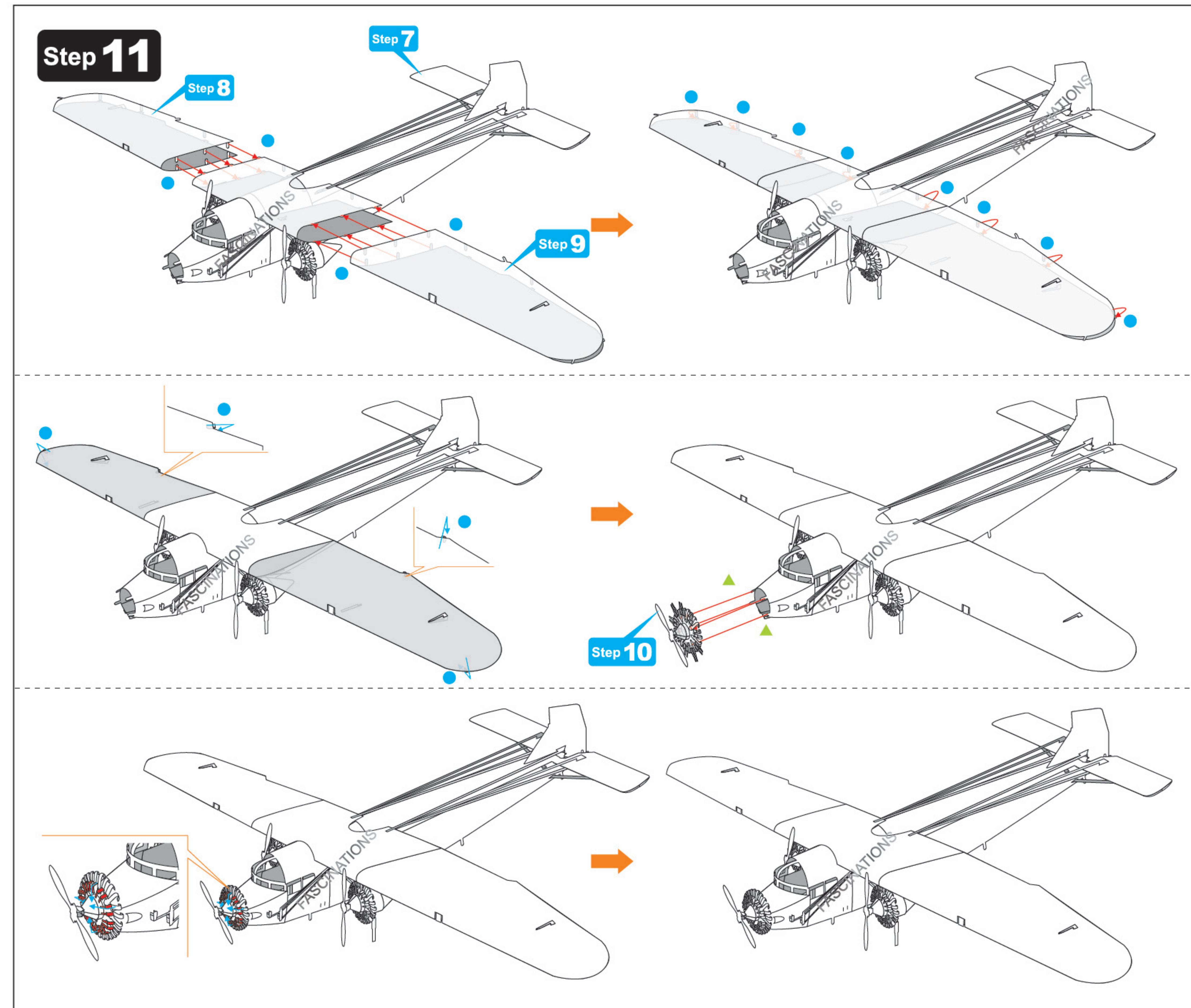
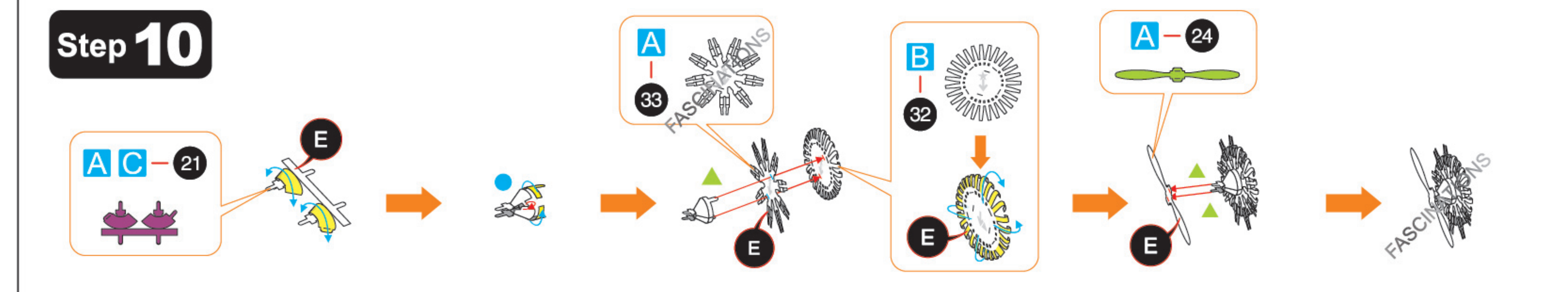
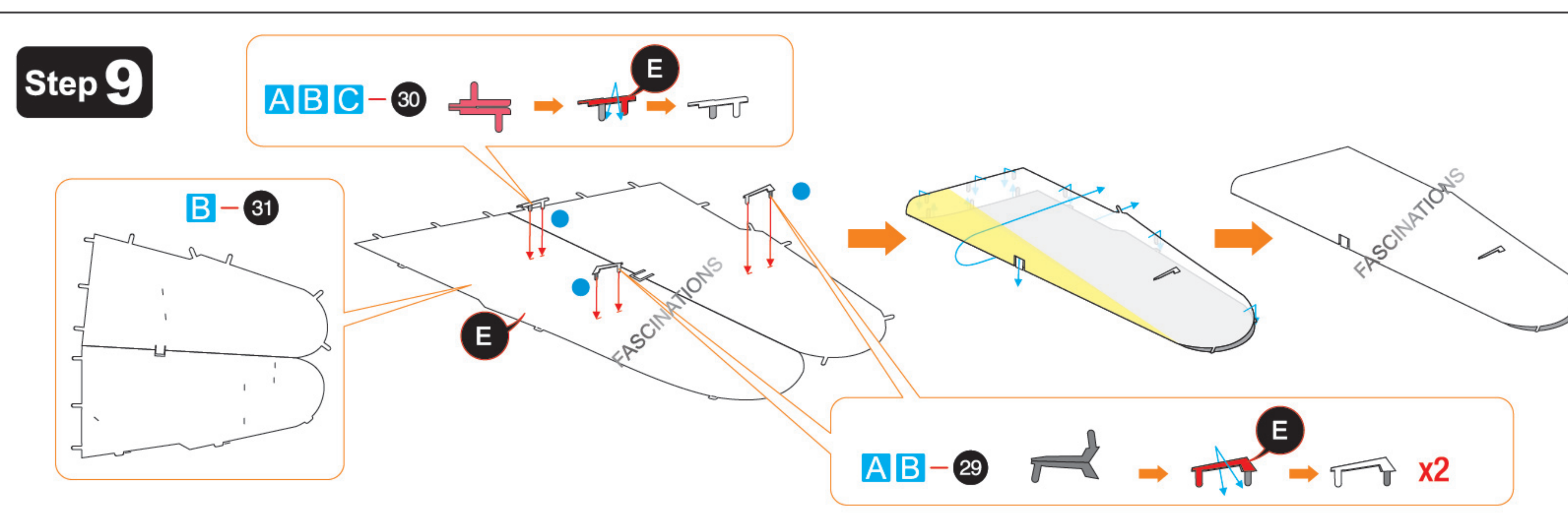
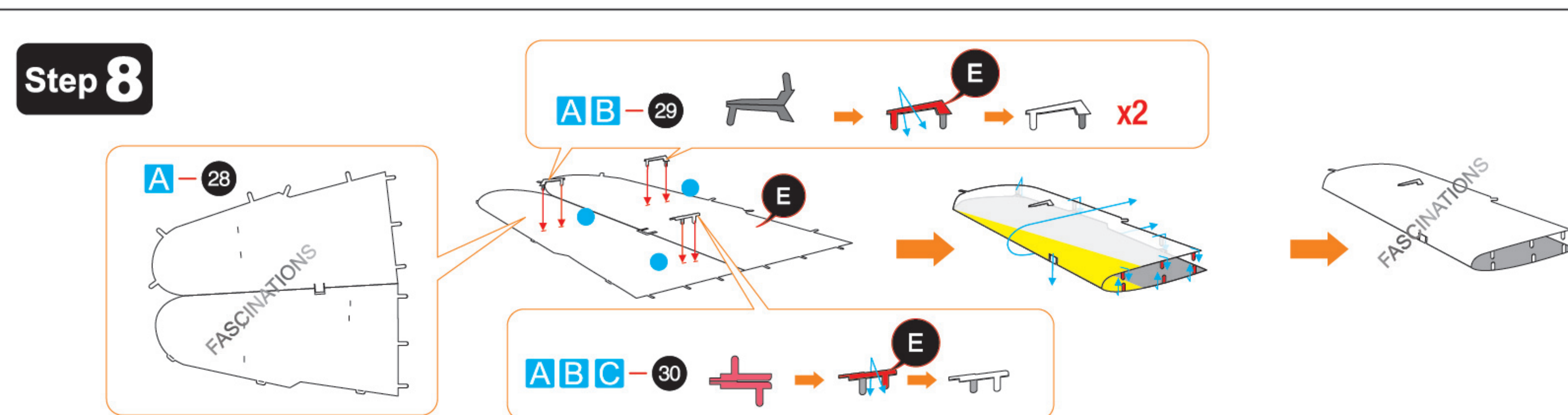
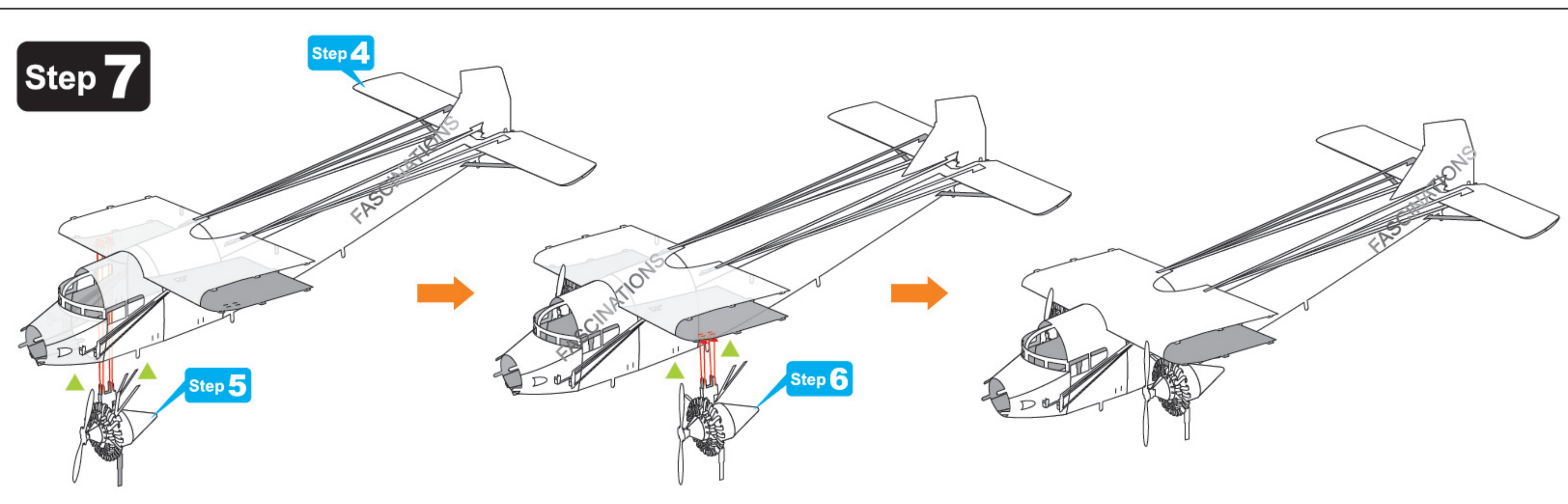
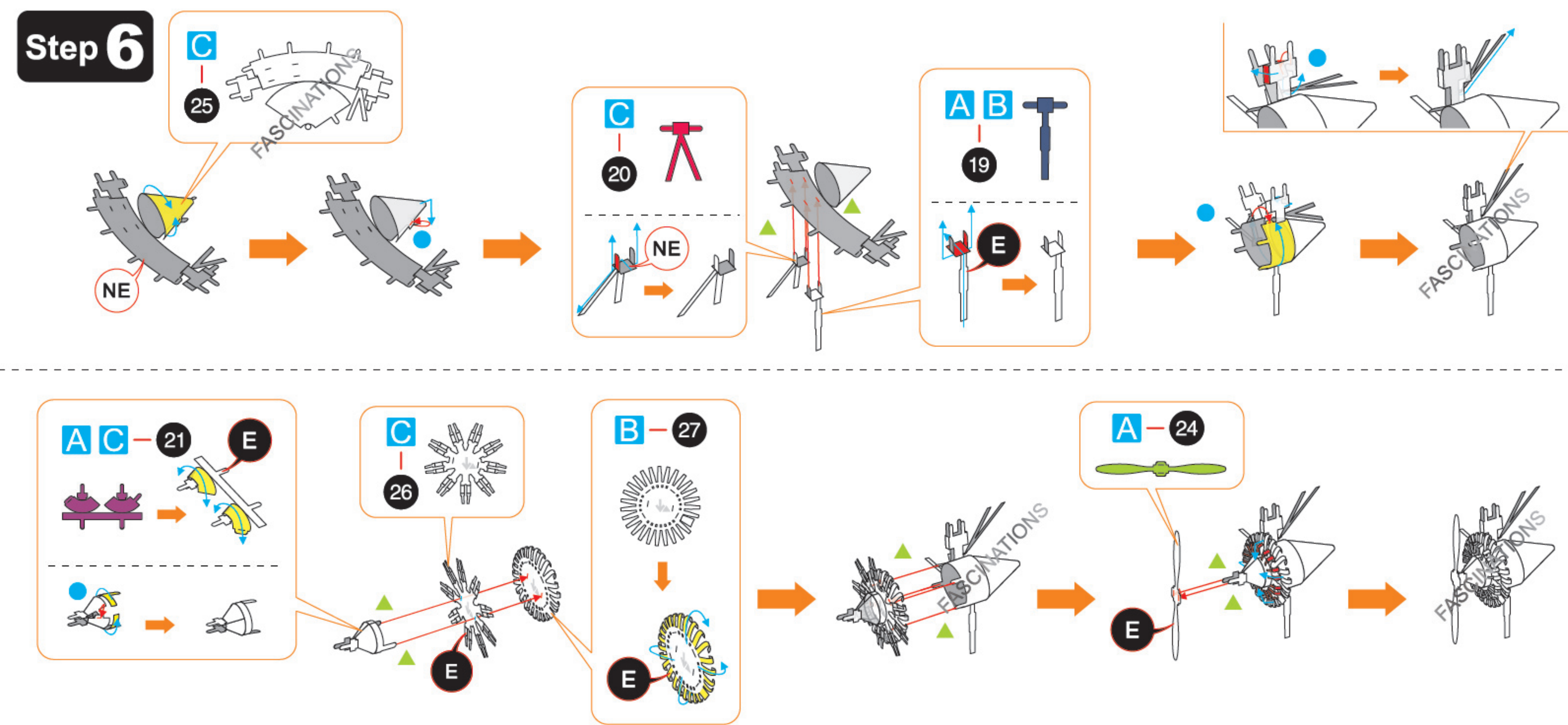


Step 4

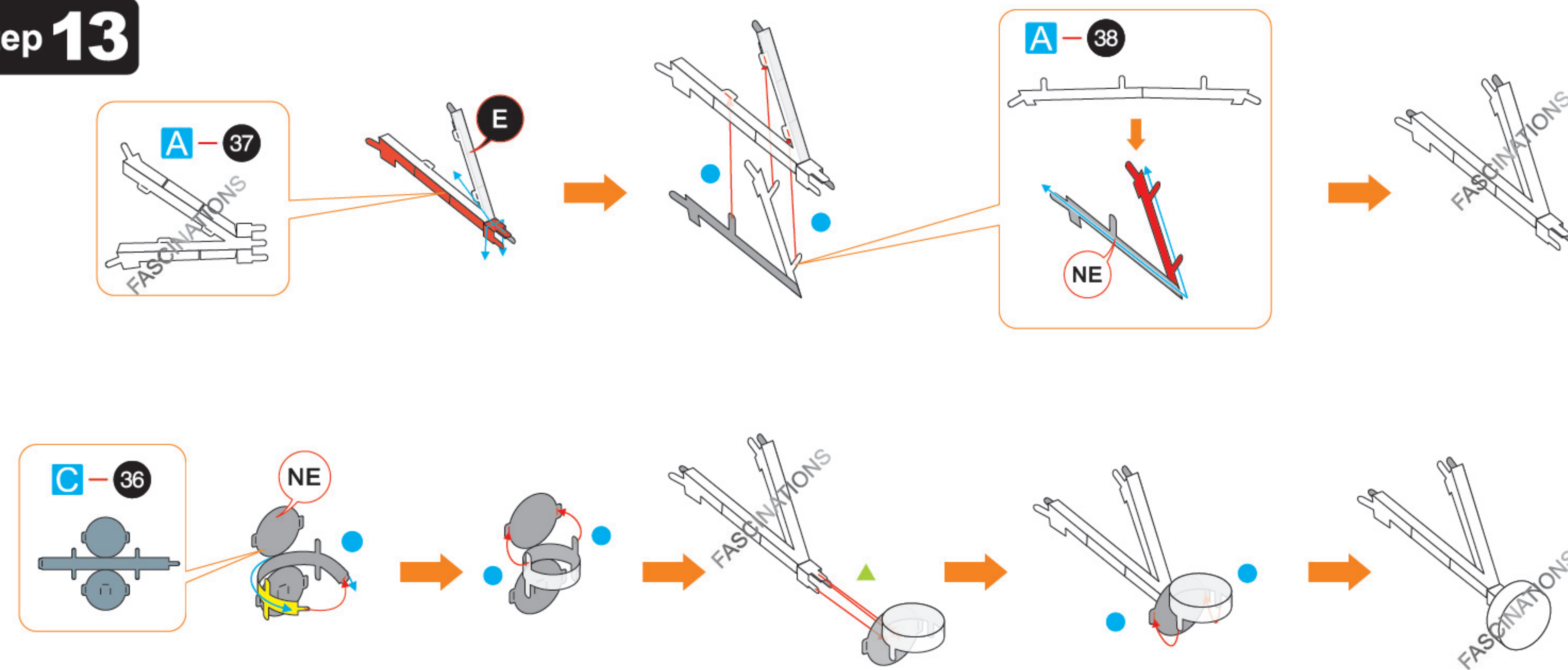


Step 5

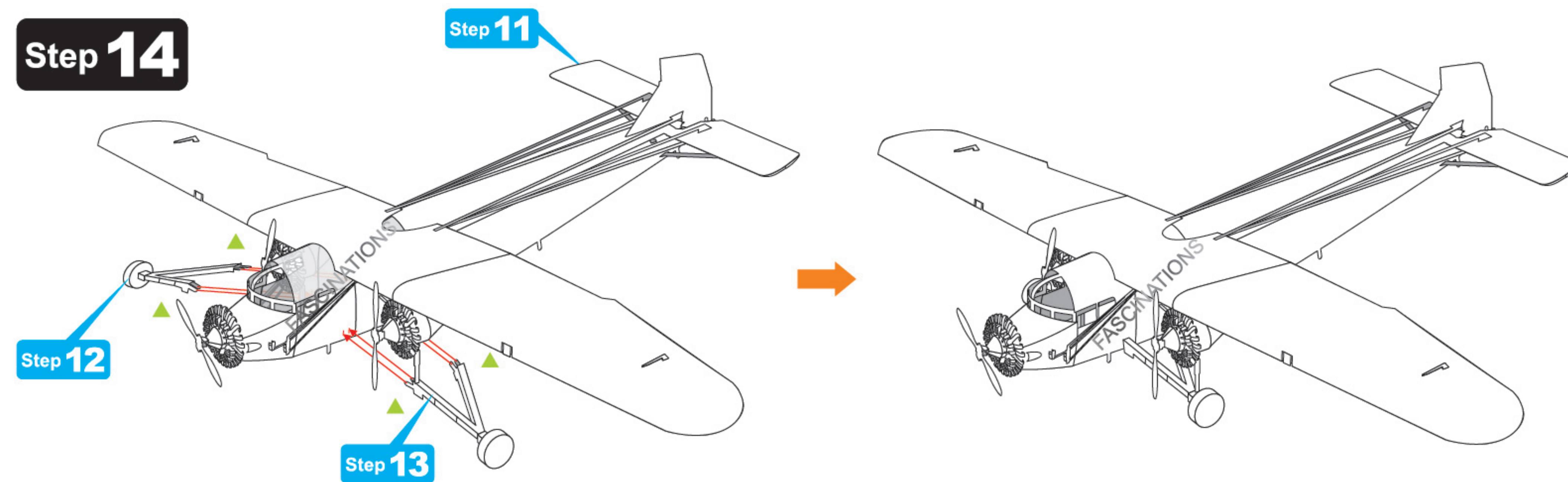




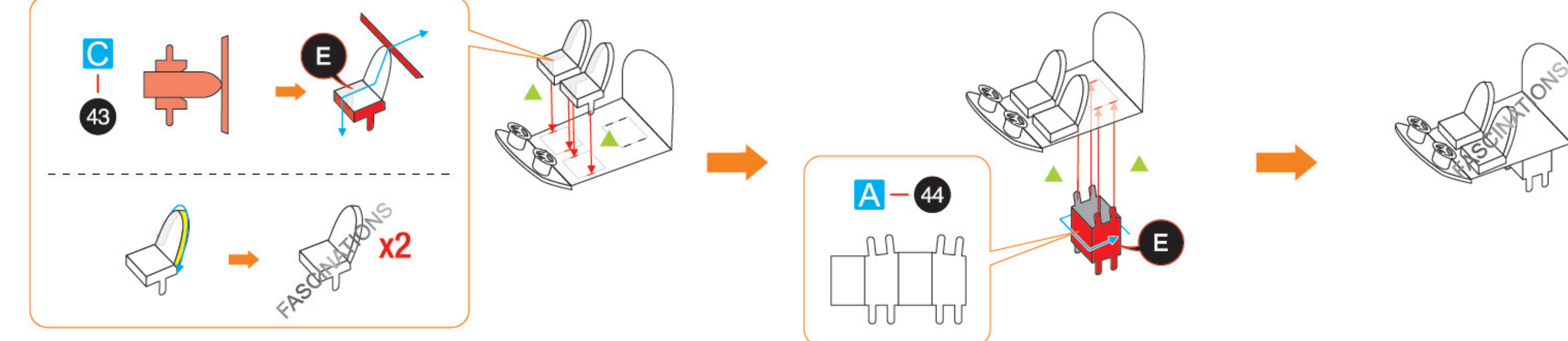
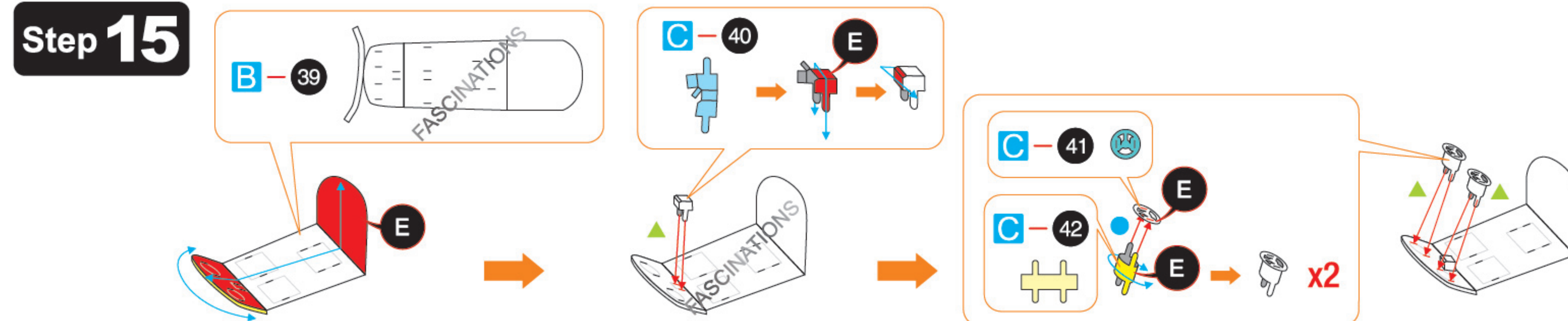
Step 13



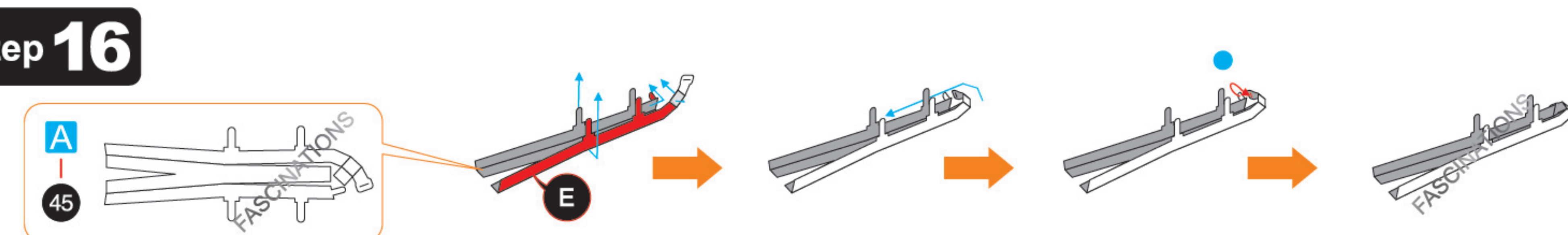
Step 14



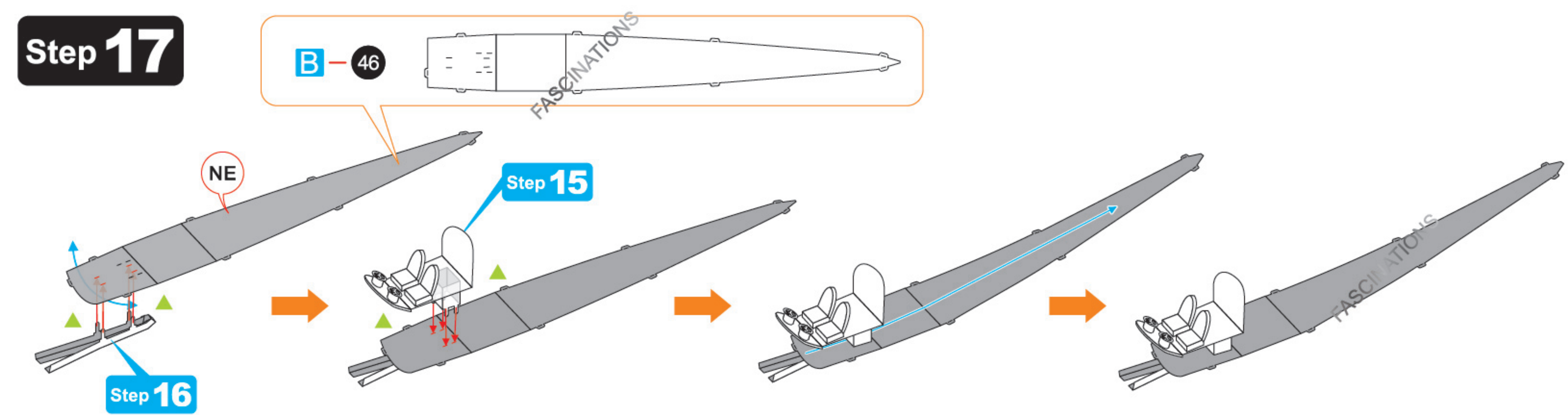
Step 15



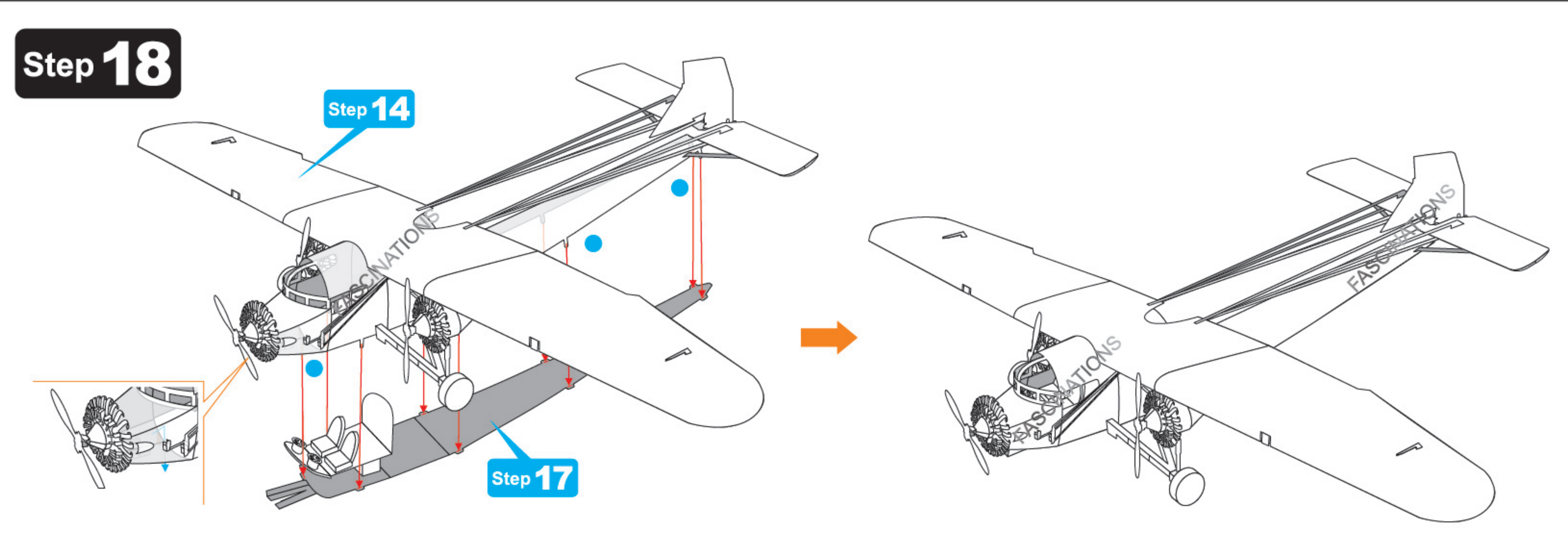
Step 16



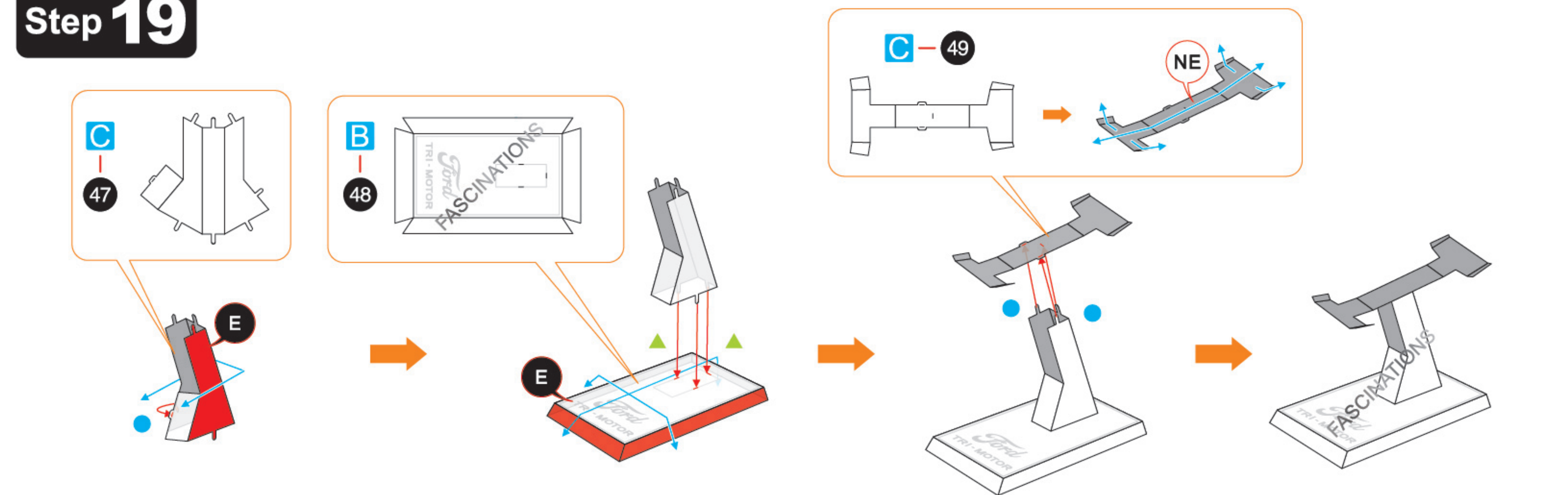
Step 17



Step 18



Step 19



Step 20

