

UH-1 HUEY HELICOPTER

ME1003

It is highly recommended that you visit

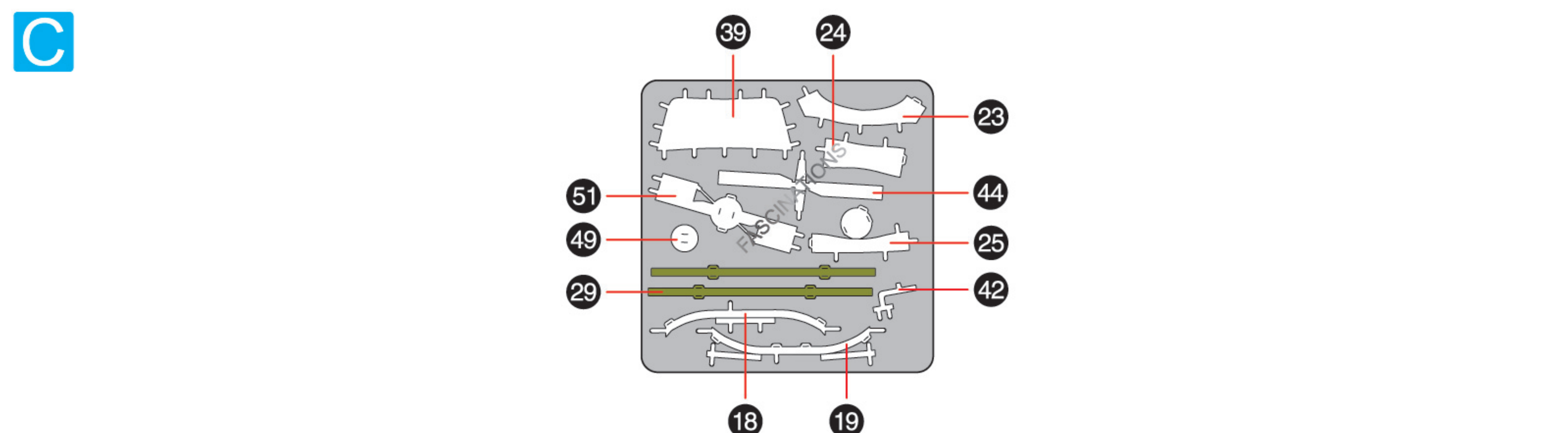
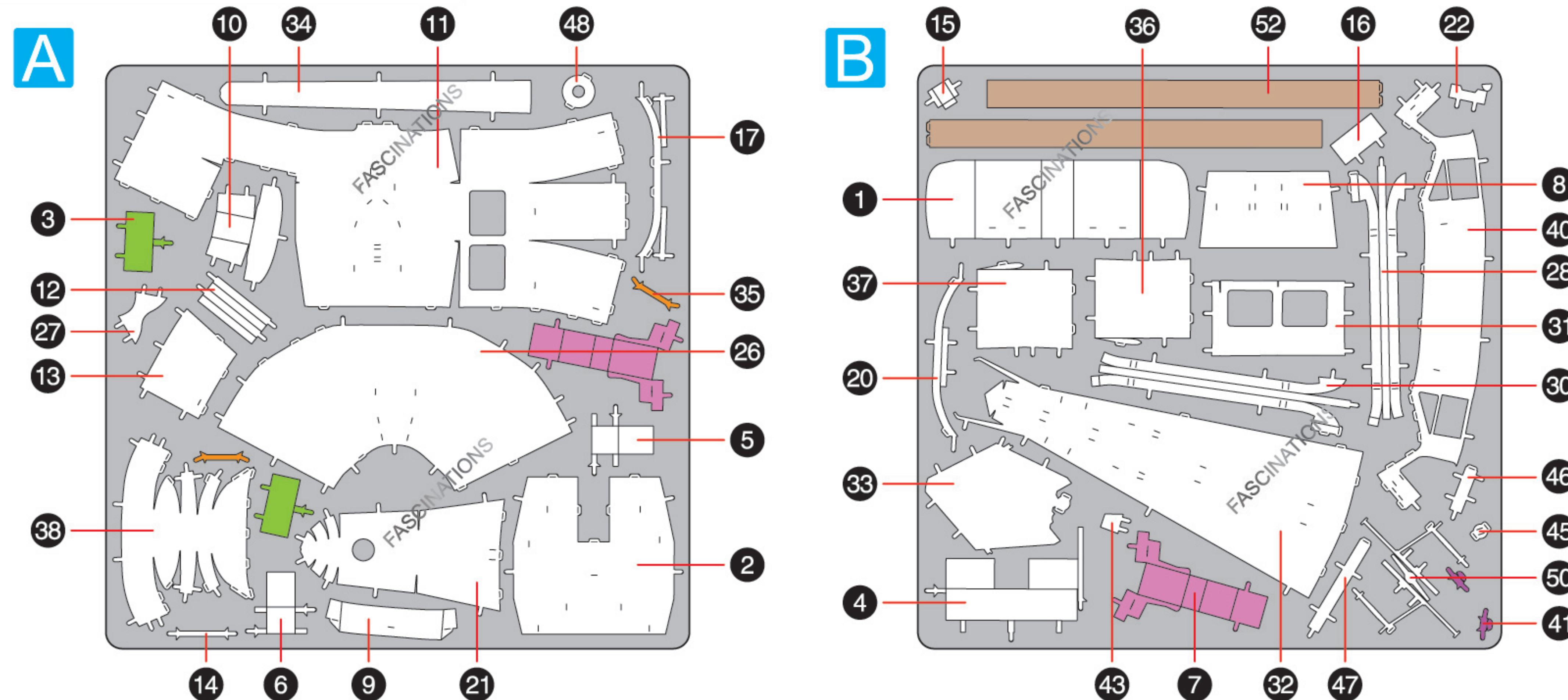
www.metal-earth.com/360/ME1003

to see the completed model before assembling your own

360°
view



METAL SHEETS



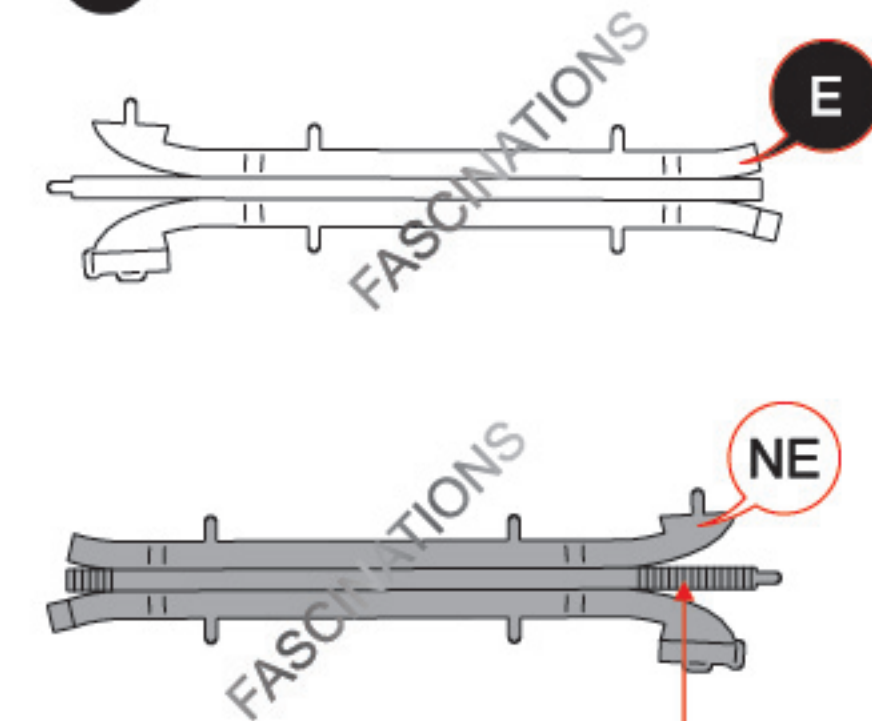
In order to avoid possible injury from sharp edges, please carefully discard the metal sheets after parts have been removed.



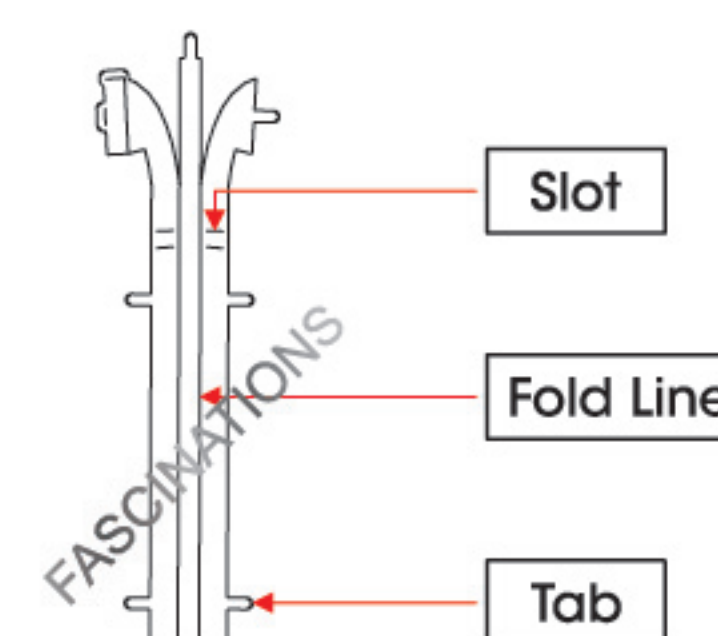
Go to www.metal-earth.com/360/ME1003 to see the zoomable PDF version of this instruction sheet

TO CREATE THE BEST CONNECTIONS

B-28



Consider these engraved stripes as supporting features for the bend



Legends:

- E** Engraved/ Color side
- NE** Non - engraved/ Silver side
- Attention point
- Insert tab and bend 90 degrees
- Insert tab and twist 90 degrees

Assembly tip:

If needed, slightly twist tabs to hold parts together then untwist and bend them down for a nice finish.

Yellow areas should be curled

Red areas should be folded

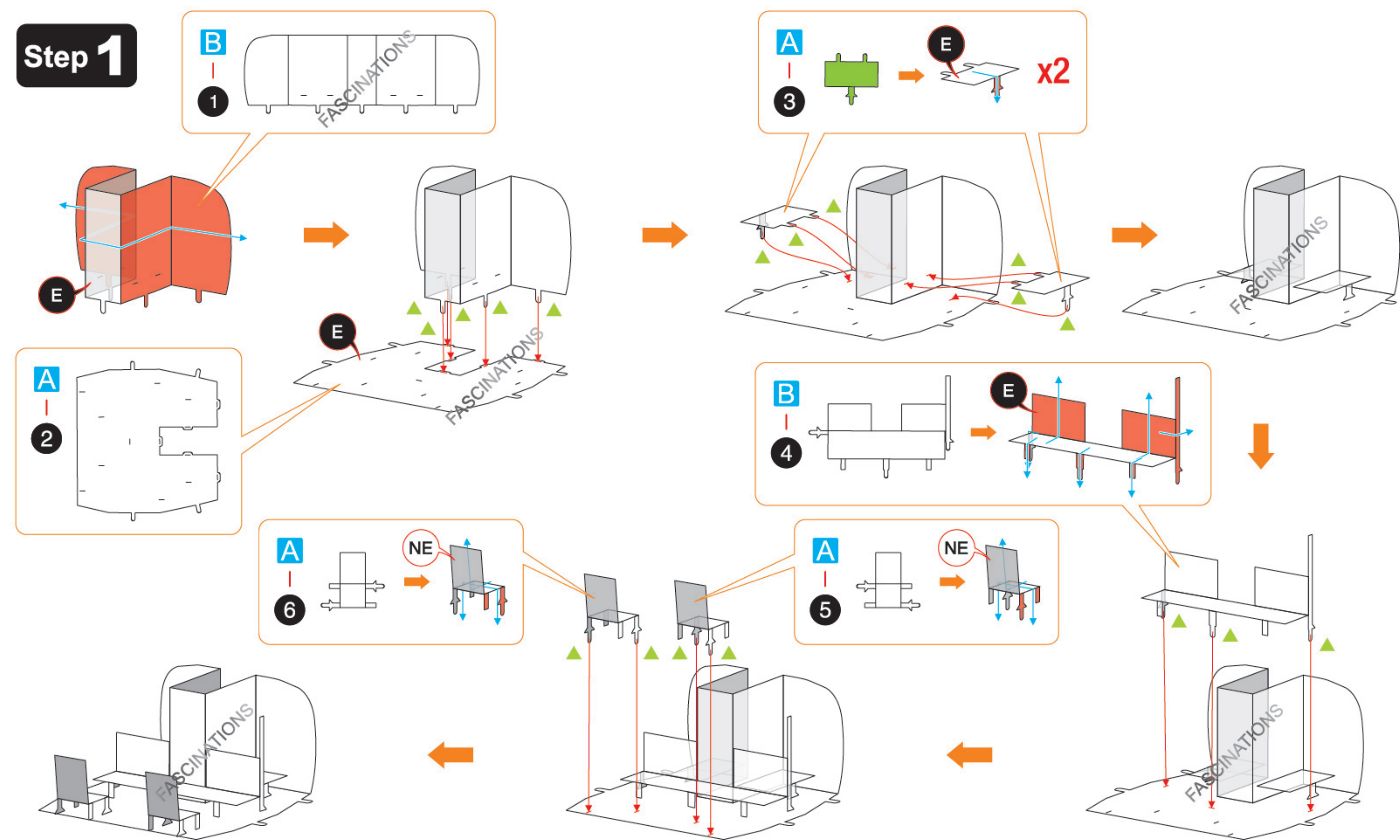
Recommended tools:

- Wire cutters: helpful for taking parts from the metal sheets.

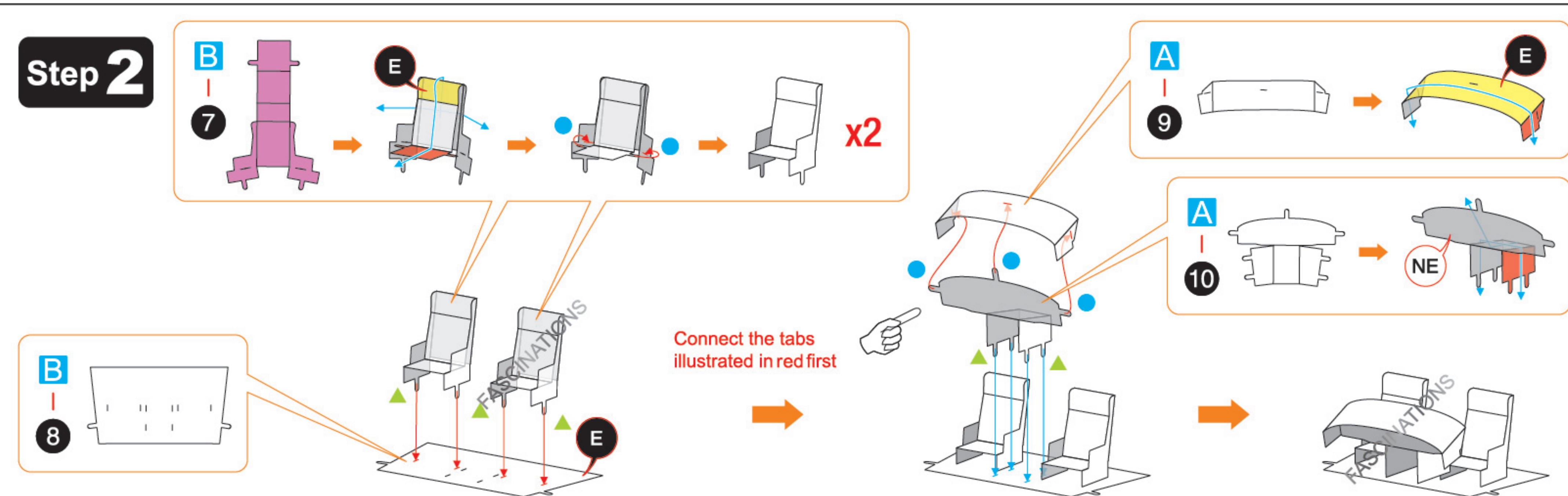
- Tweezers or needle nose pliers: helpful for folding parts, bending and twisting tabs.

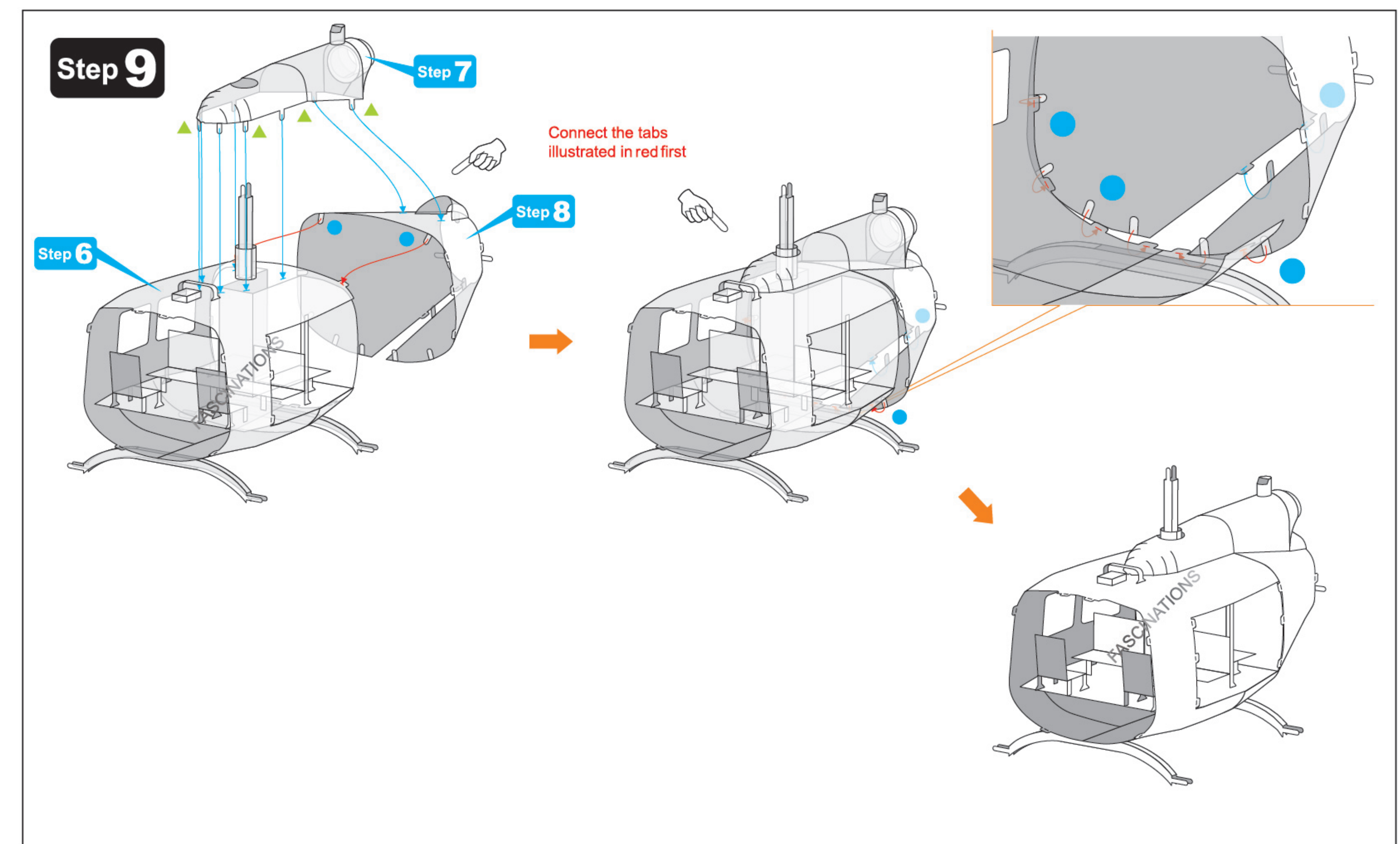
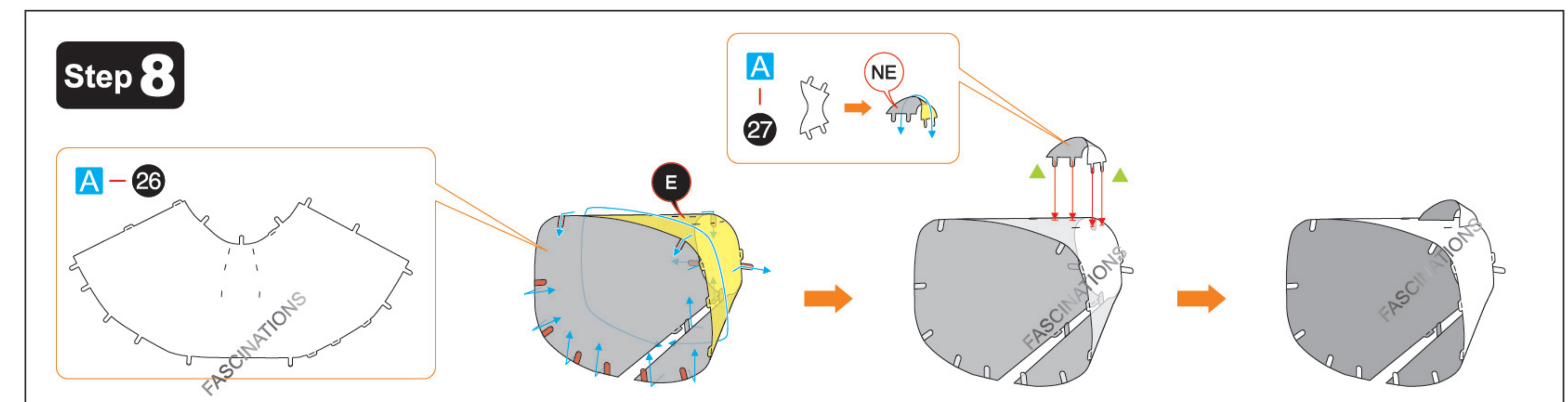
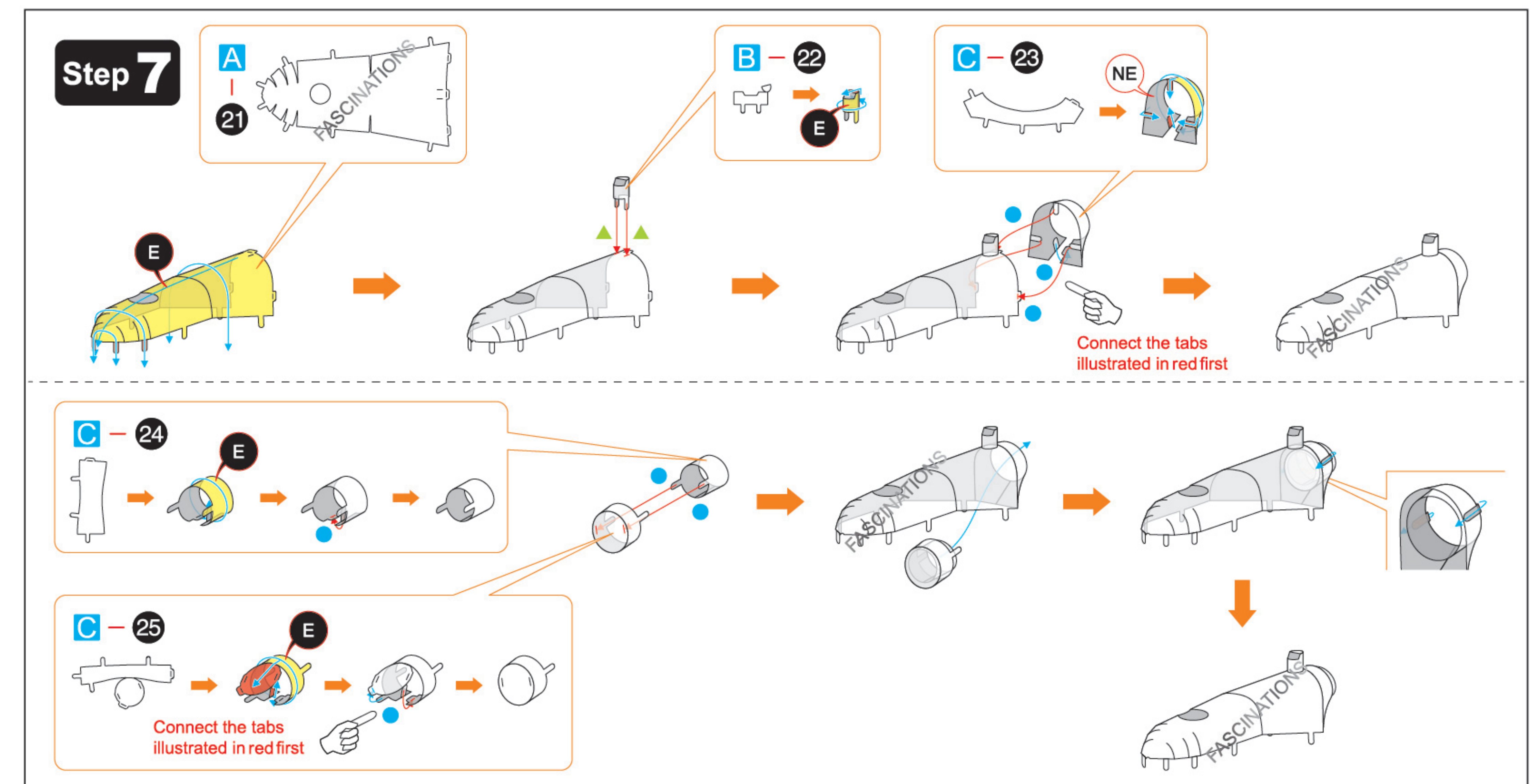
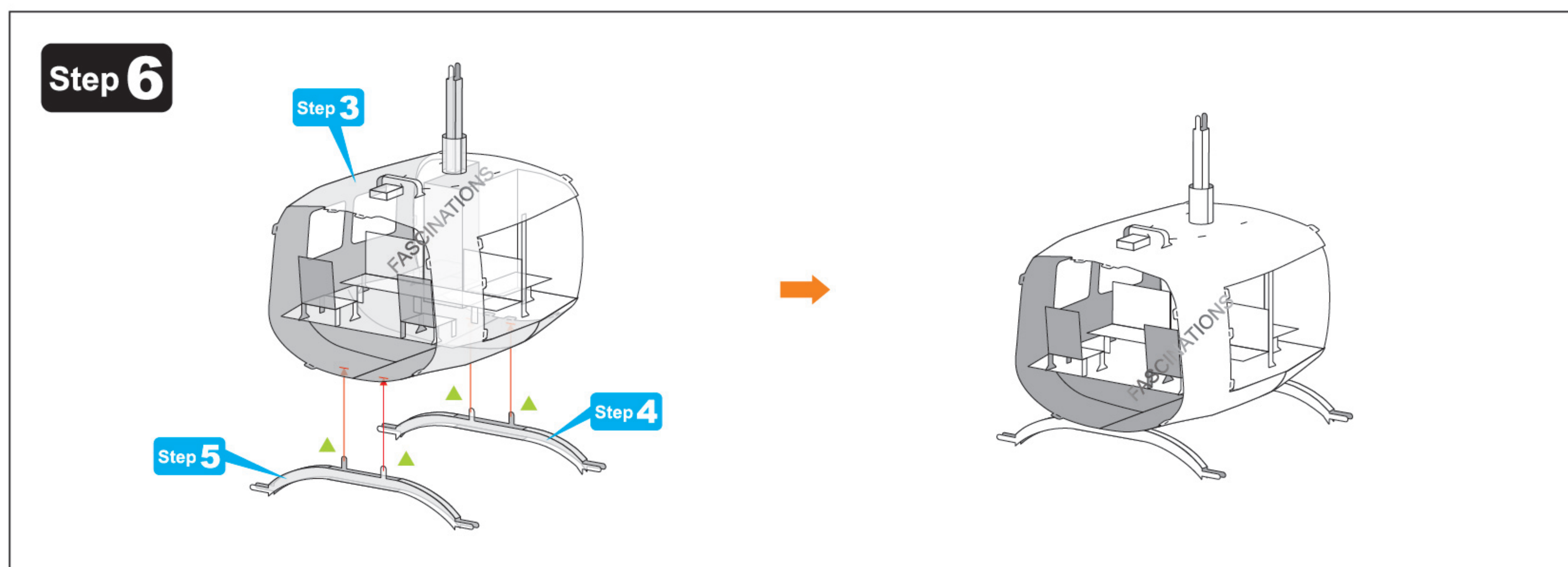
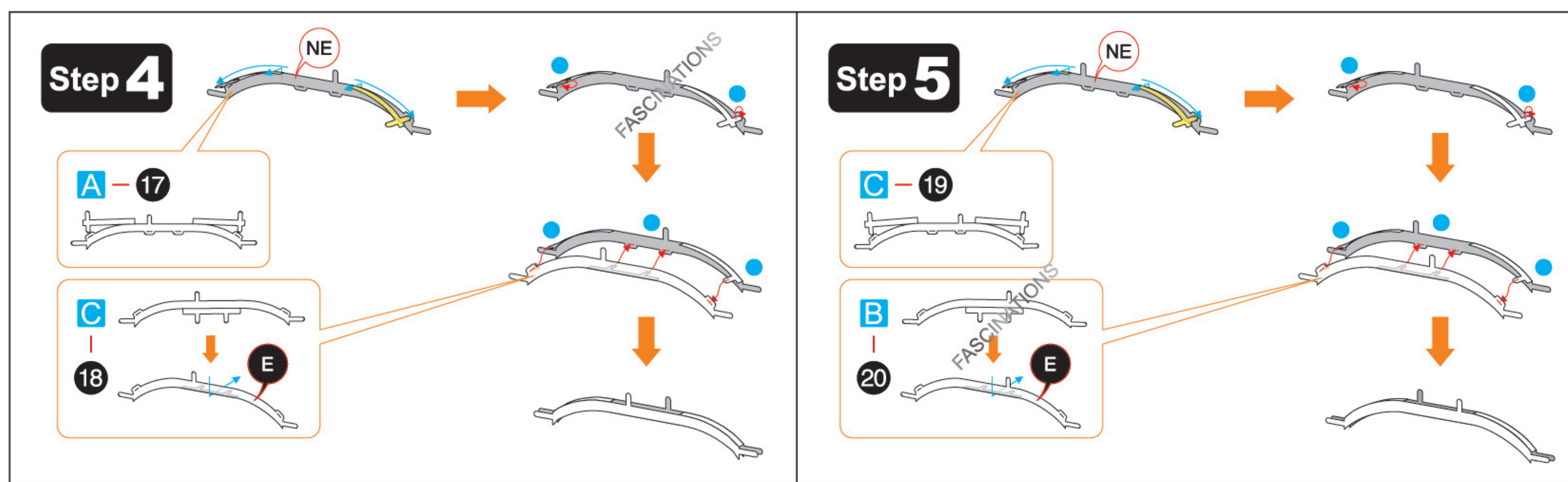
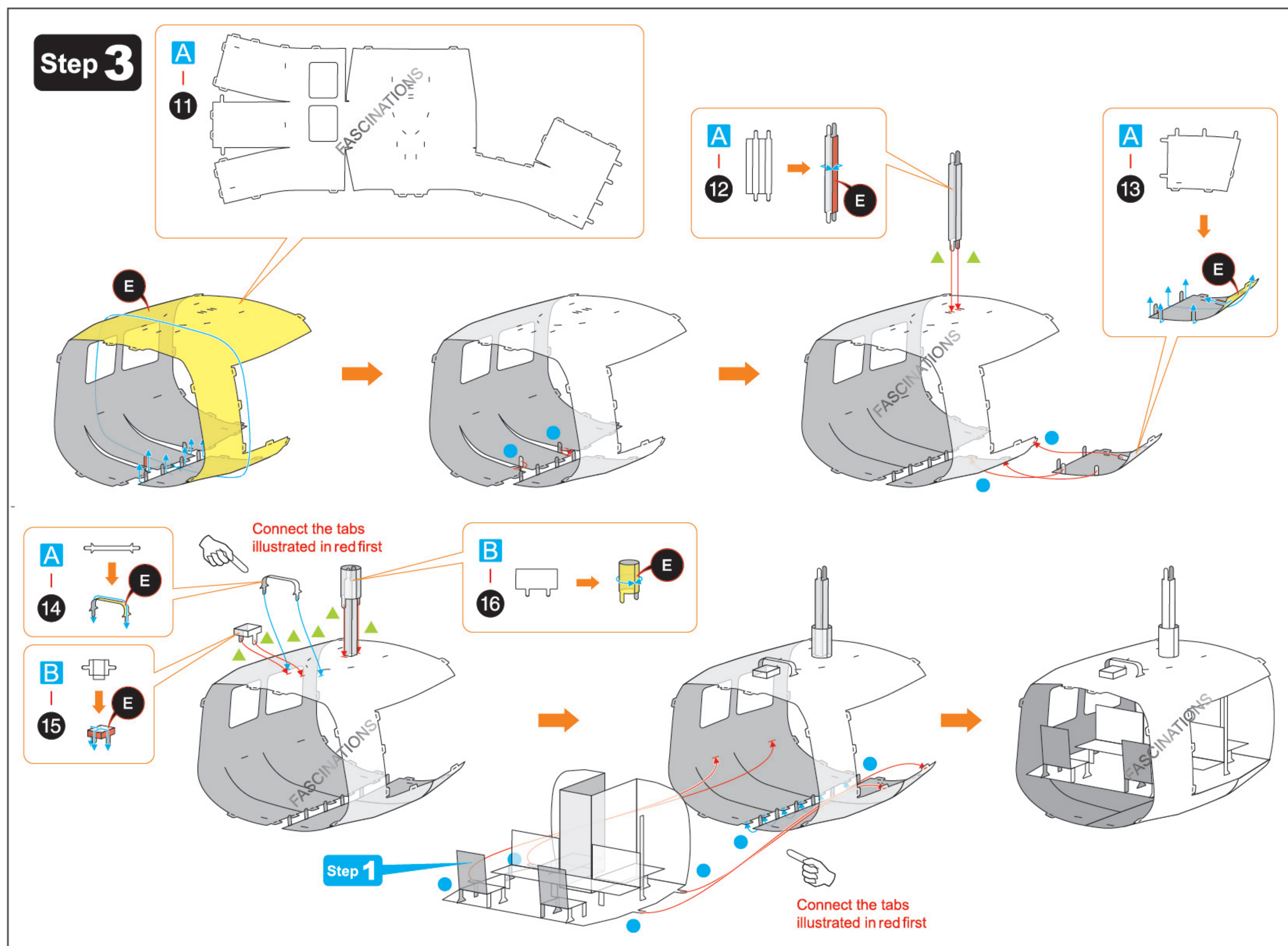
ASSEMBLY FLOW CHART

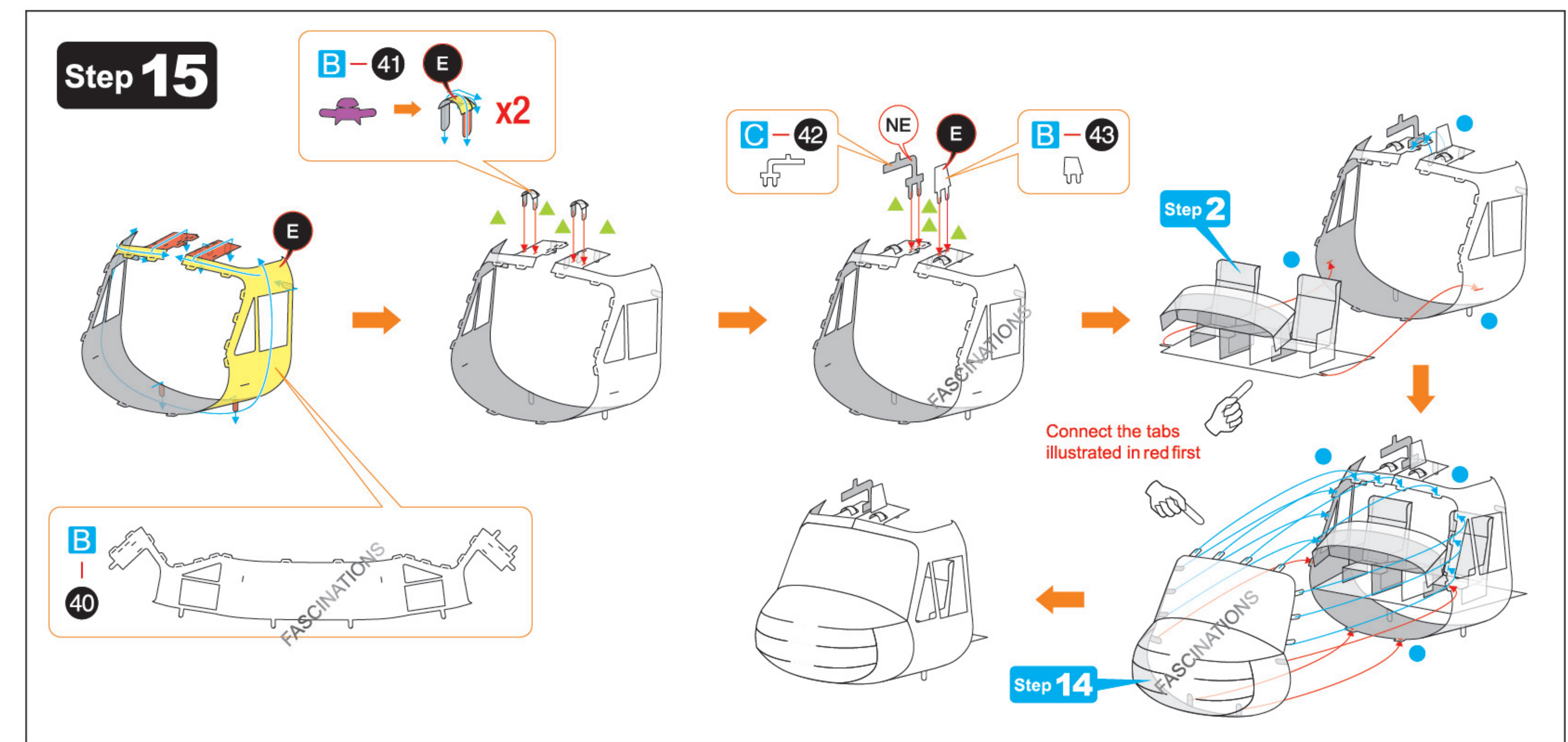
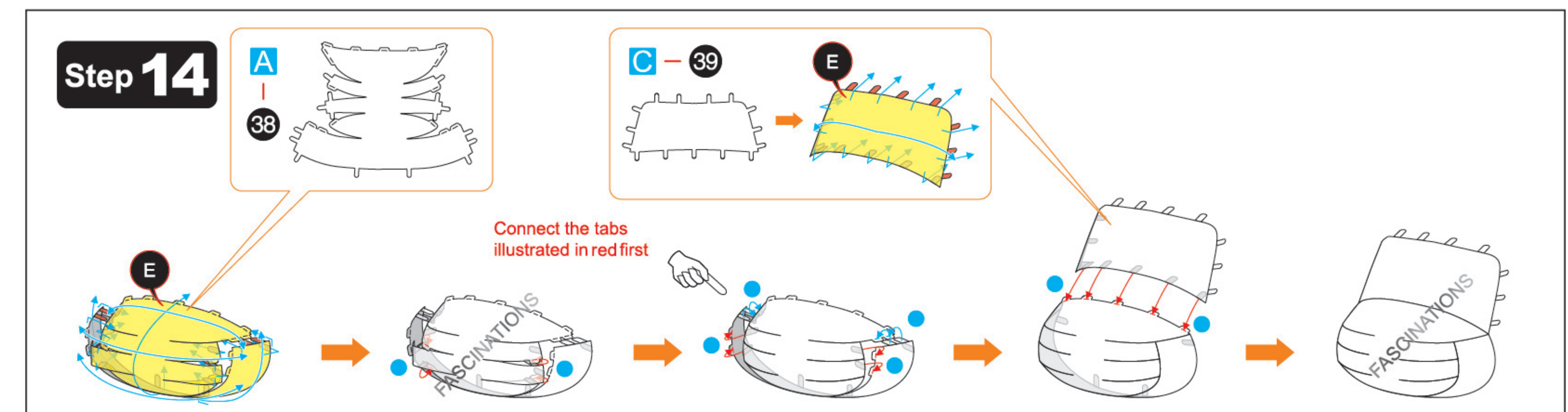
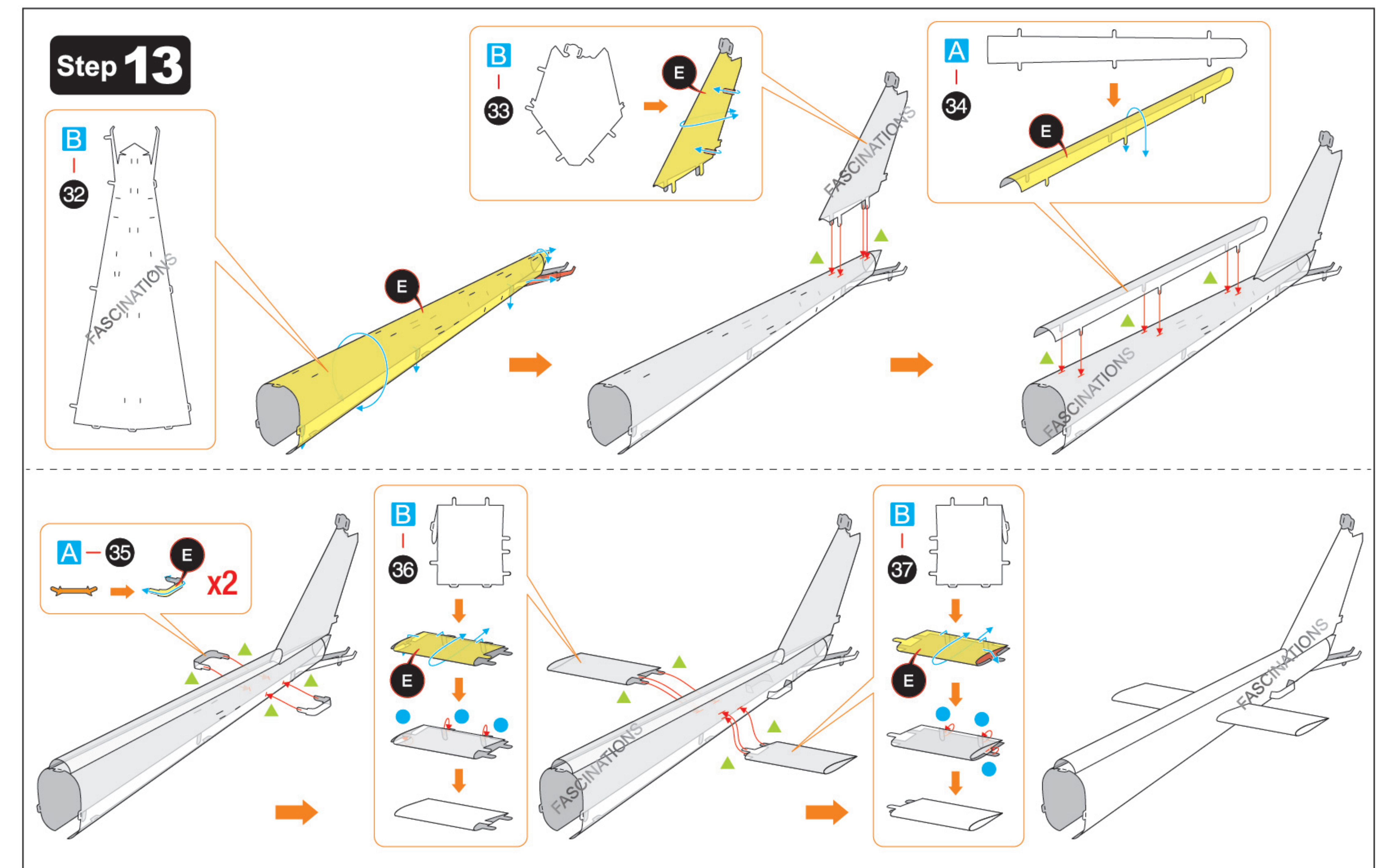
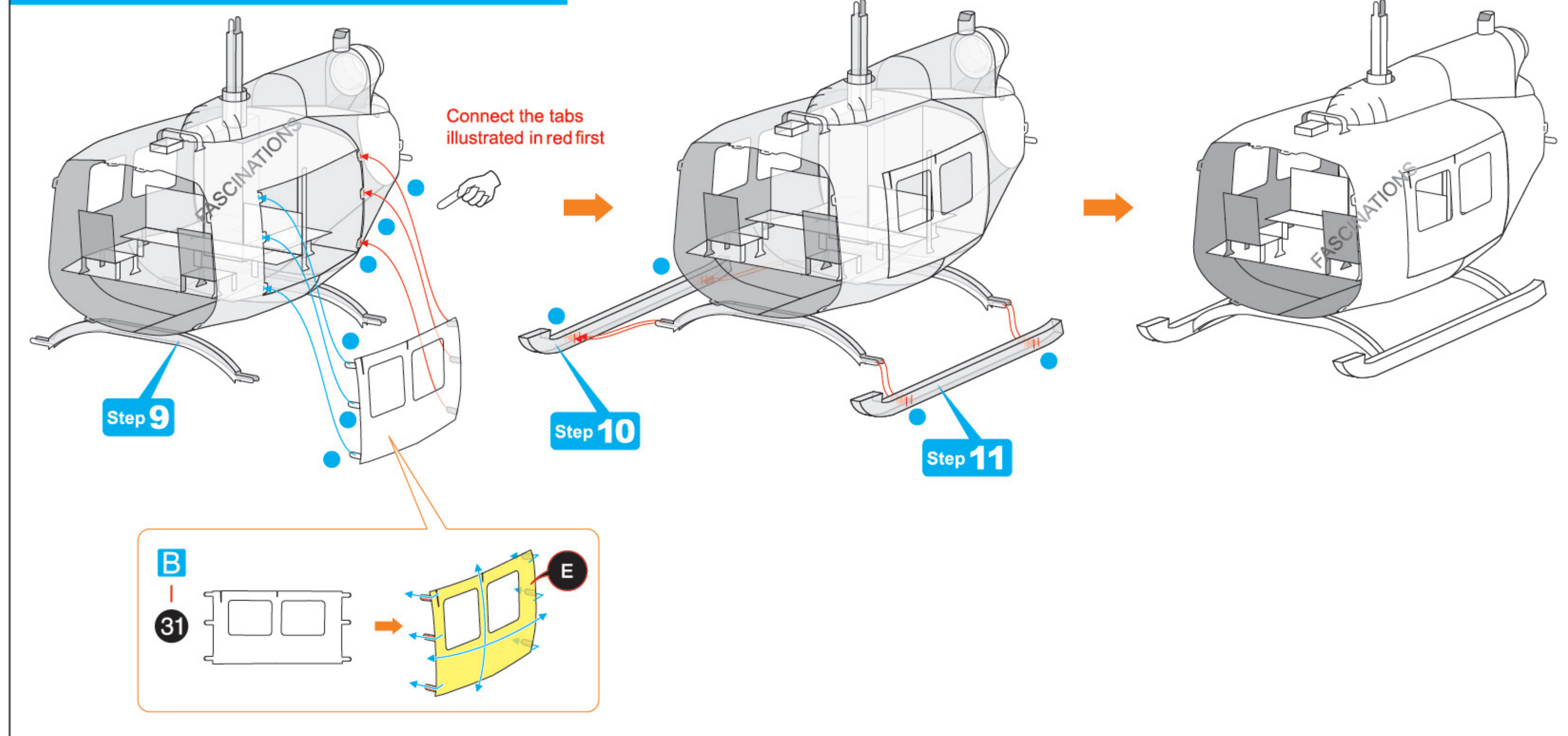
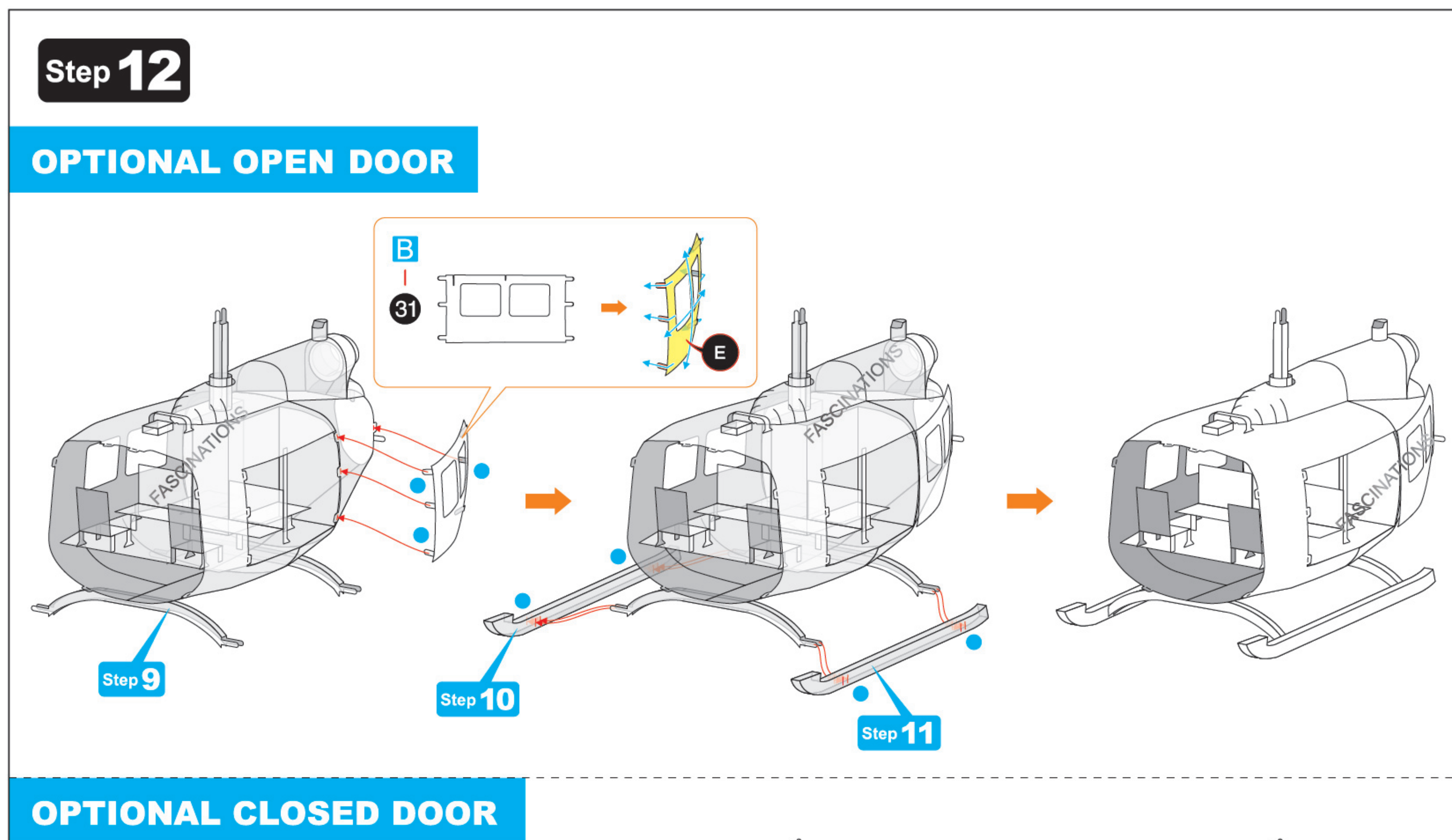
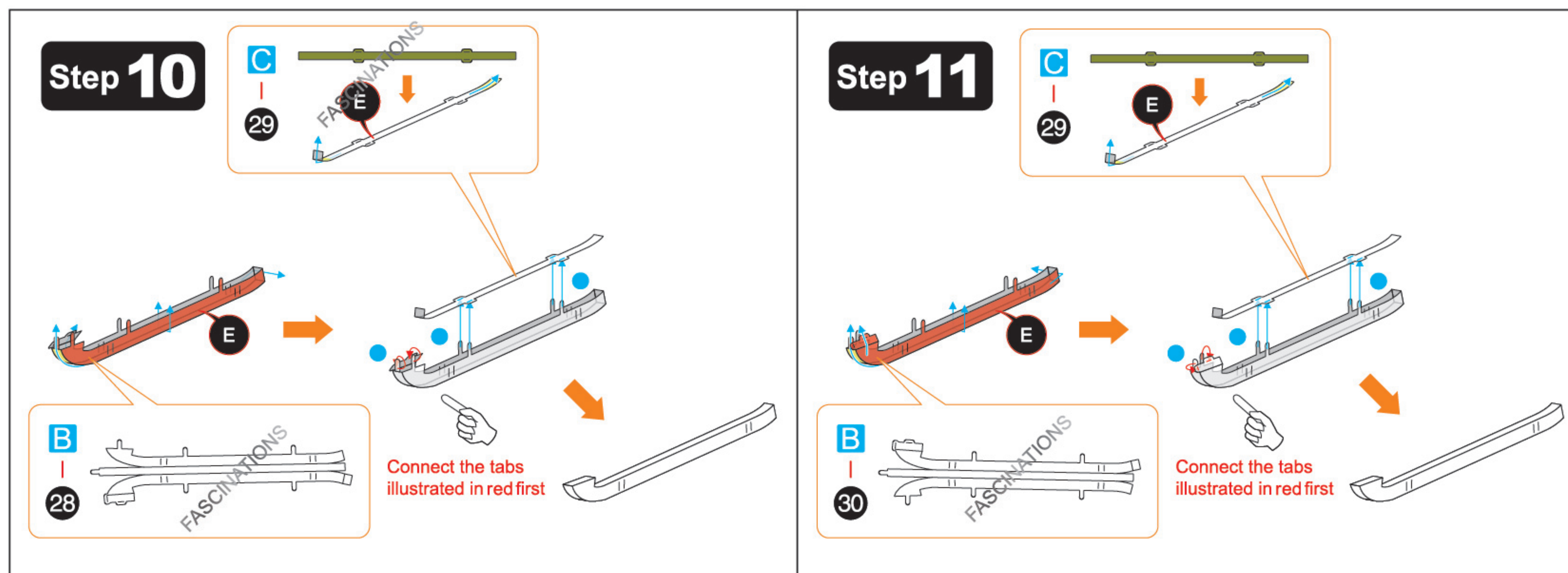
Step 1



Step 2







Step 16

