

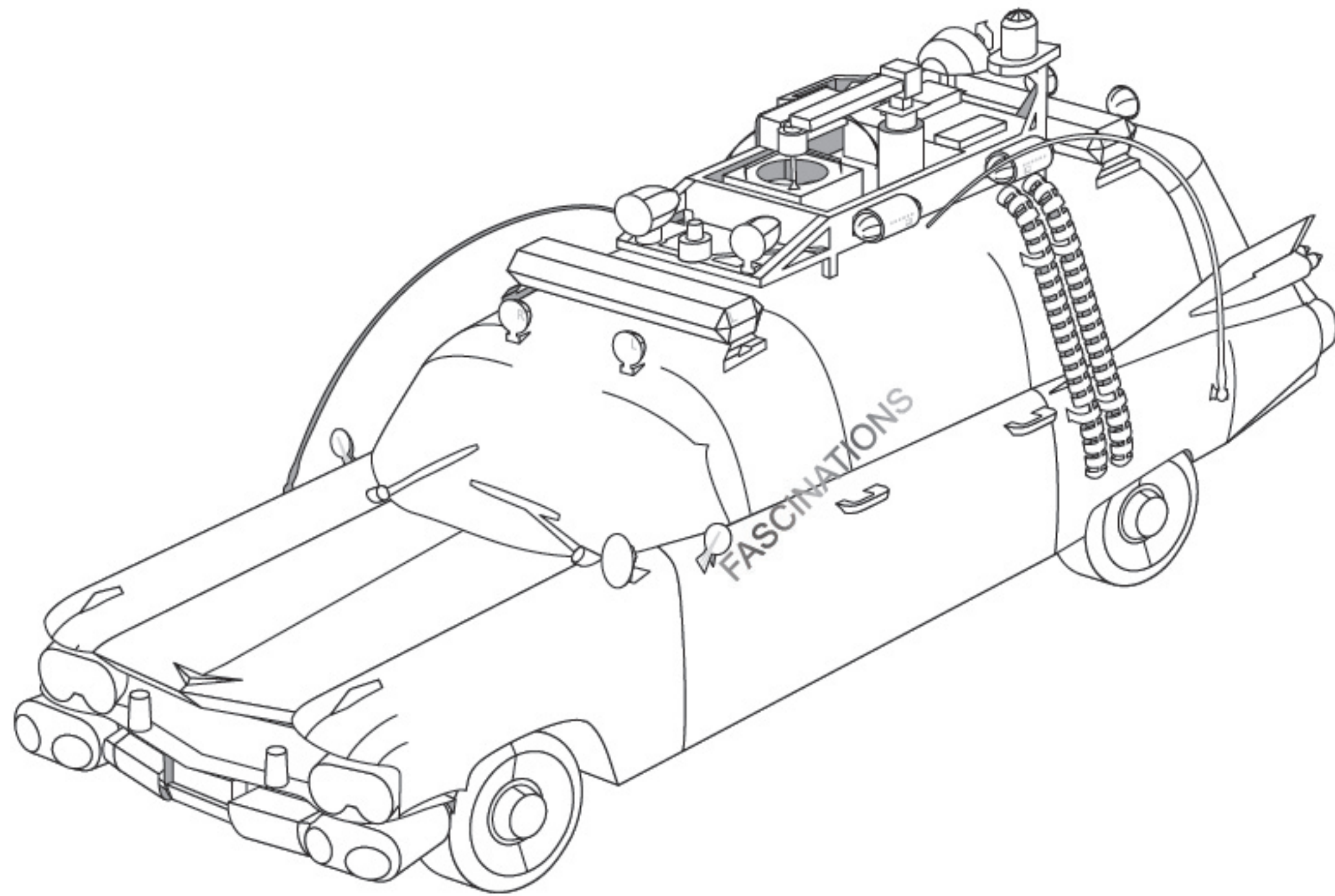


It is highly recommended that you visit
www.metalearth.com/360/ICX230
to see the completed model before assembling your own

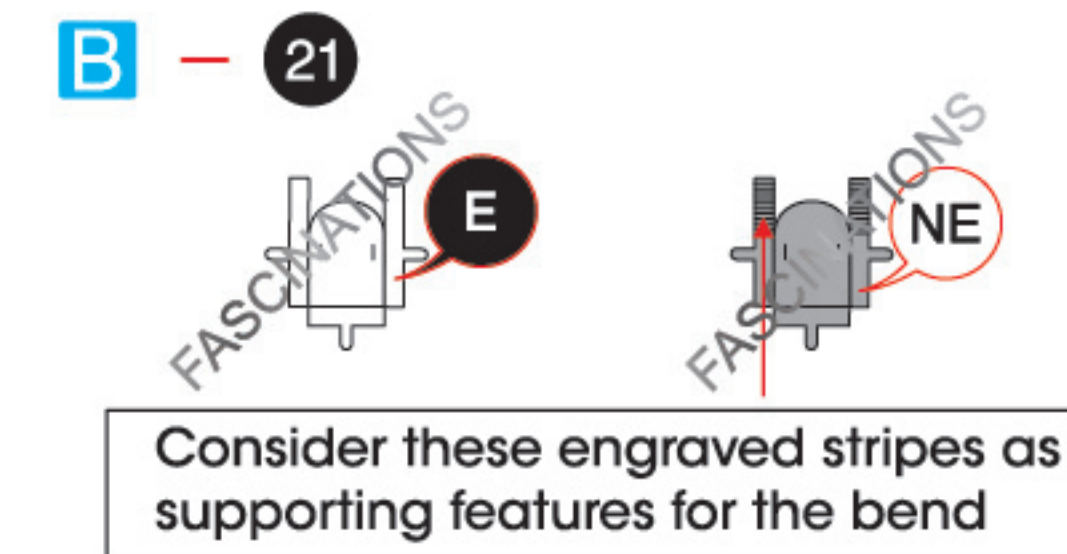


Go to www.metalearth.com/360/ICX230 to see the zoomable PDF version of this instruction sheet

ICX230 ECTO-1



TO CREATE THE BEST CONNECTIONS



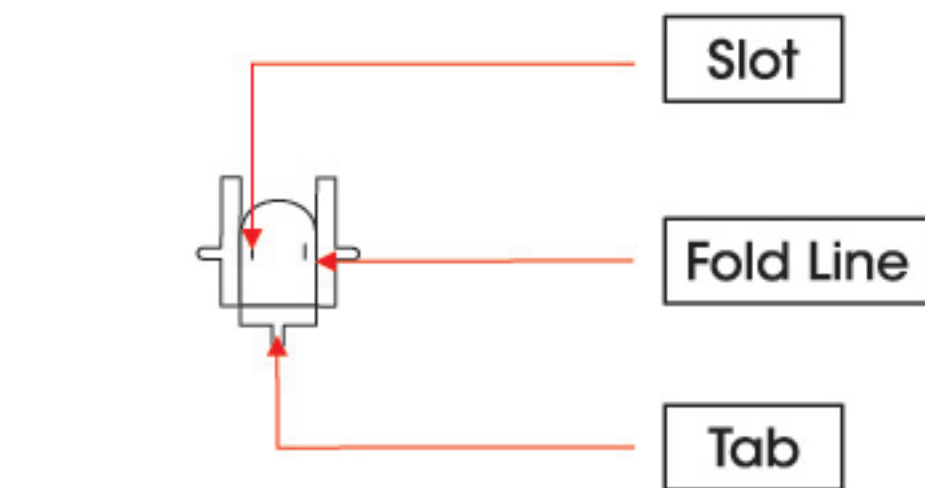
Legends:

- E** Engraved/ Color side
- NE** Non - engraved/ Silver side
- Attention point
- Insert tab and bend 90 degrees
- Insert tab and twist 90 degrees

Assembly tip:

If needed, slightly twist tabs to hold parts together then untwist and bend them down for a nice finish.

- Yellow areas should be curled
- Red areas should be folded

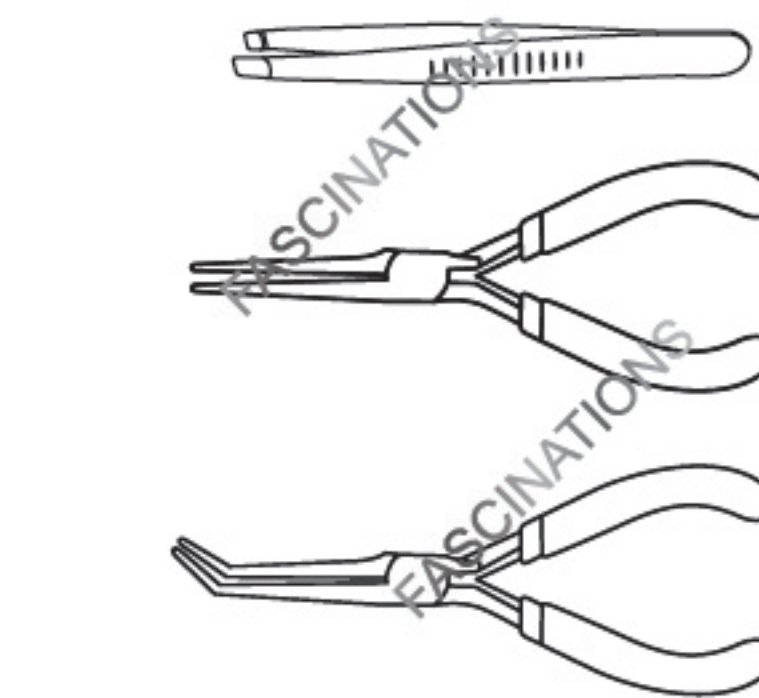


Recommended tools:

- Wire cutters: helpful for taking parts from the metal sheets.

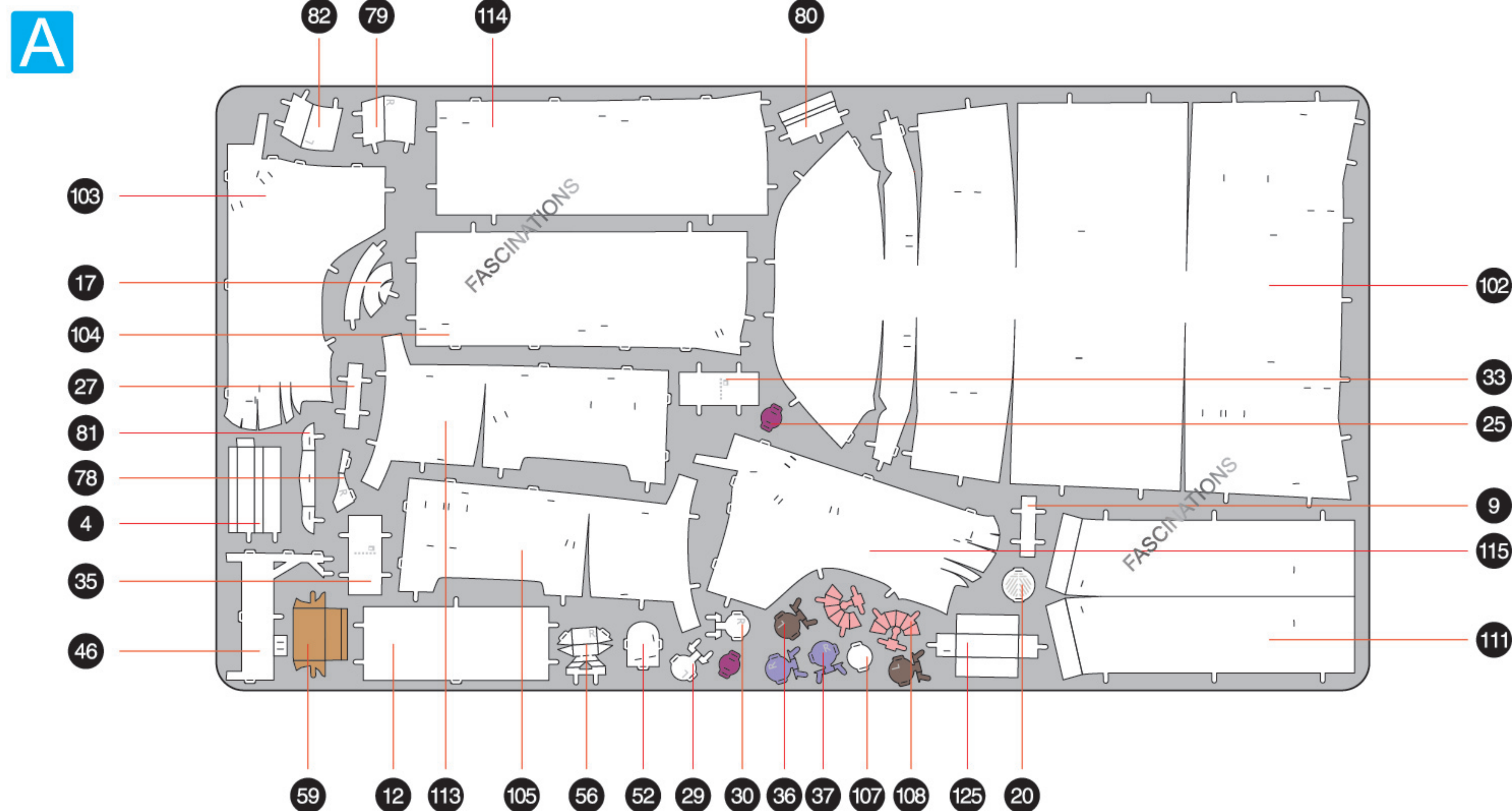


- Tweezers or needle nose pliers: helpful for folding parts, bending and twisting tabs.



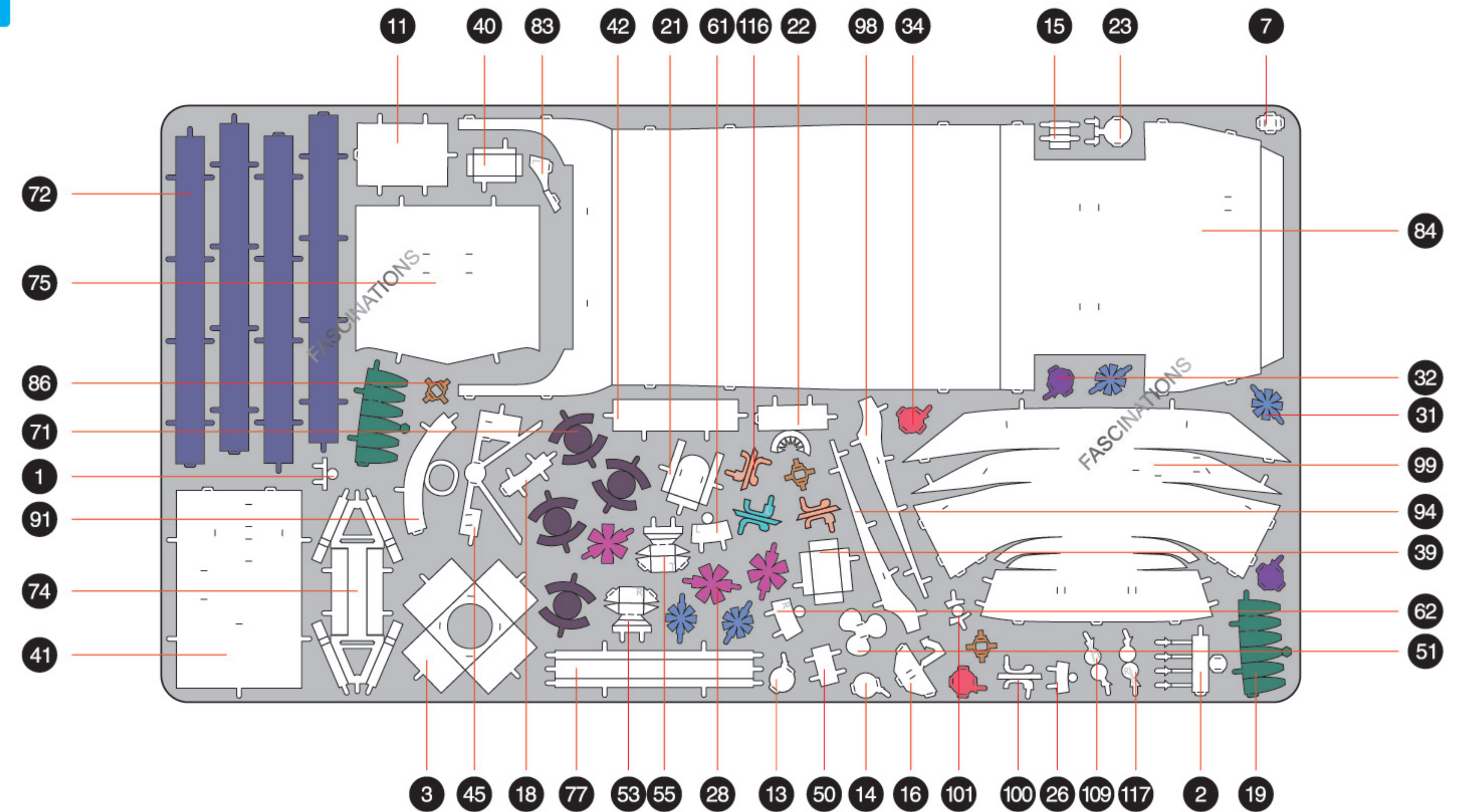
METAL SHEETS

Parts with same color are duplicates

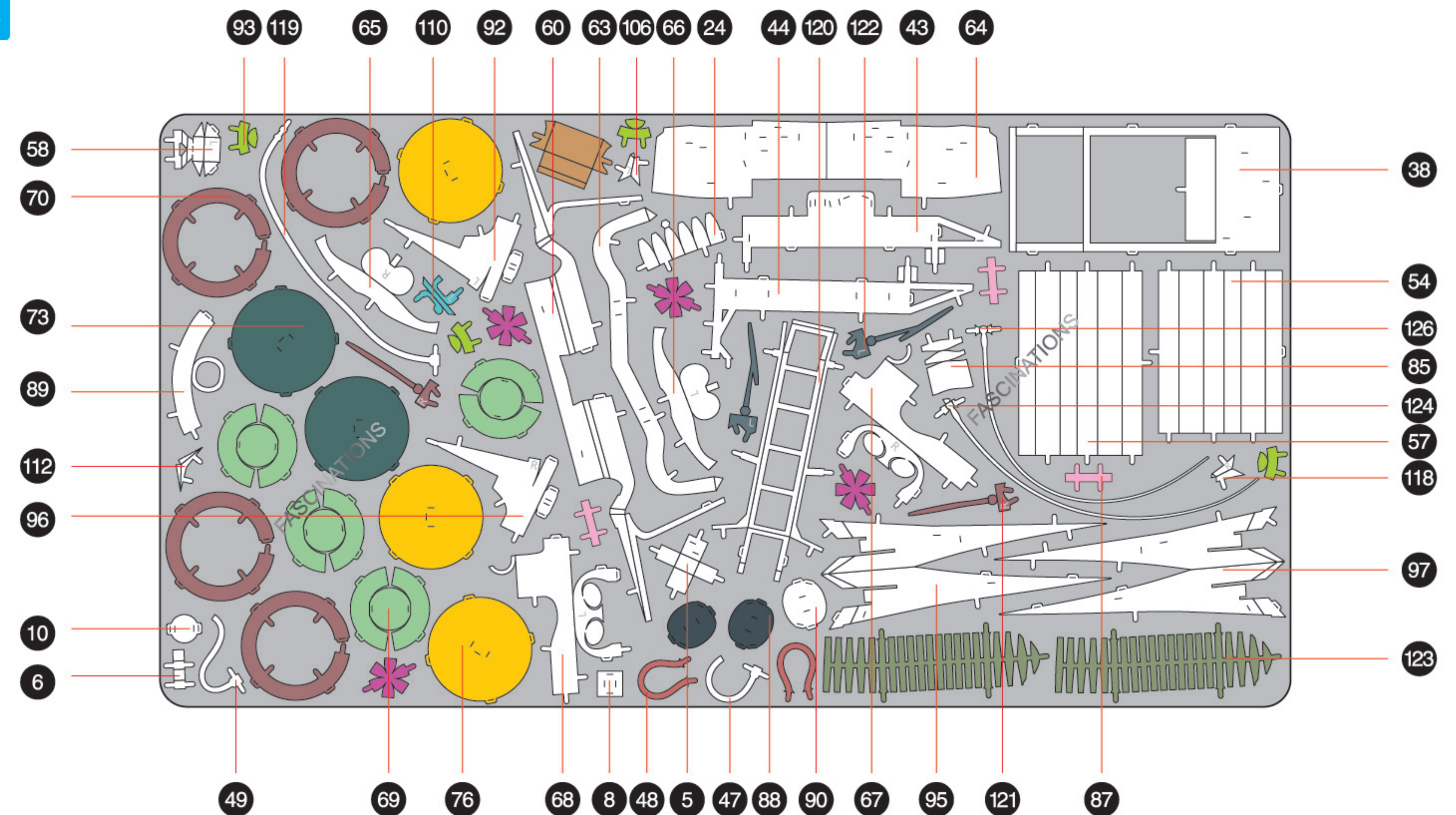


In order to avoid possible injury from sharp edges, please carefully discard the metal sheets after parts have been removed.

B

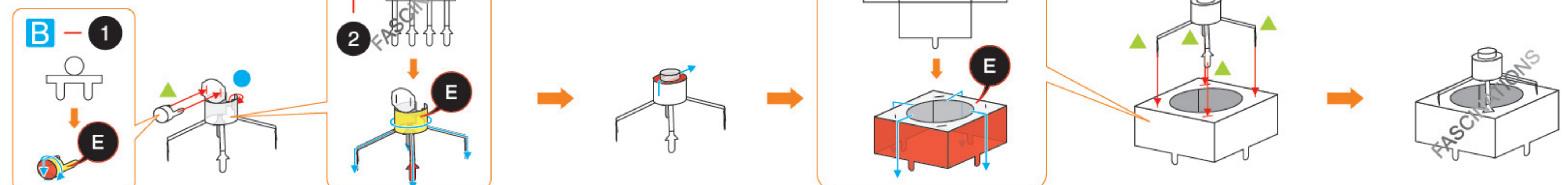


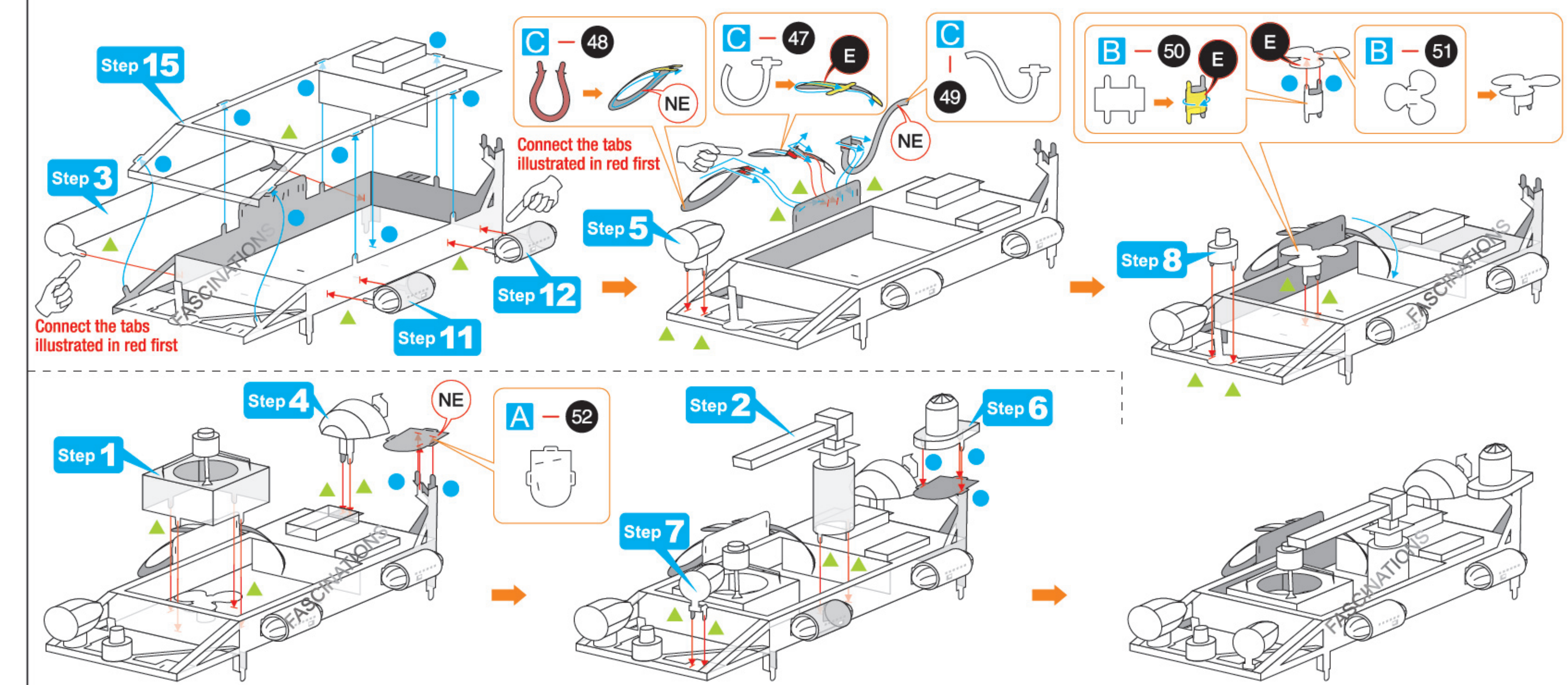
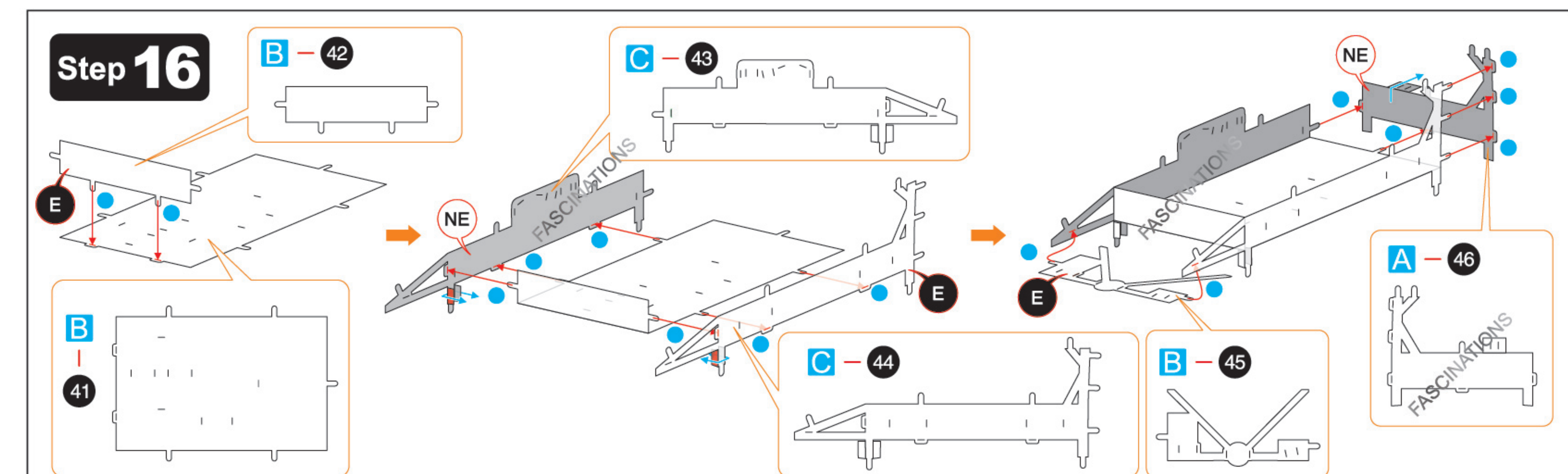
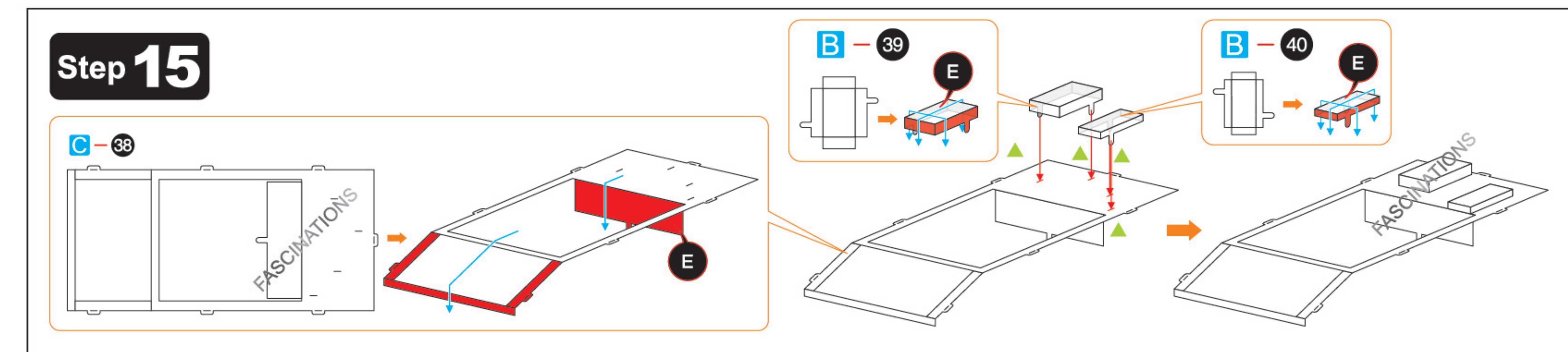
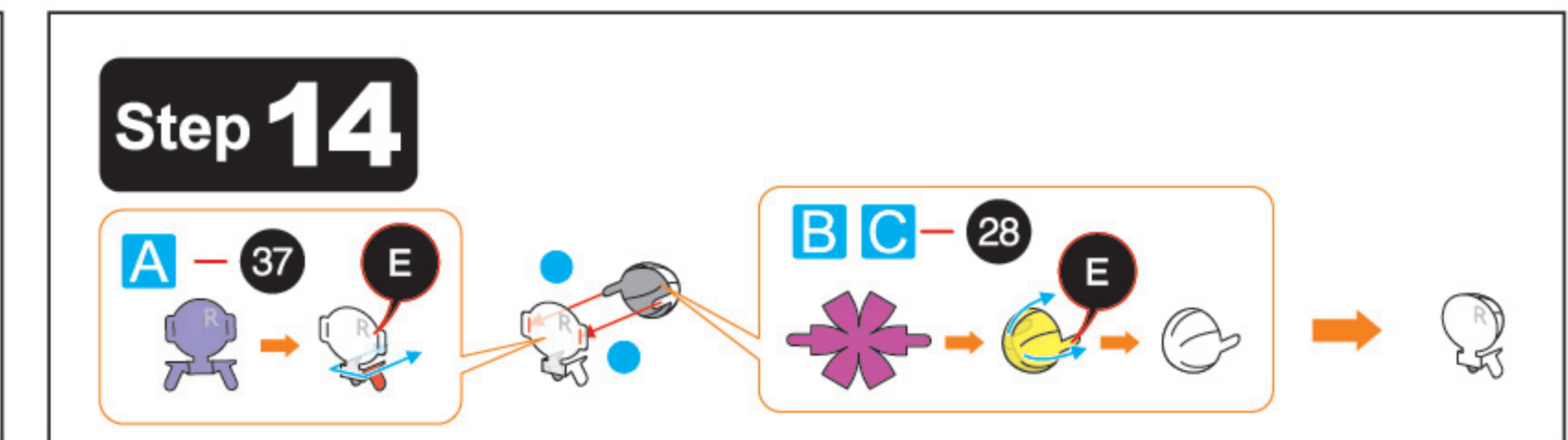
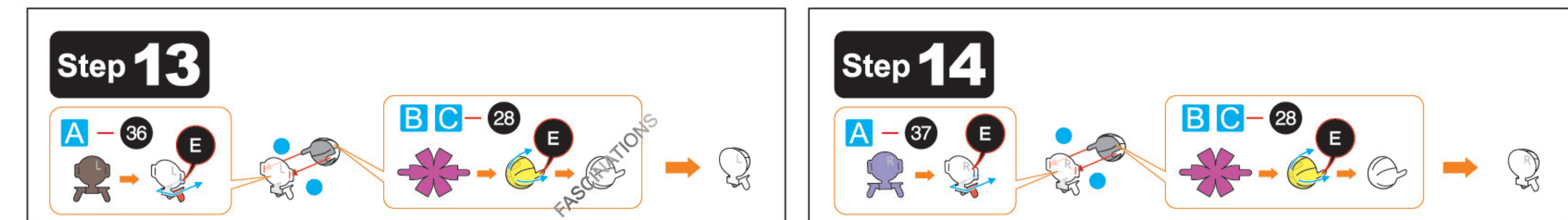
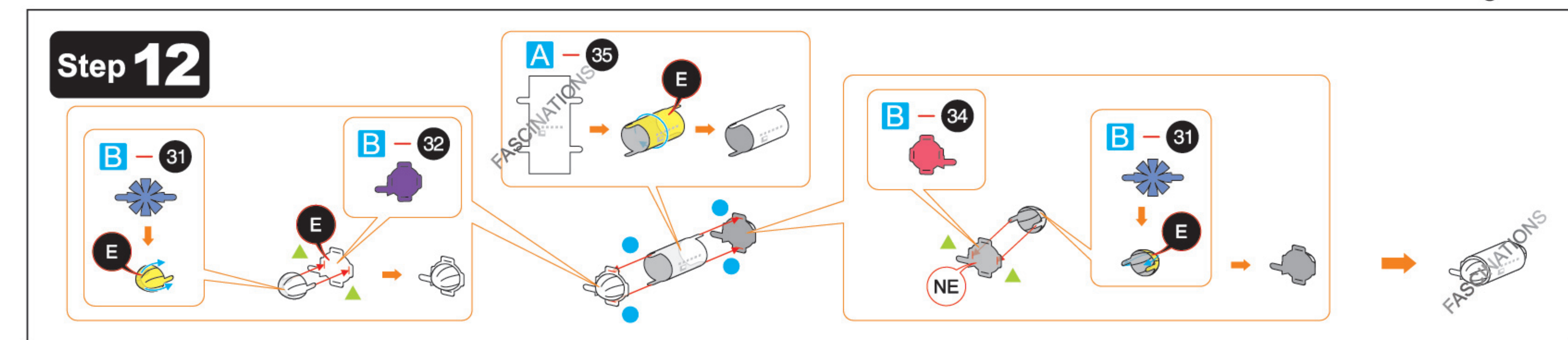
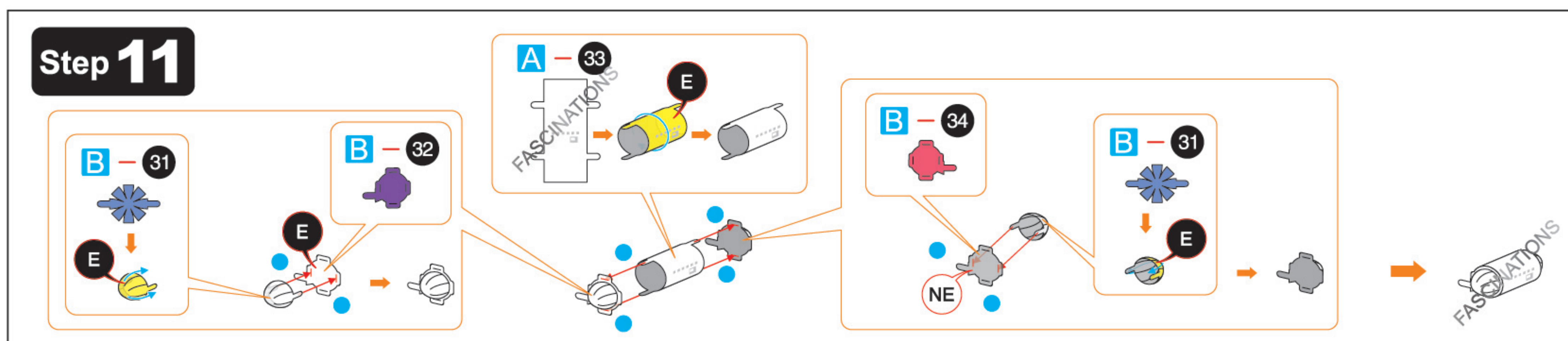
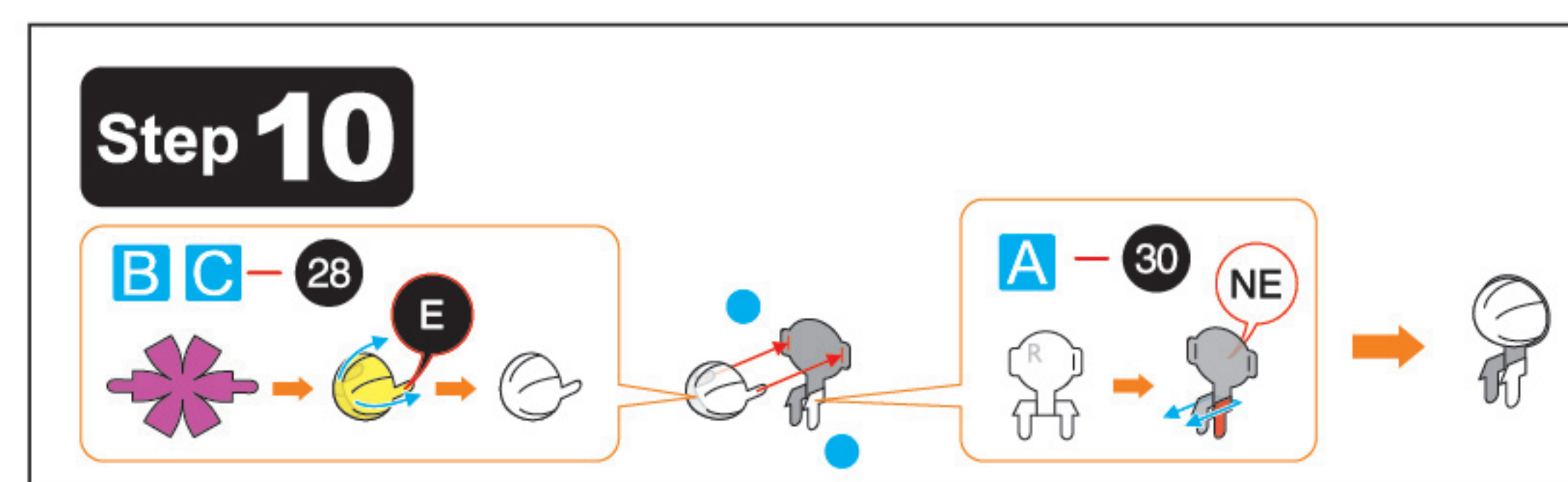
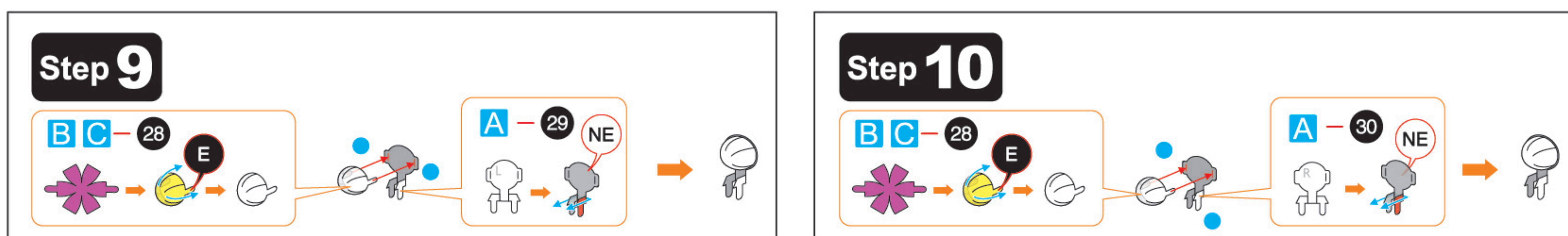
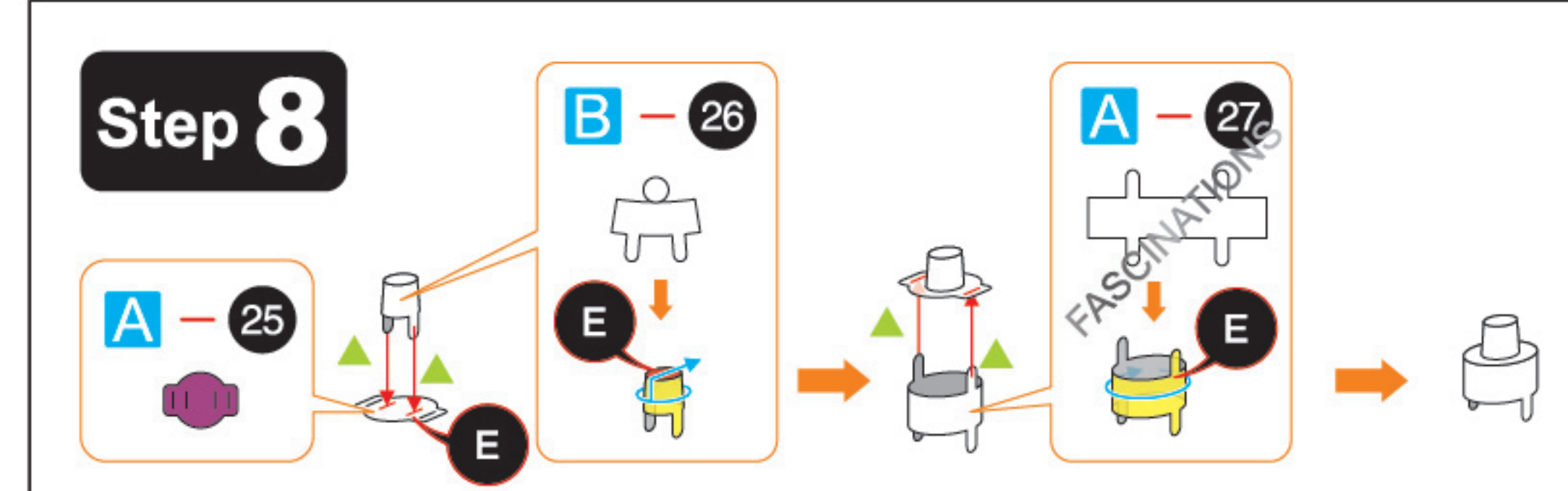
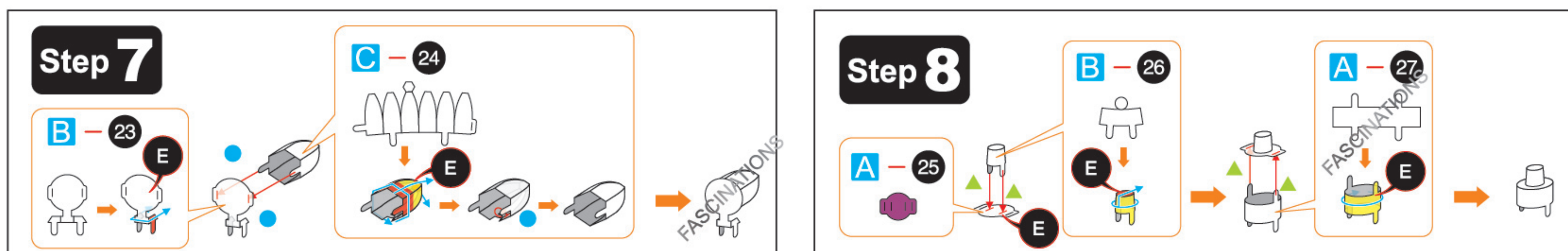
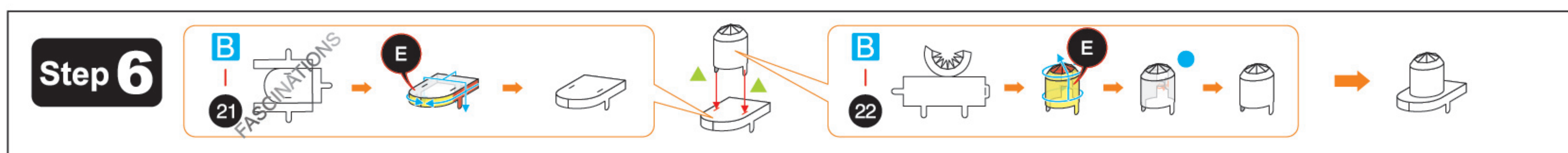
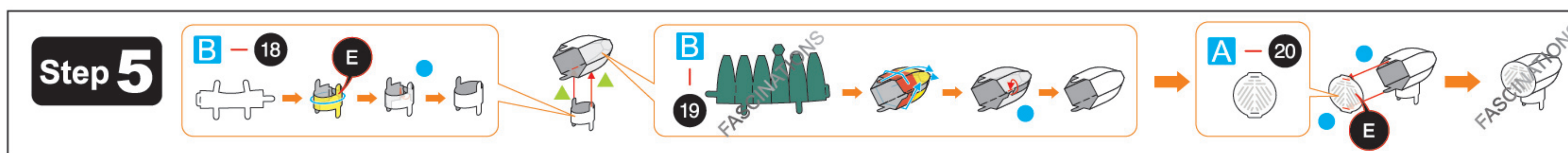
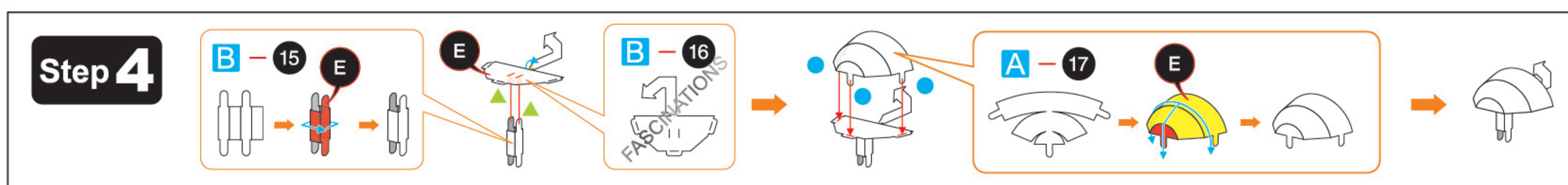
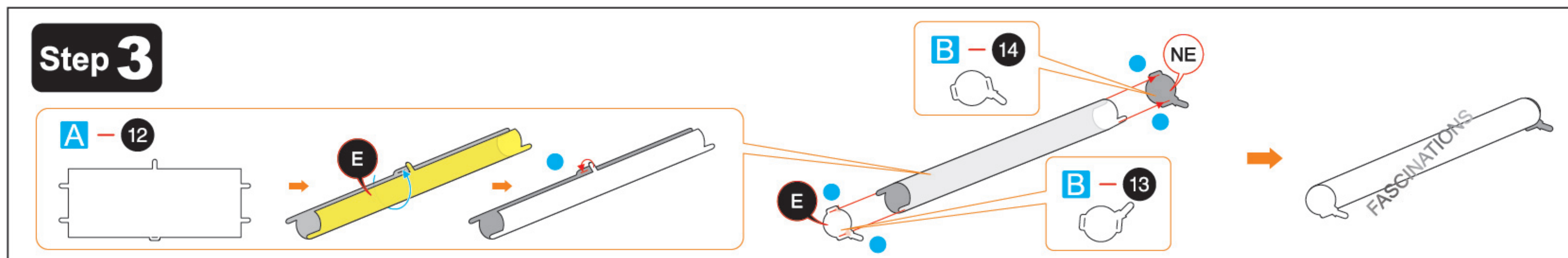
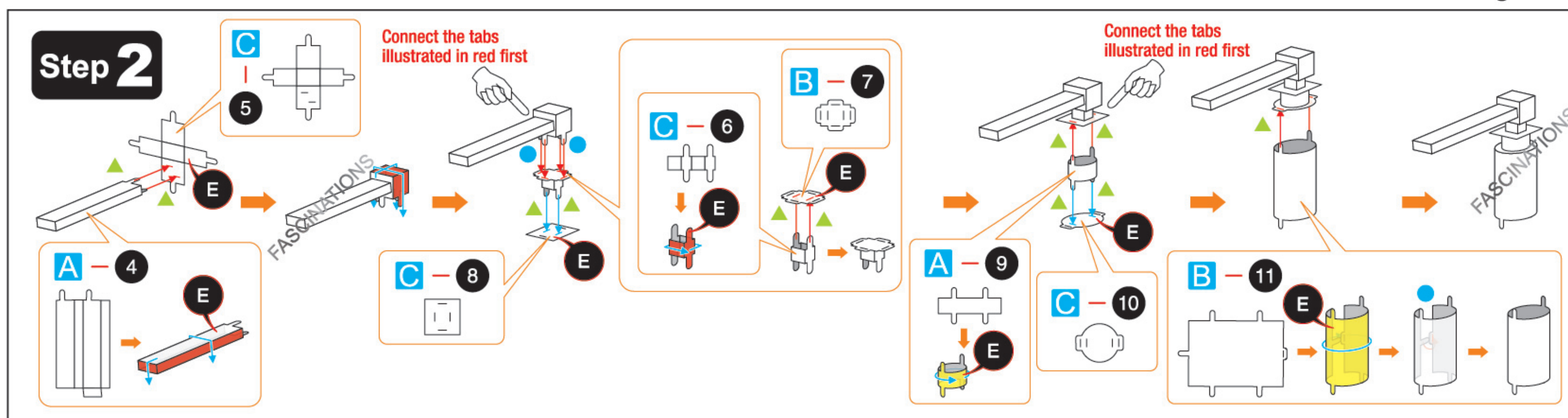
C



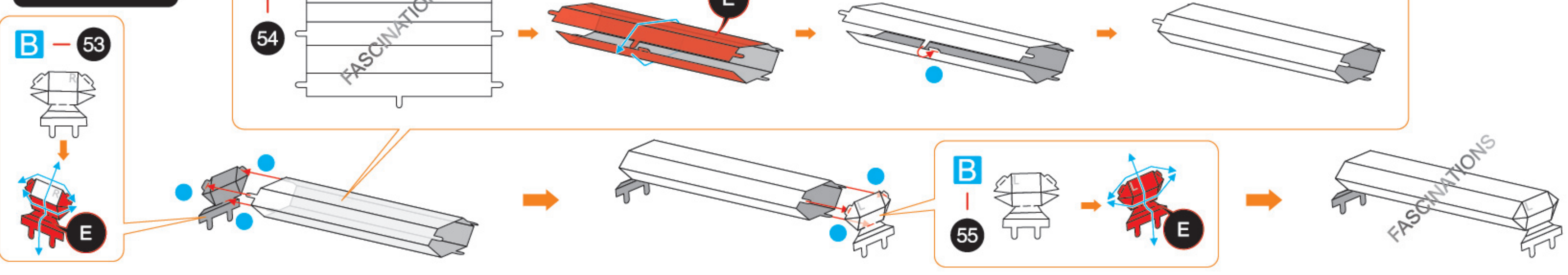
ASSEMBLY STEPS

Step 1

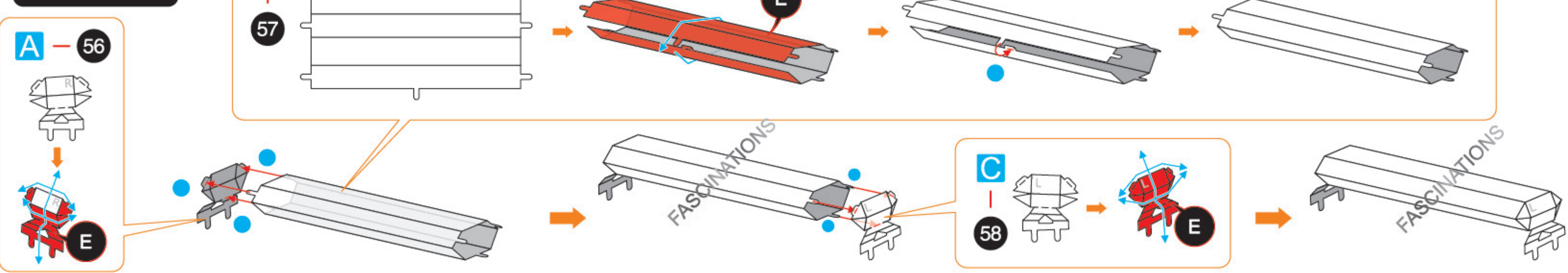




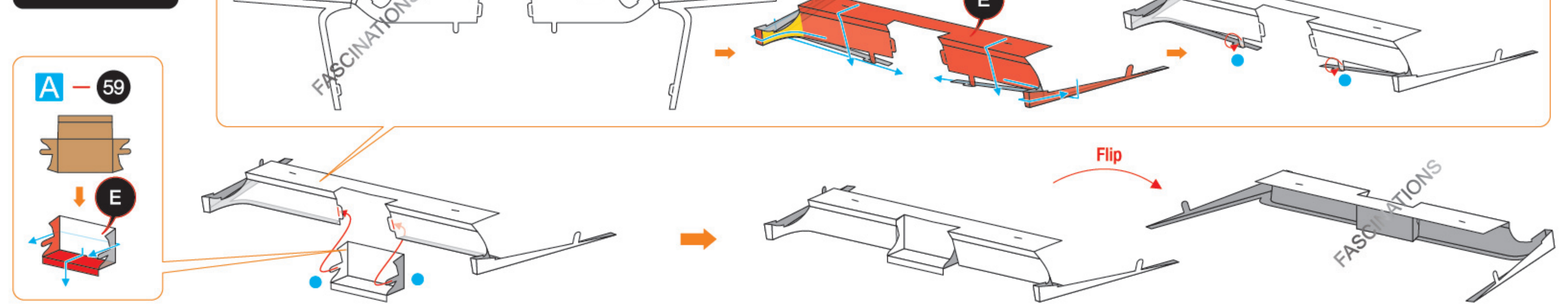
Step 17



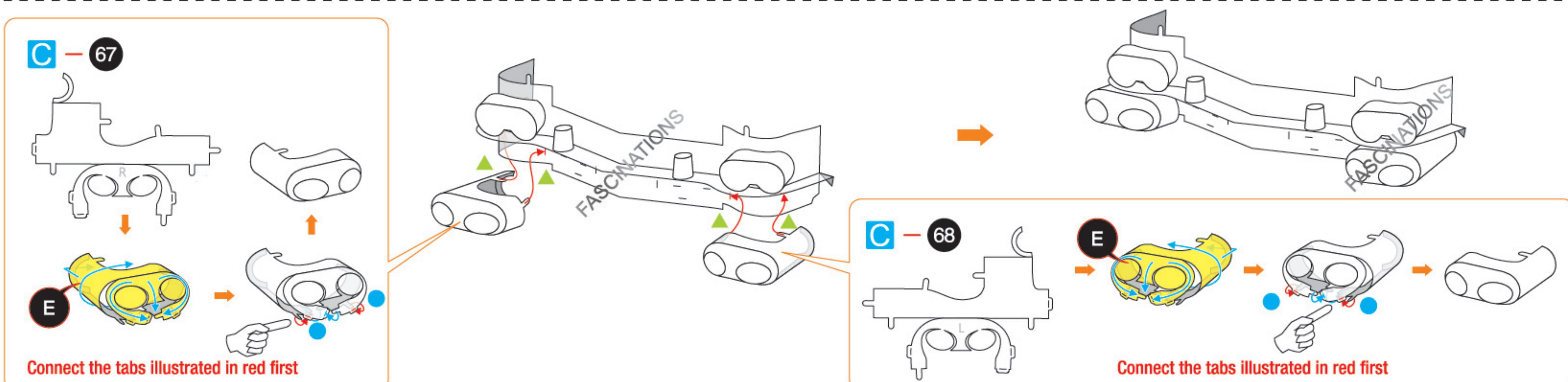
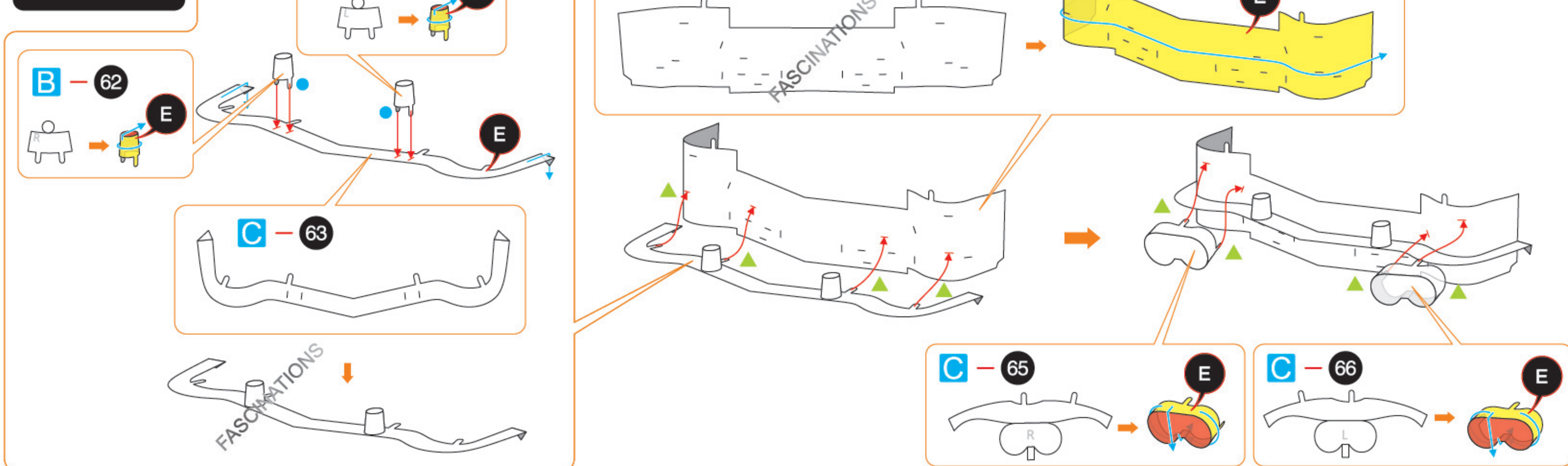
Step 18



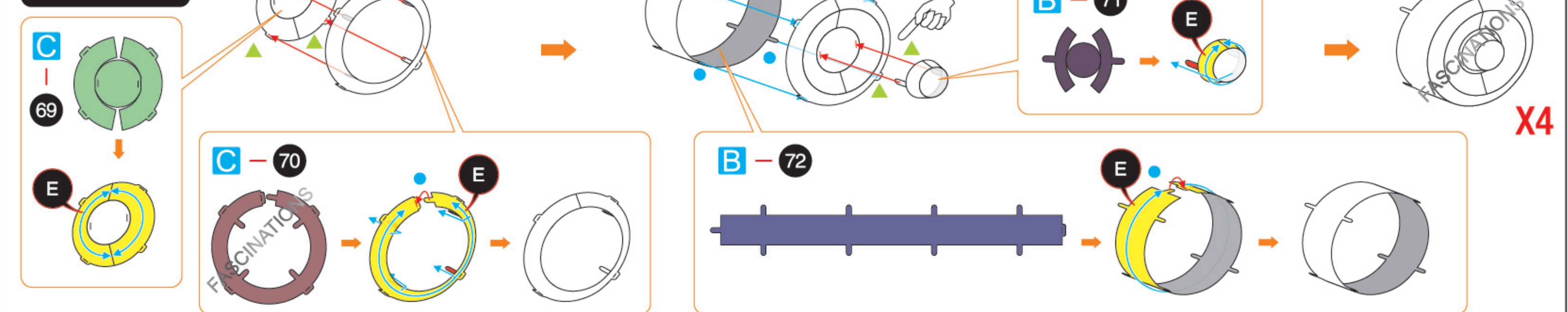
Step 19



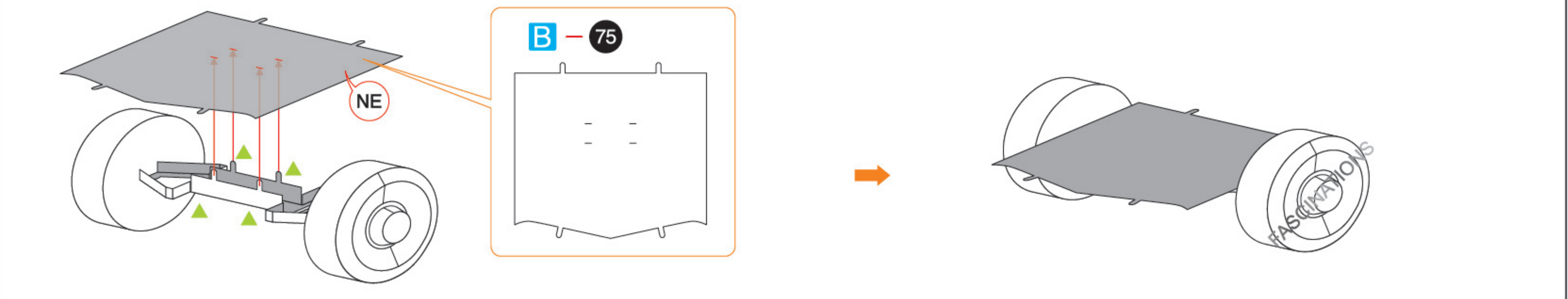
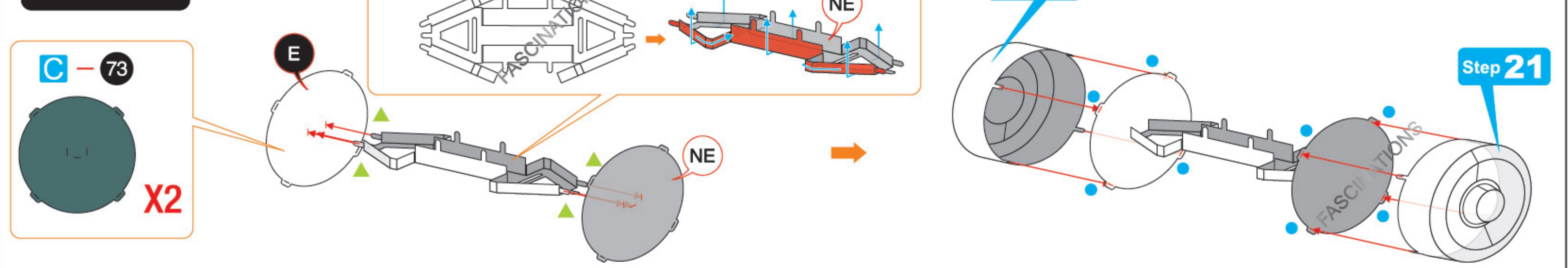
Step 20



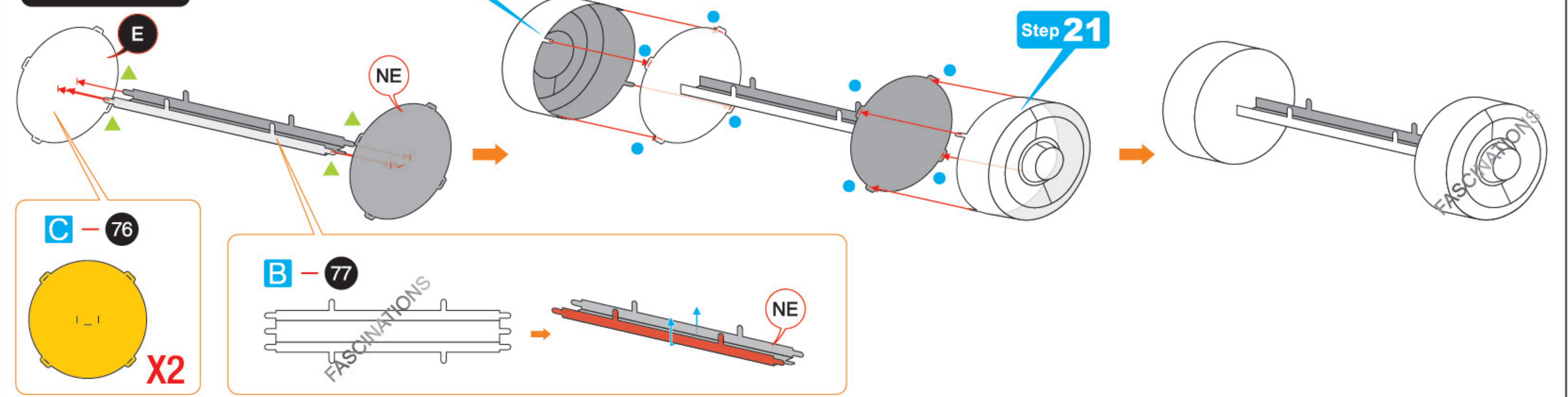
Step 21



Step 22



Step 23



Step 24

