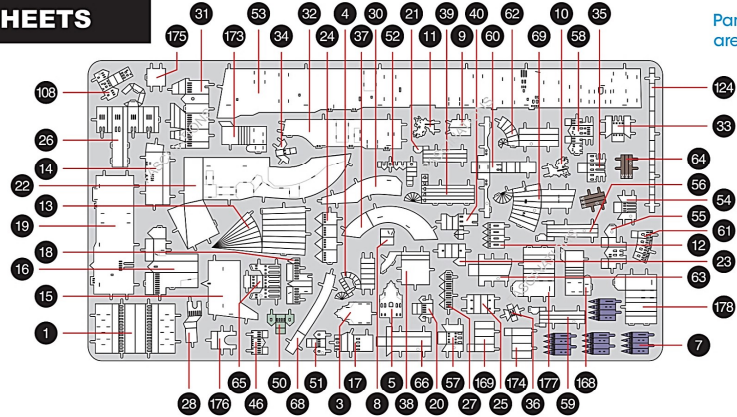
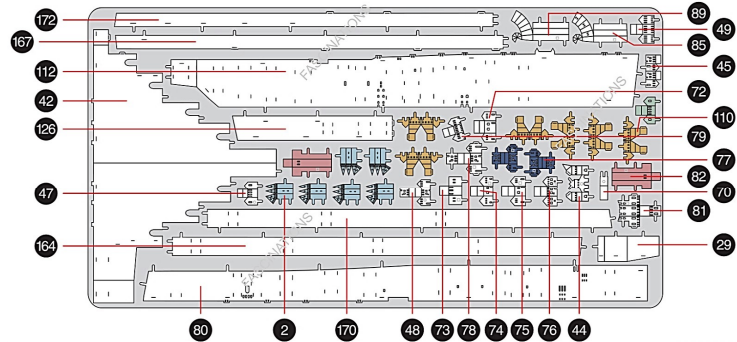


## METAL SHEETS

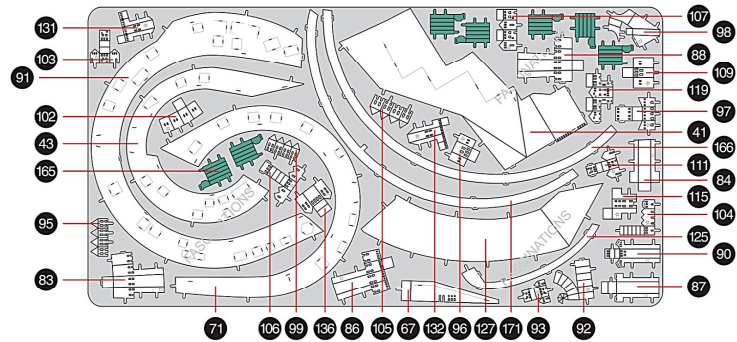
**A**



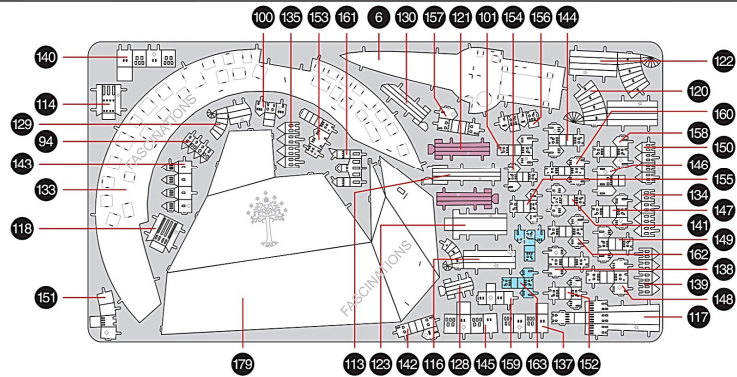
**B**



**C**



**D**



# Metal Earth

360° view

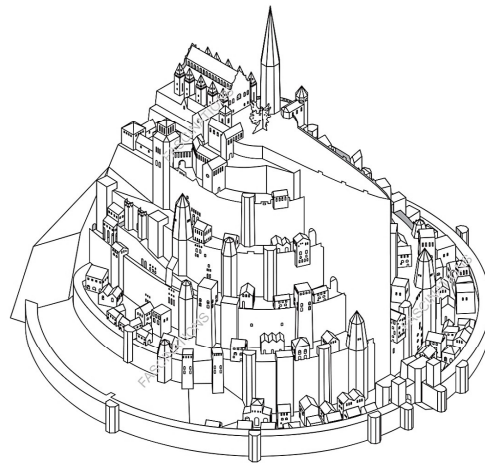
Premium Series



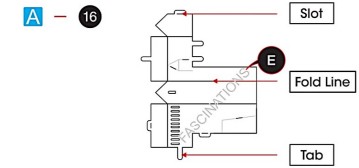
It is highly recommended that you visit [www.metalearth.com/360/ICX239](http://www.metalearth.com/360/ICX239) to see the completed model before assembling your own

**NEW LINE CINEMA**  
A WARNER-MEDIA Company  
© New Line Productions, Inc. All rights reserved. THE LORD OF THE RINGS, THE FELLOWSHIP OF THE RINGS, THE LORD OF THE RINGS: THE TWO TOWERS, THE LORD OF THE RINGS: THE RETURN OF THE KING and the names of the characters, items, events and places therein are ™ of The Saul Zaentz Company d/b/a Middle-earth Enterprises under license to New Line Productions, Inc. 1022

## ICX239 MINAS TIRITH™



## TO CREATE THE BEST CONNECTIONS



### Legends:

- Engraved/ Color side
- Non - engraved/ Silver side
- Attention point
- Insert tab and bend 90 degrees
- Insert tab and twist 90 degrees

### Recommended tools:

- Wire cutters: helpful for taking parts from the metal sheets.



- Tweezers or needle nose pliers: helpful for folding parts, bending and twisting tabs.



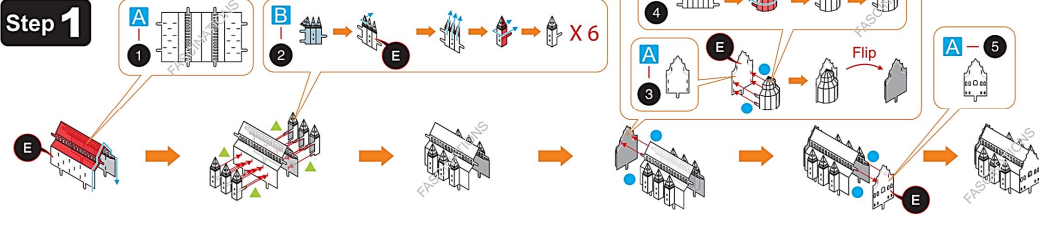
### Assembly tip:

If needed, slightly twist tabs to hold parts together then untwist and bend them down for a nice finish.

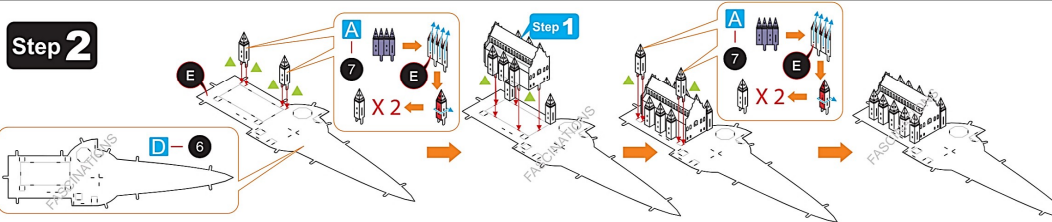
- Yellow areas should be curled
- Red areas should be folded

## ASSEMBLY STEPS

**Step 1**

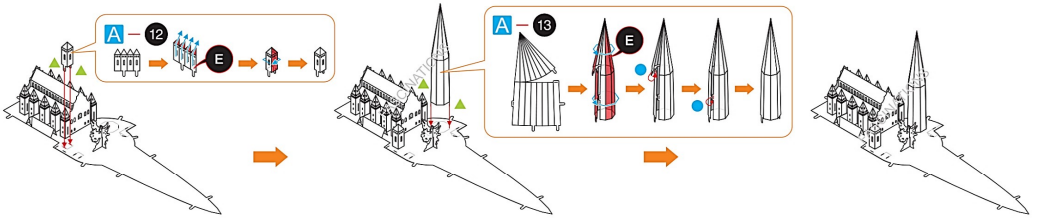


**Step 2**

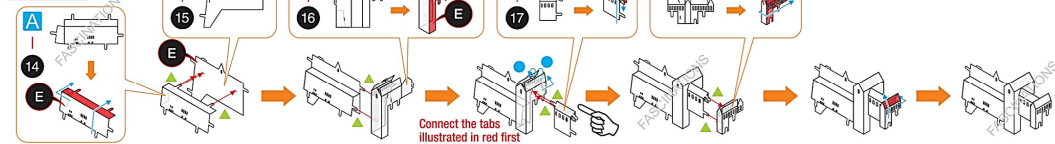


In order to avoid possible injury from sharp edges, please carefully discard the metal sheets after parts have been removed

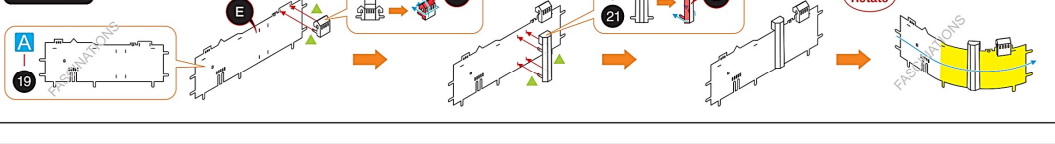
Step 3



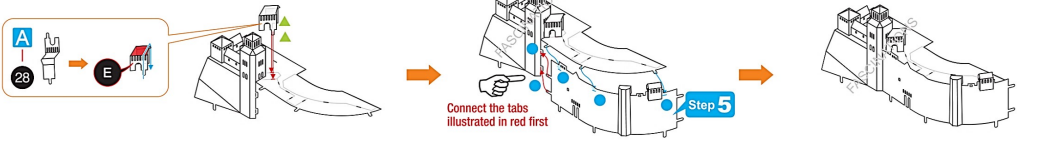
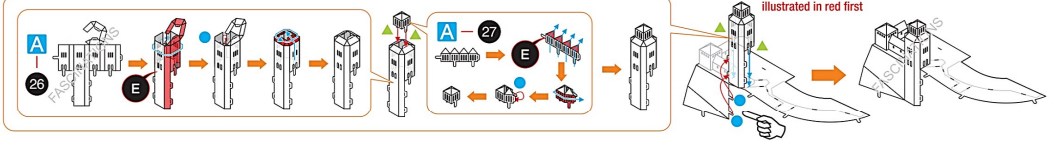
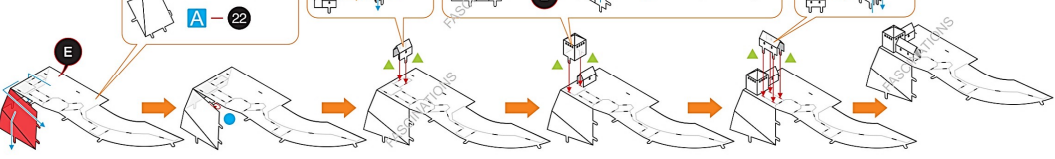
Step 4



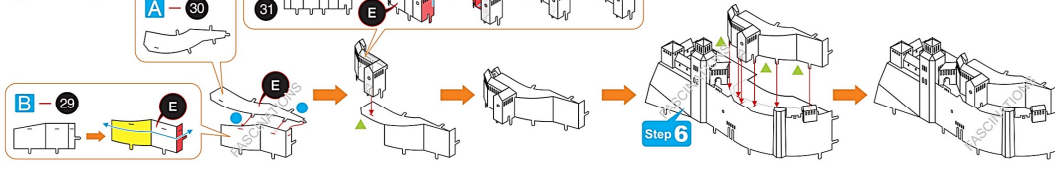
Step 5



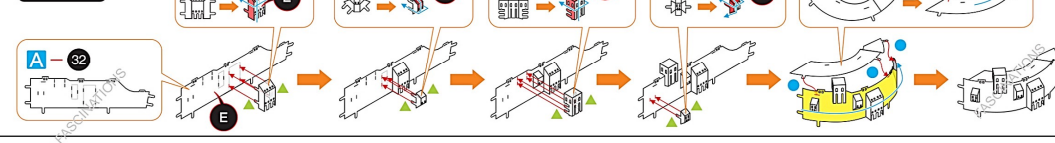
Step 6



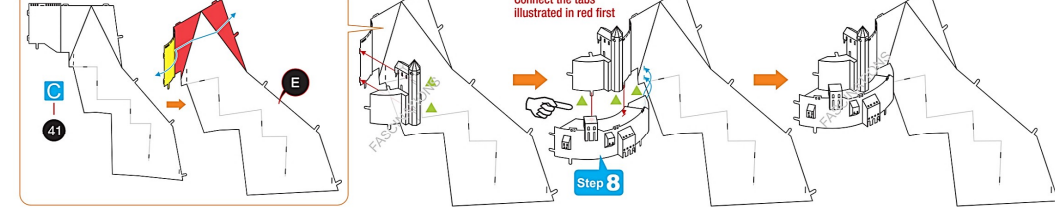
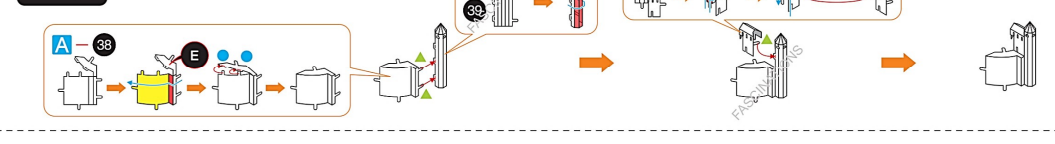
Step 7



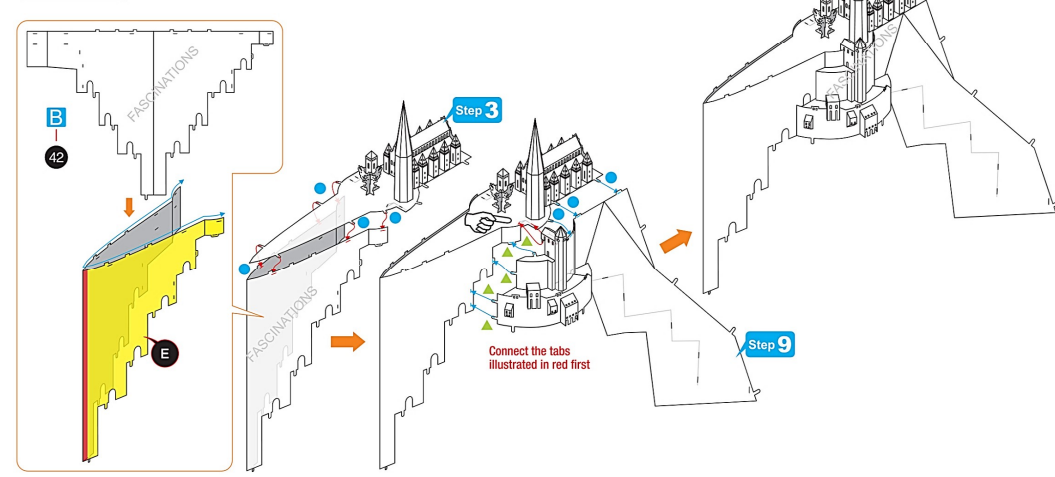
Step 8



Step 9



Step 10





### Step 11

Step 4

Connect the tabs illustrated in red first

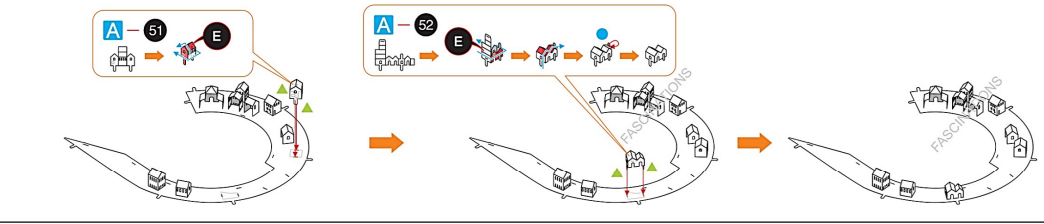
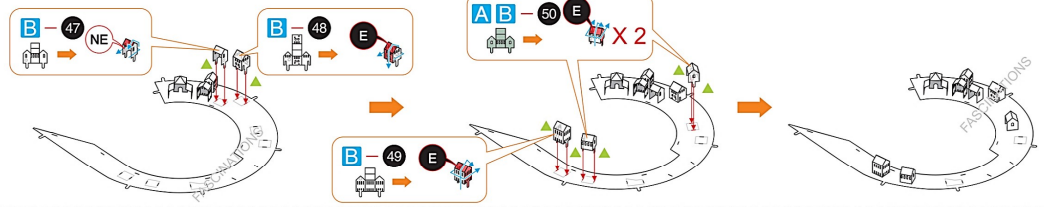
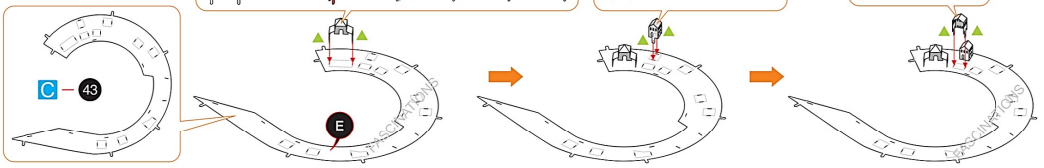
Step 10

Step 7

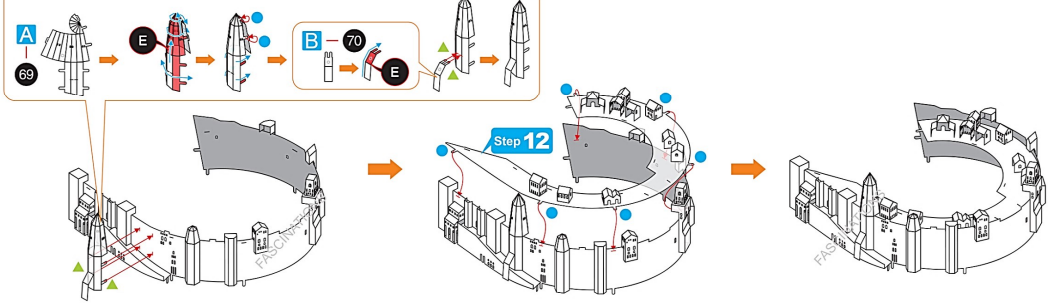
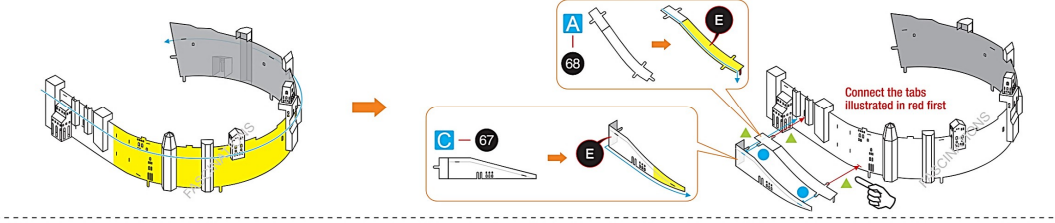
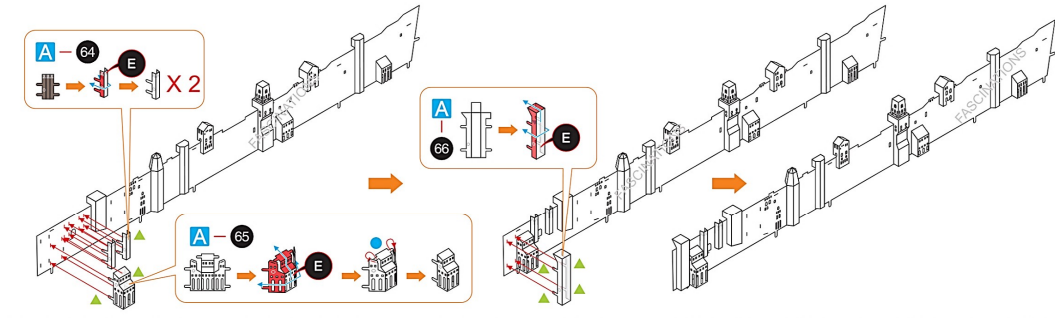
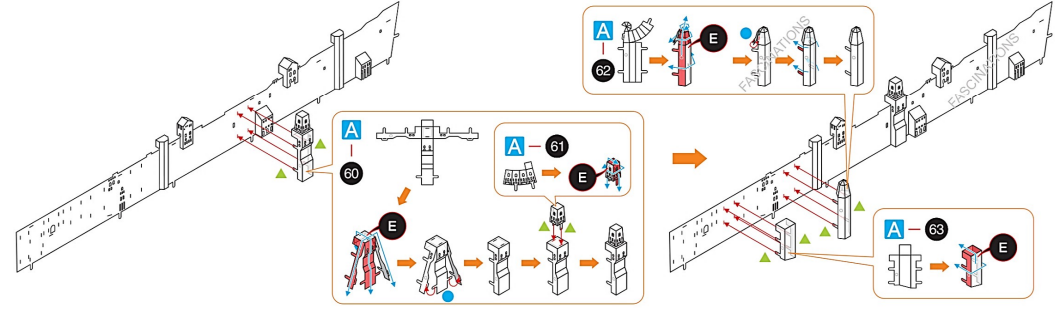
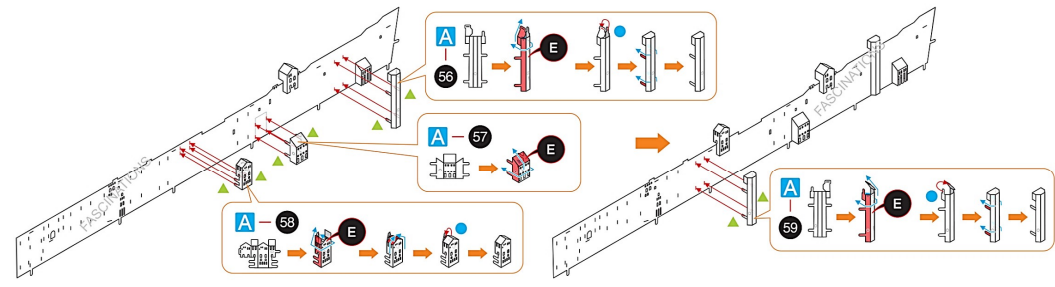
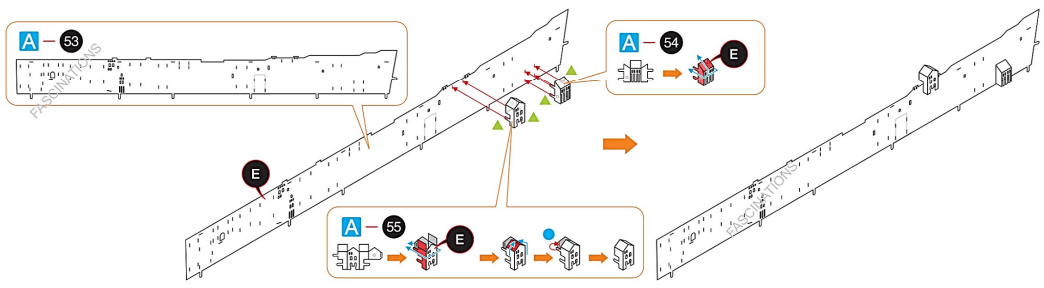
Connect the tabs illustrated in red first

### Step 12

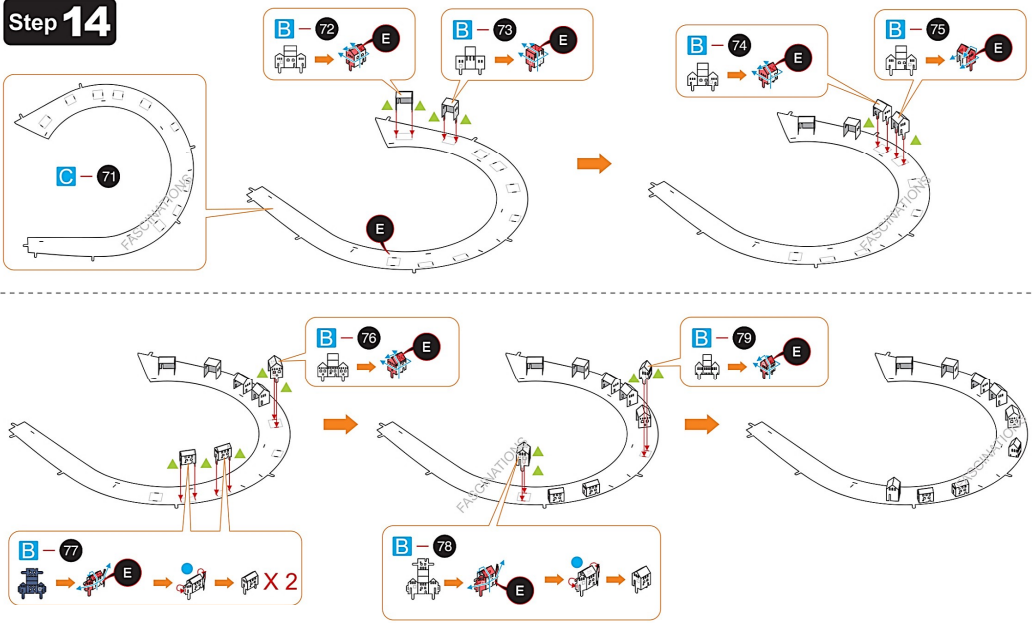
B-44 E → B-45 E → A-46 NE



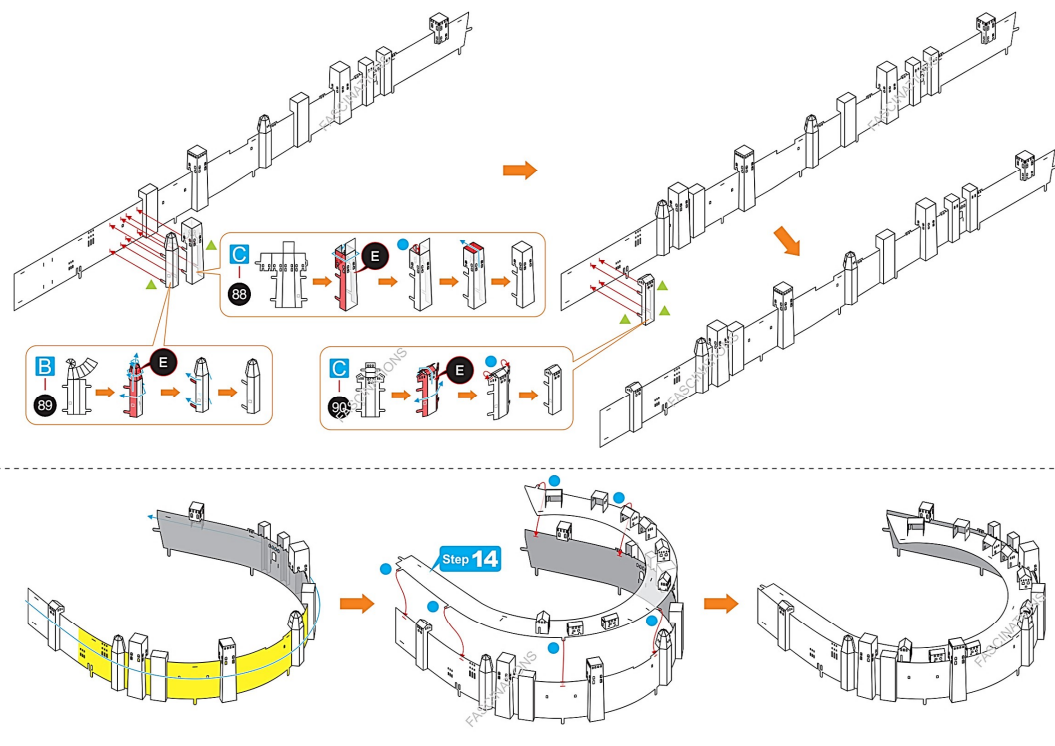
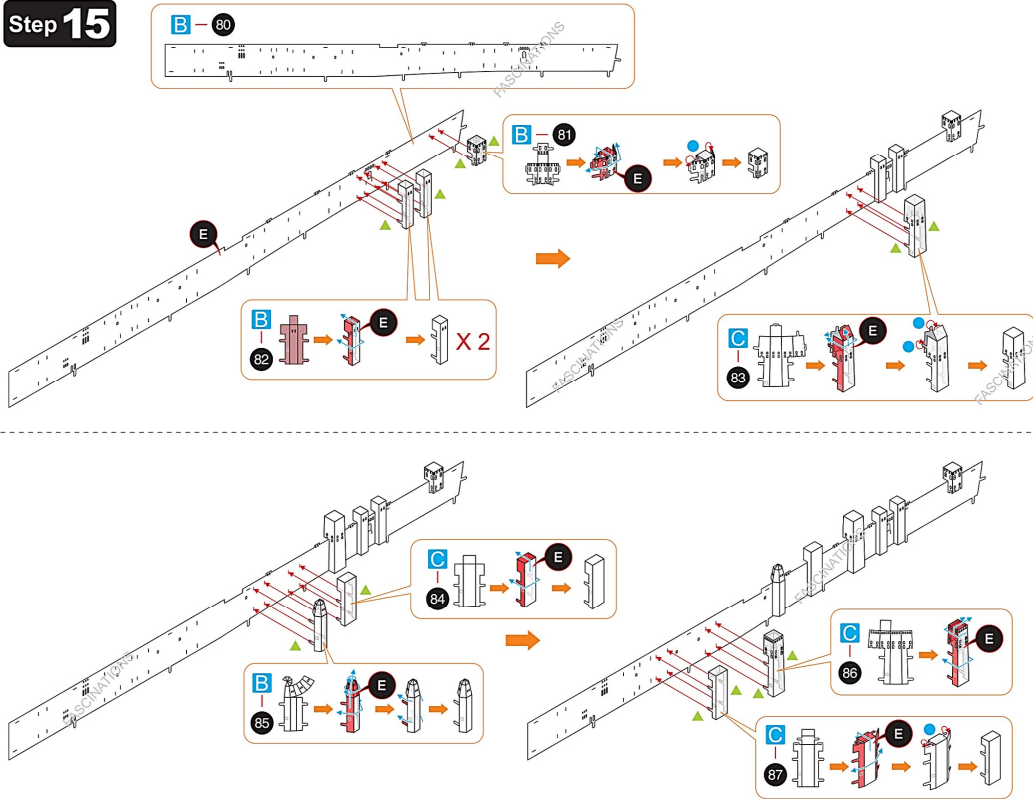
### Step 13



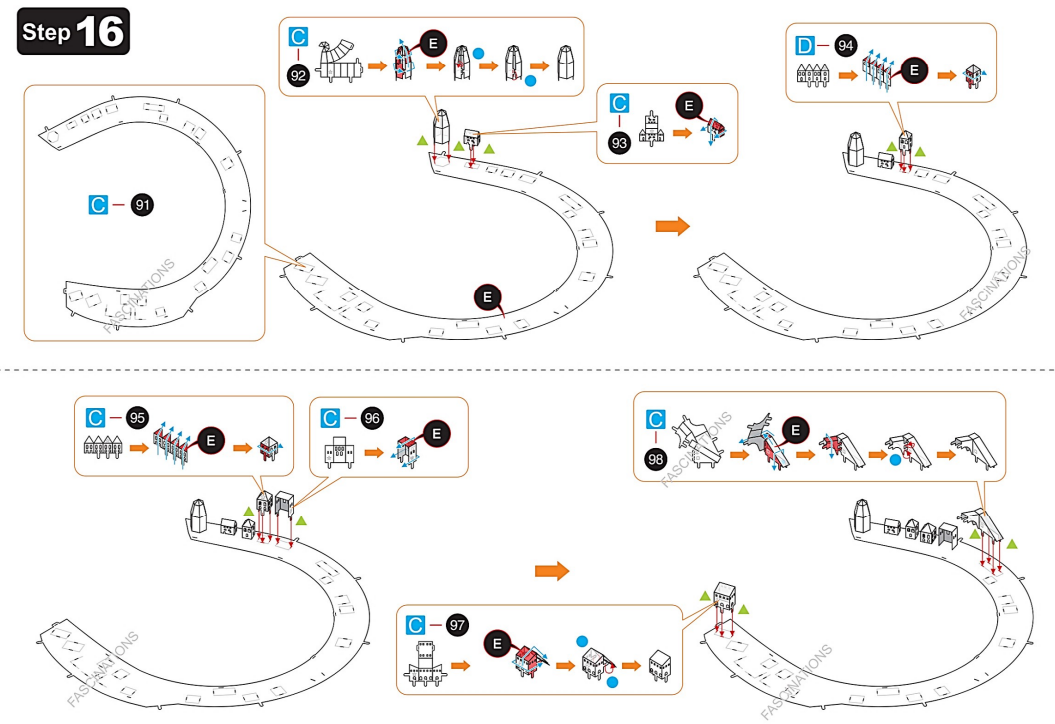
Step 14



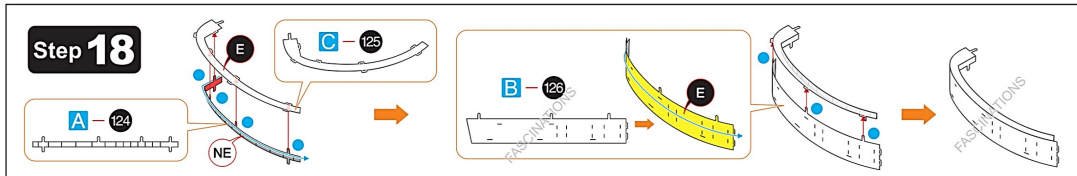
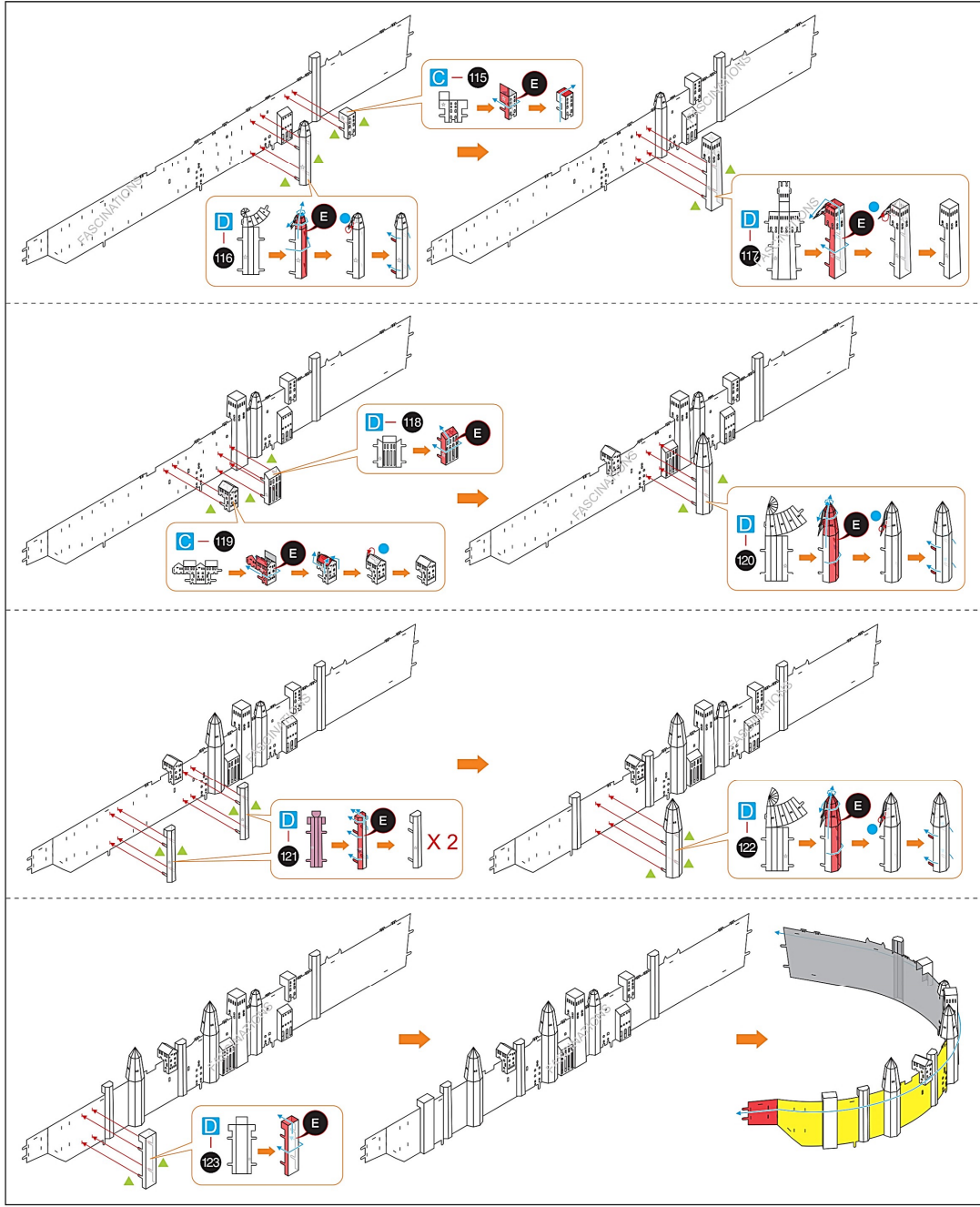
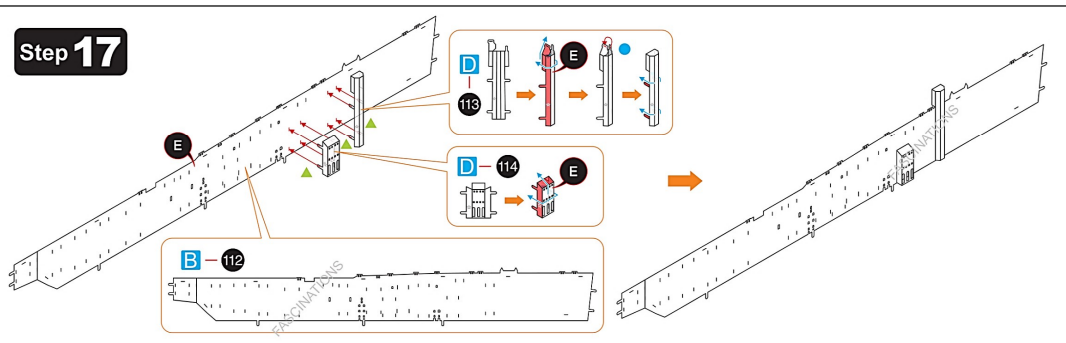
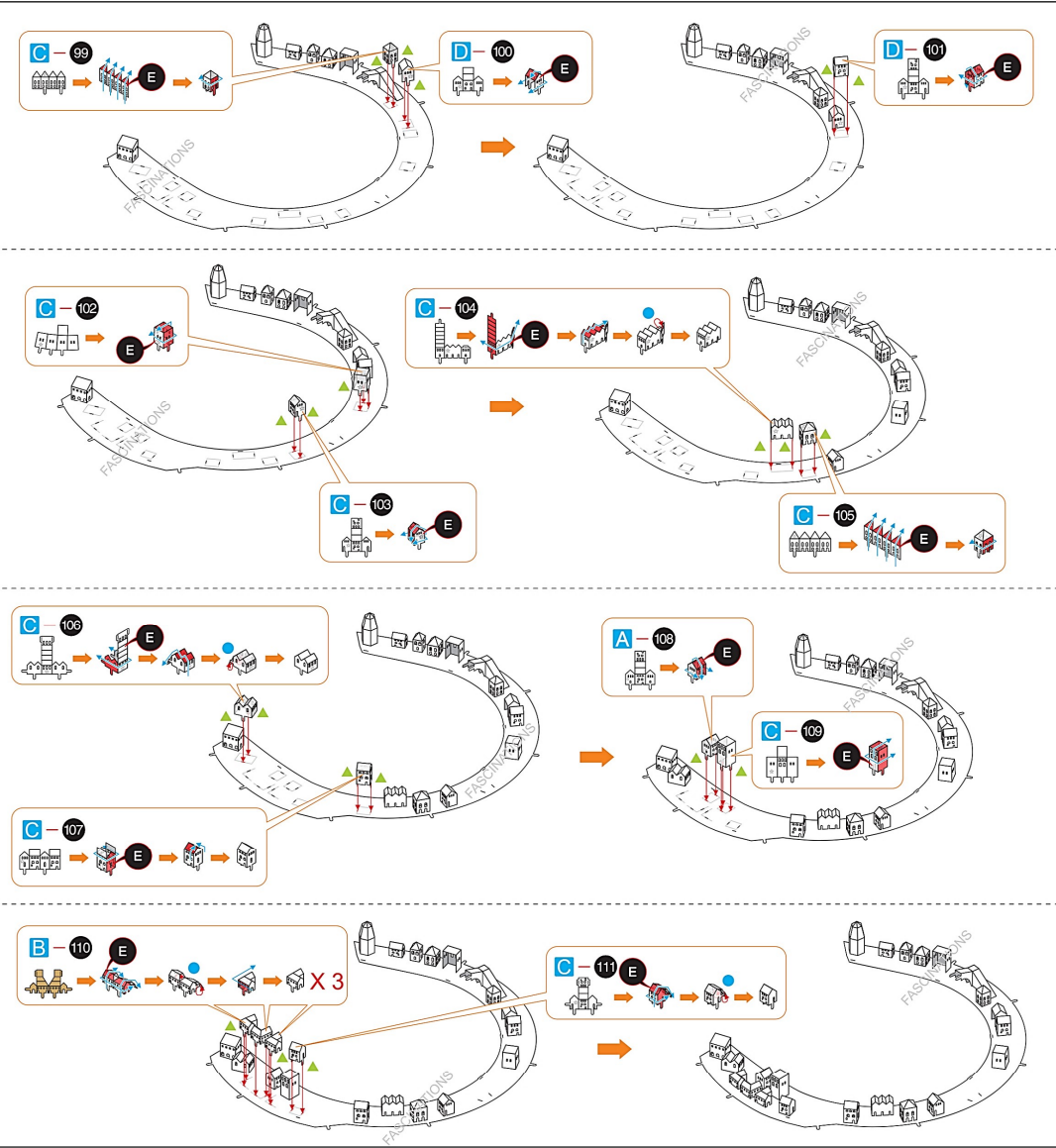
Step 15

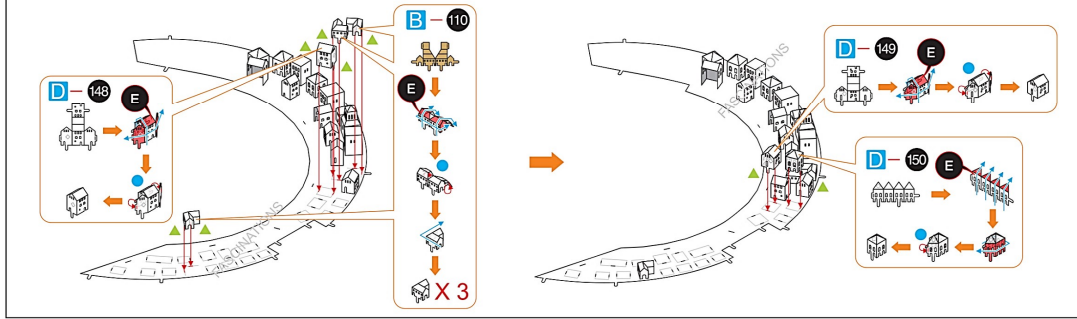
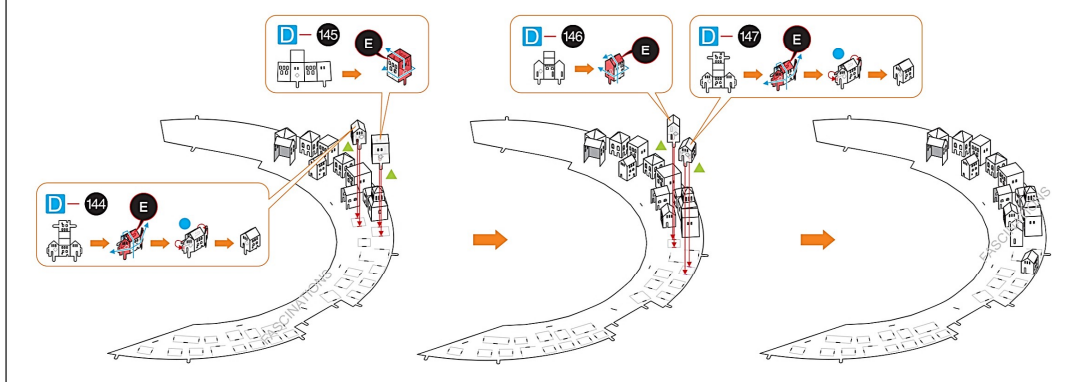
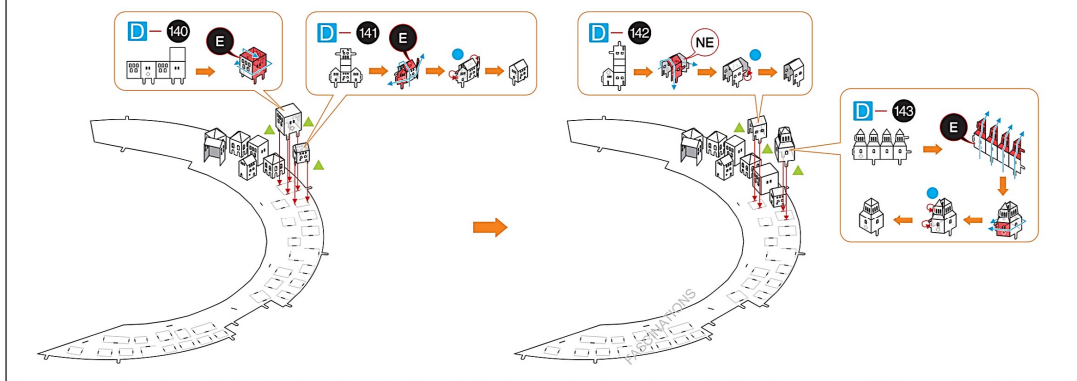
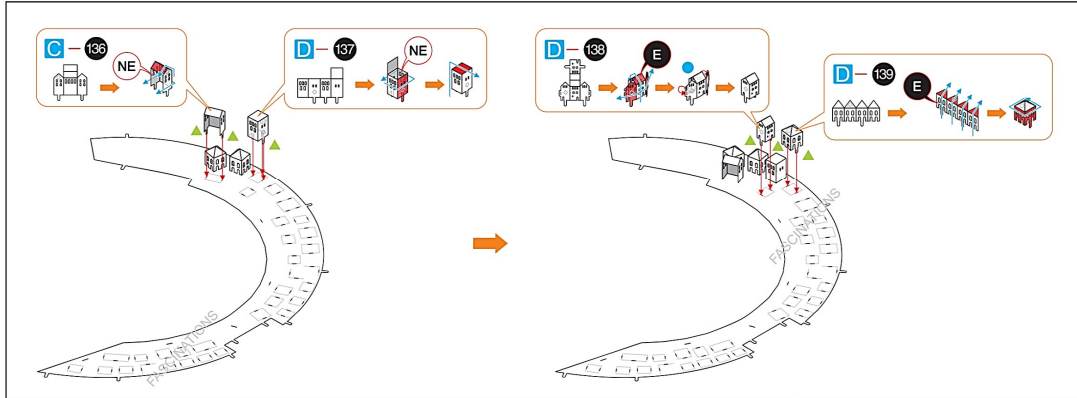
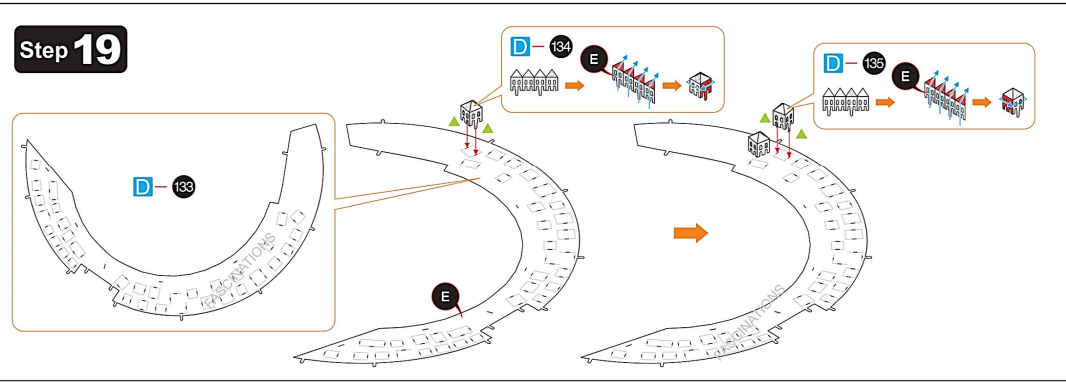
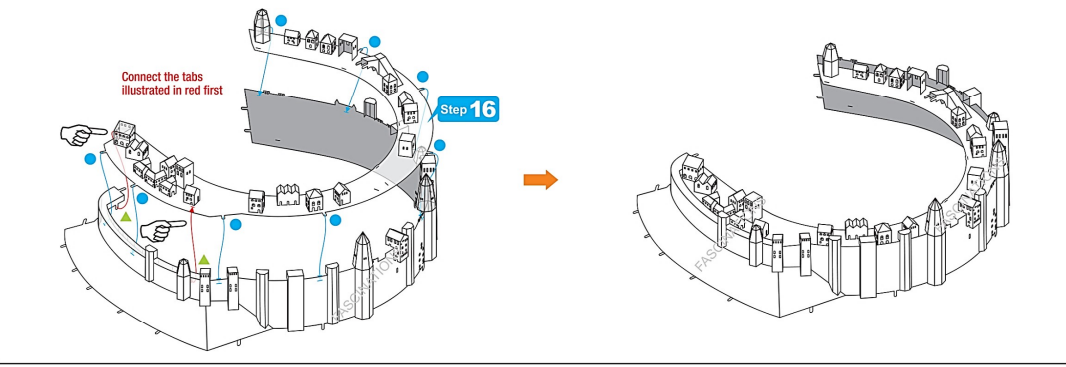
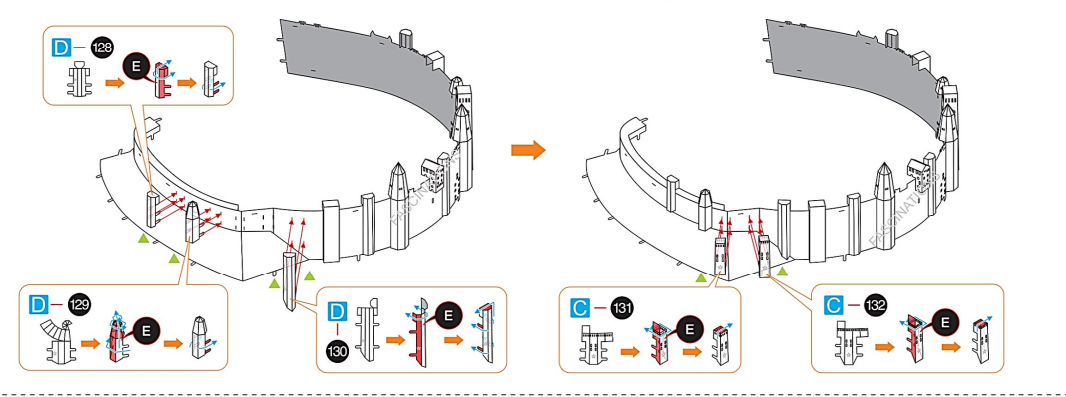
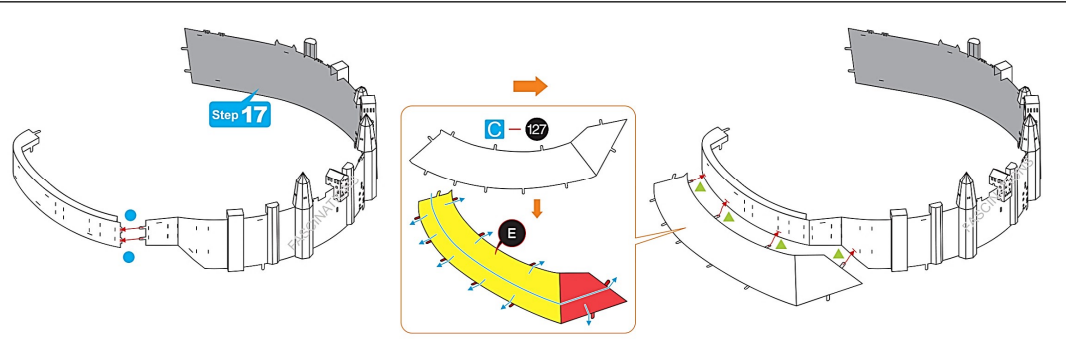


Step 16

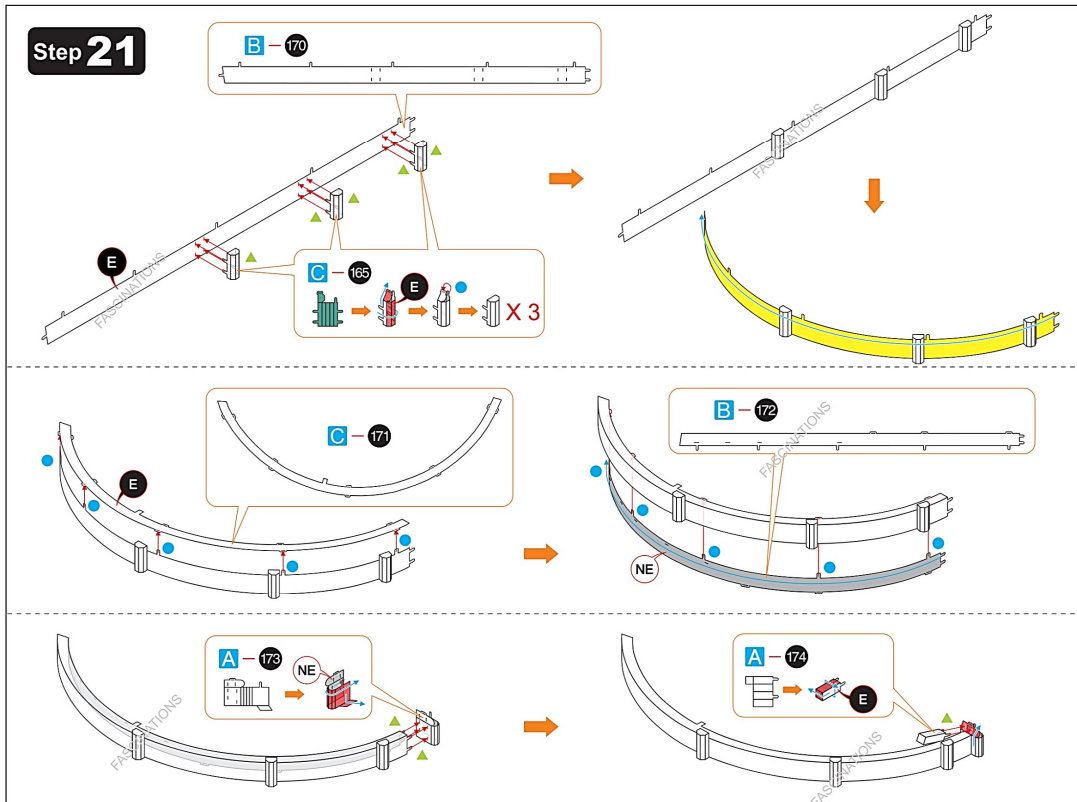
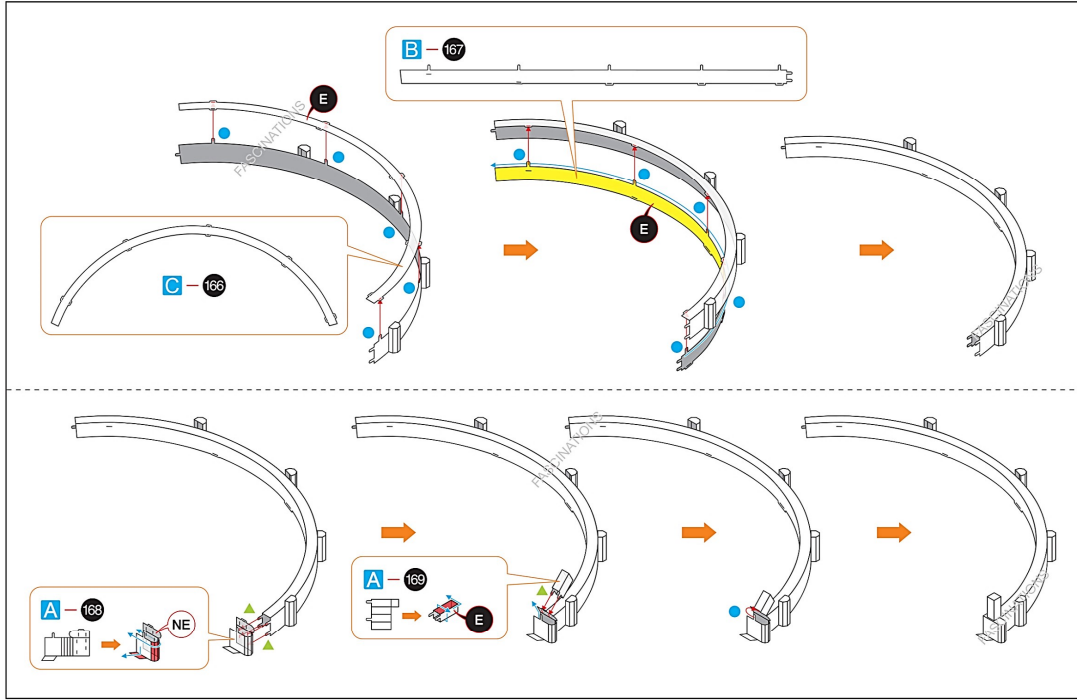
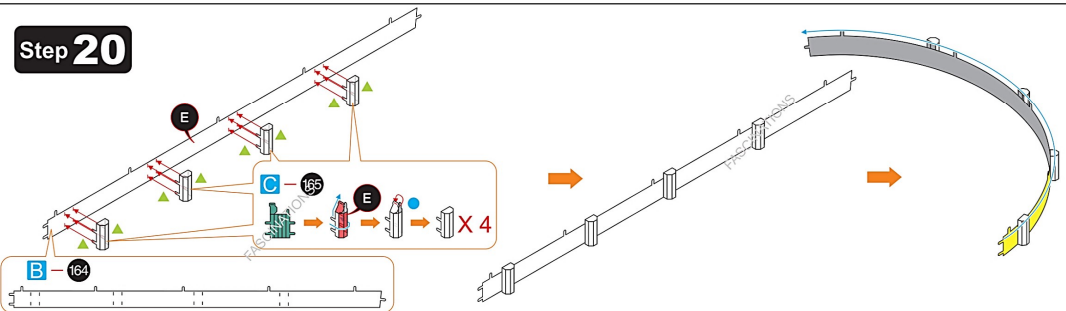
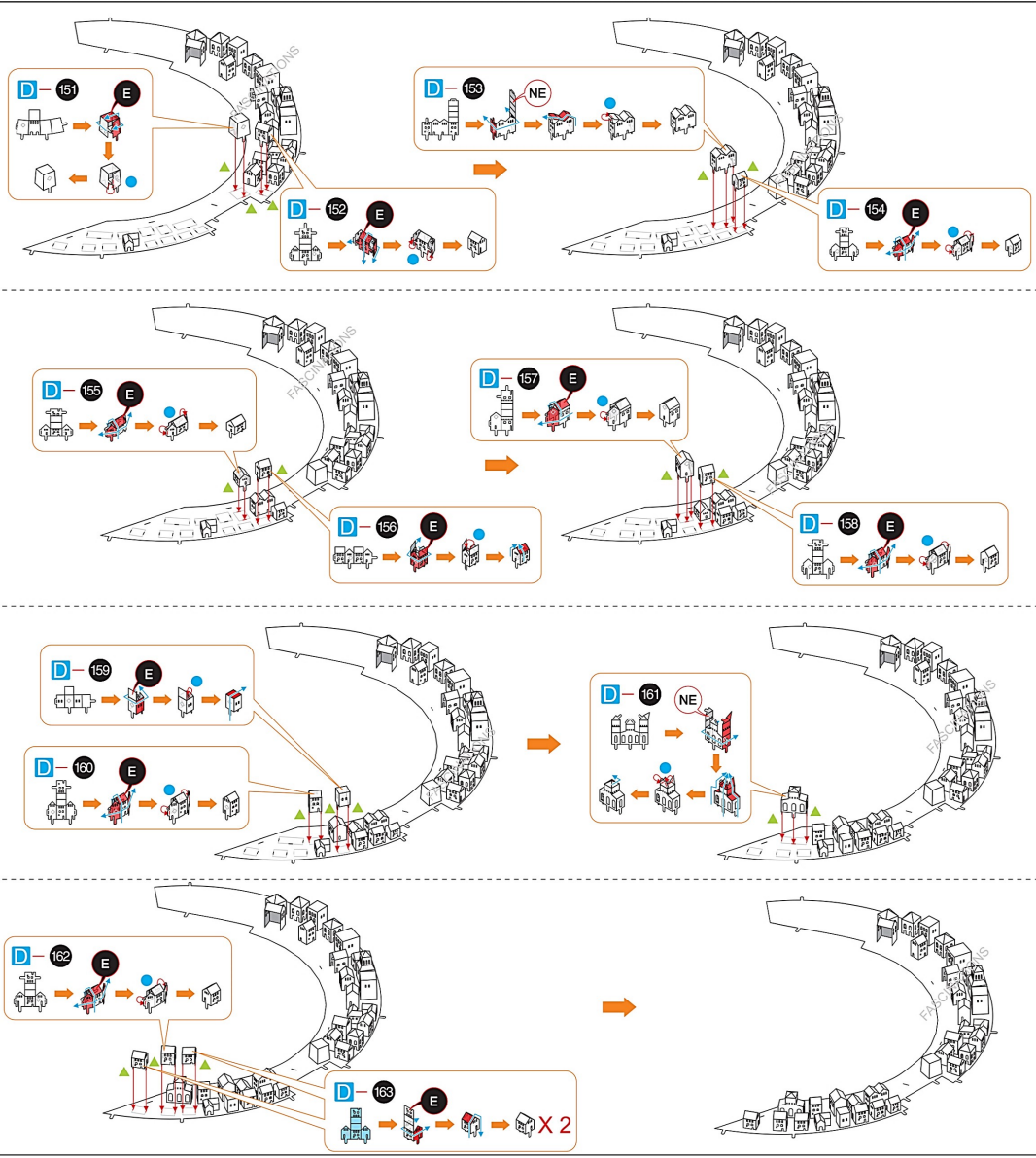














**Step 22**

