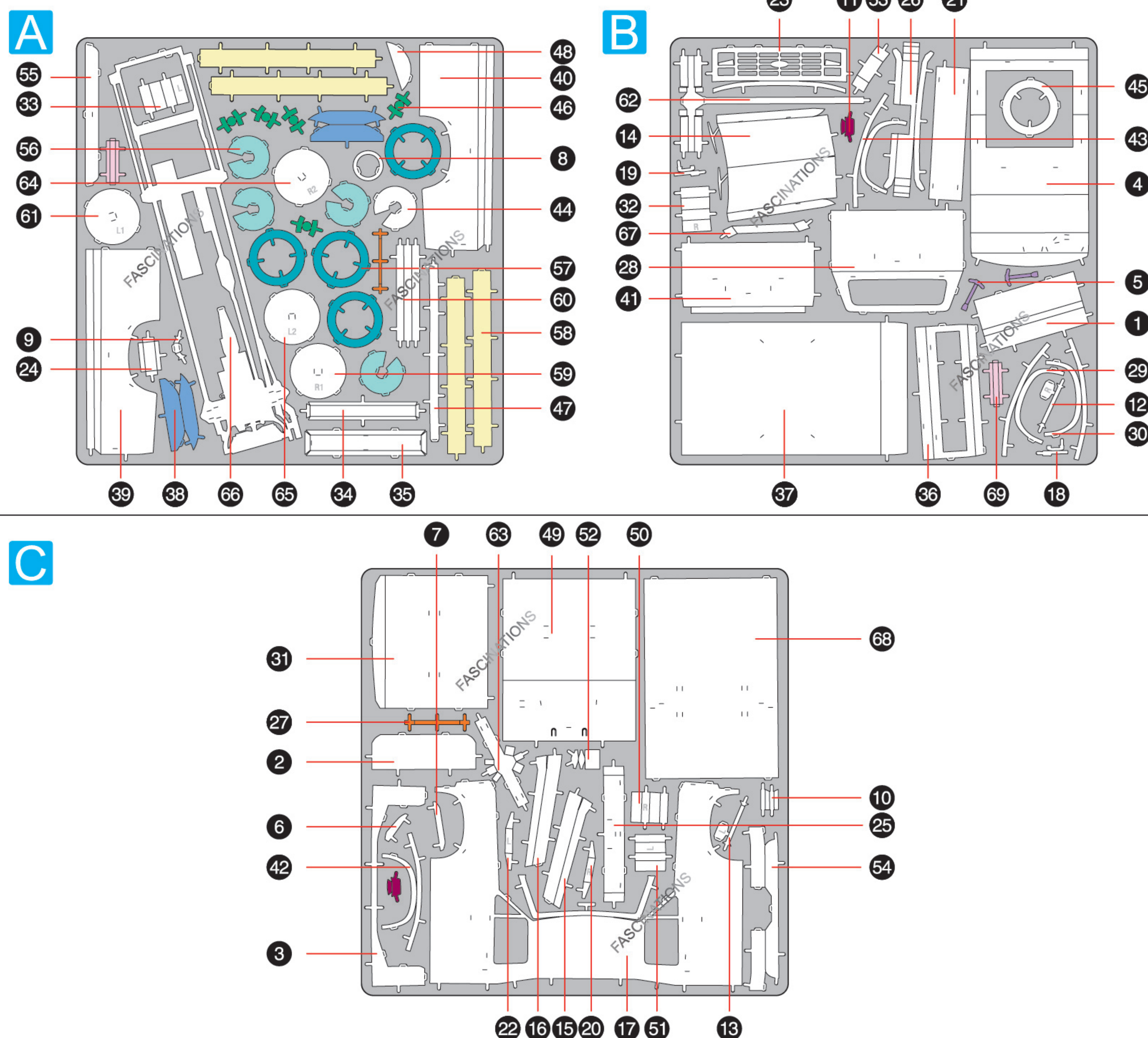


**1982 Ford F-150**  
ME1004



It is highly recommended that you visit  
[www.metalearth.com/360/ME1004](http://www.metalearth.com/360/ME1004)  
to see the completed model before assembling your own

## METAL SHEETS



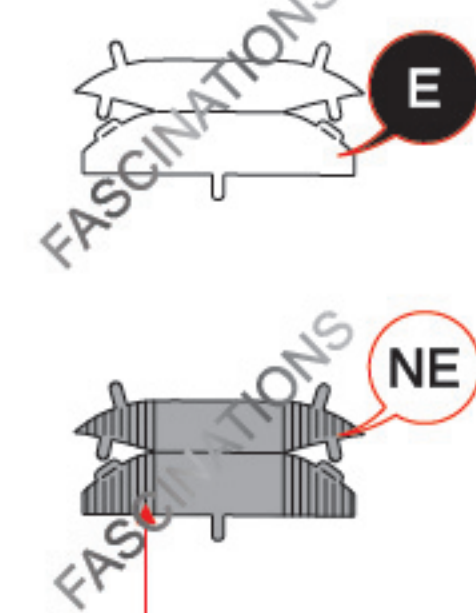
In order to avoid possible injury from sharp edges, please carefully discard the metal sheets after parts have been removed.



Go to [www.metalearth.com/360/ME1004](http://www.metalearth.com/360/ME1004) to see the zoomable PDF version of this instruction sheet

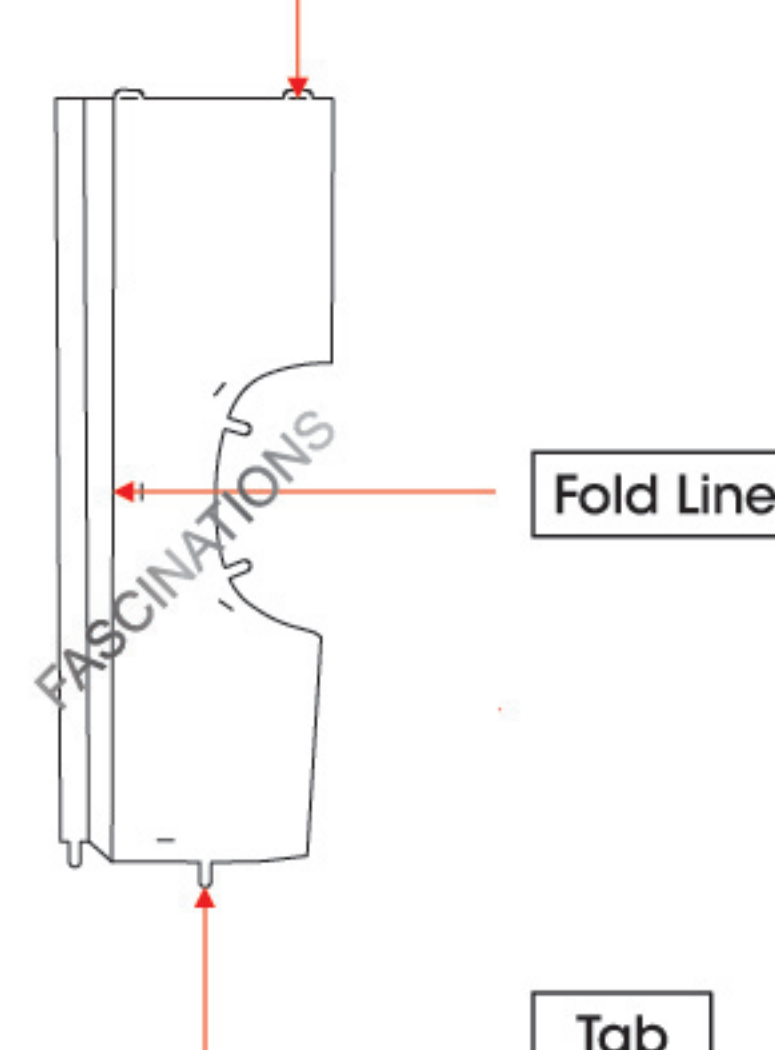
## TO CREATE THE BEST CONNECTIONS

A - 38



Consider these engraved stripes as supporting features for the bend

A - 39



### Legends:

- E Engraved/ Color side
- NE Non - engraved/ Silver side
- Attention point
- Insert tab and bend 90 degrees
- ▲ Insert tab and twist 90 degrees

### Assembly tip:

If needed, slightly twist tabs to hold parts together then untwist and bend them down for a nice finish.

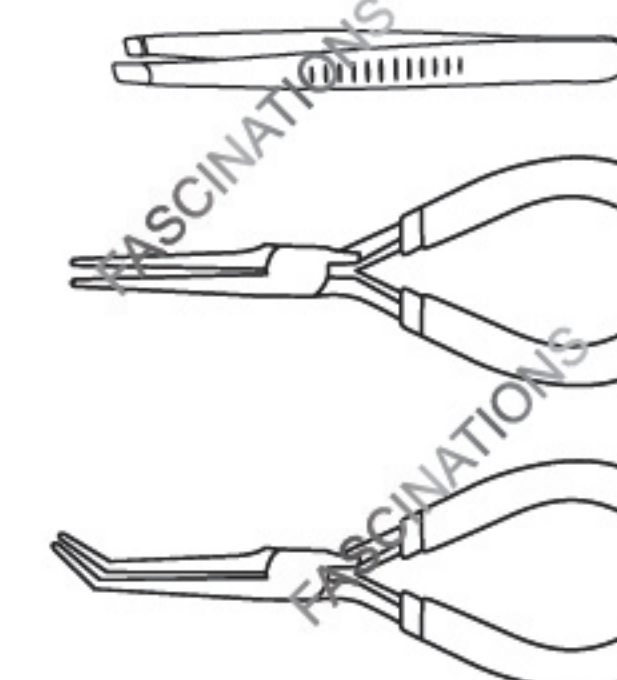
- Yellow areas should be curled
- Red areas should be folded

### Recommended tools:

- Wire cutters: helpful for taking parts from the metal sheets.

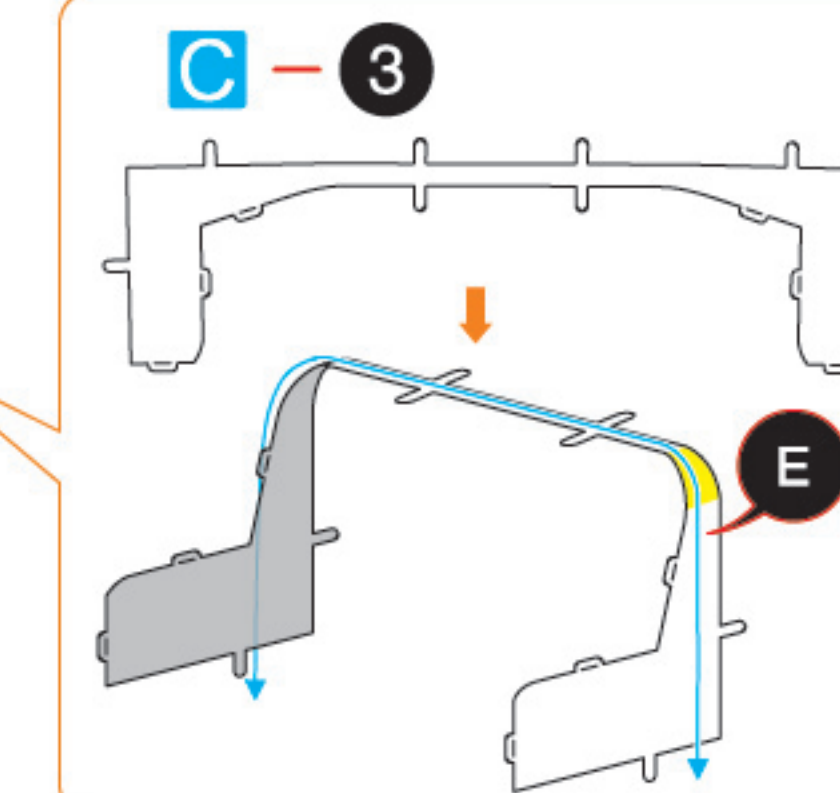
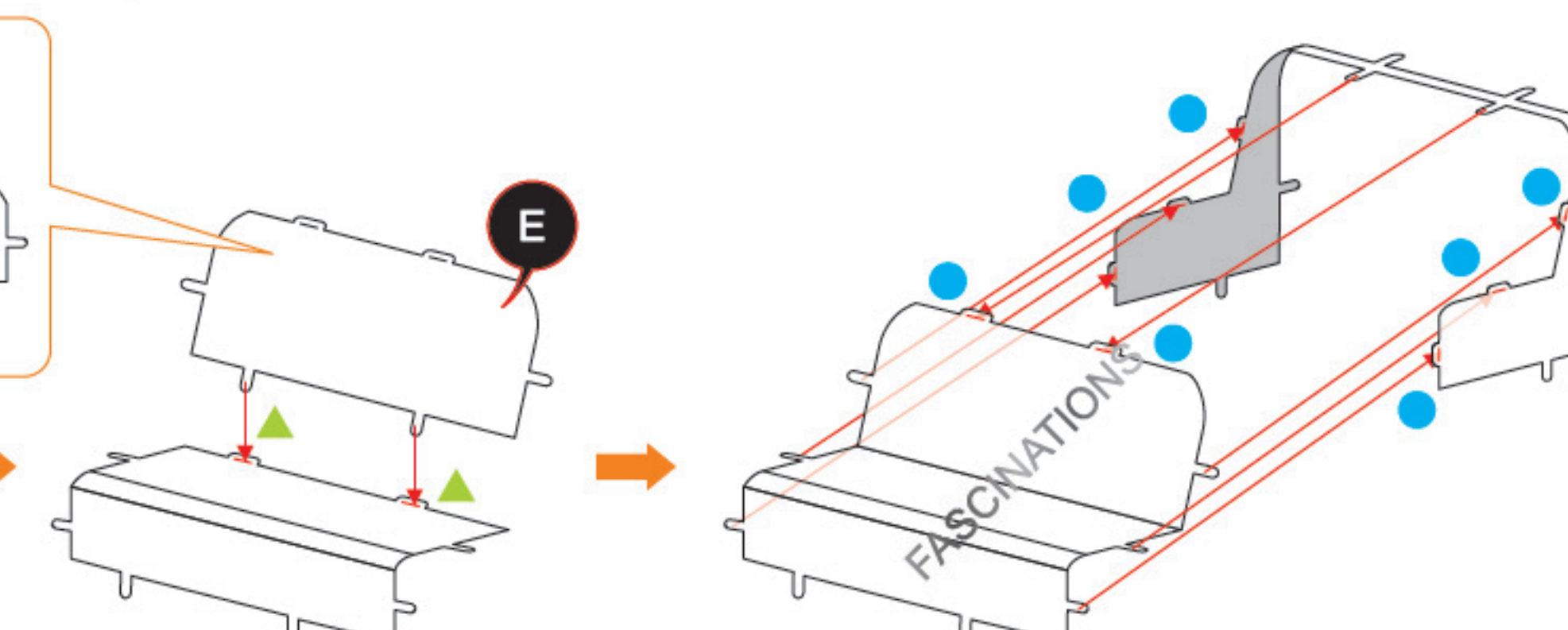
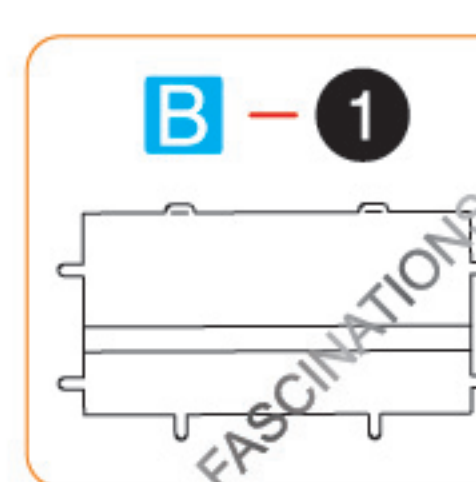


- Tweezers or needle nose pliers: helpful for folding parts, bending and twisting tabs.

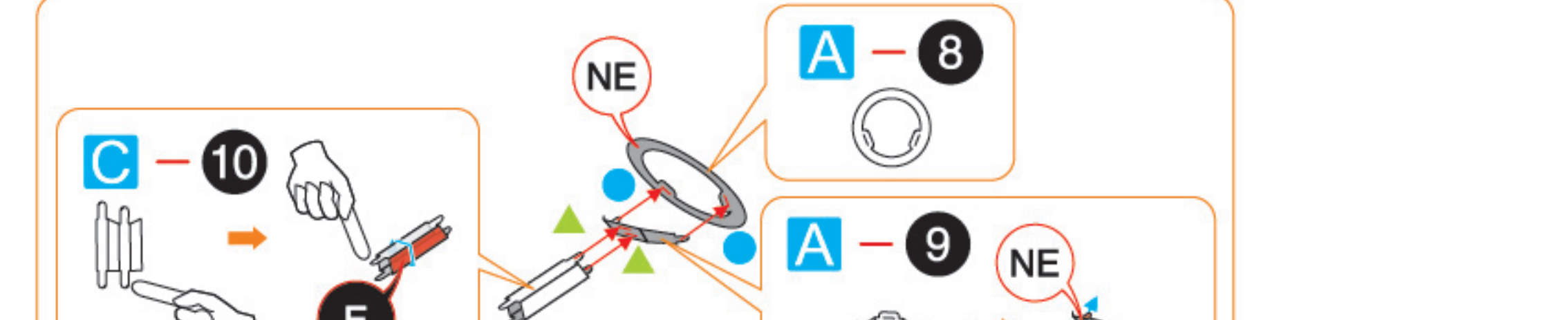
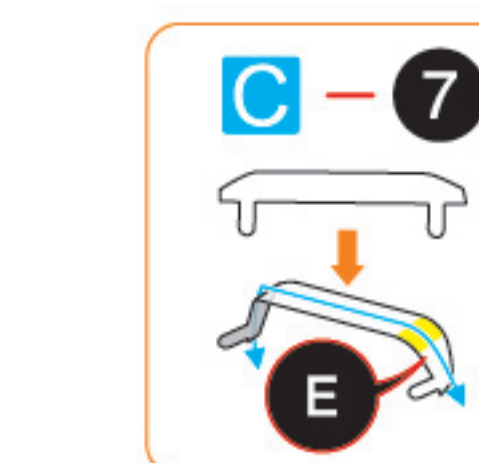
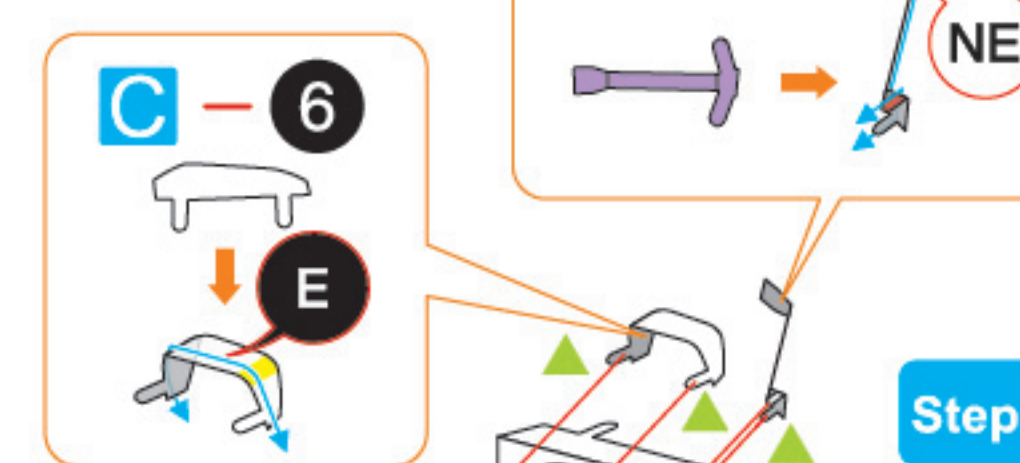


## ASSEMBLY FLOW CHART

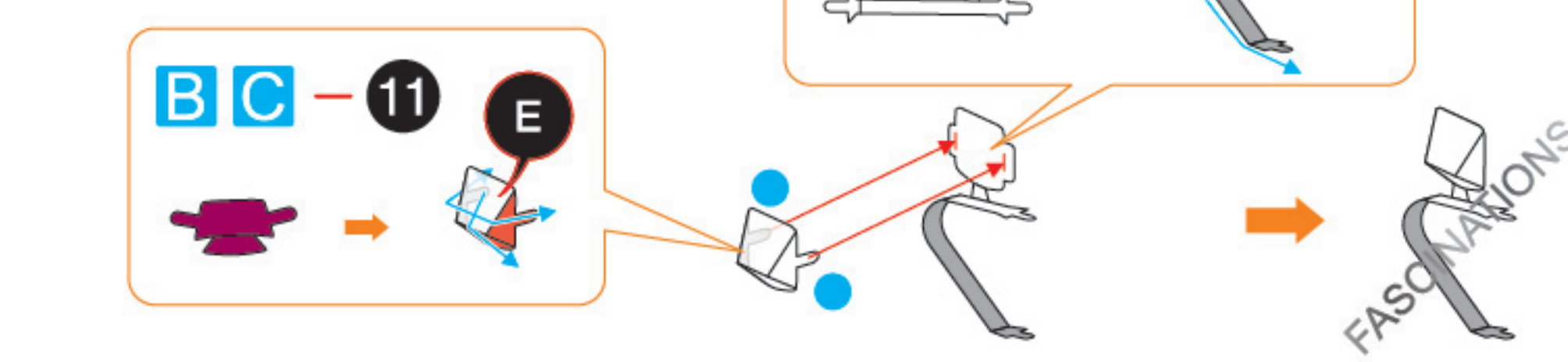
### Step 1



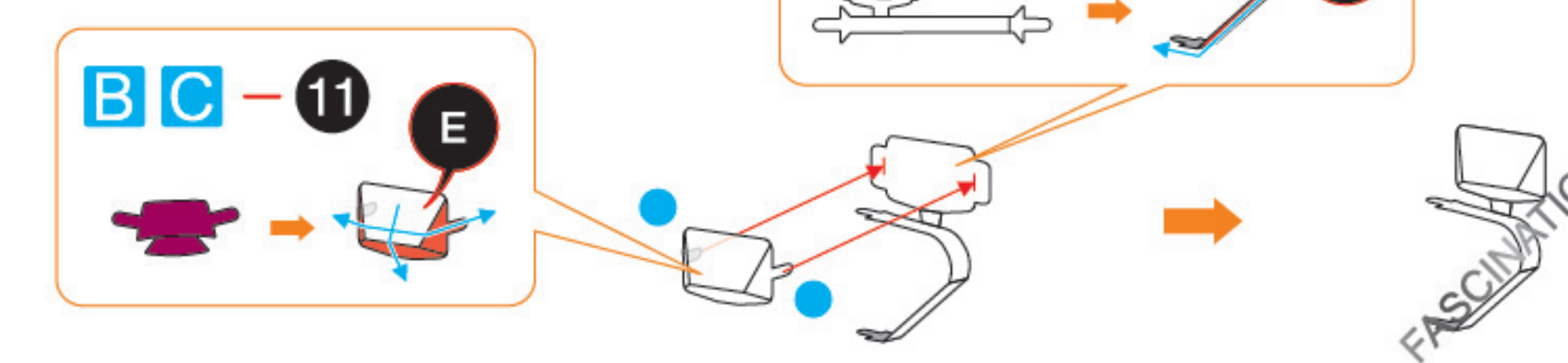
### Step 2



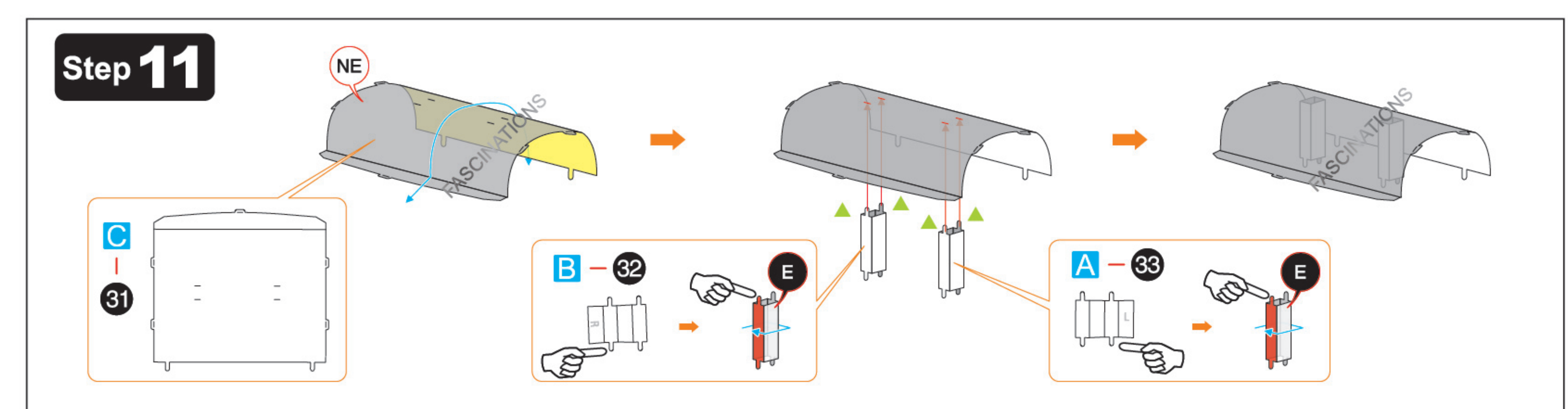
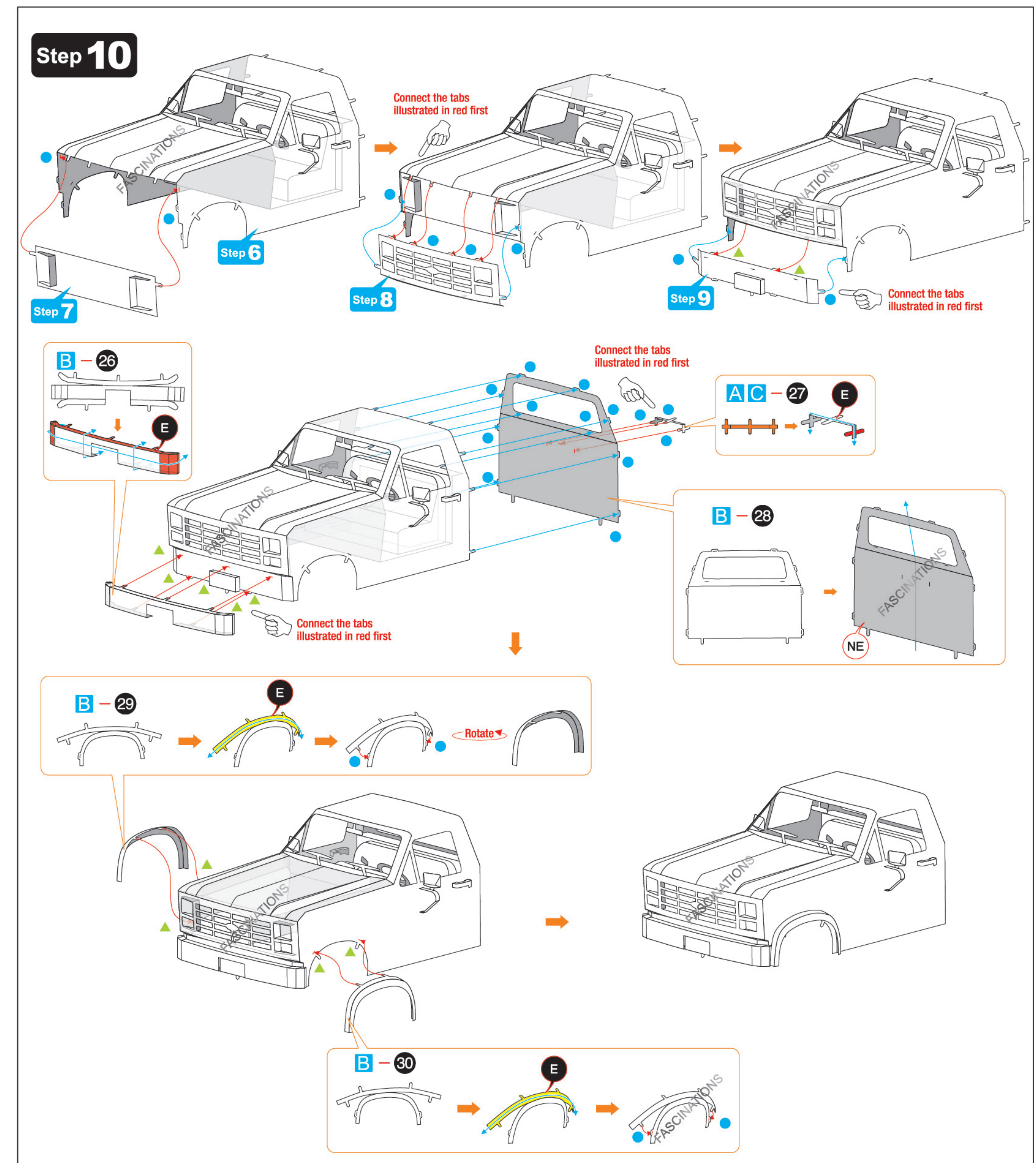
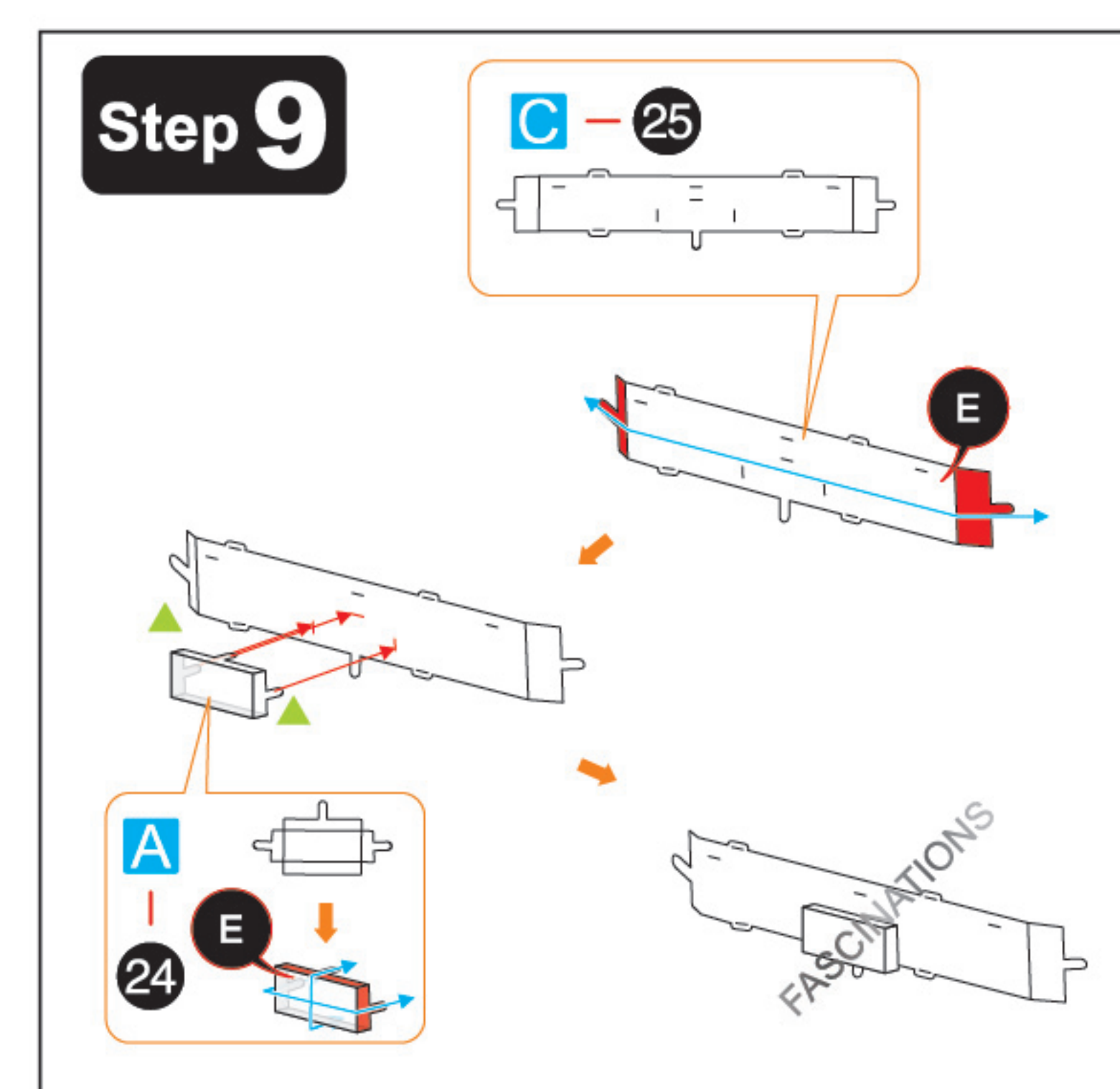
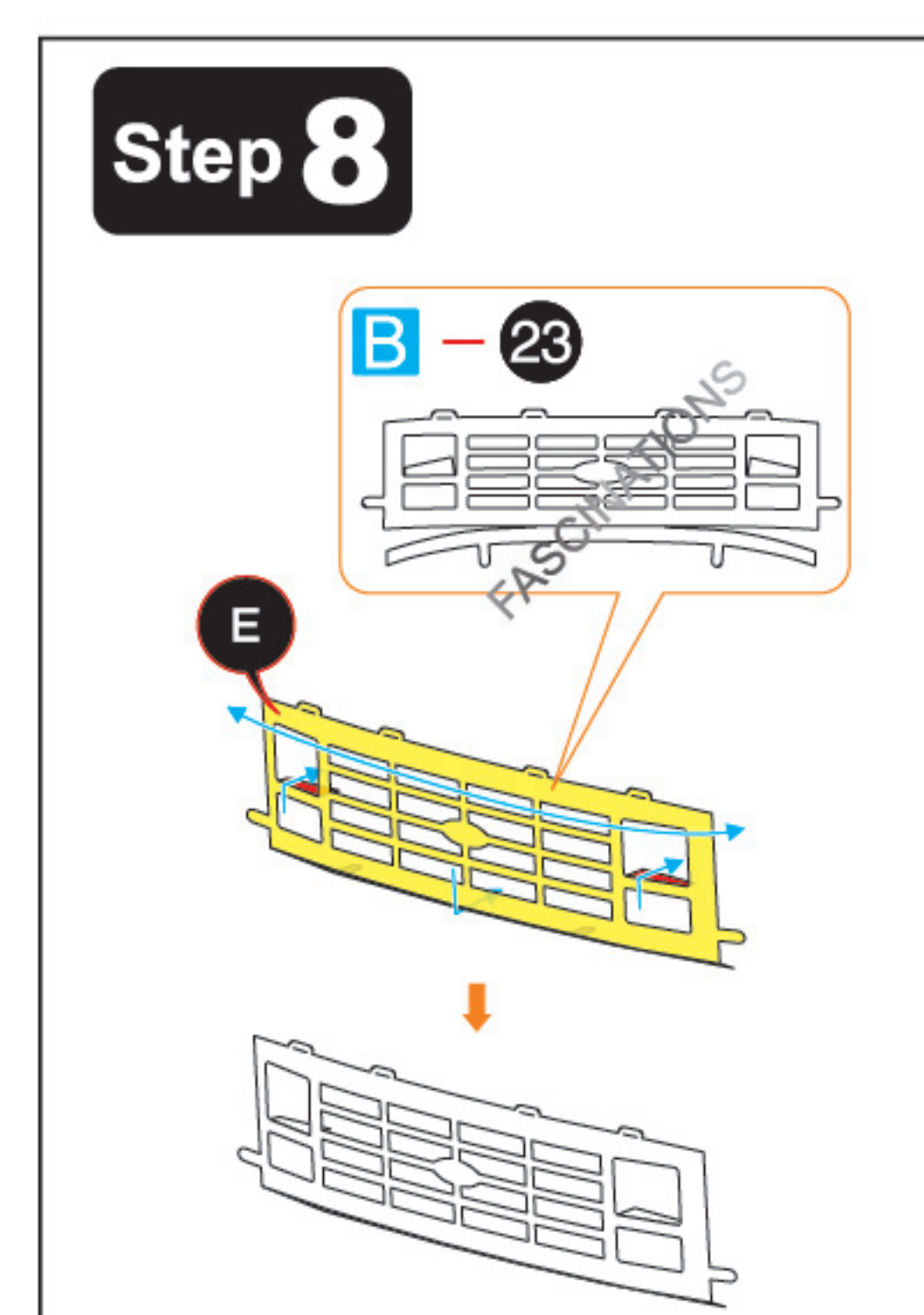
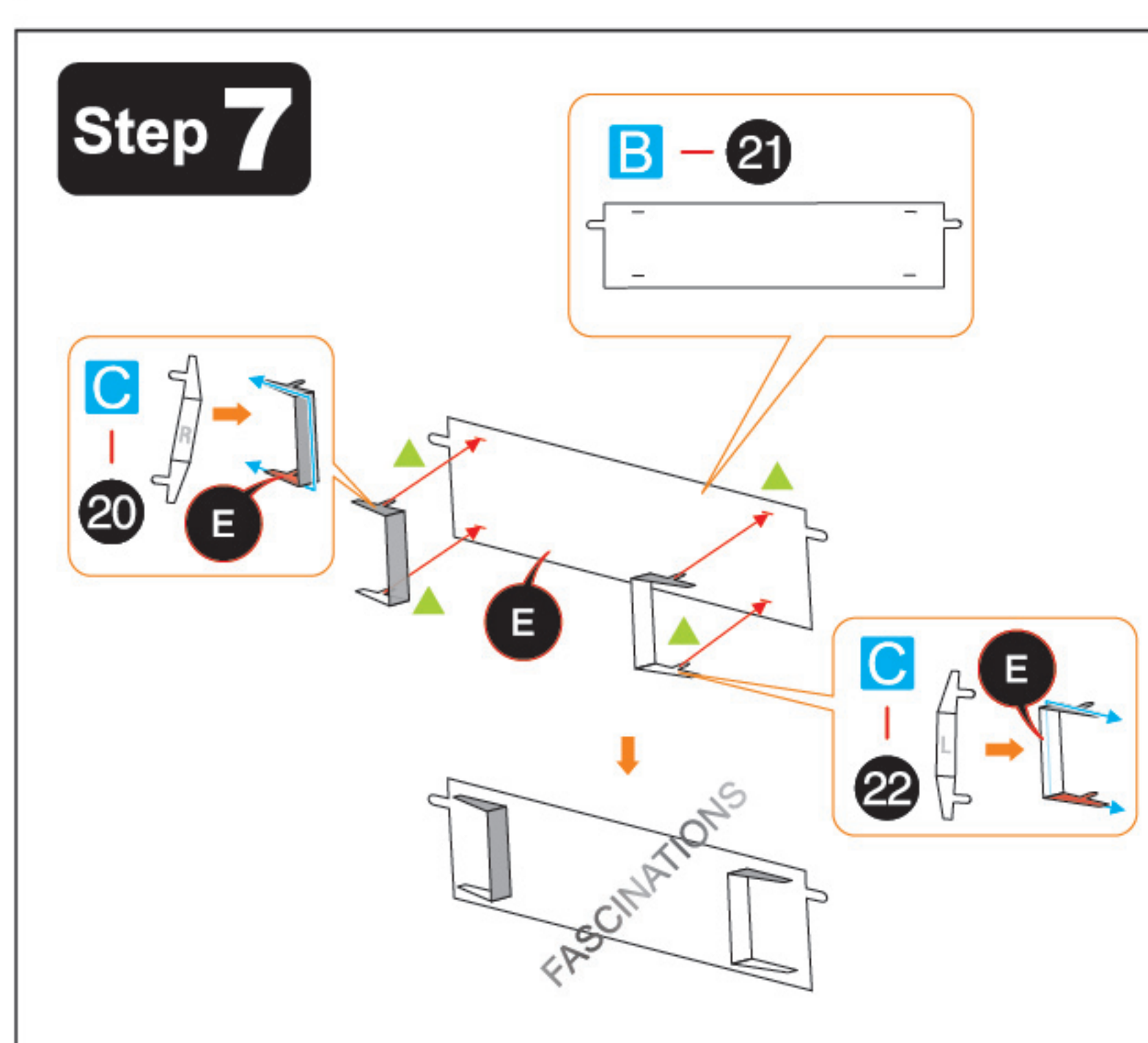
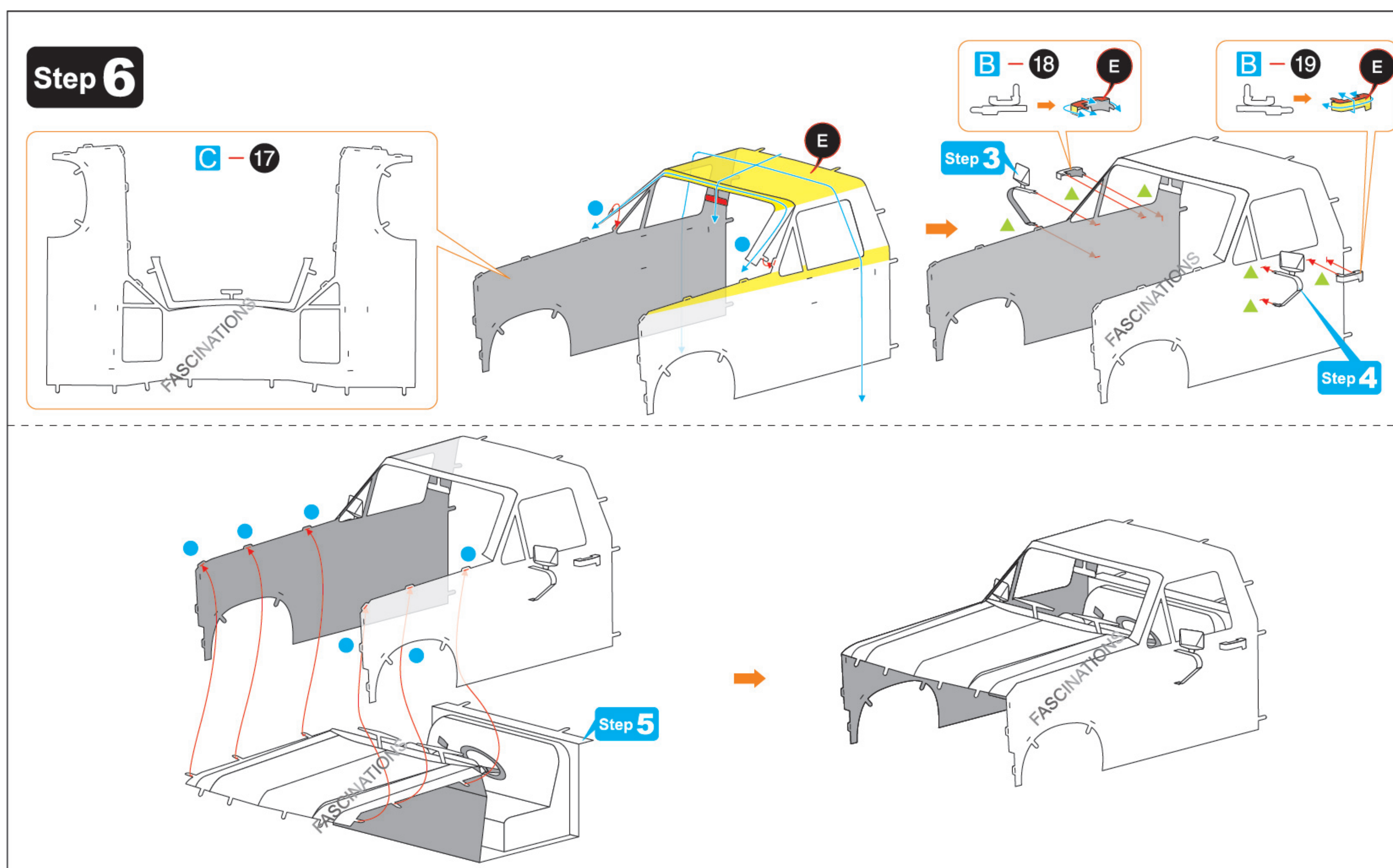
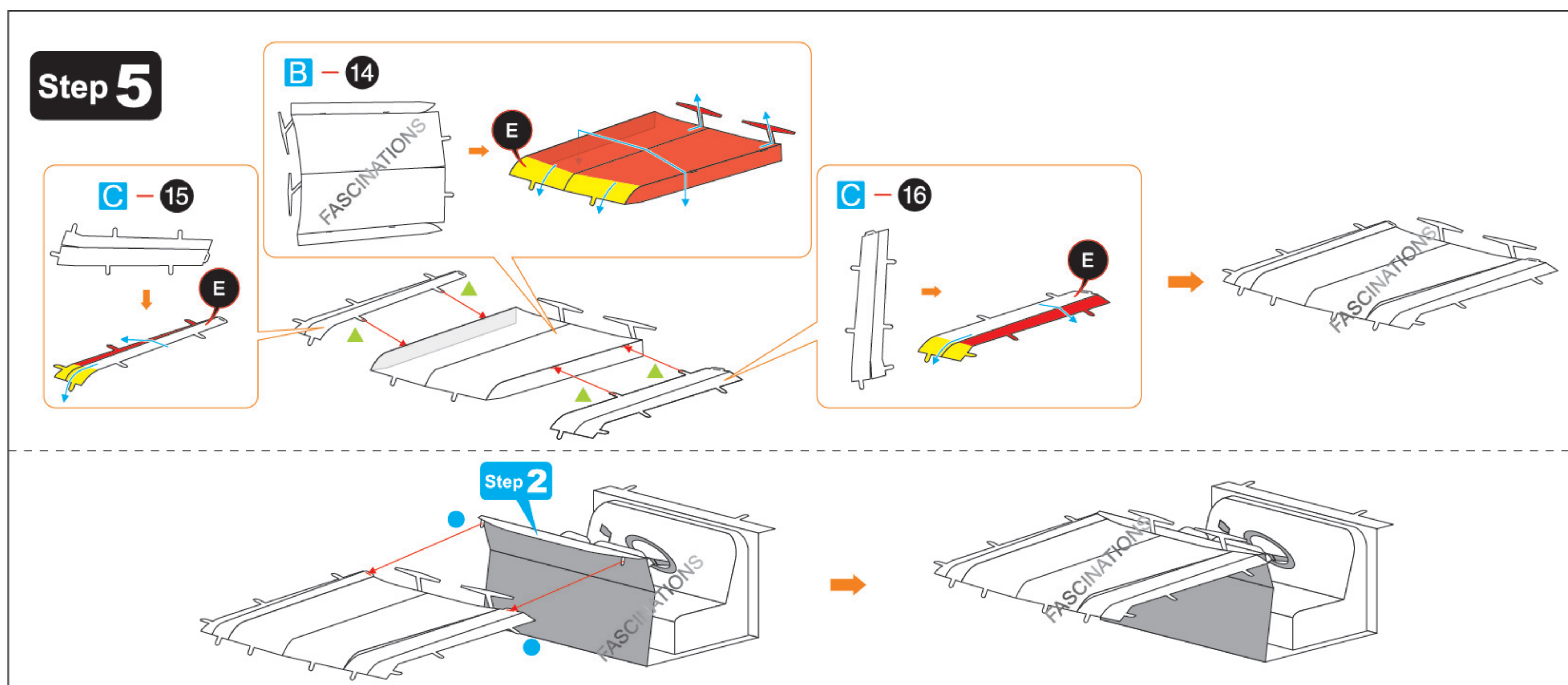
### Step 3



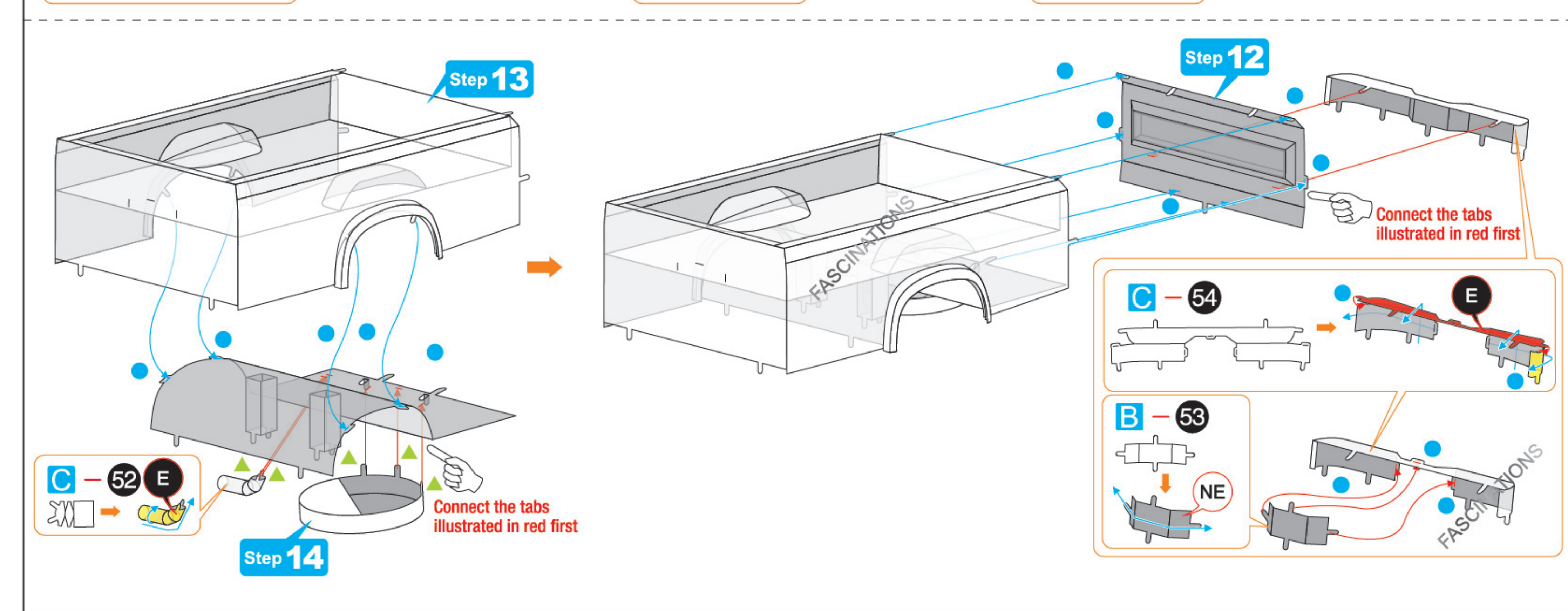
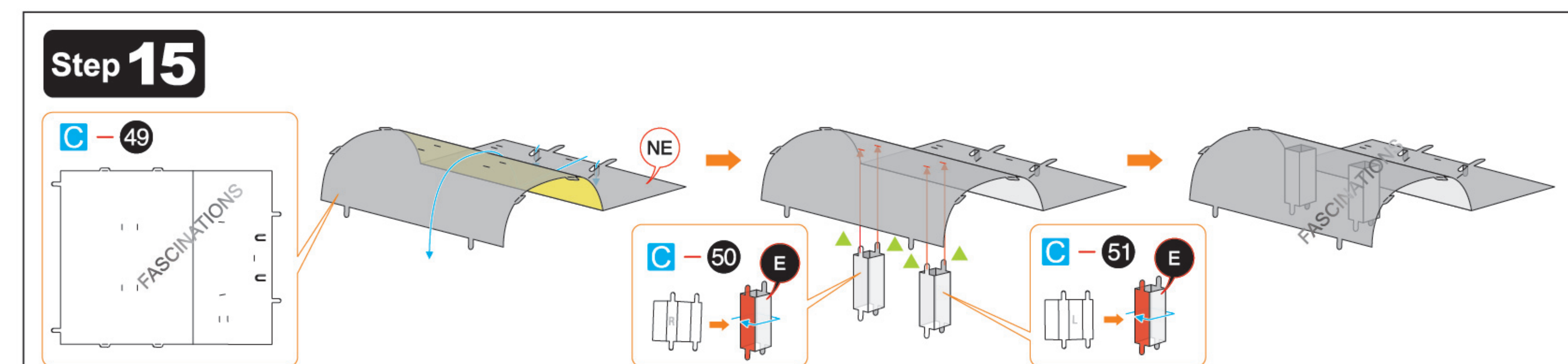
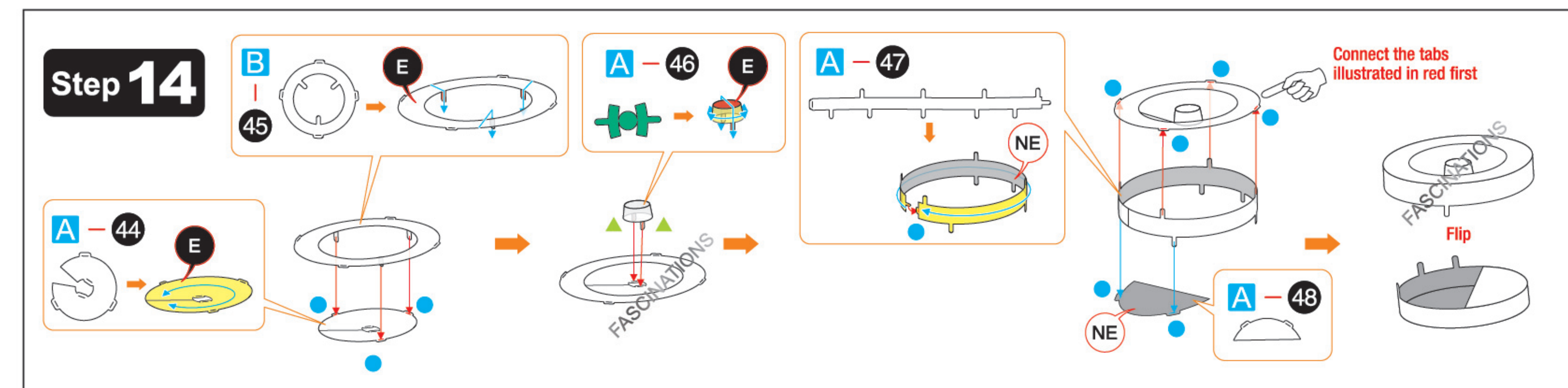
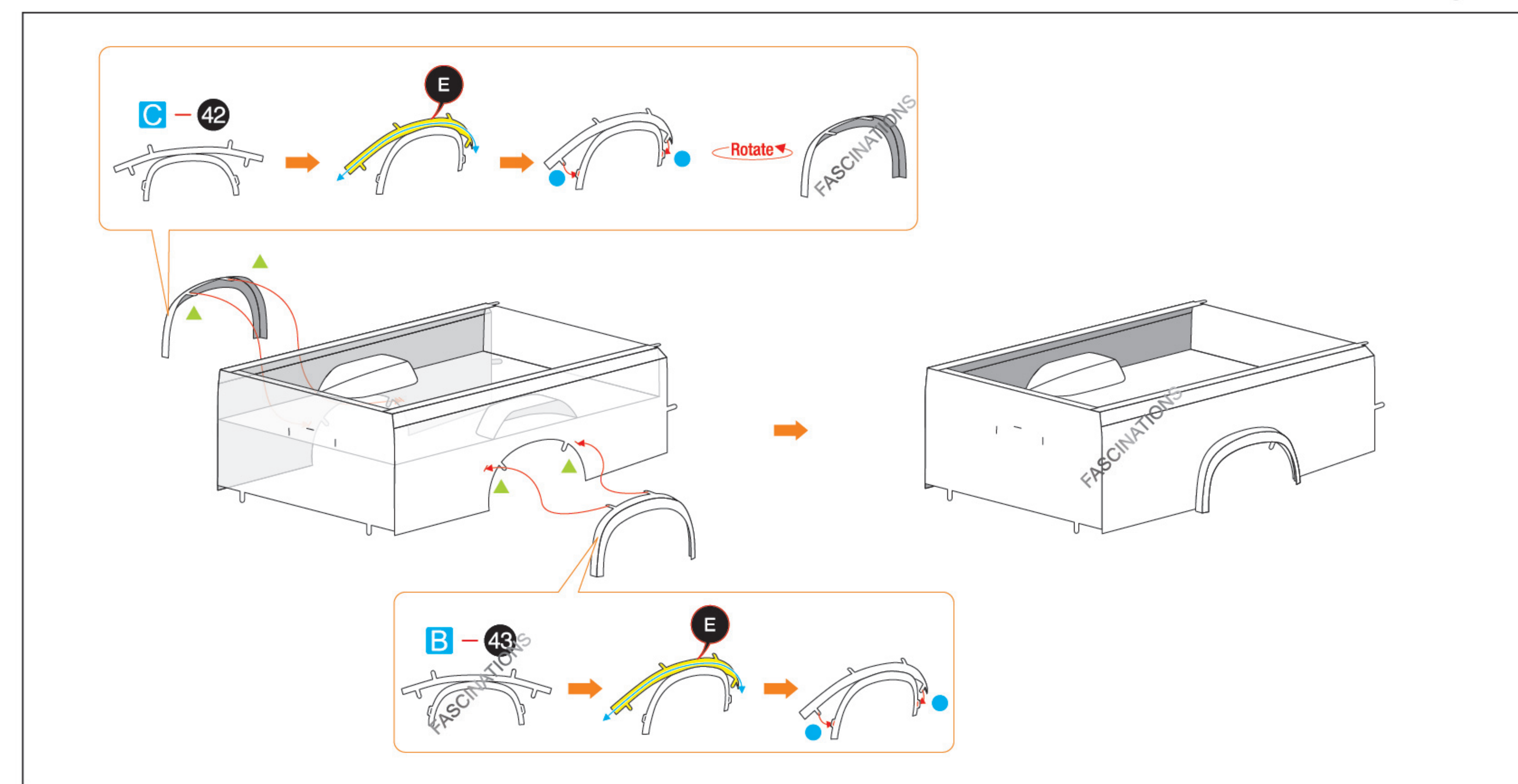
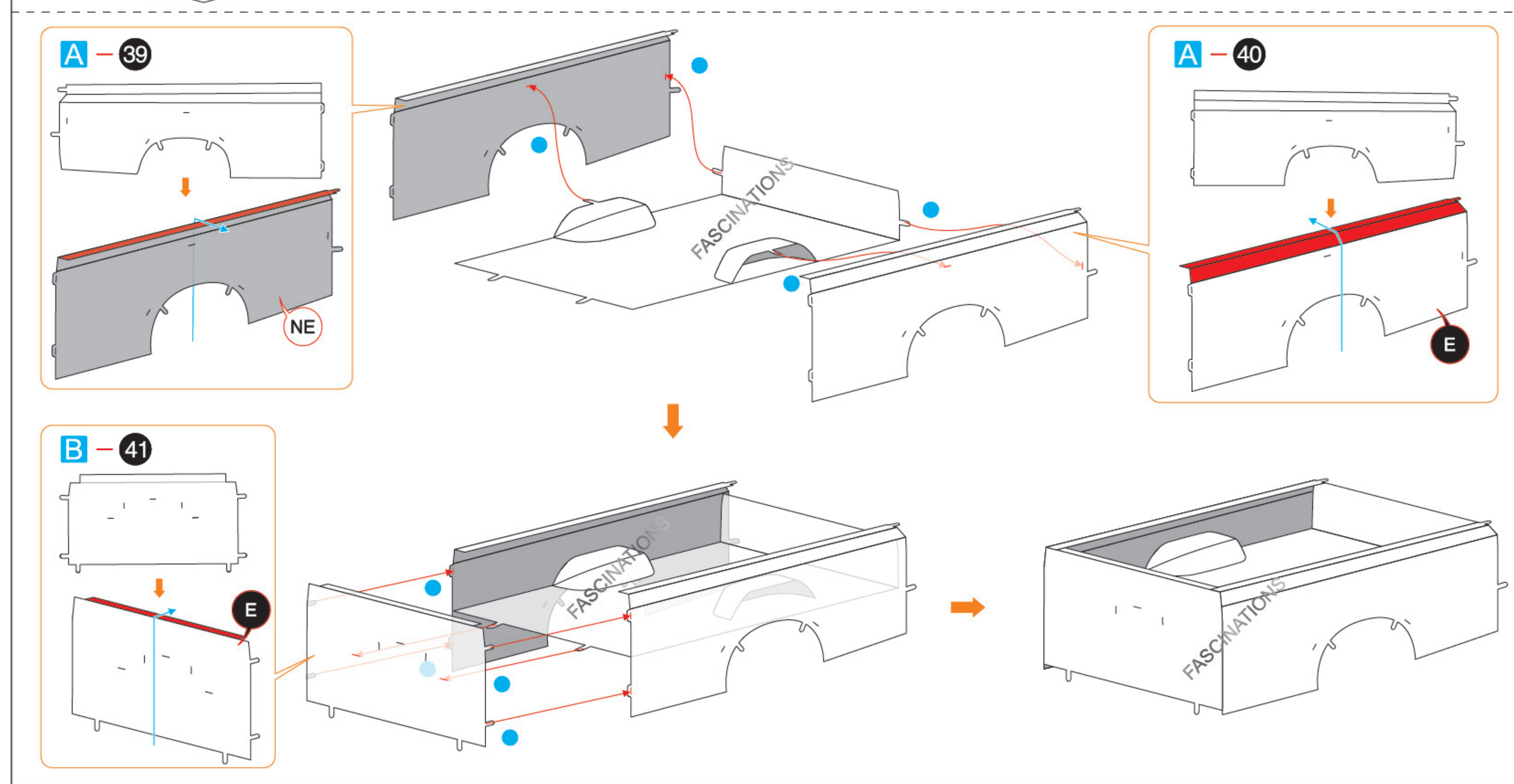
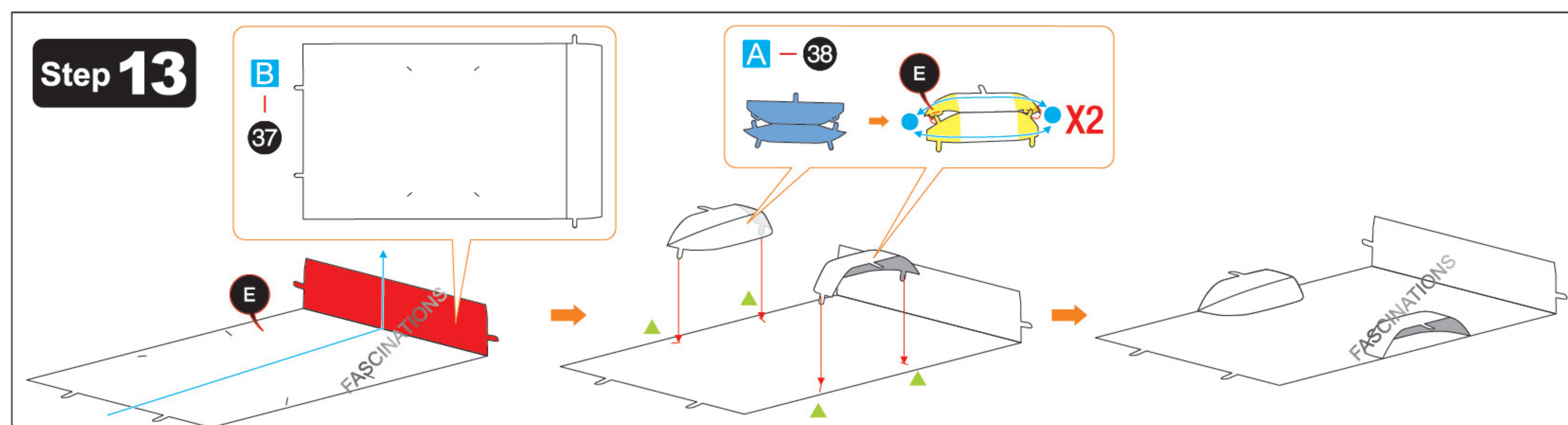
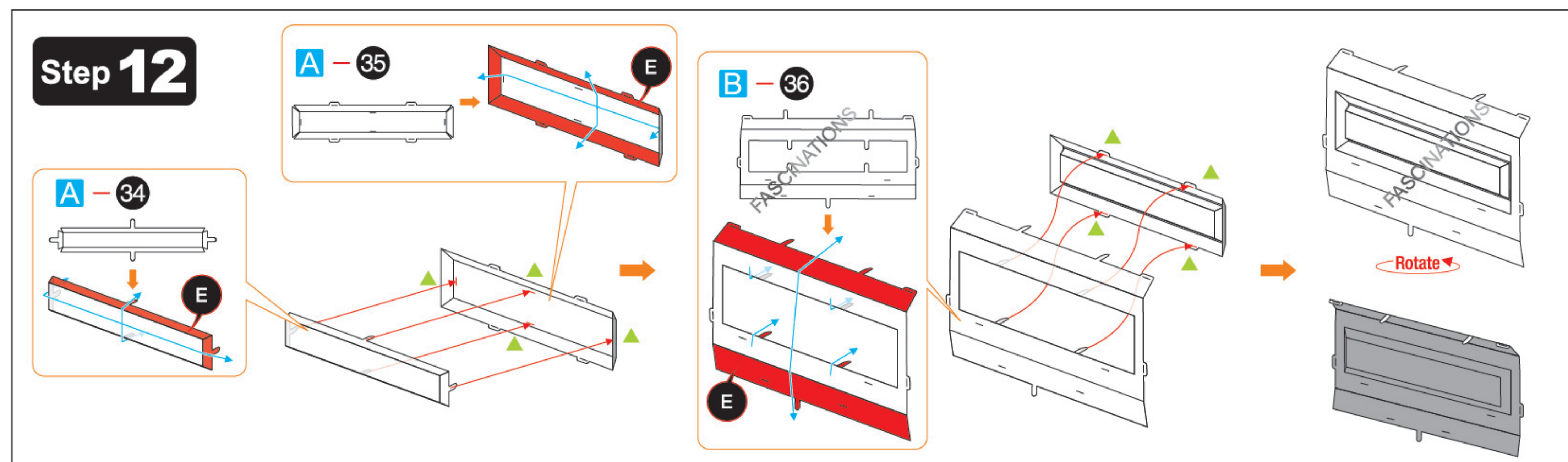
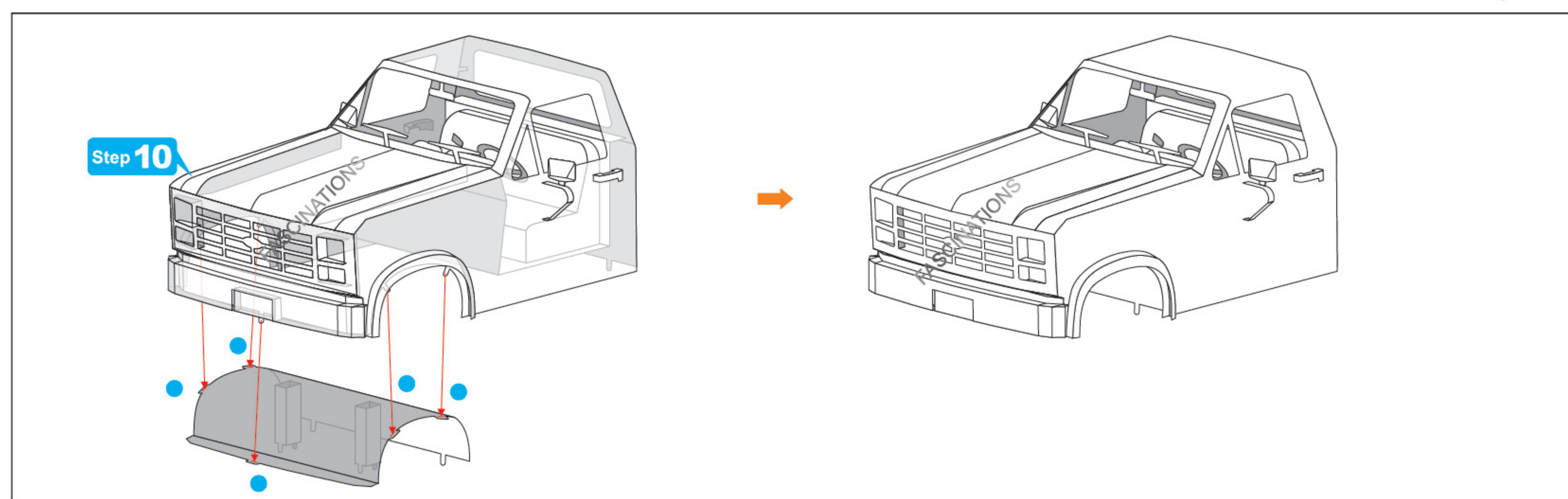
### Step 4



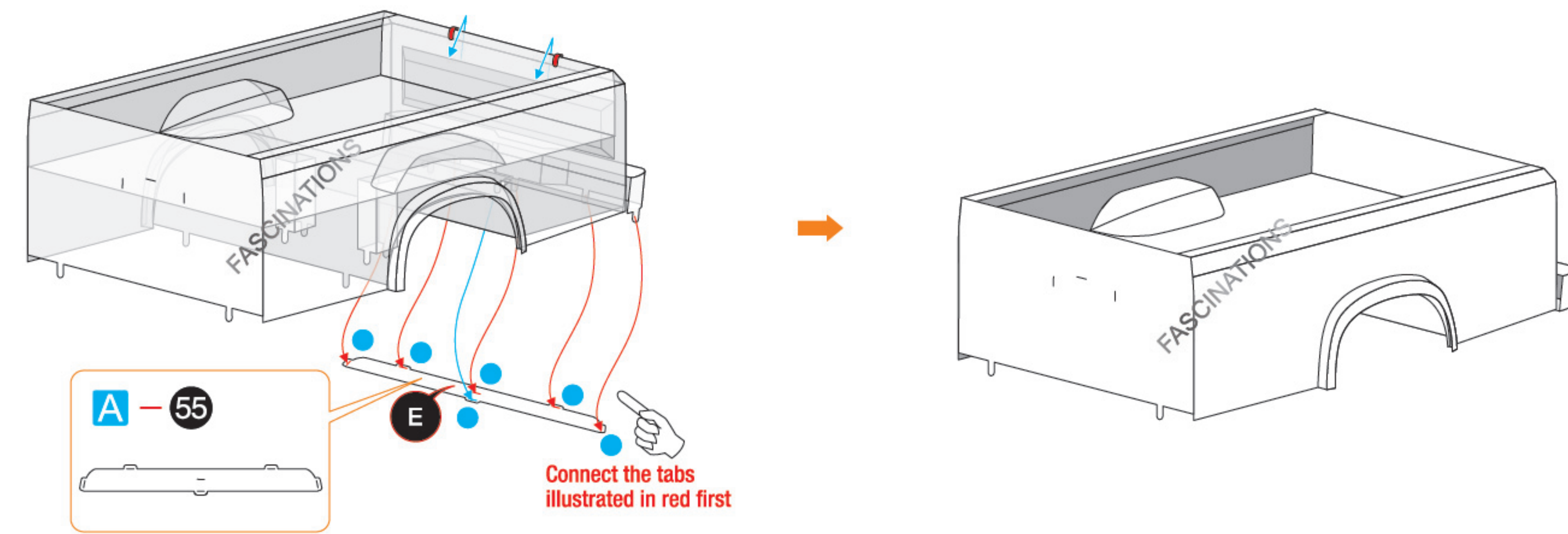




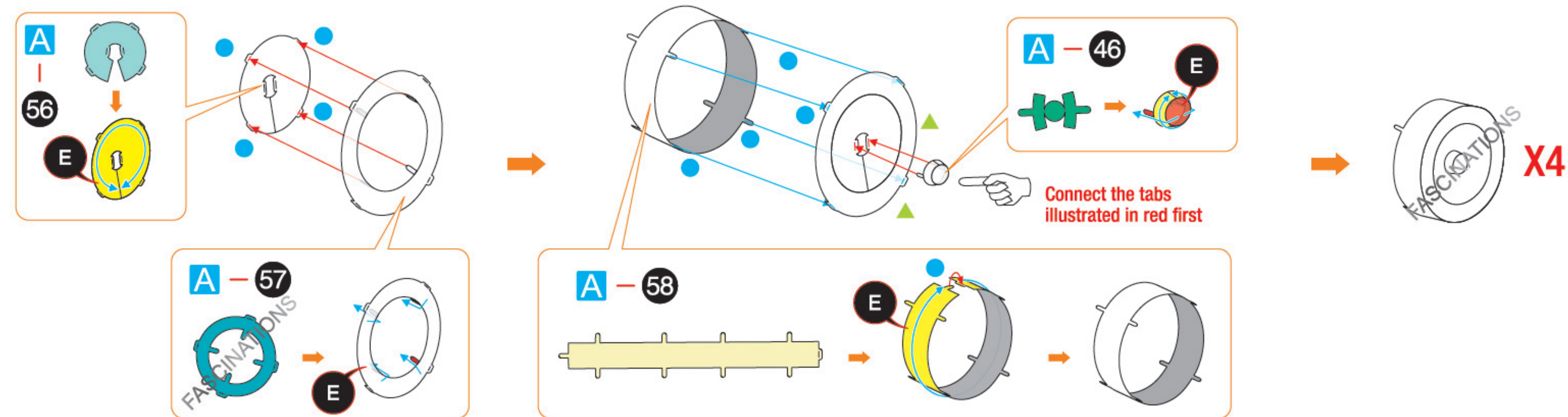




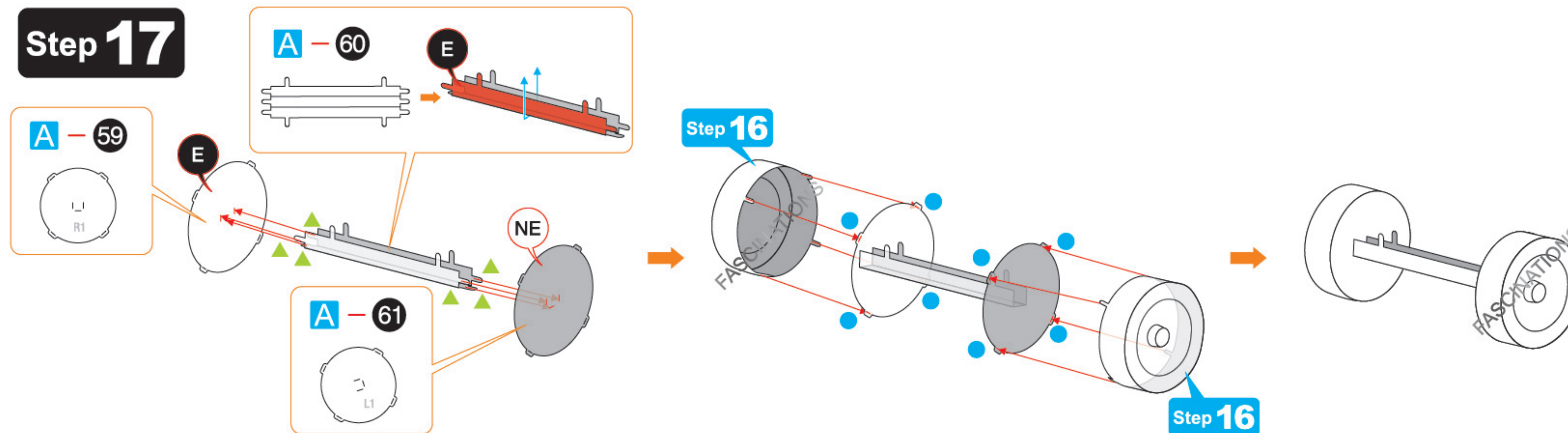




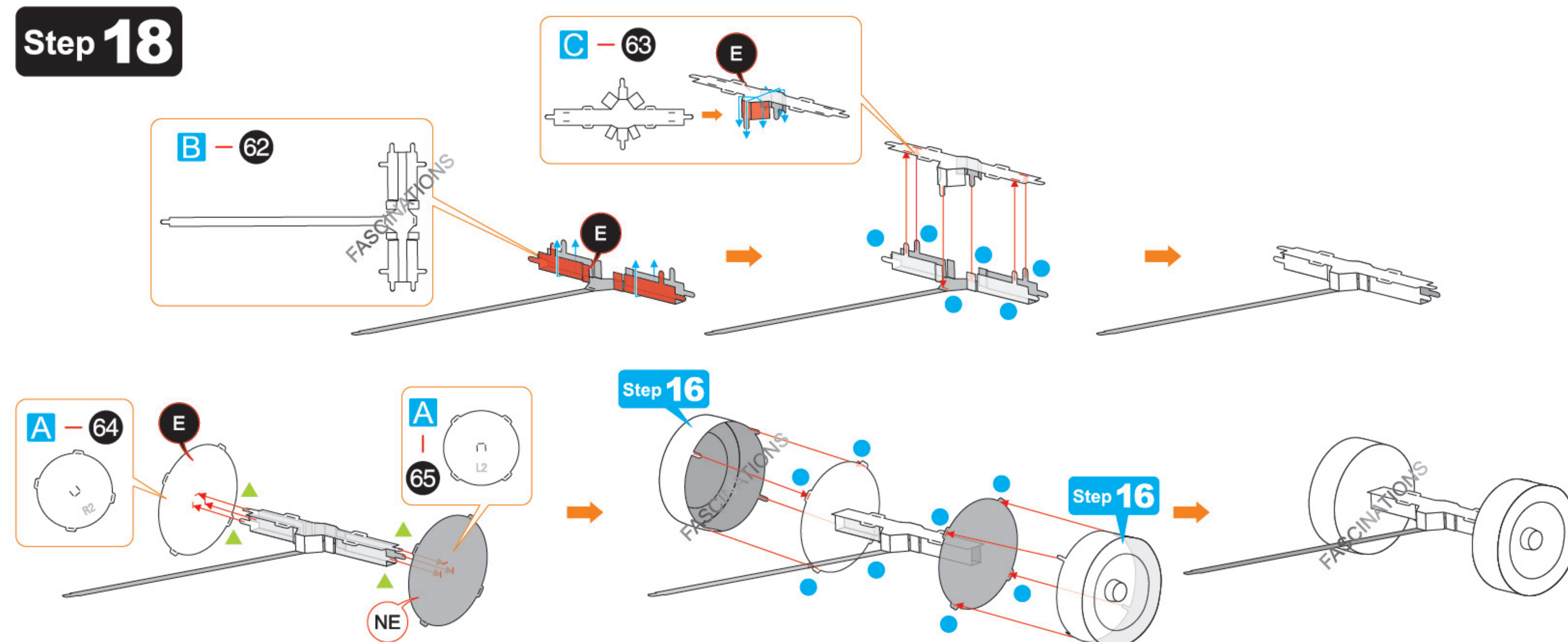
## Step 16



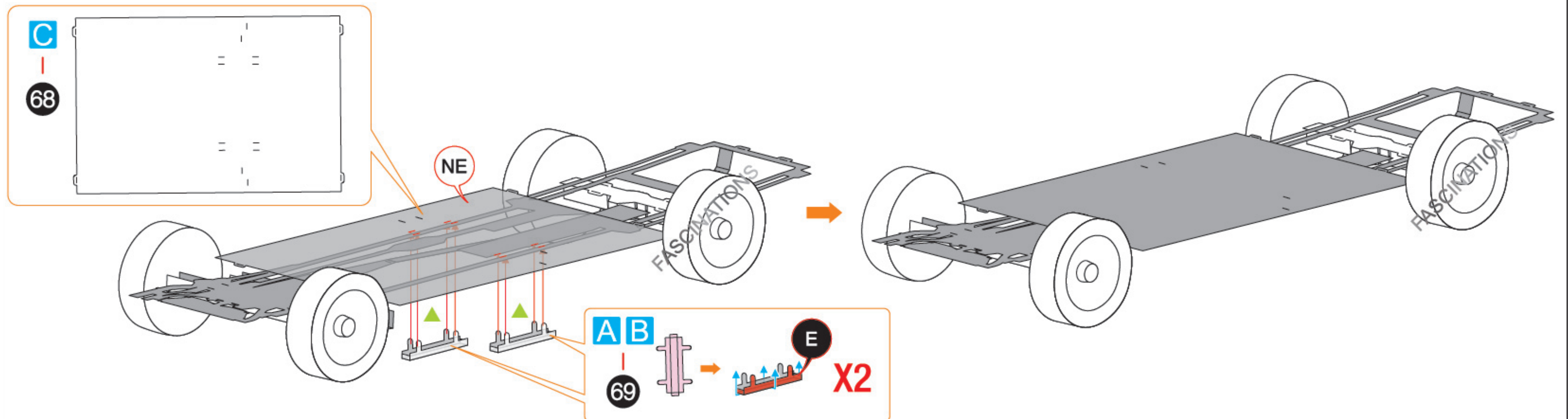
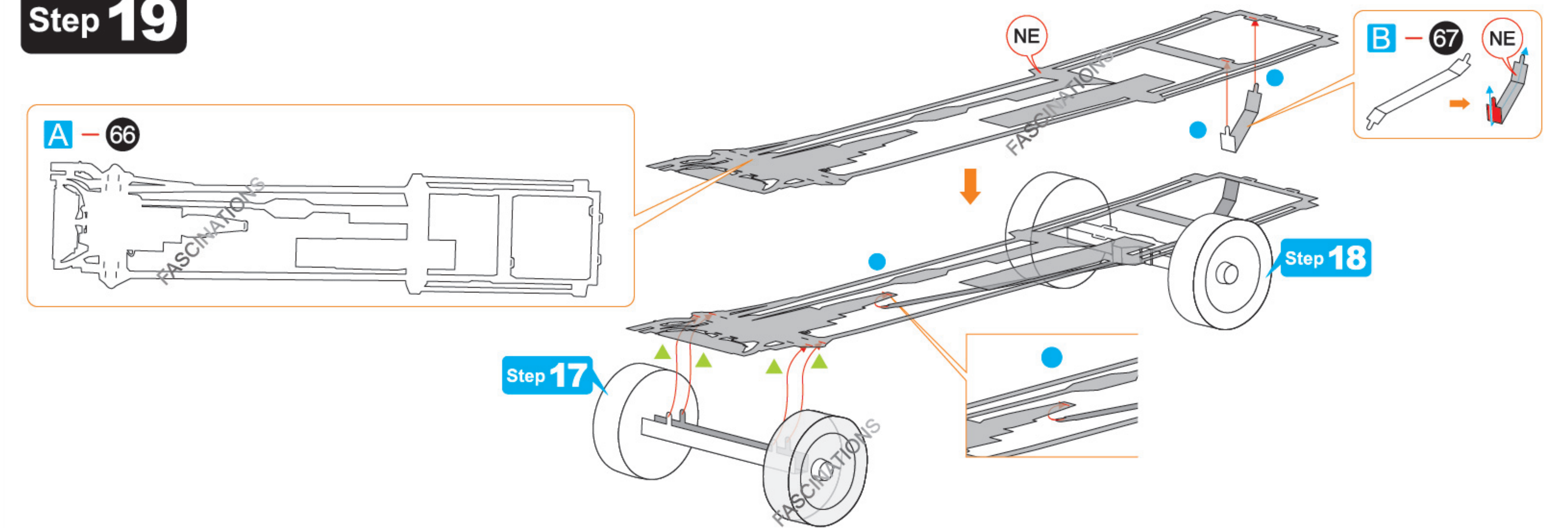
## Step 17



## Step 18



## Step 19



## Step 20

