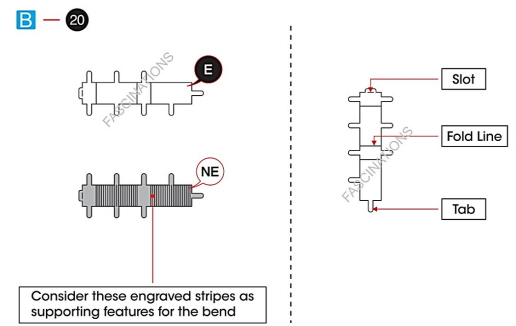


JAMES WEBB SPACE TELESCOPE MMS497

It is highly recommended that you visit www.metalearth.com/360/MMS497 to see the completed model before assembling your own



TO CREATE THE BEST CONNECTIONS



Legends:

- E** Engraved/ Color side
- NE** Non - engraved/ Silver side
- Attention point
- Insert tab and bend 90 degrees
- Insert tab and twist 90 degrees

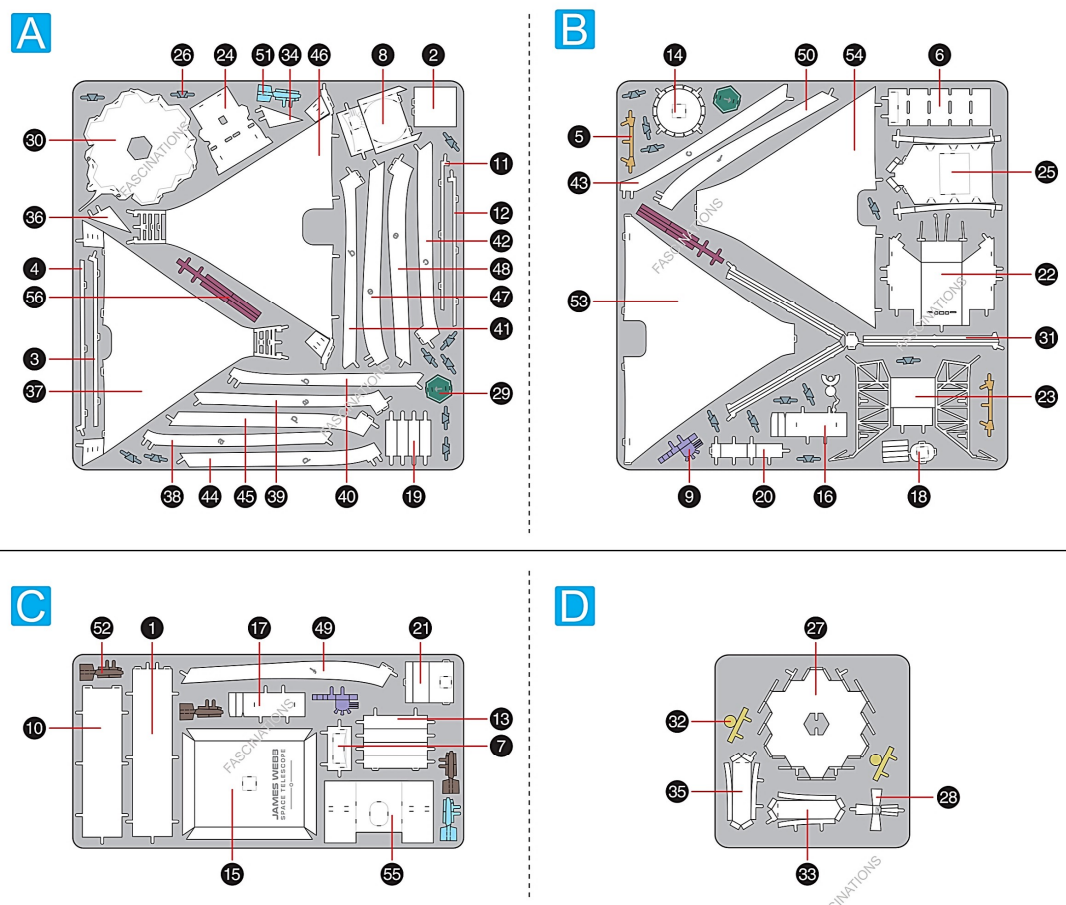
Recommended tools:

- Wire cutters: helpful for taking parts from the metal sheets.
- Tweezers or needle nose pliers: helpful for folding parts, bending and twisting tabs.

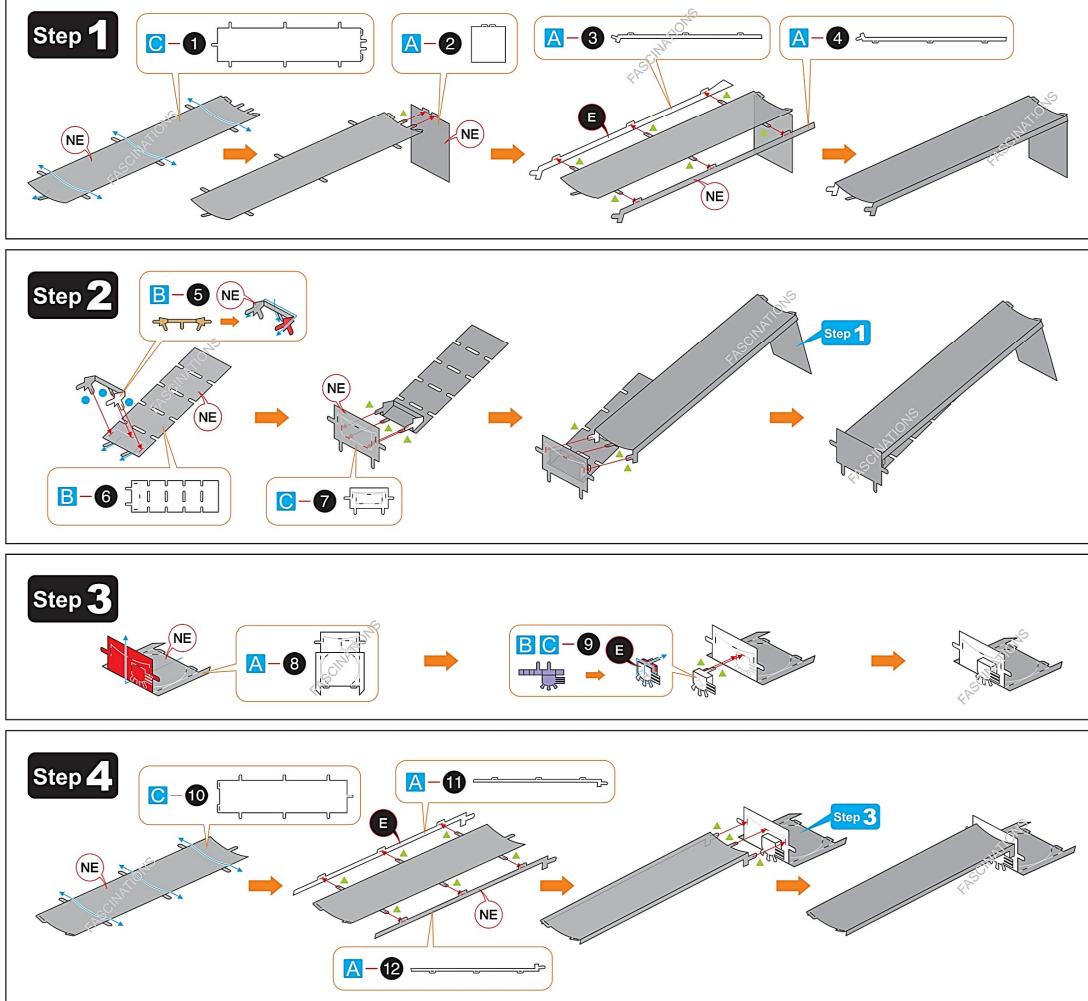
Assembly tip:

- If needed, slightly twist tabs to hold parts together then untwist and bend them down for a nice finish.
- Yellow areas should be curled
- Red areas should be folded

METAL SHEETS

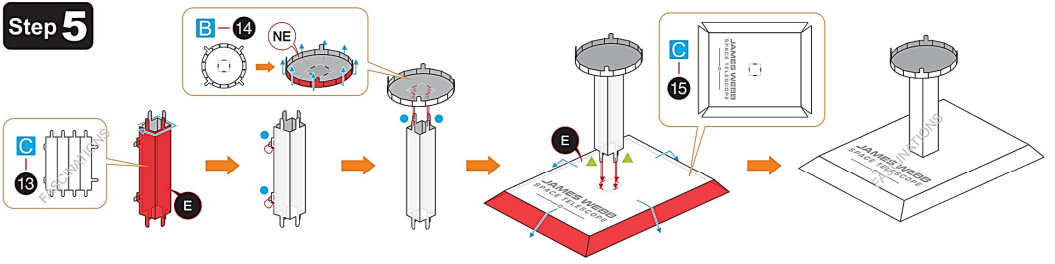


ASSEMBLY FLOW CHART

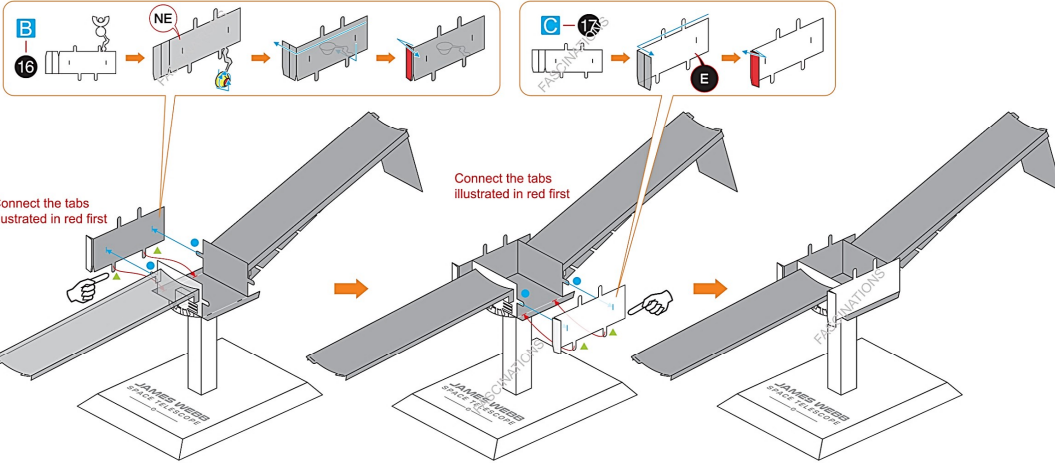
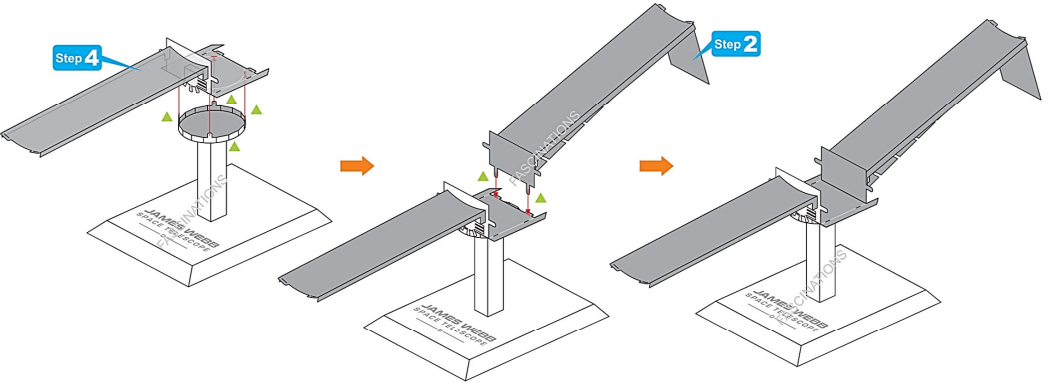


In order to avoid possible injury from sharp edges, please carefully discard the metal sheets after parts have been removed.

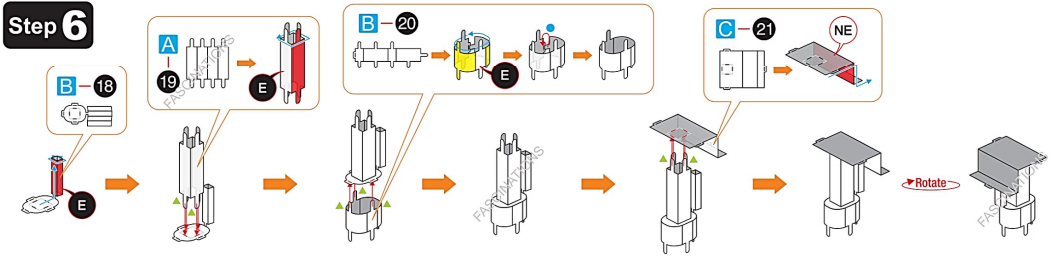
Step 5



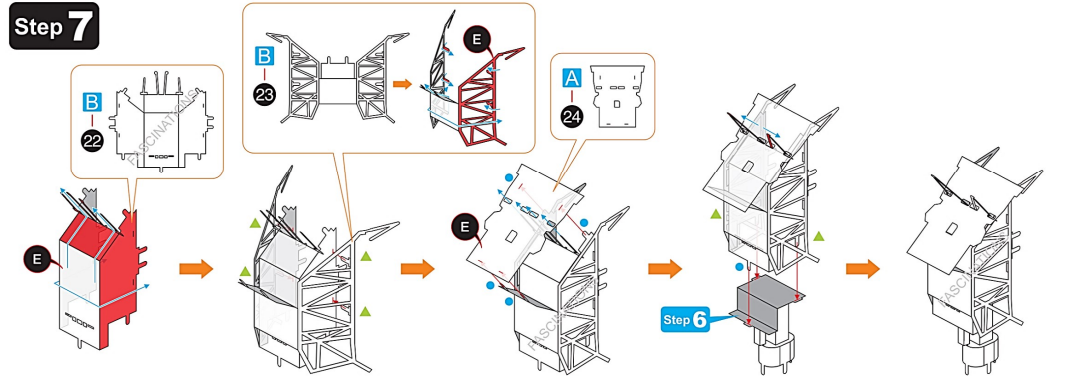
Step 4



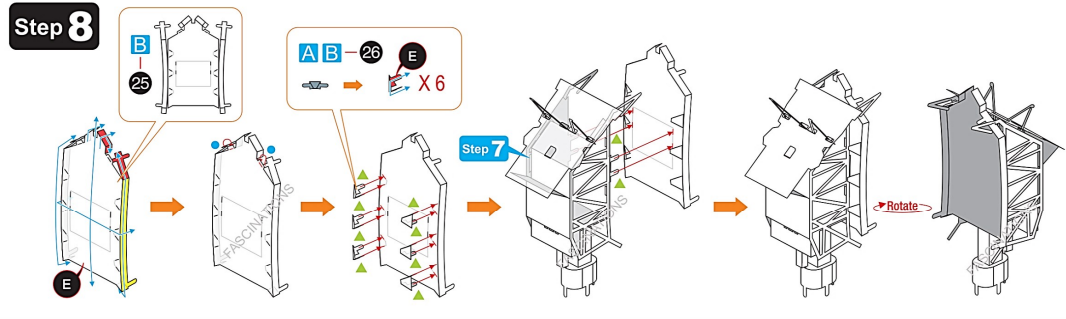
Step 6



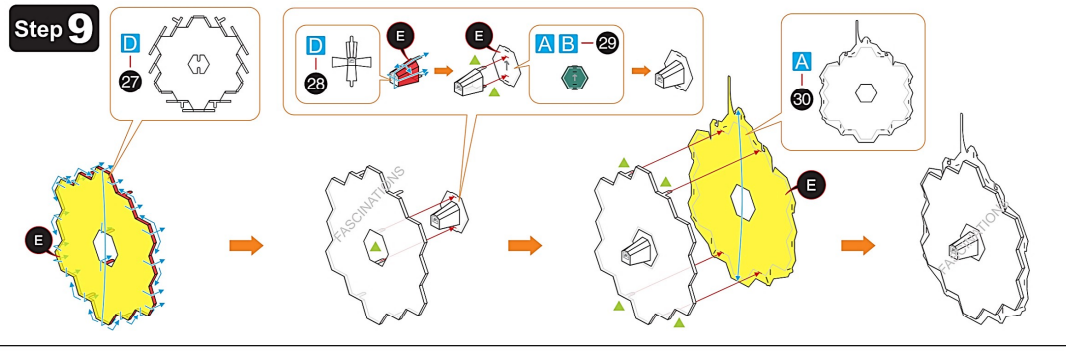
Step 7



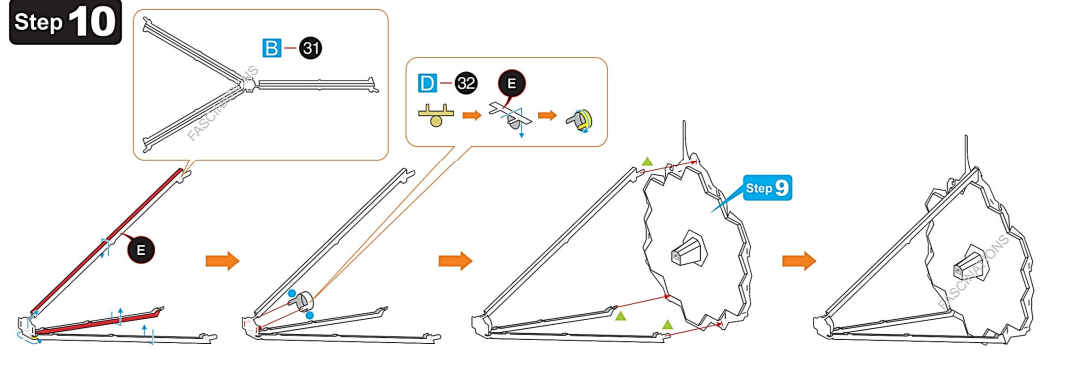
Step 8



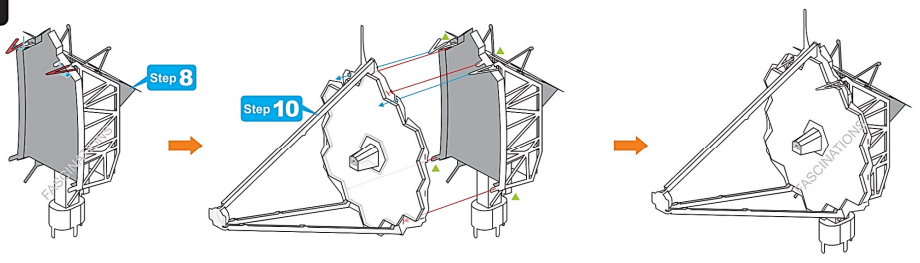
Step 9



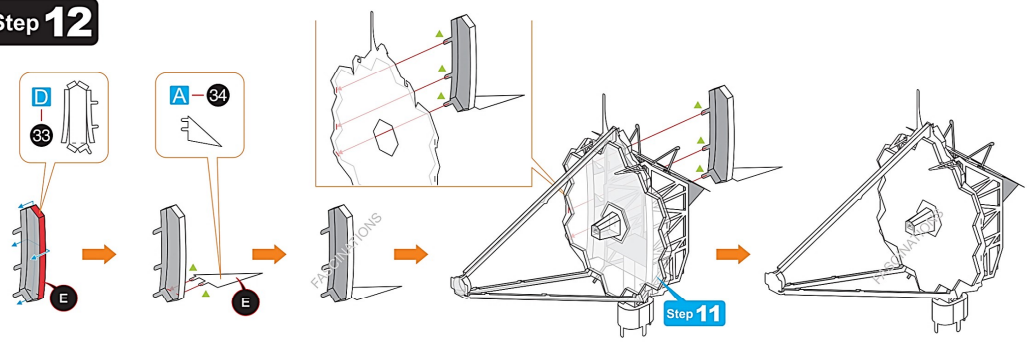
Step 10



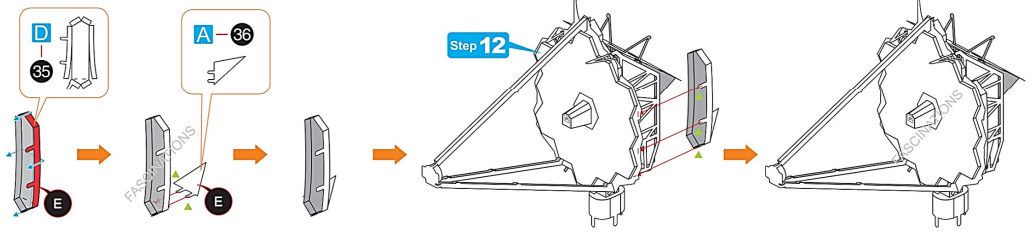
Step 11



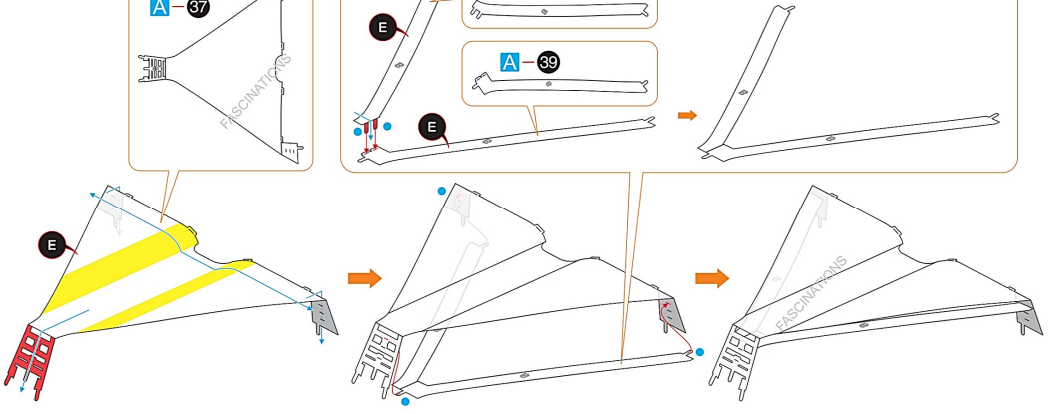
Step 12



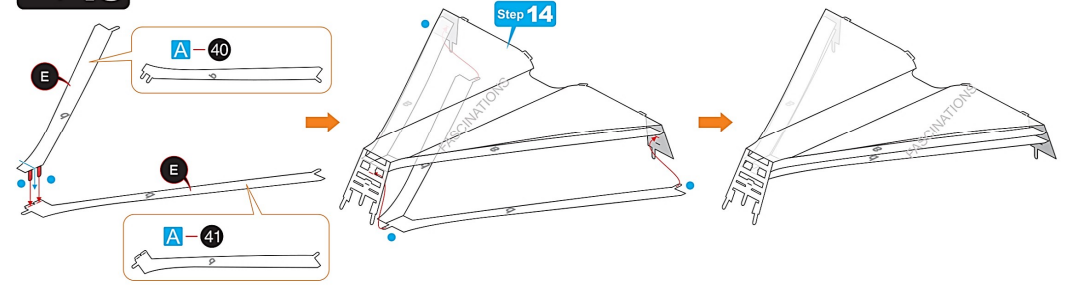
Step 13



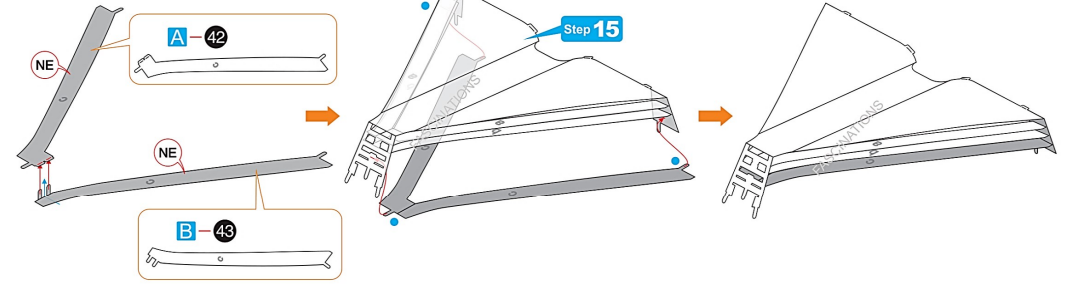
Step 14



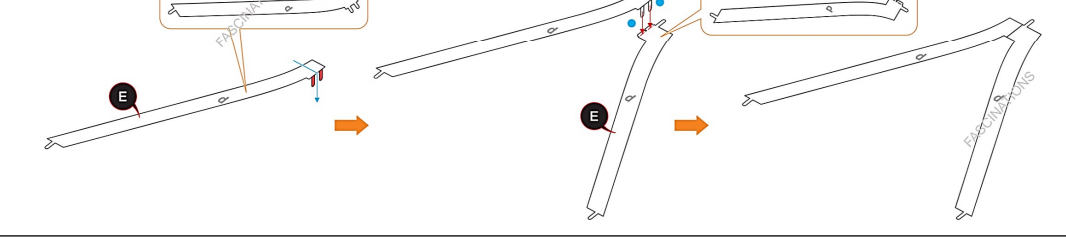
Step 15



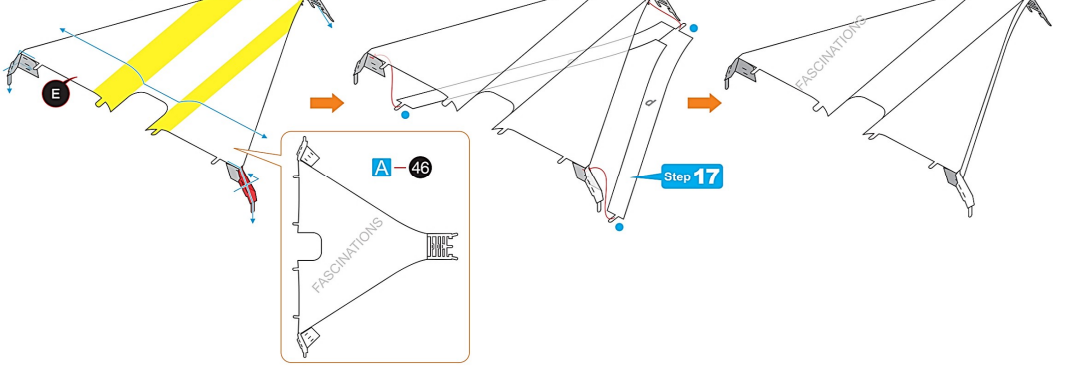
Step 16



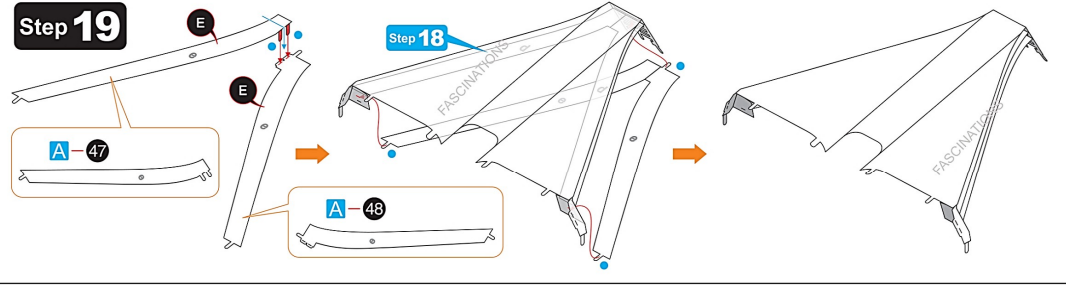
Step 17



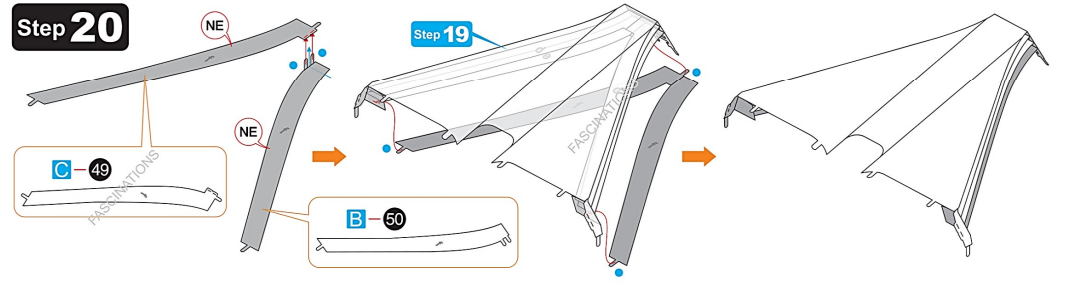
Step 18



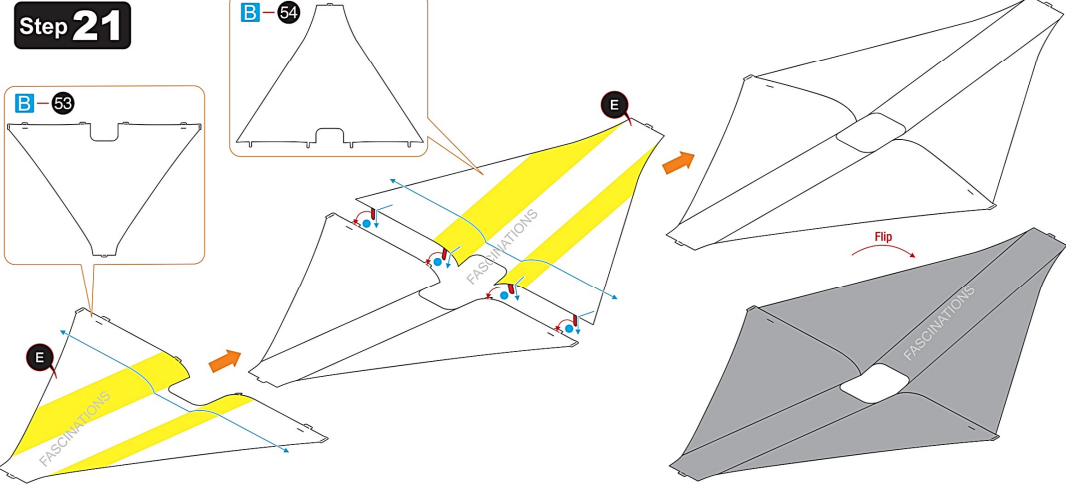
Step 19



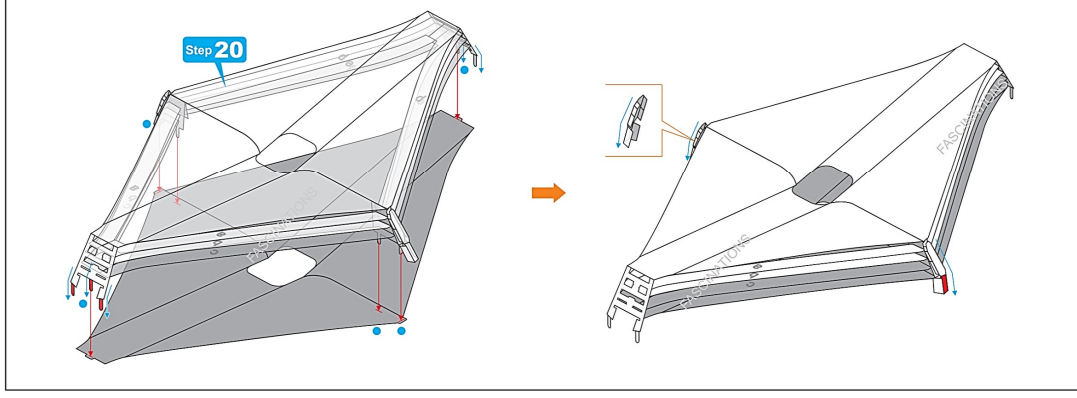
Step 20



Step 21



Step 20



Step 22

