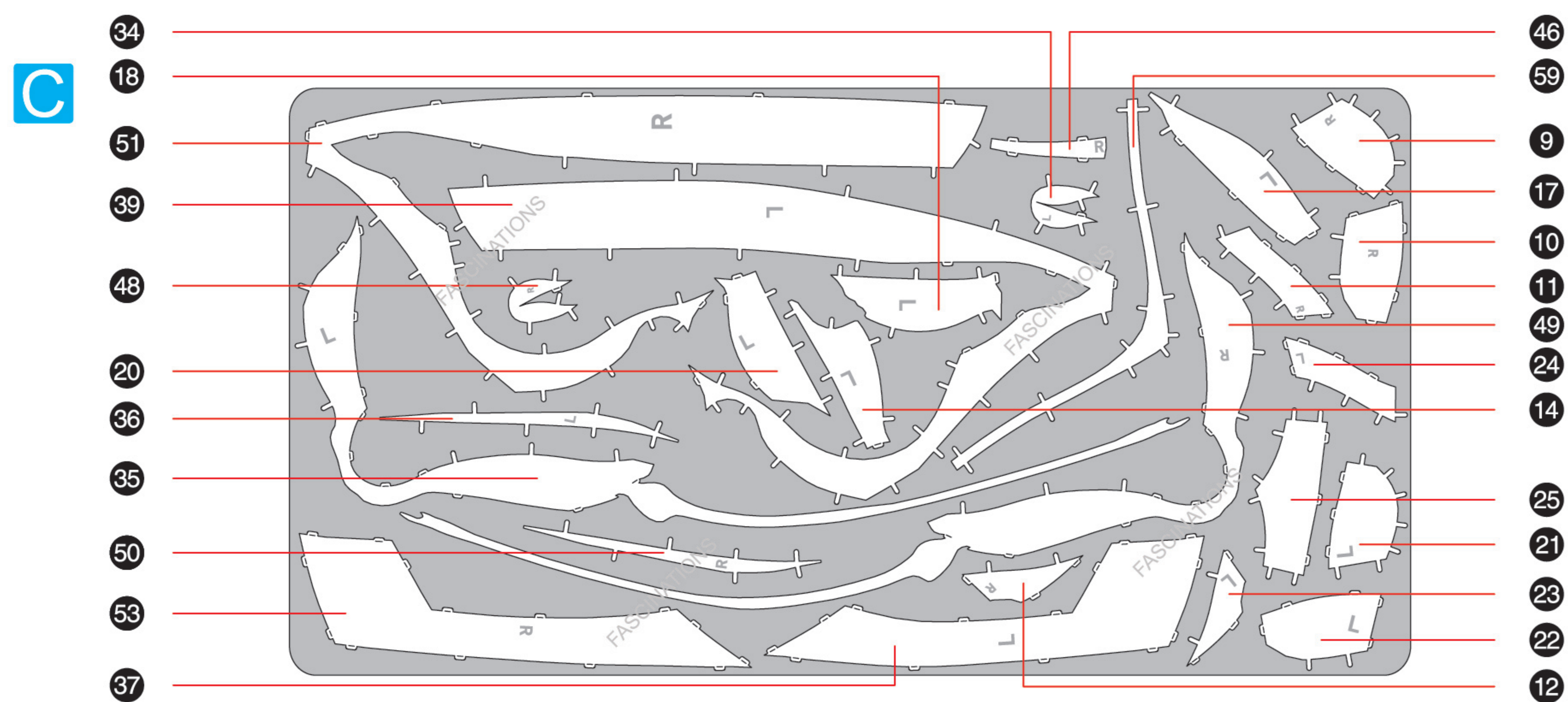
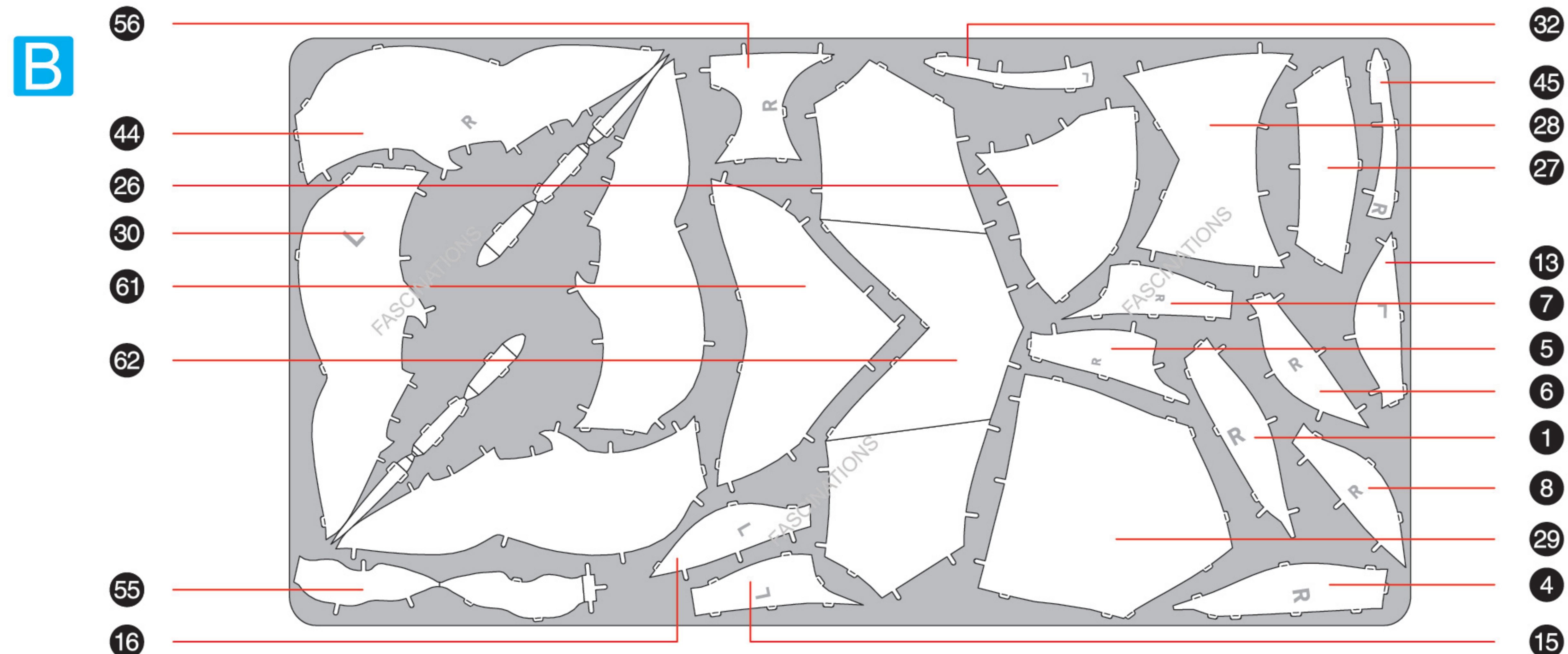
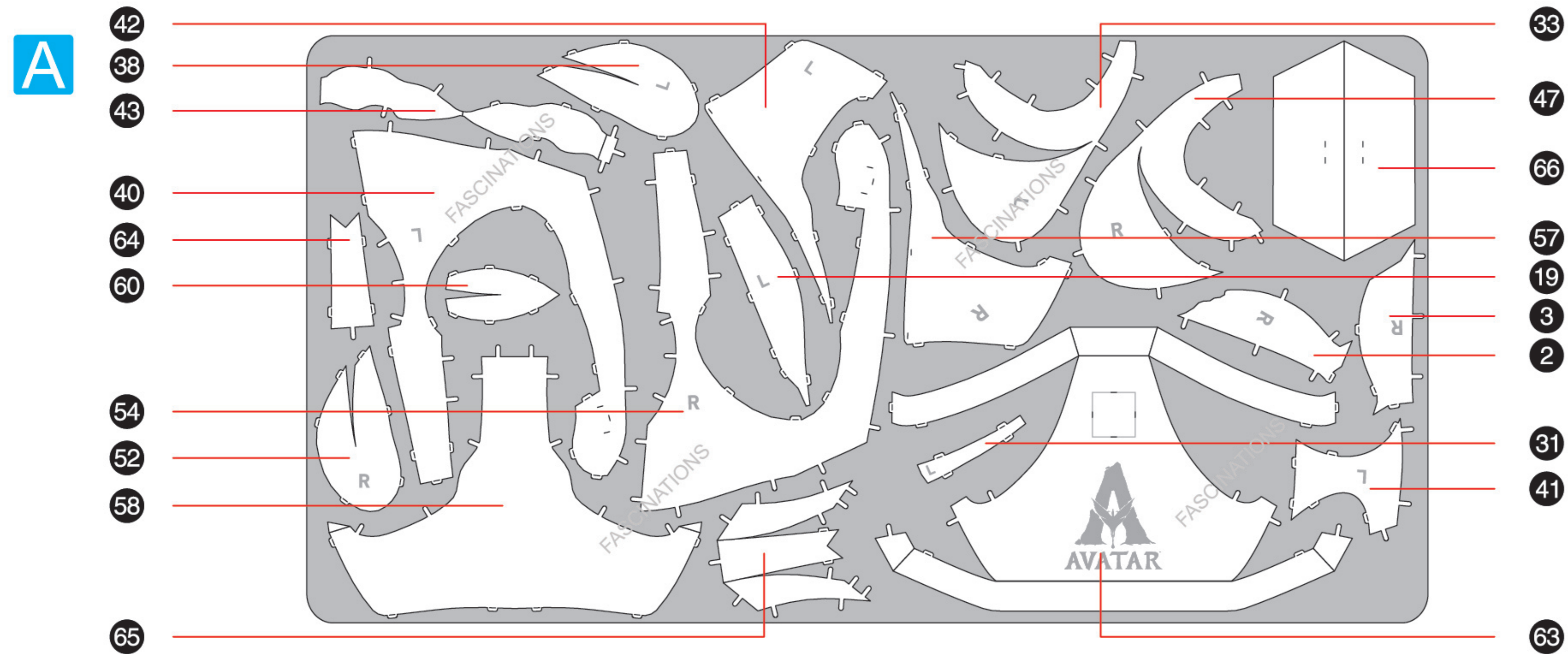


METAL SHEETS

Parts with same color are duplicates



Metal Earth

360° view



It is highly recommended that you visit www.metalearth.com/360/ICX249 to see the completed model before assembling your own



Premium Series

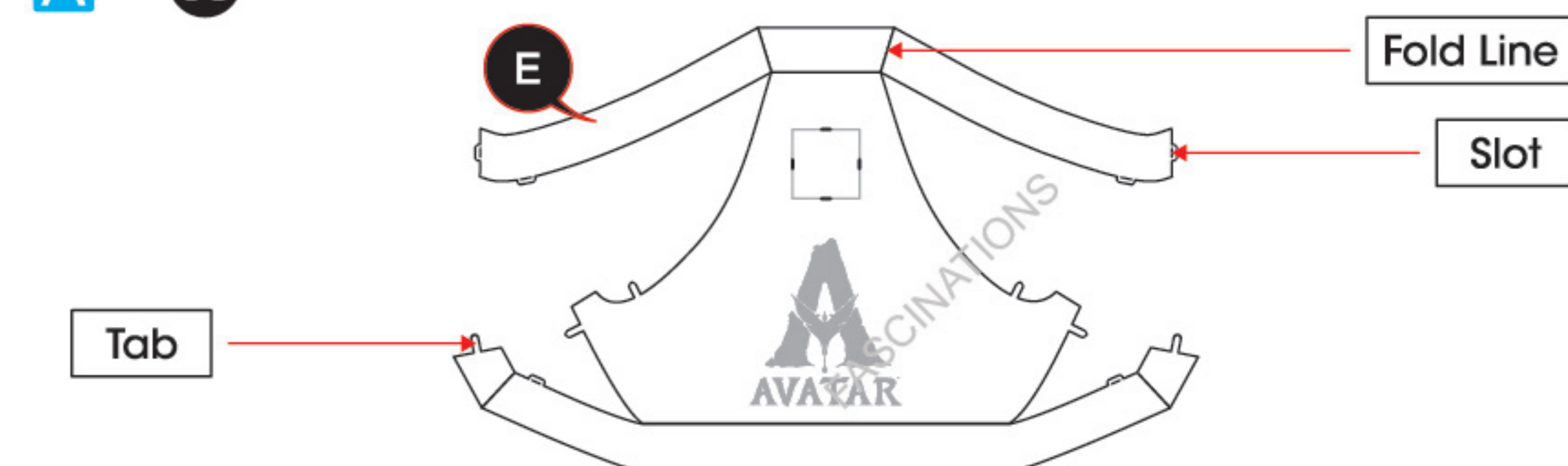
ICX249

TULKUN



TO CREATE THE BEST CONNECTIONS

A-63



Legends:

- Engraved/ Color side
- Non - engraved/ Silver side
- Attention point
- Insert tab and bend 90 degrees
- Insert tab and twist 90 degrees

Assembly tip:

If needed, slightly twist tabs to hold parts together then untwist and bend them down for a nice finish.

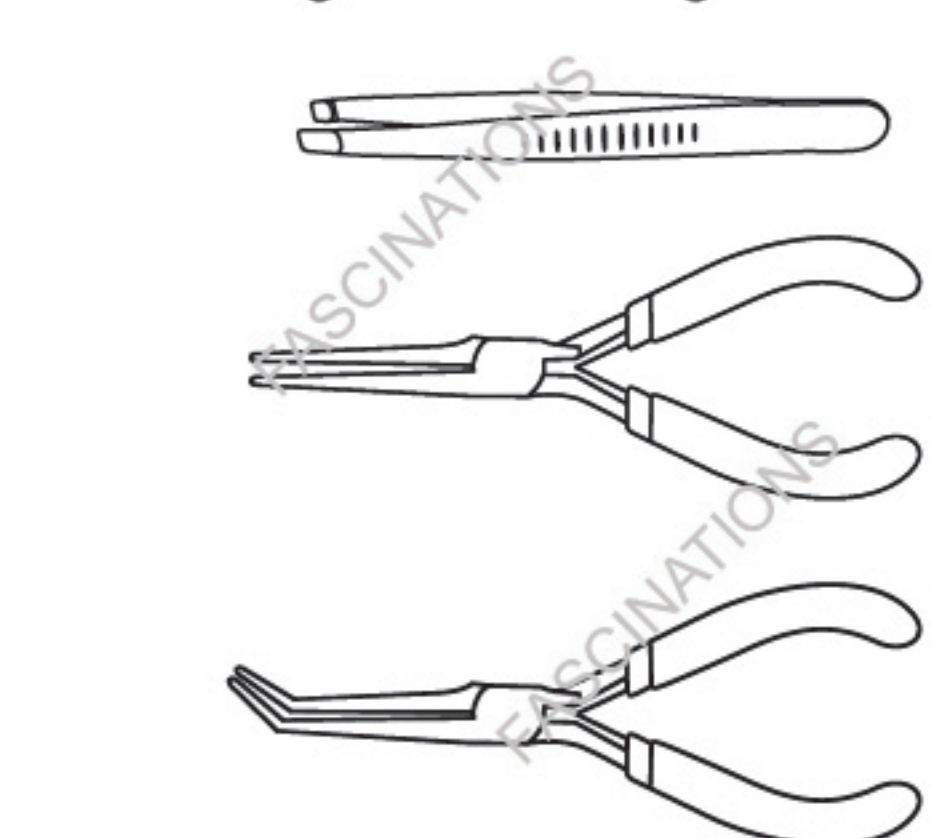
- Yellow areas should be curled
- Red areas should be folded

Recommended tools:

- Wire cutters: helpful for taking parts from the metal sheets.

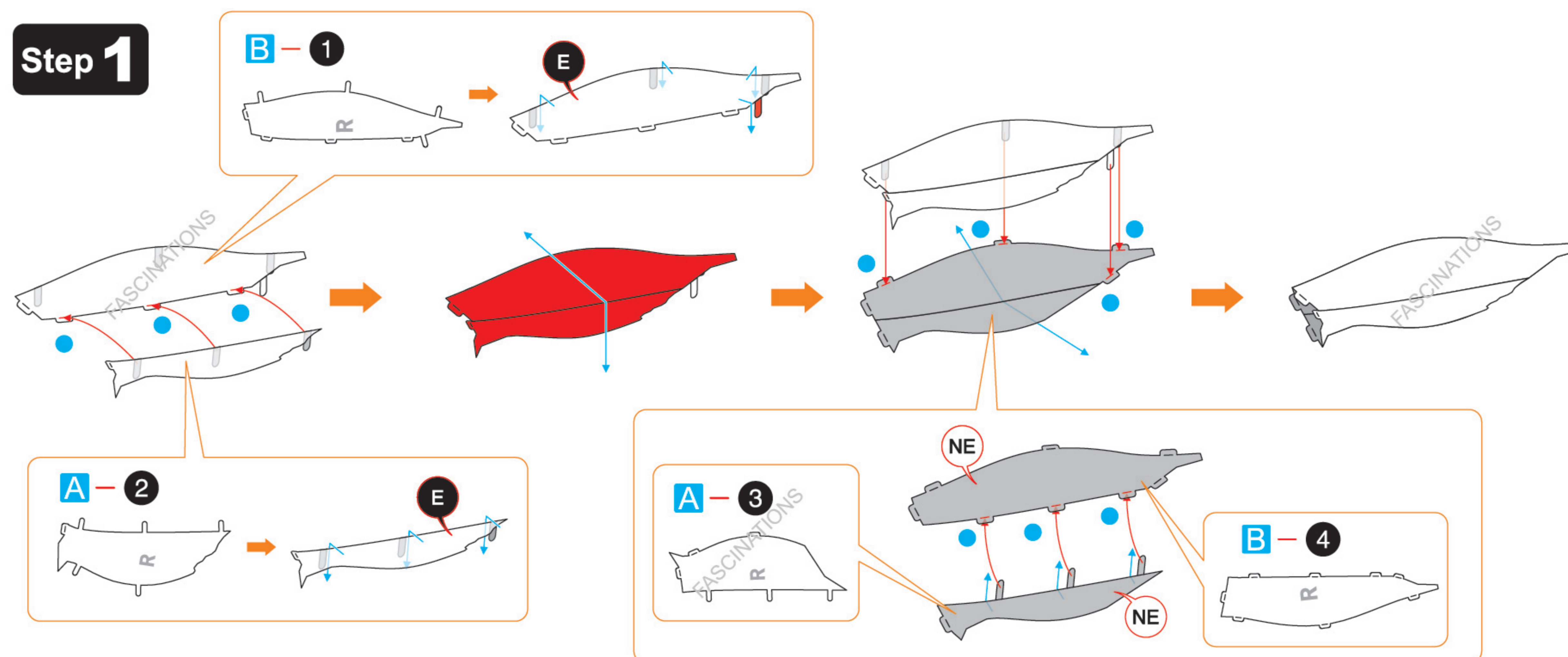


- Tweezers or needle nose pliers: helpful for folding parts, bending and twisting tabs.



ASSEMBLY STEPS

Step 1



In order to avoid possible injury from sharp edges, please carefully discard the metal sheets after parts have been removed

Step 2

5

B-6

B-7

B-8

E

NE

Step 3

Connect the tabs illustrated in red first

Step 1

Step 2

C-9

C-10

C-11

C-12

E

NE

C-12

NE

Step 4

B-13

B-14

B-15

B-16

E

NE

Step 5

C-17

C-18

A-19

C-20

E

NE

Step 6

Step 4

Step 5

C-21

C-22

C-23

C-24

E

NE

Connect the tabs illustrated in red first

C-25

B-26

NE

E

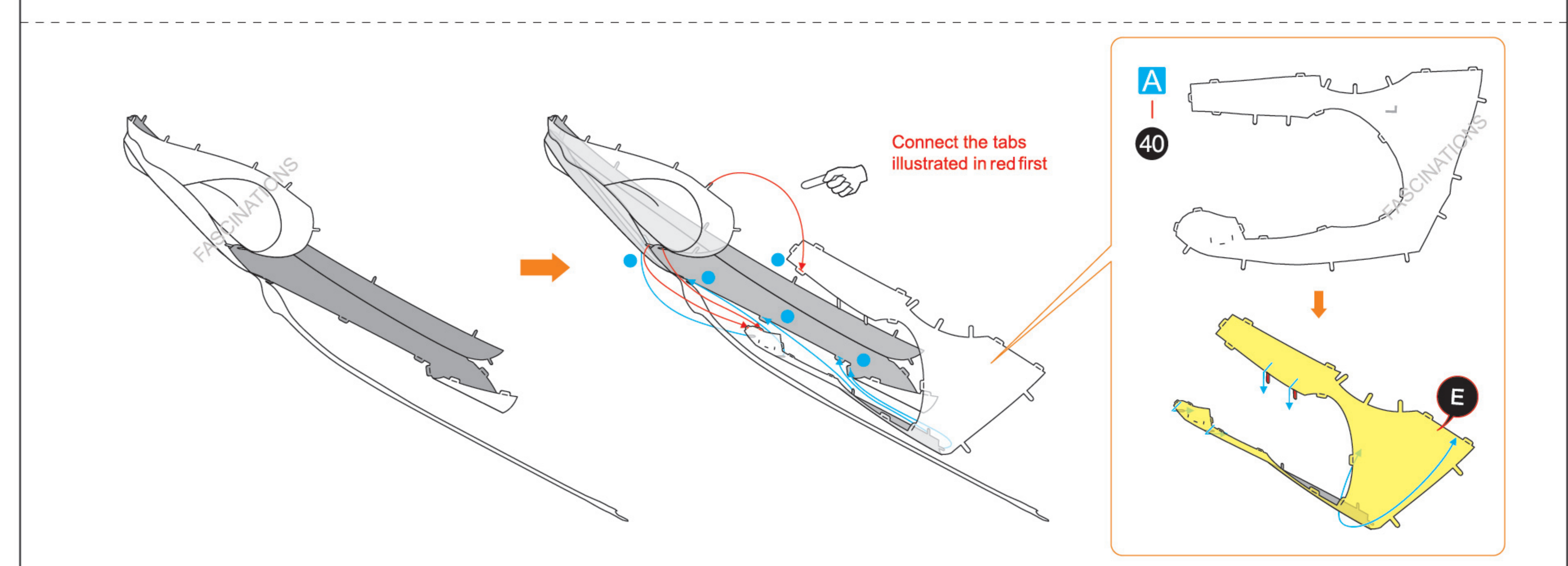
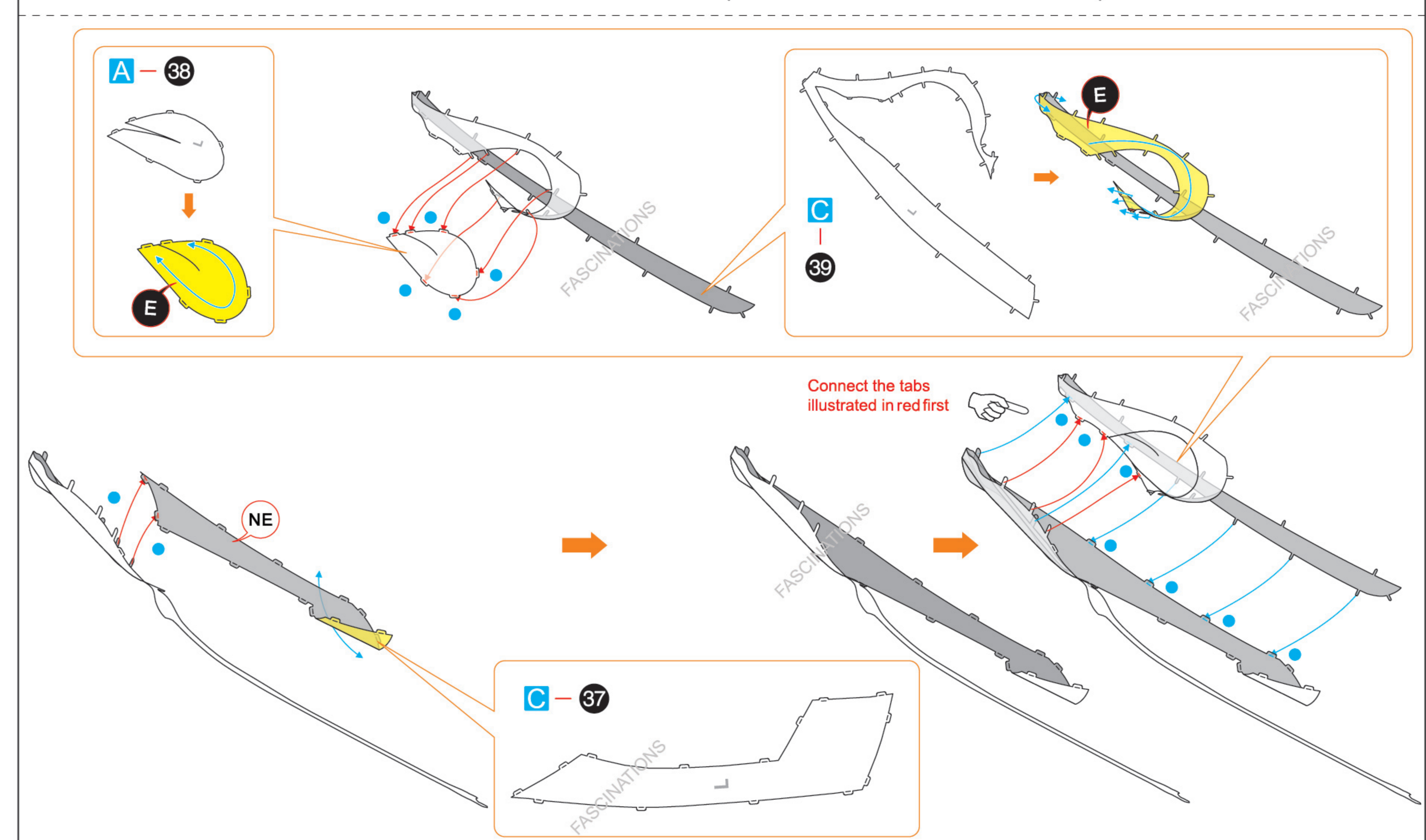
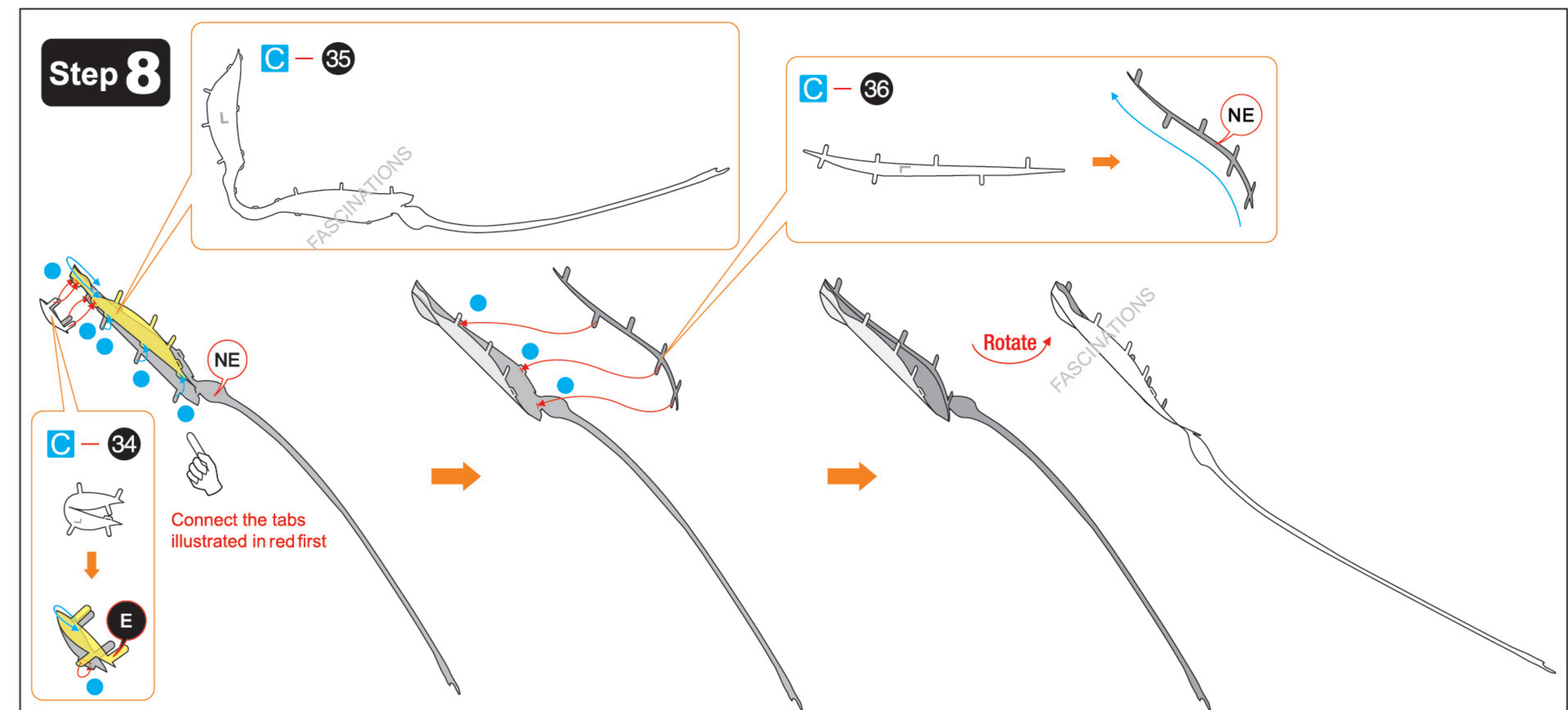
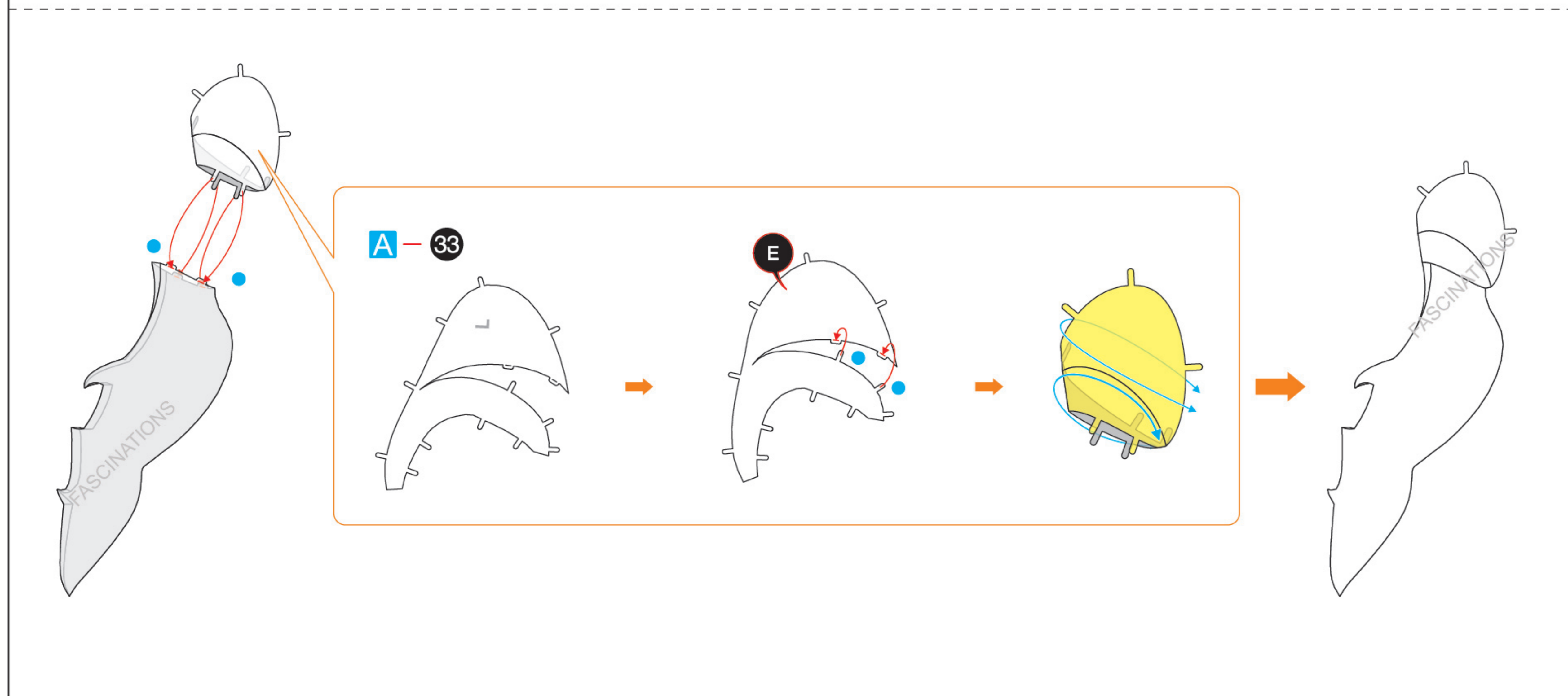
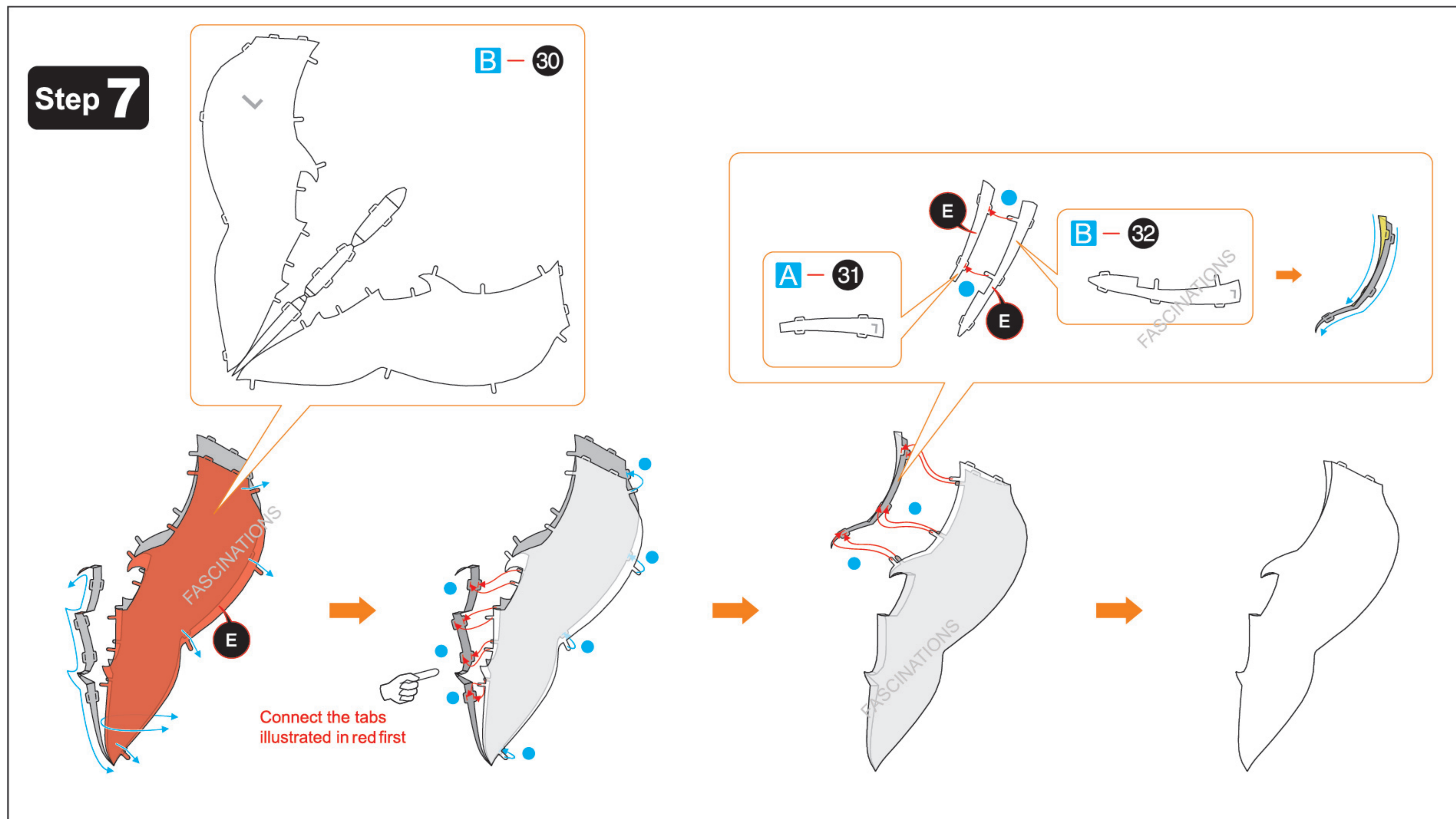
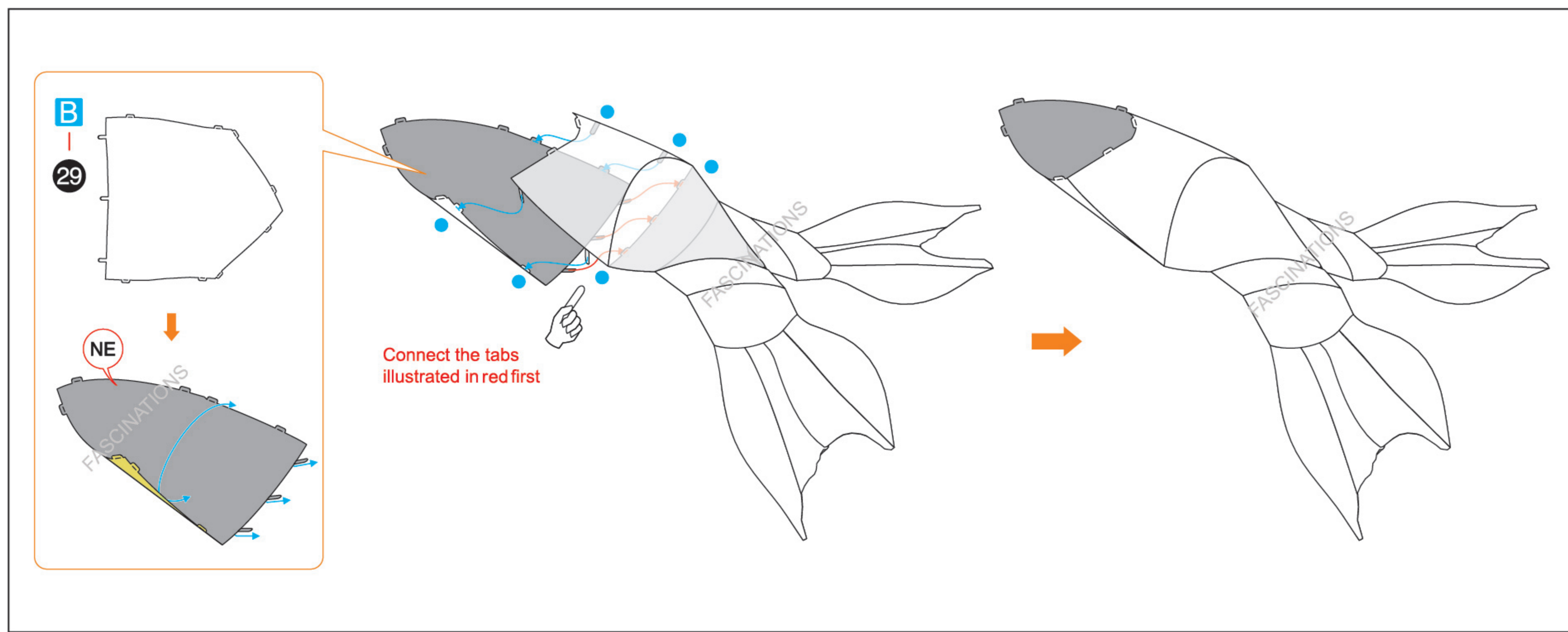
Step 3

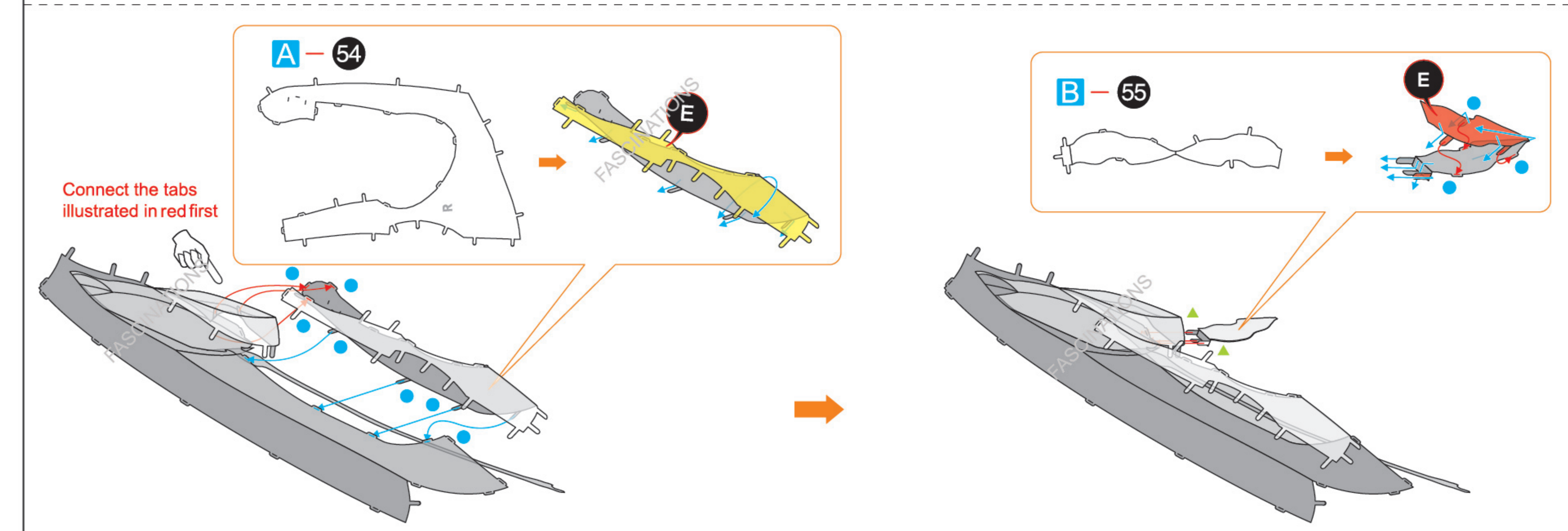
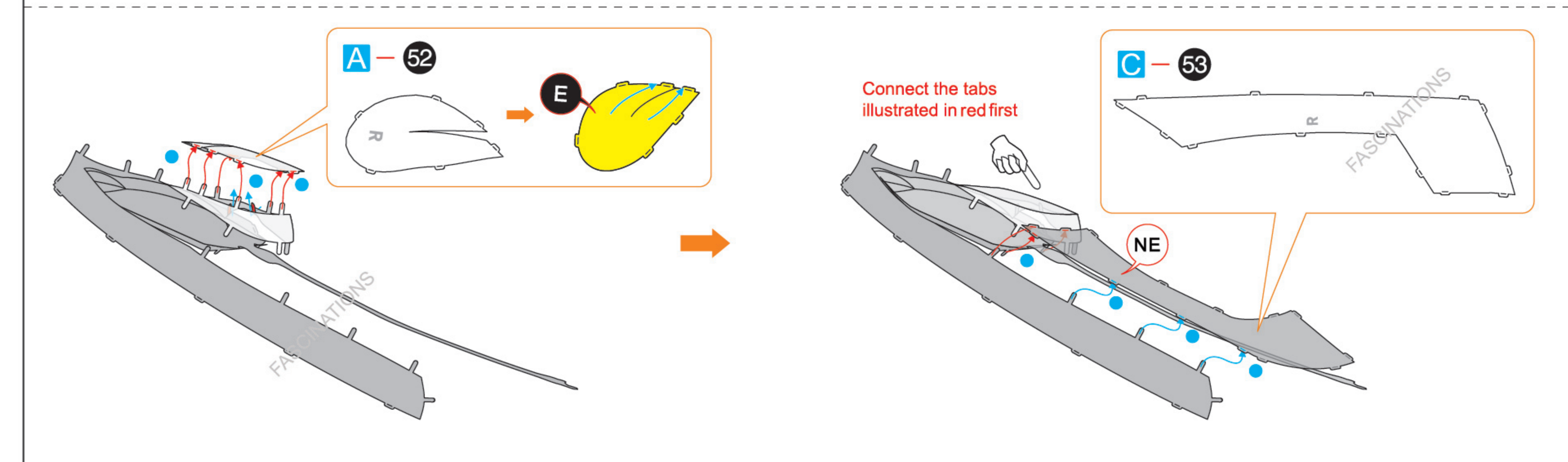
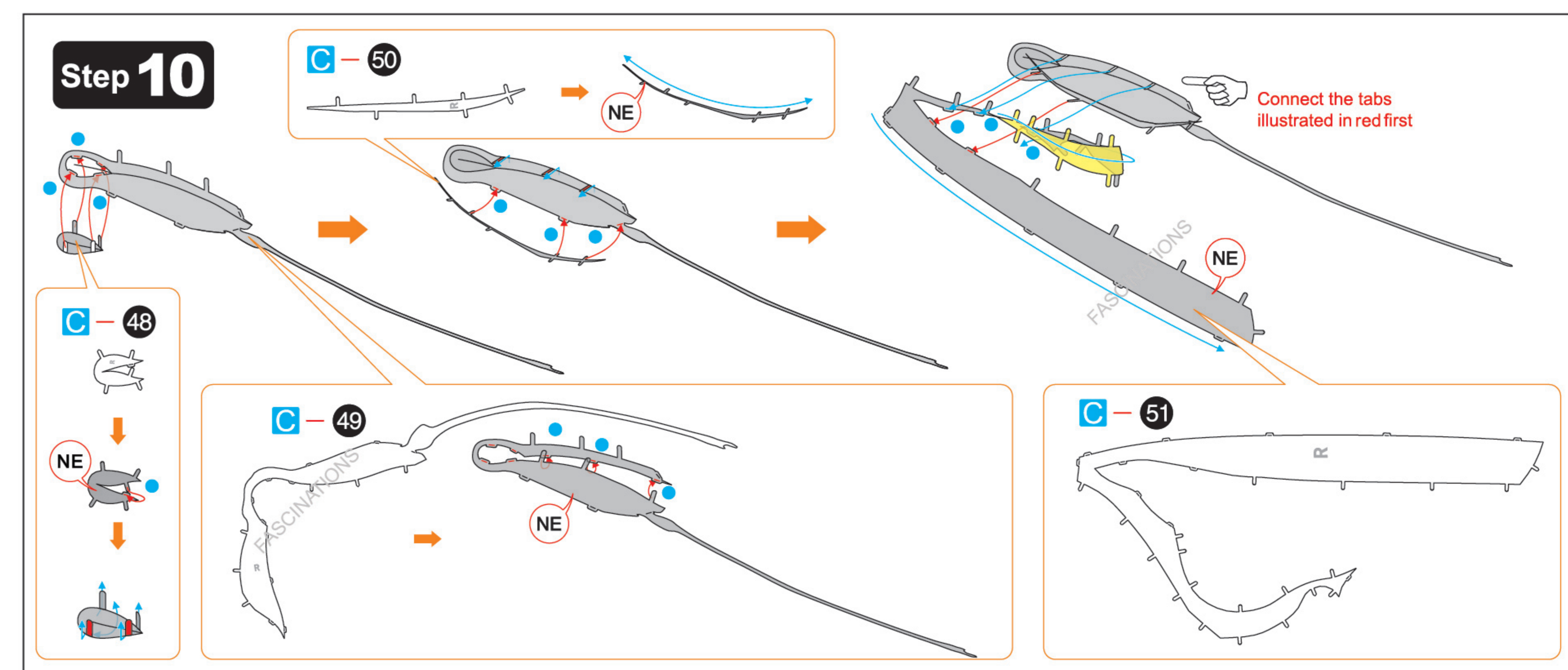
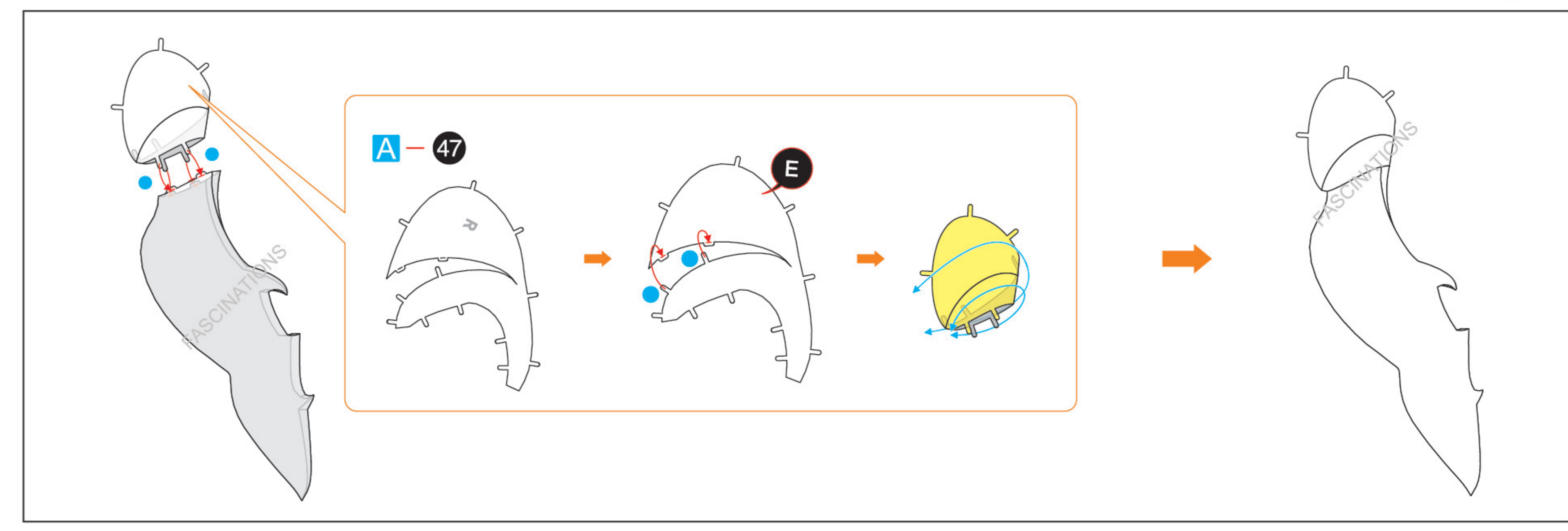
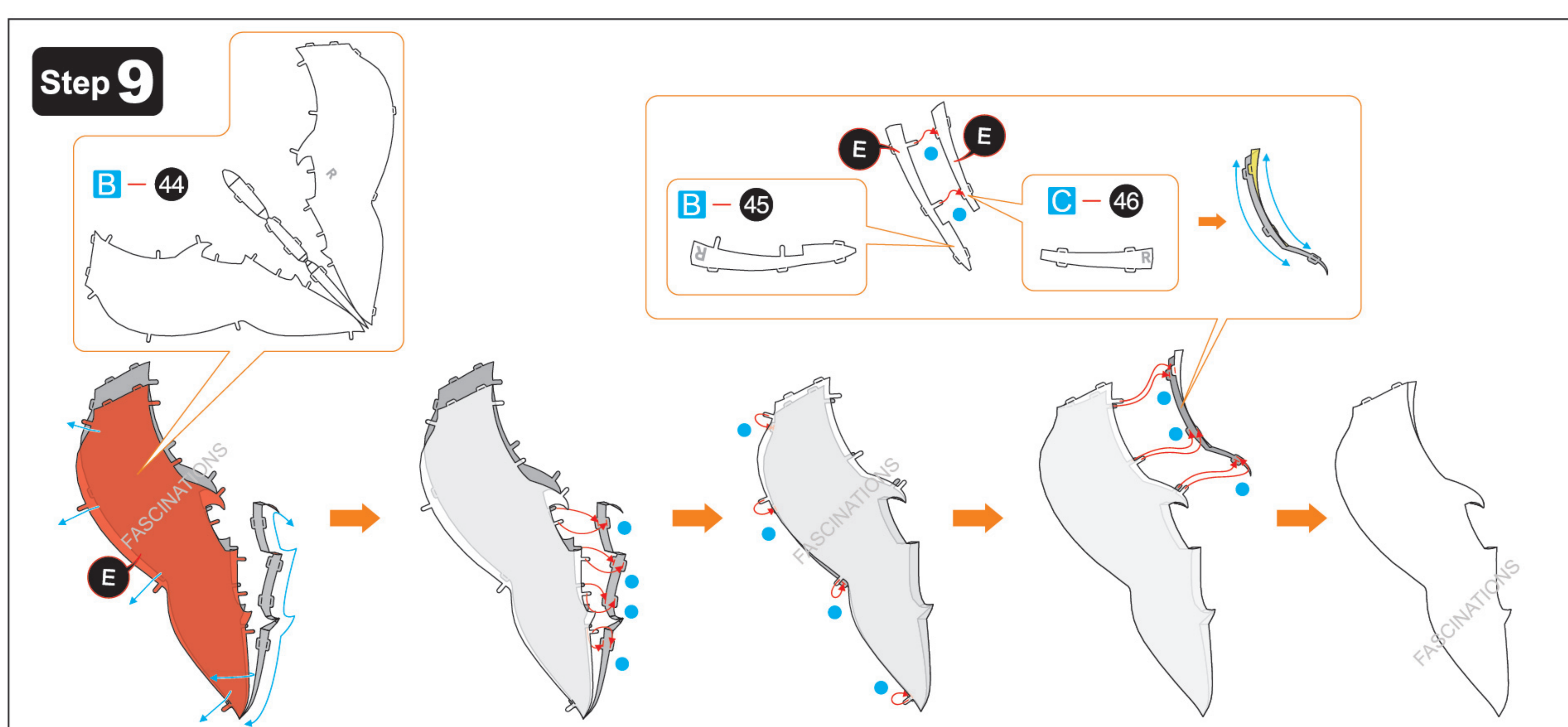
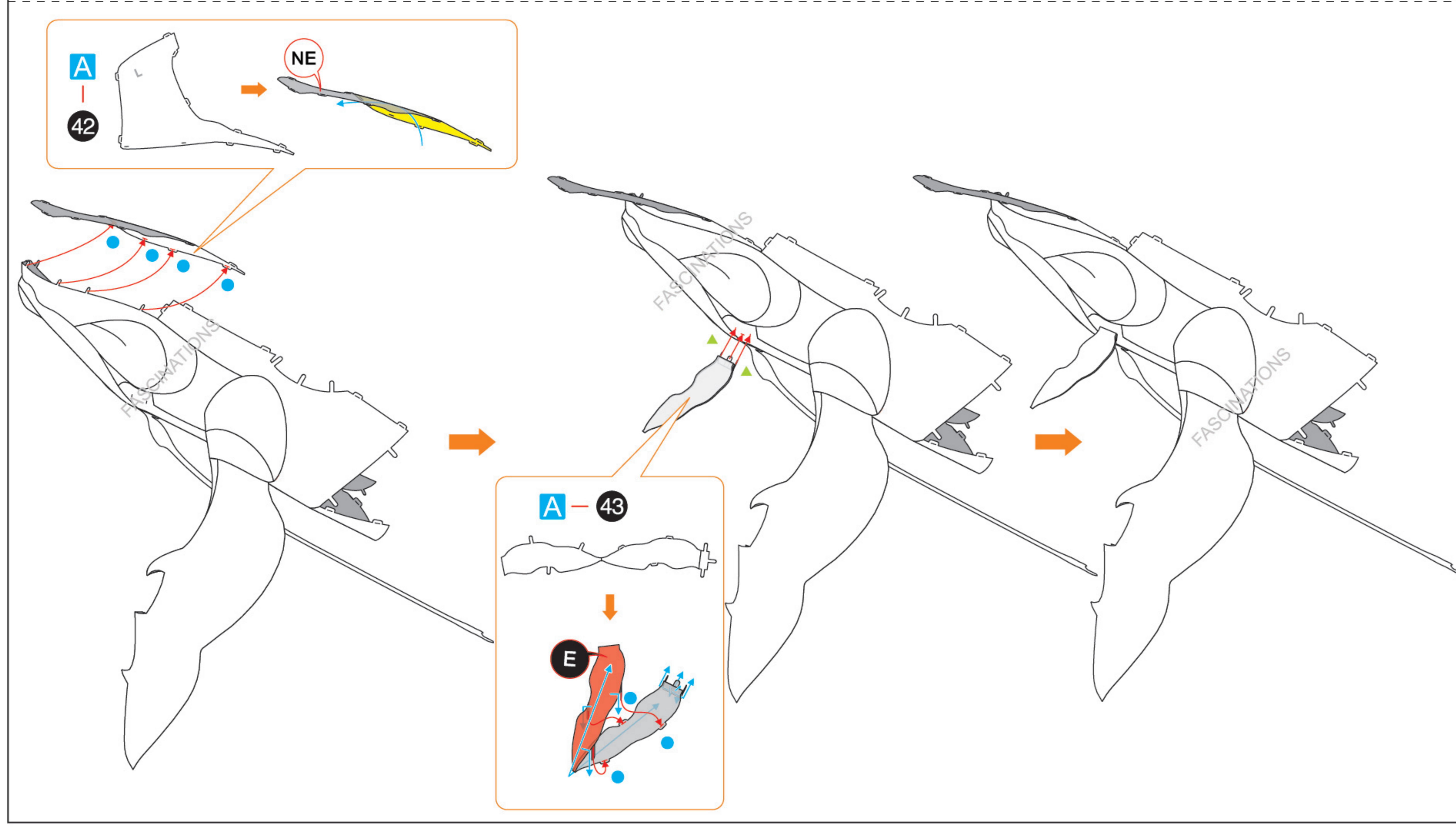
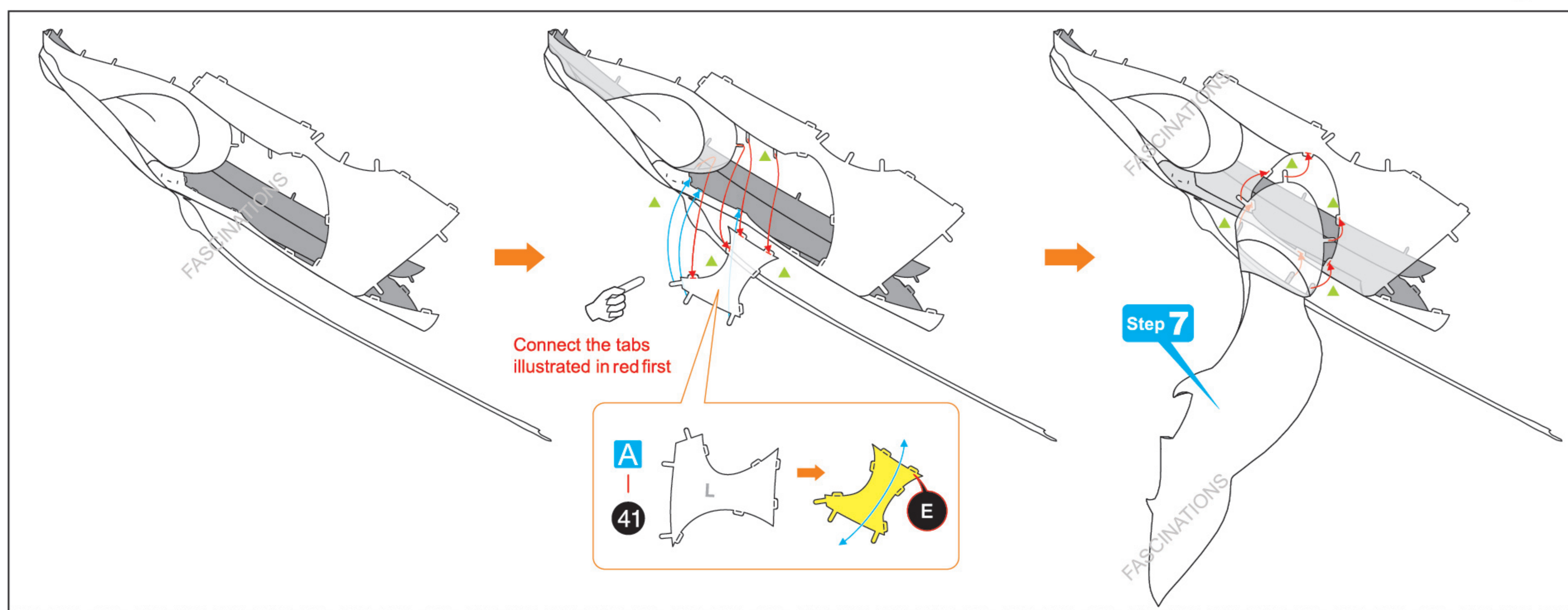
B-27

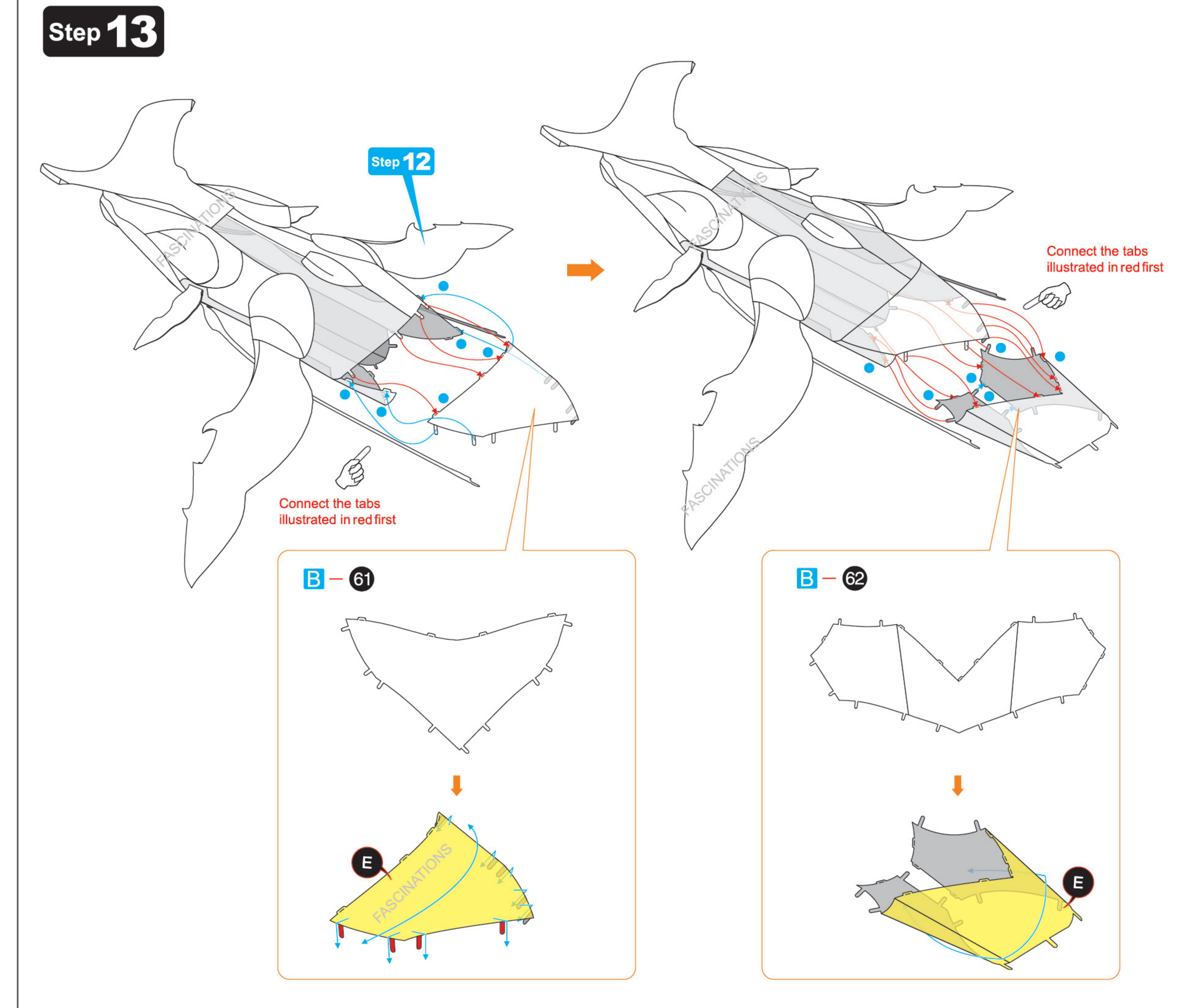
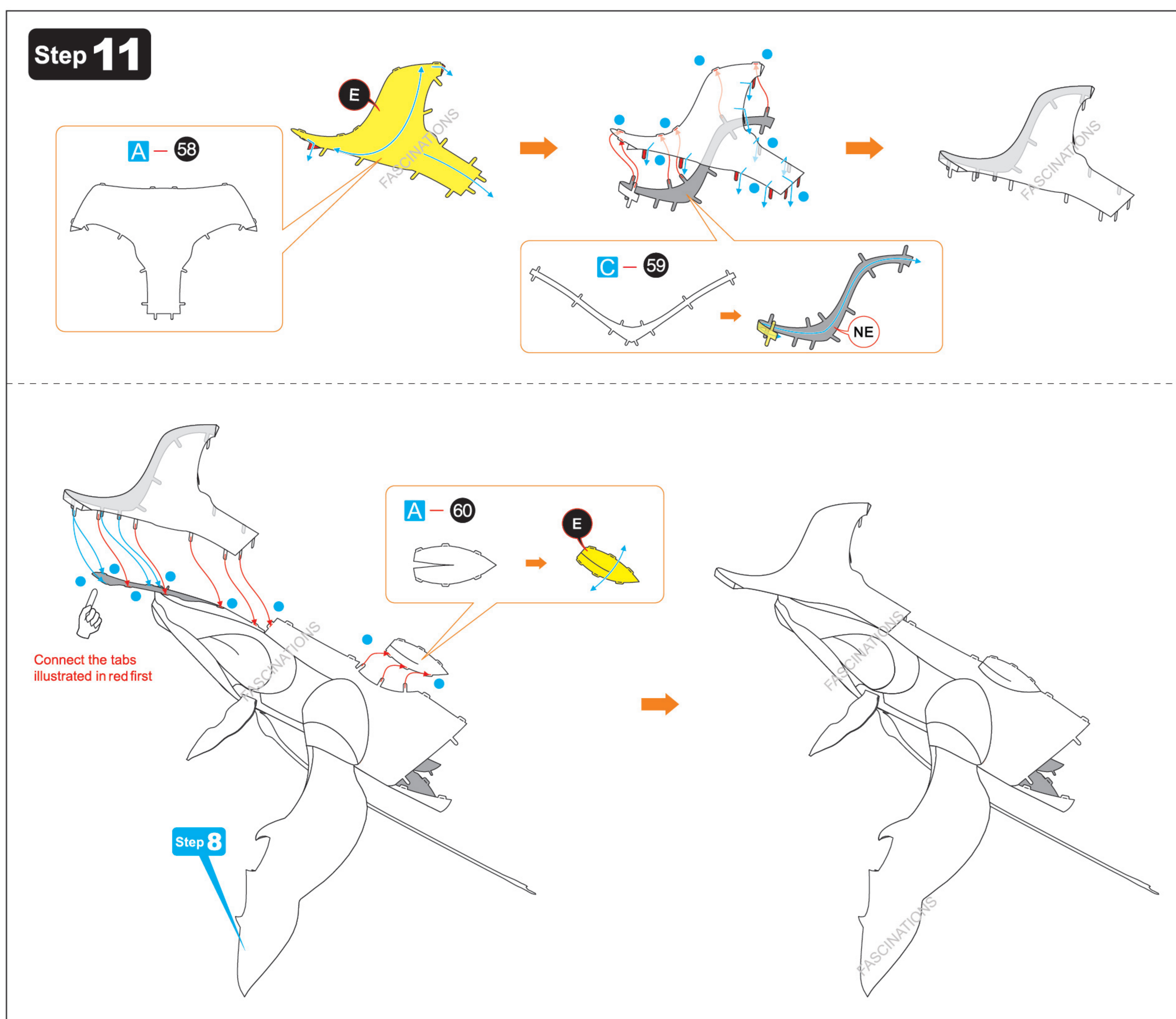
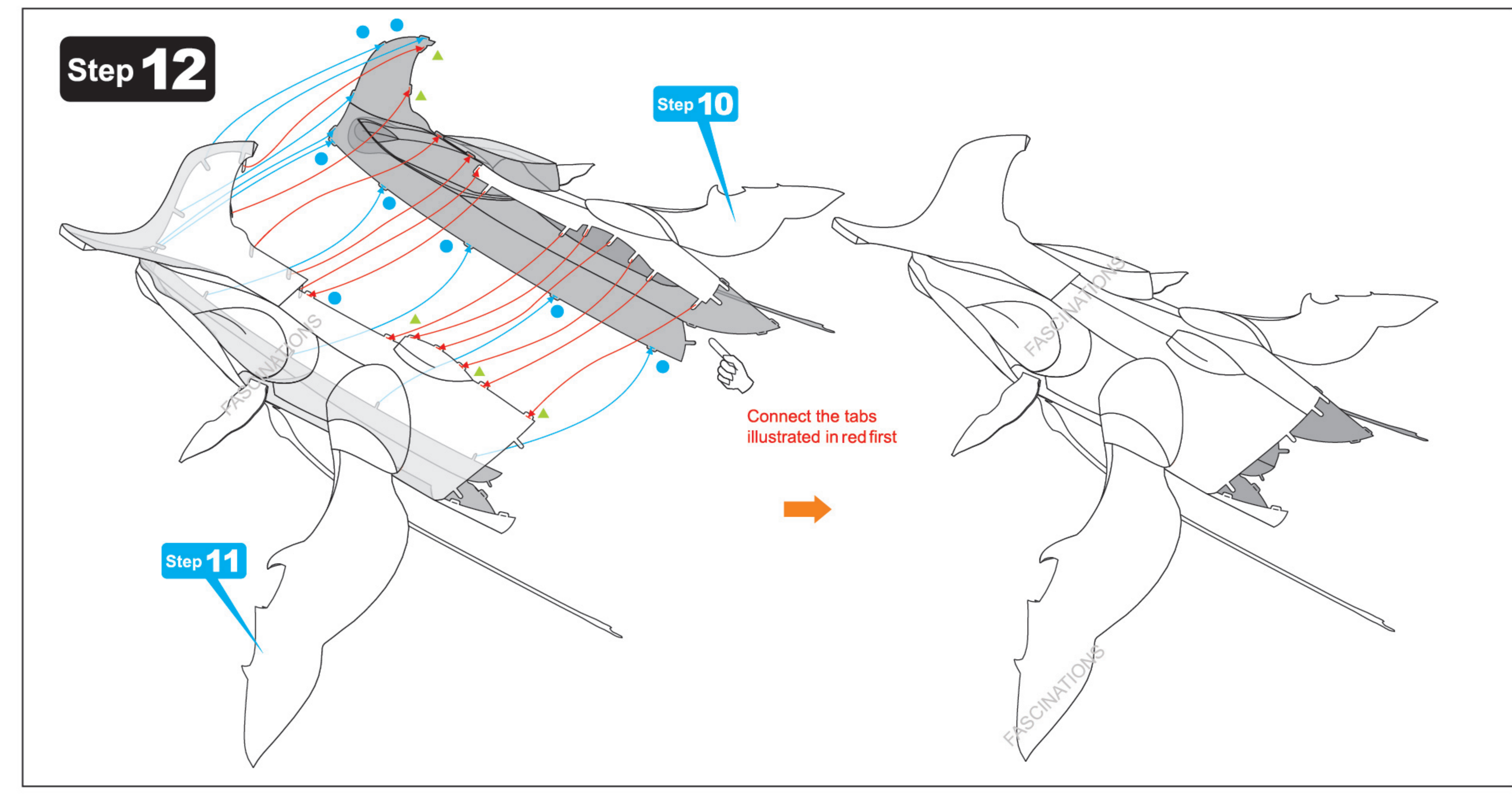
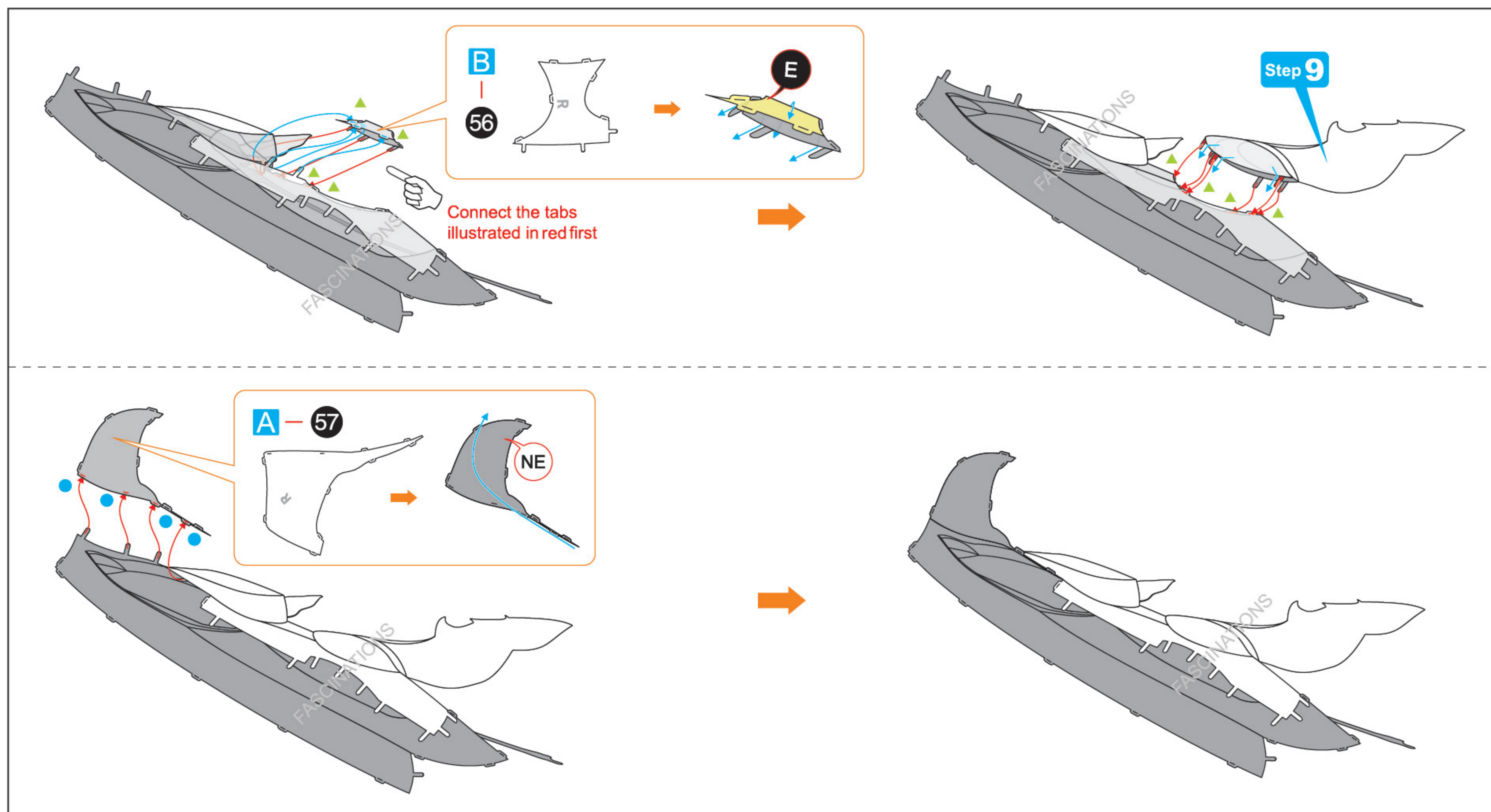
B-28

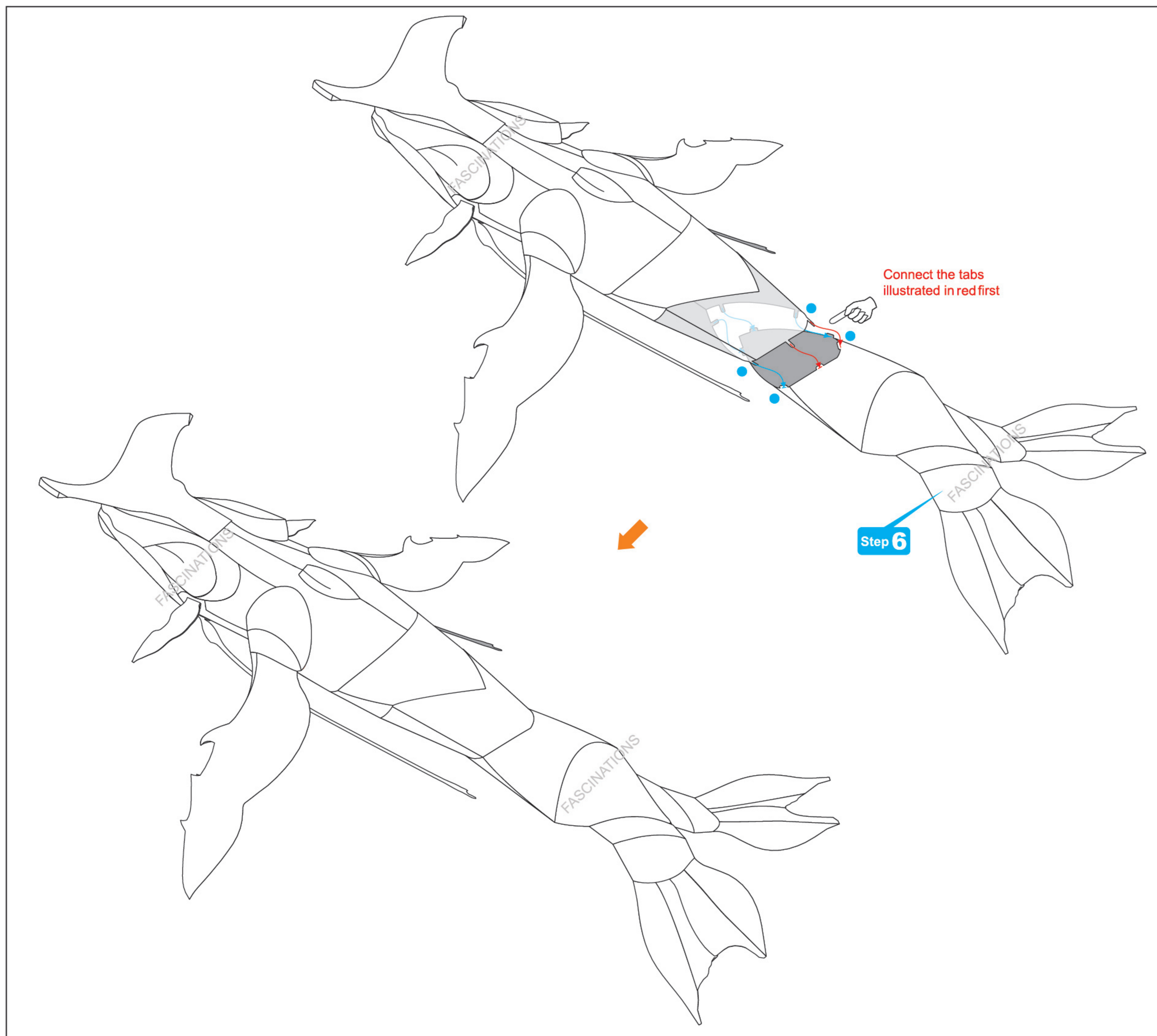
NE

E

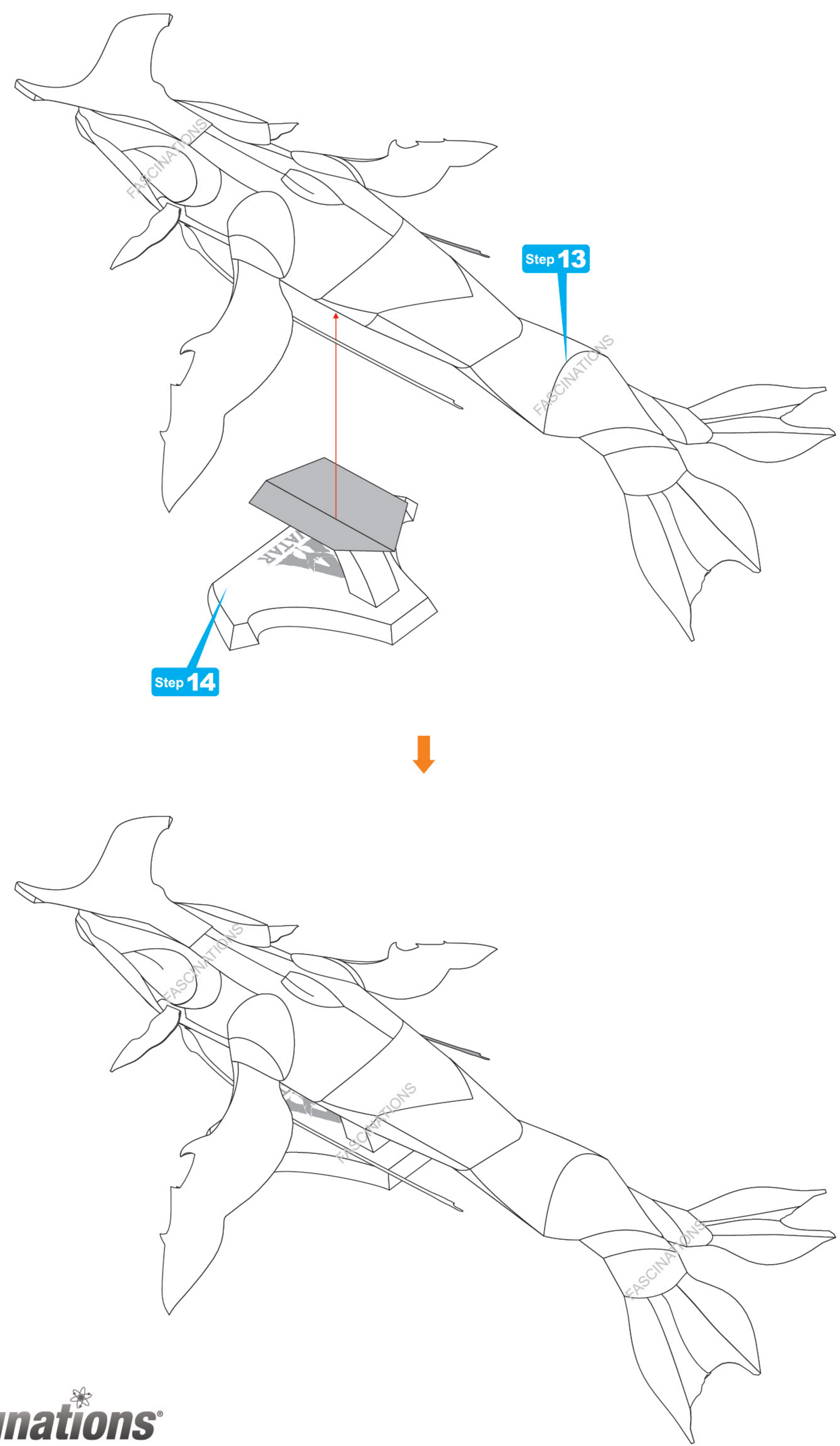








Step 15



Step 14

