

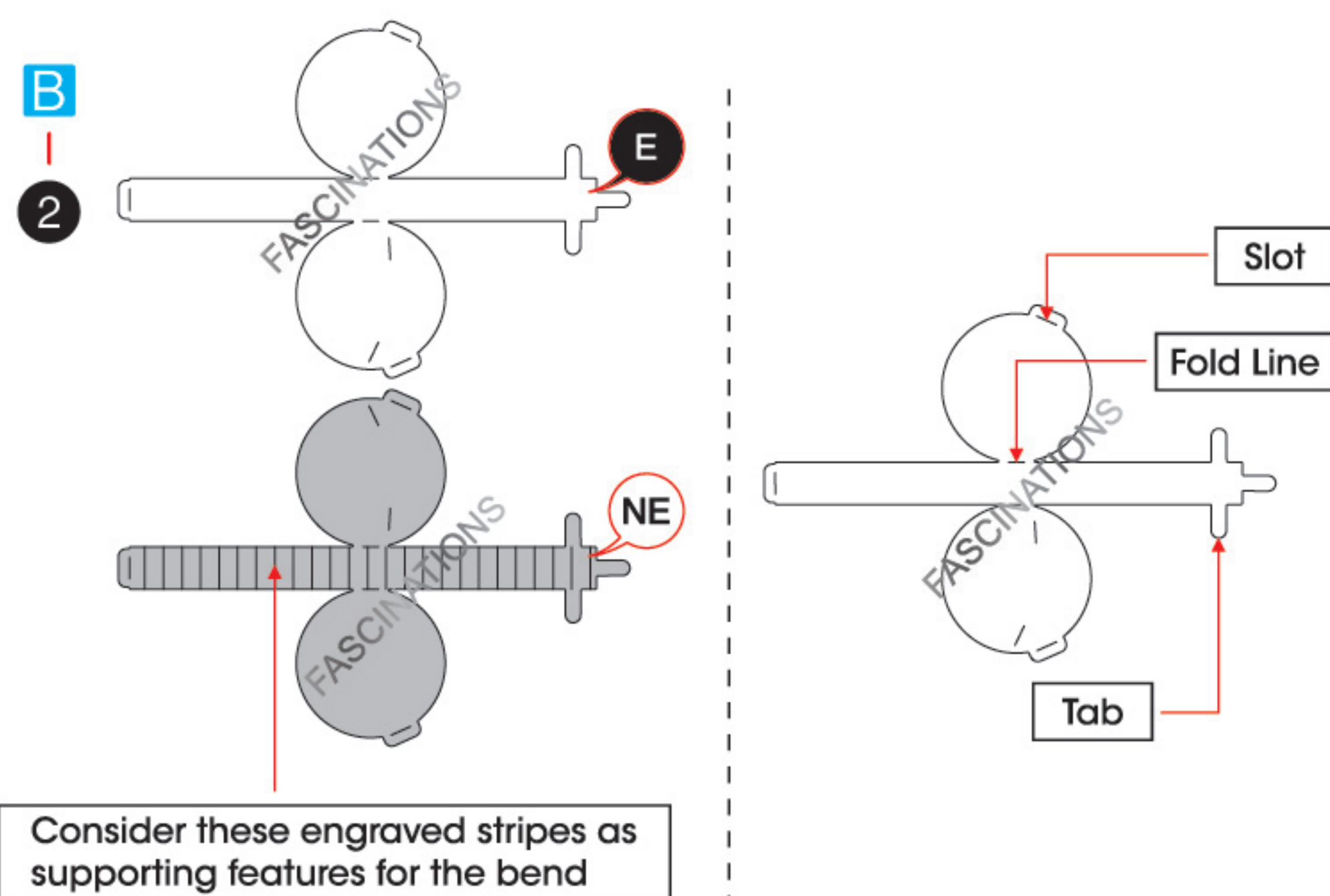
## SUPERMARINE SPITFIRE ME1005

360°  
view



It is highly recommended that you visit  
[www.metalearth.com/360/ME1005](http://www.metalearth.com/360/ME1005)  
to see the completed model before assembling your own

### TO CREATE THE BEST CONNECTIONS



#### Legends:

- E** Engraved/ Color side
- NE** Non - engraved/ Silver side
- Attention point
- Insert tab and bend 90 degrees
- Insert tab and twist 90 degrees

#### Assembly tip:

If needed, slightly twist tabs to hold parts together then untwist and bend them down for a nice finish.

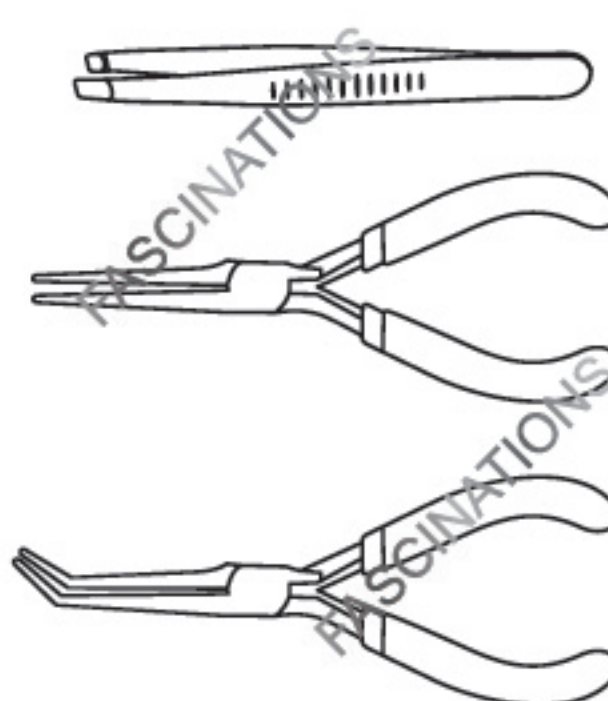
- Yellow areas should be curled
- Red areas should be folded

#### Recommended tools:

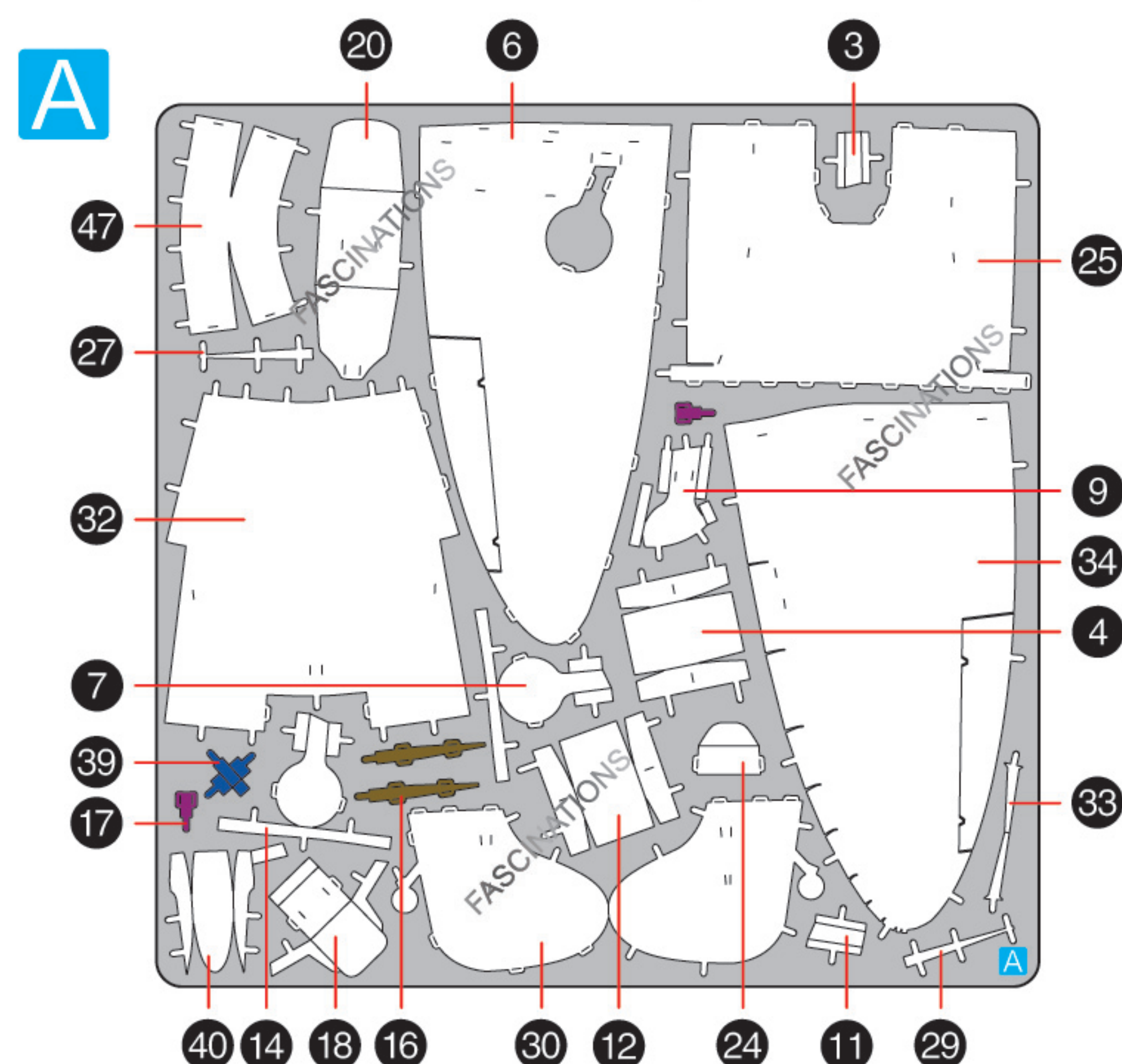
- Wire cutters: helpful for taking parts from the metal sheets.



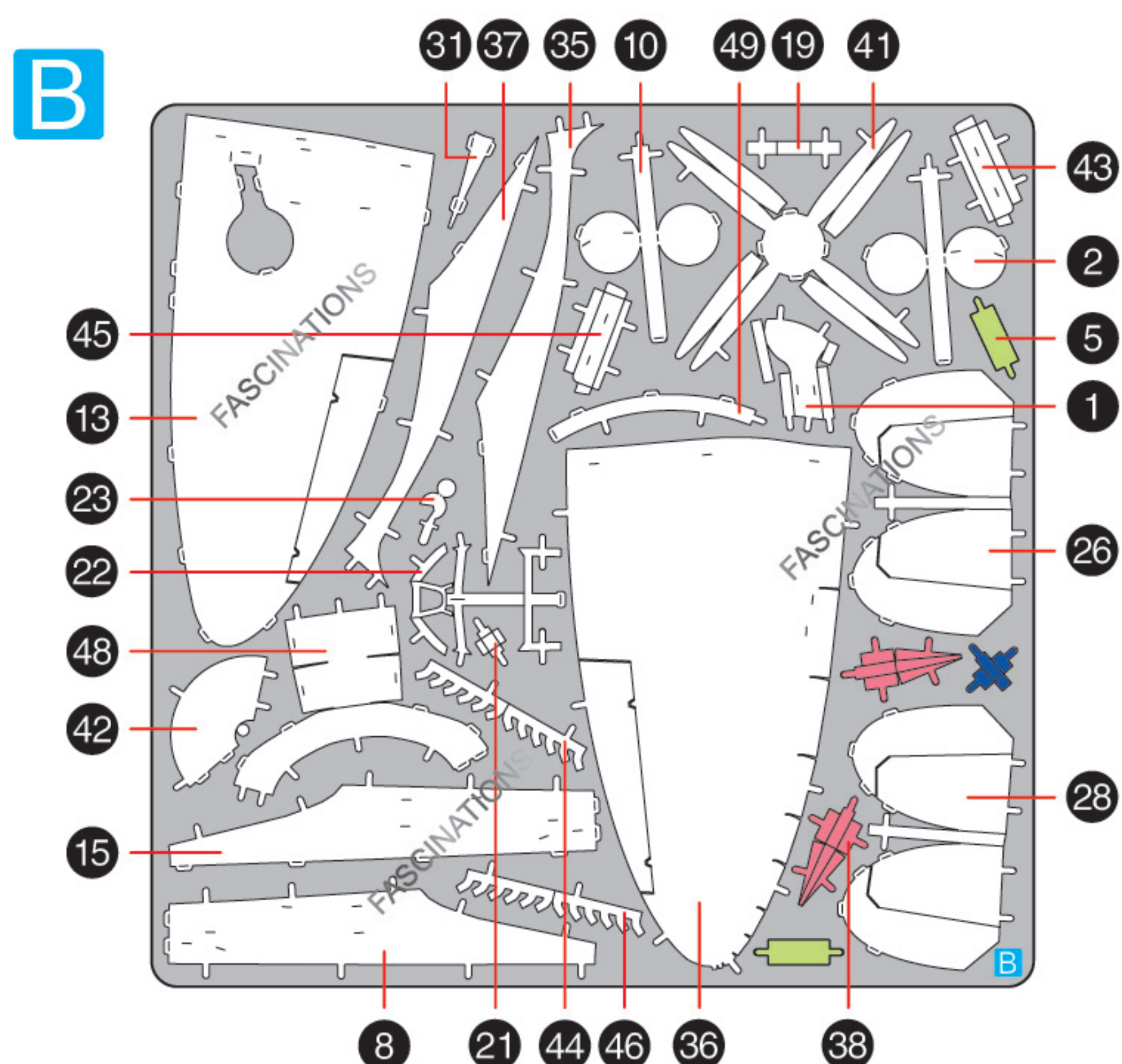
- Tweezers or needle nose pliers: helpful for folding parts, bending and twisting tabs.



### METAL SHEETS



### Parts with same color are duplicates

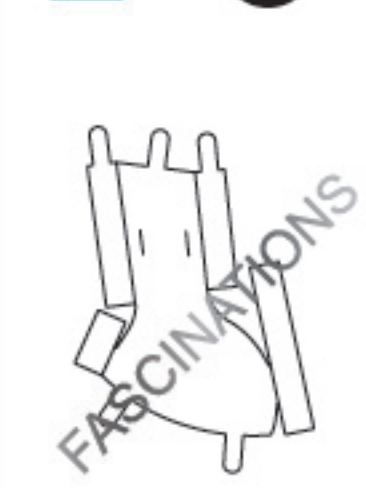


In order to avoid possible injury from sharp edges, please carefully discard the metal sheets after parts have been removed.

### ASSEMBLY FLOW CHART

#### Step 1

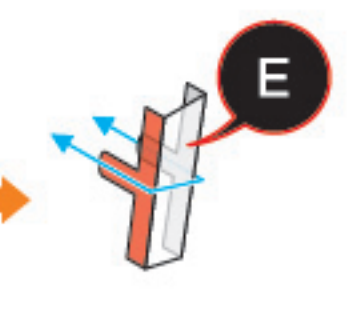
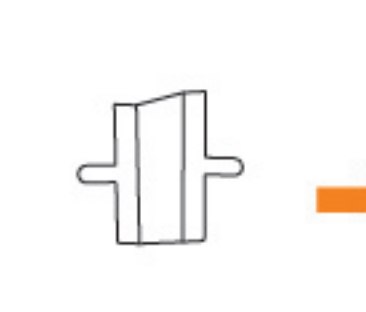
##### B - 1



##### A - 3

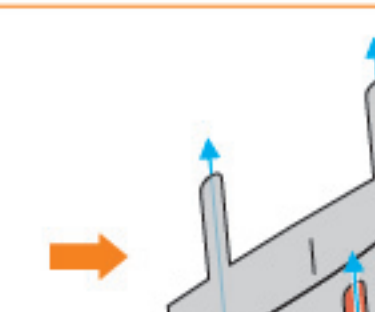
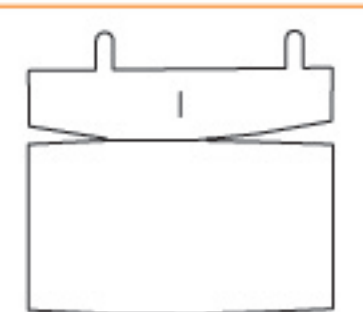


##### E

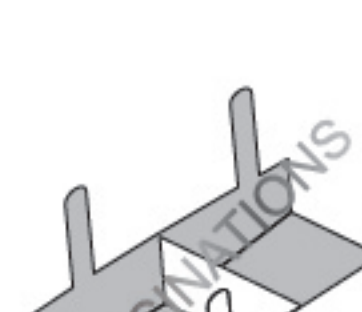
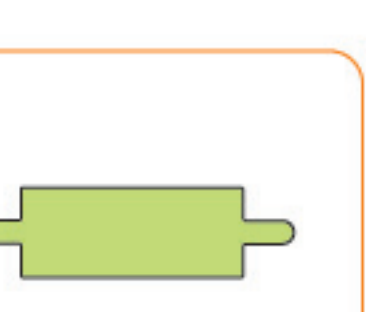
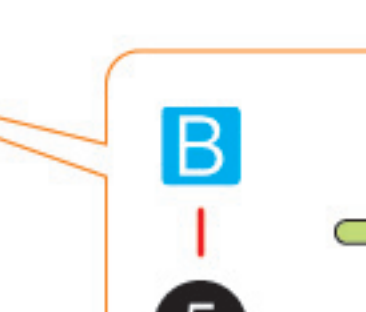
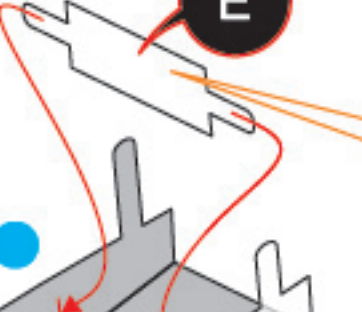


#### Step 2

##### A - 4

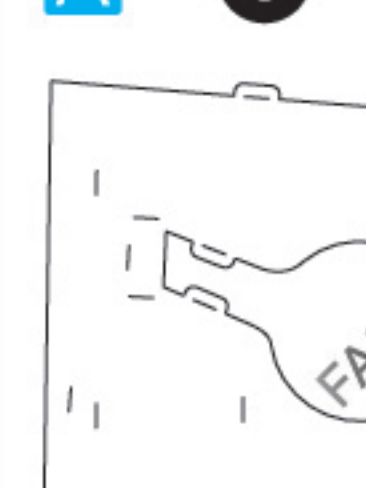


##### E



#### Step 3

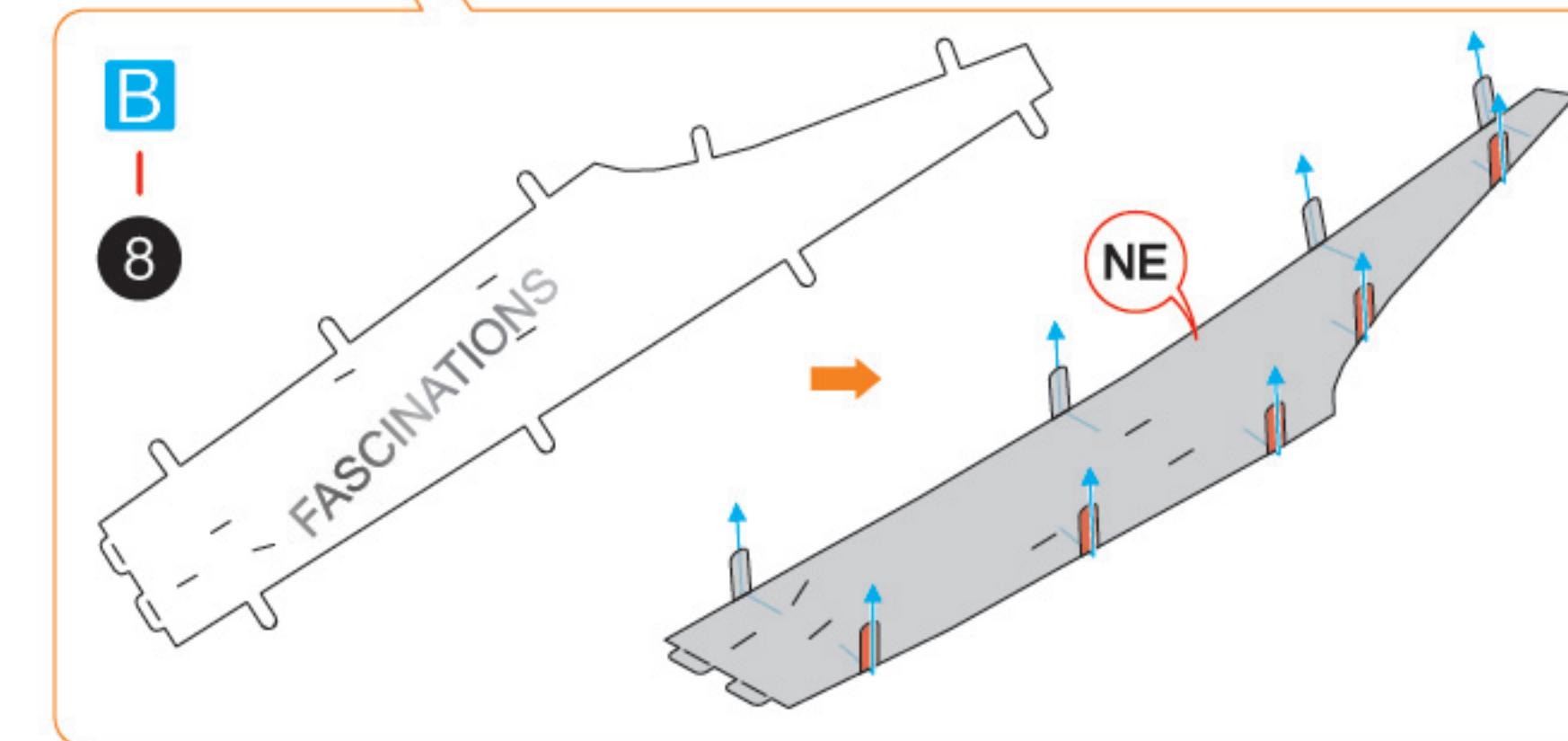
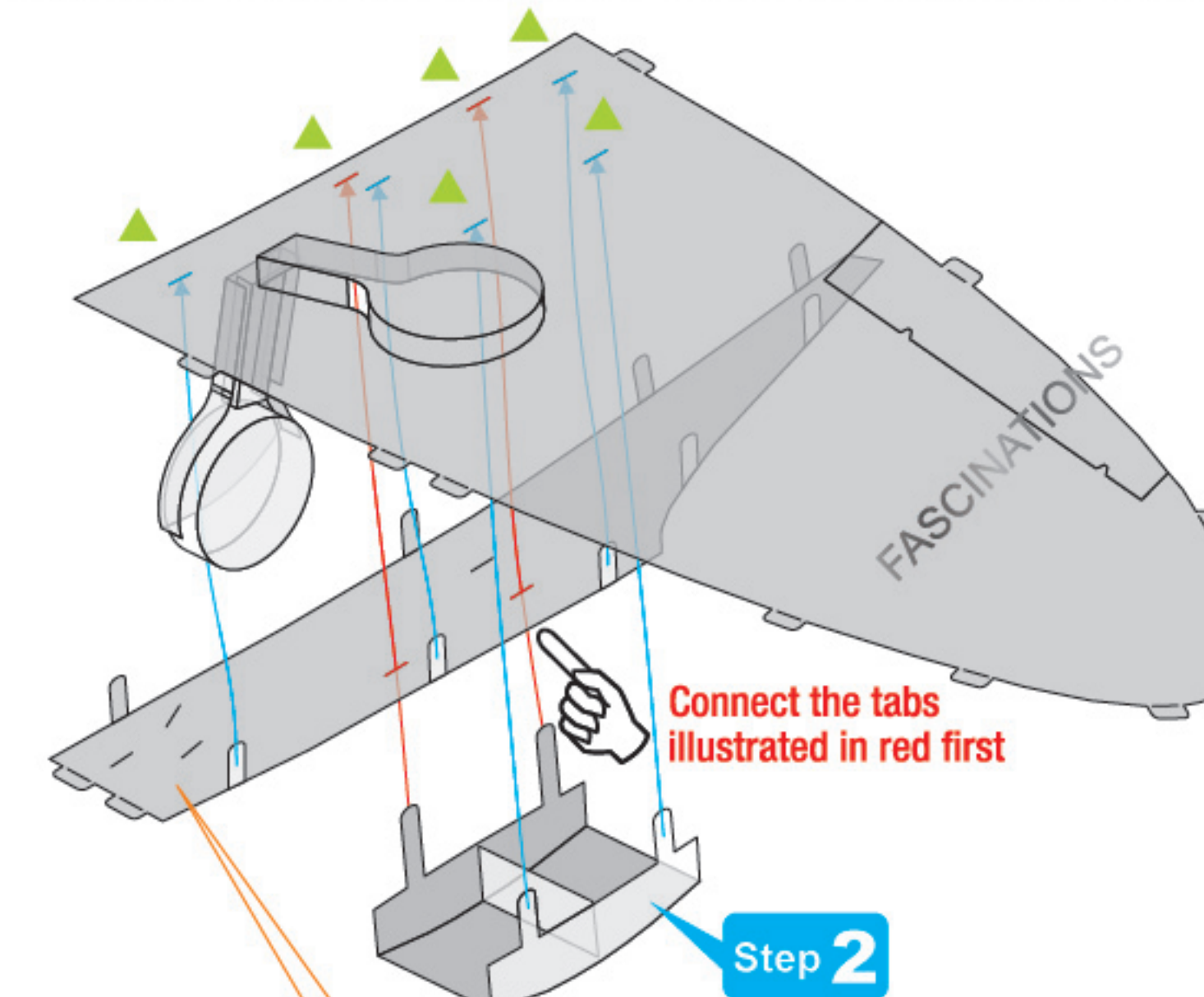
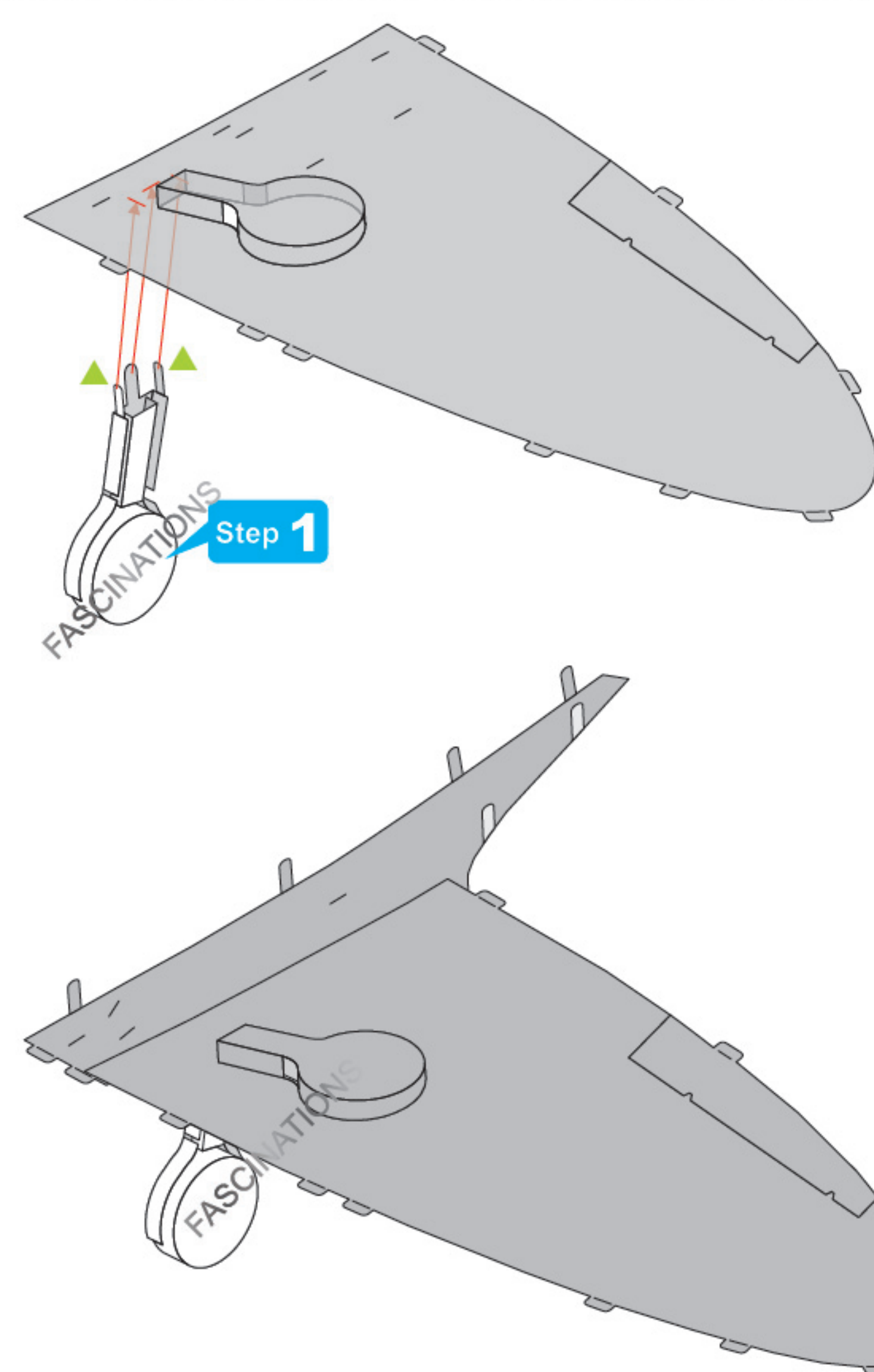
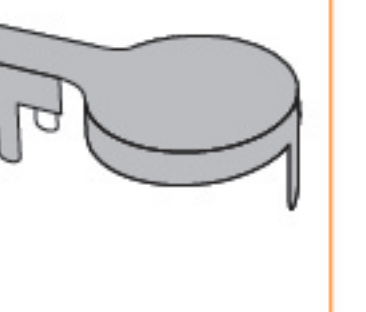
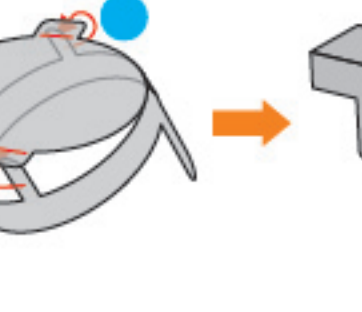
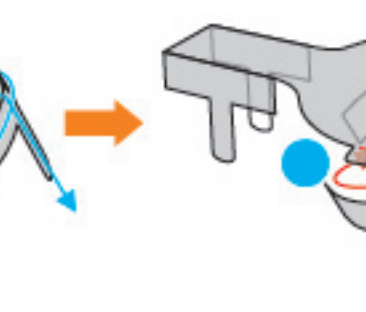
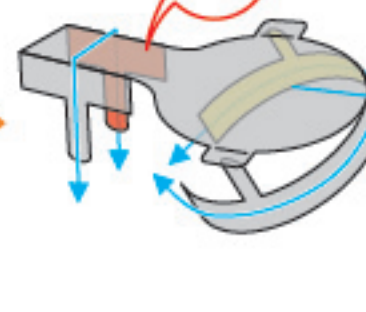
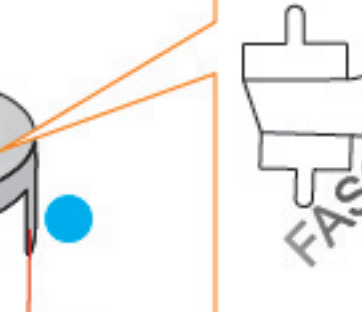
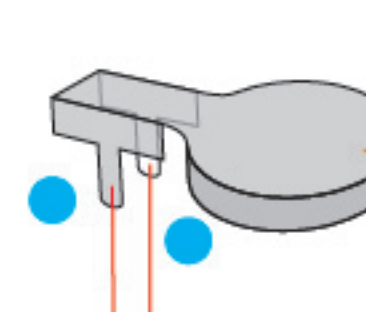
##### A - 6



##### A - 7

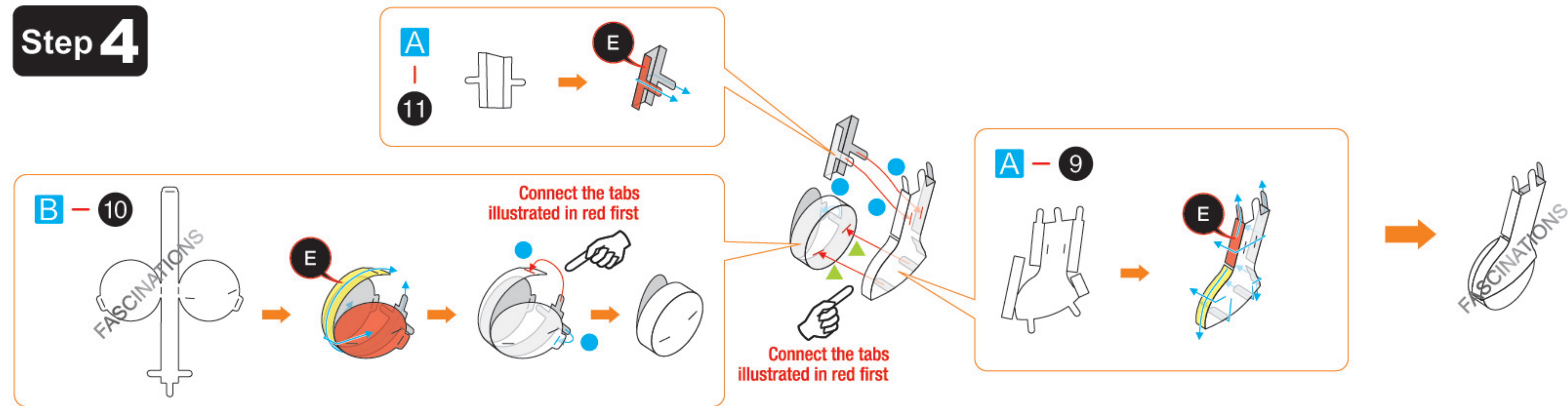


##### NE

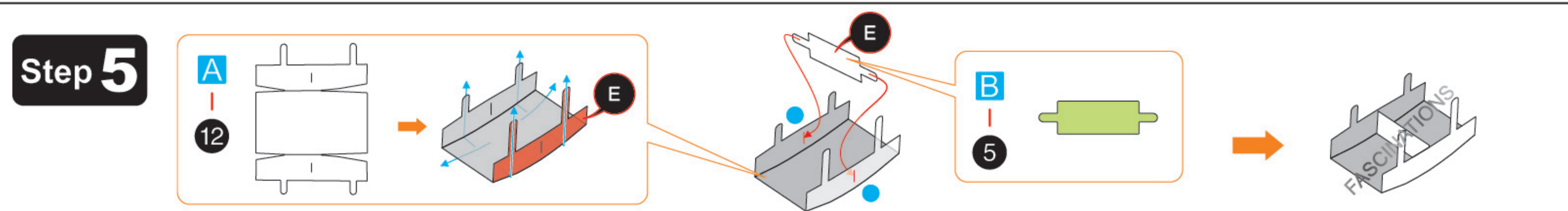




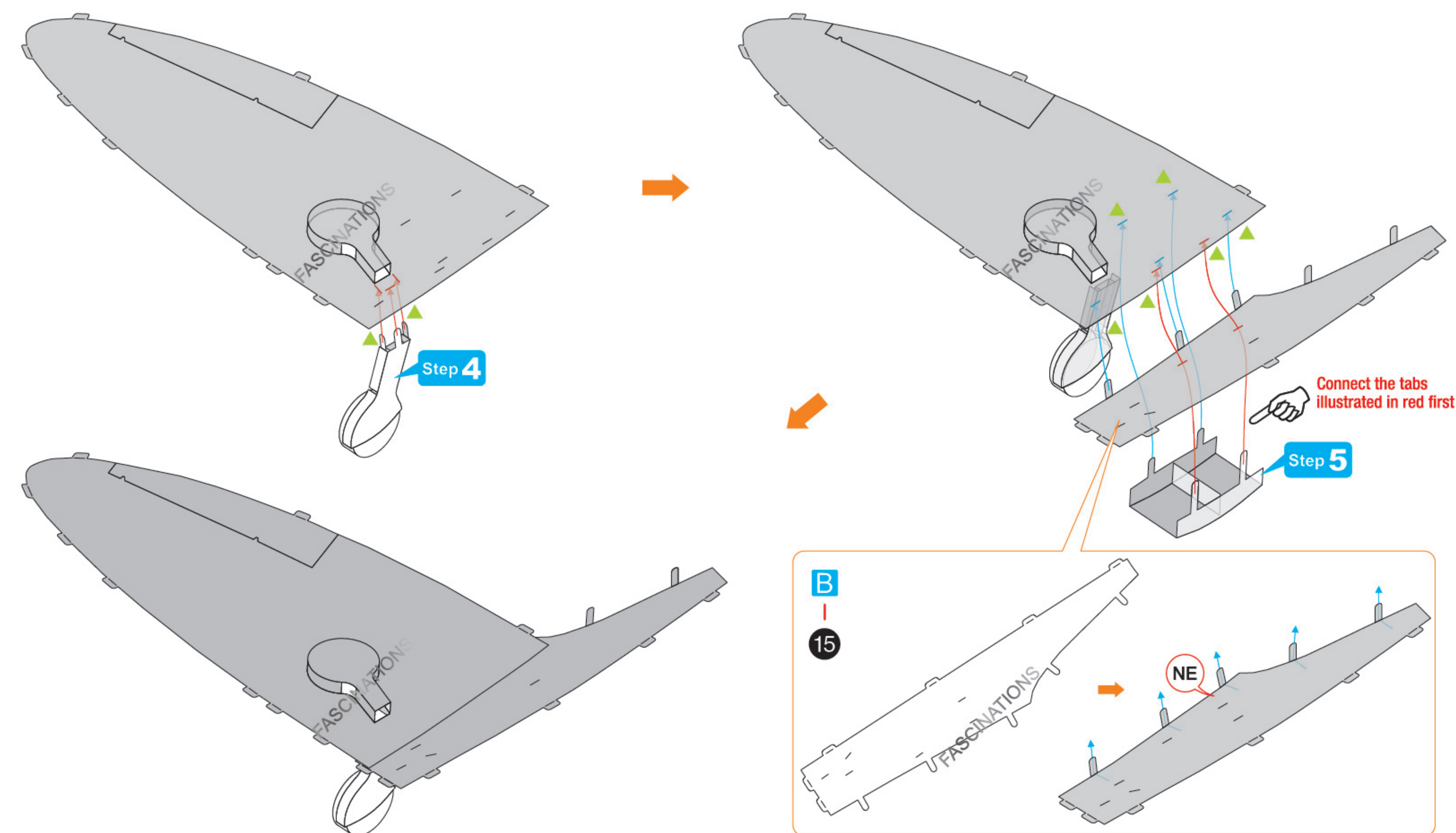
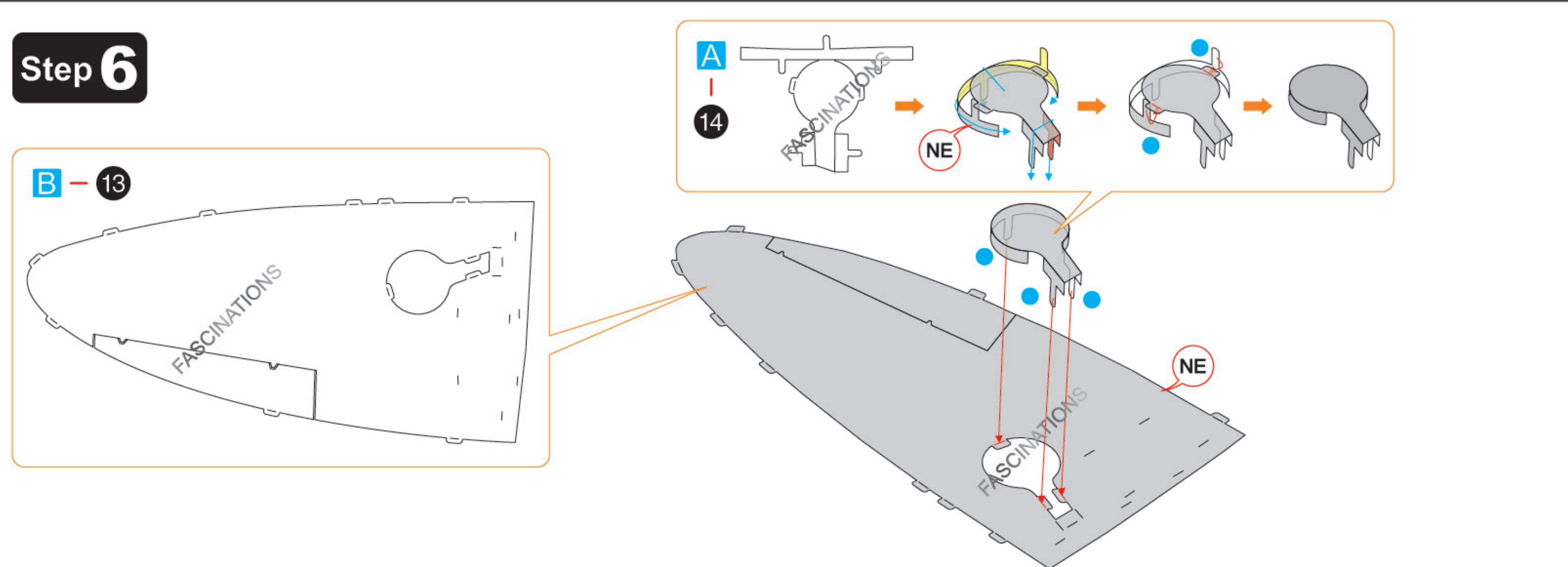
## Step 4



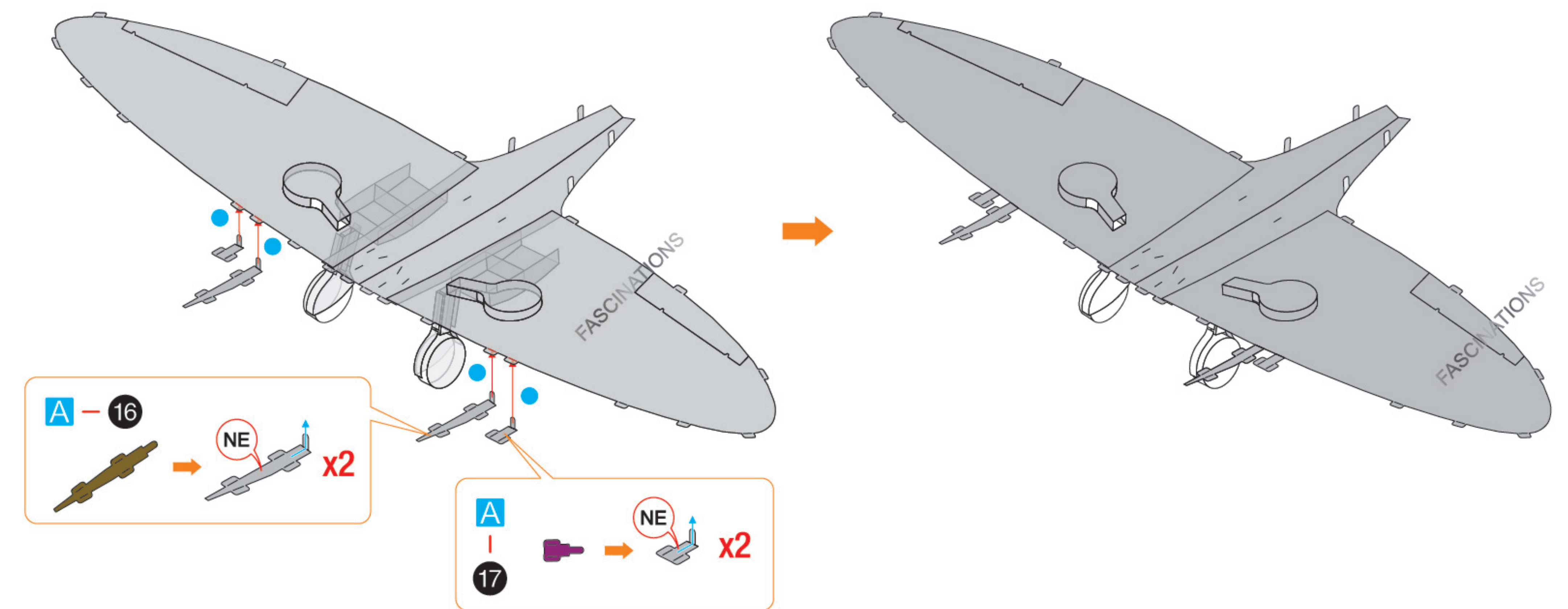
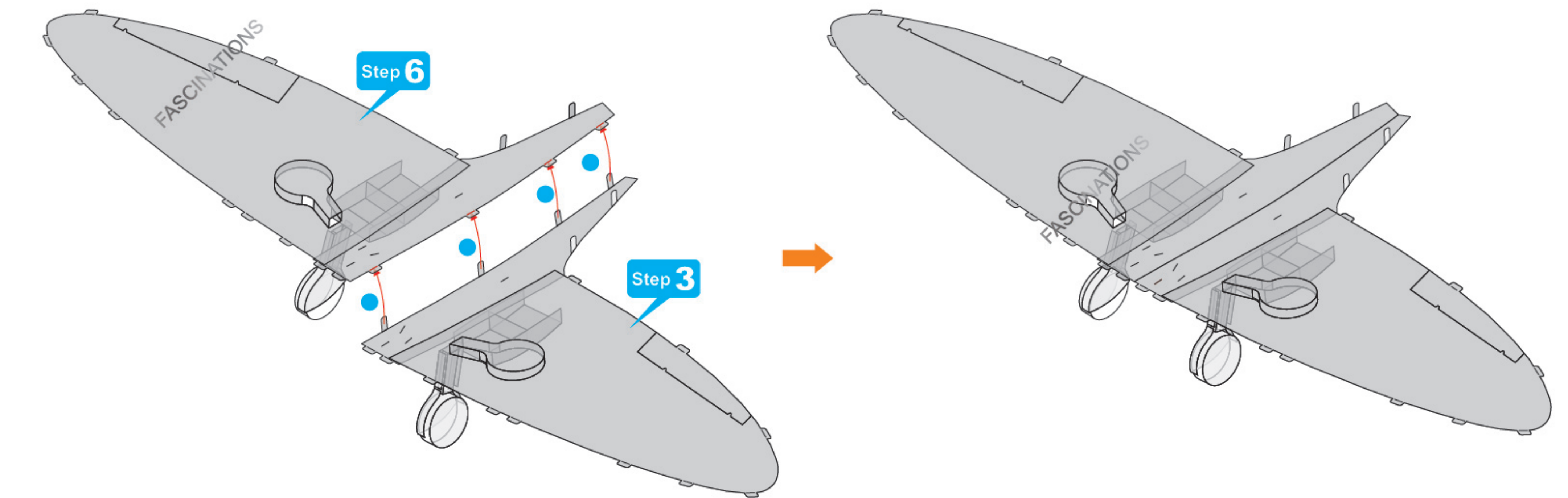
## Step 5



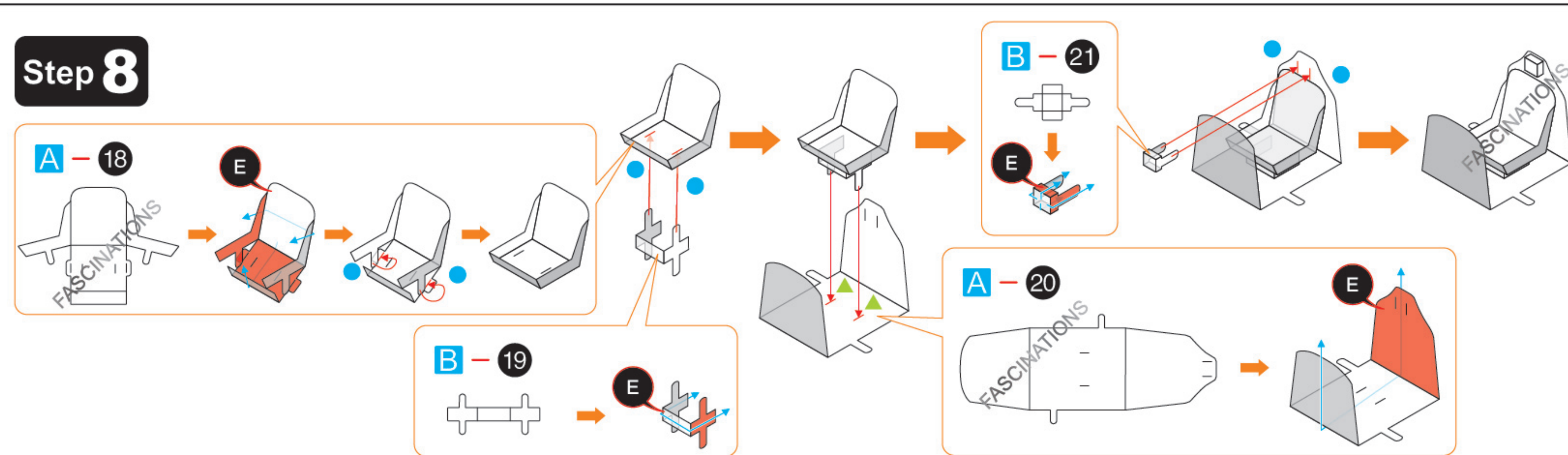
## Step 6



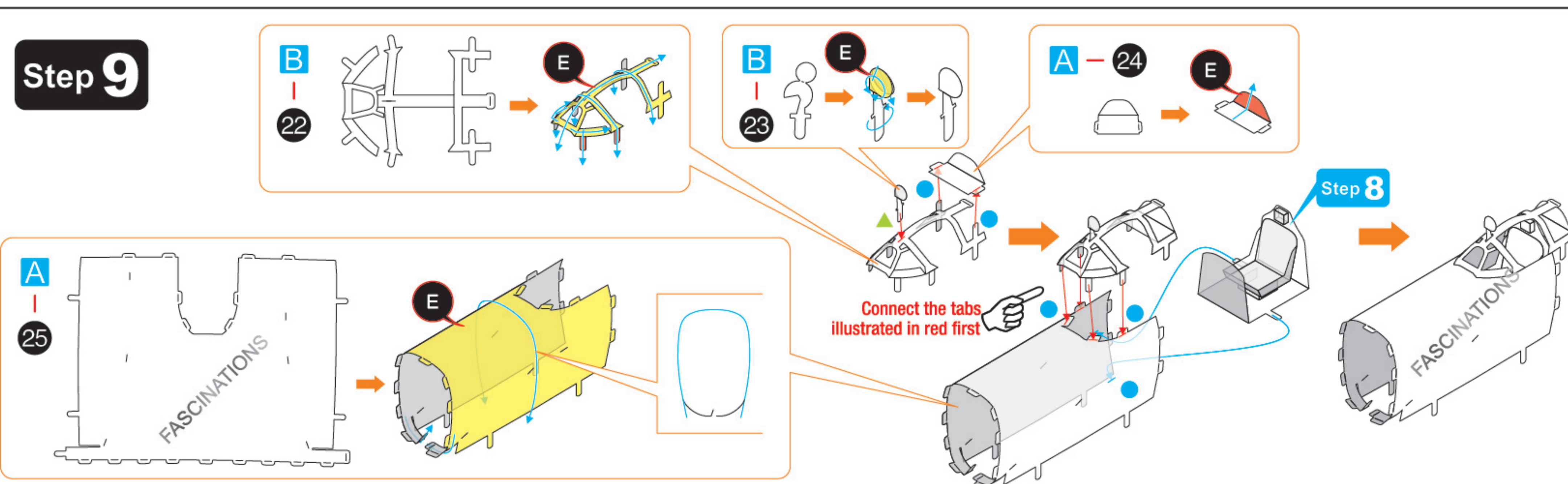
## Step 7



## Step 8

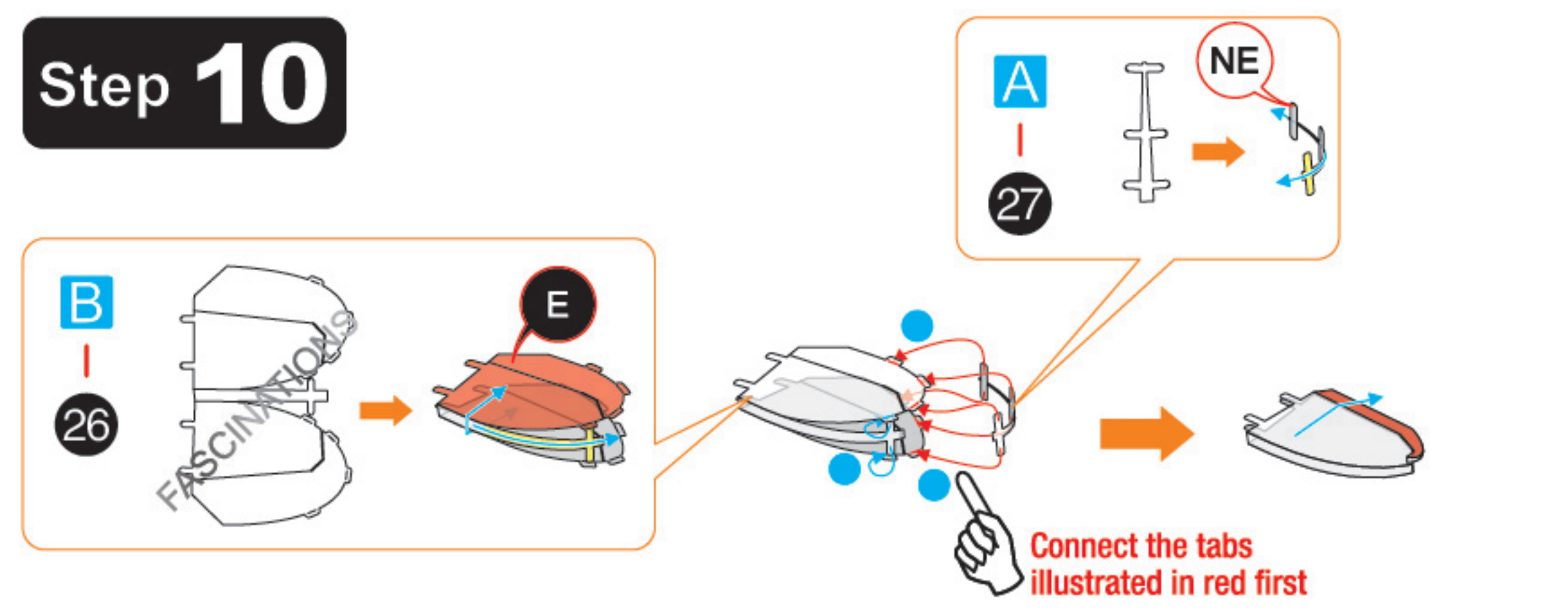


## Step 9

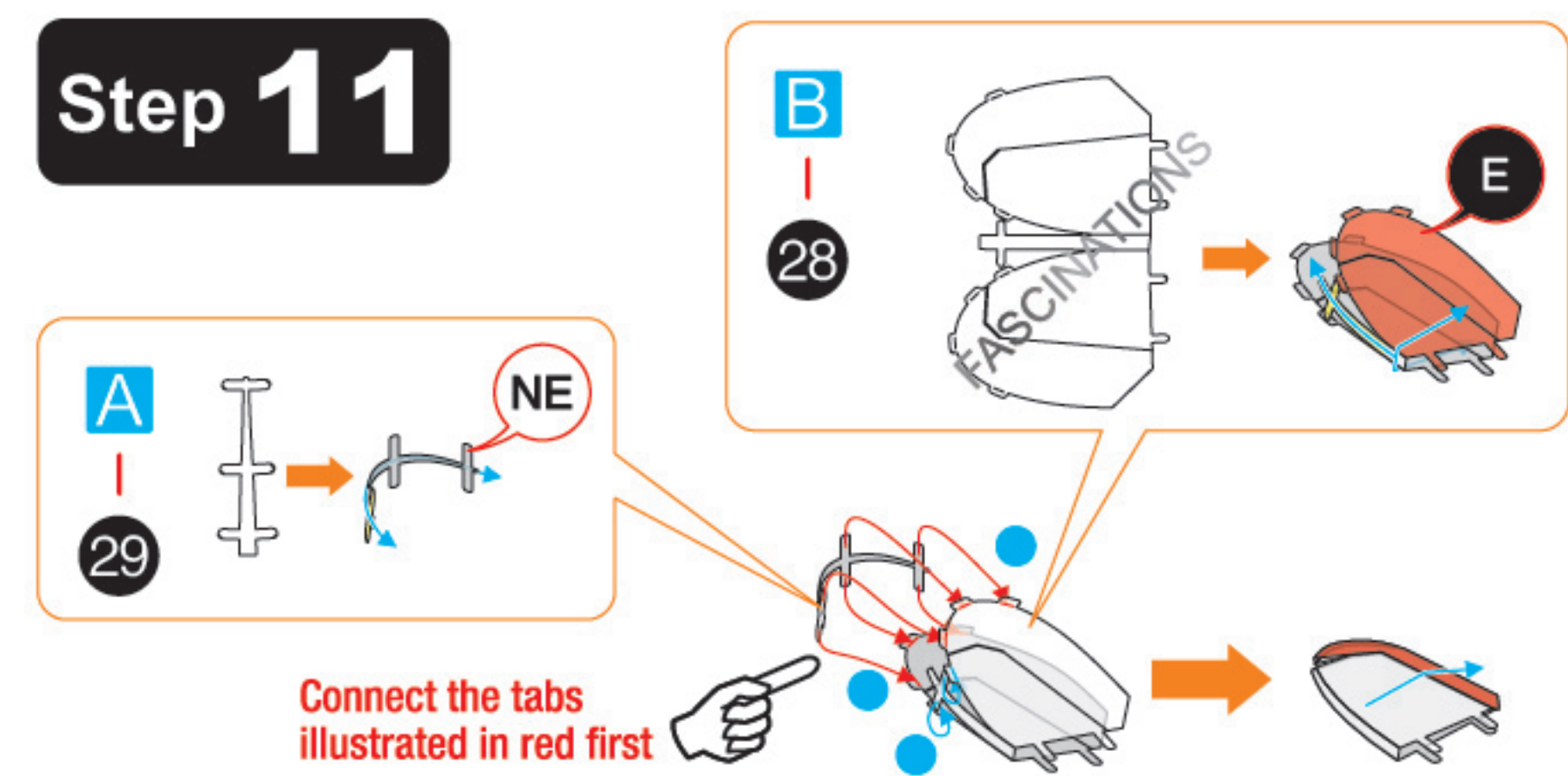




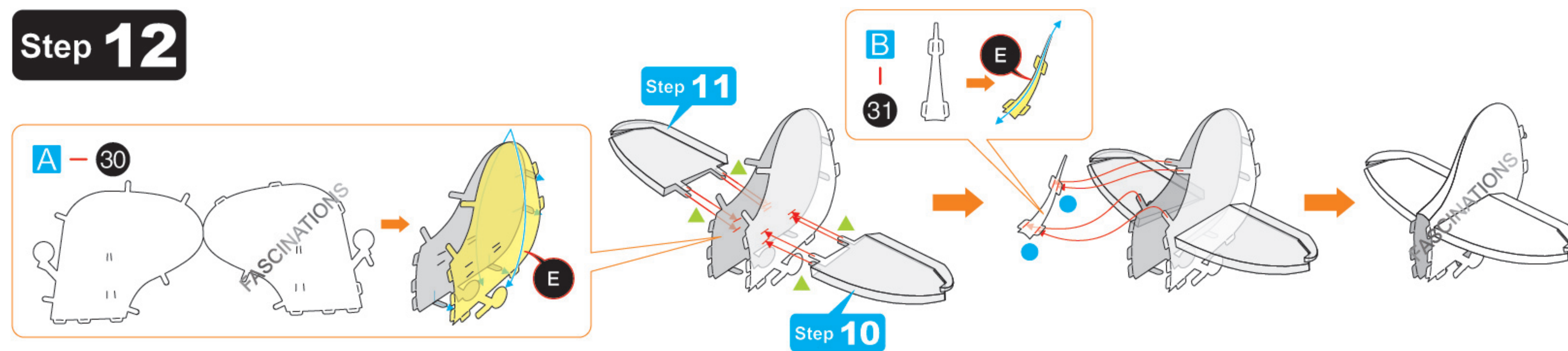
## Step 10



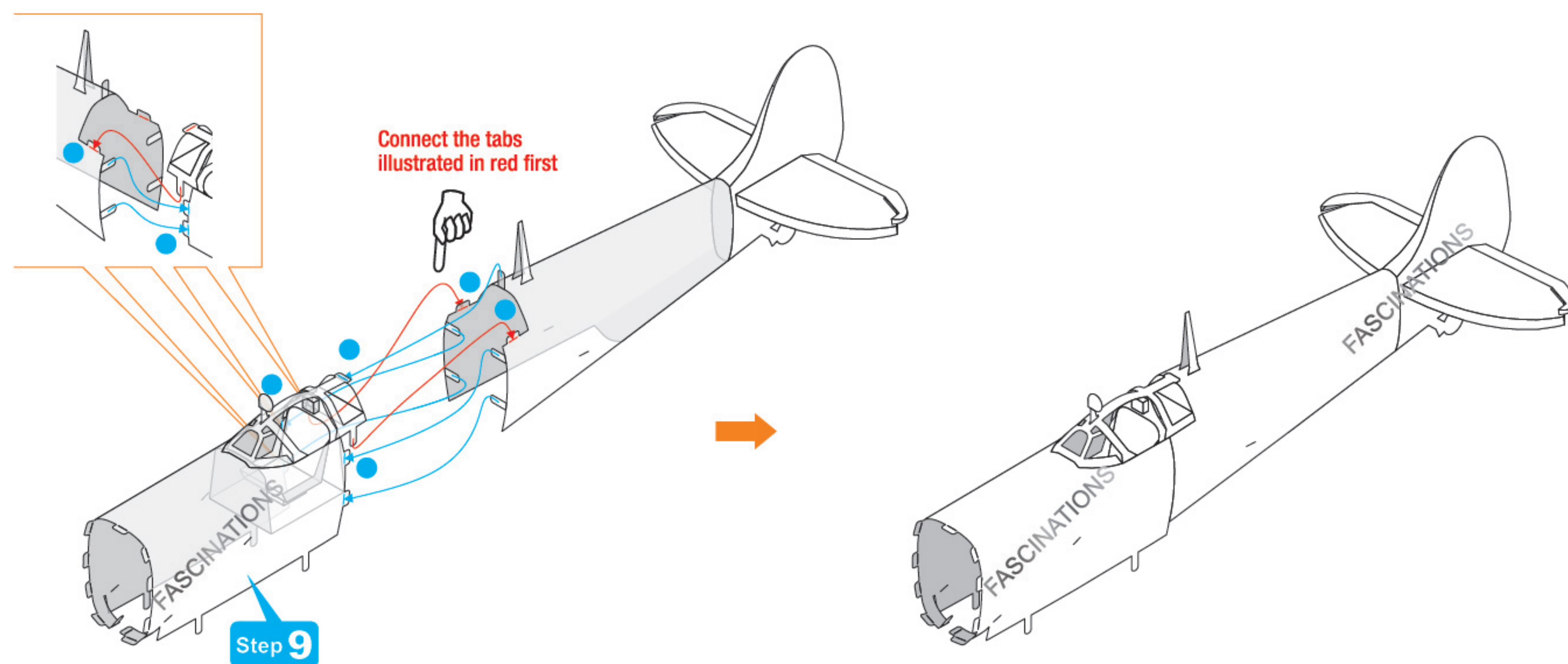
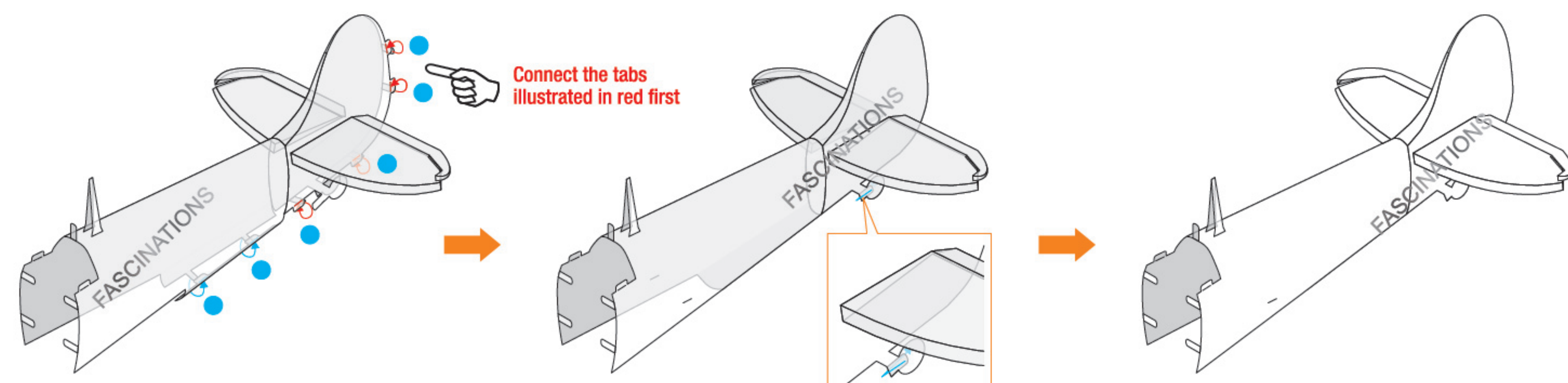
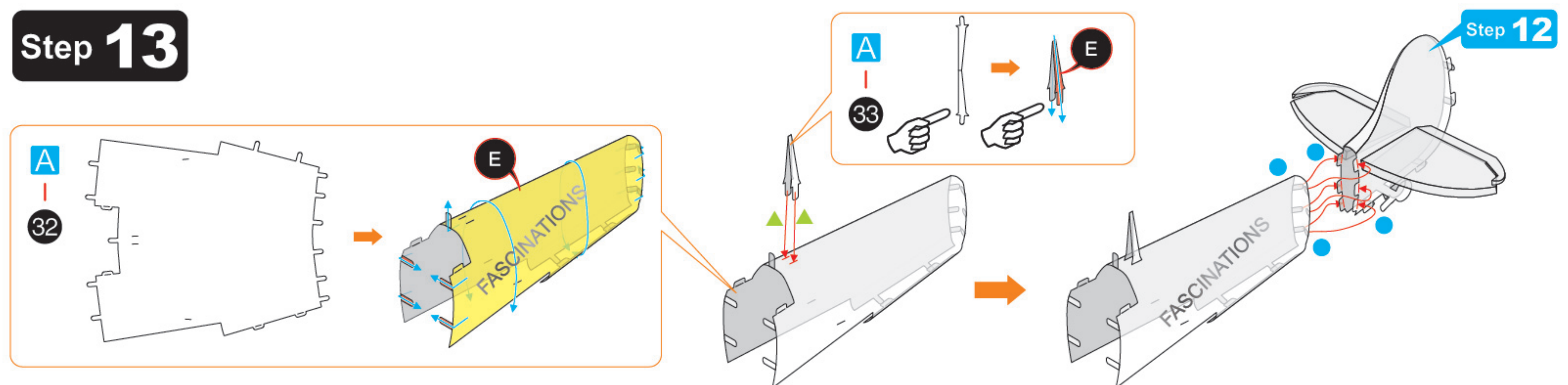
## Step 11



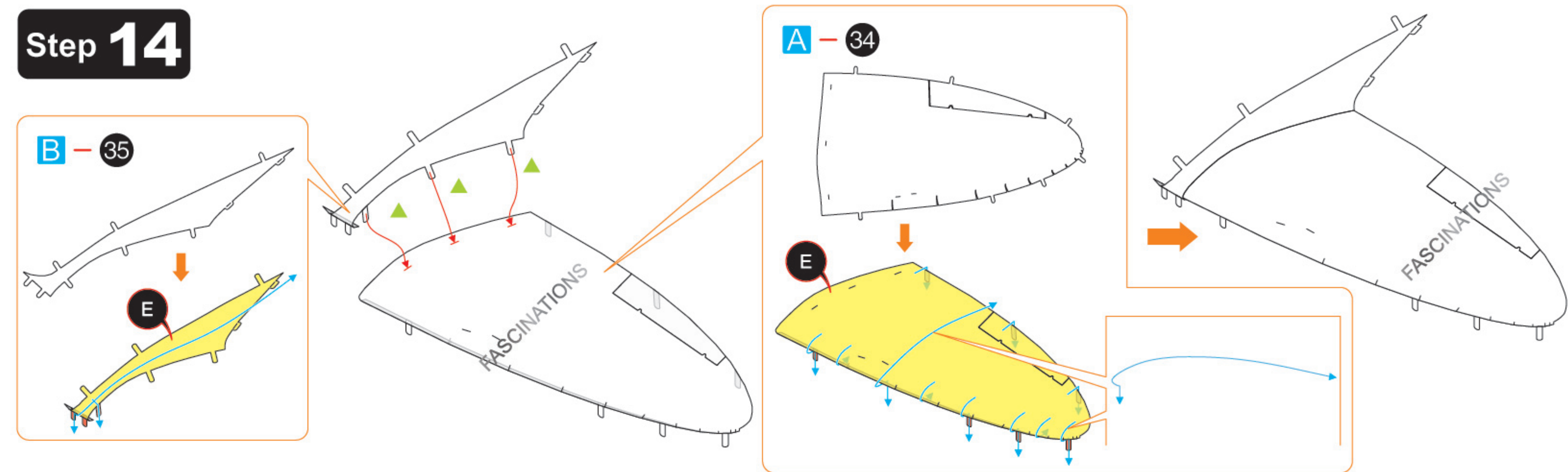
## Step 12



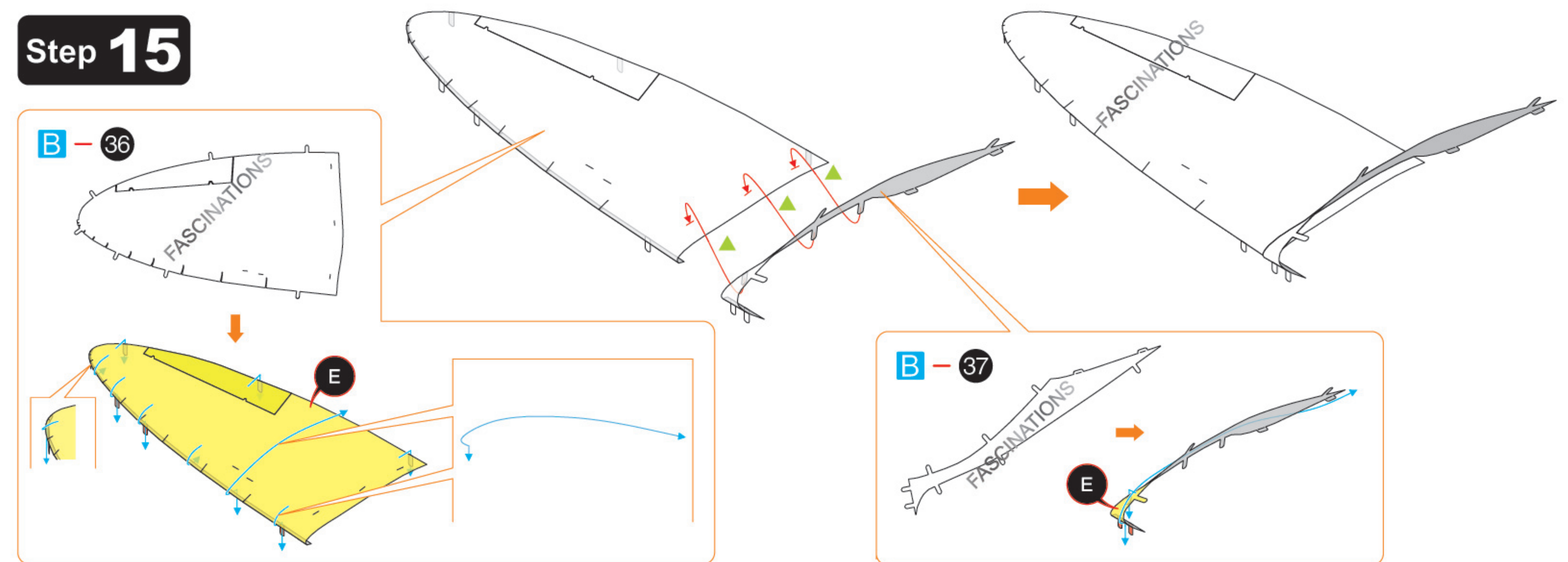
## Step 13



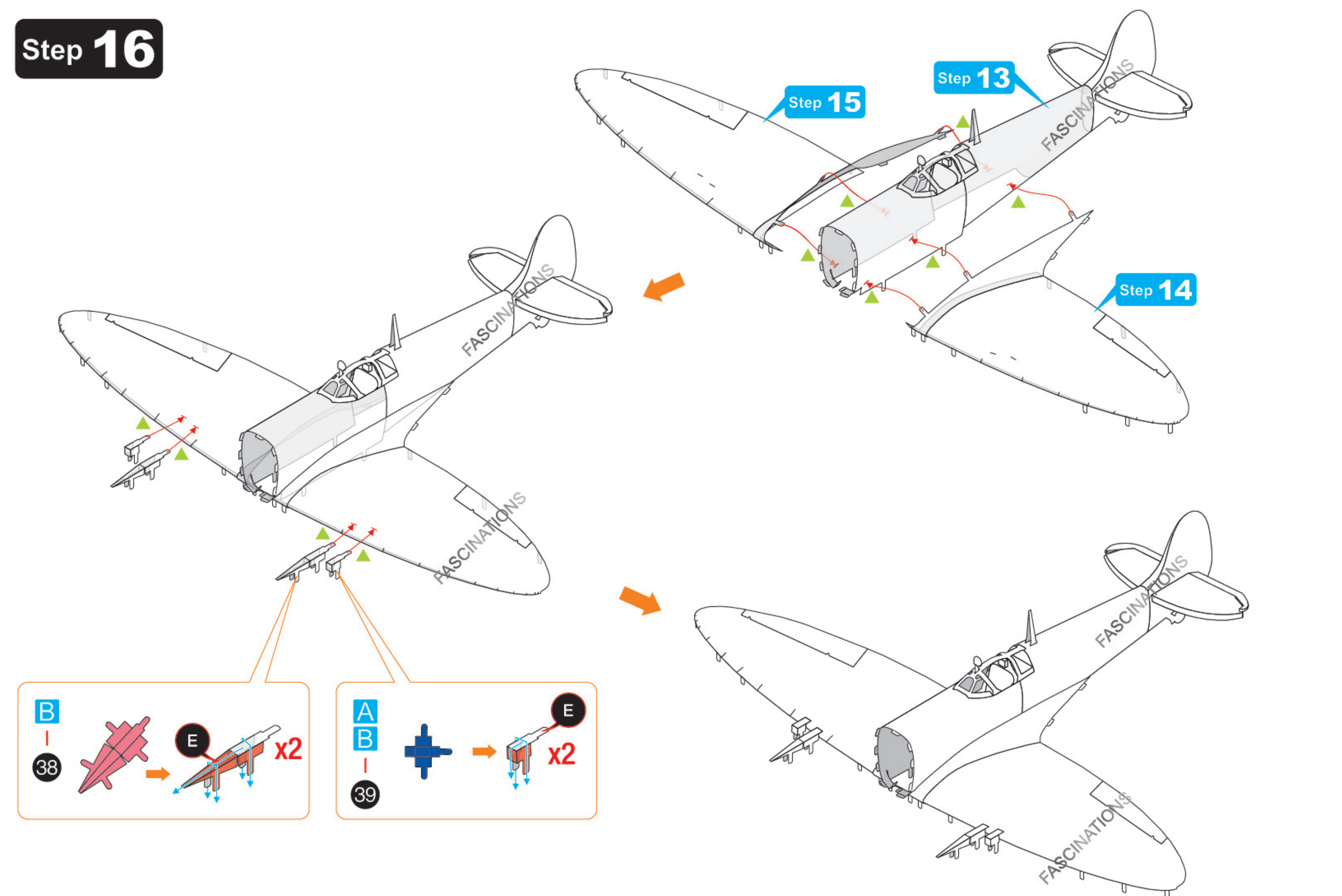
## Step 14



## Step 15

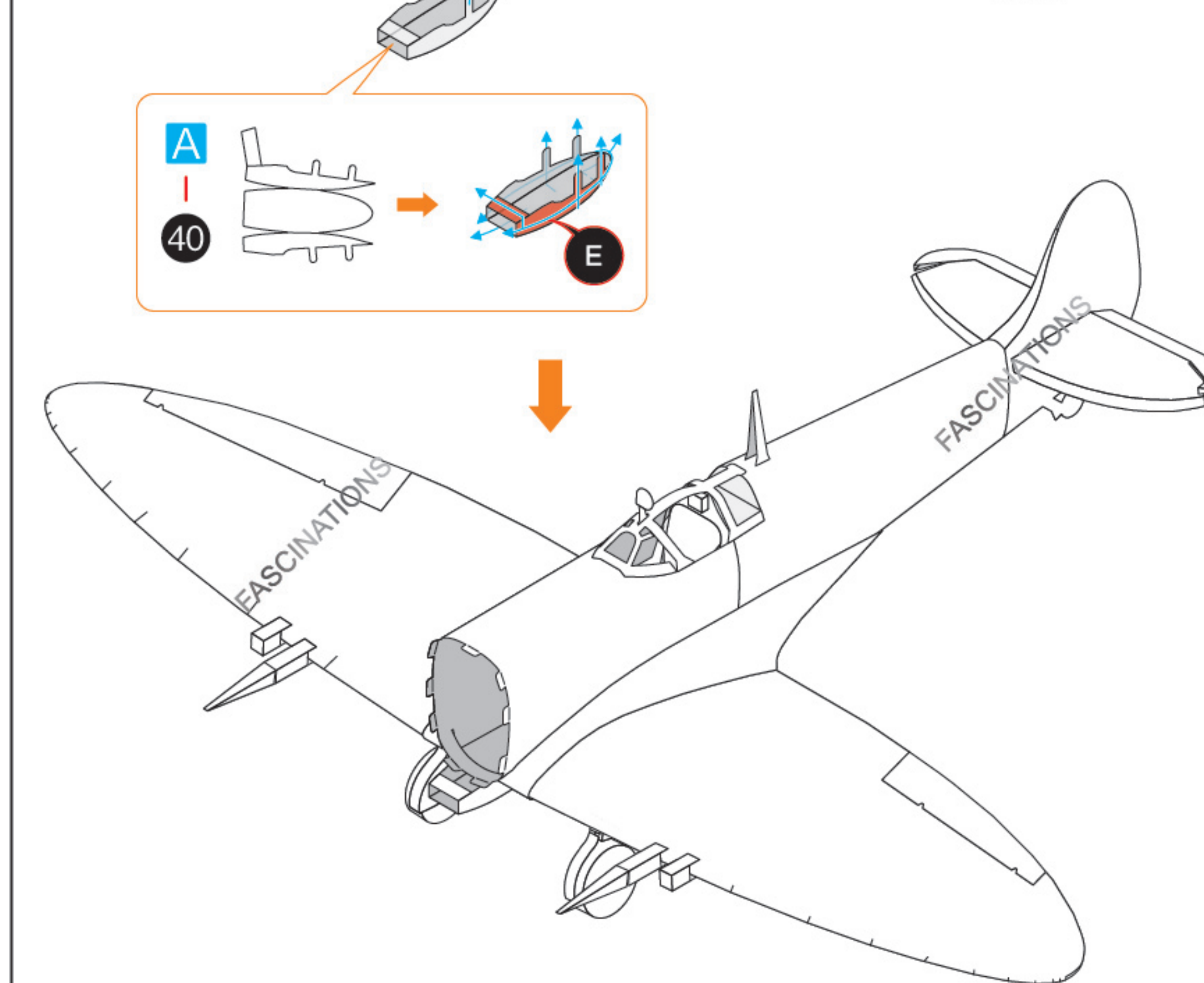
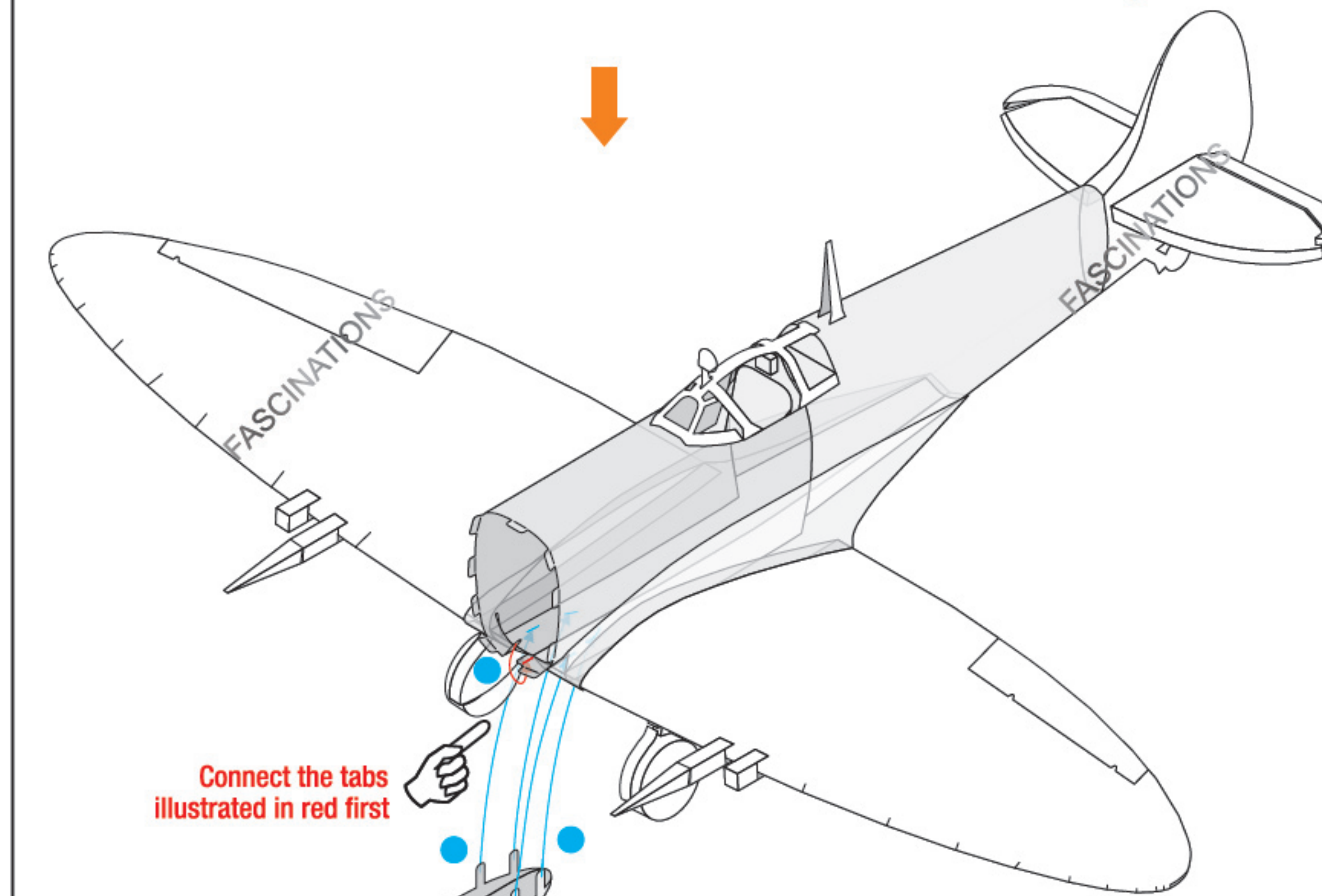
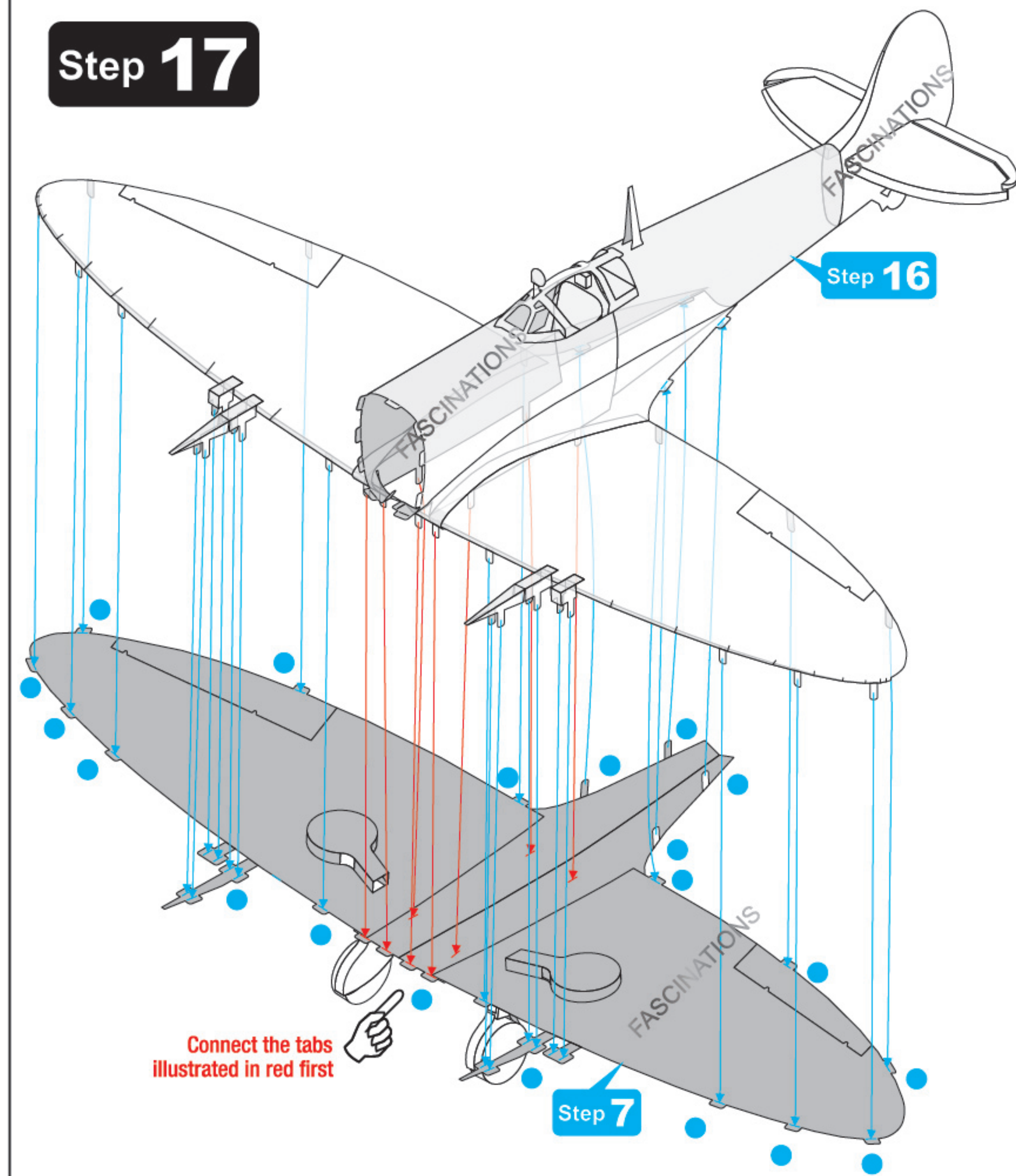


## Step 16

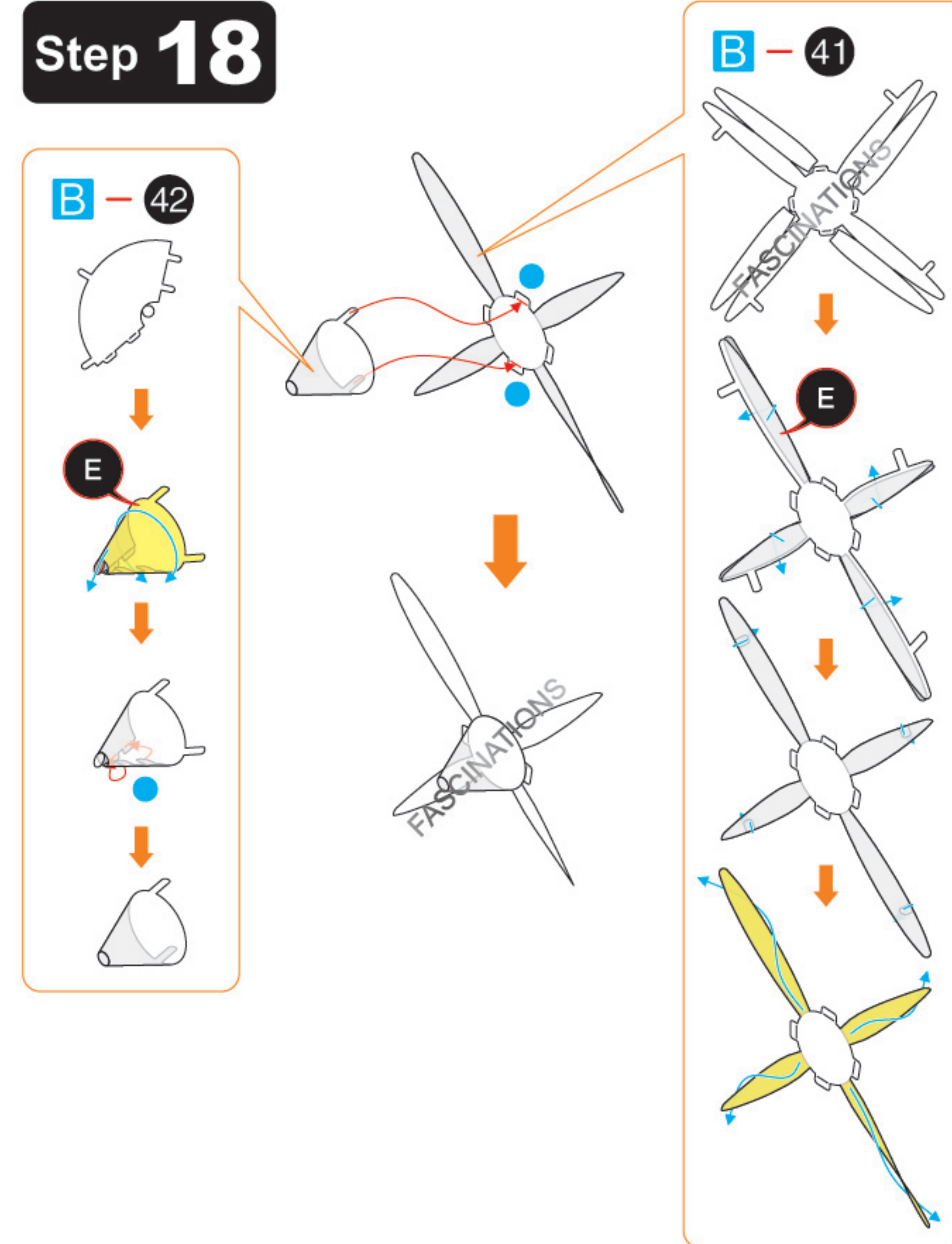




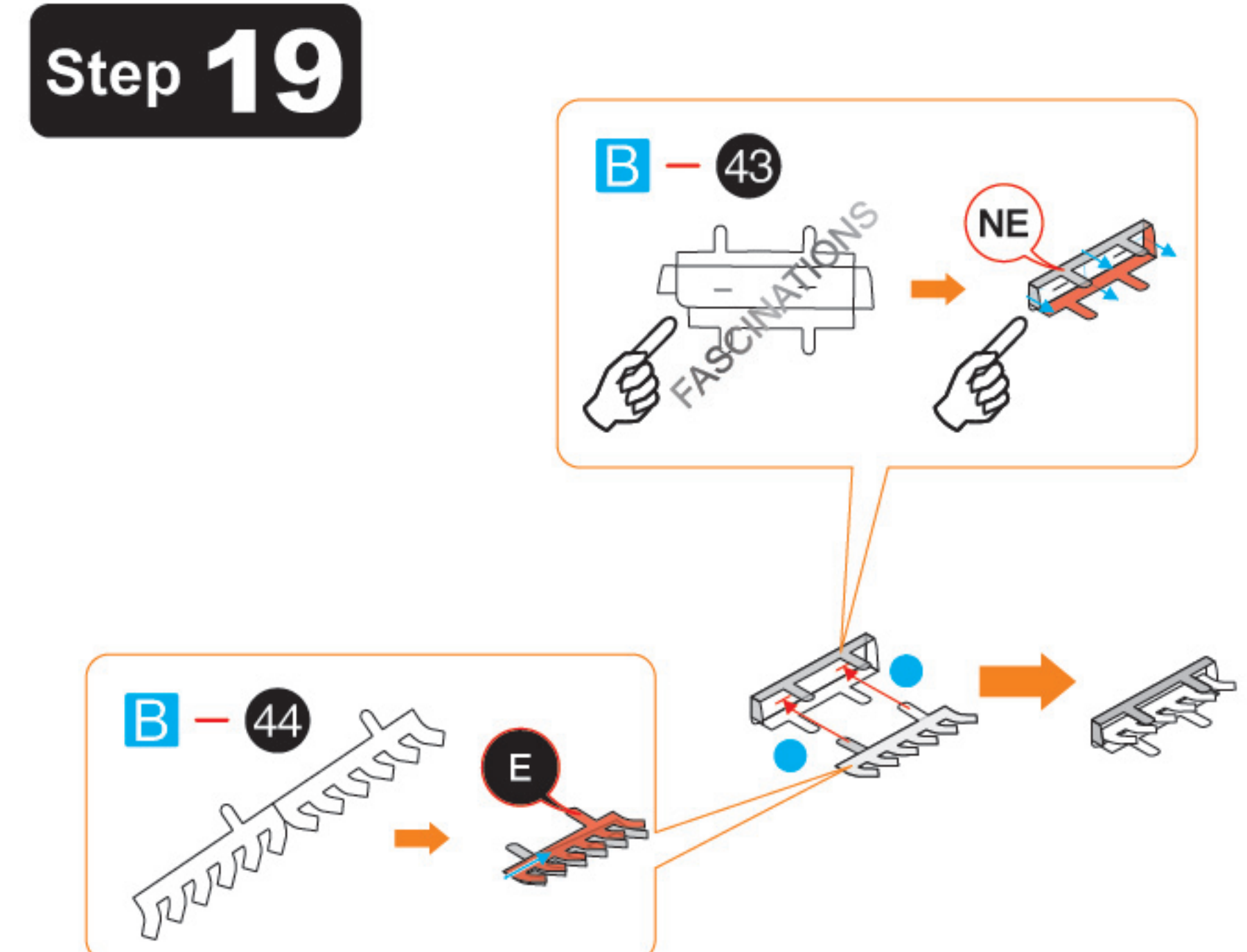
# Step 17



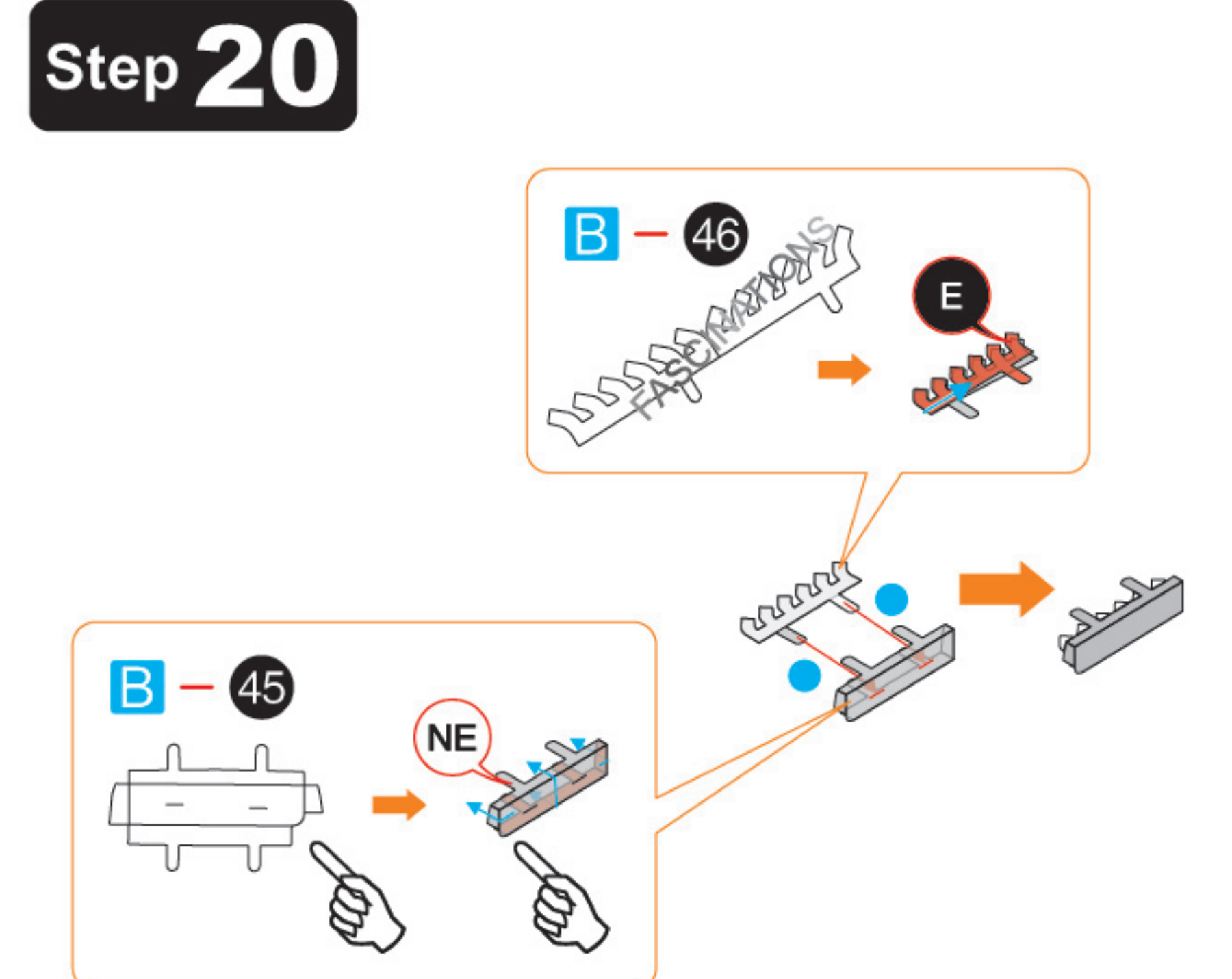
# Step 18



# Step 19



# Step 20



# Step 21

