

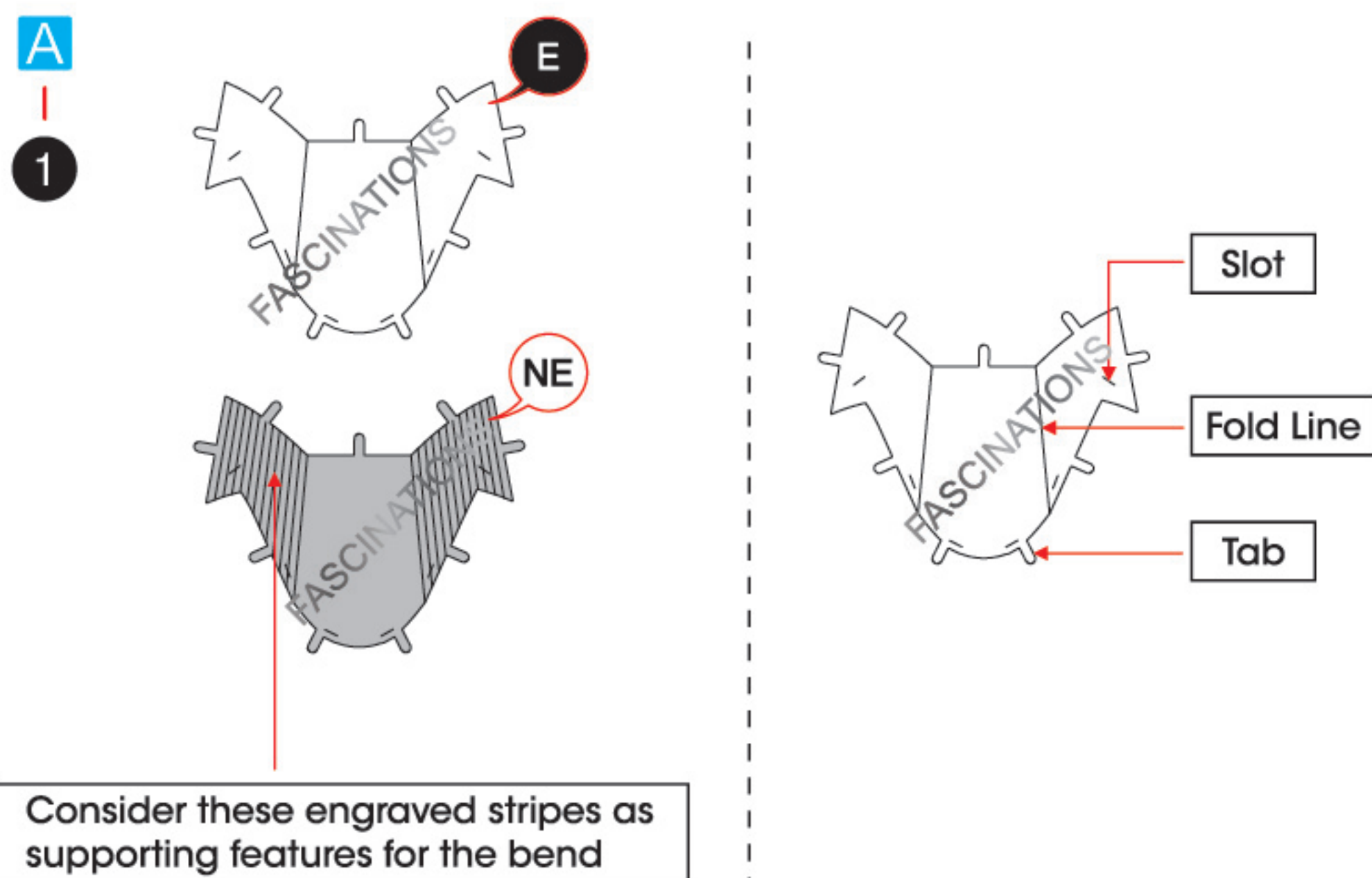
GREAT WHITE SHARK
ME1008

360°
view



It is highly recommended that you visit
www.metalearth.com/360/ME1008
to see the completed model before assembling your own

TO CREATE THE BEST CONNECTIONS



Legends:

- E** Engraved/ Color side
- NE** Non - engraved/ Silver side
- Attention point
- Insert tab and bend 90 degrees
- Insert tab and twist 90 degrees

Assembly tip:

If needed, slightly twist tabs to hold parts together then untwist and bend them down for a nice finish.

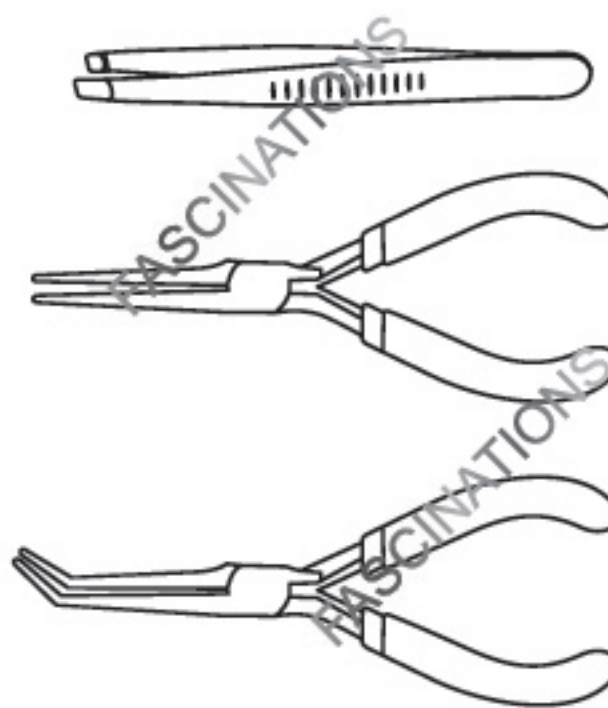
- Yellow areas should be curled
- Red areas should be folded

Recommended tools:

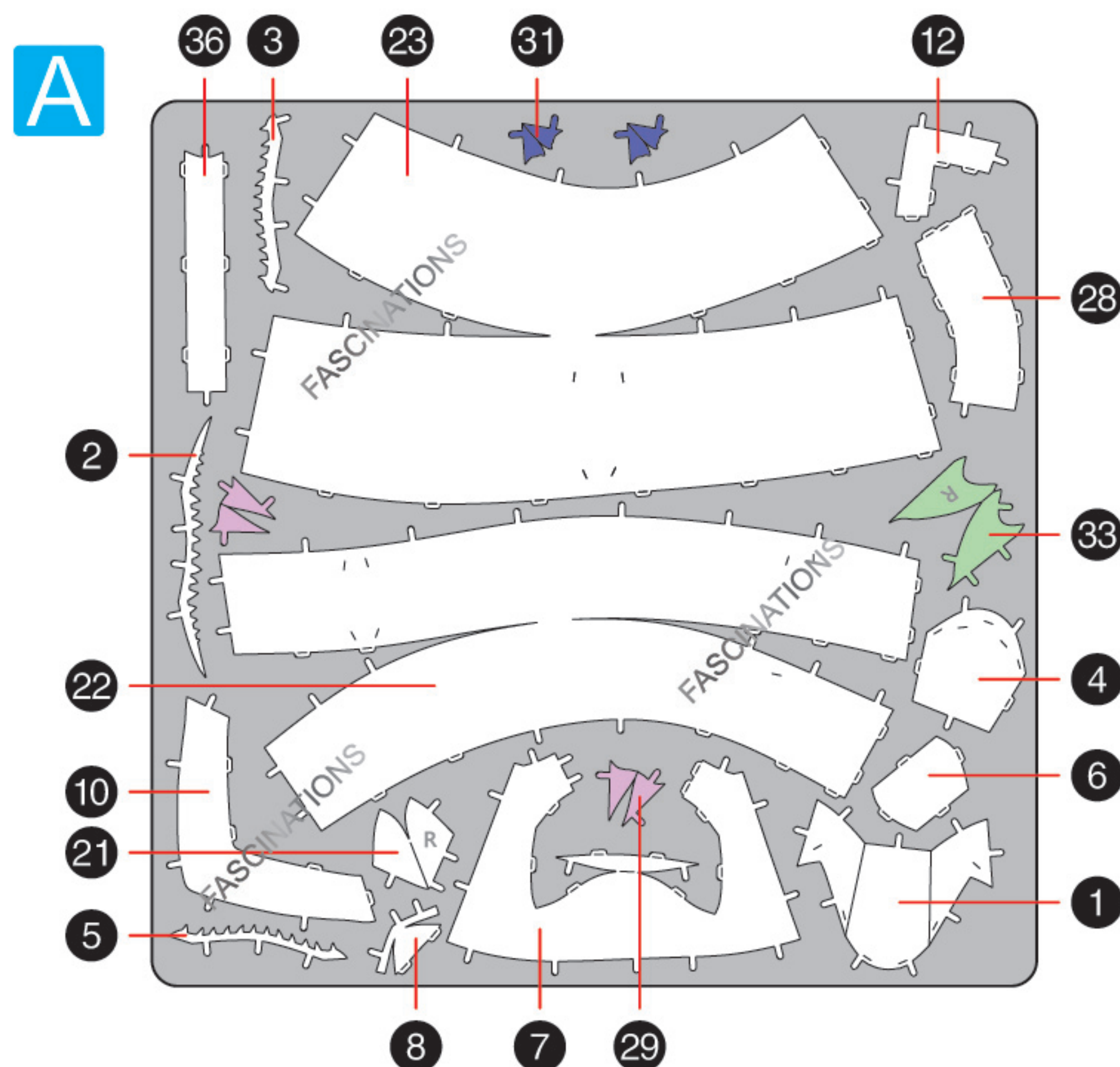
- Wire cutters: helpful for taking parts from the metal sheets.



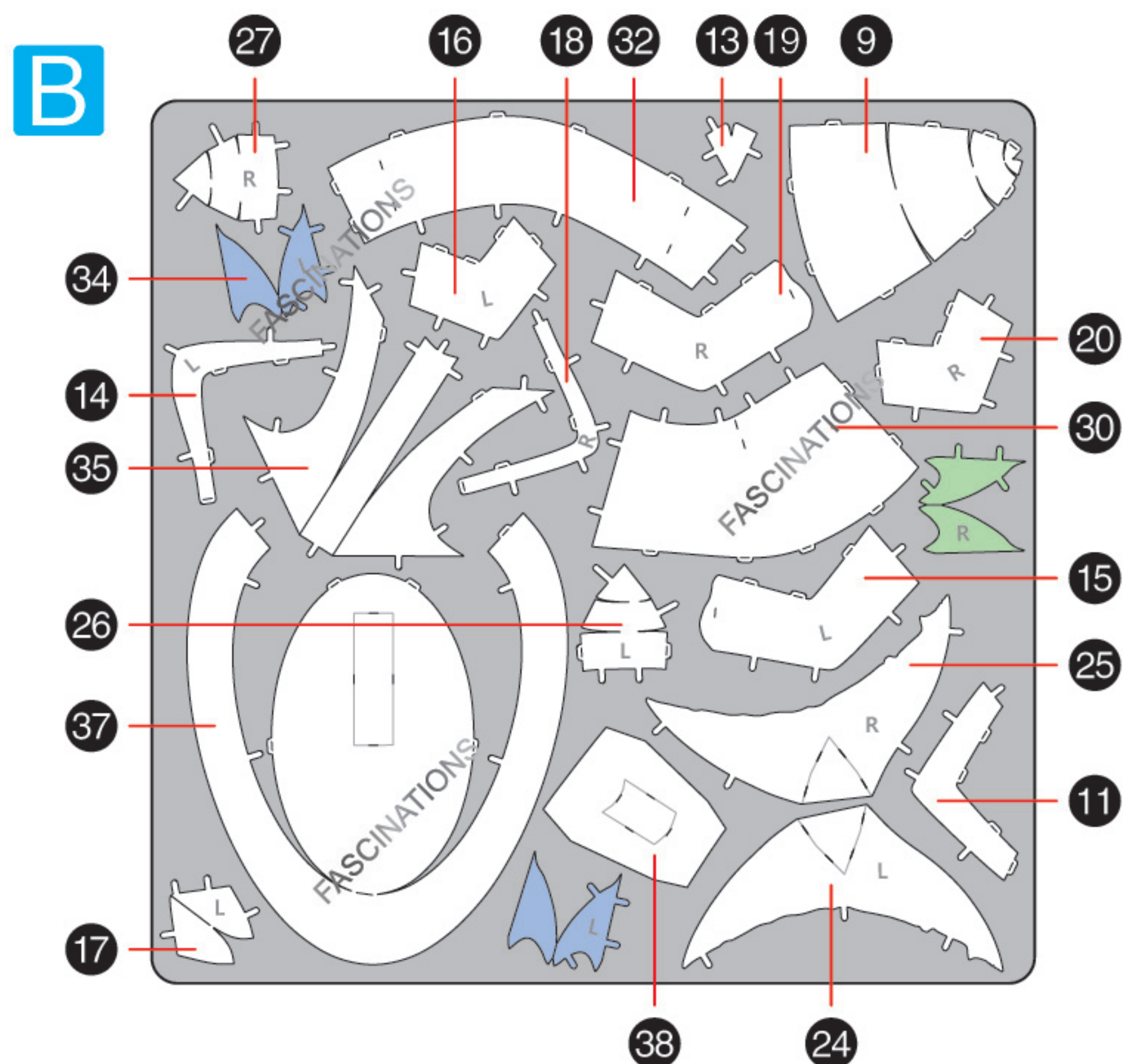
- Tweezers or needle nose pliers: helpful for folding parts, bending and twisting tabs.



METAL SHEETS



Parts with same color are duplicates

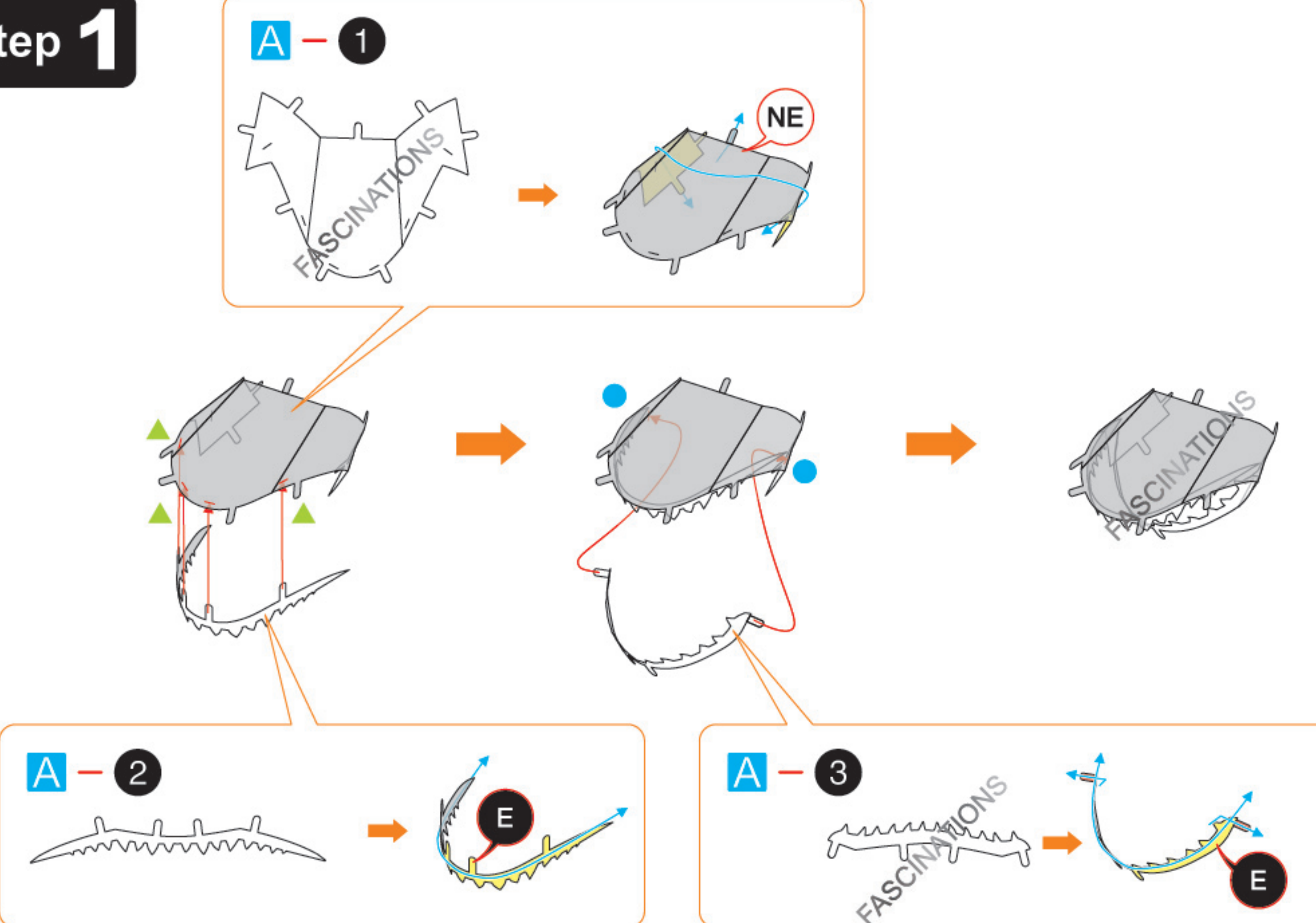


In order to avoid possible injury from sharp edges, please carefully discard the metal sheets after parts have been removed.

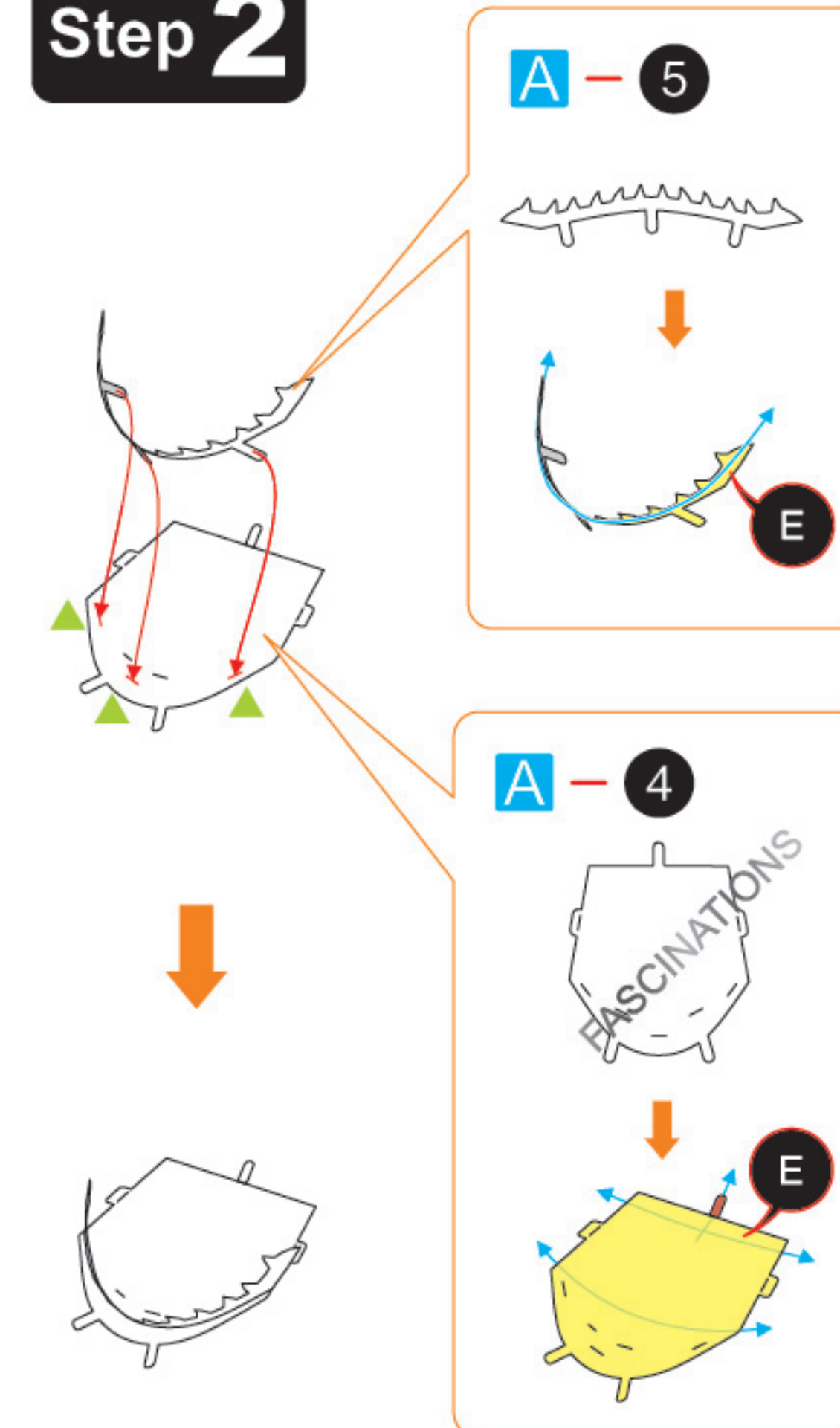
Go to www.metalearth.com/360/ME1008 to see the zoomable PDF version of this instruction sheet

ASSEMBLY FLOW CHART

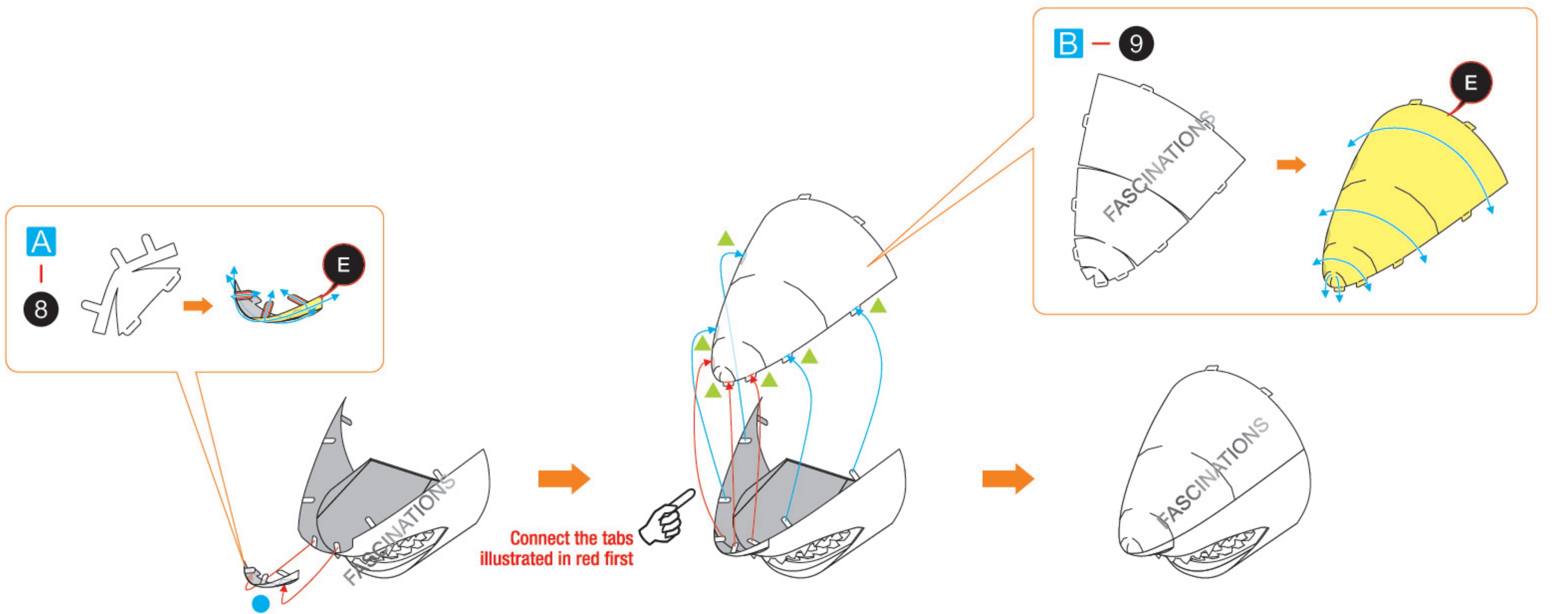
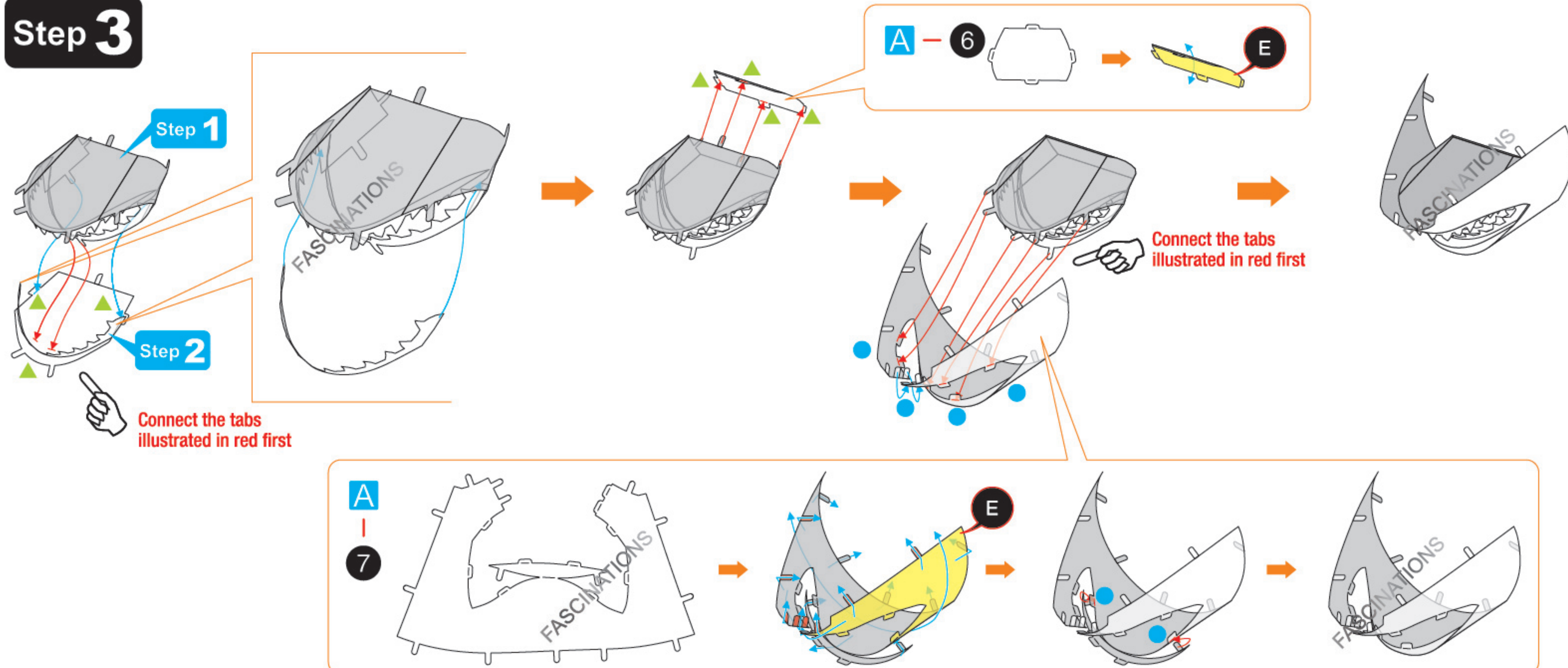
Step 1



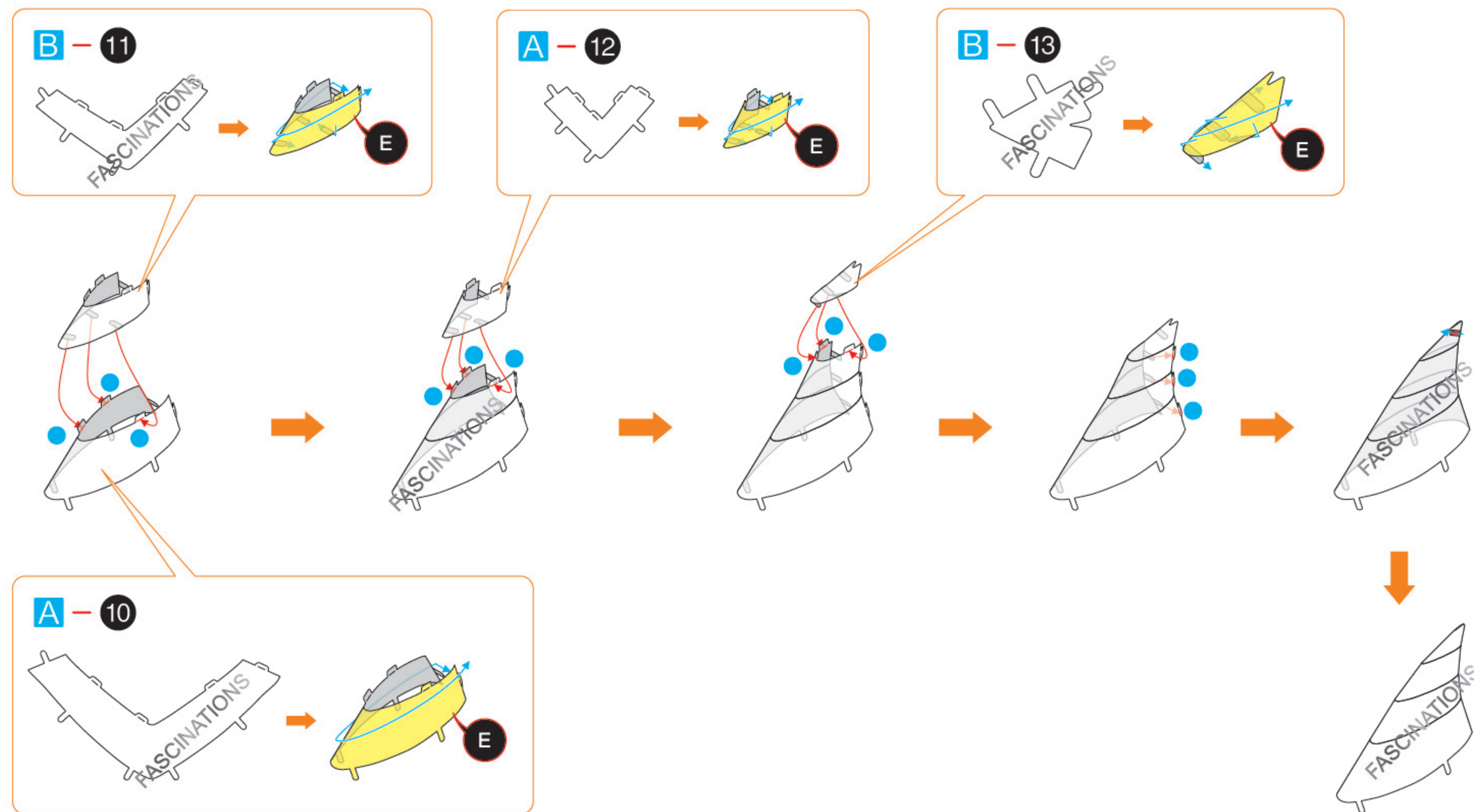
Step 2



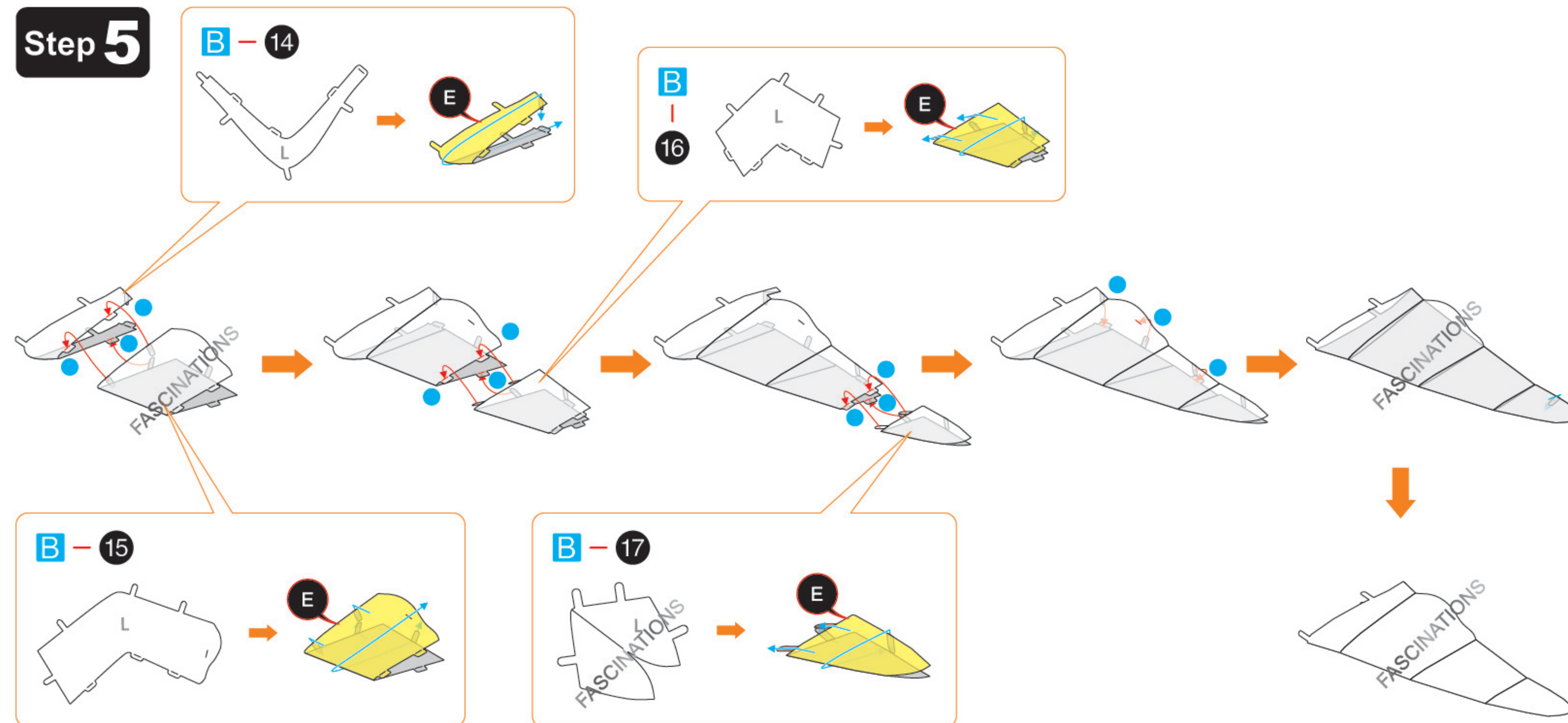
Step 3



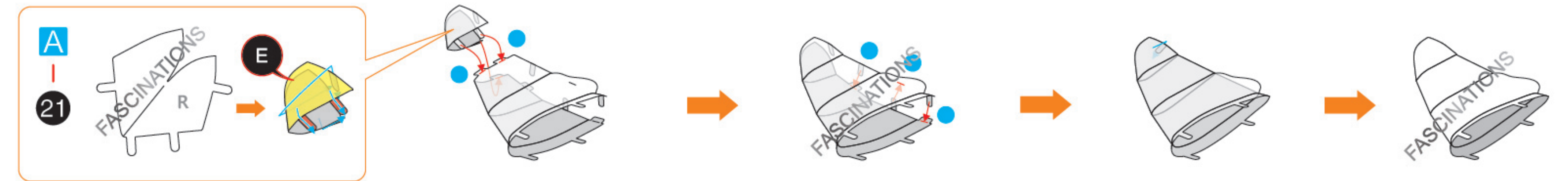
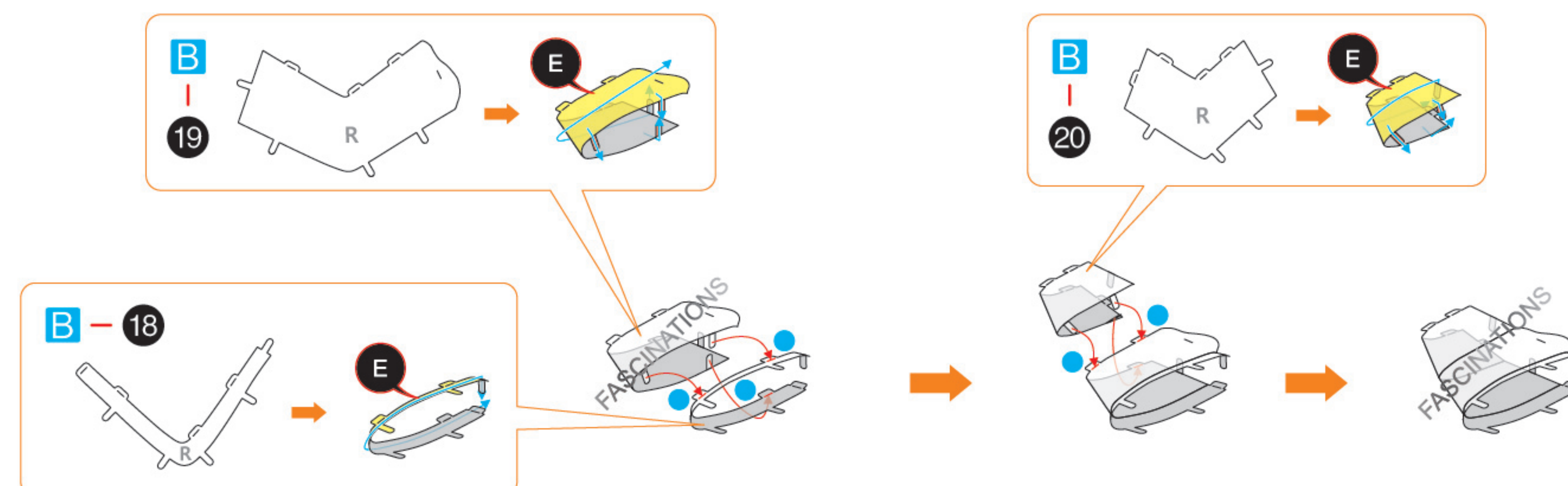
Step 4



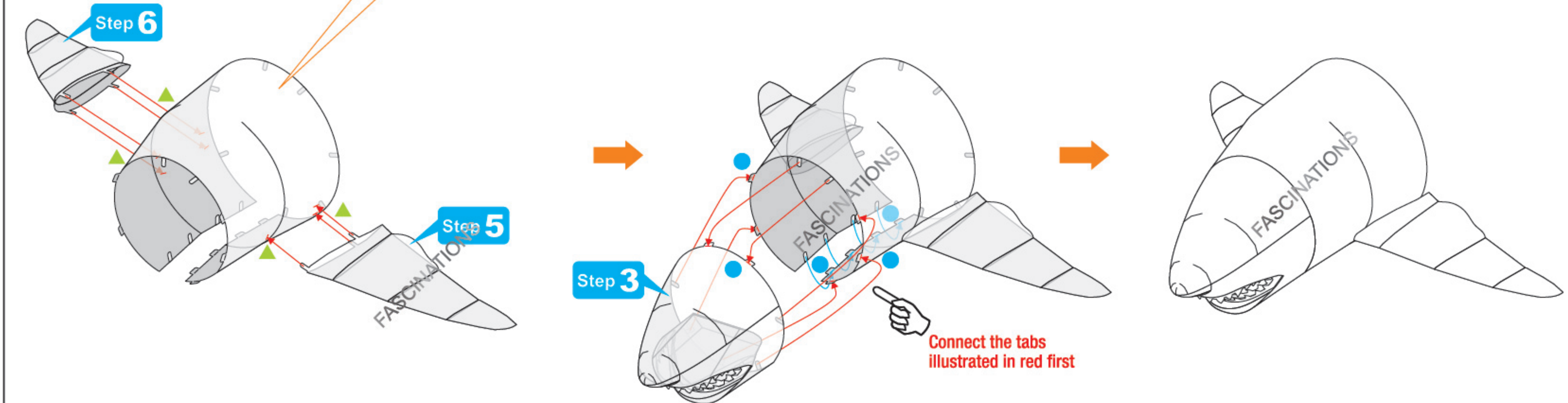
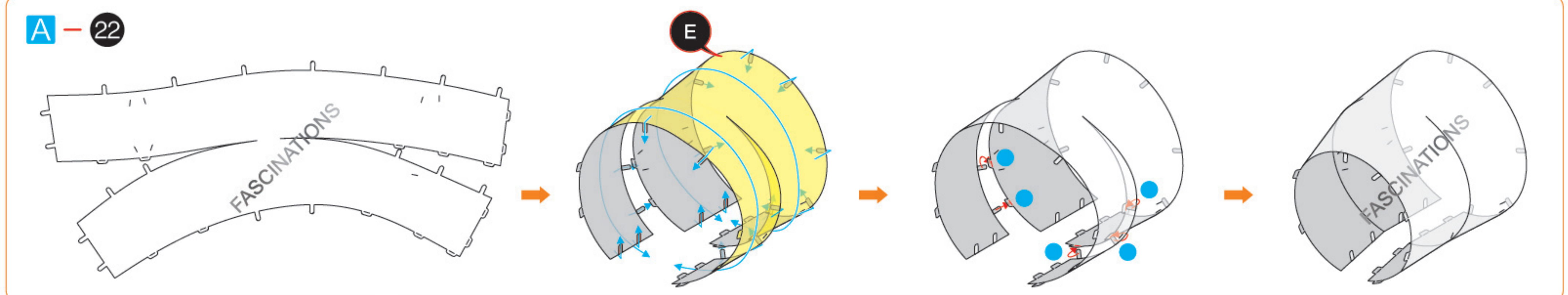
Step 5



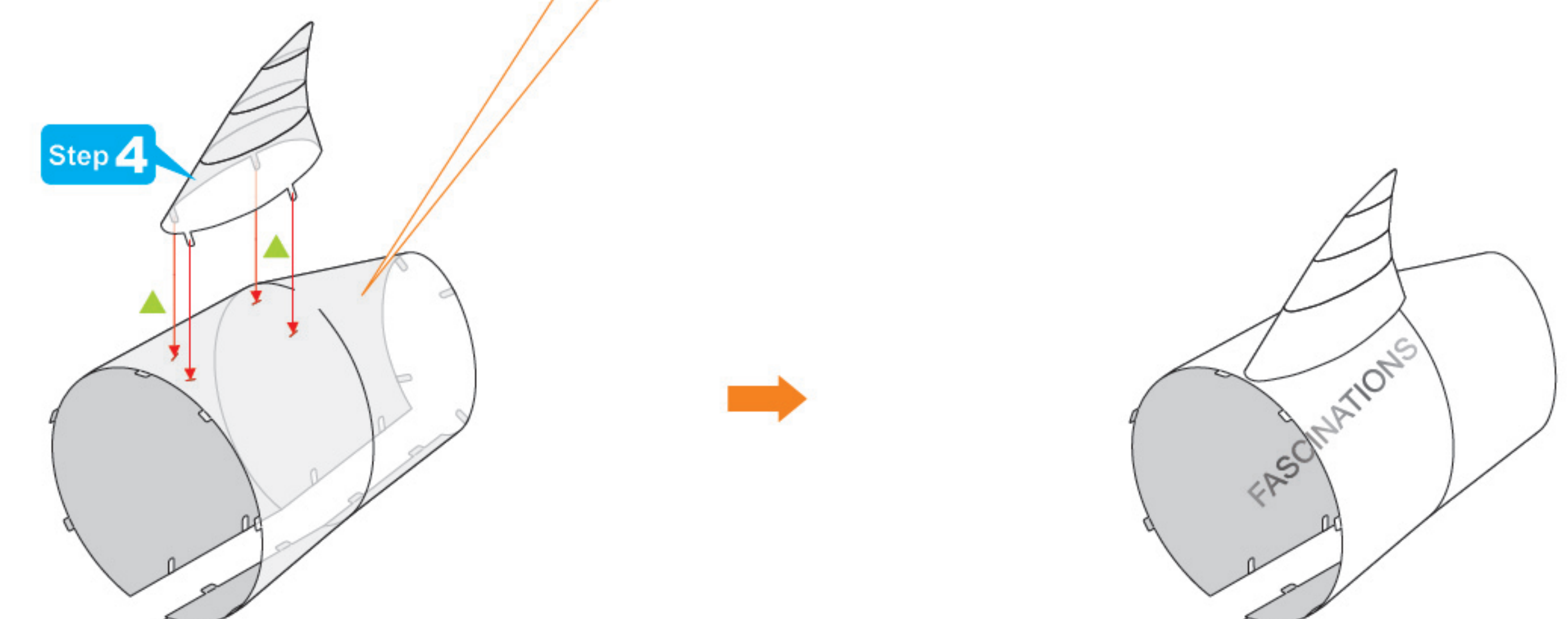
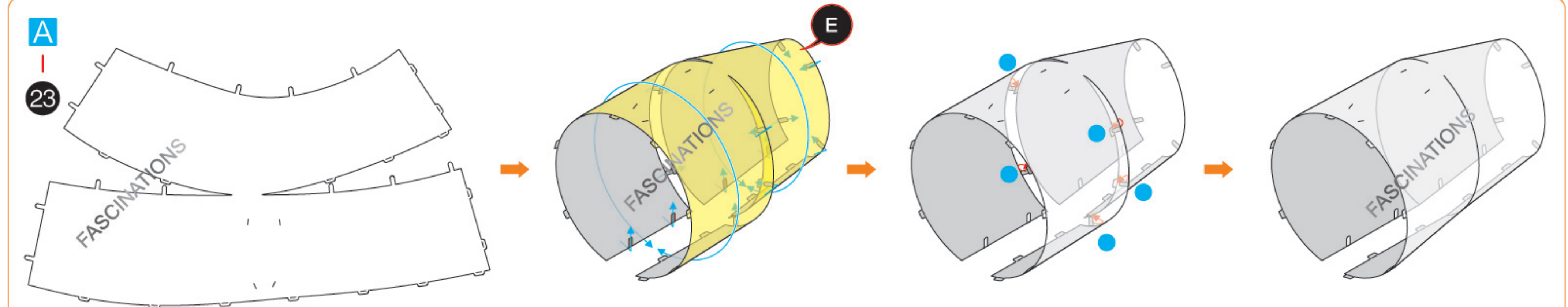
Step 6



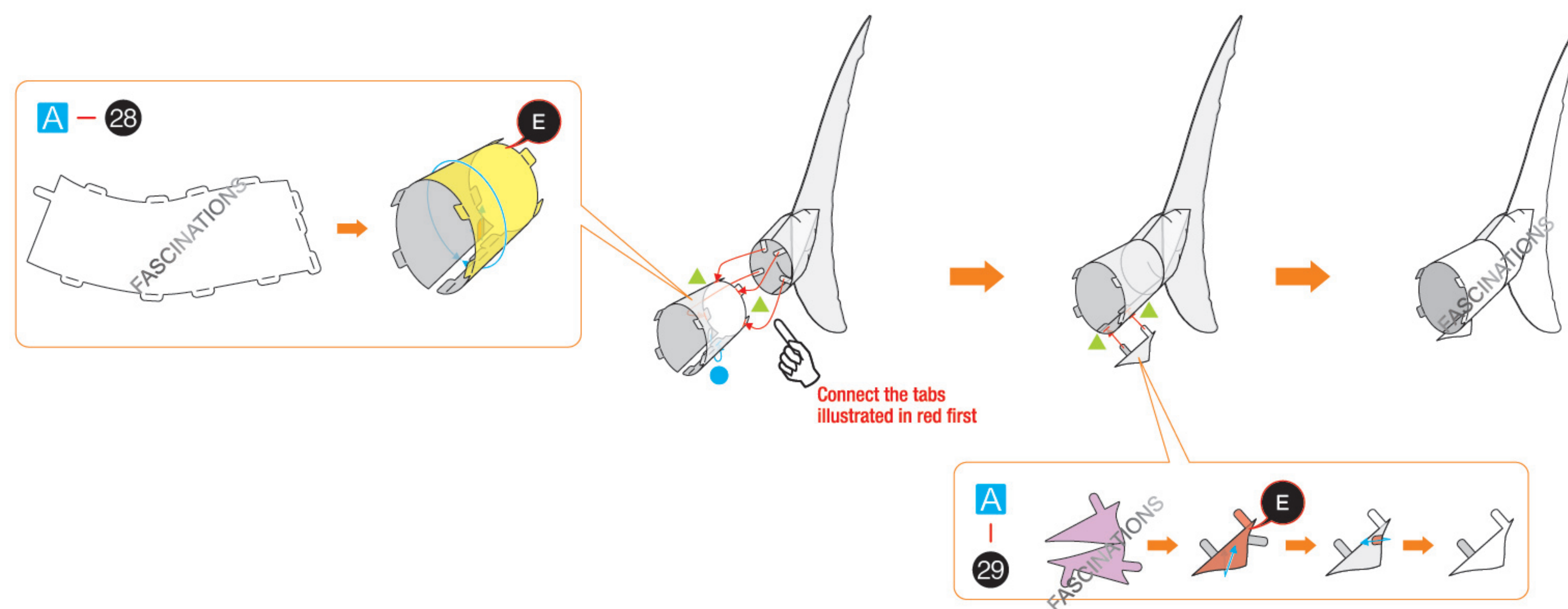
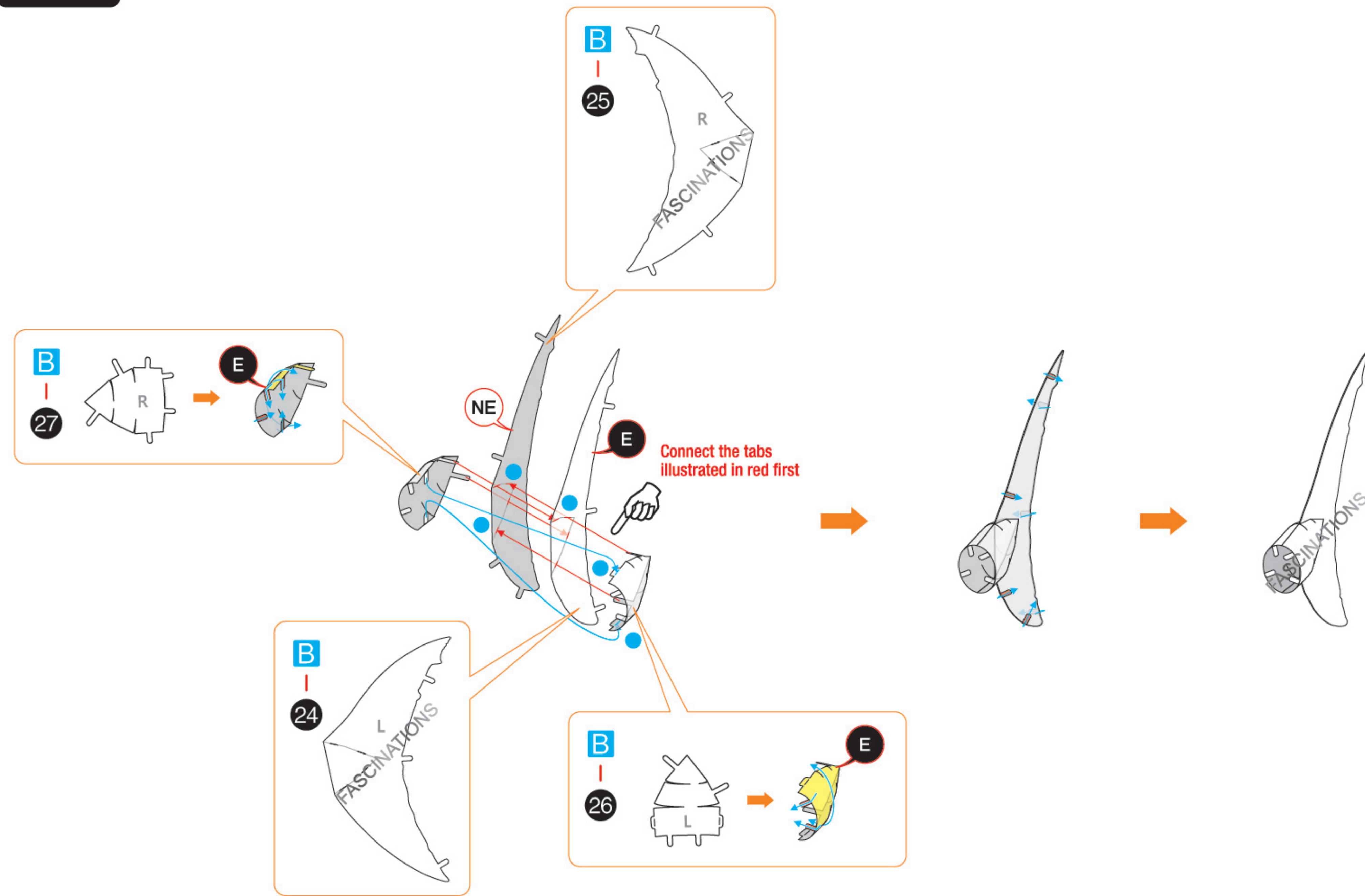
Step 7



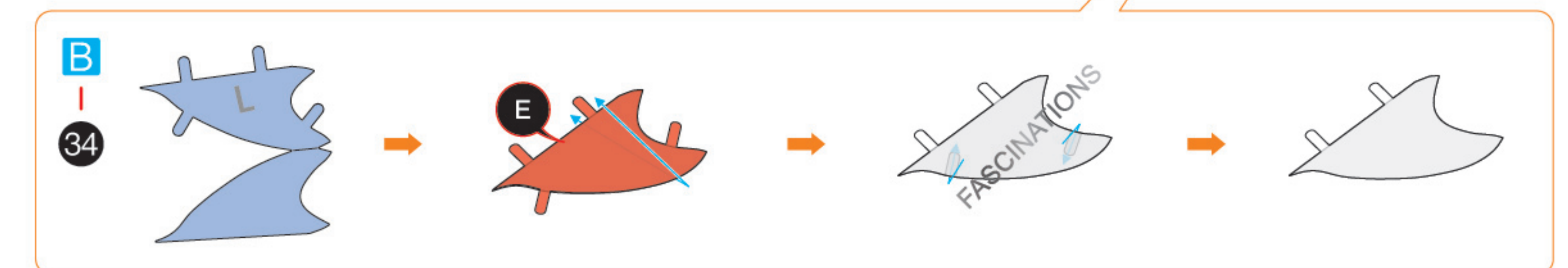
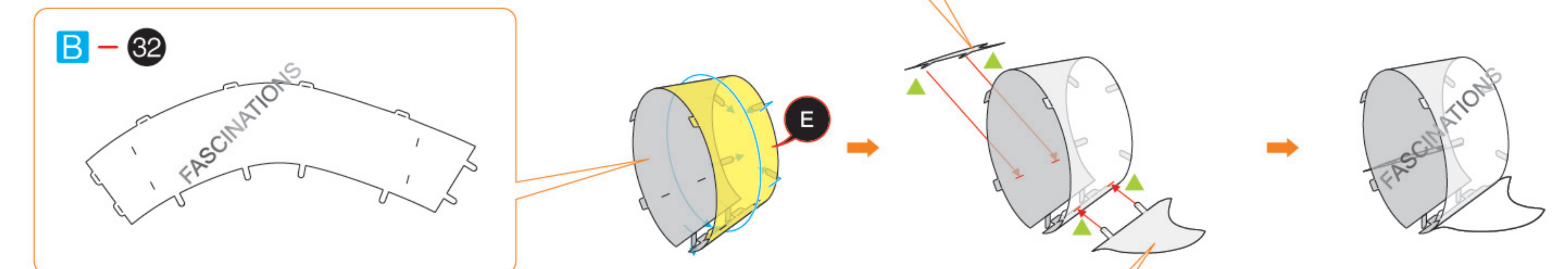
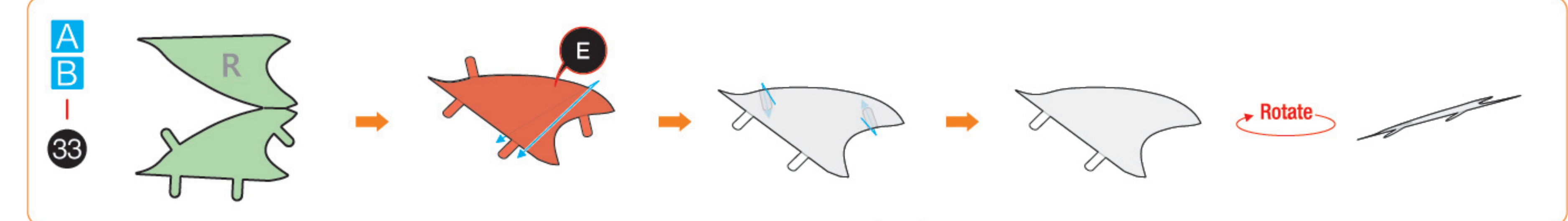
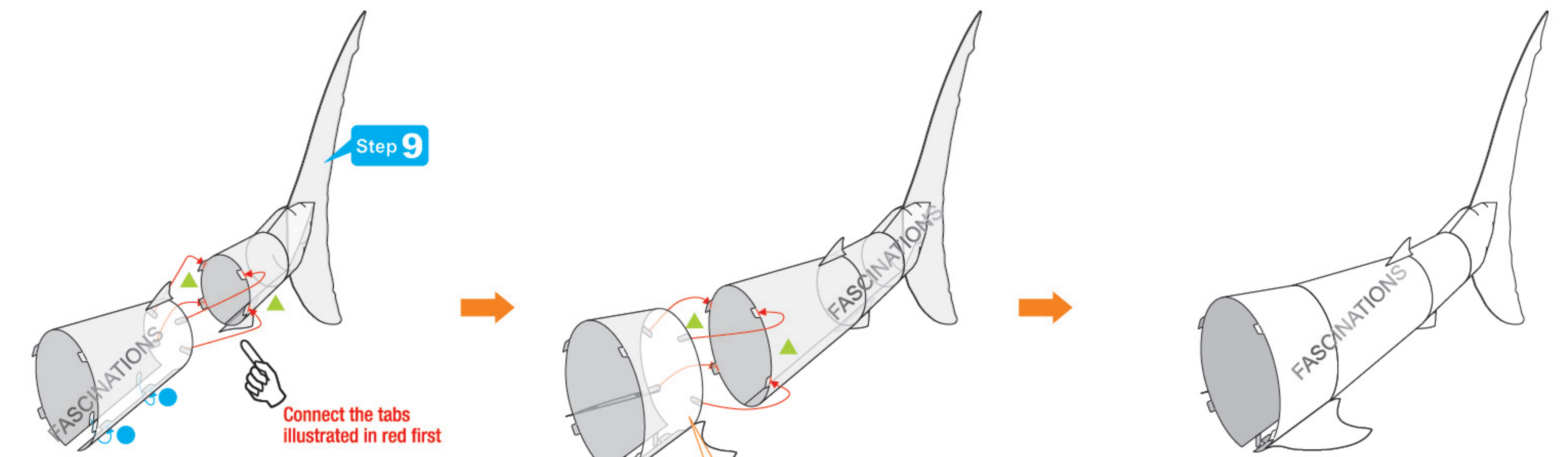
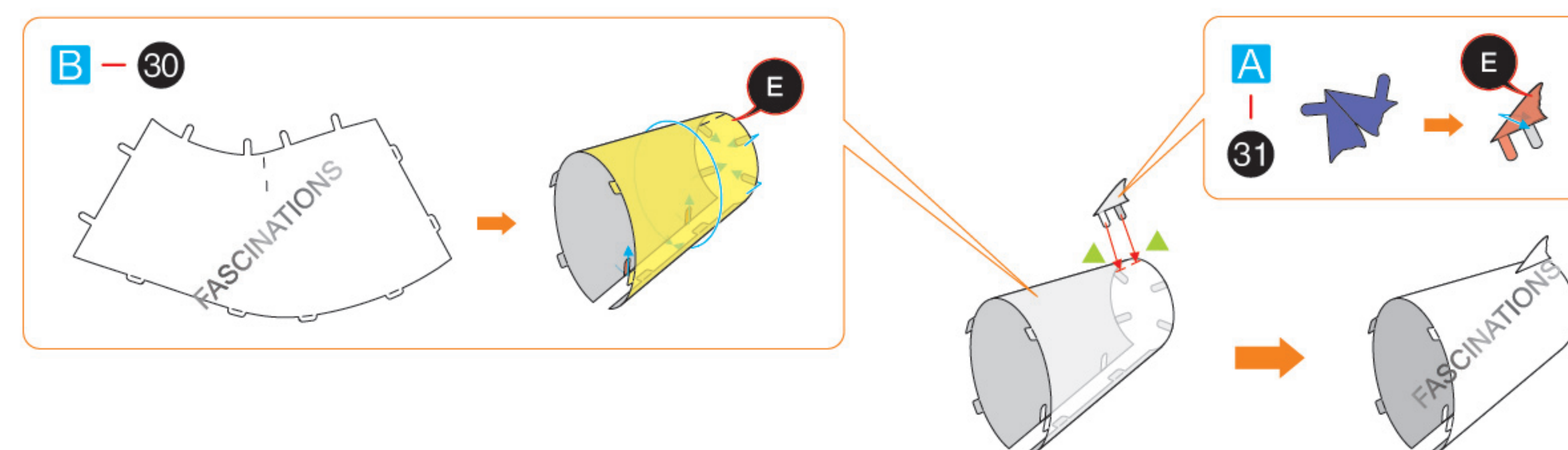
Step 8



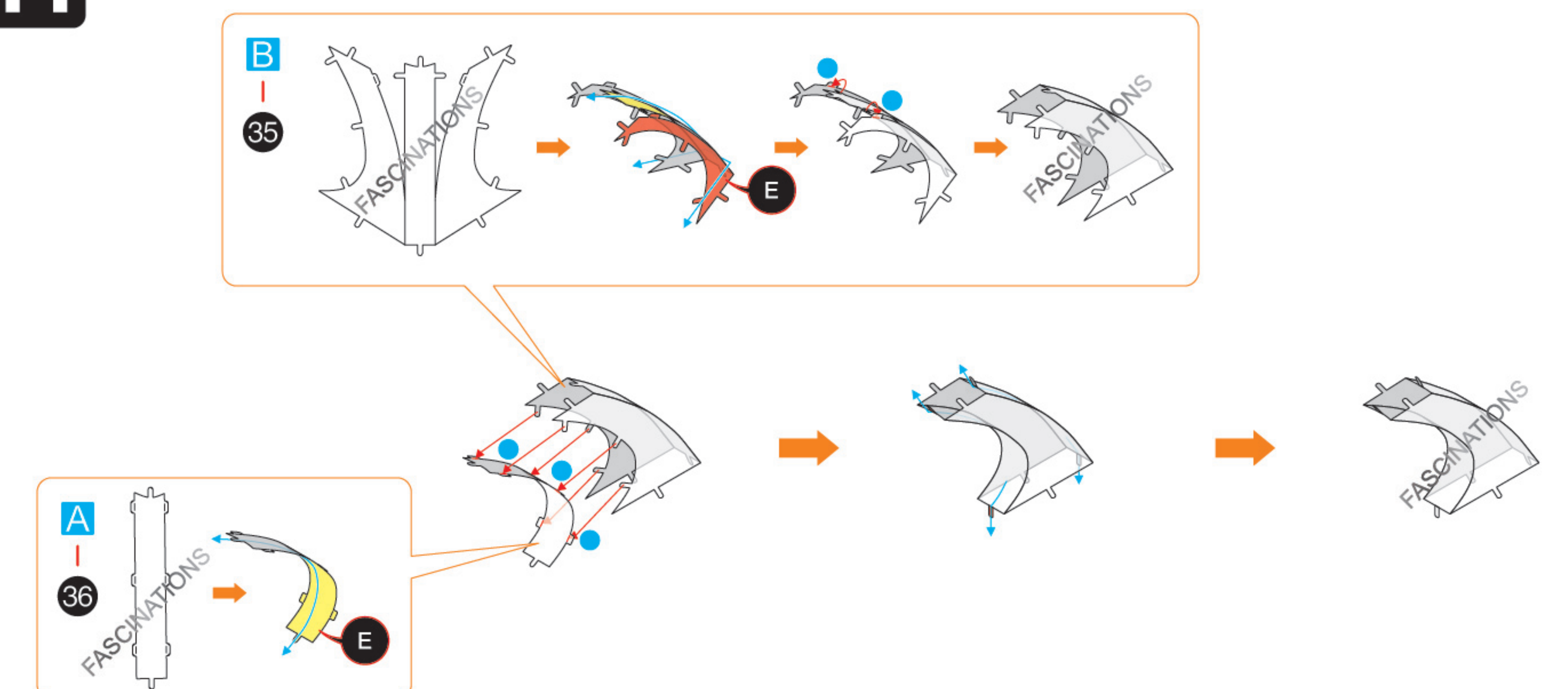
Step 9

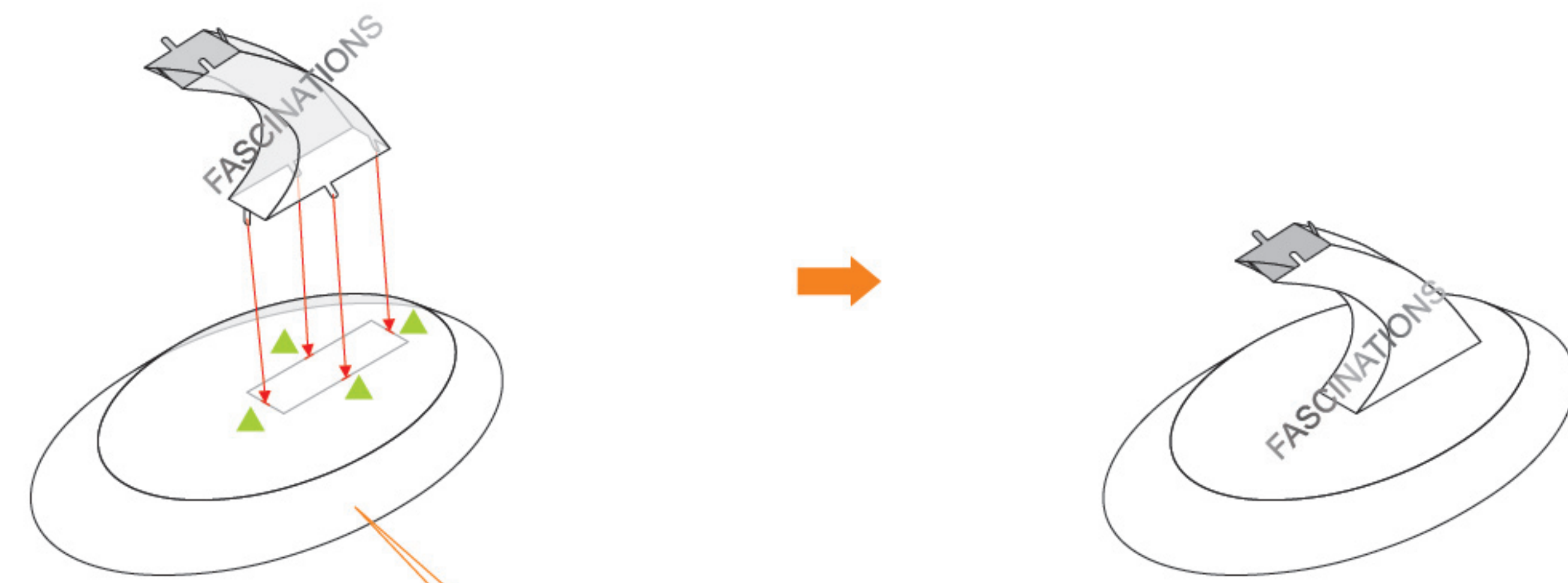


Step 10

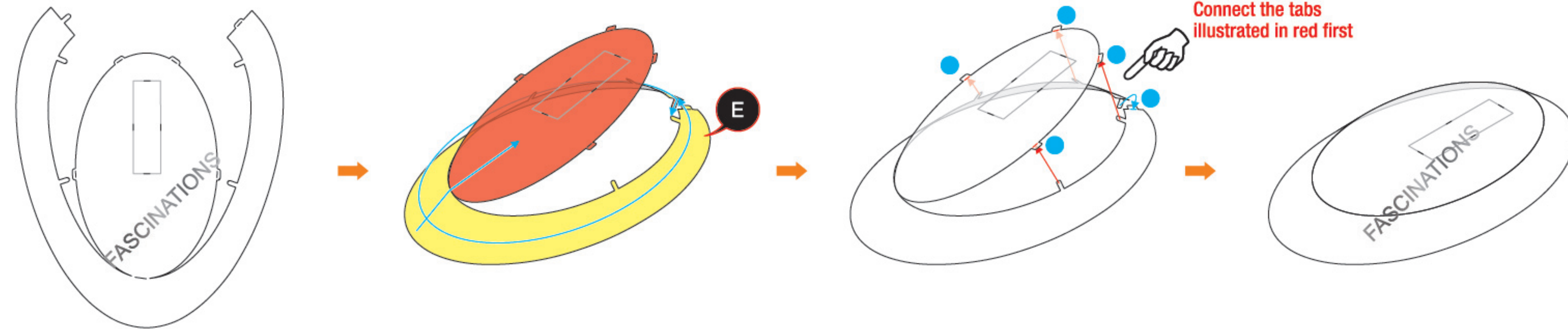


Step 11

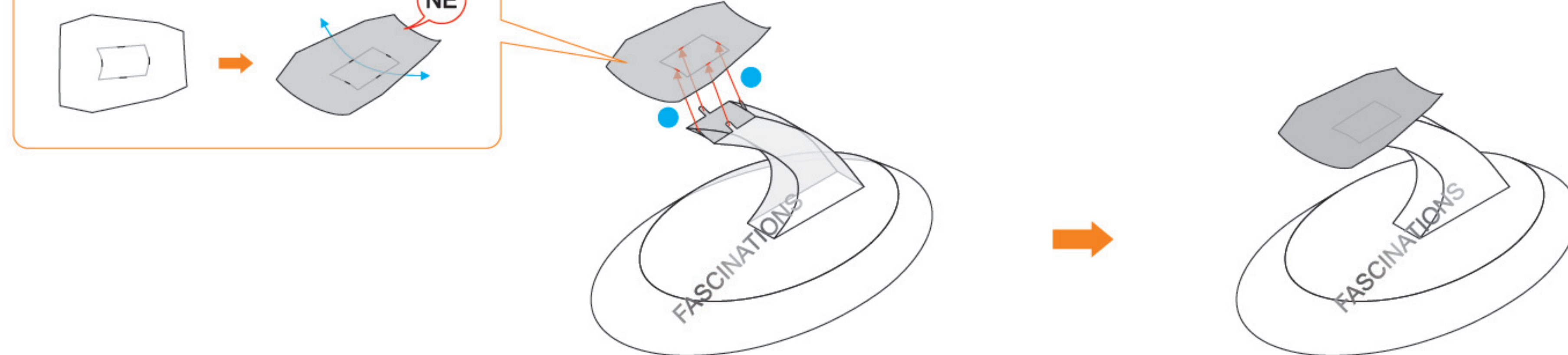




B - 37

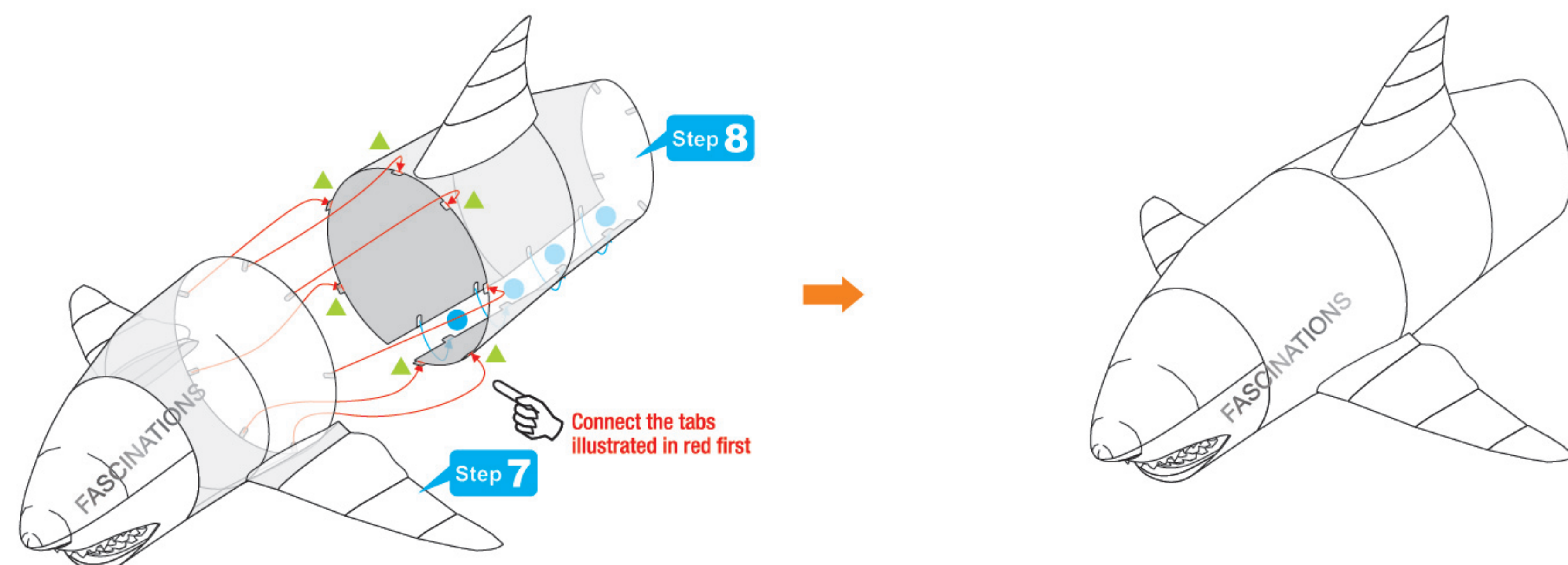
Connect the tabs
illustrated in red first

B - 38



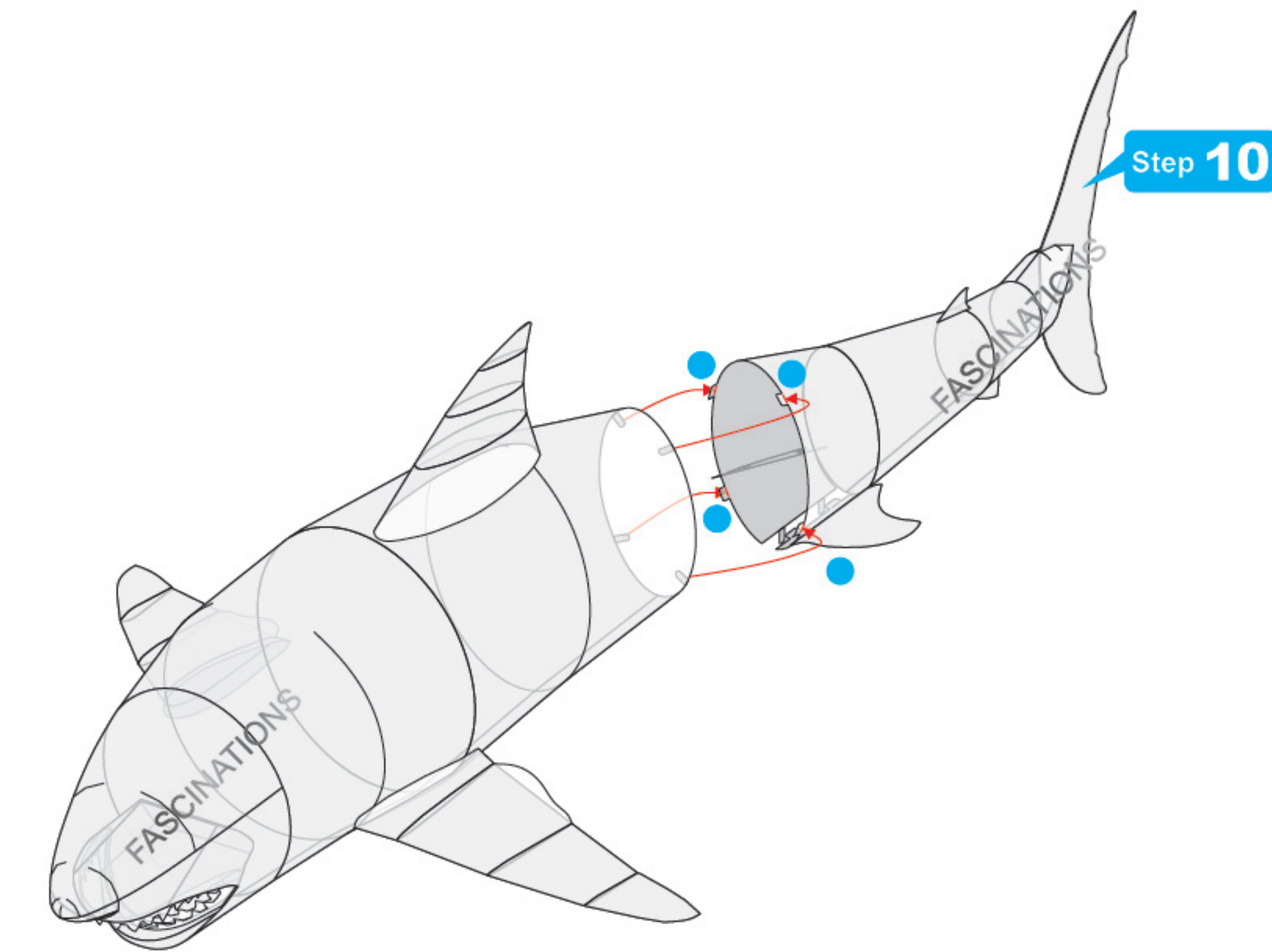
NE

Step 12

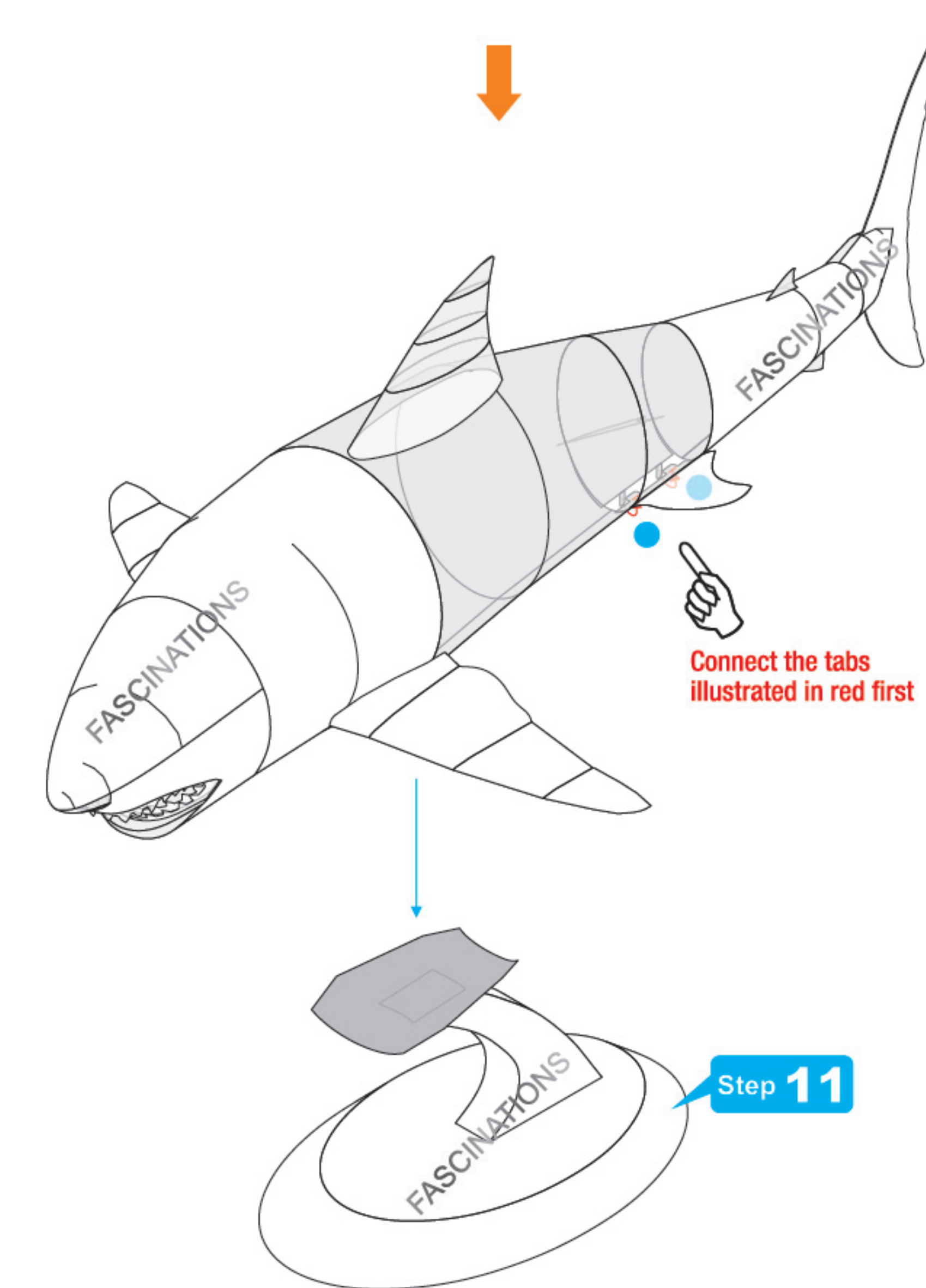


Step 8

Step 7

Connect the tabs
illustrated in red first

Step 10

Connect the tabs
illustrated in red first

Step 11

