

## B-17 FLYING FORTRESS ME1009

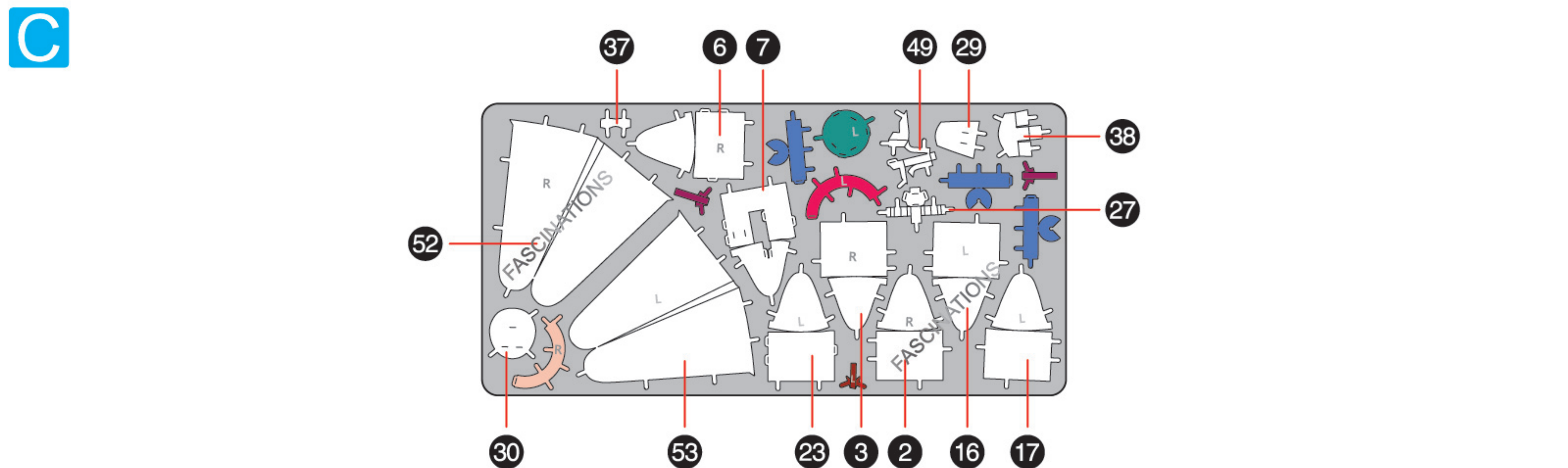
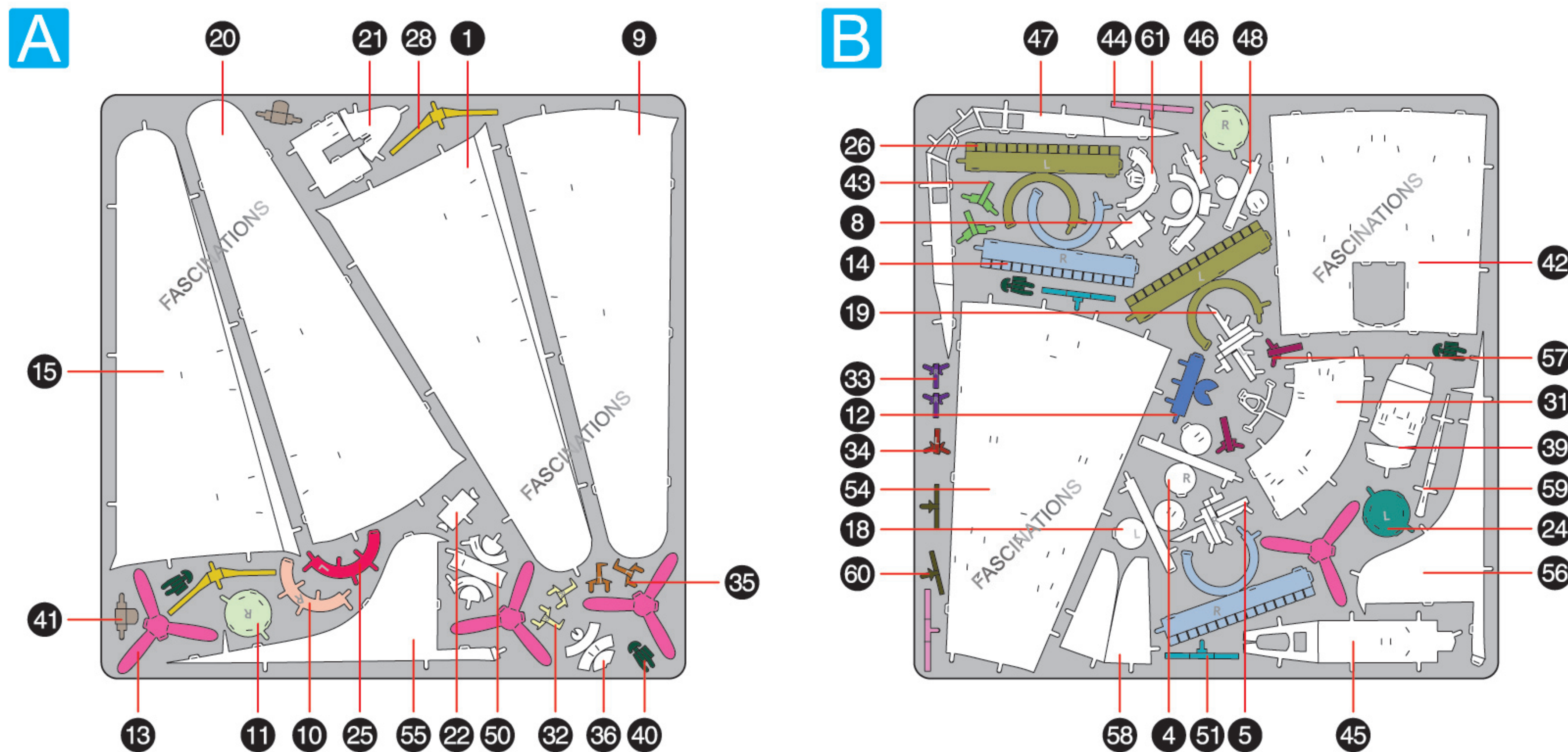


360°  
view

It is highly recommended that you visit  
[www.metal-earth.com/360/ME1009](http://www.metal-earth.com/360/ME1009)  
to see the completed model before assembling your own

### METAL SHEETS

Parts with same color are duplicates



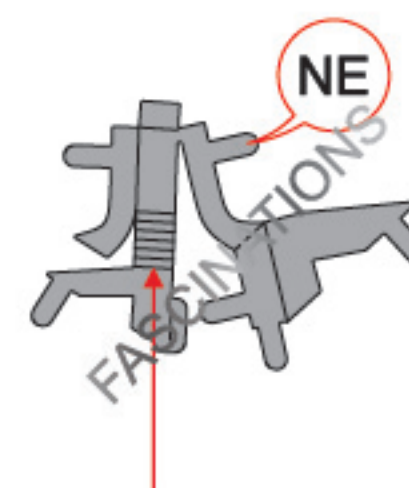
In order to avoid possible injury from sharp edges, please carefully discard the metal sheets after parts have been removed.



Go to [www.metal-earth.com/360/ME1009](http://www.metal-earth.com/360/ME1009) to see the zoomable PDF version of this instruction sheet

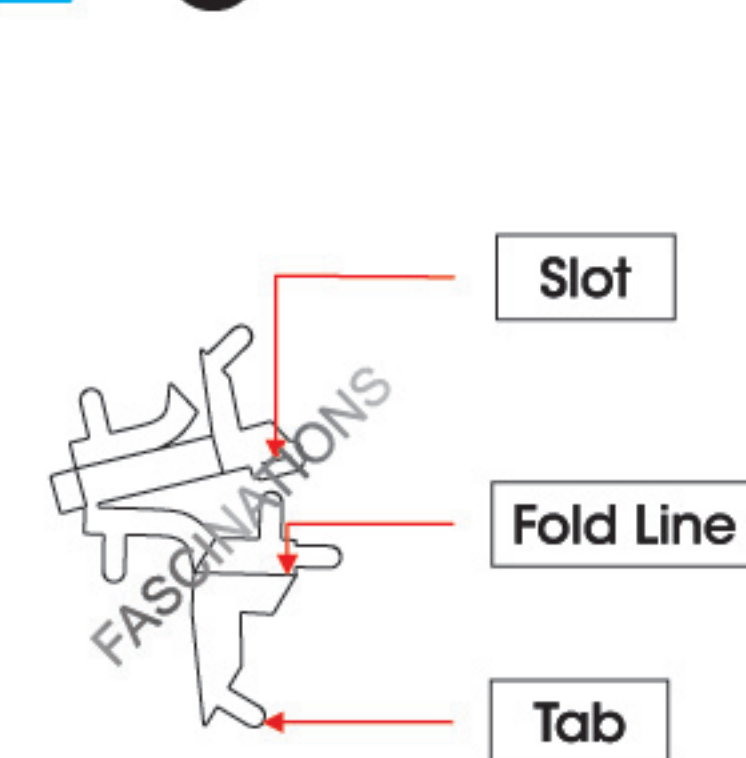
### TO CREATE THE BEST CONNECTIONS

C - 49



Consider these engraved stripes as supporting features for the bend

C - 49



#### Legends:

- E** Engraved/ Color side
- NE** Non - engraved/ Silver side
- Attention point
- Insert tab and bend 90 degrees
- Insert tab and twist 90 degrees

#### Assembly tip:

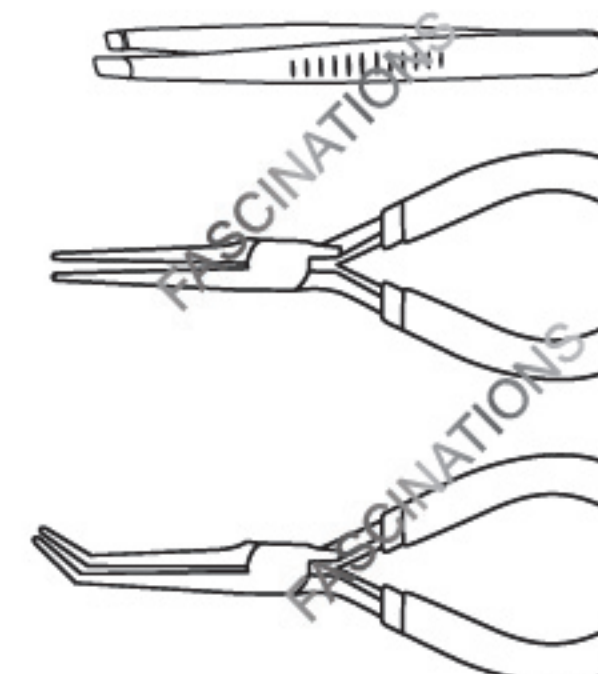
If needed, slightly twist tabs to hold parts together then untwist and bend them down for a nice finish.

- Yellow areas should be curled
- Red areas should be folded

#### Recommended tools:

- Wire cutters: helpful for taking parts from the metal sheets.

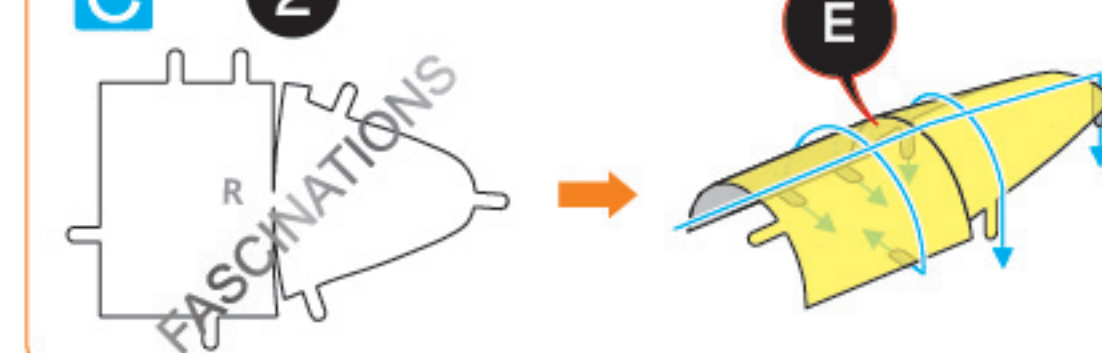
- Tweezers or needle nose pliers: helpful for folding parts, bending and twisting tabs.



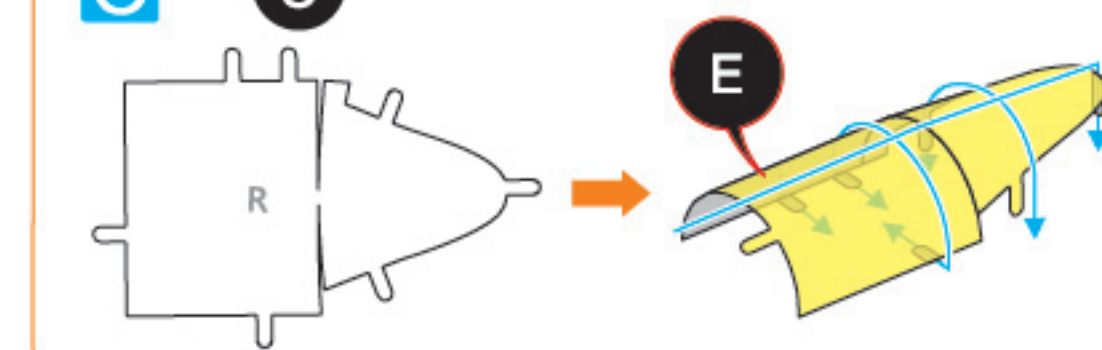
### ASSEMBLY FLOW CHART

#### Step 1

C - 2

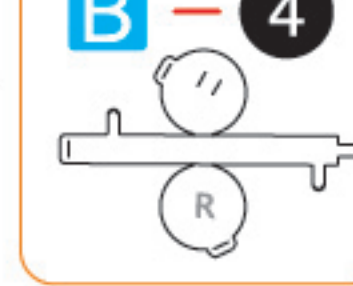


C - 3



#### Step 2

B - 4



Connect the tabs illustrated in red first

Connect the tabs illustrated in red first

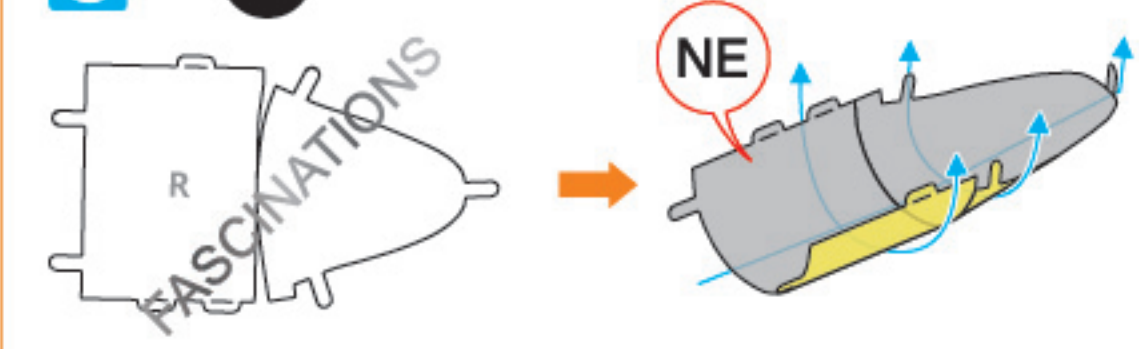
Rotate

B - 5

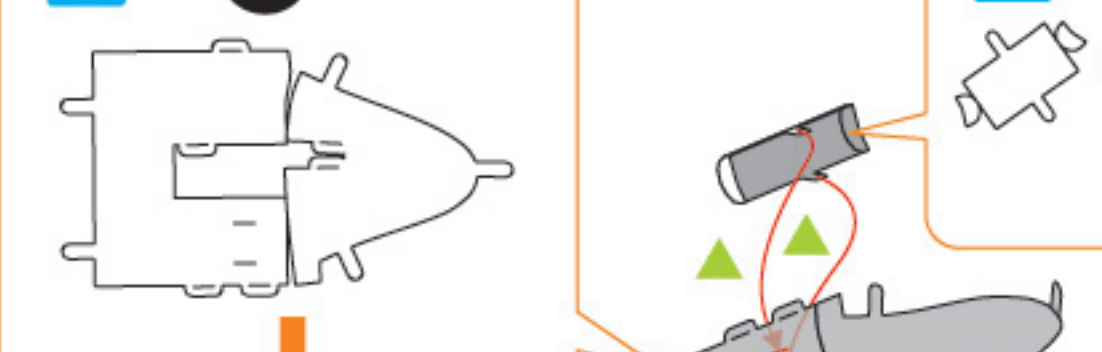


#### Step 3

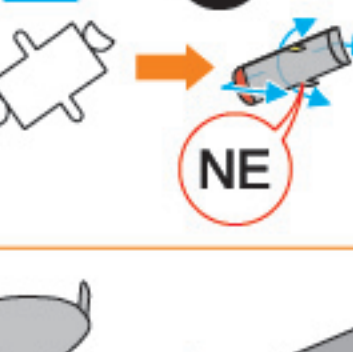
C - 6



C - 7

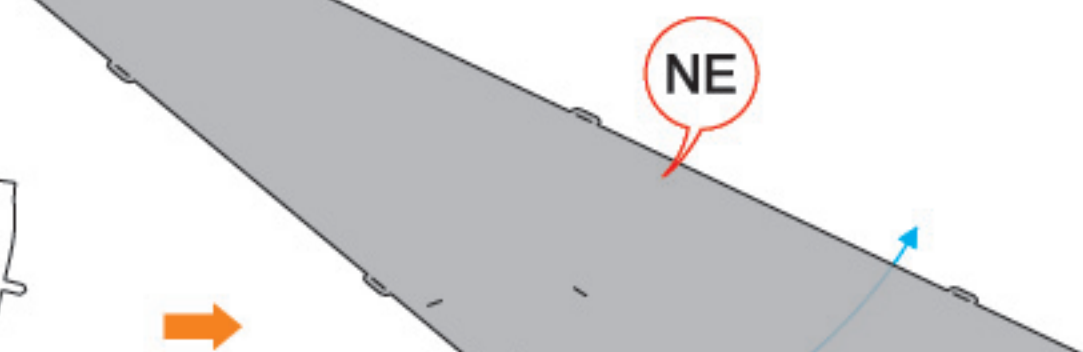


B - 8

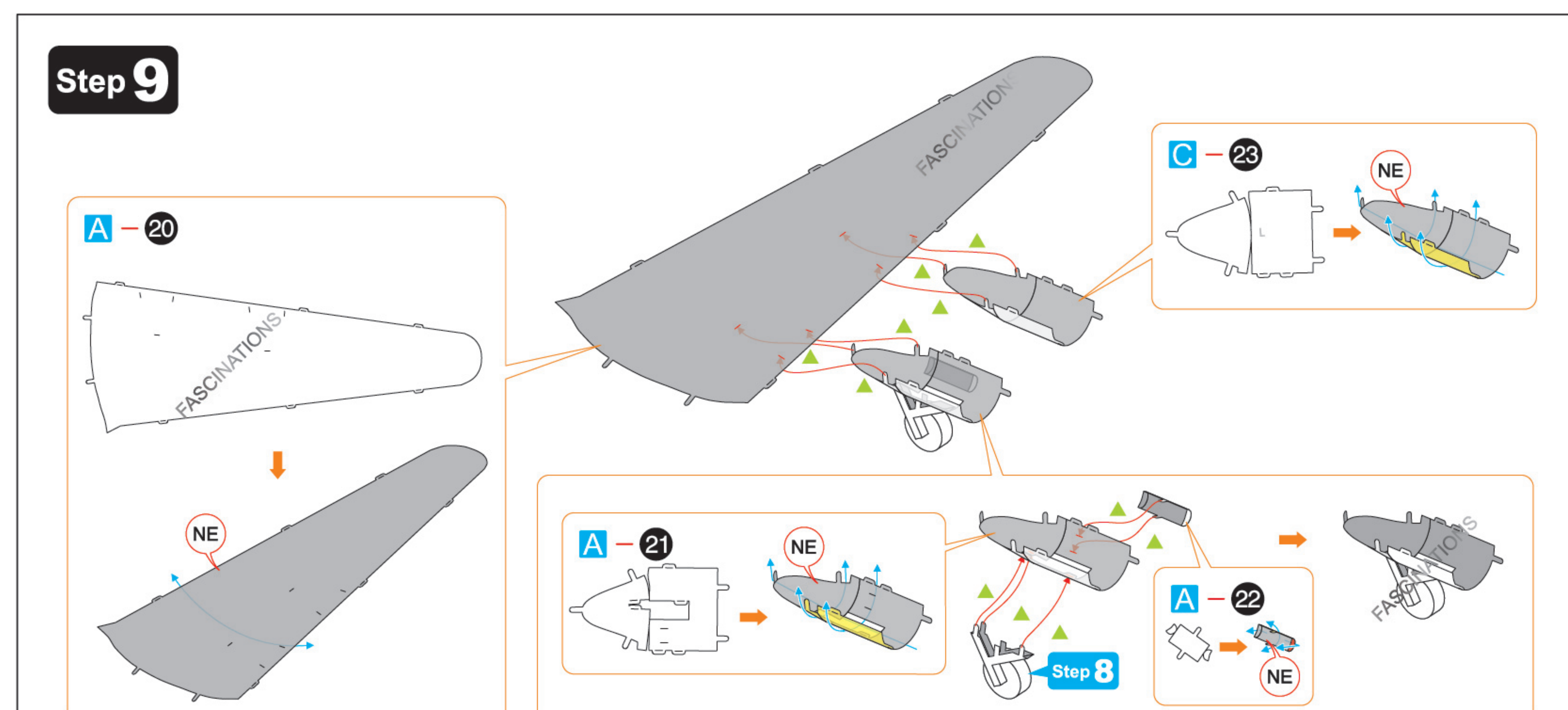
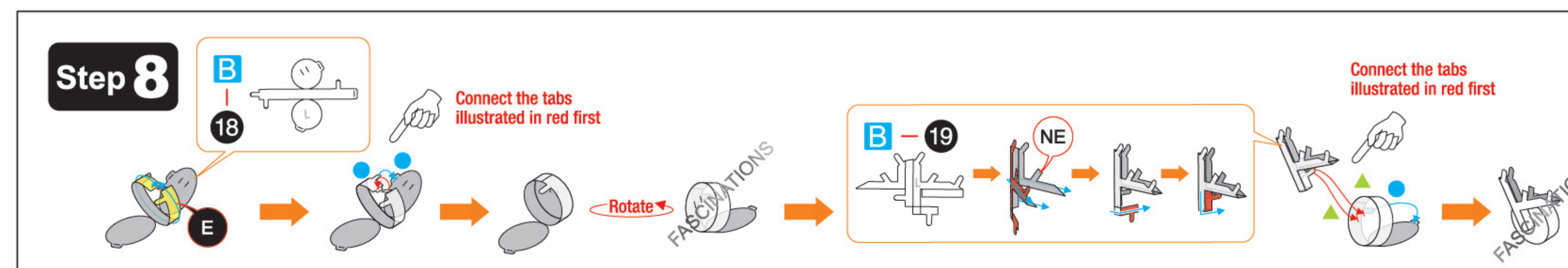
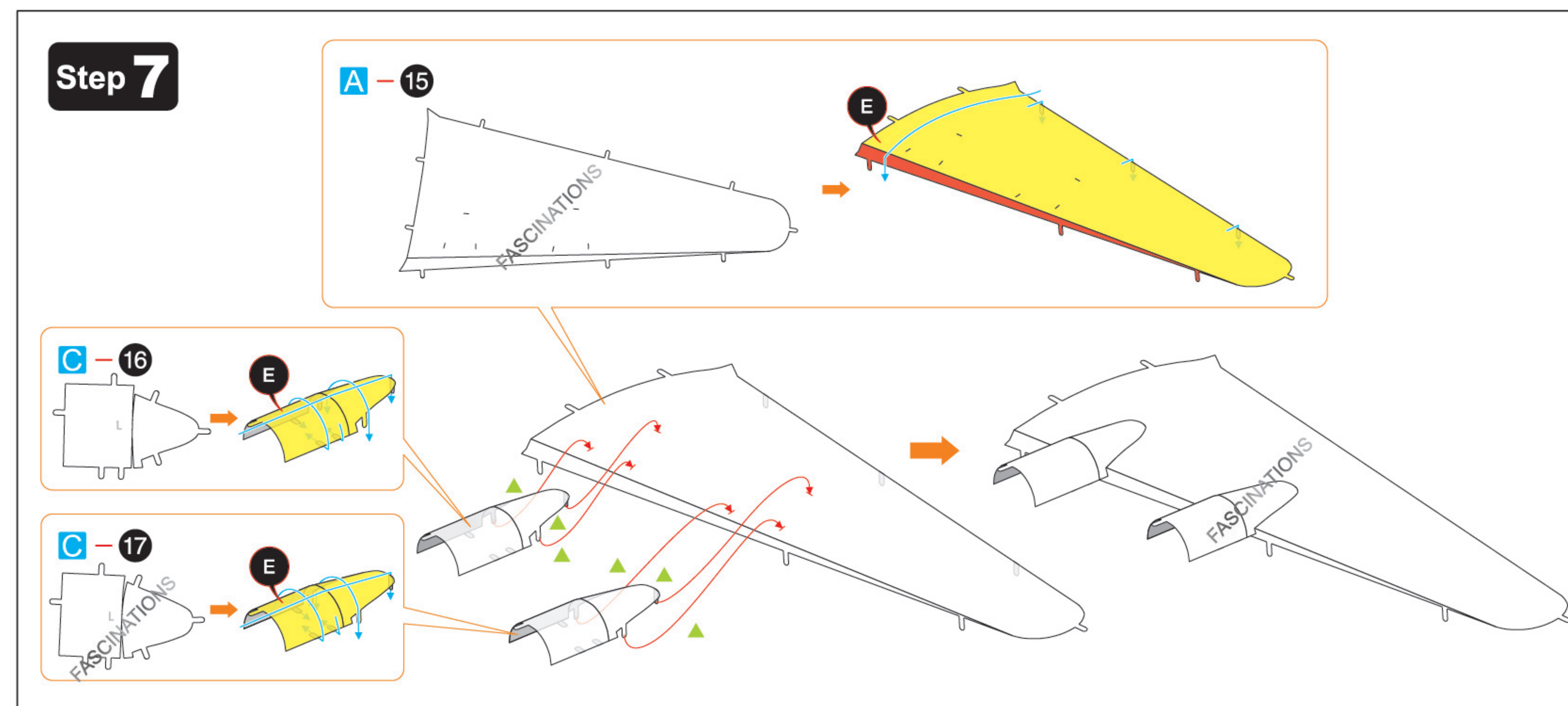
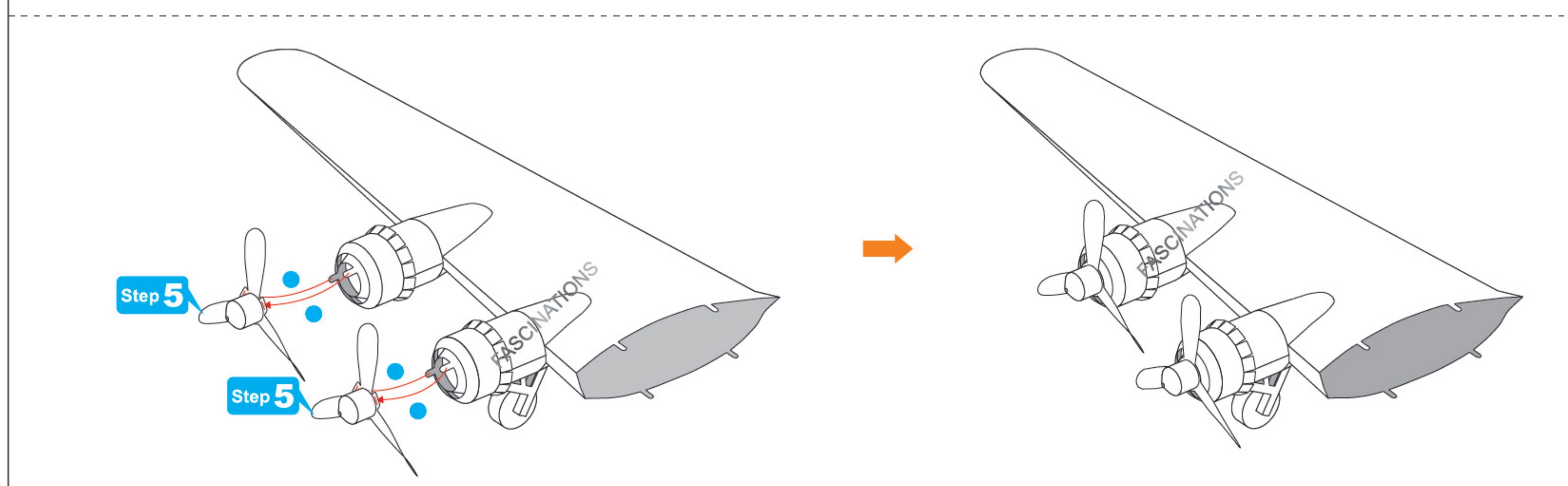
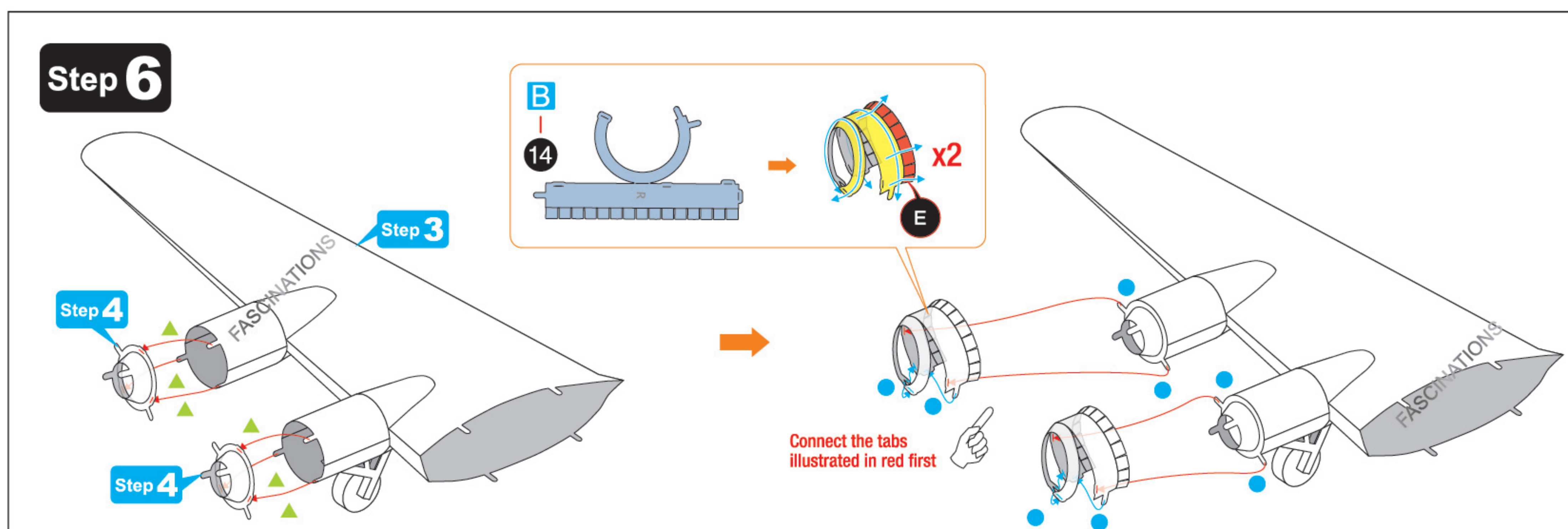
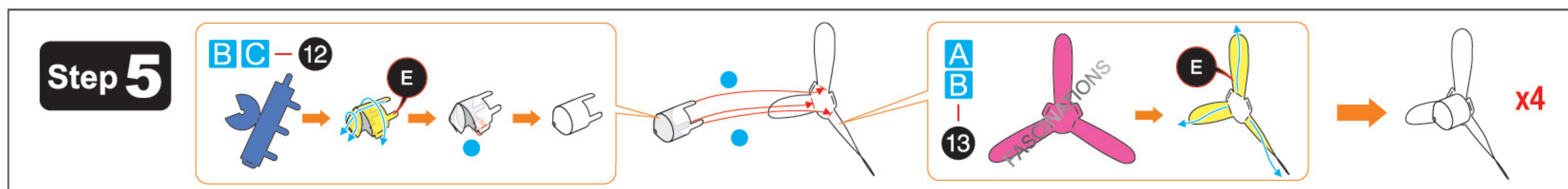
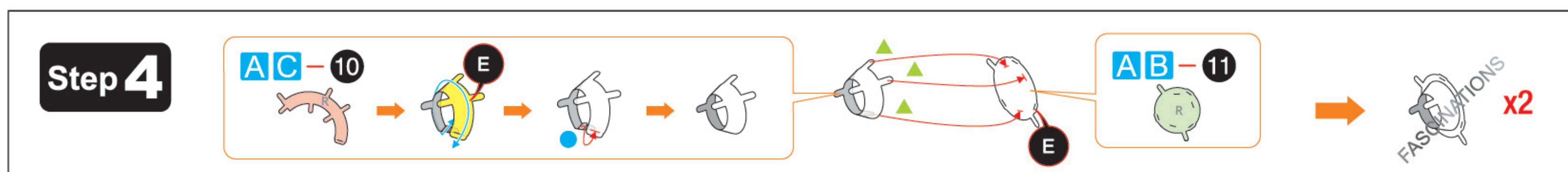
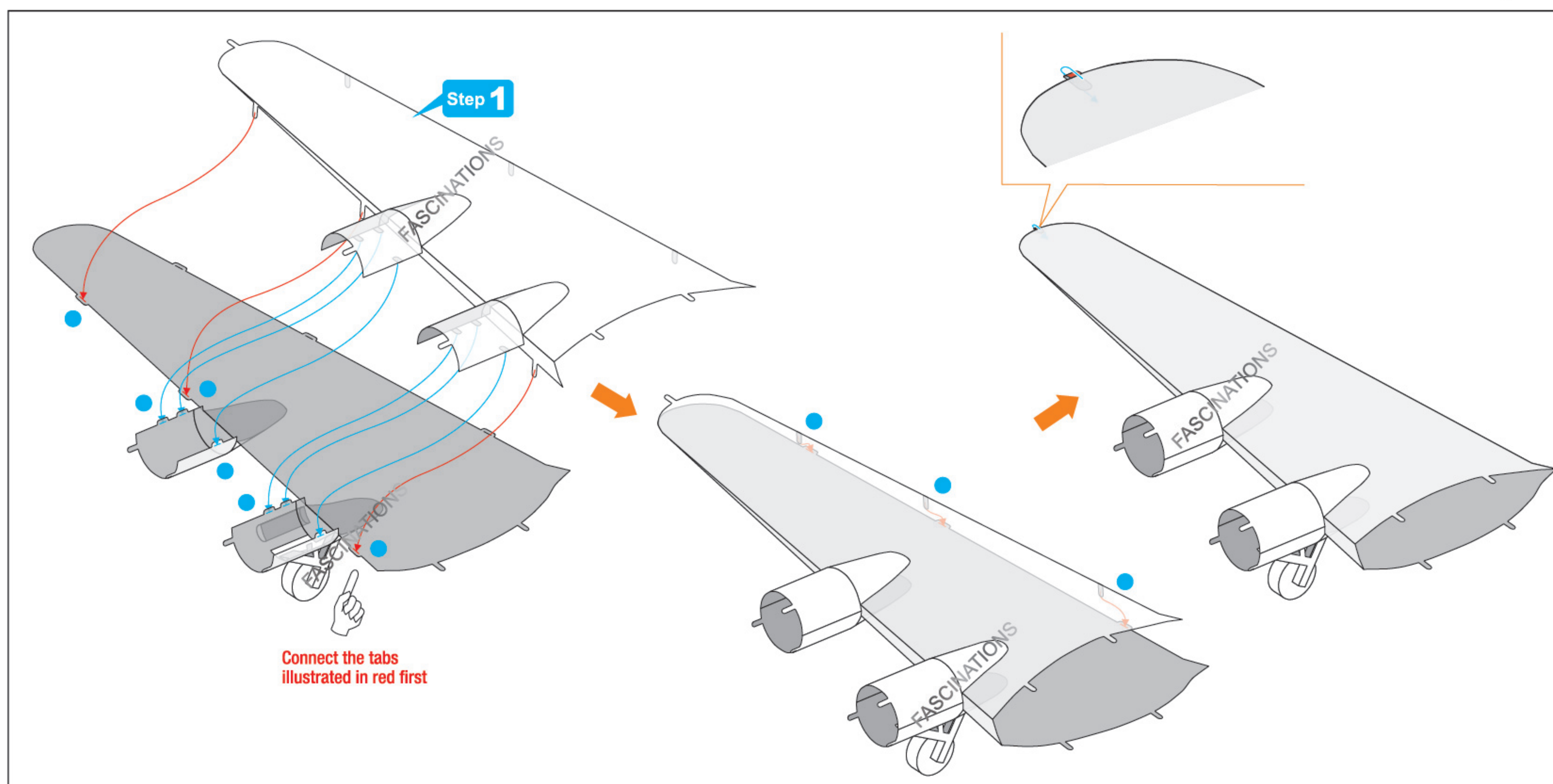


Step 2

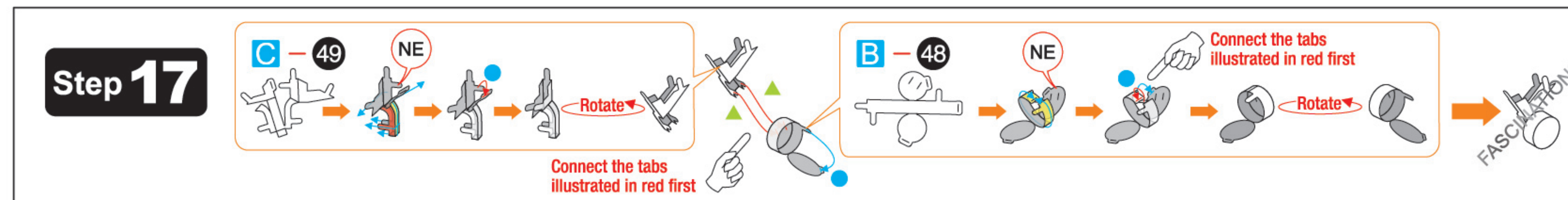
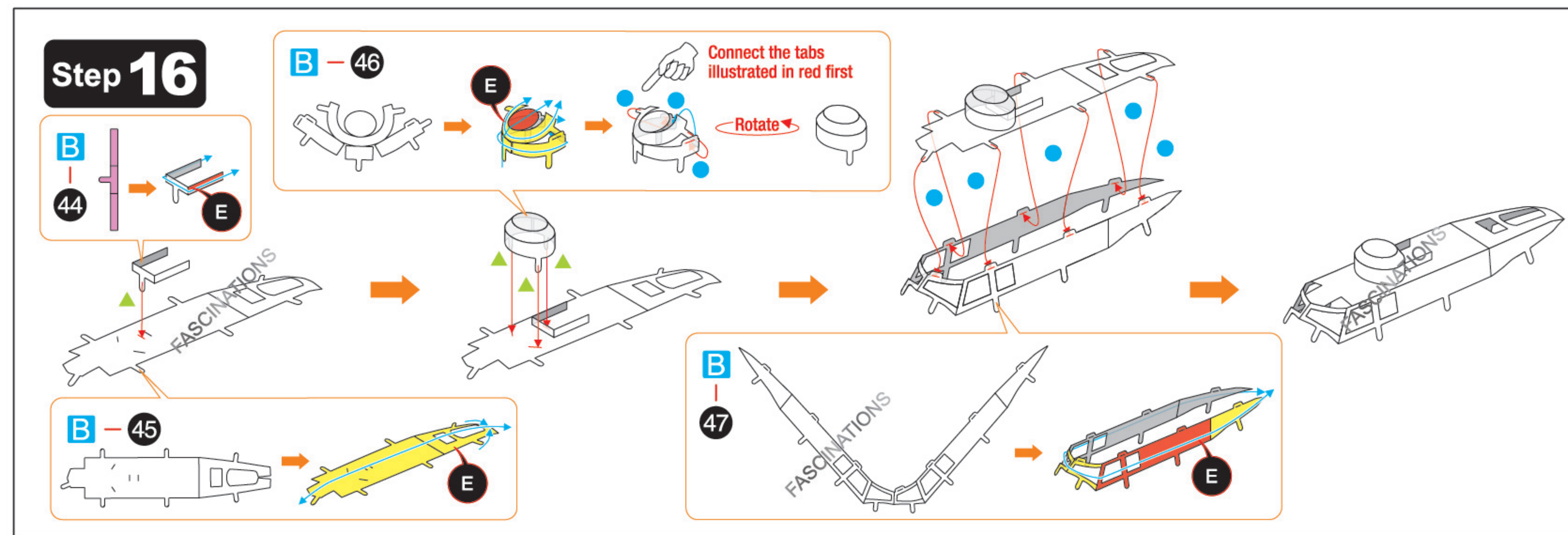
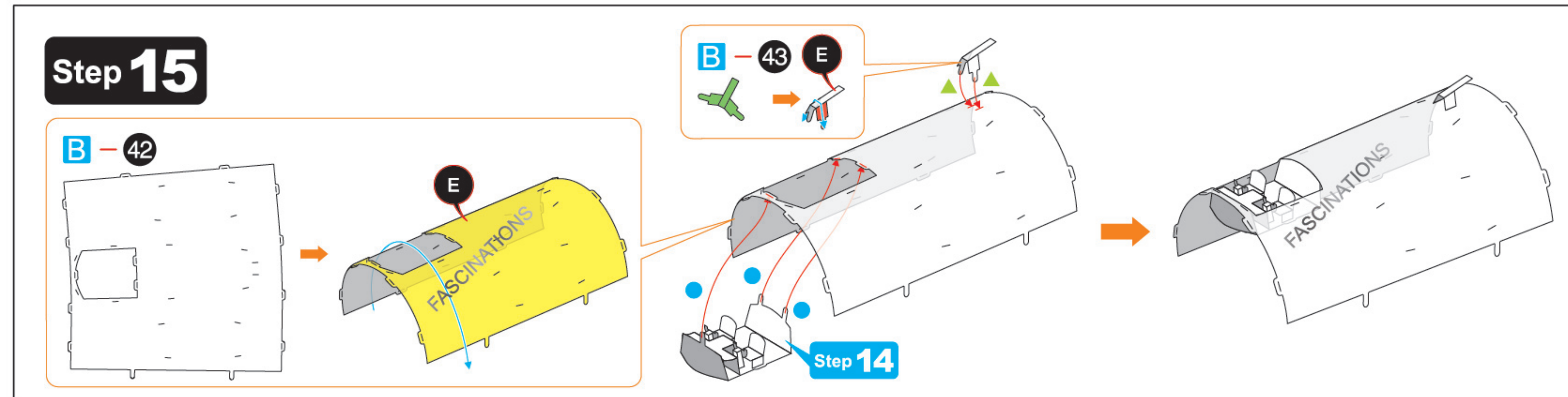
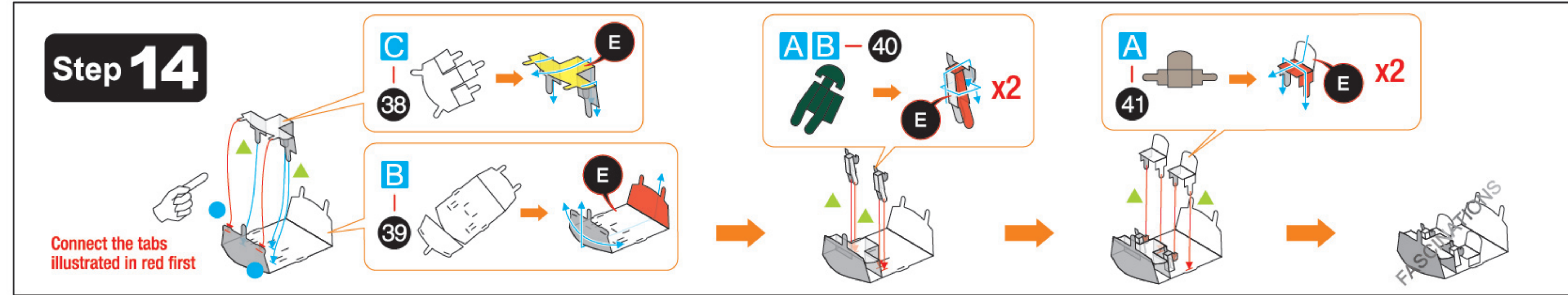
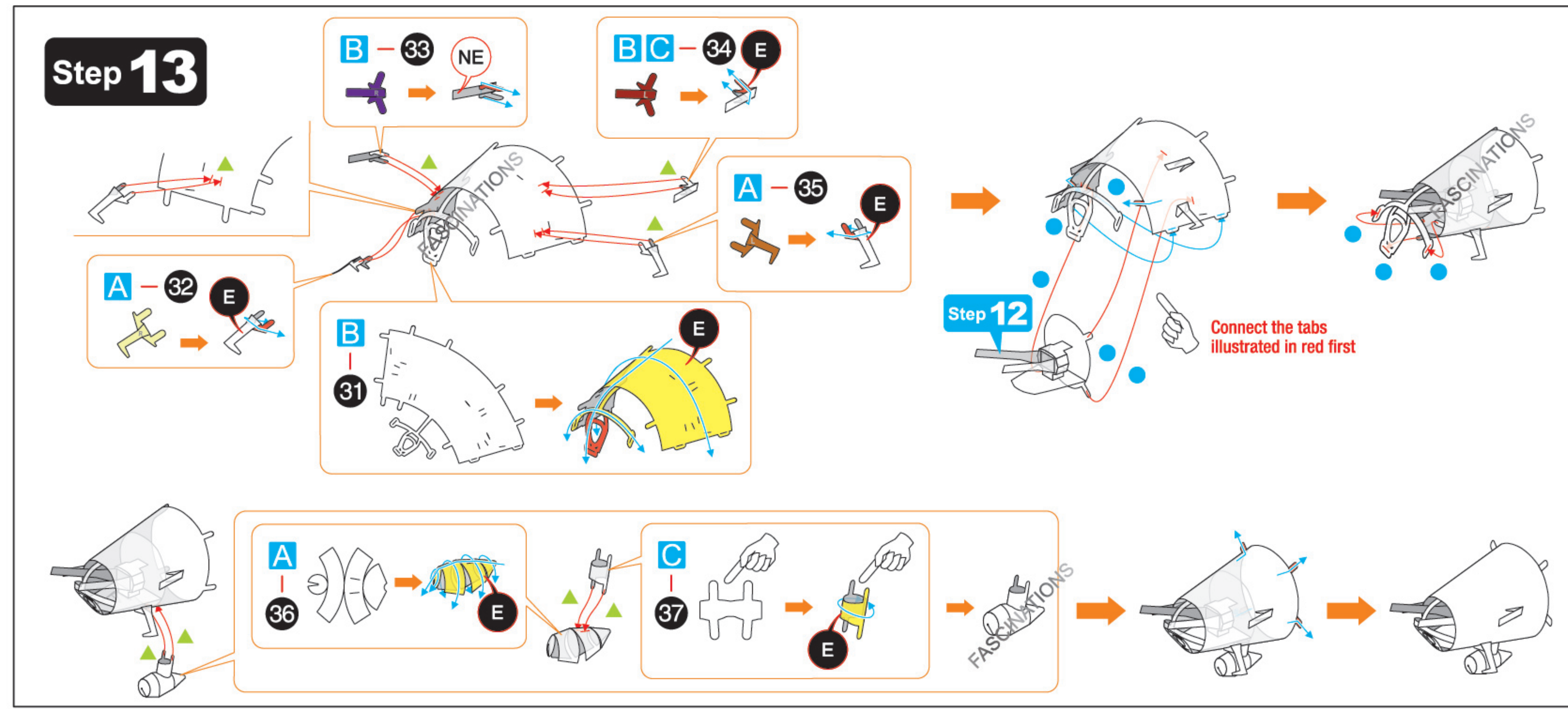
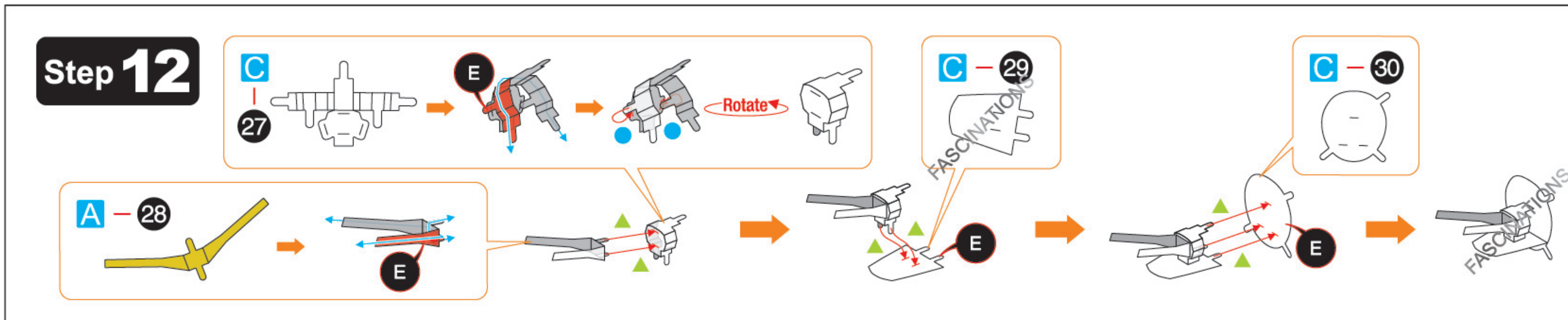
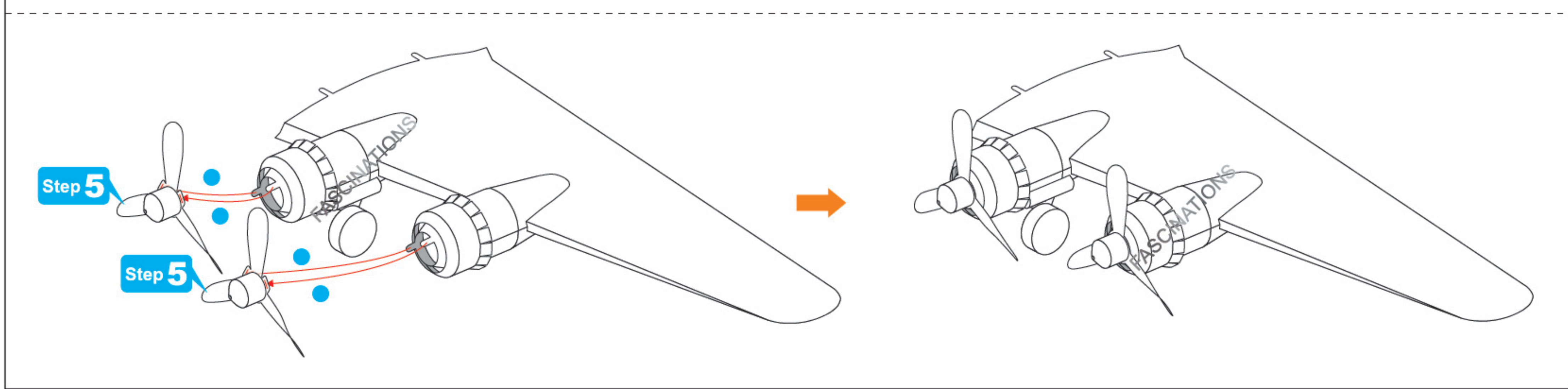
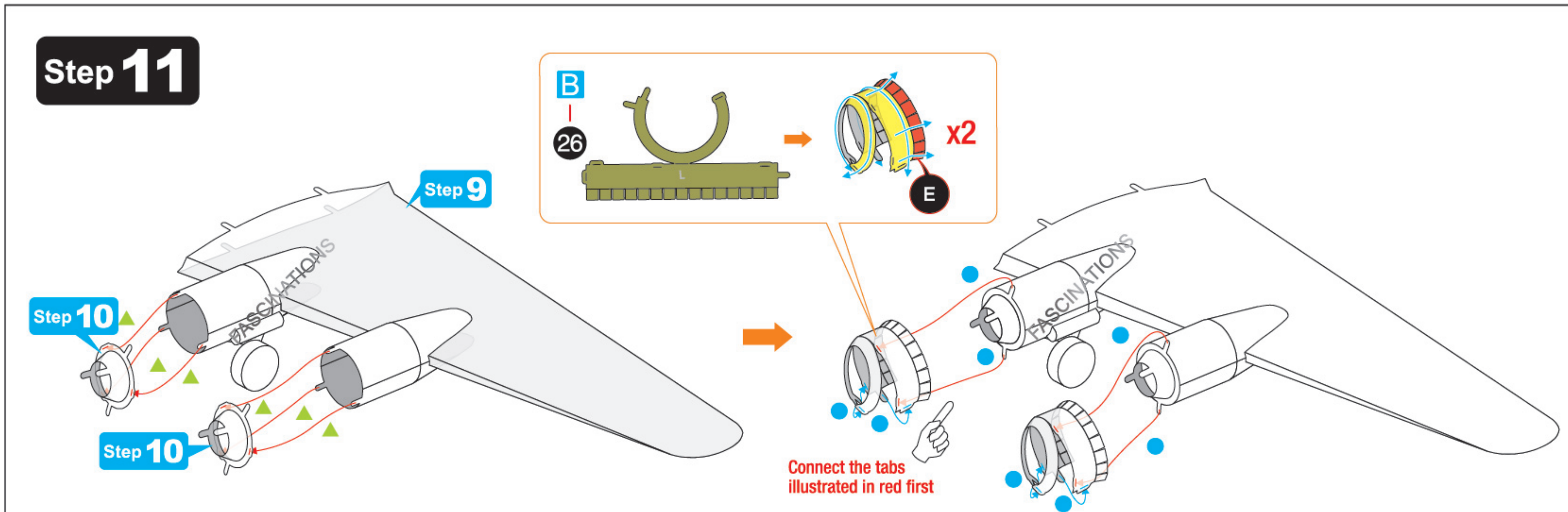
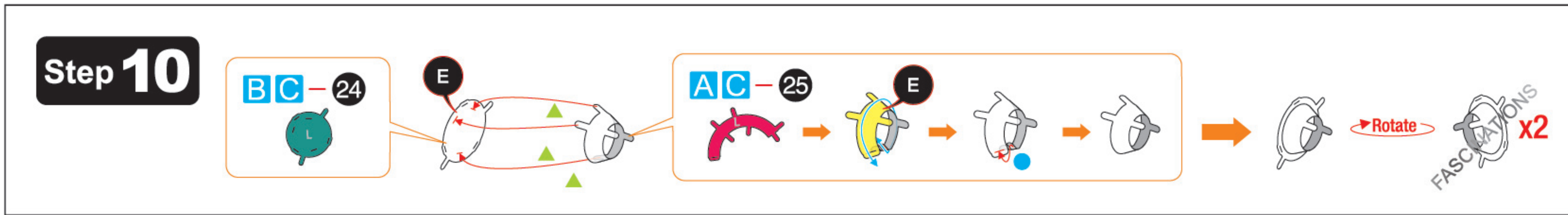
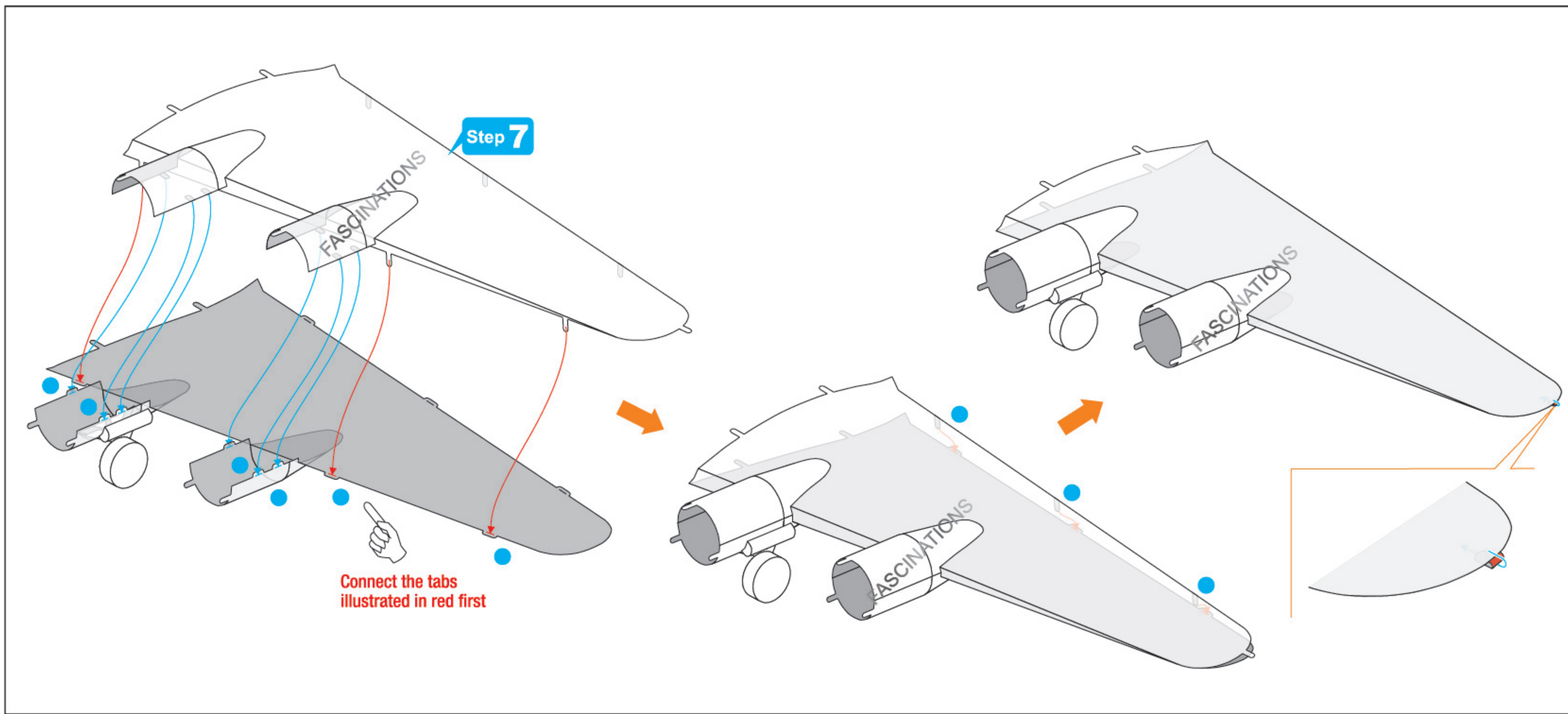
A - 9









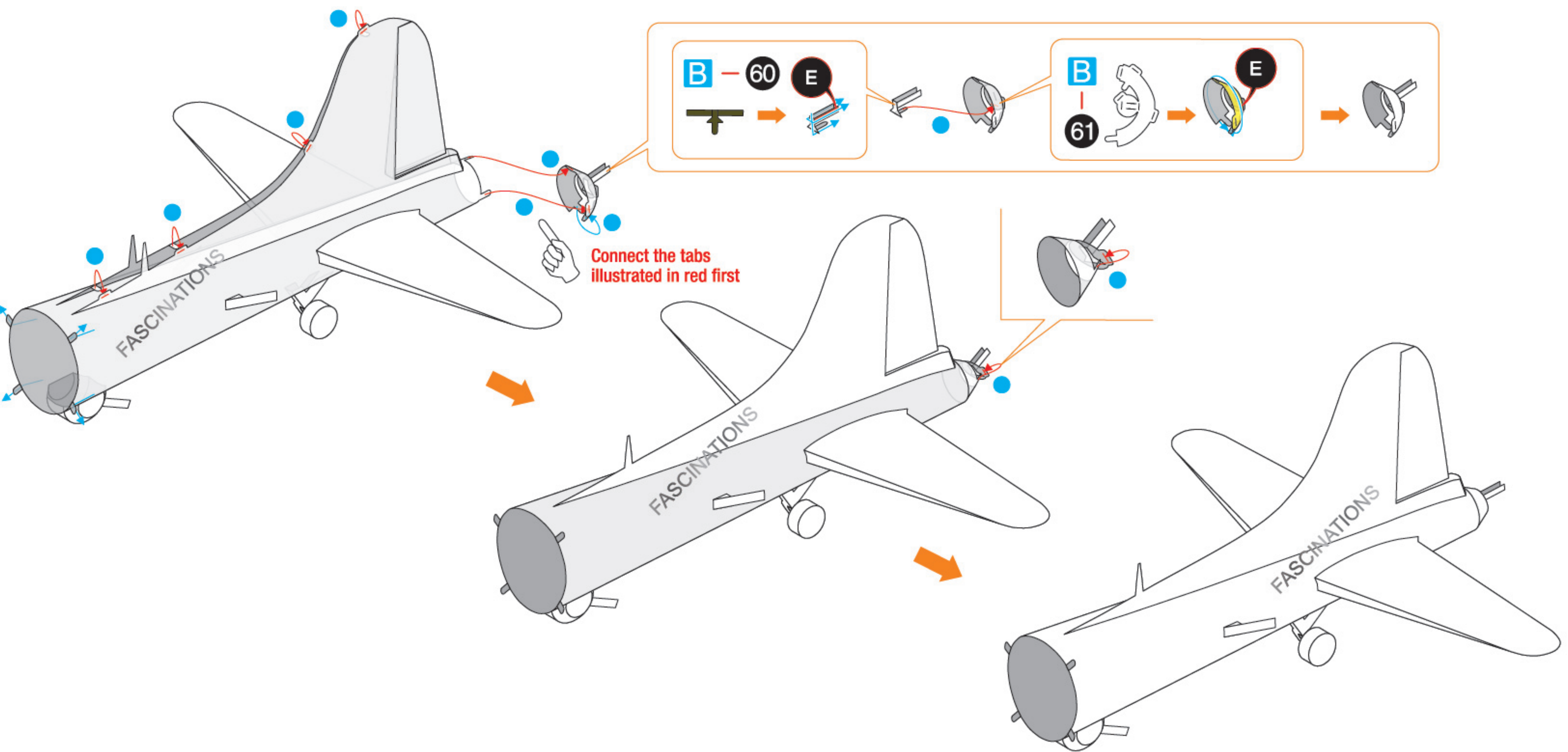
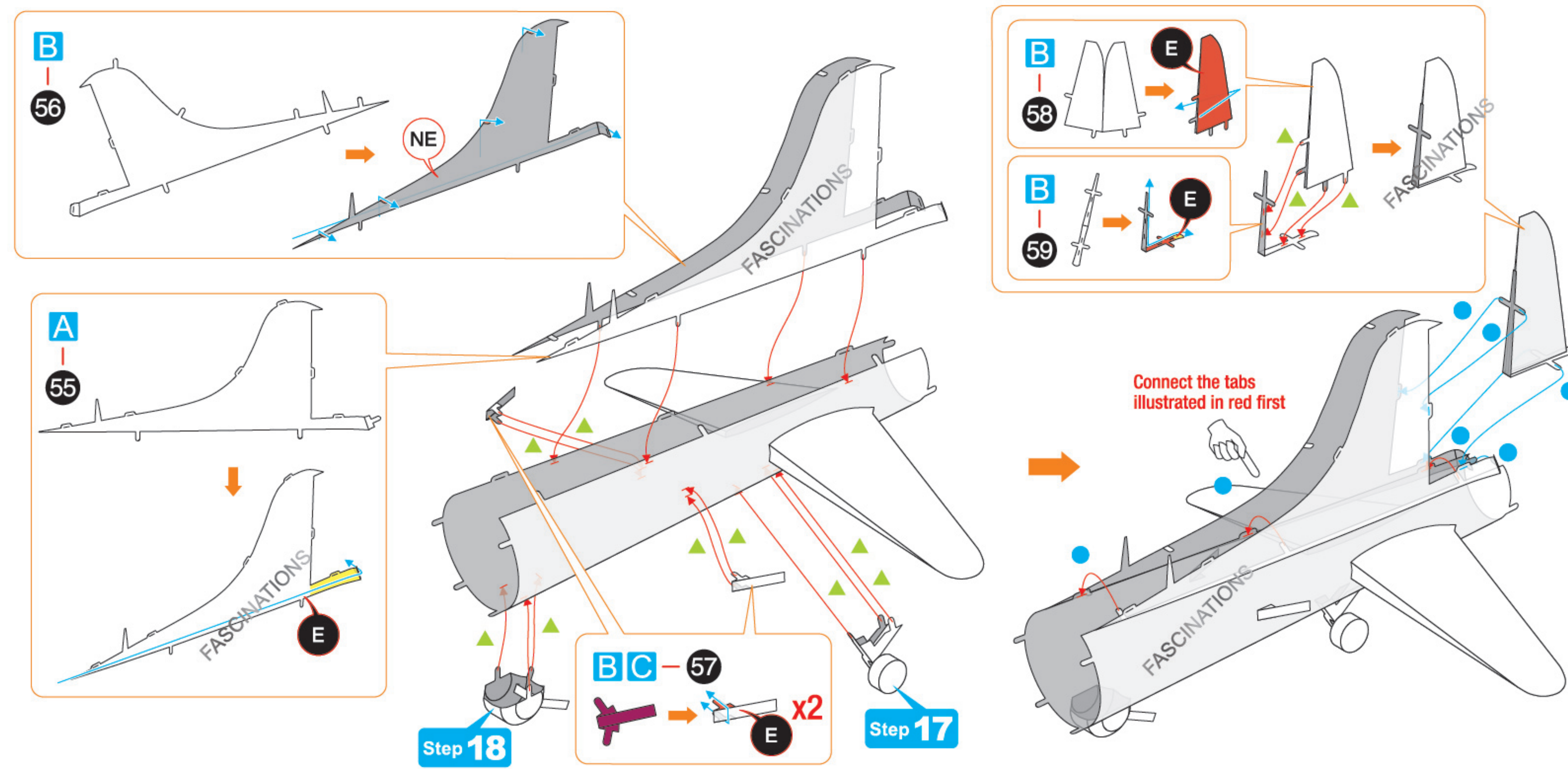
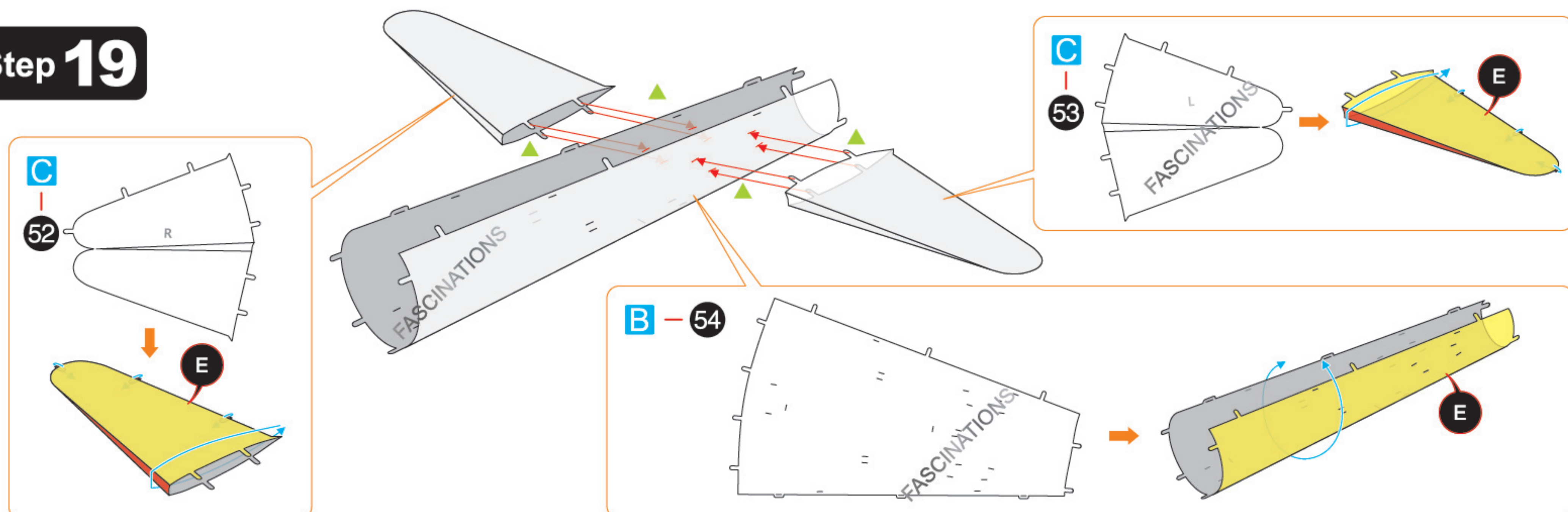




# Step 18



# Step 19



# Step 20

