

TYRANNOSAURUS REX

ME1006

It is highly recommended that you visit

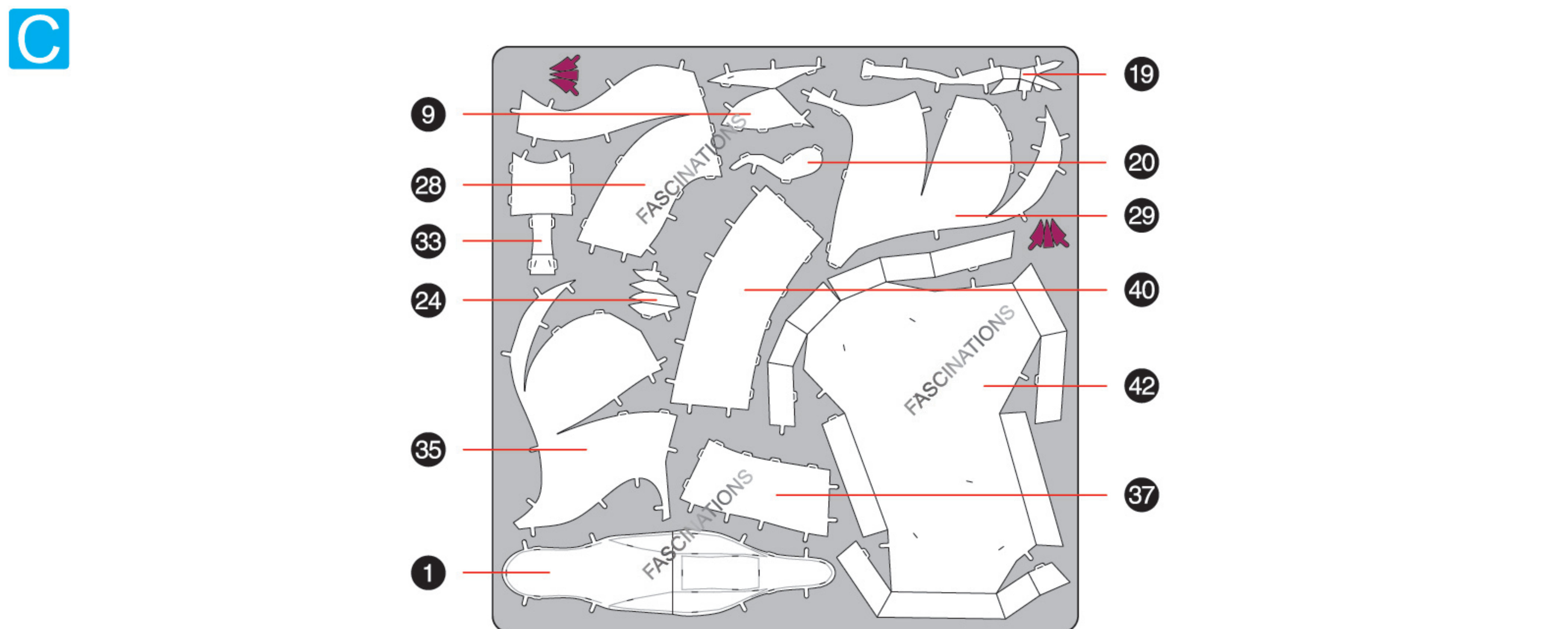
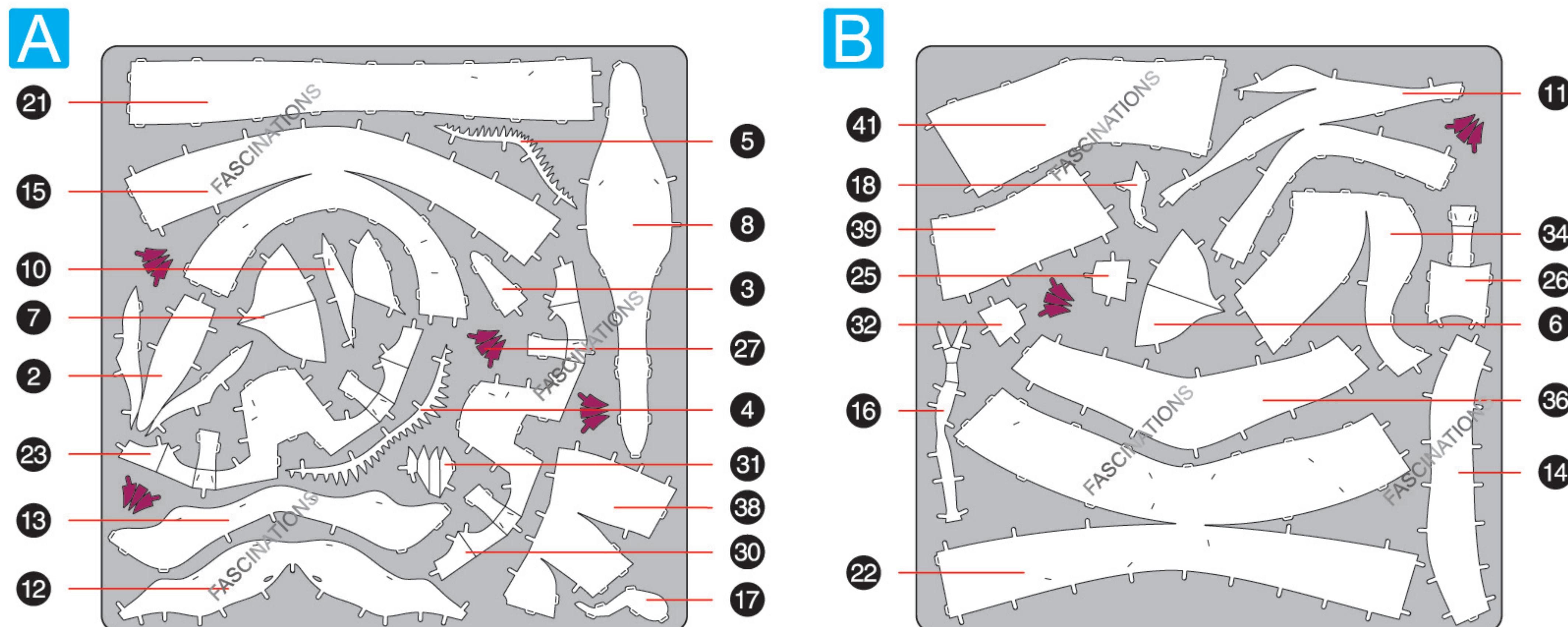
www.metal-earth.com/360/ME1006

to see the completed model before assembling your own



METAL SHEETS

Parts with same color are duplicates



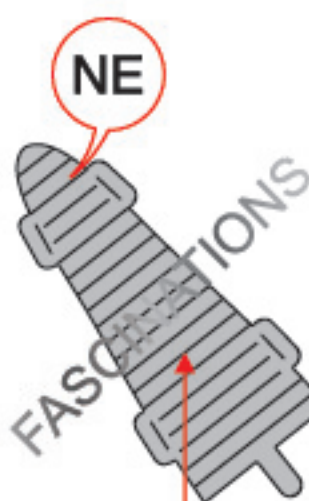
In order to avoid possible injury from sharp edges, please carefully discard the metal sheets after parts have been removed.



Go to www.metal-earth.com/360/ME1006 to see the zoomable PDF version of this instruction sheet

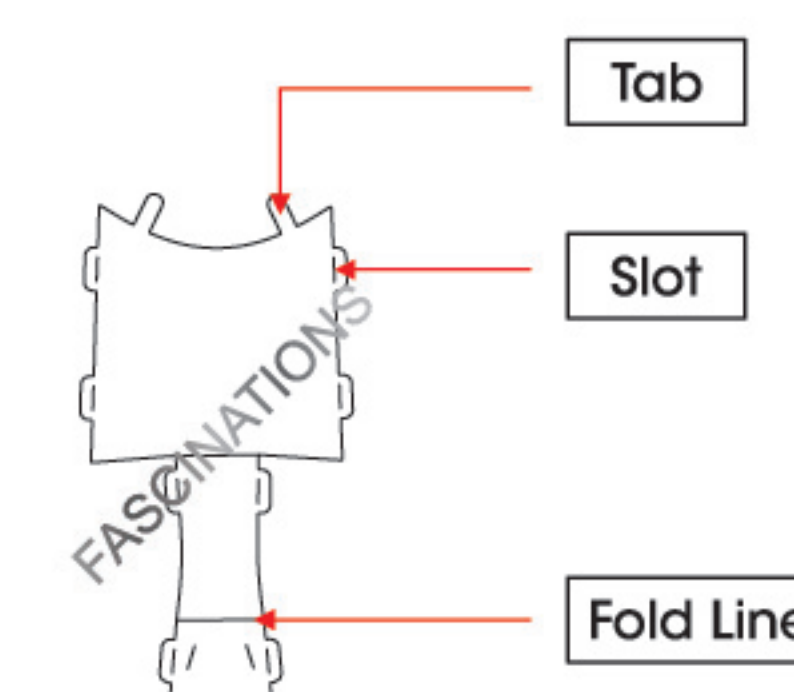
TO CREATE THE BEST CONNECTIONS

A - 3



Consider these engraved stripes as supporting features for the bend

C - 33



Legends:

E Engraved/ Color side

NE Non - engraved/ Silver side

Attention point

Insert tab and bend 90 degrees

Insert tab and twist 90 degrees

Assembly tip:

If needed, slightly twist tabs to hold parts together then untwist and bend them down for a nice finish.

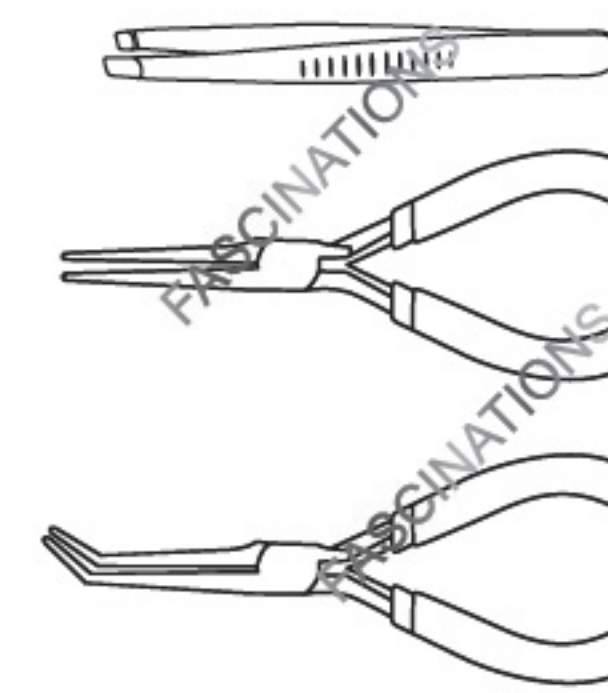
Yellow areas should be curled

Red areas should be folded

Recommended tools:

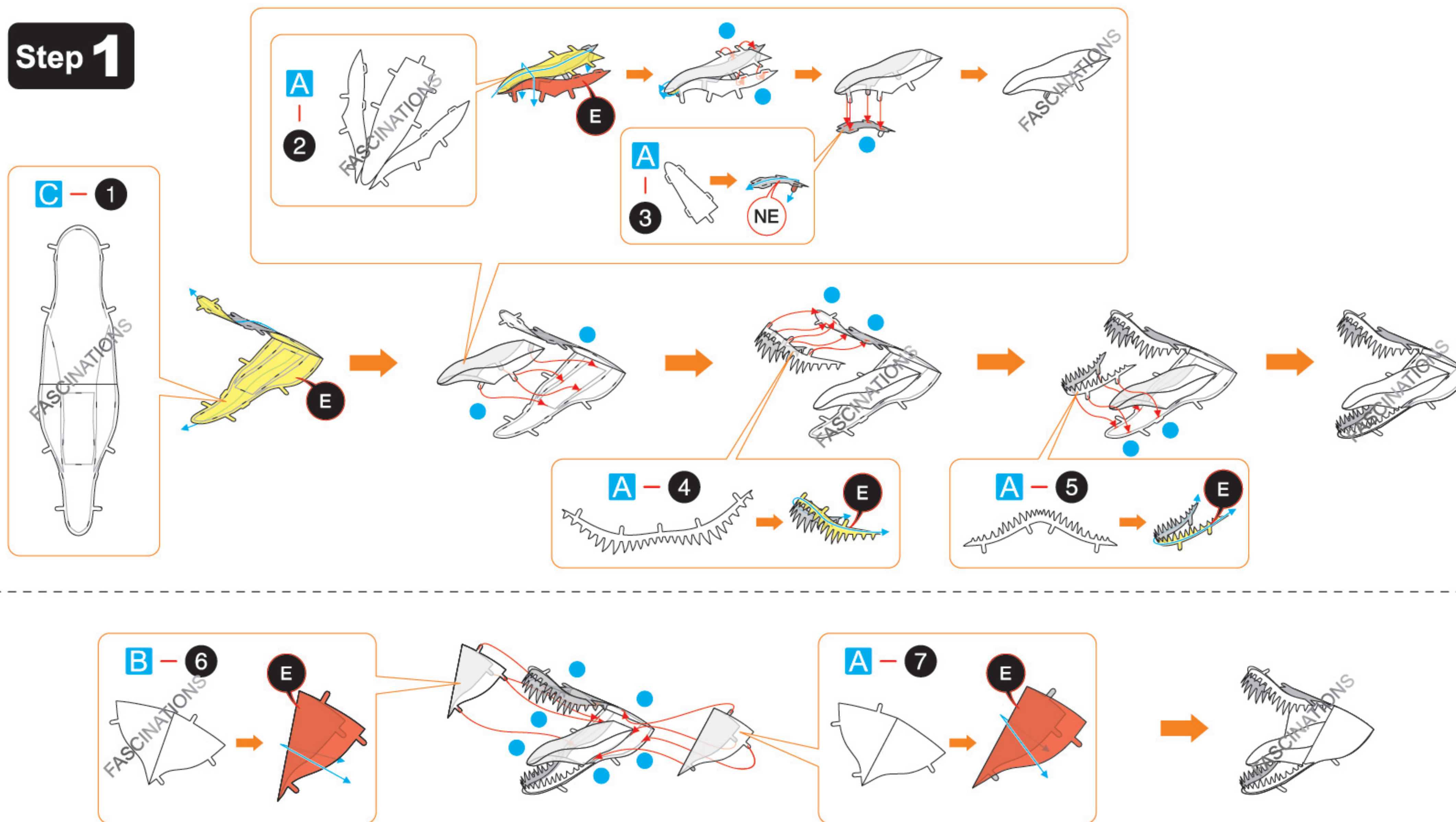
- Wire cutters: helpful for taking parts from the metal sheets.

- Tweezers or needle nose pliers: helpful for folding parts, bending and twisting tabs.

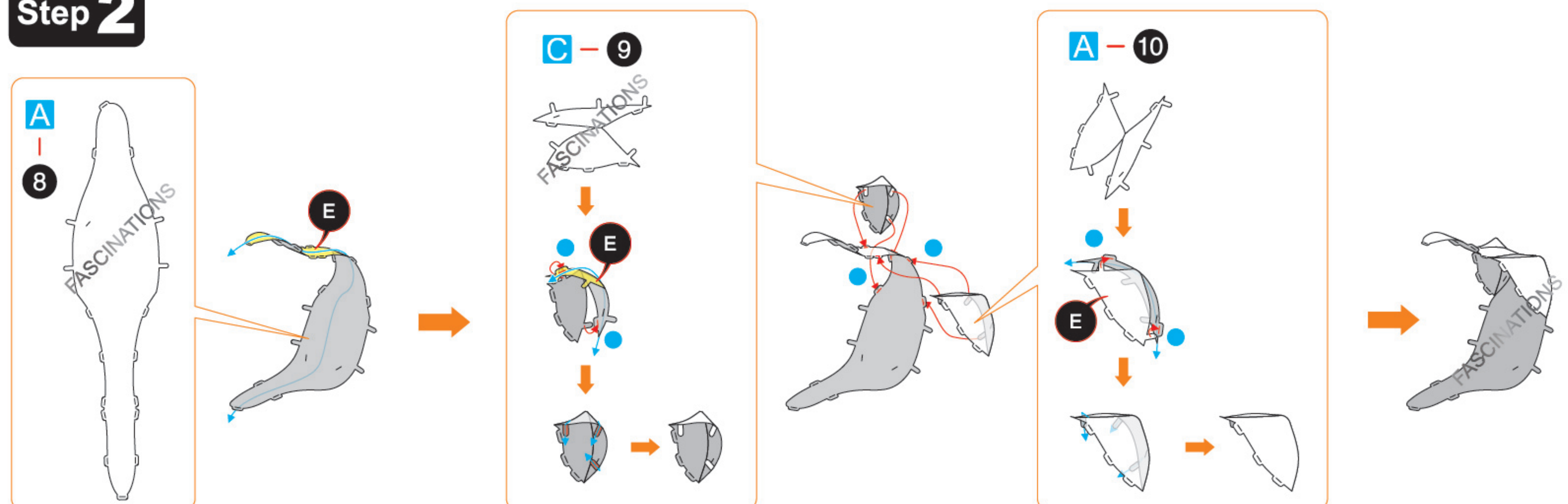


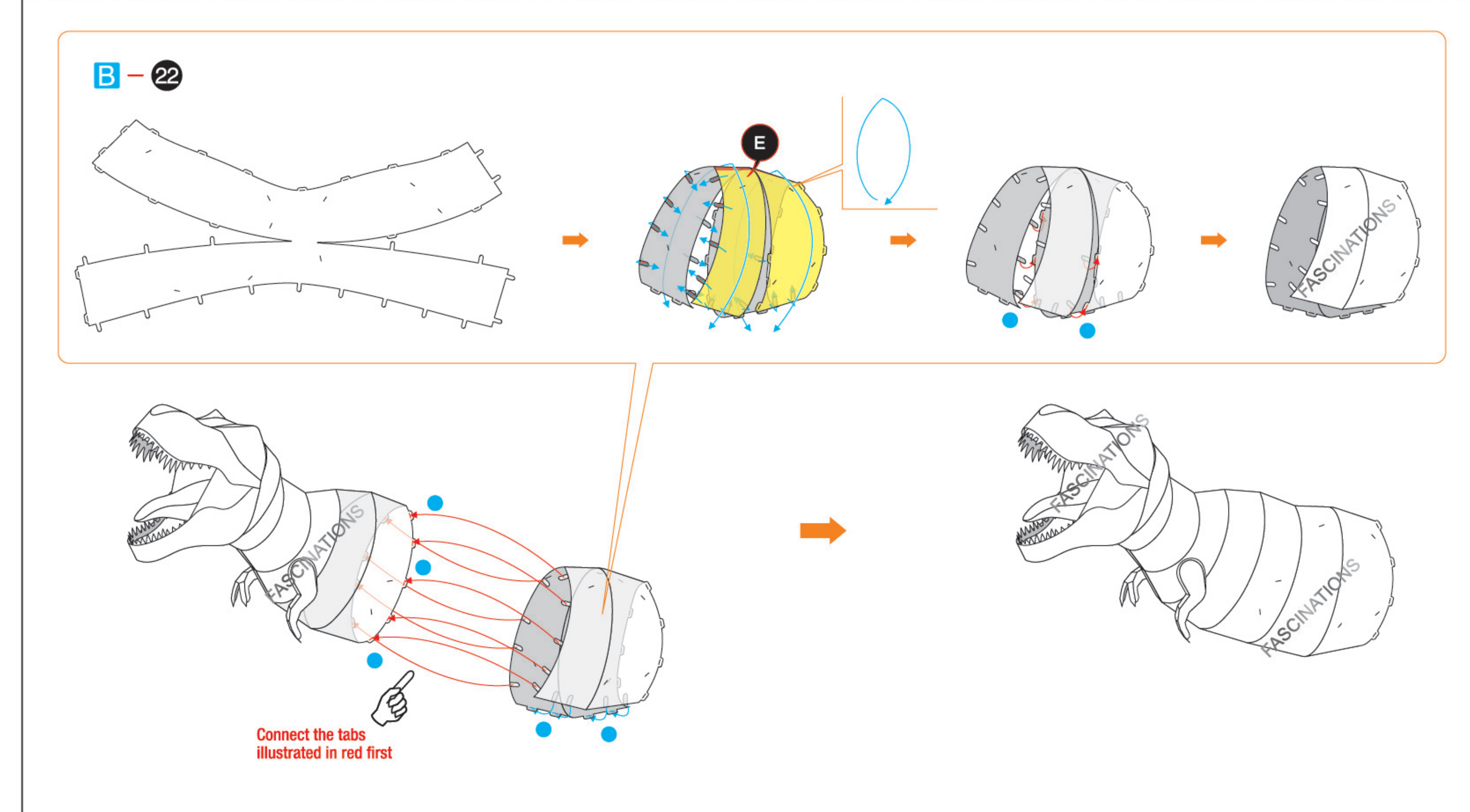
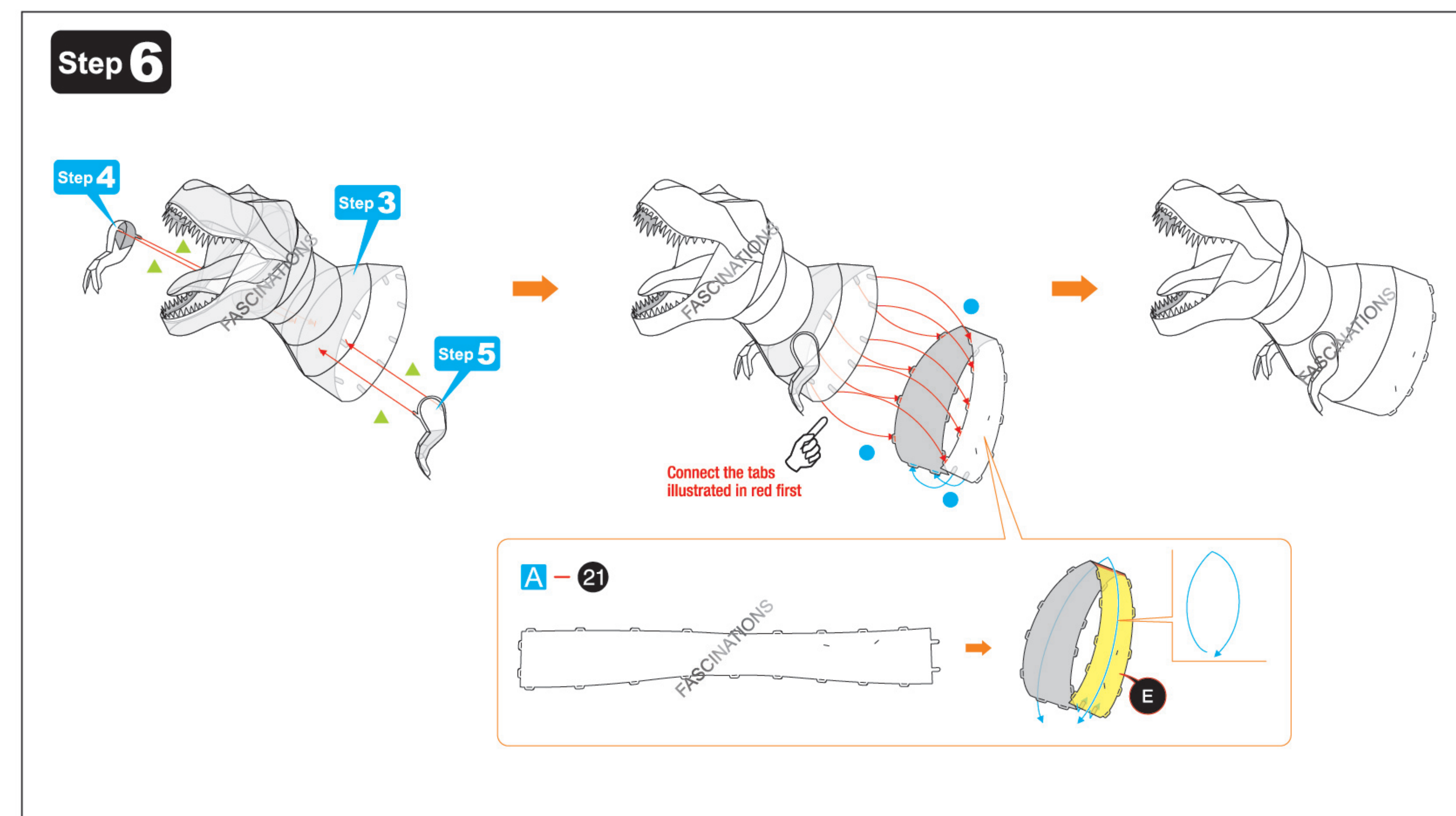
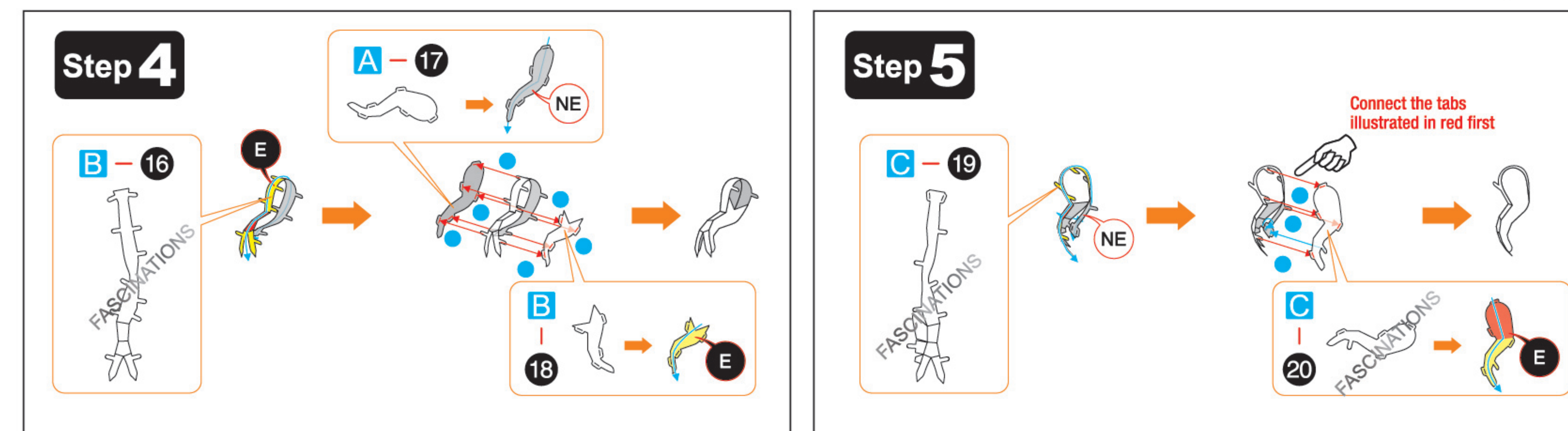
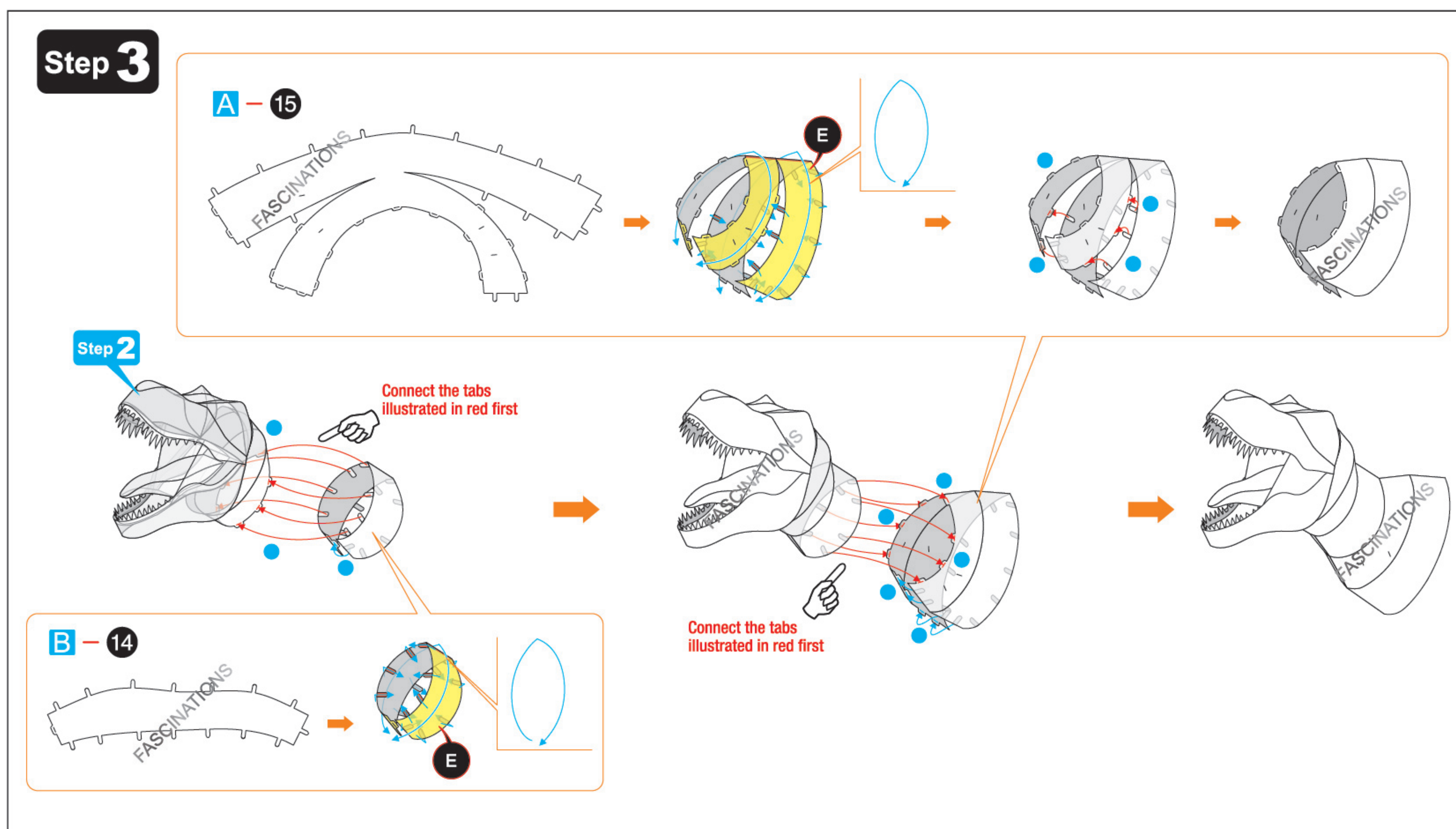
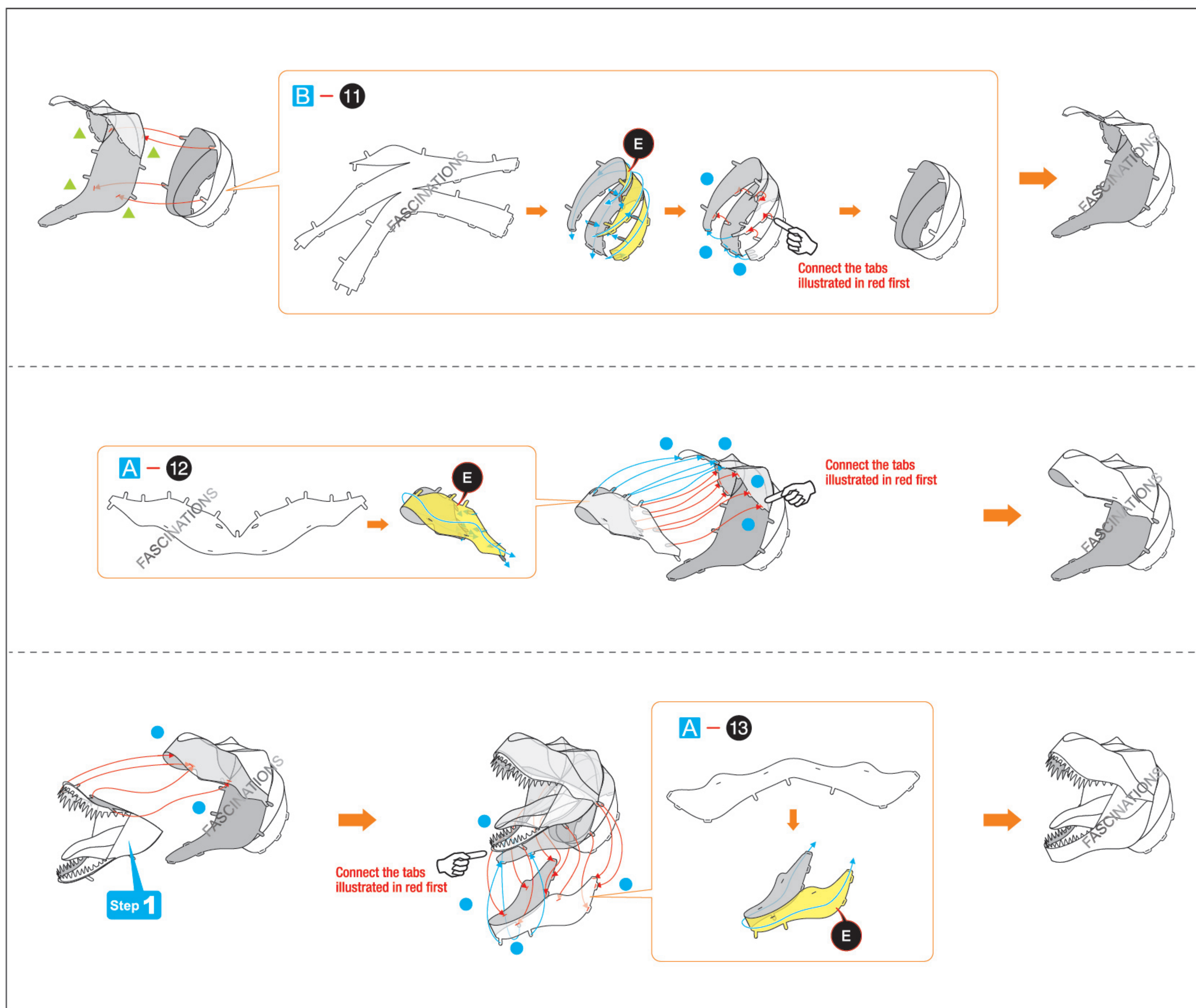
ASSEMBLY FLOW CHART

Step 1

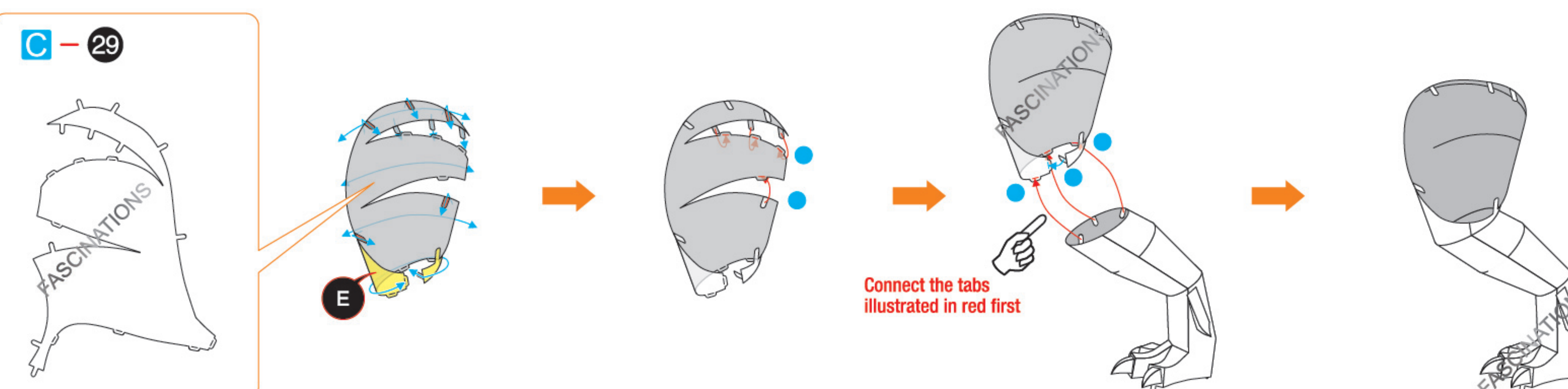
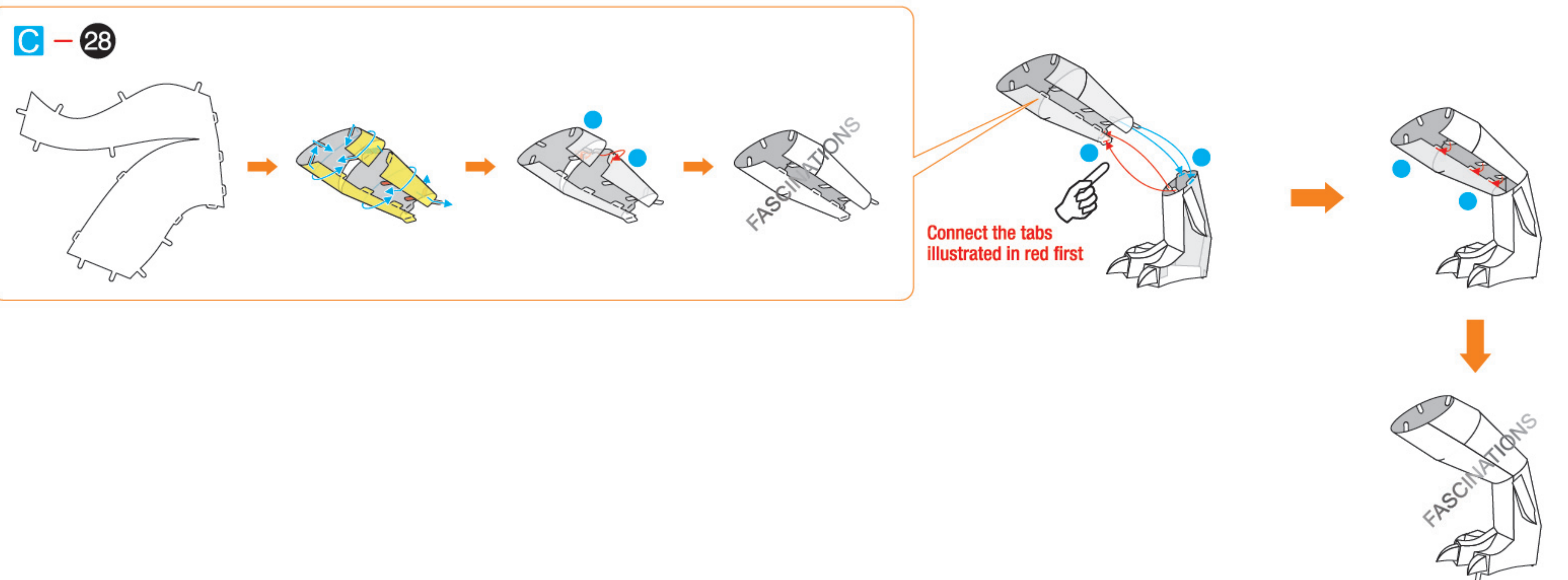
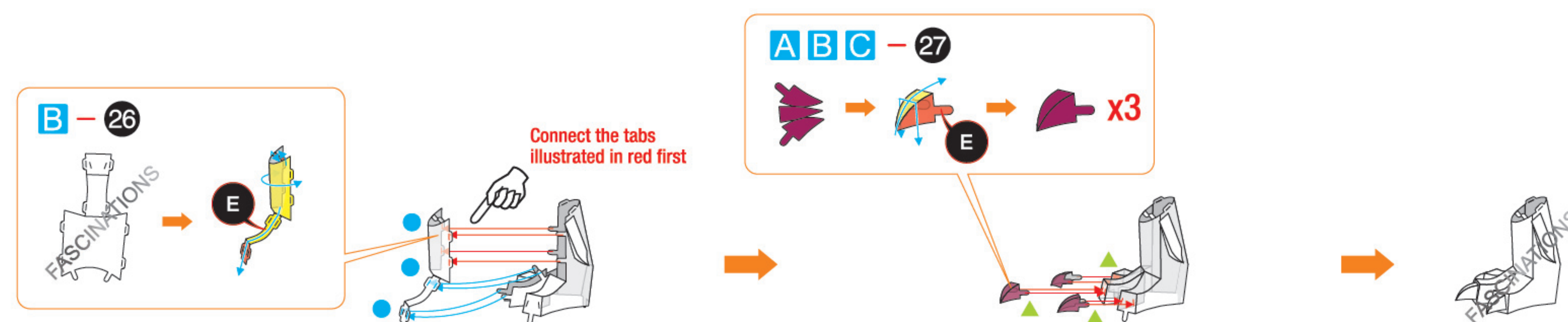
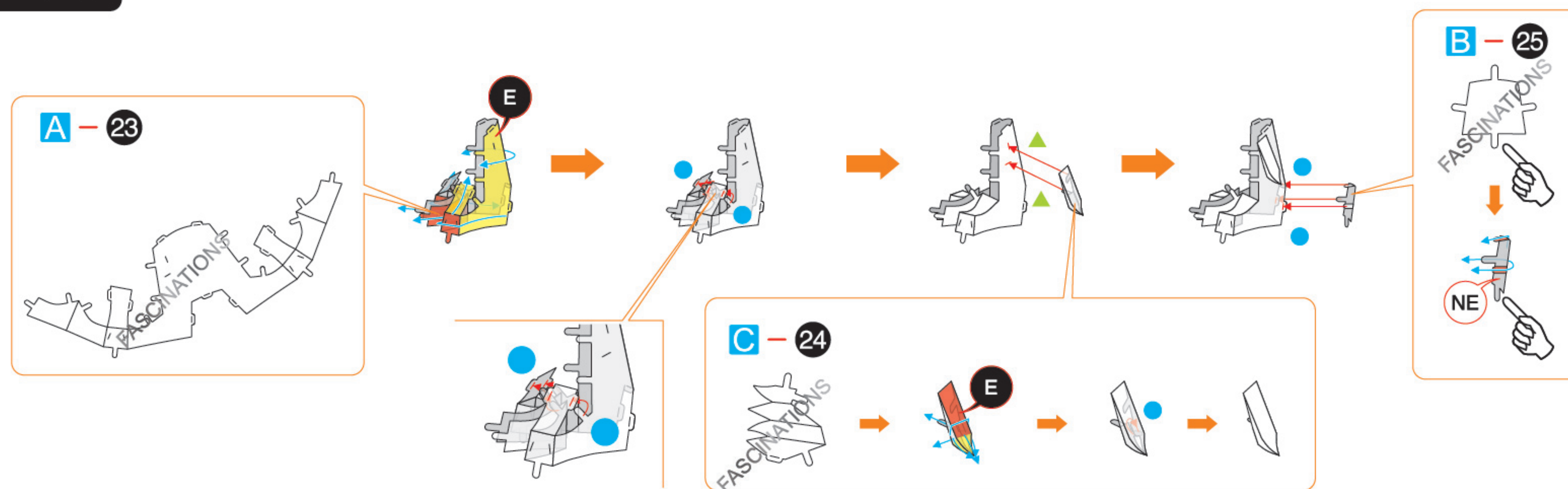


Step 2

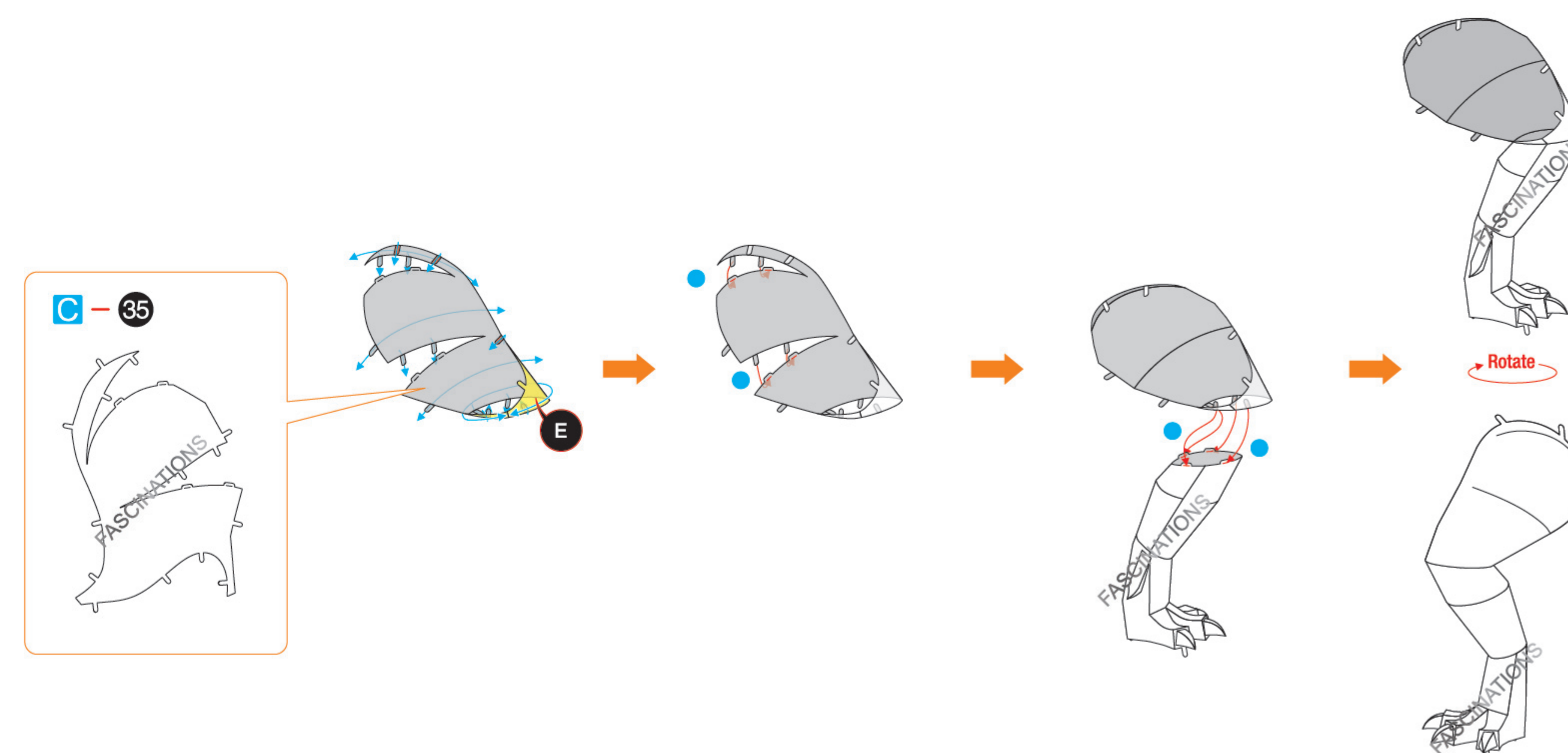
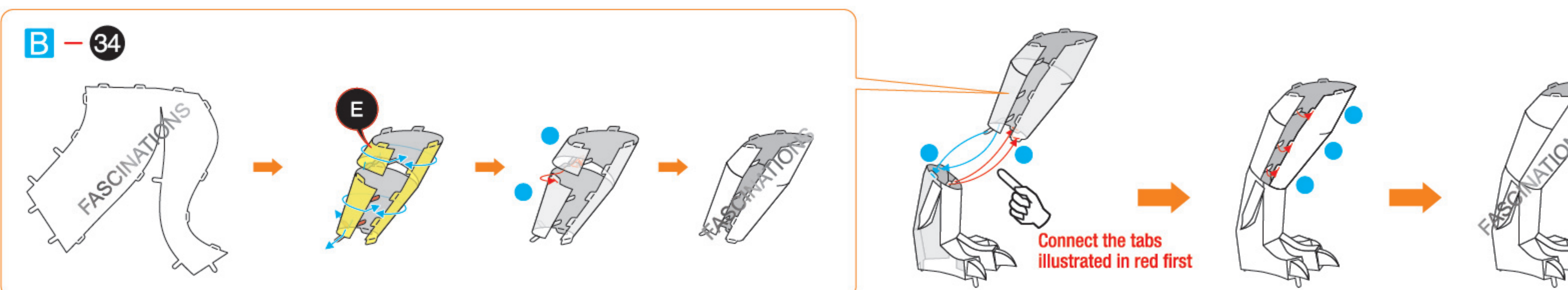
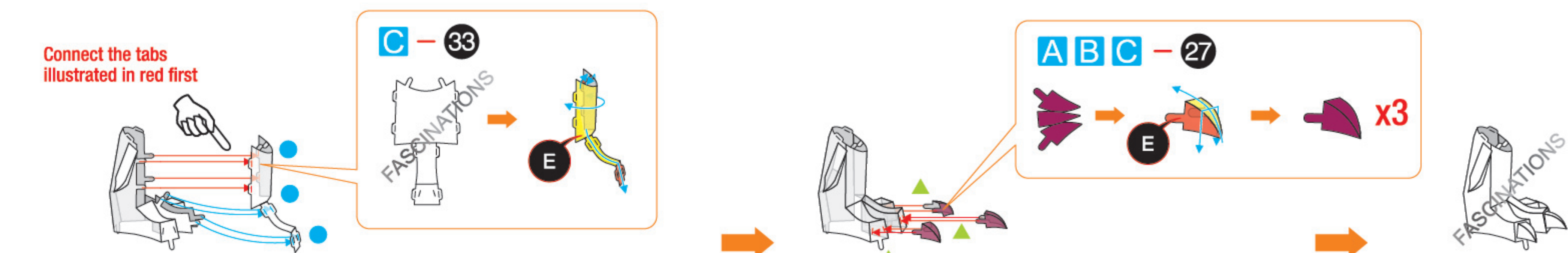
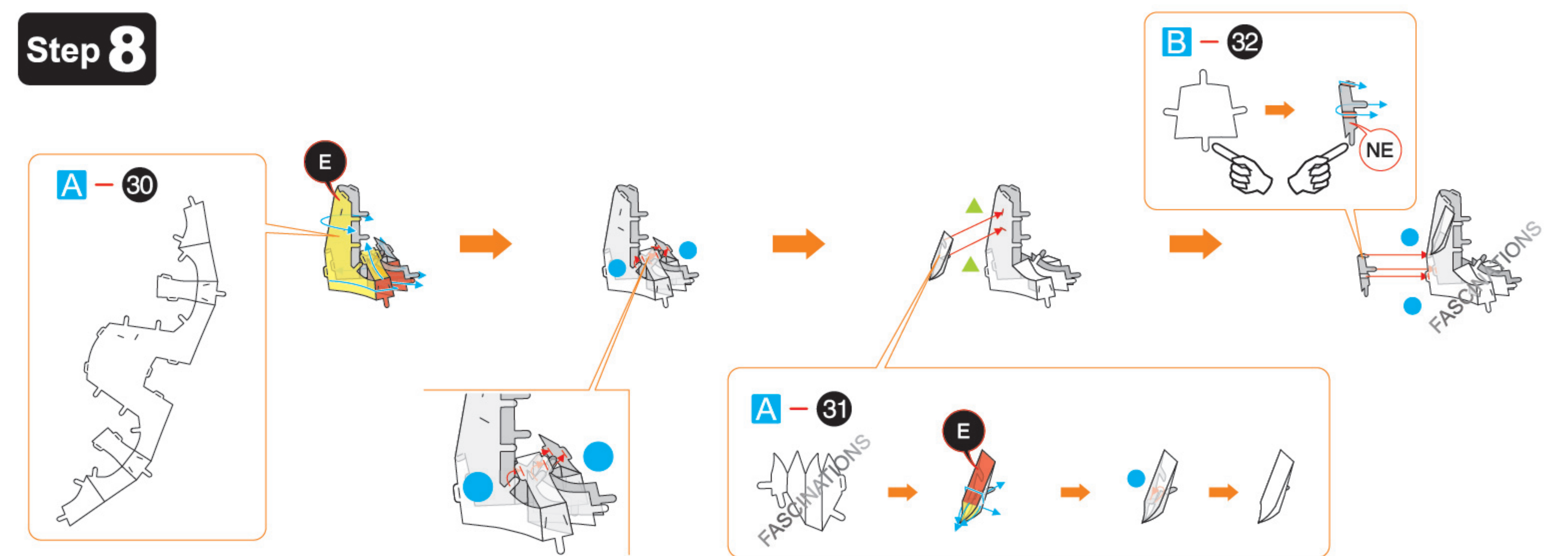




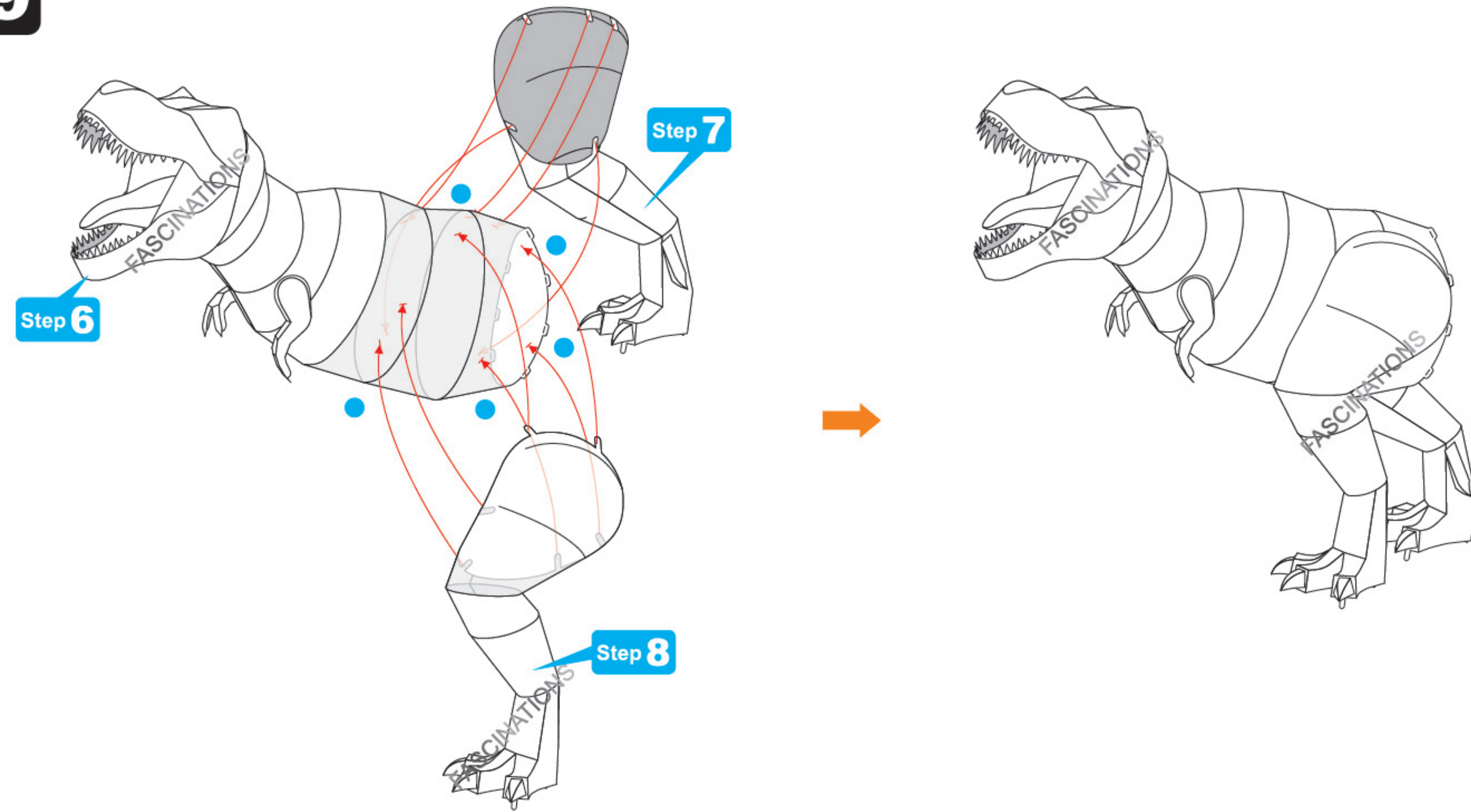
Step 7



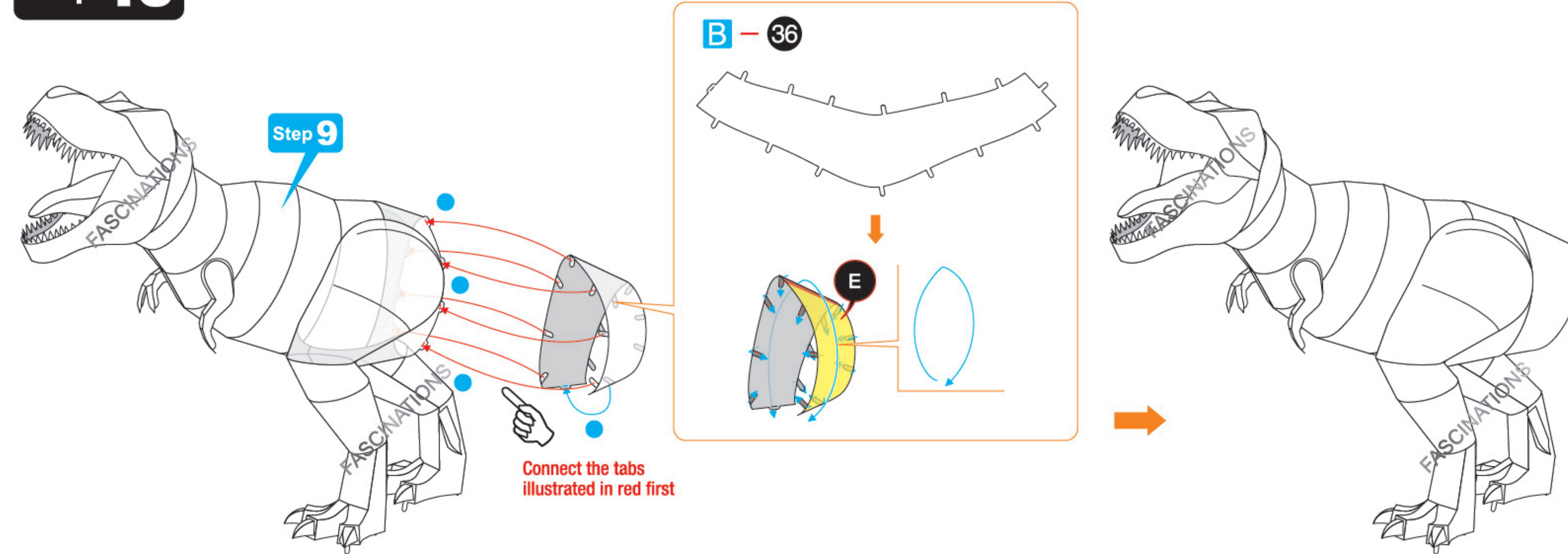
Step 8



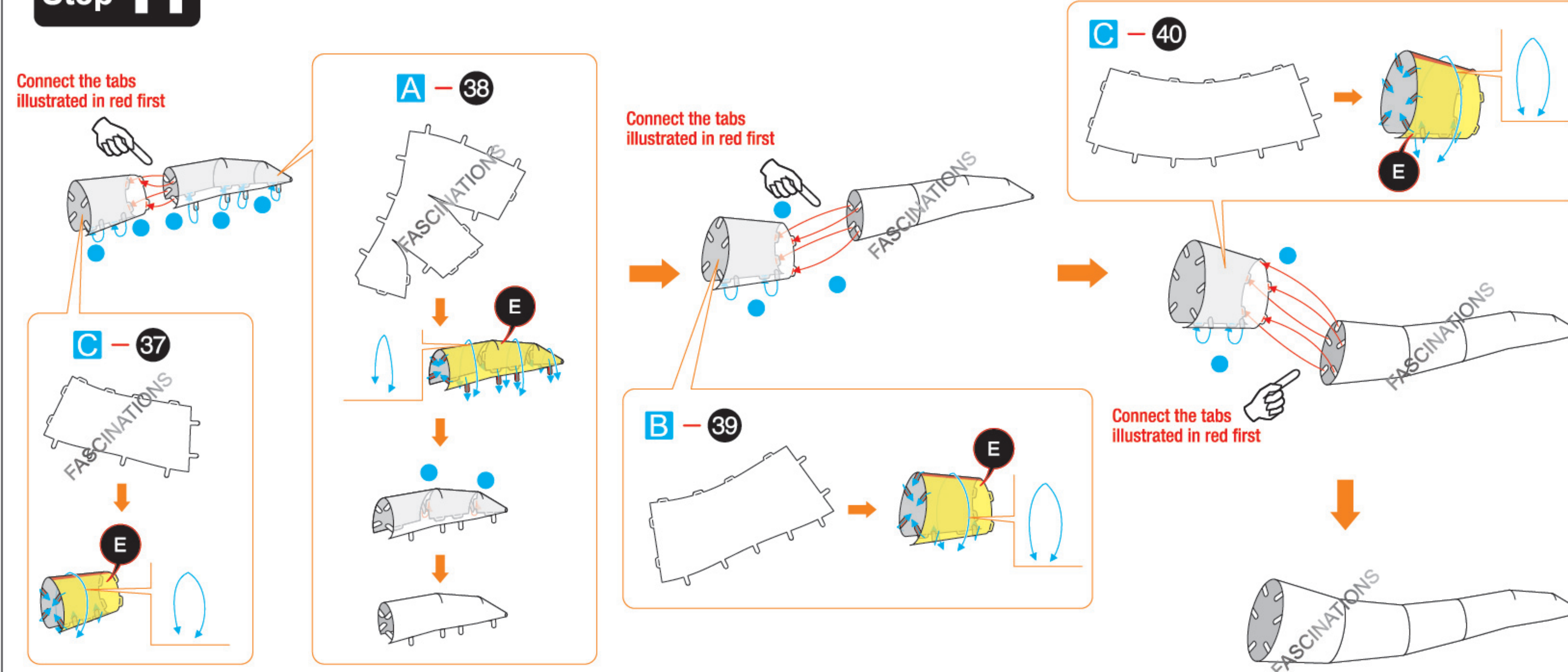
Step 9



Step 10



Step 11



Step 12

